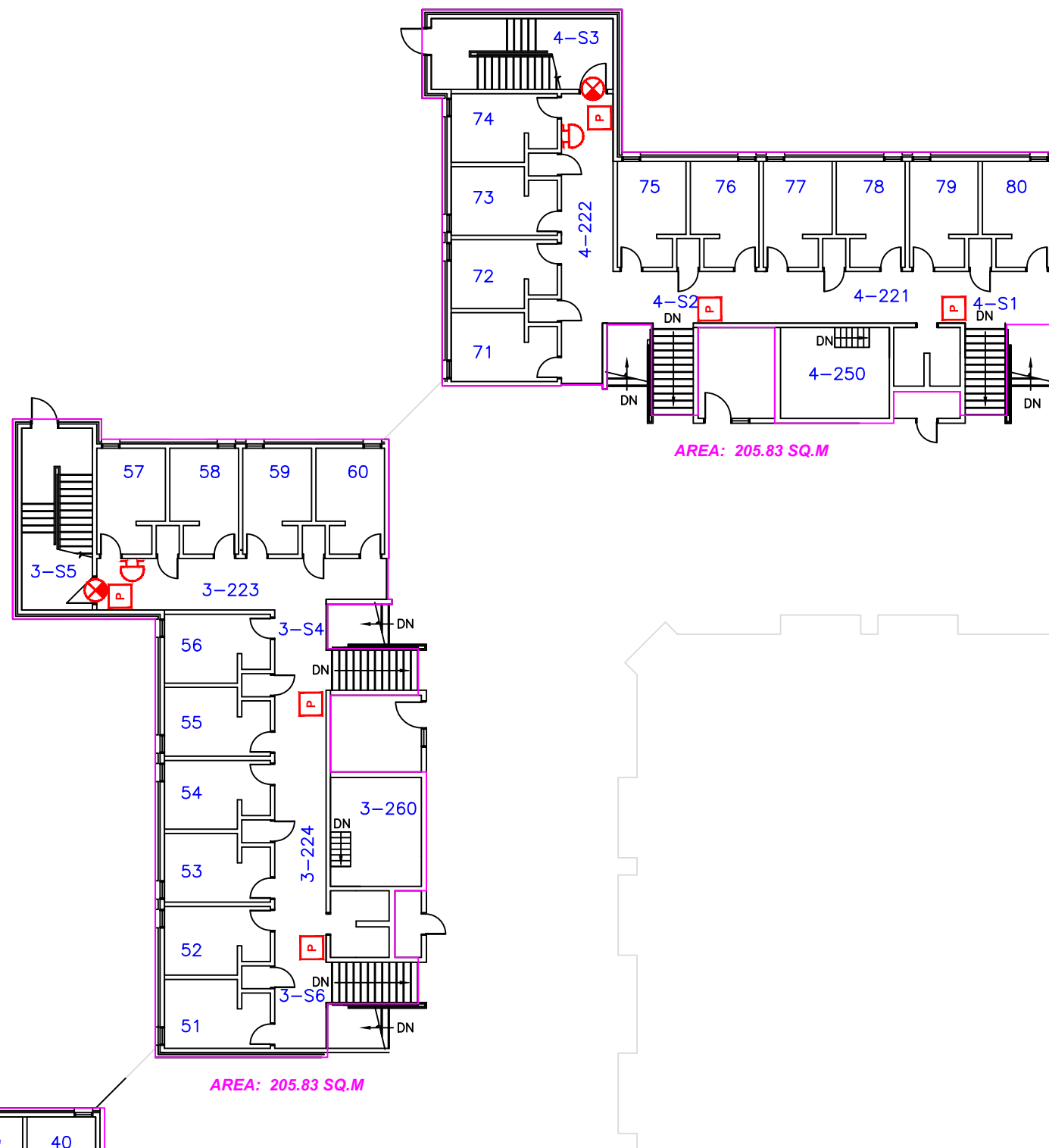


TYPICAL UNIT UPPER FLOORS



LIVING UNITS 3/4 (Q) ROOM LEGEND

| | |
|-------|--------------------|
| 51 | CELL (UPPER LEVEL) |
| 52 | CELL (UPPER LEVEL) |
| 53 | CELL (UPPER LEVEL) |
| 54 | CELL (UPPER LEVEL) |
| 55 | CELL (UPPER LEVEL) |
| 56 | CELL (UPPER LEVEL) |
| 57 | CELL (UPPER LEVEL) |
| 58 | CELL (UPPER LEVEL) |
| 59 | CELL (UPPER LEVEL) |
| 60 | CELL (UPPER LEVEL) |
| 3-223 | UNIT CORRIDOR |
| 3-224 | UNIT CORRIDOR |
| 3-260 | MECH/ELEC |
| 71 | CELL (UPPER LEVEL) |
| 72 | CELL (UPPER LEVEL) |
| 73 | CELL (UPPER LEVEL) |
| 74 | CELL (UPPER LEVEL) |
| 75 | CELL (UPPER LEVEL) |
| 76 | CELL (UPPER LEVEL) |
| 77 | CELL (UPPER LEVEL) |
| 78 | CELL (UPPER LEVEL) |
| 79 | CELL (UPPER LEVEL) |
| 80 | CELL (UPPER LEVEL) |
| 4-221 | UNIT CORRIDOR |
| 4-222 | UNIT CORRIDOR |
| 4-250 | MECH/ELEC |

INSTITUTION **GRANDE CACHE INSTITUTION, Grande Cache AB**
 TAG # **532-06** BUILDING # **A02-Q**
 BUILDING NAME **LIVING UNITS**

FLOOR **2ND**
 AREA **411.66 SQ.M**
 SCALE **1:200**

DATE SIGNED: _____
 APPROVED BY: _____
 LAST UPDATE **NOVEMBER 22 2011**

DRAWN BY: M.GUNNING
 UPDATED BY: R.RAWLYK