

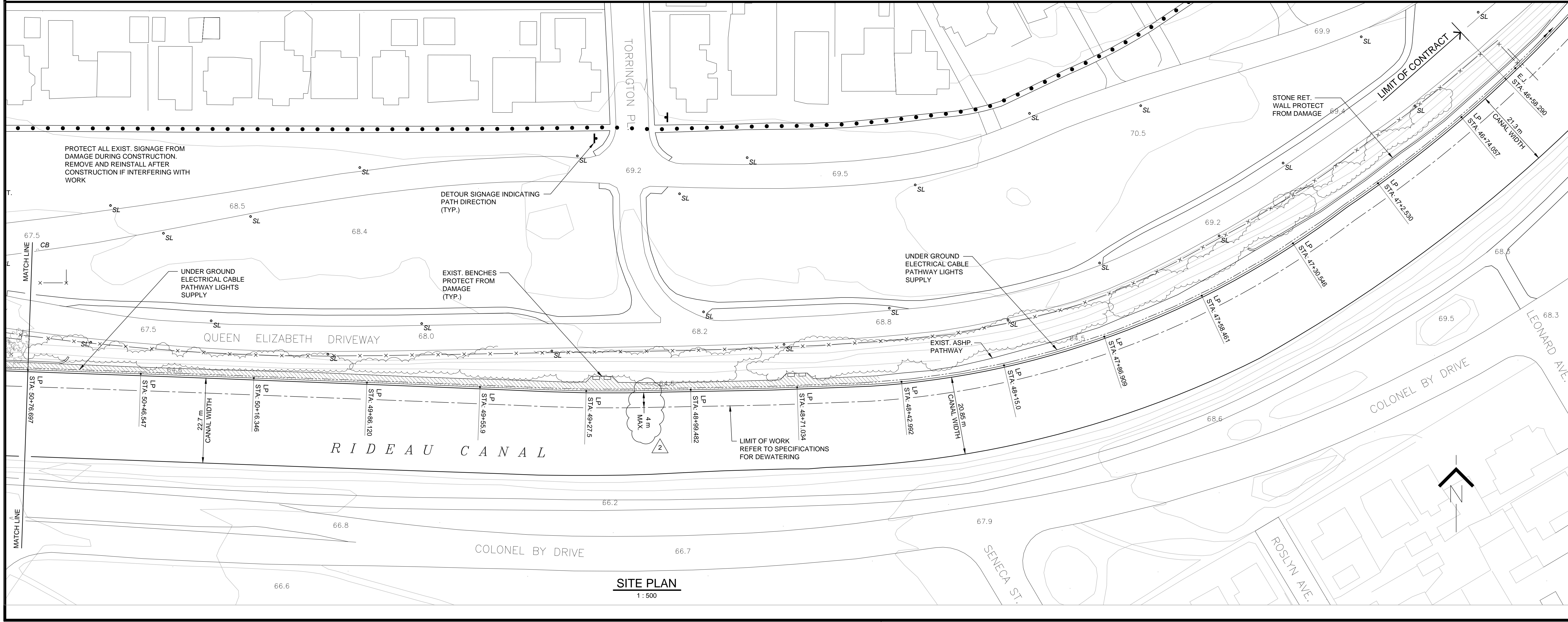
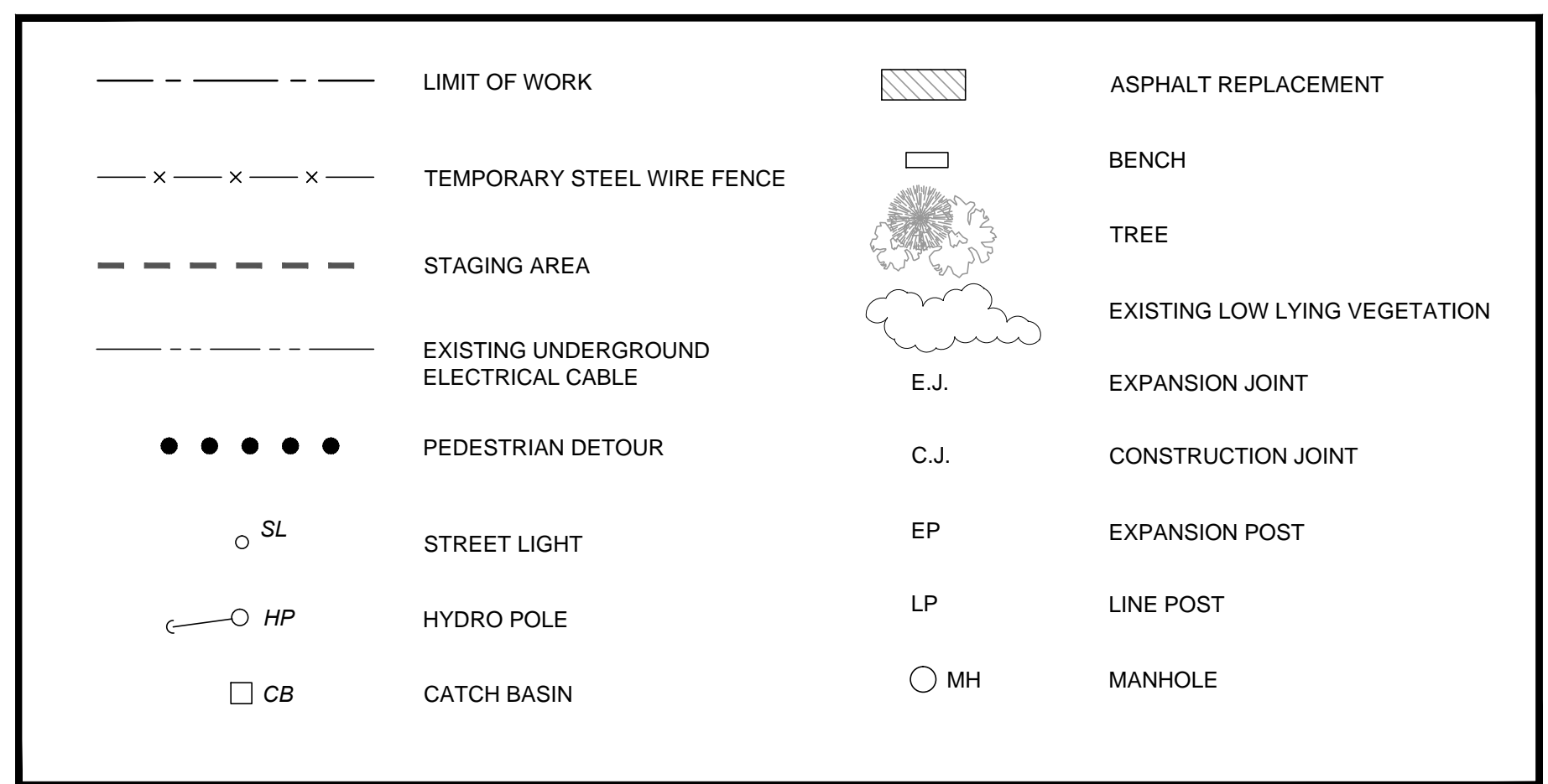
NOTE: (BENCH MARK)

OTTAWA BREWERS RETAIL STORE, ON WEST SIDE OF BANK STREET, BETWEEN REGENT AND HOLMWOOD AVENUES, TABLET IN NORTH SIDE CONCRETE FOUNDATION OF WAREHOUSE, OR MOST NORTHERLY PORTION OF BUILDING, 3.84m EAST OF NORTHWEST CORNER, 12cm BELOW BRICKWORK, 12cm ABOVE GROUND.

GEODEIC MARKER UNIQUE NUMBER: 63U3626
ELEVATION 70.219m.

NOTES:

1. SALVAGE AND REINSTALL EXISTING LAMP POSTS; BENCHES, GARBAGE CONTAINERS AND SIGNS. REFER TO SPECIFICATIONS FOR DETAILS (REMOVAL SECTION 02 41 21)
2. DETOUR/ WARNING SIGNS AND TEMPORARY FENCING BLOCKING EXISTING BIKE PATH SHALL BE LUMINATED
3. PATHWAY WITHIN WORK LIMITS TO BE USED AS CONSTRUCTION WORKING AREA, PROTECT FROM DAMAGE. IF DAMAGED, REINSTATE TO ORIGINAL CONDITION OR BETTER
4. DETOUR SIGNS @ NORTH END OF PEDESTRIAN PATHWAY NEAR BANK STREET TO CLEARLY INDICATE CLOSURE AND ACCESS LIMITATION
5. CONTRACTOR TO VERIFY AND CONFIRM LOCATION OF CATCH BASIN DRAINAGE OUTLETS DURING INITIAL WINTER DRAWDOWN PRIOR TO COMMENCEMENT OF WORK



No.	Description	Dwn By Des. Par	Date
2	LIMIT OF WORK AREA REVISED	C.U.	23-09-2015
1	ISSUED FOR TENDER	C.U.	10-09-2015

Revision / Révision	A	B
A	Detail number Numéro du détail	
B	Location dwg. number Numéro sur dessin	

RIDEAU CANAL
OTTAWA WALLS REPAIRS
2015

Drawing title / Titre du dessin

**SITE PLAN
CONSTRUCTION STAGING**

Drawn by / Dessiné par HENRYK CHRZANOWSKI	Designed by / Conçu par CHRIS UCHWAT
Approved by / Approuvé par LUC BÉRIEULT	Drawing Date / Date du dessin AUGUST 2015
Project manager / Administrateur de projet ATIF SUHAIL	
File Number / Numéro du Dossier	Drawing Number / Numéro du Dessin 101
Project Number / Numéro du projet R.079197.001	