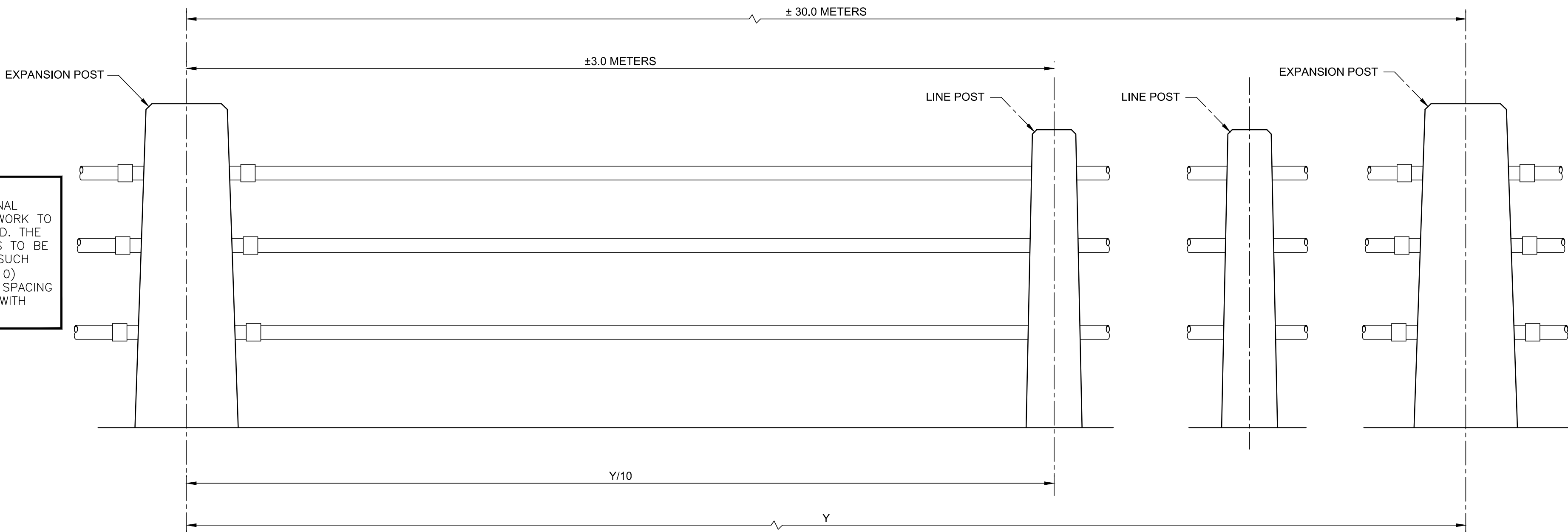


NOTE:
WHEN PLANNING THE RECONSTRUCTION OF CANAL
COPING IT IS DESIRABLE TO CARRY OUT THE WORK TO
INCLUDE THE EXPANSION POSTS AT EITHER END. THE
ACTUAL DISTANCE BETWEEN THE END POSTS IS TO BE
ACCURATELY DETERMINED TO BE CALCULATED SUCH
THAT THERE WILL BE TEN EQUAL SPACES (Y/10)
BETWEEN EXPANSION POSTS. MOST DESIRABLE SPACING
BETWEEN EXPANSION POSTS IS 30.0 METERS, WITH
LINE POSTS SPACED EVERY 3.000 METERS.



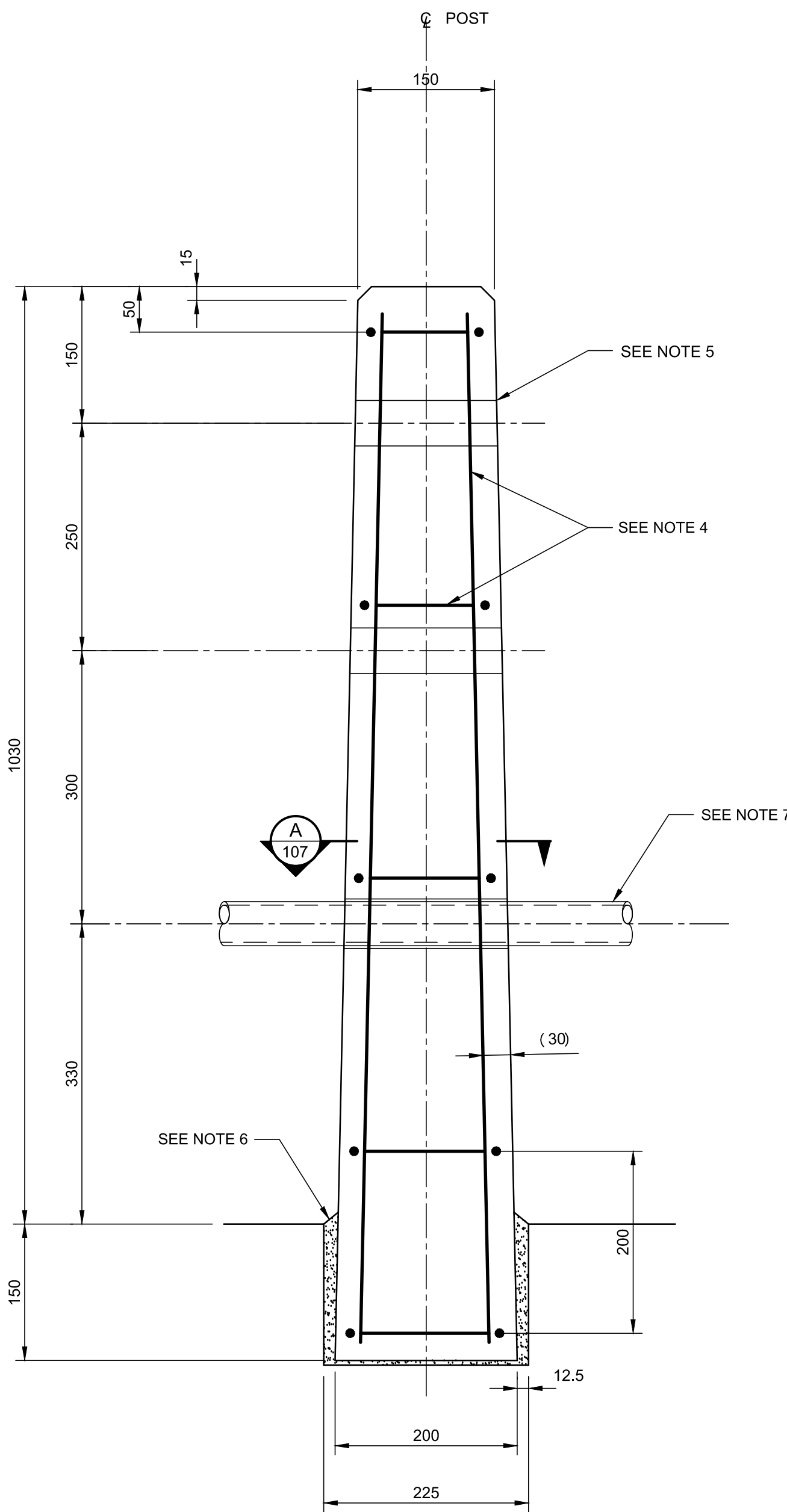
CANAL RAILING DETAILS

1:10

1
107

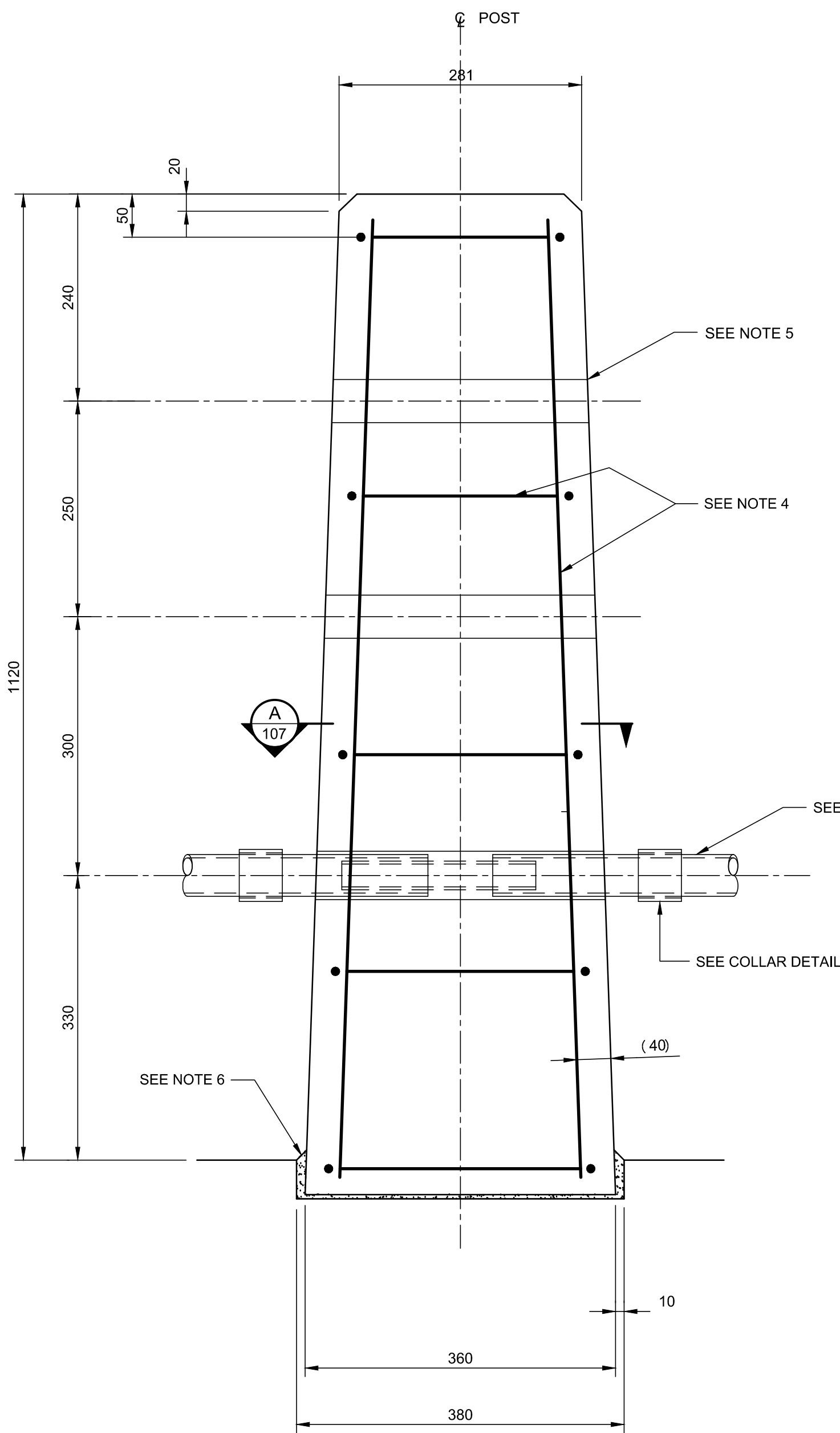
NOTES

- 1) THE MOLD WILL BE SUPPLIED BY THE N.C.C. AND OBTAINED FROM THE ALBION ROAD SUPPLY CENTER AND IS TO BE RETURNED IN GOOD CONDITION. FINISHED POSTS ARE TO BE DELIVERED AND STOCKPILED AT THE ALBION ROAD YARD.
- 2) CONCRETE SHALL HAVE A COMPRESSIVE STRENGTH OF 35 MPa AT 28 DAYS, USING A NO. 2 GREEN MADOC AGGREGATE WITH RIVER WASHED SAND OR MORTAR SAND.
- 3) THE AGGREGATE SHALL BE EXPOSED AND THE TEXTURE OF THE REQUIRED FINISH MAY BE INSPECTED AT THE ALBION ROAD YARD. PRIOR TO PRECASTING, THE FABRICATOR SHALL SUBMIT TWO (2) SAMPLE PANELS (300x300x25) TO THE ENGINEER FOR APPROVAL AND COMPARISON WITH THE TEXTURE AND AGGREGATE OF THE CAST UNIT.
- 4) REINFORCING SHALL BE 4-15M VERTICAL AND 10M TIES AT 300 mm CENTER TO CENTER AND SHALL CONFORM TO C.S.A. STANDARD SPECIFICATION G30.12 WITH A MINIMUM YIELD STRENGTH OF 350 MPa AND SHALL BE EPOXY COATED.
- 5) OPENINGS THROUGH POST TO ACCEPT 40 mm (1 1/2") DIAMETER STANDARD PIPE USED AS HANDRAIL.
- 6) NON-SHRINKING GROUT IN RECESSES.
- 7) HANDRAIL TO BE 40 mm (1 1/2") DIAMETER STANDARD PIPE, PRIMED AND PAINTED BLACK.
- 8) CHAMFER ALL EDGES AS PROVIDED FOR IN MOLD SUPPLIED.
- 9) TOUCH UP REINFORCING BARS WITH EPOXY PAINT PRIOR TO CASTING.
- 10) TEXTURING: SHALL NORMALLY BE ACCOMPLISHED USING A CHEMICAL RETARDANT AND PRESSURE WASH. OTHER METHODS OF EXPOSING THE AGGREGATE WILL ONLY BE ALLOWED ON SPECIAL APPROVAL OF THE DESIGN DIVISION DIRECTOR.



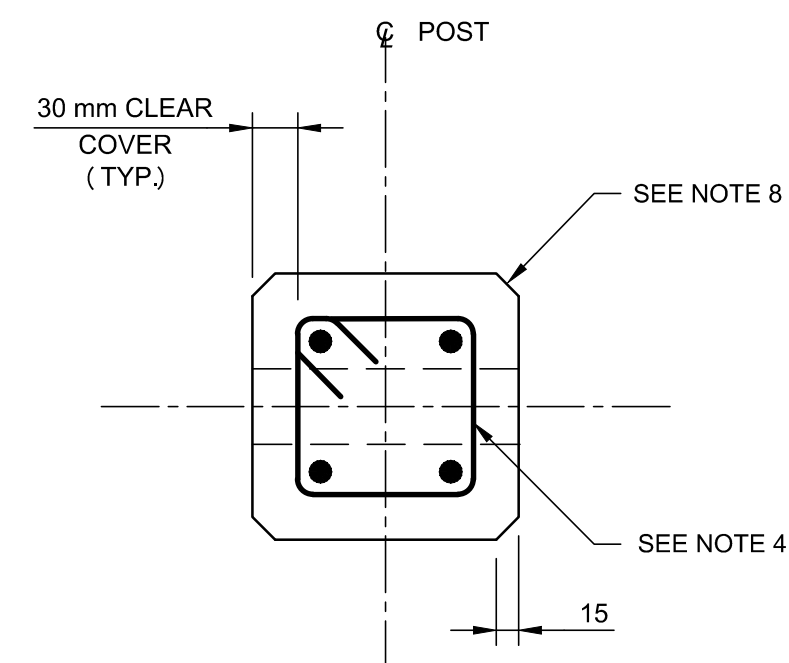
LINE POST

1:5



EXPANSION POST

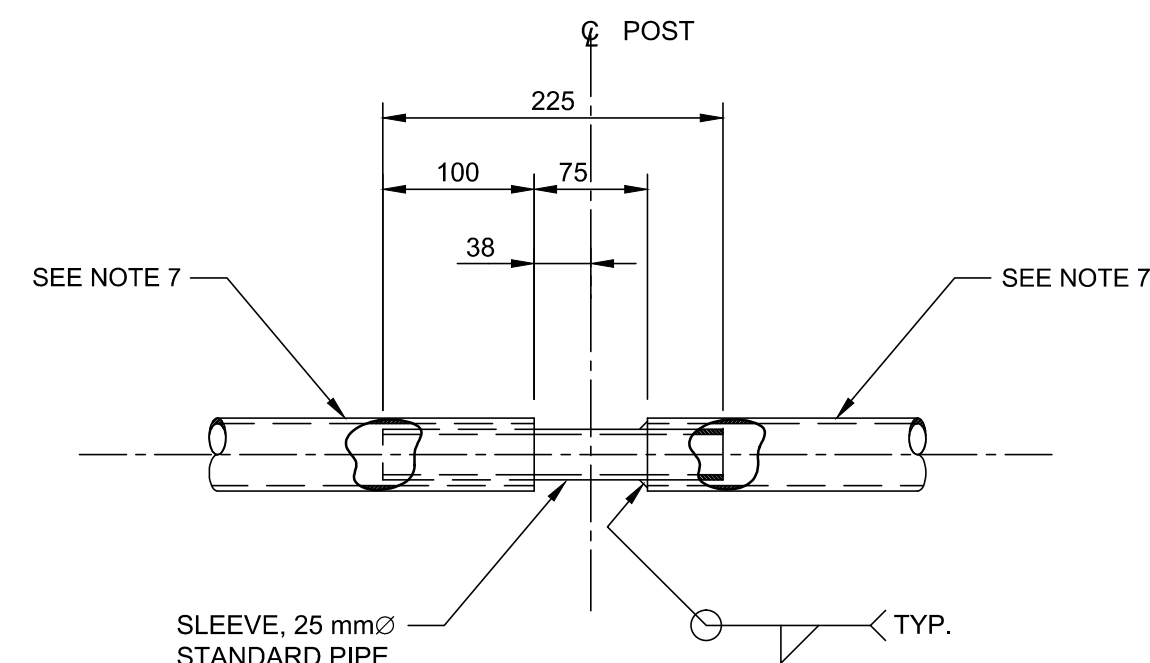
1:5



SECTION A

1:5

A
107

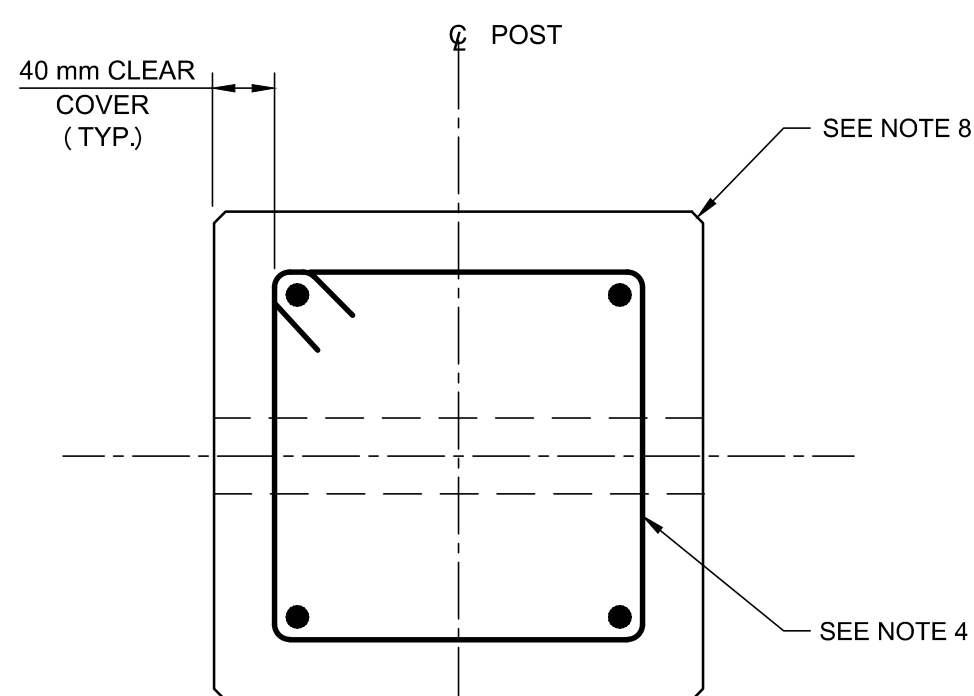


PIPE EXPANSION DETAILS

1:5

A
107

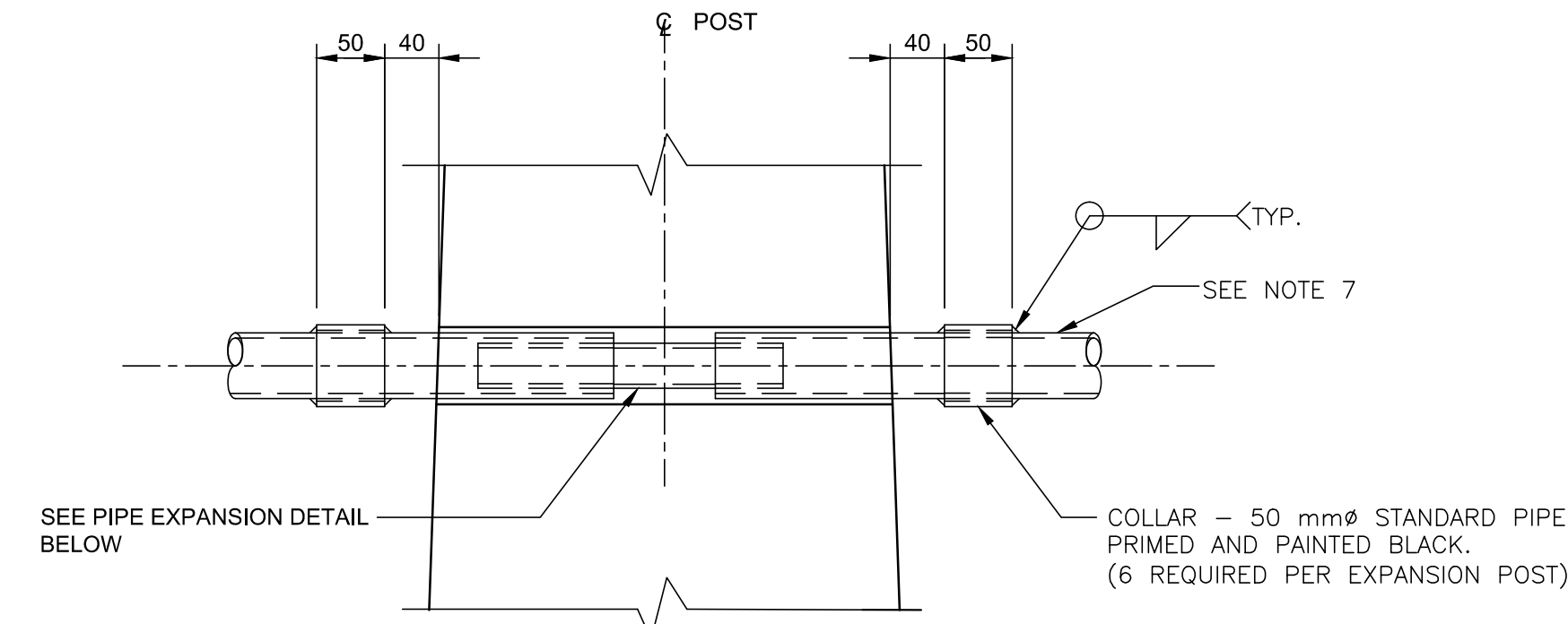
NOTE:
THIS DRAWING IS A REPRODUCTION OF A NATIONAL CAPITAL COMMISSION
REFERENCE DRAWING - "CANAL RAILING, CONCRETE POST DETAILS", SHEET NO. 5562-318



SECTION A

1:5

A
107



COLLAR DETAILS

1:5

A
107

CONCRETE POST DETAILS

1:5

A
107

1	ISSUED FOR TENDER	C.U.	10-09-2015
No.	Description	Dwn By Des.Par	Date

Revision / Révision

A
B

A Detail number
No. du détail
B Location dwg. no.
No. sur dessin

Project title / Titre du projet

RIDEAU CANALS
OTTAWA WALLS REPAIRS
2015

Drawing title / Titre du dessin

EXISTING POSTS
AND RAILING DETAILS
REFERENCE

Drawn by / Dessiné par

HENRYK CHRZANOWSKI

Designed by / Conçu par

CHRIS UCHWAT

Approved by / Approuvé par

LUC BÉRIAL

Drawing Date / Date du dessin

AUGUST 2015

Project manager / Administrateur de projet

ATIF SUHAIL

Contract No. / Numéro du contrat

R.079197.001

Drawing No. /
Dessine No.

107

Sheet
Feuille

8 of
du 8