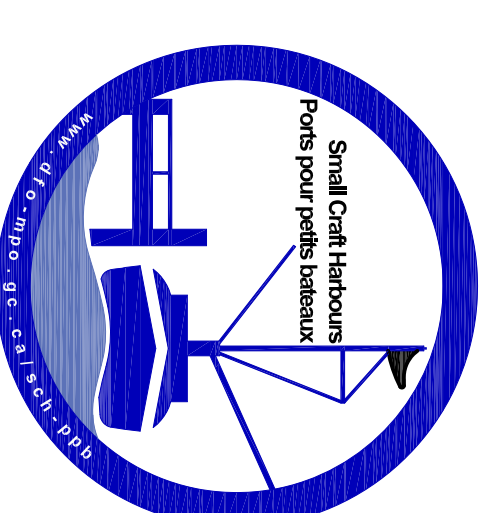
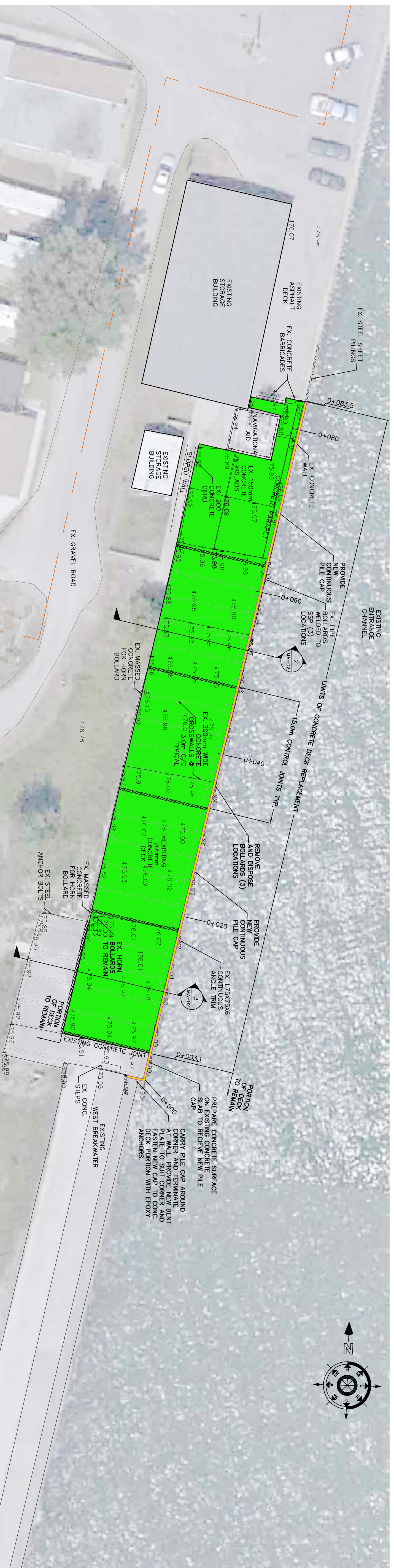


SMALL CRAFT HARBOURS
CENTRAL AND ARCTIC REGION

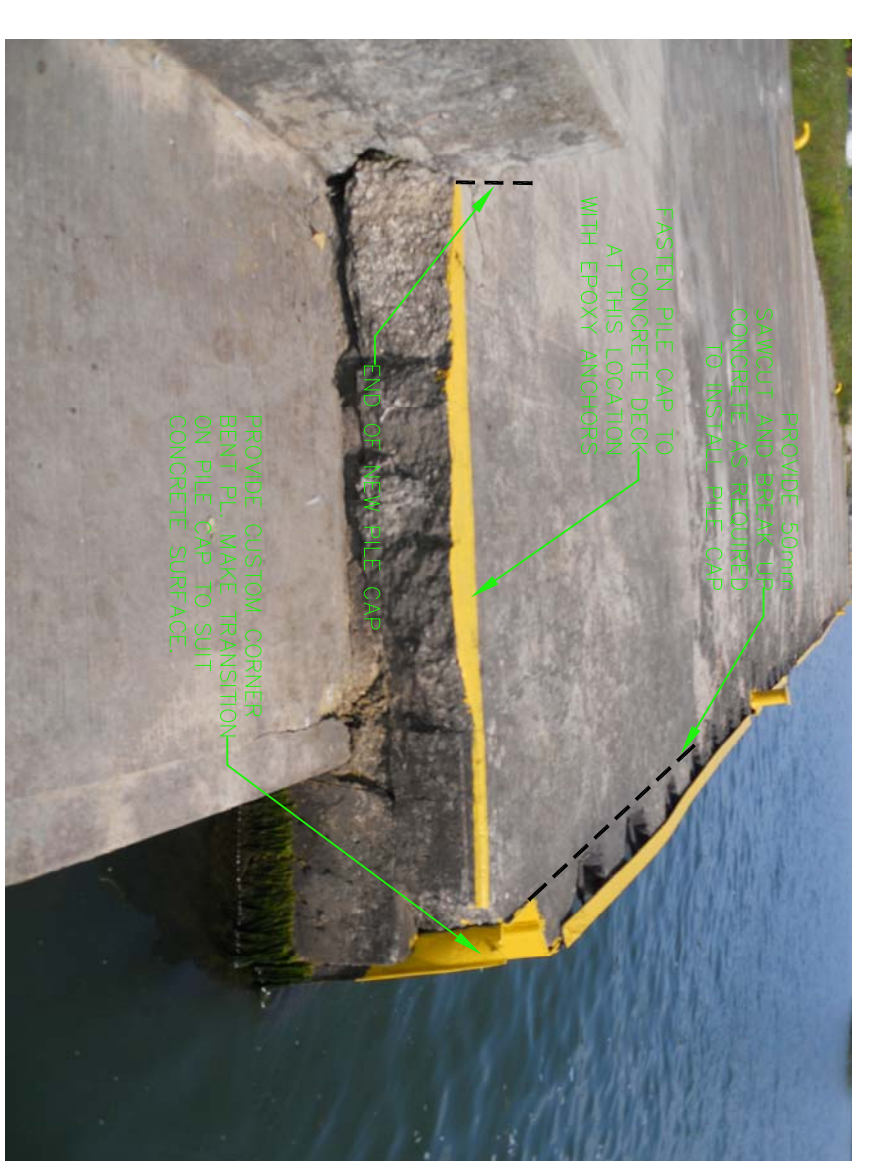


- NOTES:
- ELEVATIONS WERE TAKEN ON AUGUST 28 2015
 - CHART DATUM FOR LAKE ERIE IS 173.5m ABOVE SEA LEVEL.
 - WATER LEVEL AT THE TIME OF SURVEY WAS 1.02 ABOVE CHART DATUM
 - COORDINATES FOR HORIZONTAL CONTROL ARE GIVEN ON THE U.T.M. MAPPING PLANE, ZONE 18Q, USING THE NORTH AMERICAN DATUM OF 1983 (NAD83)
 - ALL MEASUREMENTS IN METERS UNLESS OTHERWISE NOTED.

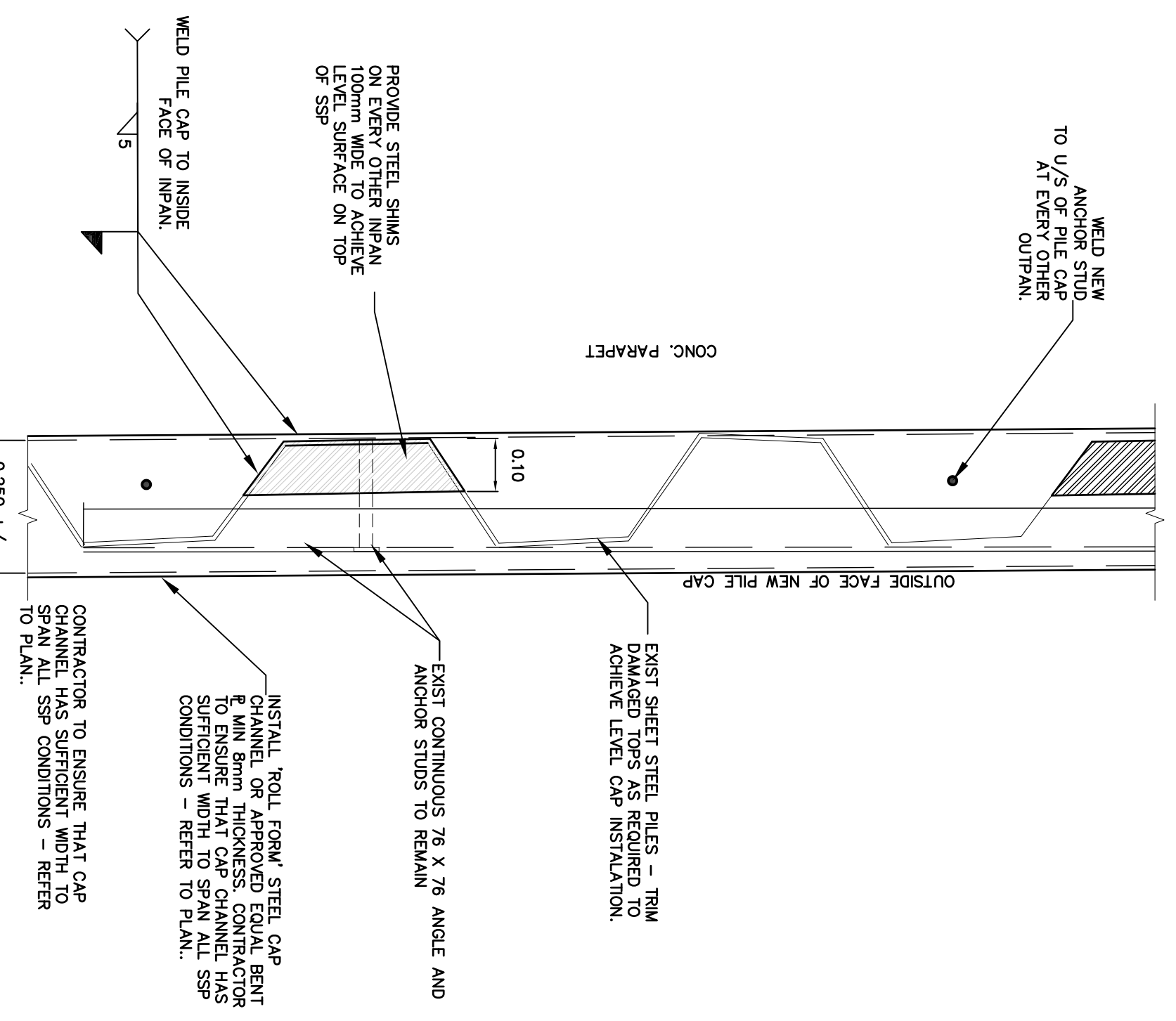


NEW CONCRETE WHARF PLAN
SCALE: 1:250
MA-02

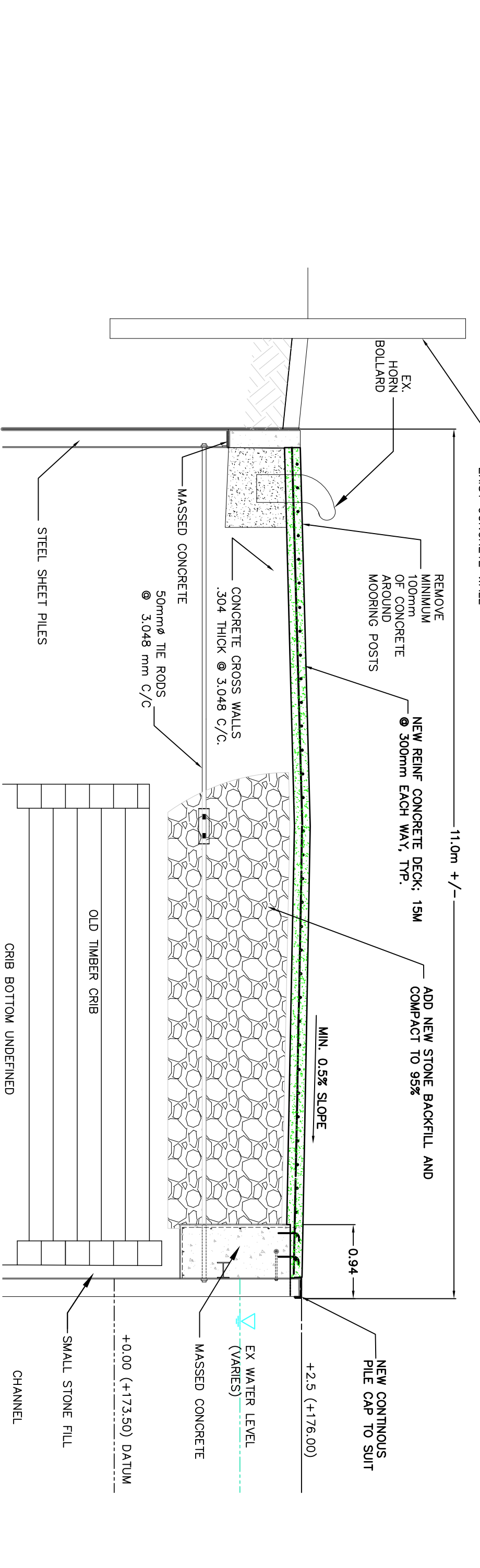
- GENERAL NOTES:**
- THE CONTRACTOR SHALL CORRECT THE POSITION OF ALL UTILITIES AND STRUCTURES TO BE REMOVED OR RELOCATED TO THE PROPOSED WHARF LOCATION. SUCH UTILITIES AND STRUCTURES AND SHALL ASSUME LIABILITY FOR DAMAGE TO THEM.
- DESCRIPTION OF WORK**
- THE SCOPE OF WORK UNDER THIS CONTRACT COVERS:
- CONCRETE SLAB REHABILITATION
- REMOVALS OF EXISTING CONCRETE WHERE INDICATED ALONG THE EXISTING WEST PIER.
 - THE INSTALLATION OF REINFORCEMENT AND FORMWORK ETC IN ORDER TO SATISFACTORILY COMPLETE THE DESIGNATED CONCRETE WORK.
 - THE FABRICATION AND INSTALLATION OF A NEW PILE CAP ALONG THE WHARF.
 - THE WORK TO BE DONE BY THE CONTRACTOR UNDER THIS CONTRACT SHALL INCLUDE THE FURNISHING OF ALL NECESSARY EQUIPMENT, OVERHEAD LABOUR, MATERIALS, EQUIPMENT, TOOLS, SUPPLIES, INSURANCE, AND ALL THINGS NECESSARY FOR AND INCIDENTAL TO THE SATISFACTORY PERFORMANCE OF ALL WORK SPECIFIED HEREIN. ALL WORK IS TO BE DONE IN ACCORDANCE WITH THE DETAILS SHOWN ON THE ACCOMPANYING PLANS AS SPECIFIED HEREIN.



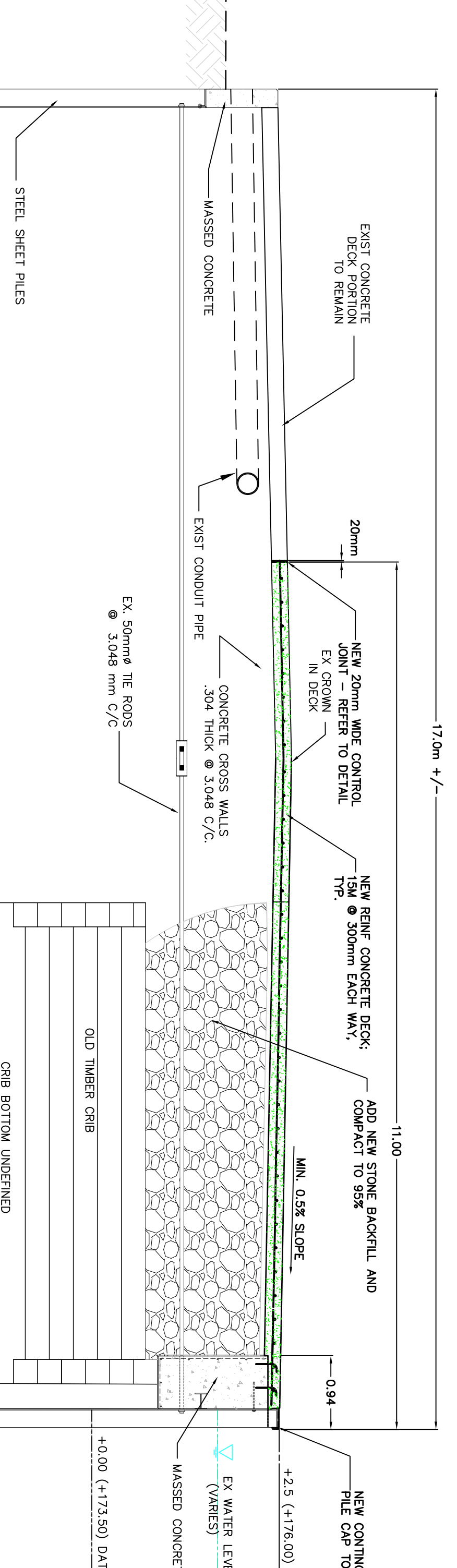
DETAIL AT STATION 0+000
SCALE: 1:10
MA-02



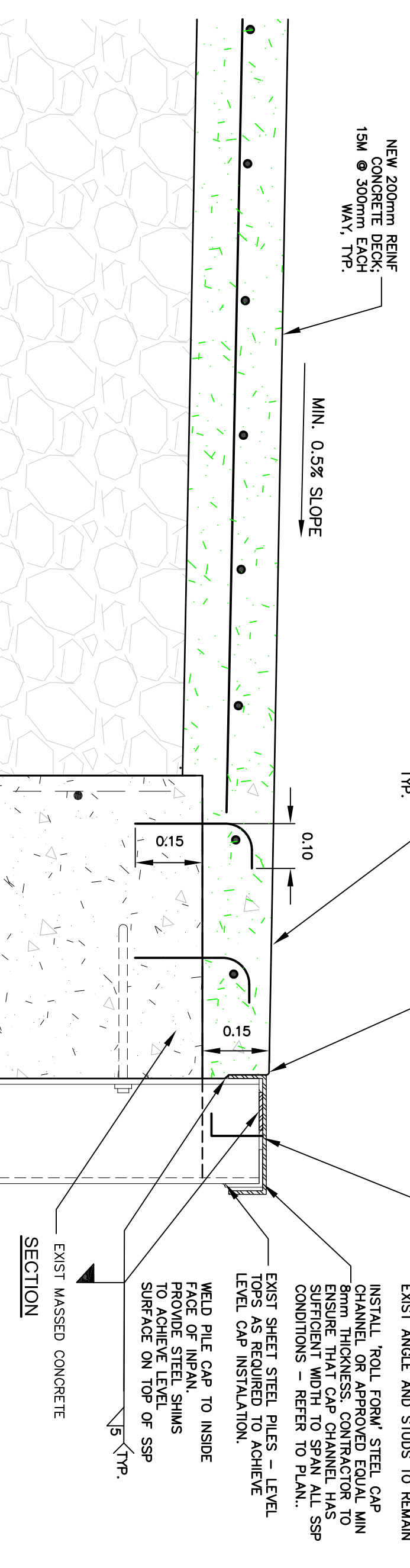
DETAIL AT PILE CAP
SCALE: 1:10
MA-02



WHARF SECTION TYPICAL STA 0+019 TO STA 0+033.5
SCALE: 1:30
MA-02



WHARF SECTION TYPICAL STA 0+003.1 TO STA 0+019
SCALE: 1:30
MA-02



TYPICAL EXPANSION JOINT DETAIL
SCALE: 1:10
MA-02

LEGEND

- PROJECT BASELINE
- EXISTING HORN BOLLARD
- EXISTING PIPE BOLLARD
- PROPERTY LINE
- EXISTING GROUND ELEVATION
- NEW EXPANSION JOINT
- DIRECTION OF SURFACE FLOW
- PROG. CONCRETE DECK
- PROG. PILE CAP

REVISIONS:

0	ISSUED FOR TENDER	2015-09-08
---	-------------------	------------

SCALE: AS NOTED

CLASS:

PROJECT: WEST PIER DECK REPAIRS

PROPOSED PLAN AND DETAILS

DRAWN: R.C.S	APPROVED: M.M
DATE: SEPT. 2015	DATE: SEPT. 2015
LOCATION: RONDEAU (ERIEAU) HARBOUR ONTARIO	
DRAWING NO.: MA-02	LOCATOR CODE: 4797