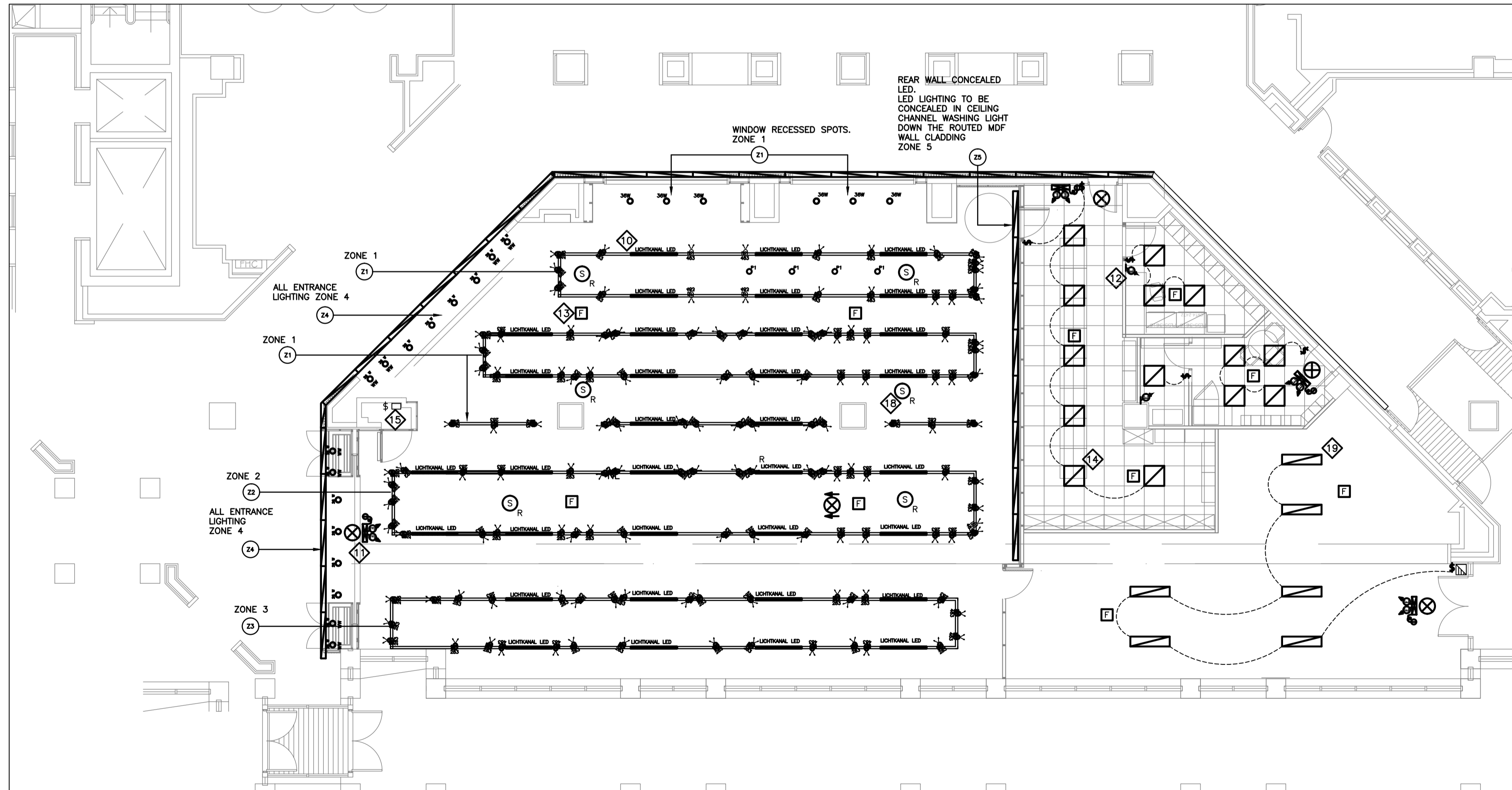


PARTIAL GROUND FLOOR PLAN - REFLECTED CEILING PLAN - EXISTING AND DEMOLITION

NTS: 1:100

- DRAWING NOTES:**
- 1 TYPICAL: EXISTING LIGHT FIXTURE TO REMAIN.
 - 2 TYPICAL: EXISTING LIGHTING CONTROL PANEL AND MASTER SWITCH TO REMAIN.
 - 3 TYPICAL: EXISTING RECESSED LIGHT FIXTURE TO BE REMOVED C/W ALL WIRING BACK TO ELECTRICAL PANEL.
 - 4 TYPICAL: EXISTING TRACK LIGHT FIXTURE TO BE REMOVED C/W TRACK, ALL WIRING BACK TO ELECTRICAL PANEL.
 - 5 TYPICAL: EXISTING RECESSED FLUORESCENT FIXTURE ALONG INTERIOR WALL TO BE REMOVED BACK TO ELECTRICAL PANEL.
 - 6 TYPICAL: EXISTING EXIT SIGN TO BE REMOVED C/W ALL CONDUIT, WIRING AND ASSOCIATED HARDWARE.
 - 7 TYPICAL: EXISTING EMERGENCY LIGHTING UNIT C/W ALL CONDUIT, WIRING AND ASSOCIATED HARDWARE.
 - 8 TYPICAL: EXISTING FIRE ALARM SPEAKER TO BE REMOVED C/W ALL CONDUIT WIRING AND ASSOCIATED HARDWARE.
 - 9 EXISTING FIRE ALARM PULL STATION TO REMAIN.
 - 10 TYPICAL: PROVIDE NEW LIGHT FIXTURE WITHIN RETAIL SHOP AS INDICATED IN ARCHITECTURAL DRAWING AB C/W ALL CONDUIT, WIRING AND ASSOCIATED HARDWARE.
 - 11 TYPICAL: PROVIDE NEW COMBINATION LED EXIT SIGN AND EMERGENCY LIGHTING UNIT C/W BATTERY PACK, ALL CONDUIT, WIRING AND ASSOCIATED HARDWARE.
 - 12 TYPICAL: PROVIDE NEW EMERGENCY LIGHTING REMOTE HEAD C/W ALL CONDUIT, WIRING AND ASSOCIATED HARDWARE.
 - 13 PROVIDE NEW FIRE ALARM SPEAKER C/W ALL CONDUIT, WIRING AND ASSOCIATED HARDWARE. TIE-IN EXISTING FA SYSTEM. CONTRACTOR IS RESPONSIBLE FOR ALL SYSTEM SHUT-DOWNS, BY-PASSES, COORDINATION, VERIFICATIONS AND FEES.
 - 14 TYPICAL: PROVIDE LITHONIA LIGHTING GT8-2X2 AND INSTALL IN NEW T-BAR CEILING C/W ALL CONDUIT, WIRING AND ASSOCIATED HARDWARE FOR AREAS OUTSIDE OF RETAIL SHOP. PROVIDE LIGHTING CONTROL SWITCH AS INDICATED.
 - 15 TYPICAL: EXISTING LIGHTING CONTROL PANEL TO BE USED TO CONTROL NEW LIGHTING, ZONES INDICATED ON DRAWING. PROVIDE 3 CIRCUITS TO ZONES 1-4, AND ON CIRCUIT TO ZONE 5.
 - 16 TYPICAL: EXISTING CAMERA TO BE REMOVED C/W ALL CONDUIT AND WIRING BACK TO SOURCE.
 - 17 TYPICAL: EXISTING MOTION SENSOR TO BE REMOVED C/W ALL CONDUIT AND WIRING BACK TO SOURCE.
 - 18 TYPICAL: EXISTING MUSIC SPEAKER TO BE RELOCATED AS PER NEW INSTALLATION DRAWING.



PARTIAL GROUND FLOOR PLAN - REFLECTED CEILING PLAN - EXISTING AND NEW

NTS: 1:100

ITEM	DESCRIPTION
	EMERGENCY LIGHTING UNIT
	EMERGENCY LIGHTING REMOTE HEADS
	EXIT LIGHT CEILING AND WALL MOUNTED
	TOGGLE SWITCH
	ELECTRICAL PANEL
	FIRE ALARM PULL STATION
	FIRE ALARM SPEAKER CEILING MOUNTED
	DUPLEX RECEPTACLE, WALL MOUNTED
	DUPLEX RECEPTACLE MOUNTED ABOVE COUNTER
	DUPLEX RECEPTACLE, CEILING MOUNTED
	DUPLEX RECEPTACLE, FLOOR MONUMENT
	DATA/TELEPHONE OUTLET, WALL MOUNTED
	DATA OUTLET, CEILING MOUNTED
	COMBINATION DUPLEX RECEPTACLE AND DATA OUTLET, FLOOR MONUMENT
	FLUORESCENT LIGHT FIXTURE GTS 2X2 - T-BAR TYPE
	LED TRACK LIGHTING - REFER TO ARCHITECTURAL DRAWINGS FOR LIGHTING SCHEDULE
	TRACK LIGHTING - REFER TO ARCHITECTURAL DRAWINGS FOR LIGHTING SCHEDULE
	LED RECESSED LIGHT - REFER TO ARCHITECTURAL DRAWINGS FOR LIGHTING SCHEDULE
	MUSIC SPEAKER/MOTION SENSOR/CAMERA

NOT ALL SYMBOLS SHOWN IN LEGEND SET ARE NECESSARILY USED IN DRAWING SET.

- GENERAL NOTES:**
- 1 ALL ELECTRICAL EQUIPMENT SHOWN IN THIN SOLID LINES IS EXISTING TO REMAIN.
 - 2 ALL ELECTRICAL EQUIPMENT SHOWN IN THICK SOLID LINES IS NEW TO BE PROVIDED UNDER THIS CONTRACT, TOGETHER WITH ALL ASSOCIATED CONDUITS AND WIRING.
 - 3 ALL ELECTRICAL EQUIPMENT SHOWN IN THICK DASHED LINES WITH LETTER 'R' IS EXISTING TO BE RELOCATED AS SHOWN. EXTEND ALL CONDUITS AND WIRING TO SUIT.
 - 4 ALL ELECTRICAL EQUIPMENT SHOWN IN THICK DASHED LINES WITH LETTER 'X' IS EXISTING TO BE REMOVED C/W ALL CONDUIT, WIRING AND ASSOCIATED HARDWARE BACK TO NEAREST J/B.
 - 5 FOR ANY REQUIRED SHUT DOWN, CONTRACTOR TO COORDINATE WITH SITE MANAGER AND OBTAIN APPROVAL BEFORE SHUT DOWN CAN BE PERFORMED.
 - 6 FIRE ALARM SYSTEM TO REMAIN OPERATIONAL FOR DURATION OF THIS PROJECT, PROVIDE DUST PROTECTION. PROVIDE FIRE WATCH IF REQUIRED.
 - 7 PROVIDE NEW BREAKERS AS REQUIRED IN EXISTING ELECTRICAL PANELS TO ACCOMMODATE NEW CONNECTIONS. ALSO PROVIDE BLANK PLATES WHERE CIRCUIT BREAKERS ARE NOT INSTALLED. PROVIDE NEW TYPED PANEL LEGEND TYPICAL FOR ALL PANELS TOUCHED BY THIS CONTRACT. TURN OVER TO THE OWNER ALL BREAKERS REMOVED UNDER THIS CONTRACT.
 - 8 ALL EXISTING AND NEW CONDUITS AND WIRING PASSING THRU FLOOR AND FIRE RATED WALLS TO BE FIRE STOP USING 3M FIRE RETARDANT MASTIC SEALANT NO EQUIVALENT.
 - 9 ALL WIRING TO BE R/RW90, MINIMUM SIZE #12AWG COPPER, IN EMT CONDUIT UNLESS OTHERWISE NOTED.
 - 10 ALL ELECTRICAL CIRCUITS ARE SHOWN FOR GROUPING PURPOSES ONLY. CONTRACTOR TO USE AVAILABLE CIRCUITS IN EXISTING ELECTRICAL PANELS. REUSE EXISTING AND/OR PROVIDE NEW ELECTRICAL BREAKERS AS REQUIRED.
 - 11 COORDINATE ALL WORK WITH ARCHITECTURAL AND MECHANICAL CONTRACTORS.
 - 12 SEISMIC RESTRAINT SYSTEM (SRS) - PROVIDE DESIGN, SUPPLY AND INSTALLATION OF COMPLETE SRS FOR ALL SYSTEMS. EQUIPMENT SPECIFIED FOR INSTALLATION ON THIS PROJECT AS PER ONTARIO BUILDING CODE LATEST EDITION. THIS INCLUDES ELECTRICAL LIGHT FIXTURES, UPS, FIRE PROTECTION, CONDUIT, COMMUNICATIONS, ELECTRICAL EQUIPMENT AND SYSTEMS, BOTH

	Fagerhult Retail Global Track 3-Circuit Recessed Downlight LED 2305mm 29W 3000K Hole opening: 105 mm - Recessed: 105 mm Colour: White, Art.No. CSALP 40.20.30.50		Fagerhult Reflejos Wallwasher LED Wallwasher LED 60W 1500mm 830 Asymmetric Colour: White, Art.No. TFSW 183.20.30
	Fagerhult Retail 80x80 LED Spotlight LED 27W 2175mm Colour: White, Art.No. B0XX 102.30.50.2		Fagerhult Retail LichtKanal 45 Length: 45 mm - Height: 60 mm - Width: 45 mm
	Fagerhult Retail LichtKanal LED		Fagerhult Retail Reconnamed Recessed Spotlight LED 36W 2680mm 830 Colour: White, Art.No. B0XX 153.30.30
	Fagerhult Retail LichtKanal Channel with track inserts and blanking plates		Fagerhult Retail suspended track

JRP ENGINEERING
Professional Engineers

9 Holgate Court, Kanata, ON K2K 1B4
Tel: (613) 266-8226 Email: admin@jrpeng.com

An exact copy of all working documents including, without limitations, the original of the present document or plan is kept on file by J.R.P. Engineering. Any modification carried out to this document or plan or to accompanying documents without written authorization by the engineer is prohibited.

Authorized modifications must be signed and sealed by an engineer and this engineer will be completely responsible for these modifications. J.R.P. Engineering is not and will not be responsible for the consequences of these modifications or for modifications carried out without its consent.

No	DESCRIPTION	DATE
0	ISSUED FOR TENDER R2	SEP. 17 2015

REVISIONS

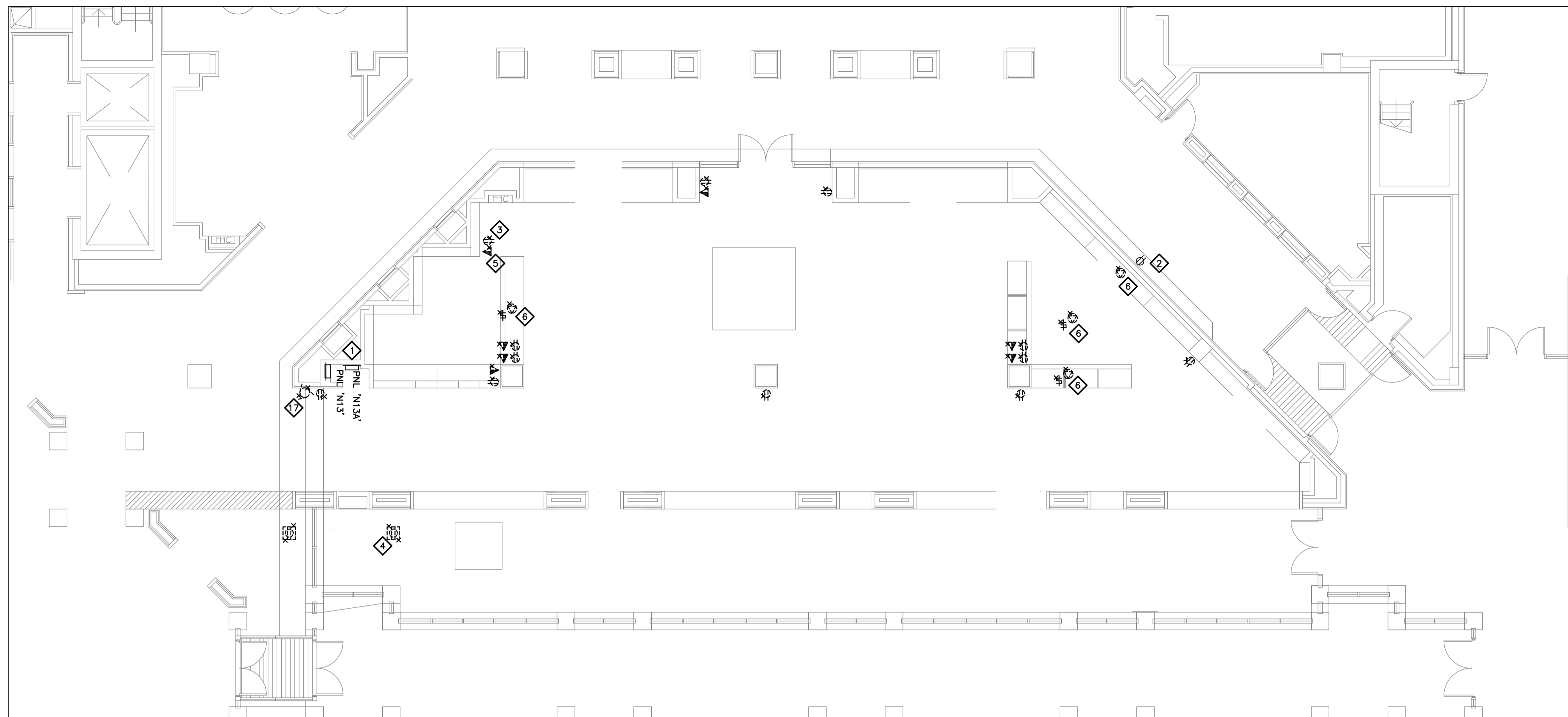
NATIONAL GALLERY OF CANADA

NEW RETAIL STORE
380 SUSSEX DR.
OTTAWA, ONTARIO

REFLECTED CEILING PLAN
DEMO AND NEW

scale:	AS SHOWN	drawn by:	M.M.K.
designed by:	M.M.K.	reviewed by:	J.R.P.
approved by:	J.R.P.	date:	AUG. 2015

project no.:	100-161	drawing no.:	E-1
revision:	<0>		of 4

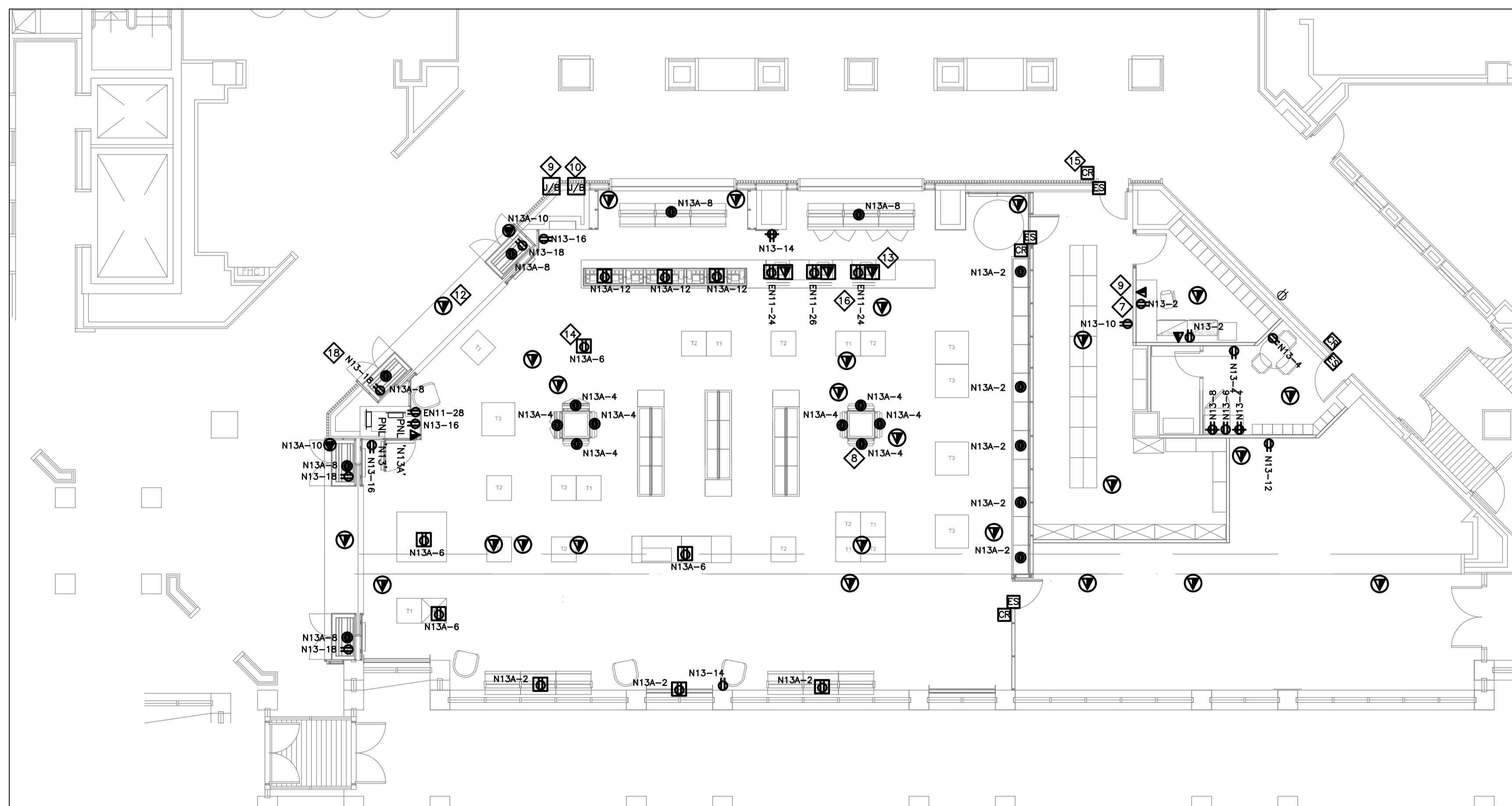


PARTIAL GROUND FLOOR PLAN – ELECTRICAL DISTRIBUTION – EXISTING AND DEMOLITION

NTS: 1:100

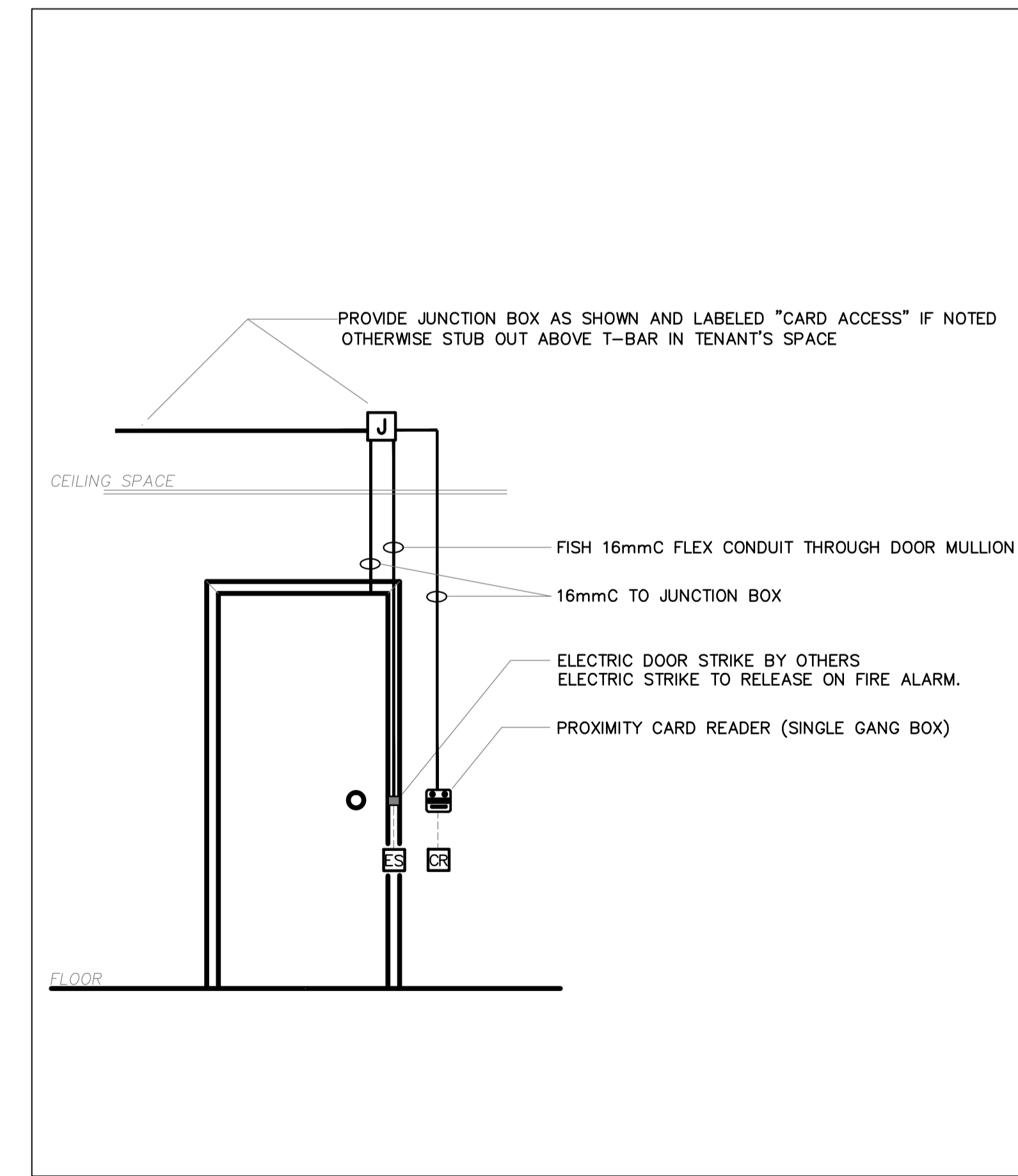
DRAWING NOTES:

- 1 TYPICAL: EXISTING ELECTRICAL PANEL TO REMAIN.
- 2 TYPICAL: EXISTING DUPLEX RECEPTACLE TO REMAIN.
- 3 TYPICAL: EXISTING DUPLEX RECEPTACLE TO BE REMOVED C/W ALL CONDUIT AND WIRING BACK TO PANEL.
- 4 TYPICAL: EXISTING FLOOR MONUMENT TO BE REMOVED C/W ALL CONDUIT AND WIRING BACK TO PANEL.
- 5 TYPICAL: EXISTING VOICE/DATA TO BE REMOVED C/W ALL CONDUIT.
- 6 TYPICAL: EXISTING DISPLAY LIGHTING TO BE REMOVED C/W ALL CONDUIT AND WIRING BACK TO PANEL.
- 7 TYPICAL: PROVIDE NEW DUPLEX RECEPTACLE, 5-15R, UNLESS OTHERWISE INDICATED, C/W ALL CONDUIT, WIRING AND ASSOCIATED HARDWARE. REFER TO ARCHITECTURAL DRAWINGS FOR EXACT LOCATION.
- 8 TYPICAL: PROVIDE NEW CEILING MOUNTED RECEPTACLE, 5-15R, UNLESS OTHERWISE INDICATED, C/W ALL CONDUIT, WIRING AND ASSOCIATED HARDWARE. REFER TO ARCHITECTURAL DRAWINGS FOR EXACT LOCATION.
- 9 PROVIDE 300X300 J/B IN CEILING SPACE OF BOOKSTORE TO BE USED FOR IT EQUIPMENT WITH ALL CONDUIT (53mmC) BACK TO IT ROOM AS INDICATED ON DRAWING E-3. CONTRACTOR TO SCAN AND CORE DRILL, DESIGNATED SUBSTANCES PRESENT, REFER TO FRONT END FOR PROCEDURE.
- 10 PROVIDE 300X300 J/B IN CEILING SPACE OF BOOKSTORE TO BE USED FOR SECURITY EQUIPMENT WITH ALL CONDUIT (53mmC) BACK TO SECURITY ROOM AS INDICATED ON DRAWING E-3. CONDUIT TO BE MARKED BLACK AND ORANGE. CONTRACTOR TO SCAN AND CORE DRILL, DESIGNATED SUBSTANCES PRESENT, REFER TO FRONT END FOR PROCEDURE.
- 11 TYPICAL: PROVIDE DATA/VOICE OUTLET C/W 21mmC CONDUIT BACK TO IT J/B IN CEILING SPACE OF BOOKSTORE.
- 12 TYPICAL: PROVIDE DATA OUTLET FOR SECURITY EQUIPMENT IN CEILING C/W 21mmC CONDUIT BACK TO SECURITY J/B IN CEILING SPACE OF BOOKSTORE.
- 13 TYPICAL: PROVIDE COMBINATION DUPLEX RECEPTACLE AND DATA/VOICE FLOOR MONUMENT C/W 21mmC CONDUIT INTO PARKING GARAGE. CONTRACTOR TO SCAN AND CORE DRILL, DESIGNATED SUBSTANCES PRESENT, REFER TO FRONT END FOR PROCEDURE.
- 14 TYPICAL: PROVIDE DUPLEX RECEPTACLE FLOOR MONUMENT C/W 21mmC CONDUIT INTO PARKING GARAGE. CONTRACTOR TO SCAN AND CORE DRILL, DESIGNATED SUBSTANCES PRESENT, REFER TO FRONT END FOR PROCEDURE.
- 15 TYPICAL: PROVIDE CARD READER AND ELECTRIC STRIKE C/W ALL CONDUIT WIRING AND ASSOCIATED HARDWARE.
- 16 FOR CIRCUITS FROM PANEL EN-11, PROVIDE ALL CONDUIT AND WIRING BACK TO ELECTRICAL ROOM INDICATED ON DRAWING E-3.
- 17 EXISTING MOTOR CONNECTION TO OVERHEAD DOOR TO BE REMOVED C/W ALL CONDUIT AND WIRING BACK TO PANEL.
- 18 TYPICAL: DUPLEX RECEPTACLE TO BE MOUNTED WITHIN VITRINE ON BOTTOM SHELF.



PARTIAL GROUND FLOOR PLAN – ELECTRICAL DISTRIBUTION – EXISTING AND NEW

NTS: 1:100



SECURE DOOR – TYPICAL DETAIL

NTS: 1:100

An exact copy of all working documents including, without limitations, the original of the present document or plan is kept on file by J.R.P. Engineering. Any modification carried out to this document or plan or to accompanying documents without written authorization by the engineer is prohibited.

Authorized modifications must be signed and sealed by an engineer and this engineer will be completely responsible for these modifications. J.R.P. Engineering is not and will not be responsible for the consequences of these modifications or for modifications carried out without its consent.

No	DESCRIPTION	DATE
0	ISSUED FOR TENDER R2	SEP. 17 2015

REVISIONS	

client:
NATIONAL GALLERY OF CANADA

project:
NEW RETAIL STORE
380 SUSSEX DR.
OTTAWA, ONTARIO

drawing title:
**REFLECTED CEILING PLAN
DEMO AND NEW**

scale:	AS SHOWN	drawn by:	M.M.K.
designed by:	M.M.K.	reviewed by:	J.R.P.
approved by:	J.R.P.	date:	AUG. 2015

project no.:	100-161	drawing no.:	E-2
revision:	<0>		of 4

An exact copy of all working documents including, without limitations, the original of the present document or plan is kept on file by J.R.P. Engineering. Any modification carried out to this document or plan or to accompanying documents without written authorization by the engineer is prohibited.

Authorized modifications must be signed and sealed by an engineer and this engineer will be completely responsible for these modifications. J.R.P. Engineering is not and will not be responsible for the consequences of these modifications or for modifications carried out without its consent.

No	DESCRIPTION	DATE
0	ISSUED FOR TENDER R2	SEP. 17 2015

REVISIONS	

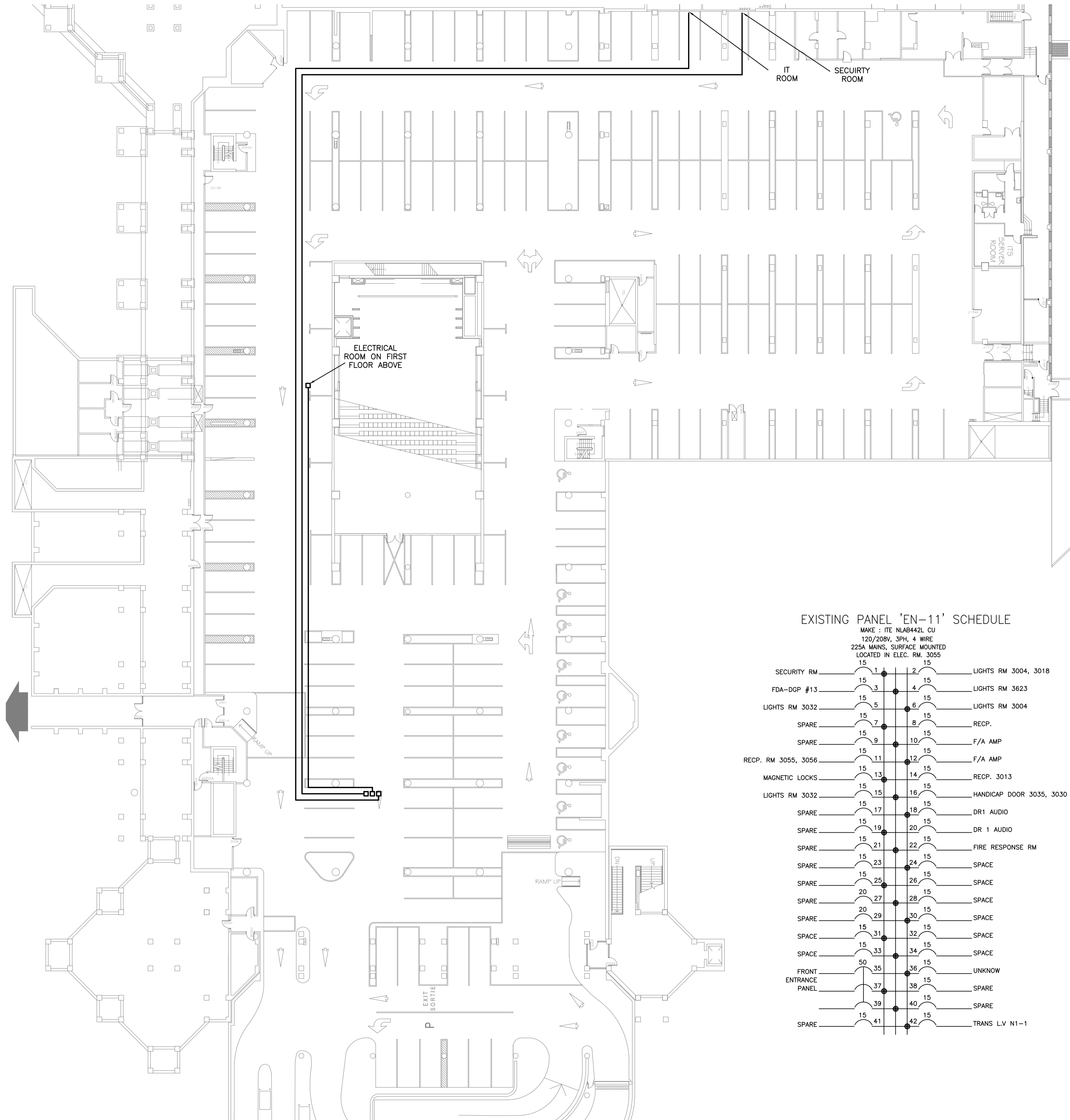
client:
NATIONAL GALLERY OF CANADA

project:
NEW RETAIL STORE
380 SUSSEX DR.
OTTAWA, ONTARIO

drawing title:
PANEL LEGEND AND CONDUIT ROUTING IN P1

scale:	AS SHOWN	drawn by:	M.M.K.
designed by:	M.M.K.	reviewed by:	J.R.P.
approved by:	J.R.P.	date:	AUG. 2015

project no.:	100-161	drawing no.:	E-3
revision:	<0>		of 4



EXISTING PANEL 'N-13A' SCHEDULE

MAKE : ITE NLAB448L
120/208V, 3PH, 4 WIRE
225A MAINS, SURFACE MOUNTED
LOCATED IN ELEC. RM. WITHIN BOOKSTORE

UPS	1	2	TRACK LIGHTING
UPS	3	4	TRACK LIGHTING
UPS	5	6	SWITCH
SPARE	7	8	TRACK LIGHTING
PANEL RECP.	9	10	TRACK LIGHTING
CORRIDOR SHOWCASE	11	12	TRACK LIGHTING
TRACK LIGHTING	13	14	TRACK LIGHTING
TRACK LIGHTING	15	16	TRACK LIGHTING
SECURITY CABINET	17	18	TRACK LIGHTING
TRACK LIGHTING	19	20	TRACK LIGHTING
TRACK LIGHTING	21	22	TRACK LIGHTING
TRACK LIGHTING	23	24	TRACK LIGHTING
TRACK LIGHTING	25	26	TRACK LIGHTING
TRACK LIGHTING	27	28	TRACK LIGHTING
TRACK LIGHTING	29	30	TRACK LIGHTING
TRACK LIGHTING	31	32	TRACK LIGHTING
TRACK LIGHTING	33	34	TRACK LIGHTING
TRACK LIGHTING	35	36	TRACK LIGHTING
TRACK LIGHTING	37	38	TRACK LIGHTING
CASH RECP.	39	40	WORK AREA LTG
CASH RECP.	41	42	TRACK LIGHTING

EXISTING PANEL 'EN-11' SCHEDULE

MAKE : ITE NLAB442L CU
120/208V, 3PH, 4 WIRE
225A MAINS, SURFACE MOUNTED
LOCATED IN ELEC. RM. 3055

SECURITY RM	1	2	LIGHTS RM 3004, 3018
FDA-DGP #13	3	4	LIGHTS RM 3623
LIGHTS RM 3032	5	6	LIGHTS RM 3004
SPARE	7	8	RECP.
SPARE	9	10	F/A AMP
RECP. RM 3055, 3056	11	12	F/A AMP
MAGNETIC LOCKS	13	14	RECP. 3013
LIGHTS RM 3032	15	16	HANDICAP DOOR 3035, 3030
SPARE	17	18	DR1 AUDIO
SPARE	19	20	DR 1 AUDIO
SPARE	21	22	FIRE RESPONSE RM
SPARE	23	24	SPACE
SPARE	25	26	SPACE
SPARE	27	28	SPACE
SPARE	29	30	SPACE
SPACE	31	32	SPACE
SPACE	33	34	SPACE
FRONT ENTRANCE PANEL	35	36	UNKNOWN
	37	38	SPARE
	39	40	SPARE
SPARE	41	42	TRANS L.V. N1-1

EXISTING PANEL 'N-13' SCHEDULE

MAKE : ITE NLAB442L CU
120/208V, 3PH, 4 WIRE
225A MAINS, SURFACE MOUNTED
LOCATED IN ELEC. RM. WITHIN BOOKSTORE

LIGHTS RM 3004	1	2	LIGHTS RM 3004
LIGHTS RM 3004	3	4	LIGHTS RM 3004
LIGHTS RM 3004	5	6	LIGHTS RM 3004
LIGHTS RM 3004	7	8	FLOOR CASH
LIGHTS RM 3004	9	10	LIGHTS RM 3004
LIGHTS RM 3004	11	12	LIGHTS RM 3004
LIGHTS RM 3004	13	14	LIGHTS RM 3004
LIGHTS RM 3004	15	16	LIGHTS RM 3004
LIGHTS RM 3004	17	18	LIGHTS RM 3004
LIGHTS RM 3004	19	20	LIGHTS RM 3004
LIGHTS RM 3004	21	22	LIGHTS RM 3004
LIGHTS RM 3004	23	24	LIGHTS RM 3004
LIGHTS RM 3004	25	26	LIGHTS RM 3004
LIGHTS RM 3004	27	28	LIGHTS RM 3004
LIGHTS RM 3004	29	30	LIGHTS RM 3004
CHILDREN'S BOOKSTORE PANEL	31	32	DOOR OPERATOR
	33	34	
	35	36	
LIGHTS OFFICE AREA	37	38	SOUTH CASH
LIGHTS OFFICE AREA	39	40	DISPLAY CASE
SPARE	41	42	WEST WALL

