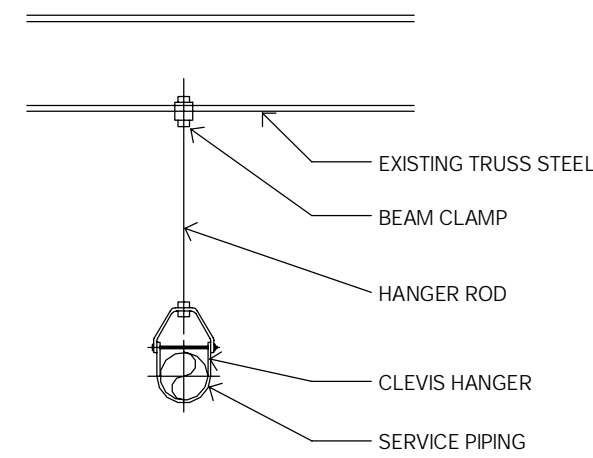
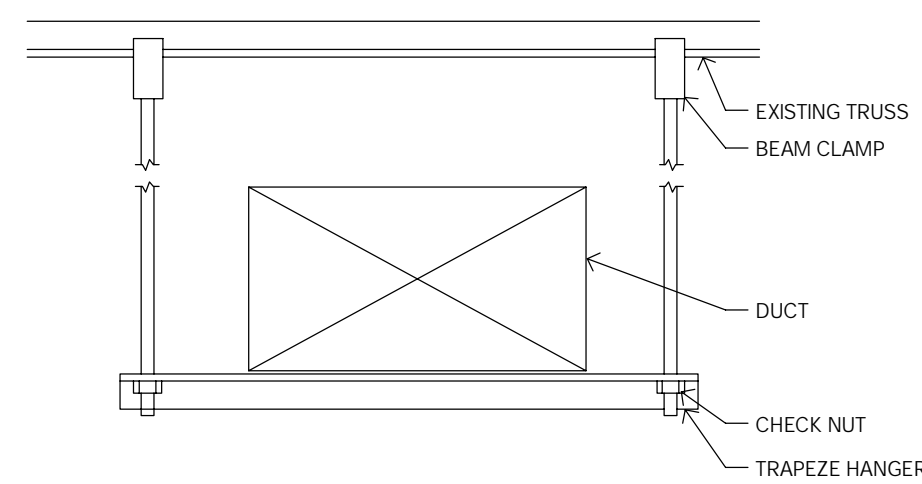


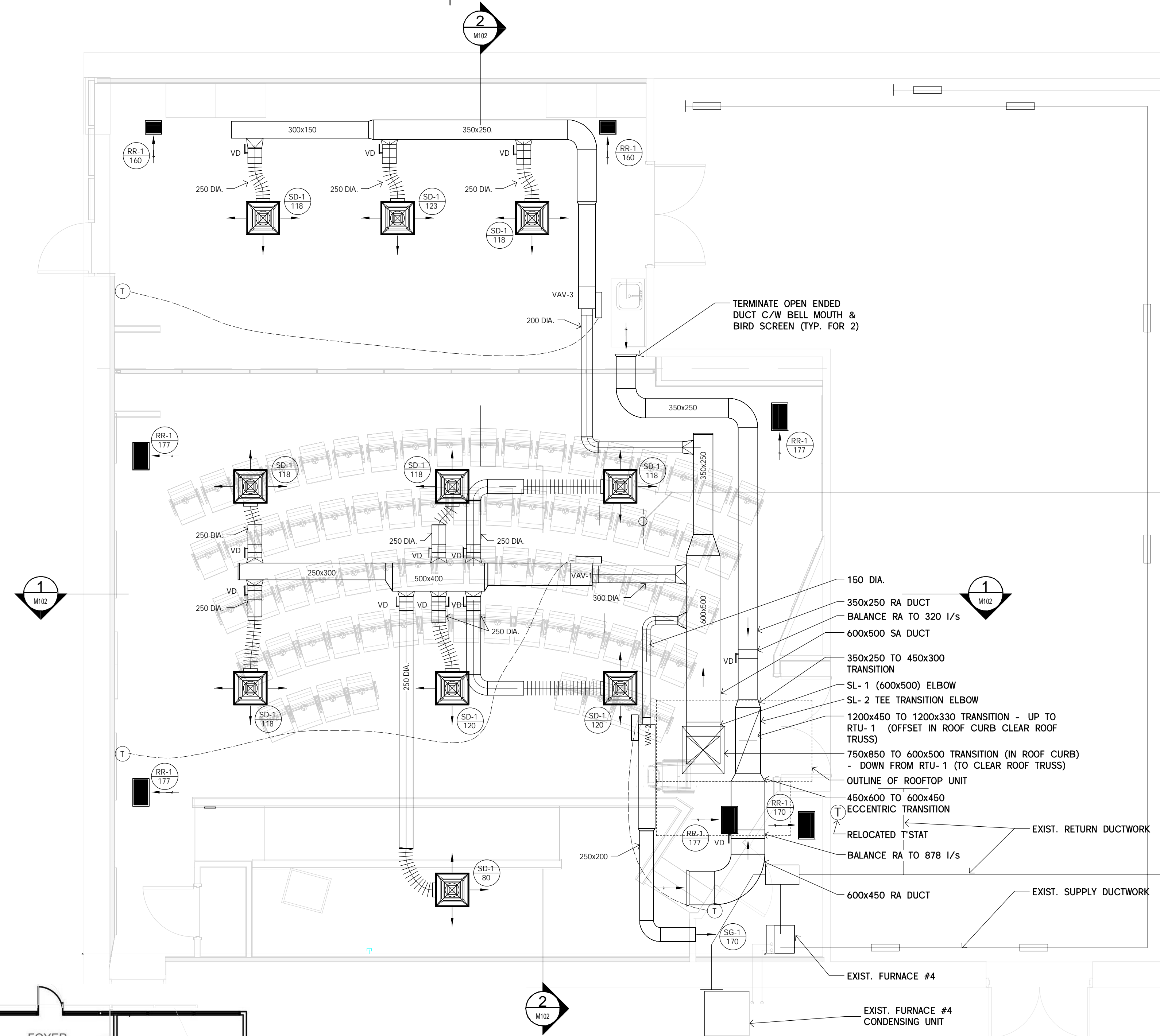
DETAIL-VAV TERMINAL



DETAIL-PIPE HANGER

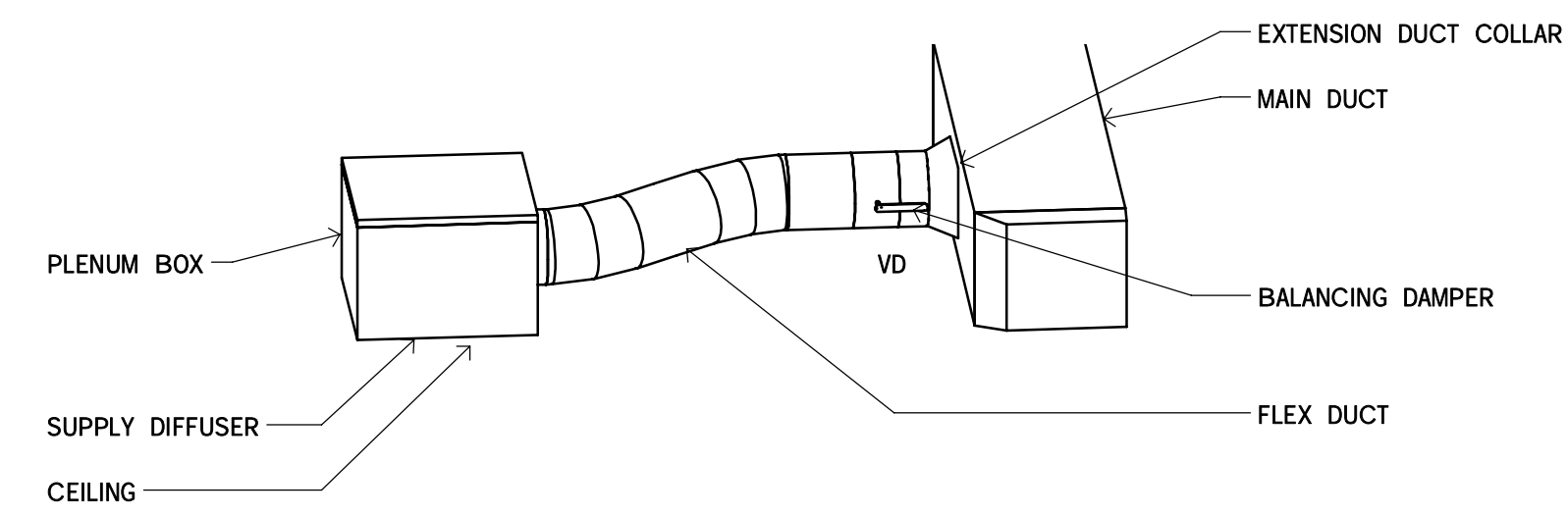


DETAIL-DUCT HANGER

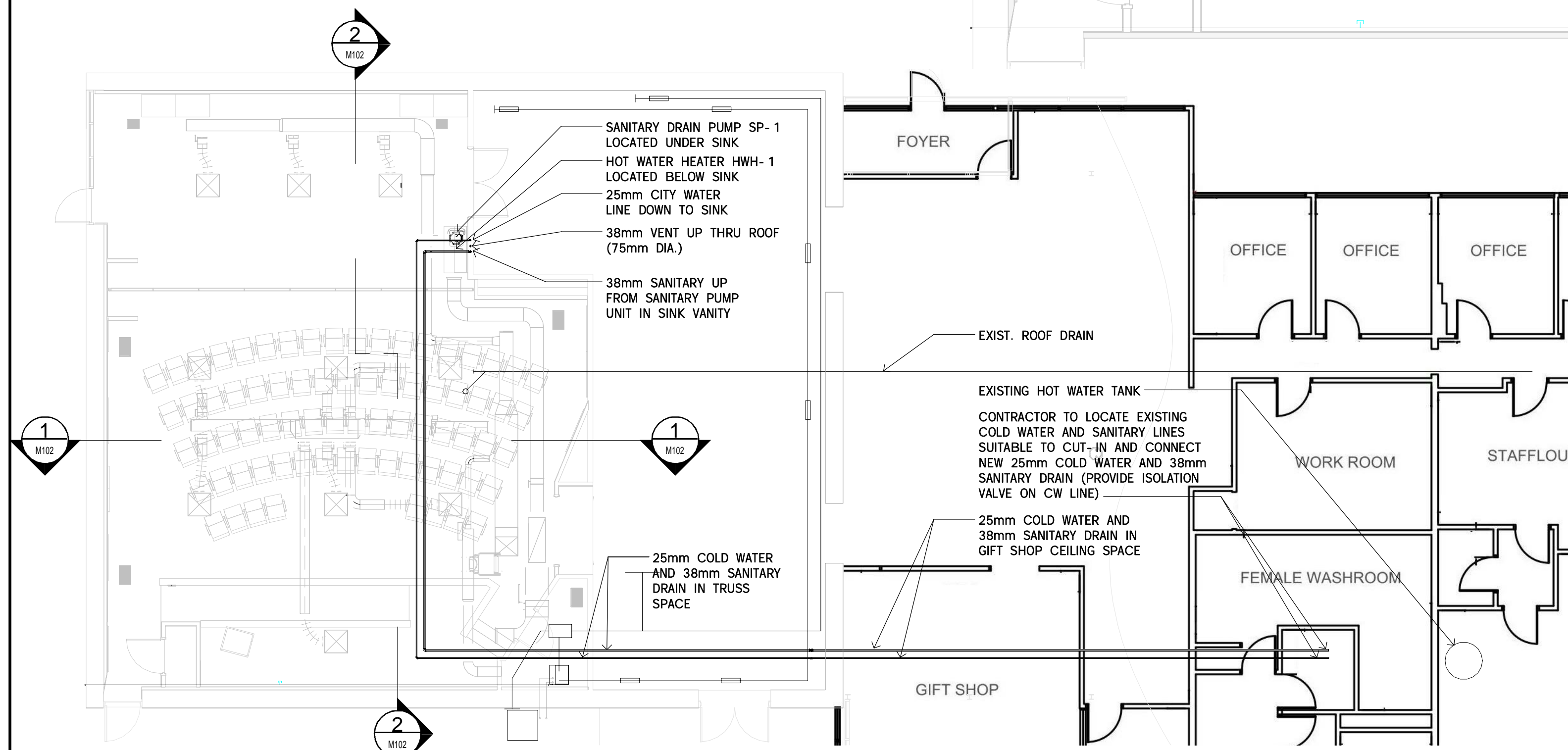


FLOOR PLAN - HVAC
SCALE: 1:50

NOTE:
CONTRACTOR TO INSTALL ALL MECHANICAL DUCTWORK AS HIGH AS POSSIBLE - BETWEEN ROOF JOIST WHERE POSSIBLE



DETAIL - FLEX DUCT CONNECTION
SCALE:



FLOOR PLAN - PLUMBING
SCALE: 1:100



NOT FOR CONSTRUCTION

Conditions of Use
Verify elevations and/or dimensions on drawing prior to use. Report any discrepancies to Dillon Consulting Limited.
Do not scale dimensions from drawing.
Do not modify drawing, re-use it, or use it for purposes other than those intended at the time of its preparation without prior written permission from Dillon Consulting Limited.

1	ISSUED FOR TENDER	2015-08-26
revision		date

Do not scale drawings.
Verify all dimensions and conditions on site and immediately notify the engineer of all discrepancies.

A	Detail No.	No. du detail
B	drawing no. - where detail required	dessin no. - ou detail exigé
C	drawing no. - where detailed	dessin no. - ou détaillé

project title
titre du projet
LEAMINGTON ONTARIO
PARKS CANADA
1118 POINT PEELE DR.
LEAMINGTON, N8H 3V4
VISITOR CENTRE THEATRE

drawing title
titre du dessin
MECHANICAL FLOOR PLANS - HVAC & PLUMBING

drawn by
dessiné par
TKD

designed by
conc. par
CWW

approved by
approuvé par
LDP

tender submission
project manager
MARK MAJOR administrateur de projets

project date
date du projet
2014/02/21

project no.
no. du projet
138383

drawing no.
dessiné no.
M101