

Addendum / Addenda

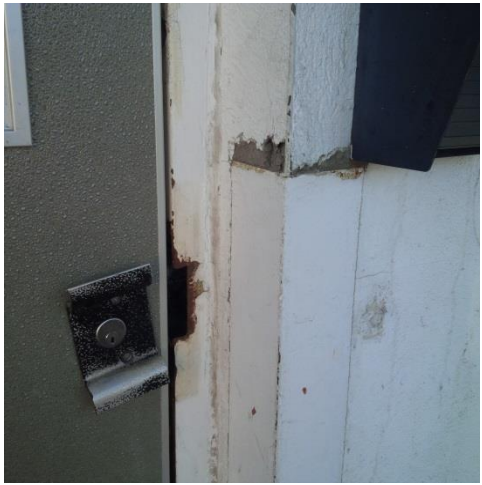
Project Description / Description de projet		
M58 Abatement Ground Floor South		
Solicitation No./N° de sollicitation	Project No./N° de projet	W.O. No./N° d'ordre de travail
15-22093	5083	A1-006947-04-01
Departmental Representative / représentant ministériel		Date
Mark O'Connor		October 7, 2015
Notice:		Nota:
This addendum shall form part of the tender documents and all conditions shall apply and be read in conjunction with the original plans and specifications.		Cet addenda fait partie intégrale des dossiers d'appel; toutes les conditions énoncées doivent être lues et appliquées en conjonction avec les plans et les devis originaux.

- 1 Steel drawings attached for reference. Drawing #S21
- 2 Scale architectural drawing attached for reference. Dated Oct 6 2015. Pipe chase noted on drawing that contractor must open to allow for abatement.
- 3 Drawing 5083-AB02 Step 1 description is to be replaced as follows:
 'Over a single weekend, using the existing supplied air breathing apparatus installed during Phase 1A, construct a separate Type 3 maximum precaution enclosure (excluding ceiling seals) that incorporates a section of the corridor that includes the existing door to office SG-01, that must be closed and sealed (as per the shaded area). A separate decontamination system from the system already installed for Phase 1A will also be required.
- 4 Drawing 5083-AB01 Step 2 description shall also include:
 'Provide an opening in the terracotta wall in the south-east corner of room SG-01, to access the pipe chase on the opposite side. Ensure the opening is structurally sound. Remove all fiberglass insulation within the pipe chase, from floor to ground floor ceiling level. Install upper ceiling comprised of polyethylene sheeting to include pipe chase as part of Phase 1A Type 3 asbestos enclosure.
- 5 Drawing 5083-AB02 Step 4 Delete part of note: "Widening of the door to office SG-01 will be completed by NRC." and replace with "Widening of the door to office SG-01 will be completed by the contractor, opening will be a minimum of 6' wide and clay block will be removed from slab to slab. Remaining block will be protected with wood frame."
- 6 Window blinds to be removed and disposed of by contractor.
- 7 Clarification: Existing concrete ceiling is poured on a corrugated steel deck. Drawing #S9 Floor and Roof Construction attached for reference.
- 8 Existing Dumb Waiter, located in the NW corner of room SG-27, shaft is to be include as part of this project in Phase 1A maximum precautions. NRC to carry the elevator contractor to shutdown and move elevator car, contractor is to supply all scaffolding and seals to complete the cleaning of the entire shaft including basement , first and second floor. Pictures on page 2.

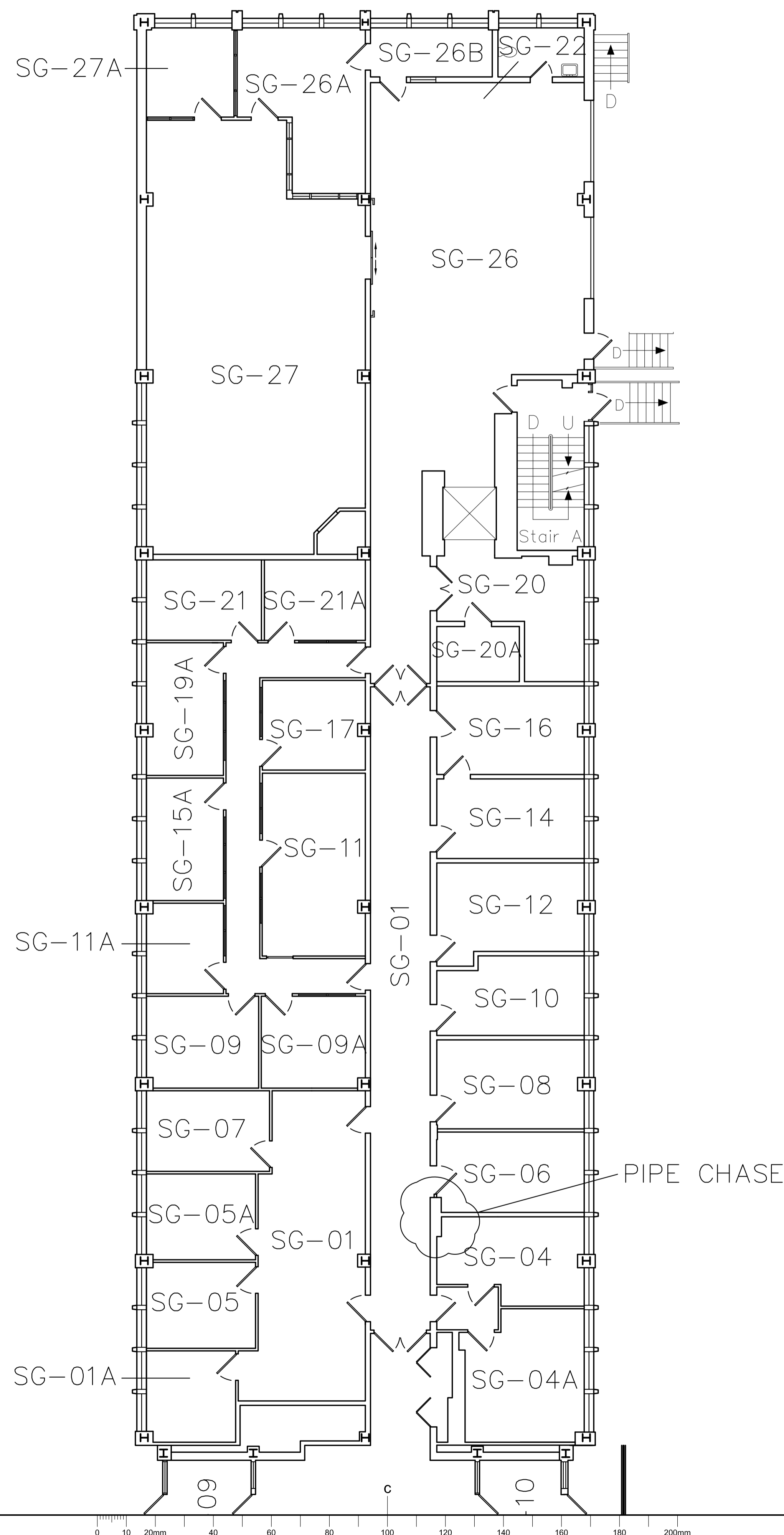
...page 2



9 Loading dock exterior person door with glass transom to have cementitious finishing material removed from 3 sides of the exterior up to garage door #6, including return during Phase 2 under maximum precautions. Three steel corner guards removed. Approximately 35sqft. Pictures below.



End of Addendum



0	OCT. 6, 2015	ISSUED FOR INFORMATION	DIF
No.	Date	Revision	By: Par:

Date Printed DD MM YYYY Date imprimée

- Verify all dimensions and site conditions and be responsible for same
- Vérifier toutes les dimensions et l'état des lieux et en assumer la responsabilité

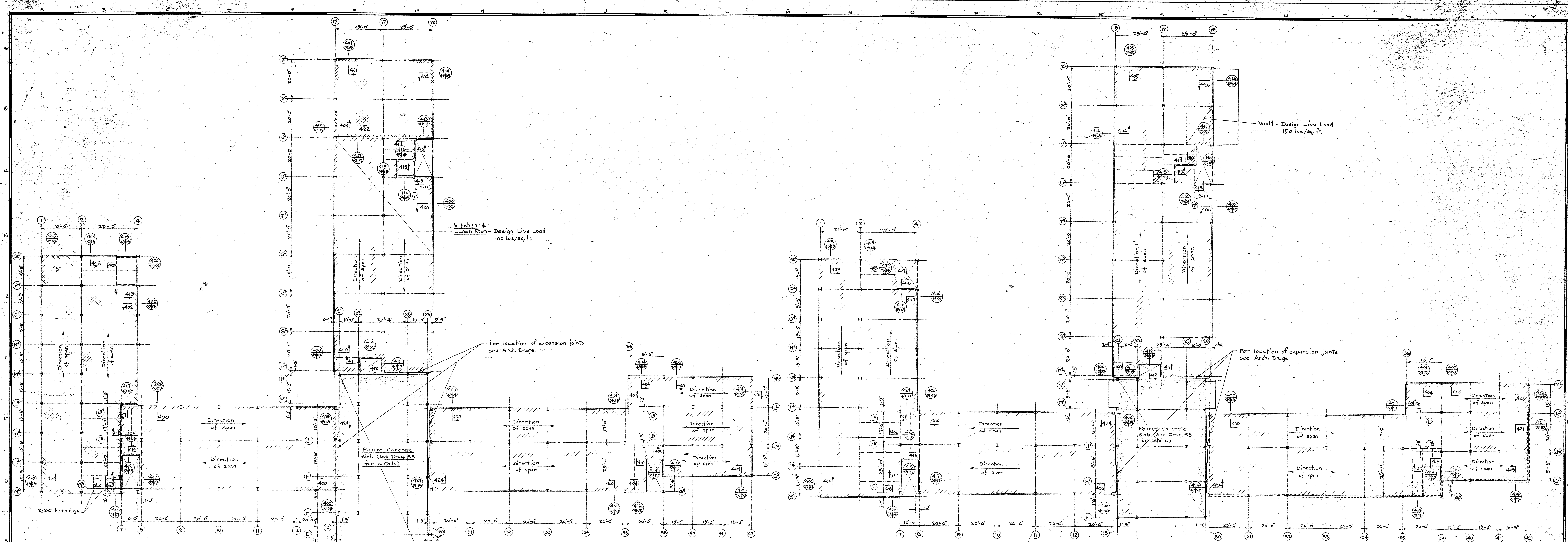


project **M-58 HAZARDOUS MATERIAL ABATEMENT** projet
GROUND FLOOR, SOUTH WING

MONTREAL ROAD CAMPUS

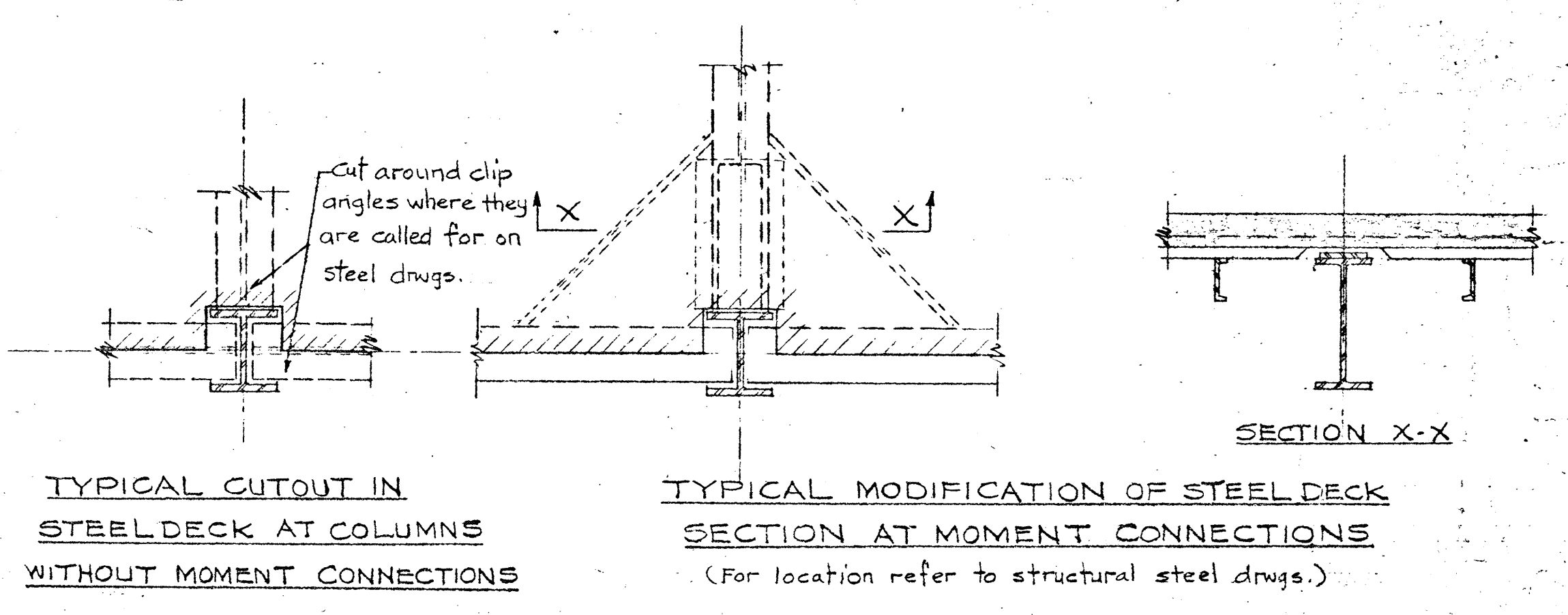
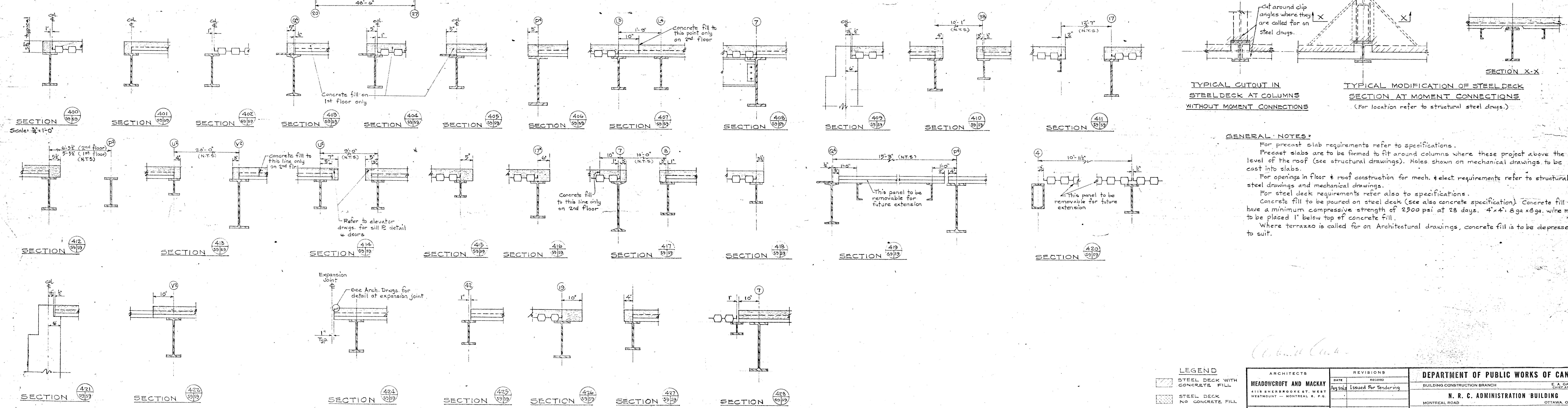
drawing **SCALE PLAN FOR ADDENDUM #1** dessin
 WHEN PRINTED TO SIZE INDICATED AT
 BOTTOM LEFT OF DRAWING

designed	conçu	date	date
		OCT. 6, 2015	
drawn	dessiné	scale	échelle
DIF		1:100	
checked	vérifié	sheet	feuille
		of/de	
approved	approuvé	W.O.no.	D.T.no.
dwg.no.			dessin no.



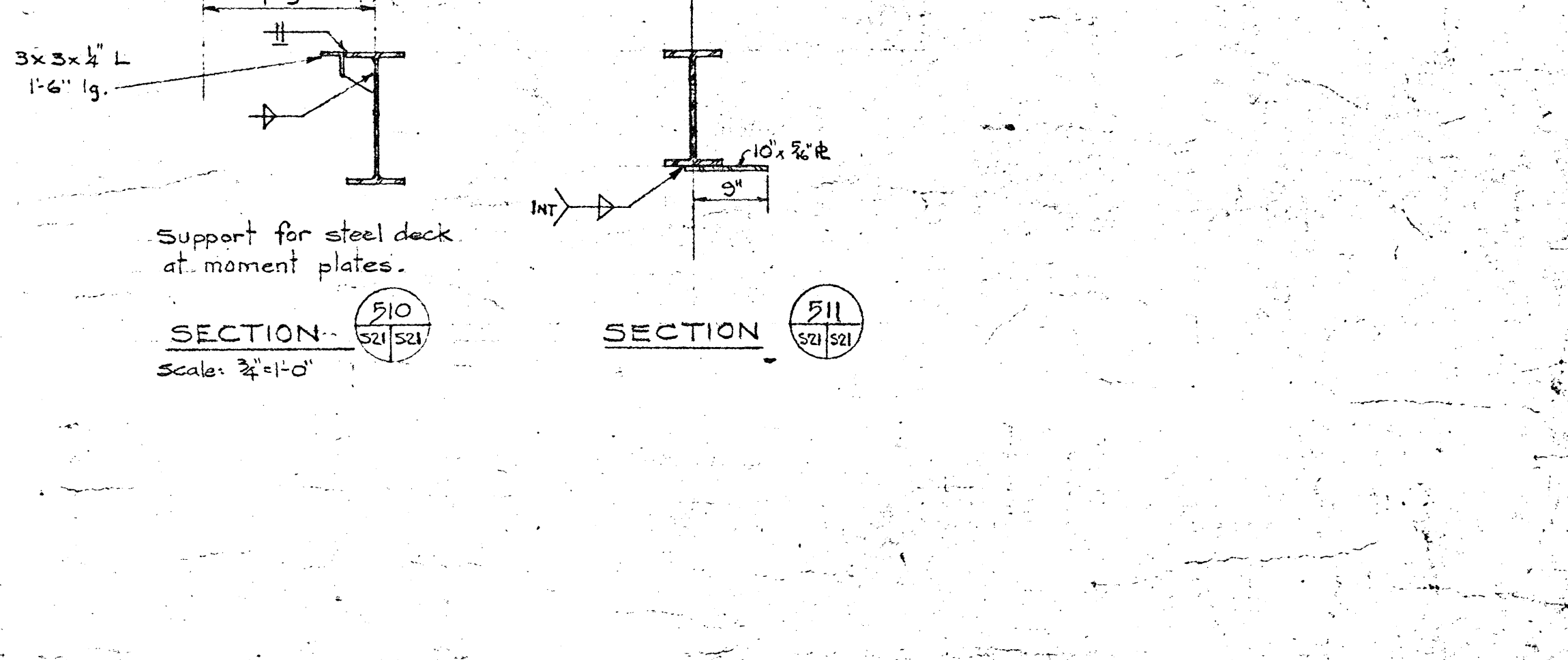
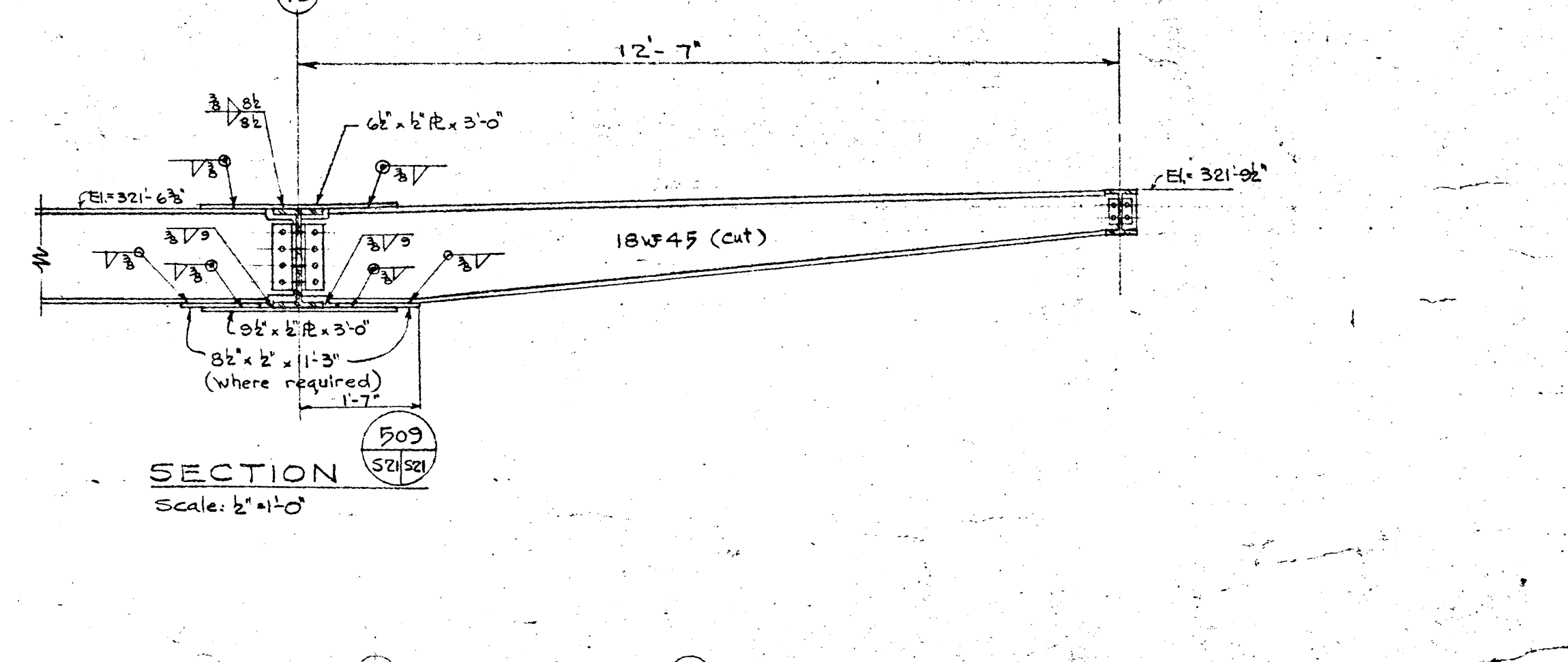
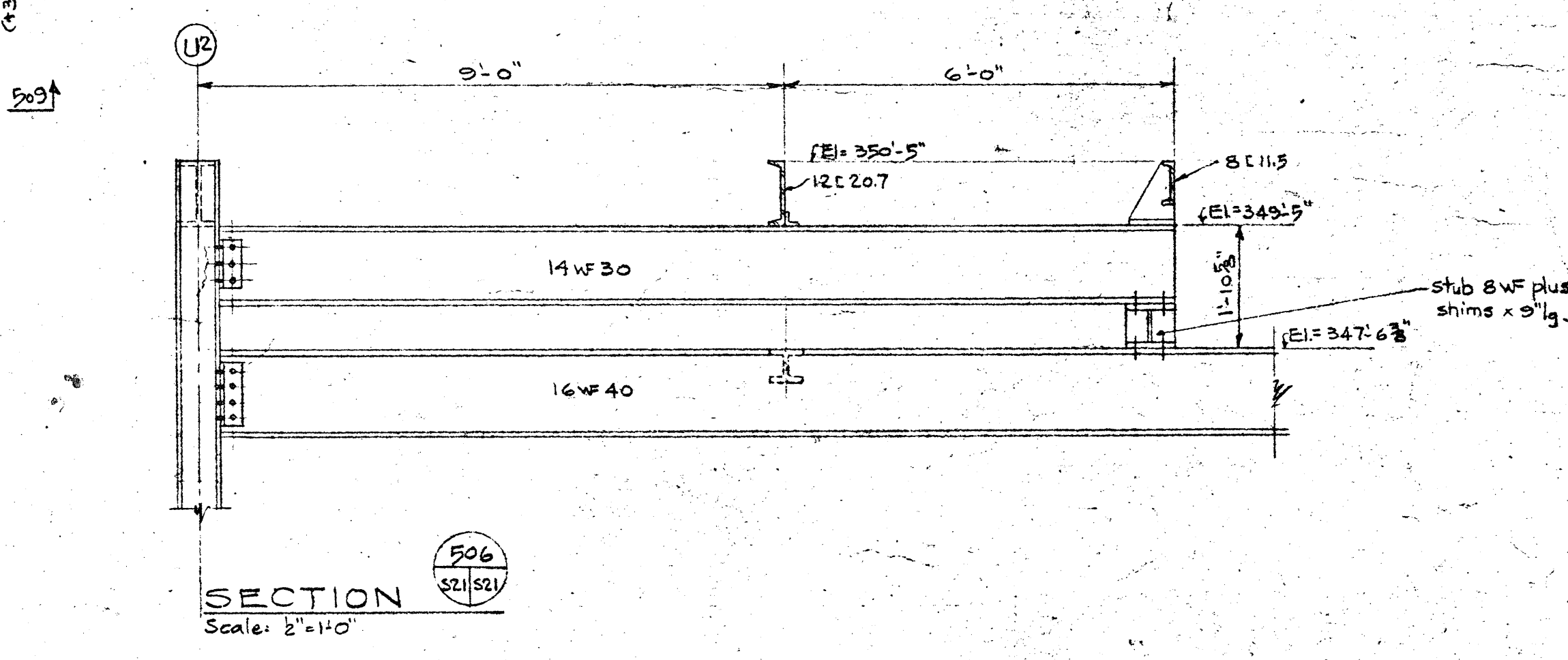
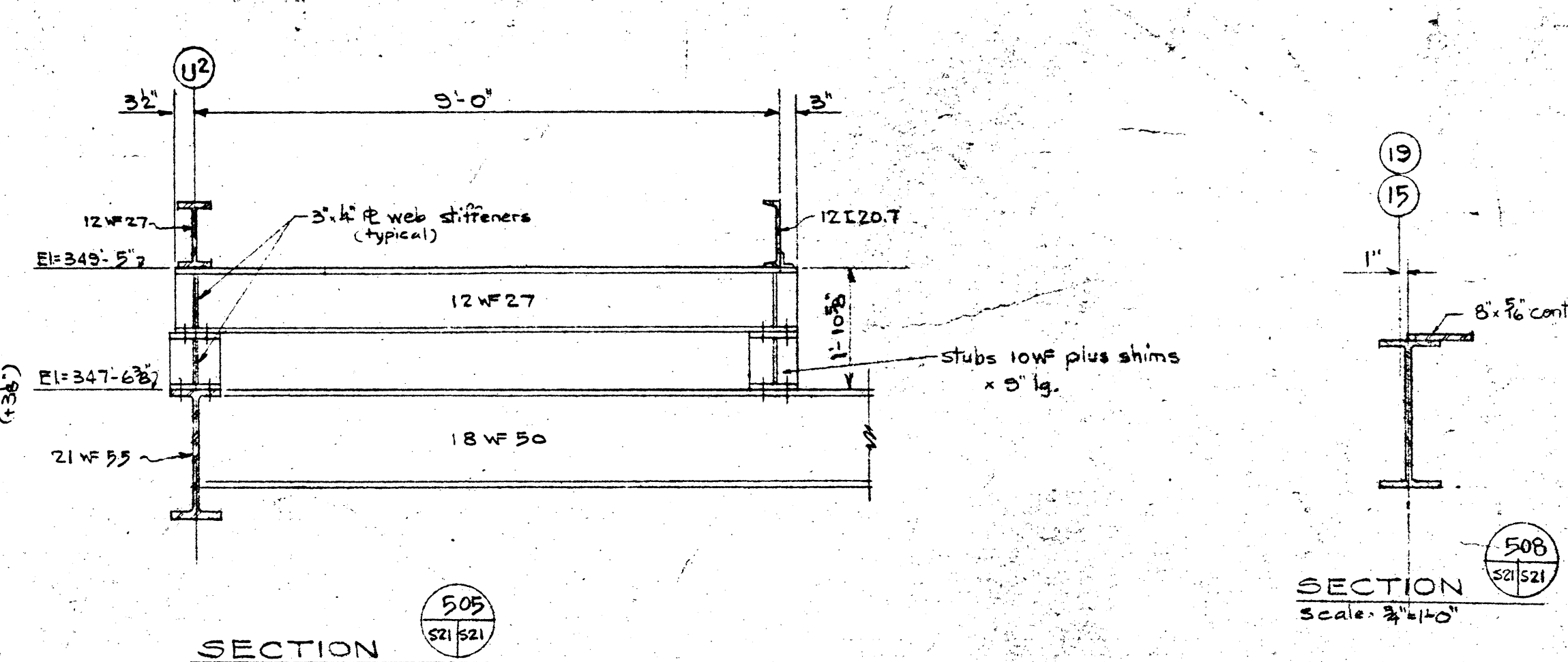
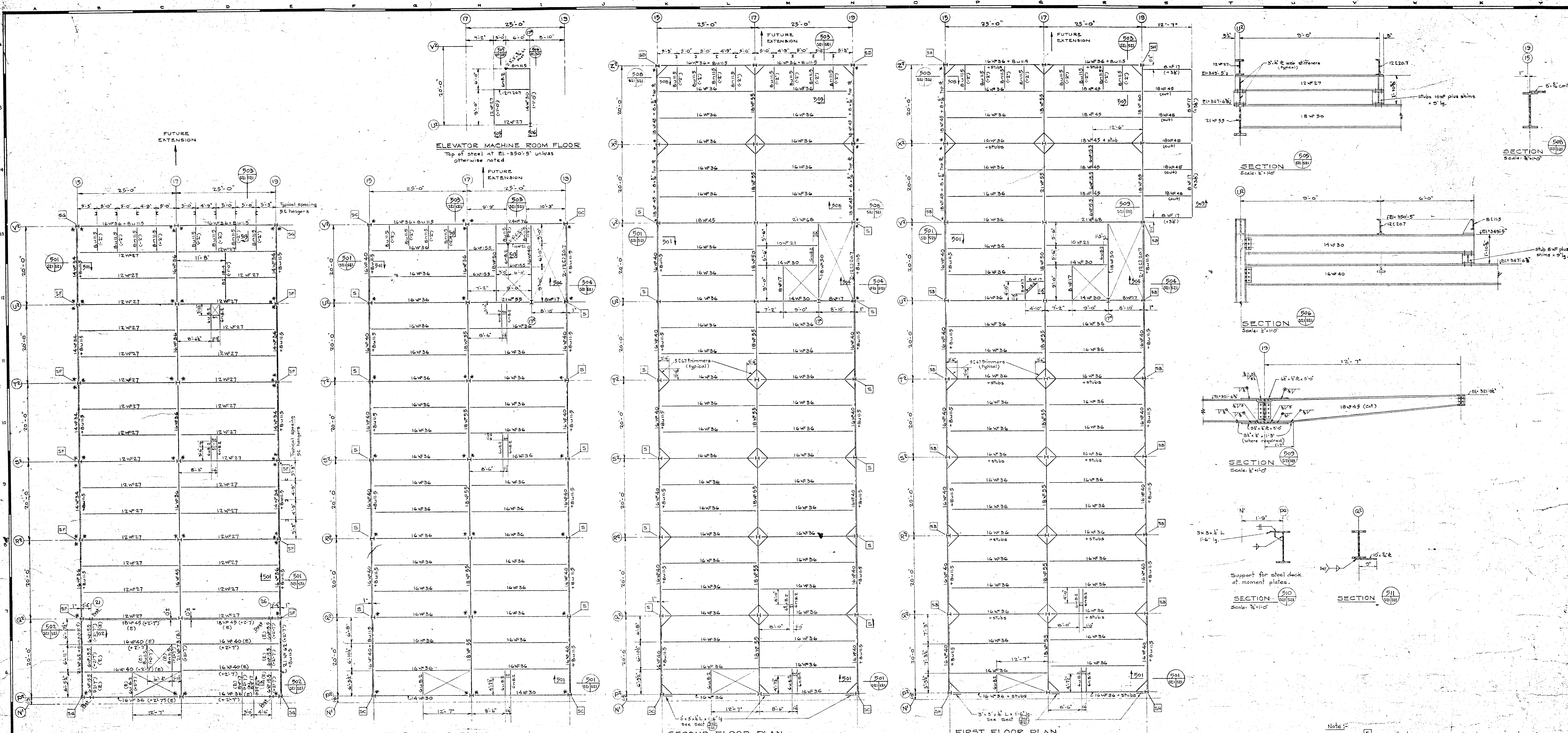
SECOND FLOOR PLAN
Scale: 1/8" = 1'-0"
Design Live Load 80 lbs/sq. ft. (unless noted)

FIRST FLOOR PLAN
Scale: 1/8" = 1'-0"
Design Live Load 50 lbs/sq. ft. (unless noted)



GENERAL NOTES:
 For precast slab requirements refer to specifications.
 Precast slabs are to be formed to fit around columns where these project above the level of the roof (see structural drawings). Holes shown on mechanical drawings to be cast into slabs.
 For openings in floor & roof construction for mech. & elect. requirements refer to structural steel drawings and mechanical drawings.
 For steel deck requirements refer also to specifications.
 Concrete fill to be poured on steel deck (see also concrete specification). Concrete fill to have a minimum compressive strength of 2500 psi at 28 days. 4"x4" @ 9a x 9a wire mesh to be placed 1" below top of concrete fill.
 Where terrazzo is called for on Architectural drawings, concrete fill is to be depressed to suit.

LEGEND		REVISIONS		DEPARTMENT OF PUBLIC WORKS OF CANADA	
[Symbol]	STEEL DECK WITH CONCRETE FILL	DATE	RECORD	BUILDING CONSTRUCTION BRANCH	
[Symbol]	STEEL DECK NO CONCRETE FILL	DATE	ISSUED FOR TENDERING	MONTREAL - MONTREAL & P.S.	
[Symbol]	PRECAST CONCRETE SLABS			N. R. C. ADMINISTRATION BUILDING	
[Symbol]	POURED CONCRETE SLABS			OTTAWA, ONTARIO	
				FLOOR & ROOF CONSTRUCTION - PLANS & DETAILS I	
				DRAWN BY: [Name] CHECKED BY: [Name] SCALE: 1/8" = 1'-0"	
				DATE: [Date] DATE: [Date] PROJECT FILE NO: 748-237	
				S.S.	

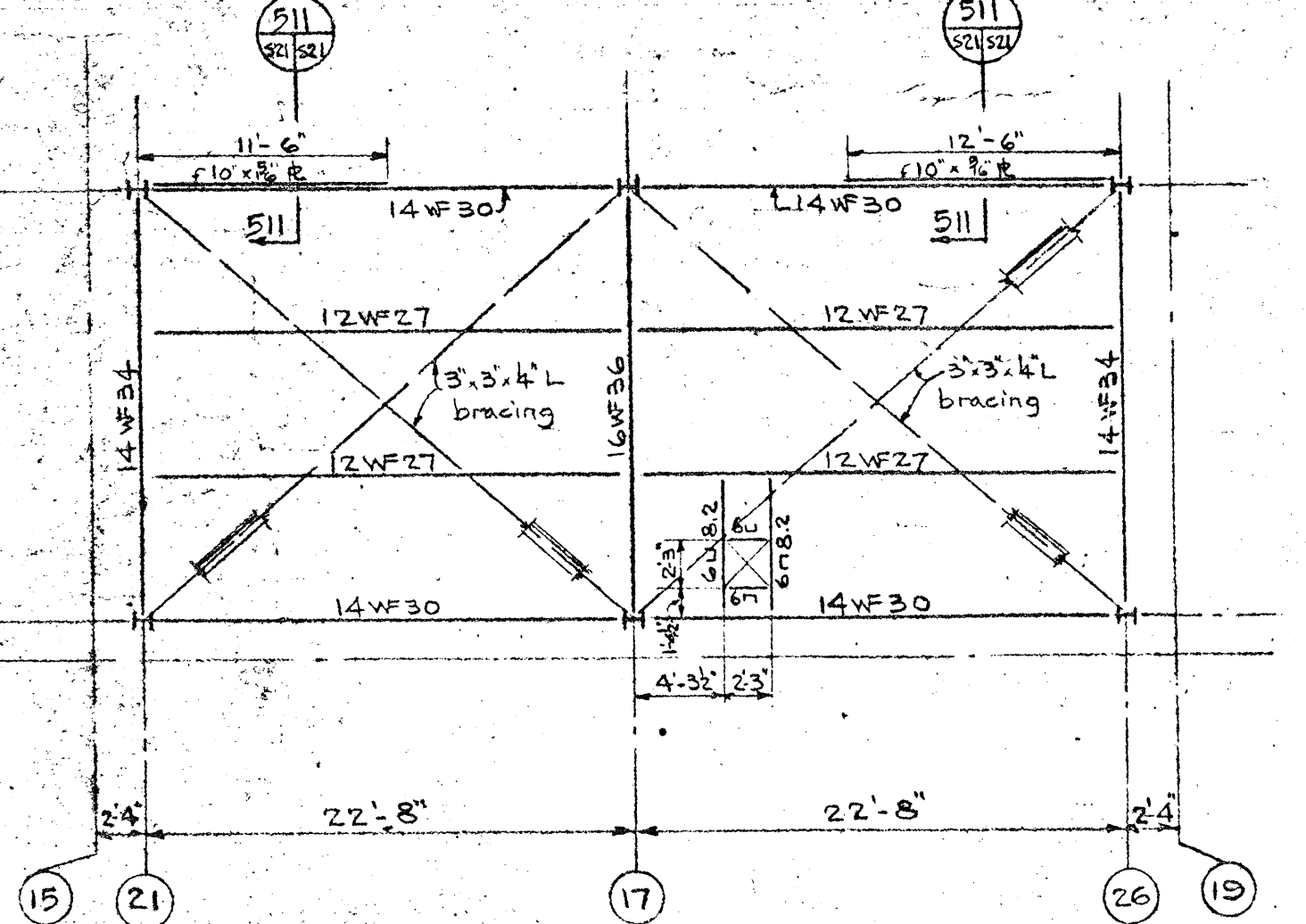


MAIN ROOF & PENTHOUSE FLOOR PLAN
Scale: 1/4"=1'-0"
Top of steel at El. 360'-6" unless otherwise noted.
Note: All beam to column connections marked thus (B) to have 3/8" x 3/4" L bottom flange connections to columns in addition to shear conn.
Beams marked (E) are concrete encased and should not be painted.

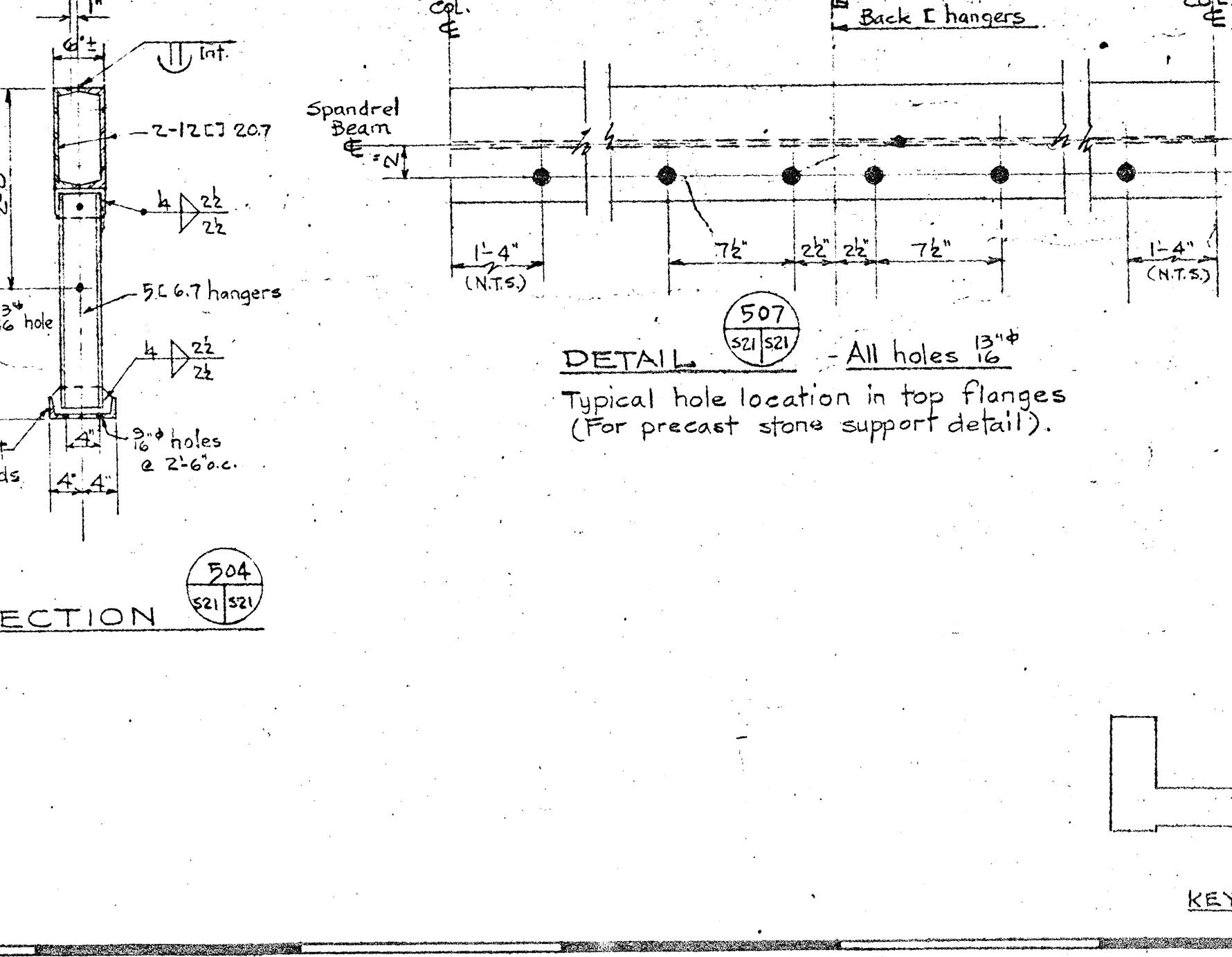
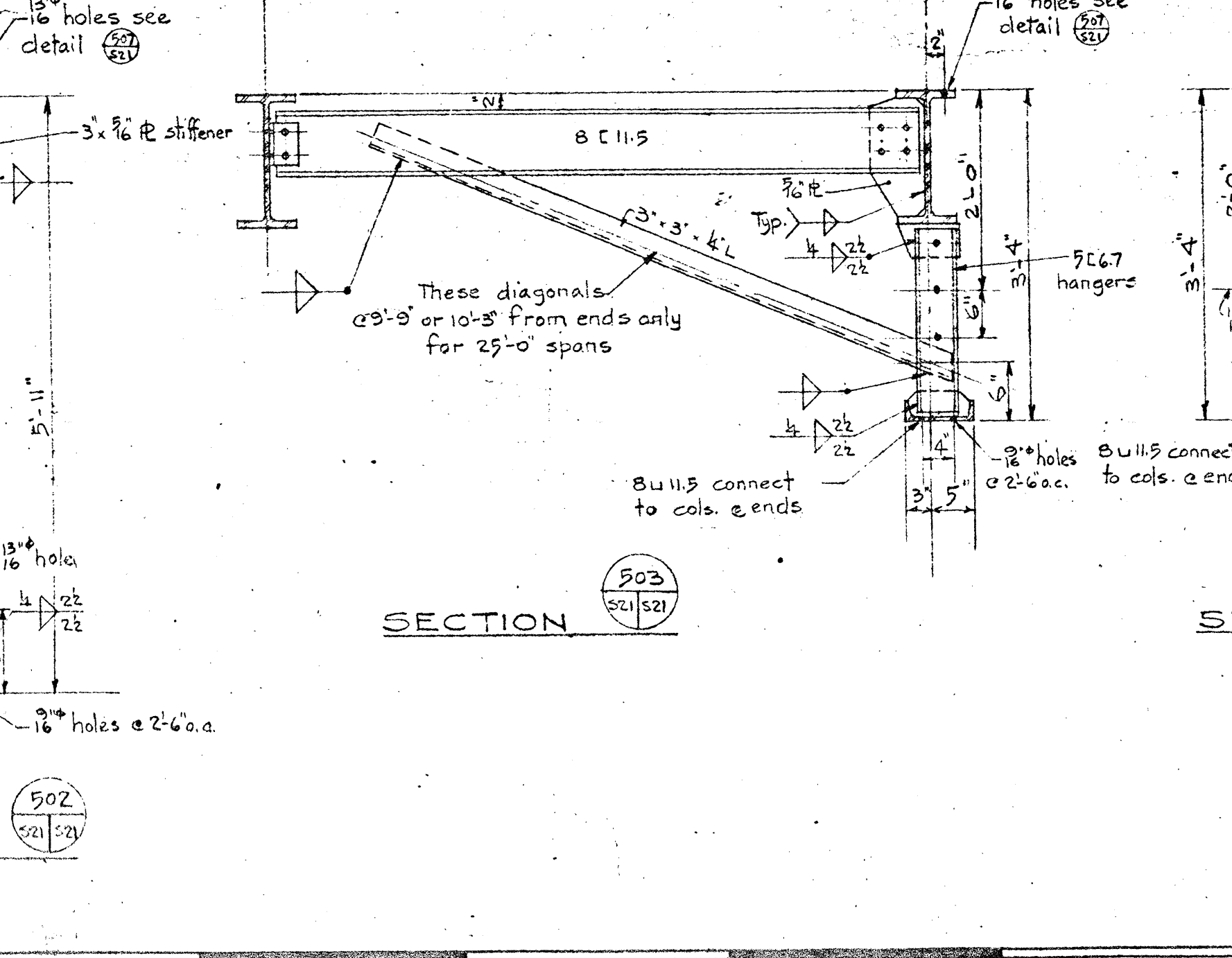
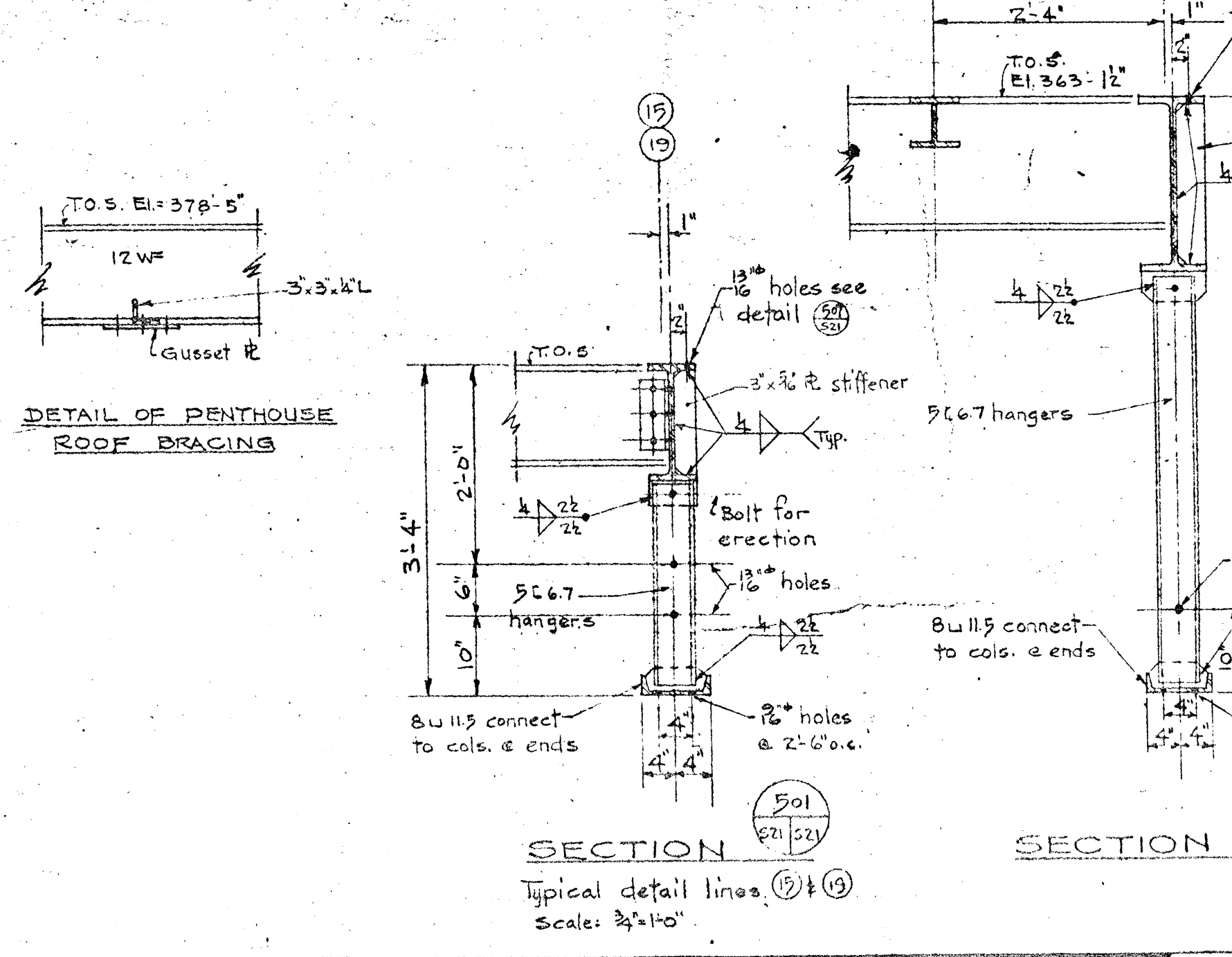
THIRD FLOOR PLAN
Scale: 1/4"=1'-0"
Top of steel at El. 347'-6" unless otherwise noted.
Note: All beam connections marked thus (B) to have 3/8" x 3/4" L top & bottom flange connections to cols. in addition to shear conn.

SECOND FLOOR PLAN
Scale: 1/4"=1'-0"
Top of steel at El. 334'-6" unless otherwise noted.
Note: All beam connections marked thus (B) to have 3/8" x 3/4" L top & bottom flange connections to columns in addition to shear connection.
For details of beam to column moment connections see Dwg. 529.

FIRST FLOOR PLAN
Scale: 1/4"=1'-0"
Top of steel at El. 321'-6" unless otherwise noted.
Note: All beam connections marked thus (B) to have 3/8" x 3/4" L top & bottom flange connections to columns in addition to shear connection.
For details of beam to column moment connections see Dwg. 529.



PENTHOUSE ROOF PLAN
Scale: 1/4"=1'-0"
Top of steel at El. 378'-9" unless otherwise noted.
Note: All beams to have 3/8" x 3/4" L bottom of flange connection to column in addition to shear connection.



Note: (B) etc. indicates columns with stone support angles. For details refer to Dwg. 526.

GENERAL NOTE
All beams in exterior walls to have 3/8" holes @ 2'-6" etc through web at approximate mid-height for masonry anchors.

ARCHITECTS MEADOWCROFT AND MACKAY 4115 SHEPPARD AVE. WEST MONTREAL, P.Q.		REVISIONS		DEPARTMENT OF PUBLIC WORKS OF CANADA BUILDING CONSTRUCTION BRANCH E. A. GARDNER MONTELEONE ST. N. W. OTTAWA, ONTARIO	
CONSULTANTS J. P. KEITH & ASSOCIATES MECHANICAL & ELECTRICAL		DRAWN BY: R.L.		CHECKED BY: J. P. KEITH	
DATE: AUG. 1962		DATE: AUG. 1962		DATE: AUG. 1962	
CA 61-613		614		746-257	

