

GENERAL NOTES

- CONTRACTORS TO CHECK AND VERIFY ALL DIMENSIONS ON SITE PRIOR TO DEMOLITION OR CONSTRUCTION AND REPORT ANY ERRORS OR OMISSIONS TO DEPARTMENTAL REPRESENTATIVE.
- CONTRACTORS MUST VISIT THE SITE & FULLY FAMILIARIZE THEMSELVES WITH THE SCOPE OF THE WORK.
- PREVENT THE SPREAD OF DUST & DEBRIS BEYOND THE WORK AREA AND CLEAN ALL SURFACES AT COMPLETION.
- MAKE GOOD ALL SURFACES AFFECTED BY THIS WORK.
- COORDINATE ALL SHUTDOWNS WITH THE DEPARTMENTAL REPRESENTATIVE.
- PROVIDE ALL LABOUR AND MATERIAL REQUIRED TO FORM A COMPLETE, FUNCTIONAL SYSTEM AS DESCRIBED ON DRAWINGS.
- CONTRACTORS SHALL SUBMIT FOR REVIEW SHOP DRAWINGS BEFORE THE START OF FABRICATION.

GENERAL NOTES

PRIOR TO COMMENCEMENT OF WORK, NOTIFY DEPARTMENTAL REPRESENTATIVE OF ANY DISCREPANCIES NOTED IN THE CONTRACT DOCUMENTS.

A. ALL GRID TO GRID DIMENSIONS ARE PLUS/MINUS. PRIOR TO COMMENCEMENT OF WORK, REVIEW SITE CONDITIONS AND VERIFY ALL DIMENSIONS. NOTIFY DEPARTMENTAL REPRESENTATIVE OF ANY DISCREPANCIES.

B. DO NOT SCALE DRAWINGS.

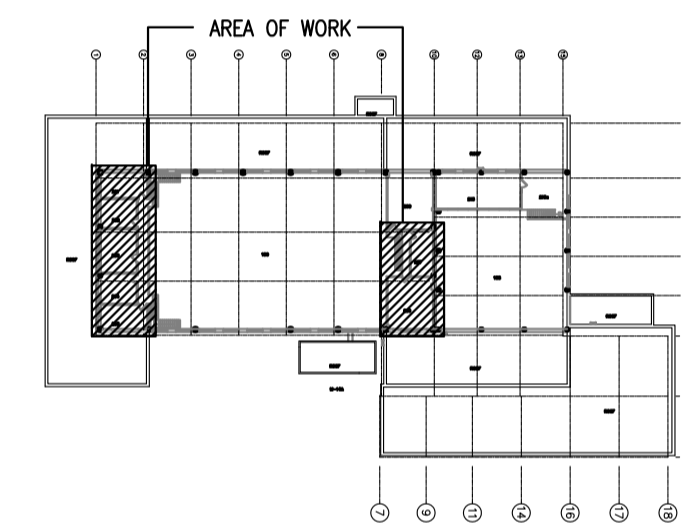
C. ALL DIMENSIONS ARE INDICATED IN MILLIMETERS UNLESS OTHERWISE SPECIFIED.

DRAWING NOTES – SHEET A01

THESE NOTES APPLY TO DRAWING SHEET A01 ONLY

- EXISTING SUSPENDED CEILING SYSTEM TO BE REMOVED. REMOVE TILES, SUSPENSION SYSTEM AND ALL ASSOCIATED ELEMENTS INCLUDING TIES AND J-TRIM.
- DENOTES EXISTING LOUVRES TO REMAIN. REFER TO MECHANICAL DRAWINGS.

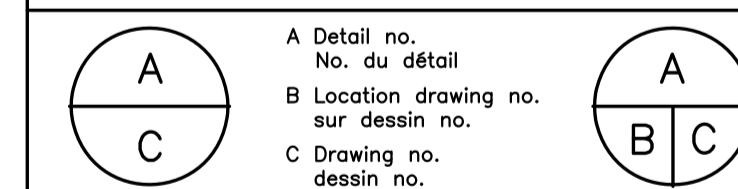
KEY PLAN



No.	Date	Revision	By: / Par:
0	JULY 2015	ISSUED FOR TENDER	CE

Date Printed: _____ Date imprimée: _____

- Verify all dimensions and site conditions and be responsible for same
- Vérifier toutes les dimensions et l'état des lieux et en assumer la responsabilité



project: _____ projet: _____

**BUILDING M-14
 MEZZANINE OFFICE HVAC RETROFIT**

MONTREAL ROAD CAMPUS

drawing: _____ dessin: _____
**PARTIAL REFLECTED CEILING DEMOLITION PLANS,
 WEST AND EAST MEZZANINES**

designed: CE conçu: _____ date: **JULY 2015** date: _____

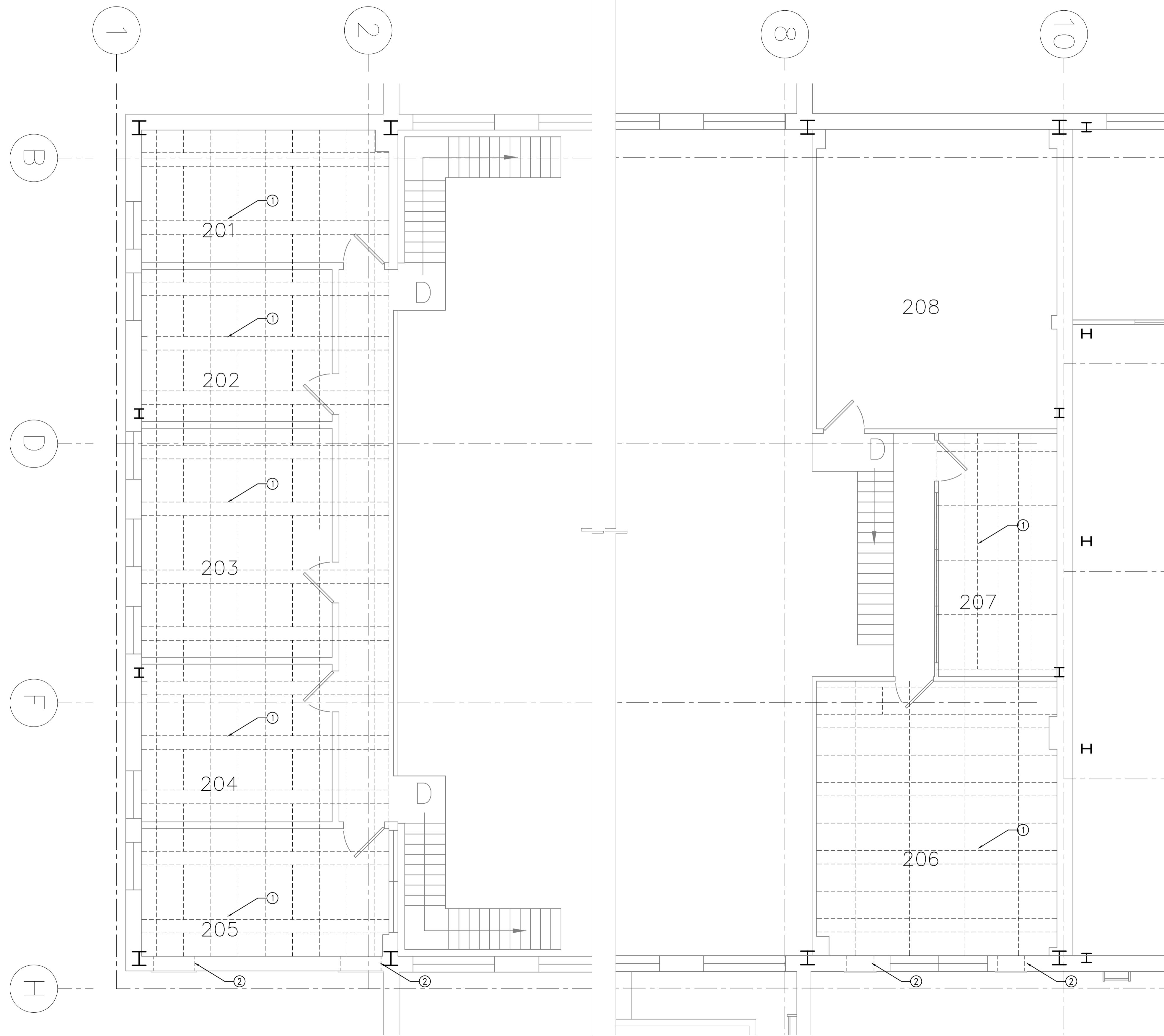
drawn: CE dessiné: _____ scale: **AS NOTED** échelle: _____

checked: SWH vérifié: _____ sheet: **1** of/de **2** feuille: _____

approved: BV. approuvé: _____ W.O.no.: _____ D.T.no.: _____

dwg.no.: _____ dessin no.: _____

5003-A01



1
A01
 PARTIAL REFLECTED CEILING DEMOLITION PLAN – WEST MEZZANINE
 SCALE = 1:50

2
A01
 PARTIAL REFLECTED CEILING DEMOLITION PLAN – EAST MEZZANINE
 SCALE = 1:50

GENERAL NOTES

- CONTRACTORS TO CHECK AND VERIFY ALL DIMENSIONS ON SITE PRIOR TO DEMOLITION OR CONSTRUCTION AND REPORT ANY ERRORS OR OMISSIONS TO DEPARTMENTAL REPRESENTATIVE.
- CONTRACTORS MUST VISIT THE SITE & FULLY FAMILIARIZE THEMSELVES WITH THE SCOPE OF THE WORK.
- PREVENT THE SPREAD OF DUST & DEBRIS BEYOND THE WORK AREA AND CLEAN ALL SURFACES AT COMPLETION.
- MAKE GOOD ALL SURFACES AFFECTED BY THIS WORK.
- COORDINATE ALL SHUTDOWNS WITH THE DEPARTMENTAL REPRESENTATIVE.
- PROVIDE ALL LABOUR AND MATERIAL REQUIRED TO FORM A COMPLETE, FUNCTIONAL SYSTEM AS DESCRIBED ON DRAWINGS.
- CONTRACTORS SHALL SUBMIT FOR REVIEW SHOP DRAWINGS BEFORE THE START OF FABRICATION.

GENERAL NOTES

PRIOR TO COMMENCEMENT OF WORK, NOTIFY DEPARTMENTAL REPRESENTATIVE OF ANY DISCREPANCIES NOTED IN THE CONTRACT DOCUMENTS.

- A. ALL GRID TO GRID DIMENSIONS ARE PLUS/MINUS. PRIOR TO COMMENCEMENT OF WORK, REVIEW SITE CONDITIONS AND VERIFY ALL DIMENSIONS. NOTIFY DEPARTMENTAL REPRESENTATIVE OF ANY DISCREPANCIES.
- B. DO NOT SCALE DRAWINGS.
- C. ALL DIMENSIONS ARE INDICATED IN MILLIMETERS UNLESS OTHERWISE SPECIFIED.

DRAWING NOTES - SHEET A02

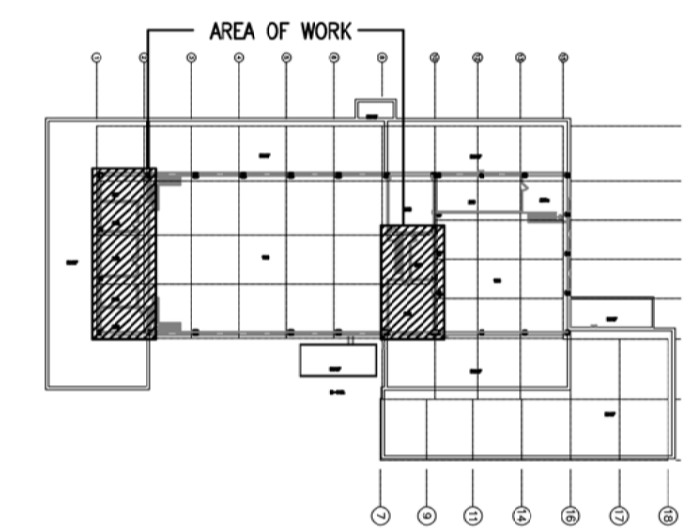
THESE NOTES APPLY TO DRAWING SHEET A02 ONLY

- NEW SUSPENDED CEILING SYSTEM IN ROOMS 201, 202, 203, 204, 205, 206 AND 207, HEIGHT 2965mm:
 - TILES: ARMSTRONG, CORTEGA SQUARE LAY-IN TILES, 3mm GRID FACE, ITEM NUMBER 769, DIMENSIONS: 610mm X 1219mm X 16mm, COLOUR: WHITE.
 - SUSPENSION: ARMSTRONG "PRELUDE" 3mm EXPOSED TEE SYSTEM, COLOUR: WHITE.
 - INSTALL NEW TIES AS REQUIRED.
 - SEE MECHANICAL AND ELECTRICAL DRAWINGS FOR ITEM NOTES.
 - COORDINATE WITH MECHANICAL AND ELECTRICAL CONTRACTORS

NOTE: PROVIDE NRC DEPARTMENTAL REPRESENTATIVE WITH ONE EXTRA PACKAGE OF CEILING TILES IN ORIGINAL PACKAGING FOR MAINTENANCE.

- EXISTING LOUVRE TO REMAIN.
- NEW INFILL FOR LOUVRE. REFER TO DETAIL 3/A02.
- 3mm GALVANIZED STEEL PLATE SCREWED TO EXISTING LOUVRE FLANGE. CAULK AT ALL EDGES.
- POLYISO VAPOR BARRIER.
- 38mm EXPANDED POLYSTYRENE FIXED TO 64mm STEEL STUDS. STUDS SCREWED TO EXISTING LOUVRE FLANGE. CAULK AT ALL CONNECTIONS, TYP.
- ROXUL INSULATION.
- 16mm GYPSUM BOARD FIXED TO 64mm STEEL STUDS, MUD AND SAND ONLY. CAULK AT ALL CONNECTIONS, TYP.
- NEW SUSPENDED CEILING SYSTEM.
- EXISTING EXTERIOR WALL.

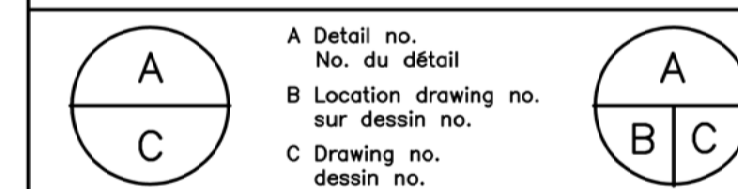
KEY PLAN



No.	Date	Revision	By: Par:
0	JULY 2015	ISSUED FOR TENDER	CE

Date Printed: _____ Date imprimée: _____

- Verify all dimensions and site conditions and be responsible for same
- Vérifier toutes les dimensions et l'état des lieux et en assumer la responsabilité



project: _____ projet: _____

**BUILDING M-14
MEZZANINE OFFICE HVAC RETROFIT**

MONTREAL ROAD CAMPUS

drawing: PARTIAL REFLECTED CEILING PLANS NEW WORK WEST AND EAST MEZZANINES, DETAILS dessin

designed: CE conçu date: JULY 2015 date

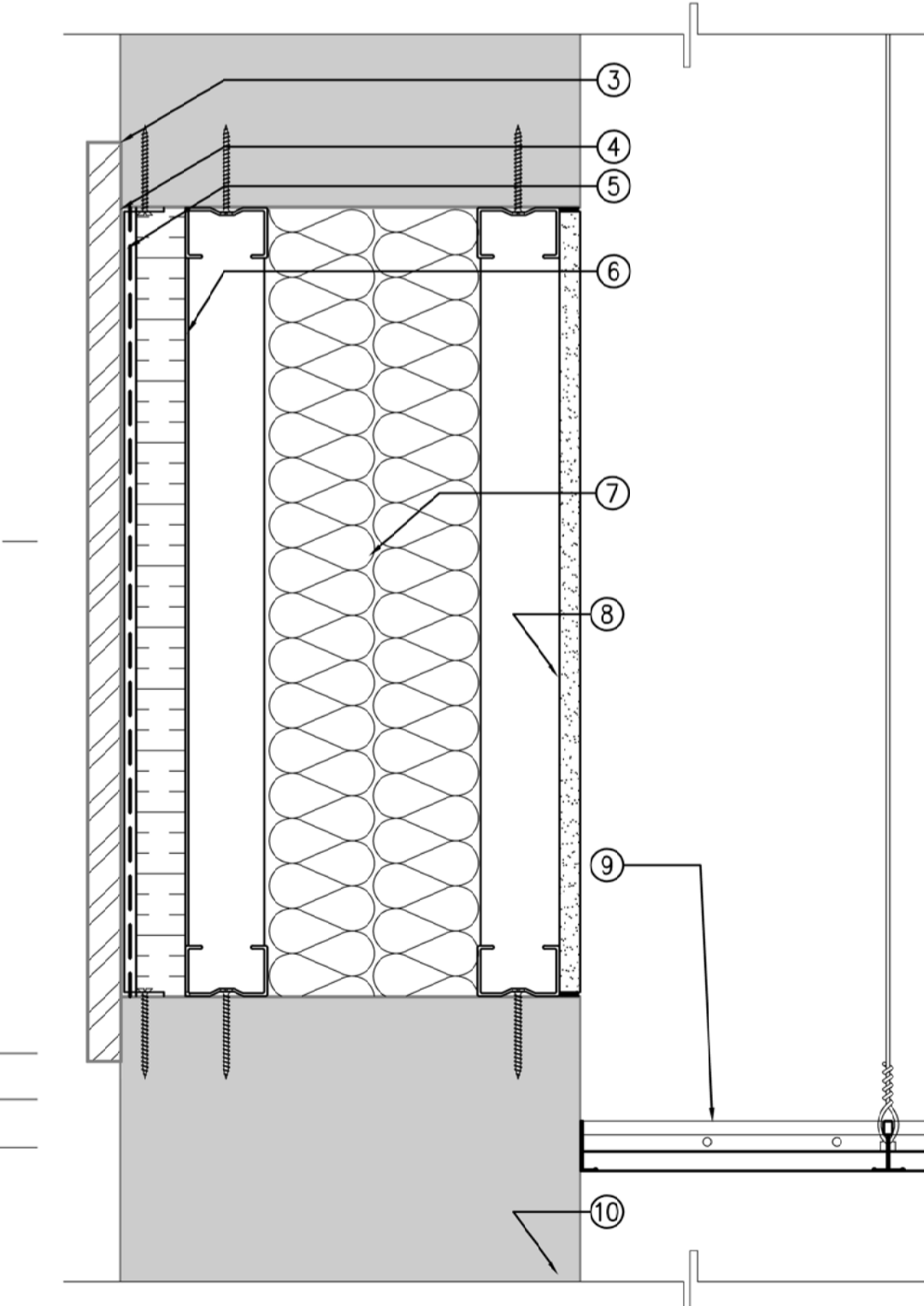
drawn: CE dessiné scale: AS NOTED échelle

checked: SWH vérifié sheet: 2 of/de 2 feuille

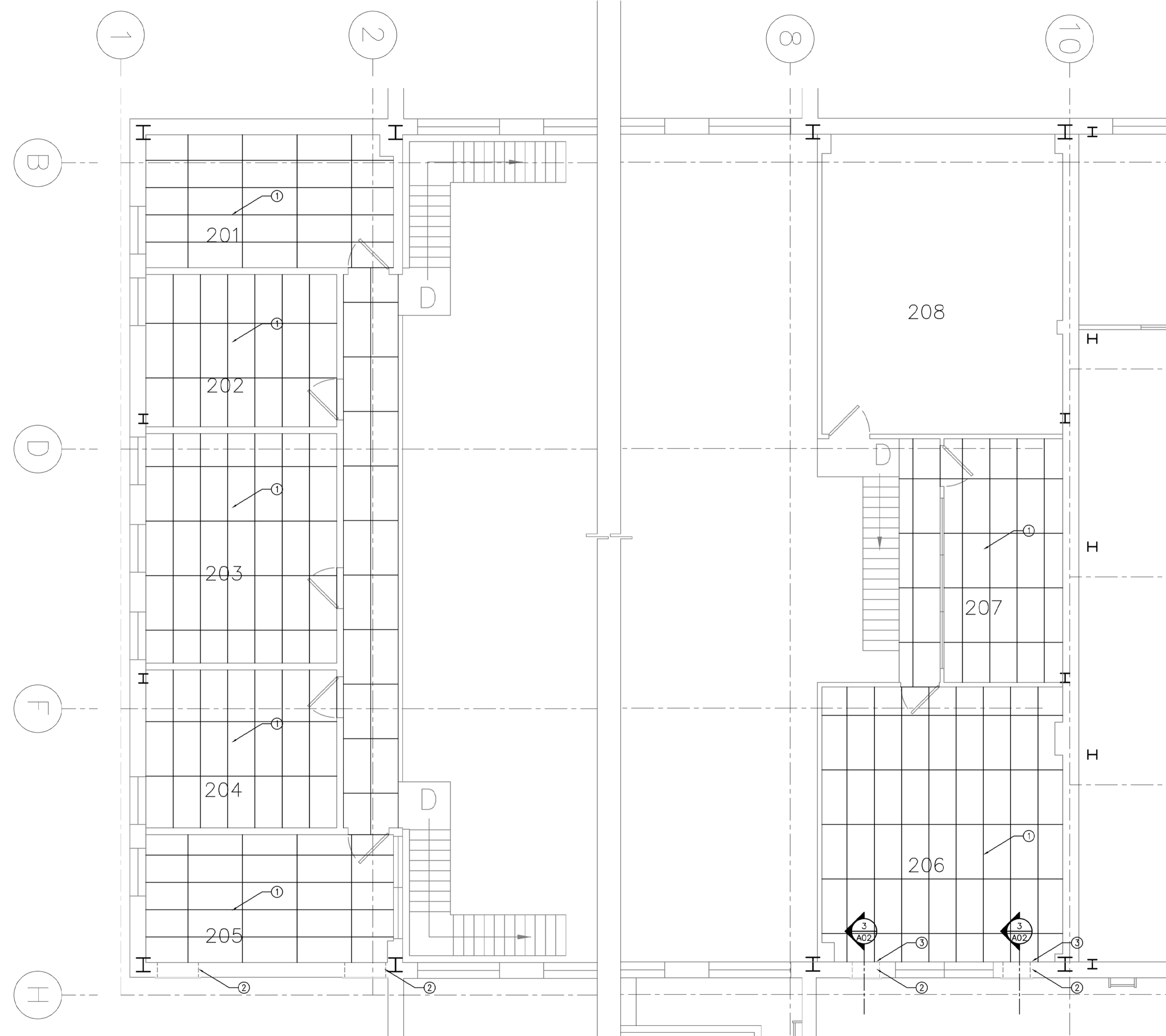
approved: BV. approuvé W.O.no. D.T.no.

dwg.no. dessin no.

5003-A02



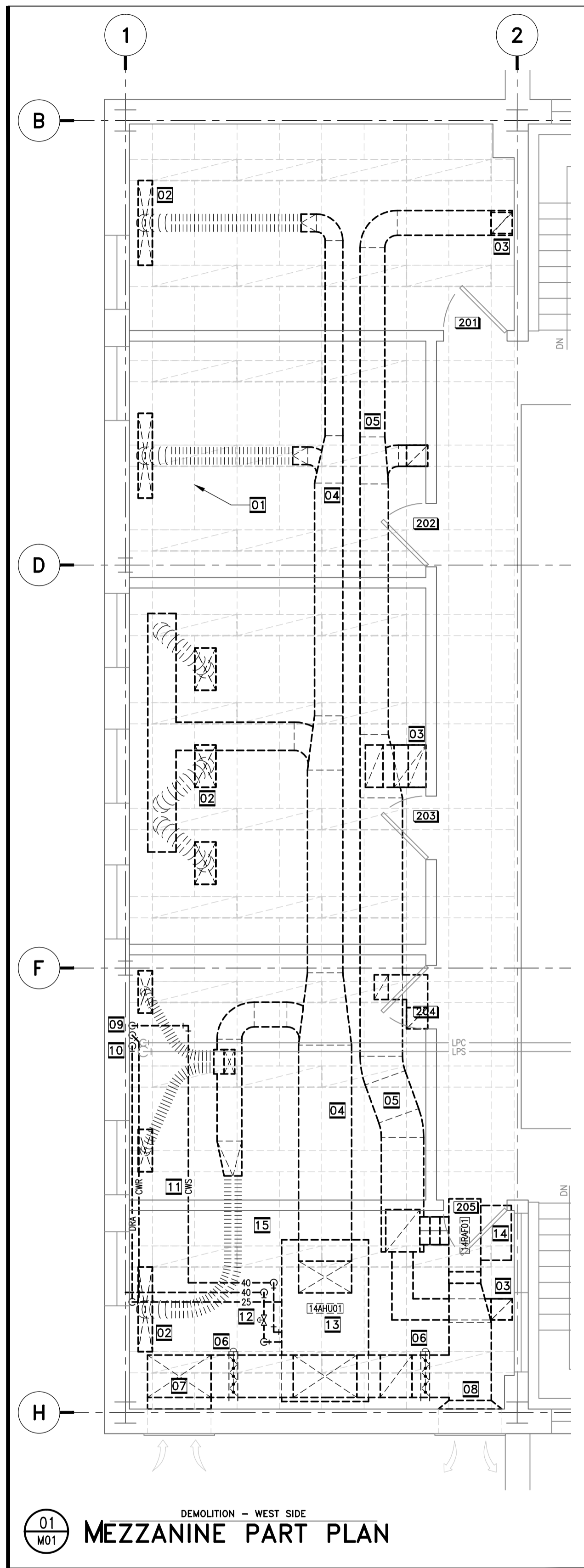
3 A02 DETAIL @ LOUVRE INFILL
SCALE = 1:5



1 A02 PARTIAL REFLECTED CEILING PLAN NEW WORK - WEST MEZZANINE
SCALE = 1:50

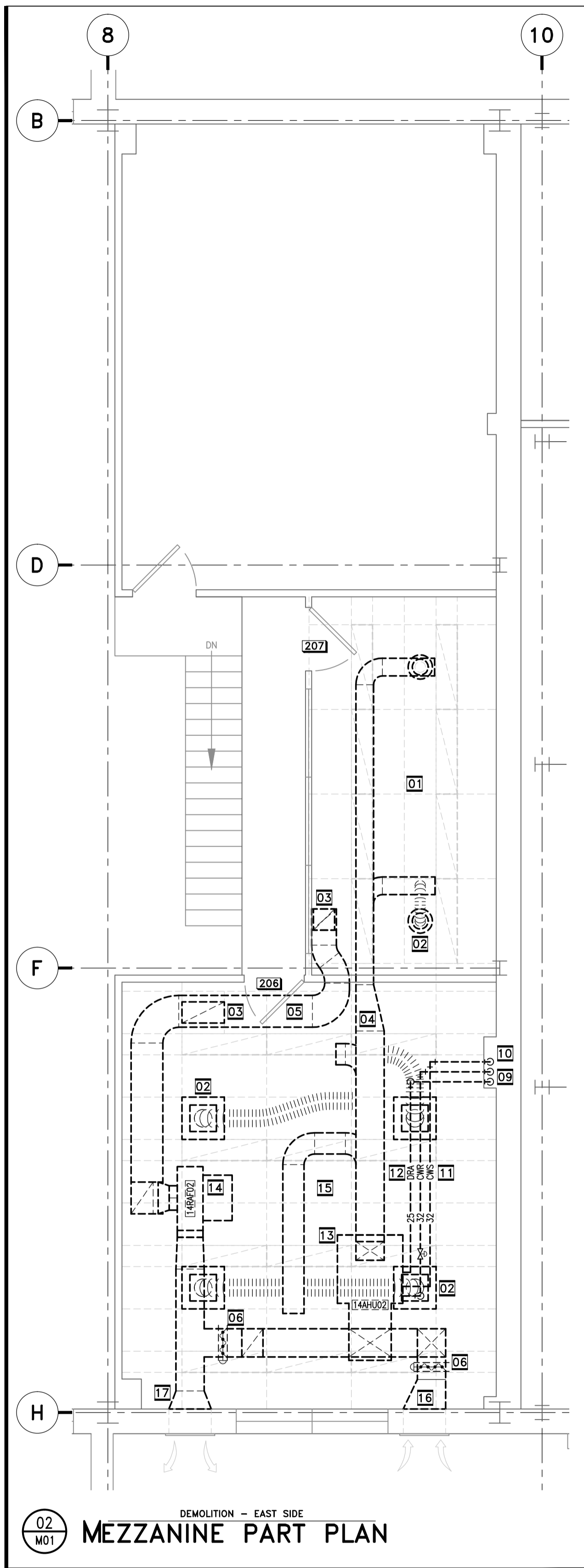
2 A02 PARTIAL REFLECTED CEILING PLAN NEW WORK - EAST MEZZANINE
SCALE = 1:50



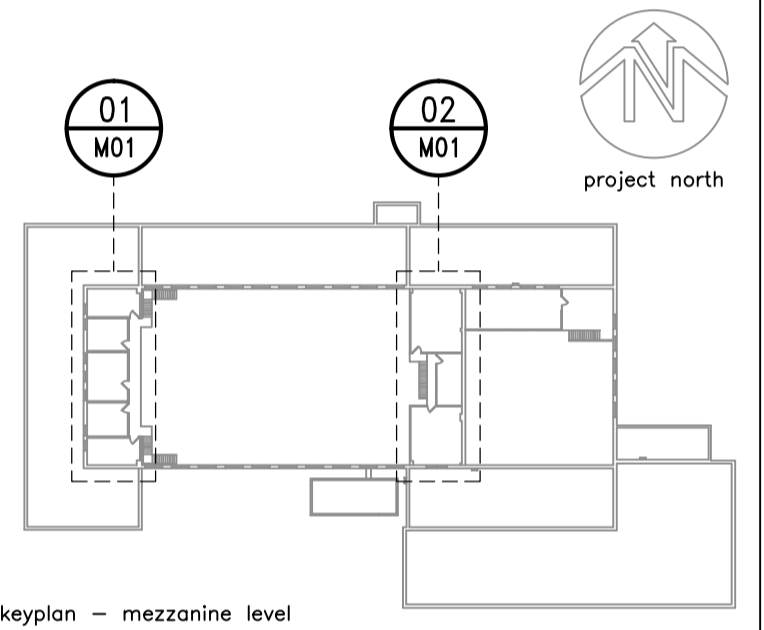


- 00 DEMOLITION NOTES**
- 01 GENERAL - EXISTING SUSPENDED CEILINGS WILL BE DEMOLISHED BY GENERAL TRADES.
 - 02 TYPICAL - REMOVE ALL SUPPLY AIR DIFFUSERS AND/OR GRILLES AND ANY ASSOCIATED FLEXIBLE DUCTING.
 - 03 TYPICAL - REMOVE ALL RETURN AIR GRILLES.
 - 04 TYPICAL - REMOVE ALL SUPPLY AIR DUCTING AND ASSOCIATED INSULATION.
 - 05 TYPICAL - REMOVE ALL RETURN AIR DUCTING.
 - 06 ALL EXISTING CONTROL CONNECTIONS TO MOTORIZED DAMPERS, VALVES AND SIMILAR CONTROL DEVICES SHALL BE REMOVED BY APPROVED CONTROLS CONTRACTOR.
 - 07 REMOVE DUCTING AND INSULATION FROM OUTDOOR AIR LOUVRE. PROVIDE TEMPORARY BLANKING OVER LOUVRE AS APPROPRIATE.
 - 08 REMOVE DUCTING AND INSULATION FROM EXHAUST AIR LOUVRE. PROVIDE TEMPORARY BLANKING OVER LOUVRE AS APPROPRIATE.
 - 09 EXISTING CHILLED WATER S&R PIPE RISERS WILL BE REUSED.
 - 10 EXISTING DRAIN RISERS WILL BE REUSED.
 - 11 REMOVE EXISTING CHILLED WATER DISTRIBUTION PIPING CONNECTING TO AIR HANDLING UNIT.
 - 12 REMOVE EXISTING DRAIN PIPING CONNECTING TO AIR HANDLING UNIT.
 - 13 AFTER ELECTRICAL DISCONNECTION BY ELECTRICAL CONTRACTOR, DISMANTLE AND REMOVE AIR HANDLING UNIT. REMOVE ALL ASSOCIATED ITEMS INCLUDING COIL WINTERIZING FLEXIBLE DUCTS.
 - 14 AFTER ELECTRICAL DISCONNECTION BY ELECTRICAL CONTRACTOR, REMOVE EXHAUST AIR FAN.
 - 15 AFTER EXISTING MECHANICAL EQUIPMENT HAS BEEN REMOVED FROM STEEL PLATFORM, DISMANTLE AND REMOVE PLATFORM.
 - 16 REMOVE DUCTING AND INSULATION FROM OUTDOOR AIR LOUVRE. PROVIDE INSULATED PERMANENT BLANKING OVER LOUVRE.
 - 17 REMOVE DUCTING AND INSULATION FROM EXHAUST AIR LOUVRE. PROVIDE INSULATED PERMANENT BLANKING OVER LOUVRE.

01 M01 DEMOLITION - WEST SIDE
MEZZANINE PART PLAN



02 M01 DEMOLITION - EAST SIDE
MEZZANINE PART PLAN

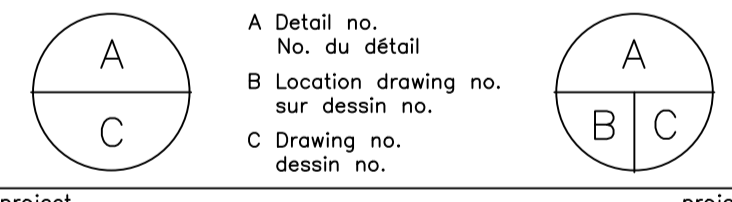


keyplan - mezzanine level

No.	Date	Revision	By:
00	2015.08.24	ISSUED FOR TENDER	WF

Date Printed: _____ Date imprimée: _____

- o Verify all dimensions and site conditions and be responsible for same
- o Vérifier toutes les dimensions et l'état des lieux et en assumer la responsabilité

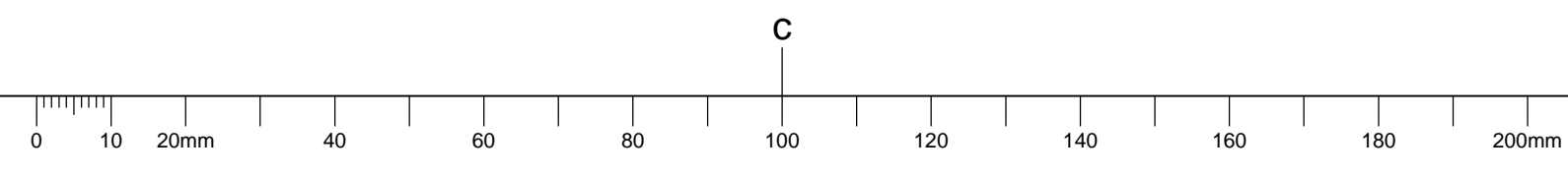


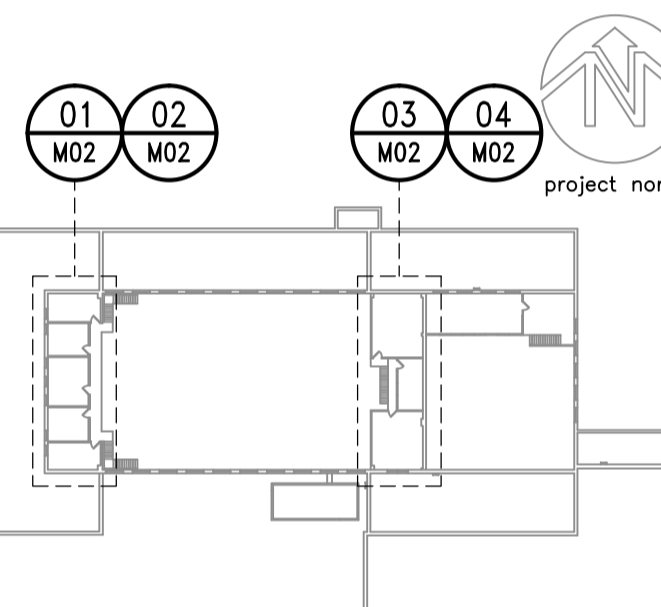
project: **Building M-14 Mezzanine Office HVAC Retrofit**

project: **Montreal Road Campus**

drawing: **MECHANICAL DEMOLITION Existing Office HVAC Systems**

designed	conçu	date	date
Rodders CAS		August 2015	
drawn	dessiné	scale	échelle
Rodders CAS		1:50 UNO	
checked	vérifié	sheet	feuille
LAF.		M01 of/de 03	
approved	approuvé	W.O.no.	D.T.no.
BV.			
dwg.no.			dessin no.
5003-M01			



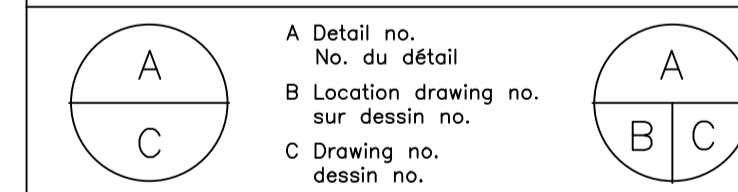


keyplan - mezzanine level

No.	Date	Revision	By:
00	2015.08.24	ISSUED FOR TENDER	IAF

Date Printed: _____ Date imprimée: _____

- o Verify all dimensions and site conditions and be responsible for same
- o Vérifier toutes les dimensions et l'état des lieux et en assumer la responsabilité



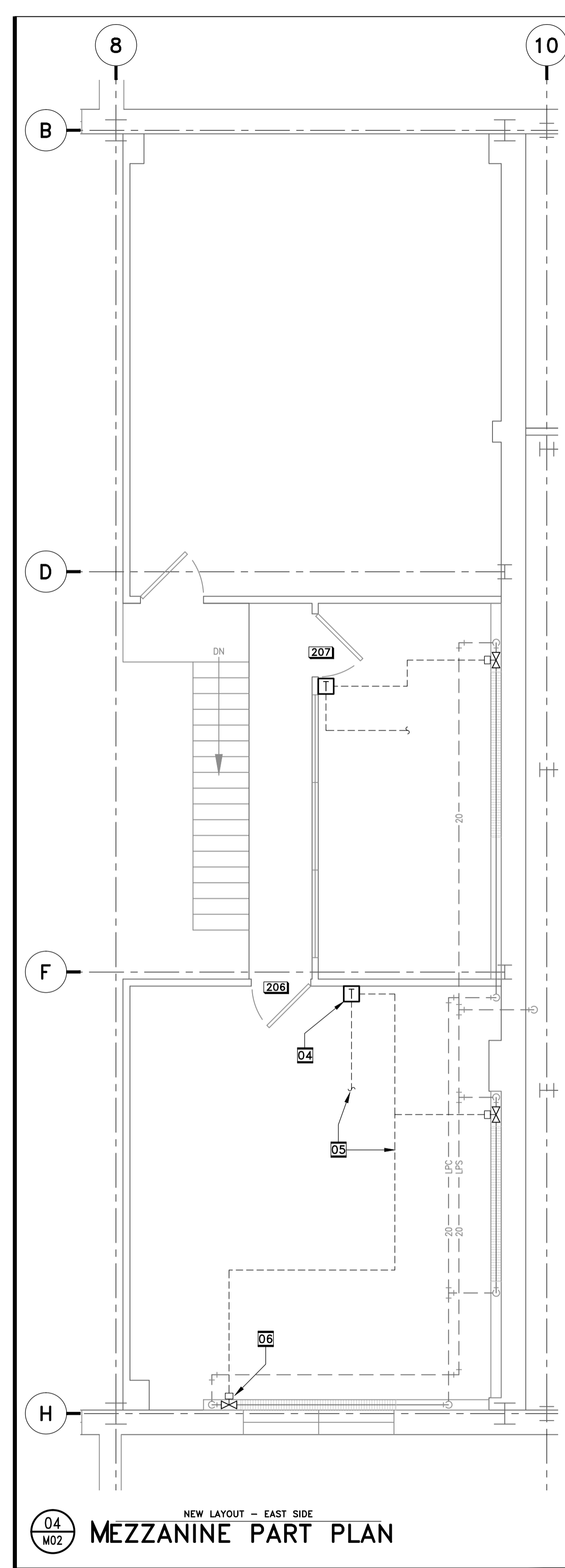
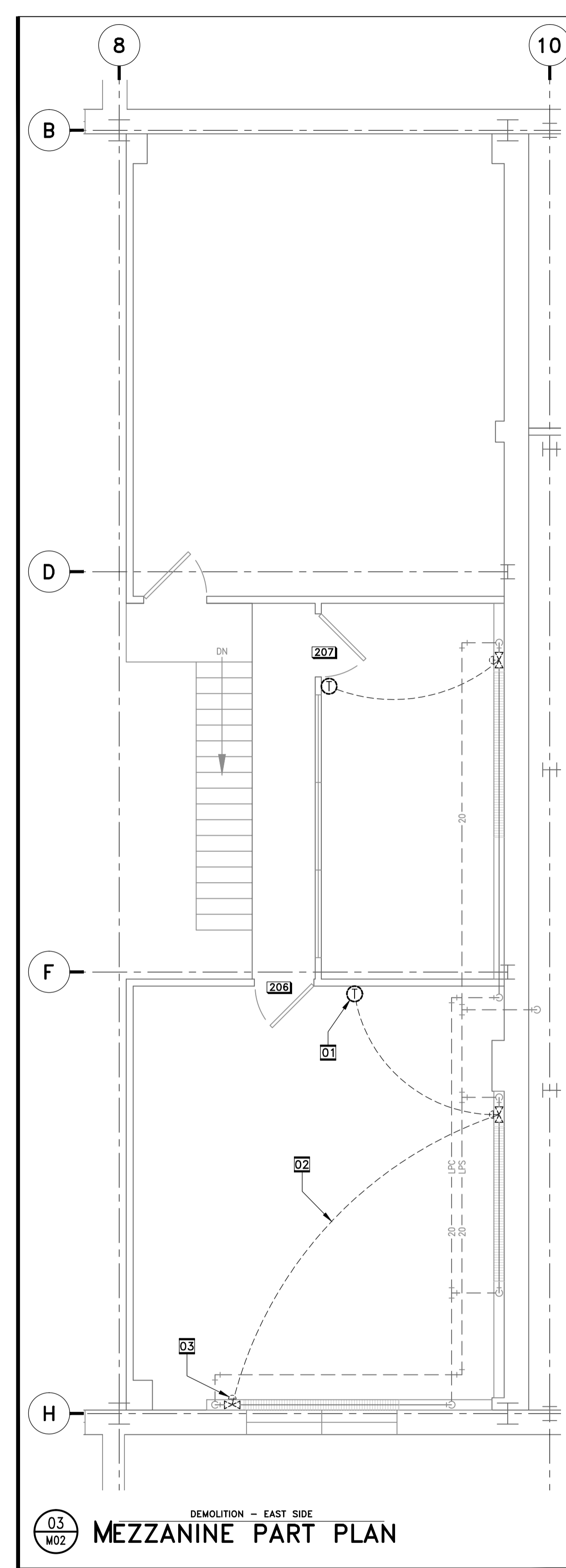
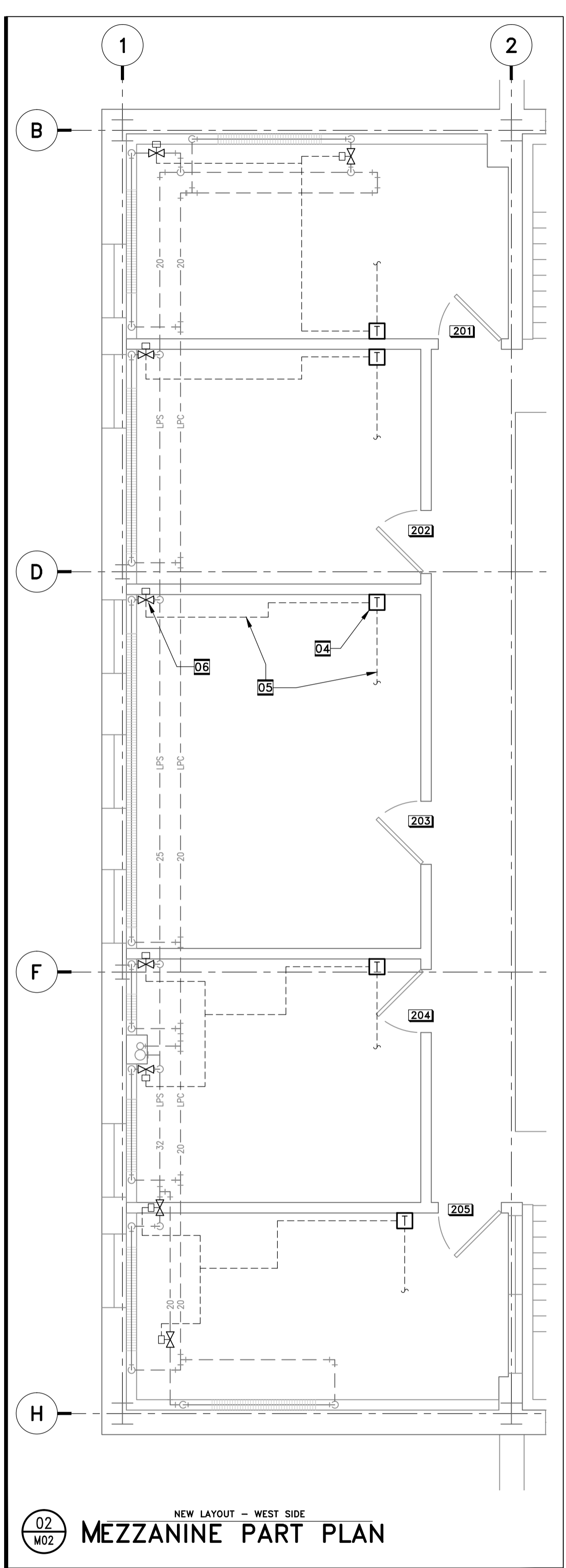
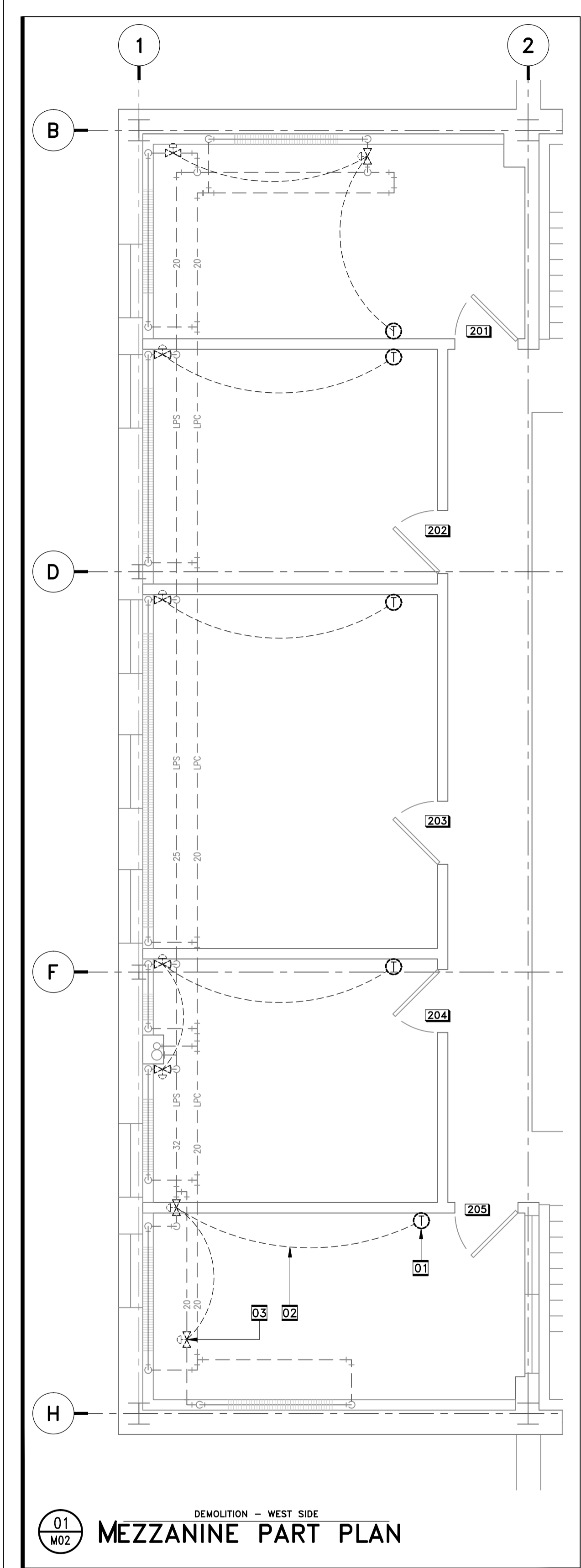
project _____ projet _____

Building M-14
Mezzanine Office HVAC Retrofit
Montreal Road Campus

drawing: MECHANICAL DEMOLITION & NEW LAYOUTS Existing Office Heating Systems Control Valve and Thermostats

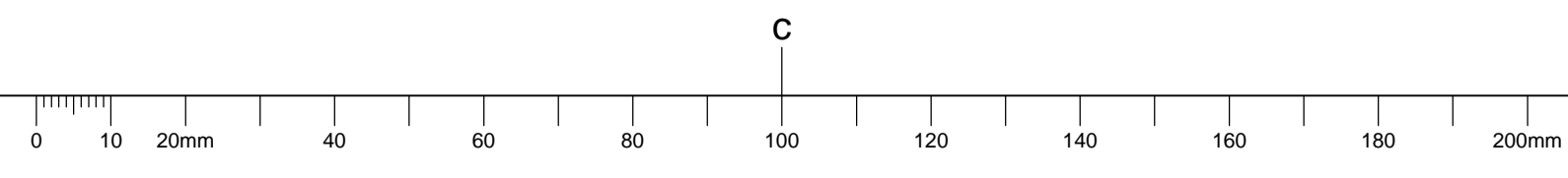
designed Rodders CAS	conçu	date August 2015	date
drawn Rodders CAS	dessiné	scale 1:50 UNO	échelle
checked IAF.	vérifié	sheet M02 of/de 03	feuille
approved BV.	approuvé	W.O.no.	D.T.no.

dwg.no. **5003-M02** dessin no.

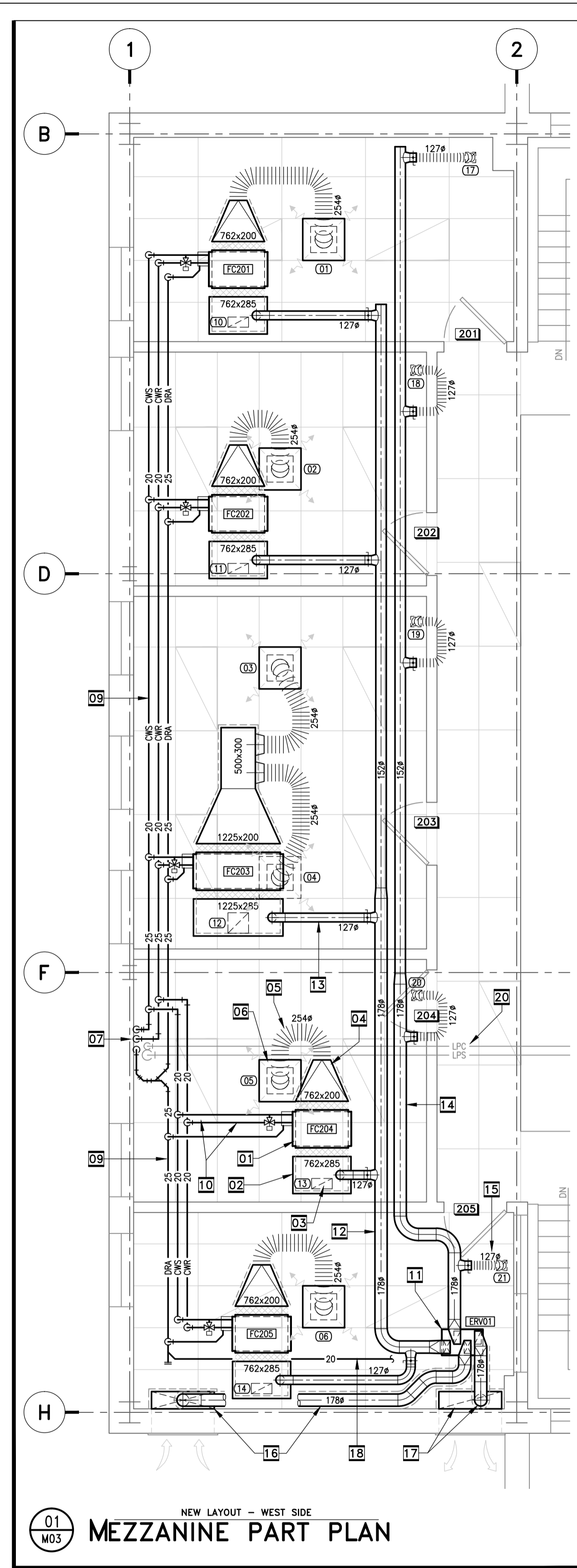


00 CONTROLS NOTES

01	TYPICAL - REMOVE EXISTING PNEUMATIC THERMOSTAT CONTROLLING PERIMETER RADIATION.
02	TYPICAL - REMOVE ALL ASSOCIATED PNEUMATIC TUBING.
03	TYPICAL - REMOVE EXISTING PNEUMATIC 2-PORT STEAM CONTROL VALVE CONTROLLING PERIMETER RADIATION.
04	TYPICAL - PROVIDE NEW ELECTRONIC TEMPERATURE SENSOR IN SAME LOCATION AS REMOVED THERMOSTAT.
05	TYPICAL - PROVIDE LOW VOLTAGE WIRING FROM THERMOSTAT TO PERIMETER RADIATION AND NEW CHILLED WATER CONTROL VALVE ON FANCOIL SYSTEM (REFER TO LATER DRAWING IN THIS SET).
06	TYPICAL - PROVIDE NEW ELECTRONIC 2-PORT MODULATING STEAM CONTROL VALVE FOR PERIMETER RADIATION.



C



Fancoil Units

ITEM NUMBER	SYSTEM REFERENCE	MODEL NUMBER	UNIT TYPE	FAN		ELECTRICAL SUPPLY	COOLING CAPACITY		COOLING		HEATING		NOTES												
				L/S	Pd		TOTAL	SENSIBLE	WATER	L/S	PD PSI	MEDIUM		PD											
FC201	OFFICE 201	FCHP04	HIDEAWAY+PLENUM	131	75	1.0	720	115/1/60	1.7	1.6	WATER	0.07	-	-	-	-	-	-	-	-	-	-	-	-	ECM MOTOR; FAN SELECTED ON MEDIUM SPEED
FC202	OFFICE 202	FCHP04	HIDEAWAY+PLENUM	138	75	1.0	720	115/1/60	1.6	1.5	WATER	0.07	-	-	-	-	-	-	-	-	-	-	-	-	ECM MOTOR; FAN SELECTED ON MEDIUM SPEED
FC203	OFFICE 203	FCHP08	HIDEAWAY+PLENUM	285	75	2.7	890	115/1/60	3.3	3.1	WATER	0.14	-	-	-	-	-	-	-	-	-	-	-	-	ECM MOTOR; FAN SELECTED ON MEDIUM SPEED
FC204	OFFICE 204	FCHP04	HIDEAWAY+PLENUM	141	75	1.0	720	115/1/60	1.7	1.6	WATER	0.07	-	-	-	-	-	-	-	-	-	-	-	-	ECM MOTOR; FAN SELECTED ON MEDIUM SPEED
FC205	OFFICE 205	FCHP04	HIDEAWAY+PLENUM	158	75	1.0	720	115/1/60	1.7	1.6	WATER	0.08	-	-	-	-	-	-	-	-	-	-	-	-	ECM MOTOR; FAN SELECTED ON MEDIUM SPEED
FC206	OFFICE 206	FCHP08	HIDEAWAY+PLENUM	246	75	2.7	890	115/1/60	2.8	2.6	WATER	0.12	-	-	-	-	-	-	-	-	-	-	-	-	ECM MOTOR; FAN SELECTED ON MEDIUM SPEED
FC207	OFFICE 207	FCHP04	HIDEAWAY+PLENUM	108	75	1.0	720	115/1/60	1.2	1.1	WATER	0.05	-	-	-	-	-	-	-	-	-	-	-	-	ECM MOTOR; FAN SELECTED ON MEDIUM SPEED

Energy Recovery Ventilators

ITEM NUMBER	SYSTEM REFERENCE	MODEL NUMBER	CONNECTION TYPE	FAN		ELECTRICAL SUPPLY	SENSIBLE EFFICIENCY	NOTES			
				L/S	Pd						
ERV01	-	90H-V	TOP CONNECT	60	125	90	-	115/1/60	0	62	2 ECM MOTORS; WASHABLE MERV 7 FILTERS

Grilles/Diffusers

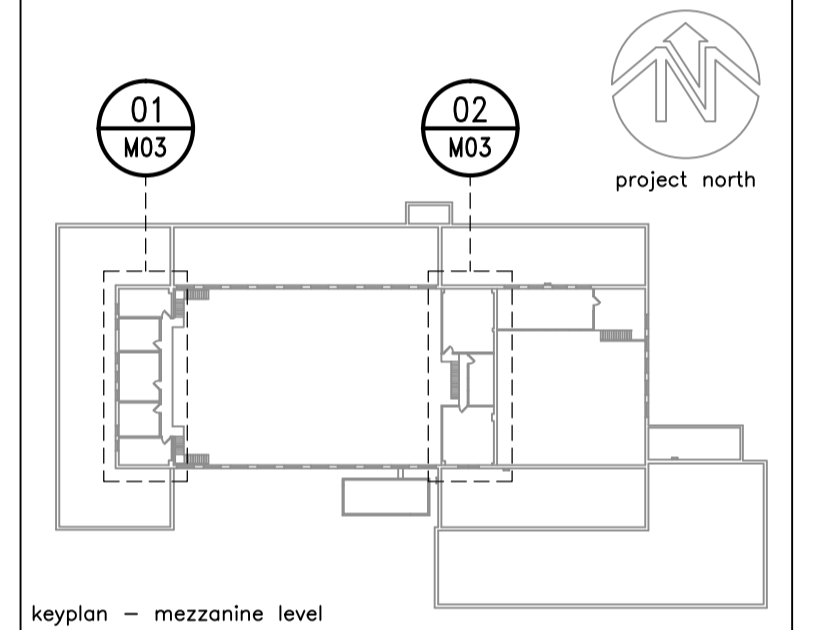
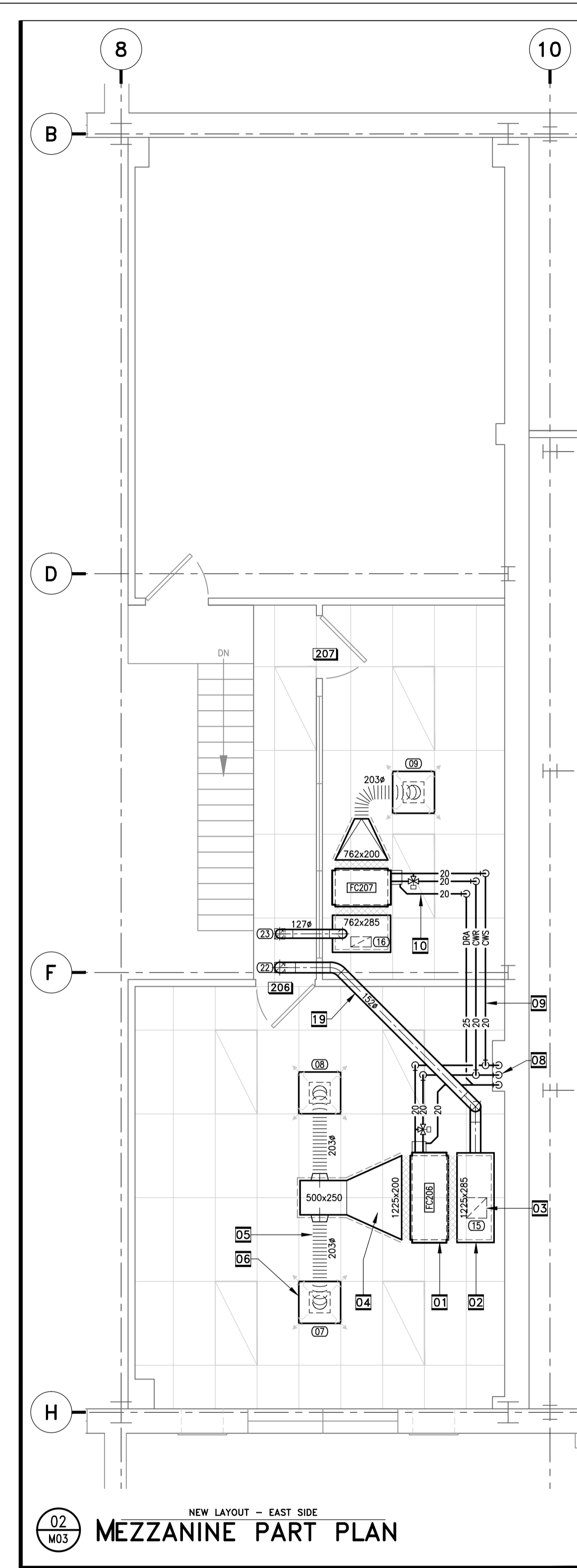
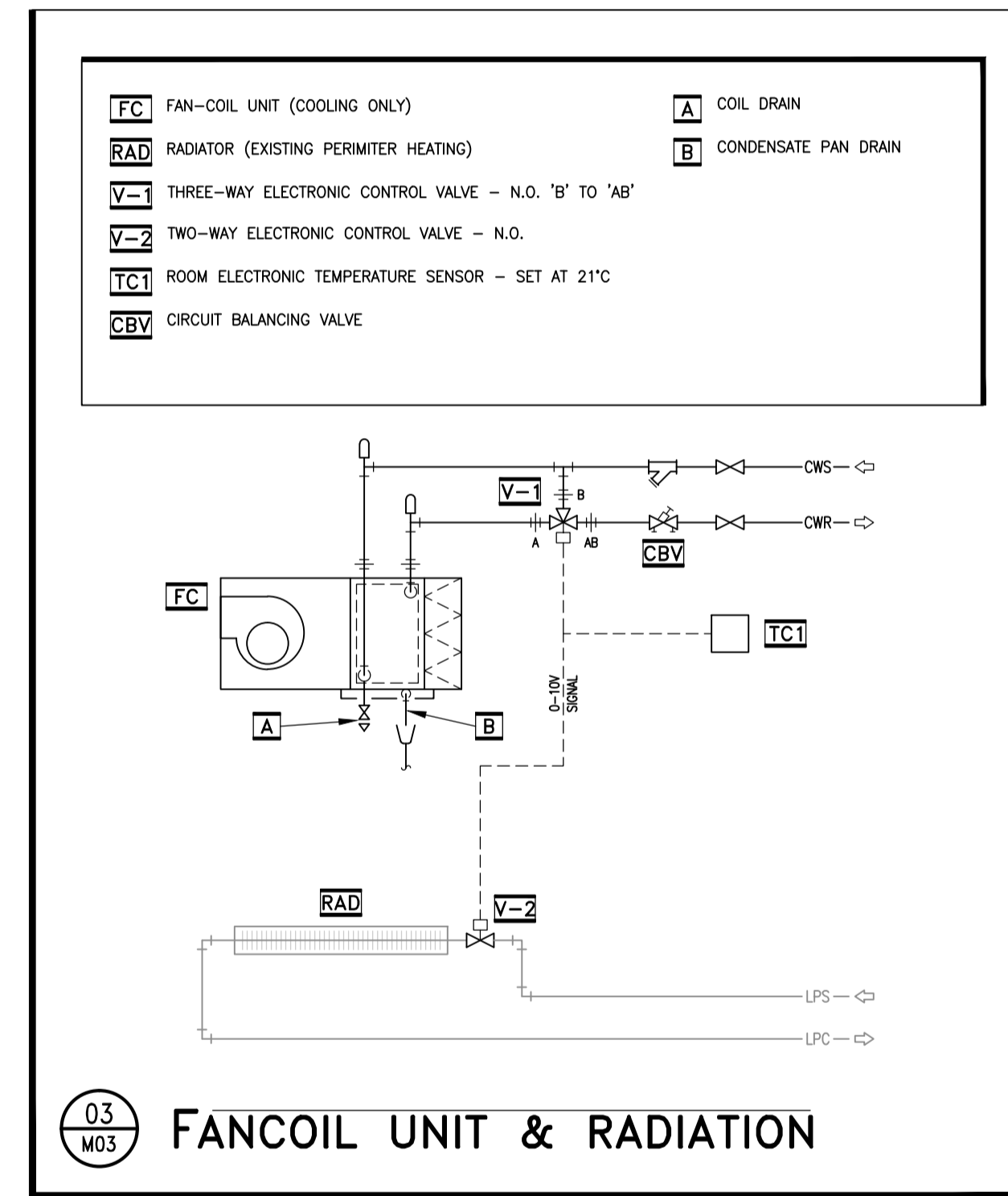
ITEM NUMBER	SYSTEM REFERENCE	MODEL NUMBER	GRILLE/DIFFUSER TYPE	AIRFLOW L/S	SIZE mm	NOTES
02	OFFICE 202	DAL 358 DN600	SWIRL	138	2544	600x600 MODULE; TOP-INLET PLENUM WITH INTEGRAL PERFORATED PLATE; WHITE FINISH
03	OFFICE 203	DAL 358 DN600	SWIRL	142	2544	600x600 MODULE; TOP-INLET PLENUM WITH INTEGRAL PERFORATED PLATE; WHITE FINISH
04	OFFICE 204	DAL 358 DN600	SWIRL	142	2544	600x600 MODULE; TOP-INLET PLENUM WITH INTEGRAL PERFORATED PLATE; WHITE FINISH
05	OFFICE 205	DAL 358 DN600	SWIRL	141	2544	600x600 MODULE; TOP-INLET PLENUM WITH INTEGRAL PERFORATED PLATE; WHITE FINISH
06	OFFICE 206	DAL 358 DN600	SWIRL	158	2544	600x600 MODULE; TOP-INLET PLENUM WITH INTEGRAL PERFORATED PLATE; WHITE FINISH
07	OFFICE 207	DAL 358 DN600	SWIRL	123	2034	600x600 MODULE; TOP-INLET PLENUM WITH INTEGRAL PERFORATED PLATE; WHITE FINISH
08	OFFICE 201	50F-NT	EGG-CRATE	123	2034	600x600 MODULE; TOP-INLET PLENUM WITH INTEGRAL PERFORATED PLATE; WHITE FINISH
09	OFFICE 202	50F-NT	EGG-CRATE	107	2034	600x600 MODULE; TOP-INLET PLENUM WITH INTEGRAL PERFORATED PLATE; WHITE FINISH
10	OFFICE 203	50F-NT	EGG-CRATE	-	300x150	WHITE FINISH
11	OFFICE 204	50F-NT	EGG-CRATE	-	300x150	WHITE FINISH
12	OFFICE 205	50F-NT	EGG-CRATE	-	300x300	WHITE FINISH
13	OFFICE 206	50F-NT	EGG-CRATE	-	300x150	WHITE FINISH
14	OFFICE 207	50F-NT	EGG-CRATE	-	300x150	WHITE FINISH
15	OFFICE 201	50F-NT	EGG-CRATE	-	300x300	WHITE FINISH - C/W BALANCING DAMPER
16	OFFICE 202	50F-NT	EGG-CRATE	-	300x150	WHITE FINISH - C/W BALANCING DAMPER
17	OFFICE 203	50F-NT	EGG-CRATE	-	150x150	WHITE FINISH
18	OFFICE 204	50F-NT	EGG-CRATE	-	150x150	WHITE FINISH
19	OFFICE 205	50F-NT	EGG-CRATE	-	150x150	WHITE FINISH
20	OFFICE 206	50F-NT	EGG-CRATE	-	150x150	WHITE FINISH
21	OFFICE 207	50F-NT	EGG-CRATE	-	150x150	WHITE FINISH
22	OFFICE 201	50F-NT	EGG-CRATE	-	150x150	WHITE FINISH
23	OFFICE 202	50F-NT	EGG-CRATE	-	150x150	WHITE FINISH

00 NEW LAYOUT NOTES

- TYPICAL - PROVIDE FANCOIL UNIT SUSPENDED ON SPRING MOUNTS ABOVE NEW T-BAR CEILING GRID. WIRING BY ELECTRICAL CONTRACTOR. INSTALL UNIT TO MANUFACTURER'S RECOMMENDATIONS, ALLOWING FOR EASY ACCESS TO CONNECTIONS AND FILTERS.
- TYPICAL - PROVIDE ACOUSTICALLY-LINED RETURN AIR PLENUM C/W FLEXIBLE CONNECTION ONTO FANCOIL UNIT.
- TYPICAL - PROVIDE CONNECTION FROM RETURN AIR PLENUM DOWN TO EGG-CRATE RETURN AIR GRILLE IN CEILING BELOW.
- TYPICAL - PROVIDE THERMALLY-INSULATED DISCHARGE DUCTING C/W FLEXIBLE CONNECTION ONTO FANCOIL UNIT.
- TYPICAL - PROVIDE ACOUSTIC FLEXIBLE DUCT CONNECTIONS ONTO DIFFUSERS, PER SPECIFICATION.
- TYPICAL - PROVIDE SWIRL DIFFUSERS AS SHOWN, C/W TOP-CONNECTION PLENUM AND INTEGRAL PERFORATED EQUALIZING PLATE.
- ON WEST SIDE - EXISTING 40mm CHILLED WATER S&R RISERS, AND 25mm DRAIN RISER.
- ON EAST SIDE - EXISTING 32mm CHILLED WATER S&R RISERS, AND 25mm DRAIN RISER.
- TYPICAL - PROVIDE CHILLED WATER AND DRAIN PIPING AS INDICATED ABOVE CEILING LEVEL.
- TYPICAL - PROVIDE 20mm CHILLED WATER AND DRAIN CONNECTIONS TO FANCOIL PER SCHEMATIC ON THIS DRAWING.
- PROVIDE ENERGY RECOVERY VENTILATOR ABOVE NEW T-BAR CEILING. WIRING BY ELECTRICAL CONTRACTOR. INSTALL UNIT TO MANUFACTURER'S RECOMMENDATIONS, ALLOWING FOR EASY ACCESS TO CONNECTIONS AND FILTERS.
- TYPICAL - PROVIDE OUTDOOR AIR DISTRIBUTION DUCTING AS INDICATED.
- TYPICAL - PROVIDE OUTDOOR AIR BRANCH CONNECTION ONTO RETURN AIR PLENUM AS INDICATED, C/W BALANCING DAMPER.
- TYPICAL - PROVIDE EXHAUST AIR DUCTING AS INDICATED.
- TYPICAL - PROVIDE EXHAUST AIR BRANCH CONNECTION DOWN ONTO EGG-CRATE GRILLE IN CEILING, C/W BALANCING DAMPER.
- PROVIDE THERMALLY-INSULATED OUTDOOR AIR DUCTING CONNECTING TO ERV. PROVIDE INSULATED INTAKE PLENUM OVER BACK OF EXISTING INTAKE LOUVER, SIZED TO SUIT.
- PROVIDE THERMALLY-INSULATED EXHAUST AIR DUCTING CONNECTING TO ERV. PROVIDE INSULATED PLENUM OVER BACK OF EXISTING EXHAUST LOUVER, SIZED TO SUIT.
- PROVIDE 20mm DRAIN PIPING FROM ERV AS SHOWN.
- TYPICAL - FOR THE EAST SIDE FANCOIL SYSTEMS, PROVIDE VENTILATION AIR DUCTING FROM RETURN AIR PLENUMS ACROSS AND DOWN ONTO EGG-CRATE GRILLES IN T-BAR CEILING.
- AVOID INTERFERENCE WITH HIGH LEVEL STEAM & CONDENSATE PIPING, TO REMAIN IN CEILING SPACE.

00 GENERAL CONTROLS NOTES

- MECHANICAL CONTRACTOR SHALL HIRE AIRTRON CANADA FOR ALL CONTROLS-RELATED WORK ON THIS PROJECT.
- CONTROLS WORK SHALL TYPICALLY INCLUDE BUT NOT NECESSARILY BE LIMITED TO PROVISION OF ALL CONTROL HARDWARE, TEMPERATURE SENSORS, PERIMETER RADIATION CONTROL VALVES, FANCOIL CONTROL VALVES, FANCOIL STOP/START CONTACTORS, CONTROL INTERFACE FOR THE ENERGY RECOVERY VENTILATOR, AND PROGRAMMING AND DDC SCREENS FOR EACH INDIVIDUAL FANCOIL SYSTEM.



No.	Date	Revision	By: Par:
00	2015.08.24	ISSUED FOR TENDER	IAF

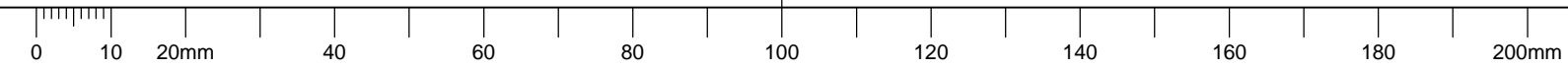
Date Printed: _____ Date imprimée: _____

- Verify all dimensions and site conditions and be responsible for same
- Vérifier toutes les dimensions et l'état des lieux et en assumer la responsabilité

A	A Detail no. / No. du détail	B	B Location drawing no. / sur dessin no.	C	C Drawing no. / dessin no.
---	------------------------------	---	---	---	----------------------------

project: **Building M-14 Mezzanine Office HVAC Retrofit**
 Montreal Road Campus
 drawing: **MECHANICAL NEW WORK New Office HVAC Systems**
 designed: **Rodders CAS** congé date: **August 2015**
 drawn: **Rodders CAS** dessiné scale: **1:50 UNO** échelle
 checked: **IAF.** vérifié sheet: **M03** of/de **03** feuille
 approved: **BV.** approuvé W.O.no. _____ D.T.no. _____
 dwg.no. **5003-M03** dessin no. _____

Mechanical Legend		Mechanical Legend		Mechanical Legend		Mechanical Legend	
ITEM	DESCRIPTION	ITEM	DESCRIPTION	ITEM	DESCRIPTION	ITEM	DESCRIPTION
→ CWS	CHILLED WATER SUPPLY	→ G	PIPE DROPS DOWN	→ V	2-PORT MODULATING VALVE - PNEUMATIC	→ T	PNEUMATIC THERMOSTAT
→ CWR	CHILLED WATER RETURN	→ U	PIPE RISES UP	→ V	2-PORT MODULATING VALVE - ELECTRONIC	→ T	ELECTRONIC TEMPERATURE SENSOR
→ LPS	LOW PRESSURE STEAM	→ B	BRANCH OFF TOP OF PIPE	→ V	3-PORT MODULATING VALVE - ELECTRONIC		
→ LPC	LOW PRESSURE CONDENSATE	→ B	BRANCH OFF BOTTOM OF PIPE	→ V	BALANCING VALVE WITH PRESSURE TAPPINGS	→ S	PIPELINE STRAINER
→ DRA	DRAINAGE PIPING	→ S	BREAK INDICATION - TYPICALLY PIPING	→ V	ISOLATING VALVE	→ U	SCHEMATIC - FUNNEL DRAIN





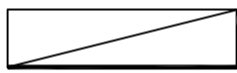

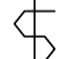
GENERAL NOTES

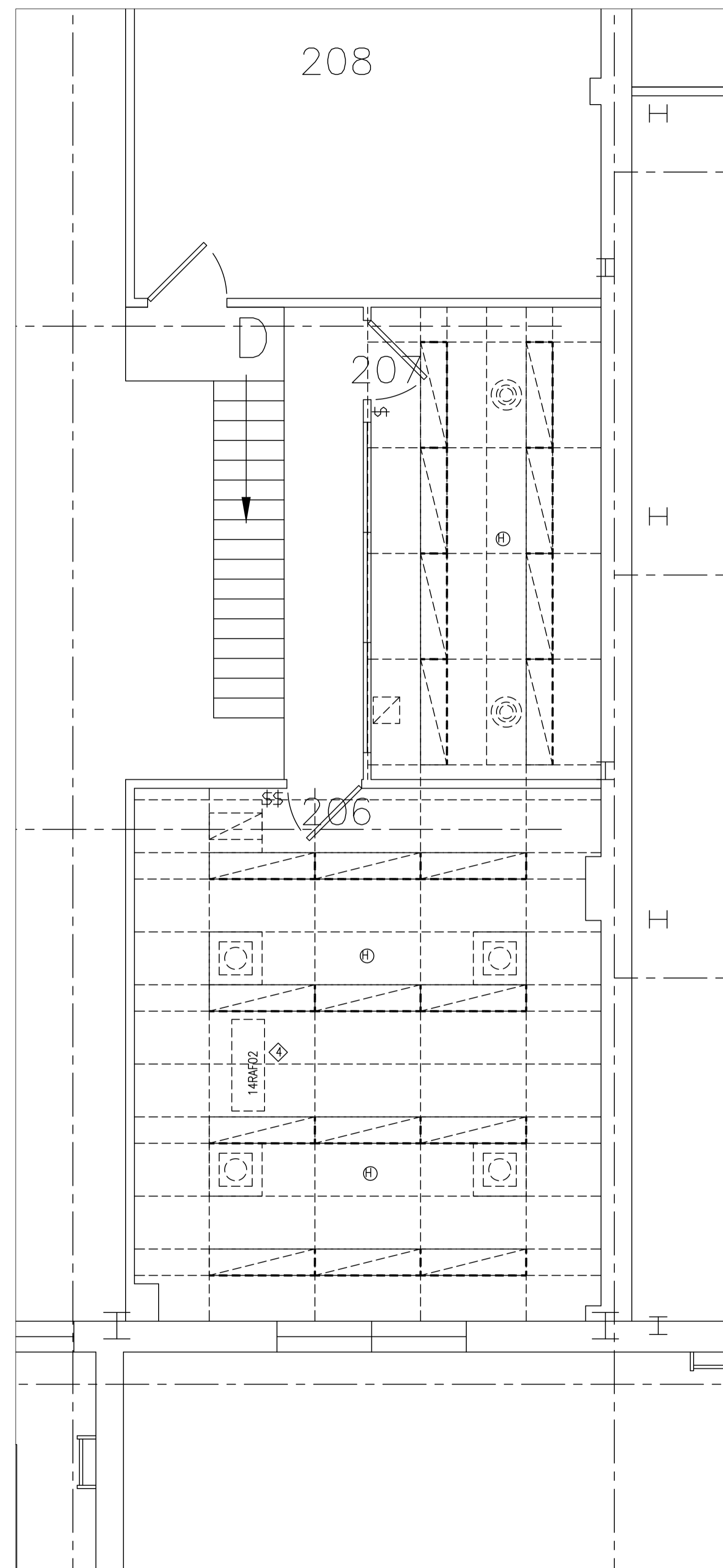
- A READ THIS DRAWING IN CONJUNCTION WITH ARCHITECTURAL AND MECHANICAL DRAWINGS AND SPECIFICATIONS.
- B CONTRACTORS TO CHECK AND VERIFY ALL DIMENSIONS ON SITE PRIOR TO DEMOLITION OR CONSTRUCTION AND REPORT ANY ERRORS OR OMISSIONS TO NRC DEPARTMENTAL REPRESENTATIVE.
- C CONTRACTORS MUST VISIT THE SITE & FULLY FAMILIARIZE THEMSELVES WITH THE SCOPE OF THE WORK.
- D PREVENT THE SPREAD OF DUST & DEBRIS BEYOND THE WORK AREA AND CLEAN ALL SURFACES AT COMPLETION.
- E MAKE GOOD ALL SURFACES AFFECTED BY THIS WORK.
- F COORDINATE ALL SHUTDOWNS WITH THE NRC DEPARTMENTAL REPRESENTATIVE.
- G FILL ALL HOLES, PATCH & PAINT ALL SURFACES IN CONTRACT AREA. COLOUR SCHEME TO MATCH EXISTING.
- H REMOVE MEANS REMOVE AND DISPOSE OF OFF SITE UNLESS OTHERWISE NOTED.
- I PROVIDE LABELS TO NEW DEVICES TO INDICATE POWER SOURCE. UPDATE PANEL SCHEDULES AFTER JOB COMPLETION.
- J REFER TO ARCHITECTURAL REFLECTED CEILING PLAN FOR FINAL PLACEMENT OF LIGHT FIXTURES.
- K ALL WIRE TO BE IN EMT UNLESS OTHERWISE NOTED.
- L OUTAGE IS ONLY SCHEDULED DURING WEEKEND OR AFTER HOUR, UNLESS OTHERWISE SPECIFIED BY NRC REPRESENTATIVE
 - WEEKEND OUTAGE MUST BE CARRIED BETWEEN FRIDAY 1800 AND MONDAY 0300
 - AFTER HOUR OUTAGE MUST BE CARRIED BETWEEN SAME DAY 1800 AND NEXT DAY 0300
 - ALL LOADS TO BE RESUMED AT THE END OF OUTAGE
- M TO USE NRC OWNED CRANE ON SITE. CONTRACTOR IS REQUIRED TO PROVIDE OWN CERTIFIED CRANE OPERATOR, AND CERTIFY THE CRANE BEFORE AND AFTER EACH OPERATION. AS ALTERNATIVE, CONTRACTOR CAN BRING OWN CRANE.

ELECTRICAL WORK: ◊

1. DISCONNECT AND REMOVE EXISTING LIGHTING FIXTURES, WIRING TO BE REUSED FOR NEW FIXTURES.
2. REMOVE EXISTING LIGHTING SWITCH, COVER WITH BLANK PLATE.
3. FIRE ALARM HEAT DETECTOR TO REMAIN WHILE REMOVING CEILING TILE, TO BE RELOCATED TO NEW LOCATION AS PER NEW CEILING PLAN.
4. DISCONNECT AND REMOVE WIRING BACK TO SOURCE.

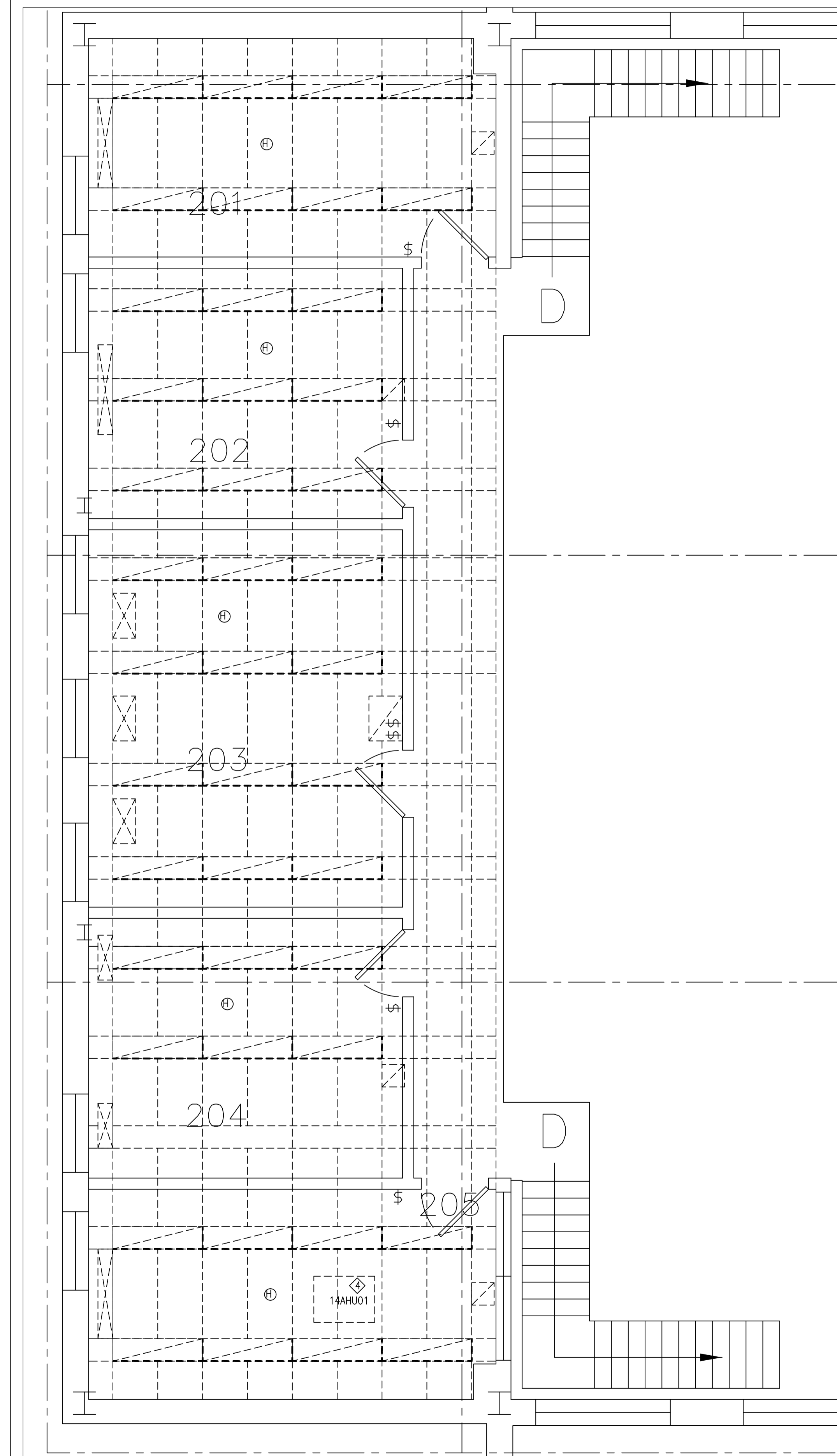
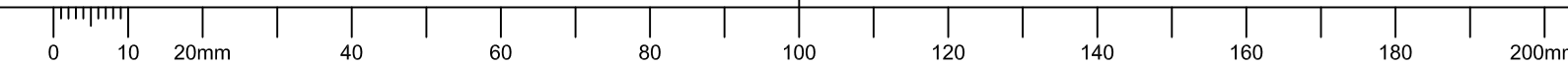
LEGEND

-  1'x4' LIGHT FIXTURE ◊
-  HEAT DETECTOR ◊
-  LIGHT SWITCH ◊



1 PARTIAL SECOND FLOOR DEMOLITION PLAN
 SCALE: 1:100

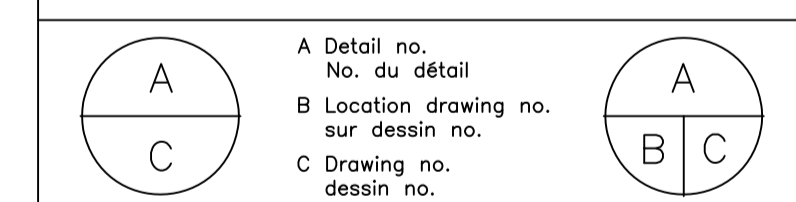
C



No.	Date	Revision	By:
0	AUG 2015	ISSUED FOR TENDER	KXL

Date Printed DD MM YYYY Date imprimée

- o Verify all dimensions and site conditions and be responsible for same
- o Vérifier toutes les dimensions et l'état des lieux et en assumer la responsabilité



project **BUILDING M-14** projet
MEZZANINE OFFICE HVAC RETROFIT
MONTREAL ROAD CAMPUS

drawing **PARTIAL MEZZANINE PLANS** dessin
CEILING DEMOLITION PLAN

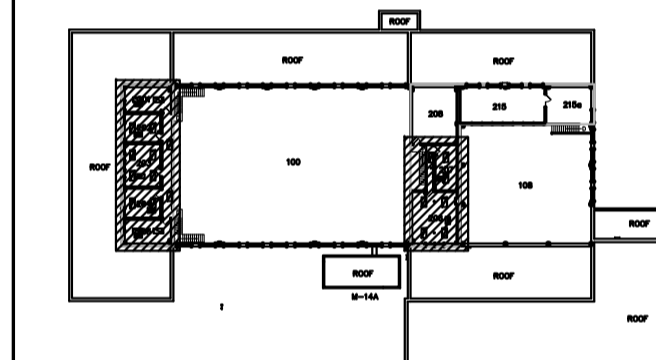
designed	conçu	date	date
KXL		AUG/2015	
drawn	dessiné	scale	échelle
KXL		AS NOTED	
checked	vérifié	sheet	feuille
KXL		E01 of/de E02	
approved	approuvé	W.O.no.	D.T.no.
BAV			
dwg.no.	dessin no.		

5003-E01

GENERAL NOTES

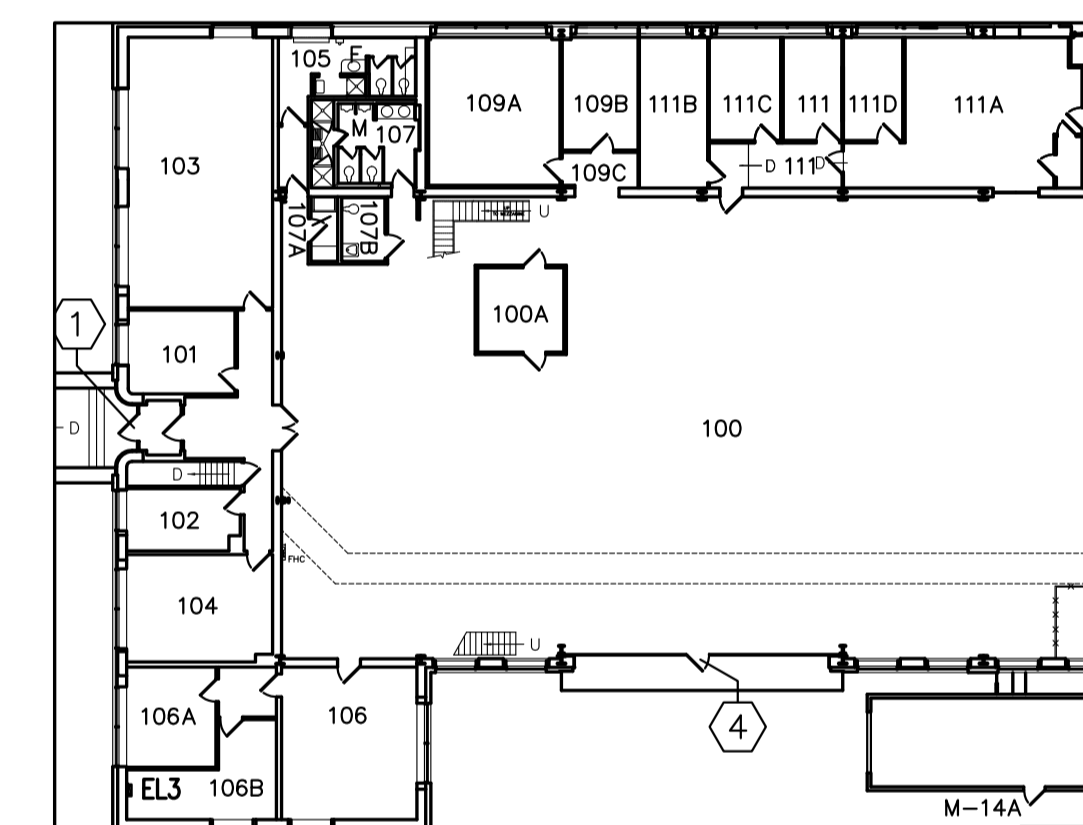
- CONTRACTORS TO CHECK AND VERIFY ALL DIMENSIONS ON SITE PRIOR TO DEMOLITION OR CONSTRUCTION AND REPORT ANY ERRORS OR OMISSIONS TO DEPARTMENTAL REPRESENTATIVE.
- CONTRACTORS MUST VISIT THE SITE & FULLY FAMILIARIZE THEMSELVES WITH THE SCOPE OF THE WORK.
- PREVENT THE SPREAD OF DUST & DEBRIS BEYOND THE WORK AREA AND CLEAN ALL SURFACES AT COMPLETION.
- MAKE GOOD ALL SURFACES AFFECTED BY THIS WORK.
- COORDINATE ALL SHUTDOWNS WITH THE DEPARTMENTAL REPRESENTATIVE.
- PROVIDE ALL LABOUR AND MATERIAL REQUIRED TO FORM A COMPLETE, FUNCTIONAL SYSTEM AS DESCRIBED ON DRAWINGS.
- CONTRACTORS SHALL SUBMIT FOR REVIEW SHOP DRAWINGS BEFORE THE START OF FABRICATION.
- PROVIDE LABELS TO NEW DEVICES TO INDICATE POWER SOURCE. UPDATE PANEL SCHEDULES AFTER JOB COMPLETION.
- ALL WIRE TO BE IN EMT UNLESS OTHERWISE NOTED.

KEY PLAN



ELECTRICAL WORK:

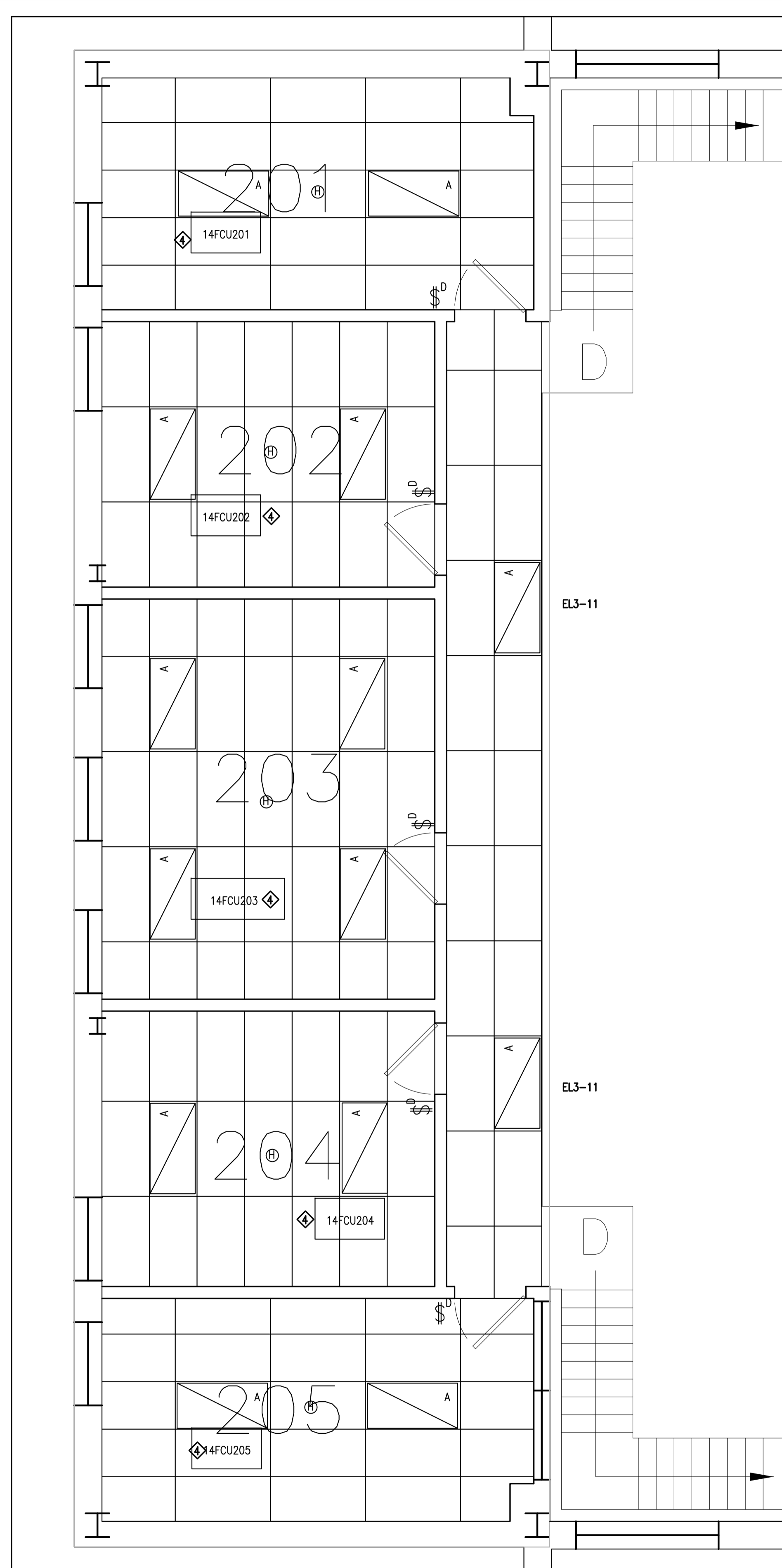
- PROVIDE NEW LED LIGHTING AND POWER AS INDICATED.
 - PHILIPS CFI SPECPLUS 2'X4' RECESSED LUMINAIRE, DIMMING CAPABILITY, CAT: SPS24GFSM43A40U; OR LITHONIA 2GTL 4 40L EZI LP840, QTY: 21
 - REUSE EXISTING CIRCUIT EXCEPT INDICATED IN THE DRAWING.
 - PROVIDE NEW WIRING FROM PANEL EL3 IN RM. 106B FOR LIGHTS IN CORRIDOR.
- PROVIDE DIMMER FOR EACH ROOM.
 - WALL MOUNT, WHITE COLOR.
 - DIMMER: PHILIPS SUNRISE, SR1200ZTUNV, SINGLE-POLE OR SYNERGY ISD BC 120.277 WH
 - REPLACE EXISTING LIGHTING SWITCH.
 - PROVIDE 0-10V LOW VOLTAGE WIRING TO FIXTURE
- REINSTATE FIRE ALARM HEAT DETECTOR
 - RECONNECT EXISTING HEAT DETECTORS AS SHOWN
 - CHUBB EDWARDS TO PERFORM VERIFICATION AS PER ULC-S537.
- PROVIDE POWER TO FAN COIL UNIT.
 - SAME CIRCUIT AS LIGHTING IN THE ROOM.
 - PROVIDE #12 WIRE TO THERMOSTAT UNIT AND TO FAN COIL MULTI-SPEED TERMINATION AS PER MANUFACTURER INSTRUCTION.
 - REFER TO MECH. DRAWING FOR UNIT LOCATION.



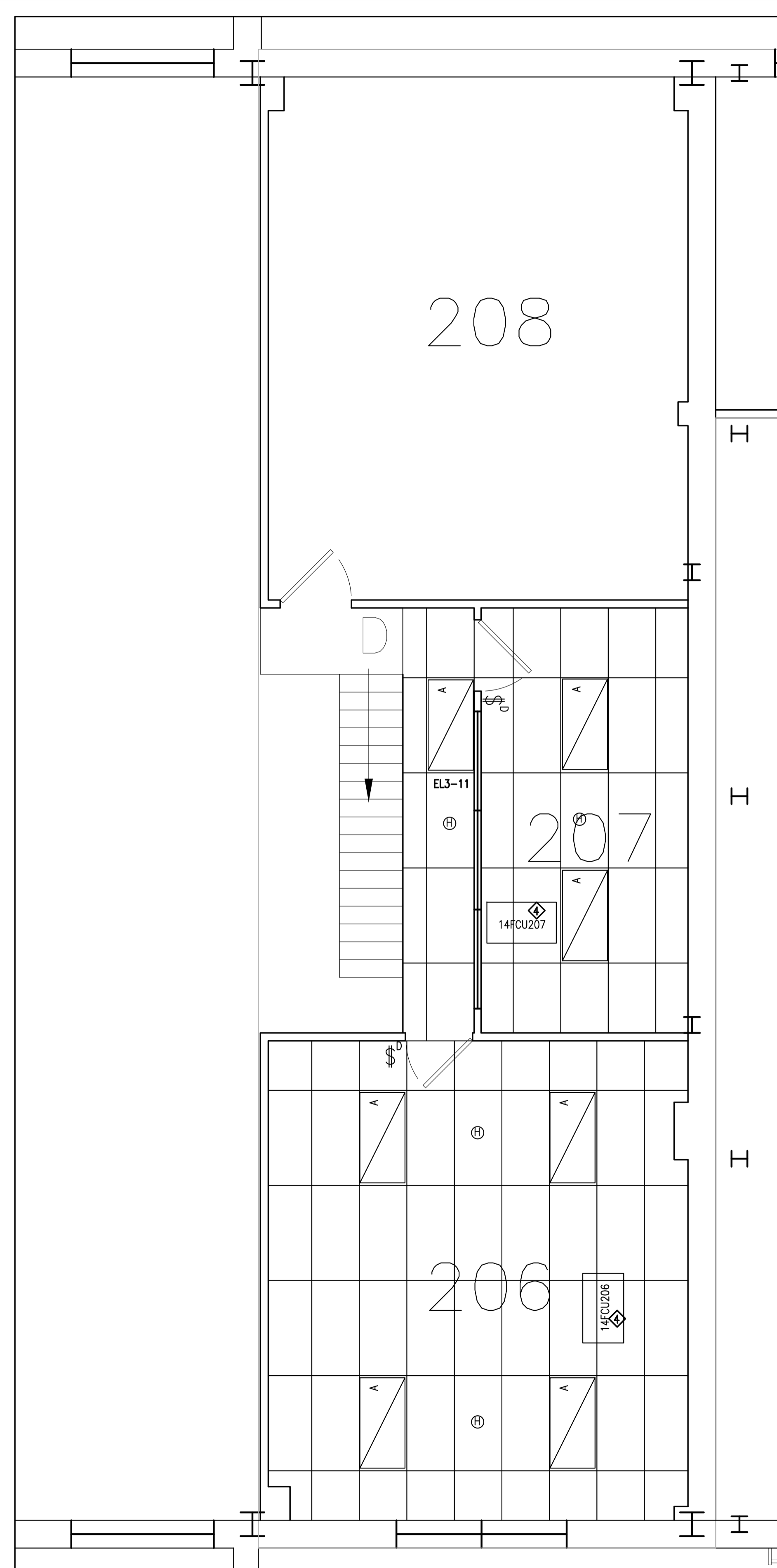
3 M-14 - PARTIAL FLOOR PLAN - GND
 1:300
 G01

LEGEND

- HEATER DETECTOR
- DIMMING SWITCH
- LED 2'X4' RECESSED LIGHTING FIXTURE



1 M-14 - PARTIAL FLOOR PLAN - WEST MEZZANINE
NEW REFLECTED CEILING PLAN
 1:40
 G01

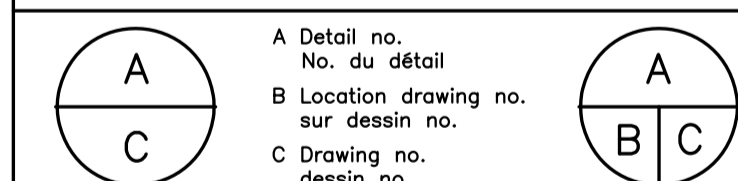


2 M-14 - PARTIAL FLOOR PLAN - EAST MEZZANINE
NEW REFLECTED CEILING PLAN
 1:40
 G01

No.	Date	Revision	By:
1	AUG 2015	ISSUED FOR TENDER	KXL

Date Printed 05/02/2015 Date imprimée

- Verify all dimensions and site conditions and be responsible for same
- Vérifier toutes les dimensions et l'état des lieux et en assumer la responsabilité



project projet

BUILDING M-14
MEZZANINE OFFICE HVAC RETROFIT

MONTREAL ROAD CAMPUS

PARTIAL MEZZANINE PLANS
NEW REFLECTED CEILING PLAN

designed conçu date date

KXL AUG 2015

drawn dessiné scale échelle

KXL AS INDICATED

checked vérifié sheet of/de feuille

KXL E02 of/de E02

approved approuvé W.O.no. D.T.no.

BAV

dwg.no. dessin no.

5003-E02