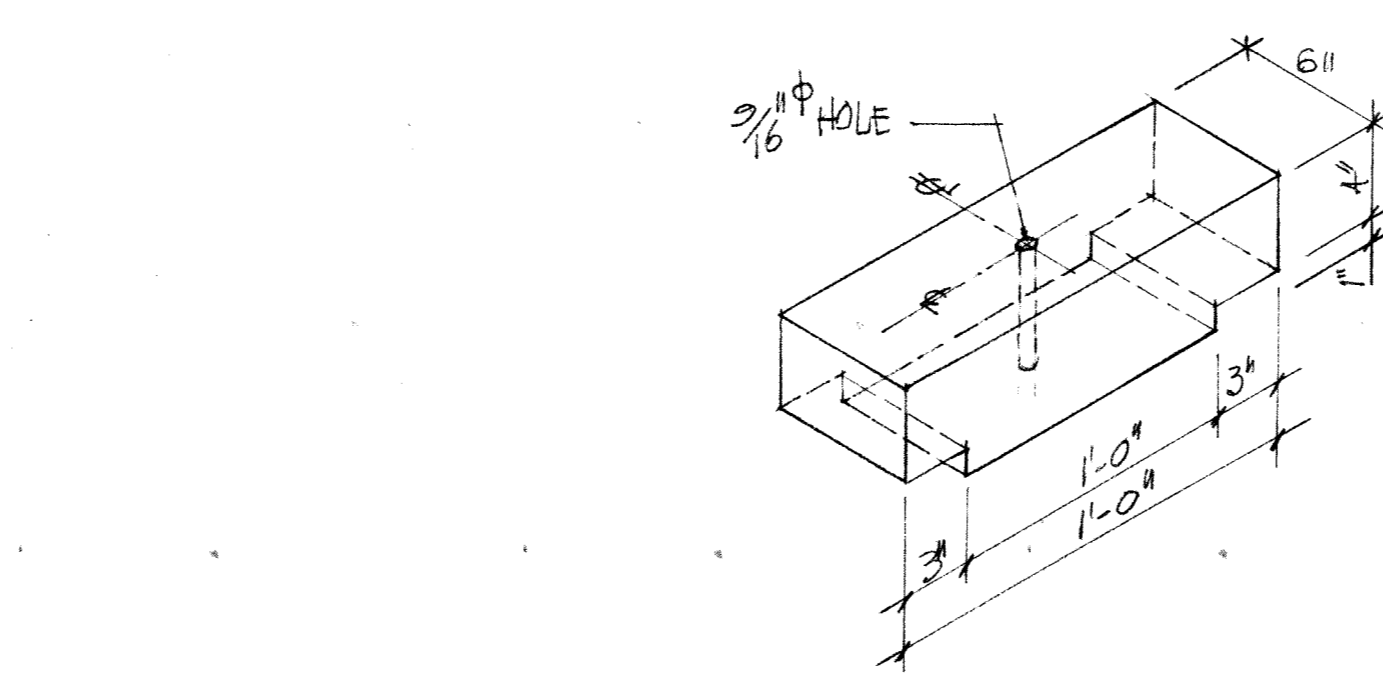
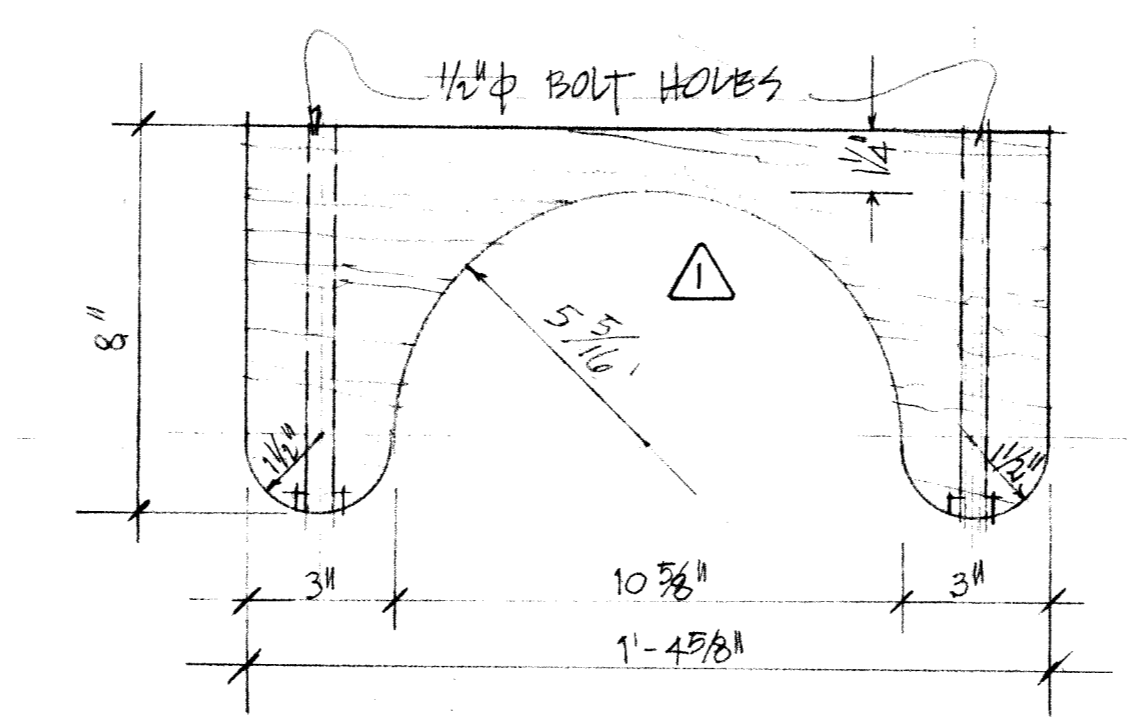


27 PLAN
SCALE: 3/4" = 1'-0"

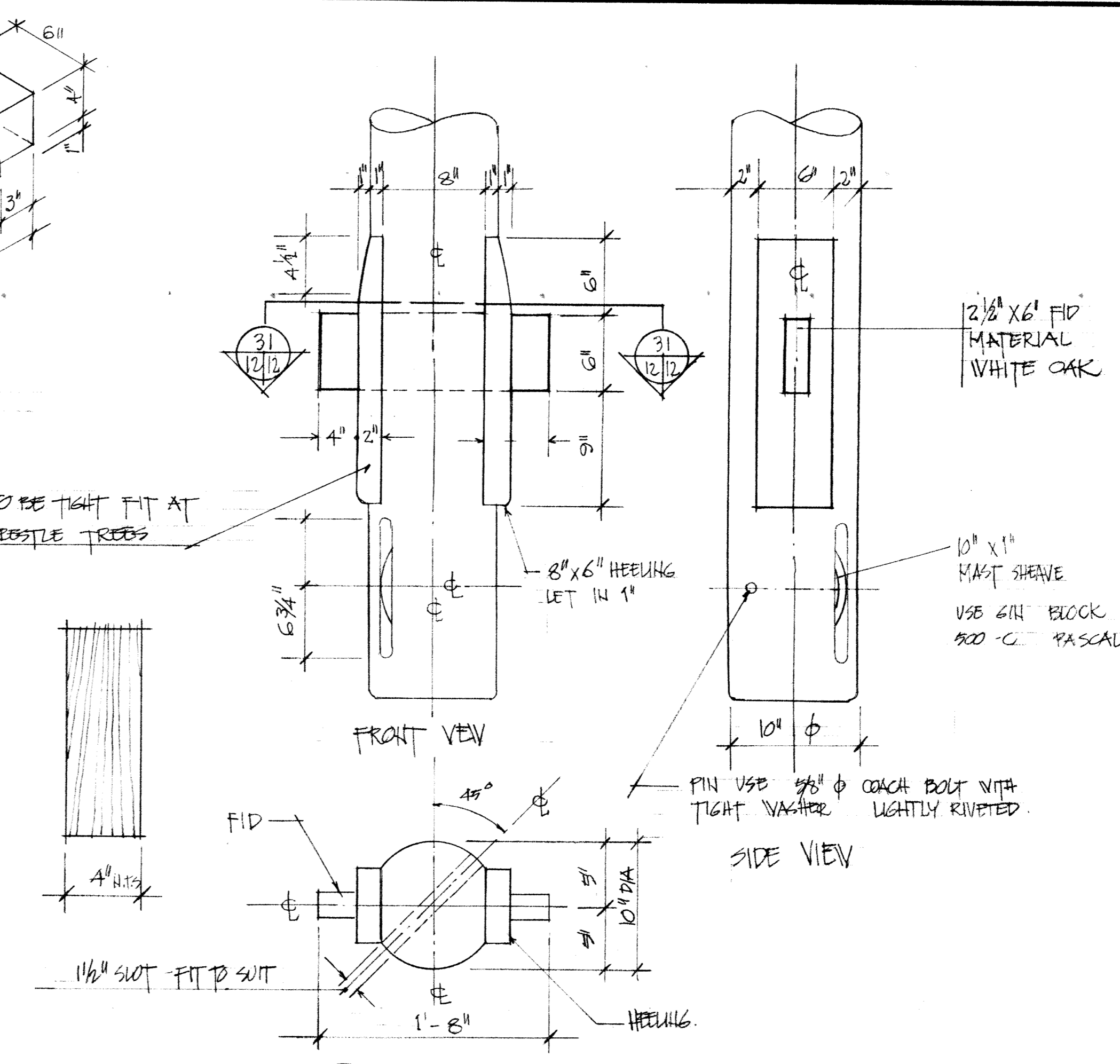
NOTE: TOP TO BE CONSTRUCTED FROM SELECT STRUCTURAL SPRUCE ALL DIMENSIONS ARE ACTUAL



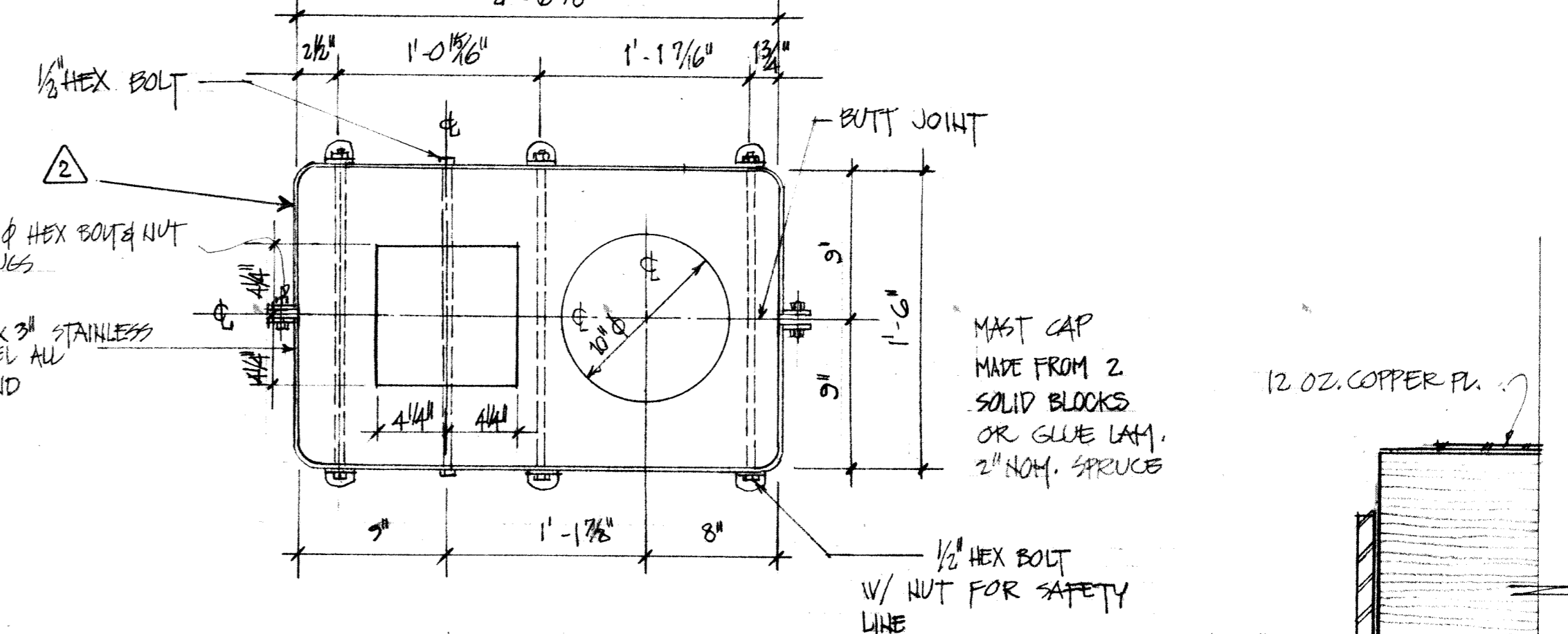
28 YARD SUPPORTING BLOCK
SCALE 1 1/2" = 1'-0"



29 YARD HOLDING BLOCK - OAK
SCALE 3" = 1'-0"

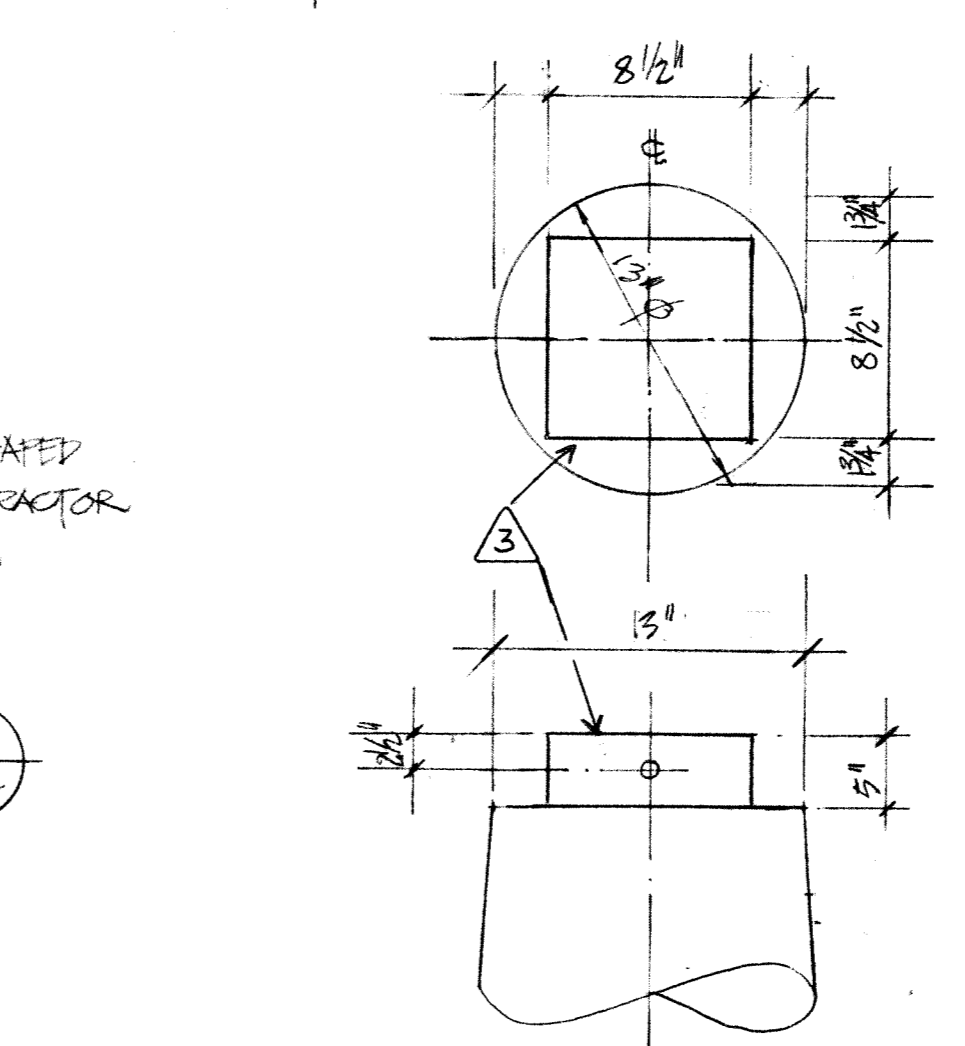


30 TOP SIGNAL MAST
SCALE 1 1/2" = 1'-0"



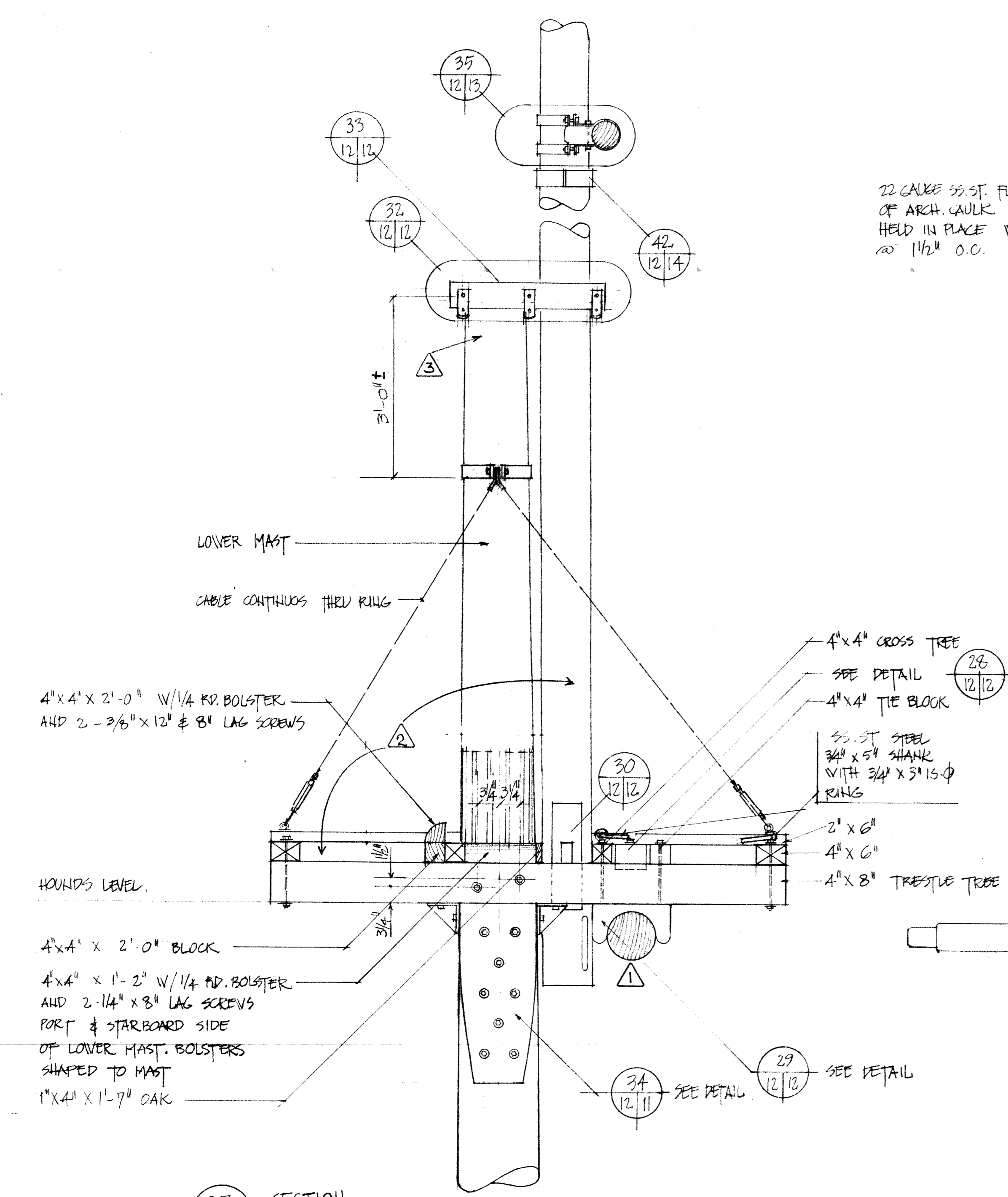
32 MAIN MAST CAP
SCALE 1 1/2" = 1'-0"

72 DETAIL OF STAINLESS STEEL BAND
SCALE 1/2" FULL SIZE

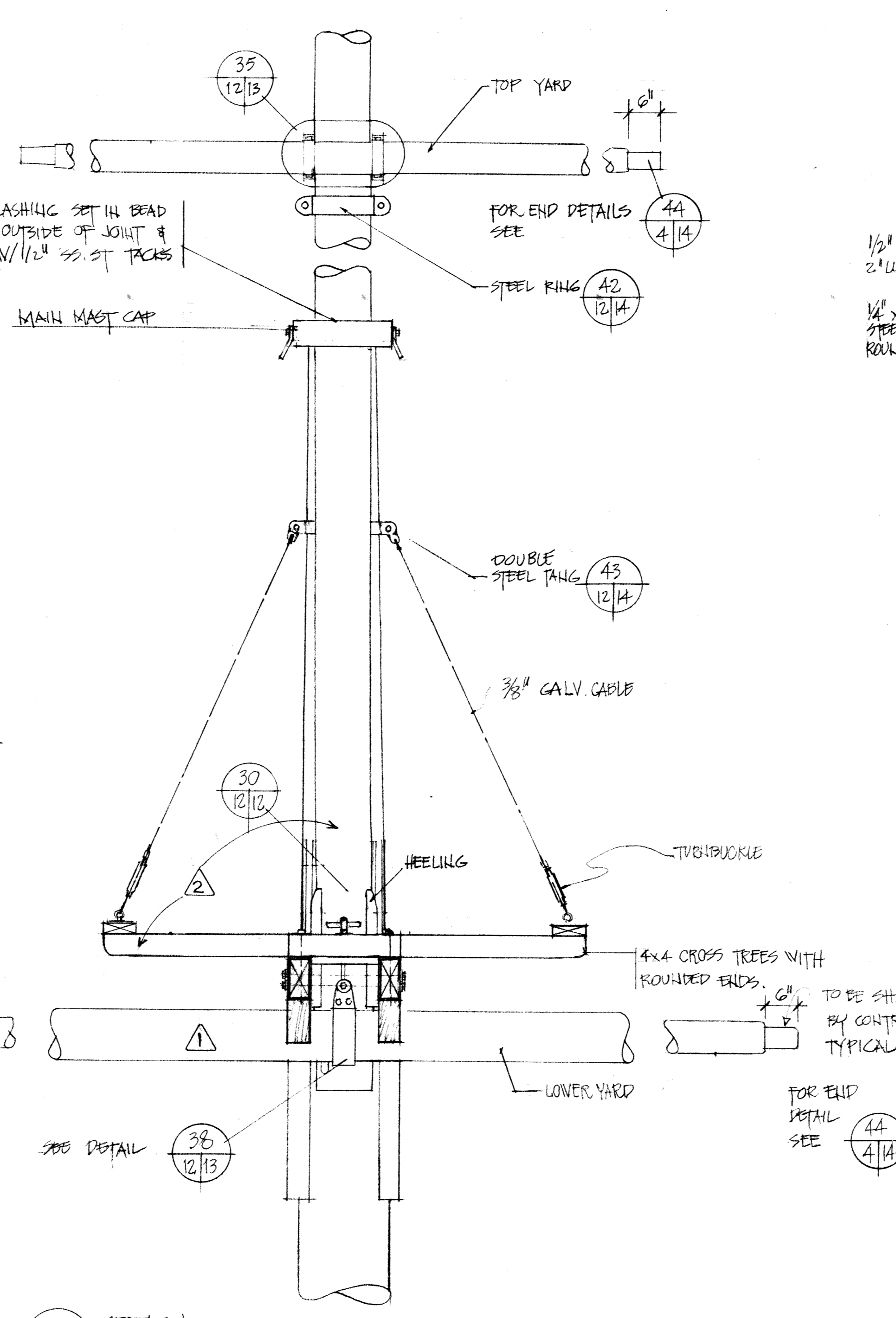


33 LOWER SIGNAL MAST
SCALE 1 1/2" = 1'-0"

NOTE: ALL BOLTS, PLATES, WASHERS & METAL BANDS ARE STAINLESS STEEL UNLESS OTHERWISE NOTED



27 SECTION
SCALE 3/4" = 1'-0"



26 SECTION
SCALE 3/4" = 1'-0"

Revisions	Date
01 02 03	REFER TO DWG. NO. 3 FOR DESCRIPTIONS.

HALIFAX OFFSHORE COMPLEX ENGINEERING	RECOMMENDED BY DESIGN TEAM
INTERPRETATION: <i>[Signature]</i> 20/1/82	ARCHAEOLOGIST
RESEARCH: R.M.D. 20.1.82	ENGINEERING: <i>[Signature]</i> 29/1/82
ARCHITECTURAL: <i>[Signature]</i>	ARCHITECTURAL: <i>[Signature]</i>
HALIFAX DEFENCE COMPLEX ENGINEERING	DATE
APPROVALS	
PROJECT MANAGER: <i>[Signature]</i> 29/1/82	
PARK SUPERINTENDENT: <i>[Signature]</i> 29/1/82	
RESEARCH: <i>[Signature]</i> 29/1/82	
INTERPRETATION: <i>[Signature]</i> 29/1/82	
ENGINEERING: <i>[Signature]</i> 29/1/82	

A detail no.	detail no.
B location dwg. no.	sur dessin no.
C drawing no.	dessin no.

drawn by / tracé par: <i>[Signature]</i>	scale / échelle: AS SHOWN
designed by / établi par: DESIGN TEAM	
checked by / vérifié par: GERALD FETTERBERG	

job captain / chef de projet	date
responsible officer / officier responsable	date: 26 FEB 82

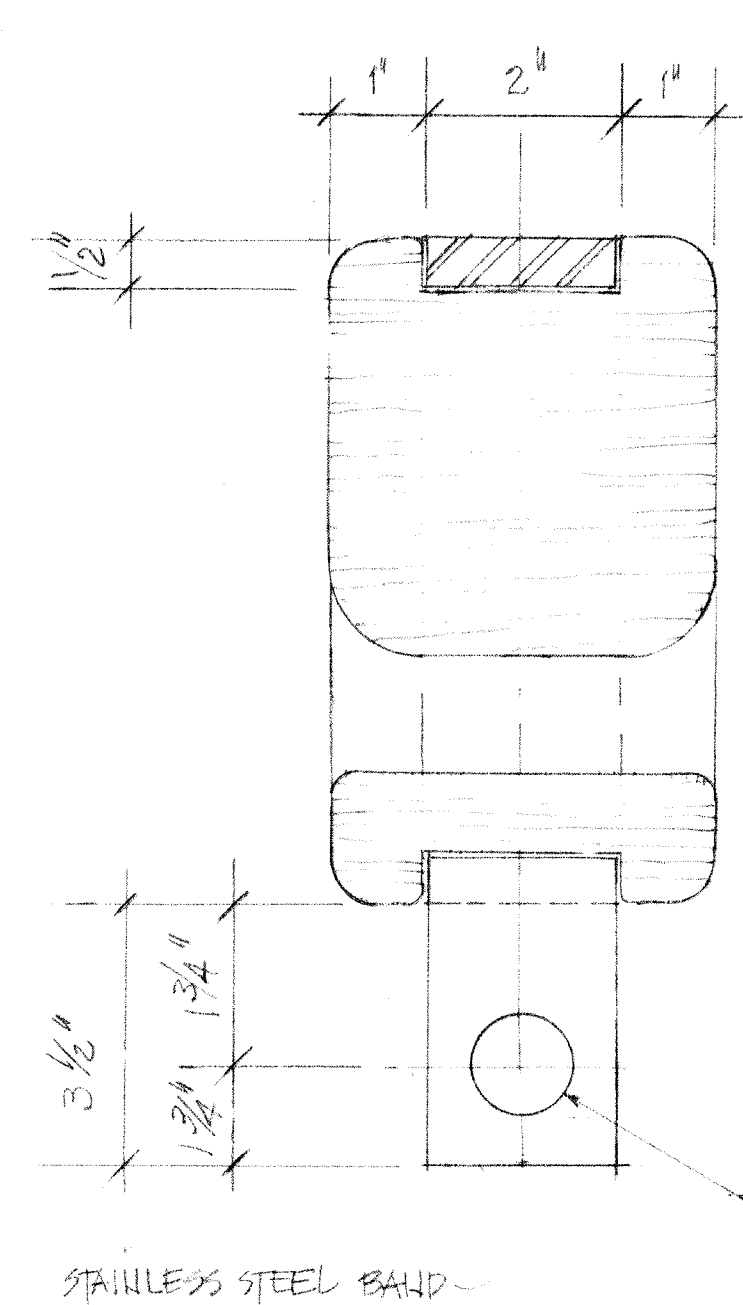
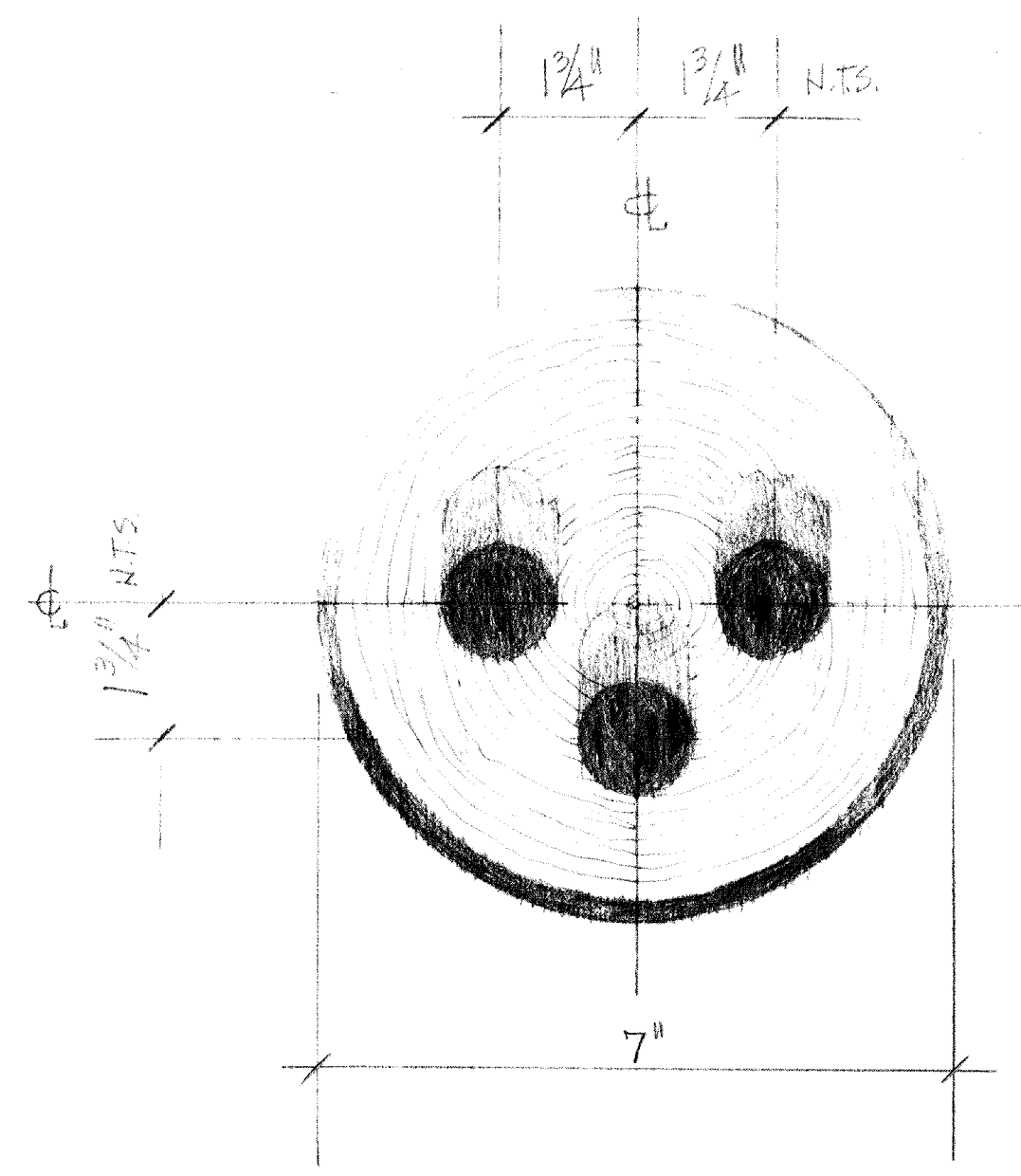
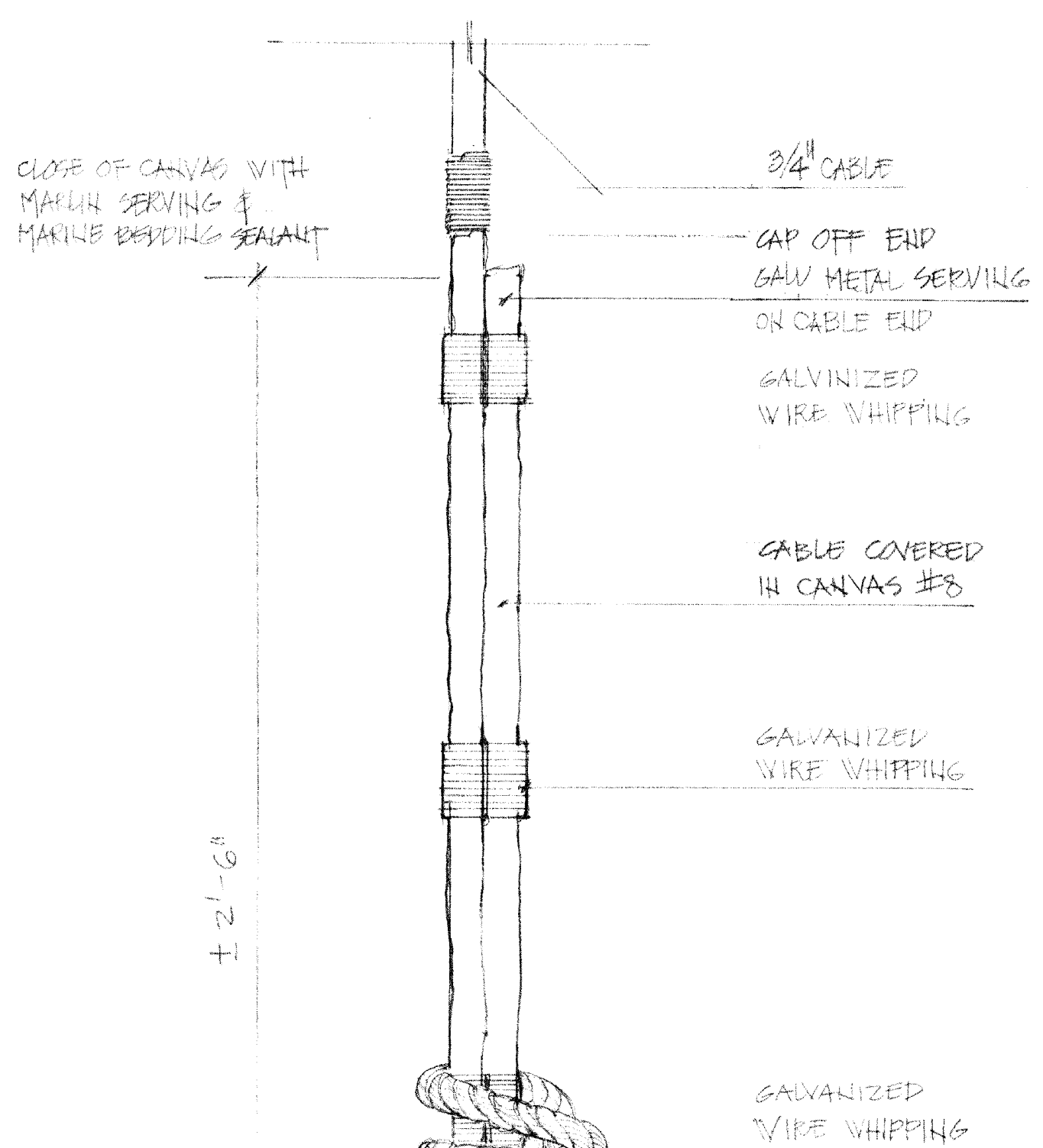
project title	titre du projet
SIGNAL MASTS	

drawing title	titre du dessin
DETAILS	

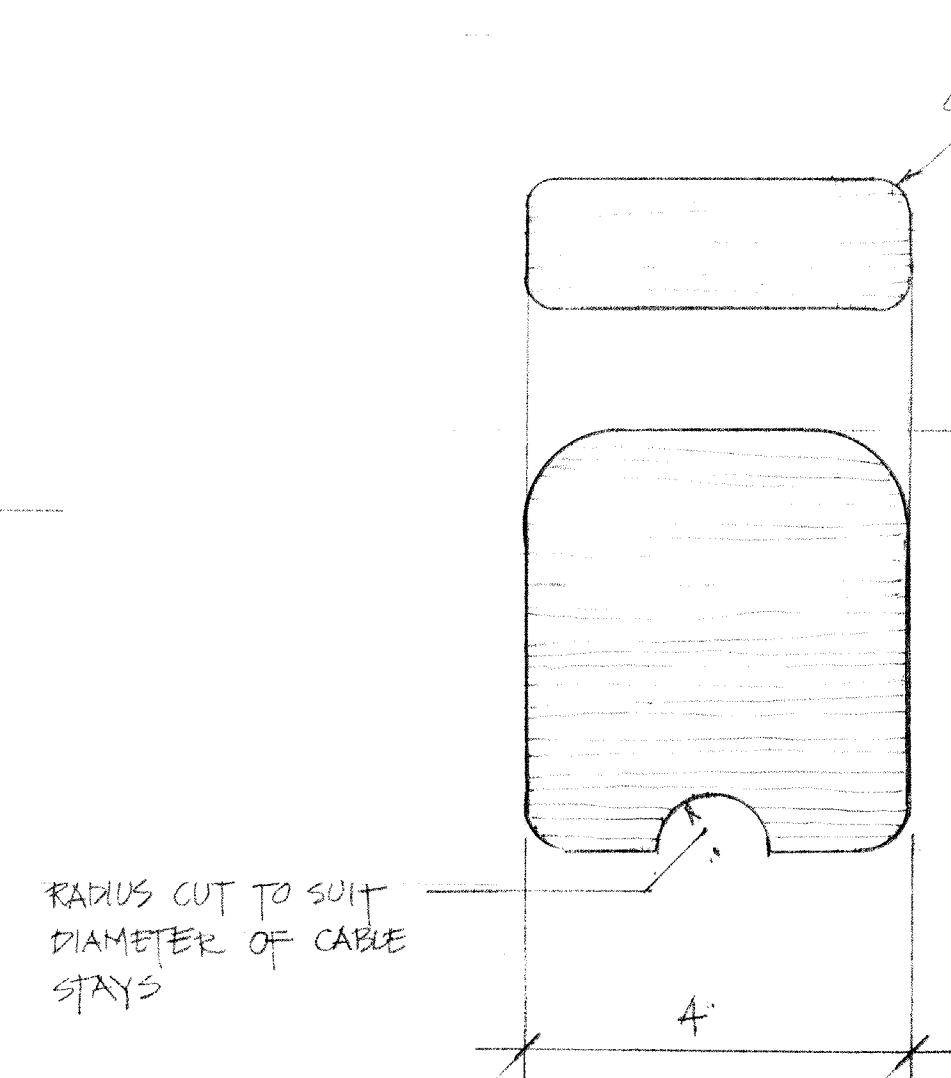
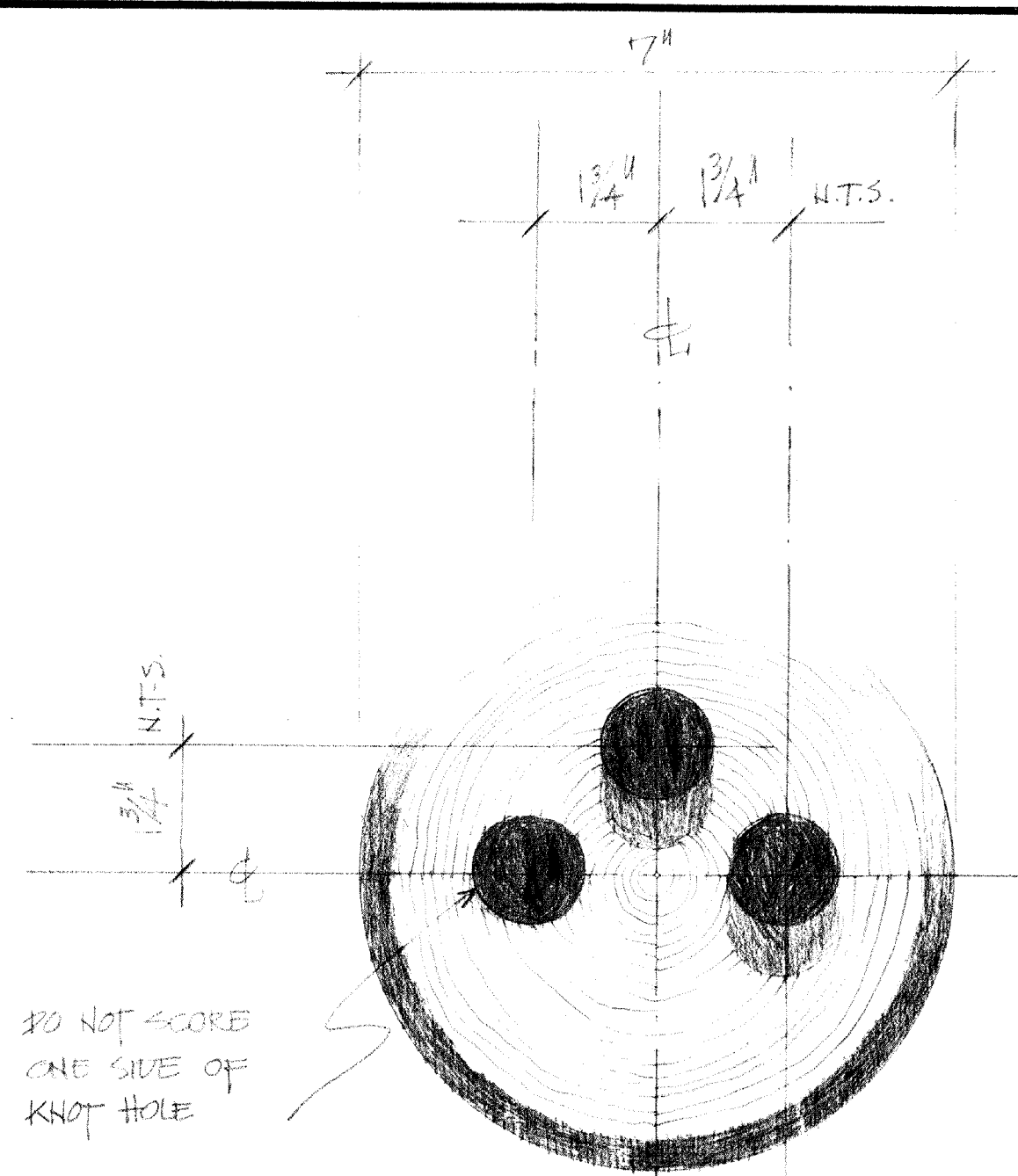
reference no. / no de référence	dwg no. / dessin no.
HAHC 80P8	12

HAHC 80P8
 SIGNAL MASTS HALIFAX DEFENCE COMPLEX RESTORATION CITEDEL ASSET NO. 0032
 DETAILS
 JANUARY 29 1982

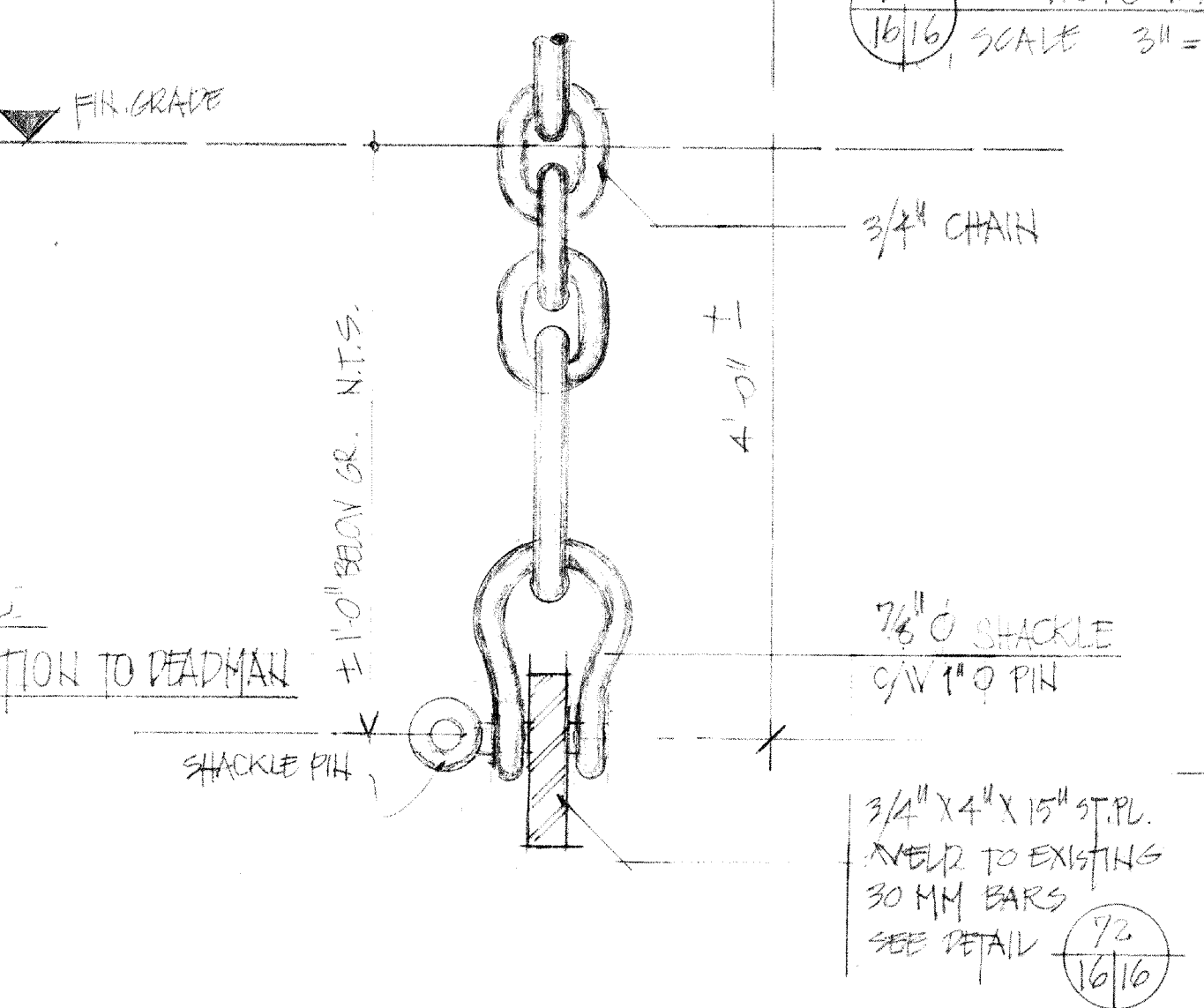
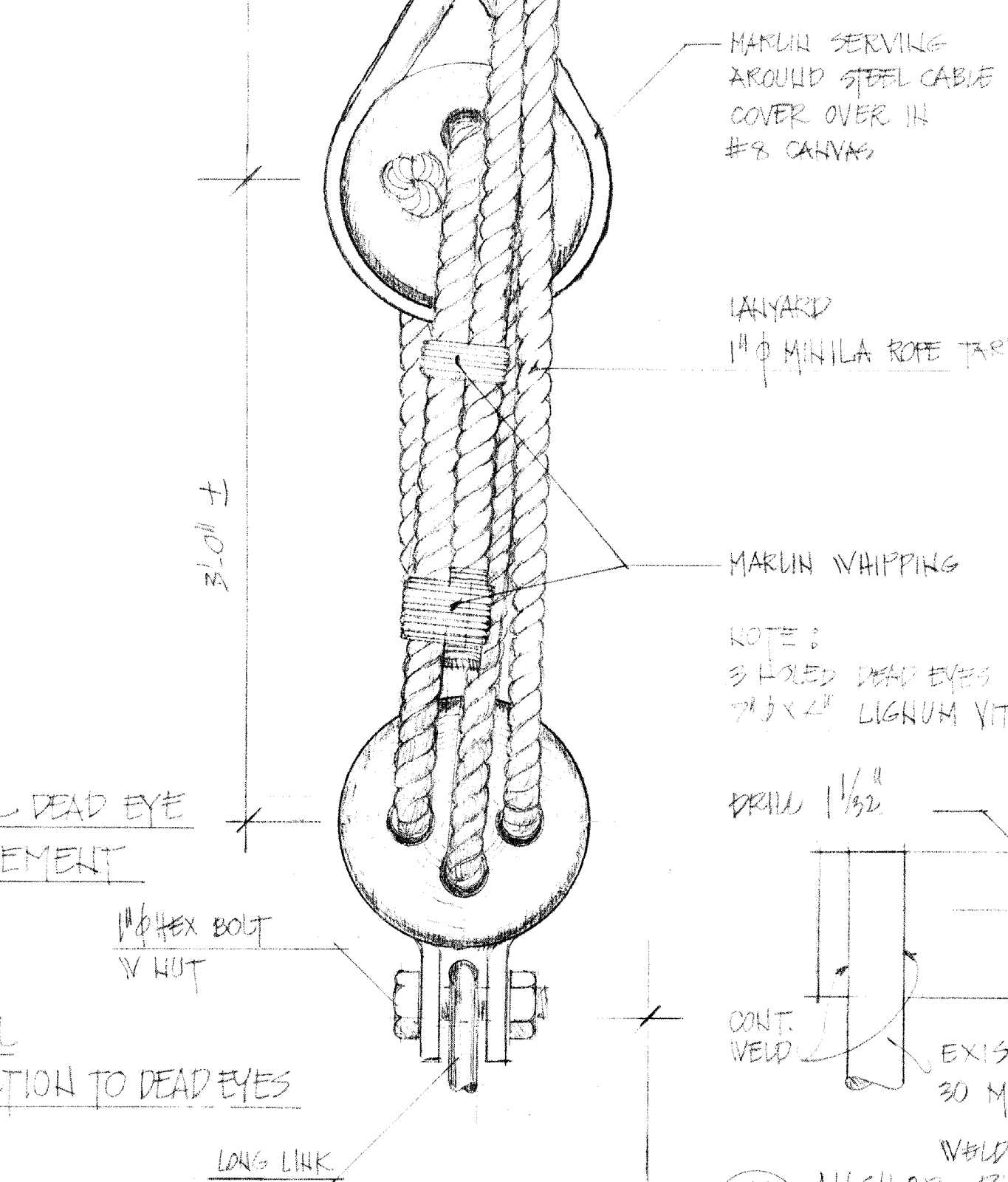
REFERENCE SOURCE FOR SHAPE OF DEAD EYES:
THE DEAD EYE HOW IT WAS MADE IN
UNENBESK NOVA SCOTIA BY JOHN M. KITCHES,
PUBLISHED BY THE MARINE HISTORICAL ASSOCIATION,
INGERSOLLEATED MYSIC, CONNECTICUT 1970



LOWER THREE HOLED DEAD EYE FOR 1\"/>

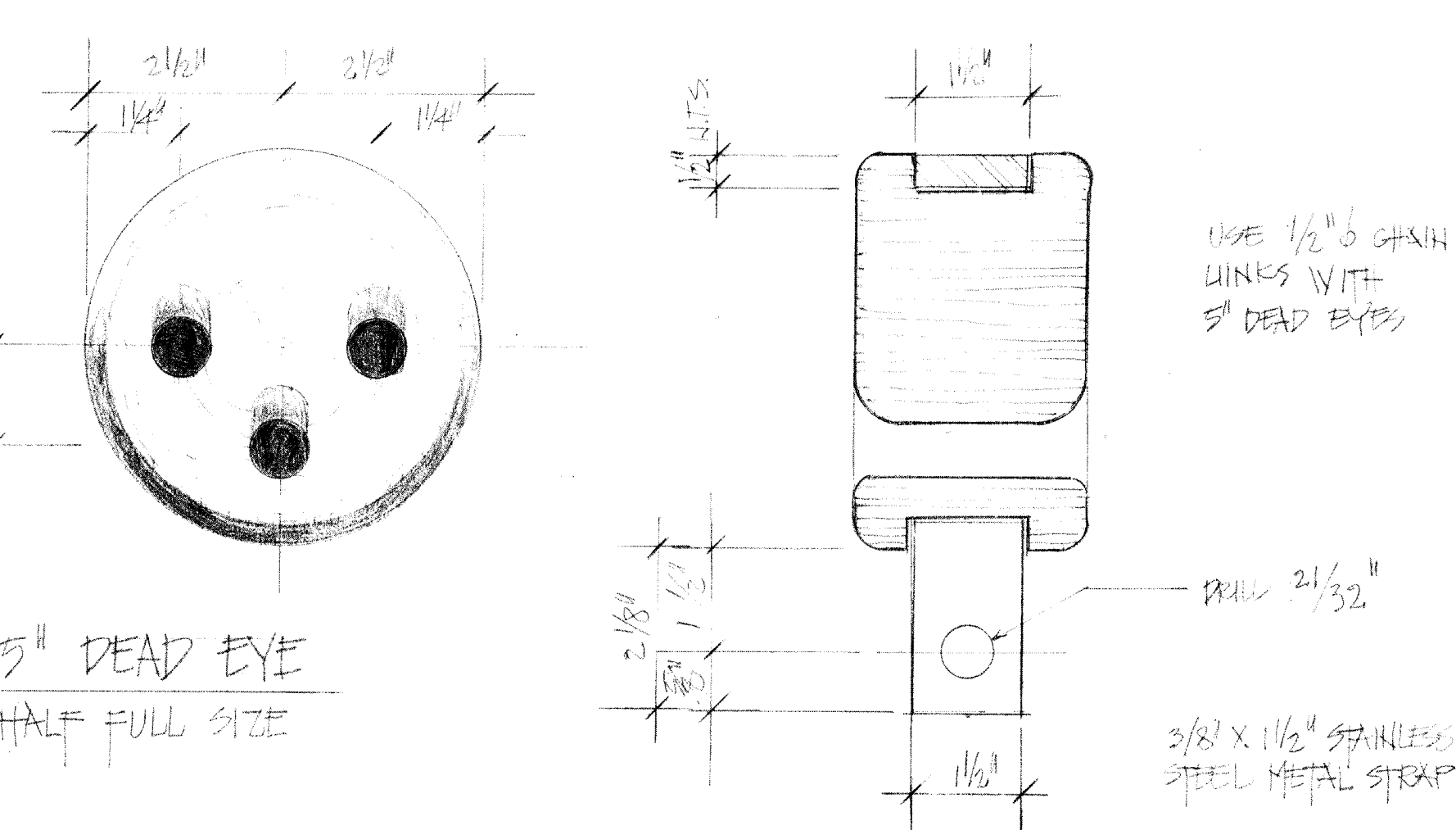


TOP THREE HOLED DEAD EYE FOR 1\"/>



MAINSTAY RIGGING DETAILS ~ TYPICAL
SCALE 3\"/>

- OUTLINE FINISH SCHEDULE**
- SPARS: PAINT ONE COAT MARINE PRIMER & TWO COATS WHITE MARINE ENAMEL
 - FINRAIL (SIGNAL MAST): MARINE TYPE SPAR VARNISH (TIBBETTS OR EQUAL)
 - FINRAIL (TELEGRAPH MAST): PAINT ONE COAT MARINE PRIMER & TWO COAT WHITE MARINE ENAMEL
 - PLATFORM: BASE PORCH ENAMEL COLOUR (C.S.S. 521-109)
 - SIGNAL MAST: PAINT ONE COAT MARINE PRIMER & TWO COATS WHITE MARINE ENAMEL
 - TELEGRAPH MAST: SAME FINISH AS ABOVE
 - ALL HARDWARE: JAPANNED BLACK UNLESS OTHERWISE NOTED
 - ALL CABLE STAYS: GALVANIZED CABLES, TARRIED STOCKHOLM TAR OR EQUAL
 - ALL MANILA ROPES: TARRIED, STOCKHOLM TAR OR EQUAL
 - SHACKLES: GALVANIZED & TARRIED, STOCKHOLM TAR OR EQUAL
 - CHAIN: TARRIED, STOCKHOLM TAR OR EQUAL
 - CANVAS BOOT: TARRIED, STOCKHOLM TAR OR EQUAL
- NOTE: ALL FLAG & SIGNAL HALLWAYS SHALL BE STITCHED WITH A 7/8\"/>



DEAD-EYE LIST		QTY REQUIRED	QTY REQUIRED	TOTAL	NOTES:
DEAD-EYES - LOWER MAST STAYS		7\"/>			
DEAD-EYES - TOP MAST STAYS		5\"/>			
NOTE: ALL MANILA ROPES ARE TARRIED (STOCKHOLM TAR OR APPROVED EQUAL)					
SIGNAL MAST ~ ROPE LIST		QTY REQUIRED	QTY REQUIRED	TOTAL	NOTES:
LOCATION NO	ROPE NAME/LOCATION	ROPE DIA	TYPE	LENGTH (FEET)	REMARKS
1, 2	PEAK HALYARD	1 1/2\"/>			
3, 4	TOP YARD LIFTS	1 1/2\"/>			
5, 6, 7, 8	TOP YARD FLAG HALYARDS	1 1/2\"/>			
9, 10, 11, 12	TOP YARD FLAG HALYARDS	1 1/2\"/>			
13	TOP YARD SLING	1 1/2\"/>			
14	TOP MAST SHEAVE SLING	7/8\"/>			
15 & 16	MAIN YARD LIFTS	5/8\"/>			
17 & 18	MAIN YARD SLINGS	5/8\"/>			
19	ROPE HOISTING LINE	1 1/2\"/>			
20	BOOM CHAIN LINE	7/8\"/>			
NOTE: ALL MANILA ROPES ARE TARRIED (STOCKHOLM TAR OR APPROVED EQUAL)					
TELEGRAPH MAST ~ ROPE LIST		QTY REQUIRED	QTY REQUIRED	TOTAL	NOTES:
LOCATION NO	ROPE NAME/LOCATION	ROPE DIA	TYPE	LENGTH (FEET)	REMARKS
1, 2	PEAK HALYARDS	1 1/2\"/>			
3	TOP MAST SLING	5/8\"/>			
4 & 5	YARD LIFTS	5/8\"/>			
6, 7	YARD SLINGS	5/8\"/>			
8, 9, 10, 11	YARD FLAG HALYARDS	1 1/2\"/>			
12	ROPE HOISTING LINE	1 1/2\"/>			
NOTE: ALL MANILA ROPES ARE TARRIED (STOCKHOLM TAR OR APPROVED EQUAL)					
SIGNAL MAST & TELEGRAPH MAST ~ BLOCK LIST		QTY REQUIRED	QTY REQUIRED	TOTAL	NOTES:
LOCATION	BLOCK NAME / LOCATION	ROPE DIA	SHEAVE DIA	QTY REQUIRED	REMARKS
A & B	MAST HEAD FLAG HALYARD BLOCKS	1 1/2\"/>			
C & D	TOP YARD LIFT BLOCKS	1 1/2\"/>			
E, F, G & H	TOP YARD FLAG HALYARD BLOCKS	1 1/2\"/>			
I, J, K, L	TOP YARD FLAG HALYARD BLOCKS	1 1/2\"/>			
M	TOP YARD SLING BLOCK	1 1/2\"/>			
N	TOP MAST SLING BLOCK	7/8\"/>			
O & P	MAIN YARD SLING BLOCKS	5/8\"/>			
Q & R	MAIN YARD (MAST) LIFT BLOCKS	5/8\"/>			
S & T	MAIN YARD (MAST) LIFT BLOCKS	5/8\"/>			
U, V, X, Y, Z	MAIN YARD FLAG HALYARD BLOCKS	1 1/2\"/>			
	TOP MAST SLING SHEAVE (T-MAST)	7/8\"/>			
	TOP MAST SLING SHEAVE (T-MAST)	7/8\"/>			
	BOOM CHAIN BLOCK	7/8\"/>			

revision table with columns for revision number and date.

drawn by / tracé par: G.A. FELLERHOFF
scale / échelle: AS NOTED
checked by / vérifié par: G.A. FELLERHOFF
drawing title: SIGNAL MASTS
drawing no.: HATC 80/P8
dwg no.: 16

