

SINGLE LINE DIAGRAM
SCALE: N.T.S

GENERAL NOTES:

- ① ALL ELECTRICAL EQUIPMENT SHOWN IN THIN SOLID LINES IS EXISTING TO REMAIN.
- ② ALL ELECTRICAL EQUIPMENT SHOWN IN THICK SOLID LINES IS NEW TO BE PROVIDED UNDER THIS CONTRACT, TOGETHER WITH ALL ASSOCIATED CONDUITS AND WIRING.
- ③ ALL ELECTRICAL EQUIPMENT SHOWN IN THICK DASHED LINES WITH LETTER 'R' IS EXISTING TO BE RELOCATED AS SHOWN. EXTEND ALL CONDUITS AND WIRING TO SUIT.
- ④ ALL ELECTRICAL EQUIPMENT SHOWN IN THICK DASHED LINES WITH LETTER 'X' IS EXISTING TO BE REMOVED C/W ALL CONDUIT, WIRING AND ASSOCIATED HARDWARE BACK TO NEAREST J/B.
- ⑤ FOR ANY REQUIRED SHUT DOWN, CONTRACTOR TO COORDINATE WITH SITE MANAGER AND OBTAIN APPROVAL BEFORE SHUT DOWN CAN BE PERFORMED.
- ⑥ EXISTING FIRE ALARM SYSTEM TO REMAIN OPERATIONAL FOR DURATION OF THIS PROJECT. PROVIDE DUST PROTECTION. PROVIDE FIRE WATCH IF REQUIRED. EXISTING FIRE ALARM PROVIDER IS CHUBB EDWARDS.
- ⑦ PROVIDE NEW BREAKERS AS REQUIRED IN EXISTING ELECTRICAL PANELS TO ACCOMMODATE NEW CONNECTIONS. ALSO PROVIDE BLANK PLATES WHERE CIRCUIT BREAKERS ARE NOT INSTALLED. PROVIDE NEW TYPED PANEL LEGEND TYPICAL FOR ALL PANELS TOUCHED BY THIS CONTRACT. TURN OVER TO THE OWNER ALL BREAKERS REMOVED UNDER THIS CONTRACT.
- ⑧ ALL EXISTING AND NEW CONDUITS AND WIRING PASSING THRU FLOOR AND FIRE RATED WALLS TO BE FIRE STOP USING 3M FIRE RETARDANT MASTIC SEALANT NO EQUIVALENT.
- ⑨ ALL WIRING TO BE R/RW90, MINIMUM SIZE #12AWG COPPER, IN EMT CONDUIT UNLESS OTHERWISE NOTED.
- ⑩ ALL ELECTRICAL CIRCUITS ARE SHOWN FOR GROUPING PURPOSES ONLY, CONTRACTOR TO USE AVAILABLE CIRCUITS IN EXISTING ELECTRICAL PANELS. REUSE EXISTING AND/OR PROVIDE NEW ELECTRICAL BREAKERS AS REQUIRED.
- ⑪ REGROUP CIRCUITS AS REQUIRED.
- ⑫ COORDINATE ALL WORK WITH ARCHITECTURAL AND MECHANICAL CONTRACTORS.
- ⑬ THIS DRAWING WAS BASED ON PARTIAL SITE REVIEW ONLY, ALL EQUIPMENT, ACCESSORIES, SIZES, LOCATIONS AND DETAILS OF INSTALLATIONS TO BE CONFIRMED ON SITE.
- ⑭ SEISMIC RESTRAINT SYSTEM (SRS) - PROVIDE DESIGN, SUPPLY AND INSTALLATION OF COMPLETE SRS FOR ALL SYSTEMS, EQUIPMENT SPECIFIED FOR INSTALLATION ON THIS PROJECT AS PER ONTARIO BUILDING CODE LATEST EDITION. THIS INCLUDES ELECTRICAL LIGHT FIXTURES, TRANSFORMERS, MCC'S, UPS, DIESEL GENERATORS, FIRE PROTECTION, CONDUIT, COMMUNICATIONS, ELECTRICAL EQUIPMENT AND SYSTEMS, BOTH VIBRATION ISOLATED AND STATICALLY SUPPORTED.

ELECTRICAL LEGEND

ITEM	DESCRIPTION
	120 VOLT FLUORESCENT LIGHT FIXTURE T-BAR
	POT LIGHT
	SHATTER RESISTANT POT LIGHT
	EXIT LIGHT CEILING AND WALL MOUNTED
	120 VOLT SINGLE POLE TOGGLE SWITCH
	ELECTRICAL PANEL
	JUNCTION BOX
	FIRE ALARM SPEAKER
	FIRE ALARM PULL STATION
	FIRE ALARM SMOKE DETECTOR CEILING MOUNTED
	FIRE ALARM BELL
	DUPLEX RECEPTACLE WALL MOUNTED
	DUPLEX RECEPTACLE MOUNTED ABOVE COUNTER
	DATA/TELEPHONE OUTLET WALL MOUNTED
	BASE FEED FOR SYSTEM FURNITURE
	TELEPHONE OUTLET
	DATA OUTLET
	DISCONNECT SWITCH
	EMERGENCY - FLUORESCENT LIGHT FIXTURE
	15 AMP. 125 VOLT DUPLEX RECEPTACLE CONNECTED TO DEDICATED CIRCUIT
	NEMA L6-30R TWISTLOCK RECEPTACLE, 30A, 208V, CONNECTED TO DEDICATED CIRCUIT
	15 AMP. 125 VOLT DUPLEX RECEPTACLE DEDICATED CIRCUIT AND CEILING MOUNTED
	15 AMP. 125 VOLT GFI DUPLEX RECEPTACLE
	RECEPTACLE - TYPE AS INDICATED
	CEILING MOUNTED RECEPTACLE - TYPE AS INDICATED
	CARD READER
	DOOR BELL
	ELECTRIC STRIKE
	MOTION DETECTOR
	DOOR CONTACT
	PUSH BUTTON, DOOR OPERATOR
	THREE PHASE MOTOR
	SINGLE PHASE MOTOR
	DIRECT CONNECTION
	ELECTRICAL BASEBOARD HEATER
	COMMUNICATION PANEL
	CORE DRILL - PREFERRED LOCATION REFER TO ARCH. DWGS FOR DIMENSIONS

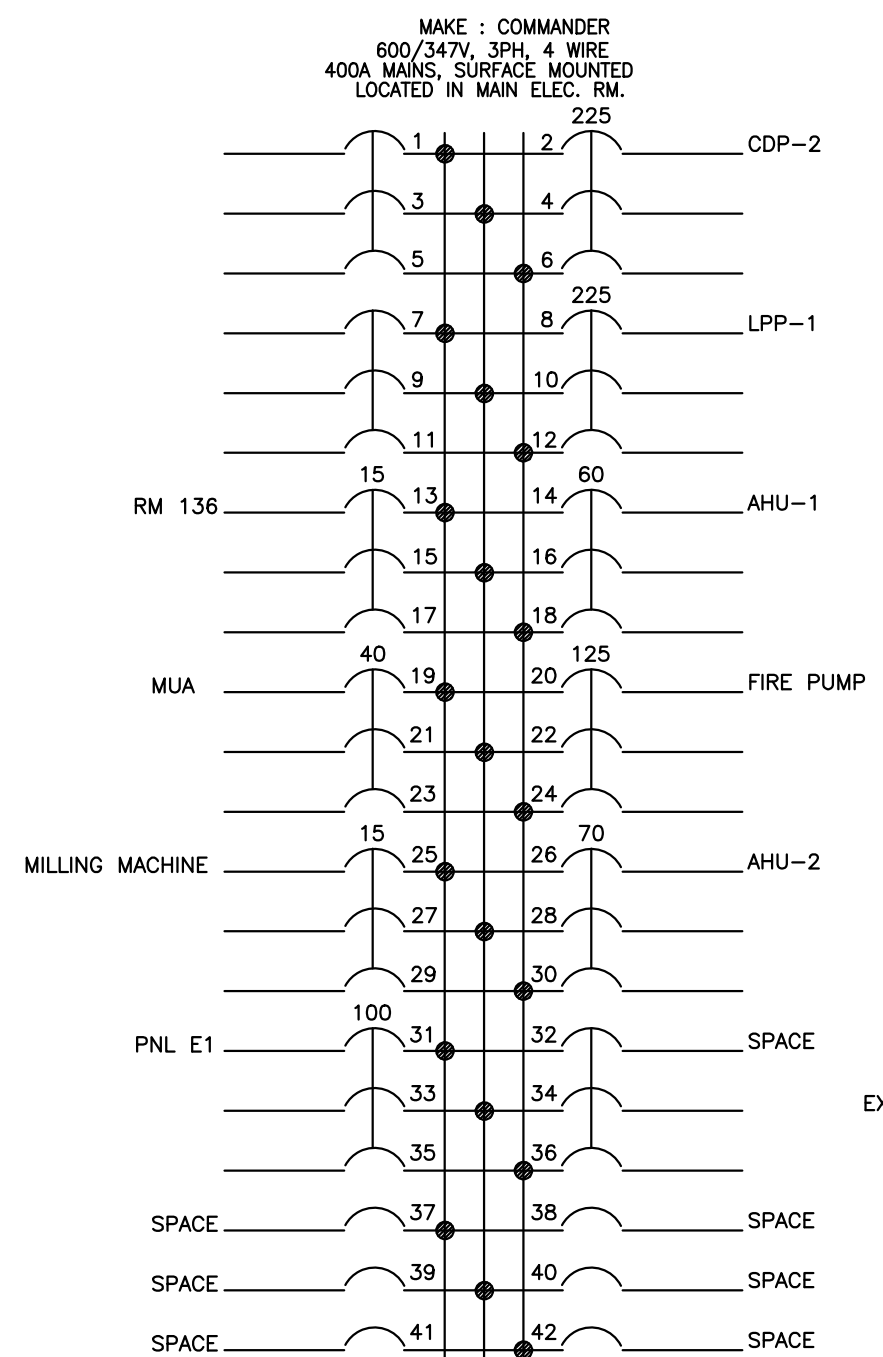
NOT ALL SYMBOLS SHOWN IN LEGEND SET ARE NECESSARILY USED IN DRAWING SET.

LIGHTING FIXTURE SCHEDULE

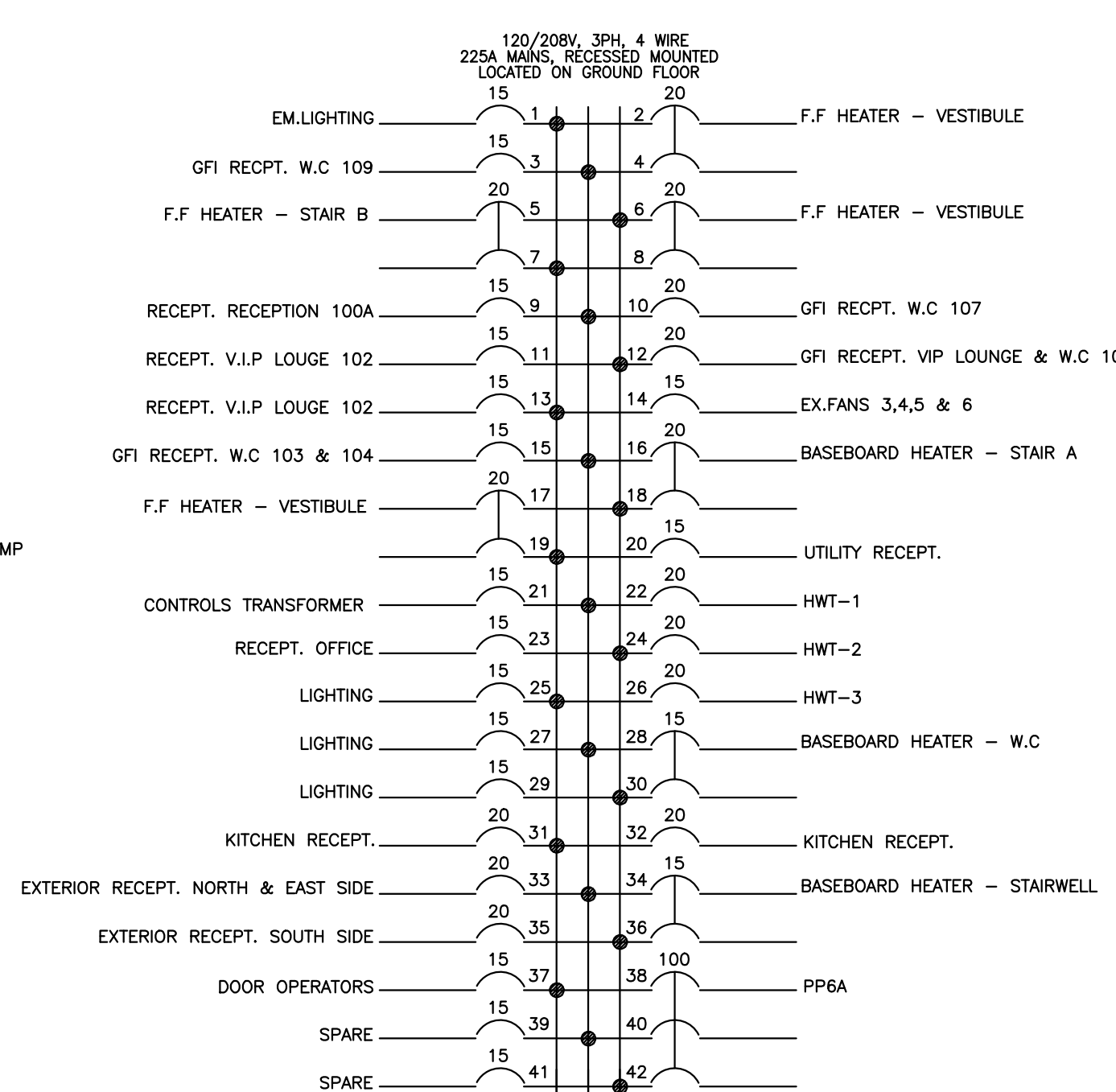
TYPE	DESCRIPTION	CATALOGUE NUMBER	LAMPS PER FIXTURE				VOLTS	TOTAL WATTS	MOUNTING	REMARKS	
			NO.	TYPE	WATTS	COLOUR					
A	1X4 Lay In	PEERLESS # LACH3-14G-32-35K-12-MV-D1	1	LED	34	3500'K	3200	120	34	TILE	
B	1X4 Surface	PEERLESS # LXHL-14-32-35K-12-MV-D1	1	LED	34	3500'K	3200	120	34	SURFACE	
C	2X4 Lay In	PEERLESS # LACH3-24G-40-35K-12-MV-D1	1	LED	40	3500'K	4000	120	40	TILE	
D	2X4 Lay In	PEERLESS # LACH3-24G-40-35K-12-MV-D1/FK24	1	LED	40	3500'K	4000	120	40	DRYWALL	
E	POTLIGHT	PRESCOLITE # LF6LEDG4-6FLED5G425KWT-B24	1	LED	14.5	3500'K	1100	120	14.5		
F	POTLIGHT VANDAL RESISTANT	PRESCOLITE # LF6LEDG4-6FLED5G435KVR-B24	1	LED	14.5	3500'K	1100	120	14.5		VANDAL RESISTANT
G	EXIT 1-Face	STANPRO # RMS1WH-NDC	1	LED	2			120	2	UNIVERSAL	RUNNING MAN
H	EXIT 2-Face	STANPRO # RMS2WH-NDC	1	LED	2			120	2	UNIVERSAL	RUNNING MAN

* OR APPROVED EQUIVALENTS *

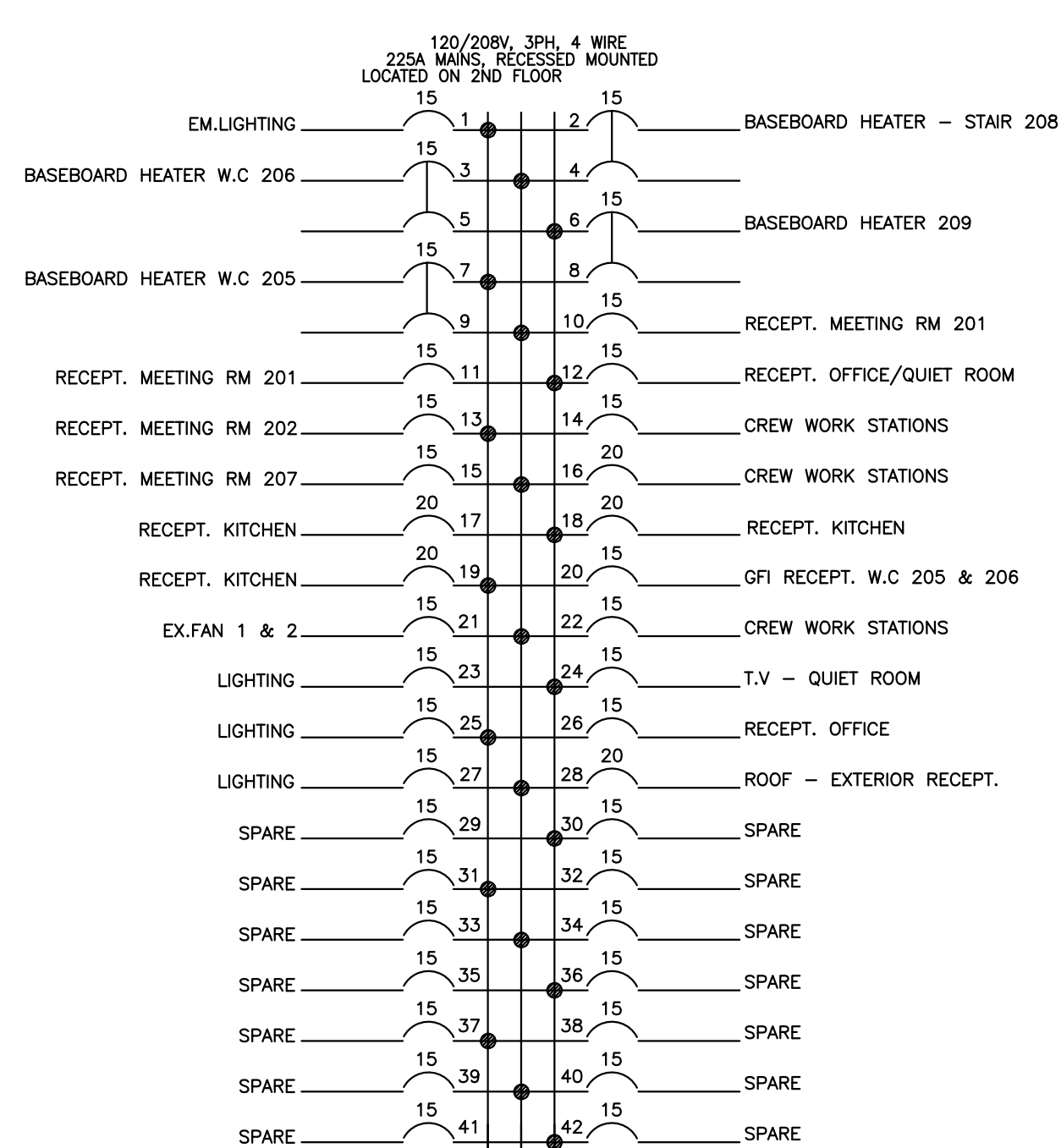
EXISTING PANEL 'CDP-1' SCHEDULE



NEW PANEL 'PP-6' SCHEDULE



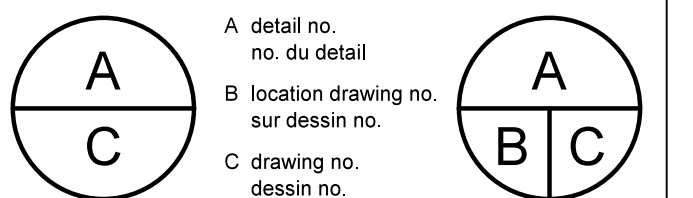
NEW PANEL 'PP-6A' SCHEDULE



Contractor to verify all dimensions & conditions on site and immediately notify the departmental representative of all discrepancies.

2	ISSUED FOR PERMIT	15.10.13
1	ISSUED FOR TENDER	15.10.05

revisions	description	date
-----------	-------------	------



project project

SAFETY ACCESS TO TARMAC

drawing dessin

ELECTRICAL - GENERAL NOTES, DETAILS & SCHEDULES

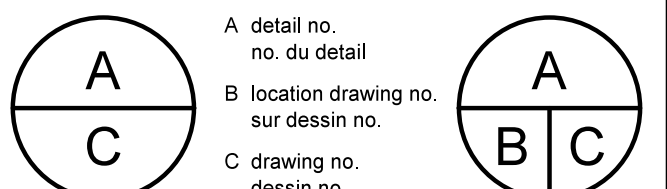
Designed By	Concu par
Date	(yyyy/mm/dd)
Drawn By	Dessine par
Date	(yyyy/mm/dd)
Reviewed By	Examine par
Date	(yyyy/mm/dd)
Approved By	Approuve par
Date	(yyyy/mm/dd)
Tender	Soumission
Project Manager	Departmental Representative Administrateur de projets
Project no.	No. du projet

PTS 3043

Drawing no. No. du dessin

Contractor to verify all dimensions & conditions on site and immediately notify the departmental representative of all discrepancies.

revisions	description	date
2	ISSUED FOR PERMIT	15.10.13
1	ISSUED FOR TENDER	15.10.05



project project

**SAFETY
ACCESS TO
TARMAC**

drawing dessin

**GROUND FLOOR PLAN
ELECTRICAL DISTRIBUTION**

Designed By	Concu par
Date	(yyyy/mm/dd)
Drawn By	Dessine par
Date	(yyyy/mm/dd)
Reviewed By	Examine par
Date	(yyyy/mm/dd)
Approved By	Approuve par
Date	(yyyy/mm/dd)
Tender	Soumission
2011/11	
Project Manager	Departmental Representative
	Administrateur de projets
Project no.	No. du projet

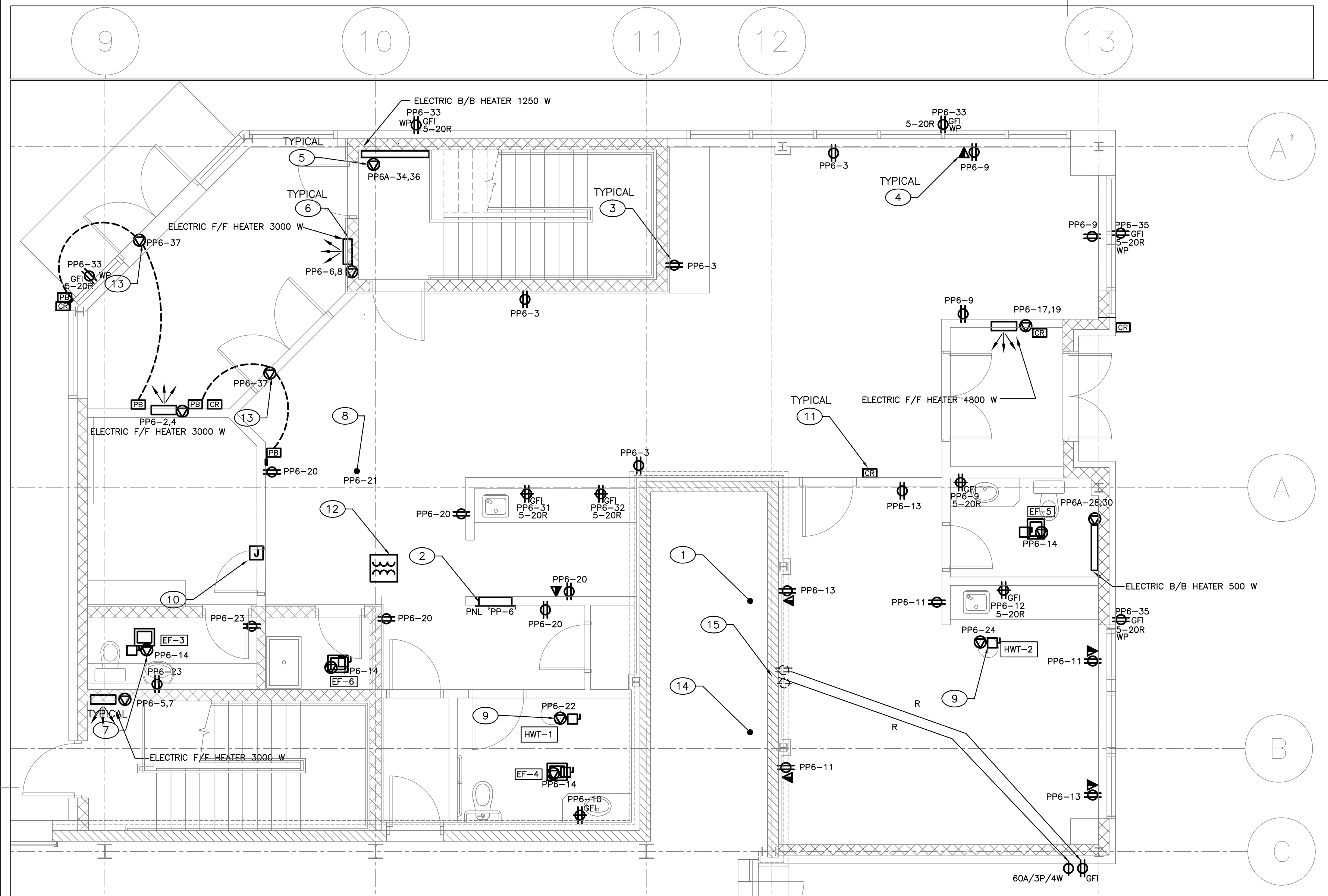
PTS 3043

Drawing no. No. du dessin

E-2 OF 7

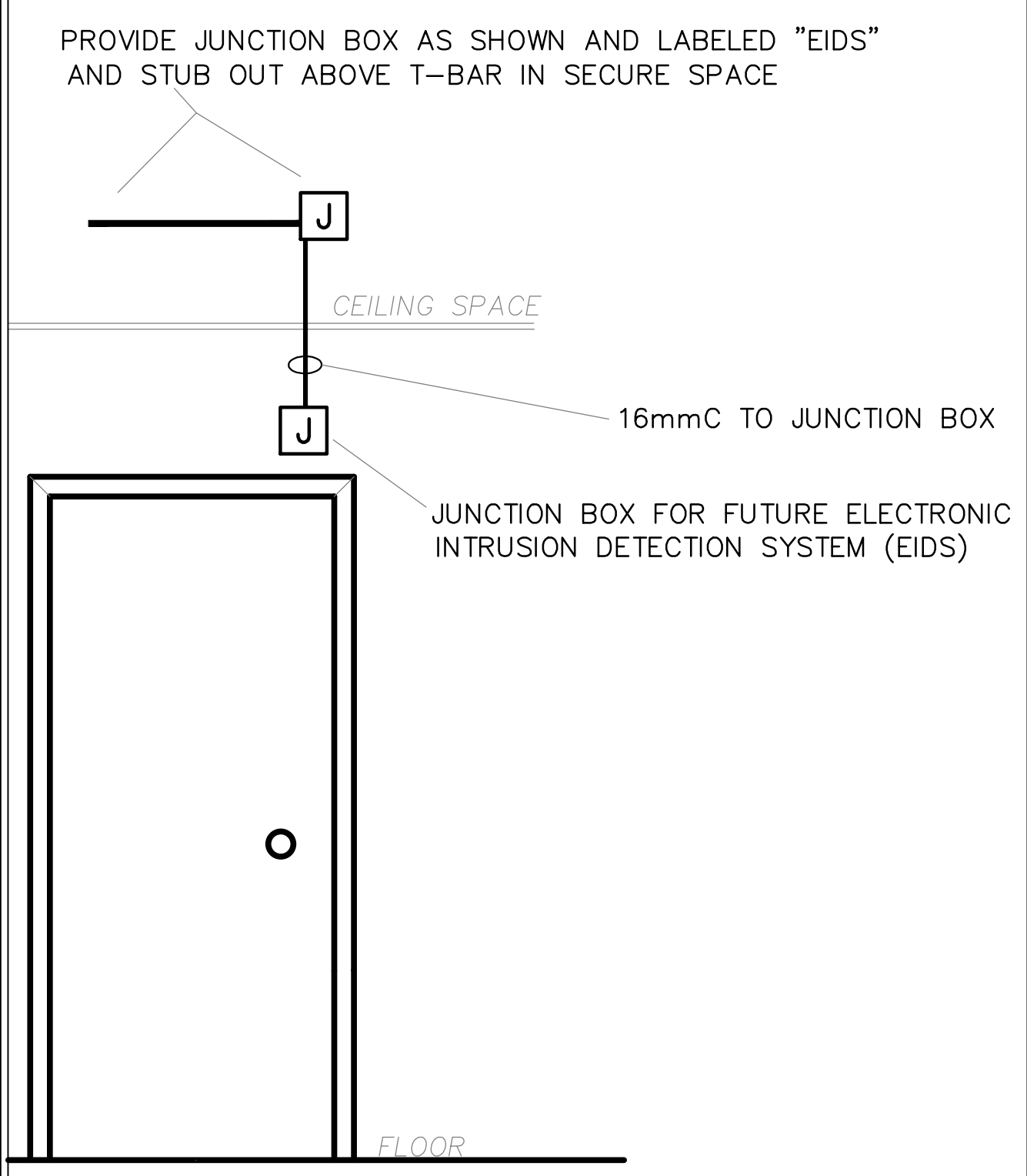
DRAWING NOTES:

- 1 PROVIDE NEW CDP BREAKER IN EXISTING PANEL CDP-1 C/W NEW FEED TO ADDITION. REFER TO SLD ON E1 FOR DETAILS.
- 2 PROVIDE NEW ELECTRICAL DISTRIBUTION AS PER SLD ON DRAWING E1 C/W ALL CONDUIT, WIRING AND ASSOCIATED HARDWARE.
- 3 PROVIDE DUPLEX RECEPTACLE, 5-15R UNLESS OTHERWISE INDICATED, C/W ALL CONDUIT, WIRING AND ASSOCIATED HARDWARE.
- 4 PROVIDE NEW DATA/VOICE OUTLET C/W 21mmC STUBBED OUT ABOVE T-BAR CEILING AND POLYPROPYLENE PULL STRING.
- 5 PROVIDE AND INSTALL ELECTRIC BASEBOARD HEATERS (SIZE AS INDICATED) C/W ALL CONDUIT, WIRING AND ASSOCIATED HARDWARE.
- 6 PROVIDE AND INSTALL ELECTRIC FORCE FLOW HEATERS (SIZE AS INDICATED) C/W BUILT IN THERMOSTAT, ALL CONDUIT, WIRING AND ASSOCIATED HARDWARE.
- 7 PROVIDE DIRECT CONNECTION TO NEW EXHAUST FAN C/W DISCONNECT SWITCH (TOGGLE) ALL CONDUIT, WIRING AND ASSOCIATED HARDWARE.
- 8 PROVIDE 50VA CONTROLS TRANSFORMER TO BE LOCATED IN CEILING SPACE. LOCATION TO BE COORDINATED WITH MECHANICAL CONTRACTOR.
- 9 PROVIDE DIRECT CONNECTION TO NEW HWT C/W DISCONNECT SWITCH (TOGGLE) ALL CONDUIT, WIRING AND ASSOCIATED HARDWARE.
- 10 PROVIDE ROUGH-IN FOR FUTURE ELECTRONIC INTRUSION DETECTION SYSTEM (EIDS) C/W ALL CONDUITS, JUNCTION BOXES AND ASSOCIATED HARDWARE AS PER TYPICAL DETAIL ON DRAWING E2.
- 11 PROVIDE ROUGH-IN FOR FUTURE CARD ACCESS C/W ALL CONDUITS, JUNCTION BOXES AND ASSOCIATED HARDWARE AS PER TYPICAL DETAIL ON DRAWING E2 FOR DOORS: 100, 101, 102, 103 & 104. REFER TO ARCHITECTURAL DRAWINGS FOR FURTHER DETAILS.
- 12 PROVIDE 75KVA TRANSFORMER. TRANSFORMER TO BE SUSPENDED ABOVE T-BAR CEILING, PROVIDE ALL REQUIRED SEISMIC RESTRAINTS AND TRANSFORMER SUPPORT SYSTEM C/W ALL CONDUIT, WIRING AND SUPPORTED HARDWARE. EXACT LOCATION TO BE DETERMINED ONSITE, LOCATE NEAR PANEL PP-6 IN CORRIDOR.
- 13 PROVIDE DIRECT CONNECTION TO NEW DOOR OPERATOR C/W DISCONNECT SWITCH (TOGGLE ON OPERATOR), ALL CONDUIT, INCLUDING CONDUITS FOR PUSH BUTTONS, ALL WIRING AND ASSOCIATED HARDWARE. OPERATORS TO BE INTERFACED WITH FIRE ALARM SYSTEM, POWER TO OPERATORS TO BE DISCONNECTED WHEN FIRE ALARM SYSTEM GOES INTO ALARM. REFER TO TYPICAL DETAIL ON DRAWING E2 FOR FURTHER DETAILS.
- 14 PROVIDE TEMPORARY POWER SERVICE DURING CONSTRUCTION, SUPPORTING CONSTRUCTION ACTIVITIES. PROVIDE TEMPORARY WEATHER PROOF ENCLOSURE, STEP DOWN TRANSFORMER, 120/208V PANEL AND TEMPORARY CIRCUITS FOR CONSTRUCTION PURPOSES. SOURCE POWER FROM NEW 100A, 3P BREAKER IN PANEL CDP-1.
- 15 EXISTING EXTERIOR RECEPTACLES TO BE RELOCATED AS SHOWN. EXTEND ALL CONDUIT AND WIRING TO SUIT.

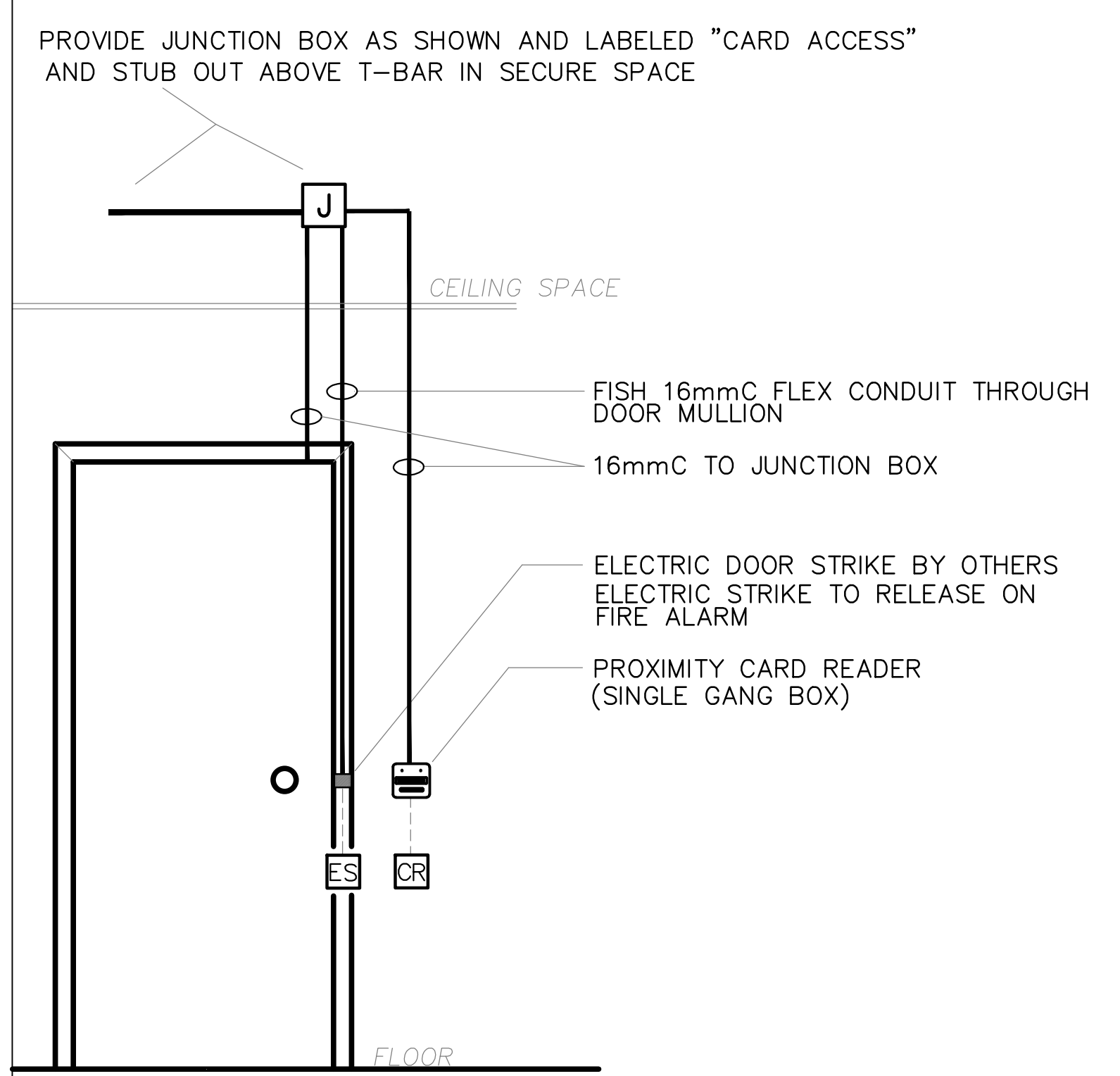


NEW ADDITION — GROUND FLOOR — ELECTRICAL DISTRIBUTION

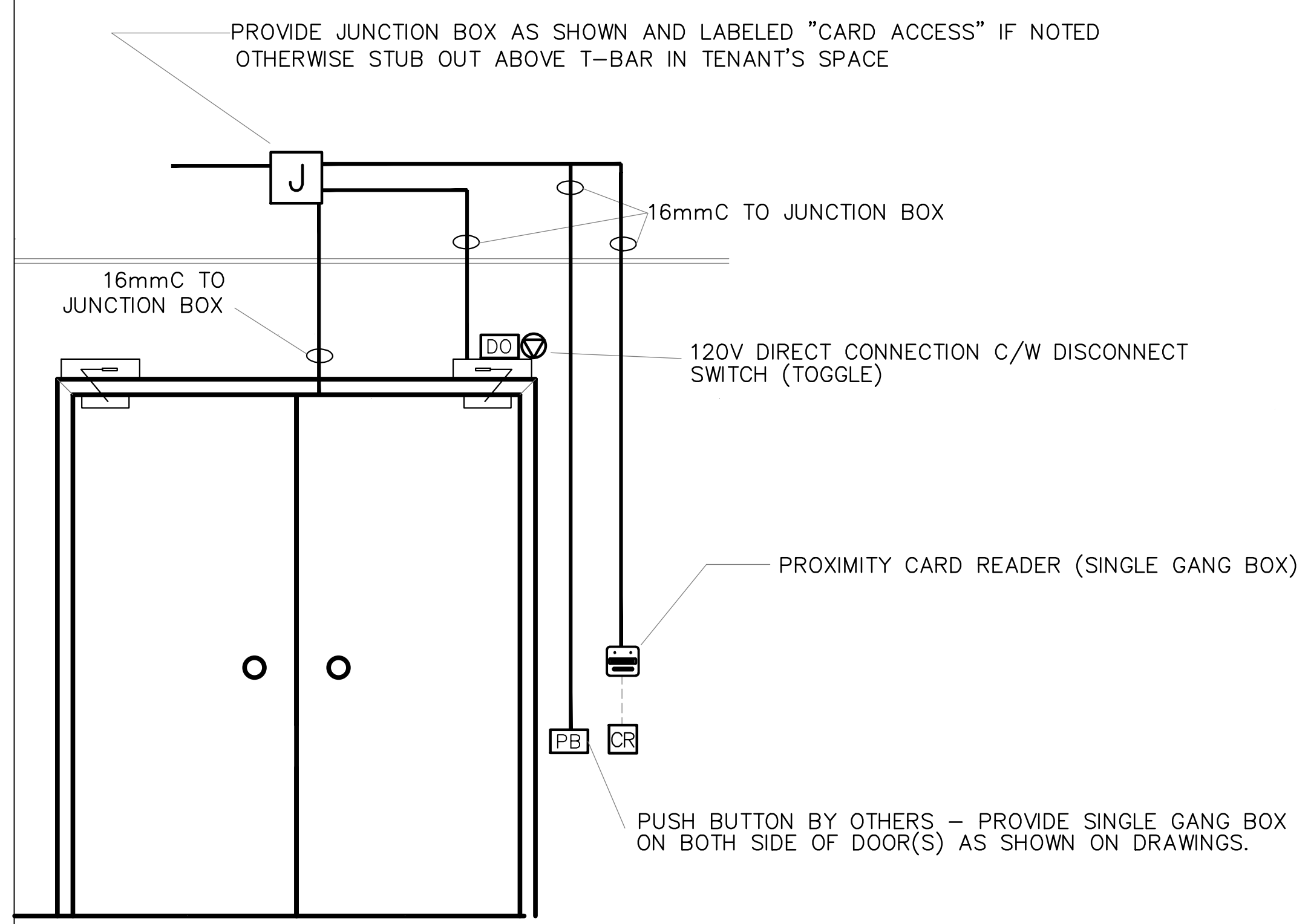
SCALE: 1:50.



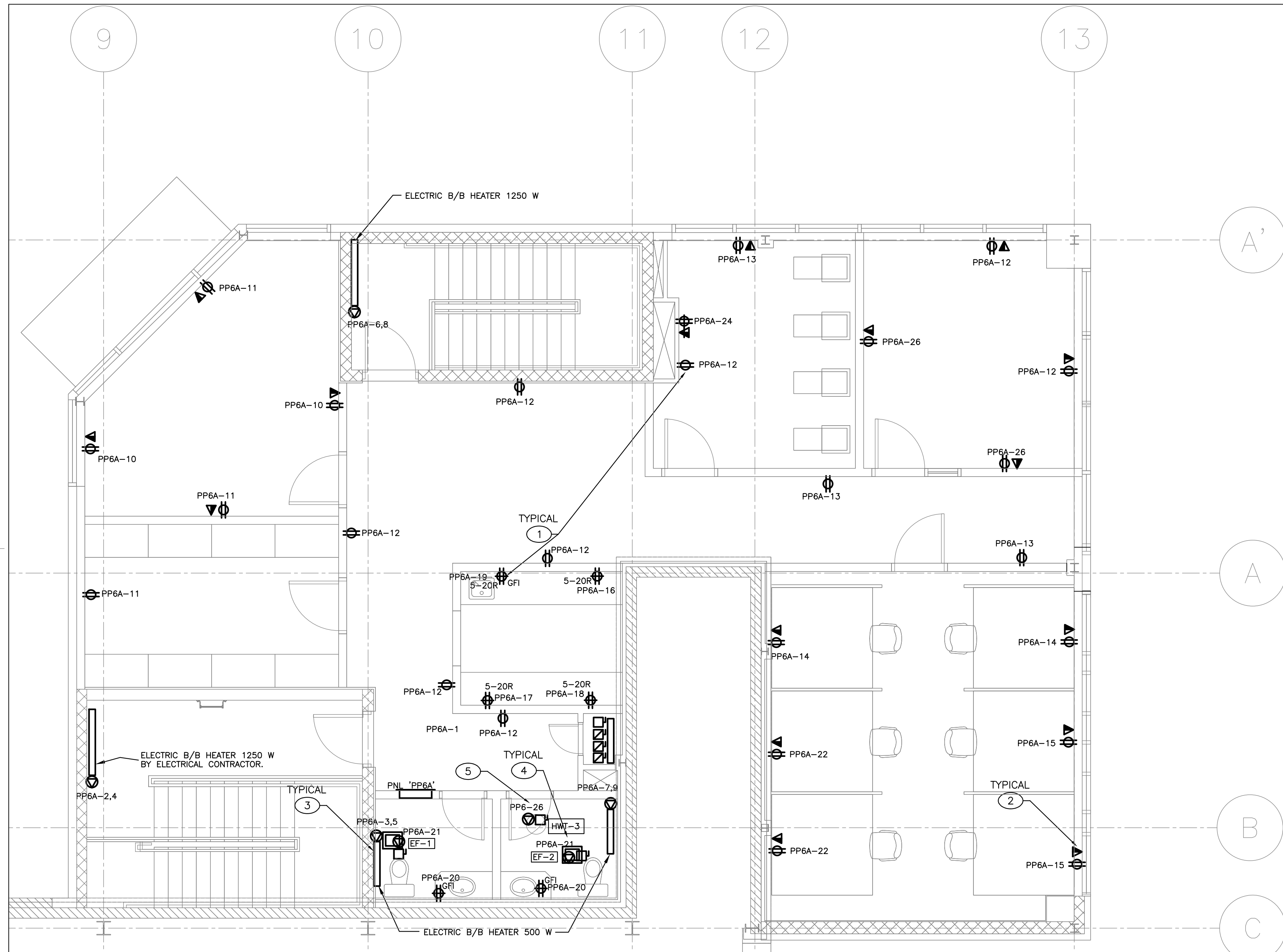
TYPICAL ELECTRONIC INTRUSION DETECTION SYSTEM DETAIL SCALE: NTS



TYPICAL SECURE DOOR DETAIL SCALE: NTS



TYPICAL SECURE DOOR WITH OPERATOR & PUSH BUTTON DETAIL SCALE: NTS



DRAWING NOTES:

- ① PROVIDE DUPLEX RECEPTACLE (5-15R) C/W ALL CONDUIT, WIRING AND ASSOCIATED HARDWARE.
- ② PROVIDE NEW DATA/VOICE OUTLET C/W 21mmC STUBBED OUT ABOVE T-BAR CEILING AND POLYPROPYLENE PULL STRING.
- ③ PROVIDE AND INSTALL ELECTRIC BASEBOARD HEATERS (SIZE AS INDICATED) C/W ALL CONDUIT, WIRING AND ASSOCIATED HARDWARE.
- ④ PROVIDE DIRECT CONNECTION TO NEW EXHAUST FAN C/W ALL CONDUIT, WIRING AND ASSOCIATED HARDWARE.
- ⑤ PROVIDE DIRECT CONNECTION TO NEW HWT C/W DISCONNECT SWITCH (TOGGLE) ALL CONDUIT, WIRING AND ASSOCIATED HARDWARE.

Contractor to verify all dimensions & conditions on site and immediately notify the departmental representative of all discrepancies.

2	ISSUED FOR PERMIT	15.10.13
1	ISSUED FOR TENDER	15.10.05

revisions	description	date
-----------	-------------	------

A C	A detail no. no. du detail	A C
B	B location drawing no. sur dessin no.	B C
C	C drawing no. dessin no.	C

project project

**SAFETY
ACCESS TO
TARMAC**

drawing dessin

**SECOND FLOOR PLAN
ELECTRICAL DISTRIBUTION**

Designed By	Concu par
Date	(yyyy/mm/dd)
Drawn By	Dessine par
Date	(yyyy/mm/dd)
Reviewed By	Examine par
Date	(yyyy/mm/dd)
Approved By	Approuve par
Date	(yyyy/mm/dd)
Tender	Soumission
2011/11	
Departmental Representative	
Project Manager	Administrateur de projets

Project no. No. du projet

PTS 3043

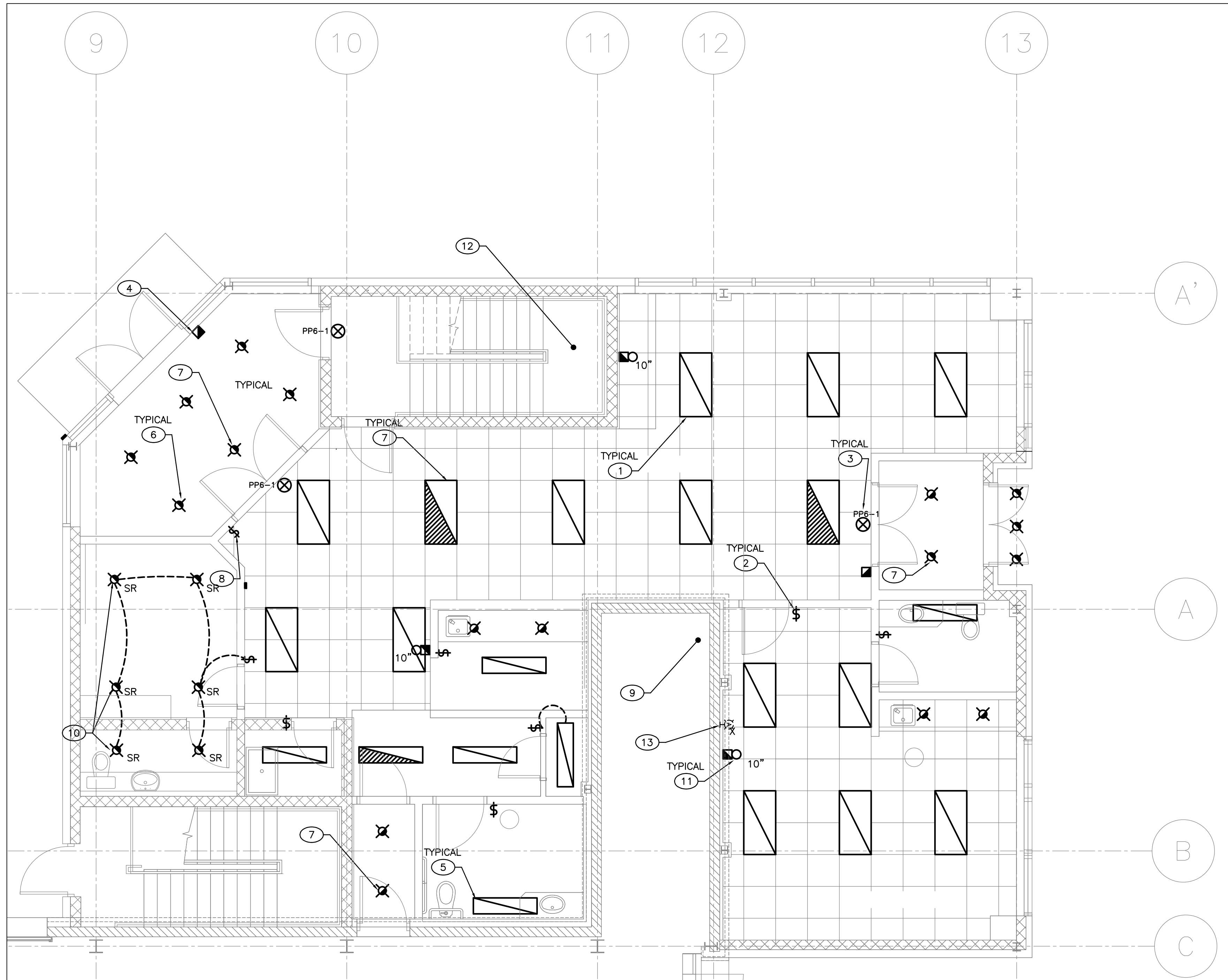
Drawing no. No. du dessin

E-3 OF 7

NEW ADDITION – SECOND FLOOR – ELECTRICAL DISTRIBUTION

SCALE: 1:50.

C



DRAWING NOTES:

- 1 PROVIDE NEW FLUORESCENT LIGHT FIXTURE C/W ALL CONDUIT WIRING AND ASSOCIATED HARDWARE. CONTROL AS INDICATED.
- 2 PROVIDE NEW LIGHTING CONTROL SWITCH, CONTROL ENTIRE ROOM UNLESS OTHERWISE INDICATED. PROVIDE ALL REQUIRED CONDUIT, WIRING AND ASSOCIATED HARDWARE.
- 3 PROVIDE NEW CEILING MOUNTED EXIT SIGN C/W DIRECTIONAL ARROWS AS INDICATED.
- 4 PROVIDE NEW F/A PULL STATION, TIE IN TO EXISTING BASE BUILDING FIRE ALARM SYSTEM C/W ALL CONDUIT, WIRING, ASSOCIATED HARDWARE AND F/A SYSTEM VERIFICATION. ALL COSTS AND CO-ORDINATION IS THE RESPONSIBILITY OF THE ELECTRICAL CONTRACTOR.
- 5 PROVIDE NEW SURFACE MOUNTED FLUORESCENT LIGHT FIXTURE C/W ALL CONDUIT, WIRING AND ASSOCIATED HARDWARE.
- 6 PROVIDE NEW POT LIGHT C/W ALL CONDUIT, WIRING AND ASSOCIATED HARDWARE.
- 7 EMERGENCY LIGHTING FIXTURE TO REMAIN UNSWITCHED AT ALL TIMES. TIE INTO EM. LIGHTING CIRCUIT.
- 8 PROVIDE MASTER LIGHTING CONTROL SWITCH. SWITCH TO CONTROL ALL GENERAL LIGHTING NOT CONTROLLED BY INDIVIDUAL ROOM LIGHTING CONTROL C/W CONTRACTOR, ALL CONDUIT, WIRING AND ASSOCIATED HARDWARE.
- 9 PROVIDE THREE (3) LIGHTING CIRCUITS, AS PER PANEL LEGEND C/W ALL CONDUIT, WIRING AND ASSOCIATED HARDWARE.
- 10 PROVIDE THREE (3) SHATTER RESISTANT TYPE POLYMER/POLYCARBONATE OR LAMINATED TEMPERED GLASS POT LIGHT FIXTURES THAT ARE SECURELY MOUNTED WITH PERMANENT FASTENERS (SCREWS).
- 11 TYPICAL OF THREE: PROVIDE NEW F/A BELL (10"). TIE IN TO EXISTING BASE BUILDING FIRE ALARM SYSTEM C/W ALL CONDUIT, WIRING, ASSOCIATED HARDWARE AND F/A SYSTEM VERIFICATION. ALL COSTS AND CO-ORDINATION IS THE RESPONSIBILITY OF THE ELECTRICAL CONTRACTOR.
- 12 ALL NEW FIRE ALARM DEVICES (LOOP) TO BE RUN BACK TO MAIN FIRE ALARM PANEL, LOCATED AT MAIN ENTRANCE OF EXISTING BUILDING. EXISTING FIRE ALARM PANEL IS ADDRESSABLE.
- 13 EXISTING LIGHT TO BE DISCONNECT AND REMOVED. REMOVE ALL CONDUIT AND WIRING BACK TO NEAREST J/B.

Contractor to verify all dimensions & conditions on site and immediately notify the departmental representative of all discrepancies.

revisions	description	date
2	ISSUED FOR PERMIT	15.10.13
1	ISSUED FOR TENDER	15.10.05

A C	A detail no. no. du detail	A B C
	B location drawing no. sur dessin no.	
	C drawing no. dessin no.	

project project

**SAFETY
ACCESS TO
TARMAC**

drawing dessin

**GROUND FLOOR PLAN
R.C.P**

Designed By	Concu par
Date	(yyyy/mm/dd)
Drawn By	Dessine par
Date	(yyyy/mm/dd)
Reviewed By	Examine par
Date	(yyyy/mm/dd)
Approved By	Approuve par
Date	(yyyy/mm/dd)
Tender	Soumission
2011/11	
Departmental Representative	Représentant départemental
Project Manager	Administrateur de projets
Project no.	No. du projet
PTS 3043	
Drawing no.	No. du dessin
E-4 OF 7	

NEW ADDITION – GROUND FLOOR – REFLECTED CEILING PLAN

SCALE: 1:50.

Contractor to verify all dimensions & conditions on site and immediately notify the departmental representative of all discrepancies.

revisions	description	date
2	ISSUED FOR PERMIT	15.10.13
1	ISSUED FOR TENDER	15.10.05

A C	A detail no. no. du detail	A C
B C	B location drawing no. sur dessin no.	B C
C C	C drawing no. dessin no.	C C

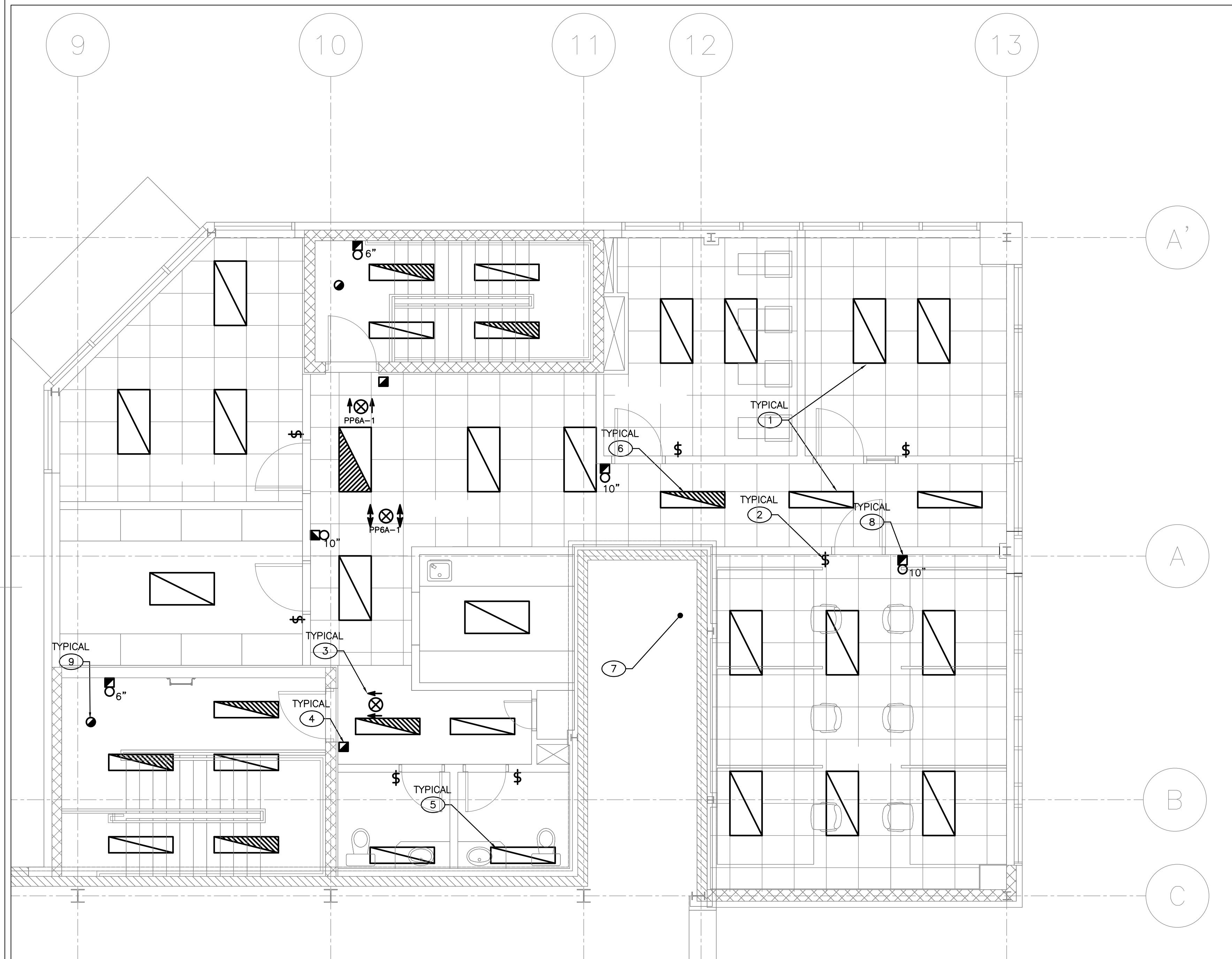
project project

**SAFETY
ACCESS TO
TARMAC**

drawing dessin

**SECOND FLOOR PLAN
R.C.P**

Designed By	Concu par
Date	(yyyy/mm/dd)
Drawn By	Dessine par
Date	(yyyy/mm/dd)
Reviewed By	Examine par
Date	(yyyy/mm/dd)
Approved By	Approuve par
Date	(yyyy/mm/dd)
Tender	Soumission
Project Manager	Departmental Representative Administrateur de projets
Project no.	No. du projet
PTS 3043	
Drawing no.	No. du dessin
E-5 OF 7	

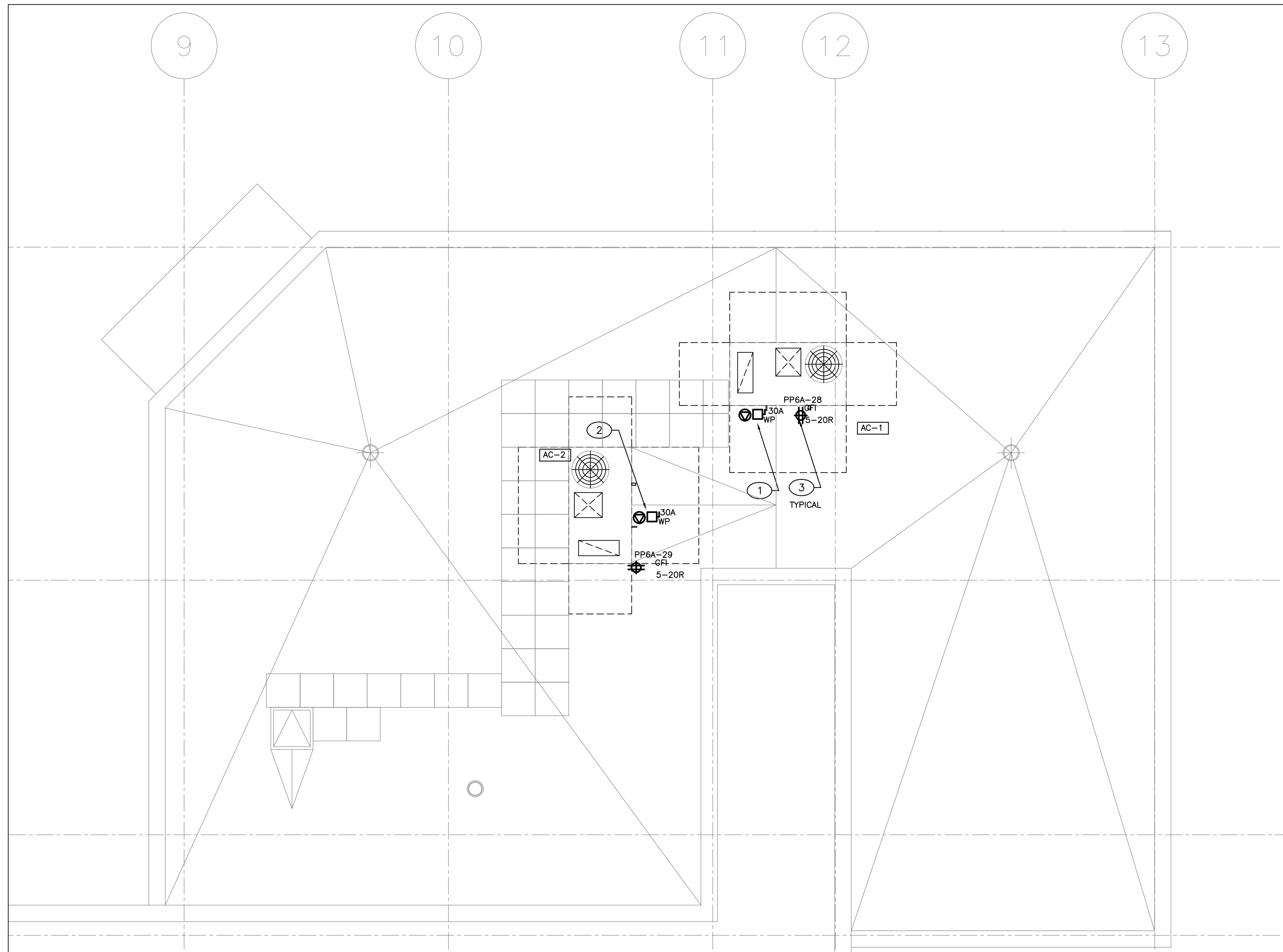


NEW ADDITION – SECOND FLOOR – REFLECTED CEILING PLAN

SCALE: 1:50.

DRAWING NOTES:

- 1 PROVIDE NEW FLUORESCENT LIGHT FIXTURE C/W ALL CONDUIT WIRING AND ASSOCIATED HARDWARE. CONTROL AS INDICATED.
- 2 PROVIDE NEW LIGHTING CONTROL SWITCH, CONTROL ENTIRE ROOM UNLESS OTHERWISE INDICATED. PROVIDE ALL REQUIRED CONDUIT, WIRING AND ASSOCIATED HARDWARE.
- 3 PROVIDE NEW CEILING MOUNTED EXIT SIGN C/W DIRECTIONAL ARROWS AS INDICATED.
- 4 PROVIDE NEW F/A PULL STATION, TIE IN TO EXISTING BASE BUILDING FIRE ALARM SYSTEM.
- 5 PROVIDE NEW SURFACE MOUNTED FLUORESCENT LIGHT FIXTURE C/W ALL CONDUIT, WIRING AND ASSOCIATED HARDWARE.
- 6 EMERGENCY LIGHTING FIXTURE TO REMAIN UNSWITCHED AT ALL TIMES. TIE INTO EM. LIGHTING CIRCUIT.
- 7 PROVIDE THREE (3) LIGHTING CIRCUITS, AS PER PANEL LEGEND C/W ALL CONDUIT, WIRING AND ASSOCIATED HARDWARE.
- 8 TYPICAL OF FIVE: PROVIDE NEW F/A BELL (SIZE AS INDICATED), TIE IN TO EXISTING BASE BUILDING FIRE ALARM SYSTEM C/W ALL CONDUIT, WIRING, ASSOCIATED HARDWARE ND F/A SYSTEM VERIFICATION. ALL COSTS ND CO-ORDINATION IS THE RESPONSIBILITY OF THE ELECTRICAL CONTRACTOR.
- 9 TYPICAL OF TWO: PROVIDE NEW SMOKE DETECTOR, TIE IN TO EXISTING BASE BUILDING FIRE ALARM SYSTEM C/W ALL CONDUIT, WIRING, ASSOCIATED HARDWARE ND F/A SYSTEM VERIFICATION. ALL COSTS ND CO-ORDINATION IS THE RESPONSIBILITY OF THE ELECTRICAL CONTRACTOR.



NEW ADDITION – ROOF PLAN

SCALE: 1:50.

DRAWING NOTES:

- ① PROVIDE WP DISCONNECT SWITCH AND DIRECT CONNECTION TO A/C #1 C/W ALL CONDUIT, WIRING AND ASSOCIATED HARDWARE.
- ② PROVIDE WEATHER PROOF DISCONNECT SWITCH AND DIRECT CONNECTION TO A/C #2 C/W ALL CONDUIT, WIRING AND ASSOCIATED HARDWARE.
- ③ PROVIDE DEDICATED GFI, 5-20R, DUPLEX RECEPTACLE, C/W ALL CONDUIT, WIRING AND ASSOCIATED HARDWARE. TRANSITION FROM EMT TO TECK 90 C/W LIQUID TIGHT CONNECTORS ON ROOF.

Contractor to verify all dimensions & conditions on site and immediately notify the departmental representative of all discrepancies.

2	ISSUED FOR PERMIT	15.10.13
1	ISSUED FOR TENDER	15.10.05

revisions	description	date
-----------	-------------	------

A C	A detail no. no. du detail	A B C
	B location drawing no. sur dessin no.	
	C drawing no. dessin no.	

project project

**SAFETY
ACCESS TO
TARMAC**

drawing dessin

ROOF PLAN

Designed By	Concu par
Date	(yyyy/mm/dd)
Drawn By	Dessine par
Date	(yyyy/mm/dd)
Reviewed By	Examine par
Date	(yyyy/mm/dd)
Approved By	Approuve par
Date	(yyyy/mm/dd)
Tender	Soumission
2011/11	
Project Manager	Departmental Representative Administrateur de projets

Project no. No. du projet

PTS 3043

Drawing no. No. du dessin

E-6 OF 7

C

Contractor to verify all dimensions & conditions on site and immediately notify the departmental representative of all discrepancies.

revisions	description	date
2	ISSUED FOR PERMIT	15.10.13
1	ISSUED FOR TENDER	15.10.05

revisions description date

A	A detail no. no. du detail	A
B	B location drawing no. sur dessin no.	B
C	C drawing no. dessin no.	C

project project

**SAFETY
ACCESS TO
TARMAC**

drawing dessin

ELECTRICAL ROUTE

Designed By Concu par

Date (yyyy/mm/dd)

Drawn By MG Dessine par

Date 2011/09 (yyyy/mm/dd)

Reviewed By MG Examine par

Date 2011/09 (yyyy/mm/dd)

Approved By Approuve par

Date (yyyy/mm/dd)

Tender 2011/11 Soumission

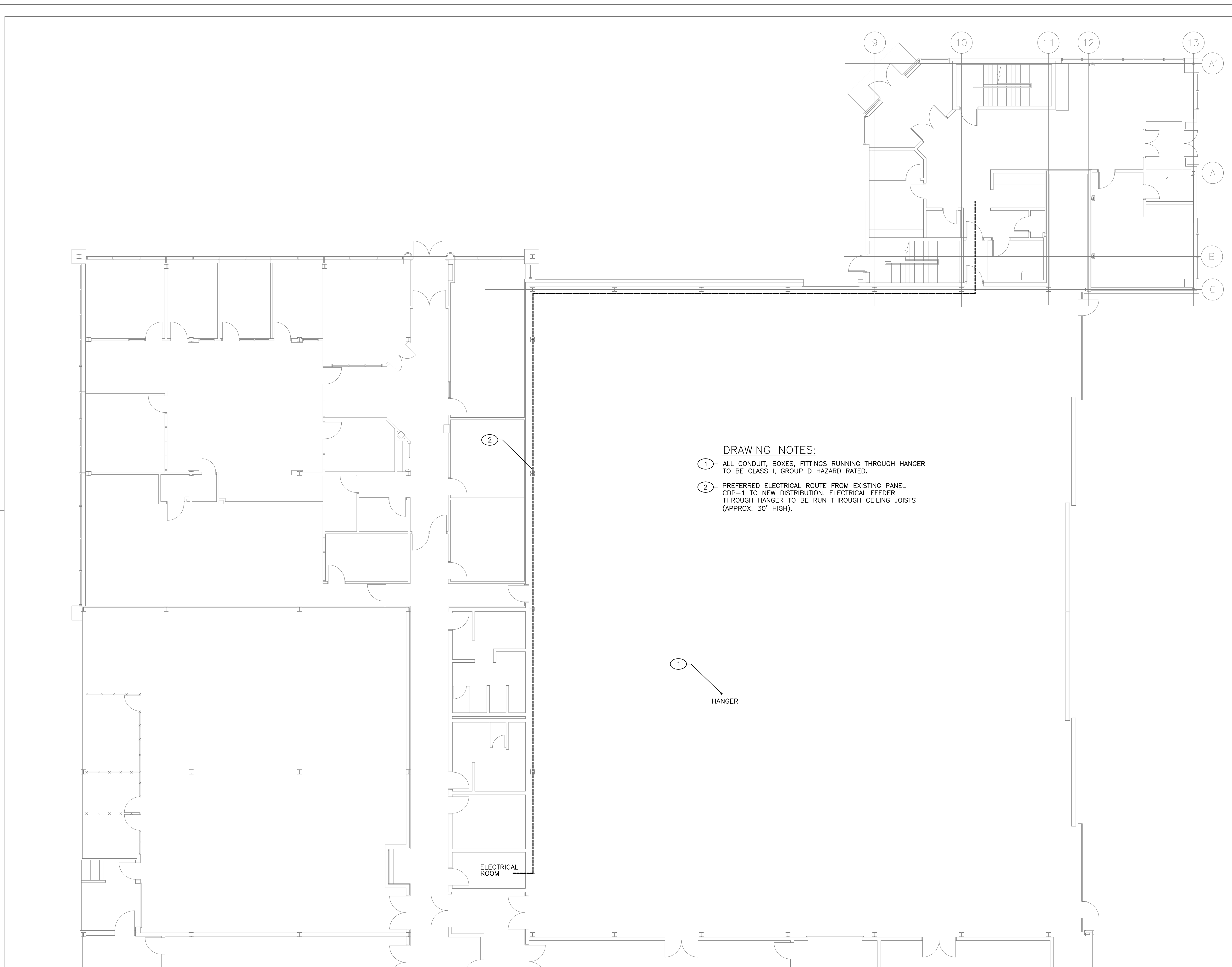
Project Manager Departmental Representative
Administrateur de projets

Project no. No. du projet

PTS 3043

Drawing no. No. du dessin

E-7 OF 7



DRAWING NOTES:

- ① ALL CONDUIT, BOXES, FITTINGS RUNNING THROUGH HANGER TO BE CLASS I, GROUP D HAZARD RATED.
- ② PREFERRED ELECTRICAL ROUTE FROM EXISTING PANEL CDP-1 TO NEW DISTRIBUTION. ELECTRICAL FEEDER THROUGH HANGER TO BE RUN THROUGH CEILING JOISTS (APPROX. 30" HIGH).

①
HANGER

ELECTRICAL ROOM

PARTIAL GROUND FLOOR PLAN

SCALE: 1:100

C

