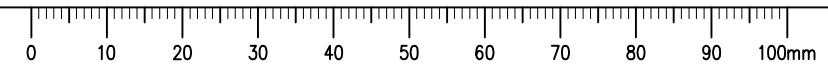


LEGEND:

PROPOSED	EXISTING	PROPOSED	EXISTING
SANITARY SEWER (SS)	SS	GRAVEL ROAD	(Pattern)
WATER (W)	W	CLEARING & GRUBBING	(Pattern)
PERF. DRAIN (D)	D	CONCRETE	(Pattern)
TELEPHONE (T)	T	GRASS SEEDING	(Pattern)
POWER (P)	P	DRAINAGE GRADING	(Pattern)
GAS (G)	G	TOP OF GROUND ELEV.	± 100.84
FENCE (X)	X	TOP OF CONCRETE ELEV.	± (100.84)
MAJOR CONTOUR	(Thick line)	TOP OF RETAINING WALL	± 100.84 RW
MINOR CONTOUR	(Thin line)		
SWALE	(Dashed line)		
SANITARY MANHOLE	(Circle with S)		
SANITARY CLEANOUT	(Circle with SC)		
FIRE HYDRANT	(Circle with FH)		
VALVE	(Circle with V)		
WATER PLUG	(Circle with WP)		
CULVERT	(Circle with CP)		

1 PLAN SCALE 1:200



- NOTES:**
- ALL DIMENSIONS IN METERS (m).
 - ALL ELEVATIONS ARE BASED OFF OF MERIDIAN SURVEYS PLAN SURVEYED JANUARY 27, 2015 AND JULY 7, 2015.
 - ALL ELEVATIONS SHOWN ARE TO FINISHED SURFACE.
 - ELEVATIONS SHOWN ON ROADWAYS OR PARKING LOTS ARE TOP OF GRAVEL ELEVATIONS.
 - ALL WATER MAINS TO BE A MINIMUM OF 3 m DEEP.
 - CONTRACTOR RESPONSIBLE TO CONFIRM LOCATION OF ALL EXISTING UNDERGROUND UTILITIES PRIOR TO CONSTRUCTION.
 - ALL TREES WITHIN 8.0 m OF BUILDING TO BE REMOVED.
 - PORTION OF EXISTING WATER SERVICE BEING REMOVED WILL BE CUT BACK AND CAPPED AT THE CONNECTION ON THE WATERMAIN.
 - ALL EXCAVATION FOR PIPING IN EXISTING GRAVEL ROAD WILL BE BACKFILLED, COMPACTED AND RETURNED TO EXISTING ELEVATIONS.

SEPW Architecture Inc.
 100-3725 Pelican Street, Regina, SK S4S 0A8 ph: (306) 569-2255
 102-3718 Kenebec Place, Saskatoon SK S7P 5A6 ph: (306) 654-6457
 website: www.sepw.ca

Associated Engineering
 1922 Park Street, Regina, Saskatchewan, S4N 7M4
 Ph: 306 721 2466 Fax: 306 721 2474
 www.ae.ca



ASSOCIATION OF PROFESSIONAL ENGINEERS AND GEOSCIENTISTS OF SASKATCHEWAN
 CERTIFICATE OF AUTHORIZATION
 ASSOCIATED ENGINEERING (SASK.) LTD.
 NUMBER C116
 PERMISSION TO CONSULT HELD BY:

DISCIPLINE: Municipal SASK. REG. No.: 09862 SIGNATURE: [Signature]

ASSOCIATED ENGINEERING QUALITY MANAGEMENT	QUALITY MANAGER	DATE	PROJECT CAD/LEAD	DATE
	Carina-Melanie	2015/01/27	[Signature]	2015/02/04

DO NOT SCALE DRAWINGS

Revision/Revision	Description/Description	Date/Date
0	ISSUED FOR TENDER	2015/02/04

Project title/Titre du projet

**NEW POLICE BUILDING
ONION LAKE, SASKATCHEWAN**

Approved by/Approve par
C. REESE

Designed by/Concept par
L. HASTINGS

Drawn by/Dessine par
J.S. YOUNG

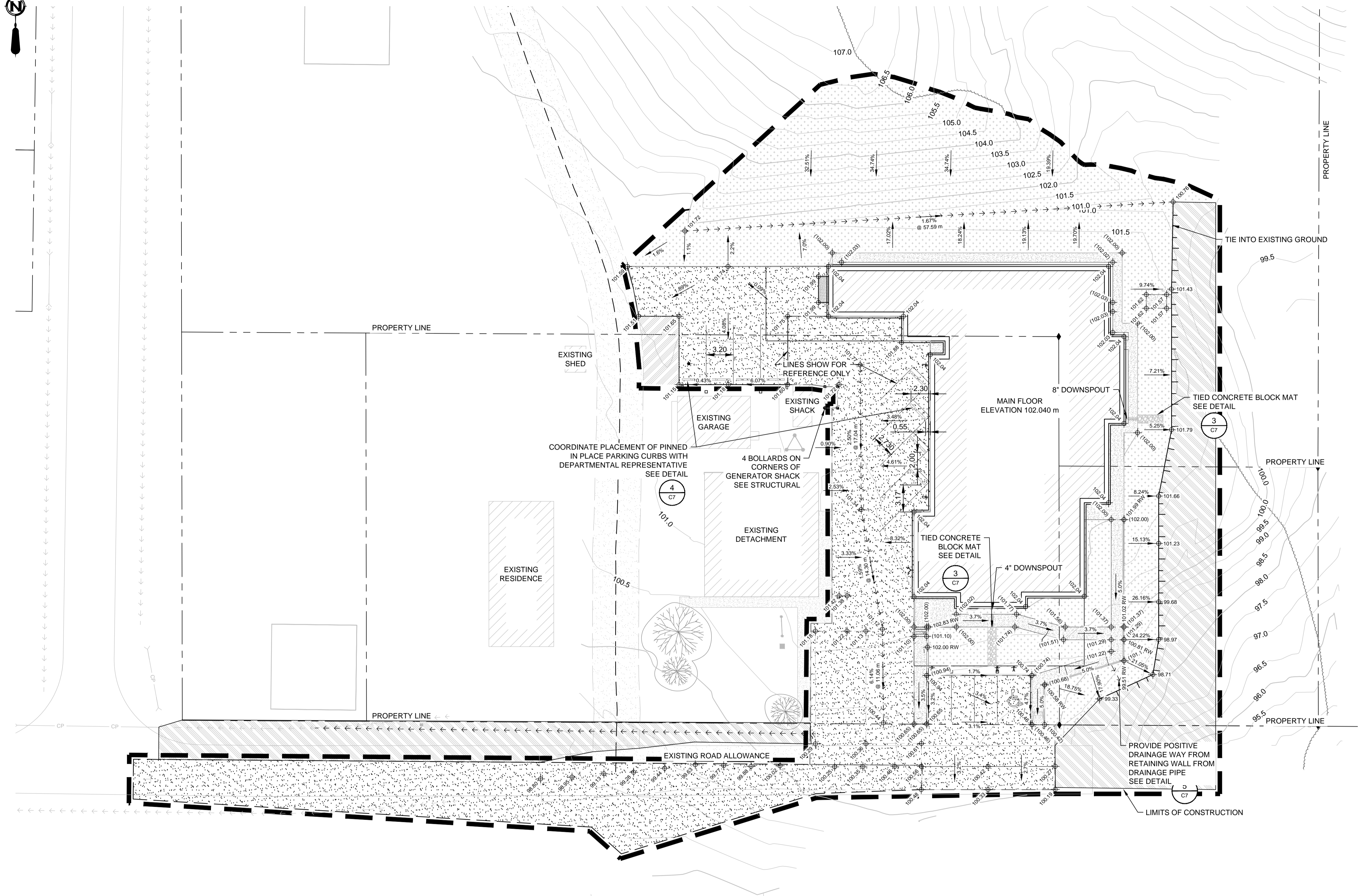
Project Manager/Administrateur de Projets
C. WIHLIDAL

Architectural and Engineering Resources Manager/
Ressources Architectural et de Directeur d'ingénierie

Client/client

Drawing title/Titre du dessin
EXISTING SITE PLAN

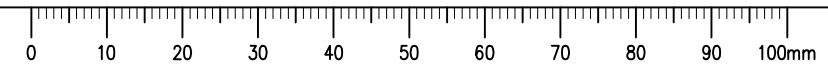
Project No./No. du projet	Sheet/ Feuille	Revision no./Lo Révision no.
24/2014	C1	0



LEGEND:

PROPOSED		EXISTING	
SANITARY SEWER	SS	SANITARY SEWER	SS
WATER	W	WATER	W
PERF. DRAIN	D	PERF. DRAIN	D
TELEPHONE	T	TELEPHONE	T
POWER	P	POWER	P
GAS	G	GAS	G
FENCE	X	FENCE	X
MAJOR CONTOUR	→ → → → →	MAJOR CONTOUR	→ → → → →
MINOR CONTOUR	→ → → → →	MINOR CONTOUR	→ → → → →
SWALE	→ → → → →	SWALE	→ → → → →
SANITARY MANHOLE	⊙	SANITARY MANHOLE	⊙
SANITARY CLEANOUT	⊙	SANITARY CLEANOUT	⊙
FIRE HYDRANT	⊙	FIRE HYDRANT	⊙
VALVE	⊙	VALVE	⊙
WATER PLUG	⊙	WATER PLUG	⊙
CULVERT	⊙	CULVERT	⊙
GRAVEL ROAD	[Pattern]	GRAVEL ROAD	[Pattern]
CLEARING & GRUBBING	[Pattern]	CLEARING & GRUBBING	[Pattern]
CONCRETE	[Pattern]	CONCRETE	[Pattern]
GRASS SEEDING	[Pattern]	GRASS SEEDING	[Pattern]
DRAINAGE GRADING	[Pattern]	DRAINAGE GRADING	[Pattern]
TOP OF GROUND ELEV.	⊕ 100.84	TOP OF GROUND ELEV.	⊕ 100.84
TOP OF CONCRETE ELEV.	⊕ (100.84)	TOP OF CONCRETE ELEV.	⊕ (100.84)
TOP OF RETAINING WALL	⊕ 100.84 RW	TOP OF RETAINING WALL	⊕ 100.84 RW

1 PLAN SCALE 1:250



- NOTES:**
- ALL DIMENSIONS IN METERS (m).
 - ALL ELEVATIONS ARE BASED OFF OF MERIDIAN SURVEY'S PLAN SURVEYED JANUARY 27, 2015 AND JULY 7, 2015.
 - ALL ELEVATIONS SHOWN ARE TO FINISHED SURFACE.
 - ELEVATIONS SHOWN ON ROADWAYS OR PARKING LOTS ARE TOP OF GRAVEL ELEVATIONS.
 - ALL WATER MAINS TO BE A MINIMUM OF 3 m DEEP.
 - CONTRACTOR RESPONSIBLE TO CONFIRM LOCATION OF ALL EXISTING UNDERGROUND UTILITIES PRIOR TO CONSTRUCTION.
 - ALL TREES WITHIN 8.0 m OF BUILDING TO BE REMOVED.
 - PORTION OF EXISTING WATER SERVICE BEING REMOVED WILL BE CUT BACK AND CAPPED AT THE CONNECTION ON THE WATERMAIN.
 - ALL EXCAVATION FOR PIPING IN EXISTING GRAVEL ROAD WILL BE BACKFILLED, COMPACTED AND RETURNED TO EXISTING ELEVATIONS.

SEPW Architecture Inc.
 100-3725 Pelican Street, Regina, SK S4S 0A8 ph: (306) 569-2255
 102-3718 Kenebec Place, Saskatoon SK S7P 5A6 ph: (306) 654-6457
 website: www.sepw.ca

Associated Engineering
 1922 Park Street, Regina, Saskatchewan, S4N 7M4
 Ph: 306 721 2466 Fax: 306 721 2474
 www.ae.ca



ASSOCIATION OF PROFESSIONAL ENGINEERS AND GEOSCIENTISTS OF SASKATCHEWAN
 CERTIFICATE OF AUTHORIZATION
 ASSOCIATED ENGINEERING (SASK.) LTD.
 NUMBER C116

PERMISSION TO CONSULT HELD BY:
 DISCIPLINE: Municipal SASK. REG. No.: 09862 SIGNATURE: [Signature]

ASSOCIATED ENGINEERING QUALITY MANAGEMENT	QUALITY MANAGER	DATE	PROJECT CAD/LEAD	DATE
	Carina-Melanie	2015/01/27	[Signature]	2015/02/04

DO NOT SCALE DRAWINGS

Revision/Revision	Description/Description	Date/Date
0	ISSUED FOR TENDER	2015/02/04

Project title/Titre du projet

**NEW POLICE BUILDING
 ONION LAKE, SASKATCHEWAN**

Approved by/Approve par
C. REESE

Designed by/Concept par
L. HASTINGS

Drawn by/Dessine par
J.S. YOUNG

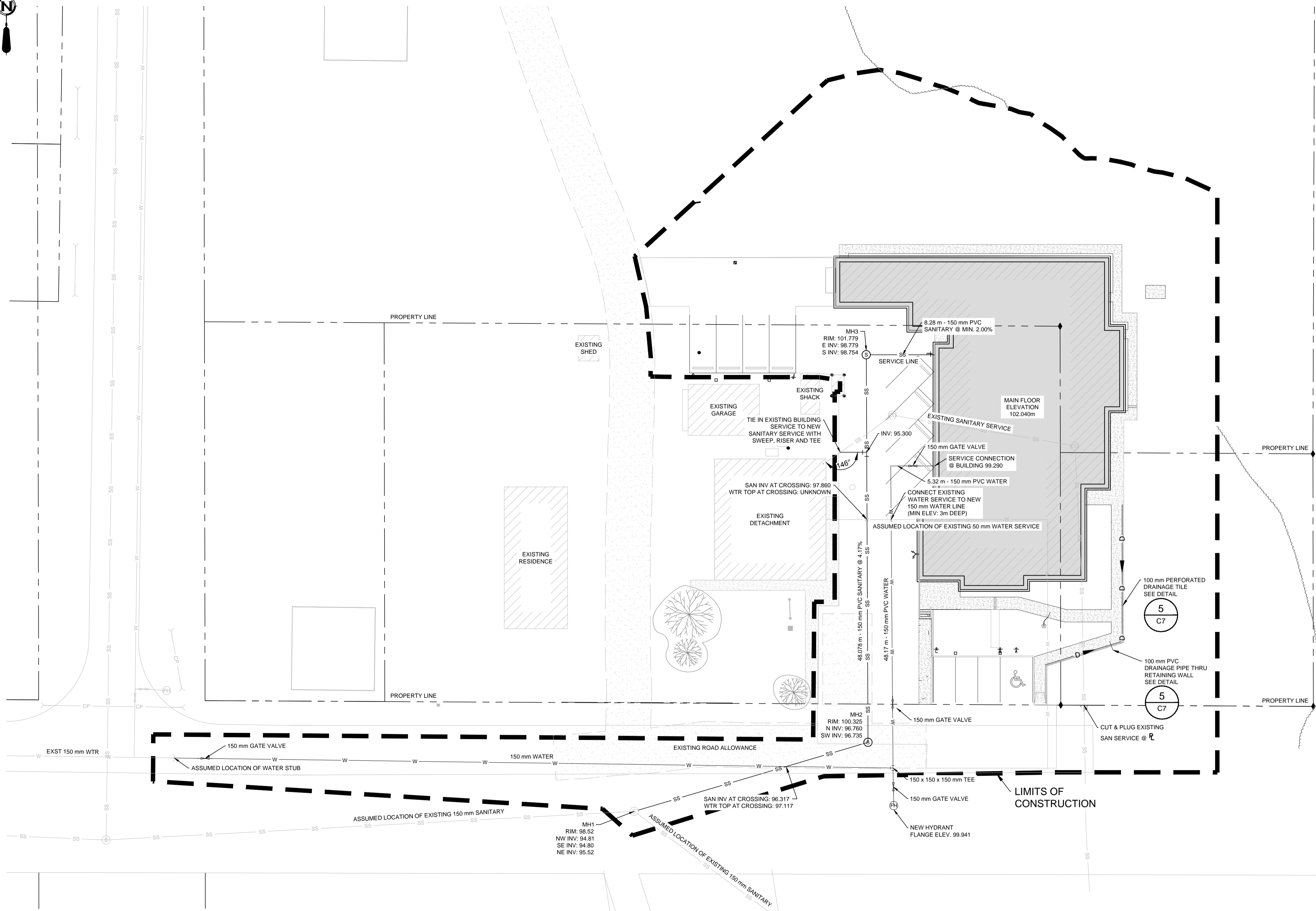
Project Manager/Administrateur de Projets
C. WIHLIDAL

Architectural and Engineering Resources Manager/
 Ressources Architecturales et de Directeur d'ingénierie

Client/client

Drawing title/Titre du dessin
SITE GRADING PLAN

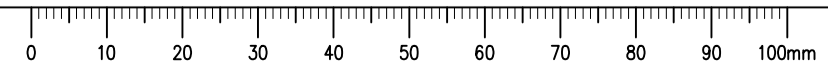
Project No./No. du projet	Sheet/ Feuille	Revision no./Lo Révision no.
24/2014	C2	0



LEGEND:

	PROPOSED	EXISTING		PROPOSED	EXISTING
SANITARY SEWER	SS	SS	GRAVEL ROAD	[Pattern]	[Pattern]
WATER	W	W	CLEARING & GRUBBING	[Pattern]	[Pattern]
PERF. DRAIN	D	D	CONCRETE	[Pattern]	[Pattern]
TELEPHONE	T	T	GRASS SEEDING	[Pattern]	[Pattern]
POWER	P	P	DRAINAGE GRADING	[Pattern]	[Pattern]
GAS	G	G	TOP OF GROUND ELEV.	± 100.84	
FENCE	X	X	TOP OF CONCRETE ELEV.	± (100.84)	
MAJOR CONTOUR	—	—	TOP OF RETAINING WALL	± 100.84 RW	
MINOR CONTOUR	—	—			
SWALE	→ → → →	→ → → →			
SANITARY MANHOLE	⊙	⊙			
SANITARY CLEANOUT	⊙	⊙			
FIRE HYDRANT	⊕	⊕			
VALVE	⊖	⊖			
WATER PLUG	⊔	⊔			
CULVERT	—	—			

1 PLAN SCALE 1:250



- NOTES:**
- ALL DIMENSIONS IN METERS (m).
 - ALL ELEVATIONS ARE BASED OFF OF MERIDIAN SURVEYS PLAN SURVEYED JANUARY 27, 2015 AND JULY 7, 2015.
 - ALL ELEVATIONS SHOWN ARE TO FINISHED SURFACE.
 - ELEVATIONS SHOWN ON ROADWAYS OR PARKING LOTS ARE TOP OF GRAVEL ELEVATIONS.
 - ALL WATER MAINS TO BE A MINIMUM OF 3m DEEP.
 - CONTRACTOR RESPONSIBLE TO CONFIRM LOCATION OF ALL EXISTING UNDERGROUND UTILITIES PRIOR TO CONSTRUCTION.
 - ALL TREES WITHIN 8.0 m OF BUILDING TO BE REMOVED.
 - PORTION OF EXISTING WATER SERVICE BEING REMOVED WILL BE CUT BACK AND CAPPED AT THE CONNECTION ON THE WATERMAIN.
 - ALL EXCAVATION FOR PIPING IN EXISTING GRAVEL ROAD WILL BE BACKFILLED, COMPACTED AND RETURNED TO EXISTING ELEVATIONS.

SEPW Architecture Inc.
 100 - 3725 Paton Street, Regina, SK S4S 0A8 ph: (306) 569-2255
 102 - 3718 Kiewit Place, Saskatoon SK S7P 5A6 ph: (306) 654-6457
 website: www.sepw.ca

Associated Engineering
 1922 Park Street, Regina, Saskatchewan, S4N 7M4
 Ph: 306 721 2466 Fax: 306 721 2474
 www.ae.ca



ASSOCIATION OF PROFESSIONAL ENGINEERS AND GEOSCIENTISTS OF SASKATCHEWAN
 CERTIFICATE OF AUTHORIZATION
 ASSOCIATED ENGINEERING (SASK.) LTD.
 NUMBER C116

PERMISSION TO CONSULT HELD BY:
 DISCIPLINE: Municipal SASK. REG. No.: 09862 SIGNATURE: [Signature]

ASSOCIATED ENGINEERING QUALITY MANAGEMENT	QUALITY MANAGER	DATE	PROJECT CAD/LEAD	DATE
	Carina-Melanie	2015/01/27	[Signature]	2015/02/04

DO NOT SCALE DRAWINGS

Revision/Revision	Description/Description	Date/Date
5		
4		
3		
2		
1		
0	ISSUED FOR TENDER	2015/02/04

Project title/Titre du projet

**NEW POLICE BUILDING
 ONION LAKE, SASKATCHEWAN**

Approved by/Approve par

Designed by/Concept par

Drawn by/Dessine par

Project Manager/Administrateur de Projets

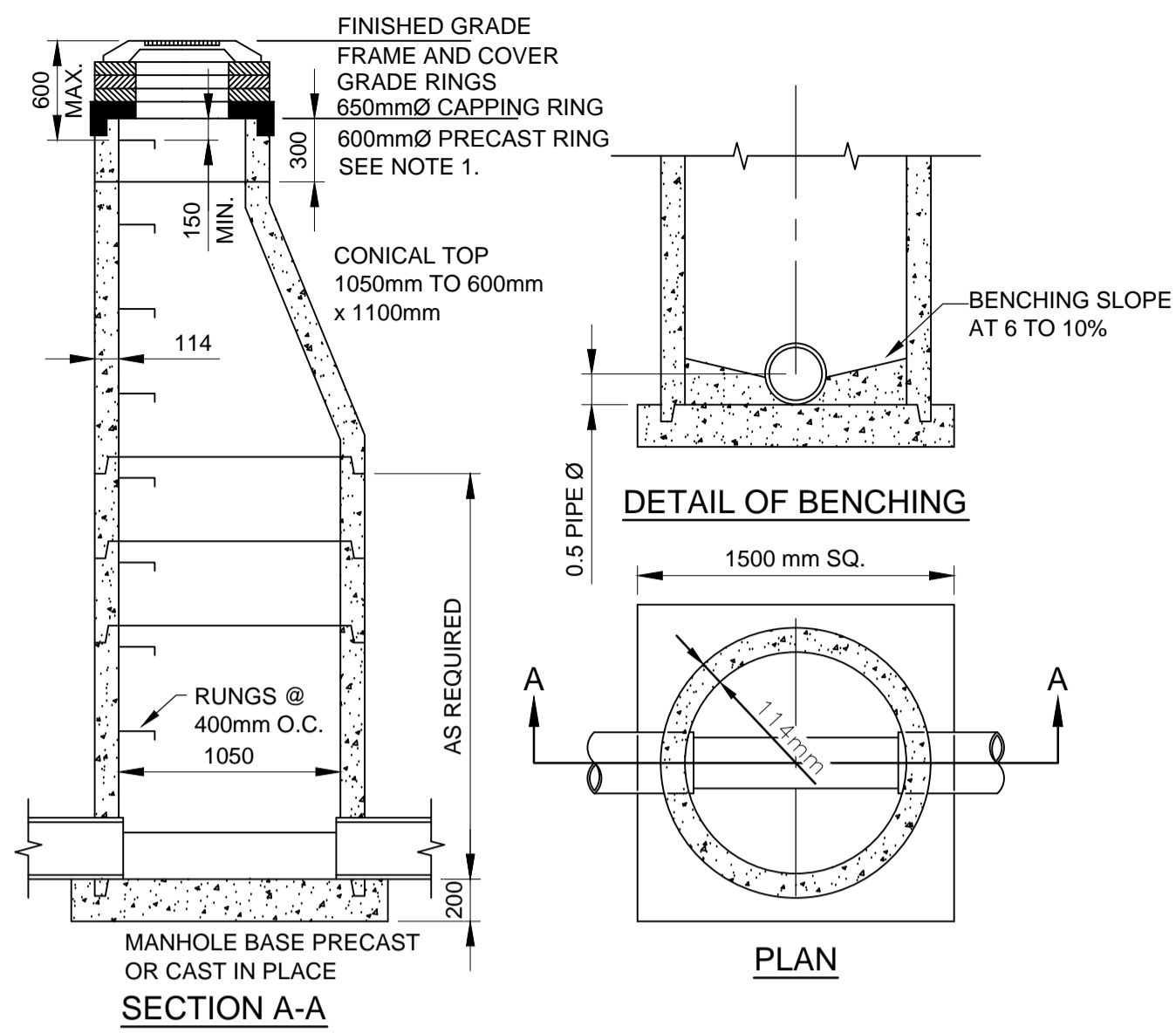
Architectural and Engineering Resources Manager/
 Ressources Architectural et de Directeur d'ingénierie

Client/client

Drawing title/Titre du dessin

SEWER & WATER SERVICING PLAN

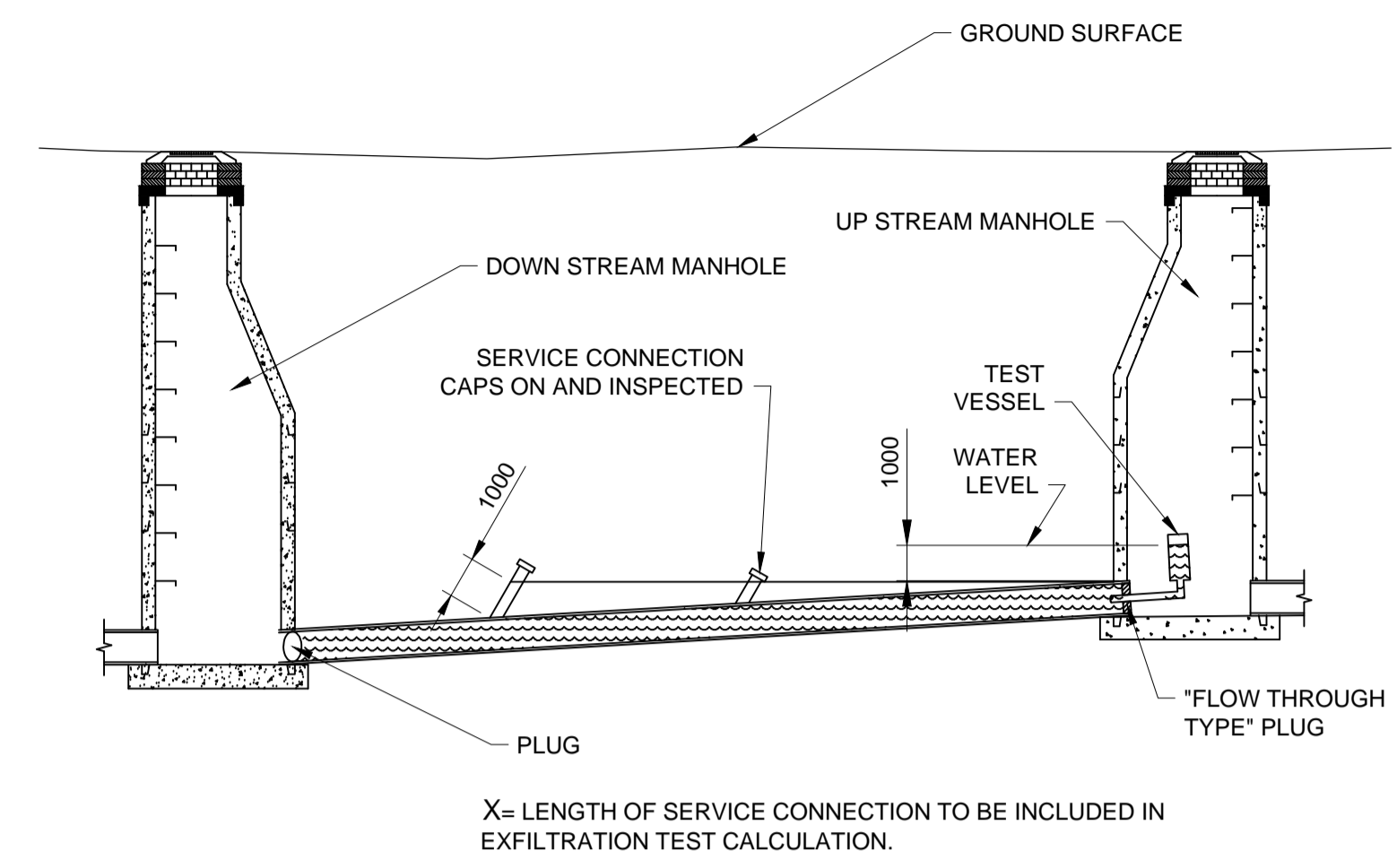
Project No./No. du projet	Sheet/ Feuille	Revision no./ Lo Révision no.
24/2014	C3	0



1 DETAIL N.T.S.
PRECAST MANHOLE
1050 mm DIA

NOTE:

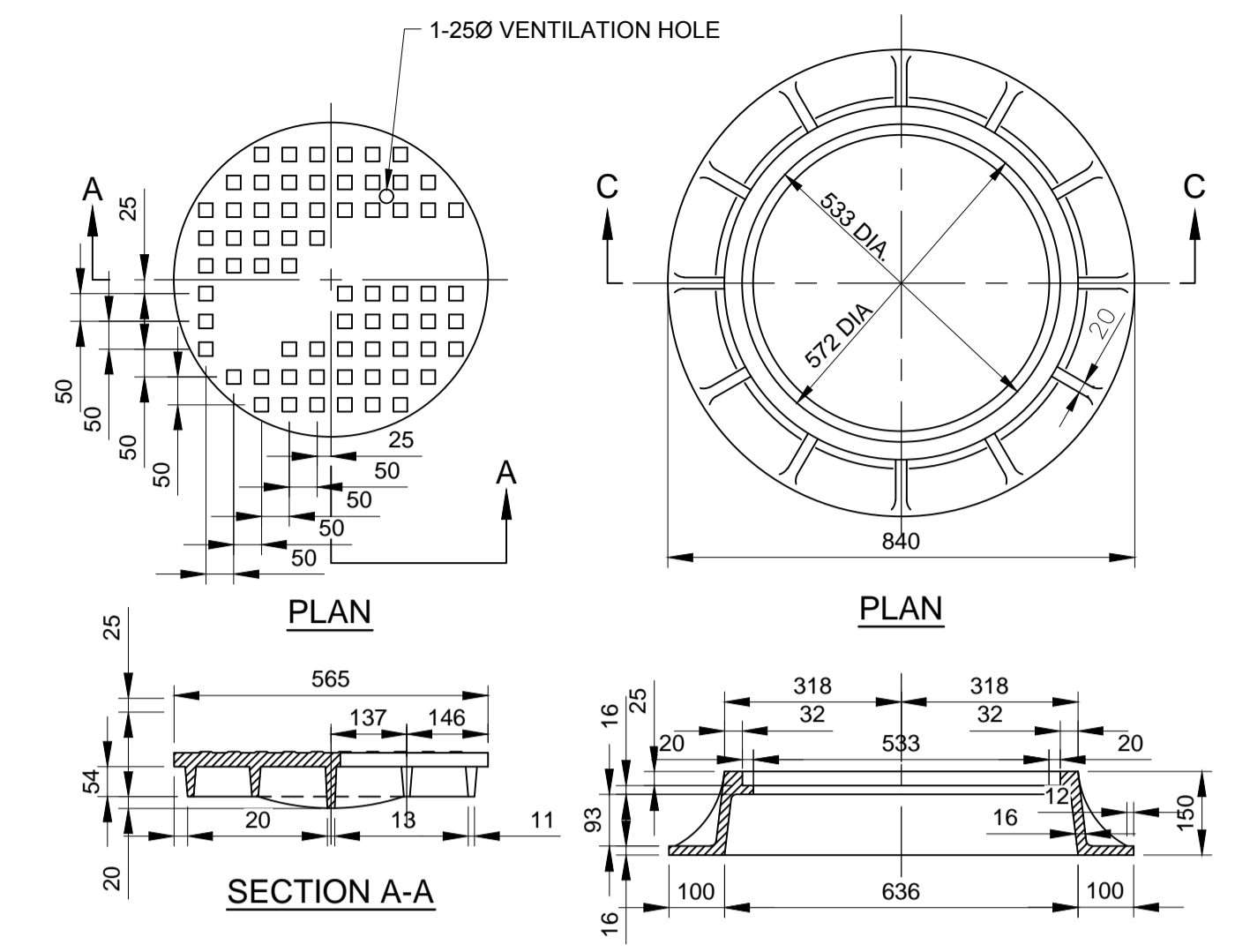
- MANHOLES MAY BE CONSTRUCTED WITH THE PRECAST RING AS SHOWN TO FACILITATE THE CONSTRUCTION OF THE ROAD SURFACE. (i.e. LEAVING CONICAL TOP IN GROUND.)



2 DETAIL N.T.S.
TYPICAL PIPE SECTION
EXFILTRATION TEST

NOTES:

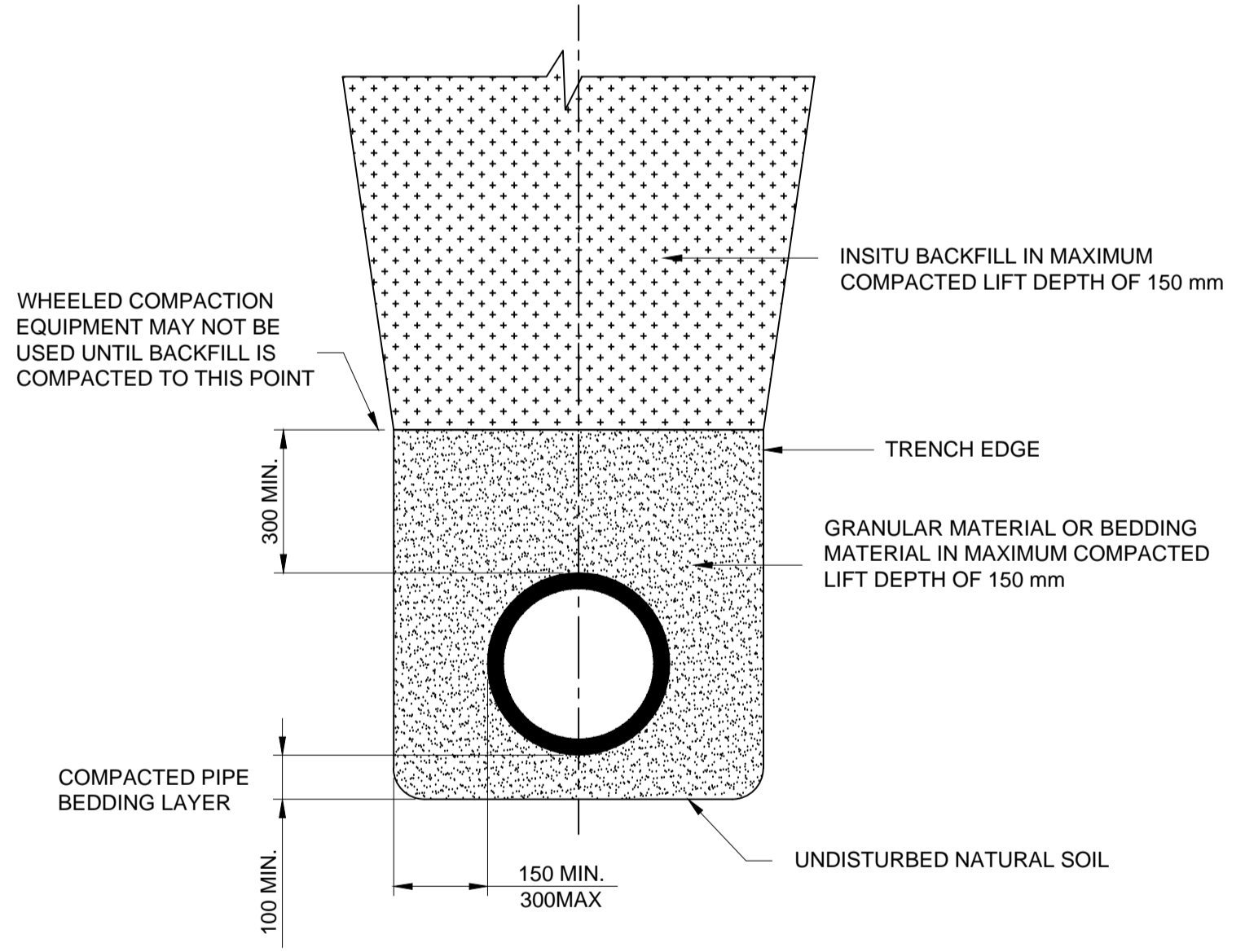
- THE ENTIRE LENGTH OF SERVICE IS NOT INCLUDED, ONLY THE PORTION BELOW THE 1 METRE HEAD IS INCLUDED IN THE EXFILTRATION TEST.
- ALL DIMENSIONS ARE IN MILLIMETERS (mm) UNLESS OTHERWISE NOTED.



3 DETAIL N.T.S.
STANDARD MANHOLE FRAME AND COVER
FOR NON PAVEMENT LOCATIONS

NOTES:

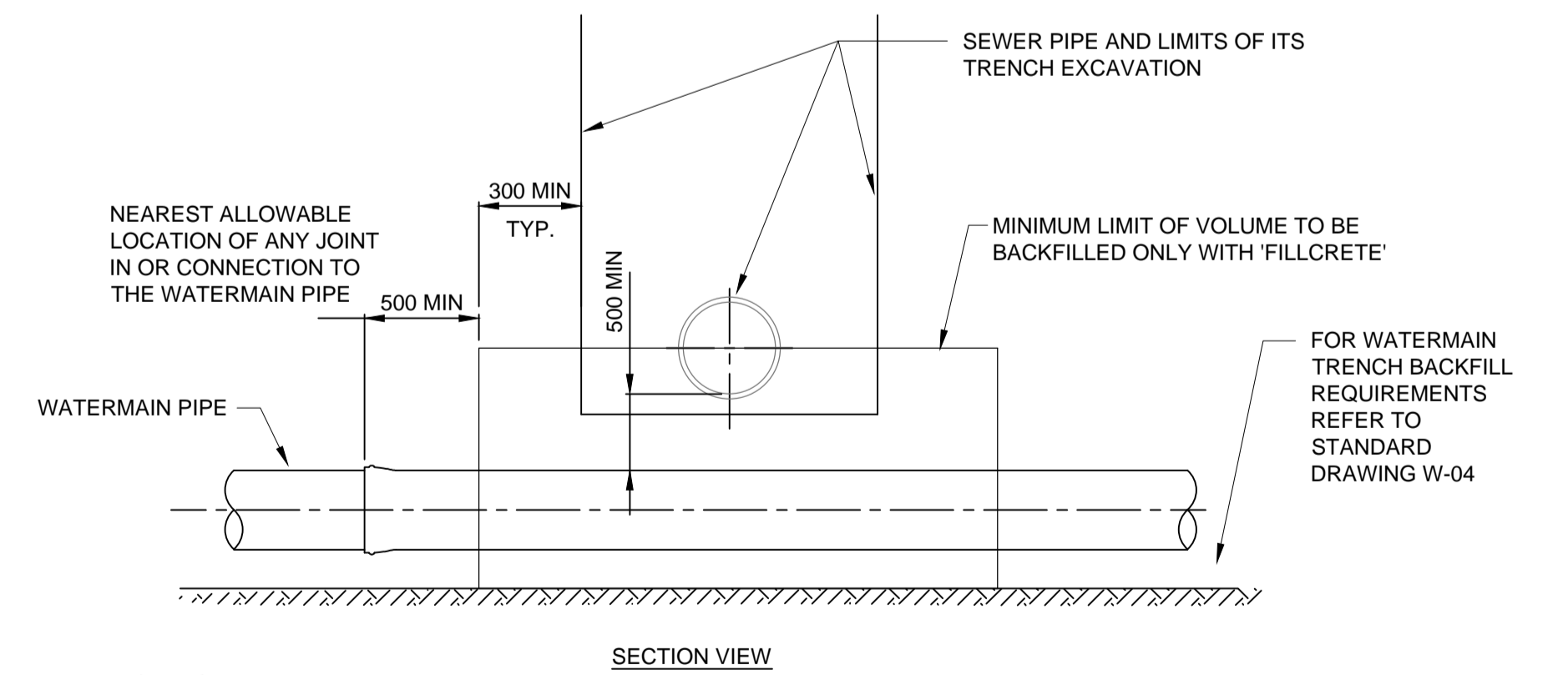
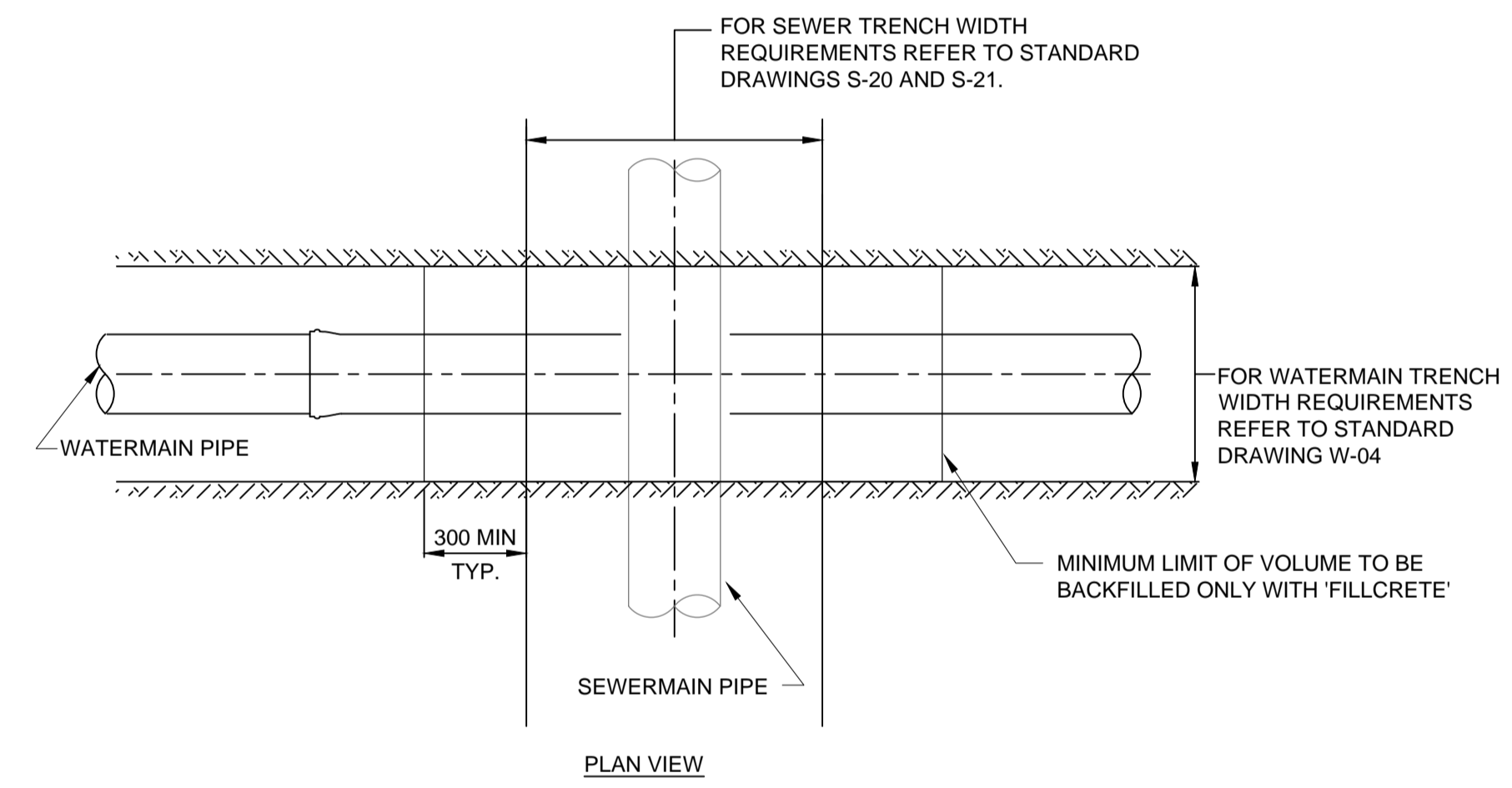
- MACHINE OR GRIND FRAMES, COVERS, AND GRATES TO EVEN NON-ROCKING BEARING SURFACES.
- FRAME AND COVER SHALL BE NORWOOD F-39, TITAN TF-39 OR APPROVED EQUAL.
- ALL DIMENSIONS ARE IN MILLIMETERS (mm) UNLESS OTHERWISE NOTED.



4 DETAIL N.T.S.
STANDARD FLEXIBLE PIPE
BEDDING AND TRENCH BACKFILL

NOTES:

- BACKFILL COMPACTION TO BE A MINIMUM OF 98% STANDARD PROCTOR DENSITY.
- INSITU BACKFILL MOISTURE CONTENT TO BE +/- 3% OF ADJACENT UNDISTURBED TRENCH SIDE.
- SIDE CLEARANCE MUST BE ADEQUATE TO PERMIT COMPACTION OF BACKFILL AT SIDE OF PIPE
- THE GUIDELINE MINIMUM FOR COMPACTION TESTING IS ONE TEST FOR EACH 1000 m FOR EACH LIFT IN THE PIPE BEDDING ZONE AND TRENCH BACKFILL ZONE.



5 DETAIL N.T.S.
WATERMAIN CROSSING
BENEATH SEWERMAIN

NOTES:

- THIS DETAIL IS TO BE APPLIED IN THE FOLLOWING INSTANCES WHERE THE OPEN CUT TRENCH METHOD IS USED:
-ALL LOCATIONS WHERE NEW SANITARY SEWERMAIN IS INSTALLED OVER EITHER NEW OR EXISTING WATERMAIN.
-ALL LOCATIONS WHERE NEW WATERMAIN IS INSTALLED UNDER EITHER EXISTING SANITARY SEWERMAIN OR EXISTING STORM SEWERMAIN.
- WHERE, IN THE OPINION OF THE ENGINEER, SOIL CONDITIONS DICTATE THAT THE AREA FILLED WITH 'FILLCRETE' SHOULD BE EXPANDED FROM THAT SHOWN ON THIS DRAWING THEN THE FIELD DIRECTED EXTENT OF FILL WILL BE REQUIRED.
- ENSURE MAINS ARE NOT DISPLACED DURING EITHER EXCAVATION OR 'FILLCRETE' INSTALLATION.
- MAXIMUM DEPTH OF 'FILLCRETE' THAT MAY BE INSTALLED IN ANY SINGLE POUR IS 1.0 m. IF MORE THAN 1.0 m TOTAL DEPTH IS REQUIRED THEN THE INITIAL DEPTH MUST BE CURED TO THE SATISFACTION OF THE ENGINEER BEFORE FURTHER DEPTH IS ADDED ON TOP OF IT.
- WHEREVER POSSIBLE, DESIGN WATER AND SEWER SERVICES SUCH THAT THE WATERMAIN CROSSES ABOVE SEWERMAIN(S).
- AS MUCH AS POSSIBLE CENTRE THE LENGTH OF WATERMAIN PIPE AT THE POINT OF CROSSING THE SEWER(S).



ASSOCIATION OF PROFESSIONAL ENGINEERS AND GEOSCIENTISTS OF SASKATCHEWAN
CERTIFICATE OF AUTHORIZATION
ASSOCIATED ENGINEERING (SASK.) LTD.

NUMBER C116
PERMISSION TO CONSULT HELD BY:
DISCIPLINE: Municipal SASK. REG. No. 09862 SIGNATURE: [Signature]

ASSOCIATED ENGINEERING QUALITY MANAGEMENT
QUALITY MANAGER: Camille-Melanie DATE: 2015/01/25 PROJECT CAD/LEAD: [Signature] DATE: 2015/01/25

DO NOT SCALE DRAWINGS

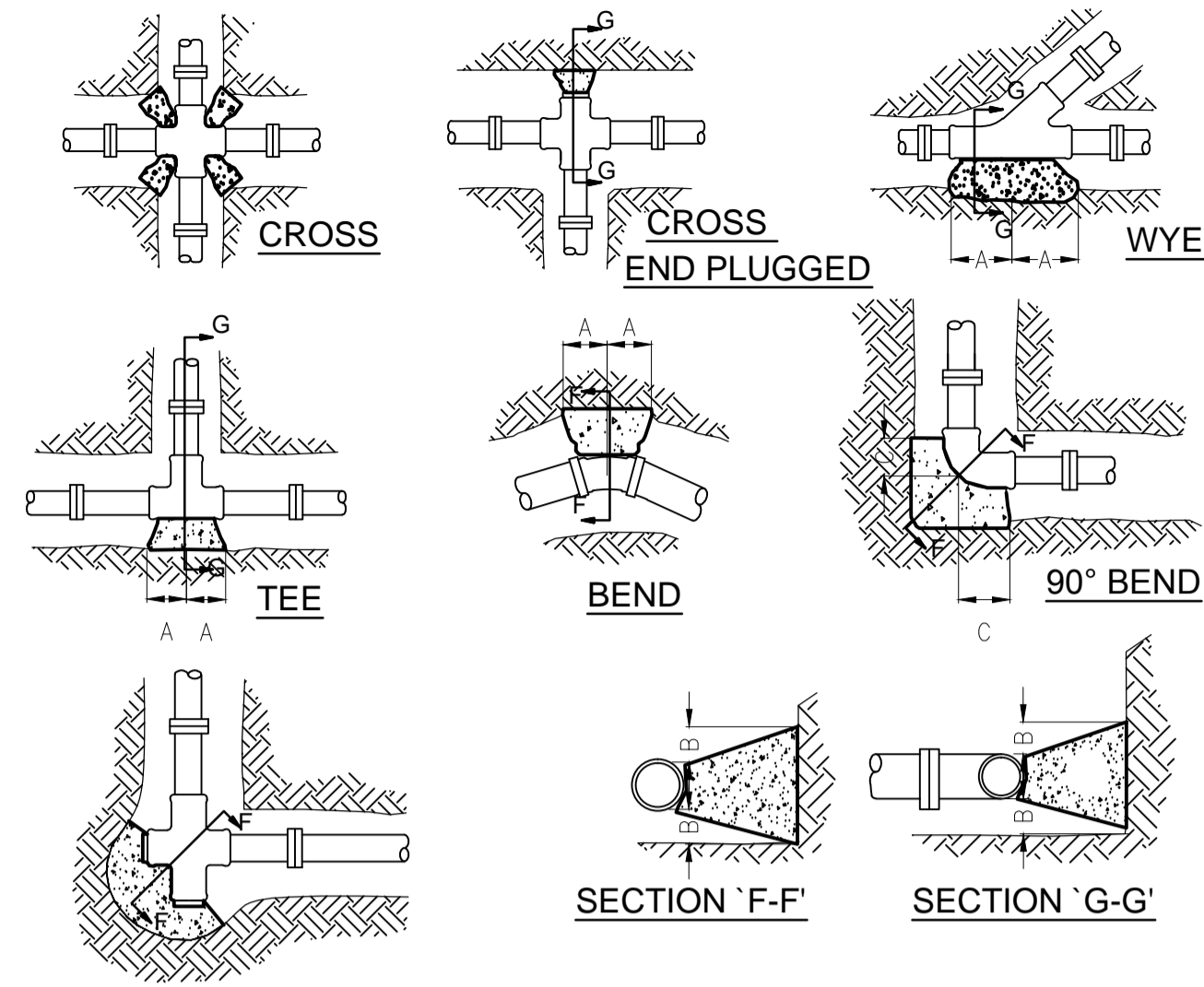
5		
4		
3		
2		
1		
0	ISSUED FOR TENDER	2015/02/4
Revision/Revision	Description/Description	Date/Date

Project title/Titre du projet
**NEW POLICE BUILDING
ONION LAKE, SASKATCHEWAN**

Approved by/Approve par
Designed by/Concept par
Drawn by/Dessine par
Project Manager/Administrateur de Projets
Architectural and Engineering Resources Manager/
Ressources Architectural et de Directeur d'ingénierie
Client/client
Drawing title/Titre du dessin

DETAILS

Project No./No. du projet	Sheet/ Feuille	Revision no./ La Révision no.
24/2014	C4	0



CORNER CROSS OR TEE
END(S) PLUGGED

NOTES:

- DIMENSIONS OF THRUST BLOCKS AND REQUIRED BEARING AREAS SHOWN ARE BASED ON A MAXIMUM TEST/OPERATING PRESSURE OF 689 kPa (100 psi) AGAINST SOIL WHICH HAS A SAFE LOAD BEARING CAPACITY OF 70 kPa (10 psi) MINIMUM. FOR ANY CONDITIONS WHICH VARY FROM THESE, THE DIMENSIONS/AREAS MUST BE ADJUSTED ACCORDINGLY
- REFER TO SPECIFICATIONS SECTION 02511 - WATERMAINS FOR CONCRETE REQUIREMENTS

PIPE DIAMETER (mm)	90° BEND				45° BEND				TEE, PLUGS, WYES				22.5° & 11.25° BENDS			
	A (mm)	B (mm)	C (mm)	AREA (sq.m)	A (mm)	B (mm)	C (mm)	AREA (sq.m)	A (mm)	B (mm)	C (mm)	AREA (sq.m)	A (mm)	B (mm)	C (mm)	AREA (sq.m)
100	170	200	0.16	0.09	190	140	0.11	0.11	110	60	0.04	0.04				
150	250	300	0.33	0.18	270	190	0.23	0.23	160	90	0.08	0.08				
200	320	350	0.56	0.30	350	250	0.40	0.40	210	110	0.14	0.14				
250	390	400	0.85	0.46	430	310	0.60	0.60	260	140	0.22	0.22				
300	460	450	1.20	0.65	520	370	0.85	0.85	310	160	0.31	0.31				
350	530	500	1.61	0.87	600	420	1.14	1.14	340	170	0.38	0.38				
400	610	550	2.08	1.13	680	480	1.47	1.47	390	190	0.49	0.49				
450	680	600	2.62	1.42	760	540	1.85	1.85	440	220	0.62	0.62				
500	750	650	3.21	1.75	840	590	2.27	2.27	490	240	0.77	0.77				
600	900	750	4.95	2.49	1010	710	3.24	3.24	590	290	1.22	1.22				
750	1110	900	7.04	3.81	1250	870	4.98	4.98	780	410	1.95	1.95				
900	1330	1050	10.09	5.46	1490	1040	7.14	7.14	930	480	2.79	2.79				

VERTICAL RESTRAINTS

- THE FIRST NUMBER IN THIS TABLE IS THE RECOMMENDED RESTRAINED LENGTH OF PIPE ON EACH SIDE OF A VERTICAL BEND WHERE THE THRUST IS ACTING GENERALLY UPWARDS TOWARDS THE GROUND SURFACE. SEE FIGURE 4A
- THE SECOND NUMBER IN THIS TABLE IS THE RECOMMENDED RESTRAINED LENGTH OF PIPE ON EACH SIDE OF A VERTICAL BEND WHERE THE THRUST IS ACTING GENERALLY DOWNWARDS AWAY FROM THE GROUND SURFACE. SEE FIGURE 4B
- WHERE RECOMMENDED RESTRAINTS LENGTHS OVERLAP BETWEEN FITTINGS RESTRAIN ALL JOINTS BETWEEN THEM.

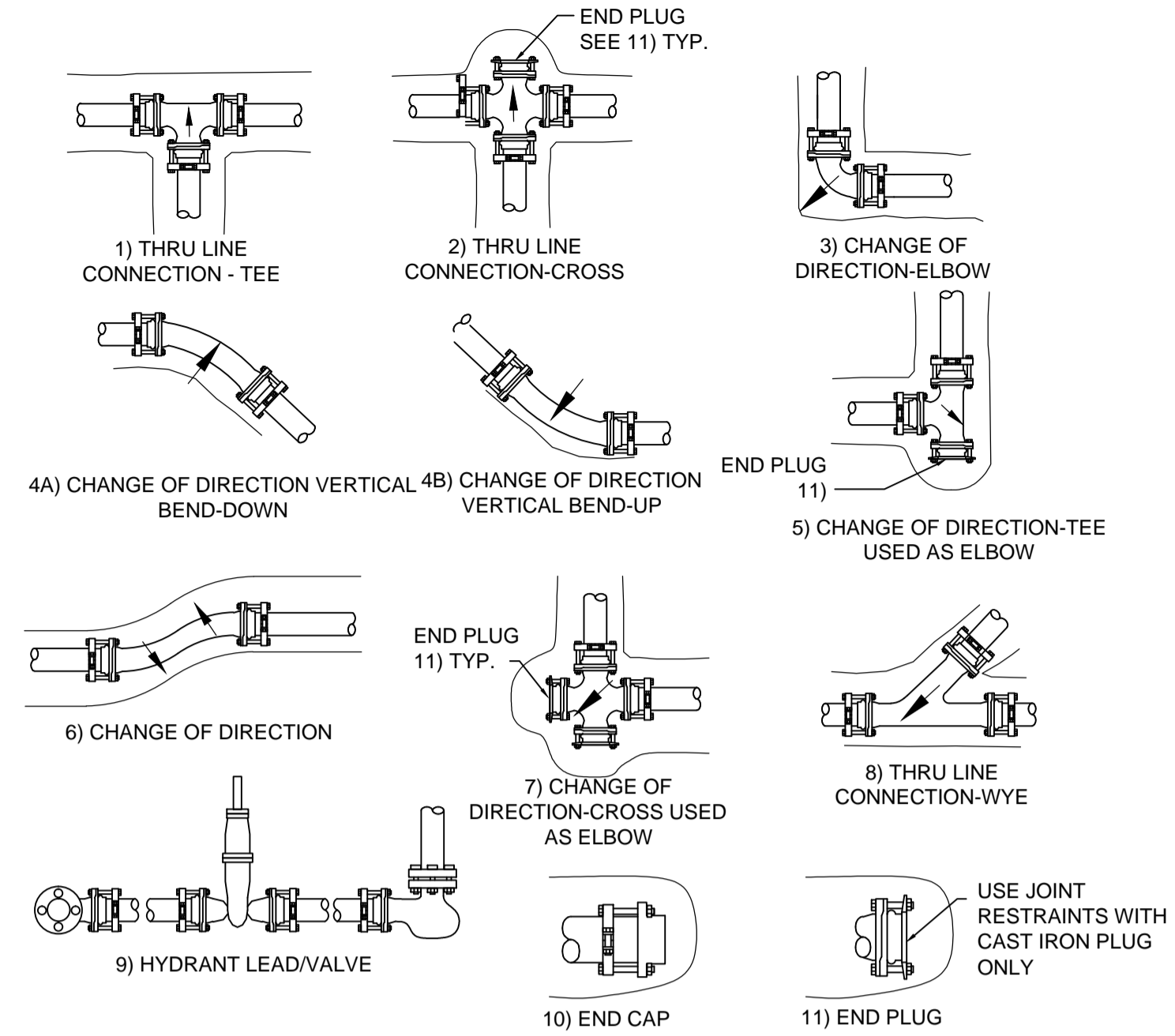
TYPE	NOMINAL PIPE SIZE				
	100	150	200	250	300
45° VERTICAL OFFSET	1.2 m / 0.6 m	1.8 m / 0.9 m	2.4 m / 1.2 m	2.7 m / 1.5 m	3.4 m / 1.8 m
22.5° VERTICAL OFFSET	0.6 m / 0.3 m	0.9 m / 0.6 m	1.2 m / 0.6 m	1.5 m / 0.9 m	1.5 m / 0.9 m

HORIZONTAL RESTRAINTS

TYPE	NOMINAL PIPE SIZE				
	100	150	200	250	300
90° BEND	1.5 m	2.1 m	2.7 m	3.4 m	4.0 m
45° BEND	0.6 m	0.9 m	1.2 m	1.5 m	1.8 m
22.5° BEND	0.3 m	0.6 m	0.6 m	0.6 m	0.9 m
11.25° BEND	0.3 m	0.3 m	0.3 m	0.3 m	0.6 m
SIZE ON SIZE TEE	Br. only	Br. only	Br. only	Br. only	Br. only
PLUGS & VALVES	3.0 m	4.3 m	5.5 m	6.7 m	7.9 m

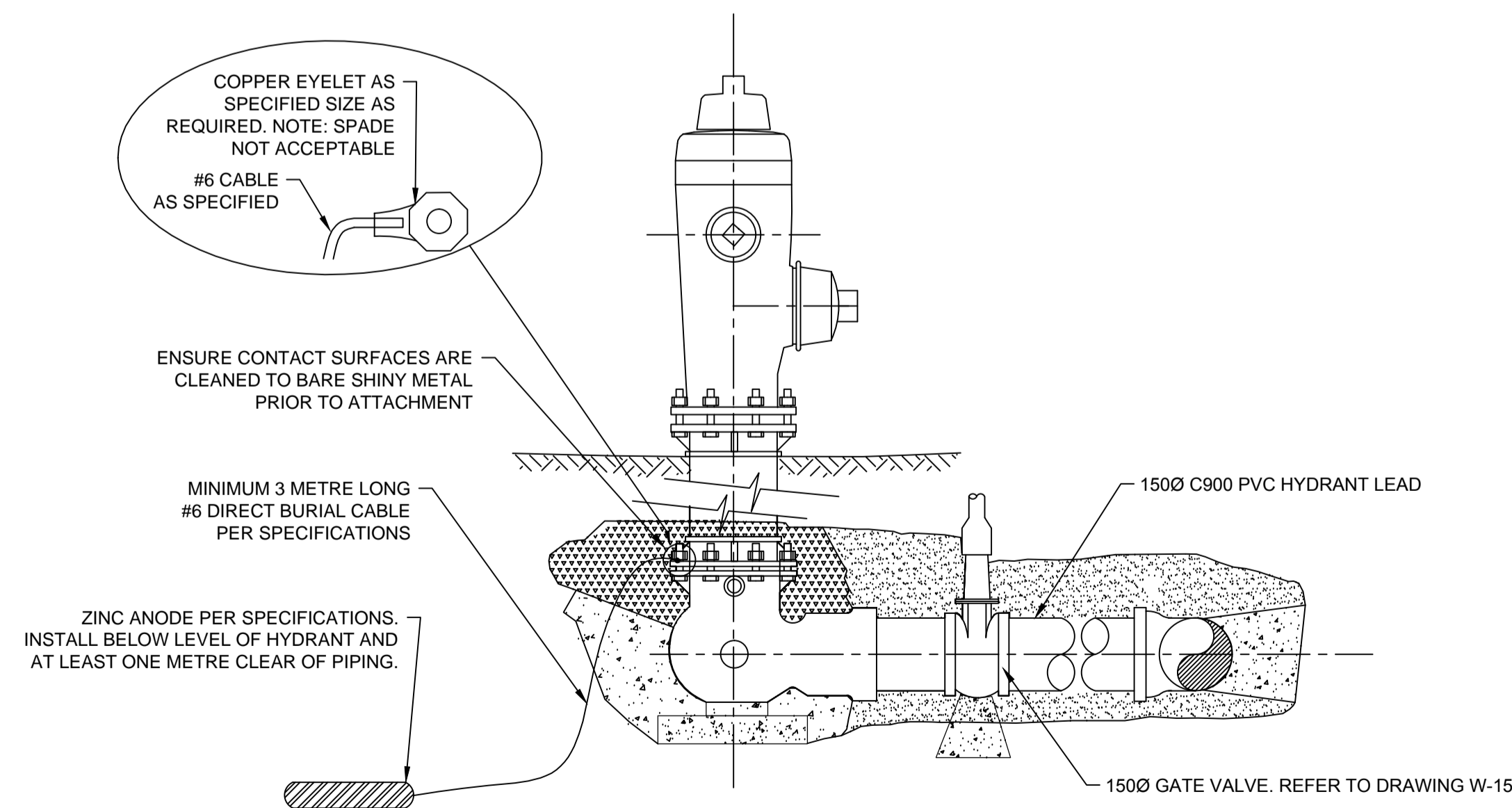
NOTE:

- RESTRAINED LENGTHS IN TABLE ARE FOR MAXIMUM TEST PRESSURE OF 690 kPa WITH PIPE FULLY BEDDED IN GRANULAR MATERIAL. IF SITE CONDITIONS VARY FROM THESE - CONTACT THE ENGINEER.

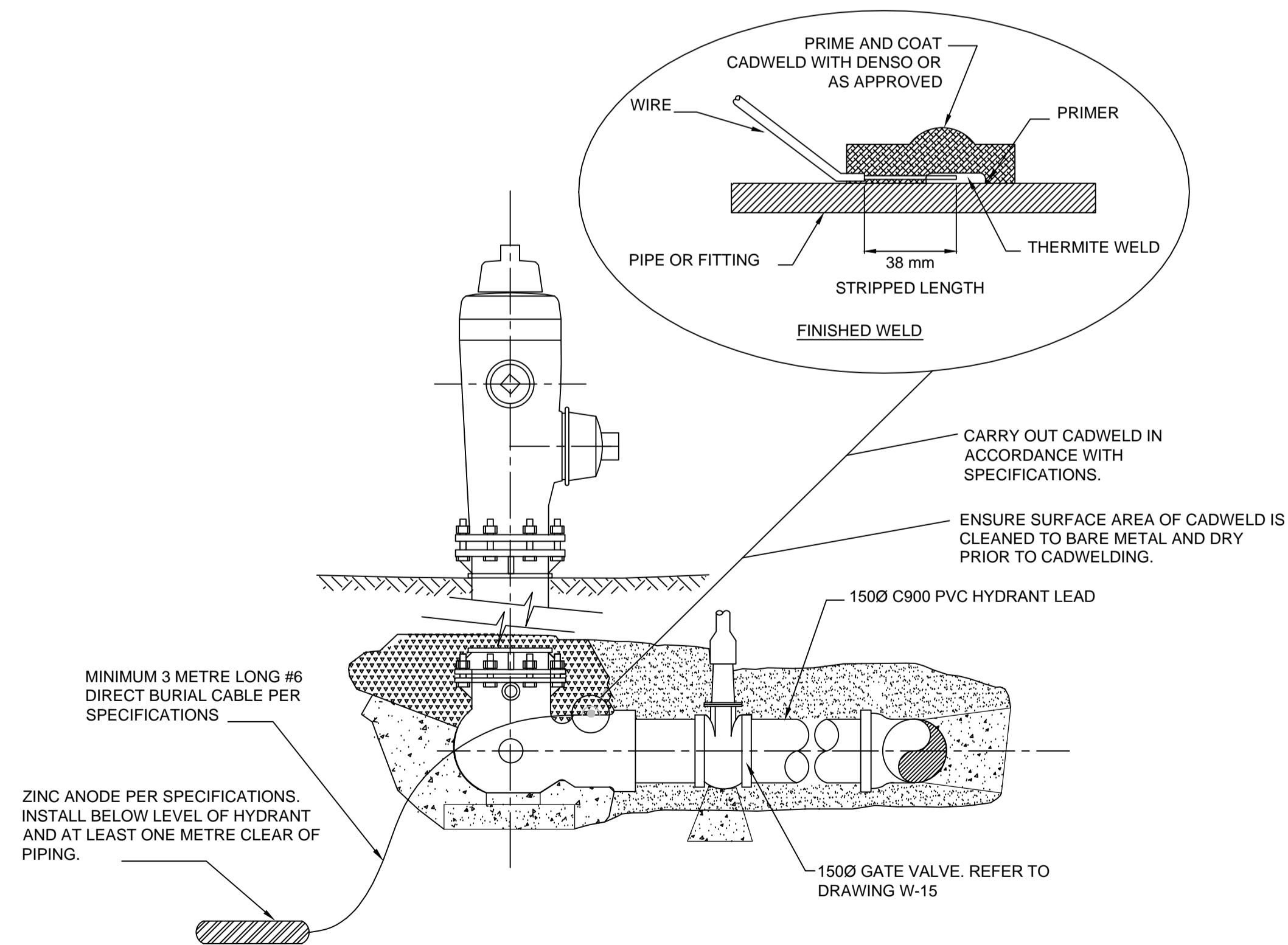


2 DETAIL N.T.S.
MECHANICAL THRUST RESTRAINTS

1 DETAIL N.T.S.
THRUST BLOCKS



3 DETAIL N.T.S.
CATHODIC PROTECTION OF HYDRANT USING EYELET CONNECTION



4 DETAIL N.T.S.
CATHODIC PROTECTION OF HYDRANT USING CADWELD PROTECTION



ASSOCIATION OF PROFESSIONAL ENGINEERS AND GEOSCIENTISTS OF SASKATCHEWAN
CERTIFICATE OF AUTHORIZATION
ASSOCIATED ENGINEERING (SASK.) LTD.

NUMBER C116
PERMISSION TO CONSULT HELD BY:
DISCIPLINE: SASK. REG. No. SIGNATURE:
Municipal 09862

ASSOCIATED ENGINEERING QUALITY MANAGEMENT
QUALITY MANAGER: Carina-Melanie, 2025/01/25
PROJECT CAD/LEAD: [Signature] DATE: 2015/02/04

DO NOT SCALE DRAWINGS

5		
4		
3		
2		
1		
0	ISSUED FOR TENDER	2015/02/04

Revision/Revision Description/Description Date/Date
Client/client

Project title/Titre du projet

**NEW POLICE BUILDING
ONION LAKE, SASKATCHEWAN**

Approved by/Approve par

Designed by/Concept par

Drawn by/Dessine par

Project Manager/Administrateur de Projets

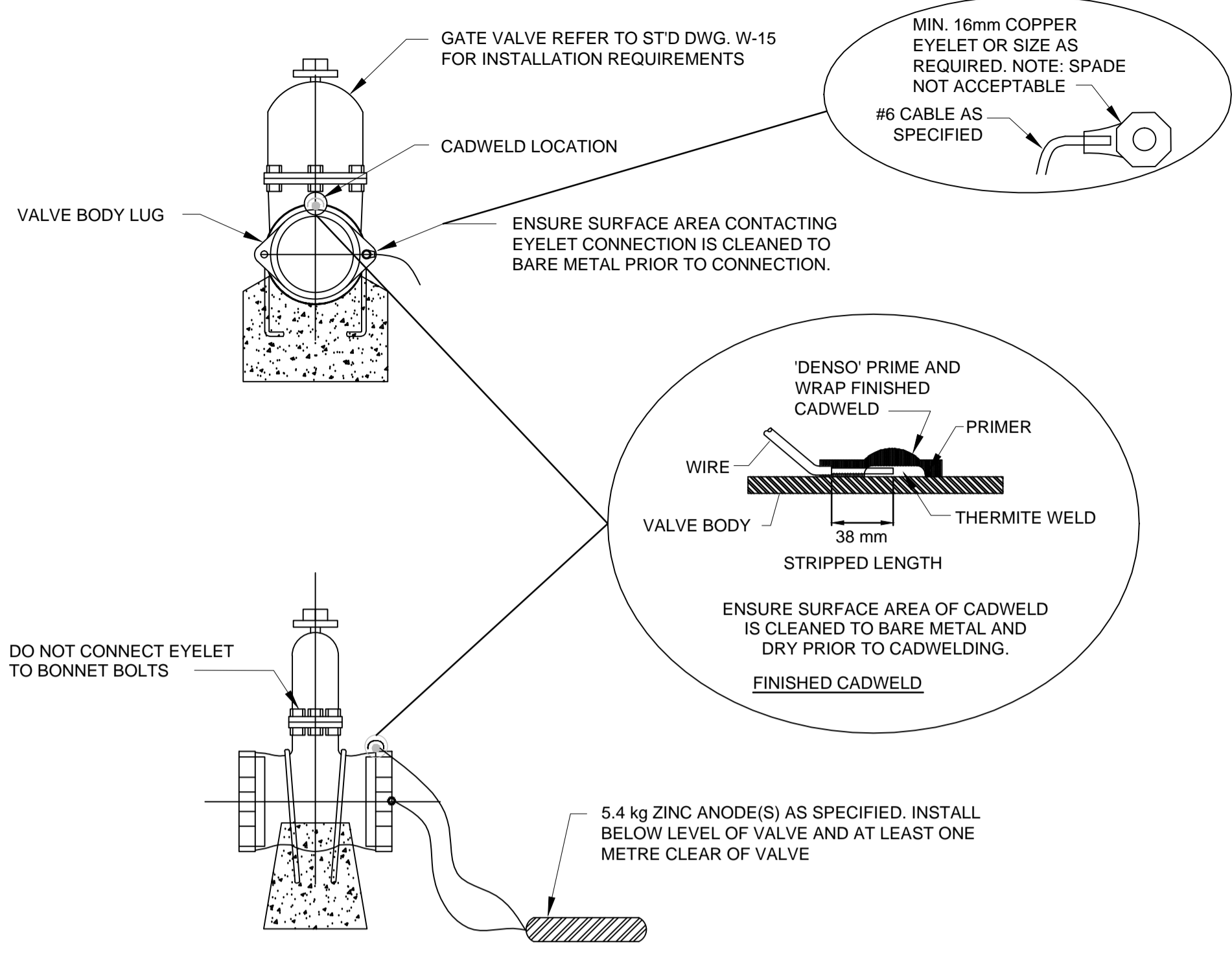
Architectural and Engineering Resources Manager/
Ressources Architectural et de Directeur d'ingénierie

Client/client

Drawing title/Titre du dessin

DETAILS

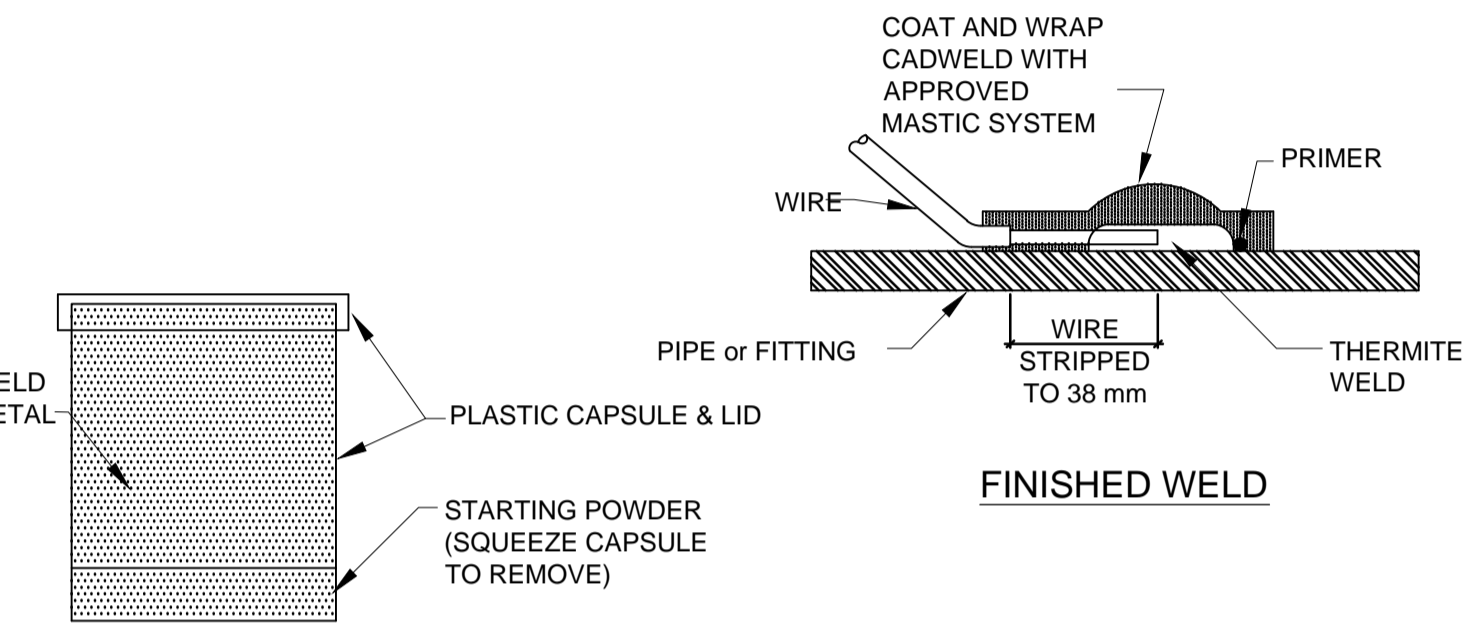
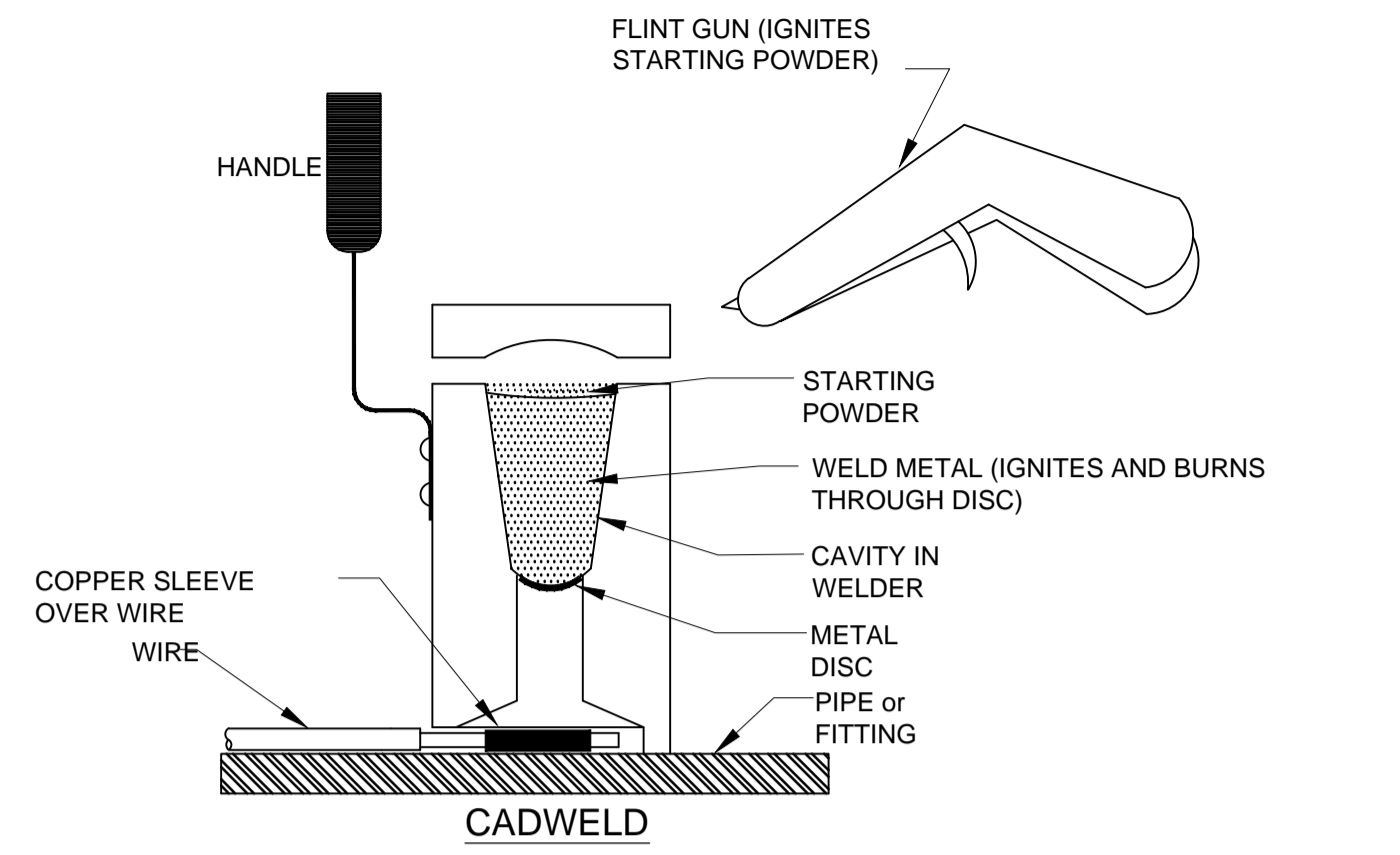
Project No./No. du projet: 24/2014
Sheet/Feuille: C5
Revision no./La Révision no.: 0



NOTES:

1. VALVES 300 mm AND SMALLER REQUIRE A SINGLE ANODE. VALVES 350 mm AND LARGER REQUIRE TWO (2) ANODES WHICH MUST BE LOCATED AS DESCRIBED AND ALSO SPACED AT LEAST ONE METRE APART.
2. ANODE LEAD ATTACHMENT TO THE VALVE MAY BE MADE BY EITHER EYELET OR CADWELD. BOTH OPTIONS ARE DEPICTED ON THIS DRAWING.
3. FOR VALVES 350 mm AND LARGER THE ANODE LEADS MAY BE CONNECTED TO A SINGLE POINT IF EYELET CONNECTION IS USED. IF CADWELD IS USED THEN A CADWELD CONNECTION MUST BE PROVIDED FOR EACH LEAD

1 DETAIL N.T.S.
CATHODIC PROTECTION OF GATE VALVE

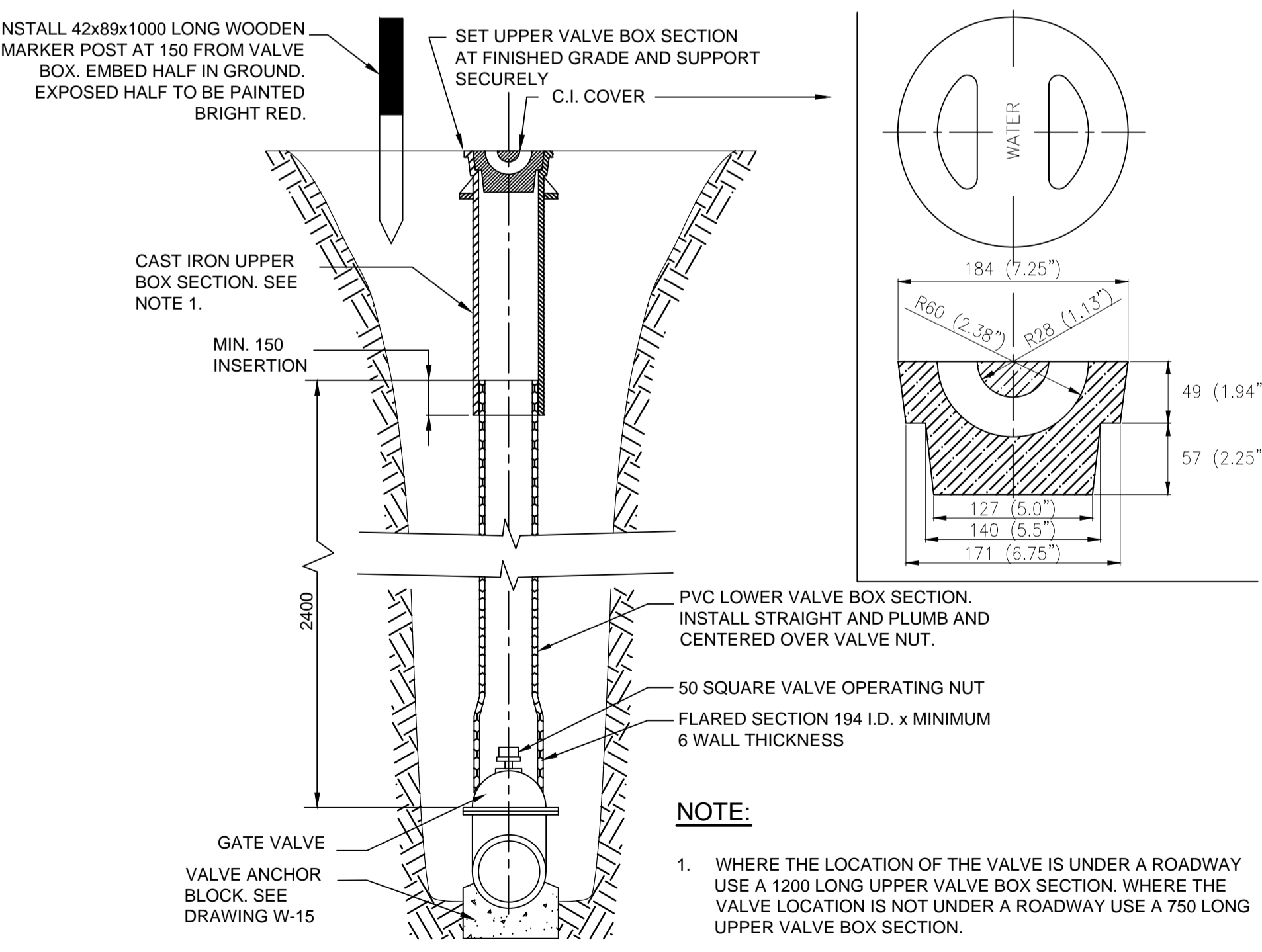


VALVE SIZE (mm)	REQUIRED AREA - SQ. M	
	"X" x "Y"	=AREA
100	1000 1000	0.09
150		0.18
200		0.31
250		0.47
300		0.67
350		0.97
400		1.25
450		1.56
500		1.93
600		2.73
750		4.20
900		6.03

NOTES:

1. DIMENSIONS OF BLOCK AND REQUIRED BEARING AREA ARE BASED UPON A MAXIMUM TEST/OPERATING PRESSURE OF 689 kPa (100 psi) AGAINST SOIL WHICH HAS A SAFE LOAD BEARING CAPACITY OF 70 kPa (10 psi) MINIMUM. FOR ANY CONDITION WHICH VARIES FROM THESE CONFIRM REQUIRED AREA WITH THE ENGINEER.
2. FOR CONCRETE REQUIREMENTS REFER TO SPECIFICATIONS SECTION 02511-WATERMANS.
3. ANY VALVE WHICH HAS EITHER TYTON OR MJ STYLE END CONNECTIONS MUST BE ANCHORED AS SHOWN. THIS INCLUDES GATE VALVES AND BUTTERFLY VALVES.

3 DETAIL N.T.S.
VALVE ANCHORING



NOTE:

1. WHERE THE LOCATION OF THE VALVE IS UNDER A ROADWAY USE A 1200 LONG UPPER VALVE BOX SECTION. WHERE THE VALVE LOCATION IS NOT UNDER A ROADWAY USE A 750 LONG UPPER VALVE BOX SECTION.

4 DETAIL N.T.S.
VALVE BOX INSTALLATION



ASSOCIATION OF PROFESSIONAL ENGINEERS AND GEOSCIENTISTS OF SASKATCHEWAN
CERTIFICATE OF AUTHORIZATION
ASSOCIATED ENGINEERING (SASK.) LTD.

NUMBER C116
PERMISSION TO CONSULT HELD BY:
DISCIPLINE: Municipal SASK. REG. No. 09862 SIGNATURE: [Signature]

ASSOCIATED ENGINEERING QUALITY MANAGEMENT
QUALITY MANAGER: [Signature] DATE: 2015/01/28
PROJECT CAD/LEAD: [Signature] DATE: 2015/01/28

DO NOT SCALE DRAWINGS

Revision/Revision	Description/Description	Date/Date
5		
4		
3		
2		
1		
0	ISSUED FOR TENDER	2015/01/28

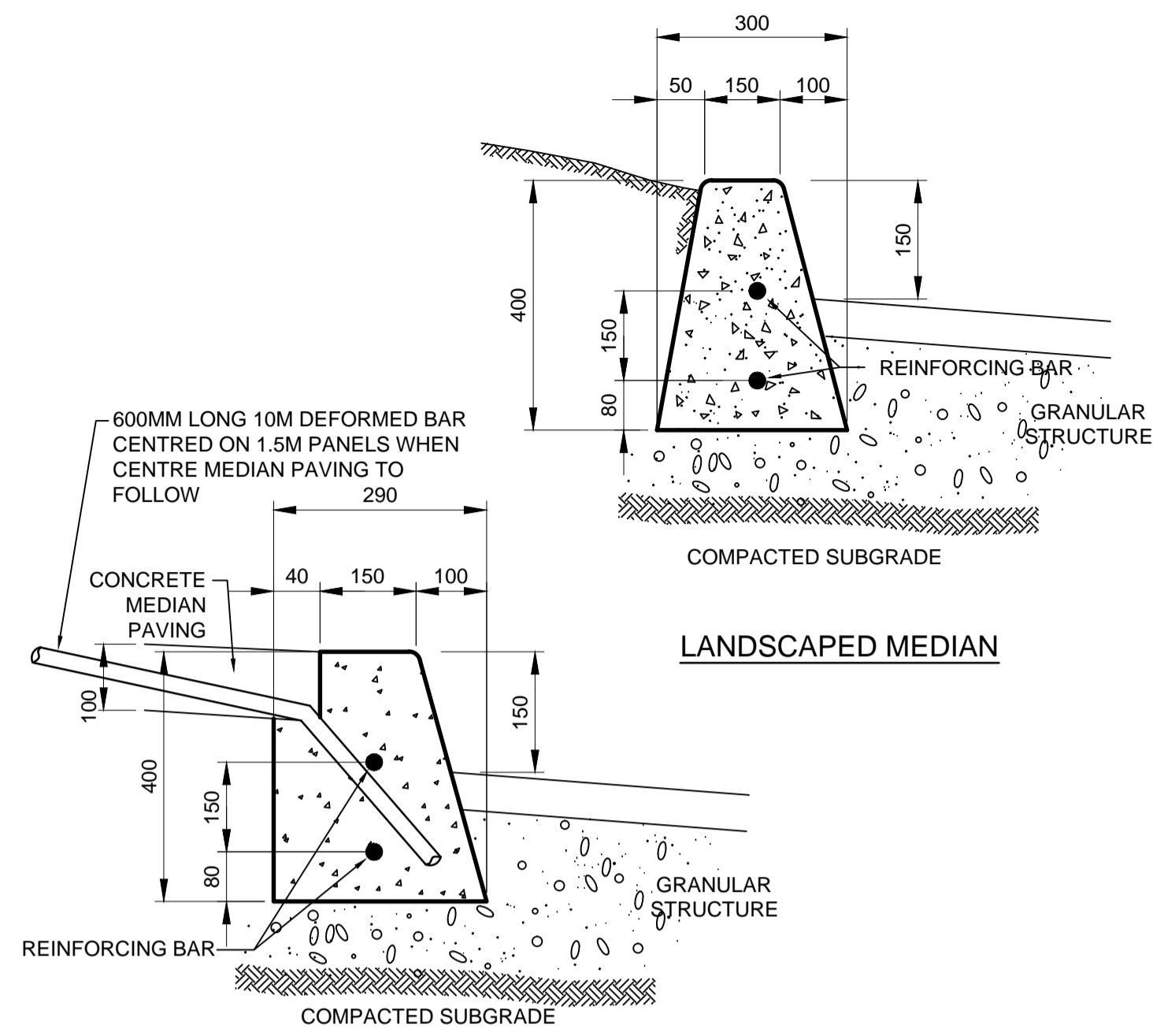
Client/client
Project title/Titre du projet

**NEW POLICE BUILDING
ONION LAKE, SASKATCHEWAN**

Approved by/Approve par
Designed by/Concept par
Drawn by/Dessine par
Project Manager/Administrateur de Projets
Architectural and Engineering Resources Manager/
Ressources Architectural et de Directeur d'ingénierie
Client/client
Drawing title/Titre du dessin

DETAILS

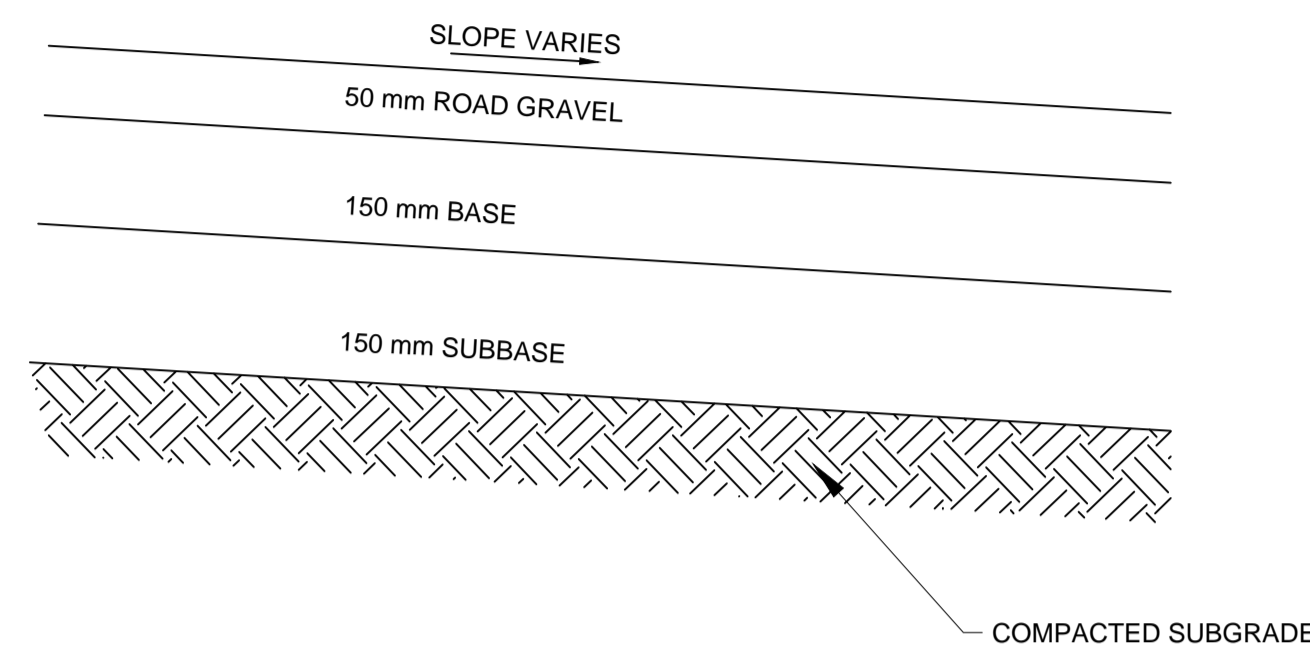
Project No./No. du projet	Sheet/ Feuille	Revision no./ La Révision no.
24/2014	C6	0



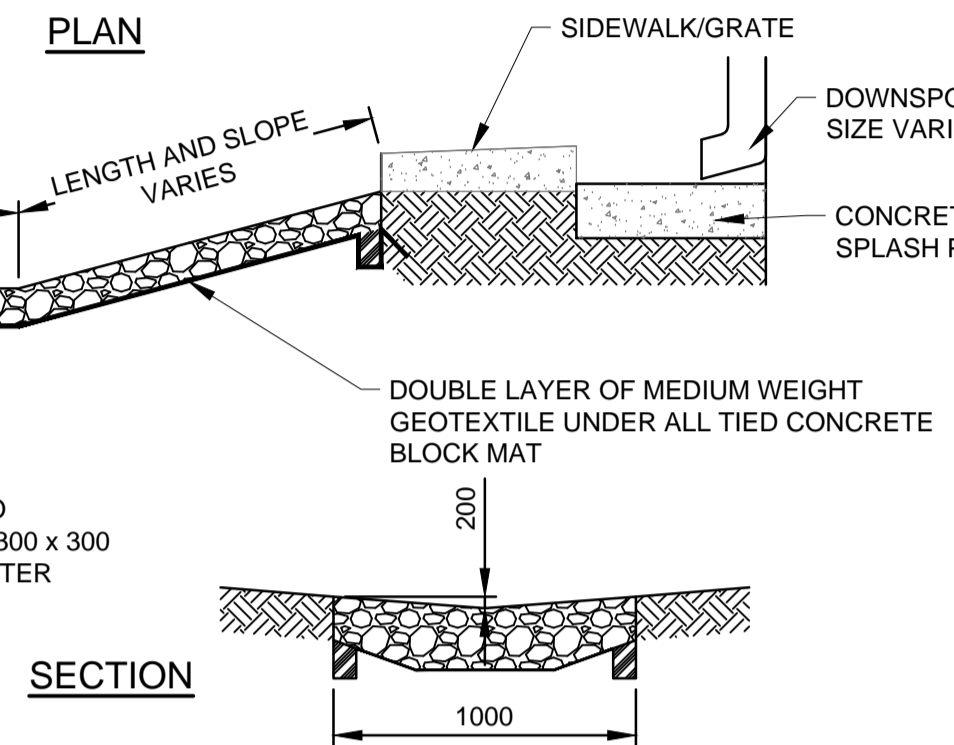
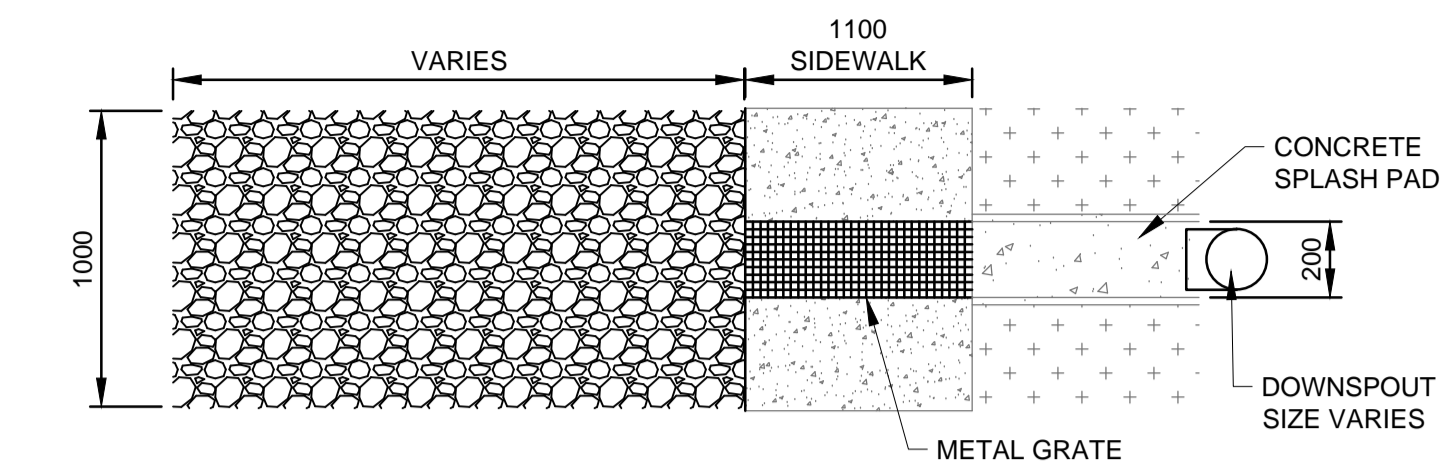
LANDSCAPED MEDIAN
HARD SURFACE MEDIAN

NOTES:

1. 10M REINFORCED BARS TO BE USED ON CURVED SECTIONS.
2. ALL DIMENSIONS ARE IN MILLIMETRES UNLESS OTHERWISE NOTED.



5 DETAIL N.T.S.
PARKING LOT STRUCTURE

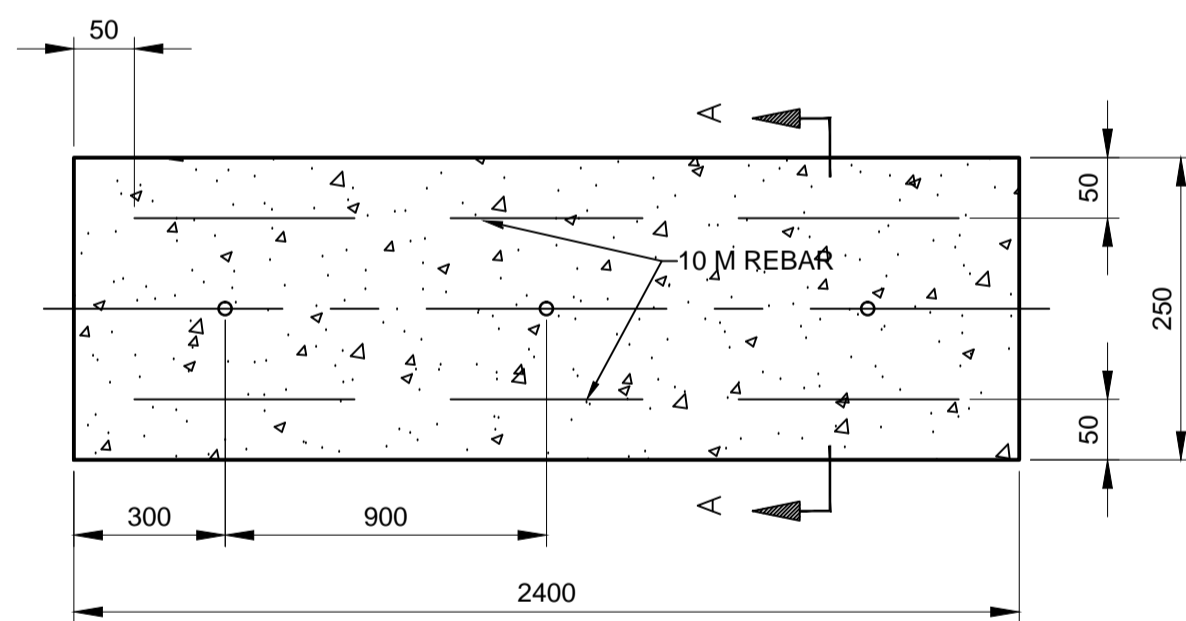


NOTES:

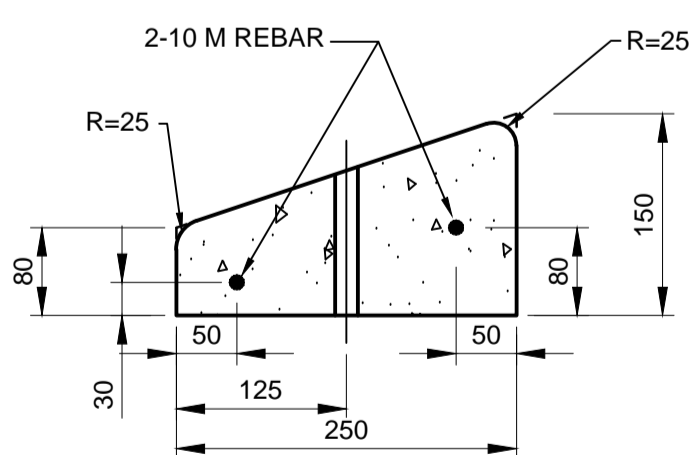
1. ALL DIMENSIONS ARE IN MILLIMETERS (mm) UNLESS OTHERWISE NOTED
2. RIP-RAP SHALL BE PLACED IN A DISHED CROSS SECTION WITH A MINIMUM DEPTH OF 200 mm
3. SHALL BE TIED CONCRETE BLOCK MAT

3 DETAIL N.T.S.
EROSION PROTECTION
TIED CONCRETE BLOCK MAT

1 DETAIL N.T.S.
CENTRE MEDIAN CURB STANDARD



PLAN OF CURB

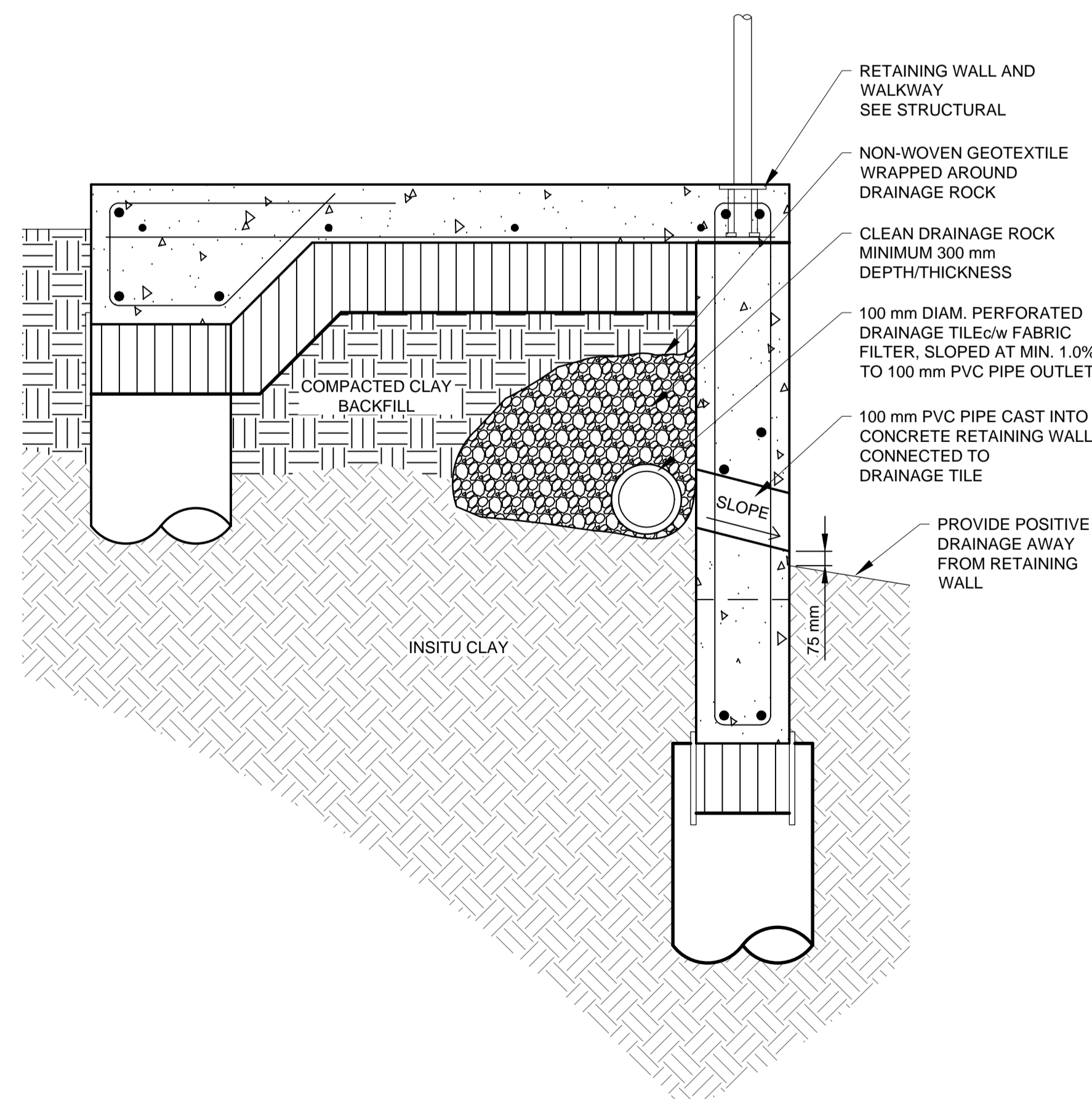


SECTION A-A

NOTES:

1. ALL DIMENSIONS ARE IN MILLIMETERS UNLESS OTHERWISE NOTED.
2. CURBS SHALL BE SECURED TO THE FOUNDATION WITH EITHER DRIFT PINS OR EPOXY RESINS. PINS SHALL BE 16Ø x 380 LG. EACH PIN SHALL HAVE A SHARP POINT & NO HEAD.

4 DETAIL N.T.S.
PINNED IN PLACE PARKING CURB



5 DETAIL N.T.S.
RETAINING WALL DRAINAGE TILE



ASSOCIATION OF PROFESSIONAL ENGINEERS AND GEOSCIENTISTS OF SASKATCHEWAN
CERTIFICATE OF AUTHORIZATION
ASSOCIATED ENGINEERING (SASK.) LTD.

NUMBER C116
PERMISSION TO CONSULT HELD BY:
DISCIPLINE: Municipal
SASK. REG. No.: 09862
SIGNATURE: [Signature]

ASSOCIATED ENGINEERING QUALITY MANAGEMENT
QUALITY MANAGER: Carina-Melanie
DATE: 2025/01/25
PROJECT CAD/LEAD: [Signature]
DATE: 2015/02/04

DO NOT SCALE DRAWINGS

Revision/Revision	Description/Description	Date/Date
5		
4		
3		
2		
1		
0	ISSUED FOR TENDER	2015/02/04

Project title/Titre du projet

**NEW POLICE BUILDING
ONION LAKE, SASKATCHEWAN**

Approved by/Approve par

Designed by/Concept par

Drawn by/Dessine par

Project Manager/Administrateur de Projets

Architectural and Engineering Resources Manager/
Ressources Architectural et de Directeur d'ingénierie

Client/client

Drawing title/Titre du dessin

DETAILS

Project No./No. du projet	Sheet/ Feuille	Revision no./ La Révision no.
24/2014	C7	0

