



RETURN BIDS TO:
RETOURNER LES SOUMISSIONS À:
Bid Receiving Public Works and Government
Services Canada/Réception des soumissions Travaux
publics et Services gouvernementaux Canada
800 Burrard Street, Room 219
800, rue Burrard, pièce 219
Vancouver
British Columbia
V6Z 0B9
Bid Fax: (604) 775-9381

SOLICITATION AMENDMENT

MODIFICATION DE L'INVITATION

The referenced document is hereby revised; unless otherwise indicated, all other terms and conditions of the Solicitation remain the same.

Ce document est par la présente révisé; sauf indication contraire, les modalités de l'invitation demeurent les mêmes.

Comments - Commentaires

Vendor/Firm Name and Address
Raison sociale et adresse du
fournisseur/de l'entrepreneur

Issuing Office - Bureau de distribution
Public Works and Government Services Canada -
Pacific Region
800 Burrard Street, Room 219
800, rue Burrard, pièce 219
Vancouver
British C
V6Z 0B9

Title - Sujet Nootka Light Tower Refurbishment	
Solicitation No. - N° de l'invitation F1700-150765/A	Amendment No. - N° modif. 001
Client Reference No. - N° de référence du client	Date 2015-11-03
GETS Reference No. - N° de référence de SEAG PW-\$PWY-031-7645	
File No. - N° de dossier PWY-5-38234 (031)	CCC No./N° CCC - FMS No./N° VME
Solicitation Closes - L'invitation prend fin at - à 02:00 PM on - le 2015-11-10	Time Zone Fuseau horaire Pacific Standard Time PST
F.O.B. - F.A.B. Plant-Usine: <input type="checkbox"/> Destination: <input checked="" type="checkbox"/> Other-Autre: <input type="checkbox"/>	
Address Enquiries to: - Adresser toutes questions à: Leung, Janie	Buyer Id - Id de l'acheteur pwy031
Telephone No. - N° de téléphone (604) 666-8228 ()	FAX No. - N° de FAX (604) 775-6633
Destination - of Goods, Services, and Construction: Destination - des biens, services et construction: DFO - Nootka - Vancouver Island, BC	

Instructions: See Herein

Instructions: Voir aux présentes

Delivery Required - Livraison exigée	Delivery Offered - Livraison proposée
Vendor/Firm Name and Address Raison sociale et adresse du fournisseur/de l'entrepreneur	
Telephone No. - N° de téléphone Facsimile No. - N° de télécopieur	
Name and title of person authorized to sign on behalf of Vendor/Firm (type or print) Nom et titre de la personne autorisée à signer au nom du fournisseur/ de l'entrepreneur (taper ou écrire en caractères d'imprimerie)	
Signature	Date

This Amendment 001 is raised to provide the list of Bidder's Conference attendees, address questions, provide the Bidder's Conference presentation deck, and provide the Bidder's Conference meeting minutes and site photos.

Bidder's Conference Attendees

Boston Construction Corporation
Deco Plus Painting & Contracting Ltd.
Seismic 2000 Construction Ltd.
Tri City Finishing
BROD Demolition

Questions and Answers

- 1) Can Public Works please give a contact recommendation on transportation company for "viewing" purposes, I assume there must be one that is used frequently, for both locations please if possible.
- a. CCG typically accesses both sites via CCG helicopters. Both helipads can accommodate a Bell 212 helicopter or smaller. Cape Beale can be accessed by small boats at high tide. Nootka can be accessed by small boats at any tide. Please notify Janie Leung at least 48 hours in advance of visiting either site so we can let the light keepers know. The following are helicopter charter companies in those areas that could provide helicopter transport to either site:

E&B Helicopters (Campbell River, Gold River, and Port Alberni)
Kestrel Helicopters (Parkesville)
Westcoast Helicopters (Campbell River and Nanaimo)

- 2) Have these projects gone out to tender and not gone ahead previously, if so when exactly were they put out to tender?
- a. No
- 3) What is likelihood of these projects going ahead and being approved? is this more of a formal budgeting or is it strong intent to have this work approved
- a. Construction budgets have been approved and there is strong intent to complete both works this fiscal year.

Meeting Questions and Follow-Up Answers

- 1) Are paint mock-ups required or included?
- a. They were eliminated due to potential changing conditions. Pull tests in accordance with ASTM D4541 can be done as work progresses to verify that a satisfactory bond can be achieved.
- 2) What arrangements need to be made for transport of hazardous material from the site, specifically using water and helicopter? And who is required to hold the License to Transport (LT)?
- a. Further clarification on this is being sought from Transport Canada and the British Columbia Ministry of Environment. A follow up response will be provided at a later date.
- 3) Do the light station have internet?
- a. Light keepers may have their own private satellite internet but this is not available to contractor. If contractor requires internet they will need to arrange.
- 4) Are the anchor bolt replacements at the bottom of the tower clarified in the tender package?

a. As indicated on Elevation 9A / S002, removal of four anchor bolts is required. These anchors are replaced with adhesive set anchors as shown on Section M / S003.

5) What are the moorage charges for the wharf/dock adjacent to the light station?

a. The Nootka or Yuquot wharf/docking fees are \$10 per tie-up or \$25 per boat per night. Contractors are encouraged to clarify fees and coordinate moorage directly with the Mowachaht/Muchalacht First Nation (250 283 2015).

6) Is there a specific specification for the shrink wrap or is a tarp system acceptable?

a. A specific enclosure system has not been specified. The design and detailing of the enclosure to meet containment requirements and provide an appropriate environment for construction activities is the responsibility of the contractor.

7) Is contractor required to prep to bare metal on all surfaces to be painted?

a. Yes

8) Will sand blasting be considered as a paint removal option?

a. It will be considered as a treatment option, but all sand blasting associated containment, environmental procedures, and health and safety requirements will have to be met.

9) What is happening with the outside rails on the vestibule or foyer stairs?

a. Railings are to be disconnected from vestibule door trim (screws removed), new cladding, door trim, and door will be installed and the railing is to be reconnected to the new door trim. Railing posts are cast into concrete.

Please see attached for the Bidder's Conference presentation deck, the Bidder's Conference meeting minutes, and site photos.

All other terms and conditions remain unchanged.

Contract No. F1700-150765

Bidders' Conference Meeting

TOWER REFURBISHMENT: NOOTKA LIGHT STATION

Oct 28, 2015

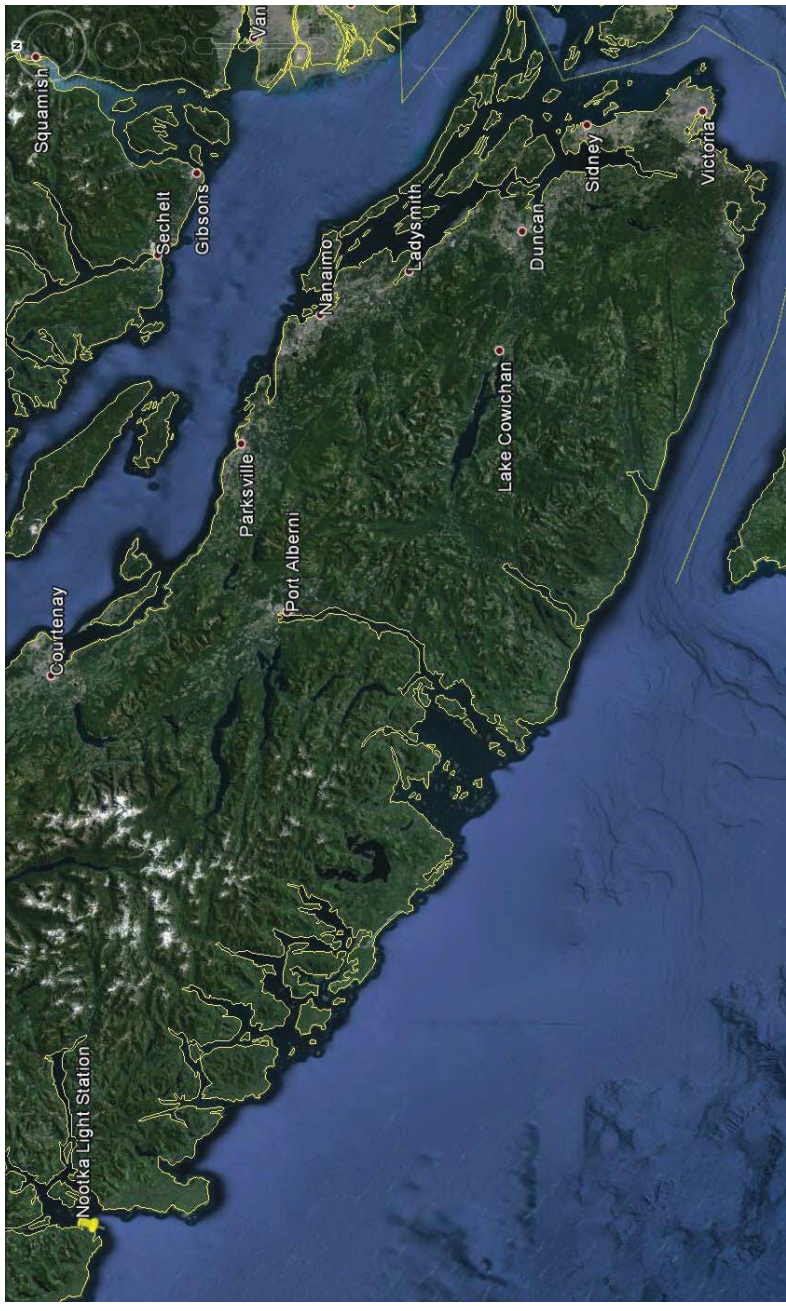
Bidders Meeting Agenda

- Introduction
 - Scheduling
 - Site Conditions
- Project – Technical Info
 - Questions?

INTRODUCTION

Nootka Light Station

Nootka Light Station is located on the west coast of Vancouver Island on a small island at the entrance to Nootka Sound.



Nootka Light Tower

The current light tower was built in 1958 and designated as a 'Heritage Lighthouse' earlier this year (2015).

The steel framed tower has 5 levels (lantern house is level 5) and is ~32 feet in height (lower level floor to lantern house floor). It supports an aluminum lantern house that houses the navigational aid (light). The structure is mounted on several concrete foundations.



Project Scope

The light tower refurbishment work will involve the following items (generally):

- Removal/disposal of existing asbestos sheathing.
- Removal of lead paint (stair shaft only).
- Repairs to structure and install of new members.
- Prep and paint of stair shaft and landings/stairs.
- Supply and install of new sheet metal cladding.
- Supply and install new windows and doors.

Document Changes and Addenda

This Bidders' Conference Meeting is for information purposes only. Items discussed here do not change any of the Contract Documents.

Bidders must rely on the published Addenda for official answers to questions that are raised during the meeting and not currently covered by the contract documents.

An Addenda will be posted with the questions and answers from this meeting.

Invitation to Tender

The Invitation to Tender document contains all the information on the following contract items:

- Bid submittal requirements
- Special Instructions to Bidders
- General Instructions – Construction Services
- Bid Security Requirements
- Insurance Conditions
- Contract Documents
- Bid and Acceptance Form

Questions and clarifications with these or other items outside this meeting are to be directed to the PWGSC Supply Specialist, Janie Leung.

Project Personnel

- Project Contact (DFO) – John Makkinga, Eng Tech
- Project Manager (DFO) – Shaun Zealand, Eng
- Supply Specialist (PWGSC) – Jaine Leung
- Project Manager (WSP) – Randy Emery, PEng
- Building Envelope (GOAL) – Greg Ovstaas, PEng

Scheduling

- **Nov 4th**: Bid conference meeting questions and answers to be posted
- **Nov 5th**: Bid question deadline
- **Nov 10th**: Bid closing
- **Nov 20th**: Proposed contract award

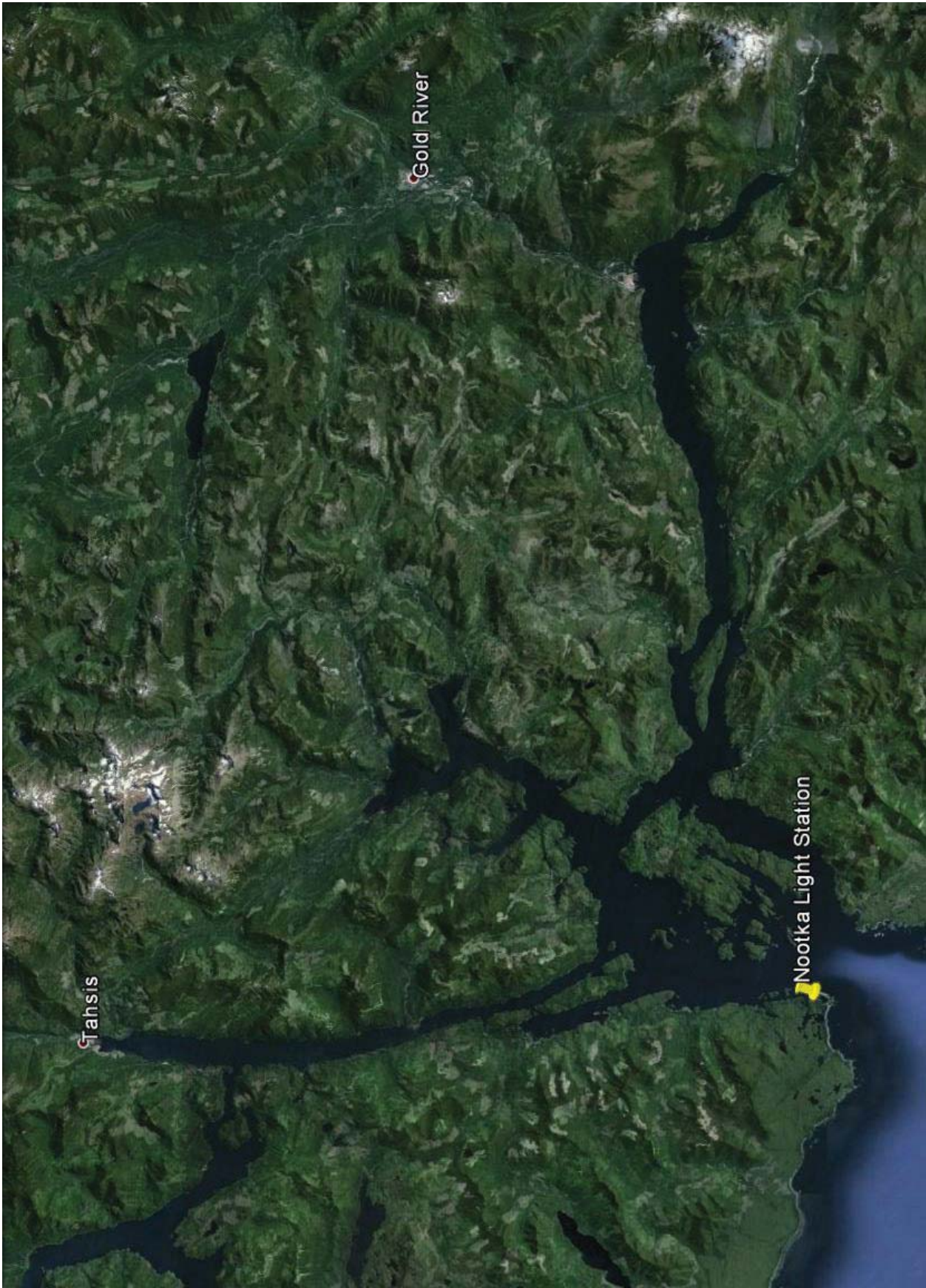
Construction scheduling to be done after contract award. Work to be completed by Mar 6, 2016.

SITE CONDITIONS

Site Access

Nootka Light Station is most easily accessed by helicopter or ship.

CCG vessels (ships) typically deliver materials to the site via a tender workboat using the site's derrick and tramway, but this is very weather dependent.





Site Access – Lower Station



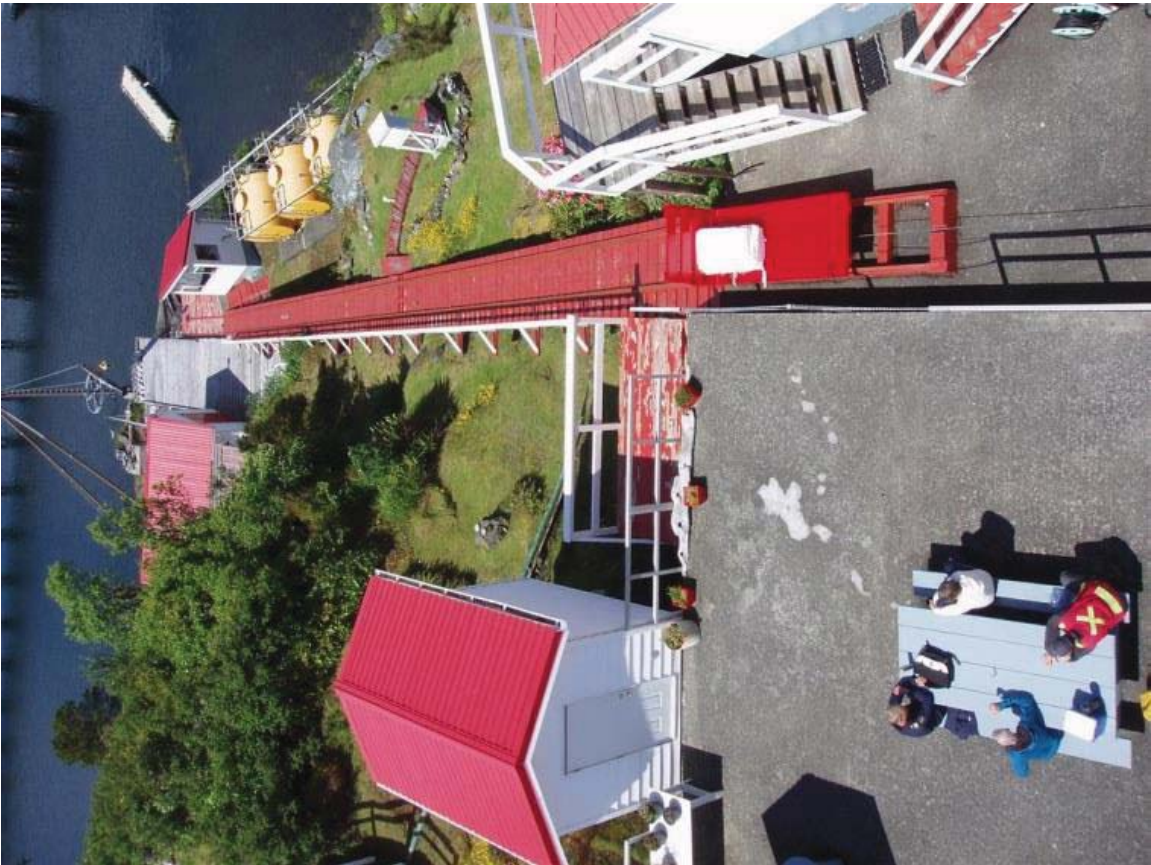
Site Access – Upper Station



Derrick and Tramway Use

CCG workboats are offloaded with a derrick system that is rated at a 1000lb Safe Working Load limit. Light materials can be moved from lower station (derrick landing) to upper station via tram, safe load for tram is 300 lbs.

Use of the derrick or tram must be coordinated with DFO/CCG in advance and the light keepers are the only people permitted to operate.



Site Storage



Storage space for equipment and materials on-station is limited.

Helipad Rating and Usage

The helicopter landing pad is timber construction. The largest helicopter it is rated for is a Bell 212.

The landing pad area is ~35' x 48'

Use of the helipad needs to be coordinated in advance with the CCG and the DFO Project Contact (or DFO Project Manager).

Helipad



Helipad Access



Site Accommodations

There is a residence on-station available for accommodations.

Residence has three bedrooms, living room, one bathroom, and kitchen. Basement is unfinished, part-of basement space is a cistern (concrete box), and some storage space.

Use of the accommodations is \$10 per night per person (taxes included) payable to the light keeper.

The contractor will be liable for any damages to the residence and is expected to keep residence clean.

Communications

There is no cell coverage on site.

Site has VHF radio and ALN phone circuit for communications.

Contractors are permitted to use ALN phone circuit in emergencies.

Generators and Power Usage

Site is powered by two diesel generators (15kW and 23kW).

Generators operate as a duty unit and back-up unit.

Site power through the generator is available to the contractor, however any power requirements beyond the safe loads of the generators are to be provided by the contractor.

Site Water Supply

The site's potable water supply is from collected rainwater that is stored in cisterns (in basements) and then filtered.

Water restrictions can be common depending on rainfall frequency and amounts, conservation of water often is required.

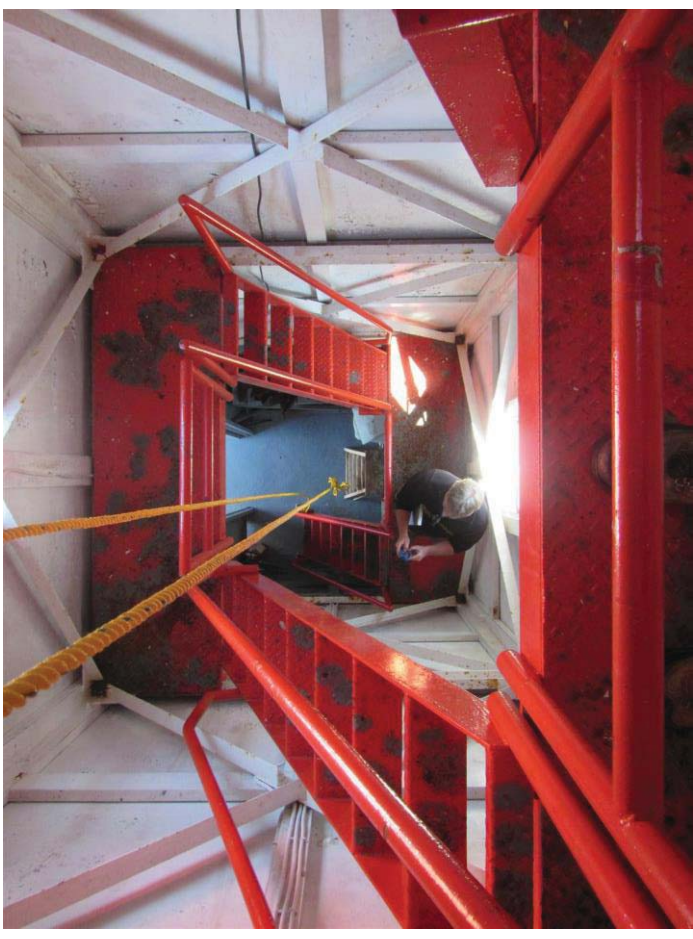
Water may be available for construction use. If additional water is required for construction purposes (more than available at 'contractor residence' cistern), it is the responsibility of the contractor to supply.

PROJECT – TECHNICAL INFO

WSP and GOAL Engineering project comments.

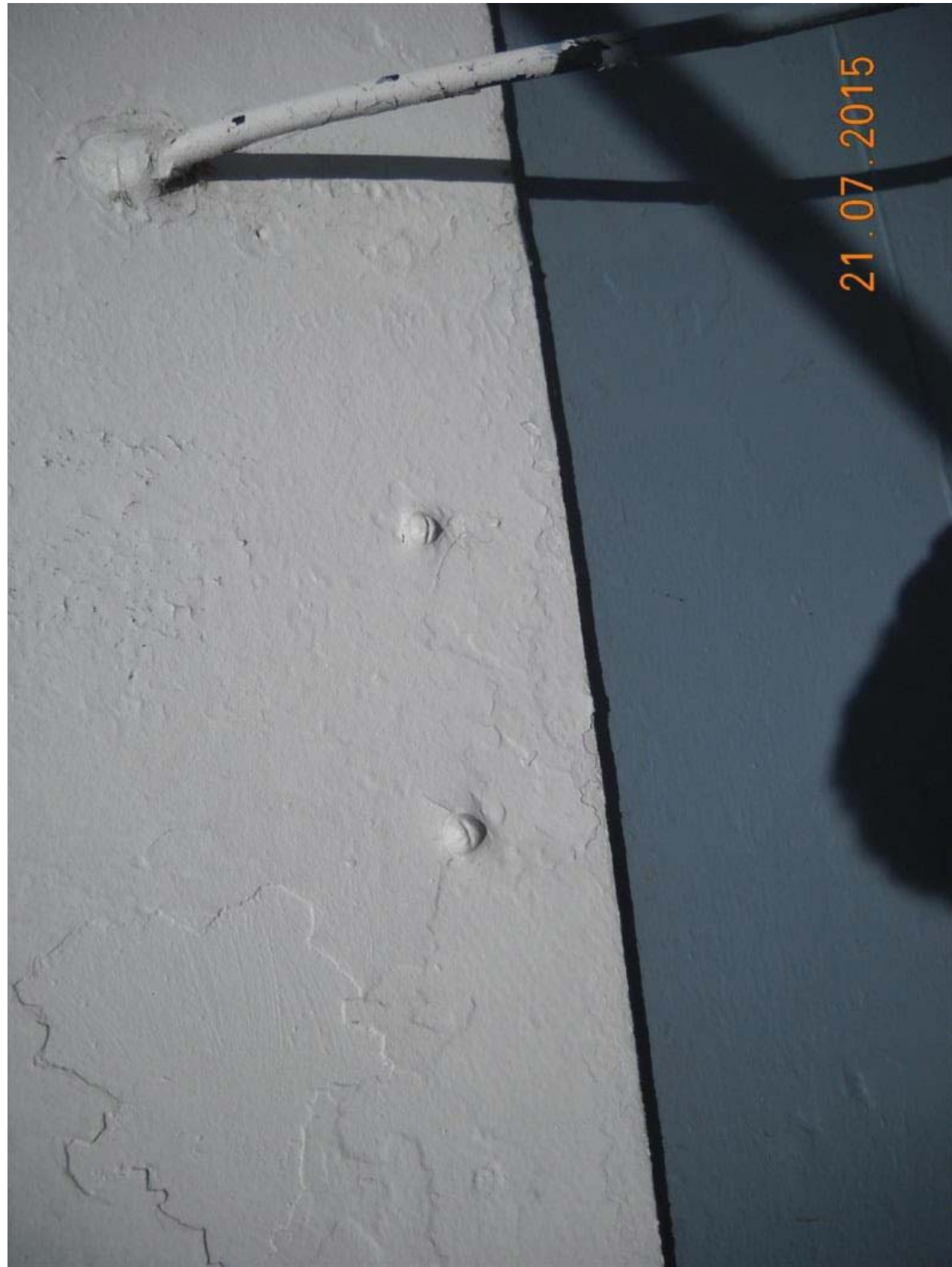


Two antennas attached to tower, do not work affront.



Tower interior. Timber (2x4, 2x6) nailers bolted to steel frame, decayed at lower levels, asbestos sheathing secured-to with old screws.





QUESTIONS?

Document 001

PREBID MEETING AGENDA

Project: Tower Refurbishment – Nootka Lighthouse
Project No.: F1700-150765 **Date:** Oct 29, 2015 **Time:** 2:30pm PST
Meeting Location: Victoria CCG Base, 25 Huron St, Victoria, BC V8V 4V9, Wedge Meeting Room

INTRODUCTIONS:

- Name, location and general scope of project
- Sign-in sheet
- Purpose of meeting
- Bid documents changes and Addenda clarifications
- Contract conditions, insurance requirements, bid bonds, and bid submittals
- Project personnel and responsibilities

SCHEDULING:

- Bid conference notes, questions, and answers – posted by Nov 4th
- Bid question deadline – Nov 5th
- Bid closing – Nov 10th
- Contract award (tentatively) – Nov 20th
- Contract scheduling after award

SITE CONDITIONS:

- Site access options / restrictions
 - o Material and equipment transport options
 - o Site storage areas
 - o Derrick and tramway use requirements
 - o Helipad rating and usage requirements
- Site accommodations and facilities
- Communications limitations
- Generators and power usage
- Site water supply

PROJECT:

- Removal and disposal of asbestos sheathing
- Removal of lead paint (stair shaft only)
- Repairs to structure and install of new members
- Prep and painting of stair shaft, landings, and stairs
- Supply and install of new sheet metal cladding
- Supply and install of new windows and doors

QUESTIONS:

All tender questions from the meeting that are not covered in the project tender package will be documented in writing and posted with official answers as an Addenda.

PREBID MEETING MINUTES

DISCUSSION NOTES AND COMMENTS:

- E&B Helicopters out of Gold River is closest charter helicopter company.
- Boat access is typically from Tahsis, BC. There can be some rough areas on route from Tahsis near Nootka Light Station where exposed from the west.
- Accommodation costs at Nootka's three bedroom crew house is \$20 per night per person. Each room has a double bed and there are two futons available in living/other rooms.
- Crew house cistern is 8 feet by 25 feet by 4.75 feet in depth. Approximately 25,000 liters will be available for living and construction use at start of project. Any additional water requirements will be at the contractor's expense.
- Tower antennas (2) to remain on exterior of tower throughout project.
- Tower electrical has been removed and temporary wiring provide for operation of the Navigation Aid (light) during work.
- Adjacent wharf/dock is not owned by CCG/DFO. Boats can be moored there and there is a foot trail around to the light station.
- Intent of tender package was for preparation and painting of all steel work on the inside of the tower.
- DFO/CCG will provide helicopter transportation for the 9 month warrantee inspection.
- 3 -120v 15amp circuits will be provided generator building adjacent to tower and 1 – 240v 30 Amp could be provided, any further power requirements will have to be provided by the contractor via additional generator(s).
- Specification Section 07 42 13 has a typo and will be addressed as a formal addenda
 - Clause 2.1.1.3.1 should read "Profile to be 300mm wide by 40 mm deep"
- Site photos will be posted with the tender documents as a pdf file.
- Site inspections by consultants will be periodic and scheduled around construction schedule. 4 site visits by each consultant are planned, but additional inspection trips will be arranged when required.
- Specifications include detailed requirements for a plywood deck at bottom of tower to support the scaffolding and containment of all the asbestos and lead paint coatings to be removed. The deck is to be designed by a structural engineer and sealed shop drawings are to be submitted as specified in section 02 82 00.02 clause 3.2.4.1 and 2.
- Underside of lantern house deck requires prep and painting, but top of lantern deck and side edges do not.
- Anchors bolts do not require replacement on the stair shaft framing. There is a repair detail in the tender package for the new corner anchor plates. Do not assume the anchor plate details on drawing are accurate. It is recommended that templates are used for new corner anchor plates at each location prior to fabrication to ensure fit. Field drilling of holes for bolts is acceptable.
- As indicated on Plan 1 / S003, the existing bolts securing the lantern house to the platform are to be replaced.



2015_07_14_Nootka_Island_020_199 crop2 (Large).jpg



IMG_0675 (Large).JPG



IMG_0628 (Large).JPG



IMG_0636 (Large).JPG



IMG_0637 (Large).JPG



IMG_0630 (Large).JPG



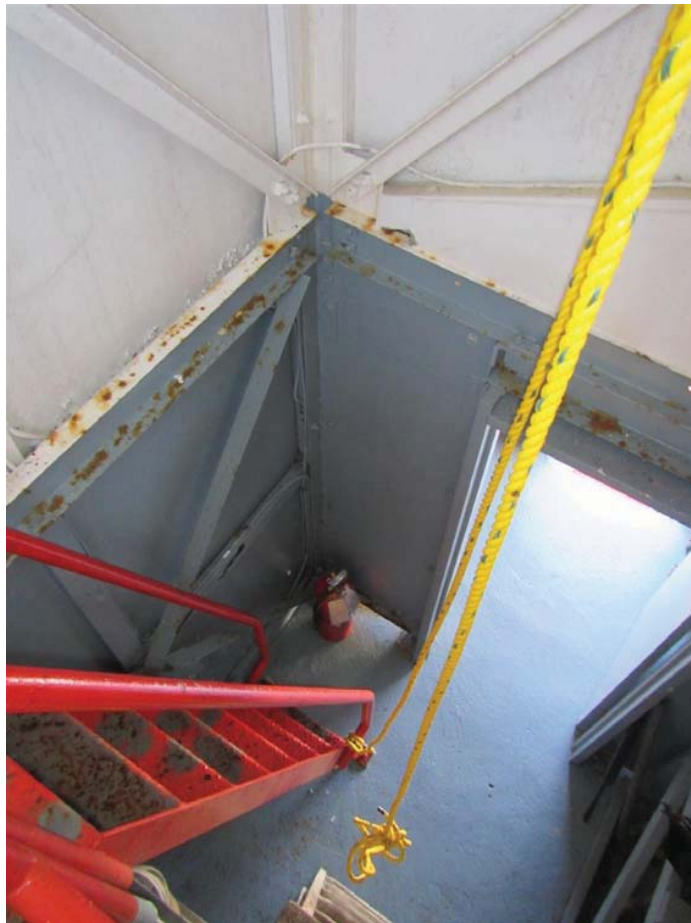
IMG_0638 (Large).JPG



IMG_0641 (Large).JPG



IMG_0652 (Large).JPG



IMG_0651 (Large).JPG



IMG_0657 (Large).JPG



P5260612 (Large).JPG



IMG_0661 (Large).JPG



IMG_0663 (Large).JPG



IMG_0667 (Large).JPG



IMG_0666 (Large).JPG



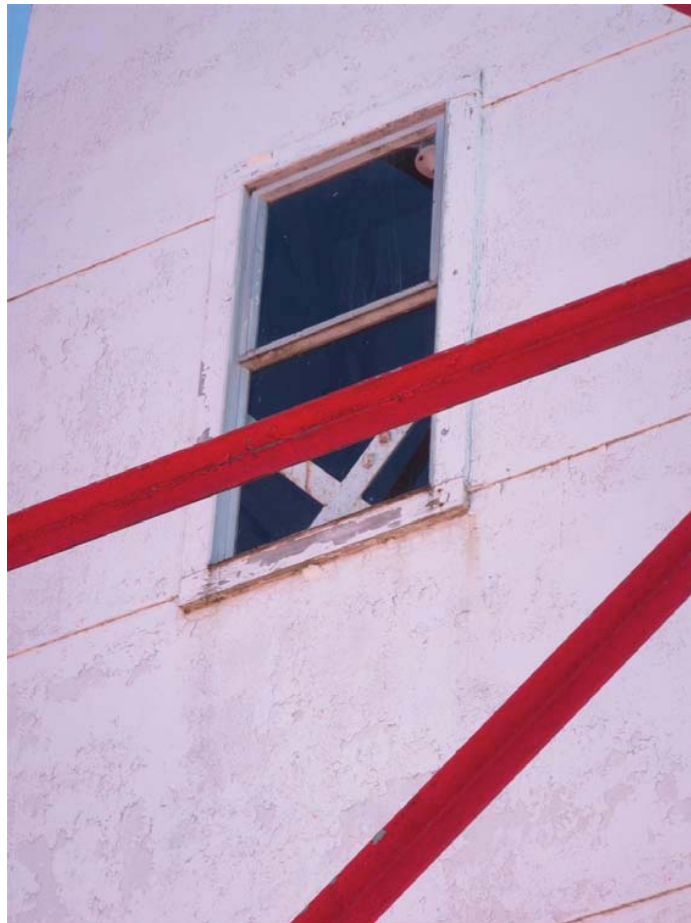
P5260595 (Large).JPG



IMG_0827 (Large).JPG



P5260601 (Large).JPG



IMG_0673 (Large).JPG



P9300804 Nootka Princ-IRBRes (Large).JPG