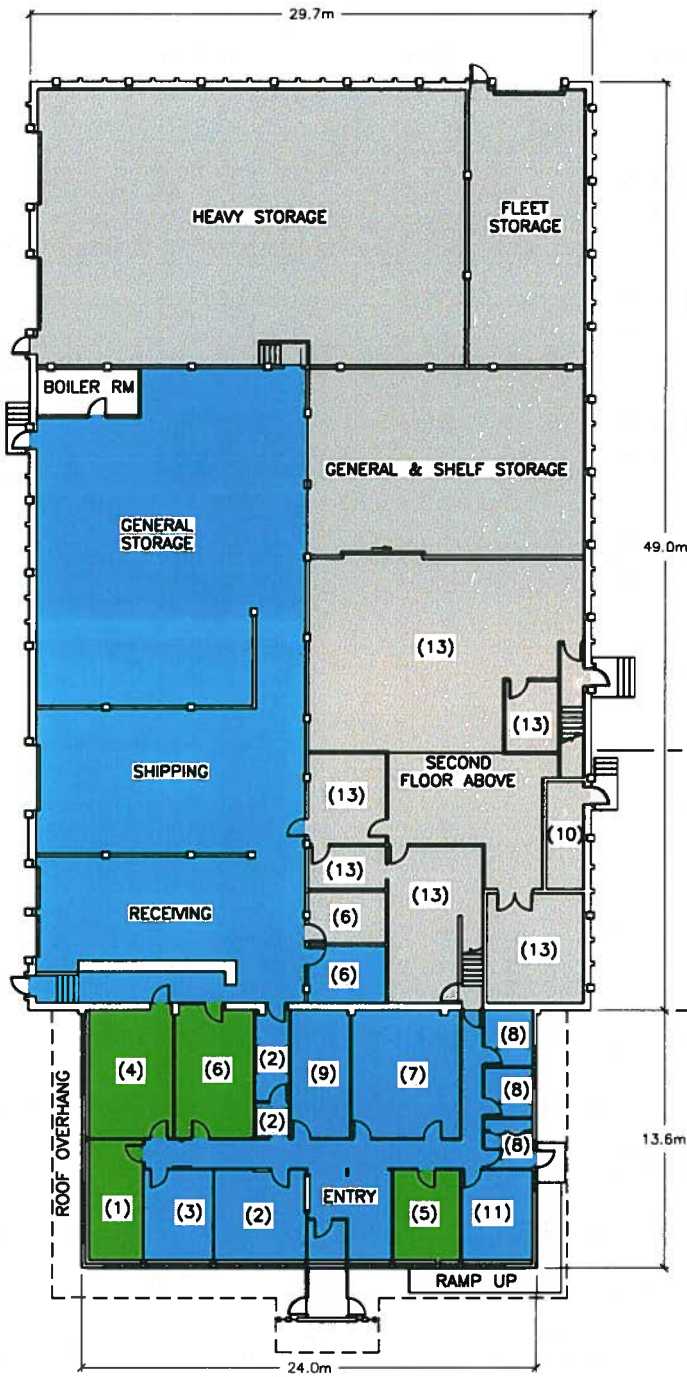
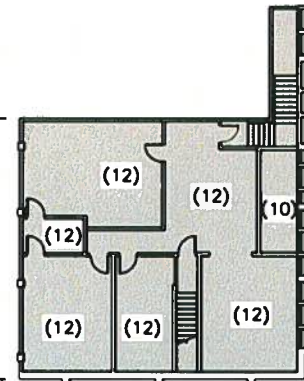


LEGEND

- (1) SUPRV. ELECTRONICS MAINTENANCE (TS)
- (2) GENERAL ADMINISTRATION
- (3) (VACANT) EX NAVAIDS
- (4) (VACANT) EX PERSONNEL
- (5) SUPRV. FACILITIES (TS)
- (6) MATERIAL MANANGEMENT
- (7) BOARD ROOM
- (8) WASHROOMS/JANITOR
- (9) STATIONARY STORE ROOM
- (10) ELECTRICAL ROOM
- (11) LUNCH ROOM
- (12) SHIP SAFETY (TRANSPORT CANADA)
- (13) ELECTRONICS EQUIP. MAINTENANCE (TS)



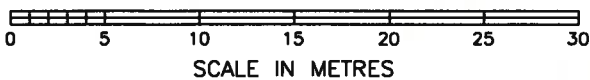
FIRST FLOOR PLAN



SECOND FLOOR PLAN

NOTES:

Drawing produced from and replaces BCIP Chart 3.6, R3, April 95 and updated from March 97 trip



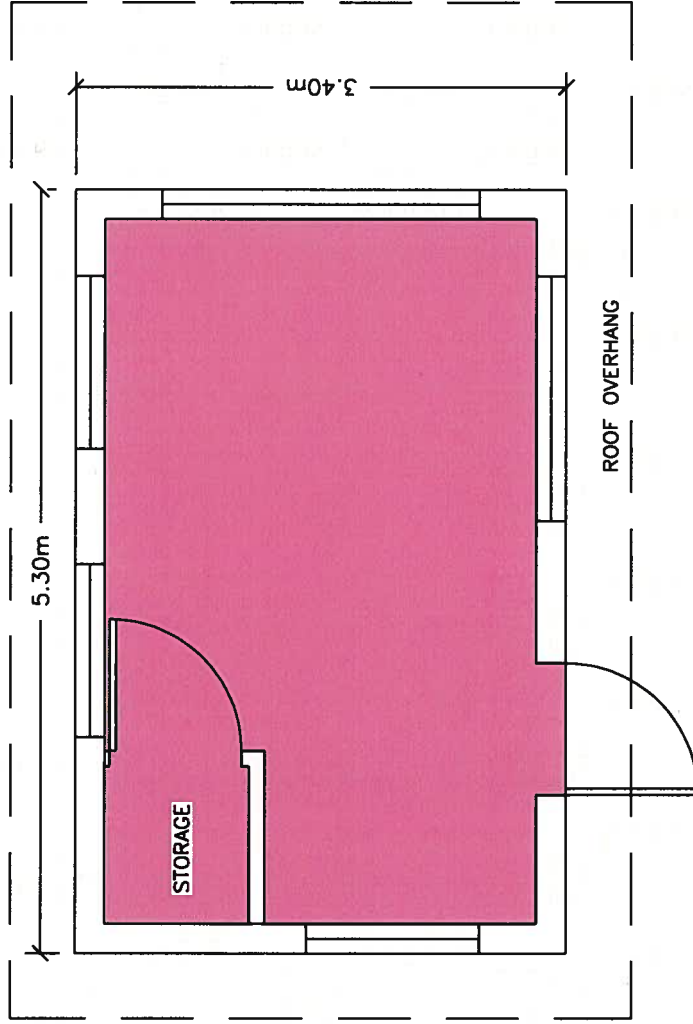
**CANADIAN COAST GUARD
PACIFIC REGION
FACILITIES ENGINEERING**

**PRINCE RUPERT BASE
ADMINISTRATION/STORES BUILDING**

Date: **97-05-07**

Drawn By: **W.E.W.**

Drawing No: **PRBASE-2**



NOTES:

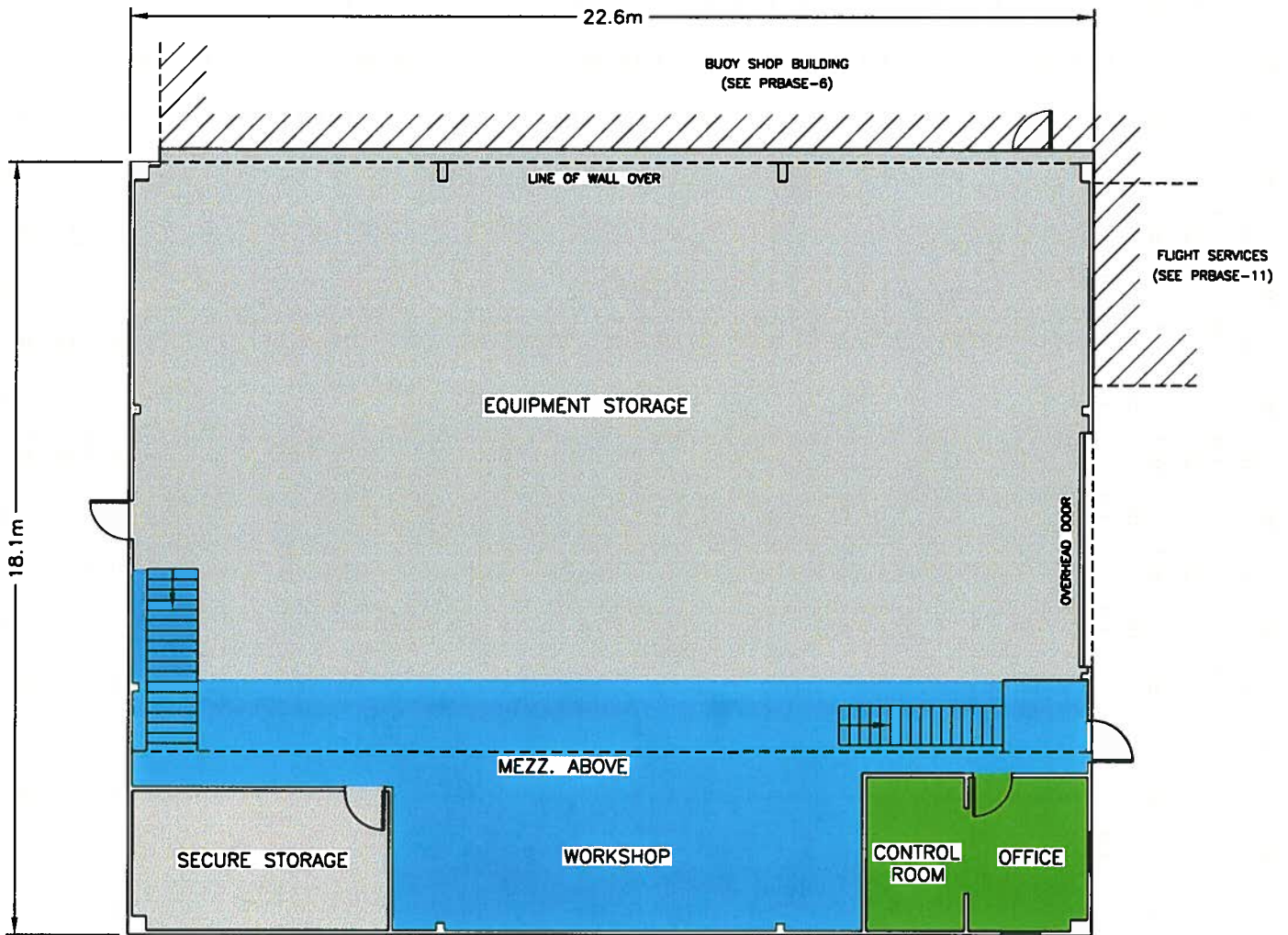
1. Drawing produced from September 97 trip measurements.
2. Drawing reproduced in Oct. 2010, scaled from paper copy.
original electronic not found (S.James)



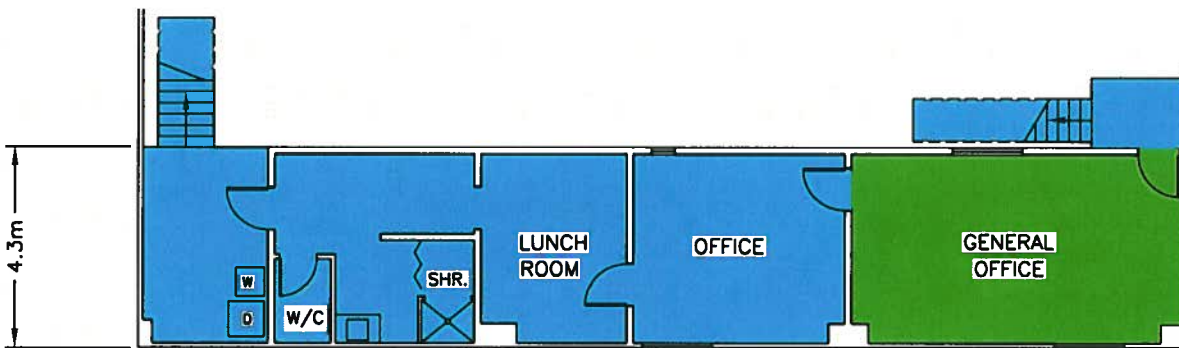
**CANADIAN COAST GUARD
PACIFIC REGION
FACILITIES ENGINEERING**

**PRINCE RUPERT BASE
WATCHMANS SHED**

Scale	97-11-14	Drawn By	W.E.W.	Drawing No.	PRBASE-13
-------	----------	----------	--------	-------------	-----------



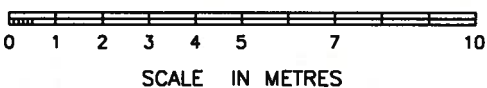
GROUND FLOOR PLAN



MEZZANINE FLOOR PLAN

NOTES:

Drawing produced from and replaces BCIP Chart 3.12, R3, February 96



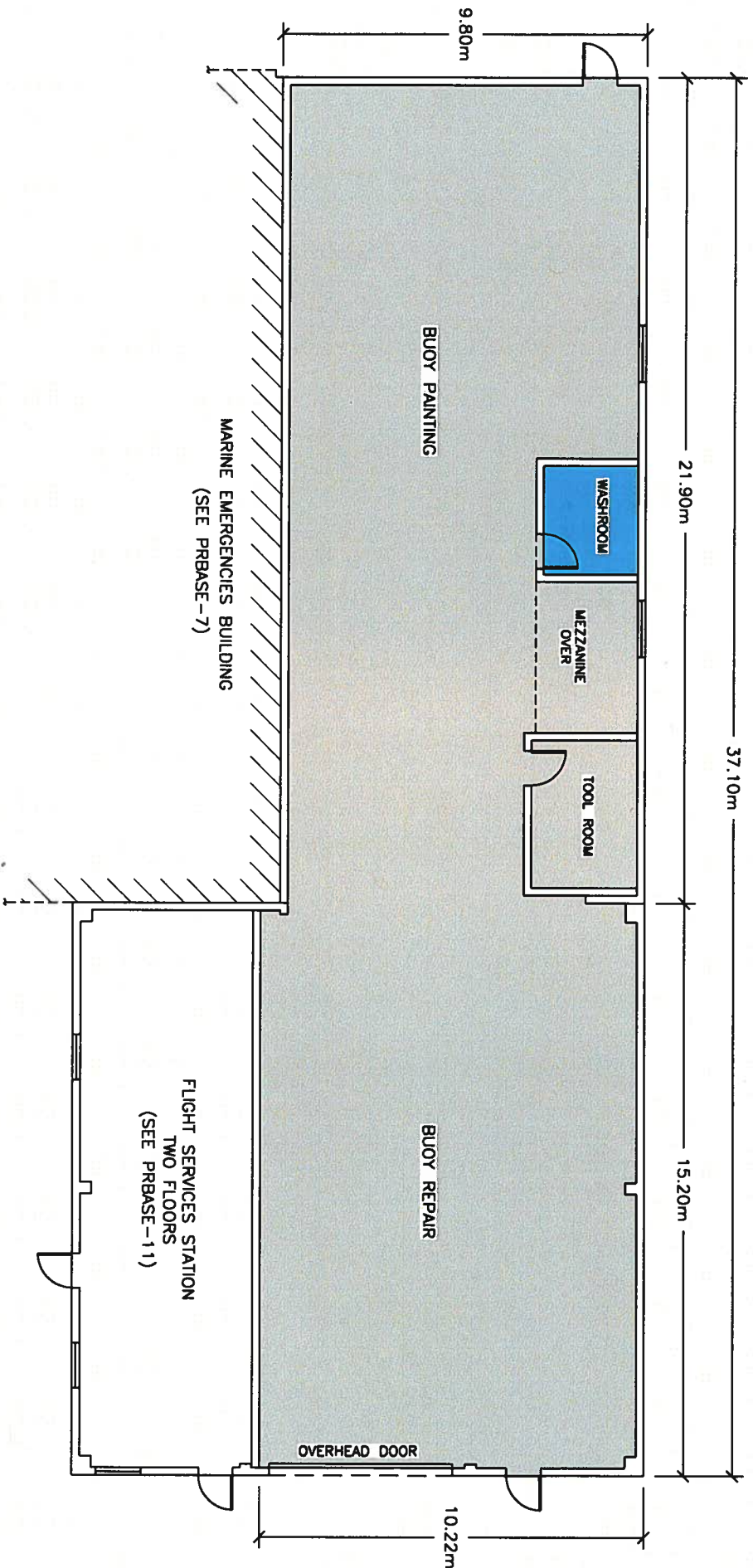
**CANADIAN COAST GUARD
PACIFIC REGION
FACILITIES ENGINEERING**

**PRINCE RUPERT BASE
MARINE EMERGENCIES
STORAGE BUILDING**

Date:
97-05-29

Drawn By:
W.E.W.

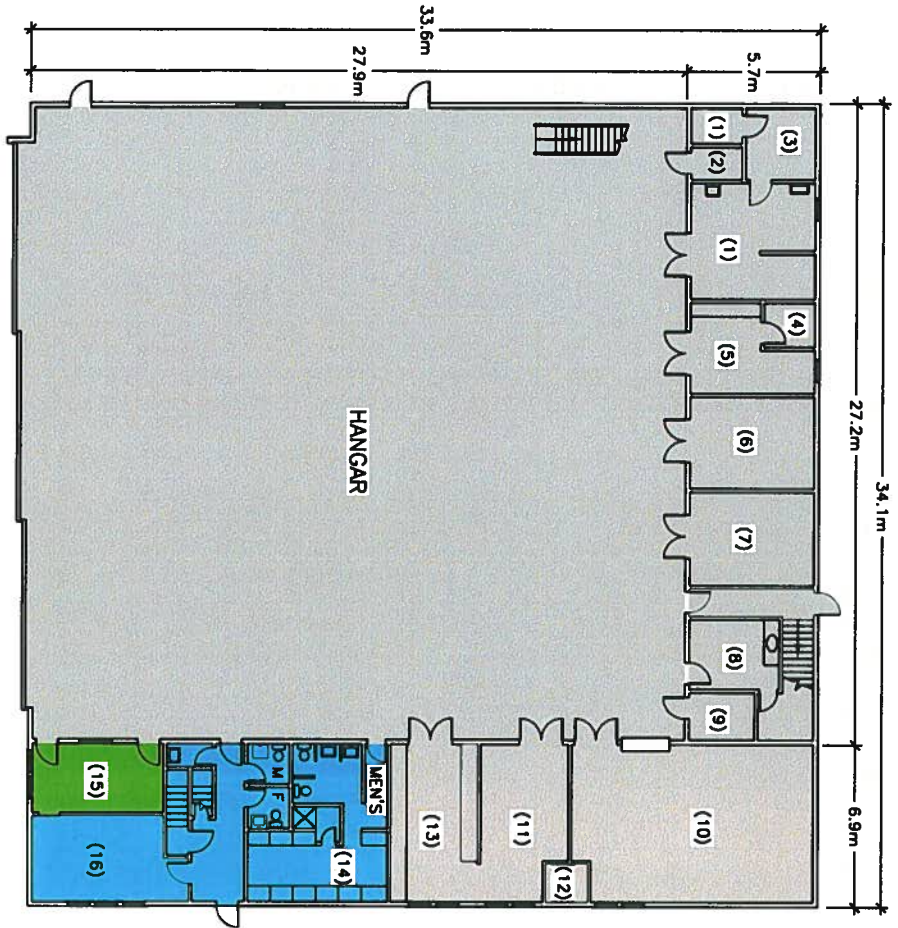
Drawing No:
PRBASE-7



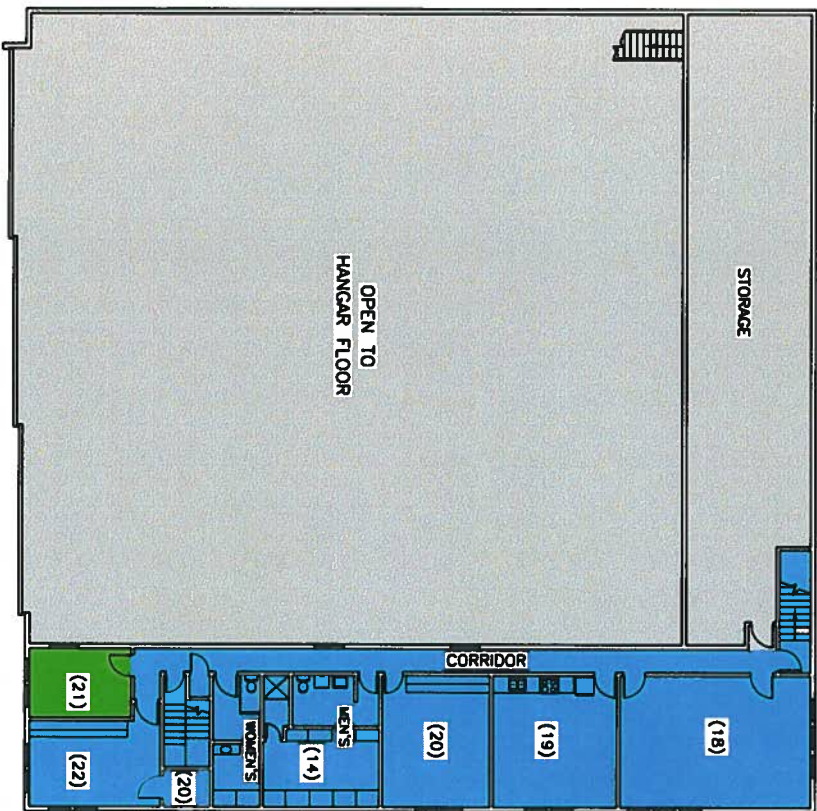
NOTES:
 Drawing produced from and replaces BCIP Chart 3.7, R2, November 94



CANADIAN COAST GUARD PACIFIC REGION FACILITIES ENGINEERING		
PRINCE RUPERT BASE BUOY MAINTENANCE SHOP		
Date 97-10-23	Drawing Type W.E.W.	Drawing Title PRBASE-8

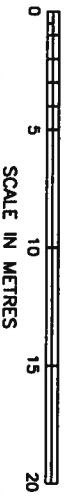


LOWER FLOOR PLAN



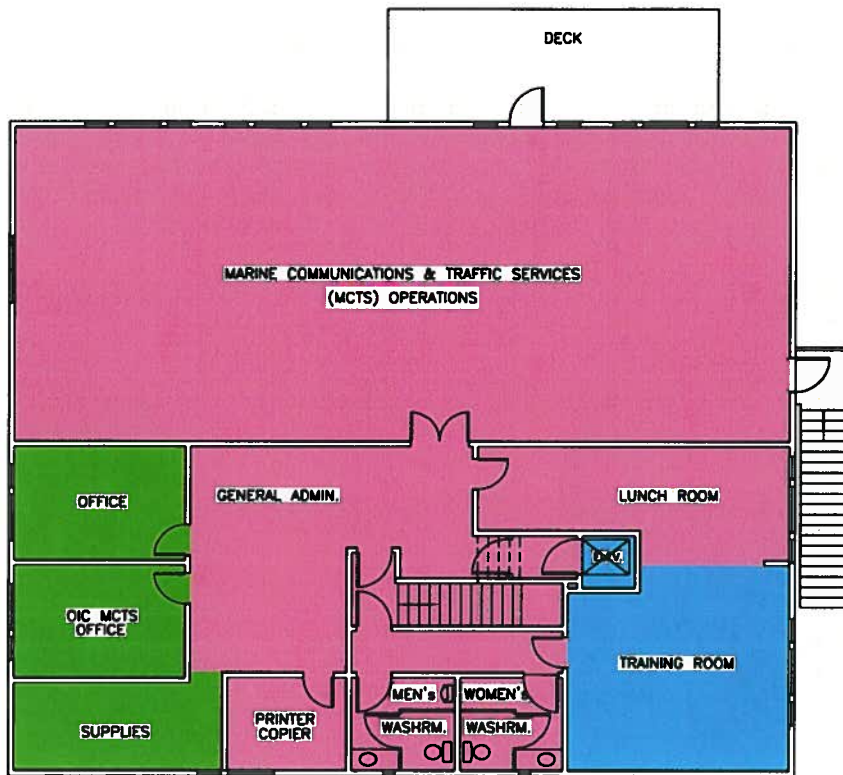
UPPER FLOOR PLAN

NOTES:
 Drawing produced from and replaces BCIP Chart 3.10
 and updated from March 97 trip

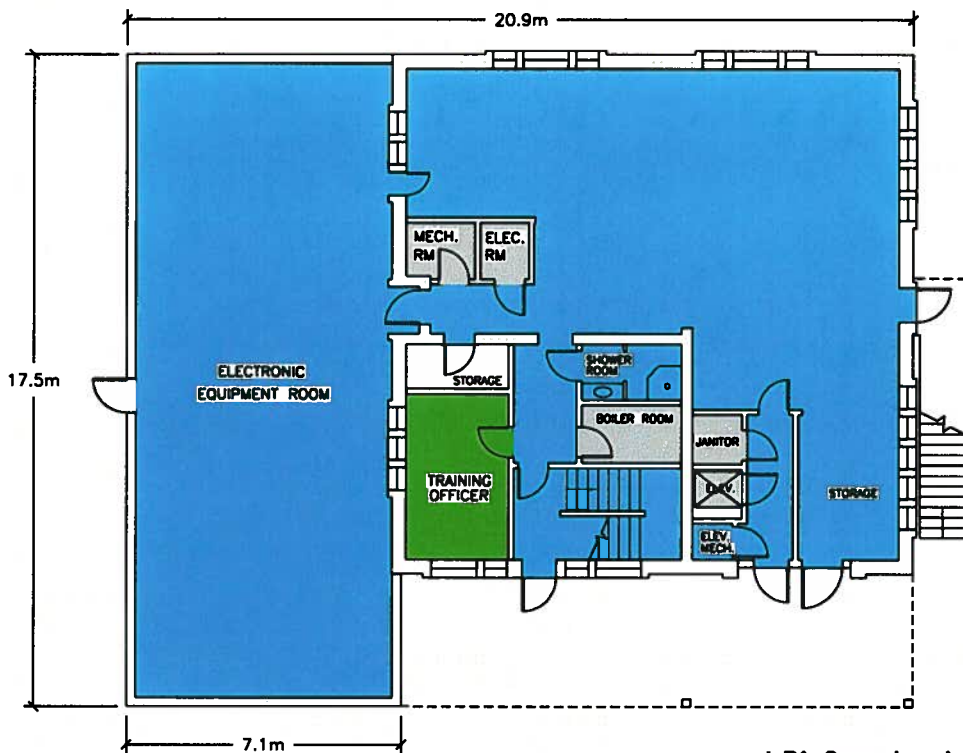


- ROOM LEGEND**
- | | |
|------------------------|-----------------------|
| 1) PAINT STORAGE/SHOP | 12) MECH. (SPRINKLER) |
| 2) OIL STORAGE | 13) ENGINE SHOP |
| 3) STORAGE (FLAMMABLE) | 14) LOCKER ROOMS |
| 4) BATTERY CHARGING | 15) CHIEF ENGINEER |
| 5) ELECTRICAL SHOP | 16) PASSENGER WAITING |
| 6) ELECTRICAL ROOM | 17) TRAINING ROOM |
| 7) MECHANICAL ROOM | 18) LUNCH ROOM |
| 8) FIRST AID | 19) PILOTS READY ROOM |
| 9) TOOL CRIB | 20) FAC'S & COPIER |
| 10) PARTS & STORAGE | 21) CHIEF PILOT |
| 11) MACHINE SHOP | 22) GENERAL OFFICE |

CANADIAN COAST GUARD		
PACIFIC REGION		
FACILITIES ENGINEERING		
PRINCE RUPERT BASE		
HELICOPTER HANGAR		
Date:	Drawn By:	Drawing No:
97-07-15	W.E.W.	PRBASE-5



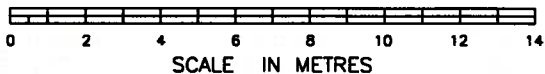
UPPER FLOOR PLAN



GROUND FLOOR PLAN

NOTES:

Drawing produced from and replaces BCIP Chart 3.8, R1, March 95



R1 General update from Sept 97 trip

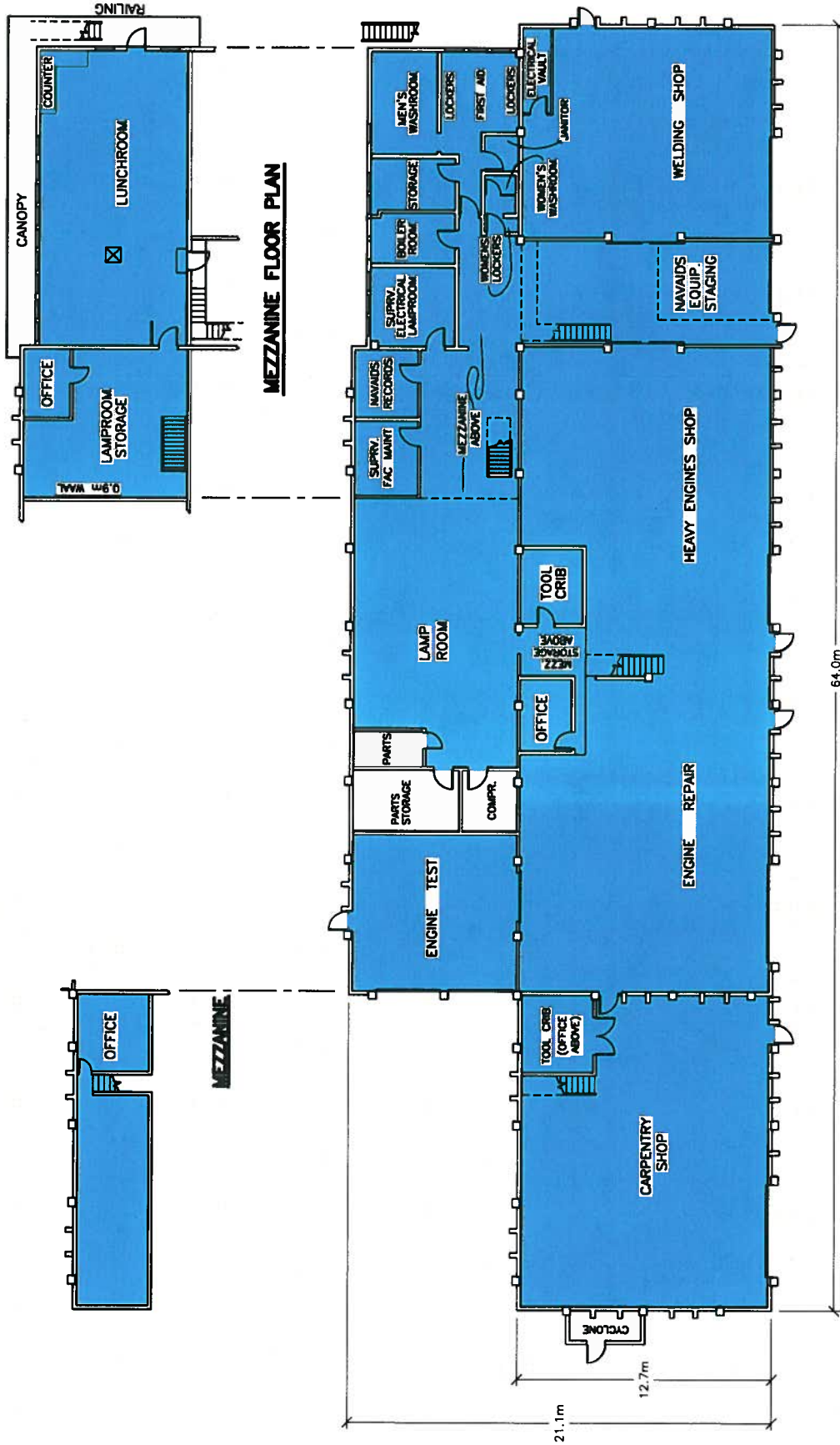
**CANADIAN COAST GUARD
PACIFIC REGION
FACILITIES ENGINEERING**

**PRINCE RUPERT BASE
MCTS BUILDING**

Date: 97-05-29

Drawn By: W.E.W.

Drawing No: PRBASE-4



CANADIAN COAST GUARD PACIFIC REGION FACILITIES ENGINEERING	
PRINCE RUPERT BASE WORKSHOP BUILDING	
Date: 97-05-12	Drawing No: PRBASE-3
Drawn By: W.E.W.	

GROUND FLOOR PLAN

NOTES:
 Drawing produced from and replaces BCIP Chart 3.9, R1, October 95
 and updated from March 97 trip

