

PARTIAL LEVEL 1 LIGHTING DEMOLITION LAYOUT
SCALE: 1:50

DEMOLITION LEGEND

- REMOVE 1X4 FLUORESCENT FIXTURE AND ALL ASSOCIATED CONDUIT AND WIRING BACK TO SOURCE. EXCEPT FOR EMERGENCY POWER CIRCUITS INDICATED WHICH ARE TO BE REUSED AS INDICATED WITH NEW LIGHTS
- REMOVE FIXTURE ON EMERGENCY CIRCUIT. MAKE CIRCUIT GOOD. REUSE WITH NEW FIXTURE
- REMOVE TOGGLE SWITCH AND ALL ASSOCIATED CONDUIT AND WIRING BACK TO SOURCE.
- EXISTING 1X4 FLUORESCENT FIXTURE TO REMAIN.
- EXISTING TOGGLE SWITCH TO REMAIN.

LINETYPE LEGEND

- EXISTING TO REMAIN
- REMOVE, UNLESS NOTED OTHERWISE.

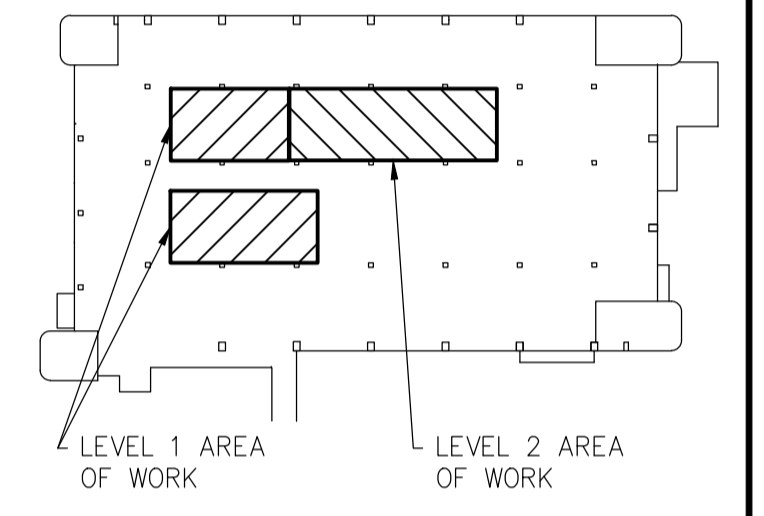
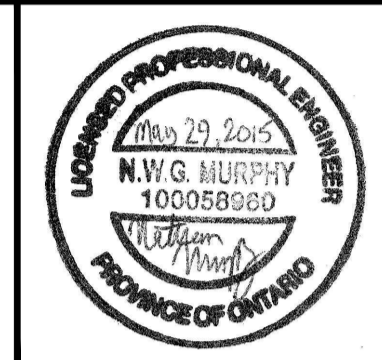
GENERAL /LIGHTING DEMOLITION NOTES

- THE CONTRACTOR IS TO PROVIDE TEMPORARY LIGHTING AT A RATE OF ONE (1) FIXTURE PER 14 SQ.M. AND TEMPORARY EXIT LIGHTING IN ALL CONSTRUCTION AREAS. CONNECT THESE LIGHTS TO THE TEMPORARY ELECTRICAL PANEL FOR NORMAL POWER AND CONNECT THE EXIT LIGHTS TO AN AVAILABLE ESSENTIAL POWER SOURCE. REMOVE TEMPORARY SERVICES WHEN THEY ARE REDUNDANT (I.E. AFTER THE PERMANENT SYSTEMS ARE COMMISSIONED).

Public Works and Government Services Canada
Architectural and Engineering Services Ontario Region
Travaux publics et Services gouvernementaux Canada
Services d'architecture et de génie Région de l'Ontario

consultant

1345 ROSEMOUNT AVENUE
CORNWALL, ONTARIO
CANADA K6J 3E5
PHONE: 613-933-5602 FAX: 613-936-0335
WWW.WSPGROUP.COM



| revision | description | date |
|----------|-------------------|------------|
| 2 | ISSUED FOR TENDER | 2015/05/29 |
| 1 | ISSUED FOR REVIEW | 2015/04/17 |

Do not scale drawings. Verify all dimensions and conditions on site and immediately notify the engineer of all discrepancies.

| | |
|--|--|
| | A Detail No. / No. du détail |
| | B drawing no. - where detail required / dessin no. - où détail exigé |
| | C drawing no. - where detailed / dessin no. - où détaillé |

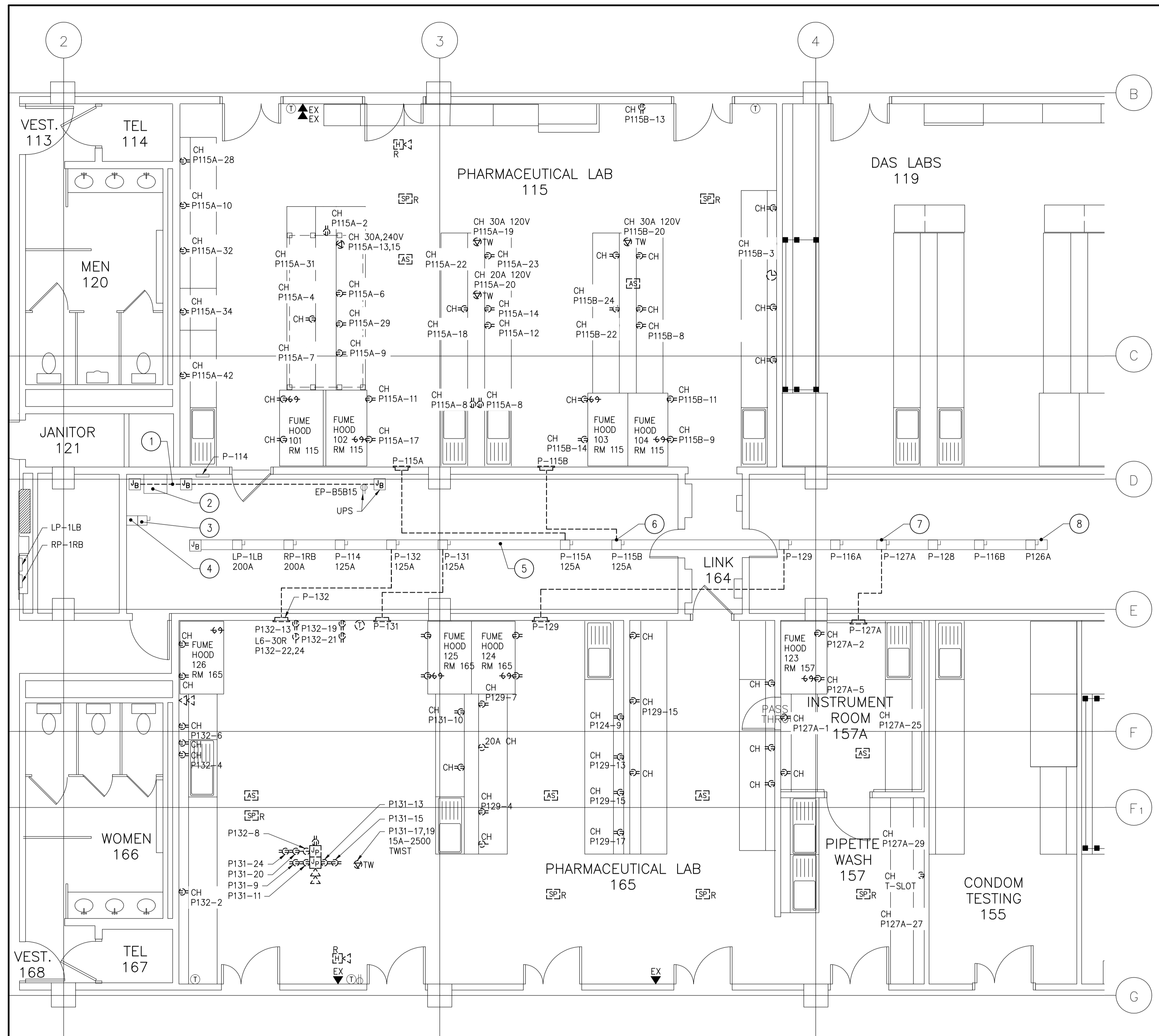
project title / titre du projet
TORONTO Ontario
HEALTH CANADA
2301 MIDLAND AVE
LABORATORY UPGRADES

drawing title / titre du dessin
PARTIAL LEVEL 1 LIGHTING DEMOLITION

| | |
|---|--------------|
| drawn by / dessiné par | TS |
| designed by / conçu par | NM |
| approved by / approuvé par | HR |
| tender submission / soumission | AQUIL ALI |
| project manager / administrateur de projets | |
| project date / date du projet | 2015/04/15 |
| project no. / no. du projet | R.054345.001 |
| drawing no. / no. du dessin | E1.1 |

CONTRACT DRAWINGS

CONTRACT DRAWINGS FOR ELECTRICAL WORK ARE IN PART DIAGRAMMATIC, INTENDED TO CONVEY THE SCOPE OF WORK AND CONTRACTOR TO COORDINATE LAYOUT OF ELECTRICAL SYSTEMS WITH ARCHITECTURAL, STRUCTURAL, AND MECHANICAL BUILDING COMPONENTS, AS WELL AS OTHER ELECTRICAL SYSTEMS. PROVIDE ADDITIONAL JUNCTION BOXES, FITTINGS, SUPPORTS, ETC. REQUIRED TO FACILITATE THE WORK. NO EXTRA PAYMENTS ARISING FROM FAILURE TO MAKE THIS COORDINATION WILL BE CONSIDERED.



PARTIAL LEVEL 1 POWER & SYSTEMS DEMOLITION LAYOUT
SCALE: 1:50

DEMOLITION LEGEND

- ⊖ REMOVE 120V-15A DUPLEX RECEPTACLE, ALL ASSOCIATED CONDUIT AND WIRING BACK TO SOURCE
- ⊖ REMOVE 5-20RA SIMPLEX RECEPTACLE, ALL ASSOCIATED CONDUIT AND WIRING BACK TO SOURCE
- ⊖ REMOVE 120/240 CONVENIENCE/SPECIAL NEMA CONFIGURATION RECEPTACLE, BACKBOX, CONDUIT AND ALL ASSOCIATED WIRING BACK TO SOURCE
- ▽ REMOVE NETWORK OUTLET. REFER TO NOTE 1.
- ⊖ REMOVE CLOCK, ALL ASSOCIATED CONDUIT AND WIRING BACK TO SOURCE
- ⊖ REMOVE JIFFY POLE BY ELECTRICAL CONTRACTOR AND ALL TYPICAL ASSOCIATED CONDUIT AND WIRING BACK TO SOURCE
- ⊖ RELOCATE SPEAKER AND EXTEND ALL ASSOCIATED CONDUIT AND WIRING AS REQUIRED AS CLOSE AS POSSIBLE TO PREVIOUS LOCATION IN NEW CEILING.
- ⊖ REMOVE 135°F HEAT DETECTOR FIXED TEMPERATURE & 15°F RATE OF RISE, ALL ASSOCIATED CONDUIT AND WIRING BACK TO SOURCE. PREVIOUS DEVICE IN LOOP ON FIRE ALARM PANEL. EXTEND CONDUIT & WIRING TO MAKE CIRCUIT GOOD.
- ⊖ REMOVE TOGGLE SWITCH AND ALL ASSOCIATED CONDUIT AND WIRING BACK TO SOURCE
- ⊖ REMOVE RECESSED PANEL
- ⊖ RELOCATE CEILING MOUNTED FIRE ALARM HORN TO NEW T-BAR CEILING IN AS CLOSE TO PREVIOUS LOCATION AS POSSIBLE
- ⊖ REMOVE MOTION SENSOR, ALL ASSOCIATED CONDUIT AND WIRING BACK TO SOURCE. MAKE CIRCUIT GOOD.
- ⊖ REMOVE LINE VOLTAGE T-STAT, CONDUIT & WIRING TO SOURCE.
- EXISTING SURFACE MOUNT PANEL TO REMAIN.
- ⊖ EXISTING DISCONNECT SWITCH TO REMAIN.
- ⊖ EXISTING DUPLEX RECEPTACLE TO REMAIN.
- ⊖ EXISTING LINE VOLTAGE THERMOSTAT TO REMAIN.
- EX ▶ EXISTING TELEPHONE OUTLET TO REMAIN
- ⊖ EXISTING JUNCTION BOX TO REMAIN.
- TW TWIST LOCK
- CH COUNTER HEIGHT

LINETYPE LEGEND

- EXISTING TO REMAIN
- - - - - REMOVE

GENERAL NOTES

1. DATA & PHONE WIRING IS TO BE TEMPORARILY PULLED UP & SAFELY COILED IN THE CEILING SPACE TO THEN BE REUSED IN NEW LOCATIONS IDENTIFIED (RE-INSTALLATION, RE-CONNECTION, VERIFICATION & TESTING, ETC IS N.I.C. AND IS BY OTHERS). LABEL ALL CABLES.

CONTRACT DRAWINGS

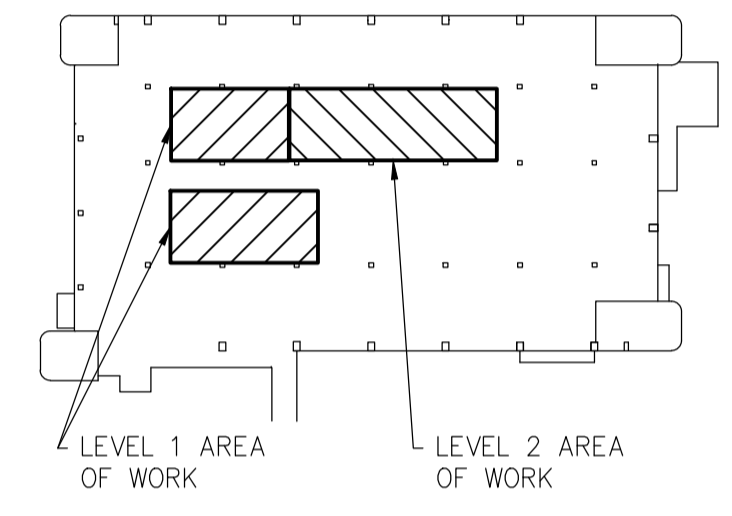
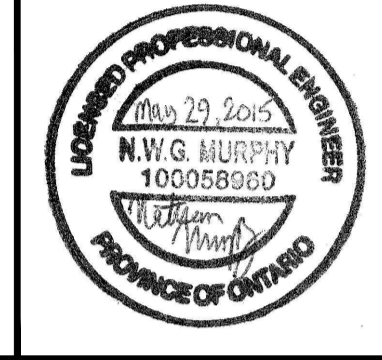
CONTRACT DRAWINGS FOR ELECTRICAL WORK ARE IN PART DIAGRAMMATIC, INTENDED TO CONVEY THE SCOPE OF WORK AND CONTRACTOR TO COORDINATE LAYOUT OF ELECTRICAL SYSTEMS WITH ARCHITECTURAL, STRUCTURAL, AND MECHANICAL BUILDING COMPONENTS, AS WELL AS OTHER ELECTRICAL SYSTEMS. PROVIDE ADDITIONAL JUNCTION BOXES, FITTINGS, SUPPORTS, ETC. REQUIRED TO FACILITATE THE WORK. NO EXTRA PAYMENTS ARISING FROM FAILURE TO MAKE THIS COORDINATION WILL BE CONSIDERED.

- LEVEL 1 POWER & SYSTEMS DEMO. DRAWING NOTES:**
- ① REMOVE & RELOCATE 21mm EMT FOR "JIFFY POLE RM 106 SECURITY COMPUTER" DOWN TO AVOID NEW MECH. DUCT WORK. COORDINATE WITH MECH. DUCT WORK. EXTEND CONDUIT AND WIRING AS REQUIRED.
 - ② EXISTING 112.5KVA TRANSFORMER 1T2, 600/120/208V-3ø, %Z-3.4 TO REMAIN.
 - ③ EXISTING TRANSFORMER 1T2 600VAC DISCONNECT 200A TO REMAIN.
 - ④ EXISTING 600VAC BUS DUCT TO REMAIN.
 - ⑤ EXISTING FPE 400A-347/600V-3ø-4W RATED LOW IMPEDANCE BUS DUCT SERIES 54-00677-06 TO REMAIN.
 - ⑥ REUSE BUS DUCT MOUNTED SWITCH TO PROVIDE POWER TO NEW PANEL P115. UPDATE LABEL.
 - ⑦ REUSE BUS DUCT MOUNTED SWITCH TO PROVIDE POWER TO NEW PANEL P165. (REFER TO DWG E3.1 & UPDATE LABEL.
 - ⑧ EXISTING 120/208VAC WEST BUS DUCT TO REMAIN.

consultant

WSP

1345 ROSEMOUNT AVENUE
CORNWALL, ONTARIO
CANADA K6J 3E5
PHONE: 613-933-5602 FAX: 613-936-0335
WWW.WSPGROUP.COM



| revision | description | date |
|----------|-------------------|------------|
| 2 | ISSUED FOR TENDER | 2015/05/29 |
| 1 | ISSUED FOR REVIEW | 2015/04/17 |

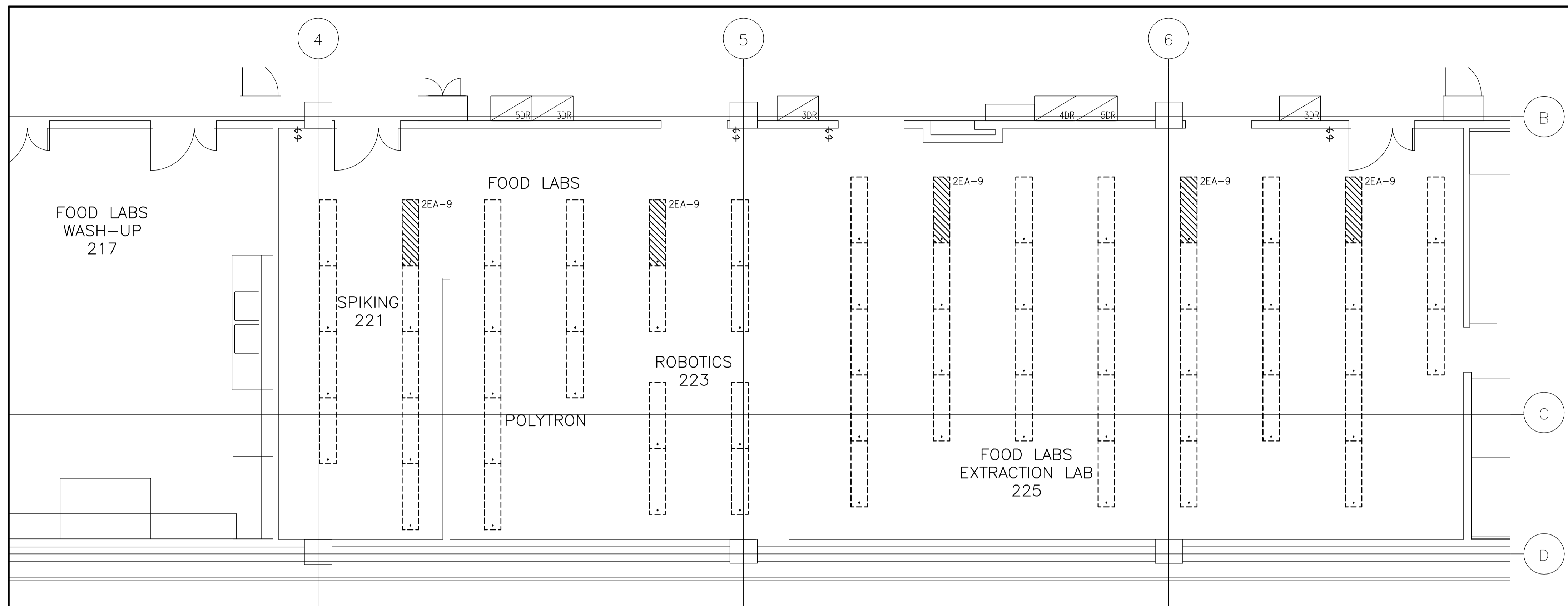
Do not scale drawings. Verify all dimensions and conditions on site and immediately notify the engineer of all discrepancies.

| A | Detail No. |
|-----|-------------------------------------|
| A | No. du détail |
| B | drawing no. - where detail required |
| B/C | dessin no. - où détail exigé |
| C | drawing no. - where detailed |
| C | dessin no. - où détaillé |

project title
titre du projet
TORONTO Ontario
HEALTH CANADA
2301 MIDLAND AVE
LABORATORY UPGRADES

drawing title
titre du dessin
**PARTIAL LEVEL 1
POWER AND SYSTEMS
DEMOLITION**

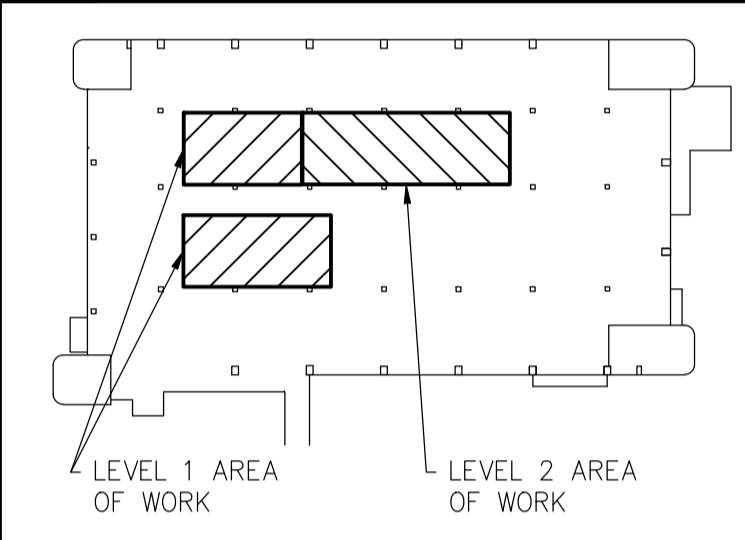
| | |
|--------------------------------|--|
| drawn by dessiné par | TS |
| designed by conçu par | NM |
| approved by approuvé par | FH |
| tender soumission | AQUIL ALI project manager administrateur de projets |
| project date date du projet | 2015/04/15 |
| project no. no. du projet | R.054345.001 |
| drawing no. no. du dessin | E1.2 |



PARTIAL LEVEL 2 – LIGHTING DEMOLITON
SCALE: 1:50

Public Works and Government Services Canada
Architectural and Engineering Services
Ontario Region
Travaux publics et Services gouvernementaux Canada
Services d'architecture et de génie
Région de l'Ontario

consultant
WSP
1345 ROSEMOUNT AVENUE
CORNWALL, ONTARIO
CANADA K6J 3E5
PHONE: 613-933-5602 FAX: 613-936-0335
WWW.WSPGROUP.COM



| revision | description | date |
|----------|-------------------|------------|
| 2 | ISSUED FOR TENDER | 2015/05/29 |
| 1 | ISSUED FOR REVIEW | 2015/04/17 |

Do not scale drawings.
Verify all dimensions and conditions on site and immediately notify the engineer of all discrepancies.

- A Detail No.
No. du détail
- B drawing no. – where detail required
dessin no. – où détail exigé
- C drawing no. – where detailed
dessin no. – où détaillé

project title
titre du projet
TORONTO Ontario
HEALTH CANADA
2301 MIDLAND AVE
LABORATORY UPGRADES

drawing title
titre du dessin
**PARTIAL LEVEL 2
LIGHTING DEMOLITON**

drawn by
dessiné par TS

designed by
conçu par NM

approved by
approuvé par FH

tender
soumission **AQUIL ALI** project manager
administrateur de projets

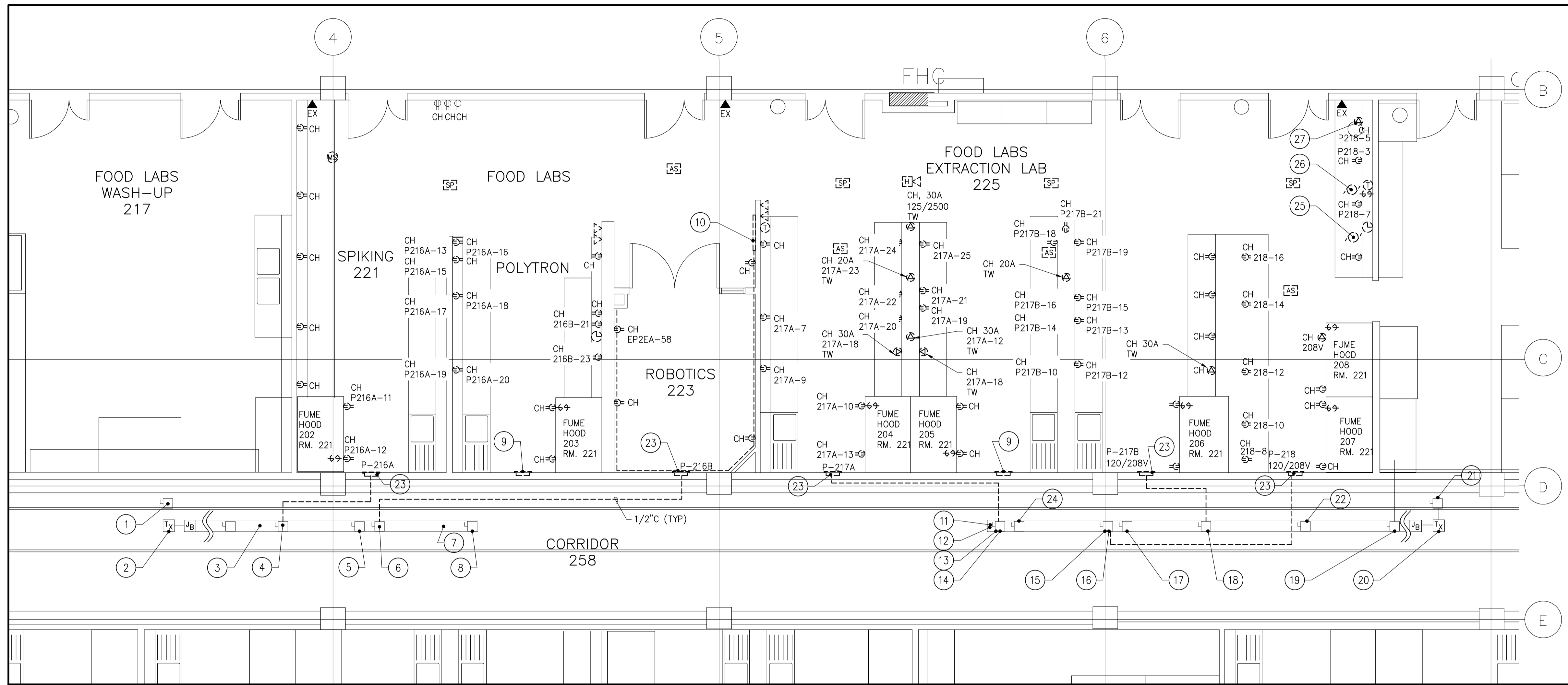
project date
date du projet **2015/04/15**

project no.
no. du projet **R.054345.001**

drawing no.
no. du dessin **E1.3**

GENERAL NOTES
1. REFER TO DRAWING E1.1 FOR DEMOLITION LIGHTING LEGEND.

CONTRACT DRAWINGS
CONTRACT DRAWINGS FOR ELECTRICAL WORK ARE IN PART DIAGRAMMATIC, INTENDED TO CONVEY THE SCOPE OF WORK AND CONTRACTOR TO COORDINATE LAYOUT OF ELECTRICAL SYSTEMS WITH ARCHITECTURAL, STRUCTURAL, AND MECHANICAL BUILDING COMPONENTS, AS WELL AS OTHER ELECTRICAL SYSTEMS. PROVIDE ADDITIONAL JUNCTION BOXES, FITTINGS, SUPPORTS, ETC. REQUIRED TO FACILITATE THE WORK. NO EXTRA PAYMENTS ARISING FROM FAILURE TO MAKE THIS COORDINATION WILL BE CONSIDERED.



PARTIAL LEVEL 2 – POWER & SYSTEMS DEMOLITION
SCALE: 1:50

LEVEL 2 POWER & SYSTEMS DEMO.
DRAWING NOTES:

- | | |
|---|---|
| 1 EXISTING FPE 200A-600V DISCONNECT 2T2 TO REMAIN. | 16 EXISTING FPE 125A DISCONNECT P-218 120/208V TO REMAIN. |
| 2 EXISTING TRANSFORMER 2T2 TO REMAIN. 112.5KVA, 600/120/208V-3Ø, 3.2%Z FEEDS BUS DUCT. | 17 EXISTING FPE 125A DISCONNECT P-222A 120/208V TO REMAIN. |
| 3 EXISTING FPE 400A-347/600V-3Ø-4W RATED LOW IMPEDANCE BUS DUCT. SERIES 54-00677-06 TO REMAIN. | 18 EXISTING FPE 125A DISCONNECT P-217B 120/208V TO REMAIN. |
| 4 EXISTING FPE 125A DISCONNECT P-216A, 120/208V TO REMAIN. | 19 EXISTING FPE 125A DISCONNECT P-219A 120/208V TO REMAIN. |
| 5 EXISTING FPE 125A DISCONNECT P-225, 120/208V TO REMAIN. | 20 EXISTING TRANSFORMER 2T1 TO REMAIN. 112.5KVA 600/120/208V-3Ø 3.2%Z FEEDS BUS DUCT |
| 6 EXISTING FPE 125A DISCONNECT P-216B, 120/208V TO REMAIN. | 21 EXISTING FPE 200A-600V DISCONNECT 2T1 TO REMAIN. |
| 7 EXISTING 120/208VAC WEST BUS DUCT TO REMAIN. | 22 EXISTING FPE 125A DISCONNECT P-221B 120/208V TO REMAIN. |
| 8 EXISTING FPE 125A DISCONNECT P-223A, 120/208V TO REMAIN. | 23 REMOVE FPE NBLP-42-4AB, 42CCT 225A-120/208V-3Ø-4W RATED 125A-3P MAIN BREAKER (TYP.) ALL LAB PANELS |
| 9 REMOVE EMPTY PANEL TUB. | 24 EXISTING FPE 125A DISC. P-222B, 120/208V TO REMAIN. |
| 10 REMOVE COUNTER HEIGHT SURFACE RACEWAY, POWER BAR & ALL ASSOCIATED CONDUIT & WIRING BACK TO SOURCE. | 25 REMOVE EX. CONES 30-270-22 |
| 11 EXISTING 120/208VAC EAST BUS DUCT TO REMAIN. | 26 REMOVE EX. CONES 30-270-2AA |
| 12 EXISTING FPE 400A-347/600V-3Ø-4W RATED LOW IMPEDANCE BUS DUCT. SERIES 54-00677-06 TO REMAIN. | 27 REMOVE HUBBELL 20A-125/250V TW |
| 13 EXISTING FPE 125A DISCONNECT P-217A 120/208V TO REMAIN. | |
| 14 REUSE BUS DUCT MOUNTED SWITCH TO PROVIDE POWER TO NEW PANEL P225A. (REFER TO DWG E3.2 & UPDATE LABEL). | |
| 15 REUSE BUS DUCT MOUNTED SWITCH TO PROVIDE POWER TO NEW PANEL P225B. (REFER TO DWG E3.2 & UPDATE LABEL). | |

GENERAL NOTES

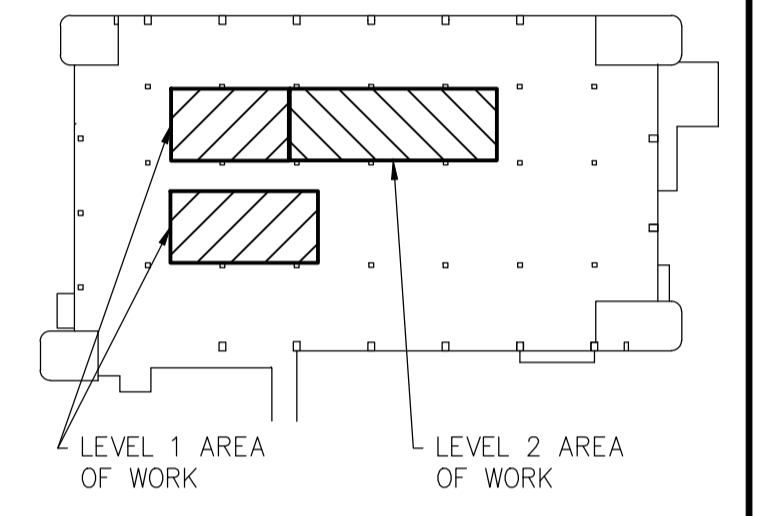
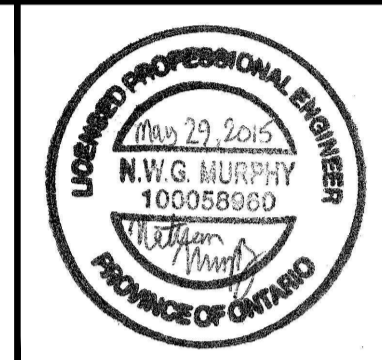
- REFER TO DRAWING E1.2 FOR DEMOLITION POWER & SYSTEMS LEGEND.
- DATA & PHONE WIRING IS TO BE TEMPORARILY PULLED UP & SAFELY COILED IN THE CEILING SPACE TO THEN BE REUSED IN NEW LOCATIONS IDENTIFIED (RE-INSTALLATION, RE-CONNECTION, VERIFICATION & TESTING, ETC IS N.I.C. AND IS BY OTHERS).

CONTRACT DRAWINGS

CONTRACT DRAWINGS FOR ELECTRICAL WORK ARE IN PART DIAGRAMMATIC, INTENDED TO CONVEY THE SCOPE OF WORK AND CONTRACTOR TO COORDINATE LAYOUT OF ELECTRICAL SYSTEMS WITH ARCHITECTURAL, STRUCTURAL, AND MECHANICAL BUILDING COMPONENTS, AS WELL AS OTHER ELECTRICAL SYSTEMS. PROVIDE ADDITIONAL JUNCTION BOXES, FITTINGS, SUPPORTS, ETC. REQUIRED TO FACILITATE THE WORK. NO EXTRA PAYMENTS ARISING FROM FAILURE TO MAKE THIS COORDINATION WILL BE CONSIDERED.

consultant

1345 ROSEMOUNT AVENUE
CORNWALL, ONTARIO
CANADA K6J 3E5
PHONE: 613-933-5602 FAX: 613-936-0335
WWW.WSPGROUP.COM



| revision | description | date |
|----------|-------------------|------------|
| 2 | ISSUED FOR TENDER | 2015/05/29 |
| 1 | ISSUED FOR REVIEW | 2015/04/17 |

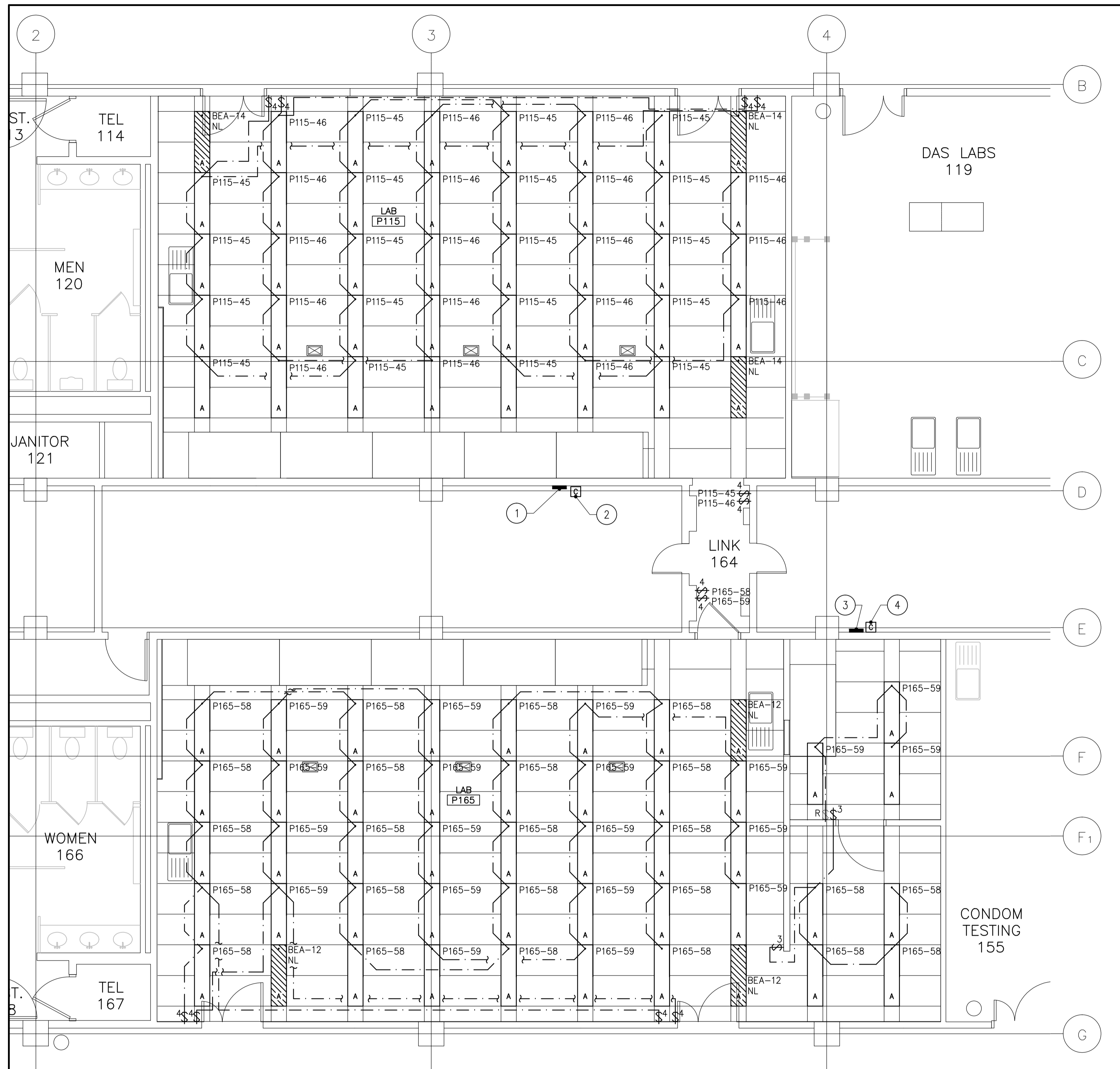
Do not scale drawings. Verify all dimensions and conditions on site and immediately notify the engineer of all discrepancies.

| | |
|---|---|
| A | Detail No. |
| B | No. du détail |
| C | drawing no. - where detail required dessin no. - où détail exigé |
| | drawing no. - where detailed dessin no. - où détaillé |

project title
titre du projet
TORONTO Ontario
HEALTH CANADA
2301 MIDLAND AVE
LABORATORY UPGRADES

drawing title
titre du dessin
**PARTIAL LEVEL 2
POWER & SYSTEMS
DEMOLITION**

| | |
|--------------------------------|--------------|
| drawn by dessiné par | TS |
| designed by conçu par | NM |
| approved by approuvé par | FH |
| tender soumission | AQUIL ALI |
| project date date du projet | 2015/04/15 |
| project no. no. du projet | R.054345.001 |
| drawing no. no. du dessin | E1.4 |



PARTIAL LEVEL 1 - LIGHTING LAYOUT
SCALE: 1:50

NEW LEGEND

- 1'x4' FLUORESCENT LIGHT FIXTURES, REFER TO SPECIFICATION FOR TYPE. PROVIDE JACK CHAINS & 'S' HOOKS.
- HATCHING INDICATES FIXTURE WIRED TO AN EMERGENCY LIGHTING CIRCUIT
- CONTACTOR, REFER TO REFERENCED LIGHTING CONTROL WIRING DIAGRAM ON DWG E2.2.
- 3-WAY TOGGLE SWITCH, GANG MOUNTED UNDER COMMON COVERPLATE WHERE MORE THAN ONE IS INDICATED.
- 4-WAY TOGGLE SWITCH, GANG MOUNTED UNDER COMMON COVERPLATE WHERE MORE THAN ONE IS INDICATED.
- NIGHT LIGHTING INDICATES FIXTURE IS WIRED TO THE UNSWITCHED SIDE OF EXISTING LIGHT CIRCUIT.
- SURFACE MOUNTED ELECTRICAL PANEL
- EXISTING TOGGLE SWITCH TO REMAIN

GENERAL NOTES

1. REMOVE FIXTURES AND REMOVE BALLAST FROM FIXTURE. HAND OVER BALLAST TO SNC- LAVALIN. REMOVE FIXTURE FROM SITE.
2. COORDINATE LOCATIONS OF MECHANICAL AND ELECTRICAL FIXTURES IN T-BAR CEILING. SUBMIT SPRINKLER HEAD LOCATIONS FOR APPROVAL (AS PER MECHANICAL) SHOWING ALL OTHER FIXTURES IN T-BAR.
3. LIGHT FIXTURE LOCATIONS MUST NOT BE ALTERED WITHOUT PRIOR APPROVAL DUE TO COORDINATION WITH ARCHITECTURAL AND MECHANICAL.

LEVEL 1 LIGHTING LAYOUT DRAWING NOTES:

- 1 PROVIDE PANEL P-115
- 2 REFER TO DETAIL 1/E2.2
- 3 PROVIDE PANEL P-165
- 4 REFER TO DETAIL 2/E2.2

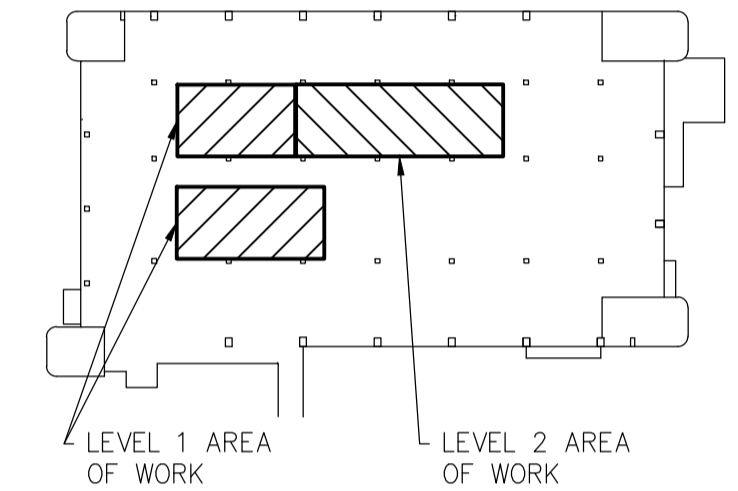
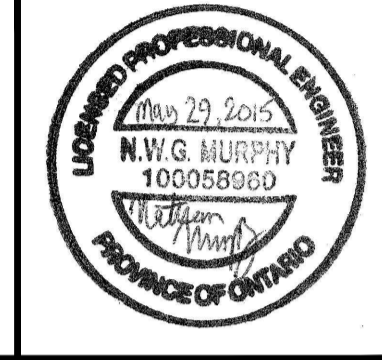
CONTRACT DRAWINGS

CONTRACT DRAWINGS FOR ELECTRICAL WORK ARE IN PART DIAGRAMMATIC, INTENDED TO CONVEY THE SCOPE OF WORK AND CONTRACTOR TO COORDINATE LAYOUT OF ELECTRICAL SYSTEMS WITH ARCHITECTURAL, STRUCTURAL AND MECHANICAL BUILDING COMPONENTS, AS WELL AS OTHER ELECTRICAL SYSTEMS. PROVIDE ADDITIONAL JUNCTION BOXES, FITTINGS, SUPPORTS, ETC. REQUIRED TO FACILITATE THE WORK. NO EXTRA PAYMENTS ARISING FROM FAILURE TO MAKE THIS COORDINATION WILL BE CONSIDERED.

consultant



1345 ROSEMOUNT AVENUE
CORNWALL, ONTARIO
CANADA K6J 3E5
PHONE: 613-933-5602 FAX: 613-936-0335
WWW.WSPGROUP.COM



| revision | description | date |
|----------|-------------------|------------|
| 2 | ISSUED FOR TENDER | 2015/05/29 |
| 1 | ISSUED FOR REVIEW | 2015/04/17 |

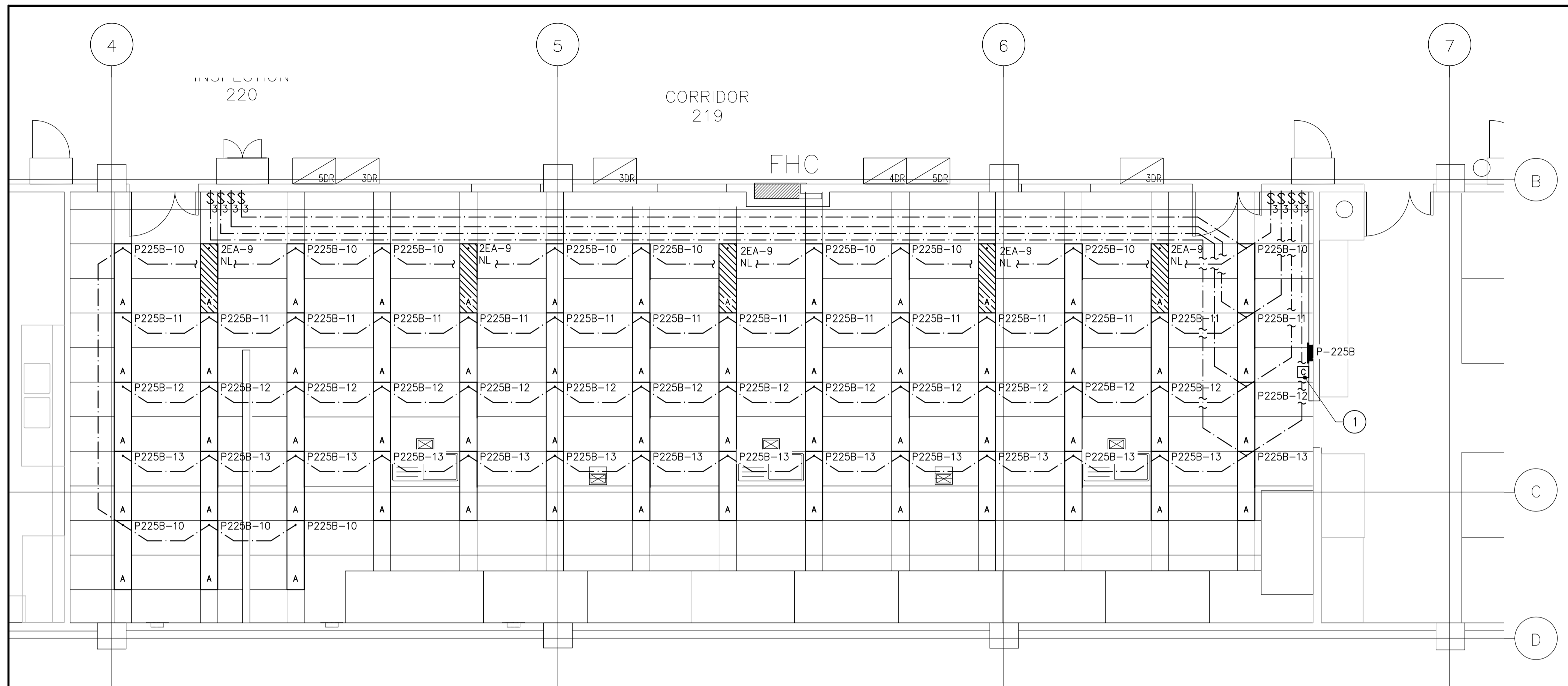
Do not scale drawings.
Verify all dimensions and conditions on site and immediately notify the engineer of all discrepancies.

| A | Detail No. No. du détail |
|---|---|
| B | drawing no. - where detail required dessin no. - où détail exigé |
| C | drawing no. - where detailed dessin no. - où détaillé |

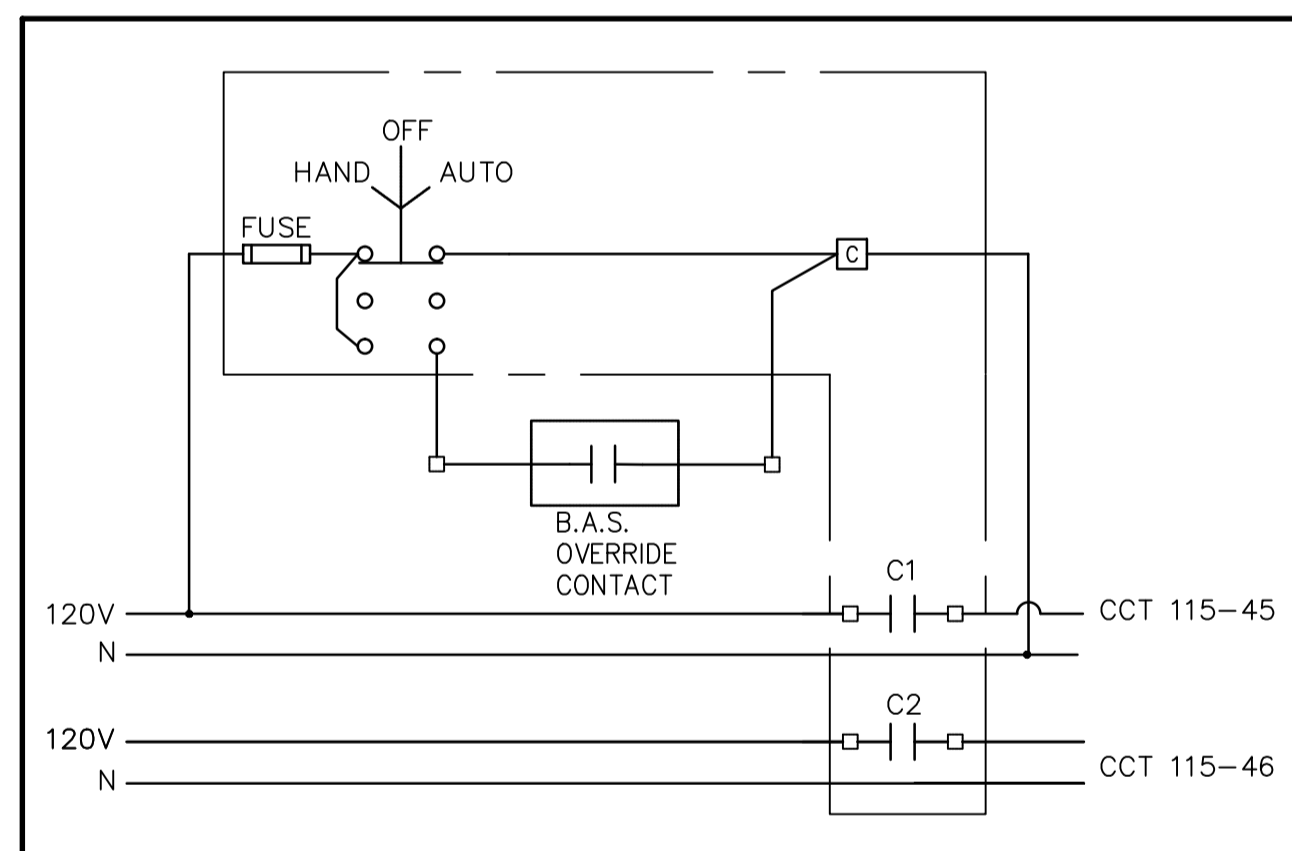
project title
titre du projet
TORONTO Ontario
HEALTH CANADA
2301 MIDLAND AVE
LABORATORY UPGRADES

drawing title
titre du dessin
**PARTIAL LEVEL 1
LIGHTING LAYOUT**

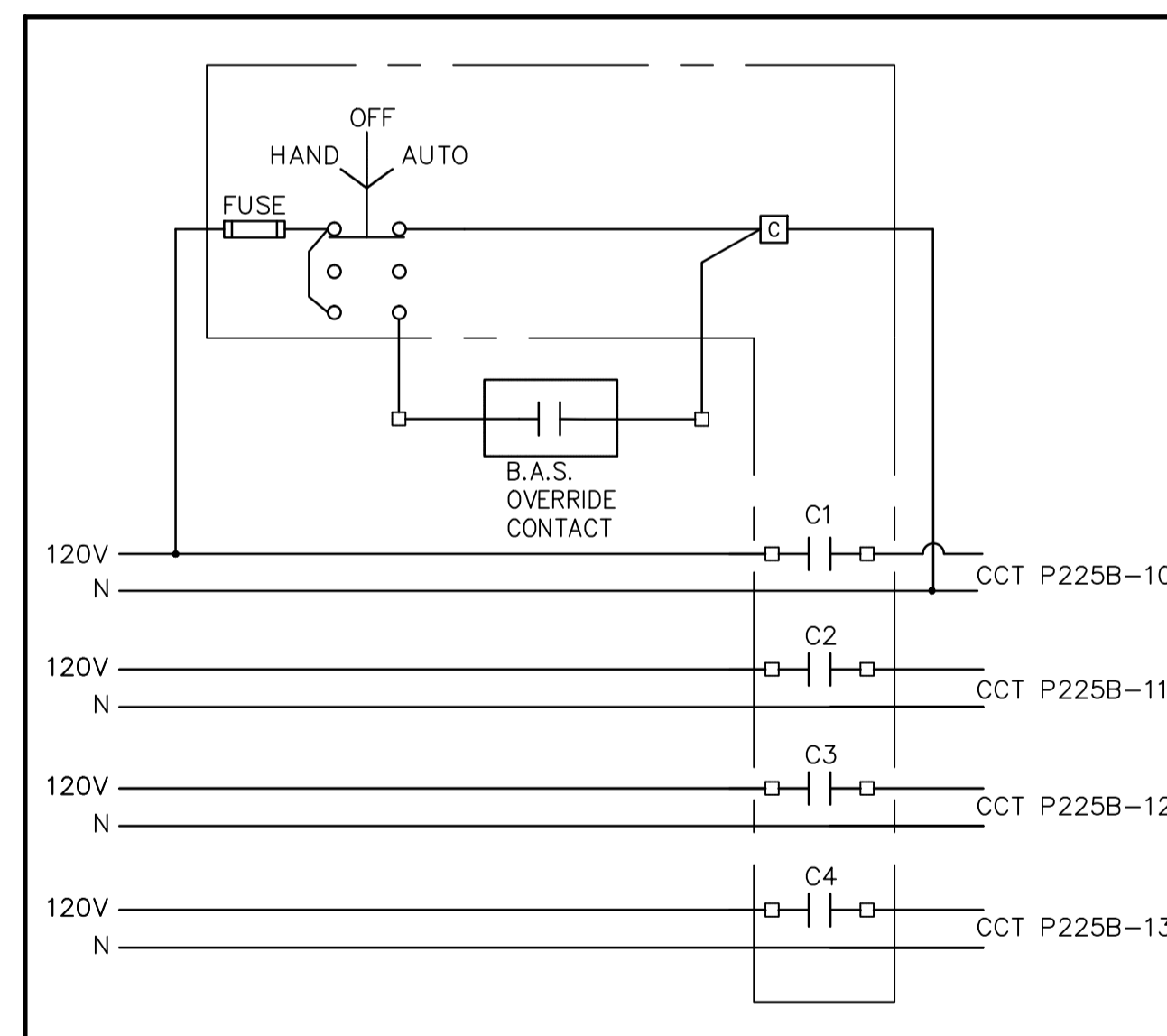
| | |
|--------------------------------|--|
| drawn by dessiné par | CT |
| designed by conçu par | NM |
| approved by approuvé par | FH |
| tender soumission | AQUIL ALI project manager administrateur de projets |
| project date date du projet | 2015/04/15 |
| project no. no. du projet | R.054345.001 |
| drawing no. no. du dessin | E2.1 |



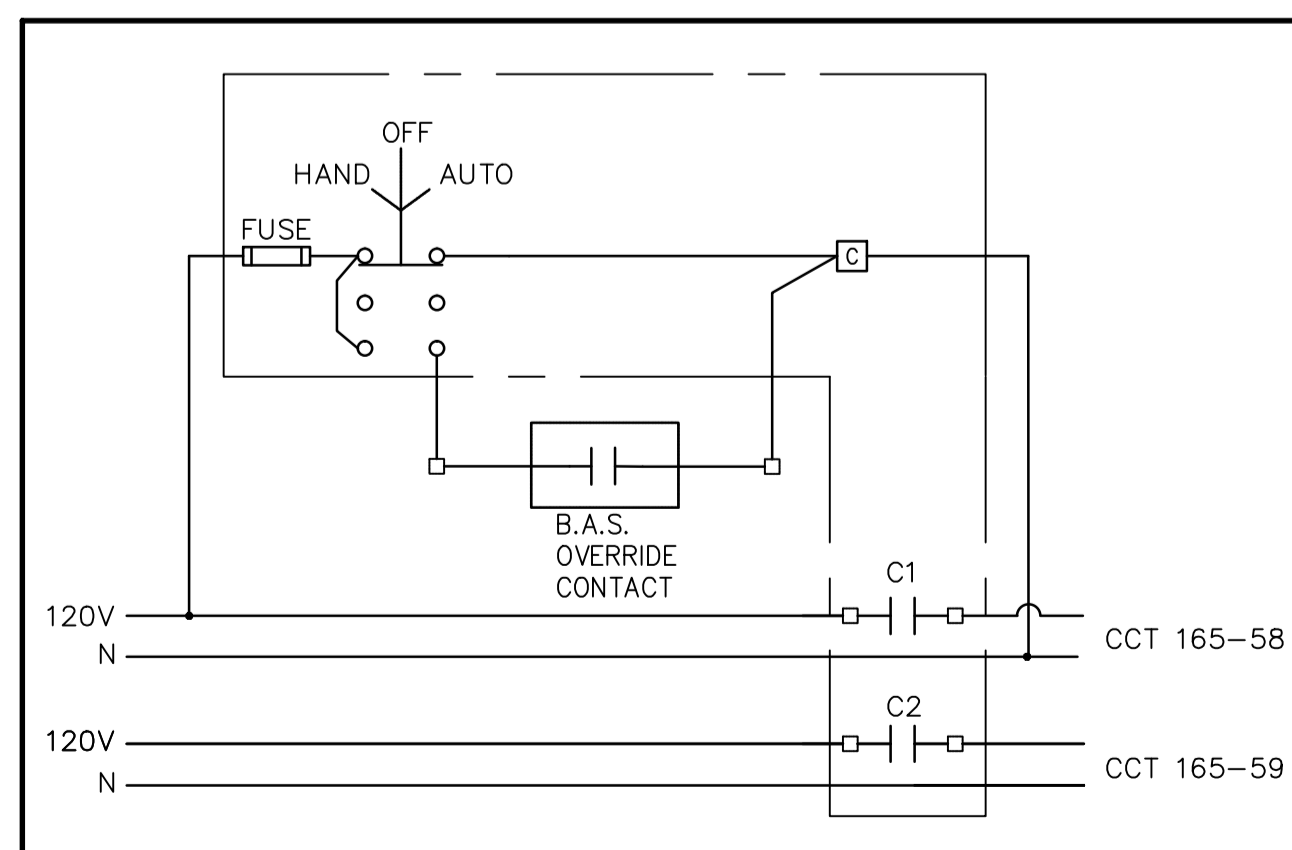
PARTIAL LEVEL 2 - LIGHTING LAYOUT
SCALE: 1:50



LIGHTING CONTROL WIRING DIAGRAM 1
SCALE: N.T.S. E2.2



LIGHTING CONTROL WIRING DIAGRAM 3
SCALE: N.T.S. E2.2



LIGHTING CONTROL WIRING DIAGRAM 2
SCALE: N.T.S. E2.2

- GENERAL NOTES**
- REFER TO DRAWING E2.1 FOR NEW LIGHTING LEGEND.
 - COORDINATE LOCATIONS OF MECHANICAL AND ELECTRICAL FIXTURES IN T-BAR CEILING. SUBMIT SPRINKLER HEAD LOCATIONS FOR APPROVAL (AS PER MECHANICAL) SHOWING ALL OTHER FIXTURES IN T-BAR.
 - LIGHT FIXTURE LOCATIONS MUST NOT BE ALTERED WITHOUT PRIOR APPROVAL DUE TO COORDINATION WITH ARCHITECTURAL AND MECHANICAL.

- LEVEL 2 LIGHTING LAYOUT DRAWING NOTES:**
- 1 REFER TO DETAIL 3/E2.2

CONTRACT DRAWINGS

CONTRACT DRAWINGS FOR ELECTRICAL WORK ARE IN PART DIAGRAMMATIC, INTENDED TO CONVEY THE SCOPE OF WORK AND CONTRACTOR TO COORDINATE LAYOUT OF ELECTRICAL SYSTEMS WITH ARCHITECTURAL, STRUCTURAL, AND MECHANICAL BUILDING COMPONENTS, AS WELL AS OTHER ELECTRICAL SYSTEMS. PROVIDE ADDITIONAL JUNCTION BOXES, FITTINGS, SUPPORTS, ETC. REQUIRED TO FACILITATE THE WORK. NO EXTRA PAYMENTS ARISING FROM FAILURE TO MAKE THIS COORDINATION WILL BE CONSIDERED.

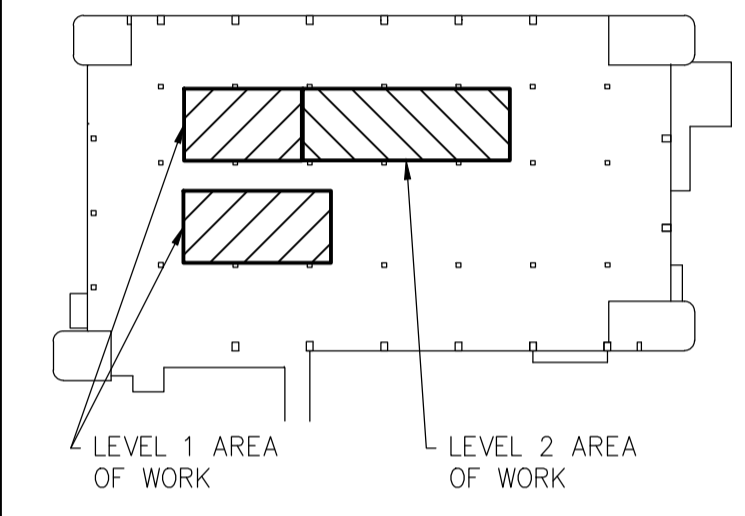
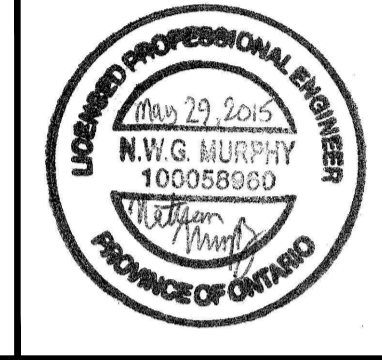
Public Works and Government Services Canada
Architectural and Engineering Services
Ontario Region

Travaux publics et Services gouvernementaux Canada
Services d'architecture et de génie
Région de l'Ontario

consultant

WSP

1345 ROSEMOUNT AVENUE
CORNWALL, ONTARIO
CANADA K6J 3E5
PHONE: 613-933-5602 FAX: 613-936-0335
WWW.WSPGROUP.COM



| revision | description | date |
|----------|-------------------|------------|
| 2 | ISSUED FOR TENDER | 2015/05/29 |
| 1 | ISSUED FOR REVIEW | 2015/04/17 |

Do not scale drawings. Verify all dimensions and conditions on site and immediately notify the engineer of all discrepancies.

- A Detail No.
No. du détail
- B drawing no. - where detail required
dessin no. - où détail exigé
- C drawing no. - where detailed
dessin no. - où détaillé

project title
titre du projet

TORONTO Ontario
HEALTH CANADA
2301 MIDLAND AVE

LABORATORY UPGRADES

drawing title
titre du dessin

PARTIAL LEVEL 2 LIGHTING LAYOUT

drawn by
dessiné par **SW**

designed by
conçu par **NM**

approved by
approuvé par **FH**

tender submission **AQUIL ALI** project manager
administrateur de projets

project date
date du projet **2015/04/15**

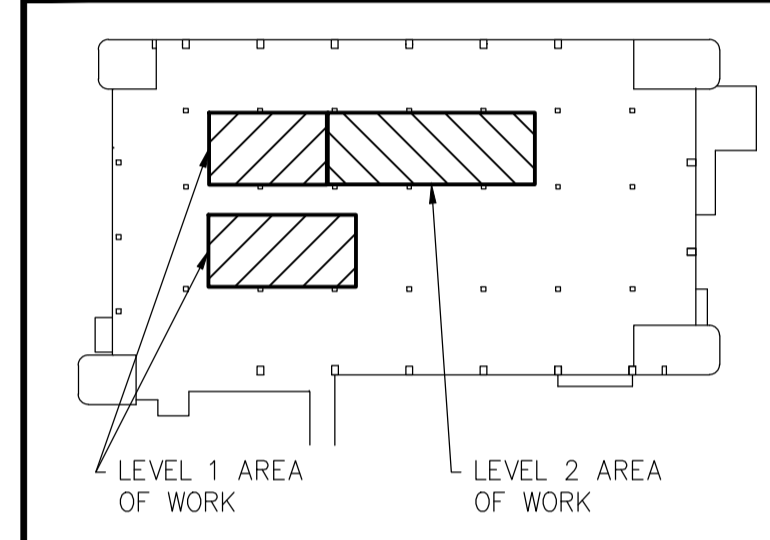
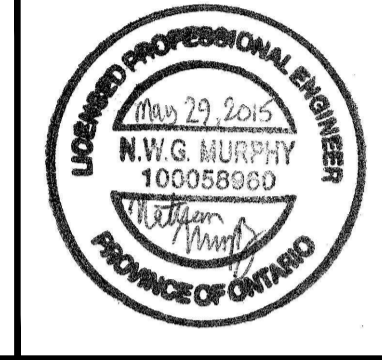
project no.
no. du projet **R.054345.001**

drawing no.
no. du dessin **E2.2**

consultant



1345 ROSEMOUNT AVENUE
 CORNWALL, ONTARIO
 CANADA K6J 3E5
 PHONE: 613-933-5602 FAX: 613-936-0335
 WWW.WSPGROUP.COM



| revision | description | date |
|----------|-------------------|------------|
| 2 | ISSUED FOR TENDER | 2015/05/29 |
| 1 | ISSUED FOR REVIEW | 2015/04/17 |

Do not scale drawings. Verify all dimensions and conditions on site and immediately notify the engineer of all discrepancies.

| A | Detail No. |
|---|---|
| B | No. du détail |
| C | drawing no. - where detail required dessin no. - où détail exigé |
| | drawing no. - where detailed dessin no. - où détaillé |

project title
titre du projet
TORONTO Ontario
 HEALTH CANADA
 2301 MIDLAND AVE
LABORATORY UPGRADES

drawing title
titre du dessin
**PARTIAL LEVEL 1
 POWER & SYSTEMS LAYOUT**

| | |
|--|--------------|
| drawn by dessiné par | CT |
| designed by conçu par | NM |
| approved by approuvé par | FH |
| tender soumission | AQUIL ALI |
| project manager administrateur de projets | |
| project date date du projet | 2015/04/15 |
| project no. no. du projet | R.054345.001 |
| drawing no. no. du dessin | E3.1 |

POWER & SYSTEMS LEGEND

- PROVIDE SURFACE MOUNT 72 CCT, 225A-120/208V-3P-4W PANELBOARD C/W 125A-3P MAIN BREAKER
- PROVIDE NEMA 5-20R (T-SLOT) G.F.C.I. DUPLEX RECEPTACLE
- PROVIDE NEMA 5-20R (T-SLOT) DUPLEX RECEPTACLE
- PROVIDE BENCH MOUNTED PEDESTAL C/W 2x NEMA 5-20R (T-SLOT) DUPLEX G.F.C.I. RECEPTACLES BACK TO BACK
- PROVIDE BENCH MOUNTED PEDESTAL C/W 2x DECORA SPACES FOR LAN OUTLETS (LAN BY OTHERS) BACK TO BACK. PROVIDE 21mmC FROM PEDESTAL ON BENCH CONCEALED UNDER BENCH TOP TO SYSTEMS CHASE/SERVICE POLE. LAN WIRING, JACKS & TERMINATIONS BY OTHERS.
- PROVIDE NEMA L6-30R RECEPTACLE FOR UPS
- FUME HOOD MOUNTED SWITCH (C/W FUME HOOD). FAN SWITCH BY MECH. CONTROLS, LIGHT WIRING BY THIS TRADE.
- MOTOR BY OTHERS. HP AS INDICATED. WIRED BY THIS TRADE.
- EM EMERGENCY STOP PUSH BUTTON
- CONTACTOR, TO DROP OUT INDICATED EQUIPMENT REFER TO SPECIFICATION.
- EXISTING DISCONNECT SWITCH TO REMAIN
- SP|R RELOCATED POSITION OF SPEAKER.
- H|R RELOCATED POSITION OF FIRE ALARM HORN.
- * FUME HOOD MOUNTED AT COUNTER HEIGHT
- CH COUNTER HEIGHT

LINE TYPE LEGEND

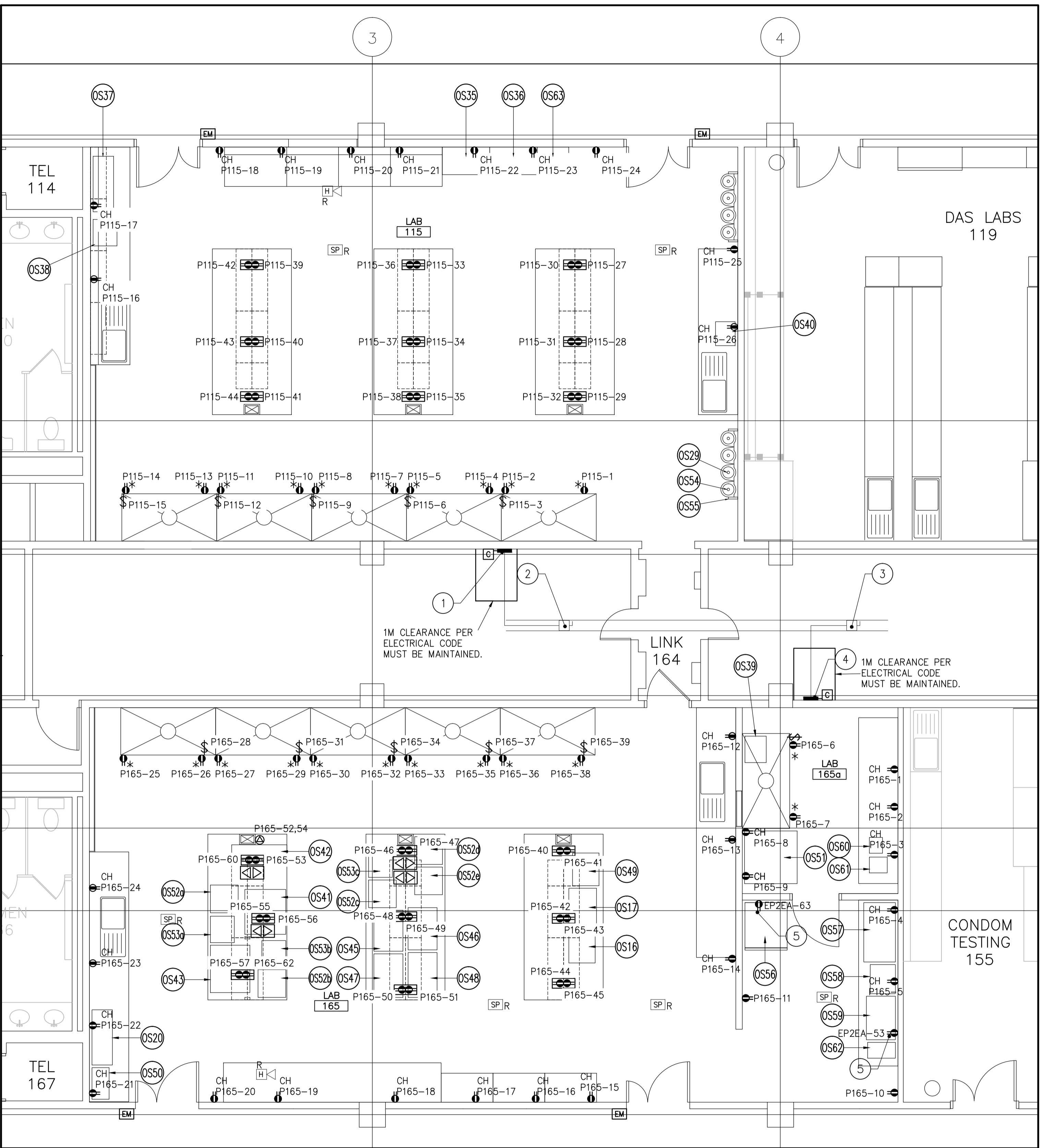
- EXISTING TO REMAIN
- PROVIDE NEW

LEVEL 1 POWER & SYSTEMS DRAWING NOTES:

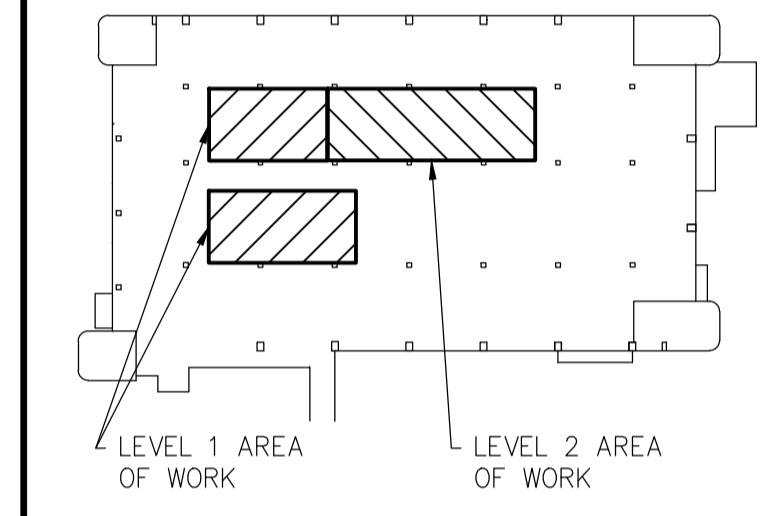
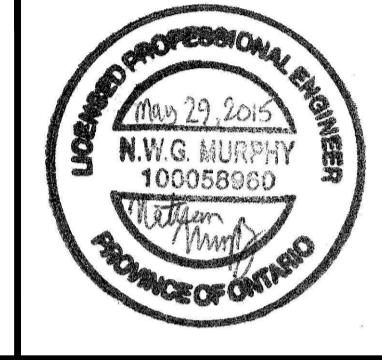
- 1 PROVIDE NEW PANEL P115
- 2 REUSE BUS DUCT MOUNTED SWITCH TO PROVIDE POWER TO NEW PANEL P115. PROVIDE KNOCKOUT FILLERS AS REQUIRED. (REFER TO DWG E1.2).
- 3 REUSE BUS DUCT MOUNTED SWITCH TO PROVIDE POWER TO NEW PANEL P165. PROVIDE KNOCKOUT FILLERS AS REQUIRED. (REFER TO DWG E1.2).
- 4 PROVIDE NEW PANEL P165
- 5 PROVIDE 20A-1P FPE BREAKERS. TAKE FROM PANELS BEING REMOVED IN THESE TWO CIRCUITS IN PANEL EP2EA IN 2ND FLOOR MECHANICAL SPACE.

OWNER SUPPLIED EQUIPMENT:

- OS1 SMALL SONICATOR #387 18x10x16 (W"xD"xH")
- OS2 LARGE SONICATOR #100 23x18x15 (W"xD"xH")
- OS3 WATERBATH #2051 194 23x16x17 (W"xD"xH")
- OS4 BENCHTOP CENTRIFUGE #447 15.5x20x18 (W"xD"xH")
- OS5 FLOOR MODEL CENTRIFUGE # 447E 23x24x34 (W"xD"xH")
- OS6 STANDARDS FRIDGE #445 55x32x80 (W"xD"xH")
- OS7 STANDARDS FREEZER #474 28x36x80 (W"xD"xH")
- OS8 SOLUTIONS FRIDGE #304 30x32x65 (W"xD"xH")
- OS9 COULOMETER WITH BALANCE OCCUPIES FULL FUMEHOOD
- OS10 KARL C/V AND OVEN ENCLOSURE 50x25x74 (W"xD"xH")
- OS11 OVEN 1 #189 24x23x39 (W"xD"xH")
- OS12 OVEN 2 #183 24x23x39 (W"xD"xH")
- OS13 VACUUM OVEN #205 18x21x26 (W"xD"xH")
- OS14 VACUUM OVEN 1 #383 25x23x22 (W"xD"xH")
- OS15 VACUUM OVEN 2 #236 18x21x26 (W"xD"xH")
- OS16 DISSOLUTION APPARATUS #38 25x20x39 (W"xD"xH")
- OS17 DISSOLUTION AUTOSAMPLER 30x21x16 (W"xD"xH")
- OS18 N/A
- OS19 TOPLOADING BALANCE ON BENCHTOP MARBLE BLOCK 36x17.5x6 (W"xD"xH")
- OS20 WRIST ACTION SHAKER #439 42x15.5x13.5 (W"xD"xH")
- OS21 HORIZONTAL/ORBITAL SHAKERS X 2 #357,374 20x18x12 (W"xD"xH")
- OS22 PURIFIED WATER (REQUIRES DEIONISED WATER PORT) #478 16x15x27 (W"xD"xH")
- OS23 PURIFIED WATER SYSTEM (REQUIRES TAP WATER PORT) #484 18x19x25 (W"xD"xH")
- OS24 SAMPLE CABINET 1 36x18x78 (W"xD"xH")
- OS25 SAMPLE CABINET 2 36x18x78 (W"xD"xH")
- OS26 STANDARDS DRAWER CABINET 36x18x56 (W"xD"xH")
- OS27 REAGENT CABINET 48x22x84 (W"xD"xH")
- OS28 SUPPLIES CABINET 48x22x84 (W"xD"xH")
- OS29 COMPRESSED GAS TANK 13x13x55 (W"xD"xH")
- OS30 LOCATION NOT YET ASSIGNED
- OS31 MICRO BALANCE ON MARBLE TABLE 35x24x30 (W"xD"xH")
- OS32 ANALYTICAL BALANCE ON MARBLE TABLE 35x24x31 (W"xD"xH")
- OS33 EVAPORATOR #457 21x14x11 (W"xD"xH")
- OS34 N/A
- OS35 SEMI-MICRO BALANCE ON MARBLE TABLE #227 36x21x46 (W"xD"xH")
- OS36 MICRO BALANCE ON MARBLE TABLE #368 36x21x46 (W"xD"xH")
- OS37 HORIZONTAL SHAKER 1 #373 20x18x12 (W"xD"xH")
- OS38 WRIST ACTION SHAKER #441 42x15.5x13.5 (W"xD"xH")
- OS39 KF VOLUMETRIC #82 16x20x19 (W"xD"xH")
- OS40 PURIFIED WATER (REQUIRES DEIONISED WATER PORT) #479 16x15x27 (W"xD"xH")
- OS41 UPLC-MS-MS #424 AND COMPONENTS 31x34x36 (W"xD"xH")
- OS42 UPS 10x82x70 (W"xD"xH")
- OS43 GC-MS 1 #215 & PUMP SYSTEM ON UPS 36x30x35 (W"xD"xH")
- OS44 GC-MS 2 #414 & PUMP SYSTEM 40x27x48 (W"xD"xH")
- OS45 HPLC 1 31x22x25 (W"xD"xH")
- OS46 HPLC 2 32x22x25 (W"xD"xH")
- OS47 HPLC 3 33x22x25 (W"xD"xH")
- OS48 HPLC 4 34x22x25 (W"xD"xH")
- OS49 DISSOLUTION APPARATUS #156 25x20x39 (W"xD"xH")
- OS50 DISINTEGRATION APPARATUS 24x13x20 (W"xD"xH")
- OS51 CONDOM TESTER 40x40x60 (W"xD"xH")
- OS52a COMPUTER 21x21x17 (W"xD"xH")
- OS52b COMPUTER 21x21x17 (W"xD"xH")
- OS52c COMPUTER 21x21x17 (W"xD"xH")
- OS52d COMPUTER 21x21x17 (W"xD"xH")
- OS52e COMPUTER 21x21x17 (W"xD"xH")
- OS52f COMPUTER 21x21x17 (W"xD"xH")
- OS53a PRINTER 20x18x18 (W"xD"xH")
- OS53b PRINTER 20x18x18 (W"xD"xH")
- OS53c PRINTER 20x18x18 (W"xD"xH")
- OS54 COMPRESSED GAS TANK 13x13x55 (W"xD"xH")
- OS55 COMPRESSED GAS TANK STAND FOR 4 TANKS 60x13x55 (W"xD"xH")
- OS56 STANDARDS FRIDGE/FREEZER 32x36x80 (W"xD"xH")
- OS57 VACUUM OVEN #384 45x24x22.5 (W"xD"xH")
- OS58 OVEN #139 22x19x29 (W"xD"xH")
- OS59 OVEN FOR DRYING GLASSWARE #140 33x22x33 (W"xD"xH")
- OS60 SONICATOR #386 12x10x16 (W"xD"xH")
- OS61 SONICATOR #134 12x13.5x16 (W"xD"xH")
- OS62 SONICATOR #135 12x21x16 (W"xD"xH")
- OS63 ANALYTICAL BALANCE ON MARBLE TABLE #226 24x18x16 (W"xD"xH")



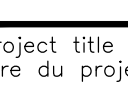


PARTIAL LEVEL 1 - POWER & SYSTEMS LAYOUT
 SCALE: 1:50



| revision | description | date |
|----------|-------------------|------------|
| 2 | ISSUED FOR TENDER | 2015/05/29 |
| 1 | ISSUED FOR REVIEW | 2015/04/17 |

Do not scale drawings.
 Verify all dimensions and conditions on site and immediately notify the engineer of all discrepancies.

| | |
|---|---------------------------------------|
|  | A Detail No. |
|  | B drawing no. - where detail required |
|  | C drawing no. - where detailed |

project title
 titre du projet

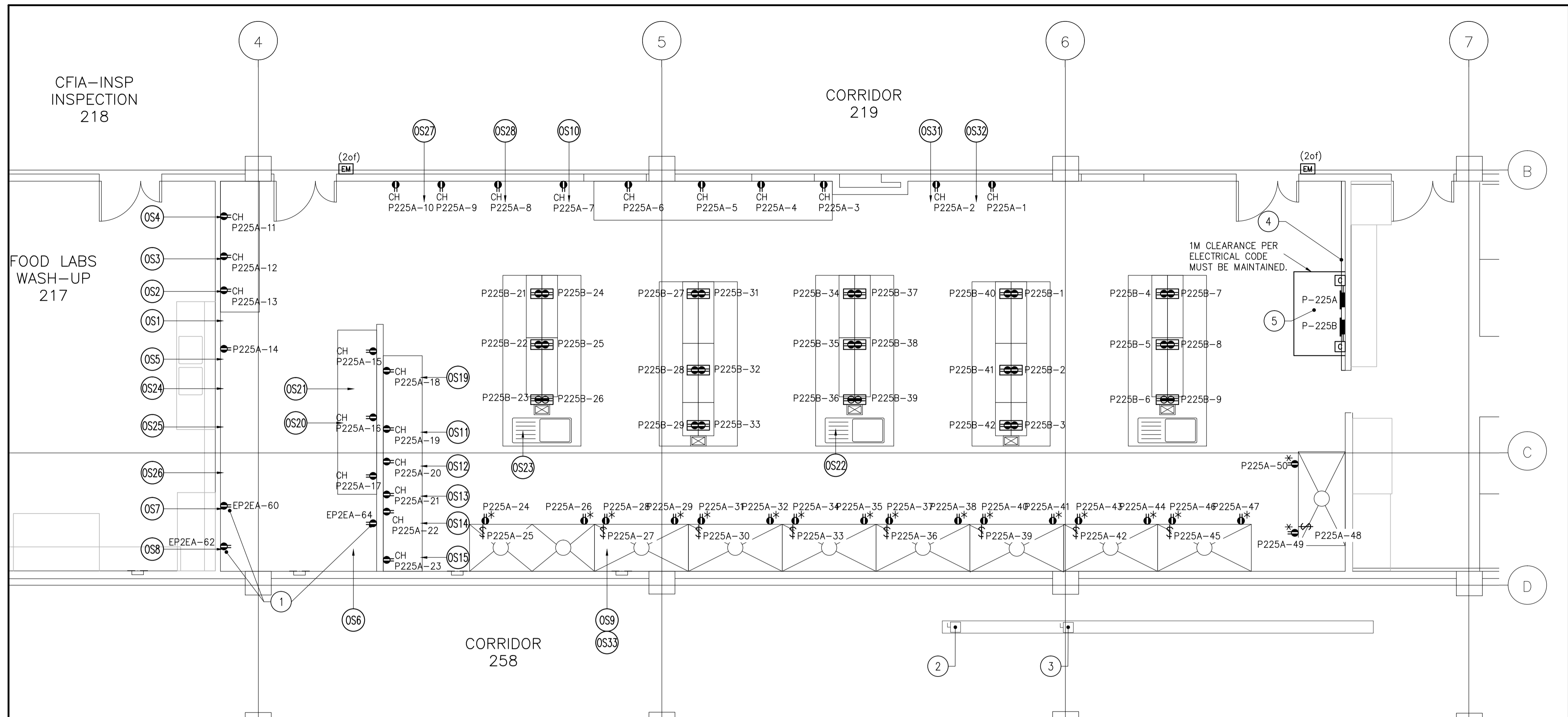
TORONTO Ontario
 HEALTH CANADA
 2301 MIDLAND AVE

LABORATORY UPGRADES

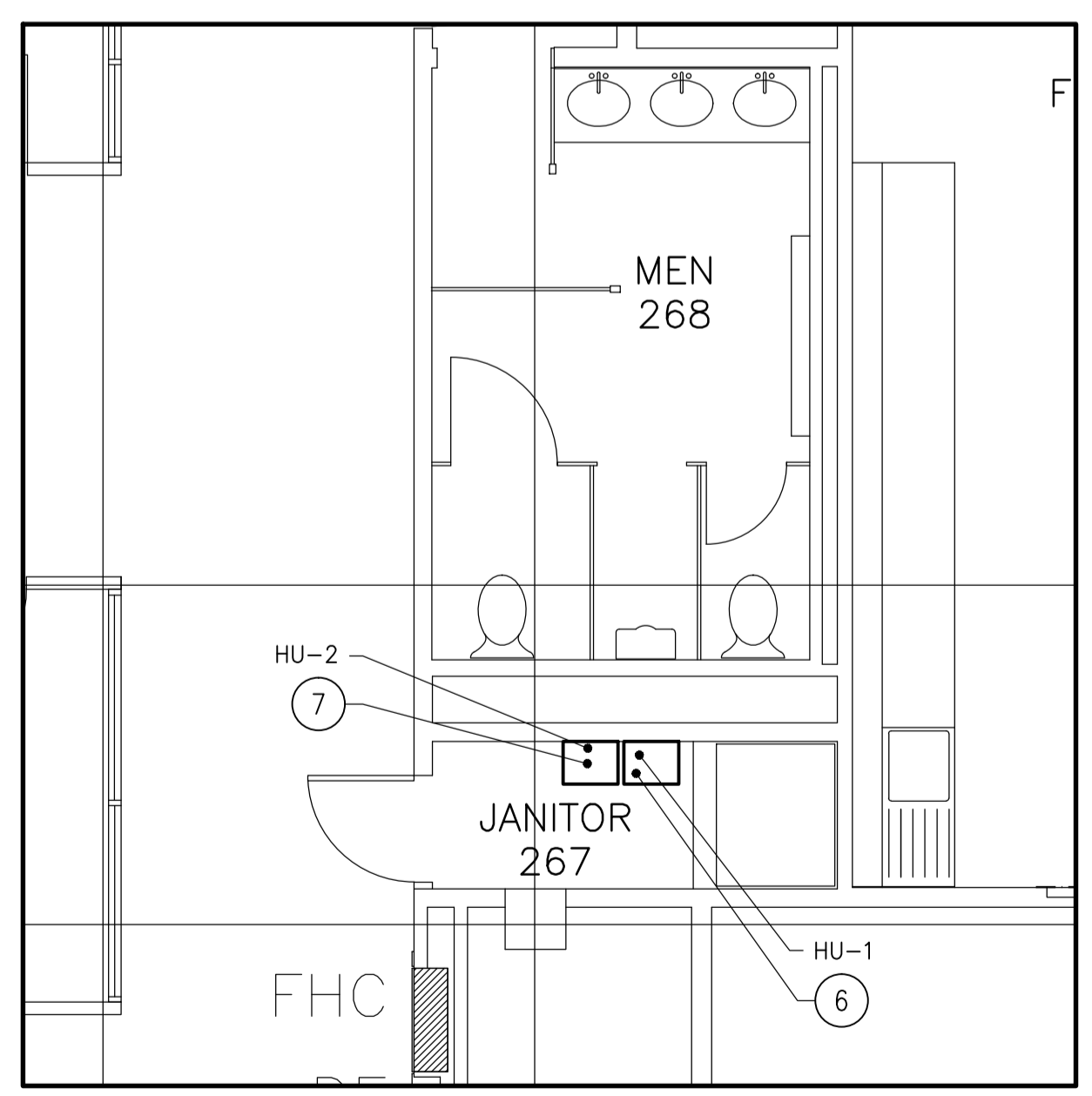
drawing title
 titre du dessin

**PARTIAL LEVEL 2
 POWER & SYSTEMS LAYOUT**

| | |
|--|--------------|
| drawn by dessiné par | CT |
| designed by conçu par | NM |
| approved by approuvé par | FH |
| tender soumission | AQUIL ALI |
| project manager administrateur de projets | |
| project date date du projet | 2015/04/15 |
| project no. no. du projet | R.054345.001 |
| drawing no. no. du dessin | E3.2 |



PARTIAL LEVEL 2 - POWER & SYSTEMS LAYOUT
 SCALE: 1:50



PARTIAL LEVEL 2 - JANITOR 267 POWER & SYSTEMS LAYOUT
 SCALE: 1:50

GENERAL NOTES

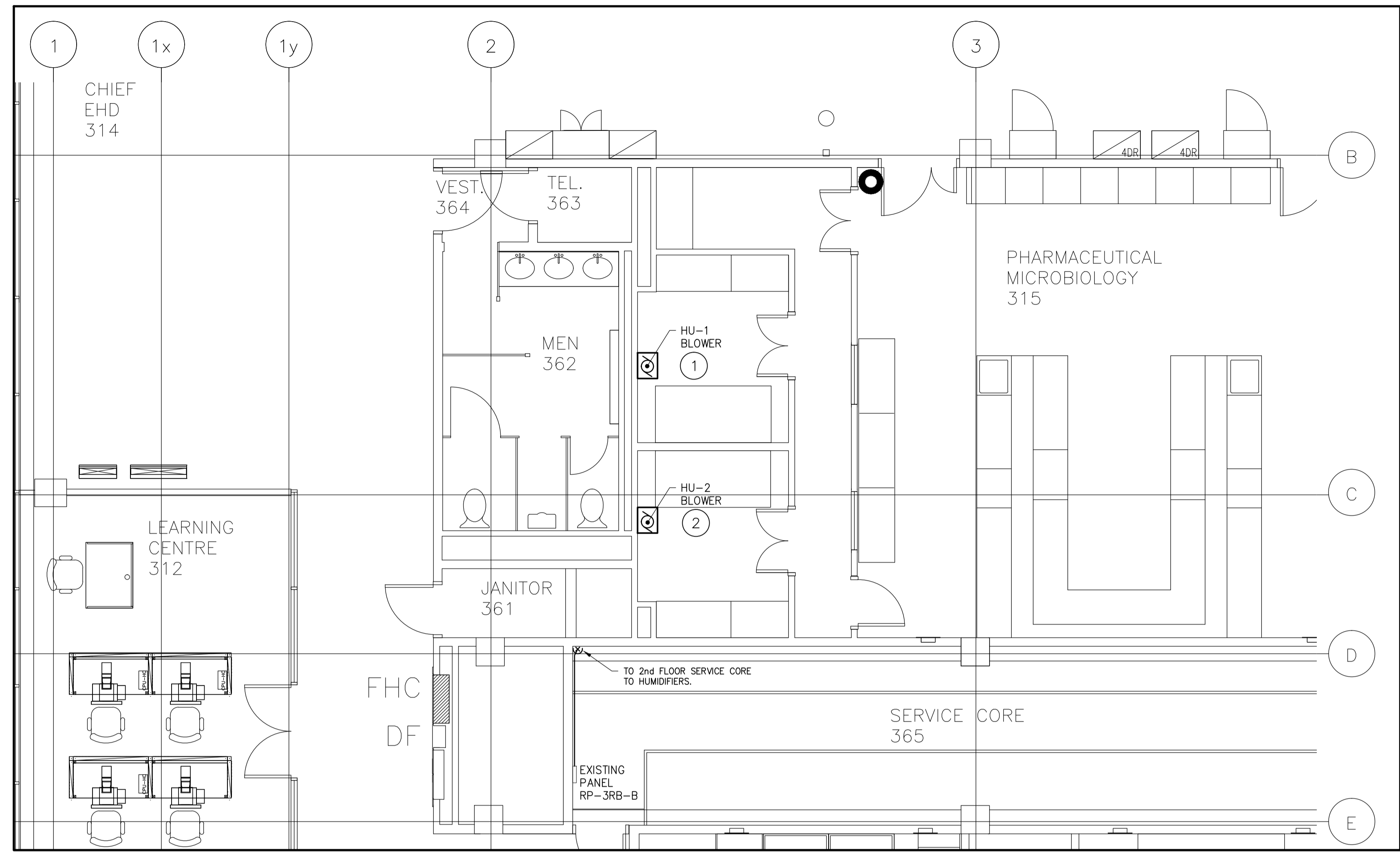
- REFER TO DRAWING E3.1 FOR LIST OF OWNER SUPPLIED EQUIPMENT.
- REFER TO DRAWING E3.1 FOR POWER & SYSTEMS LEGEND.

LEVEL 2 POWER & SYSTEMS DRAWING NOTES:

- PROVIDE 20A-1P FPE BREAKERS (TAKE FROM PANELS BEING REMOVED) IN THESE CIRCUITS IN PANEL EP2EA IN 2ND FLOOR MECHANICAL SPACE TO POWER THESE RECEPTACLES.
- REUSE BUS DUCT MOUNTED SWITCH TO PROVIDE POWER TO NEW PANEL PP225A. PROVIDE KNOCKOUT FILLERS AS REQUIRED. (REFER TO DWG E1.4).
- REUSE BUS DUCT MOUNTED SWITCH TO PROVIDE POWER TO NEW PANEL PP225B. PROVIDE KNOCKOUT FILLERS AS REQUIRED. (REFER TO DWG E1.4).
- SUGGESTED ARCHITECTURAL FURRING TO MAKE PANELS RECESSED.
- RECOMMENDED LOCATION OF NEW PANELS.
- HUMIDIFIER-1 18FLA-208V-1Ø CIRCUIT RP-3RB-B-35,37. THIRD FLOOR BLOWER FED FROM HUMIDIFIER.
- HUMIDIFIER-2 18FLA-208V-1Ø CIRCUIT RP-3RB-B-39,41. THIRD FLOOR BLOWER FED FROM HUMIDIFIER.

CONTRACT DRAWINGS

CONTRACT DRAWINGS FOR ELECTRICAL WORK ARE IN PART DIAGRAMMATIC, INTENDED TO CONVEY THE SCOPE OF WORK AND CONTRACTOR TO COORDINATE LAYOUT OF ELECTRICAL SYSTEMS WITH ARCHITECTURAL, STRUCTURAL, AND MECHANICAL BUILDING COMPONENTS, AS WELL AS OTHER ELECTRICAL SYSTEMS. PROVIDE ADDITIONAL JUNCTION BOXES, FITTINGS, SUPPORTS, ETC. REQUIRED TO FACILITATE THE WORK. NO EXTRA PAYMENTS ARISING FROM FAILURE TO MAKE THIS COORDINATION WILL BE CONSIDERED.

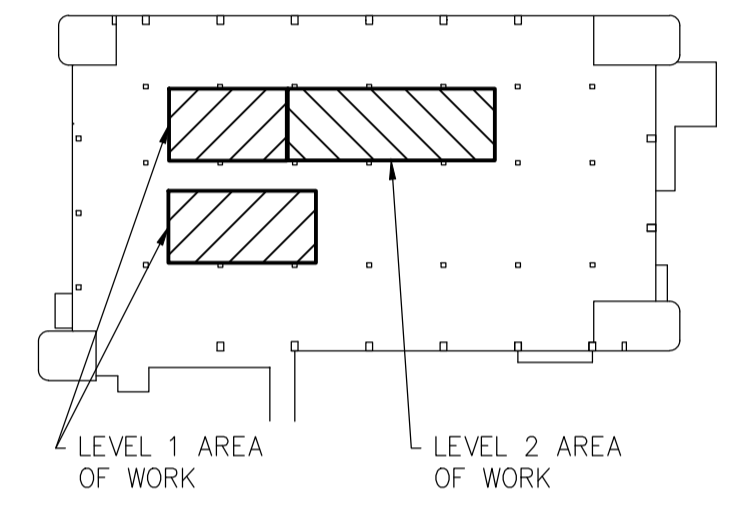
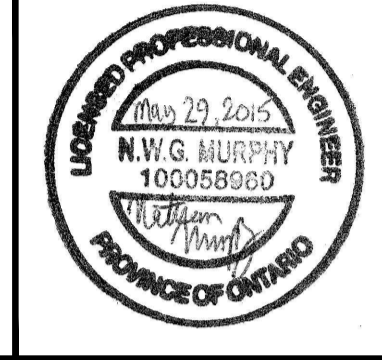


PARTIAL LEVEL 3 – POWER & SYSTEMS LAYOUT
SCALE: 1:50

Public Works and Government Services Canada
Architectural and Engineering Services
Ontario Region
Travaux publics et Services gouvernementaux Canada
Services d'architecture et de génie
Région de l'Ontario

consultant

1345 ROSEMOUNT AVENUE
CORNWALL, ONTARIO
CANADA K6J 3E5
PHONE: 613-933-5602 FAX: 613-936-0335
WWW.WSPGROUP.COM



| revision | description | date |
|----------|-------------------|------------|
| 2 | ISSUED FOR TENDER | 2015/05/29 |
| 1 | ISSUED FOR REVIEW | 2015/04/17 |

Do not scale drawings.
Verify all dimensions and conditions on site and immediately notify the engineer of all discrepancies.

- A Detail No. / No. du détail
- B drawing no. - where detail required / dessin no. - où détail exigé
- C drawing no. - where detailed / dessin no. - où détaillé

project title / titre du projet
TORONTO Ontario
HEALTH CANADA
2301 MIDLAND AVE
LABORATORY UPGRADES

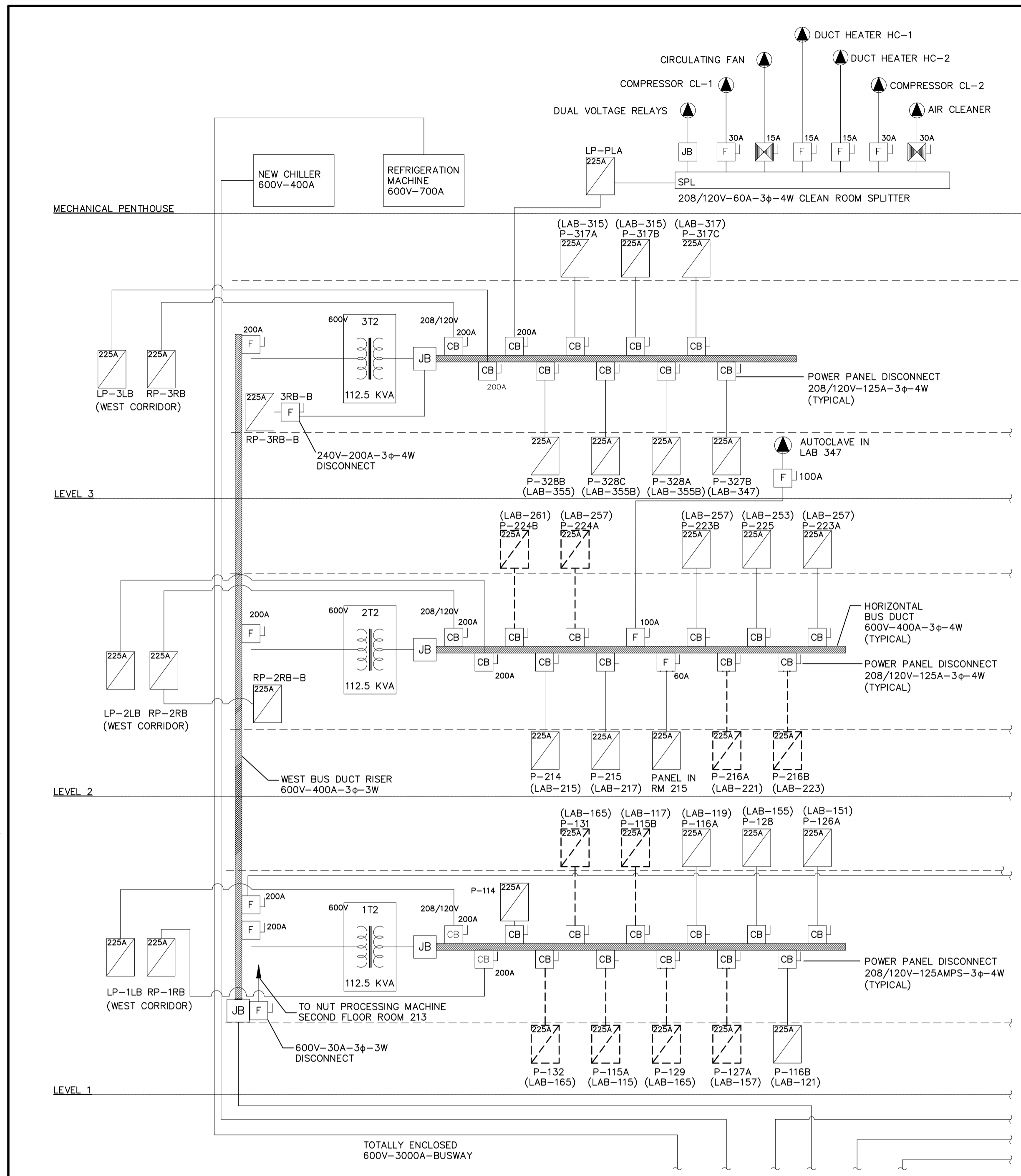
drawing title / titre du dessin
**PARTIAL LEVEL 3
POWER & SYSTEMS LAYOUT**

| | |
|-------------------------------|--|
| drawn by / dessiné par | CT |
| designed by / conçu par | NM |
| approved by / approuvé par | FH |
| tender / soumission | AQUIL ALI project manager / administrateur de projets |
| project date / date du projet | 2015/04/15 |
| project no. / no. du projet | R.054345.001 |
| drawing no. / no. du dessin | E3.3 |

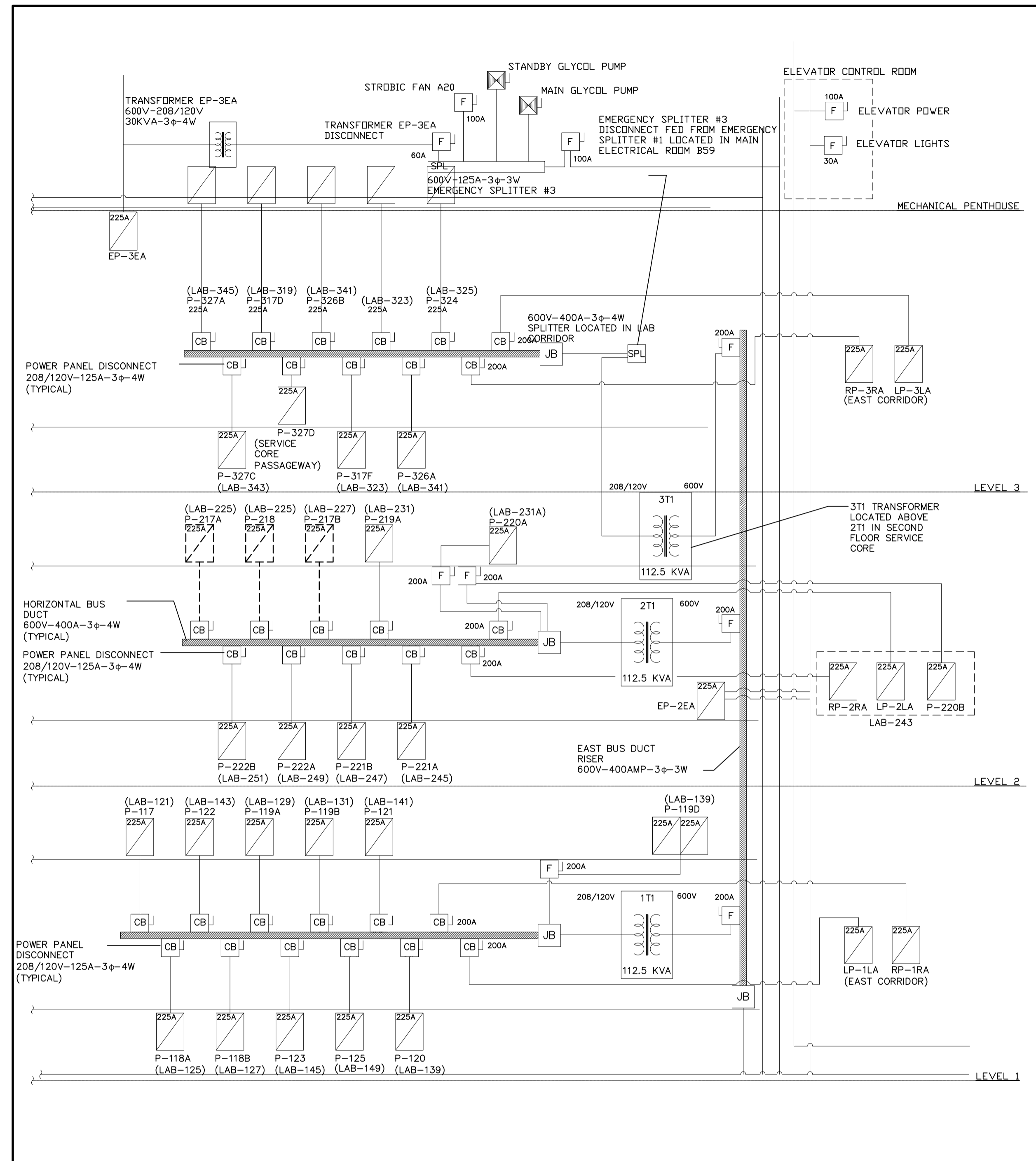
- LEVEL 3 POWER & SYSTEMS DRAWING NOTES:**
- ① WALL-MOUNTED HUMIDIFIER BLOWER AT HIGH LEVEL. FED FROM HUMIDIFIER ON LEVEL 2.
 - ② WALL-MOUNTED HUMIDIFIER BLOWER AT HIGH LEVEL. FED FROM HUMIDIFIER ON LEVEL 2.

- GENERAL NOTES:**
- 1. REFER TO DRAWING E3.1 FOR POWER & SYSTEMS LEGEND.

CONTRACT DRAWINGS
CONTRACT DRAWINGS FOR ELECTRICAL WORK ARE IN PART DIAGRAMMATIC, INTENDED TO CONVEY THE SCOPE OF WORK AND CONTRACTOR TO COORDINATE LAYOUT OF ELECTRICAL SYSTEMS WITH ARCHITECTURAL, STRUCTURAL, AND MECHANICAL BUILDING COMPONENTS, AS WELL AS OTHER ELECTRICAL SYSTEMS. PROVIDE ADDITIONAL JUNCTION BOXES, FITTINGS, SUPPORTS, ETC. REQUIRED TO FACILITATE THE WORK. NO EXTRA PAYMENTS ARISING FROM FAILURE TO MAKE THIS COORDINATION WILL BE CONSIDERED.



DEMOLITION PARTIAL SINGLE LINE DIAGRAM 1
SCALE: NTS



DEMOLITION PARTIAL SINGLE LINE DIAGRAM 2
SCALE: NTS

| LEGEND | |
|----------|---------------------------------|
| (Symbol) | CIRCUIT BREAKER |
| (Symbol) | CONTACTOR |
| (Symbol) | COMBINATION STARTER |
| (Symbol) | CURRENT TRANSFORMER |
| (Symbol) | POTENTIAL TRANSFORMER |
| (Symbol) | DISCONNECT |
| (Symbol) | FUSE DISCONNECT |
| (Symbol) | CIRCUIT BREAKER DISCONNECT |
| (Symbol) | DRAW-OUT BREAKER |
| (Symbol) | FIRE ALARM CABINET |
| (Symbol) | FUSE |
| (Symbol) | STAND-BY GENERATOR |
| (Symbol) | ISOLATION SWITCH - HIGH VOLTAGE |
| (Symbol) | GROUND STUD |
| (Symbol) | LOAD BREAK SWITCH |
| (Symbol) | POTHEAD |
| (Symbol) | JUNCTION BOX |
| (Symbol) | DIGITAL METER |
| (Symbol) | KILOWATT-HOUR METER |
| (Symbol) | MOTOR |
| (Symbol) | DIRECT CONNECTION TO EQUIPMENT |
| (Symbol) | ELECTRICAL PANEL |
| (Symbol) | SPLITTER |
| (Symbol) | 3 PHASE TRANSFORMER |
| (Symbol) | HIGH VOLTAGE TRANSFORMER |

| LINETYPE LEGEND | |
|-----------------|---------------------------------|
| (Dashed line) | TO BE REMOVED |
| (Solid line) | EXISTING BREAKER OR DESCRIPTION |

CONTRACT DRAWINGS

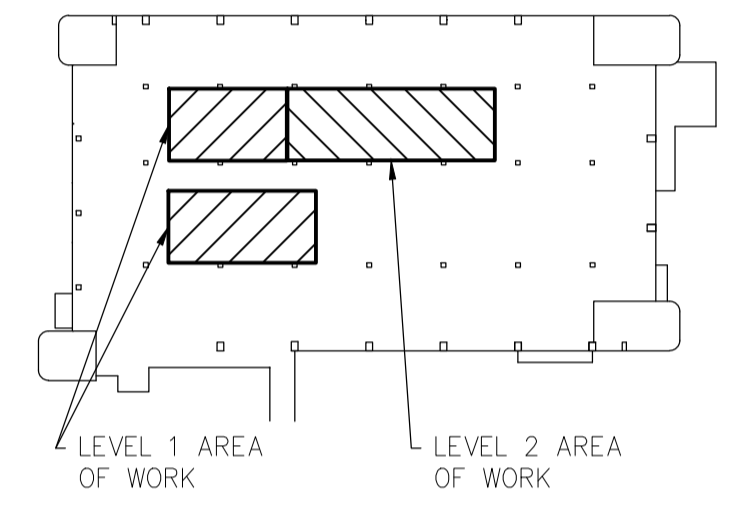
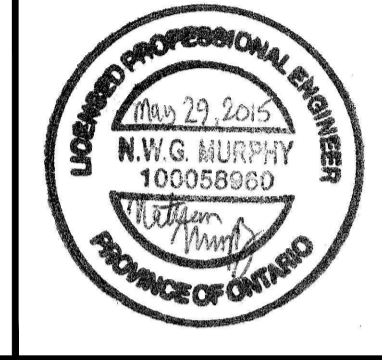
CONTRACT DRAWINGS FOR ELECTRICAL WORK ARE IN PART DIAGRAMMATIC, INTENDED TO CONVEY THE SCOPE OF WORK AND CONTRACTOR TO COORDINATE LAYOUT OF ELECTRICAL SYSTEMS WITH ARCHITECTURAL, STRUCTURAL, AND MECHANICAL BUILDING COMPONENTS, AS WELL AS OTHER ELECTRICAL SYSTEMS. PROVIDE ADDITIONAL JUNCTION BOXES, FITTINGS, SUPPORTS, ETC. REQUIRED TO FACILITATE THE WORK. NO EXTRA PAYMENTS ARISING FROM FAILURE TO MAKE THIS COORDINATION WILL BE CONSIDERED.

Public Works and Government Services Canada
Architectural and Engineering Services
Ontario Region

Travaux publics et Services gouvernementaux Canada
Services d'architecture et de génie
Région de l'Ontario

consultant

1345 ROSEMOUNT AVENUE
CORNWALL, ONTARIO
CANADA K6J 3E5
PHONE: 613-933-5602 FAX: 613-936-0335
WWW.WSPGROUP.COM



| revision | description | date |
|----------|-------------------|------------|
| 2 | ISSUED FOR TENDER | 2015/05/29 |
| 1 | ISSUED FOR REVIEW | 2015/04/17 |

Do not scale drawings. Verify all dimensions and conditions on site and immediately notify the engineer of all discrepancies.

| A | B | C |
|-------------------------------------|------------------------------|---|
| Detail No. | No. du détail | |
| drawing no. - where detail required | dessin no. - où détail exigé | |
| drawing no. - where detailed | dessin no. - où détaillé | |

project title
titre du projet
TORONTO HEALTH CANADA
2301 MIDLAND AVE
Ontario

LABORATORY UPGRADES

drawing title
titre du dessin
PARTIAL SINGLE LINE DEMOLITION DIAGRAM

drawn by
dessiné par SW

designed by
conçu par NM

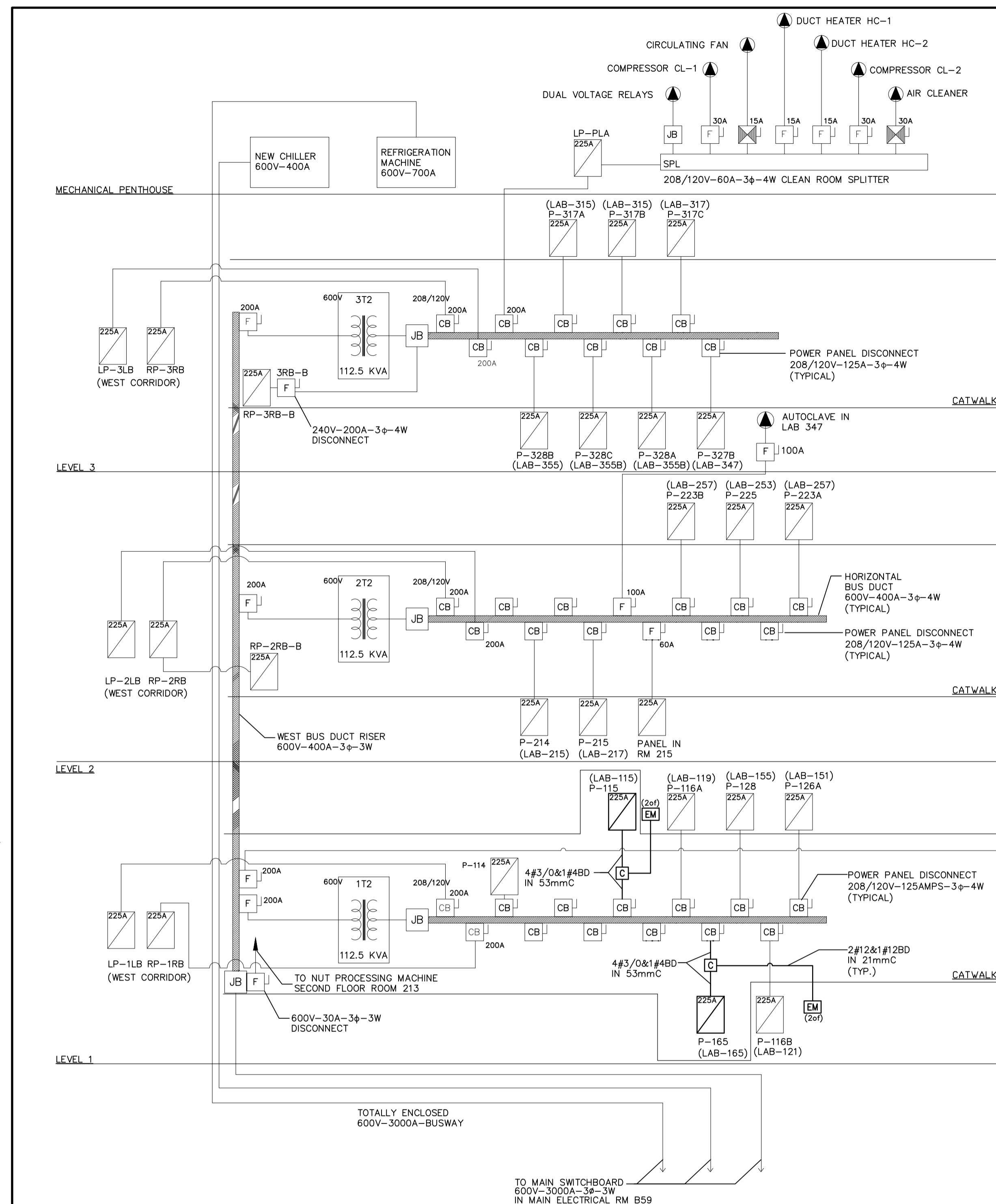
approved by
approuvé par FH

tender submission
soumission **AQUIL ALI** project manager
administrateur de projets

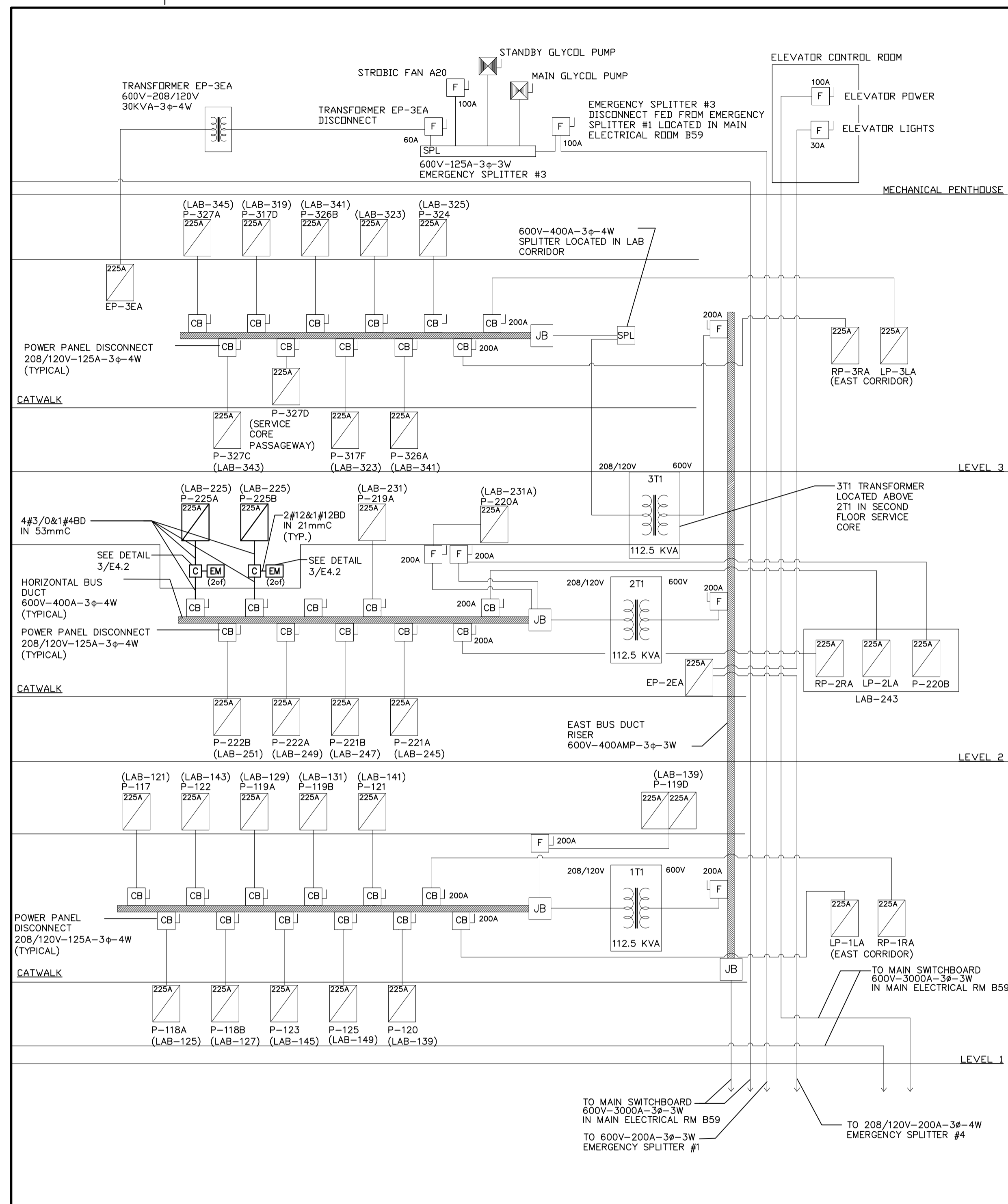
project date
date du projet **2015/04/15**

project no.
no. du projet **R.054345.001**

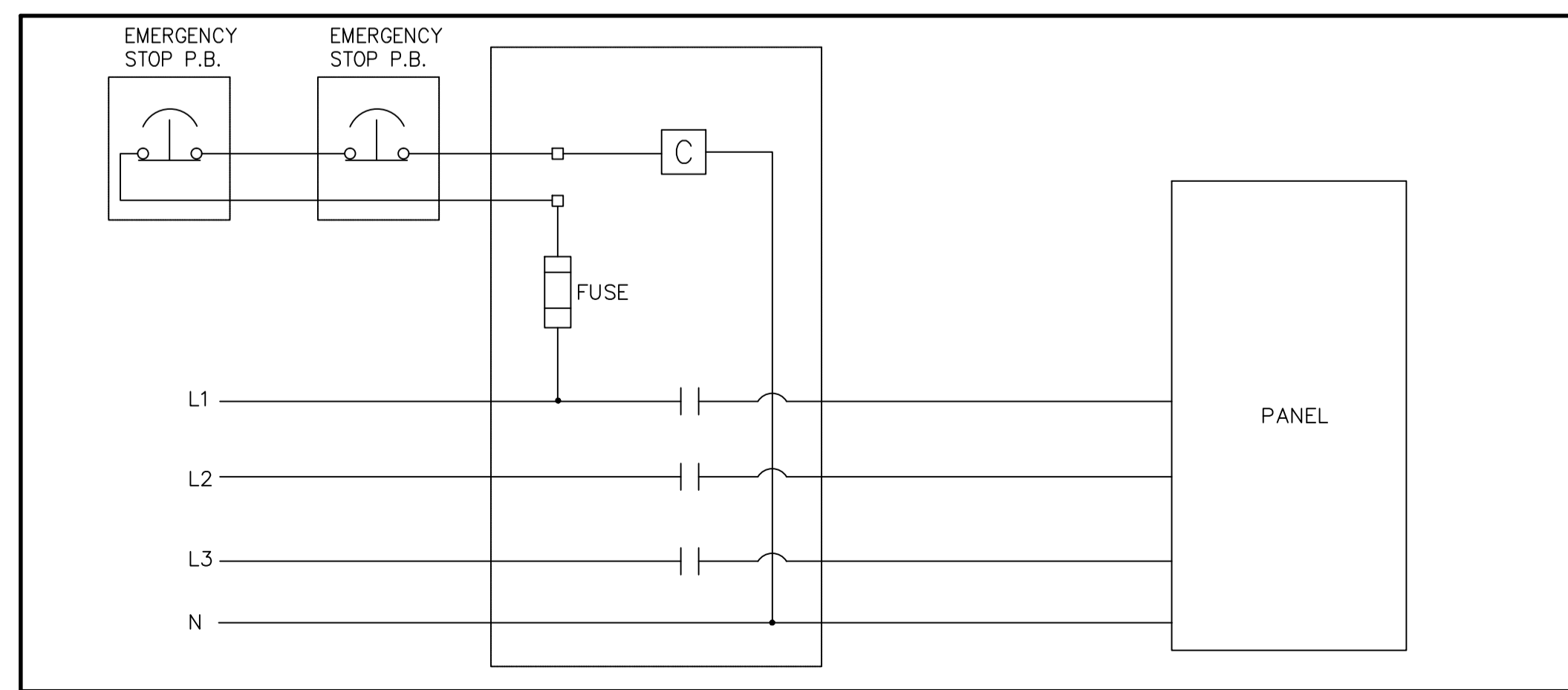
drawing no.
no. du dessin **E4.1**



REVISED PARTIAL SINGLE LINE DIAGRAM 1
SCALE: NTS E4.2



REVISED PARTIAL SINGLE LINE DIAGRAM 2
SCALE: NTS E4.2



TYPICAL EMERGENCY STOP DETAIL FOR PANELS 3
SCALE: N.T.S. E4.2

LINETYPE LEGEND

| | |
|---|---------------------------------|
| — | EXISTING BREAKER OR DESCRIPTION |
| — | NEW BREAKER OR DESCRIPTION |

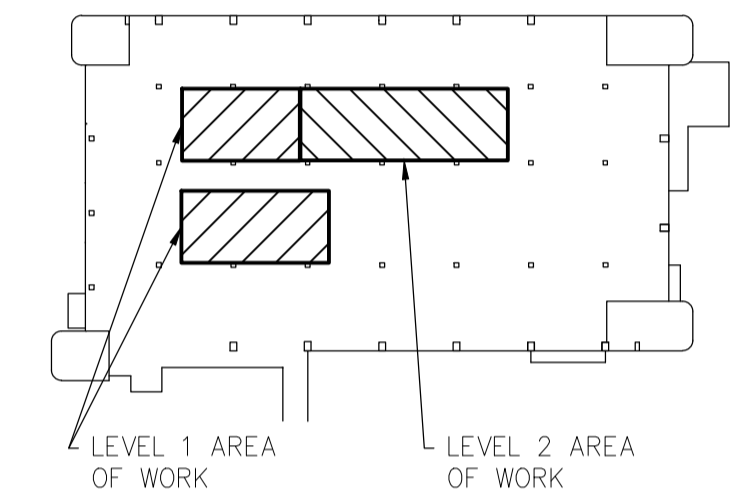
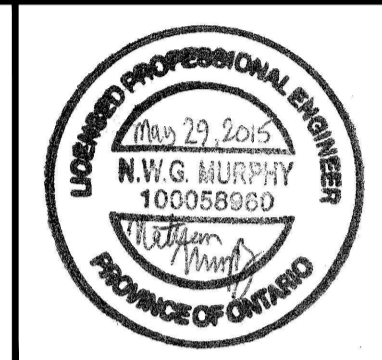
CONTRACT DRAWINGS

CONTRACT DRAWINGS FOR ELECTRICAL WORK ARE IN PART DIAGRAMMATIC, INTENDED TO CONVEY THE SCOPE OF WORK AND CONTRACTOR TO COORDINATE LAYOUT OF ELECTRICAL SYSTEMS WITH ARCHITECTURAL, STRUCTURAL, AND MECHANICAL BUILDING COMPONENTS, AS WELL AS OTHER ELECTRICAL SYSTEMS. PROVIDE ADDITIONAL JUNCTION BOXES, FITTINGS, SUPPORTS, ETC. REQUIRED TO FACILITATE THE WORK. NO EXTRA PAYMENTS ARISING FROM FAILURE TO MAKE THIS COORDINATION WILL BE CONSIDERED.

Public Works and Government Services Canada
Architectural and Engineering Services
Ontario Region
Travaux publics et Services gouvernementaux Canada
Services d'architecture et de génie
Région de l'Ontario

consultant

1345 ROSEMOUNT AVENUE
CORNWALL, ONTARIO
CANADA K6J 3E5
PHONE: 613-933-5602 FAX: 613-936-0335
WWW.WSPGROUP.COM



| revision | description | date |
|----------|-------------------|------------|
| 2 | ISSUED FOR TENDER | 2015/05/29 |
| 1 | ISSUED FOR REVIEW | 2015/04/17 |

Do not scale drawings. Verify all dimensions and conditions on site and immediately notify the engineer of all discrepancies.

| A | B | C |
|-------------------------------------|------------------------------|---|
| Detail No. | No. du détail | |
| drawing no. - where detail required | dessin no. - où détail exigé | |
| drawing no. - where detailed | dessin no. - où détaillé | |

project title
titre du projet
TORONTO HEALTH CANADA
2301 MIDLAND AVE
LABORATORY UPGRADES
Ontario

drawing title
titre du dessin
REVISED PARTIAL SINGLE LINE DIAGRAM

drawn by
dessiné par **SW**

designed by
conçu par **NM**

approved by
approuvé par **FH**

tender submission
soutmission **AQUIL ALI** project manager
administrateur de projets

project date
date du projet **2015/04/15**

project no.
no. du projet **R.054345.001**

drawing no.
no. du dessin **E4.2**

Table with 10 columns: KW, LEG, DESCRIPTION, BKR, CCT #, CCT #, BKR, DESCRIPTION, LEG, KW. Contains 72 rows of electrical component data for Panel P-115.

TYPE: SURFACE C/W BOLT-ON BKR. LOCK, DOOR & TRIM SHORT CIRCUIT RATING: 10kA
MAINS RATING: 225A
MAIN BREAKER C/W BARRIER: 225A
VOLTAGE RATING: 120/208V-3Ø-4W

LEGEND:
P-POWER, H-HEATING, L-LIGHTING, M-MOTOR, *-GFCI BKR

PANEL P-115

Table with 10 columns: KW, LEG, DESCRIPTION, BKR, CCT #, CCT #, BKR, DESCRIPTION, LEG, KW. Contains 72 rows of electrical component data for Panel P-225A.

TYPE: RECESSED C/W BOLT-ON BKR. LOCK, DOOR & TRIM SHORT CIRCUIT RATING: 10kA
MAINS RATING: 225A
MAIN BREAKER C/W BARRIER: 225A
VOLTAGE RATING: 120/208V-3Ø-4W

LEGEND:
P-POWER, H-HEATING, L-LIGHTING, M-MOTOR, *-GFCI BKR

PANEL P-225A

Table with 10 columns: KW, LEG, DESCRIPTION, BKR, CCT #, CCT #, BKR, DESCRIPTION, LEG, KW. Contains 72 rows of electrical component data for Panel P-225B.

TYPE: RECESSED C/W BOLT-ON BKR. LOCK, DOOR & TRIM SHORT CIRCUIT RATING: 10kA
MAINS RATING: 225A
MAIN BREAKER C/W BARRIER: 225A
VOLTAGE RATING: 120/208V-3Ø-4W

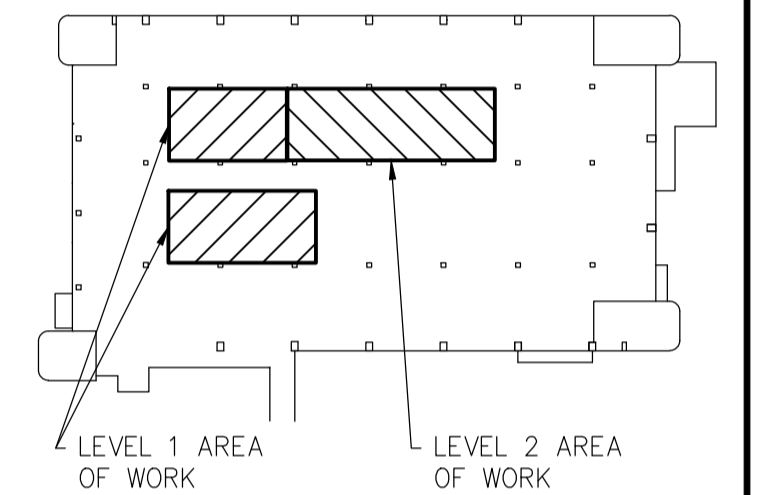
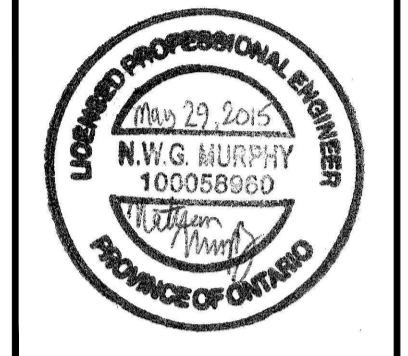
LEGEND:
P-POWER, H-HEATING, L-LIGHTING, M-MOTOR, *-GFCI BKR

PANEL P-225B

LINETYPE LEGEND table with 2 columns: Linetype, Description. Shows existing and new breaker or description line styles.

CONTRACT DRAWINGS
CONTRACT DRAWINGS FOR ELECTRICAL WORK ARE IN PART DIAGRAMMATIC, INTENDED TO CONVEY THE SCOPE OF WORK AND CONTRACTOR TO COORDINATE LAYOUT OF ELECTRICAL SYSTEMS WITH ARCHITECTURAL, STRUCTURAL, AND MECHANICAL BUILDING COMPONENTS, AS WELL AS OTHER ELECTRICAL SYSTEMS. PROVIDE ADDITIONAL JUNCTION BOXES, FITTINGS, SUPPORTS, ETC. REQUIRED TO FACILITATE THE WORK. NO EXTRA PAYMENTS ARISING FROM FAILURE TO MAKE THIS COORDINATION WILL BE CONSIDERED.

consultant
WSP
1345 ROSEMOUNT AVENUE
CORNWALL, ONTARIO
CANADA K6J 3E5
PHONE: 613-933-5602 FAX: 613-936-0335
WWW.WSPGROUP.COM



Revision table with 3 columns: revision, description, date. Shows revision 2 (ISSUED FOR TENDER, 2015/05/29) and revision 1 (ISSUED FOR REVIEW, 2015/04/17).

Do not scale drawings. Verify all dimensions and conditions on site and immediately notify the engineer of all discrepancies.

Detail No. legend table with 3 columns: Detail No., No. du détail, drawing no. - où détail exigé. Includes detail symbols A, B, and C.

project title
titre du projet
TORONTO Ontario
HEALTH CANADA
2301 MIDLAND AVE
LABORATORY UPGRADES

drawing title
titre du dessin
PANEL SCHEDULES

drawn by
dessiné par
SW

designed by
conçu par
NM

approved by
approuvé par
FH

tender
soumission
AQUIL ALI project manager
administrateur de projets

project date
date du projet
2015/04/15

project no.
no. du projet
R.054345.001

drawing no.
no. du dessin
E5.2