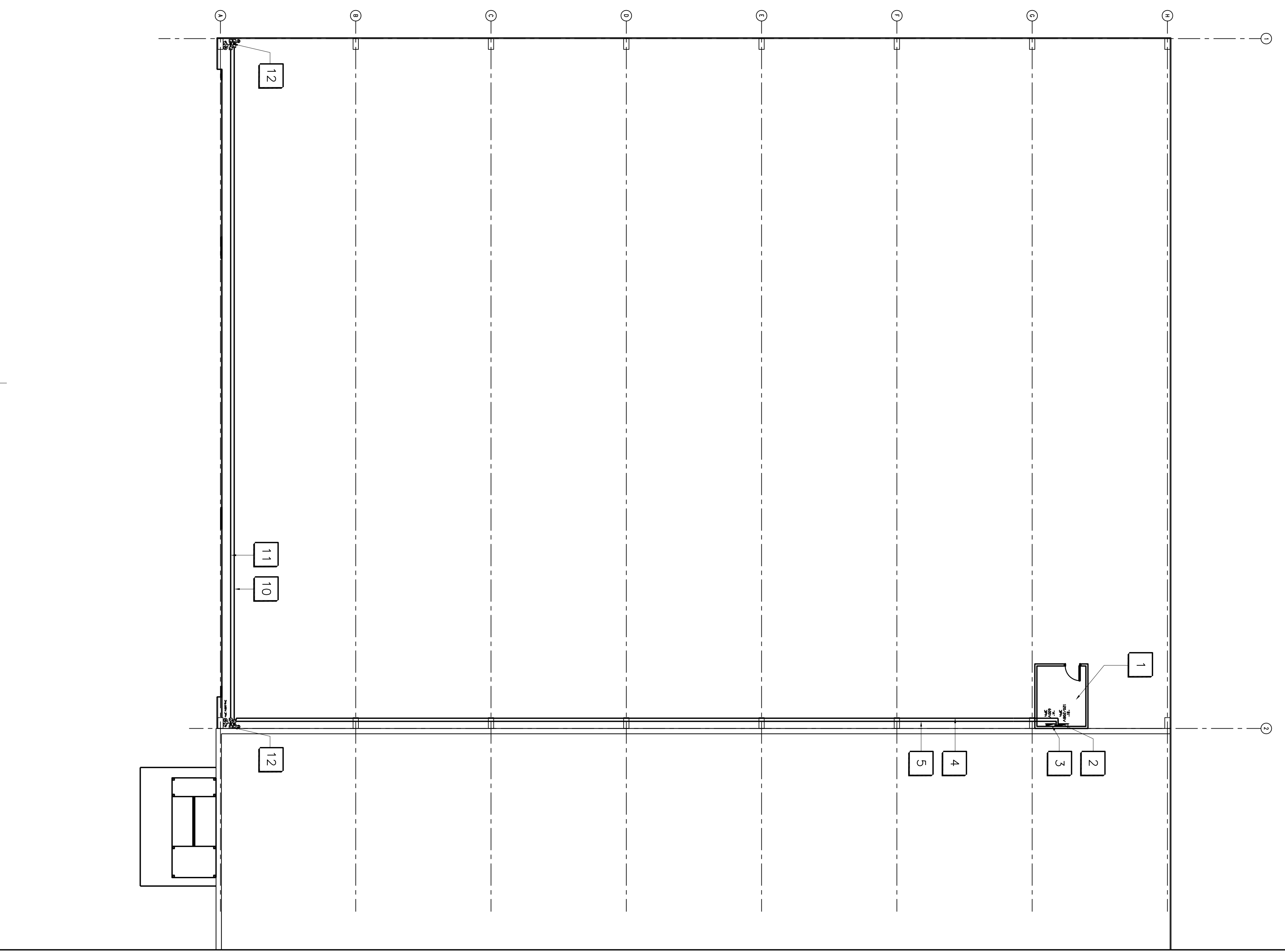
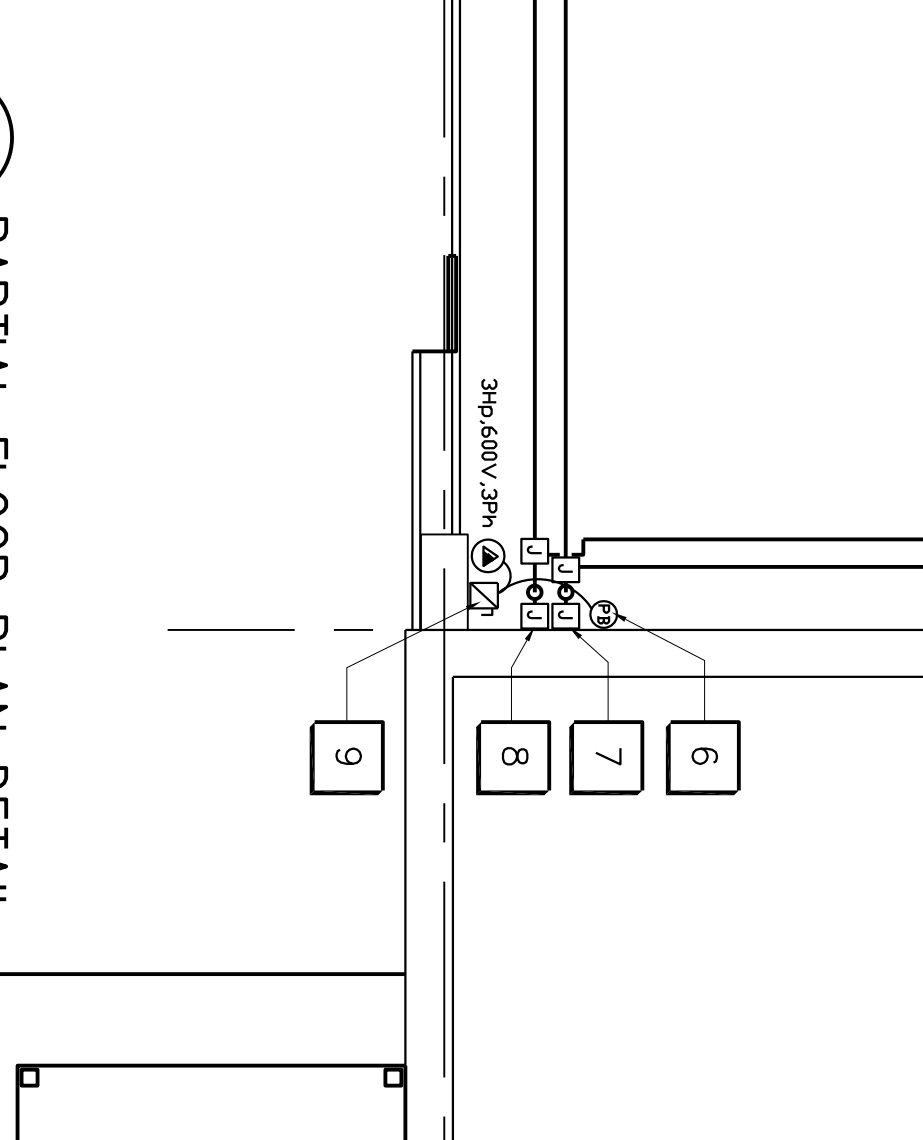


1 PARTIAL FLOOR PLAN
E-1 SCALE: 1 : 150



2 PARTIAL FLOOR PLAN DETAIL
E-1 SCALE: 1 : 50



ELECTRICAL LEGEND:

| | |
|--|---|
| | 200V 1P/1P2W RECEPTACLE |
| | 120V 1P/1P2W RECEPTACLE |
| | 120V 1P/1P2W TRANSFORMER |
| | MANUAL DISCONNECT SWITCH |
| | 240V RECEPTACLE |
| | 15A DUPLEX RECEPTACLE |
| | JUNCTION BOX |
| | ALARM / PUSH SWITCH |
| | HAND OPERATED BREAKER |
| | WALL MOUNTED ILLUMINATED "RECEPTACLE" SIGN |
| | FLOOR MOUNTED ILLUMINATED "RECEPTACLE" SIGN |
| | SPLIT CIRCUIT RECEPTACLE |
| | EMERGENCY EXIT SIGN |
| | DIRECT CONNECTION |
| | FIRE DETECTOR |
| | SMOKE DETECTOR |
| | HEAT DETECTOR |
| | SWITCH |
| | DIMMER |
| | DIMMER SATED |
| | WEATHER-PROOF OPENING FAULT CIRCUIT INTERRUPTER |
| | HAZARDOUS AREA LIGHTING |
| | HAZARDOUS AREA LIGHTING |

DRAWING NOTES:

- EXISTING ELECTRICAL ROOM TO REMAIN, MODIFY EXISTING POWER DISTRIBUTION PANELS AS REQUIRED TO PROVIDE NEW POWERS FOR NEW HANGAR DOOR OPENERS.
- EXISTING ELECTRICAL DISTRIBUTION PANEL, "A" 600V, 3PH, 60HZ, 25AMP TO REMAIN, PROVIDE TWO NEW 3 POLE, 600V, 3PH, 15AMP BREAKERS FOR NEW HANGAR DOOR OPENERS, ELECTRIC MOTORS, NEW BREAKERS TO MATCH EXISTING DISTRIBUTION PANEL.
- EXISTING ELECTRICAL DISTRIBUTION PANEL, "B" 120/208V, 3PH, 60HZ, 25AMP TO REMAIN, PROVIDE SIX NEW DEDICATED CIRCUITS AND 120V, 1PH, 60HZ BREAKERS FOR HANGAR DOOR OPERATORS, 20A, 120V, 1PH, 60HZ BREAKERS TO MATCH EXISTING DISTRIBUTION PANEL, ONE BREAKER FOR GENERAL WINDING, 60A, 120V, 1PH, 60HZ, 15AMP CIRCUIT, ONE BREAKER FOR MISCELLANEOUS 120V, 1PH, 60HZ, 15AMP CIRCUIT. (TYPICAL FOR TWO LOCATIONS).
- PROVIDE 32mm DIAMETER "EWT" CONDUIT RUN UP BETWEEN JOISTS SPACE COMPLETE WITH 8 DEDICATED CIRCUITS 120V, 1PH, 60HZ AND WIRING BY SIZE #10 AWG COPPER WITH 2 DEDICATED CIRCUITS 600V, 3PH, 60HZ AND WIRING BY SIZE #10 AWG COPPER ALL CONDUIT HANGERS AND SUPPORTS AS PER ELECTRICAL CODE. PROVIDE ALL CONDUIT HANGERS AND SUPPORTS AS PER ELECTRICAL CODE.
- PROVIDE 32mm DIAMETER "EWT" CONDUIT RUN UP BETWEEN JOISTS SPACE COMPLETE WITH 2 DEDICATED CIRCUITS 600V, 3PH, 60HZ AND WIRING BY SIZE #10 AWG COPPER ALL CONDUIT HANGERS AND SUPPORTS AS PER ELECTRICAL CODE.
- PROVIDE CONTROL WIRING C/W "EWT" CONDUITS BETWEEN OPEN PUSH BUTTON UNITS AND DOOR OPERATOR CONTROL PANEL SUPPLY PER DOOR MANUFACTURER. ALL THIS WORK SHALL BE INSTALLED FROM 10' FROM WINDING AND CONDUITS INSTALLATION (TYPICAL FOR 2 LOCATIONS).
- PROVIDE ELECTRICAL DISTRIBUTION JUNCTION BOX, 900mm ABOVE FINISH FLOOR C/W THREE DEDICATED POWER CIRCUITS 120V, 1PH, 60HZ, AS DESCRIBED ABOVE NOTE # 3. ELECTRICAL CONTRACTOR TO COORDINATE ALL THIS WORK WITH DOOR INSTALLER PRIOR TO FINISH WIRING AND CONDUITS INSTALLATION (TYPICAL FOR 2 LOCATIONS).
- PROVIDE ELECTRICAL DISTRIBUTION JUNCTION BOX, 900mm ABOVE FINISH FLOOR C/W COORDINATE ALL THIS WORK WITH DOOR INSTALLER PRIOR TO FINISH WIRING AND CONDUITS INSTALLATION (TYPICAL FOR 2 LOCATIONS).
- PROVIDE WALL MOUNTED DISCONNECT SWITCH FOR DOOR MOTOR 3PH, 600V, 3PH, 20A, PANEL "A" CIRCUITS 31.3/3.5 AND 42.2/4.4, ELECTRICAL CONTRACTOR TO COORDINATE ALL THIS WORK WITH DOOR INSTALLER PRIOR TO FINISH WIRING AND CONDUITS INSTALLATION (TYPICAL FOR 2 LOCATIONS).
- PROVIDE 25mm DIAMETER "EWT" CONDUIT RUN UP BETWEEN JOISTS SPACE COMPLETE WITH 3 DEDICATED CIRCUITS 120V, 1PH, 60HZ AND WIRING BY SIZE #10 AWG COPPER ALL CONDUIT HANGERS AND SUPPORTS AS PER ELECTRICAL CODE.
- PROVIDE 25mm DIAMETER "EWT" CONDUIT RUN UP BETWEEN JOISTS SPACE COMPLETE WITH 1 DEDICATED CIRCUIT 600V, 3PH, 60HZ AND WIRING BY SIZE #10 AWG COPPER ALL CONDUIT HANGERS AND SUPPORTS AS PER ELECTRICAL CODE. PROVIDE ALL CONDUIT HANGERS AND SUPPORTS AS PER ELECTRICAL CODE.
- REFER TO DRAWING NOTES #6, 7, 8 & 9.

WOODMAN ARCHITECT
A S S O C I A T E S L T D.

4 BEECHWOOD, SUITE 201, OTTAWA, ONTARIO, CANADA K1L 8J9
TEL: 613 228 9850 FAX: 613 228 9848
mailbox@woodmanarchitect.com

Anures Engineering Group Inc.
Professional Engineers
Registered Professional Engineers
159 Columbia Road Unit 1, Ottawa, Ontario K2E 7T4
Phone: 613-252-8888 Fax: 613-252-5379

Stamp/Emplacement: **AS SHOWN**

KEY PLAN
PLAN-REFERE

AS SHOWN

North/ Nord

| revision | description | date |
|----------|-----------------------|----------|
| 01 | ISSUED FOR 98% REVIEW | 23-10-15 |
| 02 | | |
| 03 | | |
| 04 | | |
| 05 | | |

project: **HANGAR DOOR** project: **ONTARIO**

drawing no: **ELECTRICAL NEW WORK FLOOR PLAN**

designed: S.J.S. date: 23-10-2015

drawn: S.J.S. date: 23-10-2015

reviewed: date: approved:

tender: **A. CHOW** submission: **Representant Ministeriel**

project no: **PTS 3447** no. du projet

scale: **AS SHOWN** echelle

drawing no. **E-1 of 1** no. du dessin