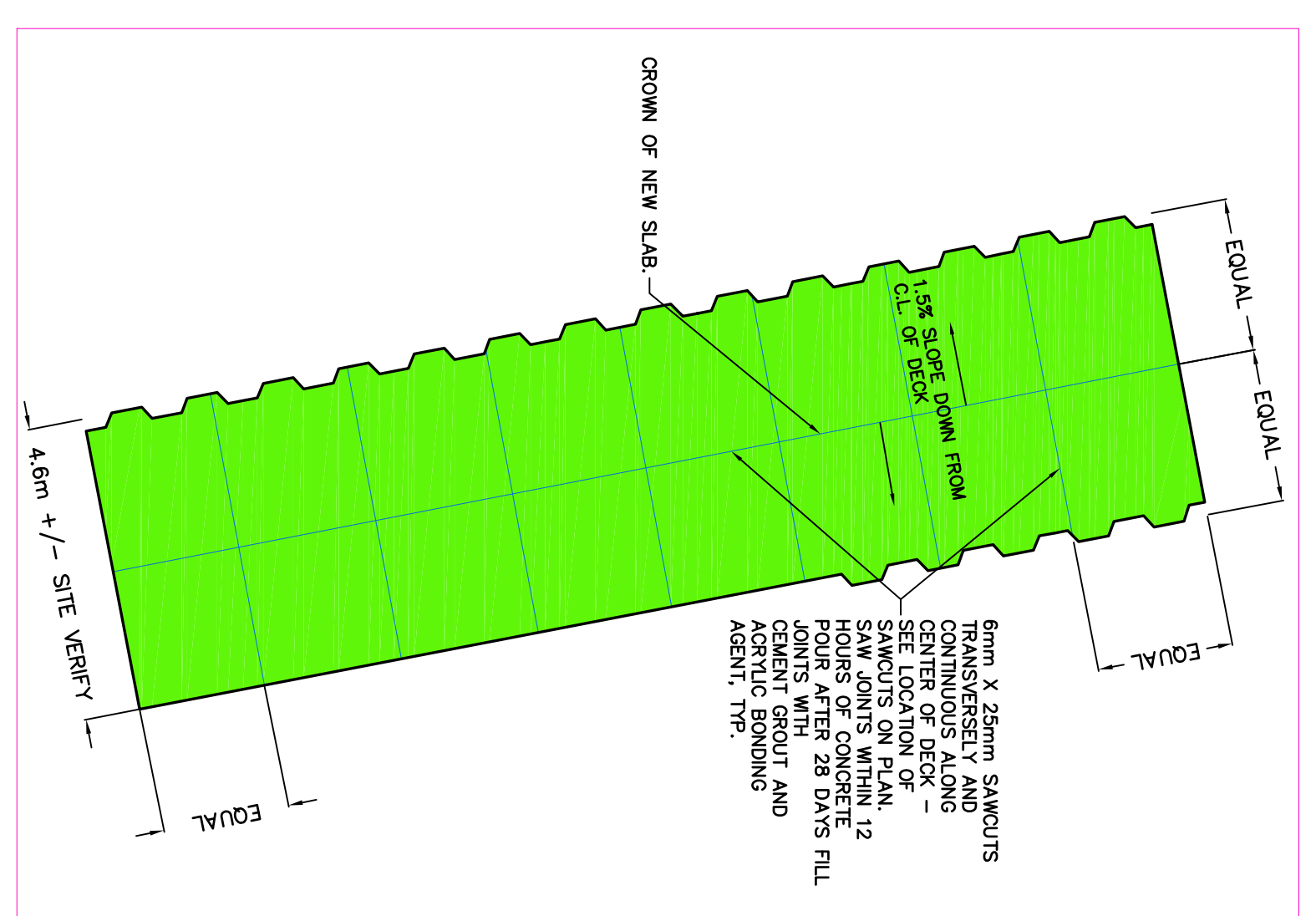
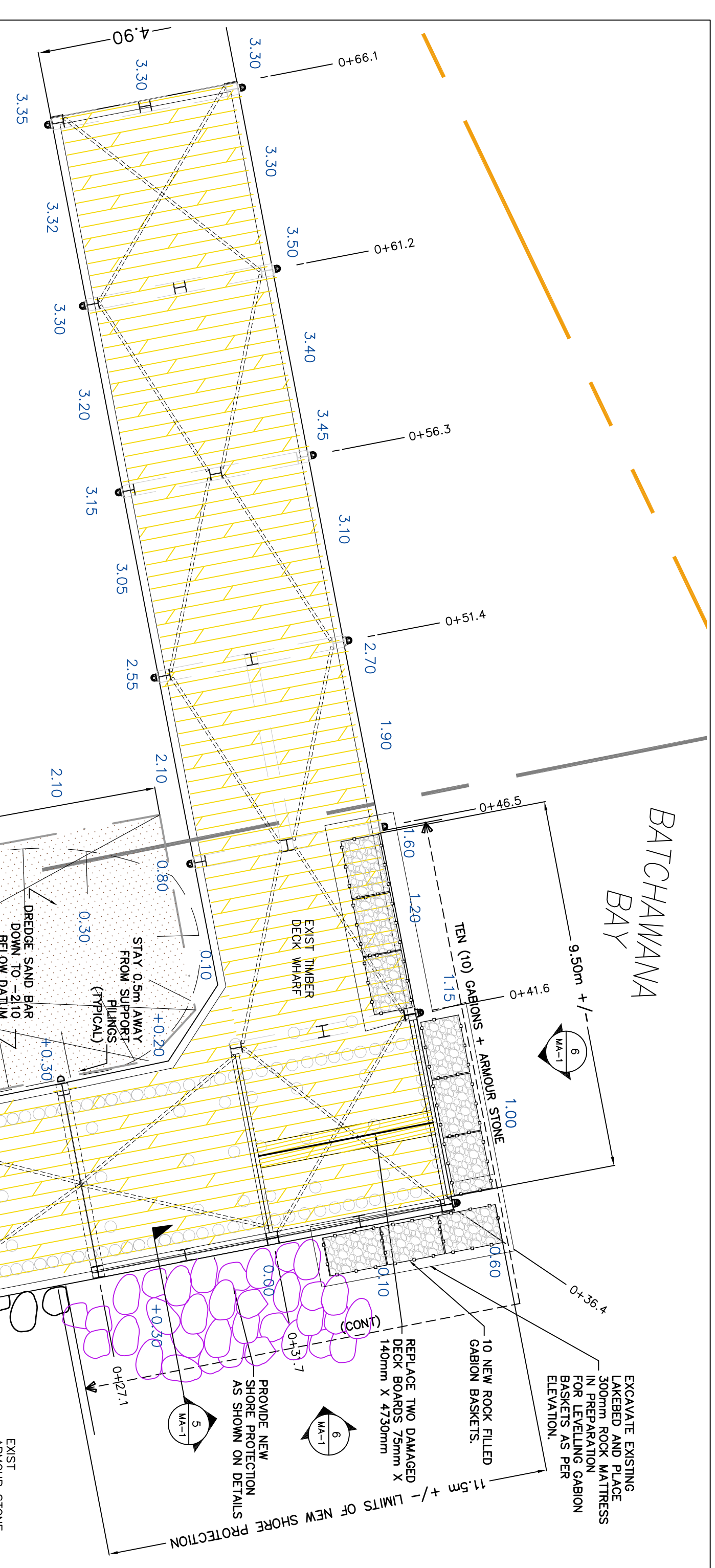
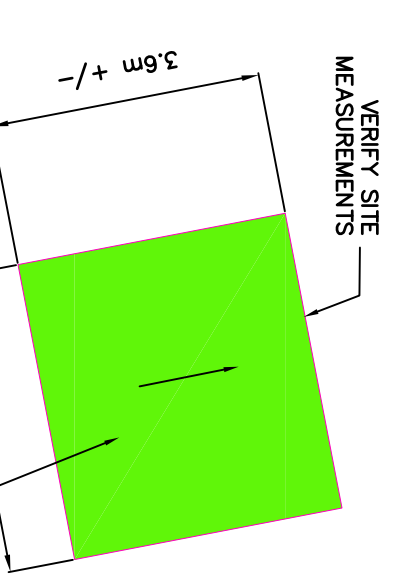


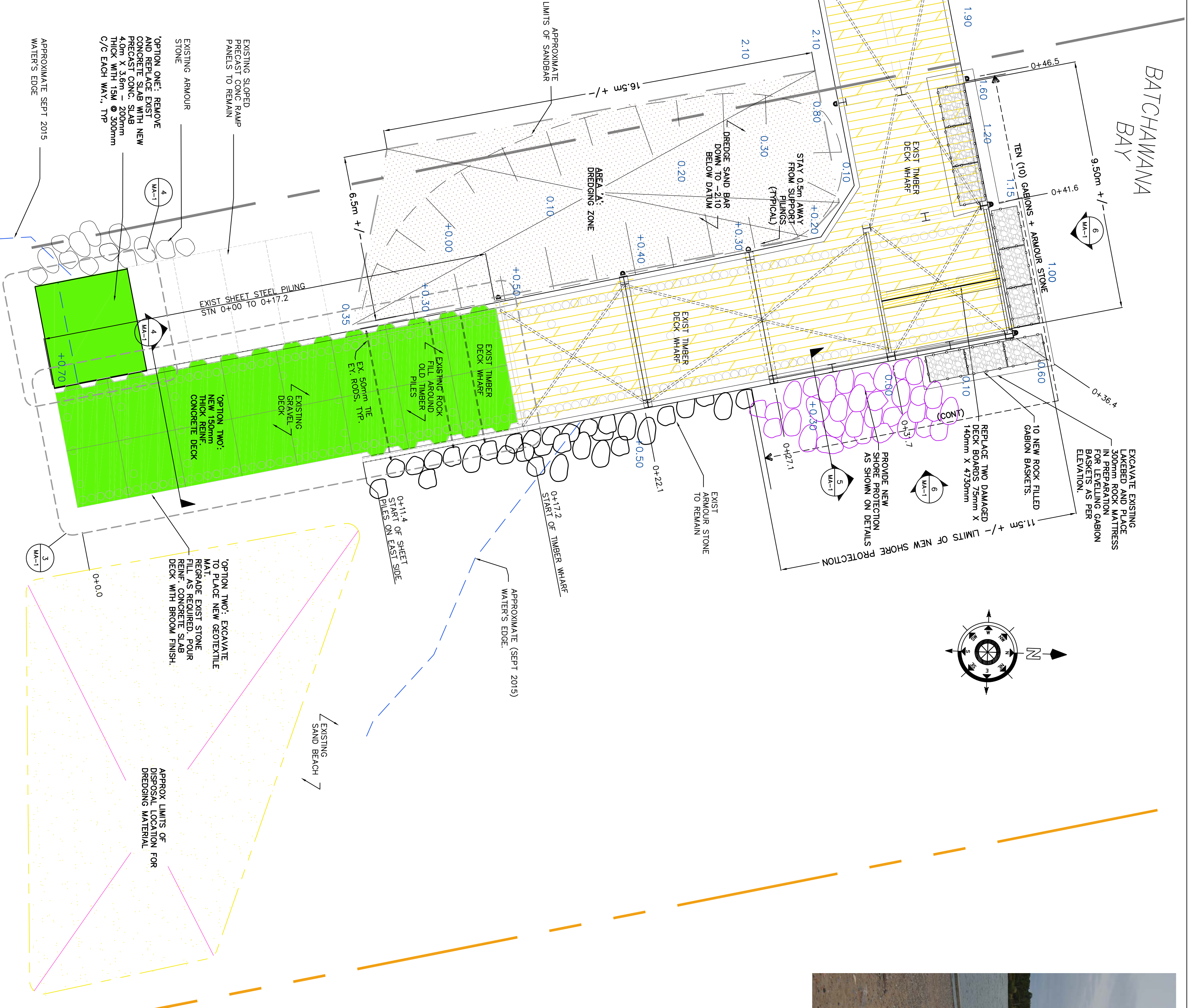
BATCHAWANA BAY



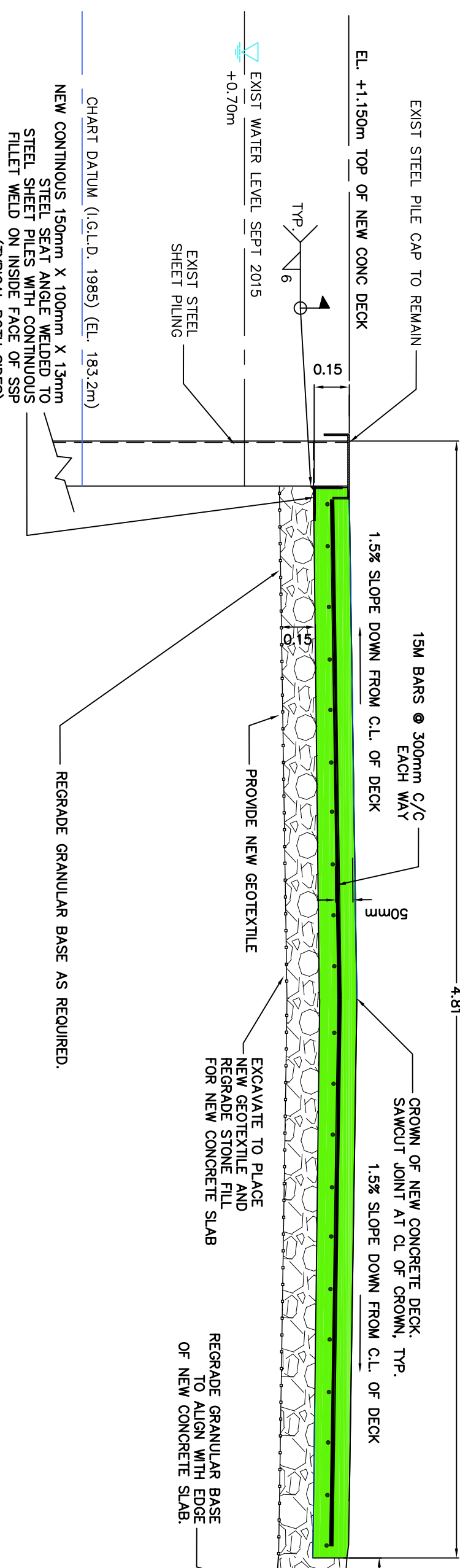
CONC DECK EXPANSION JOINT PLAN
SCALE: 1:100 - OPTION TWO



PRECAST CONC RAMP
SCALE: 1:100 - OPTION ONE



EXISTING SITE PLAN
SCALE: 1:100

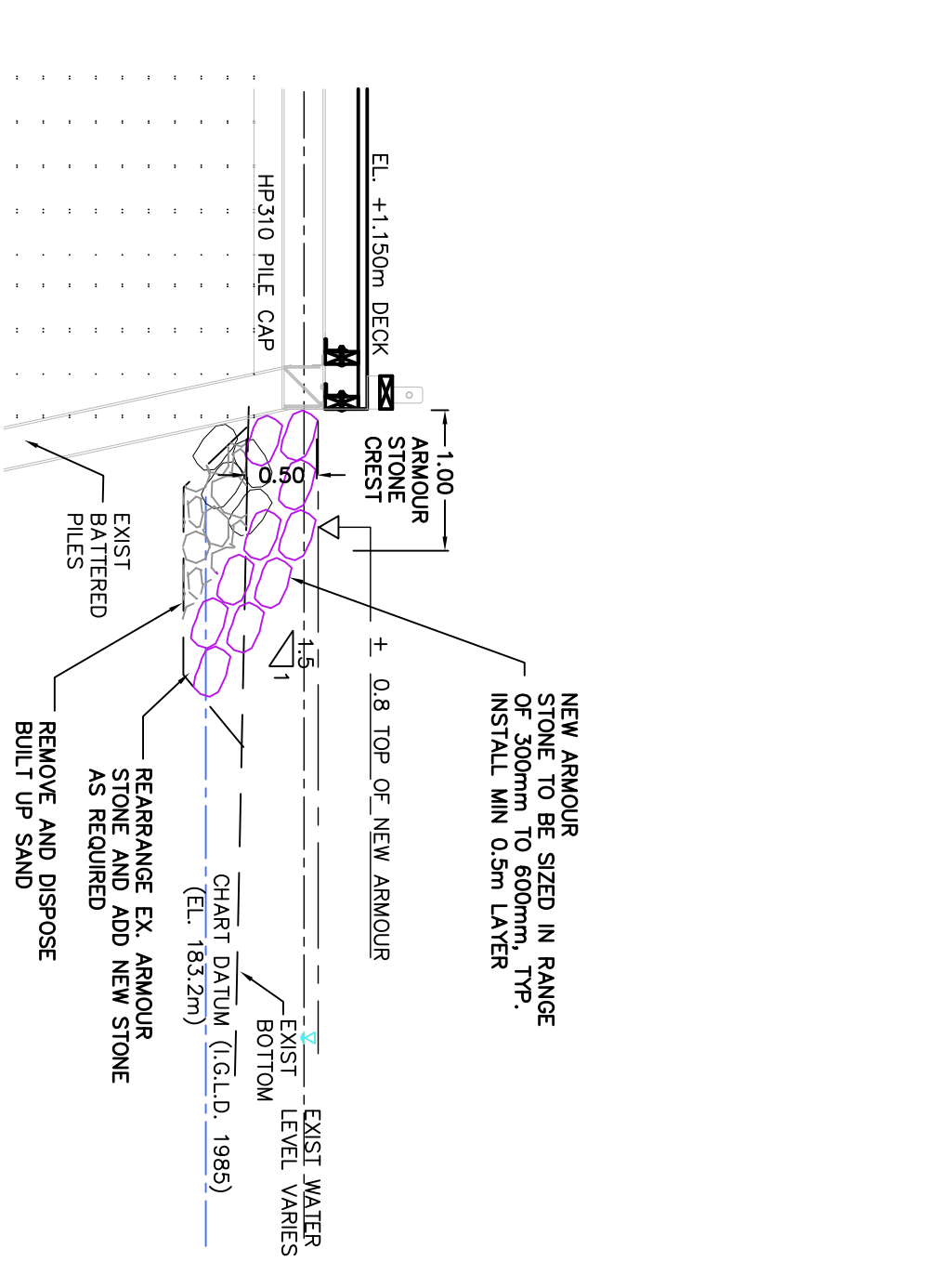


DETAIL AT EXIST PILE CAP AND NEW CONC SLAB
SCALE: 1:20 - OPTION TWO

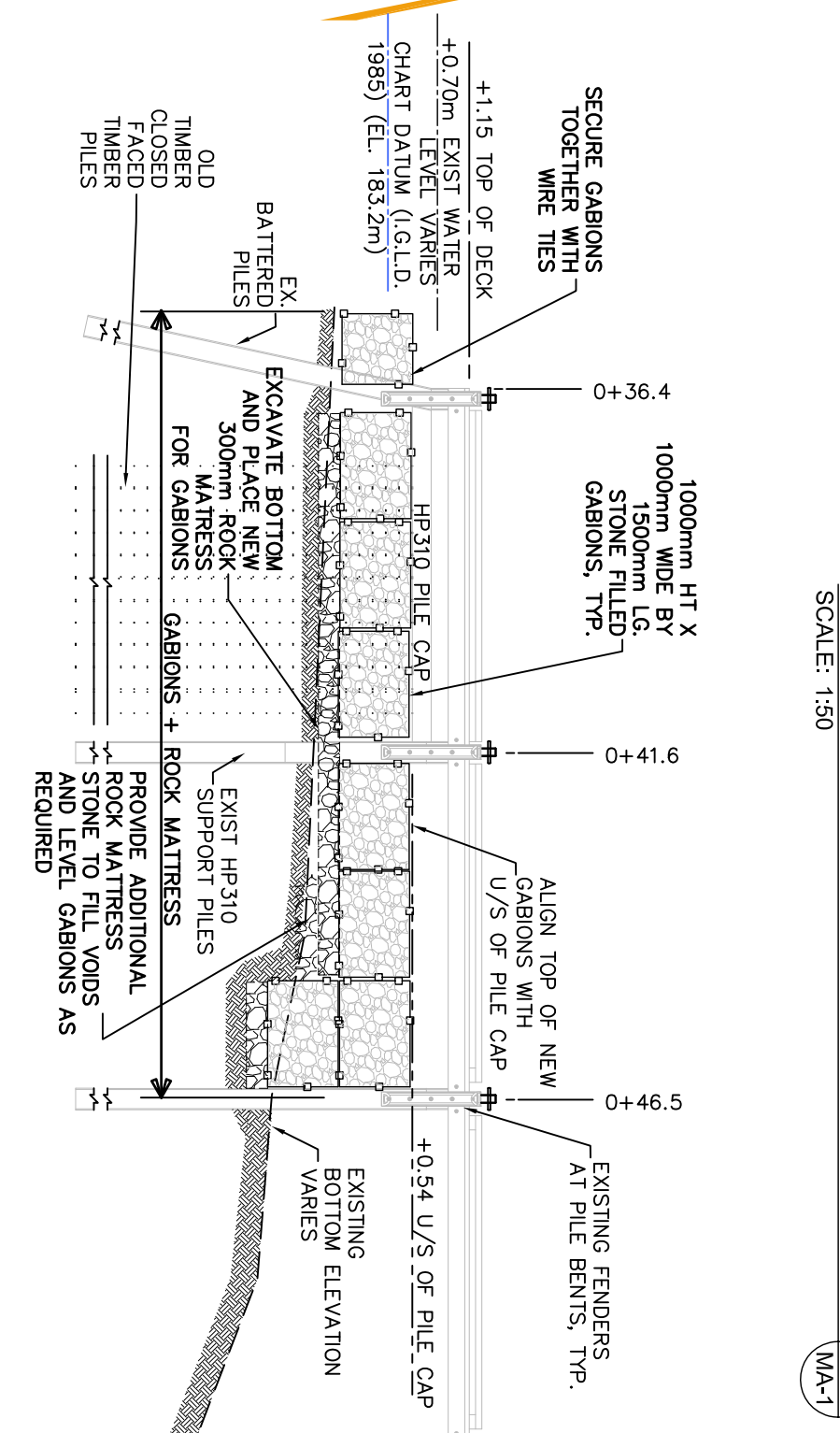


PHOTO OF EXIST ARMOUR STONE PROTECTION
SCALE: N/S

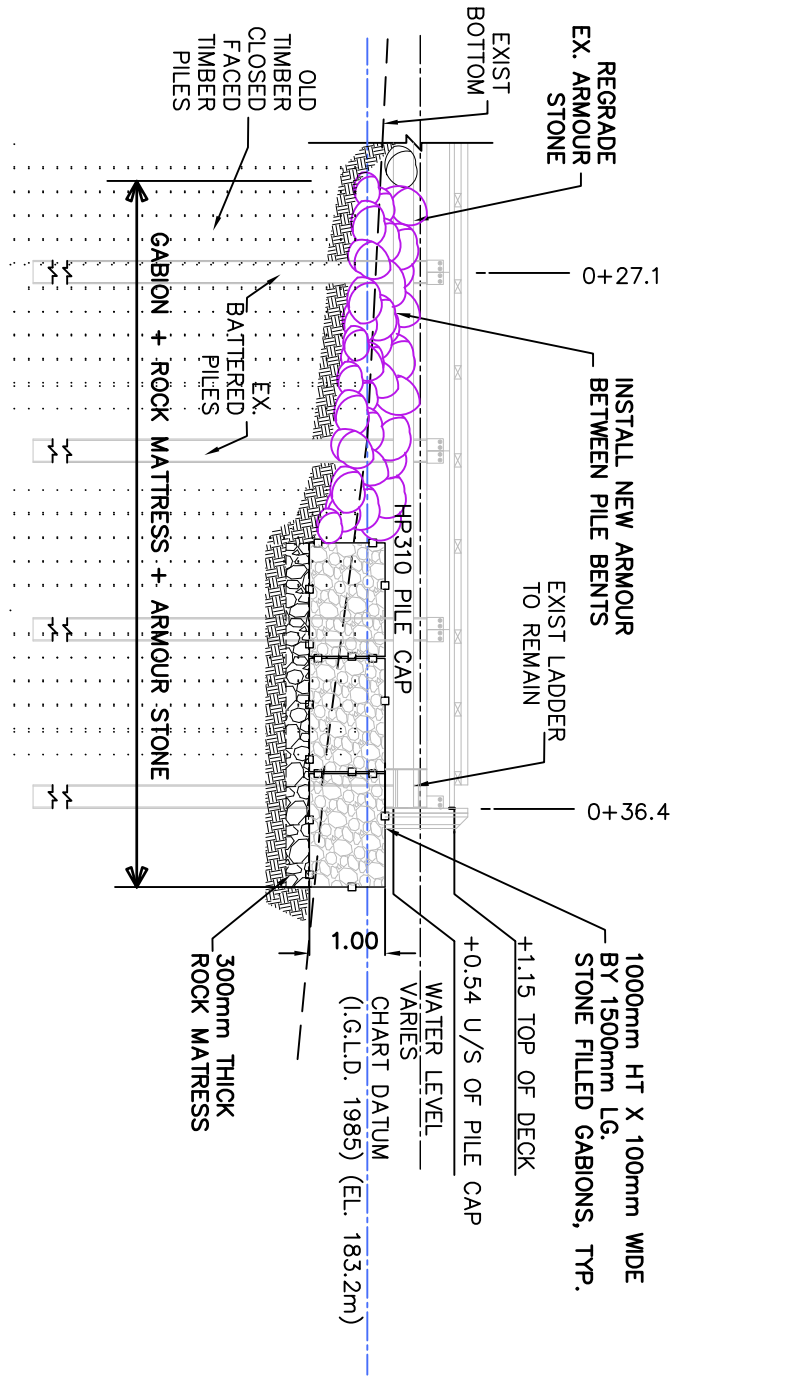
- GENERAL NOTES:**
1. THE CONTRACTOR SHALL CONFIRM THE POSITION OF ALL UTILITIES AND STRUCTURES WITHIN THE WORK AREAS AND INSURE HIMSELF AS WELL AS ASSUME LIABILITY FOR DAMAGE TO THEM.
 2. ELEVATIONS WERE TAKEN ON AUGUST 28 2015
 3. CHART DATUM FOR LAKE SUPERIOR IS 183.2m ABOVE SEA LEVEL.
 4. WATER LEVEL AT THE TIME OF SURVEY WAS 0.70 ABOVE CHART DATUM
 5. COORDINATES FOR HORIZONTAL CONTROL ARE GIVEN ON THE UTM MAPPING PLANE, ZONE 17, USING THE NORTH AMERICAN DATUM OF 1983 (NAD83)
 6. ALL MEASUREMENTS IN METERS UNLESS OTHERWISE NOTED.



SECTION THRU NEW ARMOUR STONE
SCALE: 1:50



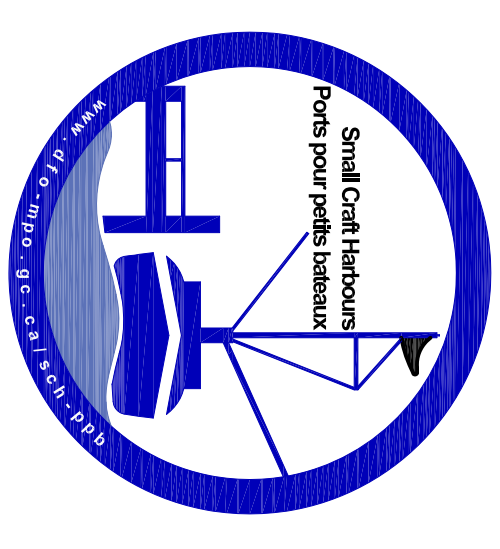
PROPOSED PARTIAL NORTH ELEVATION
SCALE: 1:100 (S/N 07-36.5 TO 07-48.5)



PROPOSED EAST ELEVATION
SCALE: 1:100 (S/N 07-20.0 TO 07-36.5)

GOVERNMENT OF CANADA
FISHERIES AND OCEANS
PÊCHES ET OcéANS

SMALL CRAFT HARBOURS
CENTRAL AND ARCTIC REGION



- NOTES:**
1. ELEVATIONS WERE TAKEN ON AUGUST 28 2015
 2. CHART DATUM FOR LAKE SUPERIOR IS 183.2m ABOVE SEA LEVEL.
 3. WATER LEVEL AT THE TIME OF SURVEY WAS 0.70 ABOVE CHART DATUM
 4. COORDINATES FOR HORIZONTAL CONTROL ARE GIVEN ON THE UTM MAPPING PLANE, ZONE 17, USING THE NORTH AMERICAN DATUM OF 1983 (NAD83)
 5. ALL MEASUREMENTS IN METERS UNLESS OTHERWISE NOTED.

LEGEND

- PROJECT BASELINE
- - - EXISTING PIPE BOLLARD
- - - PROPERTY LINE
- - - EXIST SOUNDING ELEVATION BELOW DATUM
- - - EXIST SOUNDING ELEVATION ABOVE DATUM
- - - NEW CONCRETE SAWCUT
- - - DIRECTION OF SURFACE FLOW
- - - NEW CONCRETE DECK
- - - EXIST HP310 X 110 PILES WITH FENDER

REVISIONS:

REV	TO OPTIONS NOTES	DATE
1	ISSUED FOR TENDER	2015-11-05
0	AS NOTED	2015-10-27

PROJECT: SHORE PROTECTION

DESCRIPTION: PLANS, DETAILS AND SECTIONS

DATE: OCT. 2015

LOCATION: BATCHAWANA BAY ONTARIO

DRAWN: D.W.

APPROVED: M.M.

DRAWING NO.: MA-1

LOCATOR CODE: 4513