





DO NOT SCALE DRAWINGS

Revision/ Révision	Description/Description	Date/Date
-----------------------	-------------------------	-----------

Fisheries & Oceans Canada  
Small Craft Harbours Branch  
Pacific Division

200 - 401 Burrard Street  
Vancouver, Canada, V6C 3S4

Project title/Titre du projet

STEVESTON PARAMOUNT

Approved by/Approuvé par  
M.B.

Designed by/Concept par  
A.S.

Drawn by/Dessiné par  
WSL

PWOSC Project Manager/Administrateur de Projets TPSGC

PWOSC, Architectural and Engineering Resources Manager/  
Ressources Architectural et de Directeur d'ingénierie, TPSGC

Client/client

Drawing title/Titre du dessin

DREDGE AND DISPOSAL  
AT SEA LOCATIONS

Project No./No. du projet	Sheet/Feuille	Revision no./ La Révision no.
---------------------------	---------------	----------------------------------

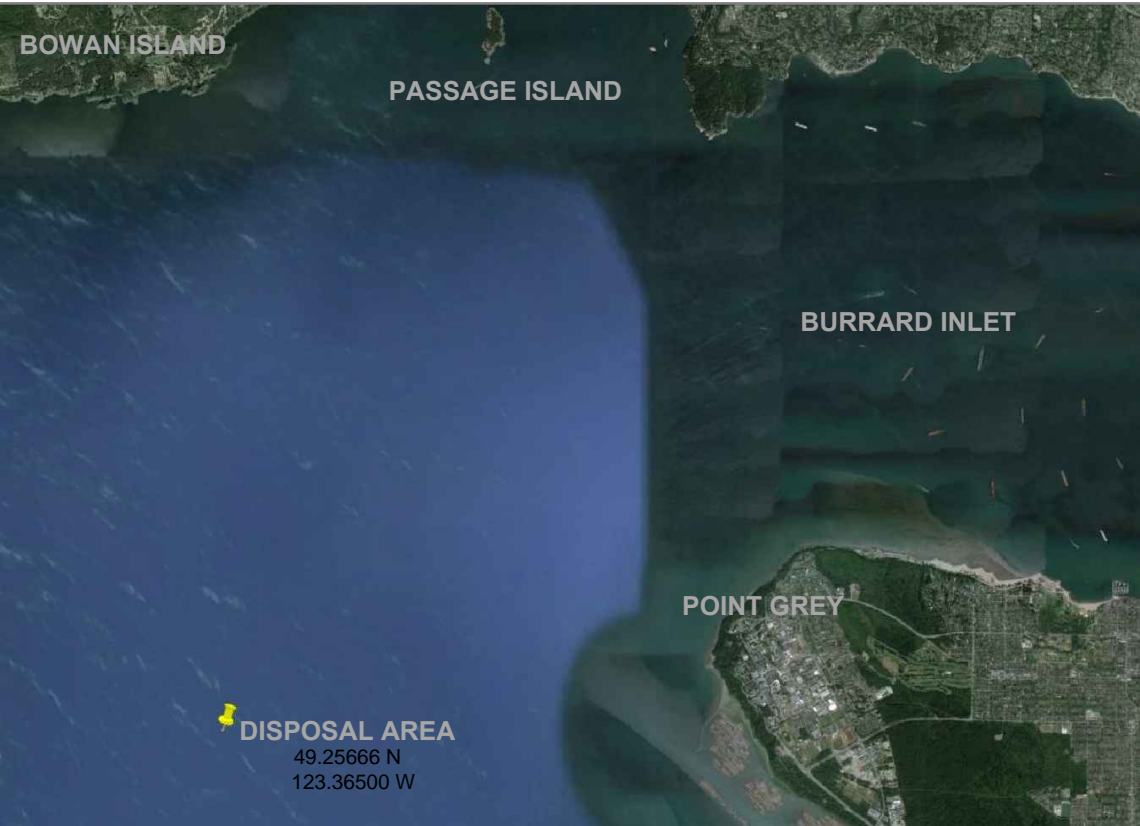
SP-DR

002

OF





DREDGE AREA



DISPOSAL AT SEA LOCATION

LEGEND

-  AREA TO DREDGE - UPLAND DISPOSAL
-  AREA TO DREDGE - DISPOSAL AT SEA







LEGEND:		DRAWING DESCRIPTION:		NOTES:		CLIENT:		REV.		DESCRIPTION		DATE		SURVEYED BY: FRPD Survey		SURVEY DATE: 2014-11-27		<div><div>FRPD</div><div>Since 1911</div><div>FRASER RIVER PILE &amp; DREDGE (GP) INC.</div></div>	
<div><div>Major Contour</div><div>Minor Contour</div></div>		RECONNAISSANCE SURVEY OF STEVESTON HARBOUR		<div><div>• HORIZONTAL POSITIONING BY AN APPLANIX POS/MV TO UTM NAD 83.</div><div>• VESSEL DYNAMICS CORRECTED BY AN APPLANIX POS/MV IMU.</div><div>• SOUNDINGS OBTAINED USING A RESON SEABAT 7125 MULTIBEAM ECHOSOUNDER.</div><div>• DATA COLLECTION AND PROCESSING BY QINSY AND CARIS SOFTWARE.</div><div>• DEPTHS ARE METERS AND ARE REDUCED TO CHART DATUM.</div><div>• CHART DATUM IS BASED ON THE LOW WATER DATUM ESTABLISHED BY THE CANADIAN HYDROGRAPHIC SERVICE IN NOVEMBER 1996.</div></div>		<div><div>• CHART DATUM IS 2.25m BELOW GEODETIC DATUM IN CANNERY CHANNEL.</div><div>• CONTOURS AND SURFACES ARE GENERATED ON 0.5m GRID DATA.</div><div>• DEPTHS ARE SHOWN AT 5.0 m SPACING FOR PRESENTATION.</div><div>• BACKGROUND FEATURES FROM AERIAL PHOTOGRAPHY FLOWN IN 1989 AND/OR 2002 AND PROVIDED BY PWGSC.</div></div>								DRAWN BY: M. Sagun ; K. Witkowski		DATE DRAWN: 2015-10-23			
														PROCESSED BY: FRPD Survey		DRAWING NO.: 1 of 2			
				<div>SURVEYS ARE FOR DREDGE OPERATIONS ONLY AND ARE NOT TO BE USED FOR NAVIGATION PURPOSES</div>										SCALE: 1 : 650		JOB NO.:			





<div>LEGEND:</div> <div><div>Major Contour</div><div>Minor Contour</div></div>	<div>DRAWING DESCRIPTION:</div> <div>RECONNAISSANCE SURVEY OF STEVESTON HARBOUR</div>	<div>NOTES:</div> <div><div><div>- HORIZONTAL POSITIONING BY AN APPLANIX POSMV TO UTM NAD 83.</div><div>- VESSEL DYNAMICS CORRECTED BY AN APPLANIX POSMV IMU.</div><div>- SOUNDINGS OBTAINED USING A RESON SEABAT 7125 MULTIBeam ECHOSOUNDER.</div><div>- DATA COLLECTION AND PROCESSING BY GINSY AND CARIS SOFTWARE.</div><div>- DEPTHS ARE METERS AND ARE REDUCED TO CHART DATUM.</div><div>- CHART DATUM IS BASED ON THE LOW WATER DATUM ESTABLISHED BY THE CANADIAN HYDROGRAPHIC SERVICE IN NOVEMBER 1986.</div></div><div><div>- CHART DATUM IS 2.25m BELOW GEODETIC DATUM IN CANNERY CHANNEL.</div><div>- CONTOURS AND SURFACES ARE GENERATED ON 0.5m GRID DATA.</div><div>- DEPTHS ARE SHOWN AT 5.0 m SPACING FOR PRESENTATION.</div><div>- BACKGROUND FEATURES FROM AERIAL PHOTOGRAPHY FLOWN IN 1989 AND/OR 2002 AND PROVIDED BY PWGSC.</div></div><div><div>SURVEYS ARE FOR DREDGE OPERATIONS ONLY</div><div>AND ARE NOT TO BE USED FOR NAVIGATION PURPOSES</div></div></div>	<div>CLIENT:</div>	<div>REV.</div>	<div>DESCRIPTION</div>	<div>DATE</div>	<div>SURVEYED BY: FRPD Survey</div>	<div>SURVEY DATE: 2014-11-27</div>	<div><div><div>FRPD</div><div>Since 1911</div><div>FRASER RIVER PILE &amp; DREDGE (GP) INC.</div></div></div>
							<div>DRAWN BY: M. Sagun : K. Witkowski</div>	<div>DATE DRAWN: 2015-10-23</div>	
							<div>PROCESSED BY: FRPD Survey</div>	<div>DRAWING NO.: 2 of 2</div>	
							<div>SCALE: 1 : 650</div>	<div>JOB NO.:</div>	

S:\Dredging\Survey\00 Dredge Progress\2014-2015\03 Secondary Channel\141127Steveston Harbour\Steveston Chevron pLOT.dwg, 23/10/2015 8:45:56 AM, M.Saun