



RETURN BIDS TO:
RETOURNER LES SOUMISSIONS À:
Public Works and Government Services Canada
ATB Place North Tower
10025 Jasper Ave./10025 ave. Jasper
5th floor/5e étage
Edmonton
Alberta
T5J 1S6
Bid Fax: (780) 497-3510

SOLICITATION AMENDMENT MODIFICATION DE L'INVITATION

The referenced document is hereby revised; unless otherwise indicated, all other terms and conditions of the Solicitation remain the same.

Ce document est par la présente révisé; sauf indication contraire, les modalités de l'invitation demeurent les mêmes.

Comments - Commentaires

Vendor/Firm Name and Address
Raison sociale et adresse du
fournisseur/de l'entrepreneur

Issuing Office - Bureau de distribution
Public Works and Government Services Canada
ATB Place North Tower
10025 Jasper Ave./10025 ave Jasper
5th floor/5e étage
Edmonton
Alberta
T5J 1S6

Title - Sujet Stavelly Research Station Demolition	
Solicitation No. - N° de l'invitation E0209-161711/A	Amendment No. - N° modif. 001
Client Reference No. - N° de référence du client AAFC E0209-161711	Date 2015-12-07
GETS Reference No. - N° de référence de SEAG PW-\$PWU-183-10640	
File No. - N° de dossier PWU-5-38255 (183)	CCC No./N° CCC - FMS No./N° VME
Solicitation Closes - L'invitation prend fin at - à 02:00 PM on - le 2016-01-07	Time Zone Fuseau horaire Mountain Standard Time MST
F.O.B. - F.A.B. Specified Herein - Précisé dans les présentes Plant-Usine: <input type="checkbox"/> Destination: <input type="checkbox"/> Other-Autre: <input checked="" type="checkbox"/>	
Address Enquiries to: - Adresser toutes questions à: Tikhonovitch (RPC), Alex	Buyer Id - Id de l'acheteur pwu183
Telephone No. - N° de téléphone (780) 901-7940 ()	FAX No. - N° de FAX (780) 497-3510
Destination - of Goods, Services, and Construction: Destination - des biens, services et construction:	

Instructions: See Herein

Instructions: Voir aux présentes

Delivery Required - Livraison exigée	Delivery Offered - Livraison proposée
Vendor/Firm Name and Address Raison sociale et adresse du fournisseur/de l'entrepreneur	
Telephone No. - N° de téléphone Facsimile No. - N° de télécopieur	
Name and title of person authorized to sign on behalf of Vendor/Firm (type or print) Nom et titre de la personne autorisée à signer au nom du fournisseur/de l'entrepreneur (taper ou écrire en caractères d'imprimerie)	
Signature	Date

Project Title:	Addendum No:
Stavely Agricultural Research Substation Demolition	001
Project Location:	Project Number:
Agricultural Research Substation Stavely, Alberta	R.064007.022
	Date:
	December 2, 2015
The following changes in the bid documents are effective immediately. This addendum will form part of the contract documents	
Drawings	
No Changes	
Specifications	
1 Section 00 00 00 – Table of Contents	
.1 Delete article and replace with attached TOC	
2 Section 01 00 00 – General Requirements	
4.2.4 Delete article entirely and with replace with 'Provide and pay for all temporary power (including generator), lighting, and satellite cell phone capable of service for on-site construction teleconference meetings. Provide and pay for these services until a Certificate of Interim Completion is issued.'	
3 Section 02 41 16 – Structure Demolition	
1.5 Add article	
.3 Demolition Permit	
.1 Upon contractor award, the contractor is responsible to apply and pay for a demolition permit from Superior Safety Codes located at 422 North Mayor Magrath Drive in Lethbridge, Alberta prior to mobilization to site. The contractor will require a site plan showing structures to be demolished (to be provided) and fee (to be determined). Permits are issued every Wednesday.	
3.1.3 Add article	
.5 Contractor shall remove and dispose of propane tanks (reference drawing number A14) in accordance with the following link: https://www.ec.gc.ca/lcpe-cepa/default.asp?lang=En&n=61B26EE8-1&printfullpage=true#wsDA816327	
4 Section 02 65 00 – Aboveground Storage Tank Removal (reference drawing number A13).	
1.1 References	
.1 Canadian Council of Ministers of the Environment (CCME)	
.1 Delete article and replace with 'PN 1326 – July 2003, Environmental Code of Practice for Aboveground and Underground Storage Tank Systems Containing Petroleum and Allied Petroleum Products, updated January 2013.'	
.1 Delete article and replace with the following link: http://www.ec.gc.ca/lcpe-cepa/default.asp?lang=En&n=61B26EE8	
.2 Delete article and replace with the following link: http://laws.justice.gc.ca/eng/regulations/SOR-2008-197/FullText.html	
.3 Delete article.	

5 General – Site Access Protocol

A temporary field authority (TFA) must be obtained prior to accessing the site. This will be provided during the construction start-up meeting. A sample of the TFA is included.

Division 01 - General Requirements

01 00 00	General Requirements	3
01 11 00	Summary of Work	6
01 31 19	Project Meetings	4
01 35 32	Site Specific Health and Safety Plan	11
01 35 43	Environmental Procedures	5
N/A	Mitigation Measures and Report Form	5
01 52 00	Construction Facilities	3
01 53 00	Mobilization and Demobilization	1
01 56 00	Temporary Barriers and Closures	2
01 77 00	Closeout Procedures	1

Division 02 – Existing Site Conditions

02 41 16	Structure Demolition	9
02 65 00	Aboveground Storage Tank Removal	4
02 65 01	Underground Storage Tank Removal	4
02 81 01	Hazardous Materials	10
02 82 00.01	Asbestos Abatement Minimum Precautions	6
02 83 19B	Lead-Based Paint Removal and Disposal	4
02 84 00	Polychlorinated Biphenyls	7

Division 31 – Earthwork

32 91 19.13	Topsoil Placement and Grading	6
32 92 19.13	Mechanical Seeding	5

Interim Protocol Access Guidelines for Stavely Research Ranch

For Research and Education Activities

Welcome to the Stavely Research Ranch

Stavely Research Ranch (Stavely) has been the proud home of native prairie/rangeland research since 1949. You are a welcome guest to Stavely but access to Stavely lands is a privilege and your cooperation and adherence to these guidelines is necessary to protect the integrity of rangelands and the safety of all users.

Once you have thoroughly reviewed these guidelines, please complete and sign the declaration and complete the checklist and return both to the Environment and Sustainable Resource Development (ESRD) Rangeland Agrologist by email or fax (see Key Contacts).

Stavely Operations:

Stavely is designated as a research ranch and is managed for rangeland research, local livestock grazing, and grassland biodiversity conservation. Management of Stavely is guided by a long term management plan under the supervision of an Advisory Committee authorized by ESRD. Livestock grazing at Stavely is authorized under the jurisdiction of ESRD through a long term grazing agreement with the Stavely Research Ranch Manager (Ranch Manager). The Ranch Manager is responsible for the stewardship of grazing management on the site.

Approval to Access Stavely Rangelands:

You will need to apply for and obtain a Temporary Field Authority (TFA) from the ESRD Rangeland Agrologist to conduct research or education activities at Stavely. For the coming field season, you will need to apply for your TFA prior to May 15 to obtain approval.

Once you have written authorization for your research project from ESRD and have received a TFA from the ESRD Rangeland Agrologist, you must bring these documents with you and must contact the Ranch Manager before gaining access onto Stavely.

Key Contacts:

- **ESRD Rangeland Agrologist:** representative from ESRD Rangelands from the Calgary Office with overall responsibility for Stavely.
- **Stavely Ranch Manager**

Before You Enter Stavely - Initial Contact:

You are requested to make early contact with the Ranch Manager well before entering Stavely, no later than one week prior to your visit.

You are also required to email or fax your completed declaration form and checklist to the ESRD Rangeland Agrologist.

General:

Carry a copy of your authorization for research or education activities from ESRD and the TFA with you at all times while at Stavely.

The authorization is only to carry out of research or education, or both, and nothing else.

Communication is the key. The Ranch Manager should be contacted for assistance, or advice.

Leave gates as you find them (i.e. if open, leave them open; if closed, close them after passage through).

Report any suspicious activity to the Ranch Manager.

All visitors are responsible for their own safety and working alone practices while on Stavely.

Report any issues you may have had to the Agrologist in charge.

No overnight camping is permitted, don't litter and carry out all garbage.

Road, Trail and Foot Access:

- **Vehicular access** to all ranch land is restricted to existing roads and trails. Exceptions for other vehicular access must be made in writing and requested from the ESRD Site Manager.
-
- **Gravel Roads and Trails:** Authorized access by truck is restricted to gravel roads and trails as identified on the Stavely access map
- **Pasture Trails:** Authorized access on existing pasture trails (two track or two track gravel) may be accessed by off highway vehicle with OHV-quad or side by side appropriate safety provisions (see Fire Safety, Weeds and Invasive Species
- **Off Trail Access:** Foot Access only - access off of existing roads or trails must be by foot access.

Livestock Grazing:

As a general guideline, access will not be permitted to pasture units with livestock unless a request is made and written permission has been obtained from the Stavely Ranch Manager. Consult with the Stavely Ranch Manager to address access needs.

Fire Safety:

The ESRD Rangeland Agrologist reserves the right to restrict all vehicles during periods of high fire risk. No smoking or open fires are permitted anywhere on the ranch; smoking is restricted to paved and graveled areas immediately adjacent to facilities.

For trucks:

Exhaust manifolds and catalytic converters may have very high operating temperatures even under normal operation and present a fire hazard on rangeland. For this reason, truck access is limited to gravel roads and trails where dry vegetation will not come into contact with the vehicle components.

For quads and other off highway vehicles (ATVs & OHVs):

ATV/OHV exhaust systems also reach temperatures that can ignite vegetation. Dry vegetation may build up under the seat, wheel wells, engine and manifold, exhaust and muffler systems. Once ignited smoldering debris can then fall from the OHV and start a wildfire.

- Before you ride inspect your off highway vehicle and clear out any debris that has built up on the vehicle prior to entering the Stavely Research Ranch.
- After riding through vegetation areas stop and remove any debris.
- Ensure the muffler and spark arresters on your OHV are in good working condition. Any alterations to the factory components of an OHV can greatly increase the chance of starting a wildfire.

Fire Suppression:

- All users of Stavely rangeland must have basic firefighting tools with them while accessing roads and trails with vehicles.
- Required tools include:
 - o a fire broom or shovel
 - o a Wajax water pack with sufficient water for suppression at a fire ignition point;
 - o fencing pliers for cutting barbed wire fences in the event of a fire emergency to facilitate escape,
 - o a portable truck fire extinguisher.
- If you observe a fire on Stavely take prompt action:
 - o If you have appropriate equipment and know how, attempt to extinguish the fire if it is small and manageable.
 - o Report the fire by dialing 911. This will put you in contact with the Fire Marshall from the Municipal District of Willow Creek.
 - o Also, contact the Ranch Manager and ESRD Rangeland Agrologist (contacts above)
 - o While ensuring safety of personnel, be prepared to assist fire fighters to locate the fire and follow instructions from the Fire Marshall.

Weeds and Invasive Species:

Given the prior stewardship of these lands by Agriculture Canada, the Stavely rangelands are relatively free of weeds and invasive species (with the exception of Canada Thistle). The ESRD Rangeland Agrologist and Ranch Managers will be working to maintain this weed free condition.

Off road vehicle use increases the risk of spreading invasive plants because greater numbers of seed are picked up off road and off trail.

- All off highway vehicles require pressure washing prior to entry onto Stavely to remove soil and any residual plant materials so that weeds are not introduced on access roads and trails. Wash vehicles by focusing on the problem areas, such as wheels, wheel wells, drive train, and bumpers, is an effective solution for removing seeds from vehicles preventing their transmission to other areas.

Research Sites/Plots/Locations:

Use wooden or plastic rather than metal markers to demarcate study locations and plots. Use of metal pegs will only be granted under exceptional circumstances. Where metal markers are required, they MUST be removed from the ground when the research for the season ends.

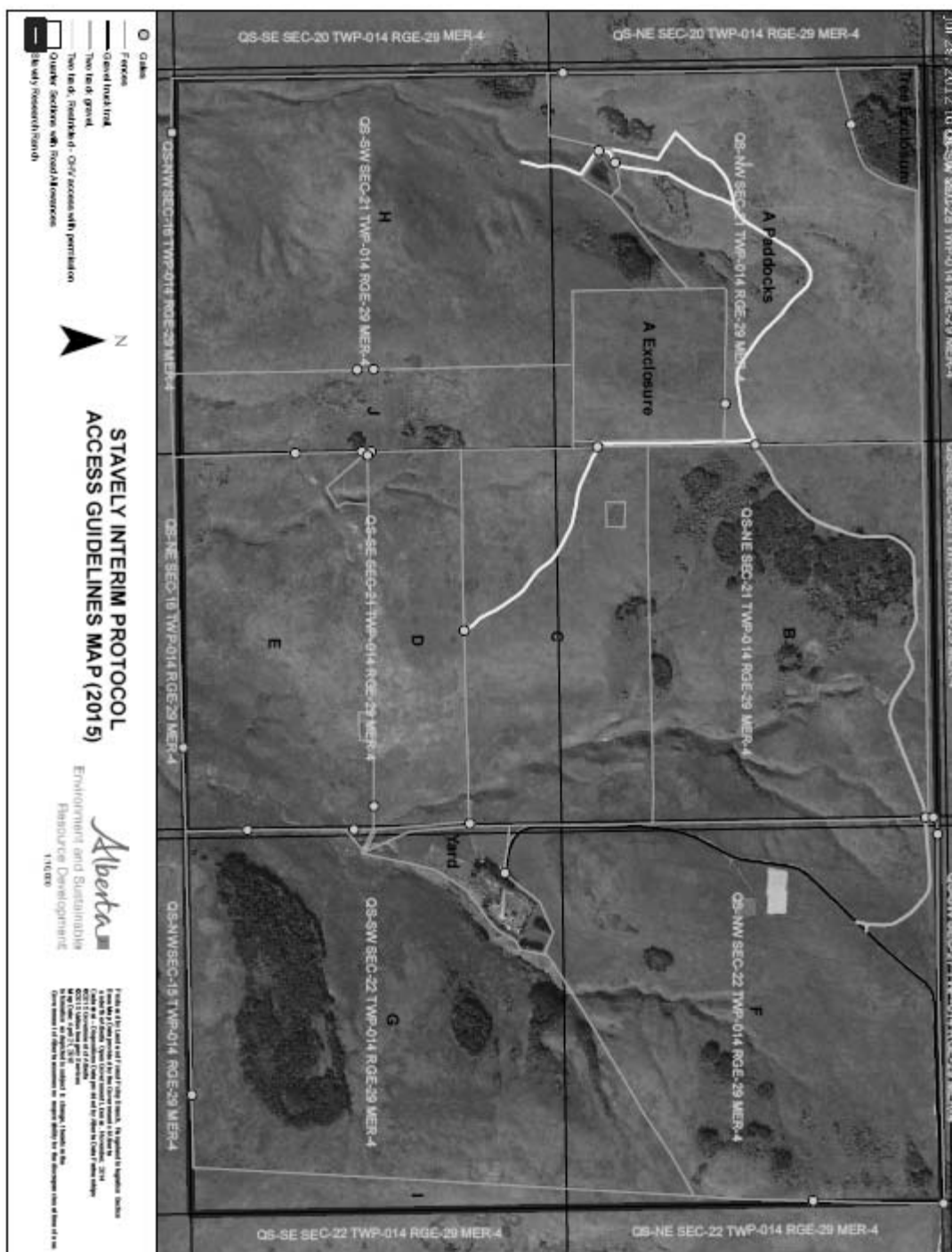
With the exception of research infrastructure (e.g. agronomy cages, electronic monitoring apparatus), everything packed into the field should be removed, including all garbage.

Do not touch field equipment associated with other research projects. Follow all posted signs, including where entry may be restricted.

Responsibility for Damages to Property and Range Resources

Note that any person visiting Stavely will be held responsible for bodily injury, personal injury and property damage caused by the research/collection/education or associated activities.

Prior to entering Stavely, all persons are required to provide proof of insurance to ESRD that insures for damage to real and personal property and for any vehicle operated at Stavely in an amount satisfactory to ESRD.



Interim Protocol Access Management Guidelines for Stavely Research Ranch

Research and Environmental Monitoring Activities

Access Declaration

I have reviewed and accept the conditions for access to the Stavely Research Ranch Rangelands as set out in the Interim Protocol Access Management Guidelines for Stavely Research Ranch For Research and Education Activities dated December 2015 (one declaration can be completed for a group):

Name: _____

TFA No. _____ (Temporary Field Authority Number from ESRD)

Project: _____

Institution or Affiliation: _____

Address: _____

Phone: _____

Email: _____

Signature: _____

Date: _____

Time: _____

What will be the results of your work at Stavely:

Other permits required:

Email or fax your completed declaration to the ESRD Rangeland Agrologist:

STAVELY RESEARCH RANCH

CHECKLIST FOR RESEARCH AND EDUCATION ACTIVITIES

KEY INFORMATION TO REVIEW AND UNDERSTAND BEFORE VISITING STAVELY

- ☐ I have contacted ESRD in Calgary and obtained a Temporary Field Authority (TFA) to authorize my visit to Stavely.
- ☐ I have reviewed the Guidelines for Access attached.
- ☐ I have recorded the name and contact information for the Stavely Ranch Manager
- ☐ I have or will contact the Stavely Ranch Manager no later than one week prior to my visit to Stavely.
- ☐ I will avoid pastures with locked gates and/or livestock unless special written permission has been obtained.
- ☐ I have the required fires safety gear.
- ☐ All dry vegetation has been removed from vehicles and ATVs/OHVs.
- ☐ ATVs/OHVs have been pressure washed to remove possible weed seeds.
- ☐ I have noted the contacted the required contact phone numbers in the event of a fire.
- ☐ I have general insurance coverage in the amount of \$2,000,000 and have provided poof of it to ESRD,