



TABLE OF CONTENTS

PART 1 - GENERAL INFORMATION.....	3
1.1 INTRODUCTION	3
1.2 SUMMARY	3
1.3 DEBRIEFINGS	4
PART 2 - OFFEROR INSTRUCTIONS	4
2.1 STANDARD INSTRUCTIONS, CLAUSES AND CONDITIONS.....	4
2.2 SUBMISSION OF OFFERS.....	4
2.3 ENQUIRIES - REQUEST FOR STANDING OFFERS.....	4
2.4 APPLICABLE LAWS.....	5
PART 3 - OFFER PREPARATION INSTRUCTIONS	5
3.1. OFFER PREPARATION INSTRUCTIONS	5
PART 4 - EVALUATION PROCEDURES AND BASIS OF SELECTION.....	6
4.1 EVALUATION PROCEDURES	6
4.2 BASIS OF SELECTION	8
PART 5 – CERTIFICATIONS AND ADDITIONAL INFORMATION	9
5.1 CERTIFICATIONS REQUIRED WITH THE OFFER	9
5.2 CERTIFICATIONS PRECEDENT TO THE ISSUANCE OF A STANDING OFFER AND ADDITIONAL INFORMATION.....	9
PART 6 - STANDING OFFER AND RESULTING CONTRACT CLAUSES.....	10
A. STANDING OFFER.....	10
6.1 OFFER	10
6.2 SECURITY REQUIREMENTS	10
6.3 STANDARD CLAUSES AND CONDITIONS	10
6.4 TERM OF STANDING OFFER	11
6.5 AUTHORITIES	11
6.6 IDENTIFIED USERS.....	12
6.7 CALL-UP INSTRUMENT	12
6.8 LIMITATION OF CALL-UPS.....	12
6.9 PRIORITY OF DOCUMENTS	12
6.10 CERTIFICATIONS	12
6.11 APPLICABLE LAWS.....	13
B. RESULTING CONTRACT CLAUSES	13
6.1 REQUIREMENT	13
6.2 STANDARD CLAUSES AND CONDITIONS	13
6.3 TERM OF CONTRACT.....	13
6.4 PAYMENT.....	13
6.5 INVOICING INSTRUCTIONS.....	14
6.6 SACC <i>MANUAL</i> CLAUSES.....	14
ANNEX "A"	15
REQUIREMENT	15
ANNEX "B"	16

Solicitation No. - N° de l'invitation
21C11-151003/A
Client Ref. No. - N° de réf. du client
21C11-151003

Amd. No. - N° de la modif.
File No. - N° du dossier
CAL-5-38009

Buyer ID - Id de l'acheteur
ca1125
CCC No./N° CCC - FMS No./N° VME

BASIS OF PAYMENT.....	16
ANNEX "C"	36
DELIVERY DESTINATIONS AND AUTHORIZED SITE AUTHORITIES.....	36
ANNEX "D "	37
DRAWINGS	37
ANNEX "E"	38
STANDING OFFER USAGE REPORT	38

PART 1 - GENERAL INFORMATION

1.1 Introduction

The Request for Standing Offers (RFSO) is divided into six parts plus attachments and annexes, as follows:

- | | |
|--------|---|
| Part 1 | General Information: provides a general description of the requirement; |
| Part 2 | Offeror Instructions: provides the instructions applicable to the clauses and conditions of the RFSO; |
| Part 3 | Offer Preparation Instructions: provides Offerors with instructions on how to prepare their offer to address the evaluation criteria specified; |
| Part 4 | Evaluation Procedures and Basis of Selection: indicates how the evaluation will be conducted, the evaluation criteria which must be addressed in the offer, and the basis of selection; |
| Part 5 | Certifications: includes the certifications to be provided; |
| Part 6 | 6A, Standing Offer, and 6B, Resulting Contract Clauses:

6A, includes the Standing Offer containing the offer from the Offeror and the applicable clauses and conditions;

6B, includes the clauses and conditions which will apply to any contract resulting from a call-up made pursuant to the Standing Offer. |

The Annexes include the Requirement, the Basis of Payment, Delivery Destinations and Authorized Site Authorities, Drawings and Standing Offer Usage Report.

1.2 Summary

To supply Aluminium extrusions, in accordance with the Annex A – Requirement, Annex B – Basis of Payment, Annex C – Delivery Destinations and Authorized Site Authorities and Annex D – Drawings, for Correctional Services Canada, CORCAN, various locations across Canada, as and when requested, during the period of the Standing Offer from April 1, 2016 to March 31, 2017 inclusive.

If the Standing Offer is authorized for use beyond the initial period, the Offeror offers to extend its offer for four (4) additional twelve (12) month periods, from April 1, 2017 to March 31, 2018, from April 1, 2018 to March 31, 2019, from April 1, 2019 to March 31, 2020 and from April 1, 2020 to March 31, 2021 under the same conditions and at the rates or prices specified in the Standing Offer, or at the rates or prices calculated in accordance with the formula specified in the Standing Offer.

The requirement is subject to the provisions of the World Trade Organization Agreement on Government Procurement (WTO-AGP), the North American Free Trade Agreement (NAFTA), and the Agreement on Internal Trade (AIT)."

1.3 Debriefings

Offerors may request a debriefing on the results of the request for standing offers process. Offerors should make the request to the Standing Offer Authority within 15 working days of receipt of the results of the request for standing offers process. The debriefing may be in writing, by telephone or in person.

PART 2 - OFFEROR INSTRUCTIONS

2.1 Standard Instructions, Clauses and Conditions

All instructions, clauses and conditions identified in the Request for Standing Offers (RFSO) by number, date and title are set out in the *Standard Acquisition Clauses and Conditions Manual* (<https://buyandsell.gc.ca/policy-and-guidelines/standard-acquisition-clauses-and-conditions-manual>) issued by Public Works and Government Services Canada.

Offerors who submit an offer agree to be bound by the instructions, clauses and conditions of the RFSO and accept the clauses and conditions of the Standing Offer and resulting contract(s).

The 2006 (2015-07-03) Standard Instructions - Request for Standing Offers - Goods or Services - Competitive Requirements, are incorporated by reference into and form part of the RFSO.

Subsection 5.4 of 2006, Standard Instructions - Request for Standing Offers - Goods or Services - Competitive Requirements, is amended as follows:

Delete: 60 days
Insert: 120 days

2.1.1 SACC Manual Clauses

M0019T (2007-05-25) Firm Price and/or Rates
M1004T (2011-05-16) Condition of Material

2.2 Submission of Offers

Offers must be submitted only to Public Works and Government Services Canada (PWGSC) Bid Receiving Unit by the date, time and place indicated on page 1 of the Request for Standing Offers.

2.3 Enquiries - Request for Standing Offers

All enquiries must be submitted in writing to the Standing Offer Authority no later than fourteen (14) calendar days before the Request for Standing Offers (RFSO) closing date. Enquiries received after that time may not be answered.

Offerors should reference as accurately as possible the numbered item of the RFSO to which the enquiry relates. Care should be taken by Offerors to explain each question in sufficient detail in order to enable Canada to provide an accurate answer. Technical enquiries that are of a proprietary nature must be clearly marked "proprietary" at each relevant item. Items identified as "proprietary" will be treated as such except where Canada determines that the enquiry is not of a proprietary nature. Canada may edit the question(s) or may request that Offerors do so, so that the proprietary nature of the question(s) is eliminated, and the enquiry can be answered to all Offerors. Enquiries not submitted in a form that can be distributed to all Offerors may not be answered by Canada.

2.4 Applicable Laws

The Standing Offer and any contract resulting from the Standing Offer must be interpreted and governed, and the relations between the parties determined, by the laws in force in Alberta.

Offerors may, at their discretion, substitute the applicable laws of a Canadian province or territory of their choice without affecting the validity of their offer, by deleting the name of the Canadian province or territory specified and inserting the name of the Canadian province or territory of their choice. If no change is made, it acknowledges that the applicable laws specified are acceptable to the Offerors.

PART 3 - OFFER PREPARATION INSTRUCTIONS

3.1. Offer Preparation Instructions

Canada requests that offerors provide their offer in separately bound sections as follows:

Section I: Technical Offer (1 hard copy)
Section II: Financial Offer (1 hard copy)
Section III: Certifications (1 hard copy)

Prices must appear in the financial offer only. No prices must be indicated in any other section of the offer.

Canada requests that Offerors follow the format instructions described below in the preparation of their offer.

- (a) use 8.5 x 11 inch (216 mm x 279 mm) paper;
- (b) use a numbering system that corresponds to that of the Request for Standing Offers.

In April 2006, Canada issued a policy directing federal departments and agencies to take the necessary steps to incorporate environmental considerations into the procurement process [Policy on Green Procurement](http://www.tpsgc-pwgsc.gc.ca/ecologisation-greening/achats-procurement/politique-policy-eng.html) (<http://www.tpsgc-pwgsc.gc.ca/ecologisation-greening/achats-procurement/politique-policy-eng.html>). To assist Canada in reaching its objectives, Offerors should:

- 1) use 8.5 x 11 inch (216 mm x 279 mm) paper containing fibre certified as originating from a sustainably-managed forest and containing minimum 30% recycled content; and
- 2) use an environmentally-preferable format including black and white printing instead of colour printing, printing double sided/duplex, using staples or clips instead of cerlox, duotangs or binders.

Section I: Technical Offer

In their technical offer, Offerors should explain and demonstrate how they propose to meet the requirements and how they will carry out the Work.

Section II: Financial Offer

Offerors must submit their financial offer in accordance with the Annex B, Basis of Payment. The total amount of Applicable Taxes must be shown separately.

3.1.1 Payment by Credit Card

Canada requests that Offerors complete one of the following:

- (a) ☐ Government of Canada Acquisition Cards (credit cards) will be accepted for payment of call-ups against the standing offer.

The following credit card(s) are accepted:

VISA _____
Master Card _____

- (b) ☐ Government of Canada Acquisition Cards (credit cards) will not be accepted for payment of call-ups against the standing offer.

The Offeror is not obligated to accept payment by credit card.

Acceptance of credit cards for payment of call-ups will not be considered as an evaluation criterion.

3.1.2 Exchange Rate Fluctuation

C3011T (2013-11-06), Exchange Rate Fluctuation

Section III: Certifications

Offerors must submit the certifications required under Part 5.

PART 4 - EVALUATION PROCEDURES AND BASIS OF SELECTION

4.1 Evaluation Procedures

- (a) Offers will be assessed in accordance with the entire requirement of the Request for Standing Offers including the technical and financial evaluation criteria.
- (b) An evaluation team composed of representatives of Canada will evaluate the offers.

4.1.1 Financial Evaluation

SACC Manual Clause M0222T (2013-04-25), Evaluation of Price

For each year, prices for items #1 to #14 from Annex "B" - Basis of Payment will be multiplied by its respective estimated quantities. The totals for each year will be added together to arrive at an Evaluated Price, as follows:

For period from April 1, 2016 to March 31, 2017

(Price for item #1a in Annex B x 5,250) + (Price for item #1b in Annex B x 1,500) + (Price for item #1c in Annex B x 750) + (Price for item #2a in Annex B x 5,250) + (Price for item #2b in Annex B x 1,500) + (Price for item #2c in Annex B x 750) + (Price for item #3a in Annex B x 2,625) + (Price for item #3b in Annex B x 750) + (Price for item #3c in Annex B x 375) + (Price for item #4a in Annex B x 34,650) + (Price for item #4b in Annex B x 9,900) + (Price for item #4c in Annex B x 4,950) + (Price for item #5a in Annex B x 29,925) + (Price for item #5b in Annex B x 8,550) + (Price for item #5c in Annex B x 4,275) + (Price for item #6a in Annex B x 65,625) + (Price for item #6b in Annex B x 18,750) + (Price for item #6c in Annex B x 9,375) + (Price for item #7a in Annex B x 5,250) + (Price for item #7b in Annex B x 1,500) + (Price for item #7c in Annex B x 750) + (Price for item #8a in Annex B x 2,625) + (Price for item #8b in Annex B x 750) + (Price for item #8c in Annex B x 375) + (Price for item #9a in Annex B x 2,625) + (Price for item #9b in Annex B x 750) + (Price for item #9c in Annex B x 375) + (Price for item #10a in Annex B x 13,125) + (Price for item #10b in Annex B x 3,750) + (Price for item #10c in Annex B x 1,875) + (Price for item #11a in Annex B x 5,250) + (Price for item #11b in Annex B x 1,500) + (Price for item #11c in Annex B x 750) + (Price for item #12a in Annex B x 1,838) + (Price for item #12b in Annex B x 525) + (Price for item #12c in Annex B x 262) + (Price for item #13a in Annex B x

1,838) + (Price for item #13b in Annex B x 525) + (Price for item #13c in Annex B x 262) + (Price for item #14a in Annex B x 3,413) + (Price for item #14b in Annex B x 975) + (Price for item #14c in Annex B x 487) = **(B1) Bid Price for Period from April 1, 2016 to March 31, 2017**

For option year 1 from April 1, 2017 to March 31, 2018

(Price for item #1a in Annex B x 5,250) + (Price for item #1b in Annex B x 1,500) + (Price for item #1c in Annex B x 750) + (Price for item #2a in Annex B x 5,250) + (Price for item #2b in Annex B x 1,500) + (Price for item #2c in Annex B x 750) + (Price for item #3a in Annex B x 2,625) + (Price for item #3b in Annex B x 750) + (Price for item #3c in Annex B x 375) + (Price for item #4a in Annex B x 34,650) + (Price for item #4b in Annex B x 9,900) + (Price for item #4c in Annex B x 4,950) + (Price for item #5a in Annex B x 29,925) + (Price for item #5b in Annex B x 8,550) + (Price for item #5c in Annex B x 4,275) + (Price for item #6a in Annex B x 65,625) + (Price for item #6b in Annex B x 18,750) + (Price for item #6c in Annex B x 9,375) + (Price for item #7a in Annex B x 5,250) + (Price for item #7b in Annex B x 1,500) + (Price for item #7c in Annex B x 750) + (Price for item #8a in Annex B x 2,625) + (Price for item #8b in Annex B x 750) + (Price for item #8c in Annex B x 375) + (Price for item #9a in Annex B x 2,625) + (Price for item #9b in Annex B x 750) + (Price for item #9c in Annex B x 375) + (Price for item #10a in Annex B x 13,125) + (Price for item #10b in Annex B x 3,750) + (Price for item #10c in Annex B x 1,875) + (Price for item #11a in Annex B x 5,250) + (Price for item #11b in Annex B x 1,500) + (Price for item #11c in Annex B x 750) + (Price for item #12a in Annex B x 1,838) + (Price for item #12b in Annex B x 525) + (Price for item #12c in Annex B x 262) + (Price for item #13a in Annex B x 1,838) + (Price for item #13b in Annex B x 525) + (Price for item #13c in Annex B x 262) + (Price for item #14a in Annex B x 3,413) + (Price for item #14b in Annex B x 975) + (Price for item #14c in Annex B x 487) = **(B2) Bid Price for option year 1**

For option year 2 from April 1, 2018 to March 31, 2019

(Price for item #1a in Annex B x 5,250) + (Price for item #1b in Annex B x 1,500) + (Price for item #1c in Annex B x 750) + (Price for item #2a in Annex B x 5,250) + (Price for item #2b in Annex B x 1,500) + (Price for item #2c in Annex B x 750) + (Price for item #3a in Annex B x 2,625) + (Price for item #3b in Annex B x 750) + (Price for item #3c in Annex B x 375) + (Price for item #4a in Annex B x 34,650) + (Price for item #4b in Annex B x 9,900) + (Price for item #4c in Annex B x 4,950) + (Price for item #5a in Annex B x 29,925) + (Price for item #5b in Annex B x 8,550) + (Price for item #5c in Annex B x 4,275) + (Price for item #6a in Annex B x 65,625) + (Price for item #6b in Annex B x 18,750) + (Price for item #6c in Annex B x 9,375) + (Price for item #7a in Annex B x 5,250) + (Price for item #7b in Annex B x 1,500) + (Price for item #7c in Annex B x 750) + (Price for item #8a in Annex B x 2,625) + (Price for item #8b in Annex B x 750) + (Price for item #8c in Annex B x 375) + (Price for item #9a in Annex B x 2,625) + (Price for item #9b in Annex B x 750) + (Price for item #9c in Annex B x 375) + (Price for item #10a in Annex B x 13,125) + (Price for item #10b in Annex B x 3,750) + (Price for item #10c in Annex B x 1,875) + (Price for item #11a in Annex B x 5,250) + (Price for item #11b in Annex B x 1,500) + (Price for item #11c in Annex B x 750) + (Price for item #12a in Annex B x 1,838) + (Price for item #12b in Annex B x 525) + (Price for item #12c in Annex B x 262) + (Price for item #13a in Annex B x 1,838) + (Price for item #13b in Annex B x 525) + (Price for item #13c in Annex B x 262) + (Price for item #14a in Annex B x 3,413) + (Price for item #14b in Annex B x 975) + (Price for item #14c in Annex B x 487) = **(B3) Bid Price for option year 2**

For option year 3 from April 1, 2019 to March 31, 2020

(Price for item #1a in Annex B x 5,250) + (Price for item #1b in Annex B x 1,500) + (Price for item #1c in Annex B x 750) + (Price for item #2a in Annex B x 5,250) + (Price for item #2b in Annex B x 1,500) + (Price for item #2c in Annex B x 750) + (Price for item #3a in Annex B x 2,625) + (Price for item #3b in Annex B x 750) + (Price for item #3c in Annex B x 375) + (Price for item #4a in Annex B x 34,650) + (Price for item #4b in Annex B x 9,900) + (Price for item #4c in Annex B x 4,950) + (Price for item #5a in Annex B x 29,925) + (Price for item #5b in Annex B x 8,550) + (Price for item #5c in Annex B x 4,275) + (Price for item #6a in Annex B x 65,625) + (Price for item #6b in Annex B x 18,750) + (Price for item #6c in Annex B x 9,375) + (Price for item #7a in

Annex B x 5,250) + (Price for item #7b in Annex B x 1,500) + (Price for item #7c in Annex B x 750) + (Price for item #8a in Annex B x 2,625) + (Price for item #8b in Annex B x 750) + (Price for item #8c in Annex B x 375) + (Price for item #9a in Annex B x 2,625) + (Price for item #9b in Annex B x 750) + (Price for item #9c in Annex B x 375) + (Price for item #10a in Annex B x 13,125) + (Price for item #10b in Annex B x 3,750) + (Price for item #10c in Annex B x 1,875) + (Price for item #11a in Annex B x 5,250) + (Price for item #11b in Annex B x 1,500) + (Price for item #11c in Annex B x 750) + (Price for item #12a in Annex B x 1,838) + (Price for item #12b in Annex B x 525) + (Price for item #12c in Annex B x 262) + (Price for item #13a in Annex B x 1,838) + (Price for item #13b in Annex B x 525) + (Price for item #13c in Annex B x 262) + (Price for item #14a in Annex B x 3,413) + (Price for item #14b in Annex B x 975) + (Price for item #14c in Annex B x 487) = **(B4) Bid Price for option year 3**

For option year 4 from April 1, 2020 to March 31, 2021

(Price for item #1a in Annex B x 5,250) + (Price for item #1b in Annex B x 1,500) + (Price for item #1c in Annex B x 750) + (Price for item #2a in Annex B x 5,250) + (Price for item #2b in Annex B x 1,500) + (Price for item #2c in Annex B x 750) + (Price for item #3a in Annex B x 2,625) + (Price for item #3b in Annex B x 750) + (Price for item #3c in Annex B x 375) + (Price for item #4a in Annex B x 34,650) + (Price for item #4b in Annex B x 9,900) + (Price for item #4c in Annex B x 4,950) + (Price for item #5a in Annex B x 29,925) + (Price for item #5b in Annex B x 8,550) + (Price for item #5c in Annex B x 4,275) + (Price for item #6a in Annex B x 65,625) + (Price for item #6b in Annex B x 18,750) + (Price for item #6c in Annex B x 9,375) + (Price for item #7a in Annex B x 5,250) + (Price for item #7b in Annex B x 1,500) + (Price for item #7c in Annex B x 750) + (Price for item #8a in Annex B x 2,625) + (Price for item #8b in Annex B x 750) + (Price for item #8c in Annex B x 375) + (Price for item #9a in Annex B x 2,625) + (Price for item #9b in Annex B x 750) + (Price for item #9c in Annex B x 375) + (Price for item #10a in Annex B x 13,125) + (Price for item #10b in Annex B x 3,750) + (Price for item #10c in Annex B x 1,875) + (Price for item #11a in Annex B x 5,250) + (Price for item #11b in Annex B x 1,500) + (Price for item #11c in Annex B x 750) + (Price for item #12a in Annex B x 1,838) + (Price for item #12b in Annex B x 525) + (Price for item #12c in Annex B x 262) + (Price for item #13a in Annex B x 1,838) + (Price for item #13b in Annex B x 525) + (Price for item #13c in Annex B x 262) + (Price for item #14a in Annex B x 3,413) + (Price for item #14b in Annex B x 975) + (Price for item #14c in Annex B x 487) = **(B5) Bid Price for option year 4**

(B1) + (B2) + (B3) + (B4) + (B5) = Total Bid Price (B)

The Bidder's London Metal Exchange (LME) Aluminum Ingot Cash Buyer Price at time of the bid **(A)** submitted by all bidders in Annex "B" - Basis of Payment will be averaged to arrive at an Average Ingot Price **(C)**

The **Evaluated Price (E)** will be calculated as follow:

[Average Ingot Price (C) – Ingot Price submitted (A)] / Average Ingot Price (C) = **(D)** increase/decrease percentage.

[Total Bid Price (B) + (Total Bid Price (B) x increase/decrease percentage (D))] = **(E) Evaluated Price**

4.2 Basis of Selection

- 4.2.1** An offer must comply with the requirements of the Request for Standing Offers to be declared responsive. The responsive offer with the lowest evaluated price (E) will be recommended for issuance of a standing offer.

PART 5 – CERTIFICATIONS AND ADDITIONAL INFORMATION

Offerors must provide the required certifications and additional information to be issued a standing offer.

The certifications provided by Offerors to Canada are subject to verification by Canada at all times. Canada will declare an offer non-responsive, will have the right to set-aside a standing offer, or will declare a contractor in default if any certification made by the Offeror is found to be untrue whether made knowingly or unknowingly during the offer evaluation period, during the Standing Offer period, or during the contract period.

The Standing Offer Authority will have the right to ask for additional information to verify the Offeror's certifications. Failure to comply and to cooperate with any request or requirement imposed by the Standing Offer Authority will render the offer non-responsive, result in the setting aside of the Standing Offer or constitute a default under the Contract.

5.1 Certifications Required with the Offer

Offerors must submit the following duly completed certifications as part of their offer.

5.1.1 Declaration of Convicted Offences

As applicable, pursuant to subsection Declaration of Convicted Offences of section 01 of the Standard Instructions, the Offeror must provide with its offer, a completed [Declaration Form](http://www.tpsgc-pwgsc.gc.ca/ci-if/formulaire-form-eng.html) (<http://www.tpsgc-pwgsc.gc.ca/ci-if/formulaire-form-eng.html>), to be given further consideration in the procurement process.

5.2 Certifications Precedent to the Issuance of a Standing Offer and Additional Information

The certifications and additional information listed below should be submitted with the offer, but may be submitted afterwards. If any of these required certifications or additional information is not completed and submitted as requested, the Standing Offer Authority will inform the Offeror of a time frame within which to provide the information. Failure to provide the certifications or the additional information listed below within the time frame provided will render the offer non-responsive.

5.2.1 Integrity Provisions – List of Names

Offerors who are incorporated, including those submitting offers as a joint venture, must provide a complete list of names of all individuals who are currently directors of the Offeror.

Offerors submitting offers as sole proprietorship, as well as those submitting offers as a joint venture, must provide the name of the owner(s).

Offerors submitting offers as societies, firms or partnerships do not need to provide lists of names.

5.2.2 Federal Contractors Program for Employment Equity - Standing Offer Certification

By submitting an offer, the Offeror certifies that the Offeror, and any of the Offeror's members if the Offeror is a Joint Venture, is not named on the Federal Contractors Program (FCP) for employment equity "FCP Limited Eligibility to Bid" list (http://www.labour.gc.ca/eng/standards_equity/eq/emp/fcp/list/inelig.shtml) available from [Employment and Social Development Canada-Labour's](http://www.labour.gc.ca/eng/standards_equity/eq/emp/fcp/list/inelig.shtml) website.

Canada will have the right to declare an offer non-responsive, or to set-aside a Standing Offer, if the Offeror, or any member of the Offeror if the Offeror is a Joint Venture, appears on the "FCP Limited Eligibility to Bid" list at the time of issuing of a Standing Offer or during the period of the Standing Offer.

PART 6 - STANDING OFFER AND RESULTING CONTRACT CLAUSES

A. STANDING OFFER

6.1 Offer

6.1.1 The Offeror offers to fulfill the requirement in accordance with the Requirement at Annex "A".

6.2 Security Requirements

6.2.1 There is no security requirement applicable to this Standing Offer.

6.3 Standard Clauses and Conditions

All clauses and conditions identified in the Standing Offer and resulting contract(s) by number, date and title are set out in the Standard Acquisition Clauses and Conditions Manual (<https://buyandsell.gc.ca/policy-and-guidelines/standard-acquisition-clauses-and-conditions-manual>) issued by Public Works and Government Services Canada.

6.3.1 General Conditions

2005 (2015-09-03) General Conditions - Standing Offers - Goods or Services, apply to and form part of the Standing Offer.

6.3.2 Standing Offers Reporting

The Offeror must compile and maintain records on its provision of goods, services or both to the federal government under contracts resulting from the Standing Offer. This data must include all purchases, including those paid for by a Government of Canada Acquisition Card.

The Offeror must provide this data in accordance with the reporting requirements detailed in Annex "E". If some data is not available, the reason must be indicated. If no goods or services are provided during a given period, the Offeror must still provide a "nil" report.

The data must be submitted on a quarterly basis to the Standing Offer Authority.

The quarterly reporting periods are defined as follows:

- 1st quarter: April 1 to June 30;
- 2nd quarter: July 1 to September 30;
- 3rd quarter: October 1 to December 31;
- 4th quarter: January 1 to March 31.

The data must be submitted to the Standing Offer Authority no later than fifteen (15) calendar days after the end of the reporting period.

6.4 Term of Standing Offer

6.4.1 Period of the Standing Offer

The period for making call-ups against the Standing Offer is from April 1, 2016 to March 31, 2017.

6.4.2 Extension of Standing Offer

If the Standing Offer is authorized for use beyond the initial period, the Offeror offers to extend its offer for four (4) additional twelve (12) month periods, from April 1, 2017 to March 31, 2018, from April 1, 2018 to March 31, 2019, from April 1, 2019 to March 31, 2020 and from April 1, 2020 to March 31, 2021 under the same conditions and at the rates or prices specified in the Standing Offer, or at the rates or prices calculated in accordance with the formula specified in the Standing Offer.

The Offeror will be advised of the decision to authorize the use of the Standing Offer for an extended period by the Standing Offer Authority 14 days before the expiry date of the Standing Offer. A revision to the Standing Offer will be issued by the Standing Offer Authority.

6.5 Authorities

6.5.1 Standing Offer Authority

The Standing Offer Authority is:

Linda Chan
Supply Officer
Public Works and Government Services Canada
Acquisitions Branch, Western Region
1650, 635 – 8 Ave SW
Calgary, AB T2P 3M3

Telephone: 403-389-1590
Facsimile: 403-292-5786
E-mail address: linda.chan@pwgsc-tpsgc.gc.ca

The Standing Offer Authority is responsible for the establishment of the Standing Offer, its administration and its revision, if applicable. Upon the making of a call-up, as Contracting Authority, he is responsible for any contractual issues relating to individual call-ups made against the Standing Offer by any Identified User.

6.5.2 Project Authority

The Project Authority for the Standing Offer is identified in the call-up against the Standing Offer.

The Project Authority is the representative of the department or agency for whom the Work will be carried out pursuant to a call-up against the Standing Offer and is responsible for all the technical content of the Work under the resulting Contract.

Solicitation No. - N° de l'invitation
21C11-151003/A
Client Ref. No. - N° de réf. du client
21C11-151003

Amd. No. - N° de la modif.
File No. - N° du dossier
CAL-5-38009

Buyer ID - Id de l'acheteur
cal125
CCC No./N° CCC - FMS No./N° VME

6.5.3 Offeror's Representative

Name: _____
Title: _____
Organization: _____
Address: _____

Telephone : _____
Facsimile: _____
E-mail address: _____

6.6 Identified Users

The Identified User authorized to make call-ups against the Standing Offer is: Correctional Services Canada, CORCAN, various locations across Canada as detailed in Annex C – Delivery Destinations and Authorized Site Authorities.

6.7 Call-up Instrument

The Work will be authorized or confirmed by the Identified User(s) using form PWGSC-TPSGC 942, Call-up Against a Standing Offer.

6.8 Limitation of Call-ups

Individual call-ups against the Standing Offer must not exceed \$400,000.00 (Applicable Taxes included).

6.9 Priority of Documents

If there is a discrepancy between the wording of any documents that appear on the list, the wording of the document that first appears on the list has priority over the wording of any document that subsequently appears on the list.

- a) the call up against the Standing Offer, including any annexes;
- b) the articles of the Standing Offer;
- c) the general conditions 2005 (2015-09-03), General Conditions - Standing Offers - Goods or Services;
- d) the general conditions 2010A (2015-09-03), General Conditions – Goods (Medium Complexity);
- e) Annex A, Requirement;
- f) Annex D, Drawings;
- g) Annex B, Basis of Payment;
- h) Annex C, Delivery Destinations and Authorized Site Authorities;
- i) Annex E, Standing Offer Usage Report;
- j) the Offeror's offer dated _____.

6.10 Certifications

6.10.1 Compliance

The continuous compliance with the certifications provided by the Offeror with its offer and the ongoing cooperation in providing additional information are conditions of issuance of the Standing Offer (SO). Certifications are subject to verification by Canada during the entire period of the SO and of any resulting contract that would continue beyond the period of the SO. If the Offeror does not comply with any certification, fails to provide the additional information, or if it is determined that any certification made by the Offeror in its offer is untrue, whether made knowingly or unknowingly, Canada has the right to terminate any resulting contract for default and set aside the Standing Offer.

6.11 Applicable Laws

The Standing Offer and any contract resulting from the Standing Offer must be interpreted and governed, and the relations between the parties determined, by the laws in force in Alberta.

B. RESULTING CONTRACT CLAUSES

The following clauses and conditions apply to and form part of any contract resulting from a call-up against the Standing Offer.

6.1 Requirement

The Contractor must provide the items detailed in the call-up against the Standing Offer.

6.2 Standard Clauses and Conditions

6.2.1 General Conditions

2010A (2015-09-03), General Conditions - Goods (Medium Complexity) apply to and form part of the Contract.

Section 16 Interest on Overdue Accounts, of 2010A (2015-09-03), General Conditions – Goods (Medium Complexity) will not apply to payments made by credit cards.

6.3 Term of Contract

6.3.1 Delivery Date

Delivery must be completed in accordance with the call-up against the Standing Offer.

6.4 Payment

6.4.1 Basis of Payment

See Annex B.

6.4.2 Limitation of Price

SACC Manual clause C6000C (2011-05-16) Limitation of Price

6.4.3 Single Payment

SACC Manual clause H1000C (2008-05-12) Single Payment

6.4.4 *SACC Manual* Clauses

C2000C (2007-11-30) Taxes – Foreign-based Contractor

6.4.5 Payment by Credit Card

The following credit card is accepted: _____.

OR

The following credit cards are accepted: _____ and _____.

Solicitation No. - N° de l'invitation
21C11-151003/A
Client Ref. No. - N° de réf. du client
21C11-151003

Amd. No. - N° de la modif.
File No. - N° du dossier
CAL-5-38009

Buyer ID - Id de l'acheteur
ca1125
CCC No./N° CCC - FMS No./N° VME

6.5 Invoicing Instructions

The Contract must submit invoices in accordance with the section entitled "Invoice Submission" of the general conditions. Invoices cannot be submitted until all work identified in the invoice is completed.

6.6 *SACC Manual Clauses*

A9068C (2010-01-11) Government Site Regulations
B7500C (2006-06-16) Excess Goods
C0604C (2010-01-11) Price Adjustment - Metals
G1005C (2008-05-12) Insurance

Solicitation No. - N° de l'invitation
21C11-151003/A
Client Ref. No. - N° de réf. du client
21C11-151003

Amd. No. - N° de la modif.
File No. - N° du dossier
CAL-5-38009

Buyer ID - Id de l'acheteur
cal125
CCC No./N° CCC - FMS No./N° VME

ANNEX "A"

REQUIREMENT

To supply aluminium extrusions in accordance with Annex "A" - Requirement, Annex "B" - Basis of Payment; Annex "C" - Delivery Destinations and Authorized Site Authorities and Annex "D" - Drawings for Correctional Service Canada (CSC), CORCAN, various locations across Canada

Security Requirement:

1. No security screening required, no access to sensitive information or assets. Contractor Personnel will be escorted in specific areas of the facility/site as and where required by CSC personnel or those authorized by CSC to do so on its behalf.
2. Contractor shall submit an "Institutional Access CPIC Clearance Request" (available after Standing Offer issue) form for each of its employees who will have to access the facility/site, such as delivery personnel. The form must be submitted to CSC Corcan Industries at least 72 hours prior to the delivery/visit of the site for clearance. CSC reserves the right to deny access to any facility/site part thereof of any Contractor personnel, at any time.

Delivery:

It is mandatory that delivery be completed within twenty (20) working days from receipt of call-up document unless an alternate timeframe has been approved by the identified user.

Solicitation No. - N° de l'invitation
21C11-151003/A
Client Ref. No. - N° de réf. du client
21C11-151003

Amd. No. - N° de la modif.
File No. - N° du dossier
CAL-5-38009

Buyer ID - Id de l'acheteur
cal125
CCC No./N° CCC - FMS No./N° VME

ANNEX "B"

BASIS OF PAYMENT

(All prices are Goods and Services Tax or the Harmonized Sales Tax excluded, FOB destination)

Quantities are estimated and are for evaluation purposes only and will not form part any resultant Standing Offer.

Bidder's London Metal Exchange (LME) Aluminum Ingot Cash Buyer Price at time of the bid **(A)**:

****Bidder to fill in**** US\$_____/Tonne Date: _____

For the period from April 1, 2016 to March 31, 2017

Description	Matrices #	Estimated Quantity in Metres (m)	Price**** Per Metre (m)
1. Handle aluminum	MD-18269		
a) FOB Cowansville Institution		5,250	\$_____/m
b) FOB Dorchester Institution		1,500	\$_____/m
c) All other Locations, FOB Plant		750	\$_____/m
2. Support aluminum	MD-18268		
a) FOB Cowansville Institution		5,250	\$_____/m
b) FOB Dorchester Institution		1,500	\$_____/m
c) All other Locations, FOB Plant		750	\$_____/m
3. Support screen extrusion aluminum	MD-18267		
a) FOB Cowansville Institution		2,625	\$_____/m
b) FOB Dorchester Institution		750	\$_____/m
c) All other Locations, FOB Plant		375	\$_____/m

Solicitation No. - N° de l'invitation
21C11-151003/A
Client Ref. No. - N° de réf. du client
21C11-151003

Amd. No. - N° de la modif.
File No. - N° du dossier
CAL-5-38009

Buyer ID - Id de l'acheteur
ca1125
CCC No./N° CCC - FMS No./N° VME

4. Panel aluminum frame	MD-21497	
a) FOB Cowansville Institution	34,650	\$_____/m
b) FOB Dorchester Institution	9,900	\$_____/m
c) All other Locations, FOB Plant	4,950	\$_____/m
5. Connector aluminum	MD-18257	
a) FOB Cowansville Institution	29,925	\$_____/m
b) FOB Dorchester Institution	8,550	\$_____/m
c) All other Locations, FOB Plant	4,275	\$_____/m
6. Beam aluminum	MD-18261	
a) FOB Cowansville Institution	65,625	\$_____/m
b) FOB Dorchester Institution	18,750	\$_____/m
c) All other Locations, FOB Plant	9,375	\$_____/m
7. Panel ass'y corner 90° aluminum	MD-18262	
a) FOB Cowansville Institution	5,250	\$_____/m
b) FOB Dorchester Institution	1,500	\$_____/m
c) All other Locations, FOB Plant	750	\$_____/m
8. Vertical radius connector aluminum	MD-18258	
a) FOB Cowansville Institution	2,625	\$_____/m
b) FOB Dorchester Institution	750	\$_____/m
c) All other Locations, FOB Plant	375	\$_____/m
9. 3 way flat connector aluminum	MD-18260	
a) FOB Cowansville Institution	2,625	\$_____/m
b) FOB Dorchester Institution	750	\$_____/m
c) All other Locations, FOB Plant	375	\$_____/m

Solicitation No. - N° de l'invitation
21C11-151003/A
Client Ref. No. - N° de réf. du client
21C11-151003

Amd. No. - N° de la modif.
File No. - N° du dossier
CAL-5-38009

Buyer ID - Id de l'acheteur
ca1125
CCC No./N° CCC - FMS No./N° VME

10. Moulding aluminum

MD-18266

a) FOB Cowansville Institution	13,125	\$_____/m
b) FOB Dorchester Institution	3,750	\$_____/m
c) All other Locations, FOB Plant	1,875	\$_____/m

11. Power pole aluminum

MD-18265

a) FOB Cowansville Institution	5,250	\$_____/m
b) FOB Dorchester Institution	1,500	\$_____/m
c) All other Locations, FOB Plant	750	\$_____/m

12. Panel ass'y corner 135° aluminum **MD-18264**

a) FOB Cowansville Institution	1,838	\$_____/m
b) FOB Dorchester Institution	525	\$_____/m
c) All other Locations, FOB Plant	262	\$_____/m

13. Panel ass'y corner 45° aluminum **MD-18263**

a) FOB Cowansville Institution	1838	\$_____/m
b) FOB Dorchester Institution	525	\$_____/m
c) All other Locations, FOB Plant	262	\$_____/m

14. 90° "L" vertical connector aluminum **MD-18259**

a) FOB Cowansville Institution	3,413	\$_____/m
b) FOB Dorchester Institution	975	\$_____/m
c) All other Locations, FOB Plant	487	\$_____/m

15. All other products (please provide a \$/kg fabrication and bar/ingot pricing)

a) FOB Cowansville Institution	\$_____/kg
b) FOB Dorchester Institution	\$_____/kg
c) All other Locations, FOB Plant	\$_____/kg

Note:

1) The minimum quantity ordered is 500 kg.

2) ***The price of aluminum ingot shall be adjusted for each month when the average price index for the calendar month previous to the date of call-up differs from the last ingot reference price by more than 3%.

The price adjustment shall be calculated in accordance with the sample calculation detailed below.

The price index shall be the Cash Buyer price on the London Metal Exchange (LME) Official Prices (US\$/tonne) - published daily by the LME and displayed on the LME website
<http://www.lme.com/aluminium.asp>

The average Price Index is calculated by adding up the daily Cash Buyer prices and dividing the sum by the number of daily prices in the calendar month.

The Contractor is responsible for establishing and supplying the price adjustment for each month and submit with proof of its calculations, to Public Works and Government Services Canada (PWGSC).

Sample Calculation:

NISO aluminum ingot price set-up: April: \$2345 (Reference price)

April LME Aluminum ingot average price: \$2345

May LME Aluminum ingot average price: \$2390: $(2390-2345)/2345$ - difference +1.9% - **No** change to reference price for June

June LME Aluminum ingot average price: \$2425: $(2425-2345)/2345$ - difference +3.4% - **New ingot price reference \$2425**

Each extrusion price will be increased by 3.4% for July

July LME Aluminum ingot average price: \$2420: $(2420-2425)/2425$ - difference -0.2% - **No** change - Extrusion prices remain as previous month (July prices)

August LME Aluminum ingot average price: \$2385: $(2385-2425)/2425$ - difference -1.44% - **No** change - Extrusion prices remain at the same price (July prices)

September LME Aluminum ingot average price: \$2350: $(2350-2425)/2425$ - difference -3.1% - **New ingot price reference \$2350**

Each extrusion price will be decreased by 3.1% for October

And so on

The LME Cash Buyer prices are in US dollars. The contractor can convert these prices to Canadian dollars by obtaining the average closing rate for the month published daily by the Bank of Canada and displayed on the Bank of Canada website at <http://www.bankofcanada.ca/en/rates/exchange-look.html>.

Option Year 1 : For the period from April 1, 2018 to March 31, 2019

Description	Matrices #	Estimated Quantity in Metres (m)	Price**** Per Metre (m)
1. Handle aluminum	MD-18269		
a) FOB Cowansville Institution		5,250	\$_____/m
b) FOB Dorchester Institution		1,500	\$_____/m
c) All other Locations, FOB Plant		750	\$_____/m
2. Support aluminum	MD-18268		
a) FOB Cowansville Institution		5,250	\$_____/m
b) FOB Dorchester Institution		1,500	\$_____/m
c) All other Locations, FOB Plant		750	\$_____/m
3. Support screen extrusion aluminum	MD-18267		
a) FOB Cowansville Institution		2,625	\$_____/m
b) FOB Dorchester Institution		750	\$_____/m
c) All other Locations, FOB Plant		375	\$_____/m
4. Panel aluminum frame	MD-21497		
a) FOB Cowansville Institution		34,650	\$_____/m
b) FOB Dorchester Institution		9,900	\$_____/m
c) All other Locations, FOB Plant		4,950	\$_____/m
5. Connector aluminum	MD-18257		
a) FOB Cowansville Institution		29,925	\$_____/m
b) FOB Dorchester Institution		8,550	\$_____/m
c) All other Locations, FOB Plant		4,275	\$_____/m

Solicitation No. - N° de l'invitation
21C11-151003/A
Client Ref. No. - N° de réf. du client
21C11-151003

Amd. No. - N° de la modif.
File No. - N° du dossier
CAL-5-38009

Buyer ID - Id de l'acheteur
ca1125
CCC No./N° CCC - FMS No./N° VME

6. Beam aluminum

MD-18261

a) FOB Cowansville Institution	65,625	\$_____/m
b) FOB Dorchester Institution	18,750	\$_____/m
c) All other Locations, FOB Plant	9,375	\$_____/m

7. Panel ass'y corner 90° aluminum

MD-18262

a) FOB Cowansville Institution	5,250	\$_____/m
b) FOB Dorchester Institution	1,500	\$_____/m
c) All other Locations, FOB Plant	750	\$_____/m

8. Vertical radius connector aluminum

MD-18258

a) FOB Cowansville Institution	2,625	\$_____/m
b) FOB Dorchester Institution	750	\$_____/m
c) All other Locations, FOB Plant	375	\$_____/m

9. 3 way flat connector aluminum

MD-18260

a) FOB Cowansville Institution	2,625	\$_____/m
b) FOB Dorchester Institution	750	\$_____/m
c) All other Locations, FOB Plant	375	\$_____/m

10. Moulding aluminum

MD-18266

a) FOB Cowansville Institution	13,125	\$_____/m
b) FOB Dorchester Institution	3,750	\$_____/m
c) All other Locations, FOB Plant	1,875	\$_____/m

11. Power pole aluminum

MD-18265

a) FOB Cowansville Institution	5,250	\$_____/m
b) FOB Dorchester Institution	1,500	\$_____/m
c) All other Locations, FOB Plant	750	\$_____/m

Solicitation No. - N° de l'invitation
21C11-151003/A
Client Ref. No. - N° de réf. du client
21C11-151003

Amd. No. - N° de la modif.
File No. - N° du dossier
CAL-5-38009

Buyer ID - Id de l'acheteur
cal125
CCC No./N° CCC - FMS No./N° VME

12. Panel ass'y corner 135° aluminum **MD-18264**

a) FOB Cowansville Institution	1,838	\$_____/m
b) FOB Dorchester Institution	525	\$_____/m
c) All other Locations, FOB Plant	262	\$_____/m

13. Panel ass'y corner 45° aluminum **MD-18263**

a) FOB Cowansville Institution	1838	\$_____/m
b) FOB Dorchester Institution	525	\$_____/m
c) All other Locations, FOB Plant	262	\$_____/m

14. 90° "L" vertical connector aluminum **MD-18259**

a) FOB Cowansville Institution	3,413	\$_____/m
b) FOB Dorchester Institution	975	\$_____/m
c) All other Locations, FOB Plant	487	\$_____/m

15. All other products (please provide a \$0.00/kg fabrication and bar/ingot pricing)

a) FOB Cowansville Institution	\$_____/kg
b) FOB Dorchester Institution	\$_____/kg
c) All other Locations, FOB Plant	\$_____/kg

Note:

1) The minimum quantity ordered is 500 kg.

2) ***The price of aluminum ingot shall be adjusted for each month when the average price index for the calendar month previous to the date of call-up differs from the last ingot reference price by more than 3%.

The price adjustment shall be calculated in accordance with the sample calculation detailed below.

The price index shall be the Cash Buyer price on the London Metal Exchange (LME) Official Prices (US\$/tonne) - published daily by the LME and displayed on the LME website
<http://www.lme.com/aluminium.asp>

The average Price Index is calculated by adding up the daily Cash Buyer prices and dividing the sum by the number of daily prices in the calendar month.

The Contractor is responsible for establishing and supplying the price adjustment for each month and submit with proof of its calculations, to Public Works and Government Services Canada (PWGSC).

Solicitation No. - N° de l'invitation
21C11-151003/A
Client Ref. No. - N° de réf. du client
21C11-151003

Amd. No. - N° de la modif.
File No. - N° du dossier
CAL-5-38009

Buyer ID - Id de l'acheteur
cal125
CCC No./N° CCC - FMS No./N° VME

Sample Calculation:

NISO aluminum ingot price set-up: April: \$2345 (Reference price)

April LME Aluminum ingot average price: \$2345

May LME Aluminum ingot average price: \$2390: $(2390-2345)/2345$ - difference +1.9% - **No** change to reference price for June

June LME Aluminum ingot average price: \$2425: $(2425-2345)/2345$ - difference +3.4% - **New ingot price reference \$2425**

Each extrusion price will be increased by 3.4% for July

July LME Aluminum ingot average price: \$2420: $(2420-2425)/2425$ - difference -0.2% - **No** change - Extrusion prices remain as previous month (July prices)

August LME Aluminum ingot average price: \$2385: $(2385-2425)/2425$ - difference -1.44% - **No** change - Extrusion prices remain at the same price (July prices)

September LME Aluminum ingot average price: \$2350: $(2350-2425)/2425$ - difference -3.1% - **New ingot price reference \$2350**

Each extrusion price will be decreased by 3.1% for October

And so on

The LME Cash Buyer prices are in US dollars. The contractor can convert these prices to Canadian dollars by obtaining the average closing rate for the month published daily by the Bank of Canada and displayed on the Bank of Canada website at <http://www.bankofcanada.ca/en/rates/exchange-look.html>.

Option Year 2 : For the period from April 1, 2019 to March 31, 2020

Description	Matrices #	Estimated Quantity in Metres (m)	Price**** Per Metre (m)
1. Handle aluminum	MD-18269		
a) FOB Cowansville Institution		5,250	\$_____/m
b) FOB Dorchester Institution		1,500	\$_____/m
c) All other Locations, FOB Plant		750	\$_____/m
2. Support aluminum	MD-18268		
a) FOB Cowansville Institution		5,250	\$_____/m
b) FOB Dorchester Institution		1,500	\$_____/m
c) All other Locations, FOB Plant		750	\$_____/m
3. Support screen extrusion aluminum	MD-18267		
a) FOB Cowansville Institution		2,625	\$_____/m
b) FOB Dorchester Institution		750	\$_____/m
c) All other Locations, FOB Plant		375	\$_____/m
4. Panel aluminum frame	MD-21497		
a) FOB Cowansville Institution		34,650	\$_____/m
b) FOB Dorchester Institution		9,900	\$_____/m
c) All other Locations, FOB Plant		4,950	\$_____/m
5. Connector aluminum	MD-18257		
a) FOB Cowansville Institution		29,925	\$_____/m
b) FOB Dorchester Institution		8,550	\$_____/m
c) All other Locations, FOB Plant		4,275	\$_____/m

Solicitation No. - N° de l'invitation
21C11-151003/A
Client Ref. No. - N° de réf. du client
21C11-151003

Amd. No. - N° de la modif.
File No. - N° du dossier
CAL-5-38009

Buyer ID - Id de l'acheteur
ca1125
CCC No./N° CCC - FMS No./N° VME

6. Beam aluminum

MD-18261

a) FOB Cowansville Institution	65,625	\$_____/m
b) FOB Dorchester Institution	18,750	\$_____/m
c) All other Locations, FOB Plant	9,375	\$_____/m

7. Panel ass'y corner 90° aluminum

MD-18262

a) FOB Cowansville Institution	5,250	\$_____/m
b) FOB Dorchester Institution	1,500	\$_____/m
c) All other Locations, FOB Plant	750	\$_____/m

8. Vertical radius connector aluminum

MD-18258

a) FOB Cowansville Institution	2,625	\$_____/m
b) FOB Dorchester Institution	750	\$_____/m
c) All other Locations, FOB Plant	375	\$_____/m

9. 3 way flat connector aluminum

MD-18260

a) FOB Cowansville Institution	2,625	\$_____/m
b) FOB Dorchester Institution	750	\$_____/m
c) All other Locations, FOB Plant	375	\$_____/m

10. Moulding aluminum

MD-18266

a) FOB Cowansville Institution	13,125	\$_____/m
b) FOB Dorchester Institution	3,750	\$_____/m
c) All other Locations, FOB Plant	1,875	\$_____/m

11. Power pole aluminum

MD-18265

a) FOB Cowansville Institution	5,250	\$_____/m
b) FOB Dorchester Institution	1,500	\$_____/m
c) All other Locations, FOB Plant	750	\$_____/m

Solicitation No. - N° de l'invitation
21C11-151003/A
Client Ref. No. - N° de réf. du client
21C11-151003

Amd. No. - N° de la modif.
File No. - N° du dossier
CAL-5-38009

Buyer ID - Id de l'acheteur
cal125
CCC No./N° CCC - FMS No./N° VME

12. Panel ass'y corner 135° aluminum **MD-18264**

a) FOB Cowansville Institution	1,838	\$_____/m
b) FOB Dorchester Institution	525	\$_____/m
c) All other Locations, FOB Plant	262	\$_____/m

13. Panel ass'y corner 45° aluminum **MD-18263**

a) FOB Cowansville Institution	1838	\$_____/m
b) FOB Dorchester Institution	525	\$_____/m
c) All other Locations, FOB Plant	262	\$_____/m

14. 90° "L" vertical connector aluminum **MD-18259**

a) FOB Cowansville Institution	3,413	\$_____/m
b) FOB Dorchester Institution	975	\$_____/m
c) All other Locations, FOB Plant	487	\$_____/m

15. All other products (please provide a \$0.00/kg fabrication and bar/ingot pricing)

a) FOB Cowansville Institution	\$_____/kg
b) FOB Dorchester Institution	\$_____/kg
c) All other Locations, FOB Plant	\$_____/kg

Note:

1) The minimum quantity ordered is 500 kg.

2) ***The price of aluminum ingot shall be adjusted for each month when the average price index for the calendar month previous to the date of call-up differs from the last ingot reference price by more than 3%.

The price adjustment shall be calculated in accordance with the sample calculation detailed below.

The price index shall be the Cash Buyer price on the London Metal Exchange (LME) Official Prices (US\$/tonne) - published daily by the LME and displayed on the LME website
<http://www.lme.com/aluminium.asp>

The average Price Index is calculated by adding up the daily Cash Buyer prices and dividing the sum by the number of daily prices in the calendar month.

The Contractor is responsible for establishing and supplying the price adjustment for each month and submit with proof of its calculations, to Public Works and Government Services Canada (PWGSC).

Solicitation No. - N° de l'invitation
21C11-151003/A
Client Ref. No. - N° de réf. du client
21C11-151003

Amd. No. - N° de la modif.
File No. - N° du dossier
CAL-5-38009

Buyer ID - Id de l'acheteur
cal125
CCC No./N° CCC - FMS No./N° VME

Sample Calculation:

NISO aluminum ingot price set-up: April: \$2345 (Reference price)

April LME Aluminum ingot average price: \$2345

May LME Aluminum ingot average price: \$2390: $(2390-2345)/2345$ - difference +1.9% - **No** change to reference price for June

June LME Aluminum ingot average price: \$2425: $(2425-2345)/2345$ - difference +3.4% - **New ingot price reference \$2425**

Each extrusion price will be increased by 3.4% for July

July LME Aluminum ingot average price: \$2420: $(2420-2425)/2425$ - difference -0.2% - **No** change - Extrusion prices remain as previous month (July prices)

August LME Aluminum ingot average price: \$2385: $(2385-2425)/2425$ - difference -1.44% - **No** change - Extrusion prices remain at the same price (July prices)

September LME Aluminum ingot average price: \$2350: $(2350-2425)/2425$ - difference -3.1% - **New ingot price reference \$2350**

Each extrusion price will be decreased by 3.1% for October

And so on

The LME Cash Buyer prices are in US dollars. The contractor can convert these prices to Canadian dollars by obtaining the average closing rate for the month published daily by the Bank of Canada and displayed on the Bank of Canada website at <http://www.bankofcanada.ca/en/rates/exchange-look.html>.

Option Year 3 : For the period from April 1, 2020 to March 31, 2021

Description	Matrices #	Estimated Quantity in Metres (m)	Price**** Per Metre (m)
1. Handle aluminum	MD-18269		
a) FOB Cowansville Institution		5,250	\$_____/m
b) FOB Dorchester Institution		1,500	\$_____/m
c) All other Locations, FOB Plant		750	\$_____/m
2. Support aluminum	MD-18268		
a) FOB Cowansville Institution		5,250	\$_____/m
b) FOB Dorchester Institution		1,500	\$_____/m
c) All other Locations, FOB Plant		750	\$_____/m
3. Support screen extrusion aluminum	MD-18267		
a) FOB Cowansville Institution		2,625	\$_____/m
b) FOB Dorchester Institution		750	\$_____/m
c) All other Locations, FOB Plant		375	\$_____/m
4. Panel aluminum frame	MD-21497		
a) FOB Cowansville Institution		34,650	\$_____/m
b) FOB Dorchester Institution		9,900	\$_____/m
c) All other Locations, FOB Plant		4,950	\$_____/m
5. Connector aluminum	MD-18257		
a) FOB Cowansville Institution		29,925	\$_____/m
b) FOB Dorchester Institution		8,550	\$_____/m
c) All other Locations, FOB Plant		4,275	\$_____/m

Solicitation No. - N° de l'invitation
21C11-151003/A
Client Ref. No. - N° de réf. du client
21C11-151003

Amd. No. - N° de la modif.
File No. - N° du dossier
CAL-5-38009

Buyer ID - Id de l'acheteur
ca1125
CCC No./N° CCC - FMS No./N° VME

6. Beam aluminum	MD-18261		
a) FOB Cowansville Institution	65,625	\$_____	/m
b) FOB Dorchester Institution	18,750	\$_____	/m
c) All other Locations, FOB Plant	9,375	\$_____	/m
7. Panel ass'y corner 90° aluminum	MD-18262		
a) FOB Cowansville Institution	5,250	\$_____	/m
b) FOB Dorchester Institution	1,500	\$_____	/m
c) All other Locations, FOB Plant	750	\$_____	/m
8. Vertical radius connector aluminum	MD-18258		
a) FOB Cowansville Institution	2,625	\$_____	/m
b) FOB Dorchester Institution	750	\$_____	/m
c) All other Locations, FOB Plant	375	\$_____	/m
9. 3 way flat connector aluminum	MD-18260		
a) FOB Cowansville Institution	2,625	\$_____	/m
b) FOB Dorchester Institution	750	\$_____	/m
c) All other Locations, FOB Plant	375	\$_____	/m
10. Moulding aluminum	MD-18266		
a) FOB Cowansville Institution	13,125	\$_____	/m
b) FOB Dorchester Institution	3,750	\$_____	/m
c) All other Locations, FOB Plant	1,875	\$_____	/m
11. Power pole aluminum	MD-18265		
a) FOB Cowansville Institution	5,250	\$_____	/m
b) FOB Dorchester Institution	1,500	\$_____	/m
c) All other Locations, FOB Plant	750	\$_____	/m

Solicitation No. - N° de l'invitation
21C11-151003/A
Client Ref. No. - N° de réf. du client
21C11-151003

Amd. No. - N° de la modif.
File No. - N° du dossier
CAL-5-38009

Buyer ID - Id de l'acheteur
cal125
CCC No./N° CCC - FMS No./N° VME

12. Panel ass'y corner 135° aluminum **MD-18264**

a) FOB Cowansville Institution	1,838	\$_____/m
b) FOB Dorchester Institution	525	\$_____/m
c) All other Locations, FOB Plant	262	\$_____/m

13. Panel ass'y corner 45° aluminum **MD-18263**

a) FOB Cowansville Institution	1838	\$_____/m
b) FOB Dorchester Institution	525	\$_____/m
c) All other Locations, FOB Plant	262	\$_____/m

14. 90° "L" vertical connector aluminum **MD-18259**

a) FOB Cowansville Institution	3,413	\$_____/m
b) FOB Dorchester Institution	975	\$_____/m
c) All other Locations, FOB Plant	487	\$_____/m

15. All other products (please provide a \$0.00/kg fabrication and bar/ingot pricing)

a) FOB Cowansville Institution	\$_____/kg
b) FOB Dorchester Institution	\$_____/kg
c) All other Locations, FOB Plant	\$_____/kg

Note:

1) The minimum quantity ordered is 500 kg.

2) ***The price of aluminum ingot shall be adjusted for each month when the average price index for the calendar month previous to the date of call-up differs from the last ingot reference price by more than 3%.

The price adjustment shall be calculated in accordance with the sample calculation detailed below.

The price index shall be the Cash Buyer price on the London Metal Exchange (LME) Official Prices (US\$/tonne) - published daily by the LME and displayed on the LME website
<http://www.lme.com/aluminium.asp>

The average Price Index is calculated by adding up the daily Cash Buyer prices and dividing the sum by the number of daily prices in the calendar month.

The Contractor is responsible for establishing and supplying the price adjustment for each month and submit with proof of its calculations, to Public Works and Government Services Canada (PWGSC).

Solicitation No. - N° de l'invitation
21C11-151003/A
Client Ref. No. - N° de réf. du client
21C11-151003

Amd. No. - N° de la modif.
File No. - N° du dossier
CAL-5-38009

Buyer ID - Id de l'acheteur
cal125
CCC No./N° CCC - FMS No./N° VME

Sample Calculation:

NISO aluminum ingot price set-up: April: \$2345 (Reference price)

April LME Aluminum ingot average price: \$2345

May LME Aluminum ingot average price: \$2390: $(2390-2345)/2345$ - difference +1.9% - **No** change to reference price for June

June LME Aluminum ingot average price: \$2425: $(2425-2345)/2345$ - difference +3.4% - **New ingot price reference \$2425**

Each extrusion price will be increased by 3.4% for July

July LME Aluminum ingot average price: \$2420: $(2420-2425)/2425$ - difference -0.2% - **No** change - Extrusion prices remain as previous month (July prices)

August LME Aluminum ingot average price: \$2385: $(2385-2425)/2425$ - difference -1.44% - **No** change - Extrusion prices remain at the same price (July prices)

September LME Aluminum ingot average price: \$2350: $(2350-2425)/2425$ - difference -3.1% - **New ingot price reference \$2350**

Each extrusion price will be decreased by 3.1% for October

And so on

The LME Cash Buyer prices are in US dollars. The contractor can convert these prices to Canadian dollars by obtaining the average closing rate for the month published daily by the Bank of Canada and displayed on the Bank of Canada website at <http://www.bankofcanada.ca/en/rates/exchange-look.html>.

Option Year 4 : For the period from April 1, 2021 to March 31, 2022

Description	Matrices #	Estimated Quantity in Metres (m)	Price**** Per Metre (m)
1. Handle aluminum	MD-18269		
a) FOB Cowansville Institution		5,250	\$_____/m
b) FOB Dorchester Institution		1,500	\$_____/m
c) All other Locations, FOB Plant		750	\$_____/m
2. Support aluminum	MD-18268		
a) FOB Cowansville Institution		5,250	\$_____/m
b) FOB Dorchester Institution		1,500	\$_____/m
c) All other Locations, FOB Plant		750	\$_____/m
3. Support screen extrusion aluminum	MD-18267		
a) FOB Cowansville Institution		2,625	\$_____/m
b) FOB Dorchester Institution		750	\$_____/m
c) All other Locations, FOB Plant		375	\$_____/m
4. Panel aluminum frame	MD-21497		
a) FOB Cowansville Institution		34,650	\$_____/m
b) FOB Dorchester Institution		9,900	\$_____/m
c) All other Locations, FOB Plant		4,950	\$_____/m
5. Connector aluminum	MD-18257		
a) FOB Cowansville Institution		29,925	\$_____/m
b) FOB Dorchester Institution		8,550	\$_____/m
c) All other Locations, FOB Plant		4,275	\$_____/m

Solicitation No. - N° de l'invitation
21C11-151003/A
Client Ref. No. - N° de réf. du client
21C11-151003

Amd. No. - N° de la modif.
File No. - N° du dossier
CAL-5-38009

Buyer ID - Id de l'acheteur
ca1125
CCC No./N° CCC - FMS No./N° VME

6. Beam aluminum

MD-18261

a) FOB Cowansville Institution	65,625	\$_____/m
b) FOB Dorchester Institution	18,750	\$_____/m
c) All other Locations, FOB Plant	9,375	\$_____/m

7. Panel ass'y corner 90° aluminum

MD-18262

a) FOB Cowansville Institution	5,250	\$_____/m
b) FOB Dorchester Institution	1,500	\$_____/m
c) All other Locations, FOB Plant	750	\$_____/m

8. Vertical radius connector aluminum

MD-18258

a) FOB Cowansville Institution	2,625	\$_____/m
b) FOB Dorchester Institution	750	\$_____/m
c) All other Locations, FOB Plant	375	\$_____/m

9. 3 way flat connector aluminum

MD-18260

a) FOB Cowansville Institution	2,625	\$_____/m
b) FOB Dorchester Institution	750	\$_____/m
c) All other Locations, FOB Plant	375	\$_____/m

10. Moulding aluminum

MD-18266

a) FOB Cowansville Institution	13,125	\$_____/m
b) FOB Dorchester Institution	3,750	\$_____/m
c) All other Locations, FOB Plant	1,875	\$_____/m

11. Power pole aluminum

MD-18265

a) FOB Cowansville Institution	5,250	\$_____/m
b) FOB Dorchester Institution	1,500	\$_____/m
c) All other Locations, FOB Plant	750	\$_____/m

Solicitation No. - N° de l'invitation
21C11-151003/A
Client Ref. No. - N° de réf. du client
21C11-151003

Amd. No. - N° de la modif.
File No. - N° du dossier
CAL-5-38009

Buyer ID - Id de l'acheteur
cal125
CCC No./N° CCC - FMS No./N° VME

12. Panel ass'y corner 135° aluminum **MD-18264**

a) FOB Cowansville Institution	1,838	\$_____/m
b) FOB Dorchester Institution	525	\$_____/m
c) All other Locations, FOB Plant	262	\$_____/m

13. Panel ass'y corner 45° aluminum **MD-18263**

a) FOB Cowansville Institution	1838	\$_____/m
b) FOB Dorchester Institution	525	\$_____/m
c) All other Locations, FOB Plant	262	\$_____/m

14. 90° "L" vertical connector aluminum **MD-18259**

a) FOB Cowansville Institution	3,413	\$_____/m
b) FOB Dorchester Institution	975	\$_____/m
c) All other Locations, FOB Plant	487	\$_____/m

15. All other products (please provide a \$0.00/kg fabrication and bar/ingot pricing)

a) FOB Cowansville Institution	\$_____/kg
b) FOB Dorchester Institution	\$_____/kg
c) All other Locations, FOB Plant	\$_____/kg

Note:

1) The minimum quantity ordered is 500 kg.

2) ***The price of aluminum ingot shall be adjusted for each month when the average price index for the calendar month previous to the date of call-up differs from the last ingot reference price by more than 3%.

The price adjustment shall be calculated in accordance with the sample calculation detailed below.

The price index shall be the Cash Buyer price on the London Metal Exchange (LME) Official Prices (US\$/tonne) - published daily by the LME and displayed on the LME website
<http://www.lme.com/aluminium.asp>

The average Price Index is calculated by adding up the daily Cash Buyer prices and dividing the sum by the number of daily prices in the calendar month.

The Contractor is responsible for establishing and supplying the price adjustment for each month and submit with proof of its calculations, to Public Works and Government Services Canada (PWGSC).

Solicitation No. - N° de l'invitation
21C11-151003/A
Client Ref. No. - N° de réf. du client
21C11-151003

Amd. No. - N° de la modif.
File No. - N° du dossier
CAL-5-38009

Buyer ID - Id de l'acheteur
cal125
CCC No./N° CCC - FMS No./N° VME

Sample Calculation:

NISO aluminum ingot price set-up: April: \$2345 (Reference price)

April LME Aluminum ingot average price: \$2345

May LME Aluminum ingot average price: \$2390: $(2390-2345)/2345$ - difference +1.9% - **No** change to reference price for June

June LME Aluminum ingot average price: \$2425: $(2425-2345)/2345$ - difference +3.4% - **New ingot price reference \$2425**

Each extrusion price will be increased by 3.4% for July

July LME Aluminum ingot average price: \$2420: $(2420-2425)/2425$ - difference -0.2% - **No** change - Extrusion prices remain as previous month (July prices)

August LME Aluminum ingot average price: \$2385: $(2385-2425)/2425$ - difference -1.44% - **No** change - Extrusion prices remain at the same price (July prices)

September LME Aluminum ingot average price: \$2350: $(2350-2425)/2425$ - difference -3.1% - **New ingot price reference \$2350**

Each extrusion price will be decreased by 3.1% for October

And so on

The LME Cash Buyer prices are in US dollars. The contractor can convert these prices to Canadian dollars by obtaining the average closing rate for the month published daily by the Bank of Canada and displayed on the Bank of Canada website at <http://www.bankofcanada.ca/en/rates/exchange-look.html>.

Solicitation No. - N° de l'invitation
21C11-151003/A
Client Ref. No. - N° de réf. du client
21C11-151003

Amd. No. - N° de la modif.
File No. - N° du dossier
CAL-5-38009

Buyer ID - Id de l'acheteur
cal125
CCC No./N° CCC - FMS No./N° VME

ANNEX "C"

DELIVERY DESTINATIONS AND AUTHORIZED SITE AUTHORITIES

The authorized Site Authorities are the CORCAN Operations Manager or Business Manager for the CORCAN manufacturing facilities (also the delivery destinations) located at the Correctional Services Canada Institutions noted below. It is to be understood by all parties that the number orders (e.g. call-ups) and their size will vary by production facility and that all facilities may not place orders during the time frame of this Solicitation/resultant Standing Offer.

1) Dorchester Institution****
4902 Main Street
Dorchester, NB
E4K 2Y9

2) Cowansville Institution ****
P.O. Box 5000
400 rue Fordyce
Cowansville, Que
J2K 3N7

3) All other CSC CORCAN locations across Canada

**** CORCAN's higher-use facilities

Solicitation No. - N° de l'invitation
21C11-151003/A
Client Ref. No. - N° de réf. du client
21C11-151003

Amd. No. - N° de la modif.
File No. - N° du dossier
CAL-5-38009

Buyer ID - Id de l'acheteur
ca1125
CCC No./N° CCC - FMS No./N° VME

ANNEX “D “

DRAWINGS

(see attached)

Solicitation No. - N° de l'invitation
21C11-151003/A
Client Ref. No. - N° de réf. du client
21C11-151003

Amd. No. - N° de la modif.
File No. - N° du dossier
CAL-5-38009

Buyer ID - Id de l'acheteur
cal125
CCC No./N° CCC - FMS No./N° VME

ANNEX "E"

STANDING OFFER USAGE REPORT

Return to:

Email: WST.PA-CAL@pwgsc-tpsgc.gc.ca

Facsimile: (403) 292-5786

The usage reports must be submitted no later than fifteen (15) calendar days after the end of the reporting period.

SUPPLIER:

STANDING OFFER NO:

DEPARTMENT OR AGENCY:

REPORTING PERIOD: ☐ July 1 to September 30

☐ October 1 to December 31

☐ January 1 to March 31

☐ April 1 to June 30

Call-up No.	Description	Value of each call-up (GST included)
1		
2		
3		
4		
5		
6		
7		
8		
9		
10		
Total Dollar Value Call-ups for this reporting period:		

NIL REPORT: We have not done any business with the federal government for this period ☐

PREPARED BY:

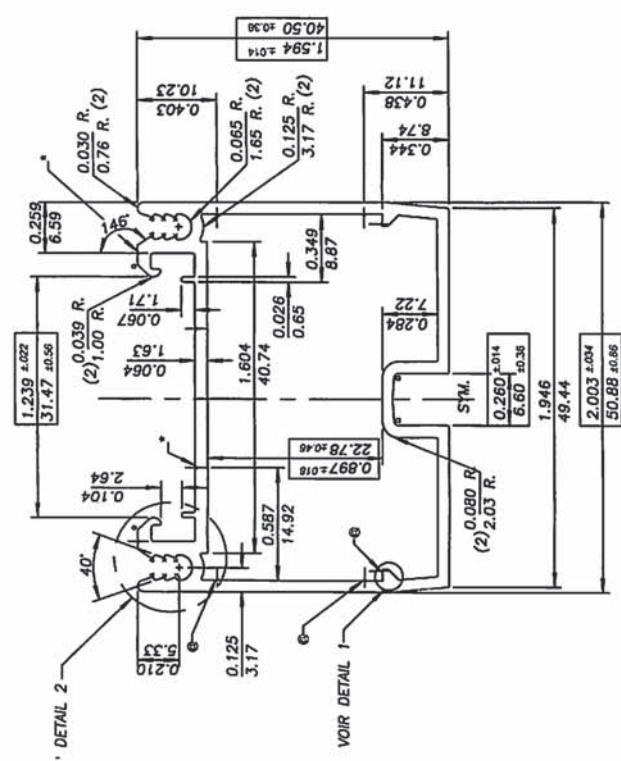
NAME: _____

TELEPHONE NO.: _____

SIGNATURE: _____

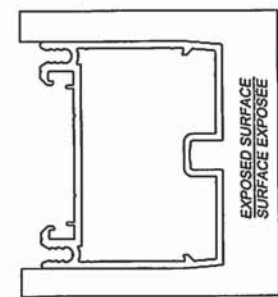
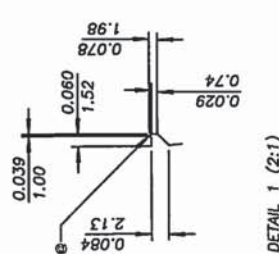
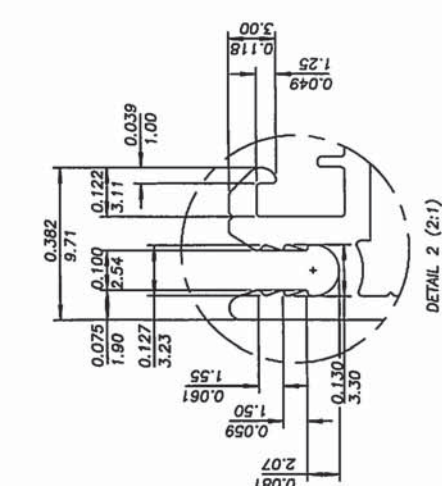
DATE: _____

REVISIONS				
REV	ZONE	ENGINEERING CHANGE ORDER DIRECTOR OF CHARGEMENT	CHECKED VERIFIE	DATE
E		ECO # 06-589	R. LEVESQUE	27/11/06



NOTES:
 @ = 0.25 x 90° (V BUMP)
 * = 0.25 x 90° (V GROOVE)

(*) = 0.005(0.13) R. (8)
 (*) = 0.015(0.38) R. (4)
 (*) = 0.020(0.50) R. (2)
 (*) = 0.020(0.51) R. (2)
 UNMARKED RADII = RADIUS TO SUIT
 BREAK CORNERS = 0.010(0.25) R.



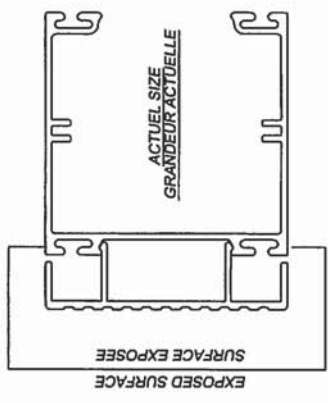
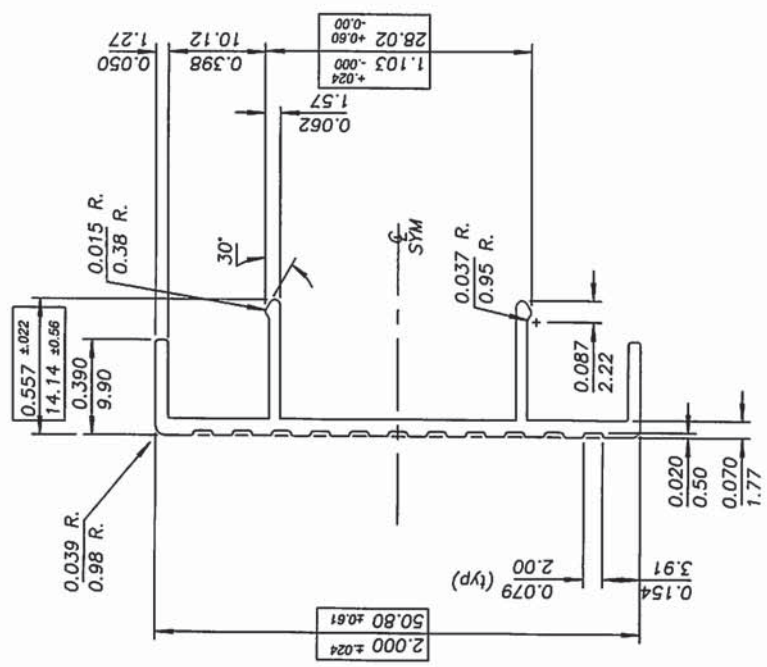
ALUMINUM EXTRUSION ALLOY-6063-T5 EXTRUSION ALUMINIUM ALLIAGE-6063-T5		ITEM	R.A.L.C./D.W.G	MATERIAL	UNIT STANDARD UNITES
PART LIST/NOMENCLATURE DES PIECES					
TITLE/TITRE					
PANEL ALUMINUM FRAME CADRE DE PANNEAU EN ALUMINIUM					
QUANTITY QNT./QTE.	DRAWING NO. DWS./DSE.	DATE			
1	1	27/11/06			
UNLESS OTHERWISE SPECIFIED A moins d'indication contraire, les dimensions sont en millimètres					
DECIMAL: .XX ± 0.250 ANGLES: ± 1/2°					
FIRST SCALE (DO NOT SCALE)					
FOR PRODUCT RELEASE					
MD-21497					
CORCAN					
DESIGN DE REFERENCE REFERENCE DRAWING					
DRAWING LIST NO. NO. LIST DRSN					
E.S. NO. NO. DSE					
DRAWING NO. NO. DRSN					
USED ON ASSY/UTILISE SUR ASS'GE					

NOTES: REF. 01002
 INCHES: 1/8" = 3.175mm

0 100

REVISIONS

REV	ZONE	DESCRIPTION CHANGÉ / CHANGÉ	APPROVED	DATE
E		ECO # 06-589	R. LEVESQUE	27/11/06



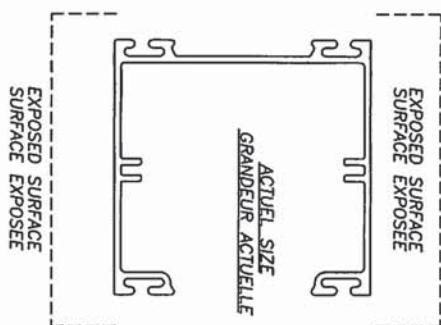
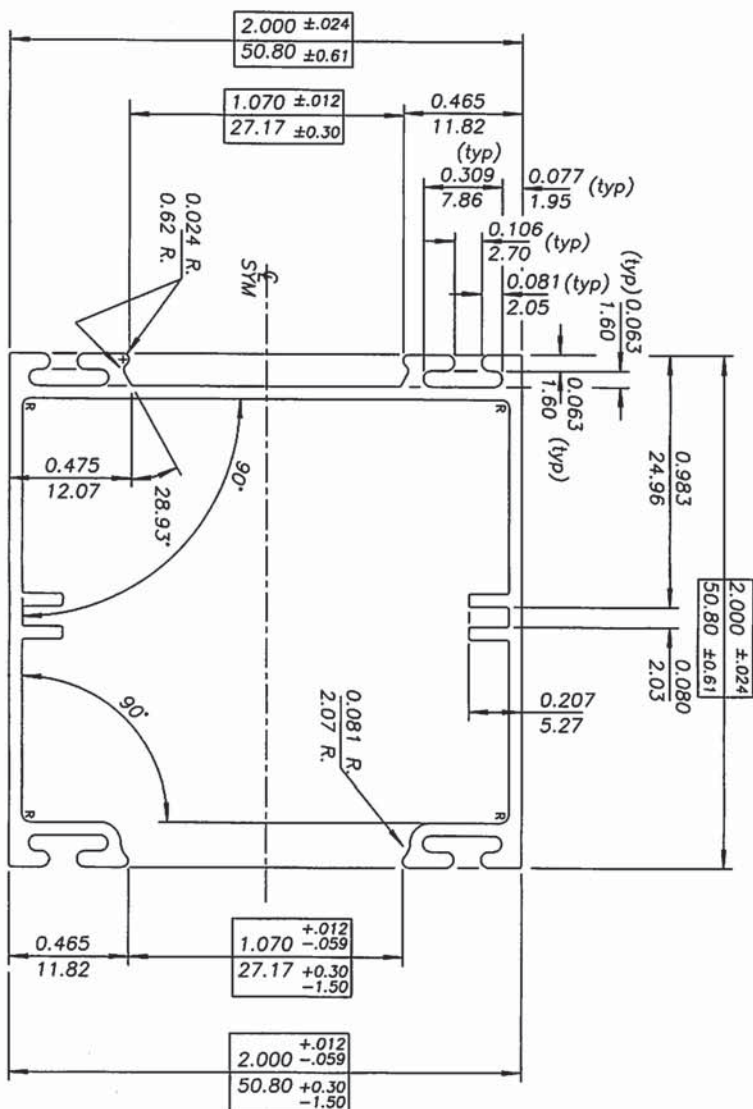
(R) = 0.031(0.80) R.
UNMARKED RADIUS TO SUIT
BREAK CORNERS = 0.010(0.25) R.
(R) = 0.031(0.80) R.
LE RAYON NON SPÉC. = RAYON SELON LE BESOIN
ARRONDIR LES COINS = 0.010(0.25) R.

QTY./PCE	ITEM	P.A.C./PCE	MATERIAL	UNIT	REMARKS
1	1		ALUMINUM EXTRUSION. ALLOY-6063-T5 EXTRUSION ALUMINUM ALLIAGE-6063-T5		
PART LIST/NOMENCLATURE DES PIÈCES					
TITLE/TITRE					
MOULDING ALUMINUM					
MOULURE ALUMINIUM					
A MONS D'INDICATION					
DIMENSIONS SONT EN MILLIMÈTRES					
ANGLES A 1/2°					
PLOT SCALE (100 HOT SCALE)					
DATE					
27/11/06					
STATUS					
FOR INFORMATION ONLY					
MD-18266					

CORCAN
THESE DIMENSIONS SONT CONSIDÉRÉES COMME DES DIMENSIONS NOMINALES. LE PROPRIÉTAIRE DE LA CONSTRUCTION DOIT S'ASSURER QUE LES DIMENSIONS RÉELLES SONT CONFORMES À CES DIMENSIONS NOMINALES. LE PROPRIÉTAIRE DE LA CONSTRUCTION DOIT S'ASSURER QUE LES DIMENSIONS RÉELLES SONT CONFORMES À CES DIMENSIONS NOMINALES. LE PROPRIÉTAIRE DE LA CONSTRUCTION DOIT S'ASSURER QUE LES DIMENSIONS RÉELLES SONT CONFORMES À CES DIMENSIONS NOMINALES.

NOTES: REV. 01/06
PROJ. 01/06

REVIEWS						
REV	ZONE	UNREVIEWED CHANGES REVISIONS OF CORRECTIONS	APPROVED APPROVED	DIRECTED VARIATION	DEVELOP DEVELOP	DATE
E		ECO # 06-589		RILEVESQUE	S.Couin	27/11/06



$(R) = 0.031(0.80) \text{ R.}$
 UNMARKED RADI = RADIUS TO SUIT
 BREAK CORNERS = $0.010(0.25) \text{ R.}$
 $(R) = 0.031(0.80) \text{ R.}$
 LE RAYON NON SPEC. = RAYON SELON LE BESOIN
 ARRONDIR LES COINS = $0.010(0.25) \text{ R.}$

NOTES: RTZ, SYMBO, SYMBOLE DE RTZ. 

CORCAN

DESSIN DE RÉFÉRENCE REFERENCE DRAWING		
OKAYING LIST NO.	P.C. NO. C.F.	DRAWING NO. NO. DRESSIN
USED ON ASS'Y/UTILISE SUR ASS'GE		

[illegible]

ALUMINIUM EXTRUSION
ALLOY-6063-T5
EXTRUSION ALUMINIUM
ALLAGE-6063-T5

QTY	QTY	UNIT	STANDARD	UNIT	UNIT
QTY	QTY	UNIT	STANDARD	UNIT	UNIT
PART LIST/NOMENCLATURE DES PIECES					
TITLE/TITRE					
POWER POLE ALUMINUM					

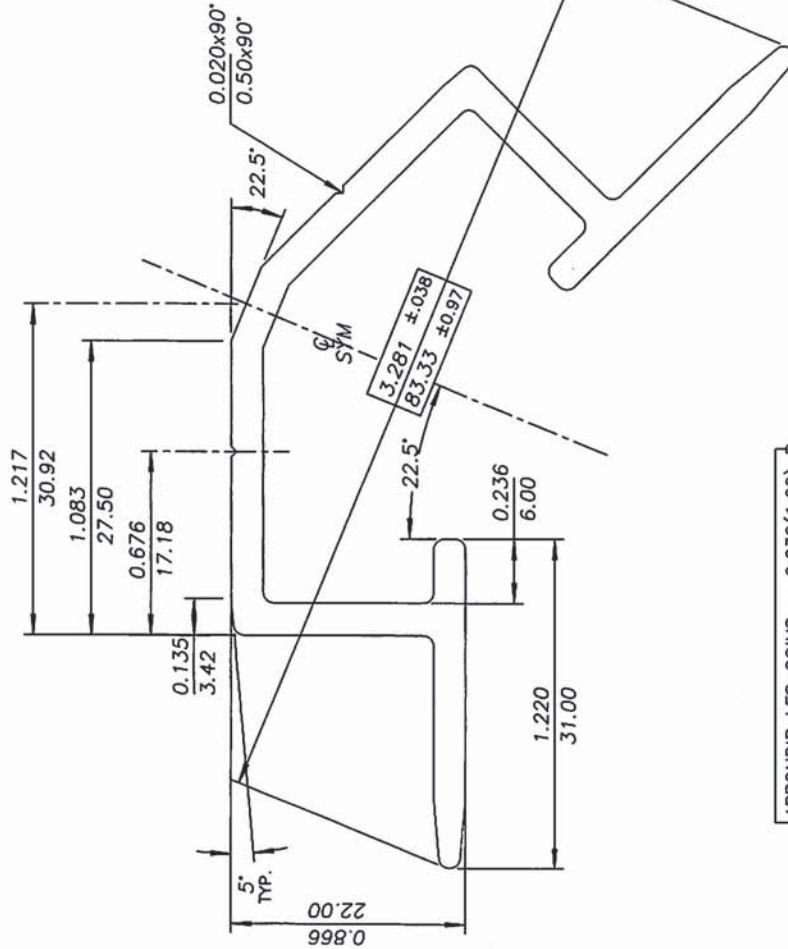
COLONNETTE ALUMINIUM

Client	Synch Cardu	CH/CD/6/W/01R	R. LUTSOUN
	27/11/00	PAT	27/11/00

STATUS	FOR INFORMATION ONLY

MD/MO. BGSUN	MD-18265	ALVINSON	SWT/THU
		E	1 OF 101

REVISIONS				
REV	ZONE	DESCRIPTION CHANGES OBJETS DES MODIFICATIONS	APPROVED APPROUVE	DATE
E		ECO # 06-589	R. LEVESQUE S. Coultu	27/11/06



ARRONDIR LES COINS = 0.039(1.00) R.
BREAK CORNERS = 0.039(1.00) R.

PAS EXPOSEE
NO EXPOSED

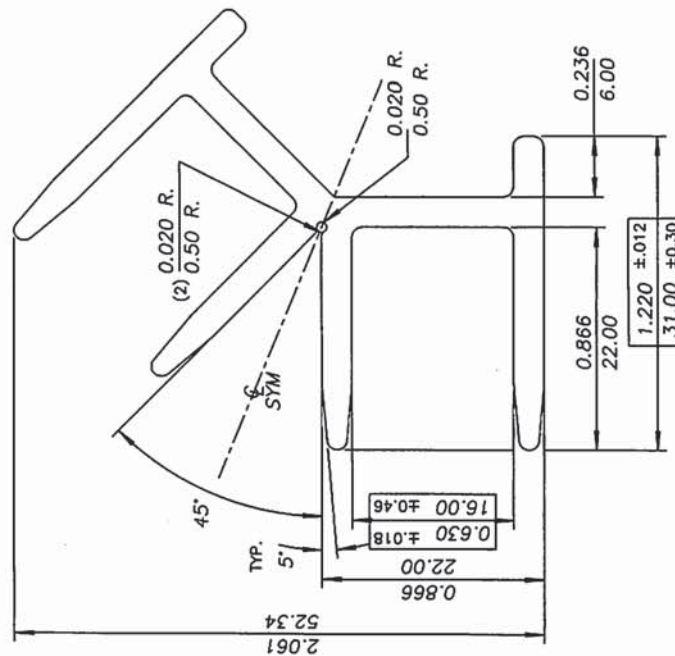
ACTUELLE SIZE
GRANDEUR ACTUELLE

ALUMINIUM EXTRUSION.
ALLOY 6063-T5
EXTRUSION ALUMINIUM
ALLIAGE 6063-T5

QTY./QTE.	ITEM	R.A.L.E./R.M.G.	MATERIAL	DATE DATE	STANDARD NORME
1					
PART LIST/NOMENCLATURE DES PIECES					
TITLE/TITRE					
PANEL ASS'Y CORNER 135°					
ALUMINIUM					
COIN D'ASSEMBLAGE 135°					
ALUMINIUM					
UNLESS OTHERWISE SPECIFIED UNLESS OTHERWISE SPECIFIED					
DIMENSIONS ARE IN MILLIMETRES DIMENSIONS ARE EN MILLIMETRES					
A. MARKS OF INDICATION A. MARQUES D'INDICATION					
OF DIMENSIONS ARE IN MILLIMETRES DES DIMENSIONS SONT EN MILLIMETRES					
DECIMAL: .XX ± 0.250 DECIMAL: .XX ± 1.00					
ANGLE: 1/2°					
NOT SCALE (DO NOT SCALE)					

CORCAN			
DESIGN DE REFERENCE REFERENCE DAWNING			
DRAWING LIST NO. NO. LISTE DES DESSINS	P.C. NO. NO. C.P.	DRAWING NO. NO. DESSIN	USED ON ASS'Y/UTILISE SUR ASS'GE

NOTES: REF. STAGE
NOTES: STAGE DE REF.



PAS EXPOSEE	NO EXPOSED

ACTUEL SIZE
GRANDEUR ACTUELLE

REVISIONS					
REV	ZONE	ENGINEERING CHANGE PARTICULARS	APPROVED DATE	CHECKED DATE	DRAWN DATE
E		ECO # 06-589		R.LEVESQUE	S.Coutu
					27/11/08

[illegible]

ARRONDIR LES COINS = 0.039(1.00) R.
BREAK CORNERS = 0.039(1.00) R.

CORCAN

THESE DIMENSIONS ET SPECIFICATIONS SONT
CENES DESIGNANT LE MATERIEL QUI DOIT ETRE
UTILISE POUR LA FABRICATION DU REFRIGERATEUR
CORCAN.

THESE DIMENSIONS AND SPECIFICATIONS ARE
DESIGNATING THE MATERIAL WHICH MUST BE
USED FOR THE MANUFACTURE OF CORCAN
REFRIGERATORS.

DESSIN DE RÉFÉRENCE
REFERENCE DRAWING

NOTES: KEY: SYMBOL
SYMBOL DE REF. 



NOTES: REF. SYMBOL
SYMBOL DE REF.

[illegible]

DRAWING LIST NO. NO. LISTE DES NO.	P.C. NO. NO. C.P.	FORMULARIO NO. NO. FORM.
--	----------------------	-----------------------------

DESSIN DE RÉFÉRENCE
 RÉFÉRENCE DRAWING

USED ON ASS'Y/UTILISE SUR ASSGE

[illegible]
$$\begin{aligned} \{^*\} &= 0.023(0.59) \quad R. \{2\} \\ \{S\} &= 0.024(0.52) \quad R. \{4\} \\ \{T\} &= 0.031(0.80) \quad R. \{8\} \end{aligned}$$

BREAK CORNERS = 0.010(0.25) R.

NOTES: REF. SYMBOL
SYMBOL DE REF.