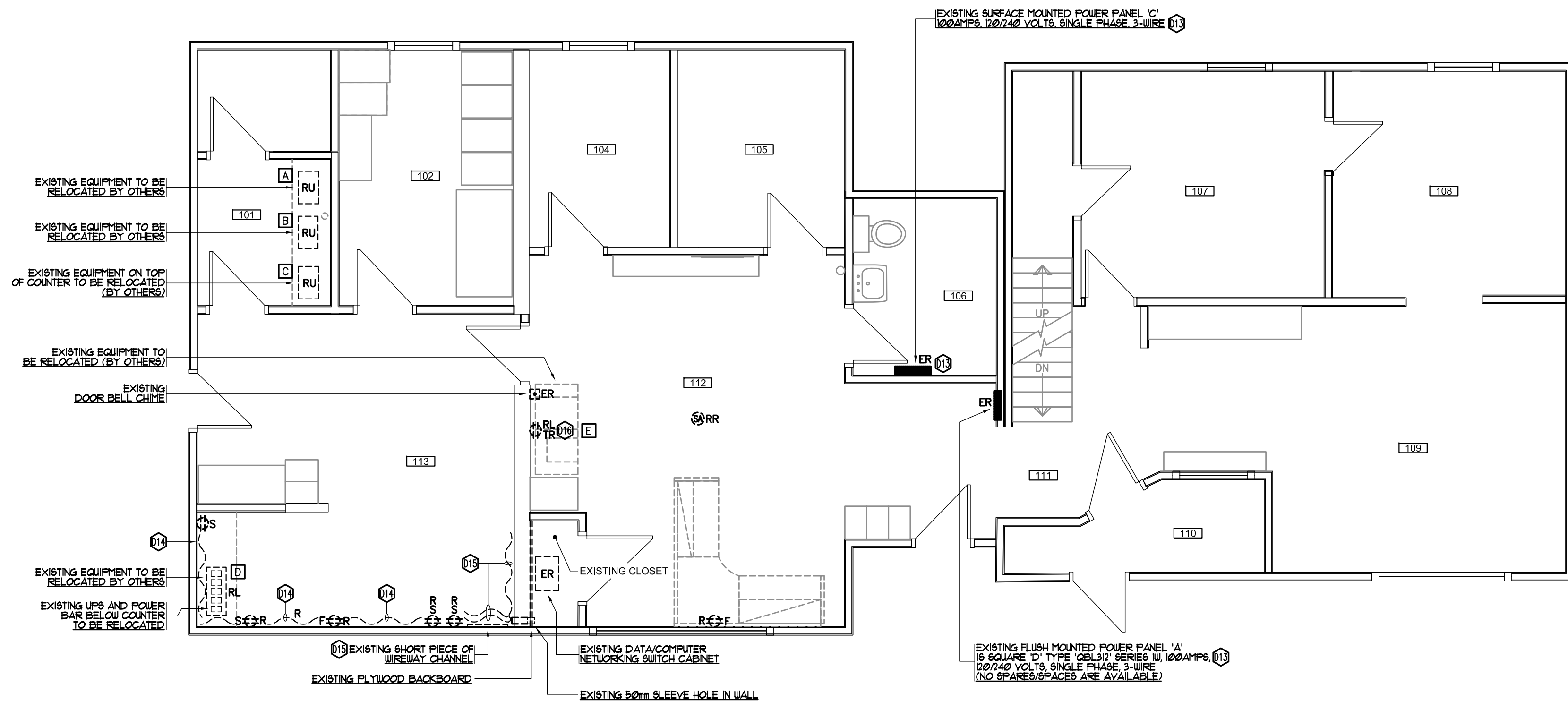


Notes:

- Do not scale drawing
- It is the responsibility of the appropriate Contractor to check and verify all dimensions on site and report all errors and/or omissions to the Architect or Engineer
- It is the responsibility of the appropriate Contractor to comply with all Codes and Regulations applicable to the performance of their work.
- All Drawings and Specifications are instruments of service and are the property of the Architect or Engineer. This Drawing is the Copyright of STEPHENS KOZAK ACI ARCHITECTS AND PLANNERS or the Consultant named on this Drawing as at the date shown and may not be used or reproduced in whole or in part without the express written consent of the Architect or Engineer.
- All dimensions are in mm unless noted otherwise.



18162 - 102 Avenue  
Edmonton, AB T5S 1S7  
Tel: (780) 486-4478  
Fax: (780) 483-0197  
Email: joeng@cslnet.com  
JO PROJECT # 1557

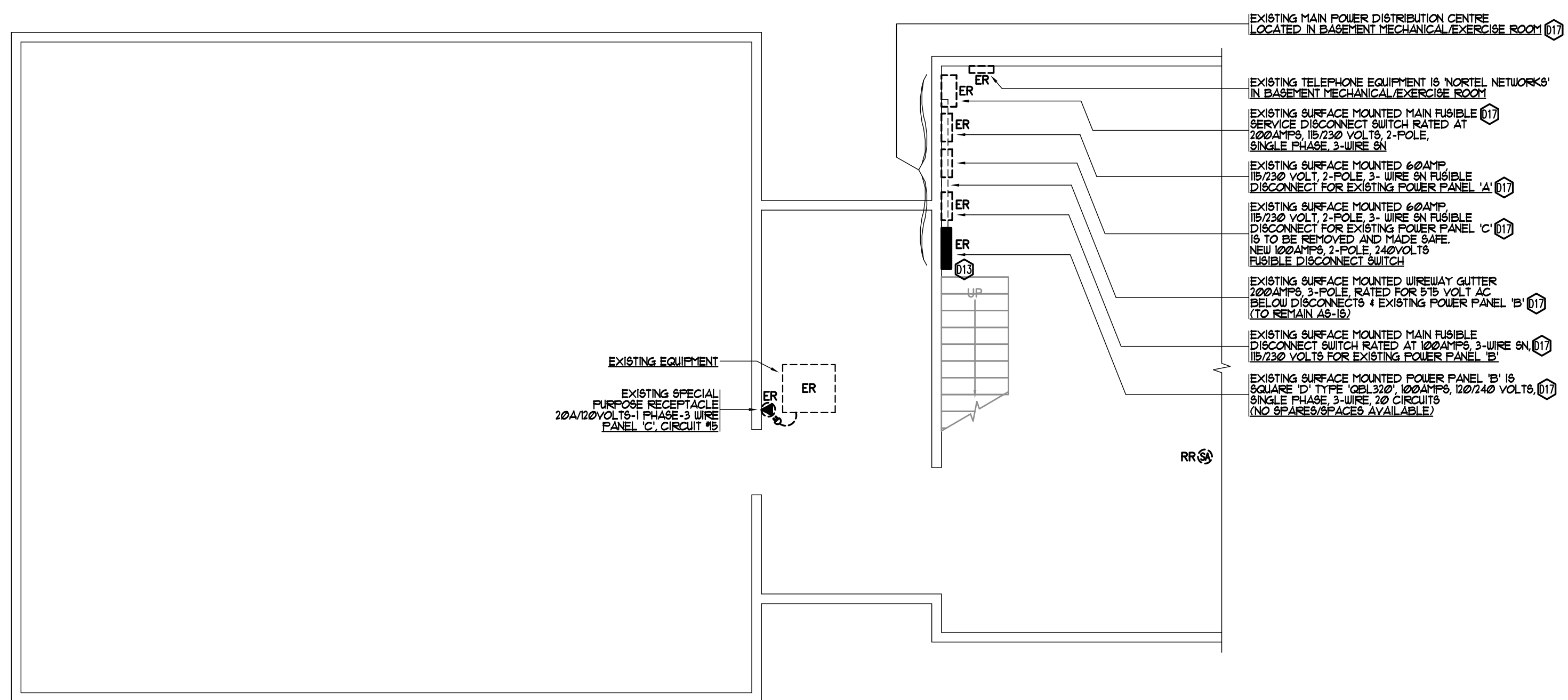


**FIRST FLOOR PLAN - ELECTRICAL DEMOLITION LAYOUT** (1) (2) (3) (4) (5) (6) (7) (8) (9) (10) (11) (12)  
SCALE: 1:50

SYMBOLS	
	EMERGENCY (EM) LIGHTS BATTERY PACK
	EMERGENCY (EM) COMBINATION EXIT LIGHT/SIGN WITH TWO (2) EM HEADS AND BATTERY PACK
	EMERGENCY (EM) LIGHT TWO (2) REMOTE HEADS
	UP-STOP/DN SWITCH CONTROL FOR MOTORIZED PROJECTOR SCREEN
	EXISTING DUPLEX RECEPTACLE (F = FLUSH MOUNTED, S = SURFACE)
	DUPLEX RECEPTACLE
	DUPLEX T-SLOT RECEPTACLE (20 INDICATES 20AMP)
	SMOKE ALARM DETECTOR - BATTERY OPERATED
	EXISTING TELEPHONE OUTLET
	EXISTING DATA OUTLET
	TELEPHONE OUTLET
	FAX OUTLET
	COMPUTER OUTLET (2 = TWO (2) COMPUTER MODULES)
	RADIO OUTLET WITH CAT. 5 OR CAT. 6 CABLING FOR RADIO REMOTE UNIT
	NEW MOTORIZED PROJECTOR SCREEN
	EXISTING 'BX' RACEWAYS TO BE REMOVED (R)
	EXISTING TO BE REMOVED
	EXISTING TO REMAIN
	RELOCATED (EXISTING TO BE RELOCATED)
	RE-USE (EXISTING TO BE RE-USED)
	REMOVE AND RE-INSTALL
	LOW VOLTAGE TRANSFORMER
	FIXTURE TYPE REFERENCE
	DRAWING NOTE REFERENCE

PANEL SCHEDULE	
<p><b>EXISTING FLUSH MOUNTED POWER PANEL 'A'</b> 'SQUARE D' TYPE 'QBL3-12', 120/240VOLTS-1 PHASE-3 WIRE</p> <p>- NO SPARES/SPACES ARE AVAILABLE</p> <p><b>EXISTING SURFACE MOUNTED POWER PANEL 'B'</b> 'SQUARE D' TYPE 'QBL320', SERIES 1U, 100AMP, 120/240VOLTS-1 PHASE-3 WIRE</p> <p>- NO SPARES/SPACES ARE AVAILABLE</p> <p><b>EXISTING SURFACE MOUNTED POWER PANEL 'C'</b> 'FEDERAL PIONEER' 'STAB-LOK', 100AMP, 120/240VOLTS-1 PHASE-3 WIRE</p> <p>- EXISTING THREE (3) SPACES AVAILABLE (C-5, C-1 &amp; C-9) - PROVIDE AND INSTALL TWO (2) - 15A/1P BRANCH CIRCUIT BREAKERS (POLE #5 - NEW EM BATTERY PACK &amp; POLE #1 - NEW EXIT SIGN/LIGHT &amp; COMBO EXIT SIGN/BATTERY PACK)</p>	<p><b>NEW SURFACE MOUNTED POWER PANEL 'D'</b> 100AMP BUS, 120/240VOLTS-1 PHASE-3 WIRE, 40 CIRCUITS</p> <p>5-1P-15A-BRKS - LOW VOLTAGE TRANSFORMER (TR) FOR DOORBELL CHIME (D-18) &amp; AUXILIARY 4 AUXILIARY 20-1P-20A-BRKS - NEW PROJECTION SCREEN MOTOR (D-16) &amp; AUXILIARY 1-1P-30A-BRK - NEW SPECIAL PURPOSE OUTLET FOR RADIO RACK UPS 1-2P-15A-BRK - SURGE SUPPRESSOR (D-15/17) 3-1P-15A-BRKS - SPARES 2-1P-20A-BRKS - SPARES SPACES</p>
<p><b>NOTES:</b></p> <ul style="list-style-type: none"> <li>PROVIDE NEW TYPED PANEL DIRECTORIES.</li> <li>RELOCATE EXISTING BREAKERS, CONDUIT/WIRING, EXTEND CONDUIT/WIRING, ETC. TO ALLOW INSTALLATION OF NEW BREAKERS.</li> <li>MATCH EXISTING BREAKERS AS CLOSE AS POSSIBLE.</li> </ul>	

DEMOLITION NOTES	
<p>(1) UNLESS OTHERWISE NOTED, ITEMS SHOWN ARE TO BE REMOVED. ALL ITEMS DESIGNATED FOR REMOVAL SHALL BE TURNED OVER TO THE OWNER AND RECEIPT OBTAINED FOR SAME. ANY MATERIALS OR EQUIPMENT THAT THE OWNER DOES NOT WANT SHALL BE REMOVED FROM THE SITE.</p> <p>(2) WHERE DEMOLITION RESULTS IN THE REMOVAL OF DEVICES IN MID SPAN OF A WIRE AND CONDUIT RUN, EXTENDING TO DEVICES OR EQUIPMENT TO REMAIN IN SERVICE, THE CONDUIT SHALL BE REROUTED AROUND THE DEMOLITION AREA AND WIRING SHALL BE PROVIDED TO AN ALTERNATE SOURCE TO REINSTATE POWER TO THE REMAINING DEVICES OR EQUIPMENT.</p> <p>(3) ALL REDUNDANT WIRING SHALL BE REMOVED FROM SOURCE OF POWER TO END DEVICE.</p> <p>(4) ALL EXPOSED REDUNDANT CONDUIT, FLEXES AND 'BX' SHALL BE COMPLETELY REMOVED, WHERE CONDUITS BECOME CONCEALED, CUT THE CONDUITS FLUSH WITH THE WALL SURFACE AND PATCH AND FINISH THE OPENING IN THE WALL.</p> <p>(5) CONFIRM THE EXTENT OF DEMOLITION ON SITE PRIOR TO BIDDING. ALL EQUIPMENT AND MATERIALS MAY NOT NECESSARILY BE SHOWN ON THE DRAWINGS.</p> <p>(6) WHEREVER REQUIRED, EXISTING CONDUITS TO REMAIN SHALL BE PROVIDED WITH CODE COMPLIANT SUPPORTS AND FASTENERS AS MAY BE NECESSARY.</p> <p>(7) ITEMS INDICATED 'ER' SHALL BE PROTECTED FROM DAMAGE DURING CONSTRUCTION. CLEAN OFF ALL DEBRIS AND DUST PRIOR TO TURN-OVER.</p> <p>(8) ITEMS INDICATED 'RL' SHALL BE REMOVED, PROTECTED FROM DAMAGE AND REINSTALLED.</p>	<p>(9) ANY ITEMS DAMAGED DUE TO CONSTRUCTION SHALL BE REPLACED TO SATISFACTION OF ARCHITECT.</p> <p>(10) VERIFY DEMOLITION REQUIREMENTS ON SITE. NOT ALL EQUIPMENT IS SHOWN.</p> <p>(11) MAINTAIN EXISTING ELECTRICAL. RE-FEED EXISTING ELECTRICAL DUE TO DEMOLITION.</p> <p>(12) EXISTING ELECTRICAL SHOWN IN DASHED LIGHT LINES FOR RECEPTACLES, TELEPHONE &amp; DATA OUTLETS TO REMAIN AS-IS UNLESS OTHERWISE NOTED.</p> <p>(13) EXISTING FLUSH MOUNTED POWER PANELS 'A', 'B' AND 'C' ARE TO REMAIN AS-IS. SEE 'REVISED POWER RISER DIAGRAM - 200AMP, 120/240 VOLTS, 1 PHASE, 3-WIRE' ON ELECTRICAL DRAWING No. E-02.</p> <p>(14) EXISTING SURFACE MOUNTED FLEXES/BX'S TO BE REMOVED AND MADE SAFE.</p> <p>(15) EXISTING DATA AND TELEPHONE CABLING ON FLOOR TO BE RE-INSTALLED IN NEW TWO (2) CHANNEL NON-METALLIC BASETRACK TO FEED NEW TELEPHONE AND DATA OUTLETS IN NEW BASETRACK. SEE REVISED LAYOUT ON DRAWING No. E-02. REMOVE SHORT PIECE OF WIREWAY CHANNEL FROM WALL.</p> <p>(16) EXISTING LOW VOLTAGE TRANSFORMER (TR) FOR BUILDING DOORBELL/CHIME SYSTEM MOUNTED ON TOP OF SURFACE MOUNTED DUPLEX RECEPTACLE. RELOCATE LOW VOLTAGE TRANSFORMER (TR) TO WASHROOM #106. SEE DRAWING No. E-02 FOR NEW LOCATION.</p> <p>(17) SEE 'REVISED POWER RISER DIAGRAM - 200AMP, 120/240 VOLTS, 1 PHASE, 3-WIRE' ON ELECTRICAL DRAWING No. E-02.</p>



**PARTIAL BASEMENT FLOOR PLAN - ELECTRICAL DEMOLITION LAYOUT** (1) (2) (3) (4) (5) (6) (7) (8) (9) (10) (11) (12)  
SCALE: 1:50

Issues/Revisions			
No.	Description	Date	By
1	Issued for Tender	Dec.9/2015	D.O.

Client

Project

VIKING			
Scale	As Noted	Designed By	D.O./D.S.
Project No.	1557	Drawn By	D.O./D.S.
Date	December 2015	Checked By	D.O.

Drawing Title  
**PARTIAL BASEMENT & FIRST FLOOR PLAN - ELECTRICAL DEMOLITION, SYMBOLS and NOTES**

Drawing No.