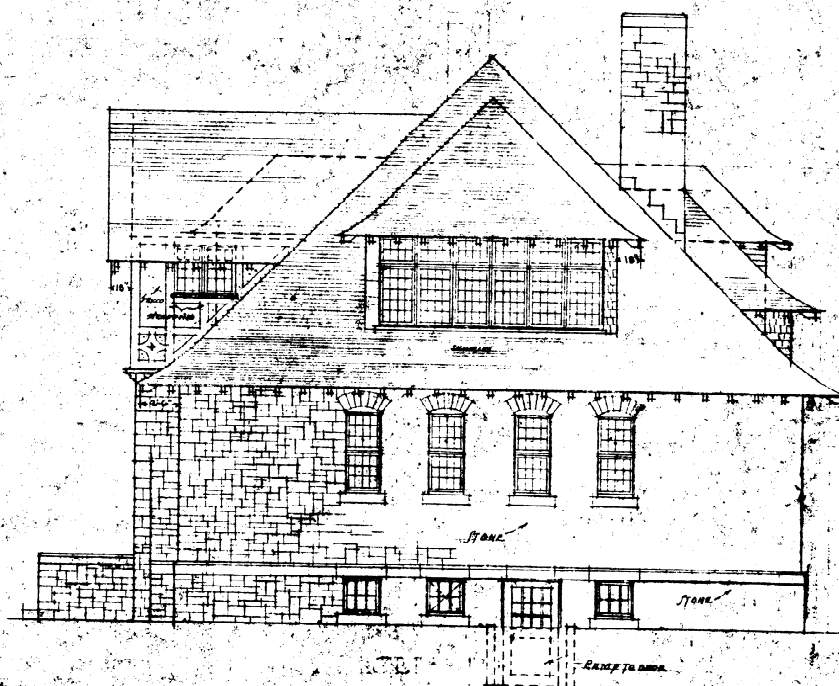
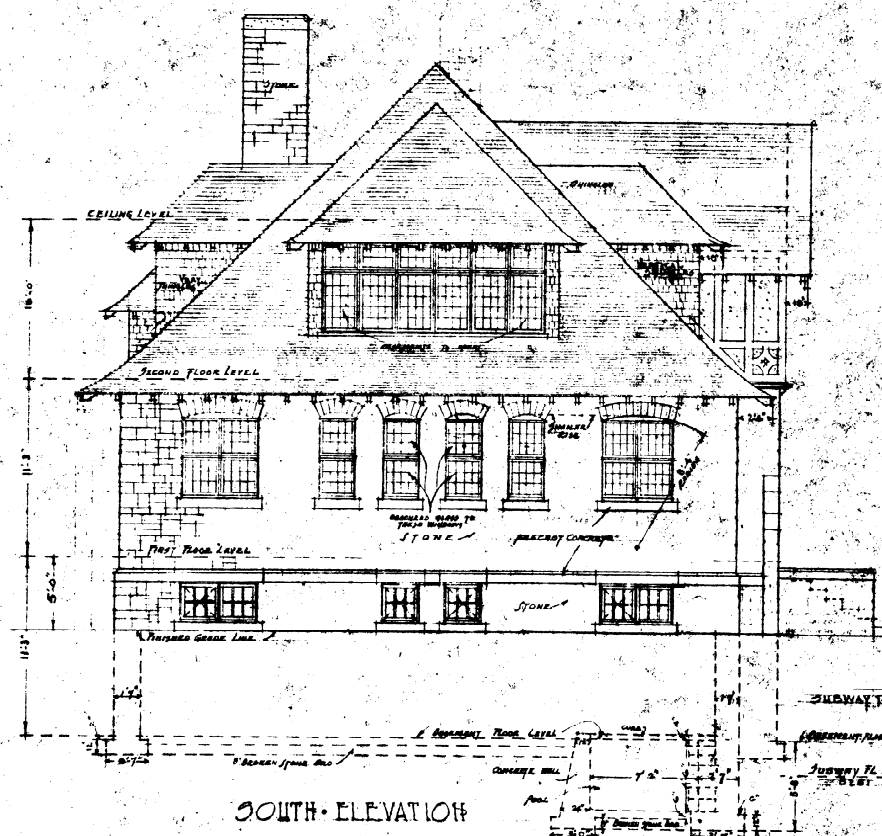


6

PROPOSED NEW BATH HOUSE AT UPPER HOT SPRINGS - BANFF NATIONAL PARK

SCALE: 1/4 INCH = 1 FOOT



NOTE:

ALL WINDOWS TO FIRST & SECOND FLOORS TO HAVE LARGEST LIGHTS

SIZE OF GLASS EXCEPT WHERE OTHERWISE INDICATED

(SEE NOTE ELEVATIONS) FOR REDUCED GLASS WHERE SHOWN

DOOR LIGHT PANEL TO BE THE SAME SIZE AS WINDOW FOR LARGEST LIGHTS

ELC. SYMBOLS TO BE PLACED AT TOP OF EACH DOOR & WINDOW

ALL TRANSOMS HINGED AT BOTTOM TO OPEN IN (EXCEPT OVER DOORS)

DOOR & WINDOW HINGED AT BOTTOM TO OPEN INWARDS

ALL INDICATED ON ELEVATIONS BY DOTTED DIMENSION LINES

ALL HINGES OF WINDOWS UNLESS OTHERWISE NOTED TO BE PINNED

ARCHITECTURAL
NATIONAL PARKS OF
DEPARTMENT OF THE
INTERIOR - CANADA
REVISED 12