

Figure 27. Acoustic data on bottom stability at fixed transducer sites, 1993-1995. Source: Rukavina (2000).

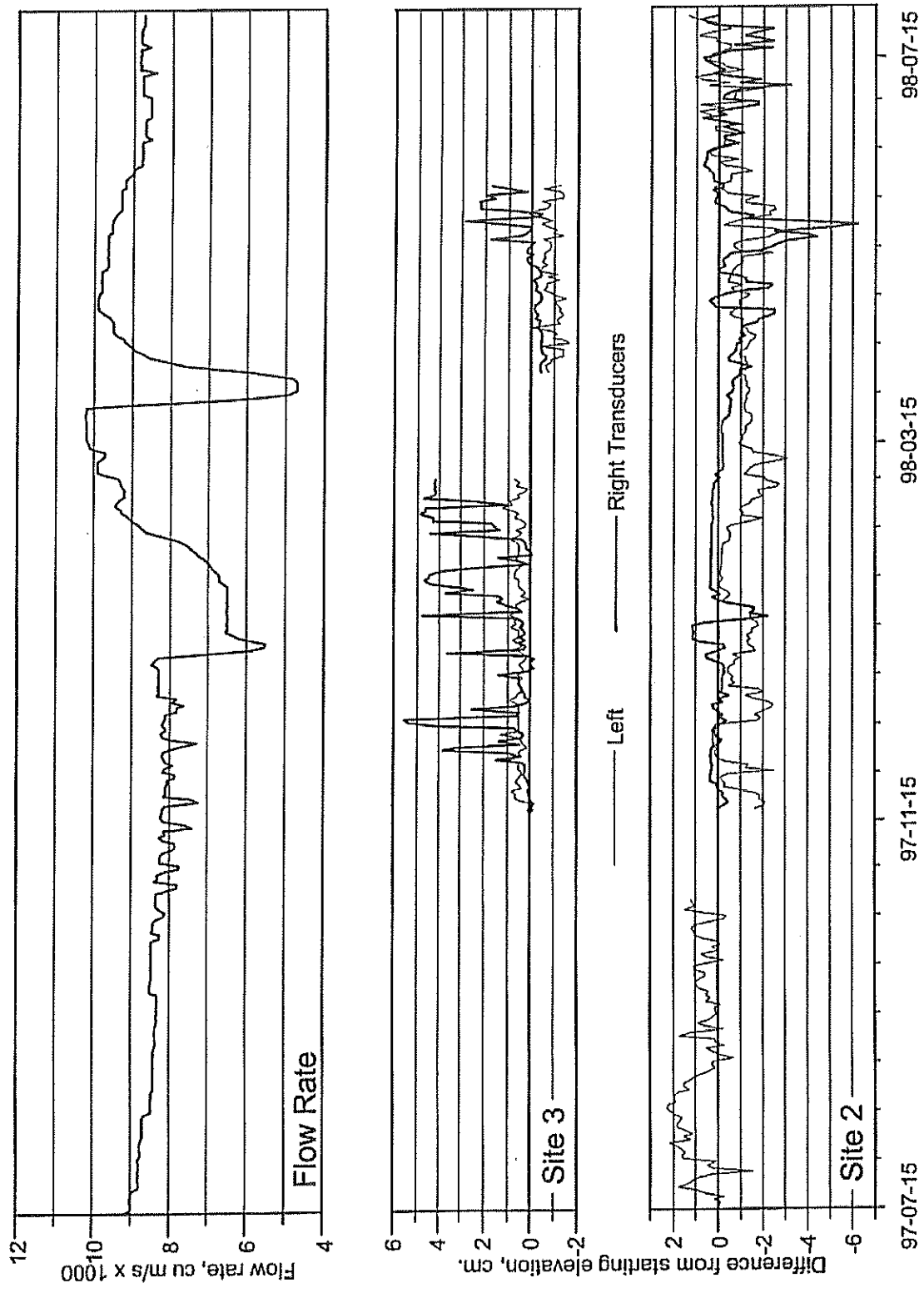


Figure 28. Datalogger records (fixed transducer sites 2 and 3) vs. St. Lawrence River flow rate. Source: Rukavina (2000).

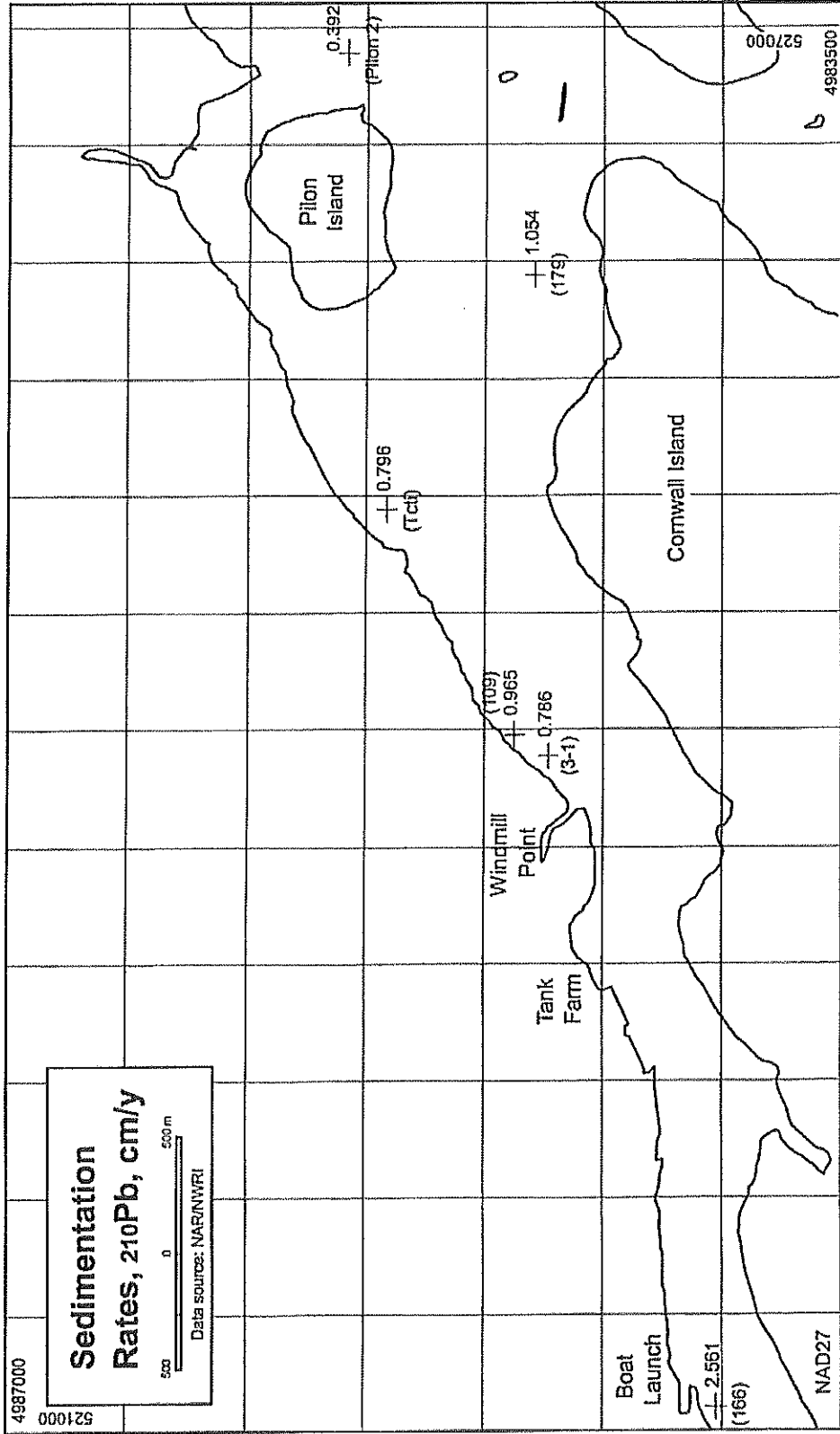


Figure 29. Sedimentation rates, ^{210}Pb dating (cm/y). Station numbers/names are shown in parentheses. Source: Rukavina (2000).

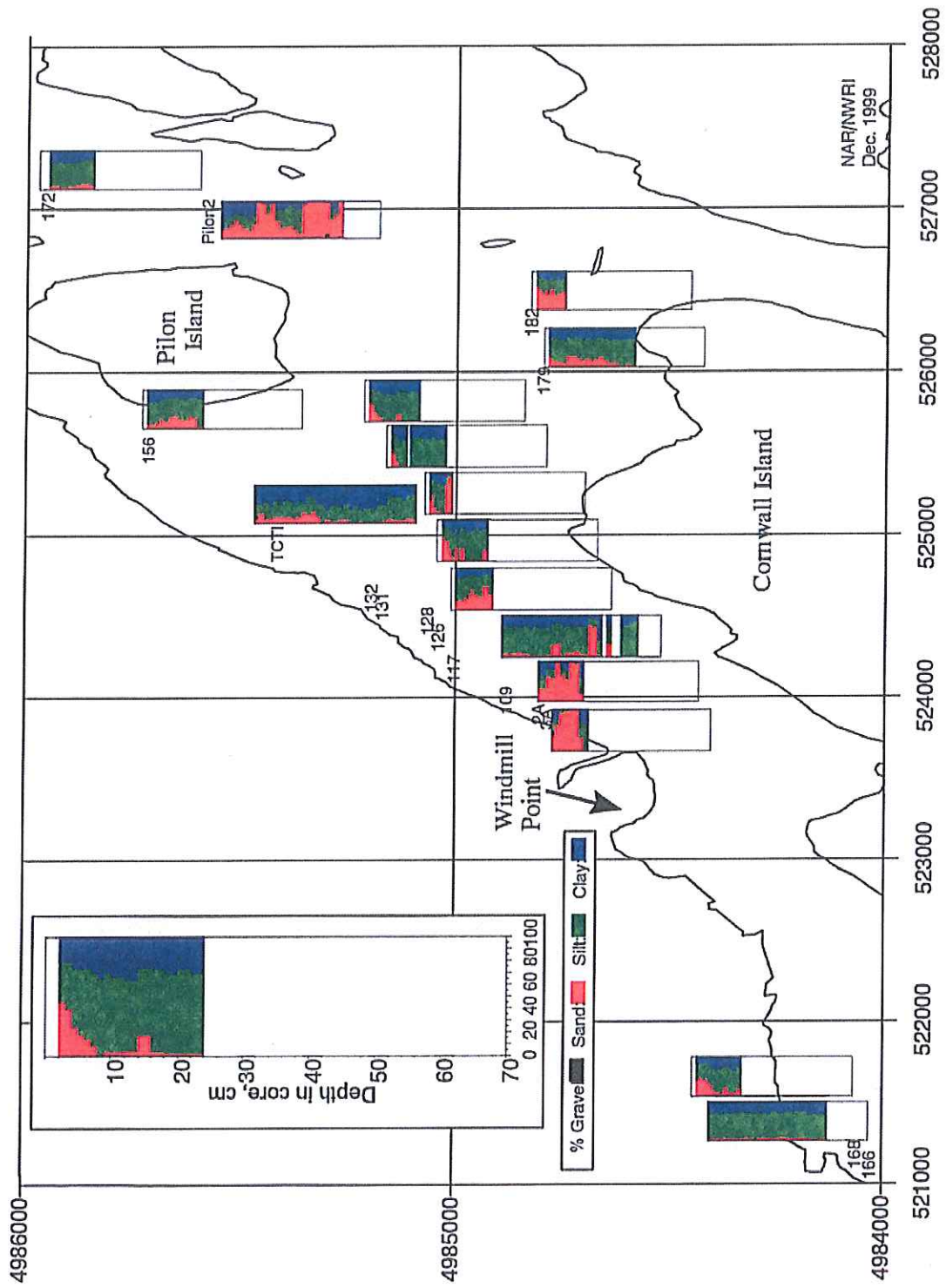


Figure 30. Grain size profiles through 1996/1997 sediment cores. Station numbers and locations shown. Source: Rukavina (2000).

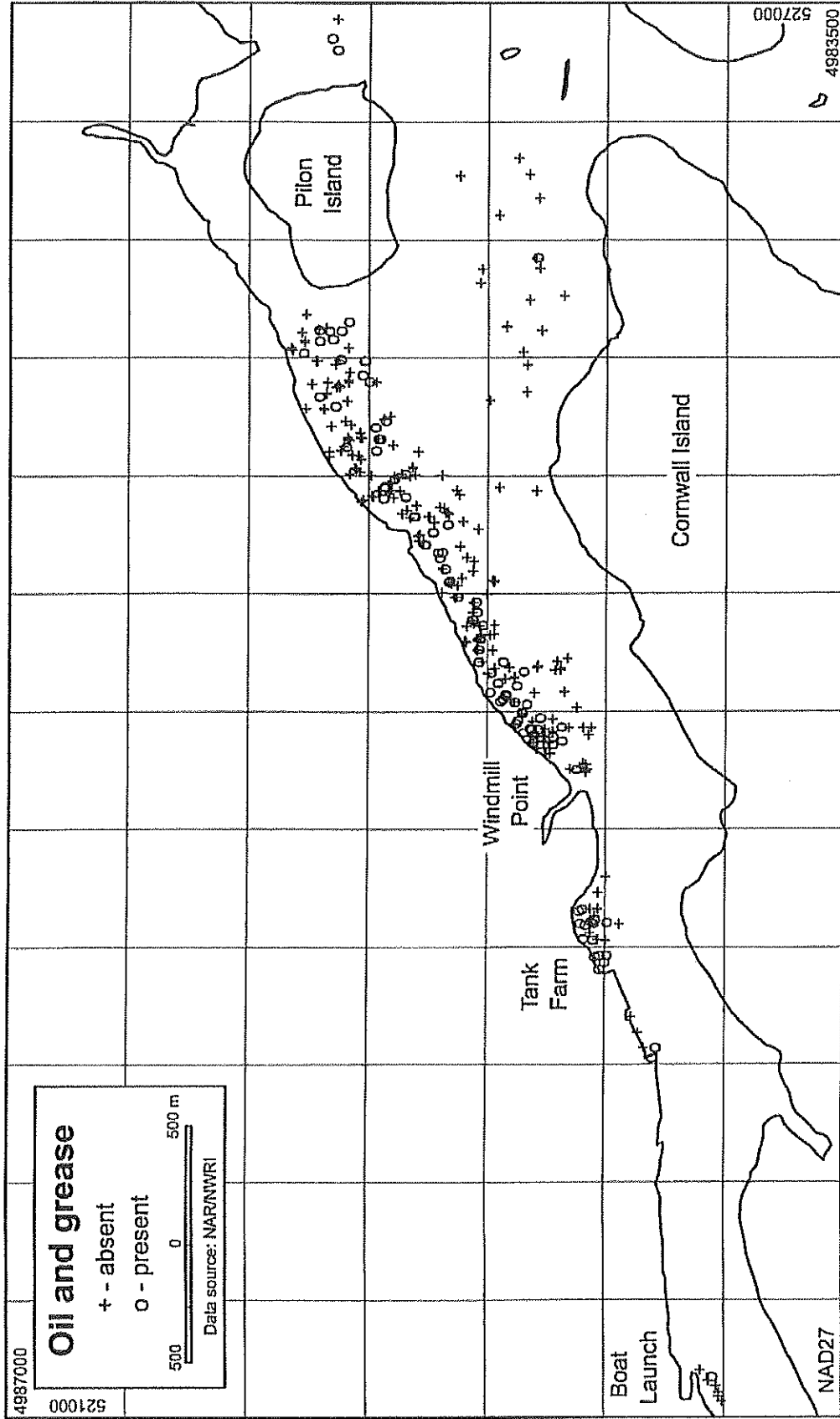


Figure 31. Occurrence of oil and grease. Source: Rukavina (2000).

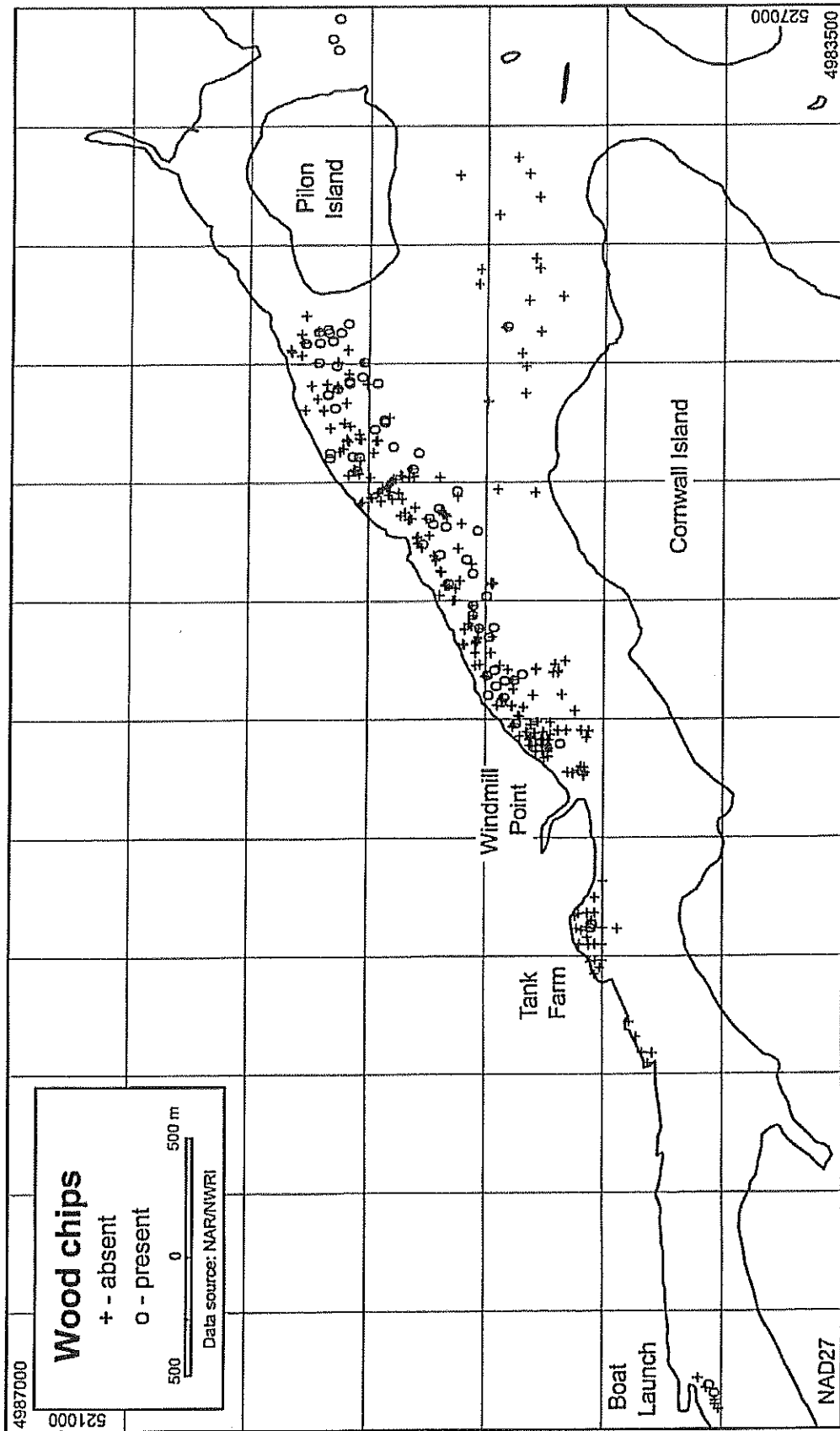


Figure 32. Occurrence of wood chips. Source: Rukavina (2000).

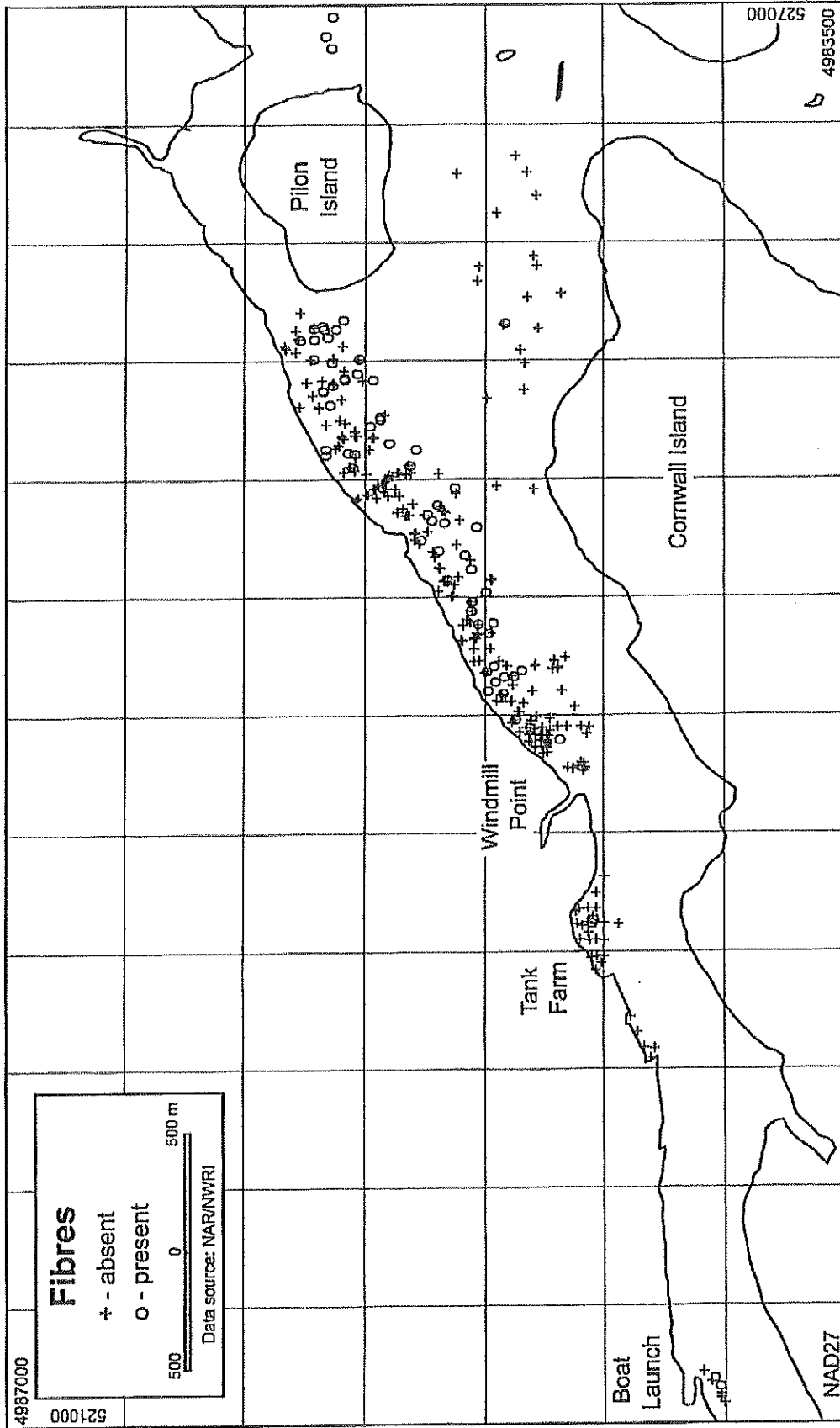


Figure 33. Occurrence of fibres. Source: Rukavina (2000).

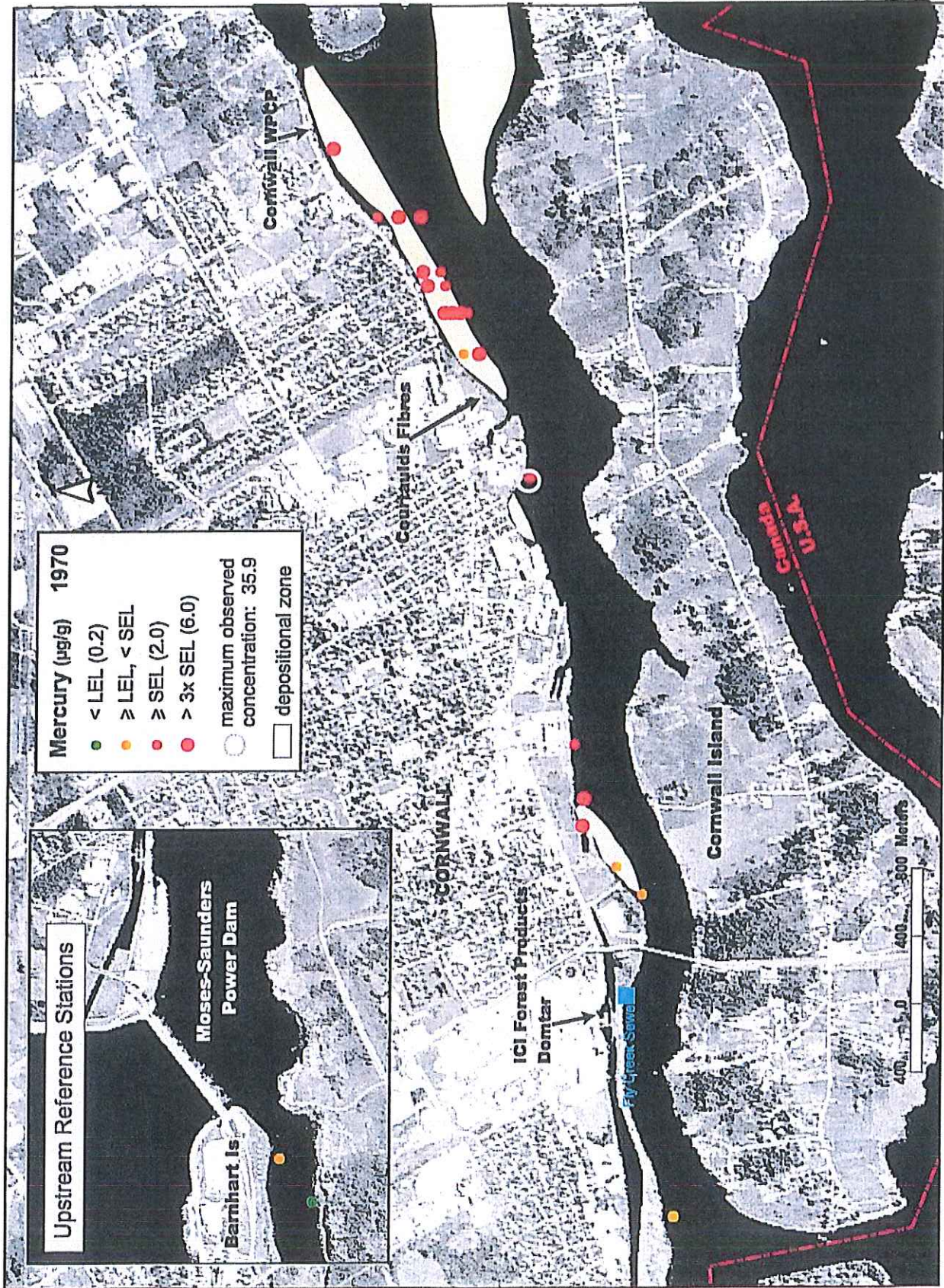


Figure 34. Total mercury in bottom sediment (surface grab sample), 1970 (MOE 1979). Sampling station locations are approximate.



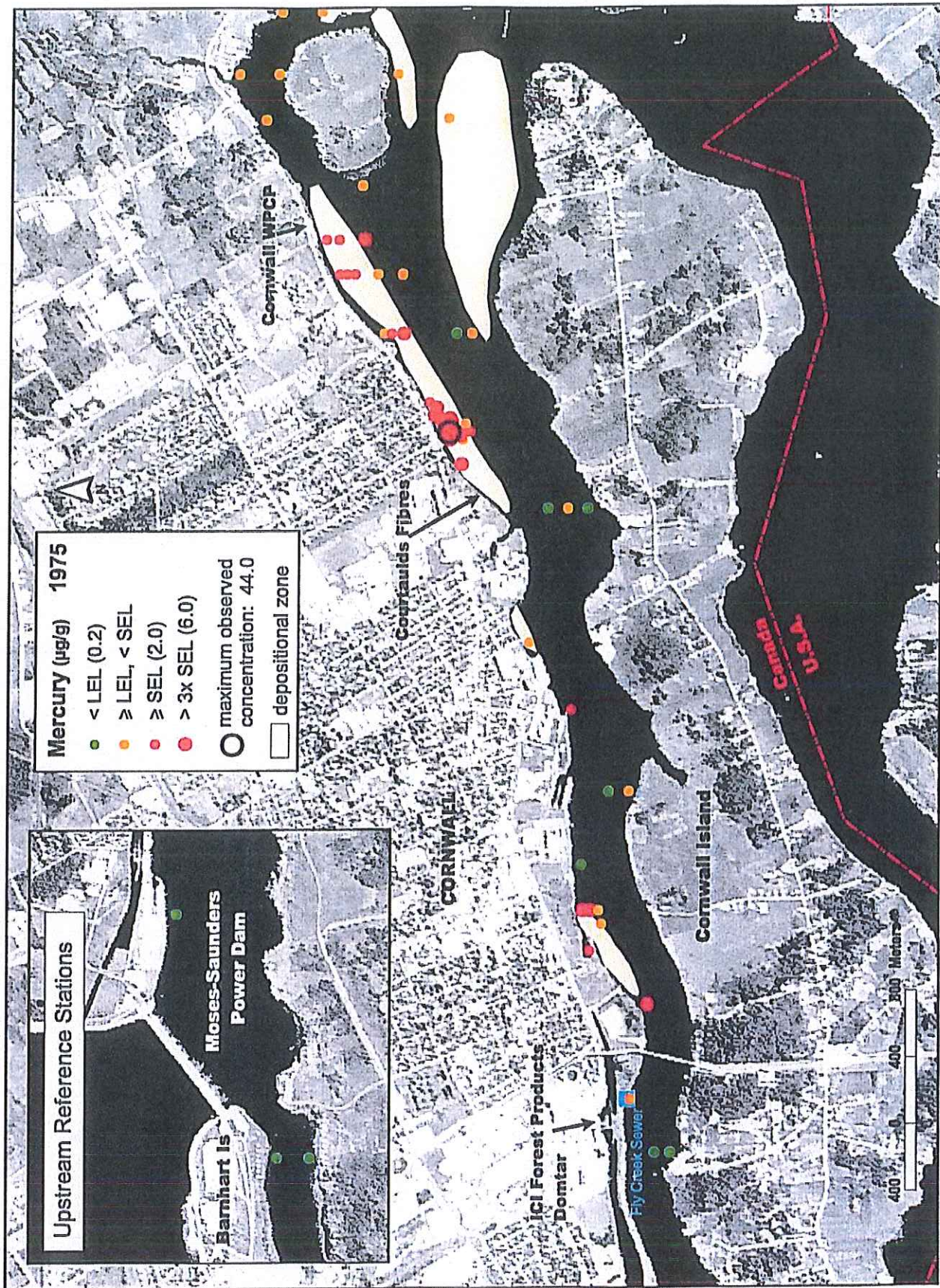


Figure 35. Total mercury in bottom sediment (surface grab sample), 1975 (MOE 1979). Sampling station locations are approximate.

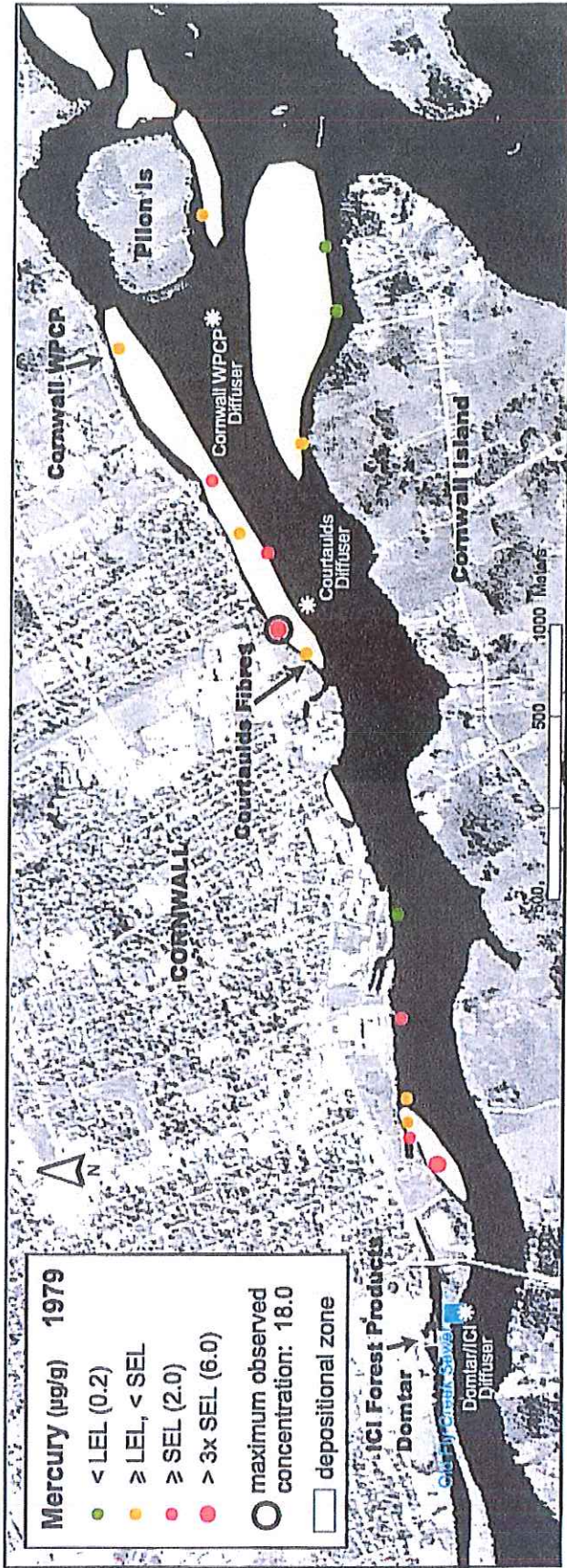


Figure 36. Total mercury in bottom sediment (surface grab sample), 1979 (Kauss et al. 1988). Sampling station locations are approximate.

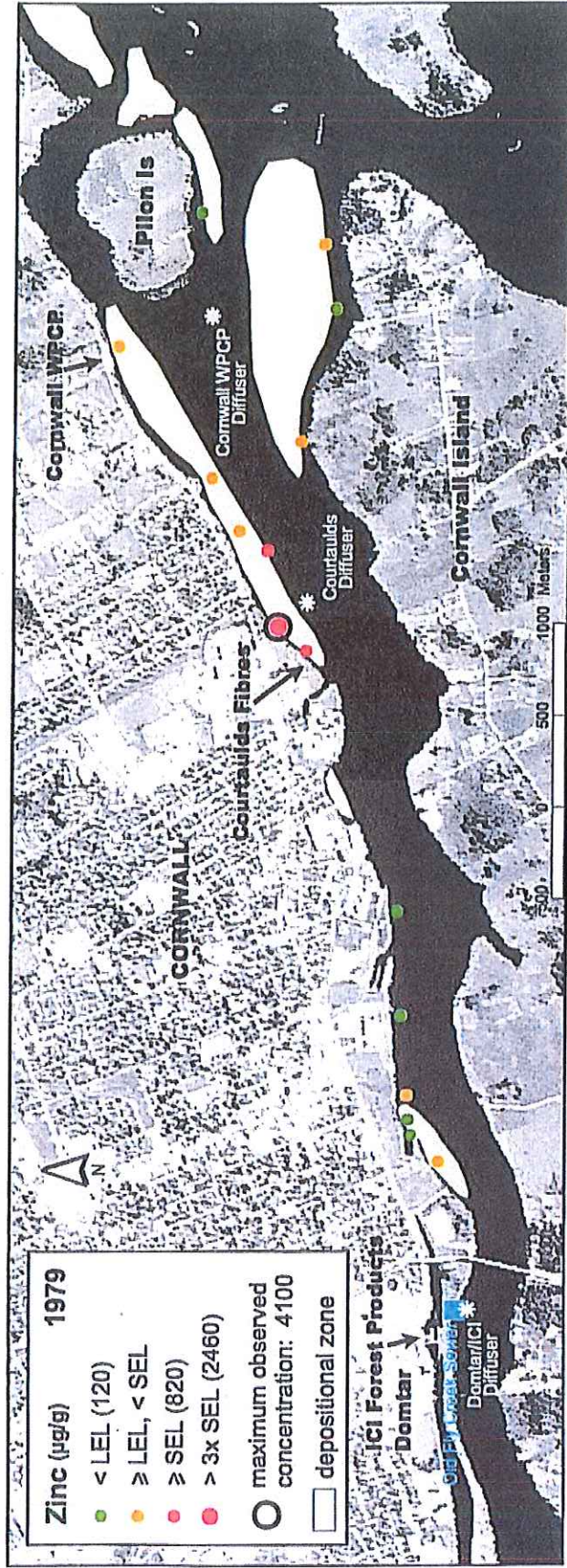


Figure 37. Zinc in bottom sediment (surface grab sample), 1979 (Kauss et al. 1988). Sampling station locations are approximate.

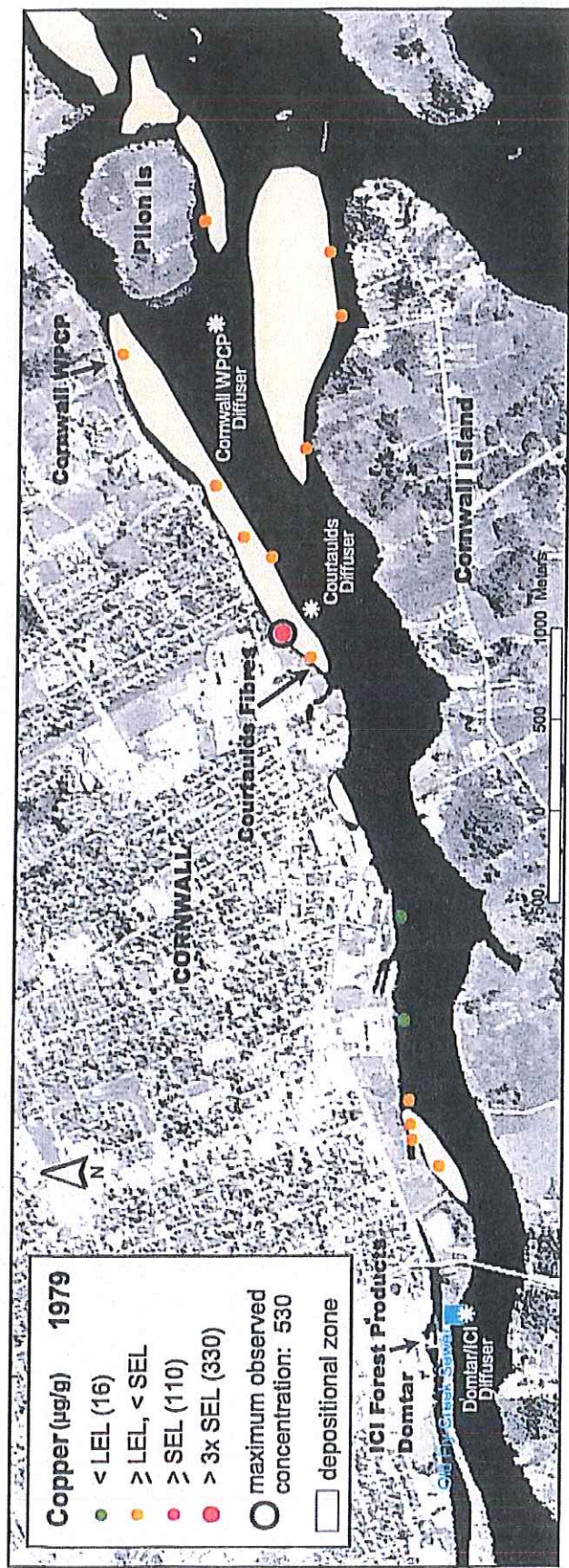


Figure 38. Copper in bottom sediment (surface grab sample), 1979 (Kauss et al. 1988). Sampling station locations are approximate.

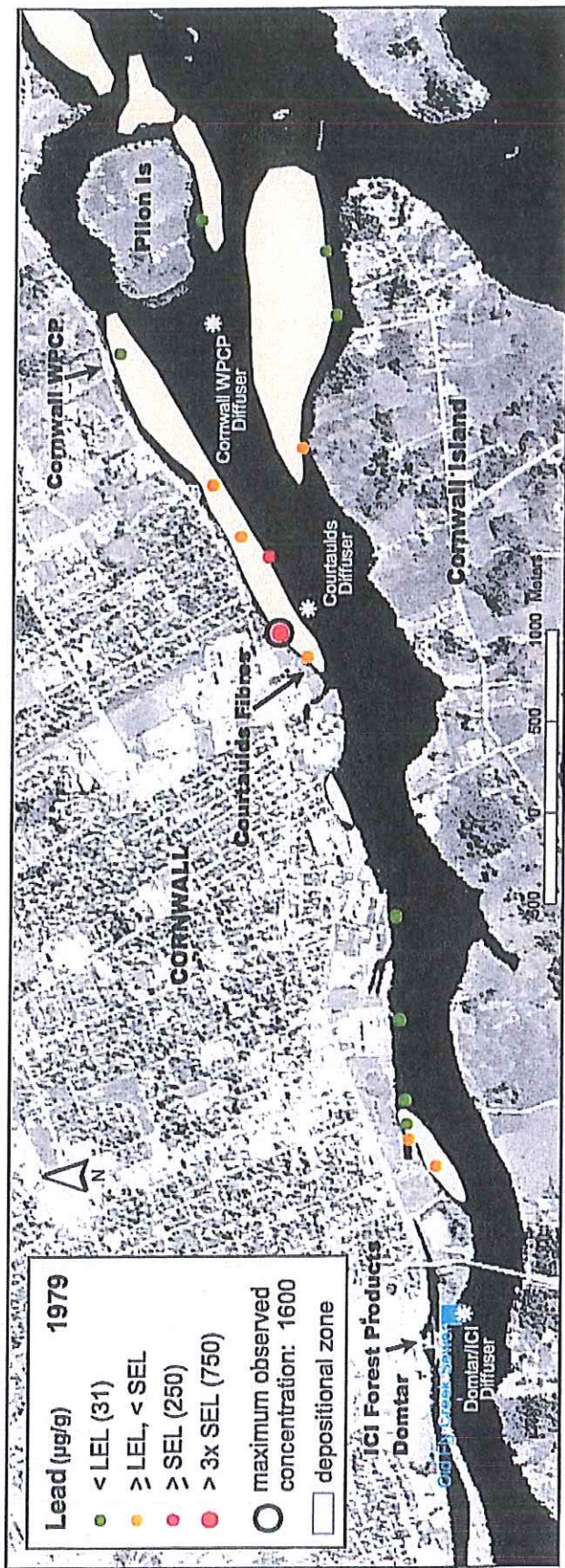


Figure 39. Lead in bottom sediment (surface grab sample), 1979 (Kauss et al. 1988). Sampling station locations are approximate.

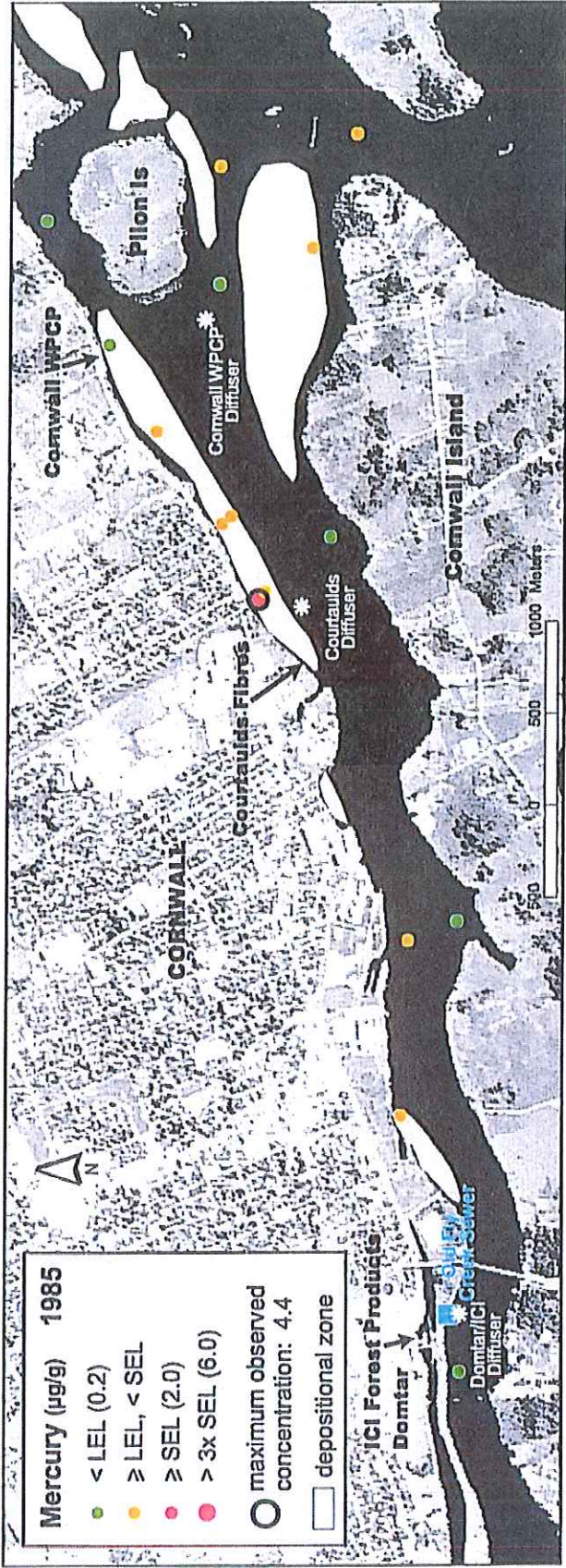


Figure 40. Total mercury in bottom sediment (surface grab sample), 1985 (Anderson 1990). Sampling station locations are approximate.

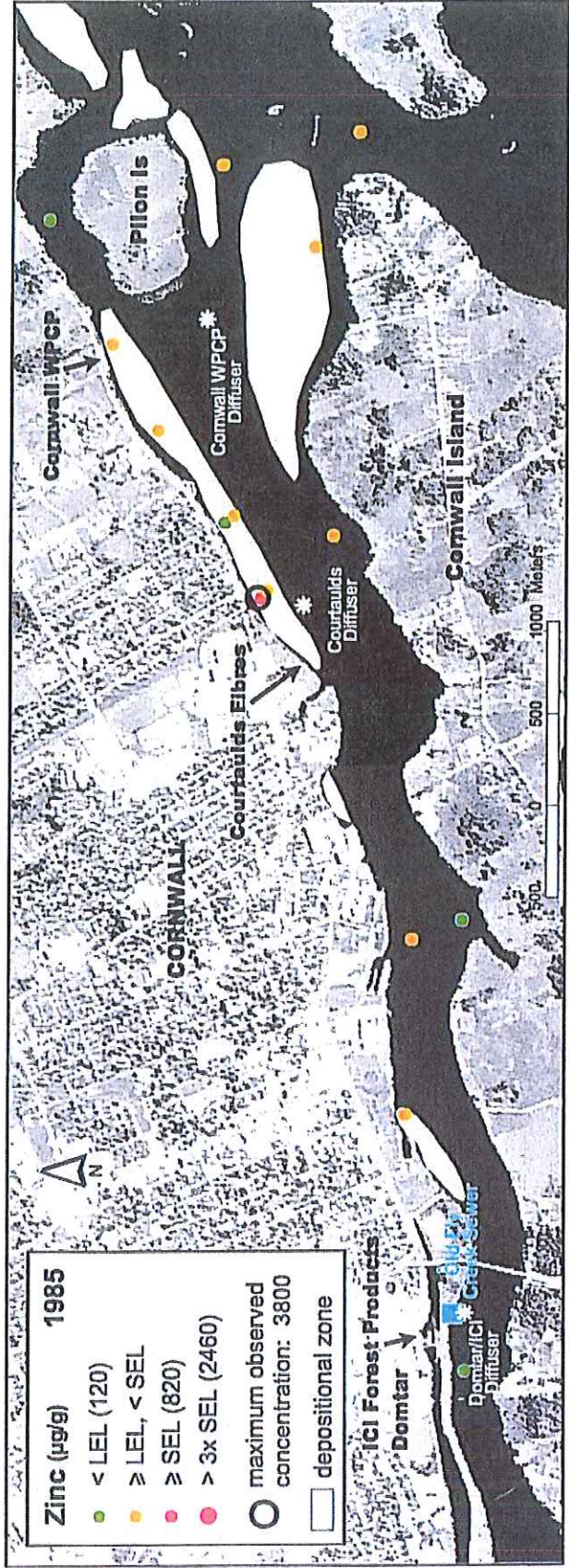


Figure 41. Zinc in bottom sediment (surface grab sample), 1985 (Anderson 1990). Sampling station locations are approximate.

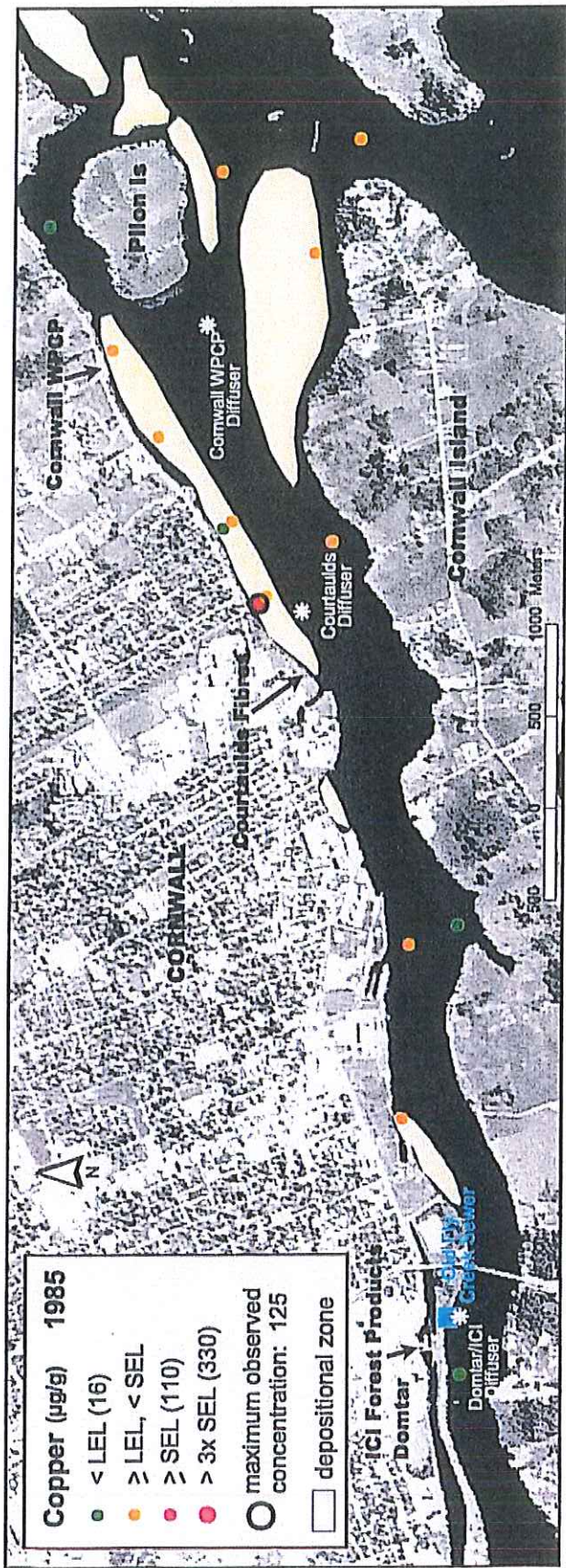


Figure 42. Copper in bottom sediment (surface grab sample), 1985 (Anderson 1990). Sampling station locations are approximate.

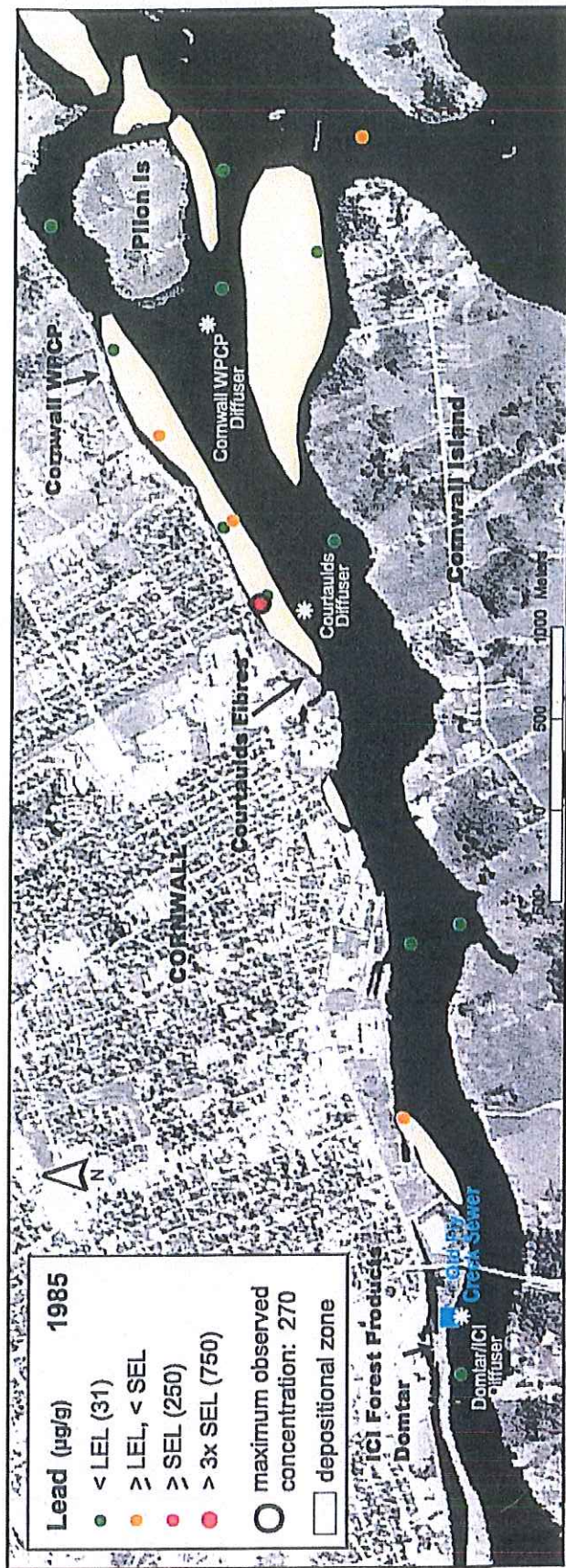


Figure 43. Lead in bottom sediment (surface grab sample), 1985 (Anderson 1990). Sampling station locations are approximate.

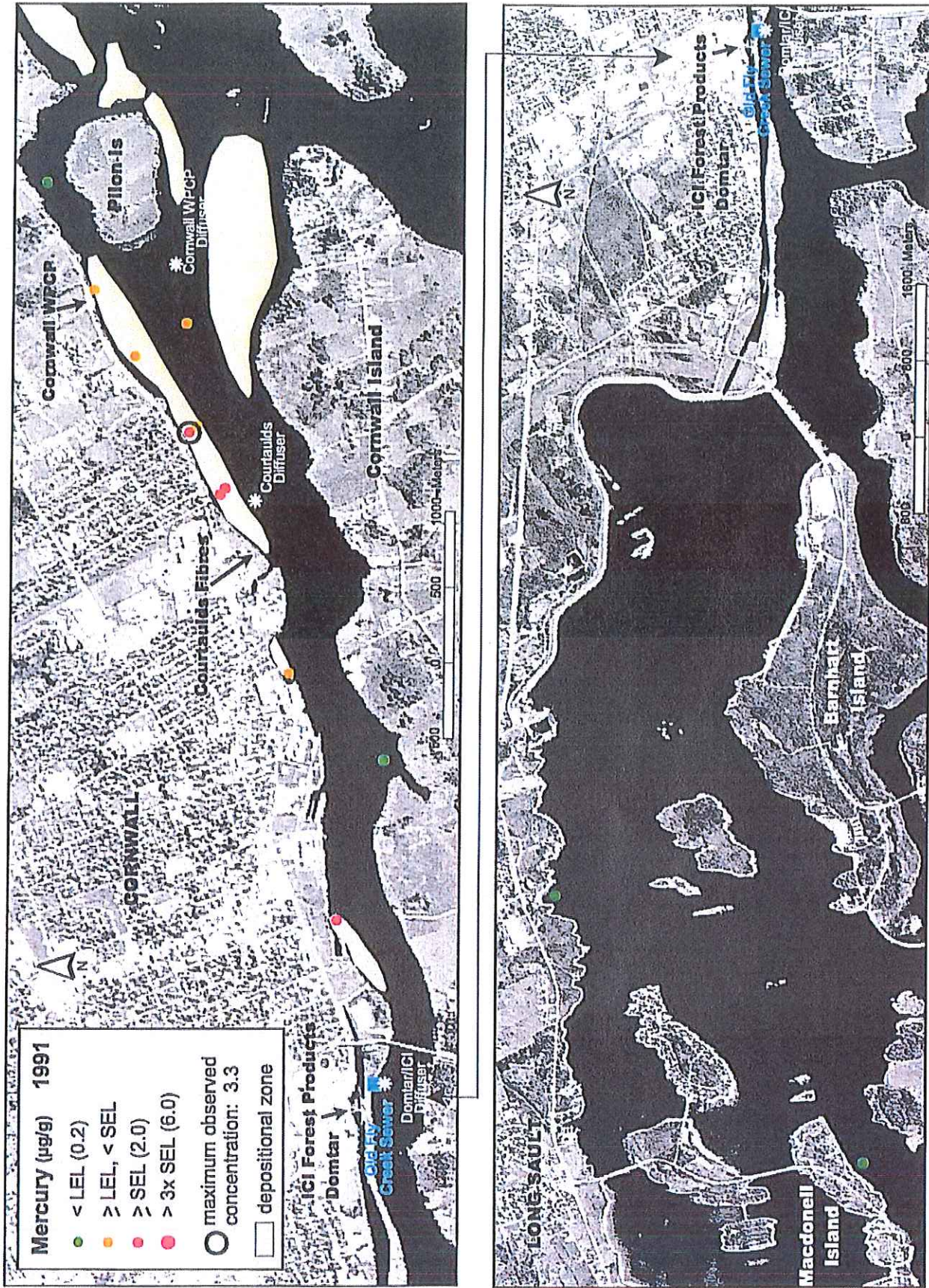


Figure 44. Total mercury in bottom sediment (surface grab sample), 1991 (Richman 1994). Sampling station locations are approximate. Downstream reference stations shown above; upstream reference stations shown below.

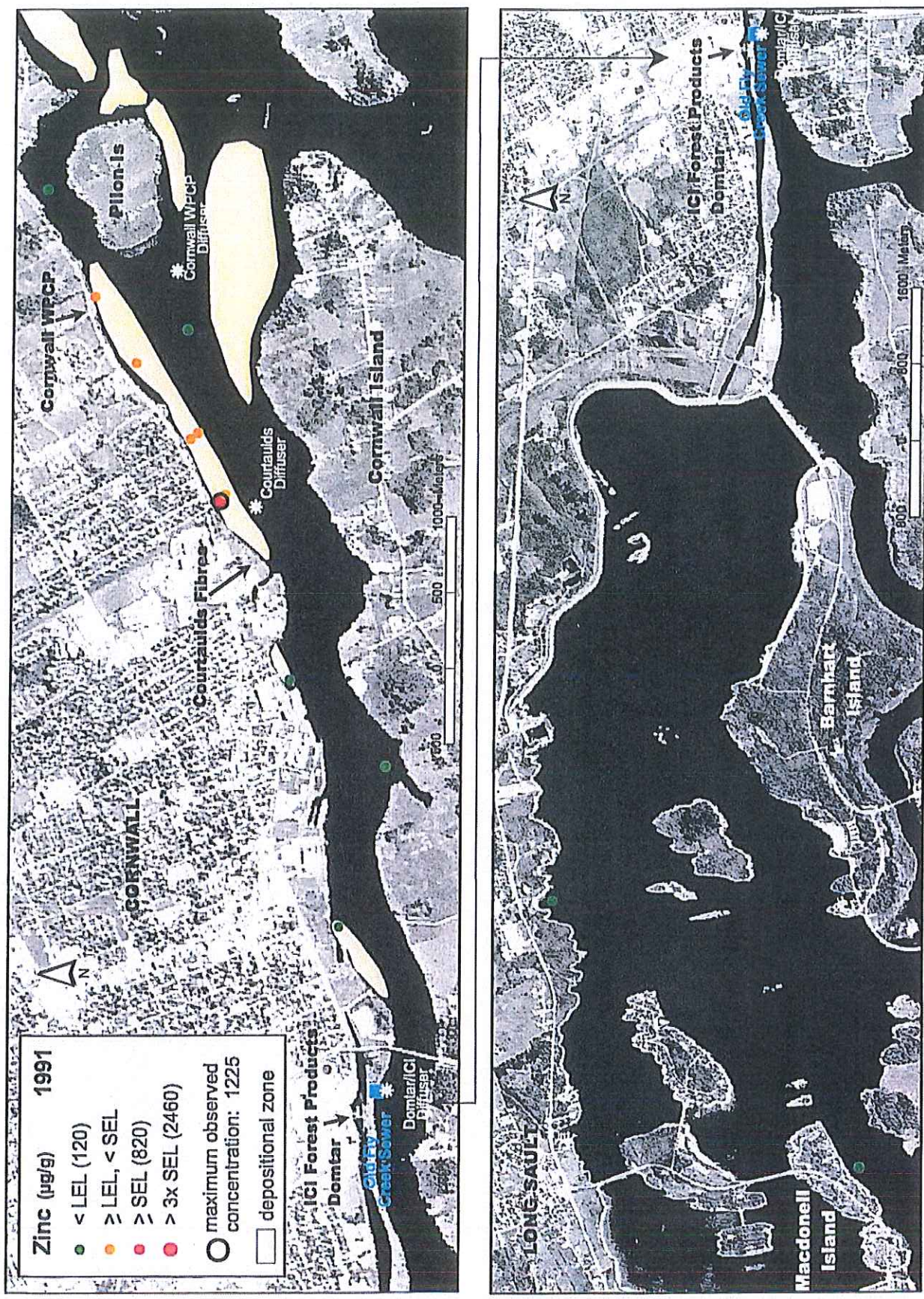


Figure 45. Zinc in bottom sediment (surface grab sample), 1991 (Richman 1994). Sampling station locations are approximate. Downstream stations shown above; upstream reference stations shown below.

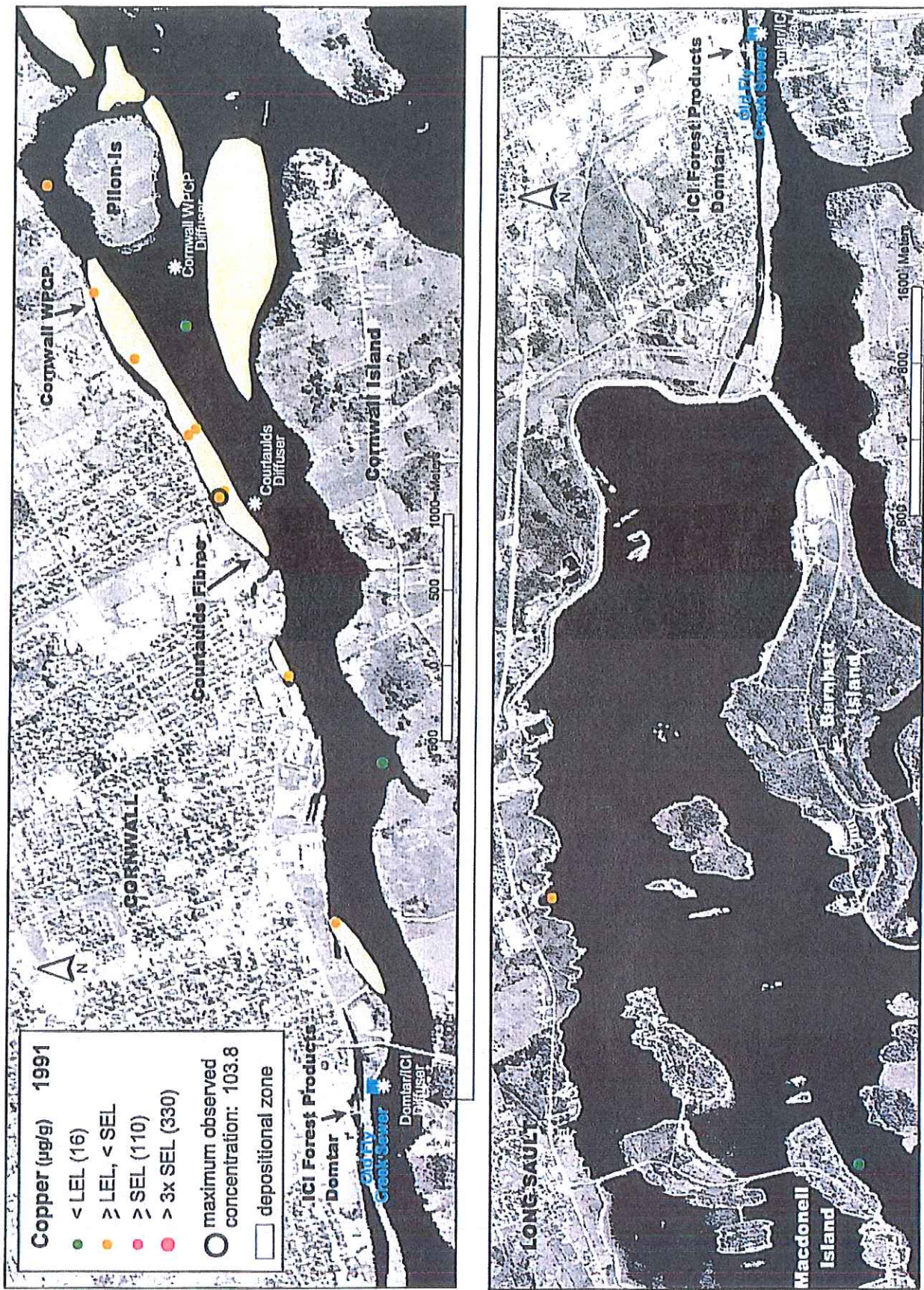


Figure 46. Copper in bottom sediment (surface grab sample), 1991 (Richman 1994). Sampling station locations are approximate. Downstream stations shown above; upstream reference stations shown below.

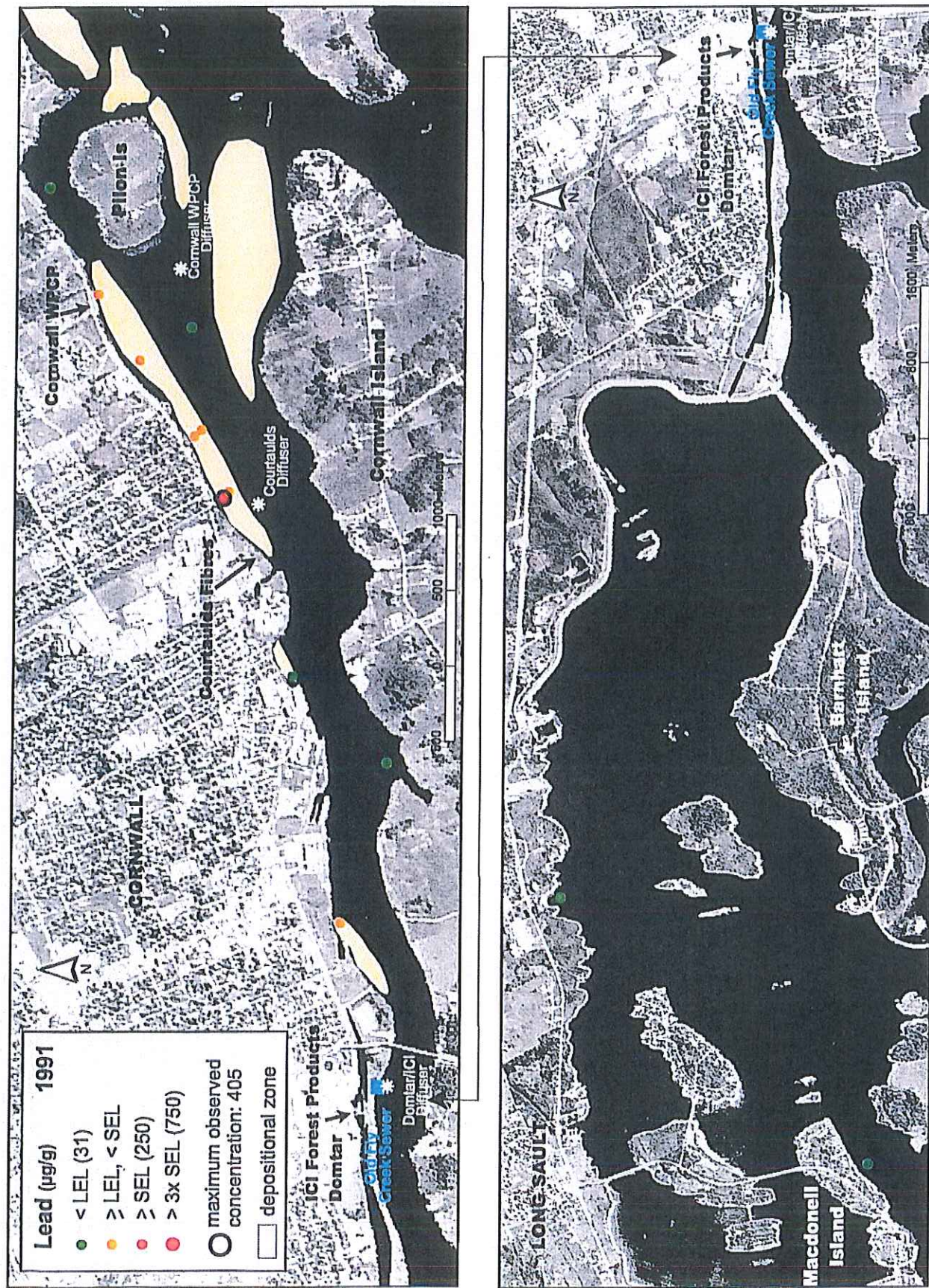


Figure 47. Lead in bottom sediment (surface grab sample), 1991 (Richman 1994). Sampling station locations are approximate. Downstream stations shown above; upstream reference stations shown below.

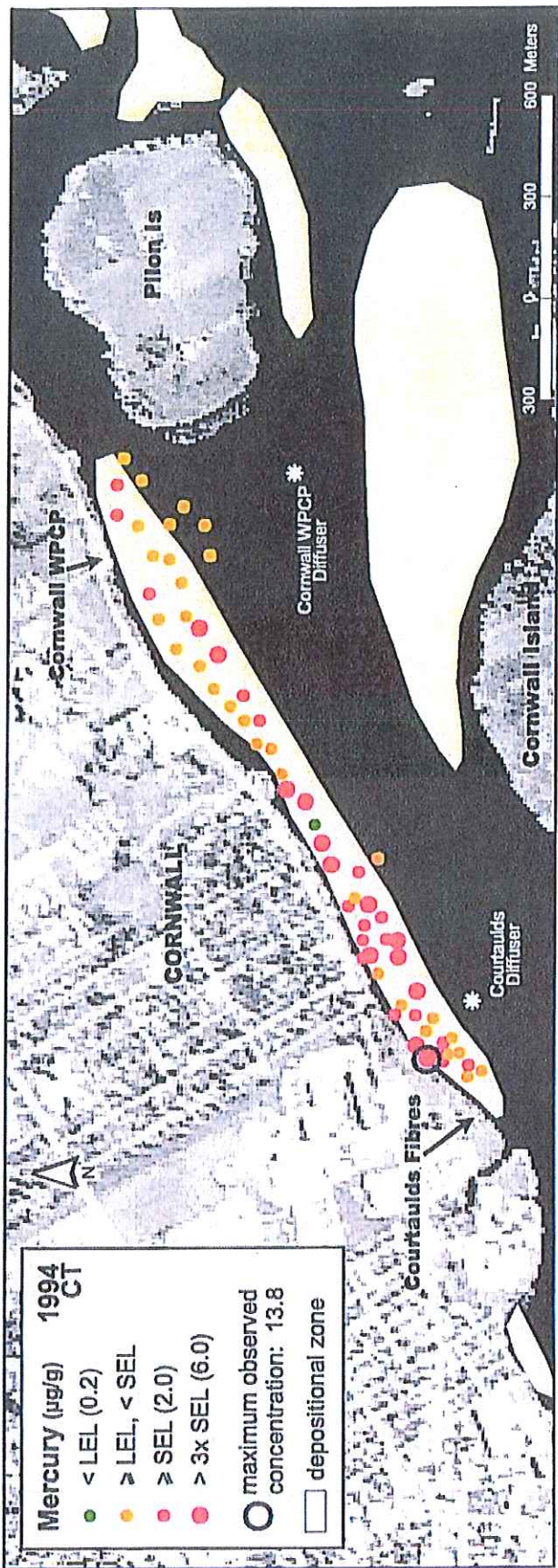


Figure 48. Total mercury in bottom sediment (top 10 cm of core), 1994 (Richman 1996). CT=core top.

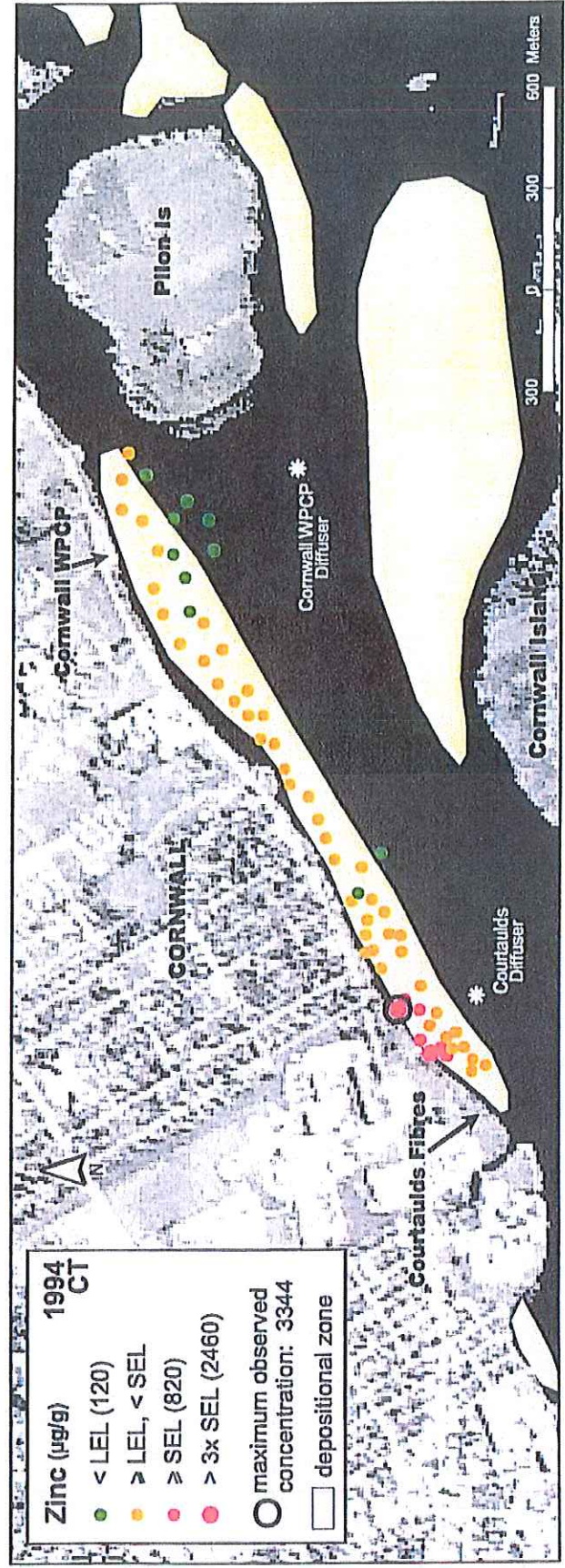


Figure 49. Zinc in bottom sediment (top 10 cm of core), 1994 (Richman 1996). CT=core top.

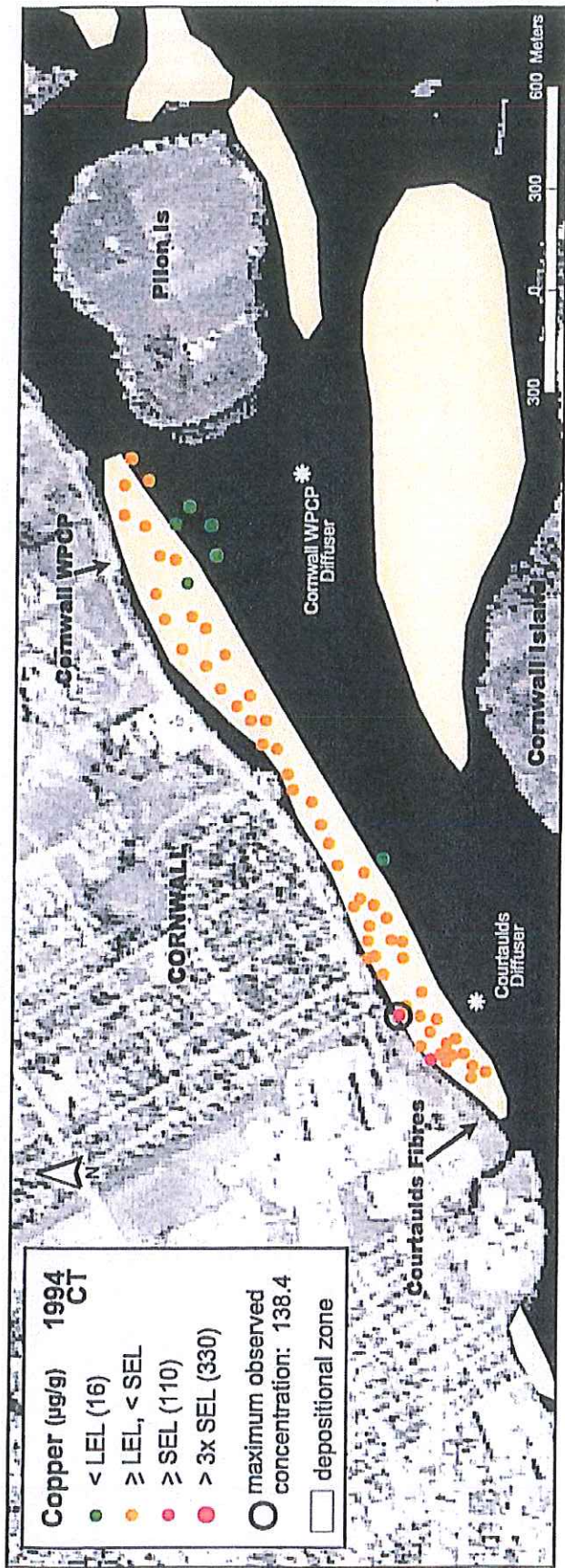


Figure 50. Copper in bottom sediment (top 10 cm of core), 1994 (Richman 1996). CT=core top.

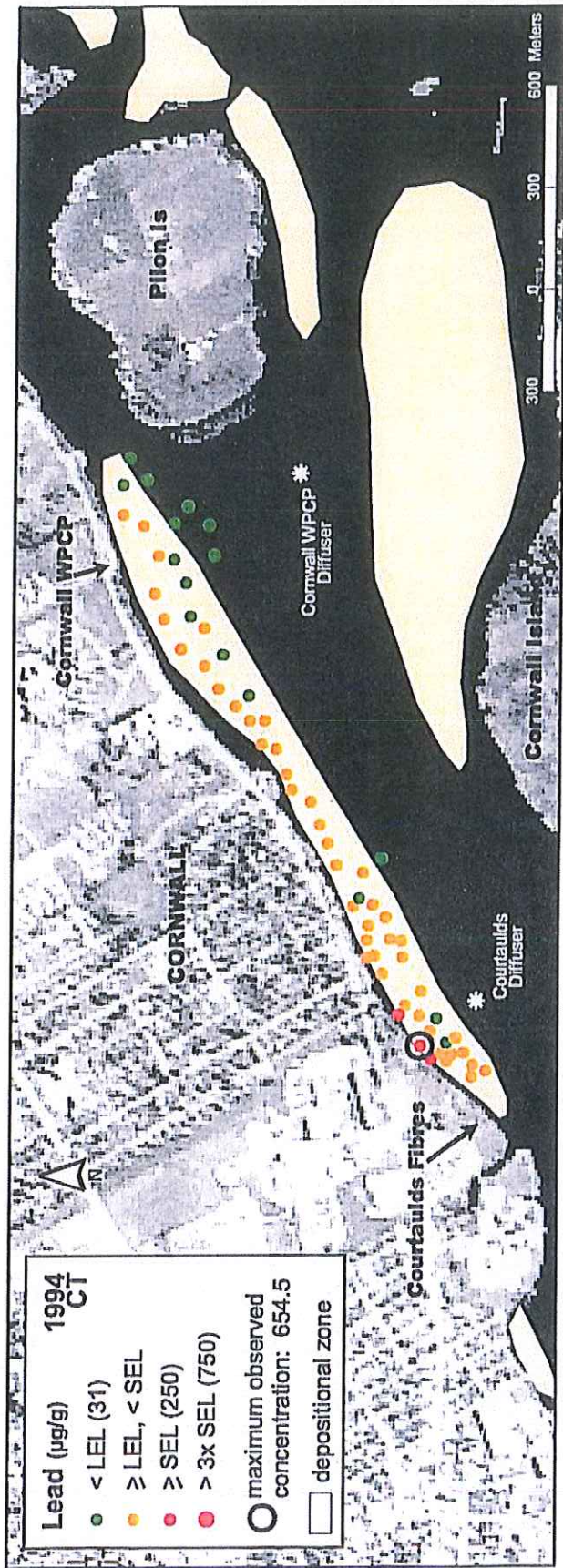


Figure 51. Lead in bottom sediment (top of 10 cm core), 1994 (Richman 1996). CT=core top.