

Figure 1. St. Lawrence River, Ontario to Quebec, with study area outlined in red (above). Enlarged map of Cornwall, Ontario waterfront study area (below).

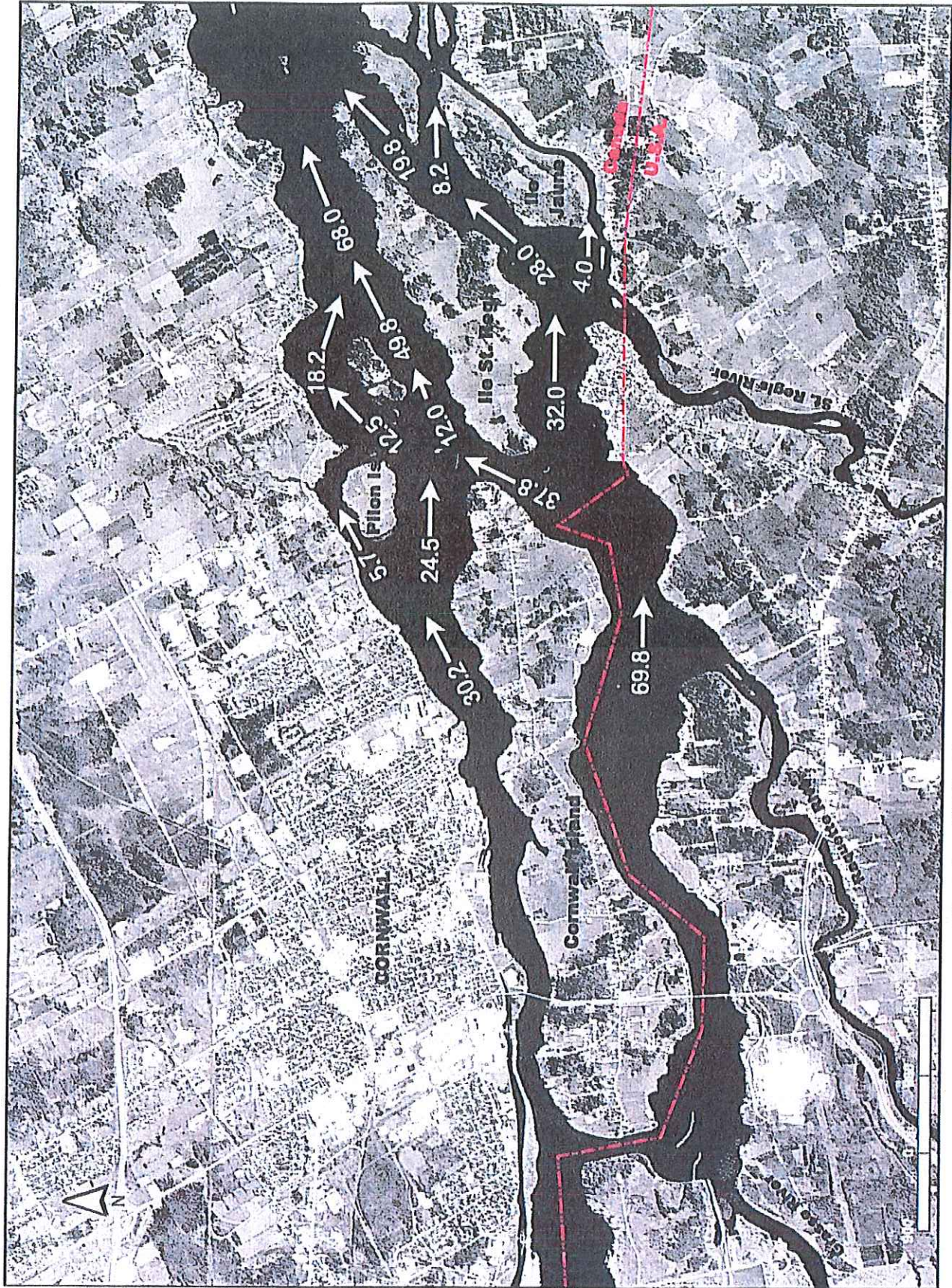


Figure 2. Distribution of flow (% of total). Source: Nettleton (1996).

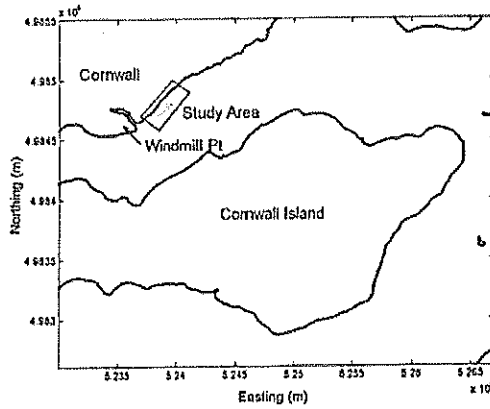


Figure 3. Site map of 1999 currents profile study area. Source: Coastal Ocean Associates (1999).

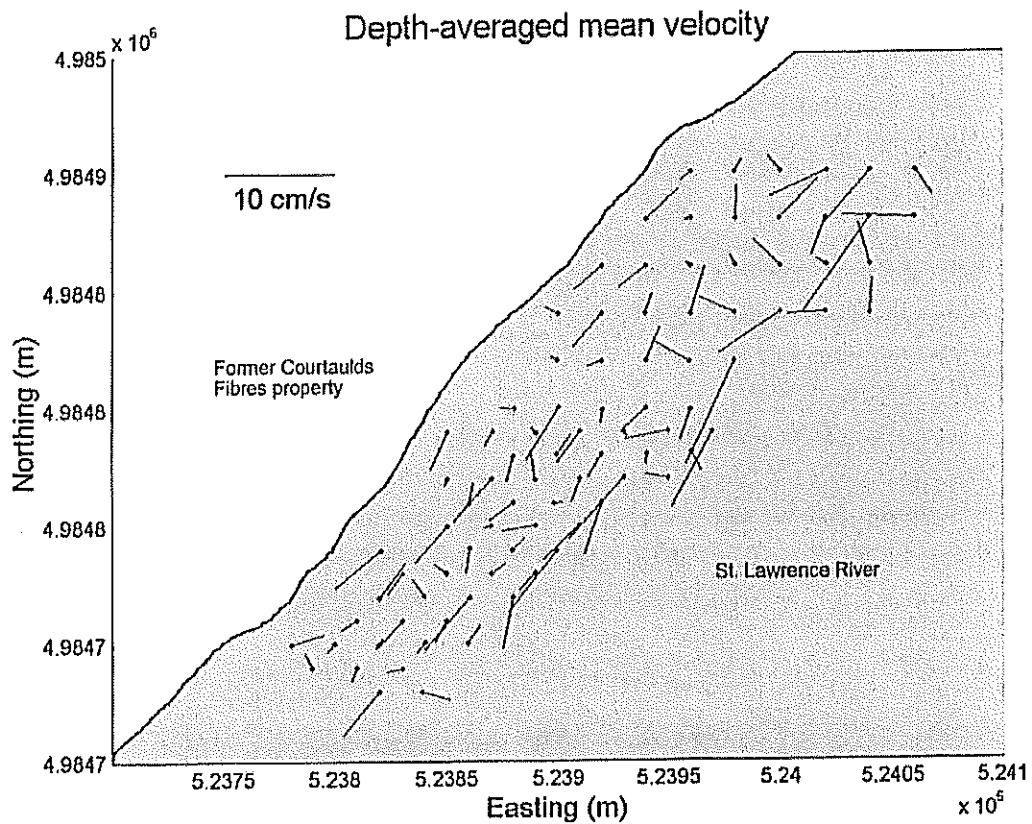


Figure 4. Depth-averaged mean velocity at each Ice hole. Length of line is proportional to velocity of current. Lines are drawn in the direction of flow, with the origin at the dot representing the location of the hole through which acoustic Doppler current profiler (ADCP) readings were taken. Location of study area shown as Inset in Figure 3. Source: Coastal Ocean Associates (1999).

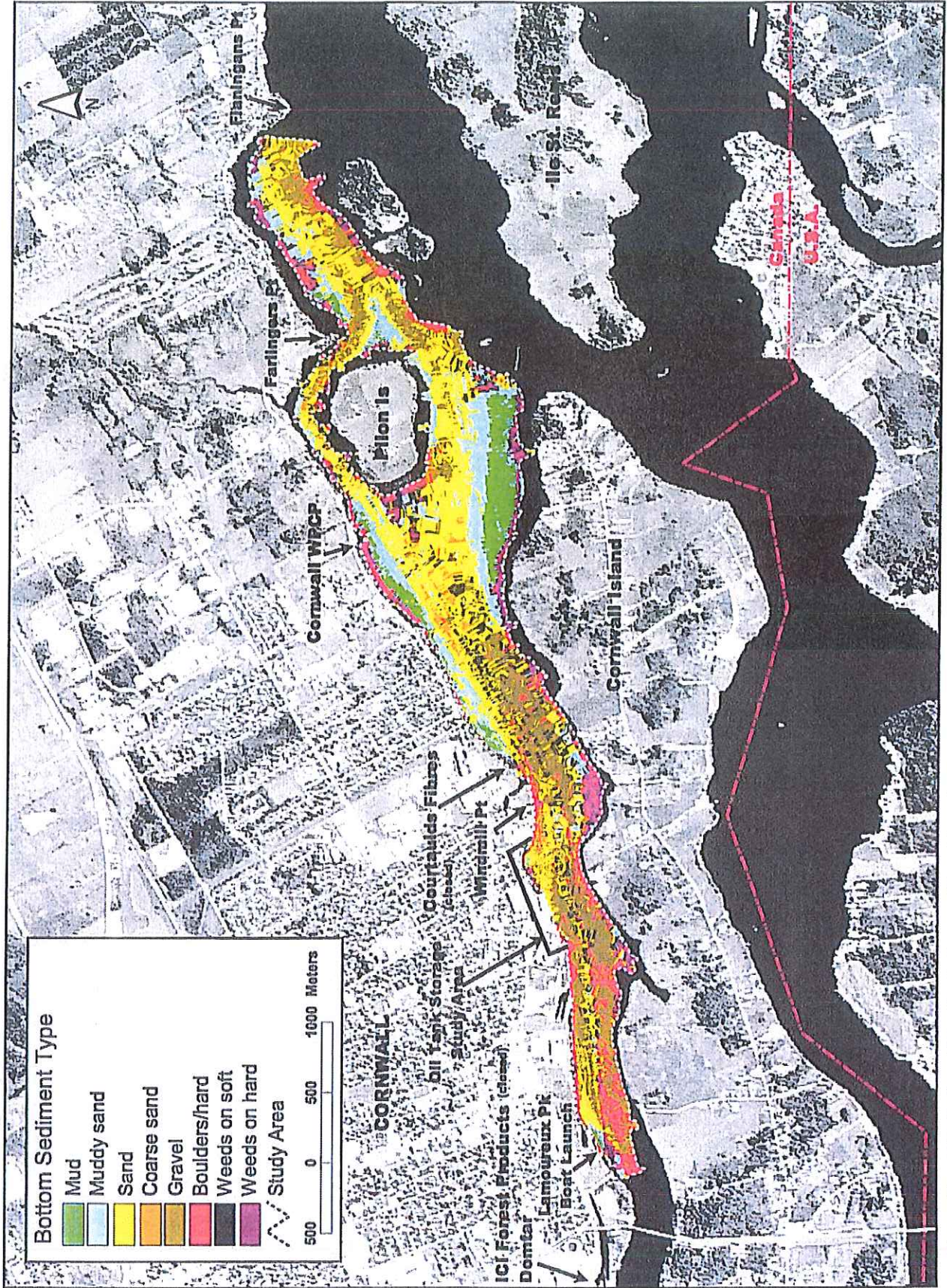


Figure 5. Distribution of RoxAnn bottom sediment type (mud, muddy sand, weeds on soft, sand, coarse sand, gravel, boulders/hard, weeds on hard). Source: Ruktavina (2000).

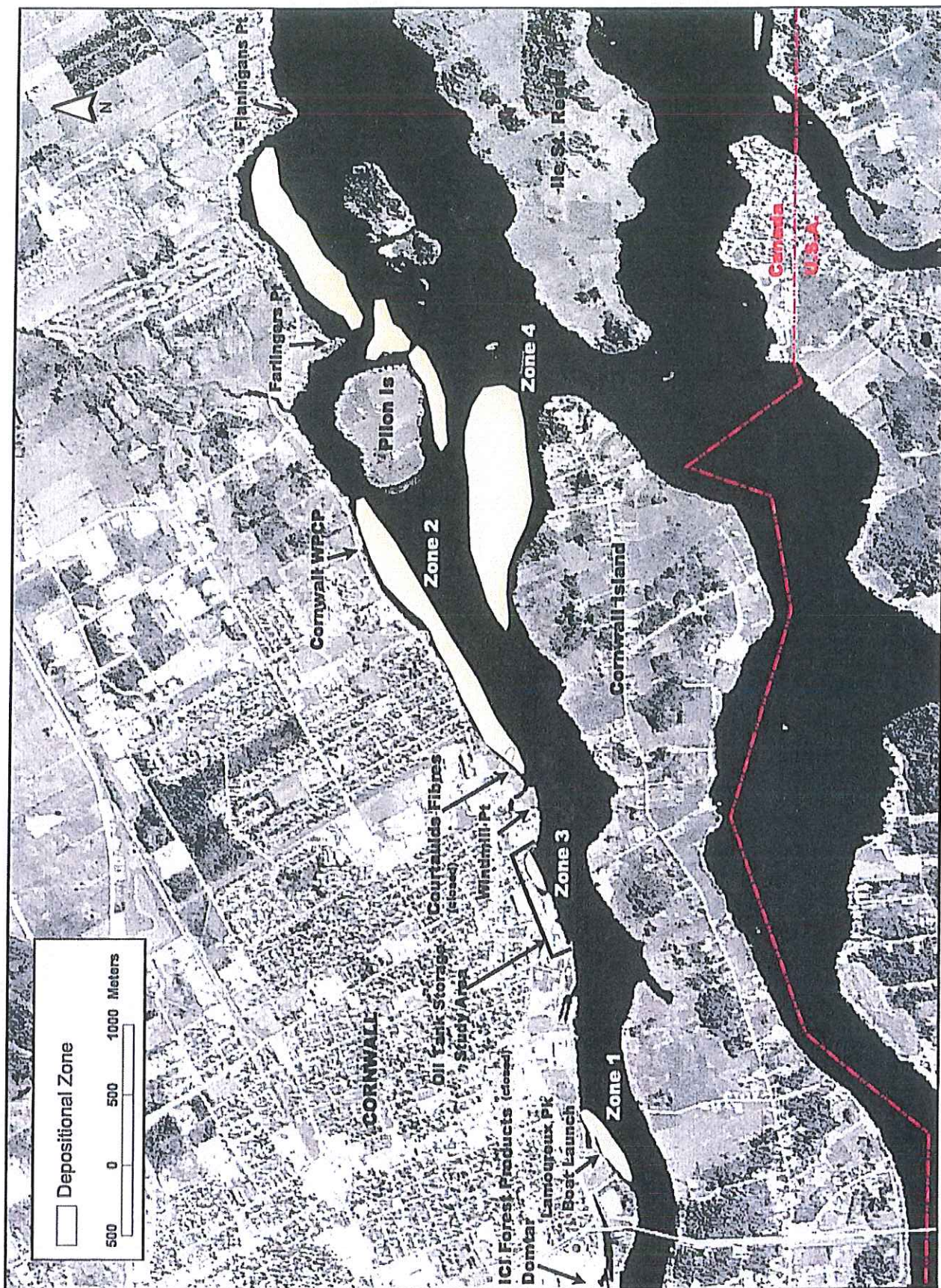


Figure 6. Zones of fine-grained sediment deposition determined by Rukavina (2000).

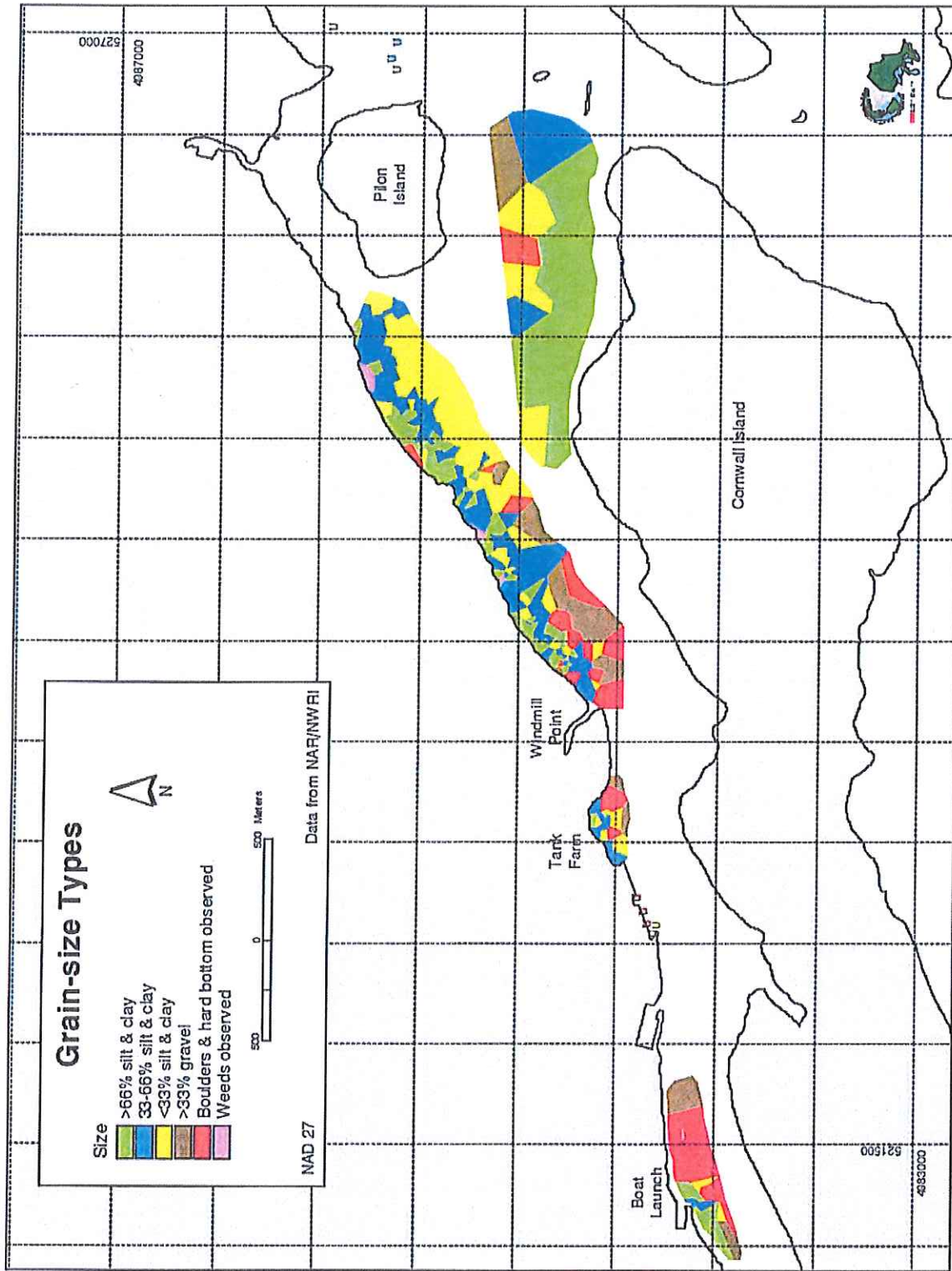


Figure 7. Grain size distribution in study area. Distribution computed by GIS polygon analysis of data from sediment core and grab samples. Source: Rukavina (2000).

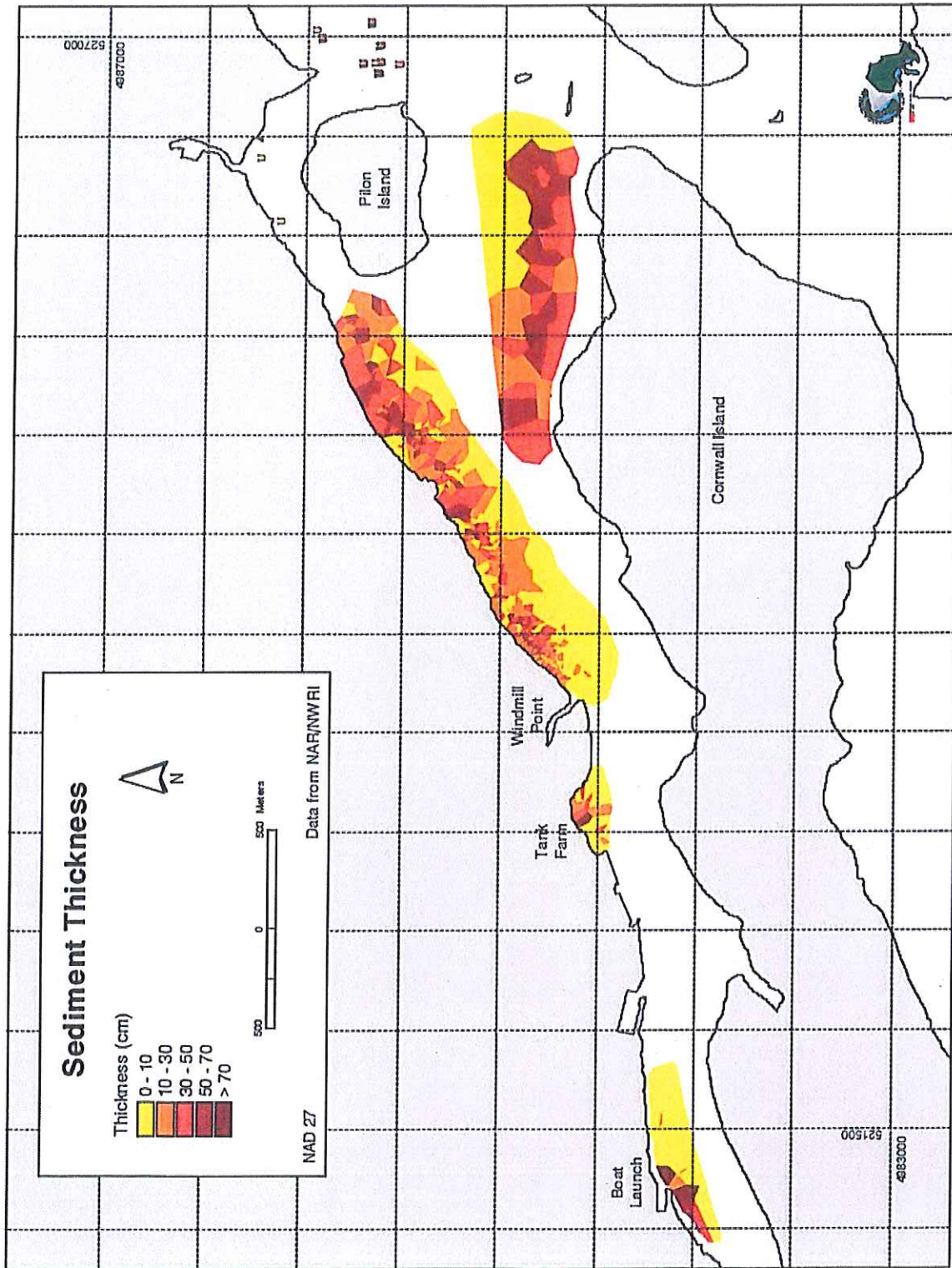


Figure 8. Sediment thickness in study area, computed by GIS polygon analysis of data from sediment core and grab samples. Source: Rukavina (2000).

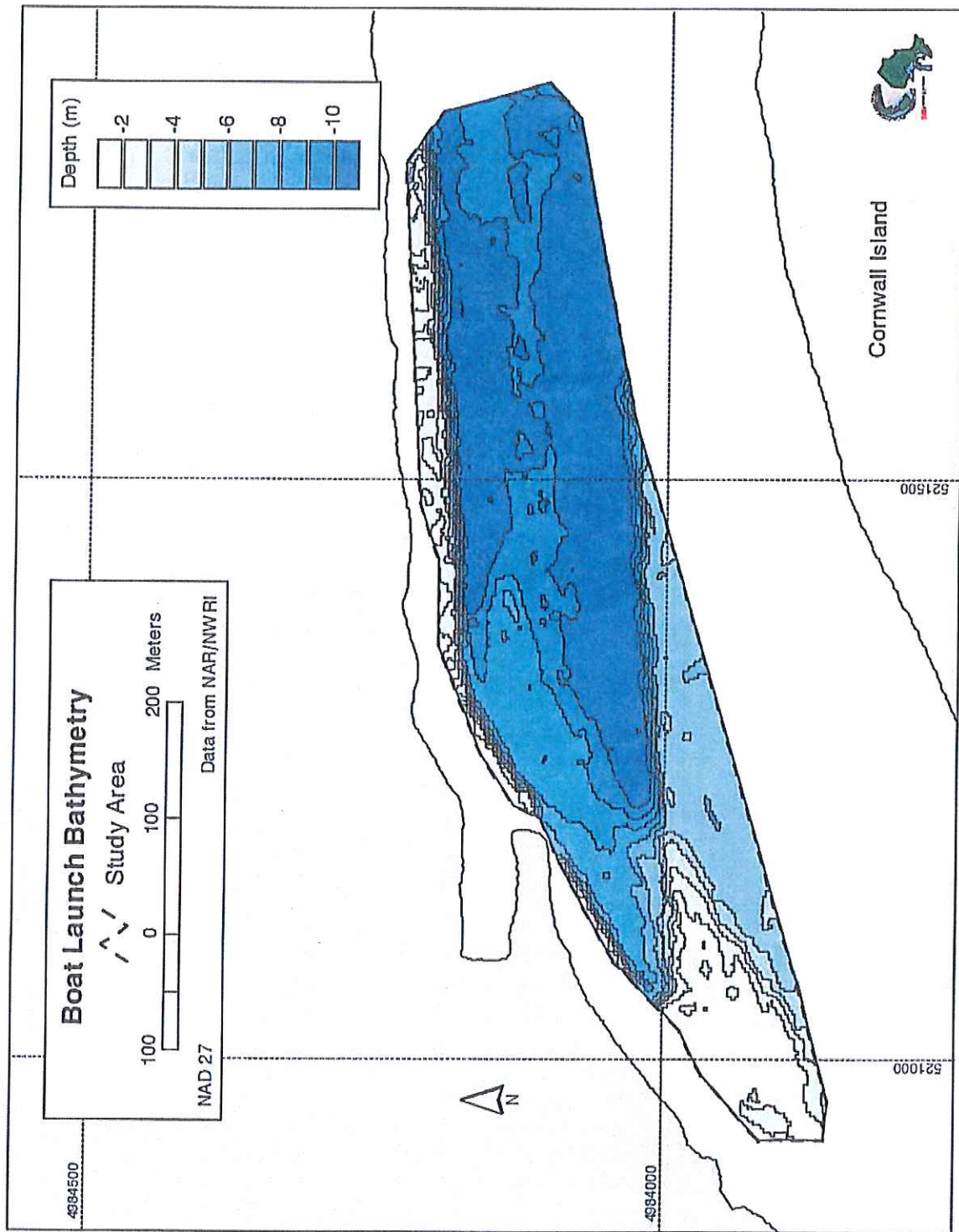


Figure 9. Average bathymetry (water depth) in Zone 1 (Lamoureux Park boat launch) using 1993-1998 RoxAnn mapping data.
 Source: Rukavina (2000).

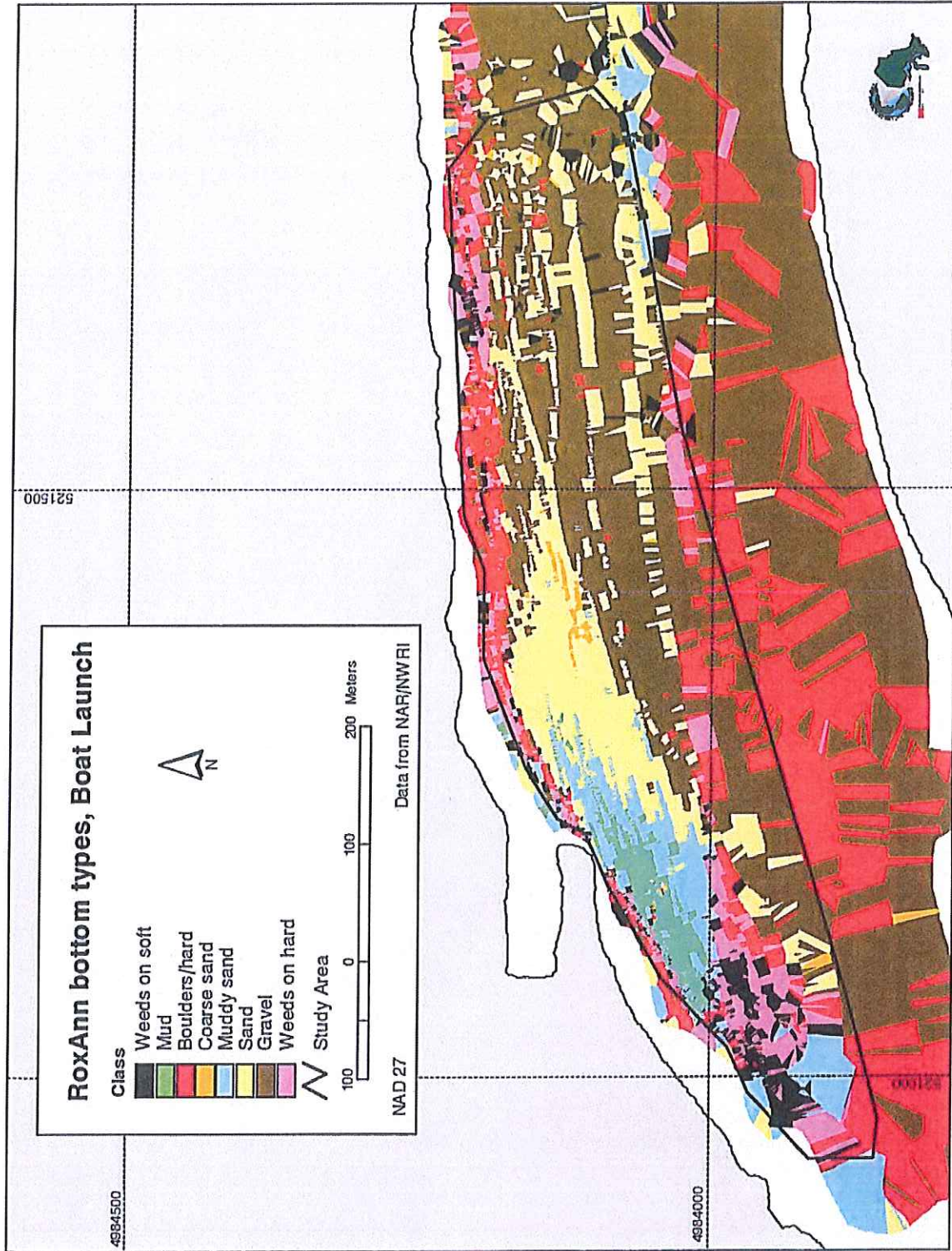


Figure 10. RoxAnn bottom types in Zone 1 (Lamoureux Park boat launch). Source: Rukavina (2000).

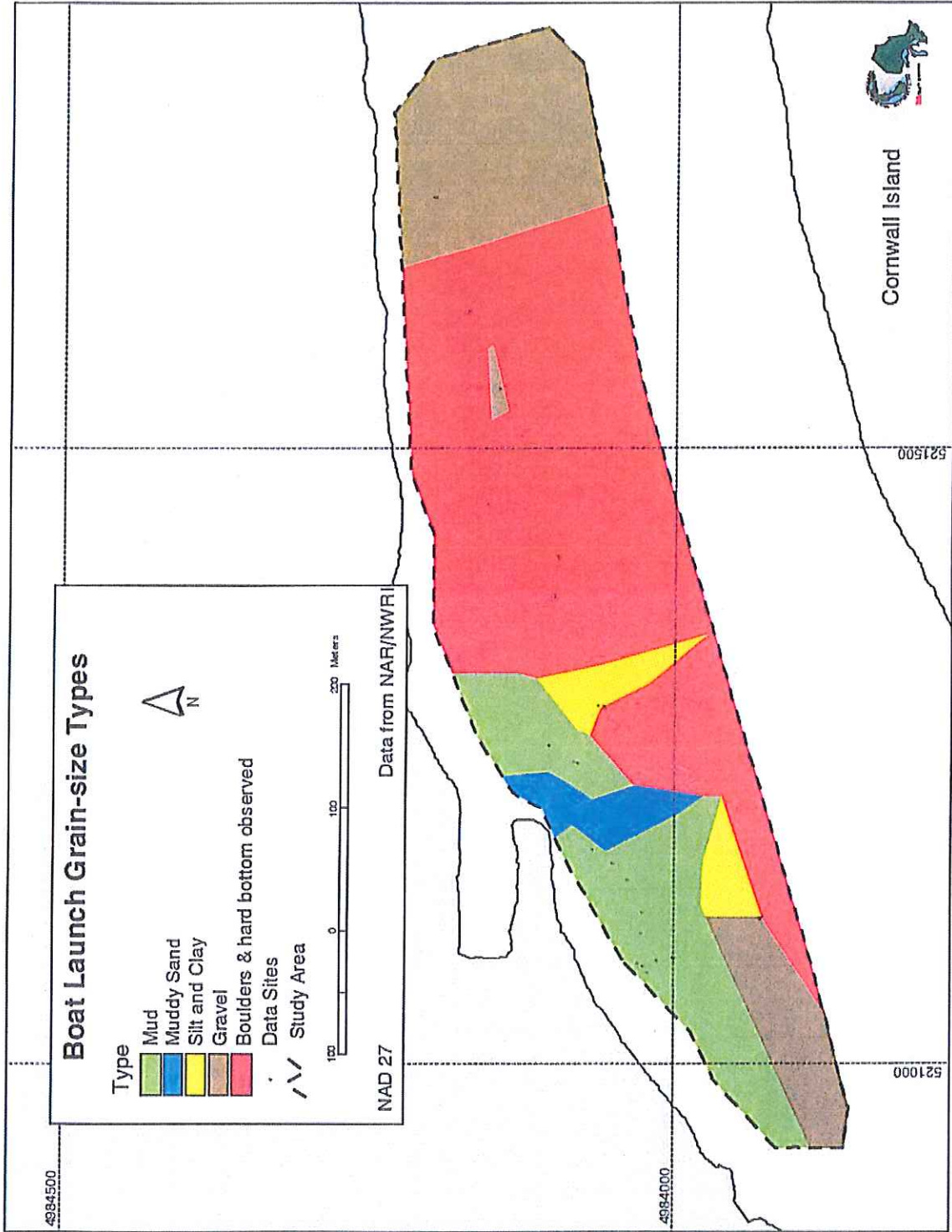


Figure 11. Grain size distribution in Zone 1 (Lamoureux Park boat launch). Distribution computed by GIS polygon analysis of data from sediment core or grab samples taken at locations indicated by black dots. Source: Rukavina (2000).

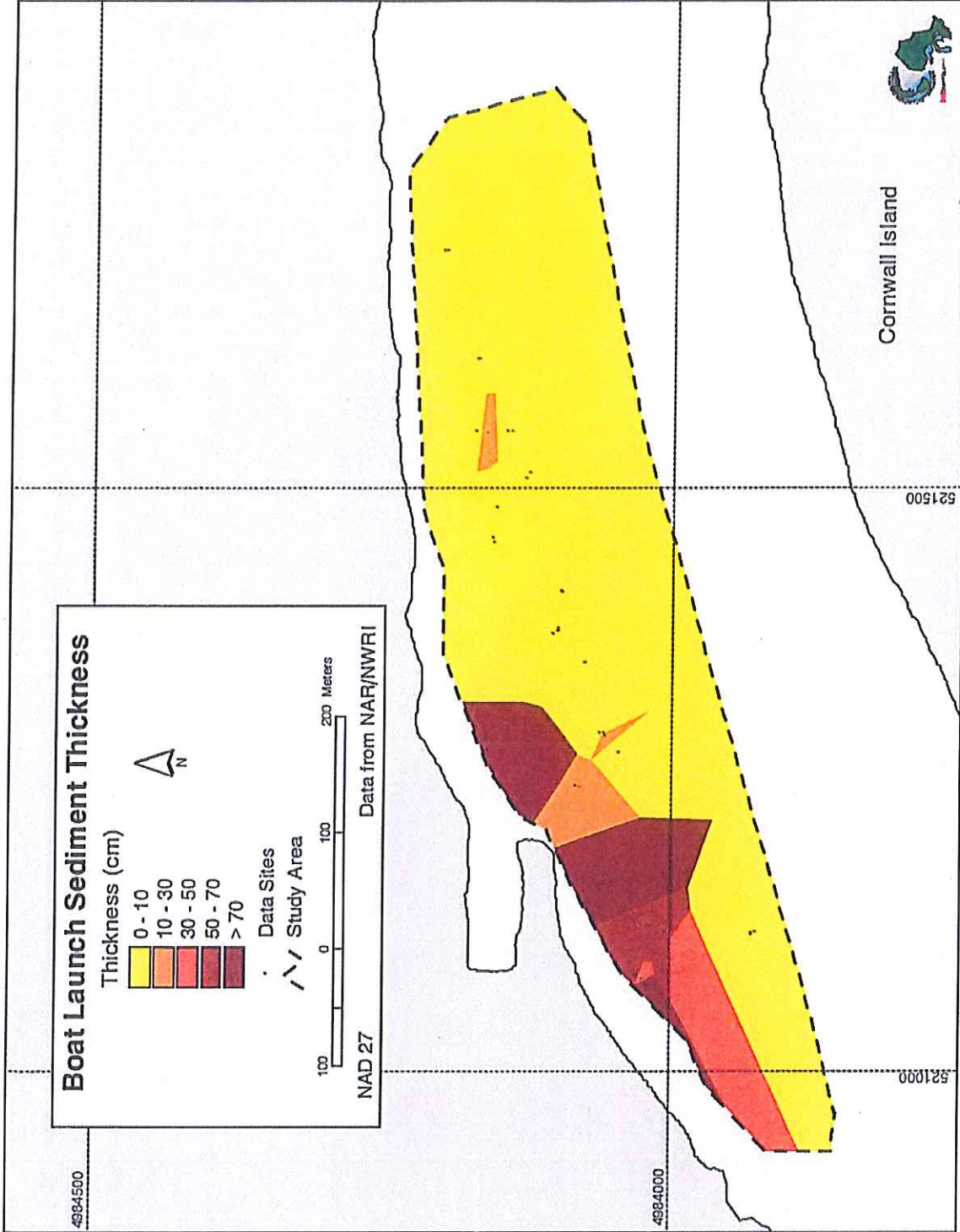


Figure 12. Sediment thickness in Zone 1 (Lamoureux Park boat launch). Computed by GIS polygon analysis of data from sediment core or grab samples taken at locations indicated by black dots. Source: Rukavina (2000).

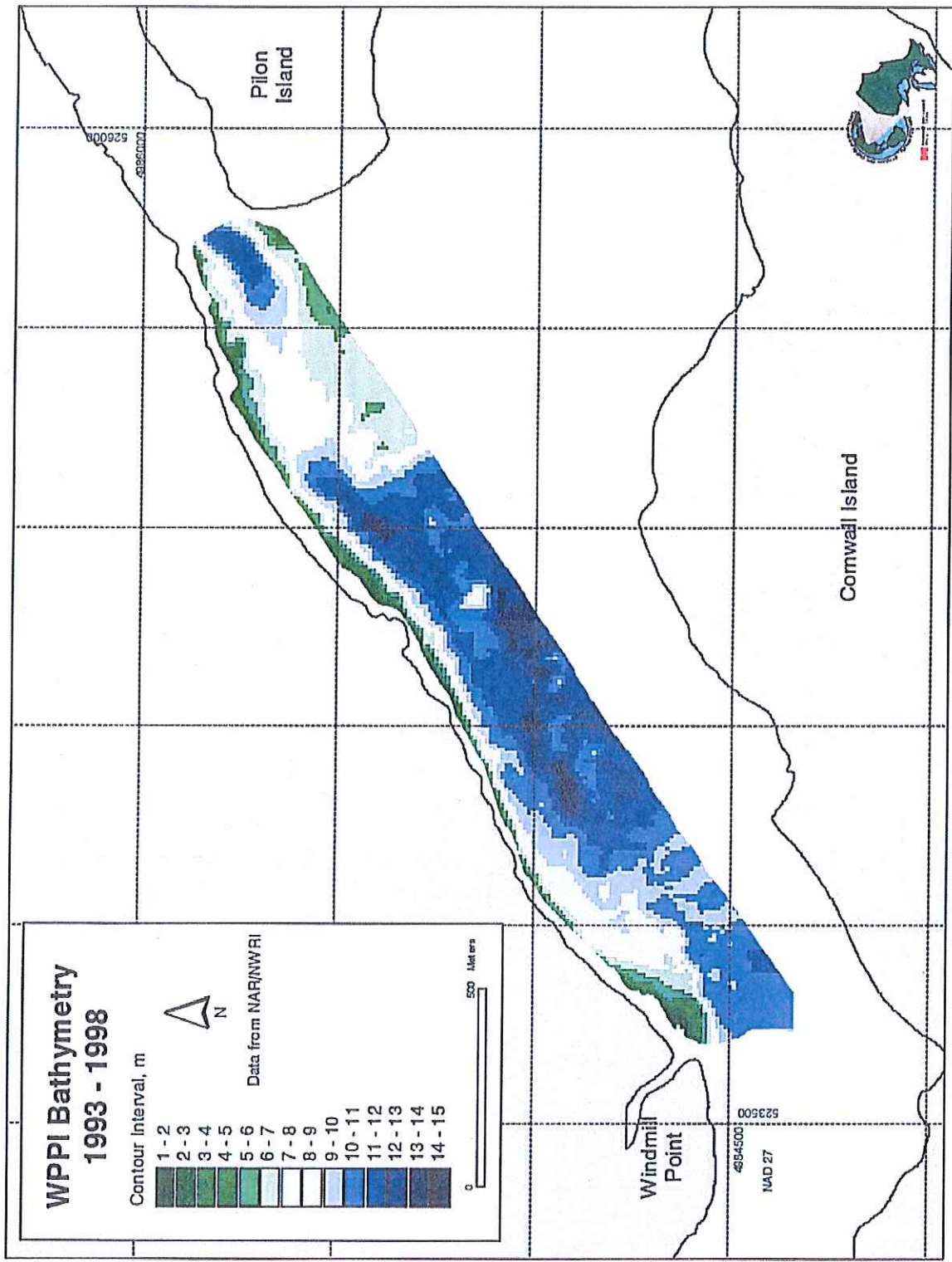


Figure 13. Average bathymetry (water depth) in Zone 2 (Windmill Point to Pilon Island) using 1993-1998 RoxAnn mapping data.
Source: Rukavina (2000).

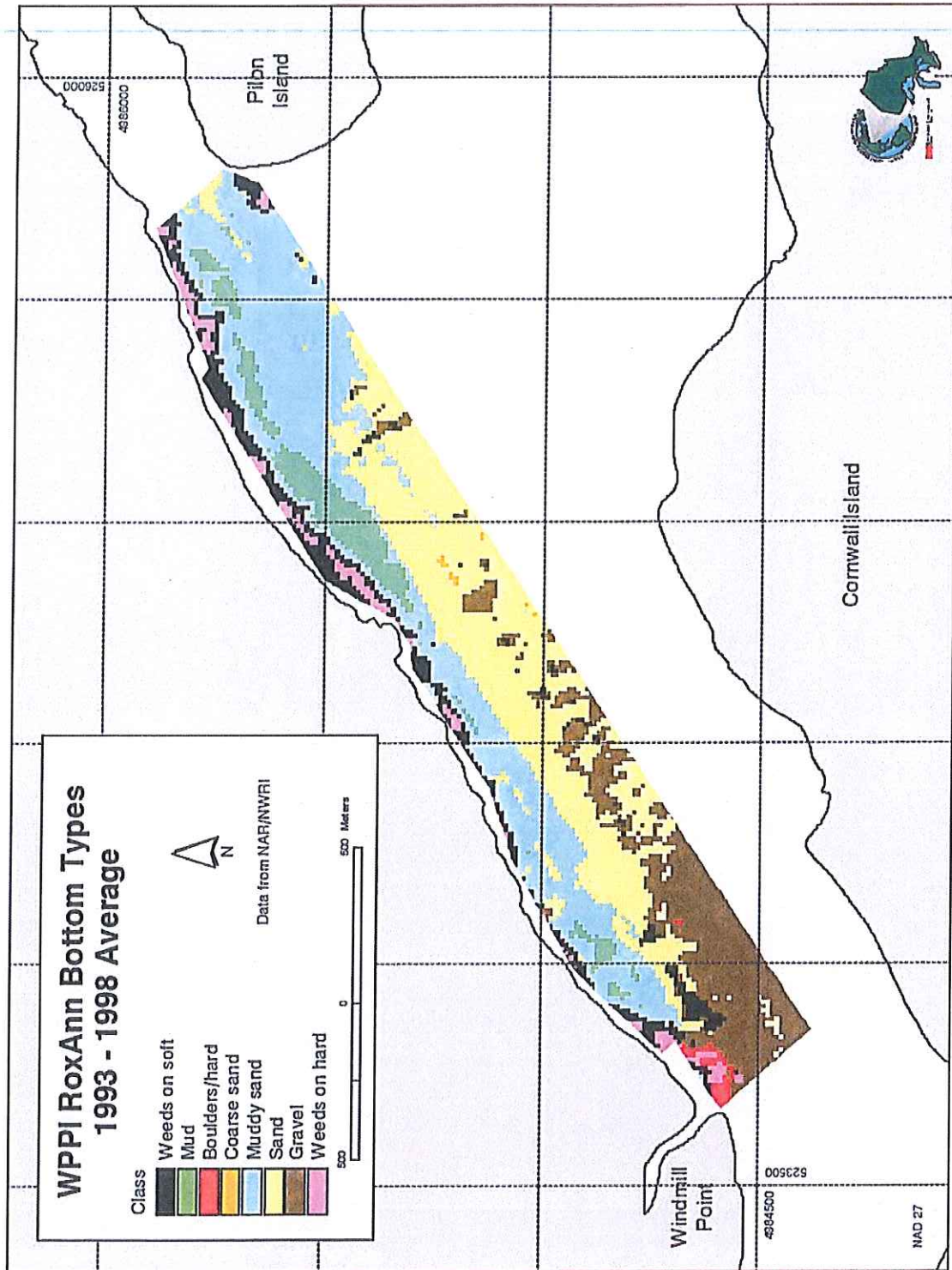


Figure 14. Average RoxAnn bottom types in Zone 2 (Windmill Point to Pilon Island) based on all data collected between 1993 and 1998. Source: Rukavina (2000).

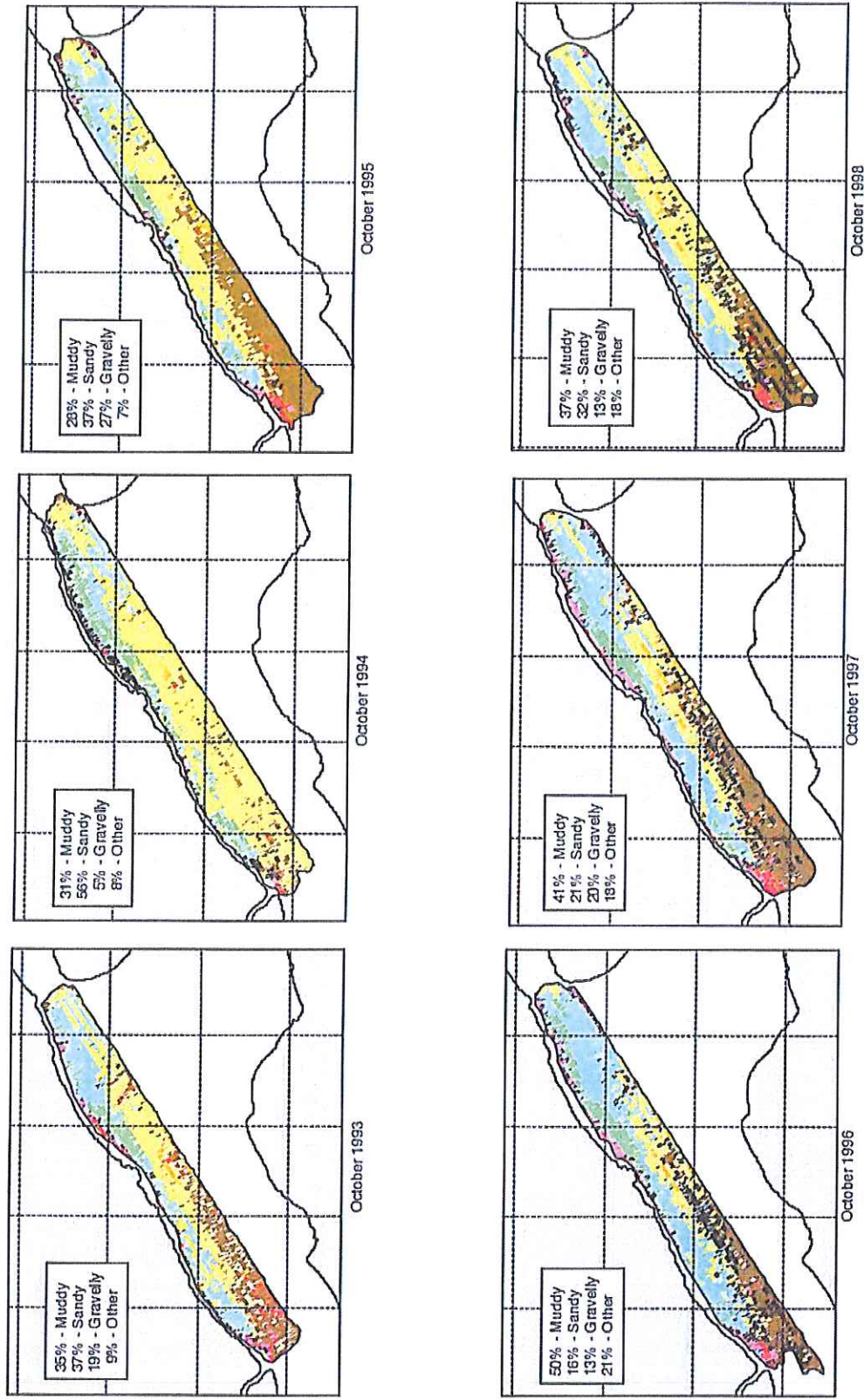


Figure 15. Changes in RoxAnn bottom types, 1993-1998, Zone 2 (Windmill Point to Pilon Island). Source: Rukavina (2000).

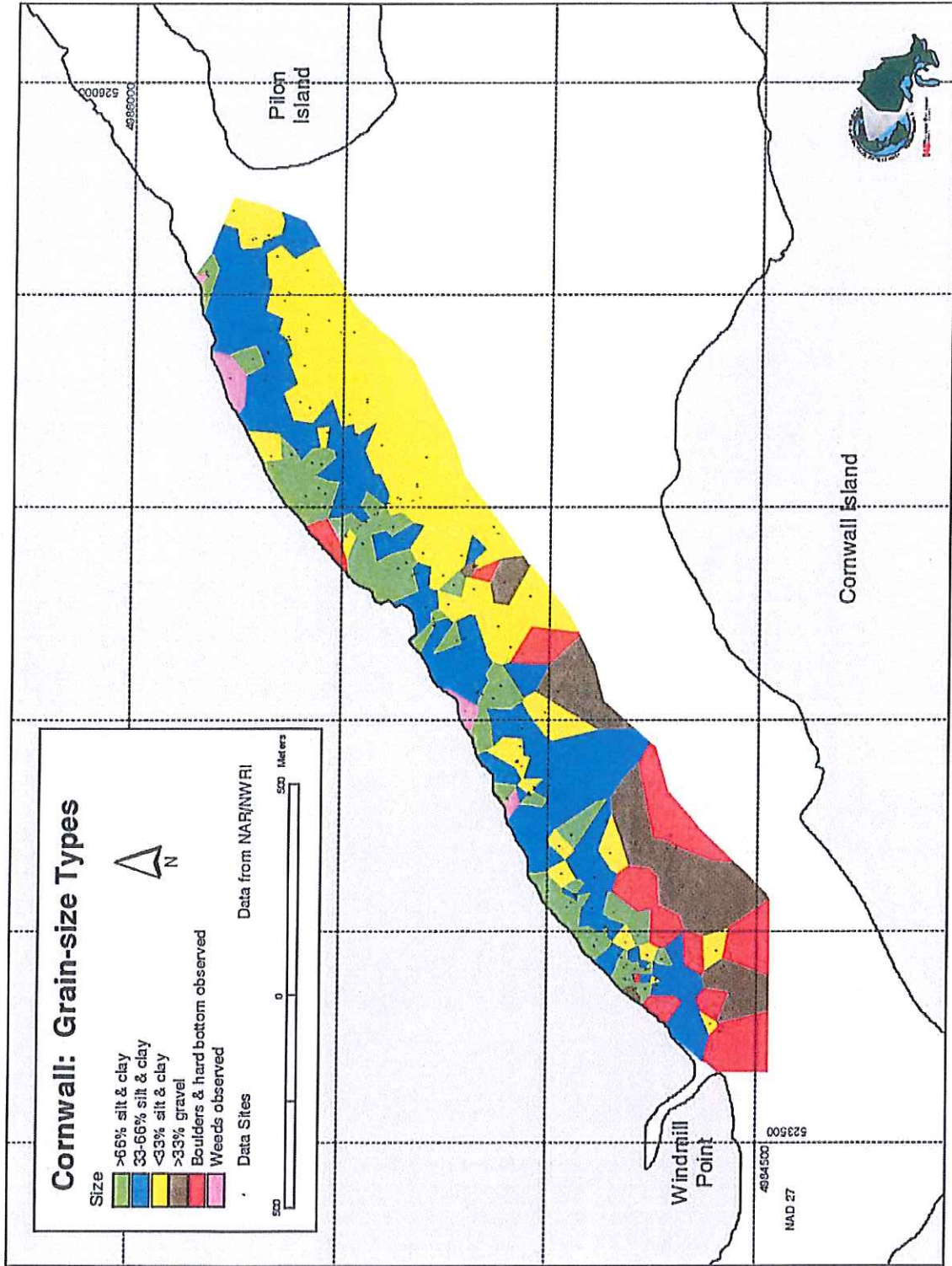


Figure 16. Grain size distribution in Zone 2 (Windmill Point to Pilon Island). Distribution computed by GIS polygon analysis of data from sediment core or grab samples taken at locations indicated by black dots. Source: Rukavina (2000).

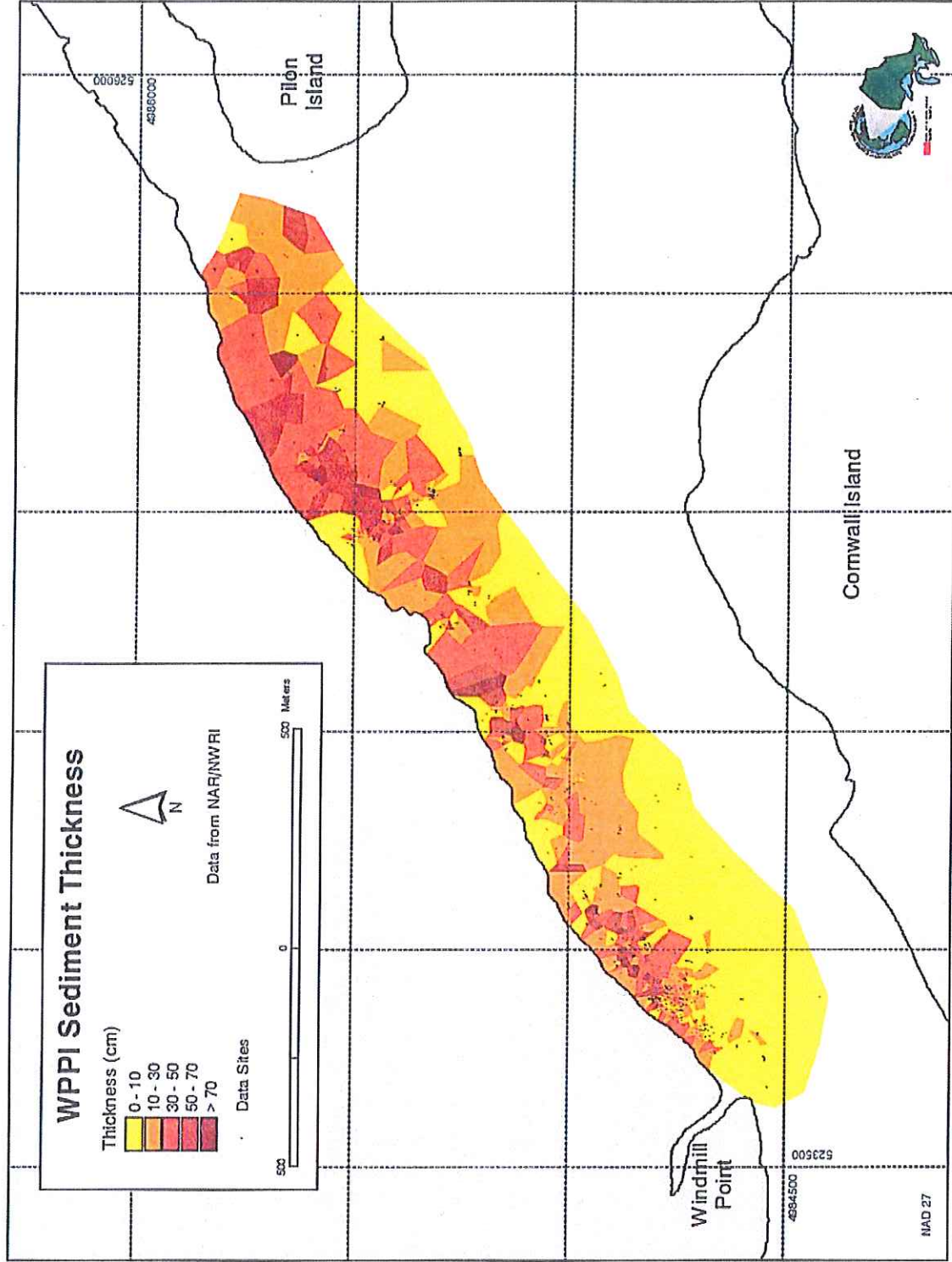


Figure 17. Sediment thickness in Zone 2 (Windmill Point to Pilon Island). Computed by GIS polygon analysis of data from sediment core or grab samples taken at locations indicated by black dots. Source: Rukavina (2000).

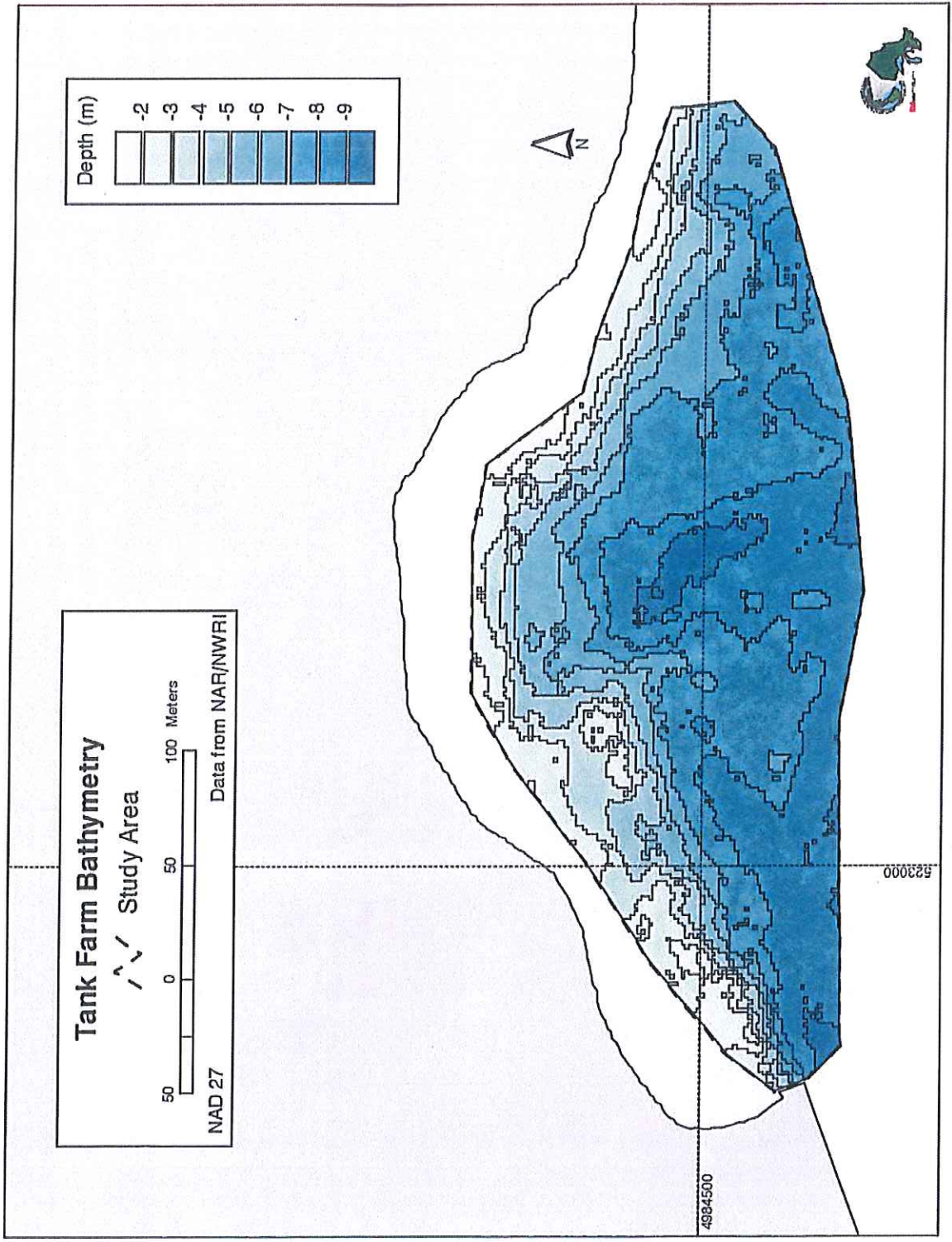


Figure 18. Average bathymetry (water depth) in Zone 3 (oil tank storage area) using 1993-1998 RoxAnn mapping data. Source: Rukavina (2000).

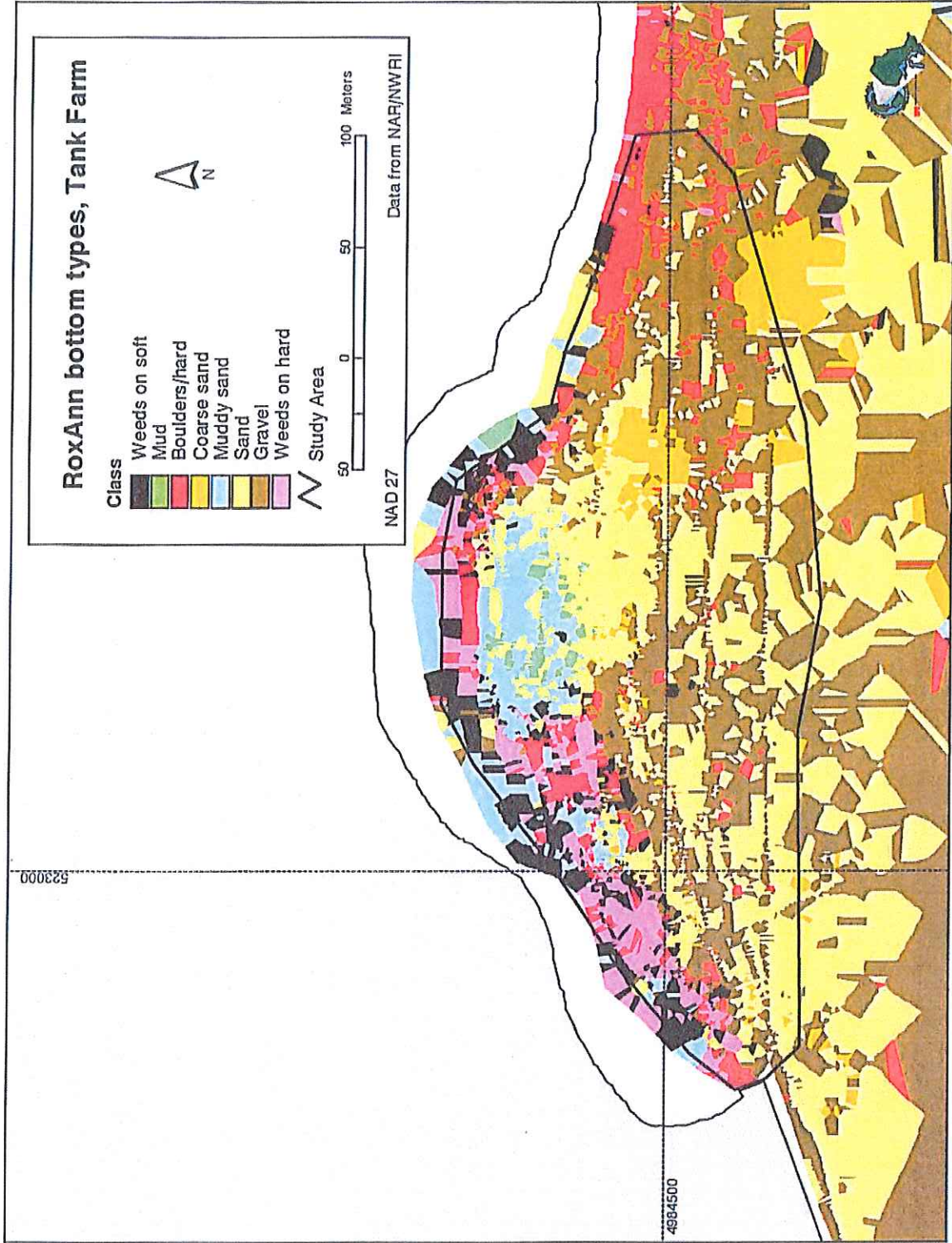


Figure 19. RoxAnn bottom types in Zone 3 (oil tank storage area). Source: Rukavina (2000).

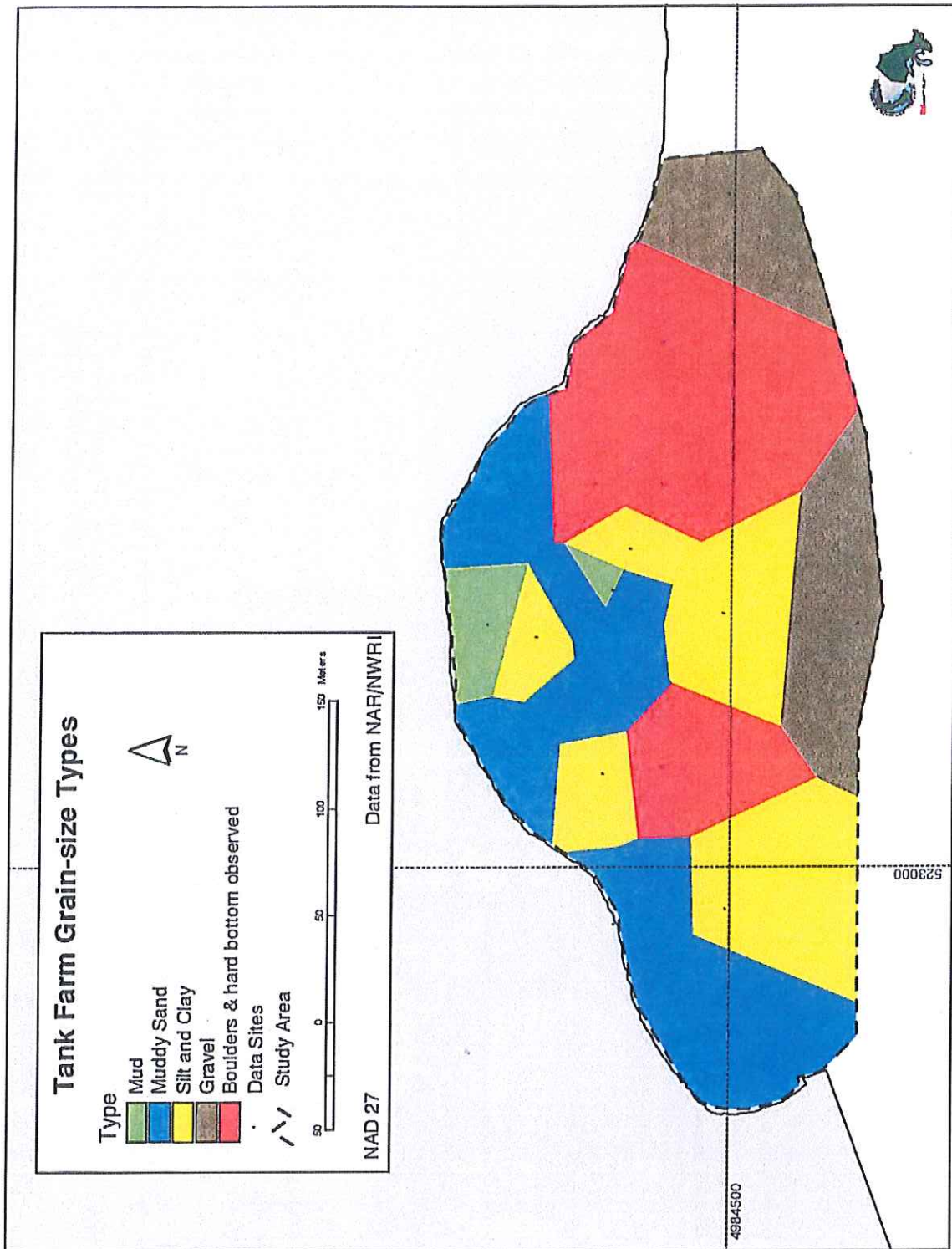


Figure 20. Grain size distribution in Zone 3 (oil tank storage area). Distribution computed by GIS polygon analysis of data from sediment core or grab samples taken at locations indicated by black dots. Source: Rukavina (2000).

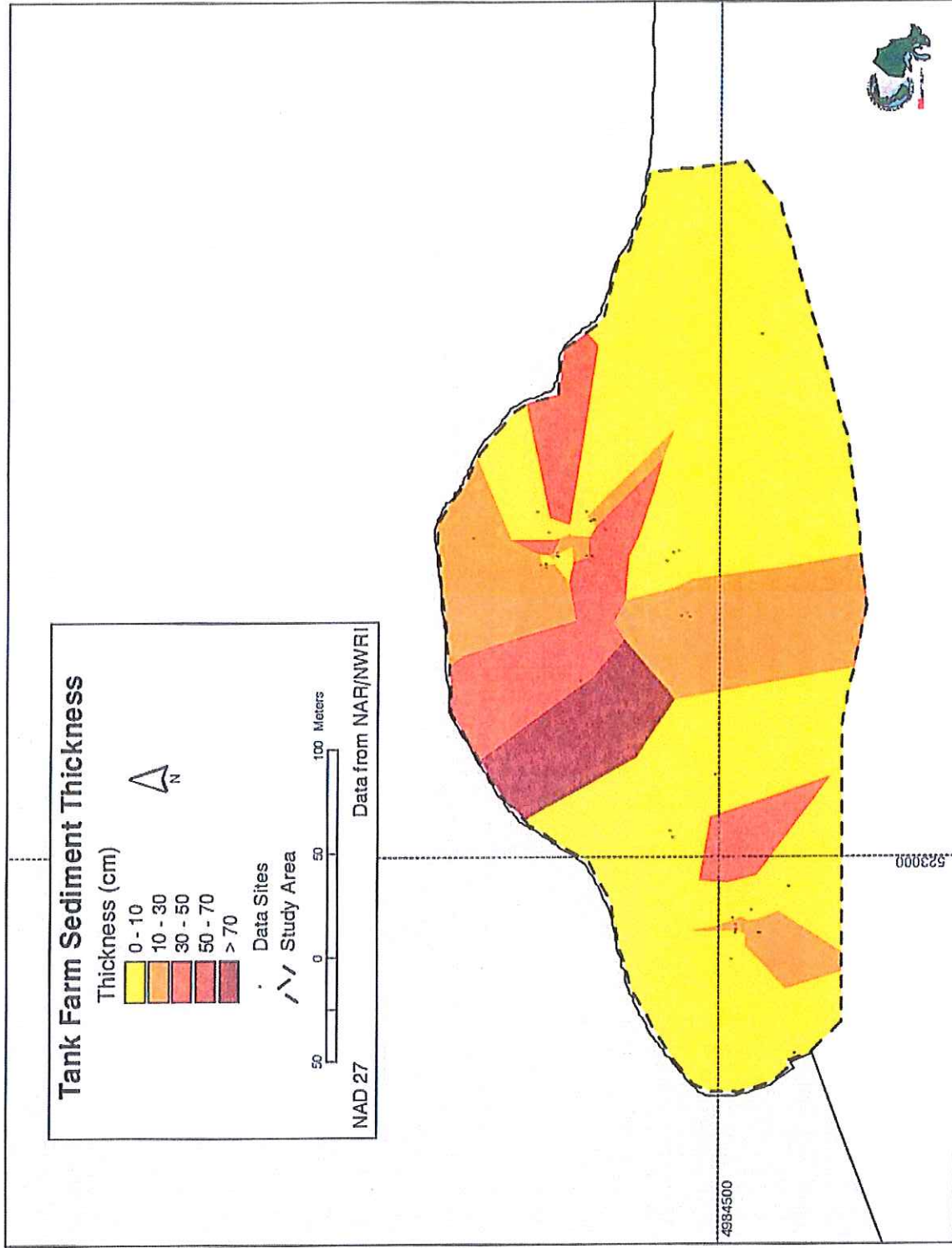


Figure 21. Sediment thickness in Zone 3 (oil tank storage area). Computed by GIS polygon analysis of data from sediment core or grab samples taken at locations indicated by black dots. Source: Rukavina (2000).

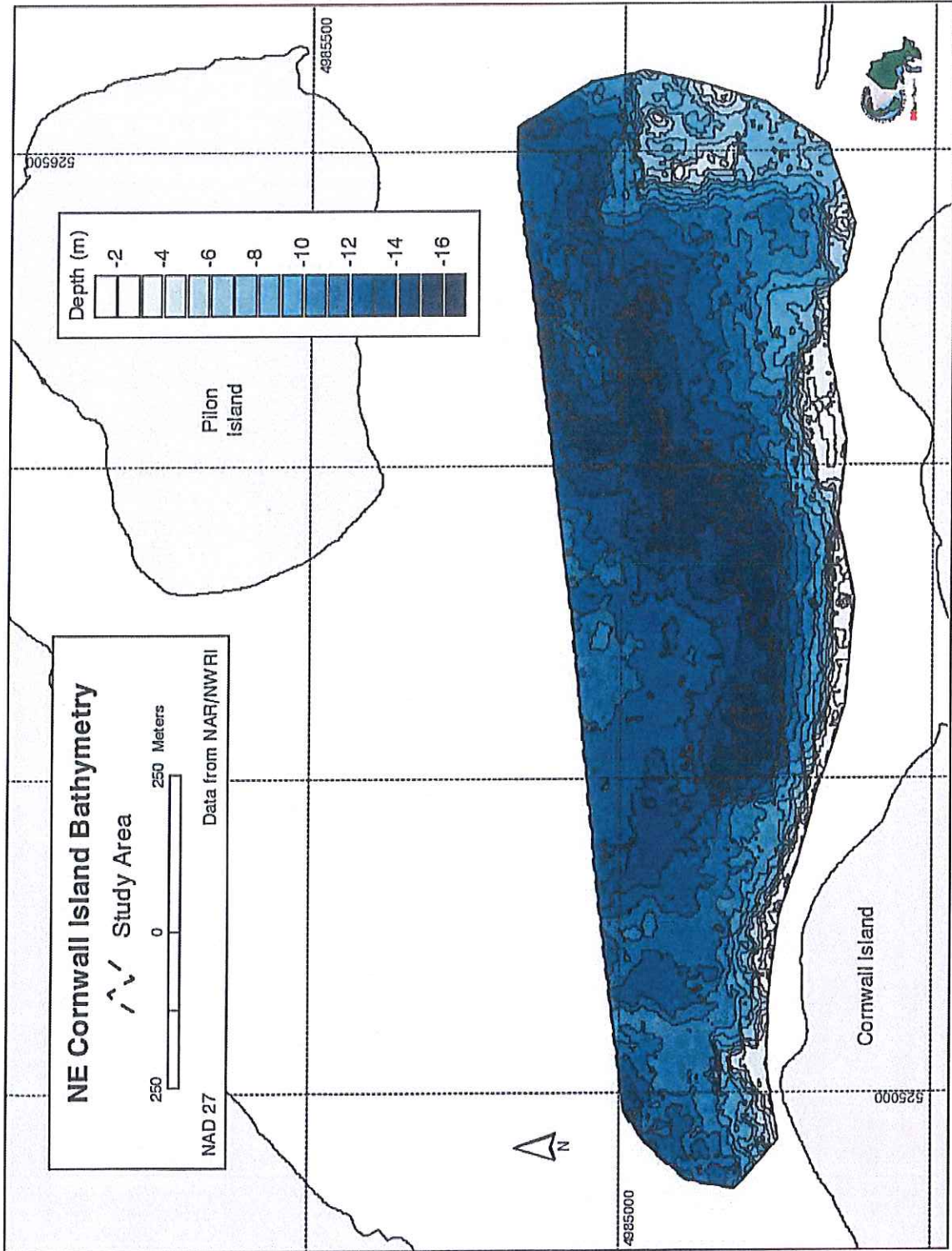


Figure 22. Average bathymetry (water depth) in Zone 4 (northeast Cornwall Island) using 1993-1998 Flox-Ann mapping data. Source: Rukavina (2000).

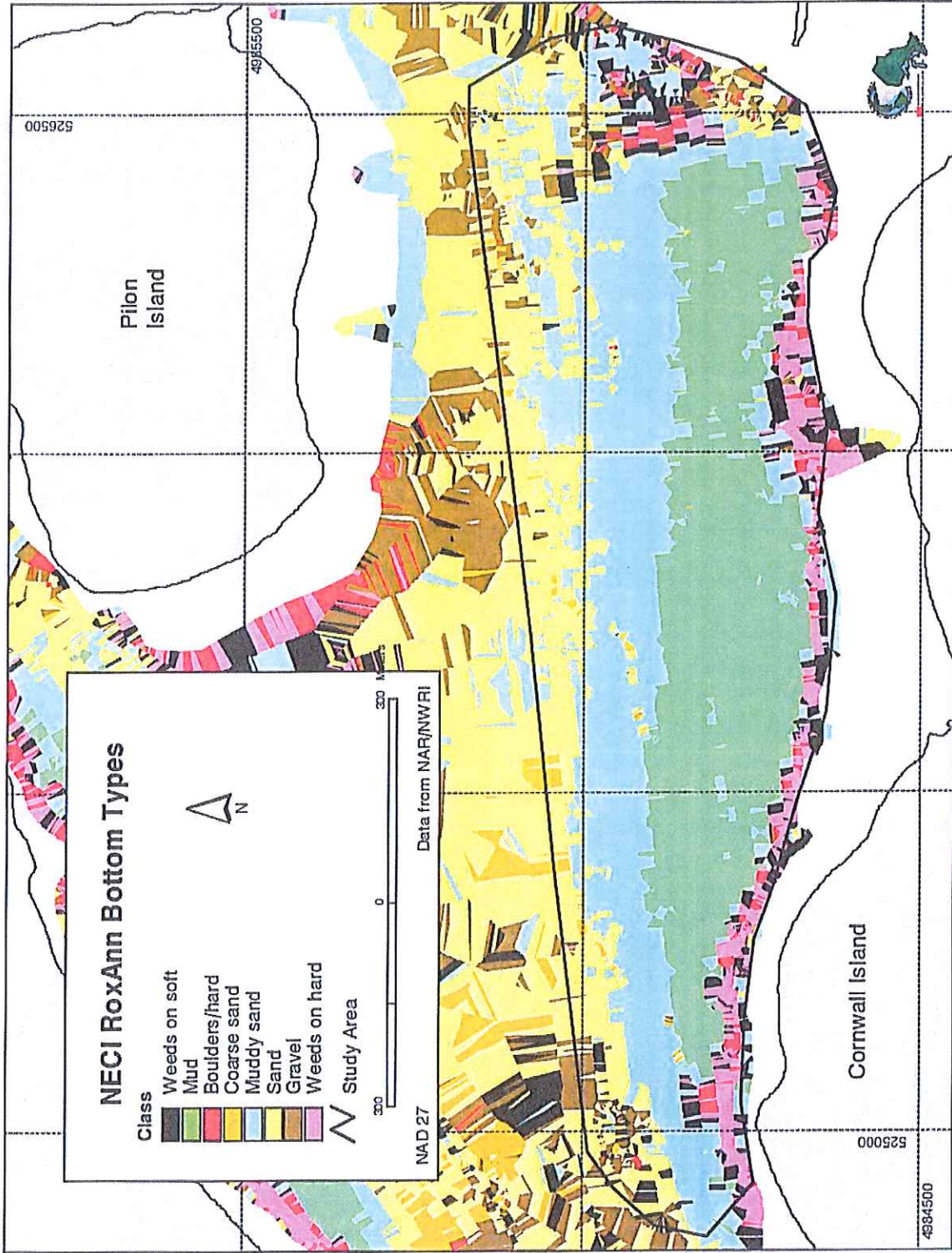


Figure 23. RoxAnn bottom types in Zone 4 (northeast Cornwall Island). Source: Rukavina (2000).

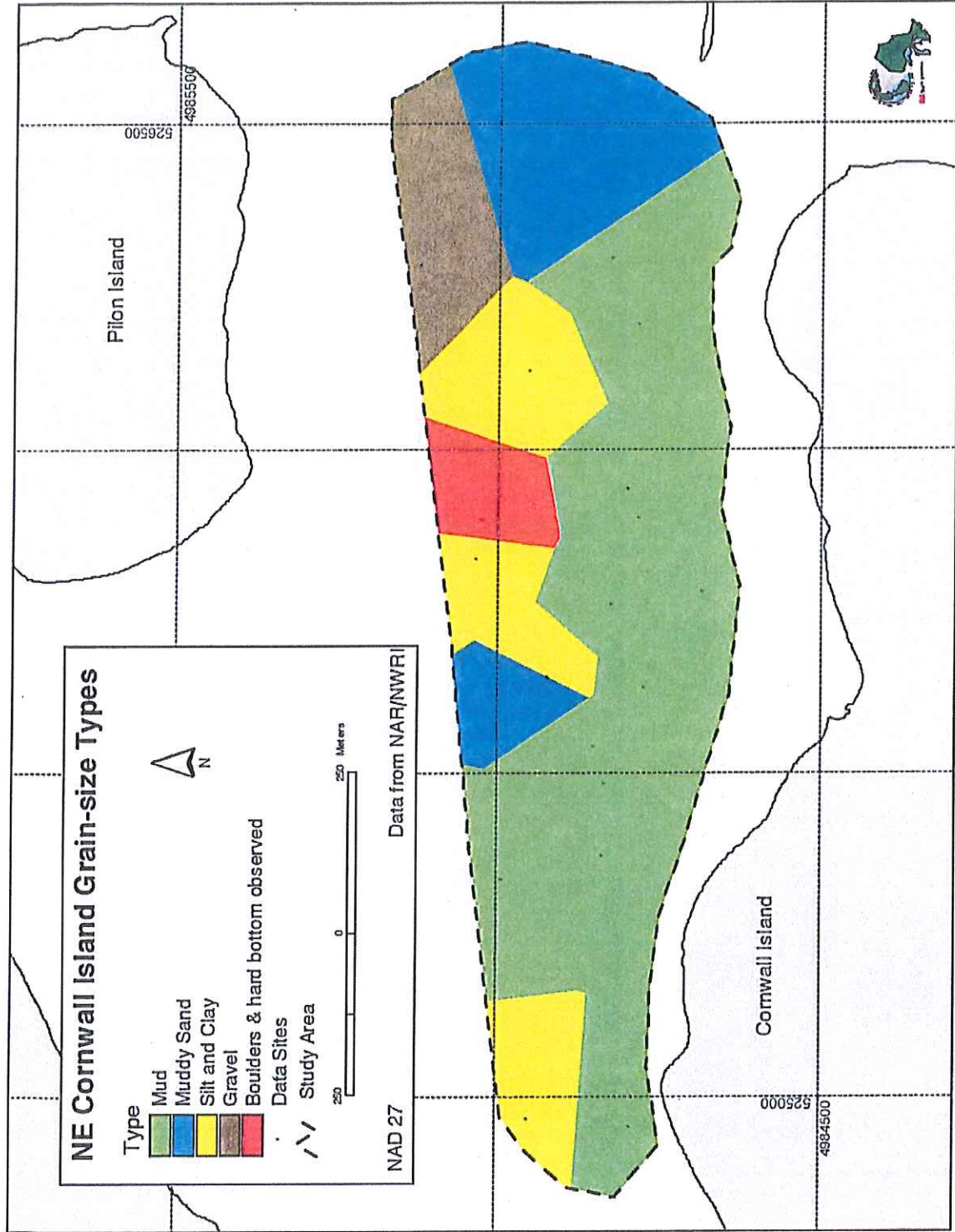


Figure 24. Grain size distribution in Zone 4 (northeast Cornwall Island). Distribution computed by GIS polygon analysis of data from sediment core or grab samples taken at locations indicated by black dots. Source: Rukavina (2000).

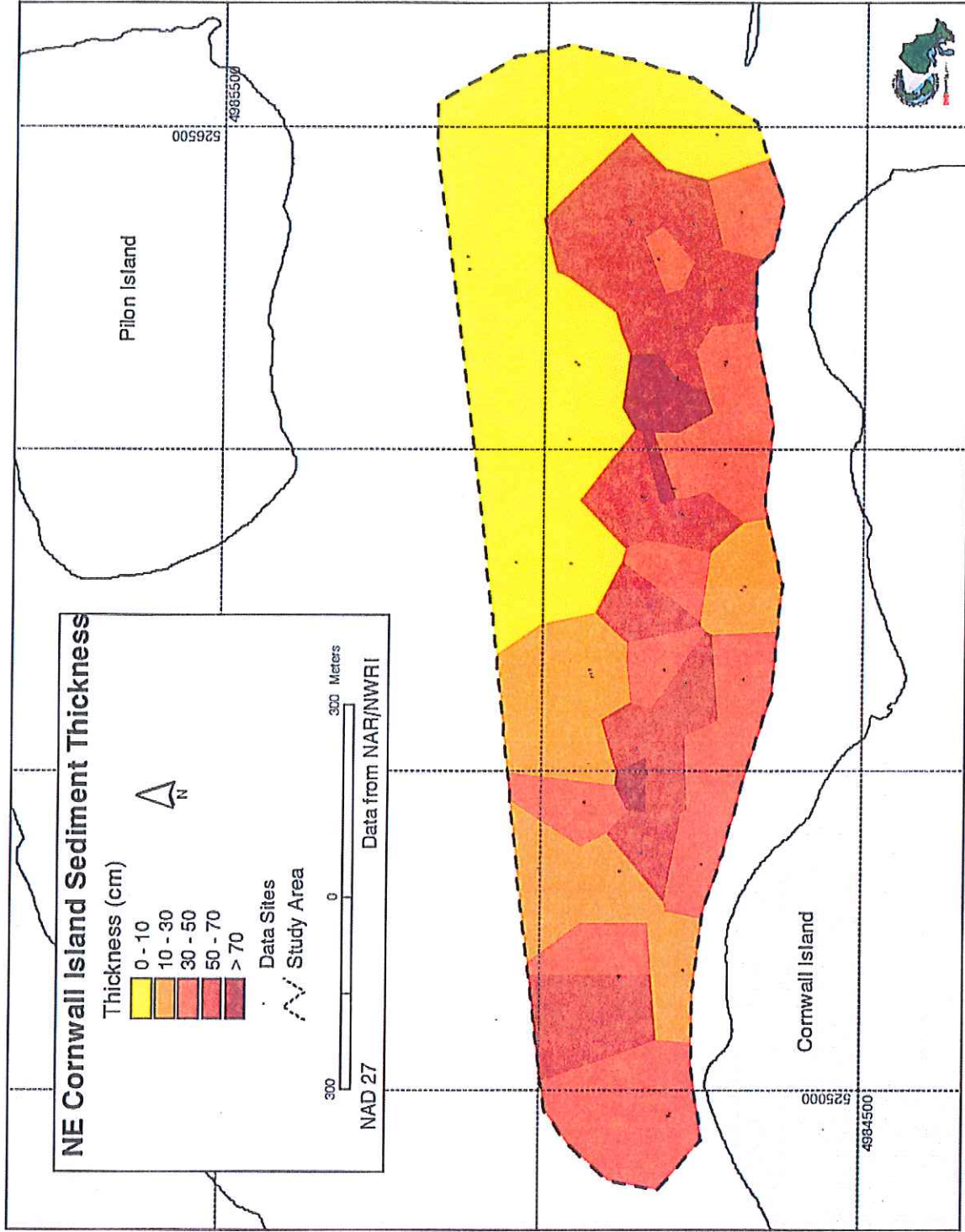


Figure 25. Sediment thickness in Zone 4 (northeast Cornwall Island). Computed by GIS polygon analysis of data from sediment core or grab samples taken at locations indicated by black dots. Source: Rukavina (2000).

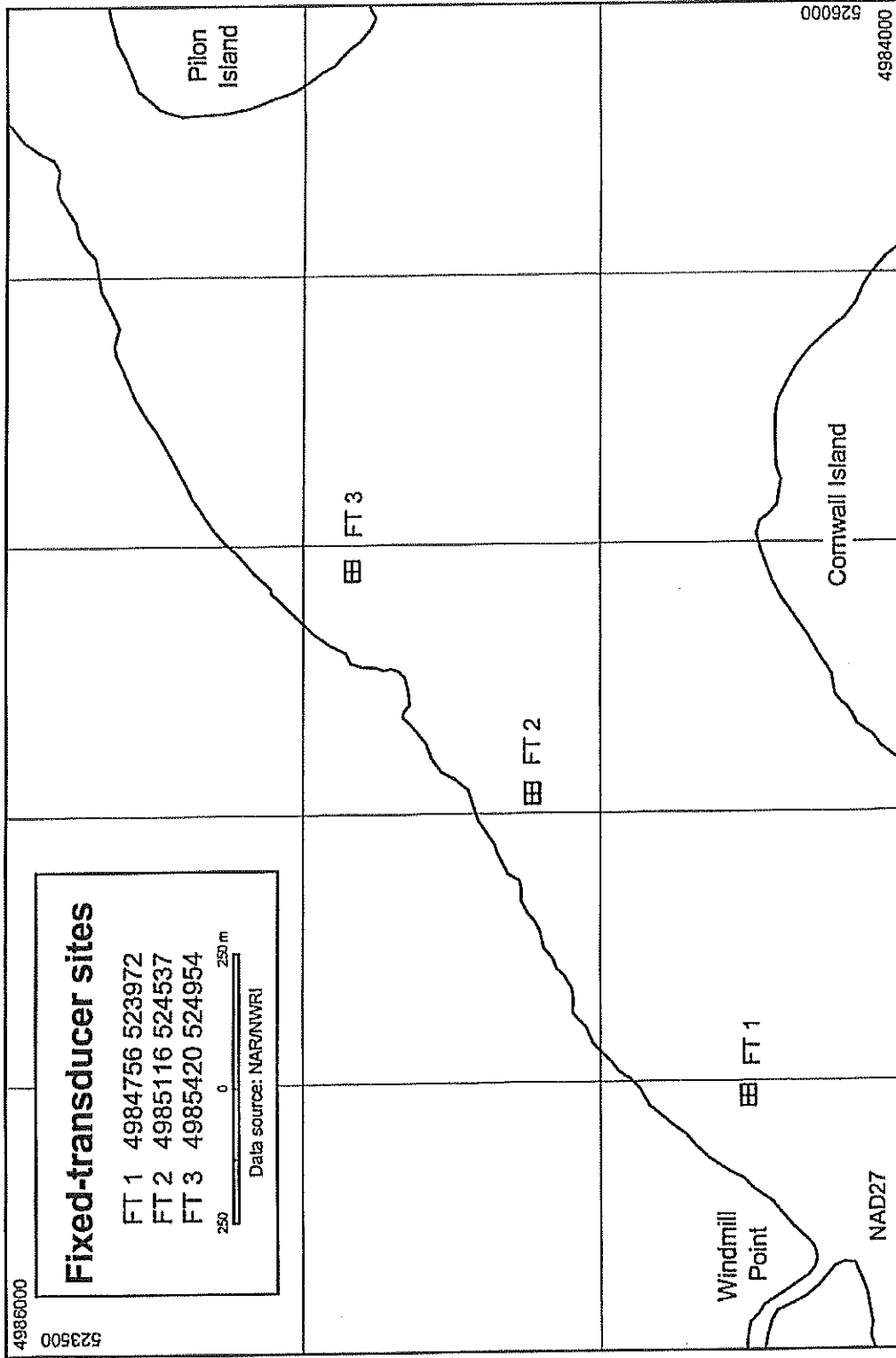


Figure 26. Fixed-transducer acoustic monitoring sites. Source: Rukavina (2000).