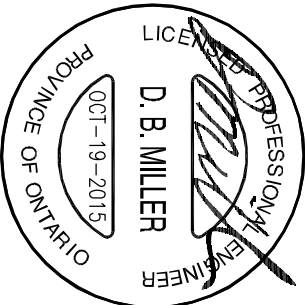
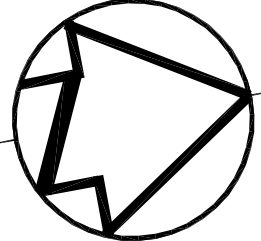


- NOTES:
- WORK SHOWN ON THIS DRAWING TO BE COMPLETED DURING PHASE 2 - STAGE 2
 - PROVIDE AUTOMATIC 2 WAY CONTROL VALVE ASSEMBLY. REFER TO DETAIL ON DRAWING M-2.
 - PROVIDE AUTOMATIC 3 WAY CONTROL VALVE ASSEMBLY. REFER TO DETAIL ON DRAWING M-2.
 - RELOCATE EXISTING WIRING, PIPING, TUBING AND CONDUITS AS REQUIRED FOR NEW EQUIPMENT AND DUCTWORK INSTALLATION.
 - DURING AIR BALANCING ADJUST THE MAXIMUM OPENING OF MOTORIZED DAMPER MD-5 & MD-6 FOR PROPER PRESSURE BALANCING BETWEEN EXHAUST AIR, RETURN AIR AND OUTSIDE AIR TO AHU.



04	ISSUED FOR TENDER	2015-10-19
03	ISSUED FOR 99% REVIEW	2015-09-04
02	ISSUED FOR 75% REVIEW	2015-08-08
01	ISSUED FOR REVIEW	2015-06-30
revision		date

Do not scale drawings.
Verify all dimensions and conditions on site and immediately notify the
Departmental Representative of all discrepancies.

A Detail No.
B drawing no. - where detail required
C drawing no. - detail enlarged
drawing no. - where detailed
drawing no. - as detailed

project name
NEWMARKET
PWSOC
Ontario

HVAC UPGRADES

drawing title
PENTHOUSE MECHANICAL
NEW WORK

drawn by designe par	P.F.
designed by conc. par	F.W.
approved by approuvé par	D.M.
date	S.D.
project date date du projet	2015-09-04
project no. no. du projet	R.071640.001
drawing no. dessinée no.	M-7

PENTHOUSE MECHANICAL - NEW WORK

SCALE: 1:50