



RETURN BIDS TO:

RETOURNER LES SOUMISSIONS À:

Bid Receiving - PWGSC / Réception des soumissions
- TPSGC

11 Laurier St./11 rue Laurier

Place du Portage, Phase III

Core 0B2 / Noyau 0B2

Gatineau, Québec K1A 0S5

SOLICITATION AMENDMENT MODIFICATION DE L'INVITATION

The referenced document is hereby revised; unless otherwise indicated, all other terms and conditions of the Solicitation remain the same.

Ce document est par la présente révisé; sauf indication contraire, les modalités de l'invitation demeurent les mêmes.

Comments - Commentaires

Ce document comporte une exigence en matière de sécurité - This document contains a security requirement

Vendor/Firm Name and Address

Raison sociale et adresse du
fournisseur/de l'entrepreneur

Issuing Office - Bureau de distribution

Construction Services Division/Division des services de construction

11 Laurier St./11 Rue Laurier

3C2, Place du Portage

Phase III

Gatineau, Québec K1A 0S5

Title - Sujet Compres. Replac. and Vent. Upgrade	
Solicitation No. - N° de l'invitation EP076-161390/A	Amendment No. - N° modif. 003
Client Reference No. - N° de référence du client 20161390	Date 2016-01-07
GETS Reference No. - N° de référence de SEAG PW-\$\$\$FG-358-68478	
File No. - N° de dossier fg358.EP076-161390	CCC No./N° CCC - FMS No./N° VME
Solicitation Closes - L'invitation prend fin at - à 02:00 PM on - le 2016-01-14	Time Zone Fuseau horaire Eastern Standard Time EST
F.O.B. - F.A.B. Plant-Usine: <input type="checkbox"/> Destination: <input type="checkbox"/> Other-Autre: <input type="checkbox"/>	
Address Enquiries to: - Adresser toutes questions à: Michaud, Jasmin	Buyer Id - Id de l'acheteur fg358
Telephone No. - N° de téléphone (819) 956-3921 ()	FAX No. - N° de FAX (819) 956-8335
Destination - of Goods, Services, and Construction: Destination - des biens, services et construction: Environnement Canada, 335 chemin River, Ottawa, ON / Environment Canada, 335 River road, Ottawa, ON	

Instructions: See Herein

Instructions: Voir aux présentes

Delivery Required - Livraison exigée	Delivery Offered - Livraison proposée
Vendor/Firm Name and Address Raison sociale et adresse du fournisseur/de l'entrepreneur	
Telephone No. - N° de téléphone Facsimile No. - N° de télécopieur	
Name and title of person authorized to sign on behalf of Vendor/Firm (type or print) Nom et titre de la personne autorisée à signer au nom du fournisseur/de l'entrepreneur (taper ou écrire en caractères d'imprimerie)	
Signature	Date

Solicitation No. - N° de l'invitation

EP076-161390

Amd. No. - N° de la modif.

003

Buyer ID - Id de l'acheteur

fg358

Client Ref. No. - N° de réf. du client

20161390

File No. - N° du dossier

fg358EP076-161390

CCC No./N° CCC - FMS No./N° VME

This amendment #003 is being issued for the following reason:

ISSUE ADDENDUM No. 2

ALL OTHER TERMS AND CONDITIONS REMAIN THE SAME

The following changes in the bid documents are effective immediately. This addendum will form part of the contract documents.

1.1 DRAWINGS

1.1.1 Mechanical

- .1 M-001 – Mechanical Legend: Revision 2 – Addendum No.02;
- .2 M-301 – Mechanical Heating & Cooling Ground Floor Upper Level: Revision 3 – Addendum No.02;
- .3 M-302 - Mechanical Heating & Cooling Interstitial Space: Revision 2 – Addendum No. 02;
- .4 M-303 – Compressor Replacement & Ventilation Upgrade: Revision 2 – Addendum No. 02;
- .5 M-308 - Mechanical Heating & Cooling Existing System Schematics: Revision 2 – Addendum No. 02;
- .6 M-318 – Mechanical Heating & Cooling Modified System Schematics: Revision 2 – Addendum No. 02.

1.2 SPECIFICATIONS

1.2.1 Section 23 21 14 – Hydronic Specialties

- .1 Add article 2.8 as follows:

2.8 *BYPASS FILTER ASSEMBLY*

- .1 Supply and install one (1) bypass filter assembly for each closed loop water/glycol system. Each assembly shall include the following items:*

- .1 One (1) brushed 304 stainless steel sump with a cast brass/nickel plated head with a maximum operating pressure at 1723 kPa and a maximum capacity of 38 L/min. The maximum operating temperature is 121 °C. The sump dimensions are: 105 mm diameter by 327 mm height.*

- .2 One (1) 20 micron 10 inch, cotton wound, stainless steel core filter cartridge.*

- .3 Two (2) pressure gauges.*

- .4 Two (2) brass isolator gate valves.*

- .5 Fifteen (15) 20 micron replacement filter cartridges.*

- .6 Factory assembled copper piping and compression fittings.*

- .2 The assembly is entirely factory assembled ready to be installed by the mechanical contractor.*

- .2 With the addition of article 2.8 the numbering of the following articles will change as follows:

2.9 *GLYCOL FILTER SYSTEM*

2.10 *HEAT TRANSFER FLUID*

1.2.2 Section 23 63 13 – Air-Cooled Refrigerant Condensers

.1 Article 2.5.2 has been modified and should read as follows:

.2 Fan venturi: **800 mm** spun venturi for maximum fan efficiency and low noise level.

1.2.3 Section 23 75 13 – Custom-Packaged, Outdoor, Central Station Air Handling Units

.1 Article 2.17.7 has been ***deleted***.

1.2.4 Section 23 82 18 – Blast Coolers

.1 Article 2.1.3 has been modified and should read as follows:

.3 Motors: rotor type motors shall be permanently lubricated and thermally protected with all cast aluminum casing coupled to the fan blade. High efficiency motors shall be installed on a high depth venturi for efficient and quiet performance. Each motor and fan shall be installed with a heavy duty steel wire gauge guard. Each motor shall be connected to an electrical section at the end of the cabinet to a terminal board.

ISSUED FOR TENDER/
ÉMIS POUR SOUMISSION
2015/10/21



Public Works and
Government Services
Canada

ENVIRONMENT CANADA COMPRESSOR REPLACEMENT & VENTILATION UPGRADE
ENVIRONNEMENT CANADA REMPLACEMENT DU COMPRESSEUR ET MISE À JOUR DU
SYSTÈME DE VENTILATION

Travaux publics et services
gouvernementaux
Canada

335 RIVER ROAD, OTTAWA, ONTARIO

GENERAL
GÉNÉRAL

SECTION "A" ON DRAWING MVA-M-0300
COUPE "A" SUR Dessin MVA-M-0300



UP
EN HAUT

DN
EN BAS

INDICATION
INDICATION

DIRECTION
DIRECTION

REVISION NO. 1
RÉVISION NO. 1

ACCESSORIES IDENTIFICATION
IDENTIFICATION D'ACCESSOIRES

PIPE DIAMETER
DIAMÈTRE DE LA TUYAUTÉ

PIPE DIAMETER
DIAMÈTRE DE LA TUYAUTÉ

EXISTING TO REMAIN
EXISTANT À CONSERVER

EXISTING TO BE REMOVED
EXISTANT À ÊTRE ENLEVÉ

EXISTING PIPING TO REMAIN
EXISTANT À CONSERVER

EXISTING PIPING TO BE REMOVED
EXISTANT À ÊTRE ENLEVÉ

NEW
NOUVEAU

PLUMBING
PLOMBERIE

NO DIRECT DRAIN
DÉGÂGE DIRECT

DOMESTIC COLD WATER
EAU FROIDE DOMESTIQUE

NATURAL GAS XXX kPa
GAZ NATUREL XXX kPa

REVERSE OSMOSIS
OSMOSE INVERSE

REFRIGERATION
RÉFÉRIERATION

REFRIGERANT - LIQUID
RÉFÉRIERANT - LIQUIDE

REFRIGERANT - GAS
RÉFÉRIERANT - GAZ

REFRIGERANT - SUCION
RÉFÉRIERANT - SUCION

CHILLED GLYCOL - SUPPLY
EAU GLYCOLÉE RÉFÉRIER - ALIMENTATION

CHILLED GLYCOL - RETURN
EAU GLYCOLÉE RÉFÉRIER - RETOUR

HEATING
CHAUFFAGE

HEATING GLYCOL - SUPPLY
EAU GLYCOLÉE DE CHAUFFAGE - ALIMENTATION

HEATING GLYCOL - RETURN
EAU GLYCOLÉE DE CHAUFFAGE - RETOUR

GLYCOL - SUPPLY
EAU GLYCOLÉE - ALIMENTATION

GLYCOL - RETURN
EAU GLYCOLÉE - RETOUR

VALVES
ROBINETTERIE

BALL VALVE
ROBINET À BALLE

BUTTERFLY VALVE
ROBINET PAPILLON

3 WAY ELECTRONIC VALVE - 2 POSITIONS
ROBINET ÉLECTRONIQUE À 2 POSITIONS

3 WAY ELECTRONIC VALVE - MODULATING
ROBINET ÉLECTRONIQUE À 3 VOIES - MODULANT

CHECK VALVE
CLAPET DE RETENUE

PRESSURE REDUCING VALVE
VANNES RÉDUCTRICES

PRESSURE RELIEF VALVE - ELEVATION VIEW
SOUPAPE DE DÉCHARGE PÉSSION - VUE EN ÉLEVATION

BALANCING VALVE
ROBINET D'ÉQUILIBRAGE

FITTINGS AND ACCESSORIES
RACCORDS ET ACCESSOIRES

BACKFLOW PREVENTER
DISPOSITIF ANTI-REFOULEMENT

METER
COMPTEUR

VARIBLE SPEED PUMP
POMPE À VITESSE VARIABLE

PIPE CONTINUATION
COUTURE D'UN TUB

UNION
UNION

FLANGES
BRIDES

NON FREEZE HYDRANT
PRISE D'EAU ANTIGEL

EXPANSION JOINT
JOINT DE DILATATION

GUIDE
GUIDE

ANCHOR
ANCRAGE

FLANGE
ENTOURNOIR

CLEANOUT
ÉGOUTTOIR

END CAP
RACCORC BOUCHE

CONCENTRIC REDUCER
RÉDUTR CONCENTRIQUE

ECCENTRIC REDUCER
RÉDUTR ÉCARTÉ

AUTOMATIC AIR VENT
PURSEUR D'AIR AUTOMATIQUE

DRAIN VALVE
ROBINET DE VIDANGE

FIRE PROTECTION
PROTECTION INCENDIE

SUPERVISED GATE VALVE
ROBINET À VAINNE AVEC INDICATEUR DE POSITION

FLOW SWITCH
INDICATEUR DE DÉBIT

PROTECTION CASE FOR SPRINKLER
GRILLE POUR TÊTE D'EXTINCTEUR

WIRING SPRINKLER
TÊTE D'EXTINCTEUR PENDANTE

UPRIGHT SPRINKLER
TÊTE D'EXTINCTEUR RELEVÉE

FIRE EXTINGUISHER, WALL MOUNTED
EXTINCTEUR MONTÉ EN SURFACE

AUTOMATIC SPRINKLER PIPING
EXTINCTEURS AUTOMATIQUES

VENTILATION AND AIR CONDITIONING
VENTILATION ET CLIMATISATION

EXHAUST AIR
ÉVACUATION D'AIR

SUPPLY AIR
ALIMENTATION D'AIR

RETURN AIR
RETOUR D'AIR

SUPPLY DUCT / UP
GAINÉ D'ALIMENTATION VERS LE HAUT

RETURN EXHAUST DUCT / UP
GAINÉ DE RETOUR OU D'ÉVACUATION VERS LE HAUT

RETURN EXHAUST DUCT / DN
GAINÉ DE RETOUR OU D'ÉVACUATION VERS LE BAS

SUPPLY ROUND DUCT / UP
GAINÉ CIRCULAIRE D'ALIMENTATION VERS LE HAUT

SUPPLY ROUND DUCT / DN
GAINÉ CIRCULAIRE D'ALIMENTATION VERS LE BAS

RETURN ROUND OR EXHAUST DUCT / UP
GAINÉ CIRCULAIRE DE RETOUR OU D'ÉVACUATION VERS LE HAUT

RETURN ROUND OR EXHAUST DUCT / DN
GAINÉ CIRCULAIRE DE RETOUR OU D'ÉVACUATION VERS LE BAS

FLANGE CONNECTION
RACCORC SOUPLE

BALANCING DAMPER
RÉGISTRE DE RÉGULATION

OPPOSED BLADE MOTORISED DAMPER
RÉGISTRE À LAISSE OPPOSÉES

SQUARE DUCT SIZE (FIRST NUMBER IS THE VISIBLE SIDE)
DIMENSION D'UNE GAINÉE CARRÉE (PREMIER CHIFFRE EST LE CÔTÉ VISIBLE)

ROUND DUCT SIZE
DIMENSION D'UNE GAINÉE RONDE

SQUARE OR RECTANGULAR TRANSITION TO ROUND DUCT
TRANSITION DE CARRÉE À RECTANGULAIRE À ROND

AIR FLOW
FLÈCHE D'ÉCOULEMENT D'AIR

FIRE DAMPER
RÉGISTRE COUPÉ-FEU

GRILLE AND DIFFUSER IDENTIFICATION
IDENTIFICATION DES GRILLES ET DIFFUSEURS

SAME TYPE OF ACCESSORIES IDENTIFIED BY SAME IDENTIFICATION
ACCESSOIRES DU MÊME TYPE IDENTIFIÉS PAR LA MÊME IDENTIFICATION

ART FLOW MEASURING STATION
STATION DE MESURE DE DÉBIT D'AIR

VARIABLE FREQUENCY DRIVE
ENTRAÎNEMENT À FRÉQUENCE VARIABLE

MAGNETIC STARTER
DÉMARTEUR MAGNÉTIQUE

EQUIPMENT IDENTIFICATION
IDENTIFICATION DES ÉQUIPEMENTS

CONTROLS
RÉGULATION

ELECTRICAL CABLE
CÂBLE ÉLECTRIQUE

ART FLOW MEASURING STATION
STATION DE MESURE DE DÉBIT D'AIR

VARIABLE FREQUENCY DRIVE
ENTRAÎNEMENT À FRÉQUENCE VARIABLE

MAGNETIC STARTER
DÉMARTEUR MAGNÉTIQUE

EQUIPMENT IDENTIFICATION
IDENTIFICATION DES ÉQUIPEMENTS

CONTROLS
RÉGULATION

INPUT / OUTPUT IDENTIFICATION
IDENTIFICATION D'ENTRÉE OU DE SORTIE

TRANSISTOR TRANSMITTER
TRANSMETTEUR D'ANALOGUE

TEMPERATURE TRANSMITTER
TRANSMETTEUR DE TEMPÉRATURE

LOW TEMPERATURE LIMIT SWITCH
INTERRUPTEUR DE TEMPÉRATURE DE GEL

TEMPERATURE SWITCH
INTERRUPTEUR DE TEMPÉRATURE

ELECTRIC / ELECTRONIC THERMOSTAT
THERMOSTAT ÉLECTRIQUE / ÉLECTRONIQUE

TEMPERATURE SENSOR
SONDE DE PIÈCE

CURRENT PICKING SWITCH
INTERRUPTEUR INTENSITÉ DE COURANT

VARIABLE SPEED PUMP
POMPE À VITESSE VARIABLE

ELECTRIC / ELECTRONIC THERMOSTAT
THERMOSTAT ÉLECTRIQUE / ÉLECTRONIQUE

COOLING COIL
SERPENTIN DE RÉFÉRIER

HEATING COIL
SERPENTIN DE CHAUFFAGE

ELECTRIC HEATING COIL
SERPENTIN ÉLECTRIQUE

PARALLEL BLADE DAMPER
RÉGISTRE À LAISSE PARALLÈLES

VARIABLE SPEED PUMP
POMPE À VITESSE VARIABLE



Travaux publics et services
gouvernementaux
Canada

Public Works and
Government Services
Canada

Public Works and
Government Services
Canada

Public Works and
Government Services
Canada

Public Works and
Government Services
Canada

Public Works and
Government Services
Canada

Public Works and
Government Services
Canada

Public Works and
Government Services
Canada

Public Works and
Government Services
Canada

Public Works and
Government Services
Canada

Public Works and
Government Services
Canada

Public Works and
Government Services
Canada

Public Works and
Government Services
Canada

Public Works and
Government Services
Canada

Public Works and
Government Services
Canada

Public Works and
Government Services
Canada

Public Works and
Government Services
Canada

Public Works and
Government Services
Canada

Public Works and
Government Services
Canada

Public Works and
Government Services
Canada

Public Works and
Government Services
Canada

Public Works and
Government Services
Canada

Public Works and
Government Services
Canada

Public Works and
Government Services
Canada

Public Works and
Government Services
Canada

Public Works and
Government Services
Canada

Public Works and
Government Services
Canada

Public Works and
Government Services
Canada

Public Works and
Government Services
Canada

Public Works and
Government Services
Canada

Public Works and
Government Services
Canada

Public Works and
Government Services
Canada

Public Works and
Government Services
Canada

Public Works and
Government Services
Canada

Public Works and
Government Services
Canada

Public Works and
Government Services
Canada

Public Works and
Government Services
Canada

Public Works and
Government Services
Canada

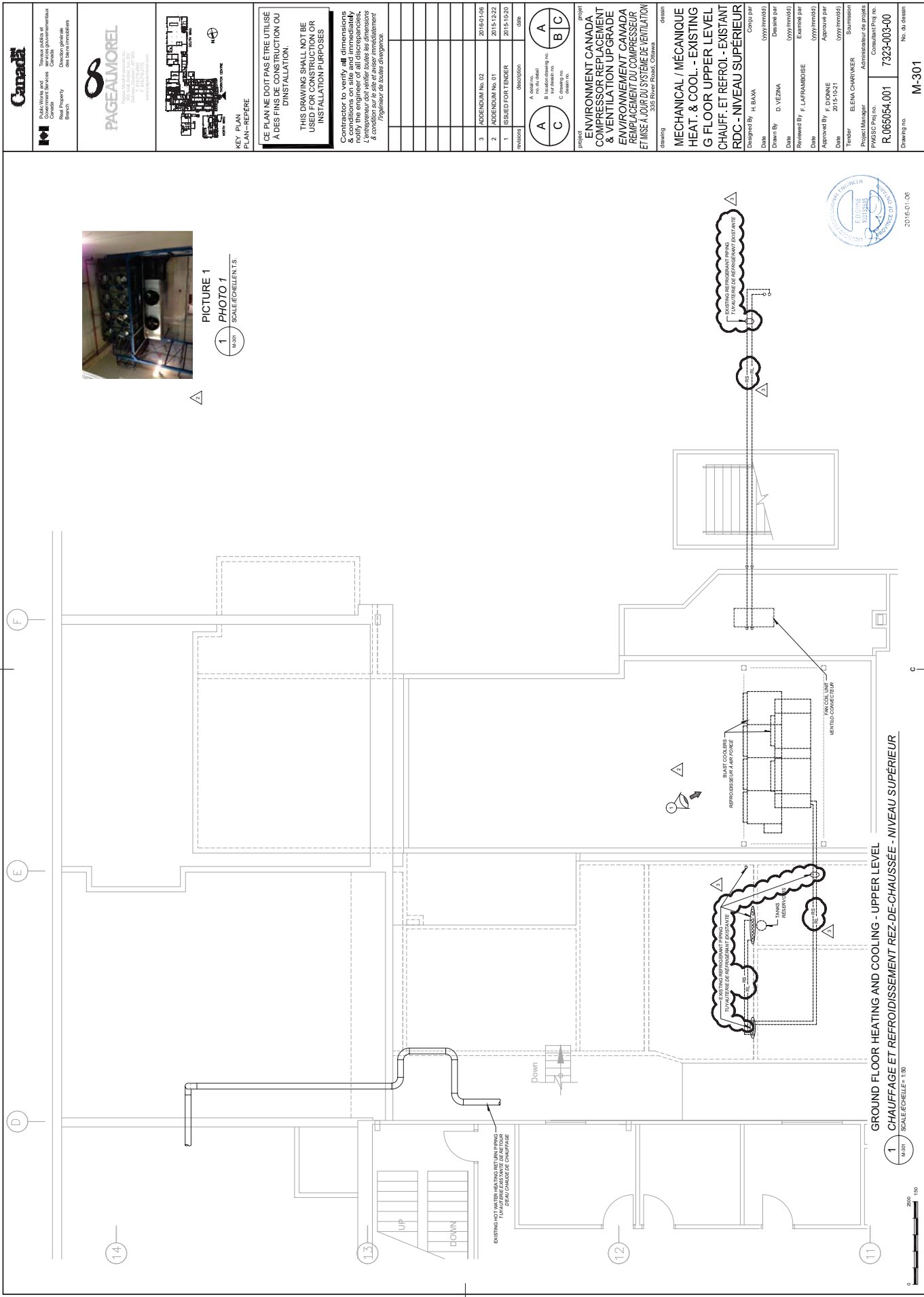
Public Works and
Government Services
Canada

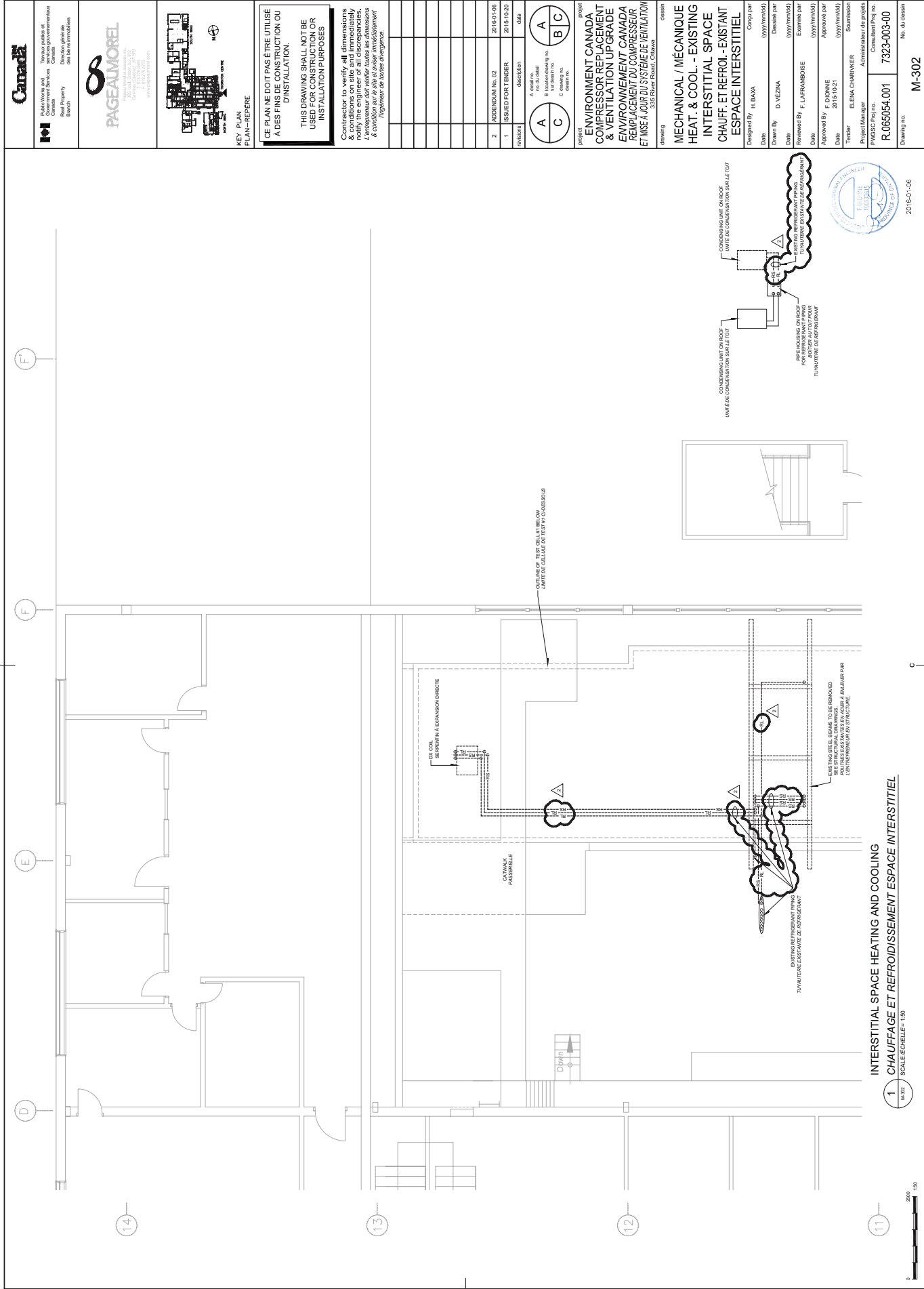
Public Works and
Government Services
Canada

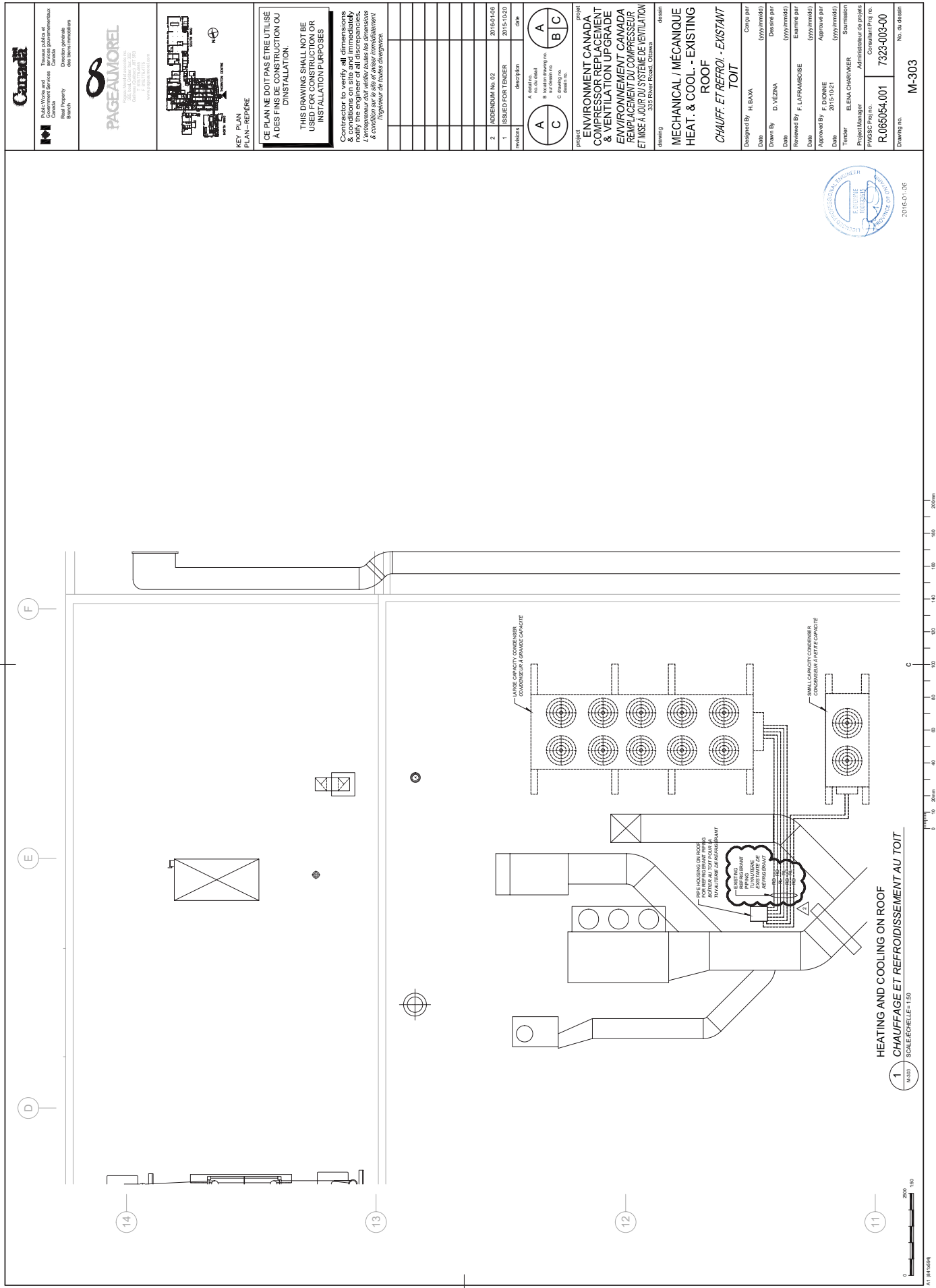
Public Works and
Government Services
Canada

Public Works and
Government Services
Canada

Public Works and
Government Services
Canada





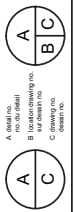




CE PLAN NE DOIT PAS ÊTRE UTILISÉ
À DES FINS DE CONSTRUCTION OU
D'INSTALLATION.

THIS DRAWING SHALL NOT BE
USED FOR CONSTRUCTION OR
INSTALLATION PURPOSES

Contractor to verify all dimensions & conditions on site and immediately notify the engineer of all discrepancies.
L'entrepreneur doit vérifier toutes les dimensions & condition sur le site et aviser immédiatement l'ingénieur de toutes divergences.

[illegible]

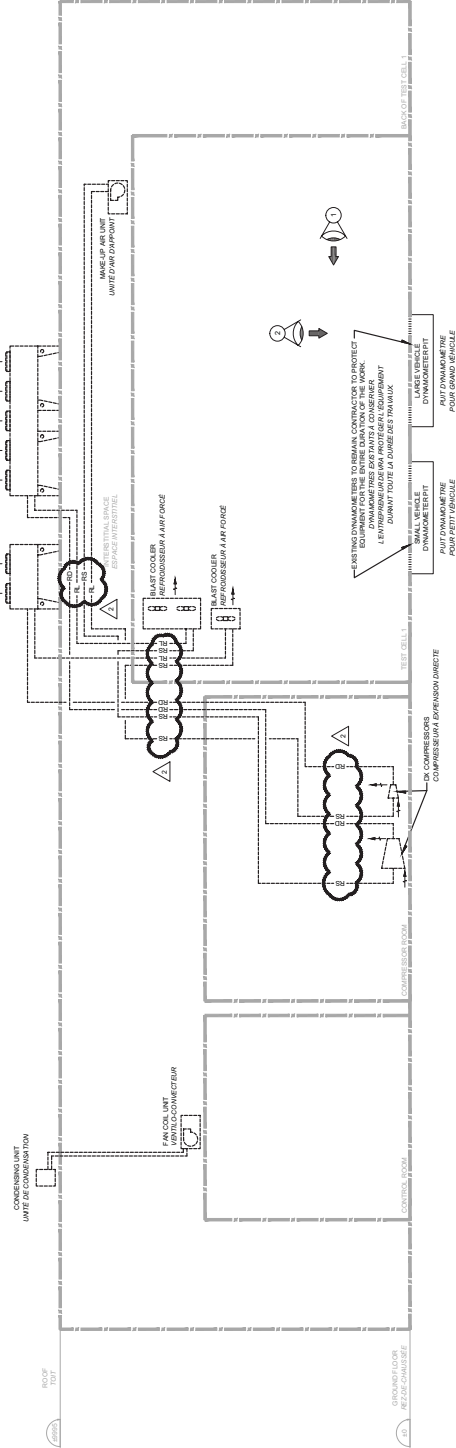
**ENVIRONNEMENT CANADA
COMPRESSOR REPLACEMENT
& VENTILATION UPGRADE
REMPLACEMENT DU COMPRESSEUR
ET MISE À JOUR DU SYSTÈME DE VENTILATION**

MECHANICAL / MÉCANIQUE
HEAT. & COOL. - EXISTING
SYSTEM SCHEMATIC
CHAUFF. ET REFOI. - EXISTANT
SCHEMA DES SYSTEMES

Date	Designed by H. BAXA	Conçu par (yyyy/mm/dd)
Drawn By	D. VEZINA	Designé par (yyyy/mm/dd)
Date	Reviewed By F. LAFRAMBOISE	Examiné par (yyyy/mm/dd)
Date		

Approved By	F. DIONNE	Approved by	
Date	2015-10-21	Consultant Proj. no.	7323-003-00
Tender	ELENA CHARIVKER	IPW/SC Proj. no.	R.065054.001
	Submission	Administrateur de projets	
	(yyyy/mm/dd)		

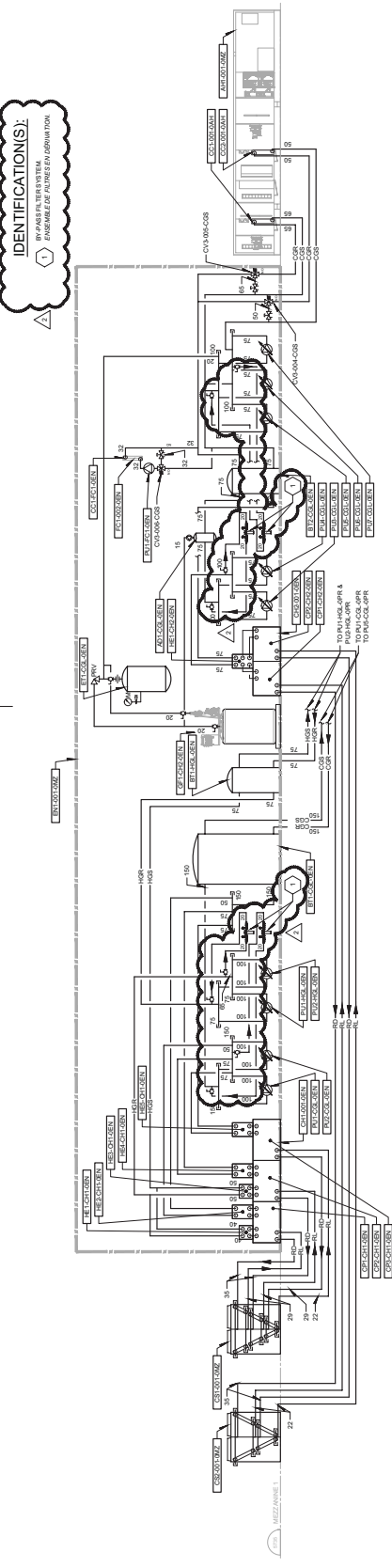
Drawing no. **M-308**



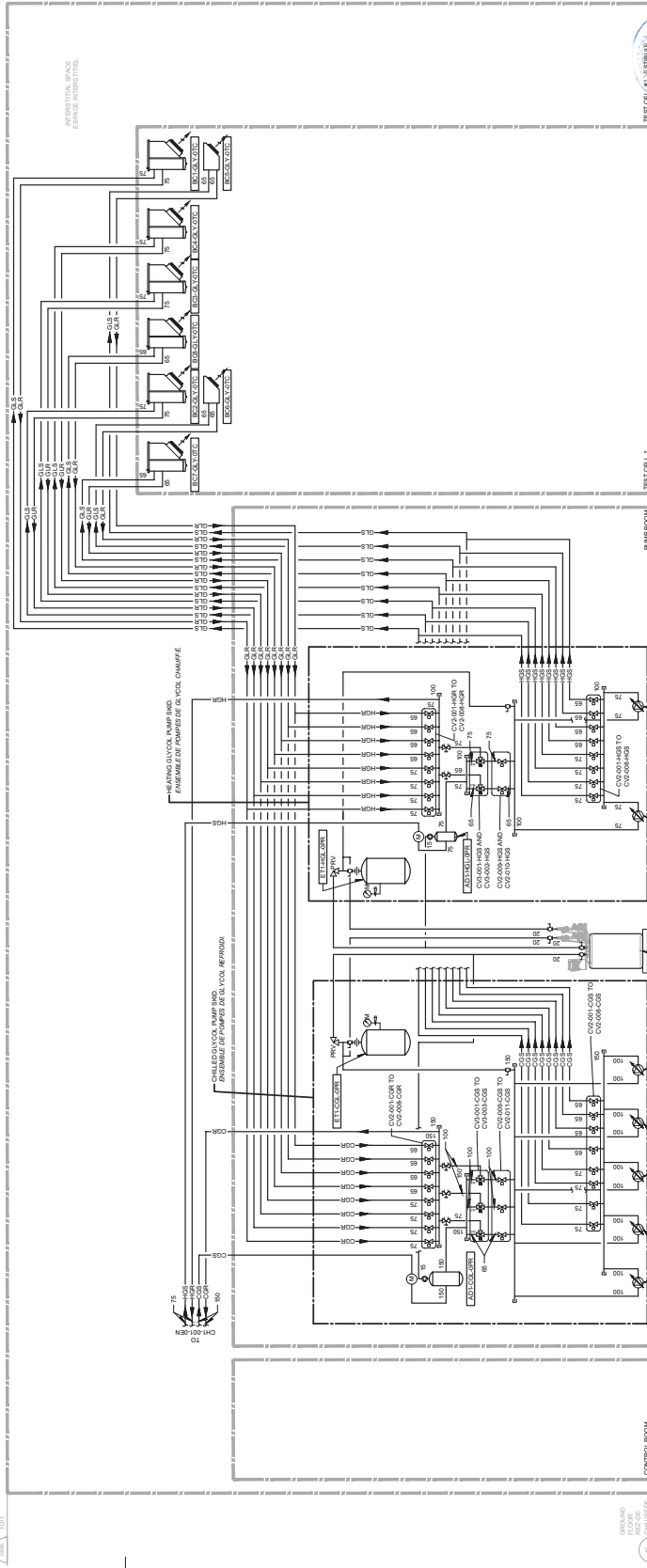
HEATING AND COOLING SYSTEM SCHEMATIC

1 SCHEMA DES SYSTEMES DE CHAUFFAGE ET REFOUILLISSEMENT





1 SCHEMA DU SYSTEME DE CHAUFFAGE ET REFROIDISSEMENT - EXTERIEUR



HEATING AND COOLING SYSTEM SCHEMATIC - INTERIOR

2 SCHEMA DU SYSTEME DE CHAUFFAGE ET REFROIDISSEMENT - INTERIEUR

M 316 SCALE/ECHELLE = N.T.S.