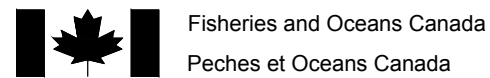


BIG QUALICUM HATCHERY - NEW VEHICLE STORAGE / OFFICE BUILDING

RIVER ROAD & HORNE LAKE ROAD
QUALICUM BAY, BC



ARCHITECTURAL

A1.1 - SITE PLAN
A2.1 - ELEVATIONS



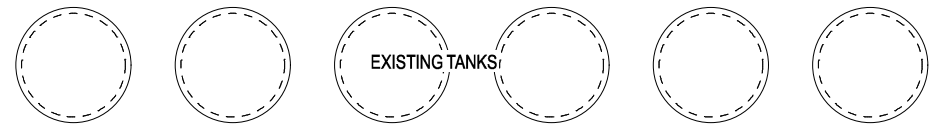
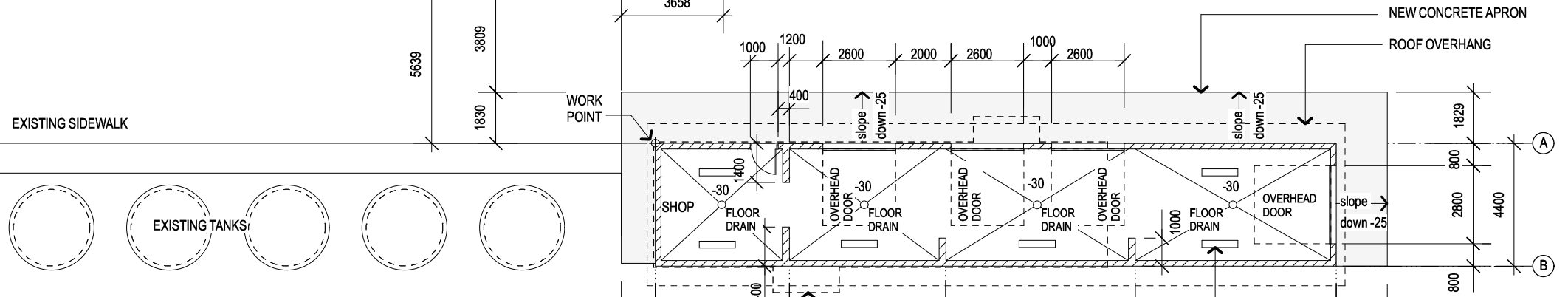
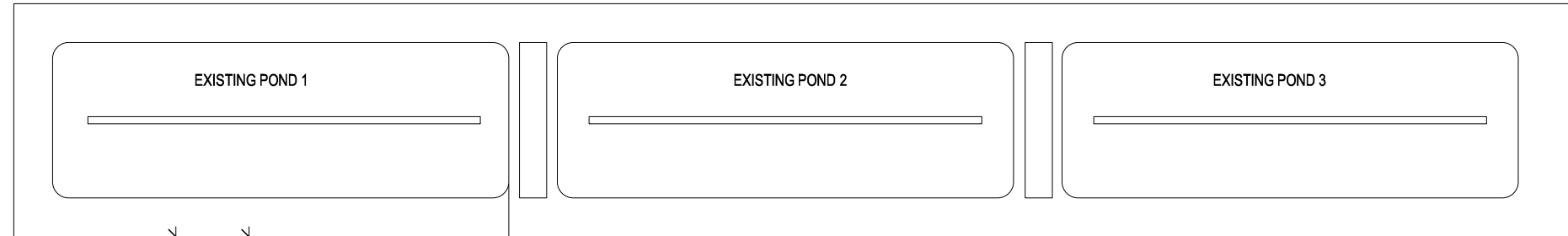
STRUCTURAL

S0.1 - STRUCTURAL
NOTES & DRAWING LIST
S0.2 - STRUCTURAL NOTES &
ABBREVIATIONS
S1.1 - BUILDING LAYOUT
S2.1 - SECTIONS AND DETAILS
S2.2 - SECTIONS AND DETAILS
S2.3 - SECTIONS AND DETAILS



MECHANICAL

M0.1 - LEGEND & DRAWING LIST
M1.1 - PLUMBING
M2.1 - HVAC
M2.2 - DETAILS
M3.1 - ELEVATIONS & SECTIONS



EXISTING SIDEWALK

WORK POINT

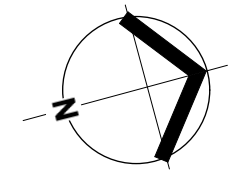
LINES SHOW EXISTING STORAGE BUILDING TO BE DEMOLISHED BY THIS CONTRACT

GEOTECHNICAL TO DETERMINE BANK STABILITY CONTRACTED BY CLIENT NOT IN THIS CONTRACT

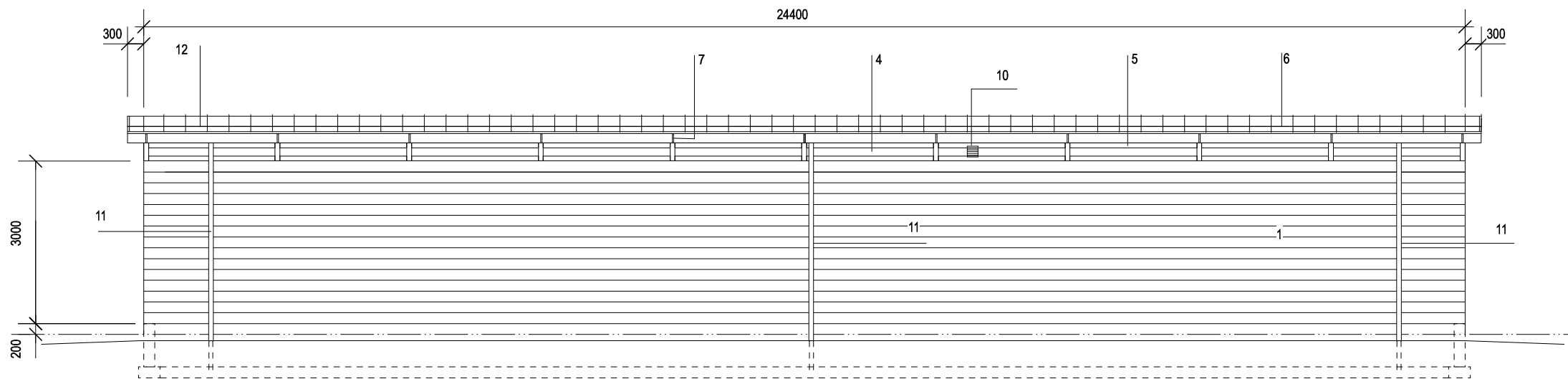
BIG QUALICUM RIVER

EXISTING COUNTING FENCE

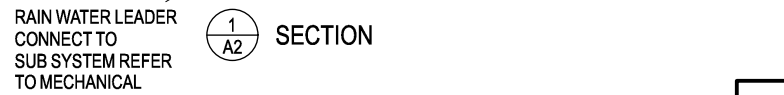
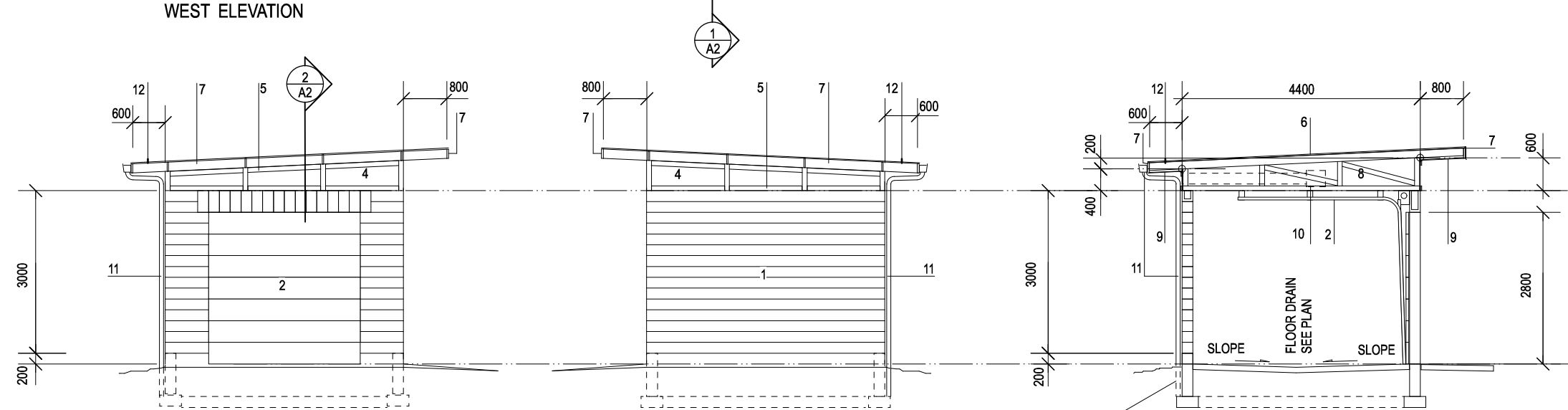
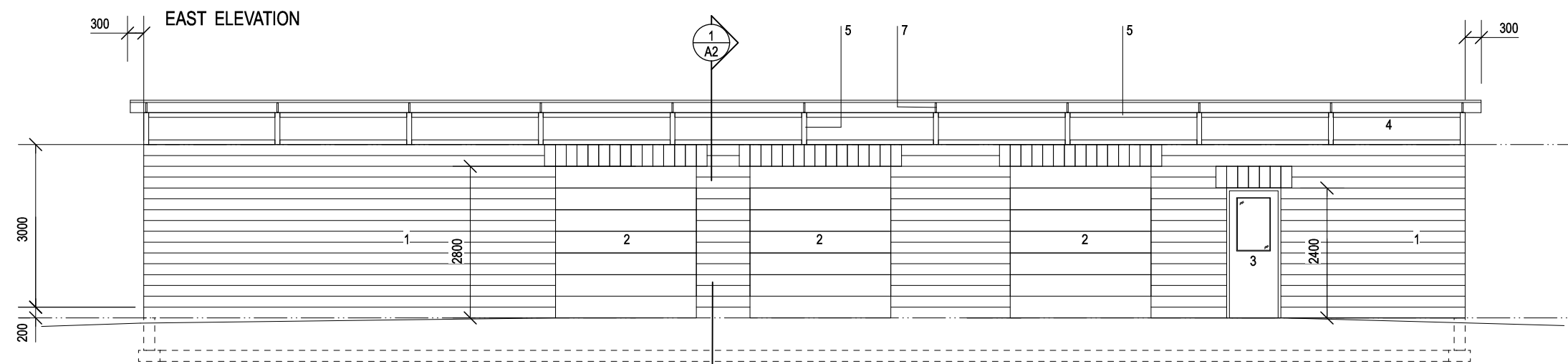
BIG QUALICUM RIVER



| | |
|--|--|
| SITE / FLOOR PLAN 1:200 | numberTEN <small>number 10</small> architectural group |
| PROJECT ADDRESS BIG QUALICUM FISH HATCHERY ISSUED TENDER DEC 15-2015 | A1.1 2 |



- KEY NOTES
- 1 SPLIT FACE CONCRETE BLOCK
 - 2 PREFINISHED METAL LOW HEAD ROOM SECTIONAL OVERHEAD DOOR UNINSULATED
 - 3 PAINTED PRESSED STEEL FRAME PAINTED HOLLOW METAL DOOR
 - 4 PAINTED CEMENT BOARD ON MEMBRANE UNDERLAYMENT ON PLYWOOD SHEATHING PER STRUCTURAL
 - 5 PAINTED 20 X 89 CEMENT BOARD HORIZONTAL AND VERTICAL TRIM BATTEN
 - 6 GALVALUME STANDING SEAM METAL ROOFING MONOFILIMENT VENT MAT SELF ADHESIVE SANDED MEMBRANE UNDERLAYMENT
 - 7 PREFINISHED METAL FASCIA VERTICAL S-LOCK AT JOINTS TO MATCH WITH VERTICAL CEMENT TRIM BATTENS
 - 8 MONO PITCH WOOD TRUSS ENGINEERED
 - 9 PAINTED CEMENT BOARD PERFORATED VENTED SOFFIT
 - 10 VENTILATION UNIT WITH SHEET METAL DUCTING TO DAMPERED GRILLE
 - 11 125MM PREFINISHED METAL GUTTER AND RAIN WATER LEADER COLOUR TO MATCH ROOFING
 - 12 SNOW GUARD
 - 13 PREFINISHED FLASHING



| | |
|--|---|
| ELEVATIONS/SECTION 1:100 | numberTEN architectural group |
| PROJECT ADDRESS BIG QUALICUM FISH HATCHERY ISSUED TENDER DEC 15-2015 | A2.1 2 |

GENERAL NOTES

- CONTRACTOR TO VERIFY ALL DIMENSIONS FOR BUILDING (INCLUDING EXISTING STRUCTURAL MEMBER SIZES) PRIOR TO COMMENCEMENT OF WORK AND NOTIFY ENGINEER OF ANY DISCREPANCIES.
- ALL DIMENSIONS ARE IN MILLIMETERS UNLESS OTHERWISE INDICATED.
- ALL ELEVATIONS ARE IN METERS UNLESS OTHERWISE INDICATED.
- STRUCTURAL DRAWINGS SHOW THE COMPLETED PROJECT. THEY DO NOT SHOW COMPONENTS WHICH MAY BE NECESSARY FOR CONSTRUCTION SAFETY. CONTRACTOR IS RESPONSIBLE FOR SAFETY ON AND ABOUT THE JOB SITE DURING CONSTRUCTION.
- CONTRACTOR TO ENSURE THAT ALL WORK IS CARRIED OUT BY THE RULES AND CUSTOMS OF THE BEST TRADE PRACTICES AND THEIR SPECIFICATIONS BY SKILLED TRADES PEOPLE KNOWLEDGEABLE OF THE TYPE OF CONSTRUCTION. THEY ARE TO BE PROPERLY EQUIPPED AND SUPERVISED.
- NOTIFY WSP 24 HOURS IN ADVANCE FOR CONSTRUCTION REVIEW OF THE STRUCTURAL PORTION OF THE BUILDING AS SHOWN ON THE STRUCTURAL DRAWINGS IN ACCORDANCE WITH DIVISION C PART 2 OF THE NATIONAL BUILDING CODE OF CANADA 2010.
- SEE ARCHITECTURAL, ELECTRICAL, AND MECHANICAL DRAWINGS FOR SLEEVES, INSERTS, ETC. TO BE ENCASED IN CONCRETE.
- THESE STRUCTURAL DRAWINGS DO NOT INCLUDE DETAILS FOR BUILDING ENVELOPE, WATER PROOFING AND DRAINAGE. SEE ARCHITECTURAL, MECHANICAL, ELECTRICAL AND CIVIL ENGINEERING DRAWINGS AS APPROPRIATE.
- STRUCTURAL DESIGN DATA.
 - ENGINEER OF RECORD: JIM GALLOWAY, P.ENG
 - DESIGN CODE - NATIONAL BUILDING CODE OF CANADA 2010.

| | | | | |
|--|------------------------|--------------------------------------|-----------------|-----------------|
| DESIGN PARAMETERS | QUALICUM BEACH | | | |
| BUILDING IMPORTANCE CATEGORY | NORMAL | | | |
| SNOW LOAD PARAMETERS | | | | |
| Ss = 2.2 kPa | Sr = 0.40 kPa | Is [ULS] = 1.0 | Is [SLS] = 0.9 | |
| WIND LOAD PARAMETERS | | | | |
| q50 = 0.53 kPa | q10 = 0.41 kPa | Iw [ULS] = 1.0 | Iw [SLS] = 0.75 | |
| SEISMIC PARAMETERS | | | | |
| Sa(0.2) = 0.82 | Sa(0.5) = 0.58 | Sa(1.0) = 0.31 | Sa(2.0) = 0.17 | PGA = 0.39 |
| Ie = 1.0 | | | | |
| SITE CLASS: D (ASSUMED) | | | | |
| SFERS CONVENTIONAL CONSTRUCTION CONCRETE BLOCK SHEAR WALLS | | | | |
| NORTH / SOUTH DIRECTION | | Rd = 1.5 | Ro = 1.5 | |
| SFERS MODERATELY DUCTILE CONCRETE BLOCK SHEAR WALLS | | | | |
| EAST / WEST DIRECTION | | Rd = 2.0 | Ro = 1.5 | |
| ANALYSIS METHOD: EQUIVALENT STATIC ANALYSIS | | | | |
| DESIGN LOADS | | | | |
| GRAVITY | | | | |
| | SNOW (kPa) | LIVE (kPa) | DEAD (kPa) | PARTITION (kPa) |
| ROOF | 2.16 +ACCUMULATIONS | - | 0.72 | - |
| MAIN FLOOR | - | 4.8 | - | 1.0 |
| LATERAL - WIND | | | | |
| DESIGN PRESSURE FOR EXTERIOR DOORS AND WINDOWS | | | | |
| STRENGTH 1.5 kPa | | DEFLECTION LIMIT SPAN/240 (TYP. U/N) | | |

REINFORCED MASONRY NOTES

- MATERIAL AND CONSTRUCTION METHODS TO BE IN ACCORDANCE WITH THE CURRENT NATIONAL BUILDING CODE OF CANADA, AND THE FOLLOWING CSA STANDARDS: CSA-S304 "DESIGN OF MASONRY STRUCTURES", A370 "CONNECTORS FOR MASONRY", AND A371 "MASONRY CONSTRUCTION FOR BUILDINGS"
- CONCRETE BLOCK UNITS TO BE MINIMUM H/15/A/M CONFORMING TO THE REQUIREMENTS OF CSA CAN3- A165 SERIES.
- USE TYPE 'S' MORTAR, CONFORMING TO CSA A179.
- MASONRY WIRE REINFORCING TO CONFORM TO CSA A30.5-M1983.
- 200mm [8"] MASONRY WALL REINFORCING TO BE AS FOLLOWS, UNLESS OTHERWISE SHOWN:
 - VERTICAL:
 - 1-15M AT 1000mm [3'-4"] 1-15M AT CORNERS, INTERSECTIONS, BOTH SIDES OF CONTROL JOINTS, ENDS OF WALLS, BOTH SIDES OF OPENINGS, LAP 600mm [24"]
 - HORIZONTAL:
 - 1-15M (20M) CONTINUOUS IN BOND BEAMS AS NOTED ON THE PLANS. LAP 800mm [32"]. 3.75mm [9 Ga] DIAMETER LADDER TYPE REINFORCING AT 400mm [16"] ON CENTER, LAP 200mm [8"].
 - 1-15M BOT OF OPENING IN 200mm [8"] DP BOND BEAM EXTENDING 600mm [24"] PAST OPENING
- PROVIDE DOWELS IN CONCRETE TO MATCH MASONRY WALL REINFORCING.
- KEEP CELLS TO BE FILLED WITH CONCRETE CLEAN OF MORTAR.
- PROVIDE CLEAN OUTS FOR CELLS TO BE POURED IN LIFTS OVER 1500mm [5'-0"] HIGH.
- FILL CELLS CONTAINING VERTICAL REINFORCING AND BOLTS WITH CONCRETE AS SPECIFIED IN CONCRETE NOTES. PUDDLE OR VIBRATE TO COMPLETELY FILL CELLS.
- INSTALL CONTROL JOINTS IN WALLS AS NOTED ON THE PLANS.
- CONCRETE BLOCK MASONRY WALLS TO BE LAID IN RUNNING BOND. CORNER WALLS TO HAVE ALTERNATE COURSING FOR FULL MASONRY BOND.
- BOND BEAMS TO BE SPACED AS SHOWN ON THE PLANS AND BE SPECIAL BOND BEAM UNITS WHICH PROVIDE CONTINUITY OF REINFORCING. USE GALVANIZED EXPANDED METAL LATH TO FORM UNDERSIDE OF BOND BEAMS.
- BOND BEAM REINFORCING TO BE CONTINUOUS THROUGH CONTROL JOINTS UNLESS NOTED OTHERWISE.
- DO NOT CROSS CONTROL JOINTS WITH HORIZONTAL LADDER TYPE REINFORCING.
- HORIZONTAL WALL REINFORCING TO BE CONTINUOUS AT CORNERS AND INTERSECTIONS EXCEPT AS IN NOTES #14 AND #15 IN THIS SECTION.


INTERIOR & EXTERIOR SLAB ON GRADE NOTES

- SLAB THICKNESS AS INDICATED ON DRAWINGS.
- CONDUITS IN SLAB:
 - SIZE - OUTSIDE DIAMETER NOT GREATER THAN 0.25 X SLAB THICKNESS
 - CONDUITS GREATER THAN 0.25 X SLAB THICKNESS TO BE BURIED BELOW SLAB OR INCREASE SLAB THICKNESS TO MAINTAIN SLAB DEPTH OVER CONDUITS
 - CONDUITS WITHIN SLAB TO BE PLACED ON TOP OF VAPOUR BARRIER AND BELOW REINFORCING
 - CONDUITS TO BE IN ONE LAYER ONLY
 - CONDUITS TO BE SPACED NOT CLOSER THAT 4 X OUTSIDE DIAMETER

DRAWING LIST

| | |
|------|----------------------------------|
| S0.1 | STRUCTURAL NOTES & DRAWING LIST |
| S0.2 | STRUCTURAL NOTES & ABBREVIATIONS |
| S1.1 | BUILDING LAYOUT |
| S2.1 | SECTIONS AND DETAILS |
| S2.2 | SECTIONS AND DETAILS |
| S2.3 | SECTIONS AND DETAILS |

DO NOT SCALE DRAWINGS

| | | | | | | | | | | | | |
|--|---|--|--|-----|-----------------------|------------|-------------------------|-----|---|------------|---------------------------|--------------|
| Client/client Fisheries and Oceans Canada Peches et Oceans Canada | Project title/Titre du projet QUALICUM BAY, BC RIVER RD & HORNE LAKE RD STORAGE BUILDING REPLACEMENT |  SUITE 400-401 GARBALLY ROAD VICTORIA (BRITISH COLUMBIA) CANADA V8T 5M3 TEL.: 250-384-5510 FAX: 250-386-2844 WWW.WSPGROUP.COM | Drawing title/Titre du dessin STRUCTURAL NOTES & DRAWING LIST | 1 | ISSUED FOR TENDER | 2015.12.15 | Approved by/Approve par | -- | PWGSC Project Manager/Administrateur de Projets TPSGC | -- | Project No./No. du projet | 131-19104-13 |
| | | | | 0 | ISSUED FOR 90% REVIEW | 2015.10.27 | Designed by/Concept par | JWG | PWGSC, Architectural and Engineering Resources Manager/Ressources Architectural et de Directeur d'Ingénierie, TPSGC | -- | Sheet/Feuille | S0.1 |
| | | | | Rev | Description | | Drawn by/Dessine par | GM | Date/Date | 2015/10/15 | 1 OF 6 | |

FOUNDATION NOTES

- FOOTINGS HAVE BEEN DESIGNED FOR FACTORED BEARING RESISTANCES OF 144 kPa AND 216 kPa FOR SLS AND ULS, RESPECTIVELY, TO BE VERIFIED BY GEOTECHNICAL ENGINEER PRIOR TO CONSTRUCTION.
- BEARING SURFACES MUST BE APPROVED BY THE GEOTECHNICAL ENGINEER PRIOR TO FOOTING CONCRETE BEING PLACED. WSP IS NOT RESPONSIBLE FOR CONFIRMING BEARING CAPACITIES OF SOILS.
- UNLESS OTHERWISE SHOWN, CENTER FOOTINGS UNDER COLUMNS AND WALLS.
- PROVIDE 50mm [2"] GROUND SEAL UNDER FOOTINGS WHERE REQUIRED BY SOIL CONDITIONS.
- FOR GROUND ELEVATIONS AND DRAINAGE SLOPES, SEE ARCHITECT'S DRAWINGS.
- VARY FOOTING ELEVATIONS WHERE REQUIRED IN ACCORDANCE WITH DETAIL FOR "TYPICAL STEPPED FOOTING", SHOWN ON DRAWINGS.
- FOOTINGS MAY HAVE TO BE LOWERED TO ACCOMMODATE MECHANICAL OR ELECTRICAL SERVICES. SEE MECHANICAL AND ELECTRICAL DRAWINGS FOR ELEVATIONS OF SAME. DO NOT UNDERMINE FOOTINGS BY EXCAVATIONS FOR SERVICES, PITS, ETC.
- FOOTINGS ELEVATIONS, IF SHOWN, ARE FOR BIDDING PURPOSES ONLY, ARE NOT FINAL, AND MAY VARY ACCORDING TO SITE CONDITIONS. ALL FOOTINGS MUST BE TAKEN TO A BEARING LAYER APPROVED BY THE GEOTECHNICAL ENGINEER
- PROTECT BEARING SURFACES FROM FREEZING BEFORE AND AFTER FOOTINGS ARE POURED.
- SUB-BASE DESIGN OF SOIL UNDER THE SLAB ON GRADE AS DIRECTED BY THE GEOTECHNICAL ENGINEER.

PREFABRICATED GANG NAIL TYPE WOOD TRUSSES

- TRUSSES ARE TO BE DESIGNED FOR SUPERIMPOSED LOADS AS SHOWN ON THE DRAWINGS, BY THE COMPONENT DESIGN METHODS, AND FOR LSD STRESSES REQUIRED BY PART 4 OF THE NATIONAL BUILDING CODE OF CANADA AND CSA 086.1. ROOF TRUSSES ARE TO BE DESIGNED FOR SNOW ACCUMULATIONS IN ACCORDANCE WITH THE SUPPLEMENT TO THE NATIONAL BUILDING CODE. SUBMIT DESIGN CRITERIA AND RECEIVE APPROVAL FROM THE ENGINEER OF RECORD
- SEE ARCHITECTURAL AND MECHANICAL DRAWINGS FOR ROOF SLOPES, CEILINGS, GUTTERS, DUCT WORK, ETC.
- DESIGN ALL TRUSS TO GIRDER TRUSS CONNECTIONS AND PROVIDE FOR, AND SHOW, CONNECTION OF OTHER BEAM AND PURLIN CONNECTIONS TO TRUSSES. SHOP DRAWINGS TO INDICATE POSITION OF HANGERS AND CONNECTORS, AND TRUSS MANUFACTURER IS TO PROVIDE COMPLETE SHOP DRAWINGS FOR ENGINEERED HANGERS. TRUSS MANUFACTURER IS TO INDICATE AND DETAIL ALL WEB AND CHORD BRACING ON LAYOUT DRAWINGS AS WELL AS LATERAL BRACING REQUIRED AT BEARING POINTS.

PLYWOOD SHEATHING NOTES

- PLYWOOD SHEATHING TO BE:
SEE SPECIFICATIONS FOR SHEATHING GRADE.
- FACE GRAIN OF PLYWOOD SHEATHING TO BE PERPENDICULAR TO SUPPORTING TRUSSES.
- END JOINTS IN ADJACENT SHEATHING SHEETS TO BE STAGGERED 1200 [4'-0"].
- END JOINTS OF SHEATHING TO BEAR ON SUPPORTING JOISTS OR STUDS AND BUTT ALONG THEIR CENTER LINES SUCH THAT NAIL EDGE DISTANCE IS NOT LESS THAN 12.5mm [1/2"].
- FASTEN SHEATHING WITH GALVANIZED COMMON NAILS AT 150mm ON CENTER ALONG ALL EDGES SUPPORTED ON FRAMING, ALL BLOCKING, AND TOP AND BOTTOM PLATES OF STUD WALLS, UNLESS OTHERWISE SHOWN.
- FASTEN SHEATHING AT 300mm ON CENTER ALONG INTERMEDIATE BEARINGS.
- STAPLES ARE NOT PERMITTED.
- FASTENERS FOR SHEATHING TO MEET THE FOLLOWING ADDITIONAL REQUIREMENTS, UNLESS OTHERWISE SHOWN:

| | | | |
|----------------------|--------|--------|--------|
| SHEATHING THICKNESS | 12.5mm | 16mm | 19mm |
| NAIL LENGTH: | 64mm | 64mm | 64mm |
| NAIL DIAMETER (MIN): | 3.25mm | 3.25mm | 3.33mm |

CONCRETE AND REINFORCING NOTES

- REFER TO PROJECT SPECIFICATIONS FOR CONCRETE STRENGTH, TYPE, SLUMP, MAXIMUM AGGREGATE SIZE, CLASS OF EXPOSURE AND OTHER PERFORMANCE REQUIREMENTS.
- REINFORCEMENT TO BE BILLET STEEL CONFORMING TO THE REQUIREMENTS OF THE FOLLOWING CSA STANDARDS:
CSA G30.18(R) GRADE 400 ALL REINFORCING U/N
- CONCRETE PROTECTION ON PRINCIPAL REINFORCING SHALL BE AS FOLLOWS:
SURFACES PLACED IN CONTACT WITH GROUND: 75mm [3"]
FORMED SURFACES EXPOSED TO GROUND OR WEATHER: 50mm [2"]
BEAMS AND COLUMNS: 50mm [2"]
COLUMN TIES AND BEAM STIRRUPS: 40mm [1 1/2"]
- HORIZONTAL WALL REINFORCING SHALL BE CONTINUOUS AROUND CORNERS AND HOOKED AT WALL INTERSECTIONS. UNLESS OTHERWISE NOTED, HOOK AND LAP LENGTHS AS FOLLOWS:


| BAR SIZE | VERT LAP | HORIZ LAP | HOOK LENGTH |
|----------|-------------|--------------|-------------|
| 10M | 430mm [17"] | 500mm [20"] | 180mm [7"] |
| 15M | 600mm [24"] | 800mm [32"] | 250mm [10"] |
| 20M | 750mm [30"] | 1000mm [40"] | 300mm [12"] |

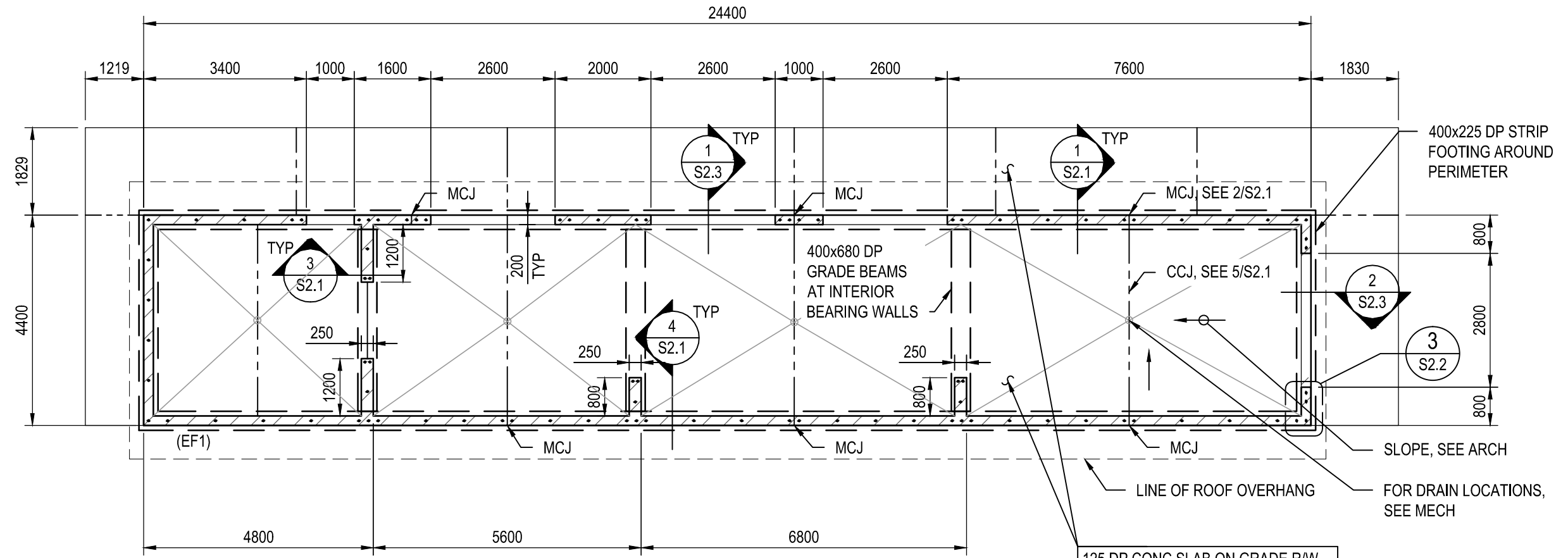
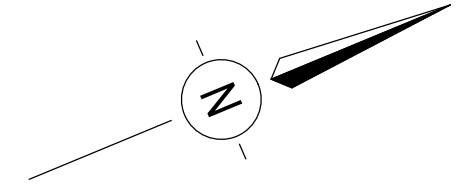
- ALL CONCRETE IS TO BE VIBRATED.

ABBREVIATIONS:

| | |
|--------|-----------------------------|
| AB | - ANCHOR BOLT |
| APPROX | - APPROXIMATELY |
| ARCH | - ARCHITECT |
| BOT | - BOTTOM |
| BLDG | - BUILDING |
| BS | - BOTH SIDES |
| BTWN | - BETWEEN |
| CCJ | - CRACK CONTROL JOINT |
| CONC | - CONCRETE |
| CONT | - CONTINUOUS |
| CP | - COMPLETE PENETRATION WELD |
| C/W | - COMPLETE WITH |
| DBL | - DOUBLE |
| DP | - DEEP |
| DWG | - DRAWING |
| EF | - EACH FACE |
| EL | - ELEVATION |
| ES | - EACH SIDE |
| EW | - EACH WAY |
| FTG | - FOOTING |
| GALV | - GALVANIZED |
| HORIZ | - HORIZONTAL |
| LG | - LONG |
| LLV | - LONG LEG VERTICAL |
| MCJ | - MASONRY CONTROL JOINT |
| MECH | - MECHANICAL |
| NTS | - NOT TO SCALE |
| OC | - ON CENTER |
| PLY | - PLYWOOD |
| R/W | - REINFORCE WITH |
| REINF | - REINFORCEMENT |
| REQ'D | - REQUIRED |
| SOG | - SLAB ON GRADE |
| STD | - STANDARD |
| TYP | - TYPICAL |
| U/N | - UNLESS NOTED |
| UNO | - UNLESS NOTED OTHERWISE |
| U/S | - UNDERSIDE |
| VB | - VAPOUR BARRIER |
| VERT | - VERTICAL |

DO NOT SCALE DRAWINGS

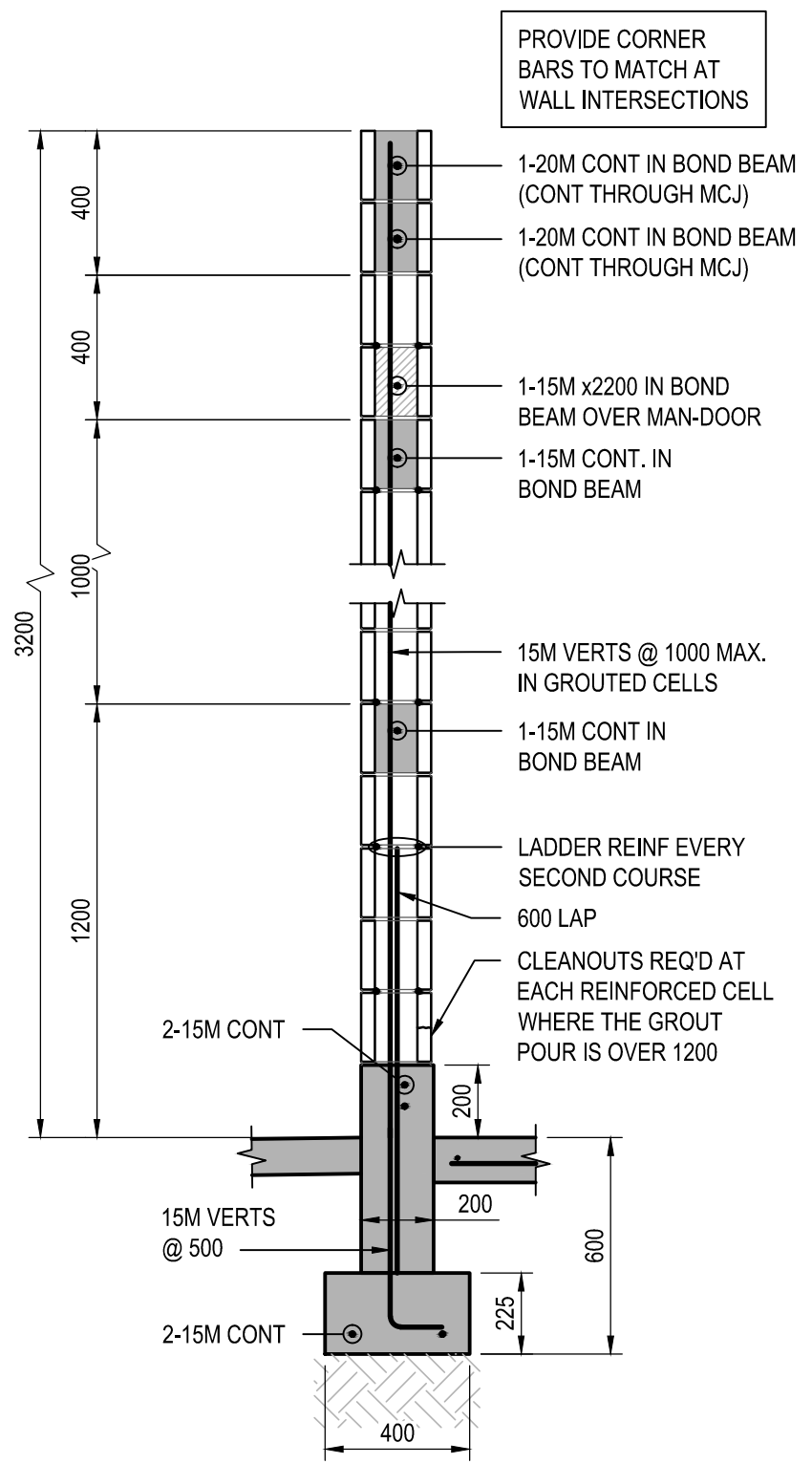
| | | | | | | | | | |
|--|---|--|---|-----|-----------------------|------------|--------------------------------|--|---|
| Client/client Fisheries and Oceans Canada Peches et Oceans Canada | Project title/Titre du projet QUALICUM BAY, BC RIVER RD & HORNE LAKE RD STORAGE BUILDING REPLACEMENT |  SUITE 400-401 GARBALLY ROAD VICTORIA (BRITISH COLUMBIA) CANADA V8T 5M3 TEL.: 250-384-5510 FAX: 250-386-2844 WWW.WSPGROUP.COM | Drawing title/Titre du dessin STRUCTURAL NOTES & ABBREVIATIONS | 1 | ISSUED FOR TENDER | 2015.12.15 | Approved by/Approve par -- | PWGSC Project Manager/Administrateur de Projets TPSGC -- | Project No./No. du projet 131-19104-13 |
| | | | | 0 | ISSUED FOR 90% REVIEW | 2015.10.27 | Designed by/Concept par JWG | PWGSC, Architectural and Engineering Resources Manager/ Ressources Architectural et de Directeur d'Ingénierie, TPSGC -- | Sheet/Feuille S0.2 |
| | | | | Rev | Description | | Drawn by/Dessine par GM | Date/Date 2015/10/15 | 2 OF 6 |



1 BUILDING LAYOUT
SCALE: 1:100

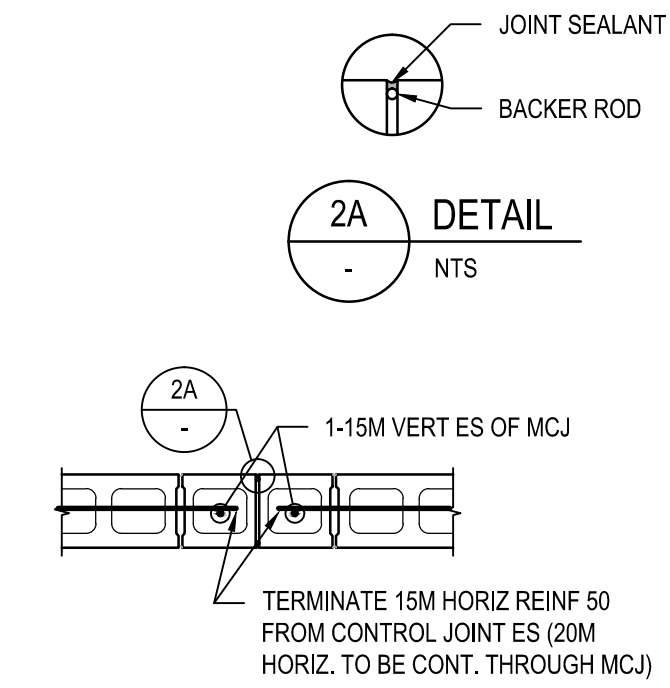
DO NOT SCALE DRAWINGS

| | | | | | | |
|---|--|--|---|---------------------------------------|---|--|
| Client/client Fisheries and Oceans Canada Peches et Oceans Canada | Project title/Titre du projet QUALICUM BAY, BC RIVER RD & HORNE LAKE RD STORAGE BUILDING REPLACEMENT | SUITE 400-401 GARBALLY ROAD VICTORIA (BRITISH COLUMBIA) CANADA V8T 5M3 TEL.: 250-384-5510 FAX: 250-386-2844 WWW.WSPGROUP.COM | Drawing title/Titre du dessin BUILDING LAYOUT | Approved by/Approve par -- | PWGSC Project Manager/Administrateur de Projets TPSGC -- | Project No./No. du projet 131-19104-13 |
| | | | | 1 ISSUED FOR TENDER 2015.12.15 | Designed by/Concept par JWG | PWGSC, Architectural and Engineering Resources Manager/ Ressources Architectural et de Directeur d'Ingénierie, TPSGC -- |
| | | | | 0 ISSUED FOR 90% REVIEW 2015.10.27 | Drawn by/Dessine par GM | Date/Date 2015/10/15 |
| | | | | Rev Description | 3 OF 6 | |

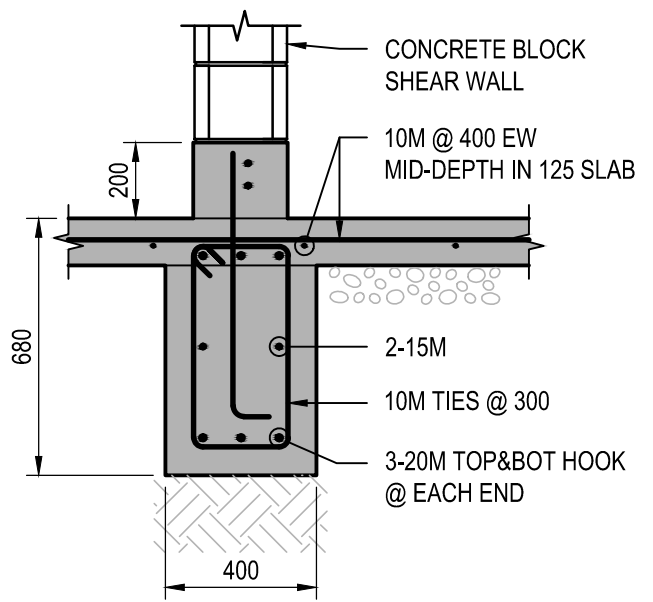


1 WALL SECTION
S1.1 1:20

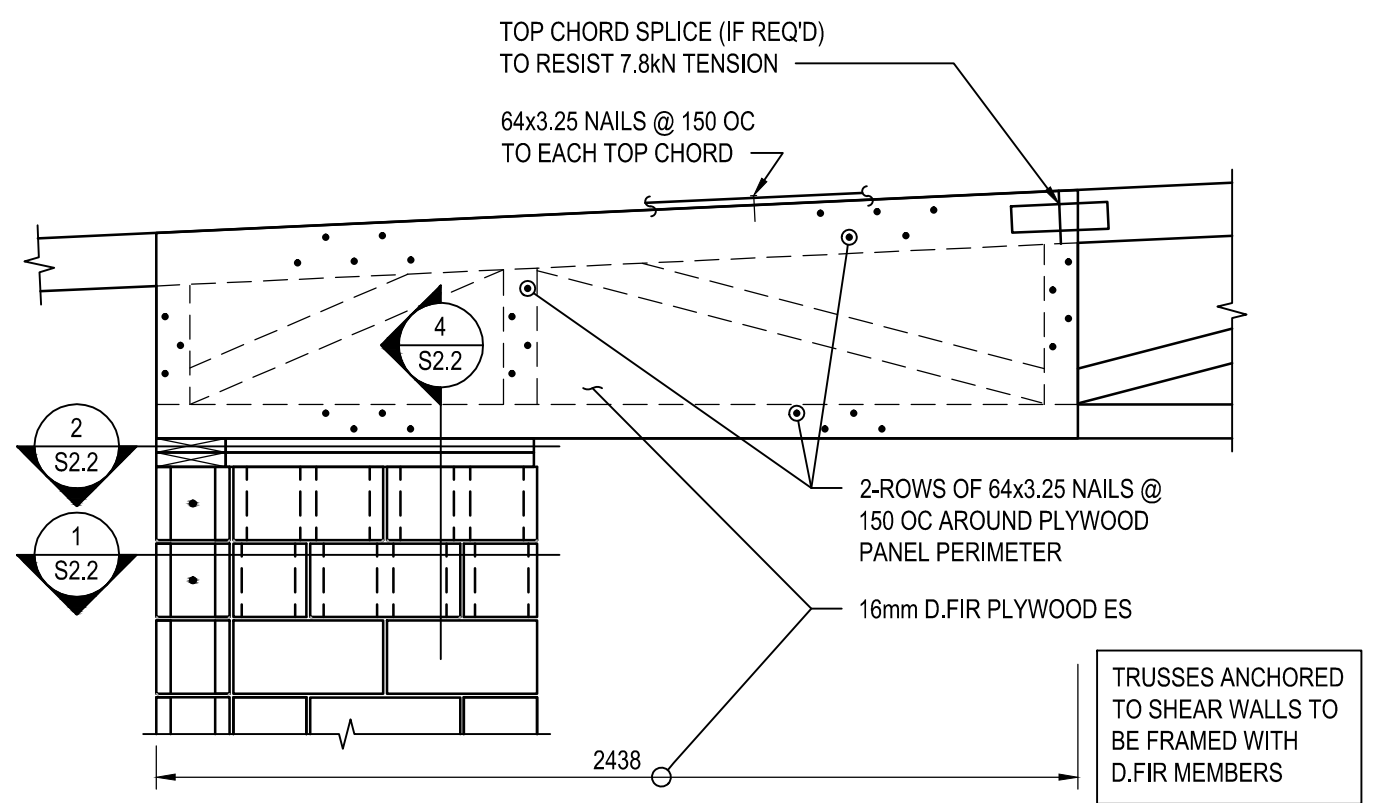
PROVIDE CORNER BARS TO MATCH AT WALL INTERSECTIONS



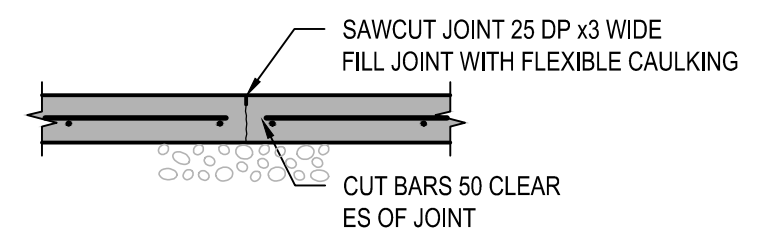
2 TYPICAL MASONRY CONTROL JOINT
S1.1 1:20



3 GRADE BEAM SECTION
S1.1 1:20



4 TRUSS SUPPORT SECTION
S1.1 1:20



5 CONTROL JOINT DETAIL
S1.1 1:20

DO NOT SCALE DRAWINGS

Client/client
Fisheries and Oceans Canada
Peches et Oceans Canada

Project title/Titre du projet
QUALICUM BAY, BC
RIVER RD & HORNE LAKE RD
STORAGE BUILDING REPLACEMENT

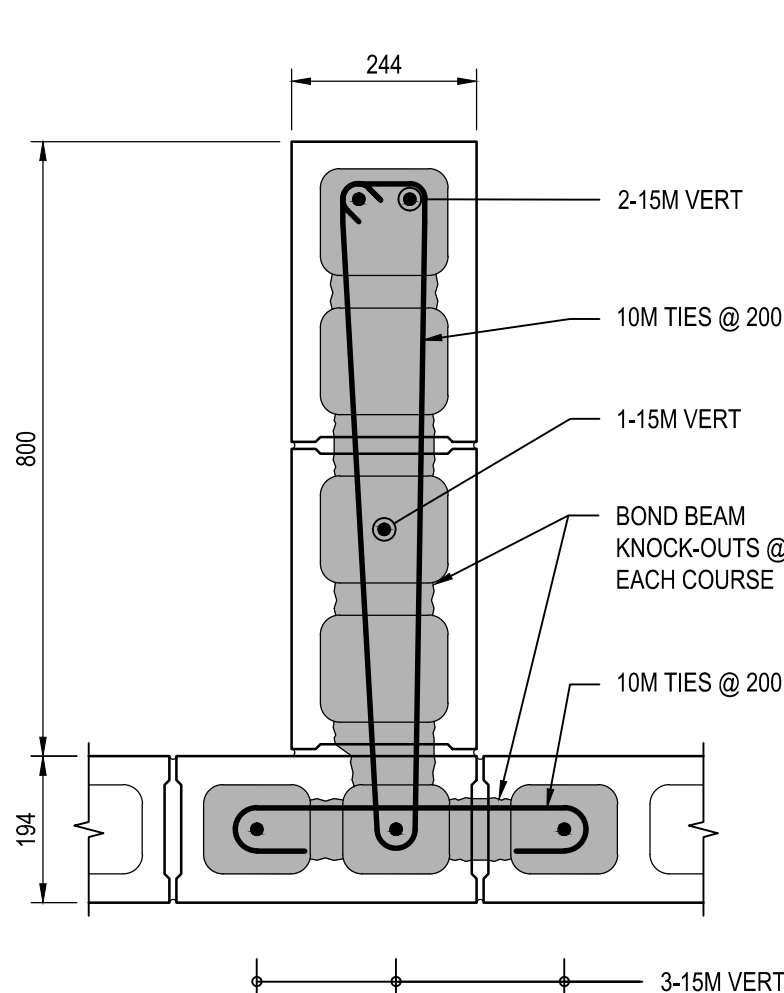
SUITE 400-401 GARBALLY ROAD
VICTORIA (BRITISH COLUMBIA) CANADA V8T 5M3
TEL.: 250-384-5510 | FAX: 250-386-2844 | WWW.WSPGROUP.COM

Drawing title/Titre du dessin
SECTIONS AND DETAILS

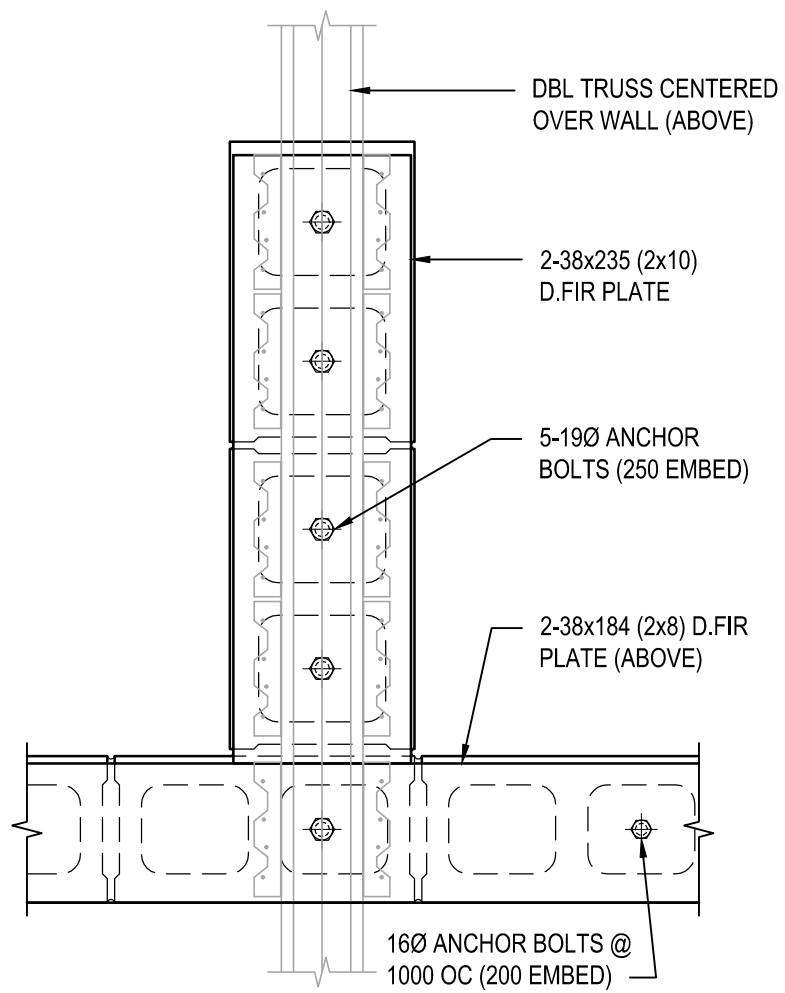
| | | |
|-----|-----------------------|------------|
| 1 | ISSUED FOR TENDER | 2015.12.15 |
| 0 | ISSUED FOR 90% REVIEW | 2015.10.27 |
| Rev | Description | |

| | |
|-------------------------|---|
| Approved by/Approve par | PWGSC Project Manager/Administrateur de Projets TPSGC |
| Designed by/Concept par | PWGSC, Architectural and Engineering Resources Manager/Ressources Architectural et de Directeur d'Ingénierie, TPSGC |
| Drawn by/Dessine par | GM |
| Date/Date | 2015/10/15 |

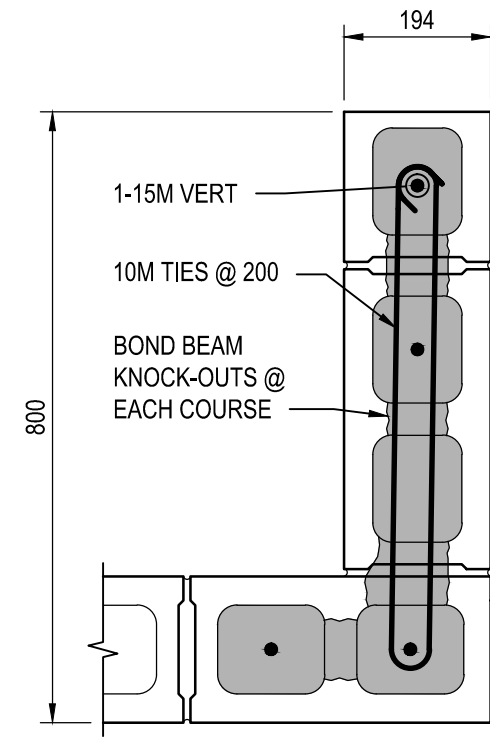
| | |
|---------------------------|--------------|
| Project No./No. du projet | 131-19104-13 |
| Sheet/Feuille | S2.1 |
| Revision/Revision | 1 |
| | 4 OF 6 |



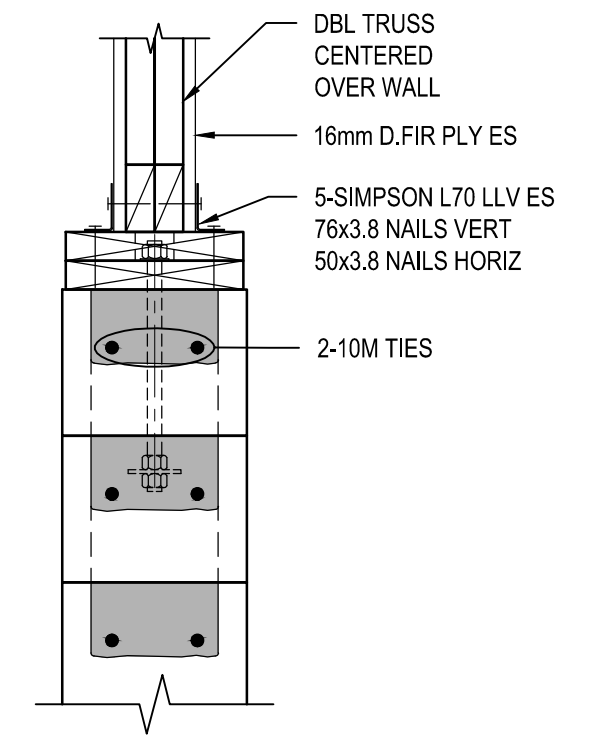
1 SHEAR WALL SECTION
S2.1 1:10



2 SHEAR WALL AB SECTION
S2.1 1:10



3 SECTION
S2.1 1:10



4 TRUSS SUPPORT SECTION
S2.1 1:10

DO NOT SCALE DRAWINGS

Client/client
Fisheries and Oceans Canada
Peches et Oceans Canada

Project title/Titre du projet
QUALICUM BAY, BC
RIVER RD & HORNE LAKE RD
STORAGE BUILDING REPLACEMENT

WSP
SUITE 400-401 GARBALLY ROAD
VICTORIA (BRITISH COLUMBIA) CANADA V8T 5M3
TEL.: 250-384-5510 | FAX: 250-386-2844 | WWW.WSPGROUP.COM

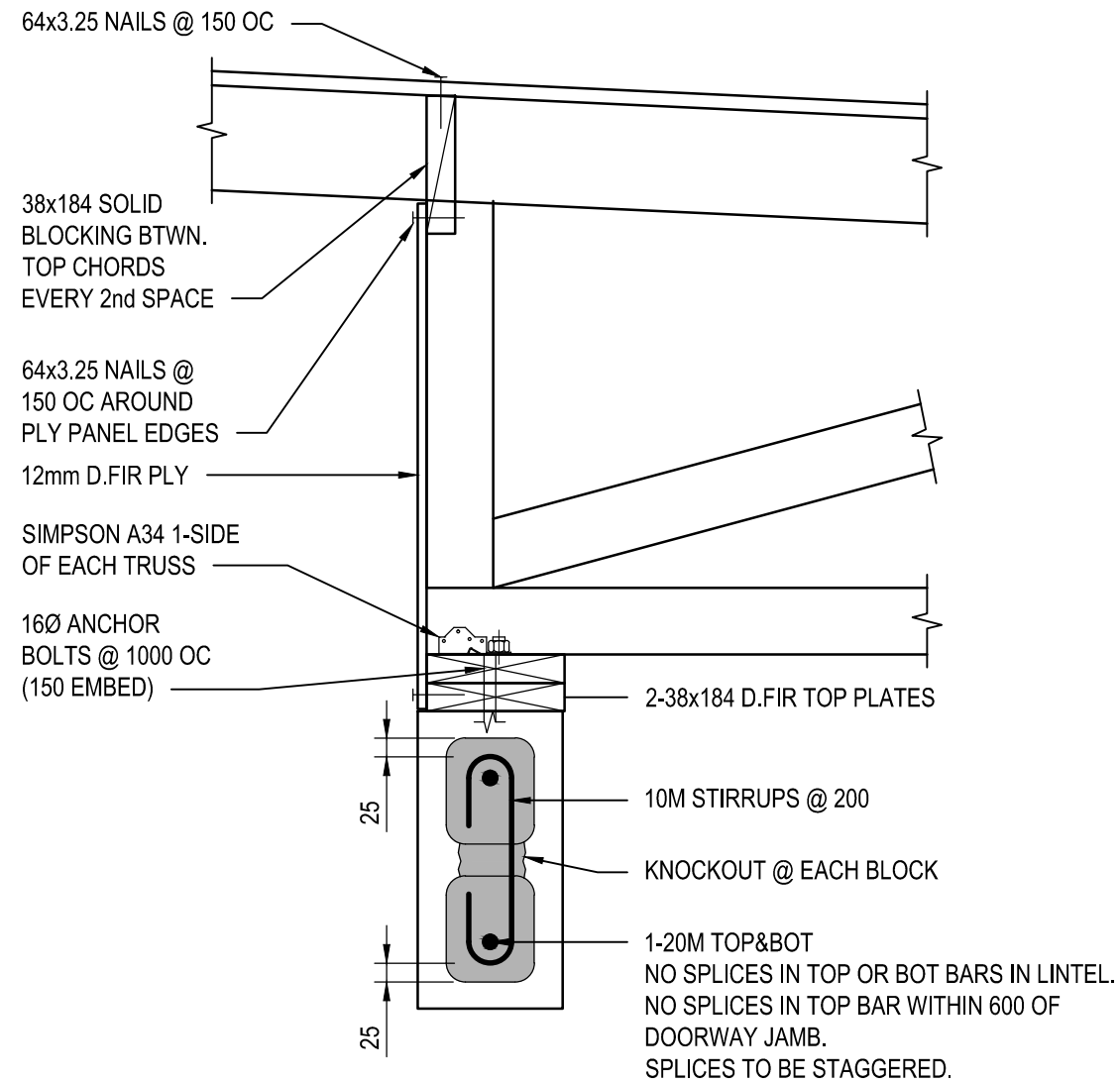
Drawing title/Titre du dessin
SECTIONS AND DETAILS

| | | |
|-----|-----------------------|------------|
| 1 | ISSUED FOR TENDER | 2015.12.15 |
| 0 | ISSUED FOR 90% REVIEW | 2015.10.27 |
| Rev | Description | |

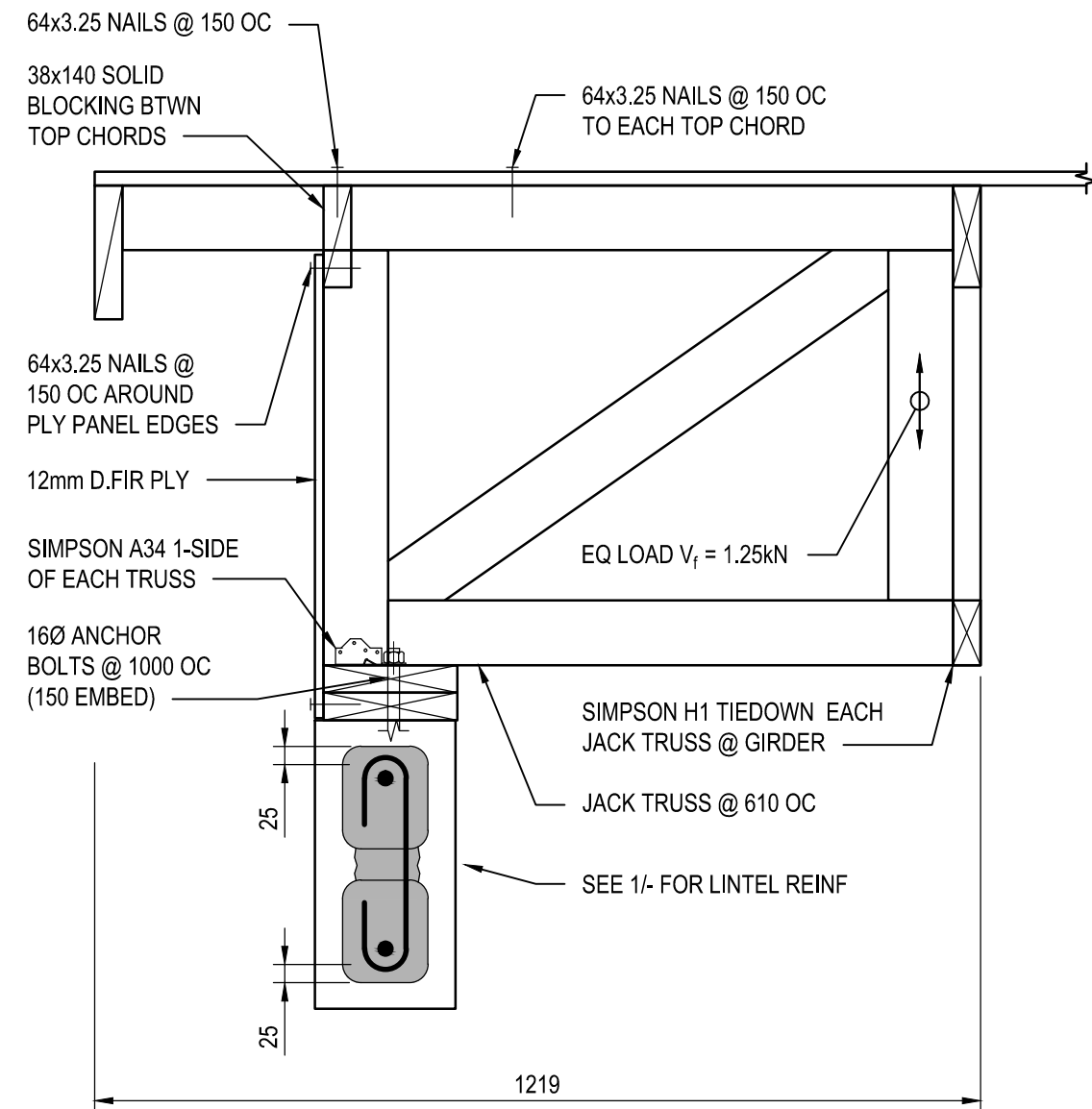
Approved by/Approve par
--
Designed by/Concept par
JWG
Drawn by/Dessine par
GM

PWGSC Project Manager/Administrateur de Projets TPSGC
PWGSC, Architectural and Engineering Resources Manager/Ressources Architectural et de Directeur d'Ingénierie, TPSGC
Date/Date
2015/10/15

Project No./No. du projet
131-19104-13
Sheet/Feuille
S2.2
5 OF 6
Revision/Revision
1



1 DOOR HEADER AT FULL TRUSS
S1.1 1:10



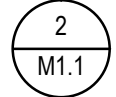
2 DOOR HEADER AT JACK TRUSS
S1.1 1:10

DO NOT SCALE DRAWINGS

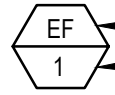
| | | | | | | | |
|--|---|--|--|---------------------------------------|--|--|--|
| Client/client Fisheries and Oceans Canada Peches et Oceans Canada | Project title/Titre du projet QUALICUM BAY, BC RIVER RD & HORNE LAKE RD STORAGE BUILDING REPLACEMENT | SUITE 400-401 GARBALLY ROAD VICTORIA (BRITISH COLUMBIA) CANADA V8T 5M3 TEL.: 250-384-5510 FAX: 250-386-2844 WWW.WSPGROUP.COM | Drawing title/Titre du dessin SECTIONS AND DETAILS | | Approved by/Approve par -- | PWGSC Project Manager/Administrateur de Projets TPSGC -- | Project No./No. du projet 131-19104-13 |
| | | | 1 ISSUED FOR TENDER 2015.12.15 | 0 ISSUED FOR 90% REVIEW 2015.10.27 | Designed by/Concept par JWJG | PWGSC, Architectural and Engineering Resources Manager/ Ressources Architectural et de Directeur d'Ingénierie, TPSGC -- | Sheet/Feuille S2.3 |
| Rev Description | | | | | Drawn by/Dessine par GM | Date/Date 2015/10/15 | 6 OF 6 |

| MECHANICAL DRAWING LIST | | |
|-------------------------|------------------------|--------|
| DRAWING NO. | DRAWING NAME | SCALE |
| M0.1 | LEGENDS & DRAWING LIST | N/A |
| M1.1 | PLUMBING | 1:100 |
| M2.1 | HVAC | 1:100 |
| M2.2 | DETAILS | N.T.S. |
| M3.1 | ELEVATION & SECTIONS | 1:50 |

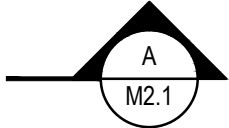
LEGEND




REFERENCE CALLOUT




EQUIPMENT TAG
TYPE OF EQUIPMENT
EQUIPMENT NUMBER




SECTION CALLOUT




BB BASEBOARD HEATER



PERIMETER DRAIN





ST STORM DRAIN



SAN SANITARY DRAIN

ABBREVIATIONS

| | |
|---|----------------------|
| CO | CLEANOUT |
| COTG | CLEANOUT TO GRADE |
| DSS | DOWNSPOUT SHOE |
| EF | EXHAUST FAN |
| FD | FLOOR DRAIN |
| FFL | FINISHED FLOOR LEVEL |
| PD | PERIMETER DRAIN |
| SAN | SANITARY |
|  | THERMOSTAT |
| UH | UNIT HEATER |
|  | SWITCH |

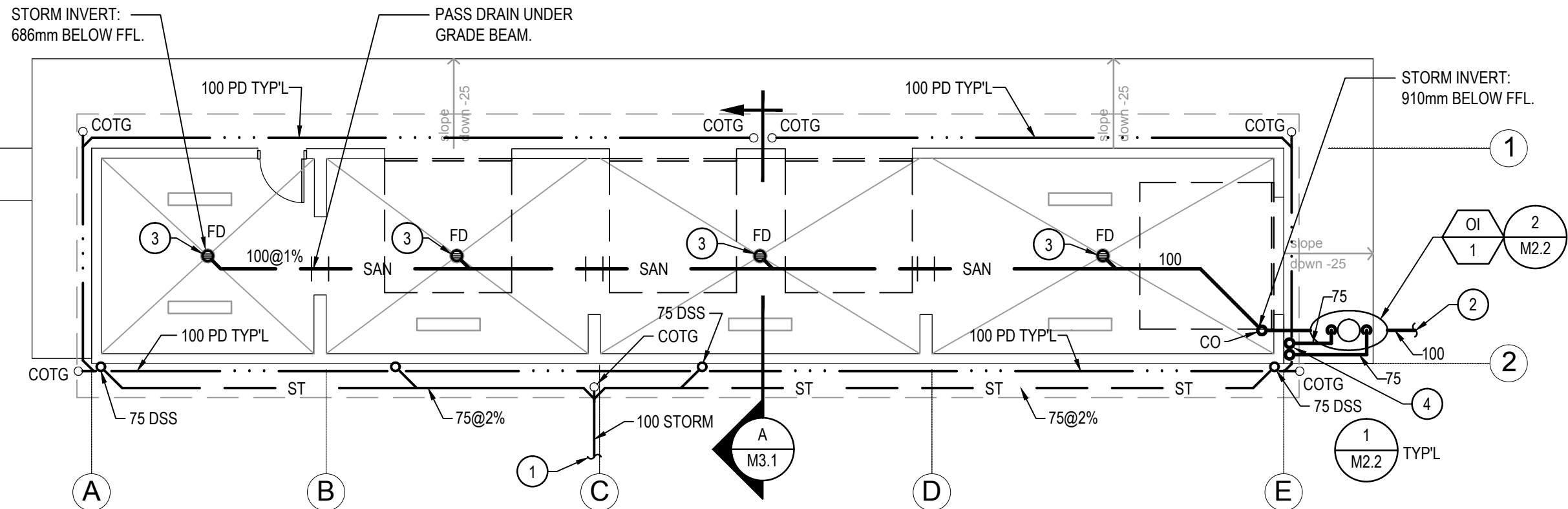
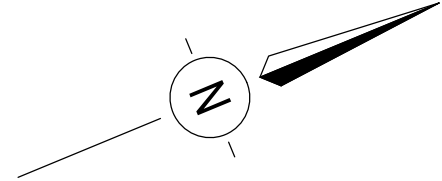
DO NOT SCALE DRAWINGS

| | | | | | | | | |
|--|--|---|---|--|--|-------------------------------|---|--|
| Client/client  Fisheries and Oceans Canada Peches et Oceans Canada | Project title/Titre du projet QUALICUM BAY, BC RIVER RD & HORNE LAKE RD STORAGE BUILDING REPLACEMENT |  <small>SUITE 400-401 GARBALLY ROAD VICTORIA (BRITISH COLUMBIA) CANADA V8T 5M3 TEL.: 250-384-5510 FAX: 250-386-2844 WWW.WSPGROUP.COM</small> | Drawing title/Titre du dessin LEGEND & DRAWING LIST | | | | Approved by/Approve par MMD PWGSC Project Manager/Administrateur de Projets TPSGC -- | Project No./No. du projet 131-19106-02 |
| | | | 2 TENDER DEC 15/2015 1 90% REVIEW OCT 28/2015 Rev Description | Designed by/Concept par MMD PWGSC, Architectural and Engineering Resources Manager/ Ressources Architectural et de Directeur d'ingénierie, TPSGC -- | Sheet/Feuille M0.1 1 OF 5 | Revision/Revision 0 | | |

existing pond 1

existing pond 2

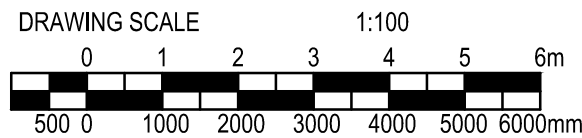
existing pond 3



A FLOOR PLAN
M1.1 SCALE: 1:100

DRAWING NOTES:

- ① DISCHARGE 100 STORM TO SLOPE AT RIVER'S EDGE. PROVIDE STABLE SLOPE GRADING TO PREVENT EROSION BY CONTRACTOR. CONTRACTOR TO CONSULT DEPARTMENTAL REPRESENTATIVE PRIOR TO INSTALLATION..
- ② PROVIDE FOR CONNECTION 1m BEYOND INTERCEPTOR FOR CONNECTION BY OTHERS.
- ③ PROVIDE 300Ø AREA DRAIN WITH EPOXY COATED CAST IRON DRAIN, 25mm THICK EPOXY COATED DUCTILE IRON TRACTOR GRATE, ANCHOR FLANGE, SEDIMENT BUCKET WEEPHOLES, ADJUSTABLE TOP, AND NO HUB OUTLET.
- ④ TERMINATE 75mm VENT PIPES ABOVE GRADE LEVEL. THE FIRST PIPE A MINIMUM OF 2000mm ABOVE GRADE AND THE OTHER 300mm MIN. ABOVE THE FIRST.



DO NOT SCALE DRAWINGS

| | | | | | | | | | |
|---|--|--|-------------------------------|-------------|--|---|---------------------------|---------------|-------------------|
| Client/client Fisheries and Oceans Canada Peches et Oceans Canada | Project title/Titre du projet QUALICUM BAY, BC RIVER RD & HORNE LAKE RD STORAGE BUILDING REPLACEMENT | SUITE 400-401 GARBALLY ROAD VICTORIA (BRITISH COLUMBIA) CANADA V8T 5M3 TEL.: 250-384-5510 FAX: 250-386-2844 WWW.WSPGROUP.COM | Drawing title/Titre du dessin | | Approved by/Approve par | PWGSC Project Manager/Administrateur | Project No./No. du projet | Sheet/Feuille | Revision/Revision |
| | | | PLUMBING | | MMD DEC 15/2015 | PWGSC -- | | | |
| | | | Rev | Description | 2 TENDER DEC 15/2015 1 90% REVIEW OCT 28/2015 | PWGSC, Architectural and Engineering Resources Manager/ Ressources Architectural et de Directeur d'ingénierie, TPSGC -- | M1.1 2 OF 5 | 0 | |
| | | | | | Drawn by/Dessine par DMM | Date/Date 2015/10/15 | | | |

UNIT HEATER SCHEDULE

| TAG | TYPE | AIR FLOW l/s / cfm | ELECTRICAL DATA | FAN MOTOR DATA | ELECT DATA | | MANUF. MODEL NO. | NOTES |
|------|----------|-----------------------|-----------------------|-------------------|------------|-------|---------------------|-------|
| | | | | | VOLTS | PHASE | | |
| UH-1 | VERTICAL | 755 / 1600 | 1/208/5 kW 24 AMPS | 1/100 | 208 | 1 | QMARK MUH05-81 | 1, 2, |
| UH-2 | VERTICAL | 755 / 1600 | 1/208/5 kW 24 AMPS | 1/100 | 208 | 1 | QMARK MUH05-81 | 1, 2, |

NOTE:

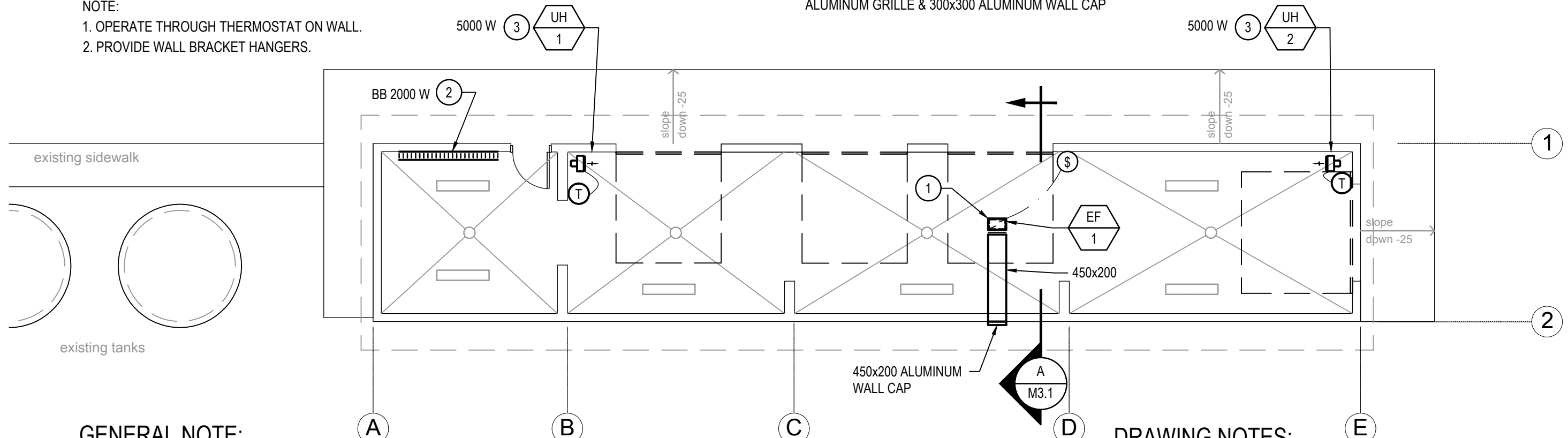
1. OPERATE THROUGH THERMOSTAT ON WALL.
2. PROVIDE WALL BRACKET HANGERS.

FAN SCHEDULE

| TAG | SERVICE | AIR FLOW l/s / cfm | STATIC PRESSURE Pa / in | SONES | RPM | MOTOR HP | ELECT DATA | | NOTES |
|------|-----------------------------|-----------------------|-------------------------------|-------|------|-------------|------------|-------|-------|
| | | | | | | | VOLTS | PHASE | |
| EF-1 | STORAGE BUILDING EXHAUST | 185 / 397 | 60 / 0.25 | 7.4 | 1300 | 1/25 | 120 | 1 | 1,2 |

NOTE:

1. GREENHECK MODEL SQ-90-G OR APPROVED ALTERNATE.
2. BOTTOM INTAKE SIDE DISCHARGE CONFIGURATION C/W INTEGRAL BACKDRAFT DAMPER, ALUMINUM GRILLE & 300x300 ALUMINUM WALL CAP



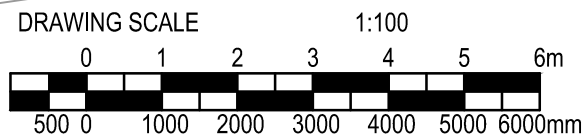
GENERAL NOTE:

1. CONTRACTOR TO ALLOW FOR THE INSTALLATION OF TWELVE (12) ELECTRICAL OUTLETS THROUGHOUT THE BUILDING AS DIRECTED BY THE DEPARTMENTAL REPRESENTATIVE.

DRAWING NOTES:

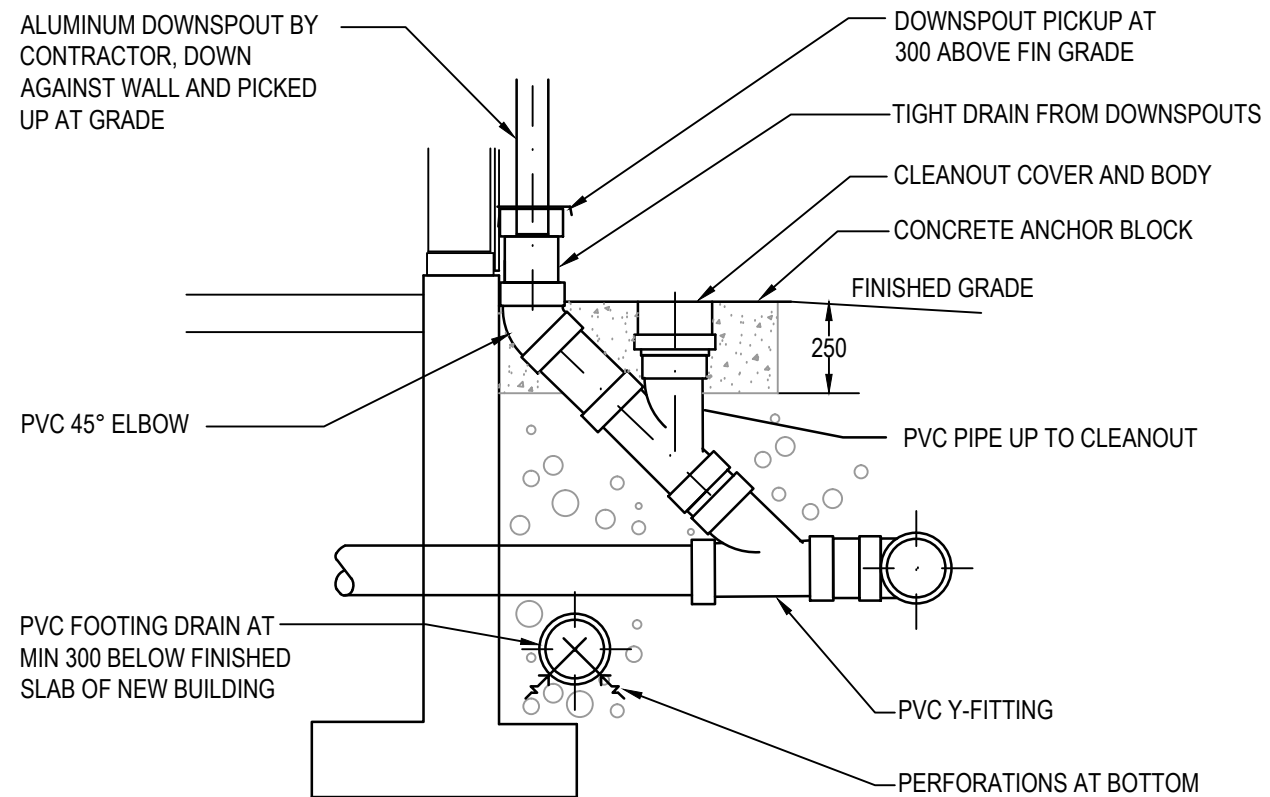
1. INLINE EXHAUST FAN BOTTOM INTAKE SIDE DISCHARGE UNIT. CONTROL THROUGH MANUAL ON/OFF SWITCH ON WALL.
2. ELECTRIC BASEBOARD HEATER WITH INTEGRAL THERMOSTAT. INSTALL MIN 100mm ABOVE FFL. QMARK MODEL QMKC-2508W, 1PH, 208V, 2000W, 9.6 AMPS OR APPROVED ALTERNATE.
3. VERTICAL WALL MOUNTED ELECTRIC UNIT HEATER. MOUNT MIN. 2438mm ABOVE FFL.

FLOOR PLAN
M2.1 SCALE: 1:100

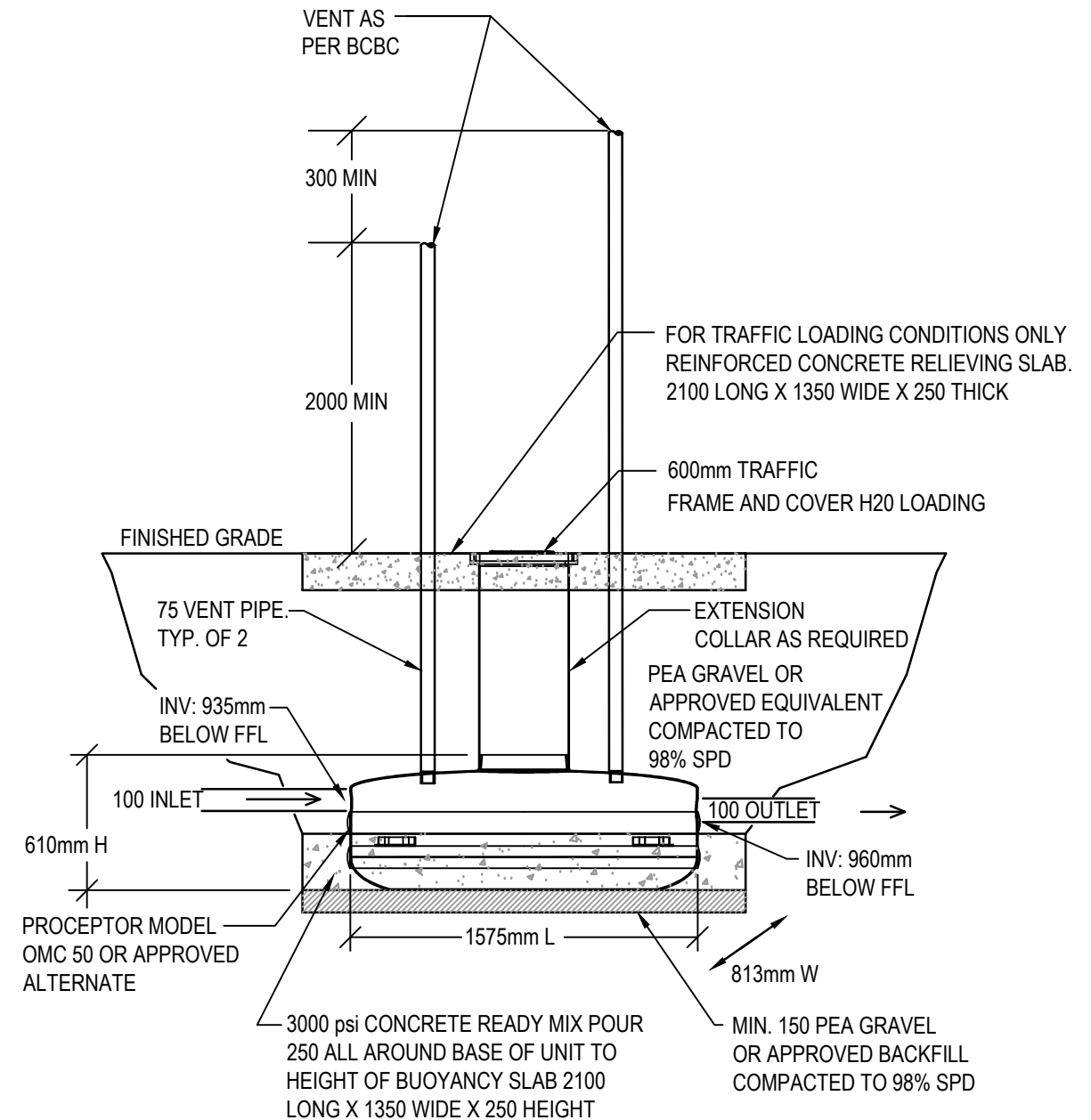


DO NOT SCALE DRAWINGS

| | | | | | | |
|---|---|--|--|---|--|---|
| Client/client Fisheries and Oceans Canada Peches et Oceans Canada | Project title/Titre du projet QUALICUM BAY, BC RIVER RD & HORNE LAKE RD STORAGE BUILDING REPLACEMENT | SUITE 400-401 GARBALLY ROAD VICTORIA (BRITISH COLUMBIA) CANADA V8T 5M3 TEL.: 250-384-5510 FAX: 250-386-2844 WWW.WSPGROUP.COM | Drawing title/Titre du dessin HVAC | Approved by/Approve par MMD DEC 15/2015 | PWGSC Project Manager/Administrateur de Projets TPSGC -- | Project No./No. du projet 131-19106-02 |
| | | | | Designed by/Concept par MMD OCT 28/2015 | | |
| | | | | Drawn by/Dessine par DMM | Date/Date 2015/10/15 | |



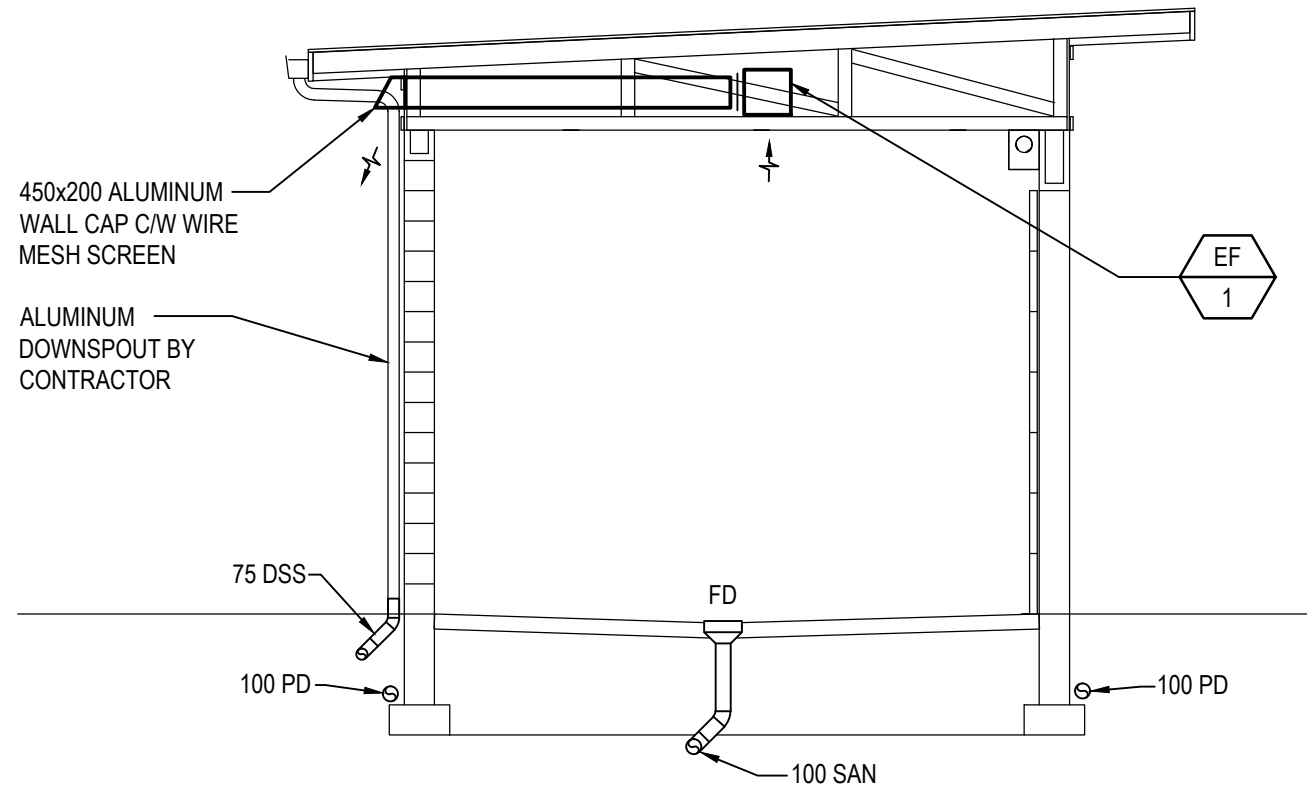
1 FOOTING DRAIN, DOWNSPOUT AND CLEAN OUT
M2.2 SCALE: NTS



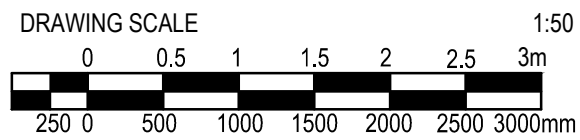
2 OIL INTERCEPTOR DETAIL
M2.2 SCALE: NTS

DO NOT SCALE DRAWINGS

| | | | | | | |
|---|---|--|---|-----------------------------|---|---|
| Client/client Fisheries and Oceans Canada Peches et Oceans Canada | Project title/Titre du projet QUALICUM BAY, BC RIVER RD & HORNE LAKE RD STORAGE BUILDING REPLACEMENT | SUITE 400-401 GARBALLY ROAD VICTORIA (BRITISH COLUMBIA) CANADA V8T 5M3 TEL.: 250-384-5510 FAX: 250-386-2844 WWW.WSPGROUP.COM | Drawing title/Titre du dessin DETAILS | 2 TENDER DEC 15/2015 | Approved by/Approve par MMD PWGSC Project Manager/Administrateur de Projets TPSGC | Project No./No. du projet 131-19106-02 |
| | | | | 1 90% REVIEW OCT 28/2015 | Designed by/Concept par MMD PWGSC, Architectural and Engineering Resources Manager/ Ressources Architectural et de Directeur d'ingénierie, TPSGC | Sheet/Feuille M2.2 4 OF 5 |
| | | | | Rev Description | Drawn by/Dessine par DMM | Date/Date 2015/10/15 |



A
SECTION
M3.1
SCALE: 1:50



DO NOT SCALE DRAWINGS

| | | | | | | | |
|---|--|---|---|-----------------------------|-----------------------------|---|---|
| Client/client Fisheries and Oceans Canada Peches et Oceans Canada | Project title/Titre du projet QUALICUM BAY, BC RIVER RD & HORNE LAKE RD STORAGE BUILDING REPLACEMENT | <small>SUITE 400-401 GARBALLY ROAD VICTORIA (BRITISH COLUMBIA) CANADA V8T 5M3 TEL.: 250-384-5510 FAX: 250-386-2844 WWW.WSPGROUP.COM</small> | Drawing title/Titre du dessin ELEVATIONS & SECTIONS | | | Approved by/Approve par MMD PWGSC Project Manager/Administrateur de Projets TPSGC | Project No./No. du projet 131-19106-02 |
| | | | | 2 TENDER DEC 15/2015 | 1 90% REVIEW OCT 28/2015 | Designed by/Concept par MMD PWGSC, Architectural and Engineering Resources Manager/ Ressources Architectural et de Directeur d'ingénierie, TPSGC | Sheet/Feuille M3.1 5 OF 5 |
| | | | | Drawn by/Dessine par DMM | Date/Date 2015/10/15 | | |