



**parcscanada.gc.ca parcscanada.gc.ca**

**PROJECT BRIEF AND REQUEST FOR PROPOSAL  
(Construction Contract)**

**Tree removal  
Major Upgrade of Highway 132  
Forillon National Park – Phase III**

**Tender No. 2015-28**

**Date: January 2015**

**Gaspé Management Unit / Unité de gestion de la Gaspésie  
Parks Canada Agency**



**Parcs  
Canada** **Parks  
Canada**

**Canada**

***Table of Contents***

1. BACKGROUND .....	1
2. DEFINITIONS .....	1
<b>3. CONSTRUCTION BY OTHER CONTRACTORS OR WORKERS .....</b>	<b>1</b>
4. DESCRIPTION OF WORK .....	1
5. SPECIAL MITIGATION MEASURES .....	2
6. ENVIRONMENTAL EMERGENCIES .....	3
<b>7. TRAFFIC MANAGEMENT AND SIGNS .....</b>	<b>3</b>
<b>8. PROTECTION OF INFRASTRUCTURE AND PROPERTY .....</b>	<b>4</b>
<b>9. EXISTING UTILITIES .....</b>	<b>4</b>
<b>10. OCCUPATIONAL HEALTH AND SAFETY .....</b>	<b>4</b>
11. USE OF SITES BY THE CONTRACTOR .....	5
12. WORK COMPLETION TIMELINE .....	6
13. LAWS AND REGULATIONS, PERMITS, DIRECTIVES .....	6



## **1. BACKGROUND**

The Parks Canada Agency (PCA) Gaspé Management Unit wants tree removal work carried out as part of the major upgrade of Highway 132. The work involves felling trees on the new right-of-way of Highway 132 in the Cap-des-Rosiers sector, between the La Chute parking lot and the Northern Sector Road, and between Highway 132 and the boundary of Forillon National Park, near Cap-des-Rosiers. Approximately 14.75 hectares are to be cleared. This estimate includes the right-of-way for a new electricity line and two parking lots shown on the appended plans. The tree removal areas and their dimensions have been marked on the plans by the firm Stantec, which are appended to this document.

## **2. DEFINITIONS**

- .1 “Departmental Representative” means the Forillon National Park (PCA) project manager, or his/her authorized representative.
- .2 “Contractor” means the person or company chosen to accomplish the entirety of the work described in this document, in accordance with the standards, estimates and drawings provided for the purpose.

## **3. CONSTRUCTION BY OTHER CONTRACTORS OR WORKERS**

- .1 The Contractor must take into account that the construction work for Phase II of the Highway 132 upgrade is in the process of being carried out by Eurovia Québec Construction Inc. (Eurovia). The site is currently closed and has been vacated for the winter. It extends approximately 2 km, from the Northern Sector Road to Highway 132. The roadway infrastructure, earthworks and surfacing of this new road have been completed. The new bridge, however, has not been completed and is not usable. This road is not open to traffic. For this sector, included in Sections ITD4 and ITD5, the tree removal work will have to be done last.
- .2 PCA reserves the right to assign, in the vicinity of the worksite or even within the tree removal corridor, other contractors or workers, with or without machinery and materials, for example crawler drill operators or surveyors.

## **4. DESCRIPTION OF WORK**

- .1 Identify the tree removal areas and stake out the worksites in accordance with the plans provided by Stantec (7 plans, 158150010-300-ITD-ITD 1-01 to 158150010-300-IT-D-ITD7-01). Files, in dwg format, will be provided to the company that is awarded the contract.
- .2 Over the entire tree removal area, fell the timber to ground or nearly ground level, including standing trees, scrub, bushes, roots, seedlings as well as partially buried logs, and remove the resulting material as well as all debris on the ground. If weather conditions do not permit razing to ground level, the cuts can be no more than 30 cm above ground.



- .3 This work can be done by a tracked multipurpose feller, a tracked feller-buncher, or by manual felling (chain saws).
- .4 Wood of commercial value felled within the corridor is the property of the Contractor, who can sell it.
- .5 The work includes no grubbing (stump grinding or root removal).
- .6 Trees must be felled so as to fall into the tree removal area.
- .7 Tree removal must start in the zones marked on the plans ITD6 and ITD3, in the sequence shown, as a priority in the order shown here. For felling zones included in Sections ITD4 and ITD5, tree removal work will have to be done last.
- .8 Timber skidding must use a tracked vehicle or a vehicle with large flotation tires.
- .9 All tree removal debris must be removed from the park.
- .10 To dispose of tree removal waste, the Contractor may use shredders, provided that:
  - dimensions of fragments (wood chips) are no larger than 100 mm;
  - fragments are spread evenly over the ground to a depth not more than 100 mm covering the natural terrain;
  - no debris litters public or private roads or paths.
- .11 The Contractor must take into account that there are watercourses (streams) in the tree removal area and that it must at no time allow its machinery to wade any watercourse. Temporary bridges will have to be built for the machinery to cross such watercourses. Machinery must never travel within 5 m of a watercourse.
- .12 At the end of every day, the Contractor must clean all its worksites. Once the work is completed, remove from the site all unneeded materials and equipment, including all waste and tools.

## **5. SPECIAL MITIGATION MEASURES**

- .1 Various measures to mitigate the foreseeable impact of the tree removal must be considered over the entire tree removal area.
- .2 The tree removal restriction period is May 15 to April 15.
- .3 The boundaries of the tree removal areas must be identified clearly. Adequate signage must be installed, and maintained in good condition.
- .4 The Contractor must fell trees in such a way as to not damage the forest edge and must prevent trees from falling outside the forest boundary or into a watercourse. As necessary, the Contractor must clean the watercourse and remove any debris from its felling operations outside of the shoreline strip.
- .5 Tree removal work must under no circumstances change the characteristics of the natural drainage basin.



- .6 There are watercourses (streams) in the tree removal area, and riverbeds must at no time be waded by machinery. Temporary bridges will have to be built for the machinery to cross such watercourses.
- .7 Machinery must never travel within 5 m of a watercourse.
- .8 To limit erosion and deterioration of plant cover, a single access track shall be used to reach tree removal areas near erosion-sensitive environments such as banks and steep ground.
- .9 Land clearing should be avoided as much as possible near banks.
- .10 There must be no burning of ligneous debris.
- .11 Trees outside these boundaries must not be damaged. All precautions must be taken to ensure this.
- .12 Felling must not damage trees that have to be preserved, and must as much as possible avoid trees falling outside the boundaries of the tree removal zone (felling must be directional).
- .13 Equipment must be inspected daily and maintained in proper working order so as to detect any leaks and maximize their performance.
- .14 No waste shall be left at the site.
- .15 Oil and fuel must not be handled within 15 m of a watercourse.

## **6. ENVIRONMENTAL EMERGENCIES**

- .1 The Contractor must have in its possession, close to the machinery and equipment being used, spill kits appropriate for the equipment being used to recover any accidental spillage, and be able to handle it.
- .2 All staff working near the site must receive instruction on how to use the equipment in the spill kits.
- .3 All possibility of contamination of wetlands must be eliminated.
- .4 An emergency measures plan, approved by the PCA authorities, must be put in place.
- .5 Should a spill occur, the Contractor must notify the Departmental Representative and proceed to confine, clean, decontaminate and dispose of the spill in accordance with standards and regulations.
- .6 The Contractor is responsible for forest fire prevention. It must strictly observe the instructions, laws and regulations issued by the competent authorities.

## **7. TRAFFIC MANAGEMENT AND SIGNS**

- .1 The Contractor must take all necessary measures to ensure that vehicle, pedestrian and other traffic on all public and private roads and tracks is not unduly impeded, disrupted or made hazardous by tree removal operations, materials or equipment.



- .2 Should, for any valid reason, the Contractor have to disrupt road traffic during and/or after the required work, it must first obtain authorization from the Departmental Representative as well as supply and install all appropriate traffic diversion signs. The Contractor must at all times comply with the road traffic signal standards prescribed by the Quebec Department of Transport (see the standard signs in Schedule A).
- .3 Observe and apply the construction safety measures required by the Department of Transport (Roadworks – Quebec Road Safety Code Volume V – Roadsigns / *Ouvrages routiers - Tome V – Signalisation routière*).
- .4 Should the Contractor fail to install and maintain adequate signalling as required by the documents described above, the Owner may close the site at any time. Costs incurred shall be borne by the Contractor.
- .5 The Departmental Representative may order the Contractor to do anything and perform any work that PCA considers reasonable and necessary to ensure that these measures are complied with or to remedy any failure to comply. The Contractor must comply with any such order.

## **8. PROTECTION OF INFRASTRUCTURE AND PROPERTY**

- .1 The Contractor must protect park infrastructure and property.
- .2 The Contractor must take all precautions to not damage, alter or modify park infrastructure. It is responsible for repairing any damage caused by its negligence.
- .3 The Contractor must help any person authorized by PCA to inspect its work and site.
- .4 The Departmental Representative may order the Contractor to take any measures and perform any work that the PCA considers reasonable and necessary to ensure compliance with paragraphs 1, 2 or 3, or to rectify a breach of those provisions. The Contractor must comply with any such order.

## **9. EXISTING UTILITIES**

- .1 Before starting work, identify the extent and location of buried utilities in the work zone and notify the Departmental Representative.
- .2 Protect and maintain in service any active utilities channels.

## **10. OCCUPATIONAL HEALTH AND SAFETY**

- .1 PCA regards federal legislation governing occupational health and safety as imposing on it certain responsibilities as workplace proprietor and strives to exercise all reasonable diligence in the management of workers' health and safety. To be able to assume these responsibilities, PCA implements a safety policy for all contractors carrying out work at its sites, to ensure that they assume their proper roles and responsibilities under Part II of the Canada Labour Code and the Canada Occupational Health and Safety Regulations.



- .2 The Contractor must comply with all federal and provincial/territorial legislation, as well as with PCA policies and procedures applicable to occupational health and safety.
- .3 The Contractor must ensure that its employees know and understand all emergency procedures in force at the worksite.
- .4 The Contractor must manage its activities in such a way that the health and safety of the public and of the personnel at the site, as well as protection of the environment, always take precedence when considering costs and timelines.
- .5 The Contractor must eliminate the source of hazards to the health, safety and physical integrity of workers and of all other persons within site boundaries. It must adopt, apply and supervise all the precautionary measures of its health and safety program relating to the execution of the work.
- .6 The Contractor must design and maintain the site in a way that protects workers against occupational hazards and ensures the site is safe.
- .7 The Contractor must ensure that the site is identified and marked out, and that a safety perimeter is established and respected. Access must be restricted at all times by an effective method provided by the Contractor.
- .8 The Contractor and its employees must comply with all safety measures relating to felling, hauling, lopping and shredding, particularly the wearing of safety equipment, devices and personal protective clothing.
- .9 The Contractor must eliminate at source all hazards to the health, safety and physical integrity of workers and all other persons within site boundaries.
- .10 Smoking is prohibited in forests at all times.
- .11 All work is subject to directives and inspections by the Park Conservation Service and/or the Quebec forest protection service, SOPFEU.
- .12 The Contractor must complete and sign the form "Attestation et preuve de conformité aux exigences en matière de santé et sécurité au travail (SST) / Certificate and Proof of Compliance with Health and Safety Requirements" before starting work.

## **11. USE OF SITES BY THE CONTRACTOR**

- .1 Worksites will be available from 6:00 a.m. to 6:00 p.m. Mondays to Fridays and from 8:00 a.m. to 4:30 pm. Saturdays and Sundays.
- .2 The Contractor must remain within the sectors specified by the Departmental Representative for the execution of work and for storage. Contractor's personnel must not enter or cross, for any reason whatsoever, any other parts or sectors of the park. Contractor's personnel may access the sites only via the designated access points.
- .3 For access, storage and loading purposes, the Contractor may use the Northern Sector Road and Boulevard Des-Rosiers. The Contractor is responsible for clearing its roads of snow.



- .4 Storage of petroleum products must be approved by the Departmental Representative.
- .5 The Contractor must move any stored materials or equipment that interferes with PCA operations or the operations of other contractors and workers referred to in the Section "Construction by Other Contractors or Workers".
- .6 The Contractor must not unduly accumulate materials or equipment in a way that obstructs the sites.
- .7 The Contractor is responsible for supplying and installing adequate signage and signalling at the various tree removal areas along the road.
- .8 During the work period, the Northern Sector of the park will be closed, but the Contractor must take into account that the sector and adjoining sites may remain accessible to visitors.

## **12. WORK COMPLETION TIMELINE**

- .1 Work may start once the contract is awarded.
- .2 The work completion duration is set at six (6) weeks, including site preparation time, and the work must be completed by no later than March 25, 2016.

## **13. LAWS AND REGULATIONS, PERMITS, DIRECTIVES**

- .1 The Contractor must comply with all provincial, municipal and federal regulations, and all other laws and regulations that may apply to this work. It shall be liable for all breaches of the following laws and regulations, to which special attention must be paid:
  - The Canada National Parks Act;
  - The Canadian Environmental Protection Act.
- .2 The Contractor must obtain any permits essential for executing the work.
- .3 The Contractor shall assume (and bear the cost of) all obligations relating to safety measures required by the Quebec Act Respecting Occupational Health and Safety, as well as all costs arising from such obligations.



Project Brief and Request For Proposal

Tree removal for Highway 132 Phase III




## **Schedule A: MTQ Roadwork signs**



STANDARD

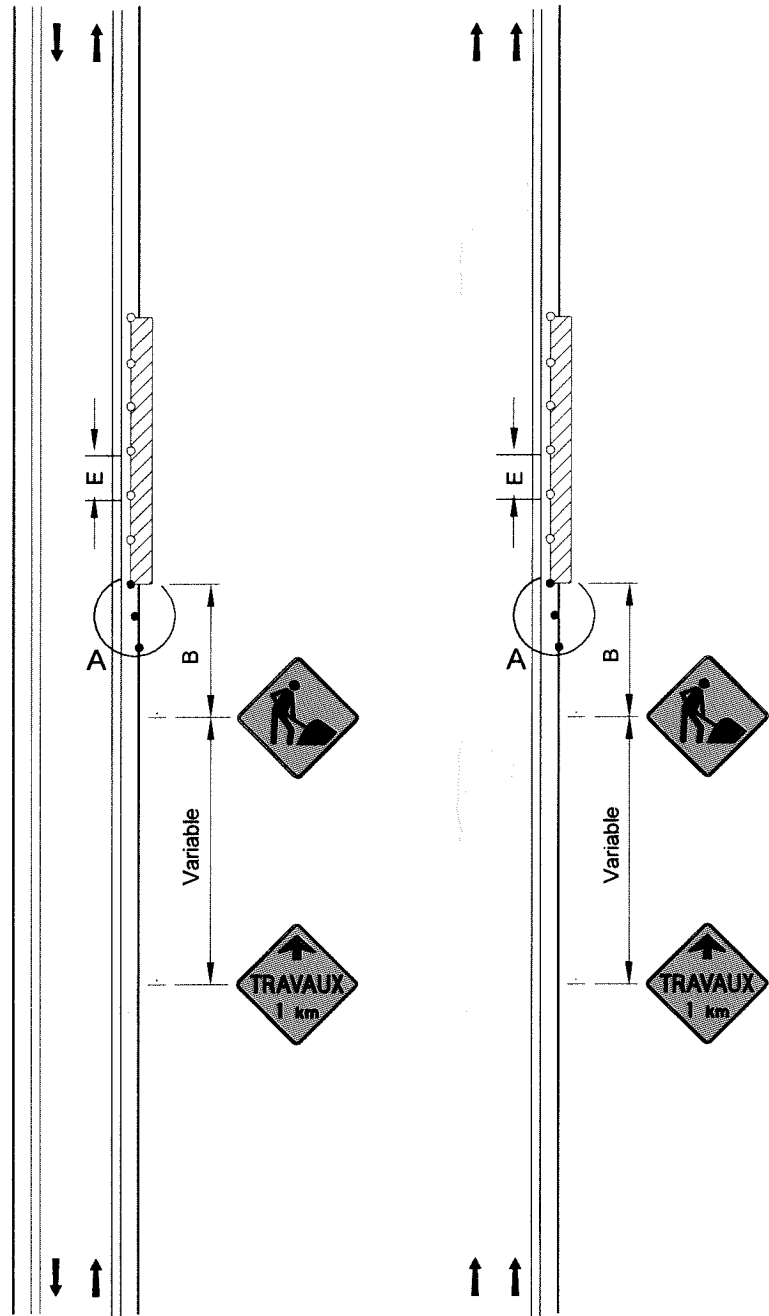
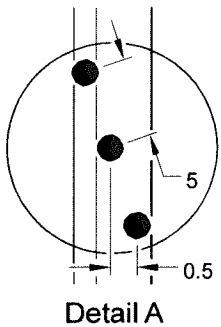
LONG-TERM ROADWORK SIGNS

SHOULDER OBSTRUCTION UP TO 1 m FROM TRAFFIC LANES

-  Work area
- Marker conforming to table 4.5-5 or direction arrow
- Marker conforming to table 4.5-5

V (km/h)	E (m)	B (m)
60 and under	10	50
70	10	75
80 and 90	15	100
100	20	125

V: Speed displayed on signs with white background P-70 for value "B". For value "E", "V" corresponds to the speed displayed by signs with orange background T-70.  
 E: Spacing of markers  
 B: Spacing of signs



Notes:


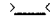
- the work area must be between 1 m and 3 m of the edge of the traffic lane;
- dimensions are in metres.

STANDARD SIGNS

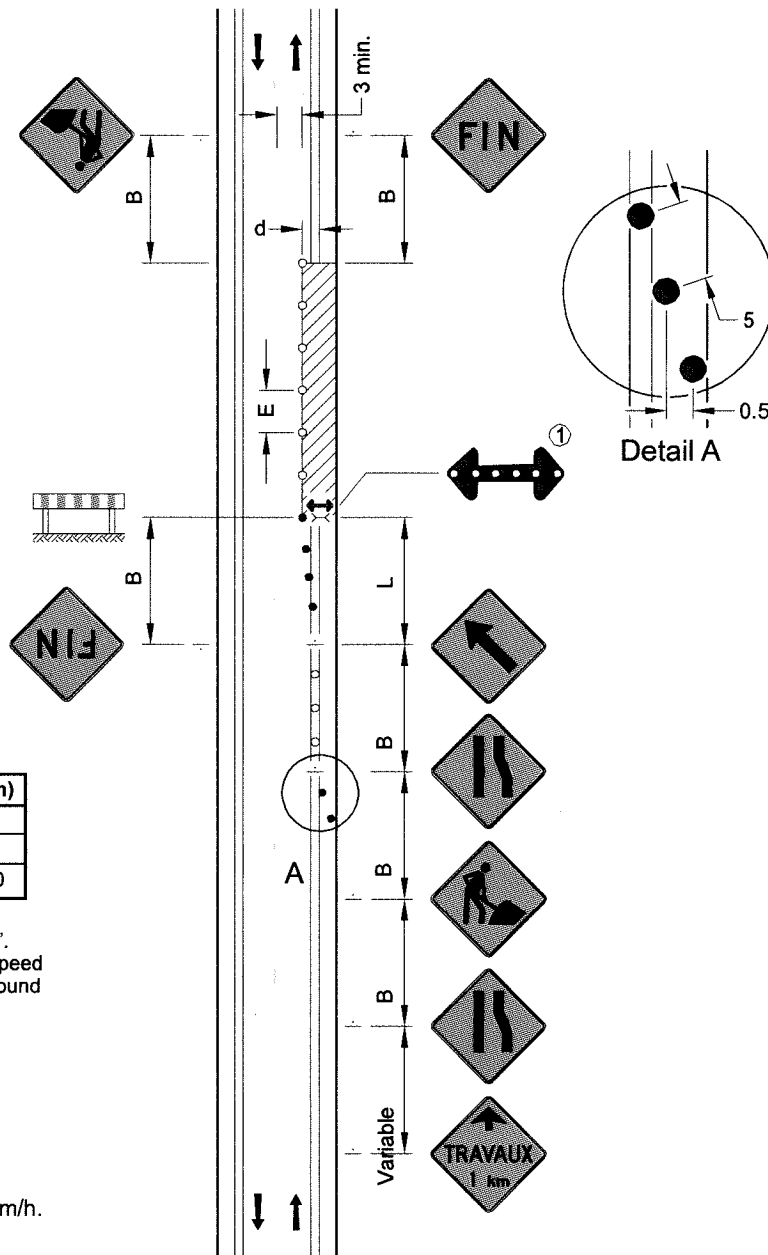
LONG-TERM ROADWORK  
SIGNS FOR TWO-WAY  
TRAFFIC

STANDARD

PARTIAL OBSTRUCTION OF RIGHT LANE  
CLEARANCE OF 3 m TO 1 m  
OUTSIDE THE TRAFFIC LANES

 Work area  
 Barrier  

- Marker conforming to table 4.5-5 or direction arrow
- Marker conforming to table 4.5-5



V (km/h)	L (m)	E (m)	B (m)
60 and under	10 d	10	50
70	20 d	10	75
80 and 90	30 d	15	100

V: Speed displayed on signs with white background P-70 for values "L" and "B". For value "E", "V" corresponds to the speed displayed by signs with orange background T-70.

- L: Length of taper
- E: Spacing of markers
- B: Spacing of signs
- d: Width of obstruction on one lane
- (lane ≤ 3,65 m)


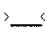
1 Required on roads where V ≥ 70 km/h.

- Notes:**
- markers delimiting a taper must be installed at 5 m intervals;
  - dimensions are in metres.

STANDARD

LONG-TERM ROADWORK SIGNS FOR TWO-WAY TRAFFIC

PARTIAL OBSTRUCTION OF RIGHT LANE ENCROACHING ON THE OPPOSITE LANE

 Work area  
 Barrier  
 • Marker conforming to table 4.5-5 or direction arrow  
 ○ Marker conforming to table 4.5-5

V (km/h)	L (m)	E (m)	B (m)
60 and under	10 d	10	50
70	20 d	10	75
80 and 90	30 d	15	100

V: Speed displayed on signs with white background P-70 for values "L" and "B". For value "E", "V" corresponds to the speed displayed by signs with orange background T-70

L: Length of taper

E: Spacing of markers

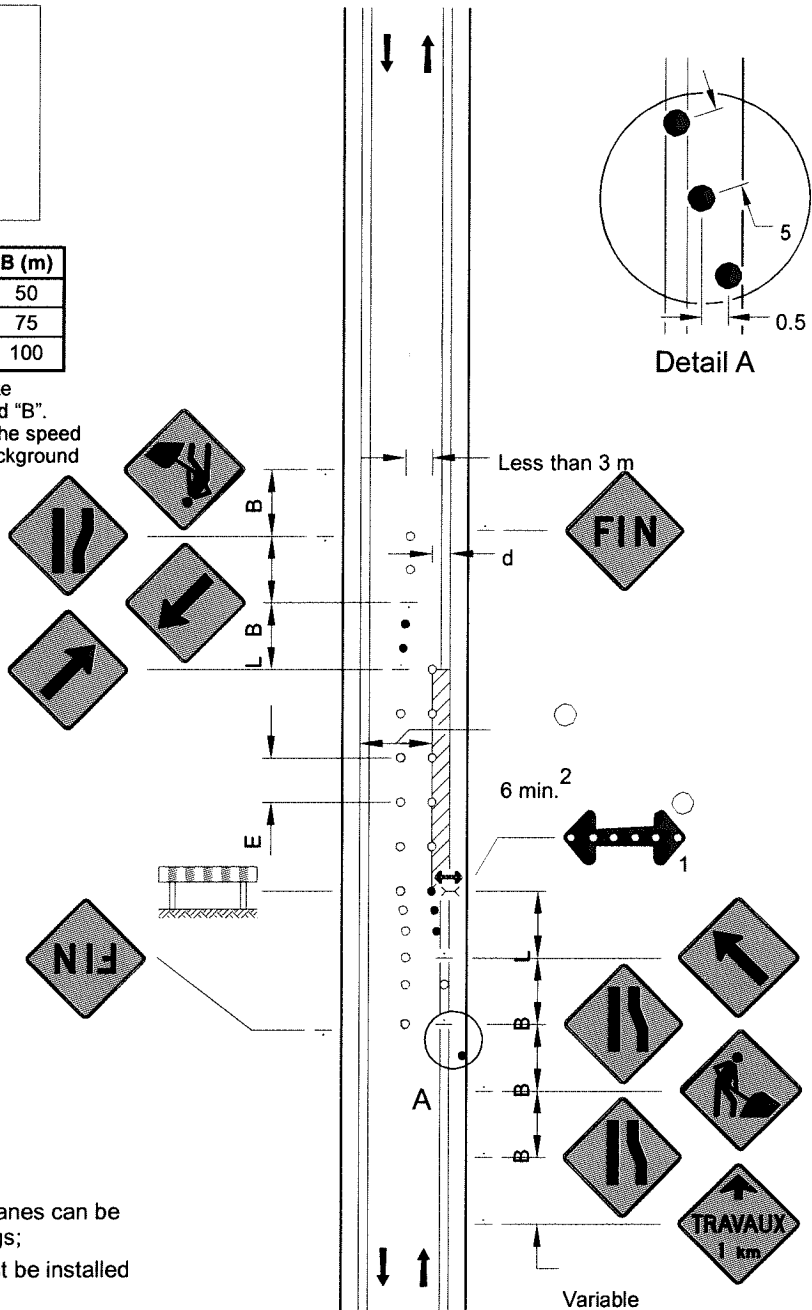
B: Spacing of signs

d: Width of obstruction on one lane (lane ≤ 3.65 m)

- 1 Required on roads where V ≥ 70 km/h.
- 2 When the shoulder is driveable, it can be included in the 6 m calculation.

Notes:

- markers separating opposing lanes can be replaced by temporary markings;
- markers delimiting a taper must be installed at 5 m intervals;
- dimensions are in metres.





Detail A

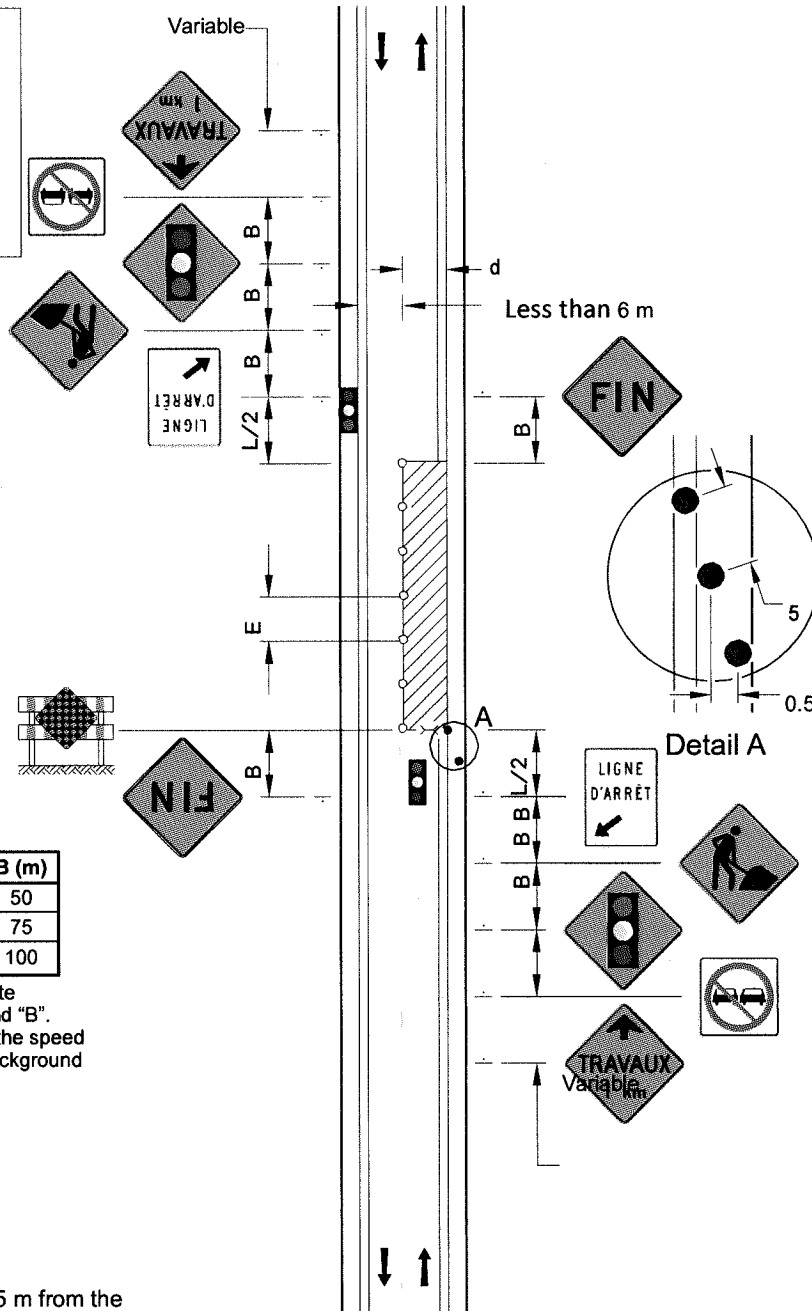
STANDARD SIGNS

LONG-TERM ROADWORK  
SIGNS FOR TWO-WAY  
TRAFFIC

STANDARD

ALTERNATION  
USING TRAFFIC LIGHTS

-  Work area
-  Barrier
- Marker conforming to table 4.5-5 or direction arrow
- Marker conforming to table 4.5-5



V (km/h)	L (m)	E (m)	B (m)
60 and under	10 d	10	50
70	20 d	10	75
80 and 90	30 d	15	100

V: Speed displayed on signs with white background P-70 for values "L" and "B".  
For value "E", "V" corresponds to the speed displayed by signs with orange background T-70

L: Length of taper

E: Spacing of markers

B: Spacing of signs

d: Width of obstruction on one lane  
(lane ≤ 3.65 m)

Notes:

- traffic lights must be installed 5 m from the "Stop line / Ligne d'arrêt" sign;
- dimensions are in metres.



STANDARD SIGNS

LONG-TERM ROADWORK  
SIGNS FOR TWO-WAY  
TRAFFIC

Volume  
V

Chapter  
4

Number  
TLD 005

Date  
Dec. 2012

STANDARD

ALTERNATION  
USING A SIGNALMAN

- Work area
- Barrier
- Marker conforming to table 4.5-5 or direction arrow
- Marker conforming to table 4.5-5

V (km/h)	L (m)	E (m)	B (m)
60 and under	10 d	10	50
70	20 d	10	75
80 and 90	30 d	15	100

V: Speed displayed on signs with white background P-70 for values "L" and "B". For value "E", "V" corresponds to the speed displayed by signs with orange background T-70.<sup>1</sup>

L: Length of taper

E: Spacing of markers

B: Spacing of signs

d: Width of obstruction on one lane (lane ≤ 3.65 m)

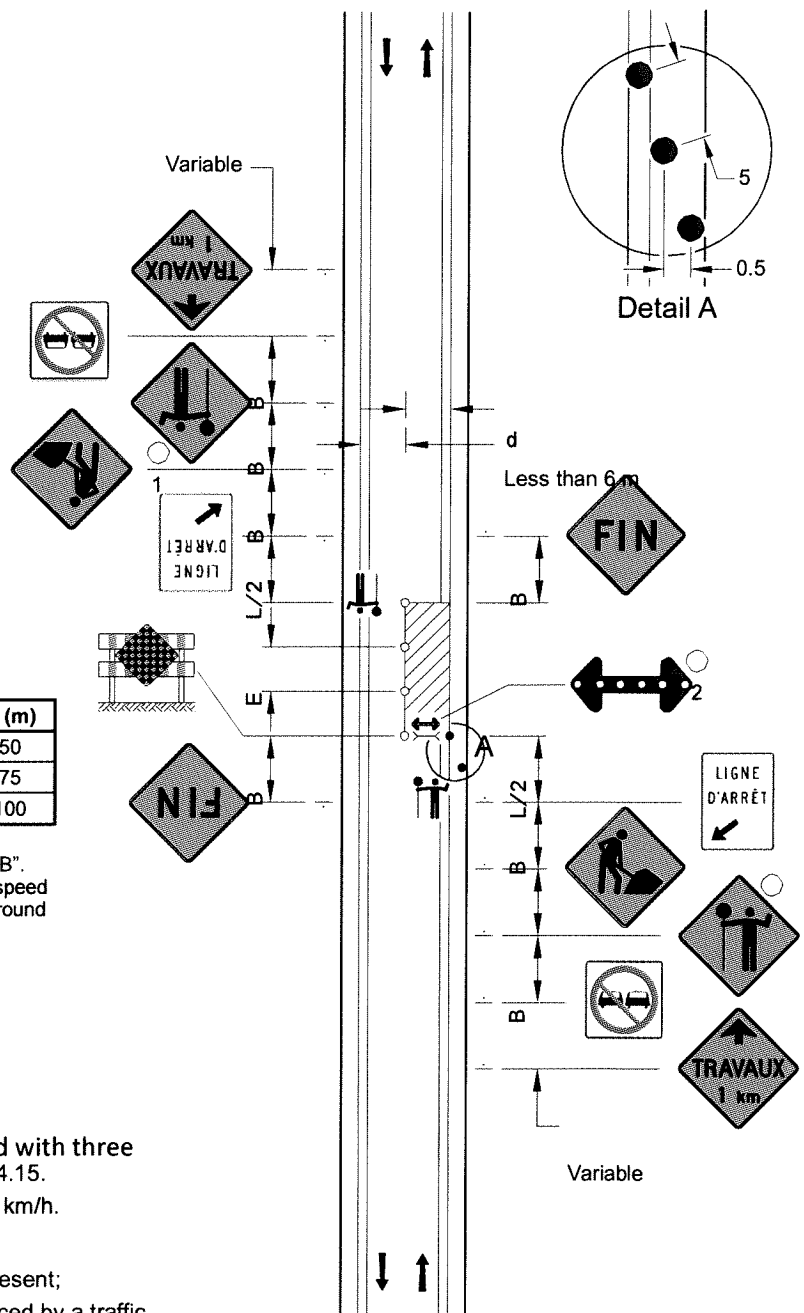
○

This sign must always be used with three flags, as indicated in Section 4.15.

2 Required on roads where V ≥ 70 km/h.

Notes:

- flaggers must be continuously present;
- one of the flaggers may be replaced by a traffic light operated remotely by flagger;
- dimensions are in metres.





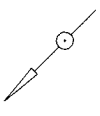












LEGER LEGEND

1	PROPOSED ROAD
2	EXISTING ROAD
3	PROPOSED SIDEWALK
4	EXISTING SIDEWALK
5	PROPOSED BIKEWAY
6	EXISTING BIKEWAY
7	PROPOSED TRAIL
8	EXISTING TRAIL
9	PROPOSED FENCE
10	EXISTING FENCE
11	PROPOSED UTILITY
12	EXISTING UTILITY
13	PROPOSED DRAINAGE
14	EXISTING DRAINAGE
15	PROPOSED VEGETATION
16	EXISTING VEGETATION
17	PROPOSED CLEARING
18	EXISTING CLEARING
19	PROPOSED CONSTRUCTION
20	EXISTING CONSTRUCTION
21	PROPOSED EROSION CONTROL
22	EXISTING EROSION CONTROL
23	PROPOSED SIGNAGE
24	EXISTING SIGNAGE
25	PROPOSED LIGHTING
26	EXISTING LIGHTING
27	PROPOSED SECURITY
28	EXISTING SECURITY
29	PROPOSED FURNITURE
30	EXISTING FURNITURE
31	PROPOSED LANDSCAPE
32	EXISTING LANDSCAPE
33	PROPOSED HEDGING
34	EXISTING HEDGING
35	PROPOSED BOUNDARY
36	EXISTING BOUNDARY
37	PROPOSED ADJACENT PROPERTY
38	EXISTING ADJACENT PROPERTY
39	PROPOSED WATERWAY
40	EXISTING WATERWAY
41	PROPOSED WETLAND
42	EXISTING WETLAND
43	PROPOSED SLOPE
44	EXISTING SLOPE
45	PROPOSED ELEVATION
46	EXISTING ELEVATION
47	PROPOSED PROPERTY LINE
48	EXISTING PROPERTY LINE
49	PROPOSED ADJACENT ROAD
50	EXISTING ADJACENT ROAD
51	PROPOSED ADJACENT TRAIL
52	EXISTING ADJACENT TRAIL
53	PROPOSED ADJACENT BIKEWAY
54	EXISTING ADJACENT BIKEWAY
55	PROPOSED ADJACENT SIDEWALK
56	EXISTING ADJACENT SIDEWALK
57	PROPOSED ADJACENT UTILITY
58	EXISTING ADJACENT UTILITY
59	PROPOSED ADJACENT DRAINAGE
60	EXISTING ADJACENT DRAINAGE
61	PROPOSED ADJACENT VEGETATION
62	EXISTING ADJACENT VEGETATION
63	PROPOSED ADJACENT CLEARING
64	EXISTING ADJACENT CLEARING
65	PROPOSED ADJACENT CONSTRUCTION
66	EXISTING ADJACENT CONSTRUCTION
67	PROPOSED ADJACENT EROSION CONTROL
68	EXISTING ADJACENT EROSION CONTROL
69	PROPOSED ADJACENT SIGNAGE
70	EXISTING ADJACENT SIGNAGE
71	PROPOSED ADJACENT LIGHTING
72	EXISTING ADJACENT LIGHTING
73	PROPOSED ADJACENT SECURITY
74	EXISTING ADJACENT SECURITY
75	PROPOSED ADJACENT FURNITURE
76	EXISTING ADJACENT FURNITURE
77	PROPOSED ADJACENT LANDSCAPE
78	EXISTING ADJACENT LANDSCAPE
79	PROPOSED ADJACENT HEDGING
80	EXISTING ADJACENT HEDGING
81	PROPOSED ADJACENT BOUNDARY
82	EXISTING ADJACENT BOUNDARY
83	PROPOSED ADJACENT PROPERTY
84	EXISTING ADJACENT PROPERTY
85	PROPOSED ADJACENT WATERWAY
86	EXISTING ADJACENT WATERWAY
87	PROPOSED ADJACENT WETLAND
88	EXISTING ADJACENT WETLAND
89	PROPOSED ADJACENT SLOPE
90	EXISTING ADJACENT SLOPE
91	PROPOSED ADJACENT ELEVATION
92	EXISTING ADJACENT ELEVATION
93	PROPOSED ADJACENT PROPERTY LINE
94	EXISTING ADJACENT PROPERTY LINE
95	PROPOSED ADJACENT ROAD
96	EXISTING ADJACENT ROAD
97	PROPOSED ADJACENT TRAIL
98	EXISTING ADJACENT TRAIL
99	PROPOSED ADJACENT BIKEWAY
100	EXISTING ADJACENT BIKEWAY
101	PROPOSED ADJACENT SIDEWALK
102	EXISTING ADJACENT SIDEWALK
103	PROPOSED ADJACENT UTILITY
104	EXISTING ADJACENT UTILITY
105	PROPOSED ADJACENT DRAINAGE
106	EXISTING ADJACENT DRAINAGE
107	PROPOSED ADJACENT VEGETATION
108	EXISTING ADJACENT VEGETATION
109	PROPOSED ADJACENT CLEARING
110	EXISTING ADJACENT CLEARING
111	PROPOSED ADJACENT CONSTRUCTION
112	EXISTING ADJACENT CONSTRUCTION
113	PROPOSED ADJACENT EROSION CONTROL
114	EXISTING ADJACENT EROSION CONTROL
115	PROPOSED ADJACENT SIGNAGE
116	EXISTING ADJACENT SIGNAGE
117	PROPOSED ADJACENT LIGHTING
118	EXISTING ADJACENT LIGHTING
119	PROPOSED ADJACENT SECURITY
120	EXISTING ADJACENT SECURITY
121	PROPOSED ADJACENT FURNITURE
122	EXISTING ADJACENT FURNITURE
123	PROPOSED ADJACENT LANDSCAPE
124	EXISTING ADJACENT LANDSCAPE
125	PROPOSED ADJACENT HEDGING
126	EXISTING ADJACENT HEDGING
127	PROPOSED ADJACENT BOUNDARY
128	EXISTING ADJACENT BOUNDARY
129	PROPOSED ADJACENT PROPERTY
130	EXISTING ADJACENT PROPERTY
131	PROPOSED ADJACENT WATERWAY
132	EXISTING ADJACENT WATERWAY
133	PROPOSED ADJACENT WETLAND
134	EXISTING ADJACENT WETLAND
135	PROPOSED ADJACENT SLOPE
136	EXISTING ADJACENT SLOPE
137	PROPOSED ADJACENT ELEVATION
138	EXISTING ADJACENT ELEVATION
139	PROPOSED ADJACENT PROPERTY LINE
140	EXISTING ADJACENT PROPERTY LINE
141	PROPOSED ADJACENT ROAD
142	EXISTING ADJACENT ROAD
143	PROPOSED ADJACENT TRAIL
144	EXISTING ADJACENT TRAIL
145	PROPOSED ADJACENT BIKEWAY
146	EXISTING ADJACENT BIKEWAY
147	PROPOSED ADJACENT SIDEWALK
148	EXISTING ADJACENT SIDEWALK
149	PROPOSED ADJACENT UTILITY
150	EXISTING ADJACENT UTILITY
151	PROPOSED ADJACENT DRAINAGE
152	EXISTING ADJACENT DRAINAGE
153	PROPOSED ADJACENT VEGETATION
154	EXISTING ADJACENT VEGETATION
155	PROPOSED ADJACENT CLEARING
156	EXISTING ADJACENT CLEARING
157	PROPOSED ADJACENT CONSTRUCTION
158	EXISTING ADJACENT CONSTRUCTION
159	PROPOSED ADJACENT EROSION CONTROL
160	EXISTING ADJACENT EROSION CONTROL
161	PROPOSED ADJACENT SIGNAGE
162	EXISTING ADJACENT SIGNAGE
163	PROPOSED ADJACENT LIGHTING
164	EXISTING ADJACENT LIGHTING
165	PROPOSED ADJACENT SECURITY
166	EXISTING ADJACENT SECURITY
167	PROPOSED ADJACENT FURNITURE
168	EXISTING ADJACENT FURNITURE
169	PROPOSED ADJACENT LANDSCAPE
170	EXISTING ADJACENT LANDSCAPE
171	PROPOSED ADJACENT HEDGING
172	EXISTING ADJACENT HEDGING
173	PROPOSED ADJACENT BOUNDARY
174	EXISTING ADJACENT BOUNDARY
175	PROPOSED ADJACENT PROPERTY
176	EXISTING ADJACENT PROPERTY
177	PROPOSED ADJACENT WATERWAY
178	EXISTING ADJACENT WATERWAY
179	PROPOSED ADJACENT WETLAND
180	EXISTING ADJACENT WETLAND
181	PROPOSED ADJACENT SLOPE
182	EXISTING ADJACENT SLOPE
183	PROPOSED ADJACENT ELEVATION
184	EXISTING ADJACENT ELEVATION
185	PROPOSED ADJACENT PROPERTY LINE
186	EXISTING ADJACENT PROPERTY LINE
187	PROPOSED ADJACENT ROAD
188	EXISTING ADJACENT ROAD
189	PROPOSED ADJACENT TRAIL
190	EXISTING ADJACENT TRAIL
191	PROPOSED ADJACENT BIKEWAY
192	EXISTING ADJACENT BIKEWAY
193	PROPOSED ADJACENT SIDEWALK
194	EXISTING ADJACENT SIDEWALK
195	PROPOSED ADJACENT UTILITY
196	EXISTING ADJACENT UTILITY
197	PROPOSED ADJACENT DRAINAGE
198	EXISTING ADJACENT DRAINAGE
199	PROPOSED ADJACENT VEGETATION
200	EXISTING ADJACENT VEGETATION
201	PROPOSED ADJACENT CLEARING
202	EXISTING ADJACENT CLEARING
203	PROPOSED ADJACENT CONSTRUCTION
204	EXISTING ADJACENT CONSTRUCTION
205	PROPOSED ADJACENT EROSION CONTROL
206	EXISTING ADJACENT EROSION CONTROL
207	PROPOSED ADJACENT SIGNAGE
208	EXISTING ADJACENT SIGNAGE
209	PROPOSED ADJACENT LIGHTING
210	EXISTING ADJACENT LIGHTING
211	PROPOSED ADJACENT SECURITY
212	EXISTING ADJACENT SECURITY
213	PROPOSED ADJACENT FURNITURE
214	EXISTING ADJACENT FURNITURE
215	PROPOSED ADJACENT LANDSCAPE
216	EXISTING ADJACENT LANDSCAPE
217	PROPOSED ADJACENT HEDGING
218	EXISTING ADJACENT HEDGING
219	PROPOSED ADJACENT BOUNDARY
220	EXISTING ADJACENT BOUNDARY
221	PROPOSED ADJACENT PROPERTY
222	EXISTING ADJACENT PROPERTY
223	PROPOSED ADJACENT WATERWAY
224	EXISTING ADJACENT WATERWAY
225	PROPOSED ADJACENT WETLAND
226	EXISTING ADJACENT WETLAND
227	PROPOSED ADJACENT SLOPE
228	EXISTING ADJACENT SLOPE
229	PROPOSED ADJACENT ELEVATION
230	EXISTING ADJACENT ELEVATION
231	PROPOSED ADJACENT PROPERTY LINE
232	EXISTING ADJACENT PROPERTY LINE
233	PROPOSED ADJACENT ROAD
234	EXISTING ADJACENT ROAD
235	PROPOSED ADJACENT TRAIL
236	EXISTING ADJACENT TRAIL
237	PROPOSED ADJACENT BIKEWAY
238	EXISTING ADJACENT BIKEWAY
239	PROPOSED ADJACENT SIDEWALK
240	EXISTING ADJACENT SIDEWALK
241	PROPOSED ADJACENT UTILITY
242	EXISTING ADJACENT UTILITY
243	PROPOSED ADJACENT DRAINAGE
244	EXISTING ADJACENT DRAINAGE
245	PROPOSED ADJACENT VEGETATION
246	EXISTING ADJACENT VEGETATION
247	PROPOSED ADJACENT CLEARING
248	EXISTING ADJACENT CLEARING
249	PROPOSED ADJACENT CONSTRUCTION
250	EXISTING ADJACENT CONSTRUCTION
251	PROPOSED ADJACENT EROSION CONTROL
252	EXISTING ADJACENT EROSION CONTROL
253	PROPOSED ADJACENT SIGNAGE
254	EXISTING ADJACENT SIGNAGE
255	PROPOSED ADJACENT LIGHTING
256	EXISTING ADJACENT LIGHTING
257	PROPOSED ADJACENT SECURITY
258	EXISTING ADJACENT SECURITY
259	PROPOSED ADJACENT FURNITURE
260	EXISTING ADJACENT FURNITURE
261	PROPOSED ADJACENT LANDSCAPE
262	EXISTING ADJACENT LANDSCAPE
263	PROPOSED ADJACENT HEDGING
264	EXISTING ADJACENT HEDGING
265	PROPOSED ADJACENT BOUNDARY
266	EXISTING ADJACENT BOUNDARY
267	PROPOSED ADJACENT PROPERTY
268	EXISTING ADJACENT PROPERTY
269	PROPOSED ADJACENT WATERWAY
270	EXISTING ADJACENT WATERWAY
271	PROPOSED ADJACENT WETLAND
272	EXISTING ADJACENT WETLAND
273	PROPOSED ADJACENT SLOPE
274	EXISTING ADJACENT SLOPE
275	PROPOSED ADJACENT ELEVATION
276	EXISTING ADJACENT ELEVATION
277	PROPOSED ADJACENT PROPERTY LINE
278	EXISTING ADJACENT PROPERTY LINE
279	PROPOSED ADJACENT ROAD
280	EXISTING ADJACENT ROAD
281	PROPOSED ADJACENT TRAIL
282	EXISTING ADJACENT TRAIL
283	PROPOSED ADJACENT BIKEWAY
284	EXISTING ADJACENT BIKEWAY
285	PROPOSED ADJACENT SIDEWALK
286	EXISTING ADJACENT SIDEWALK
287	PROPOSED ADJACENT UTILITY
288	EXISTING ADJACENT UTILITY
289	PROPOSED ADJACENT DRAINAGE
290	EXISTING ADJACENT DRAINAGE
291	PROPOSED ADJACENT VEGETATION
292	EXISTING ADJACENT VEGETATION
293	PROPOSED ADJACENT CLEARING
294	EXISTING ADJACENT CLEARING
295	PROPOSED ADJACENT CONSTRUCTION
296	EXISTING ADJACENT CONSTRUCTION
297	PROPOSED ADJACENT EROSION CONTROL
298	EXISTING ADJACENT EROSION CONTROL
299	PROPOSED ADJACENT SIGNAGE
300	EXISTING ADJACENT SIGNAGE
301	PROPOSED ADJACENT LIGHTING
302	EXISTING ADJACENT LIGHTING
303	PROPOSED ADJACENT SECURITY
304	EXISTING ADJACENT SECURITY
305	PROPOSED ADJACENT FURNITURE
306	EXISTING ADJACENT FURNITURE
307	PROPOSED ADJACENT LANDSCAPE
308	EXISTING ADJACENT LANDSCAPE
309	PROPOSED ADJACENT HEDGING
310	EXISTING ADJACENT HEDGING
311	PROPOSED ADJACENT BOUNDARY
312	EXISTING ADJACENT BOUNDARY
313	PROPOSED ADJACENT PROPERTY
314	EXISTING ADJACENT PROPERTY
315	PROPOSED ADJACENT WATERWAY
316	EXISTING ADJACENT WATERWAY
317	PROPOSED ADJACENT WETLAND
318	EXISTING ADJACENT WETLAND
319	PROPOSED ADJACENT SLOPE
320	EXISTING ADJACENT SLOPE
321	PROPOSED ADJACENT ELEVATION
322	EXISTING ADJACENT ELEVATION
323	PROPOSED ADJACENT PROPERTY LINE
324	EXISTING ADJACENT PROPERTY LINE
325	PROPOSED ADJACENT ROAD
326	EXISTING ADJACENT ROAD
327	PROPOSED ADJACENT TRAIL
328	EXISTING ADJACENT TRAIL
329	PROPOSED ADJACENT BIKEWAY
330	EXISTING ADJACENT BIKEWAY
331	PROPOSED ADJACENT SIDEWALK
332	EXISTING ADJACENT SIDEWALK
333	PROPOSED ADJACENT UTILITY
334	EXISTING ADJACENT UTILITY
335	PROPOSED ADJACENT DRAINAGE
336	EXISTING ADJACENT DRAINAGE
337	PROPOSED ADJACENT VEGETATION
338	EXISTING ADJACENT VEGETATION
339	PROPOSED ADJACENT CLEARING
340	EXISTING ADJACENT CLEARING
341	PROPOSED ADJACENT CONSTRUCTION
342	EXISTING ADJACENT CONSTRUCTION
343	PROPOSED ADJACENT EROSION CONTROL
344	EXISTING ADJACENT EROSION CONTROL
345	PROPOSED ADJACENT SIGNAGE
346	EXISTING ADJACENT SIGNAGE
347	PROPOSED ADJACENT LIGHTING
348	EXISTING ADJACENT LIGHTING
349	PROPOSED ADJACENT SECURITY
350	EXISTING ADJACENT SECURITY
351	PROPOSED ADJACENT FURNITURE
352	EXISTING ADJACENT FURNITURE
353	PROPOSED ADJACENT LANDSCAPE
354	EXISTING ADJACENT LANDSCAPE
355	PROPOSED ADJACENT HEDGING
356	EXISTING ADJACENT HEDGING
357	PROPOSED ADJACENT BOUNDARY
358	EXISTING ADJACENT BOUNDARY
359	PROPOSED ADJACENT PROPERTY
360	EXISTING ADJACENT PROPERTY
361	PROPOSED ADJACENT WATERWAY
362	EXISTING ADJACENT WATERWAY
363	PROPOSED ADJACENT WETLAND
364	EXISTING ADJACENT WETLAND
365	PROPOSED ADJACENT SLOPE
366	EXISTING ADJACENT SLOPE
367	PROPOSED ADJACENT ELEVATION
368	EXISTING ADJACENT ELEVATION
369	PROPOSED ADJACENT PROPERTY LINE
370	EXISTING ADJACENT PROPERTY LINE
371	PROPOSED ADJACENT ROAD
372	EXISTING ADJACENT ROAD
373	PROPOSED ADJACENT TRAIL
374	EXISTING ADJACENT TRAIL
375	PROPOSED ADJACENT BIKEWAY
376	EXISTING ADJACENT BIKEWAY
377	PROPOSED ADJACENT SIDEWALK
378	EXISTING ADJACENT SIDEWALK
379	PROPOSED ADJACENT UTILITY
380	EXISTING ADJACENT UTILITY
381	PROPOSED ADJACENT DRAINAGE
382	EXISTING ADJACENT DRAINAGE
383	PROPOSED ADJACENT VEGETATION
384	EXISTING ADJACENT VEGETATION
385	PROPOSED ADJACENT CLEARING
386	EXISTING ADJACENT CLEARING
387	PROPOSED ADJACENT CONSTRUCTION
388	EXISTING ADJACENT CONSTRUCTION
389	PROPOSED ADJACENT EROSION CONTROL
390	EXISTING ADJACENT EROSION CONTROL
391	PROPOSED ADJACENT SIGNAGE
392	EXISTING ADJACENT SIGNAGE
393	PROPOSED ADJACENT LIGHTING
394	EXISTING ADJACENT LIGHTING
395	PROPOSED ADJACENT SECURITY
396	EXISTING ADJACENT SECURITY
397	PROPOSED ADJACENT FURNITURE
398	EXISTING ADJACENT FURNITURE
399	PROPOSED ADJACENT LANDSCAPE
400	EXISTING ADJACENT LANDSCAPE
401	PROPOSED ADJACENT HEDGING
402	EXISTING ADJACENT HEDGING
403	PROPOSED ADJACENT BOUNDARY
404	EXISTING ADJACENT BOUNDARY
405	PROPOSED ADJACENT PROPERTY
406	EXISTING ADJACENT PROPERTY
407	PROPOSED ADJACENT WATERWAY
408	EXISTING ADJACENT WATERWAY
409	PROPOSED ADJACENT WETLAND
410	EXISTING ADJACENT WETLAND
411	PROPOSED ADJACENT SLOPE
412	EXISTING ADJACENT SLOPE
413	PROPOSED ADJACENT ELEVATION
414	EXISTING ADJACENT ELEVATION
415	PROPOSED ADJACENT PROPERTY LINE
416	EXISTING ADJACENT PROPERTY LINE
417	PROPOSED ADJACENT ROAD
418	EXISTING ADJACENT ROAD
419	PROPOSED ADJACENT TRAIL
420	EXISTING ADJACENT TRAIL
421	PROPOSED ADJACENT BIKEWAY
422	EXISTING ADJACENT BIKEWAY
423	PROPOSED ADJACENT SIDEWALK
424	EXISTING ADJACENT SIDEWALK
425	PROPOSED ADJACENT UTILITY
426	EXISTING ADJACENT UTILITY
427	PROPOSED ADJACENT DRAINAGE
428	EXISTING ADJACENT DRAINAGE
429	PROPOSED ADJACENT VEGETATION
430	EXISTING ADJACENT VEGETATION
431	PROPOSED ADJACENT CLEARING
432	EXISTING ADJACENT CLEARING
433	PROPOSED ADJACENT CONSTRUCTION
434	EXISTING ADJACENT CONSTRUCTION
435	PROPOSED ADJACENT EROSION CONTROL
436	EXISTING ADJACENT EROSION CONTROL
437	PROPOSED ADJACENT SIGNAGE
438	EXISTING ADJACENT SIGNAGE
439	PROPOSED ADJACENT LIGHTING
440	EXISTING ADJACENT LIGHTING
441	PROPOSED ADJACENT SECURITY
442	EXISTING ADJACENT SECURITY
443	PROPOSED ADJACENT FURNITURE
444	EXISTING ADJACENT FURNITURE
445	PROPOSED ADJACENT LANDSCAPE
446	EXISTING ADJACENT LANDSCAPE
447	PROPOSED ADJACENT HEDGING
448	EXISTING ADJACENT HEDGING
449	PROPOSED ADJACENT BOUNDARY
450	EXISTING ADJACENT BOUNDARY
451	PROPOSED ADJACENT PROPERTY
452	EXISTING ADJACENT PROPERTY
453	PROPOSED ADJACENT WATERWAY
454	EXISTING ADJACENT WATERWAY
455	PROPOSED ADJACENT WETLAND
456	EXISTING ADJACENT WETLAND
457	PROPOSED ADJACENT SLOPE
458	EXISTING ADJACENT SLOPE
459	PROPOSED ADJACENT ELEVATION
460	EXISTING ADJACENT ELEVATION
461	PROPOSED ADJACENT PROPERTY LINE
462	EXISTING ADJACENT PROPERTY LINE
463	PROPOSED AD



















