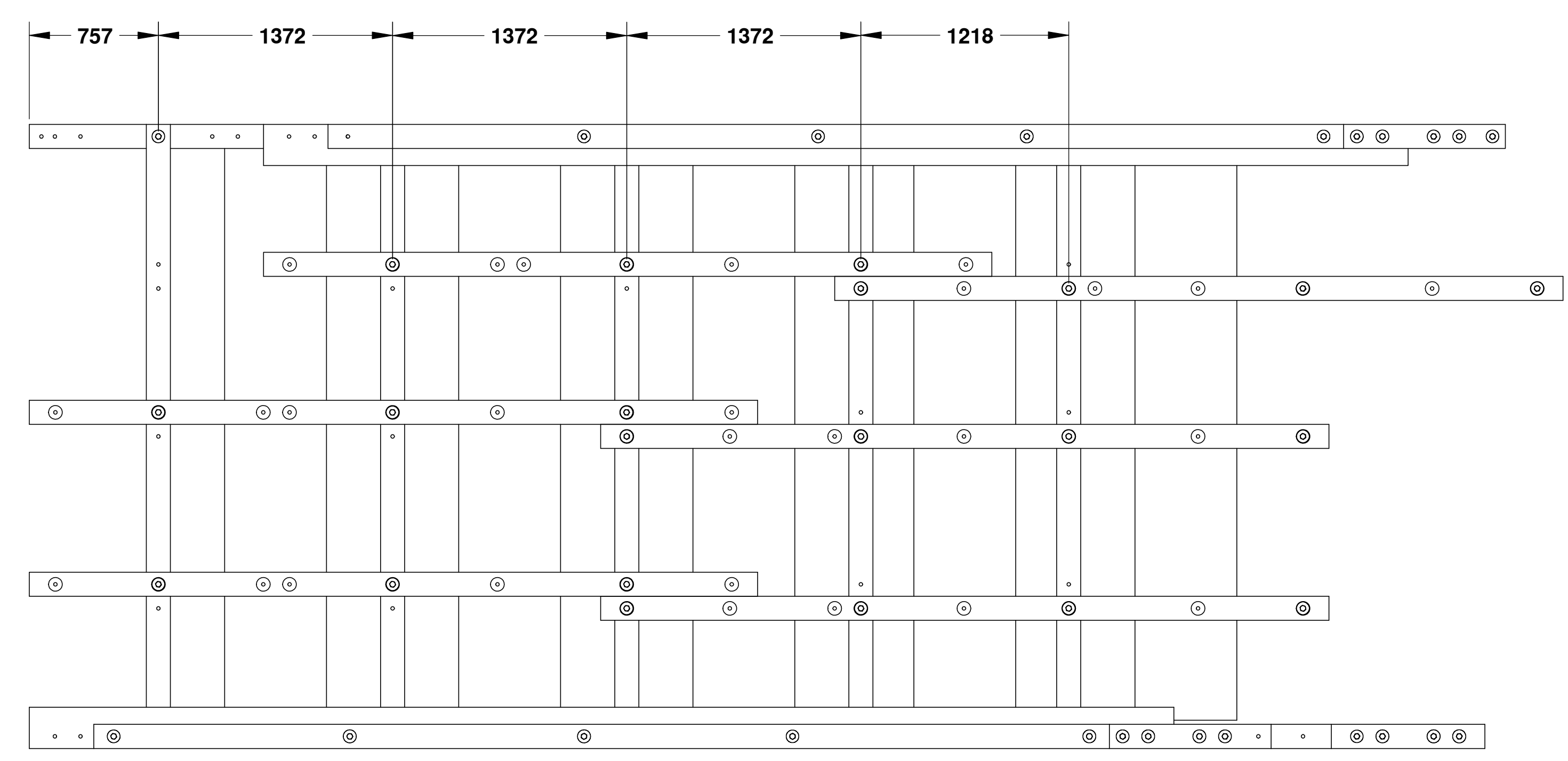


STANDARD 3.657M WIDE FLOAT MODULE - 2005 REVISION
WITH 141x141 CROSSTIE, 141x141 RISERS



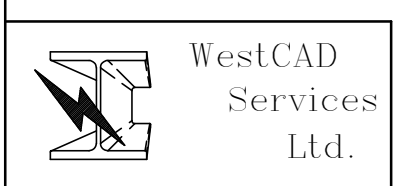
PLAN VIEW
SCALE: 1 - 25

TIMBER REQUIRED

ITEM NO.	QTY.	TIMBER MEMBER	DESCRIPTION	MATERIAL
1	5	CROSS TIES	(6x6) 141 x 141 x 3658 LG	14 LB CREOSOTE TREATMENT #1 BTR FIR
2	2	FLANGE	(6x8) 141 x 191 x 6706 LG	14 LB CREOSOTE TREATMENT #1 BTR FIR
3	2	STRINGER	(6x10) 141 x 241 x 6706 LG	14 LB CREOSOTE TREATMENT #1 BTR FIR
4	6	JOISTS	(6x6) 141 x 141 x 4267 LG	14 LB CREOSOTE TREATMENT #1 BTR FIR
5	6	RISER	(6x6) 141 x 141 x 305 LG	ACZA
6	2	LOWER STRINGER SPLICE	(6x6) 141 x 141 x 900 LG	14 LB CREOSOTE TREATMENT #1 BTR FIR
7	2	LOWER FLANGE SPLICE	(6x6) 141 x 141 x 900 LG	14 LB CREOSOTE TREATMENT #1 BTR FIR
8	2	UPPER FLANGE SPLICE	(6x6) 141 x 141 x 900 LG	14 LB CREOSOTE TREATMENT #1 BTR FIR
13	2	UPPER STRINGER SPLICE	(6x6) 141 x 141 x 1140 LG	ACZA
14	2	RAIL	(4x6) 89 x 141 x 5950 LG	ACZA
17	5	FOAM BUOYANCY BILLET	610 X 597 x 3352 LG	
18	28	DECK PLANKS	(12x2) 305 x 38 x 3352 LG	ACZA

HARDWARE REQUIRED

ITEM NO.	QTY.	HARDWARE
9	21	HEX BOLT 19 x 300mm
10	114	WASHERS
11	57	HEX NUT 19mm DIA
12	10	HEX BOLT 19 x 406mm
15	16	HEX BOLT 19 x 660mm
16	10	HEX BOLT 19 x 508mm
19	264	GALVANIZED SPIRAL NAILS - 100mm LG



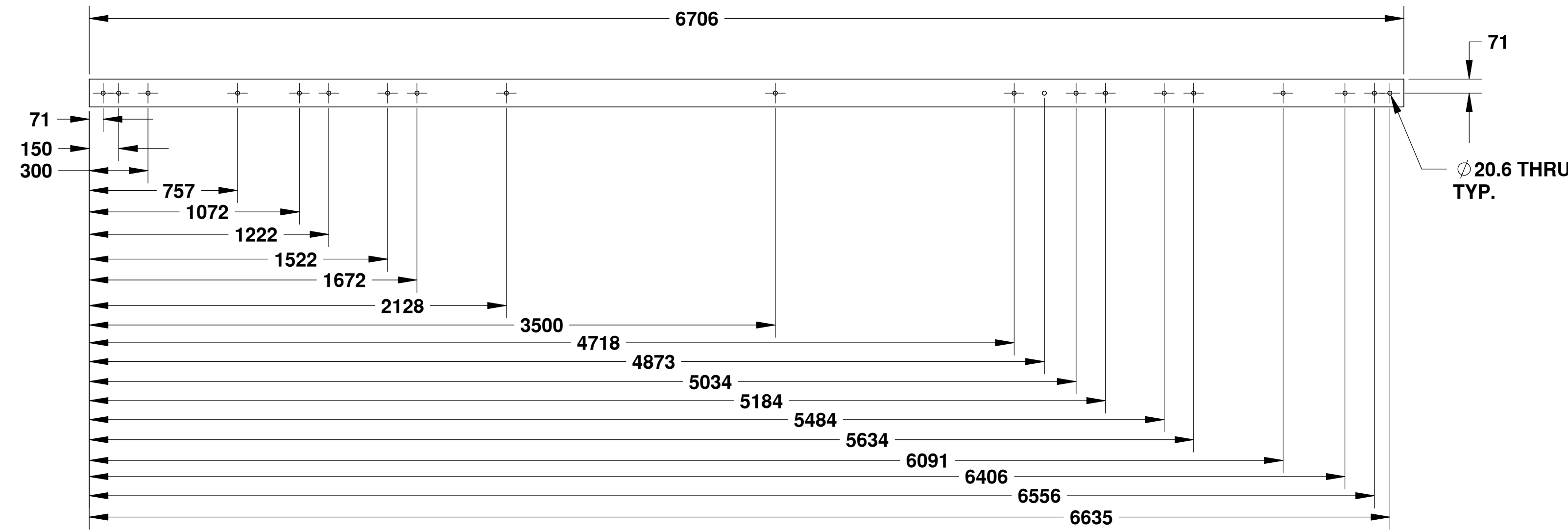
PROPRIETARY AND CONFIDENTIAL
THE INFORMATION CONTAINED IN THIS DRAWING IS THE SOLE PROPERTY OF HER MAJESTY'S GOVERNMENT OF CANADA. ANY REPRODUCTION IN PART OR AS A WHOLE WITHOUT THE WRITTEN PERMISSION OF HER MAJESTY'S GOVERNMENT OF CANADA IS PROHIBITED.

UNLESS OTHERWISE SPECIFIED: DIMENSIONS ARE IN INCHES TOLERANCES: FRACTIONAL ± ANGULAR: MACH ± TWO PLACE DECIMAL ± THREE PLACE DECIMAL ±	DATE 12/04	NAME BB
DRAWN	CHECKED	ENG APPR.
MFG APPR.	G.A.	COMMENTS:
INTERPRET GEOMETRIC TOLERANCING PER:	MATERIAL	FINISH
NEXT ASSEMBLY	USED ON	APPLICATION
		DO NOT SCALE DRAWING

Fisheries & Oceans / Pêches et Océans
Small Craft Harbours Branch

TITLE: '2005 REVISION' 3.657m WIDE STANDARD FLOAT MODULE ASSEMBLY
DWG. NO. FM12-ST-000
SCALE: 1:20 | WEIGHT: | SHEET 1 OF 1

FRONT

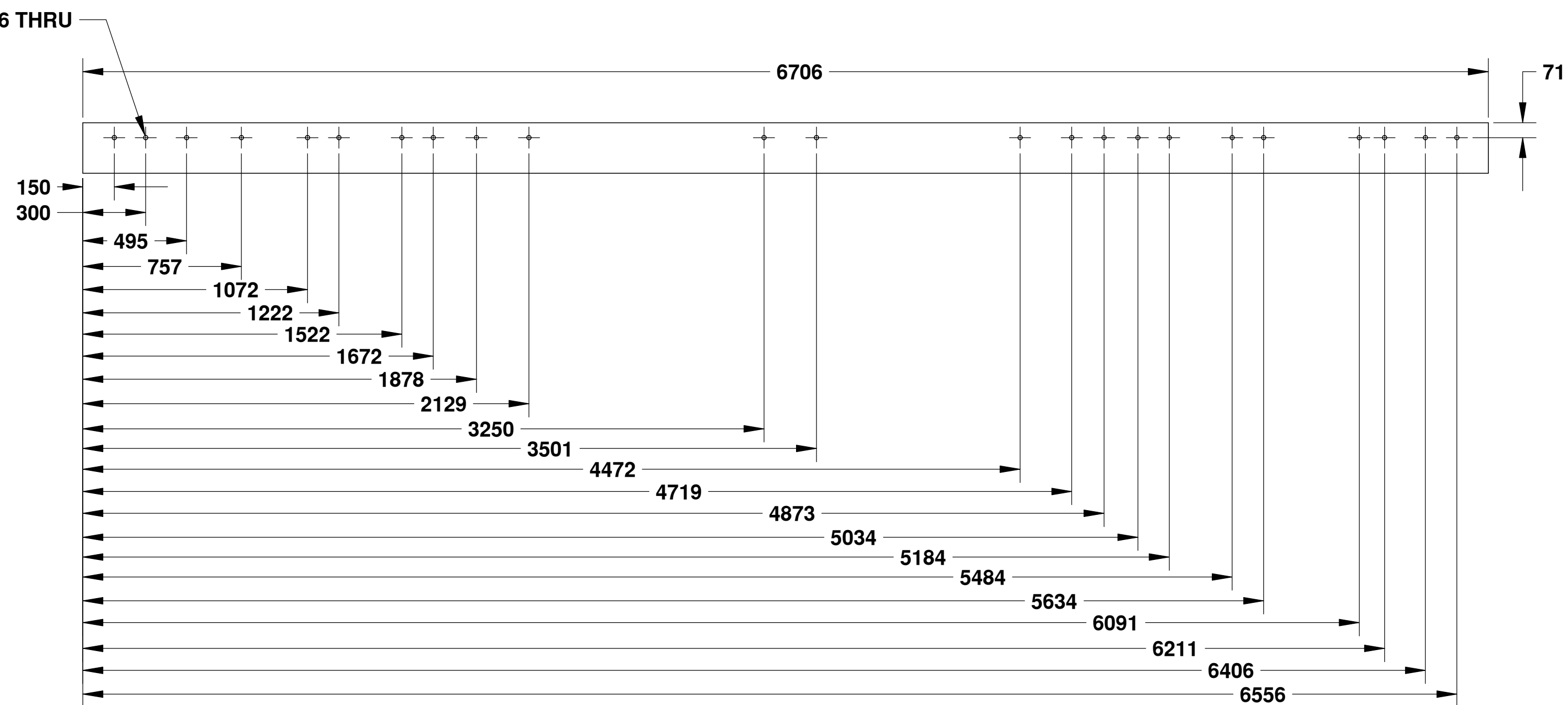


FLANGE

141 x 191 (6x8)
SCALE: 1-20
(2 REQUIRED)

2

FRONT

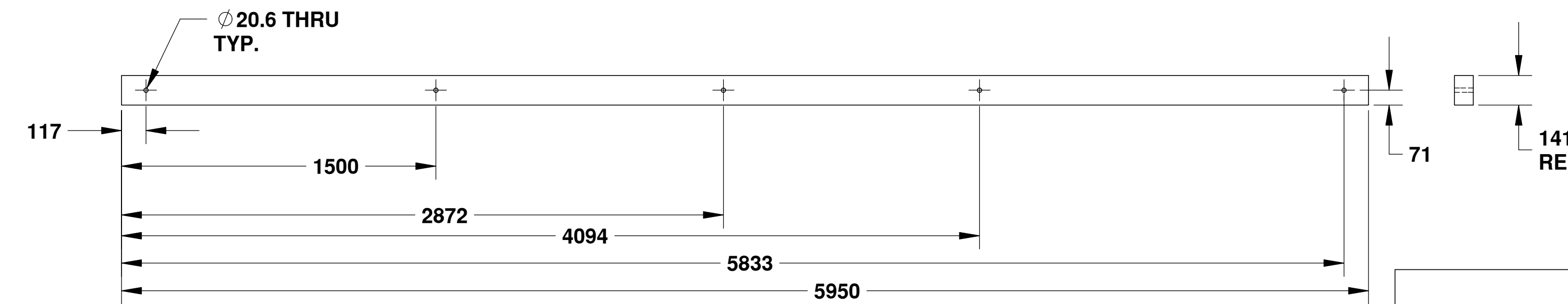


STRINGER

141 x 241 (6x10)
SCALE: 1-20
(2 REQUIRED)

3

FRONT



STANDARD RAIL

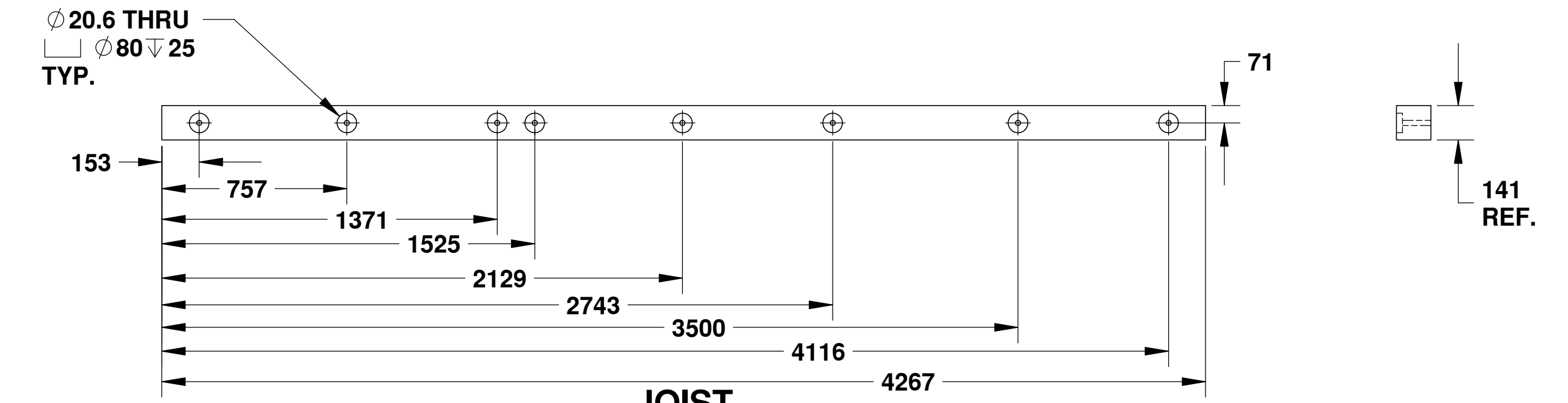
89 x 141 (4x6)
SCALE: 1-20
(2 REQUIRED)

14

FOAM BUOYANCY BILLET

SCALE: 1-20
(5 REQUIRED)

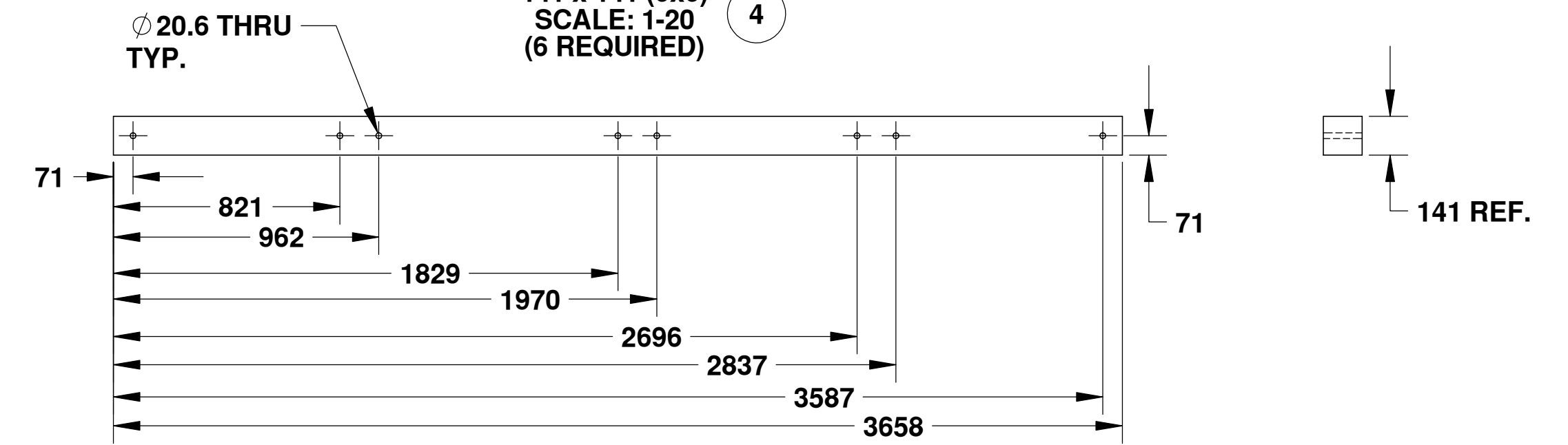
17



JOIST

141 x 141 (6x6)
SCALE: 1-20
(6 REQUIRED)

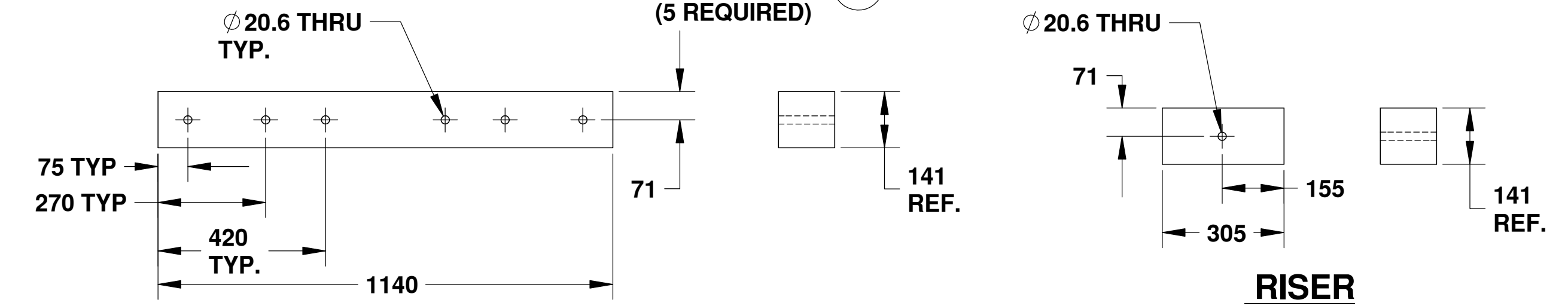
4



CROSSTIE

141 x 141 (6x6)
SCALE: 1-20
(5 REQUIRED)

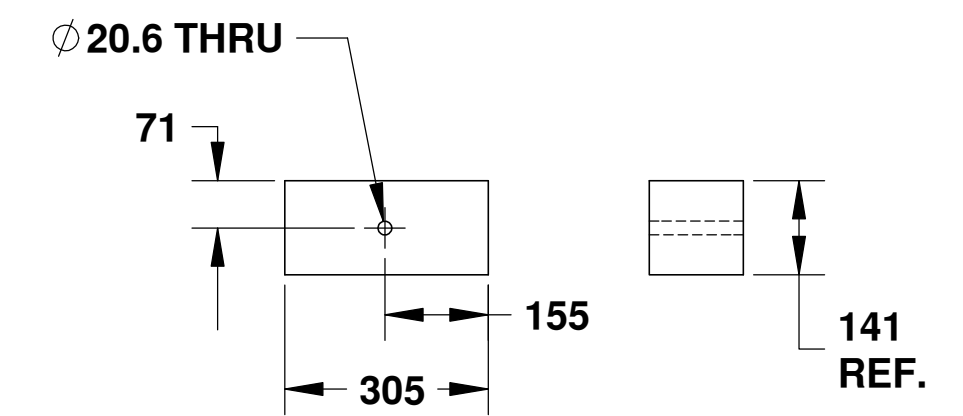
1



UPPER STRINGER SPLICE

141 x 141 (6x6)
SCALE: 1-20
(2 REQUIRED)

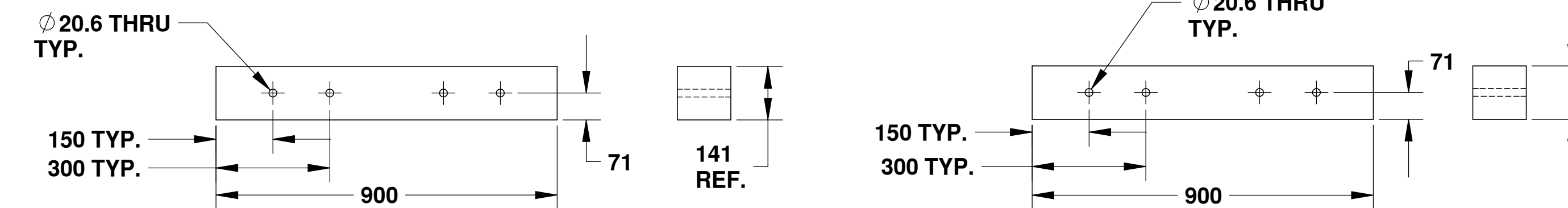
13



RISER

141 x 141 (6x6)
SCALE: 1-20
(6 REQUIRED)

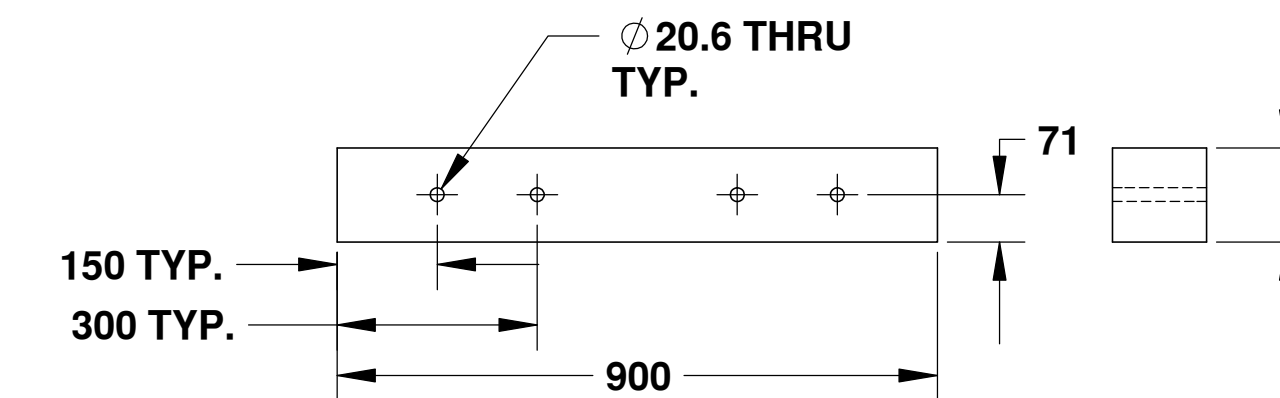
5



UPPER FLANGE SPLICE

141 x 141 (6x6)
SCALE: 1-20
(2 REQUIRED)

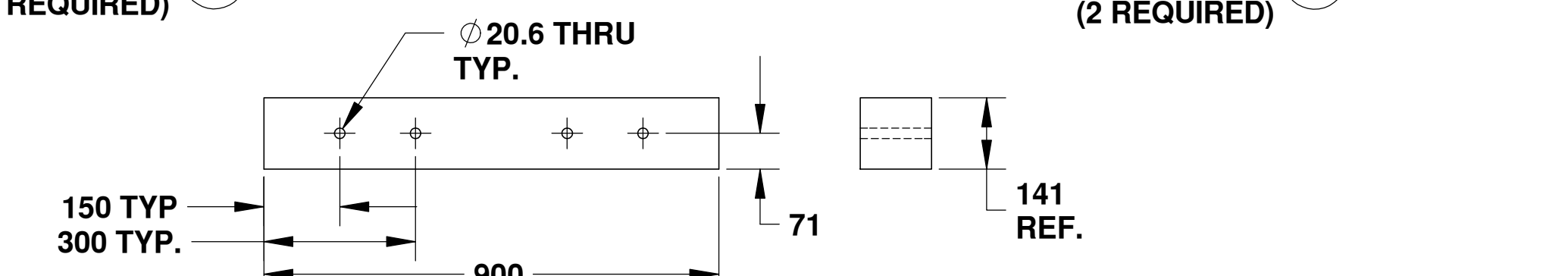
8



LOWER STRINGER SPLICE

141 x 141 (6x6)
SCALE: 1-20
(2 REQUIRED)

6



LOWER FLANGE SPLICE

141 x 141 (6x6)
SCALE: 1-20
(2 REQUIRED)

7



Small Craft Harbours Branch

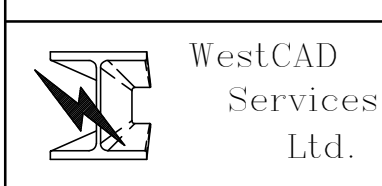
TITLE: '2005 REVISION' 3.657m WIDE STANDARD FLOAT MODULE

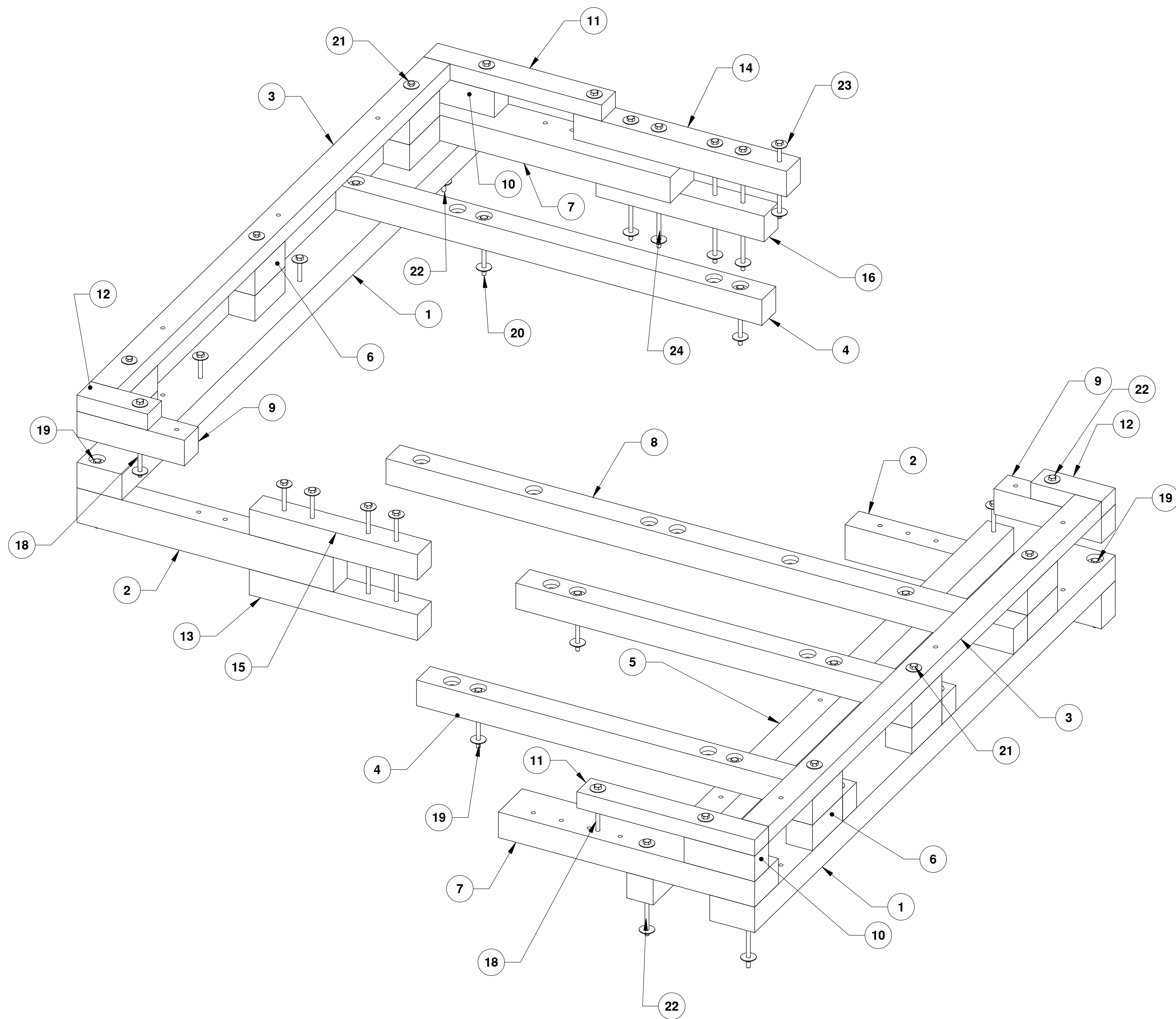
DWG. NO. FM12-ST-001 REV F

SCALE: 1:20 WEIGHT: SHEET 1 OF 1

PROPRIETARY AND CONFIDENTIAL THE INFORMATION CONTAINED IN THIS DRAWING IS THE SOLE PROPERTY OF HER MAJESTY'S GOVERNMENT OF CANADA ANY REPRODUCTION IN PART OR AS A WHOLE WITHOUT THE WRITTEN PERMISSION OF HER MAJESTY'S GOVERNMENT OF CANADA IS PROHIBITED.

UNLESS OTHERWISE SPECIFIED:		DATE	NAME
DIMENSIONS ARE IN INCHES		03/05	BB
TOLERANCES:			
FRACTIONAL ±			
ANGULAR: MACH ±			
TWO PLACE DECIMAL ±			
THREE PLACE DECIMAL ±			
INTERPRET GEOMETRIC TOLERANCING PER:			
MATERIAL			
NEXT ASST		USED ON	FINISH
APPLICATION			DO NOT SCALE DRAWING





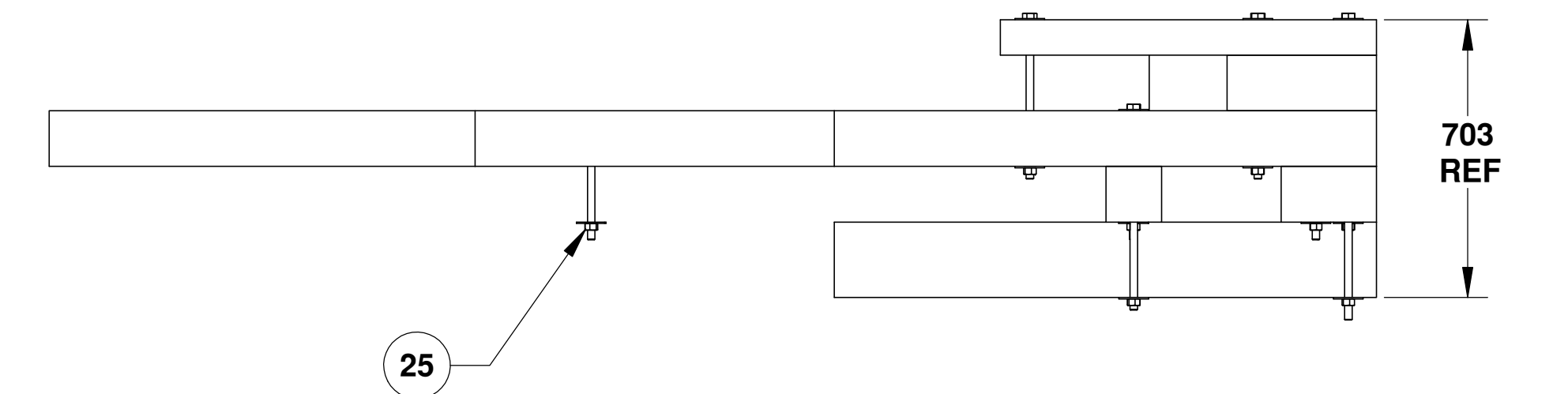
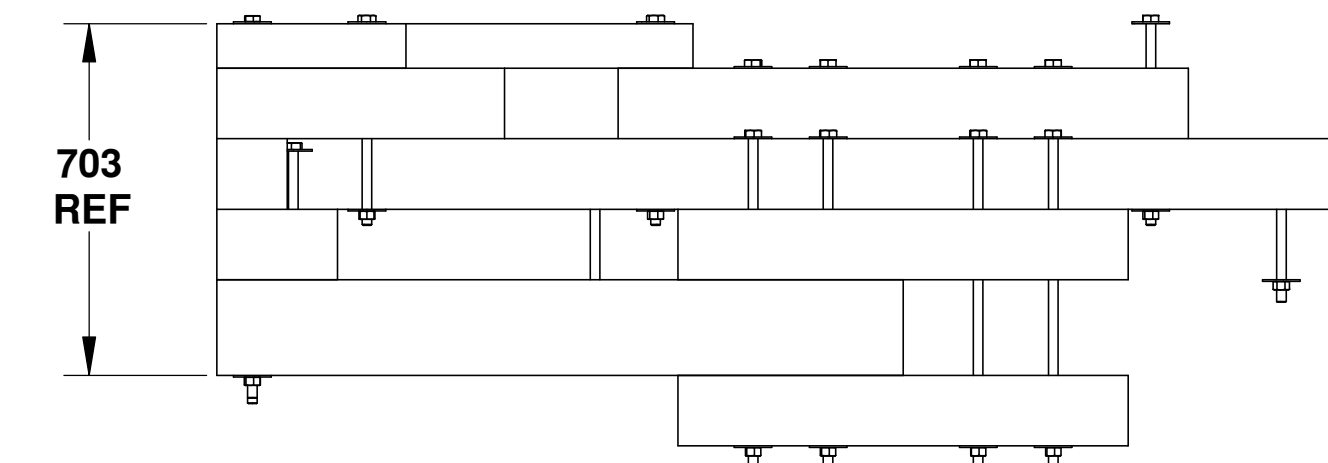
3.65m WIDE FLOAT END MODULES

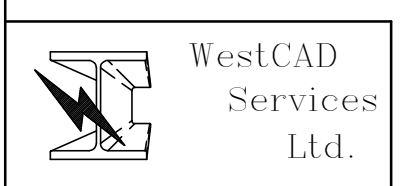
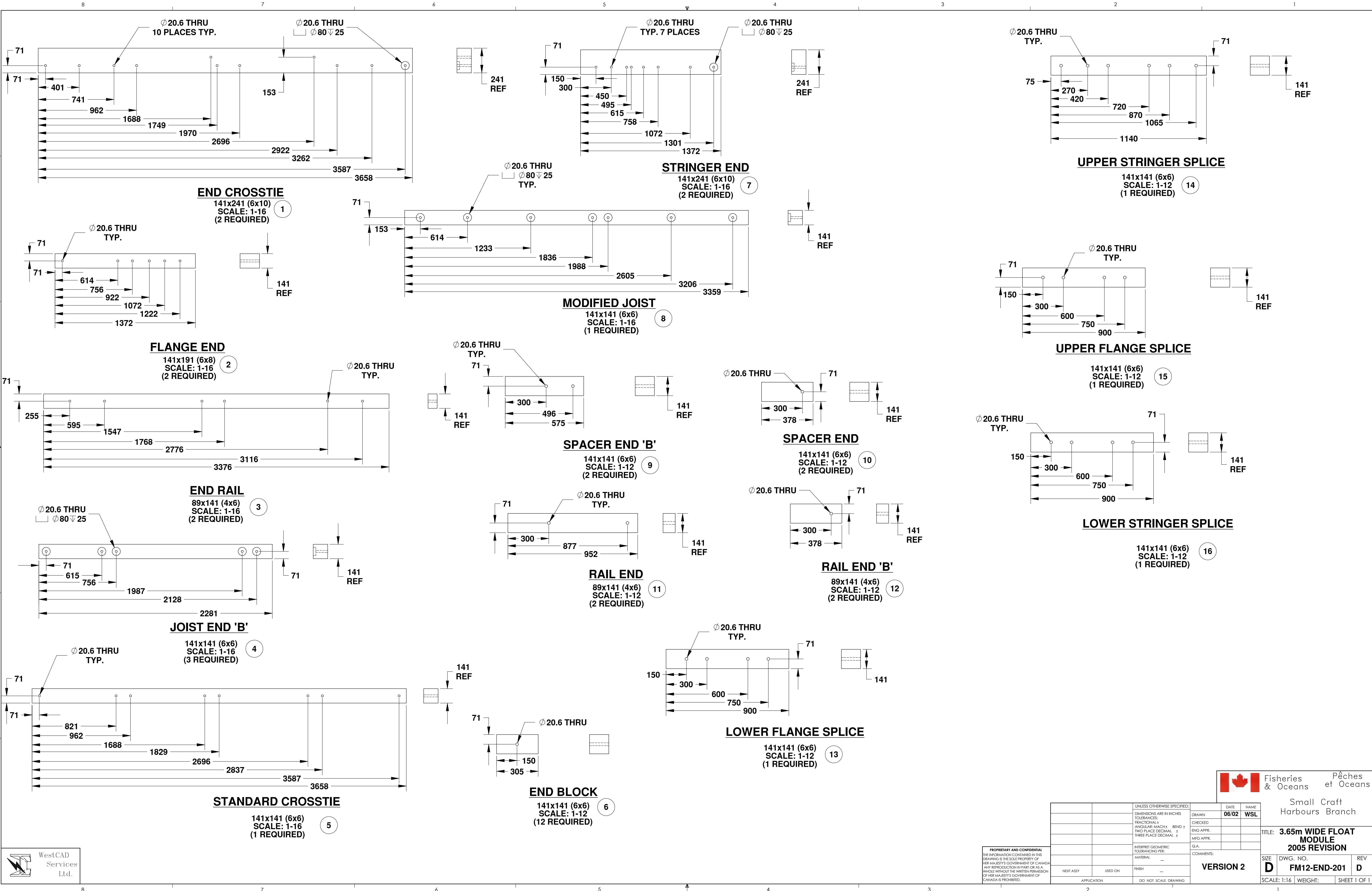
TIMBER MEMBER REQUIREMENTS

ITEM NO.	QTY.	TIMBER MEMBER	DESCRIPTION	MATERIAL
1	2	END CROSSTIE	(6x10) 141 x 241 x 3658 LG.	14 LB. CREOSOTE TREATMENT #1 BTR FIR
2	2	FLANGE END	(6x8) 141 x 191 x 1372 LG.	14 LB. CREOSOTE TREATMENT #1 BTR FIR
3	2	END RAIL	(4x6) 89 x 141 x 3376 LG.	ACZA
4	3	JOIST END 'B'	(6x6) 141 x 141 x 2281 LG	14 LB. CREOSOTE TREATMENT #1 BTR FIR
5	1	STANDARD CROSSTIE	(6x6) 141 x 141 x 3658 LG	14 LB. CREOSOTE TREATMENT #1 BTR FIR
6	12	END BLOCK	(6x6) 141 x 141 x 305 LG.	ACZA
7	2	STRINGER END	(6x10) 141 X 241 x 1372 LG.	14 LB. CREOSOTE TREATMENT #1 BTR FIR
8	1	MODIFIED JOIST	(6x6) 141 x 141 x 3359 LG.	14 LB. CREOSOTE TREATMENT #1 BTR FIR
9	2	SPACER END 'B'	(6x6) 141 x 141 x 575 LG.	ACZA
10	2	SPACER END	(6x6) 141 x 141 x 378 LG.	ACZA
11	2	RAIL END	(4x6) 89 x 141 x 952 LG.	ACZA
12	2	RAIL END 'B'	(4x6) 89 x 141 x 378 LG.	ACZA
13	1	LOWER FLANGE SPLICE	(6x6) 141 x 141 x 900 LG.	14 LB. CREOSOTE TREATMENT #1 BTR FIR
14	1	UPPER STRINGER SPLICE	(6x6) 141 x 141 x 1140 LG.	ACZA
15	1	UPPER FLANGE SPLICE	(6x6) 141 x 141 x 900 LG.	14 LB. CREOSOTE TREATMENT #1 BTR FIR
16	1	LOWER STRINGER SPLICE	(6x6) 141 x 141 x 900 LG.	14 LB. CREOSOTE TREATMENT #1 BTR FIR

HARDWARE REQUIREMENTS

ITEM NO.	QTY.	DESCRIPTION
18	7	HEX BOLT 19 x 406mm
19	2	HEX BOLT 19 x 356mm
20	13	HEX BOLT 19 x 300mm
21	6	HEX BOLT 19 x 557mm
22	4	HEX BOLT 19 x 508mm
23	80	WASHER 19mm DIA.
24	8	HEX BOLT 19 x 660mm
25	40	HEX NUT 19mm DIA.





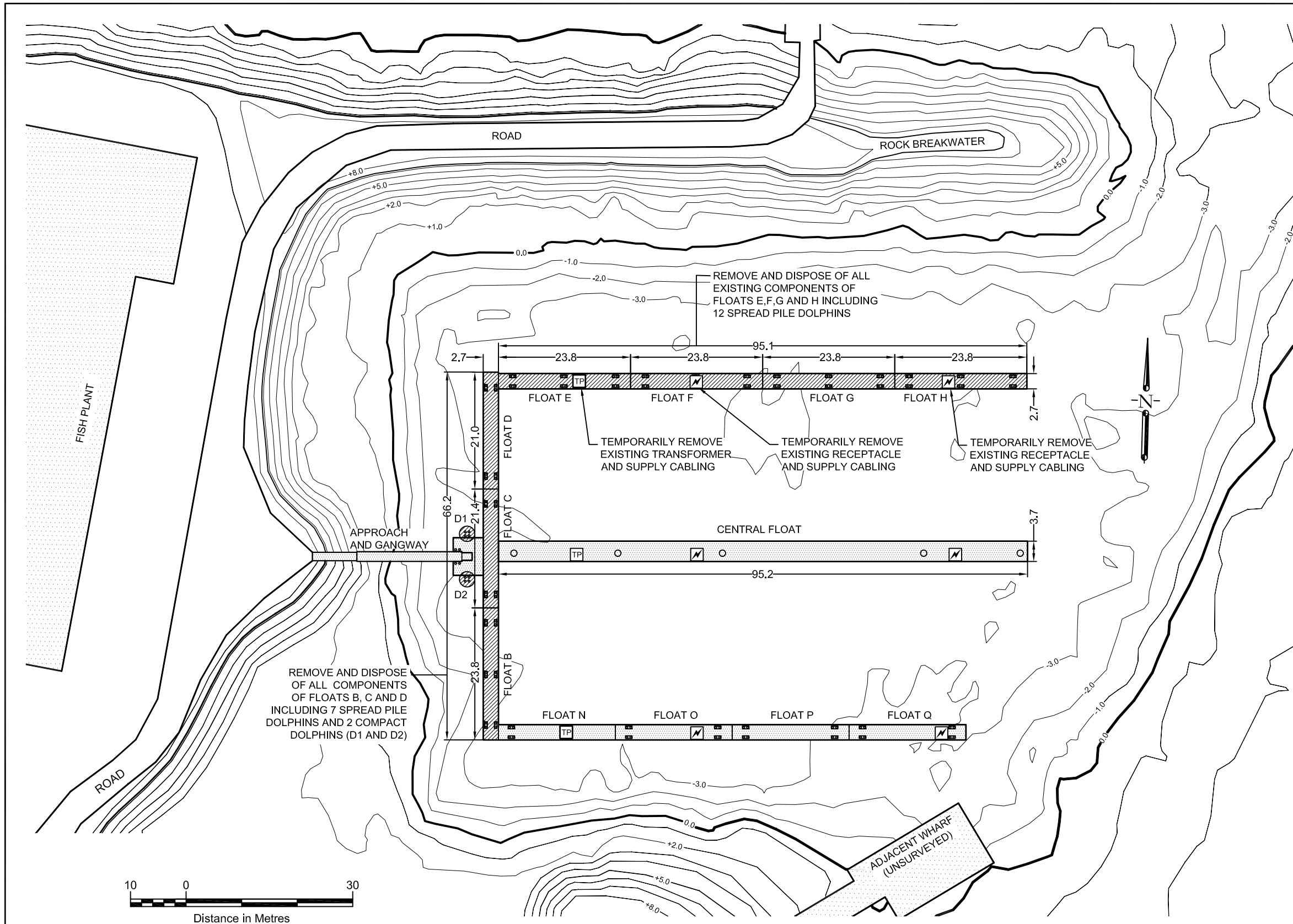
PROPRIETARY AND CONFIDENTIAL
 THE INFORMATION CONTAINED IN THIS DRAWING IS THE SOLE PROPERTY OF HER MAJESTY'S GOVERNMENT OF CANADA. ANY REPRODUCTION IN PART OR AS A WHOLE WITHOUT THE WRITTEN PERMISSION OF HER MAJESTY'S GOVERNMENT OF CANADA IS PROHIBITED.

UNLESS OTHERWISE SPECIFIED:		DATE	NAME
DIMENSIONS ARE IN INCHES		06/02	WSL
TOLERANCES:			
FRACTIONAL ±			
ANGULAR: MACH ±	BEND ±		
TWO PLACE DECIMAL ±	THREE PLACE DECIMAL ±		
INTERPRET GEOMETRIC TOLERANCING PER:			
MATERIAL	--		
NEXT ASST	USED ON	FINISH	
APPLICATION	DO NOT SCALE DRAWING		

Fisheries & Oceans / Pêches et Océans
 Small Craft Harbours Branch

3.65m WIDE FLOAT MODULE 2005 REVISION

VERSION 2	DWG. NO. FM12-END-201	REV D
SCALE: 1:16	WEIGHT:	SHEET 1 OF 1



LOCATION NOTES

PORT SIMPSON (LAX KW'ALAAMS) SMALL CRAFT HARBOUR FACILITY LOCATED IN THE TOWN OF PORT SIMPSON, ON THE NORTHERN COAST OF THE TSIMPSEAN PENINSULA 32KM NORTH OF PRINCE RUPERT.

LEGEND

- EXISTING STRUCTURES
- FLOATS TO BE REMOVED
- EXISTING STEEL PIPE PILE
- ELECTRICAL TRANSFORMER CABINET
- ELECTRICAL RECEPTACLE CABINET
- MINOR CONTOUR (1.0m)
- MAJOR CONTOUR (5.0m)
- LOW WATER LINE (LWL)
- HIGH WATER LINE (HWL)

GENERAL NOTES

1. NOT AN AS-BUILT DRAWING.
2. CONTRACTOR TO CONFIRM SITE CONDITIONS AND DIMENSIONS.
3. ALL DIMENSIONS ARE IN METRES UNLESS OTHERWISE NOTED.
4. EXISTING STRUCTURES TRACED FROM AERIAL PHOTO AND TRANSFER PLANS.
5. BATHYMETRY REFERENCED FROM HISTORICAL HYDROGRAPHIC SURVEY (2002).

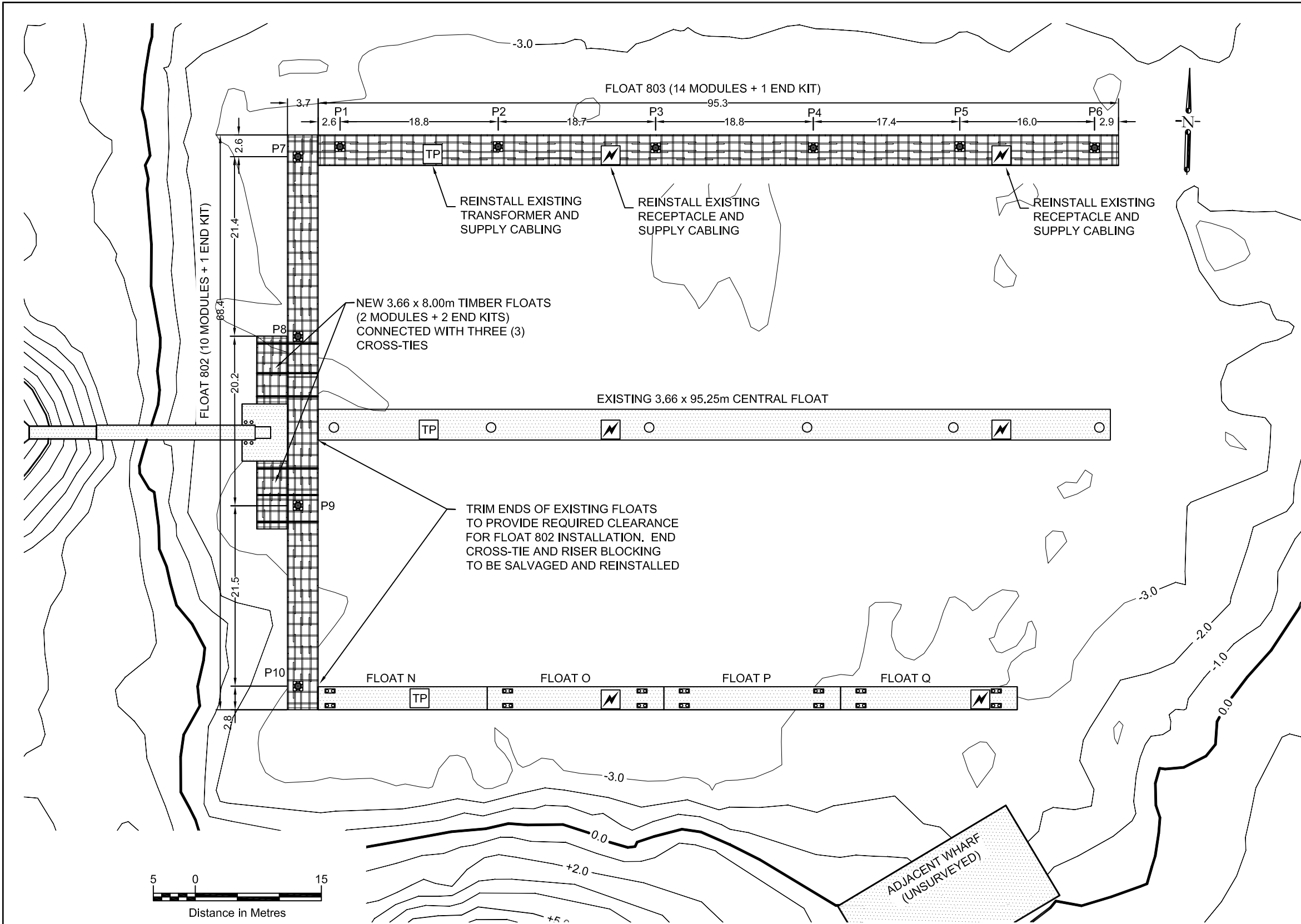
FOR TENDER

Ref. No.	REFERENCE

Fisheries and Oceans / **Pêches et Océans**
 Small Craft Harbours Branch

Checked by	AC
Drawn by	DB
Date	04-JAN-16
Scale	1:750
Inspectors	N/A
Paper	11 x 17

PROJECT	EXISTING FACILITIES AND DEMOLITION HARBOUR REVITALIZATION PORT SIMPSON SMALL CRAFT HARBOUR PORT SIMPSON, B.C.
DWG. No.	4209 -D- 10.4



GENERAL NOTES

1. NOT AN AS-BUILT DRAWING.
2. ALL DIMENSIONS ARE IN METRES.
3. EXISTING STRUCTURES TRACED FROM AERIAL PHOTO AND TRANSFER PLANS.
4. BATHYMETRY REFERENCED FROM HISTORICAL HYDROGRAPHIC SURVEY (2002).
5. FLOAT FLANGE, CROSSTIES AND JOISTS SHOWN FOR REFERENCE AS PER ASSEMBLY OF MODULES OF SCH 3.66m (12') WIDE LIGHT FLOAT '2005 REVISION G'.
6. LOCATIONS AND ELEVATIONS OF EXISTING STRUCTURES AS SHOWN ARE SUBJECT TO CONSTRUCTION VARIATIONS. ALL DIMENSIONS AND DETAILS ARE TO BE VERIFIED BY CONTRACTOR.
7. FENDER/MOORING WELL DETAILS NOT SHOWN.
8. FINAL PILE POSITIONS MAY VARY DEPENDING ON ACTUAL LOCATIONS OF CROSSTIES, JOISTS, OTHER FLOAT COMPONENTS AND DRIVING CONDITIONS.
9. DECKING AND OTHER FLOAT COMPONENTS NOT SHOWN FOR CLARITY.

LEGEND

- EXISTING STRUCTURES
- MINOR CONTOUR (1.0m)
- MAJOR CONTOUR (5.0m)
- LOW WATER LINE (LWL)
- HIGH WATER LINE (HWL)
- EXISTING STEEL PIPE PILE
- P4 762mmØ x 15.9mm STEEL PIPE PILE
- ELECTRICAL TRANSFORMER CABINET
- ELECTRICAL RECEPTACLE CABINET

FOR TENDER



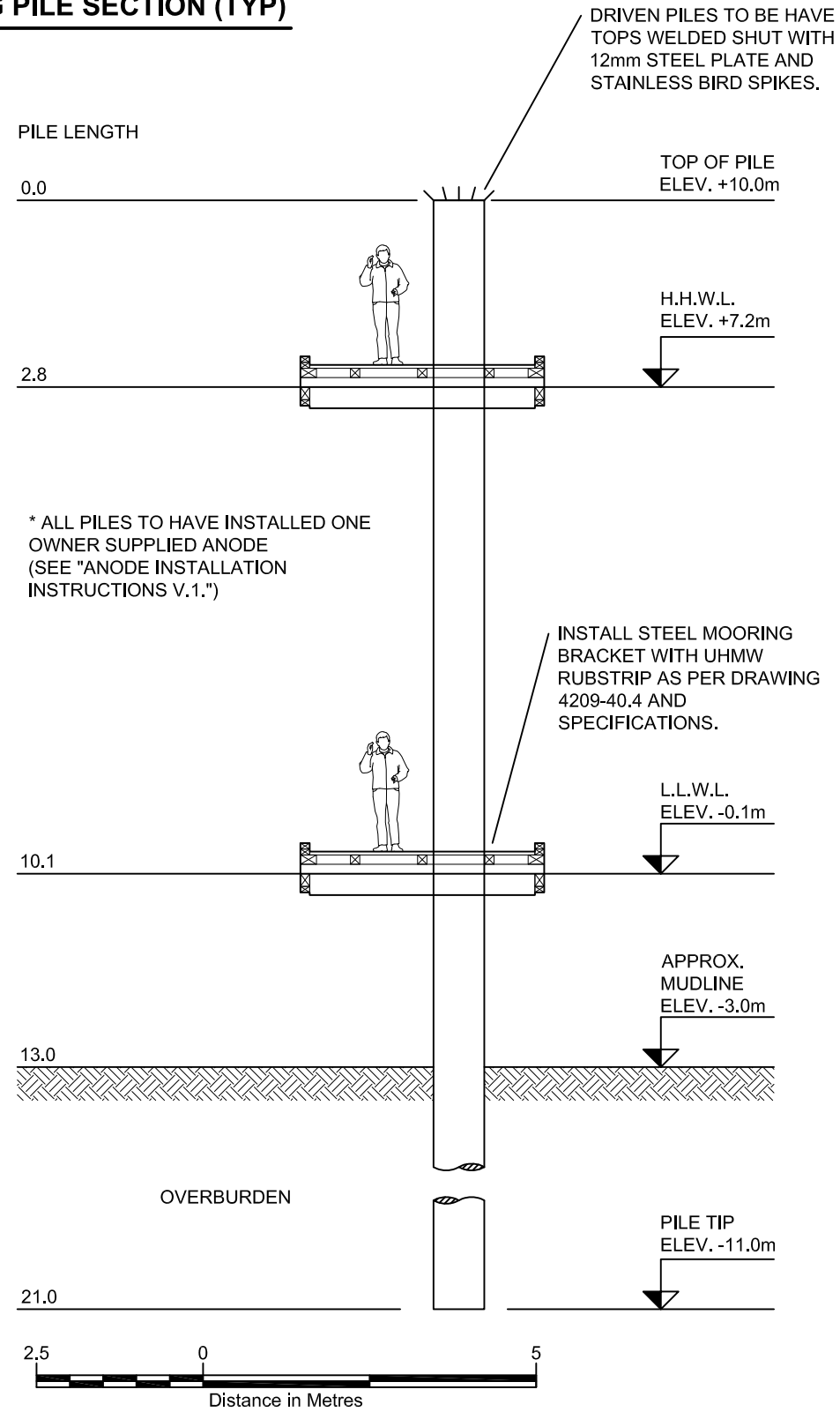
Ref. No.	REFERENCE								

Fisheries and Oceans / **Pêches et Océans**
 Small Craft Harbours Branch

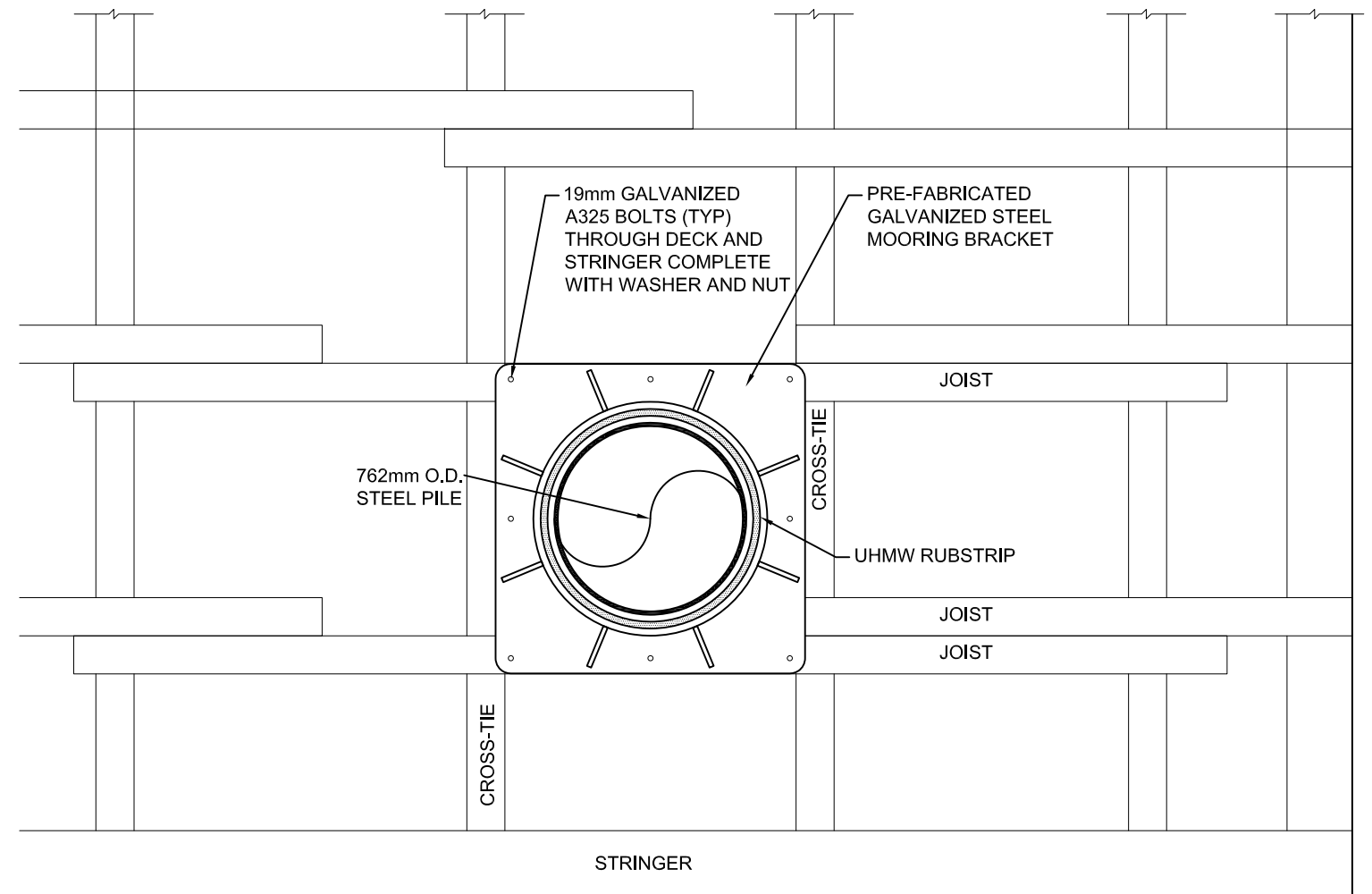
Checked by	AC
Drawn by	DB
Date	04-JAN-16
Scale	1:500
Inspectors	N/A
Paper	11 x 17

PROJECT	FLOAT AND PILE PLAN HARBOUR REVITALIZATION PORT SIMPSON SMALL CRAFT HARBOUR PORT SIMPSON, B.C.
DWG. No.	4209 -D- 20.4

MOORING PILE SECTION (TYP)



DETAIL MOORING WELL (TYP)



DRAWING NOTES

1. NOT AN AS-BUILT DRAWING.
2. ALL DIMENSIONS ARE IN METRES.
3. ELEVATIONS ARE IN METRES CHART DATUM.
4. FINAL PILE POSITIONS MAY VARY DEPENDING ON ACTUAL LOCATIONS OF CROSSTIES, JOISTS, OTHER FLOAT COMPONENTS AND DRIVING CONDITIONS.

FOR TENDER

Ref. No.	REFERENCE

Fisheries and Oceans / Pêches et Océans
 Small Craft Harbours Branch

Checked by	AC
Drawn by	DB
Date	04-JAN-16
Scale	1:100
Inspectors	N/A
Paper	11 x 17

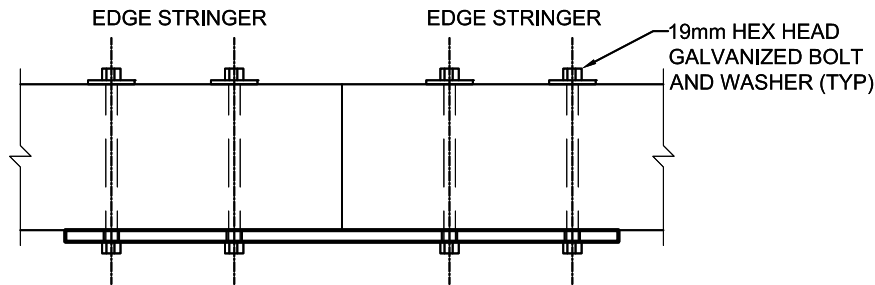
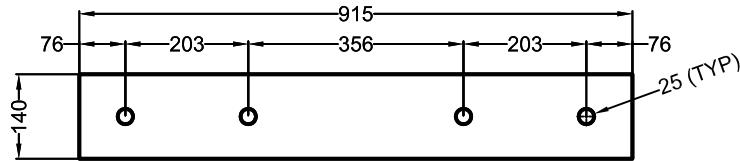
PROJECT	SECTION AND DETAILS HARBOUR REVITALIZATION PORT SIMPSON SMALL CRAFT HARBOUR PORT SIMPSON, B.C.
DWG. No.	



Fisheries and Oceans / Pêches et Océans

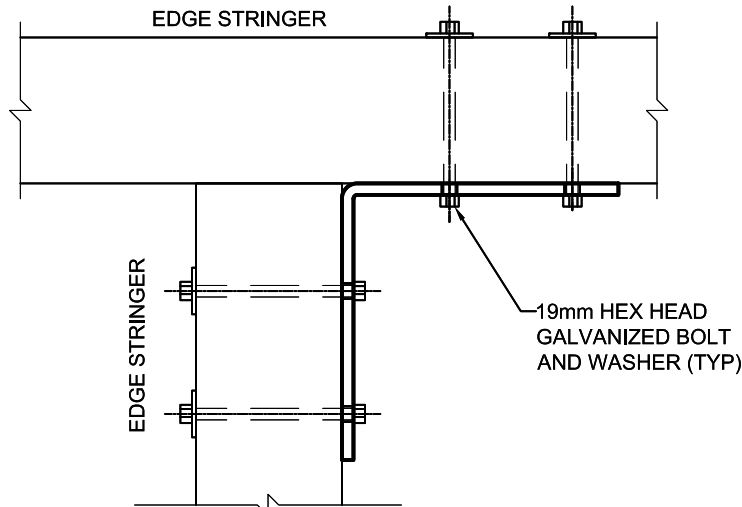
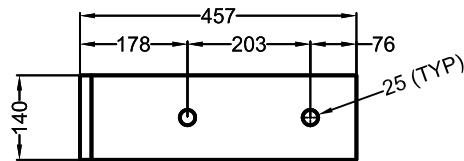
Small Craft Harbours Branch

FLOAT CONNECTOR: STRAIGHT



FLOAT CONNECTOR: ANGLED

**MATERIAL: 19mm STEEL PLATE
COATING: HOT DIPPED GALVANIZED**

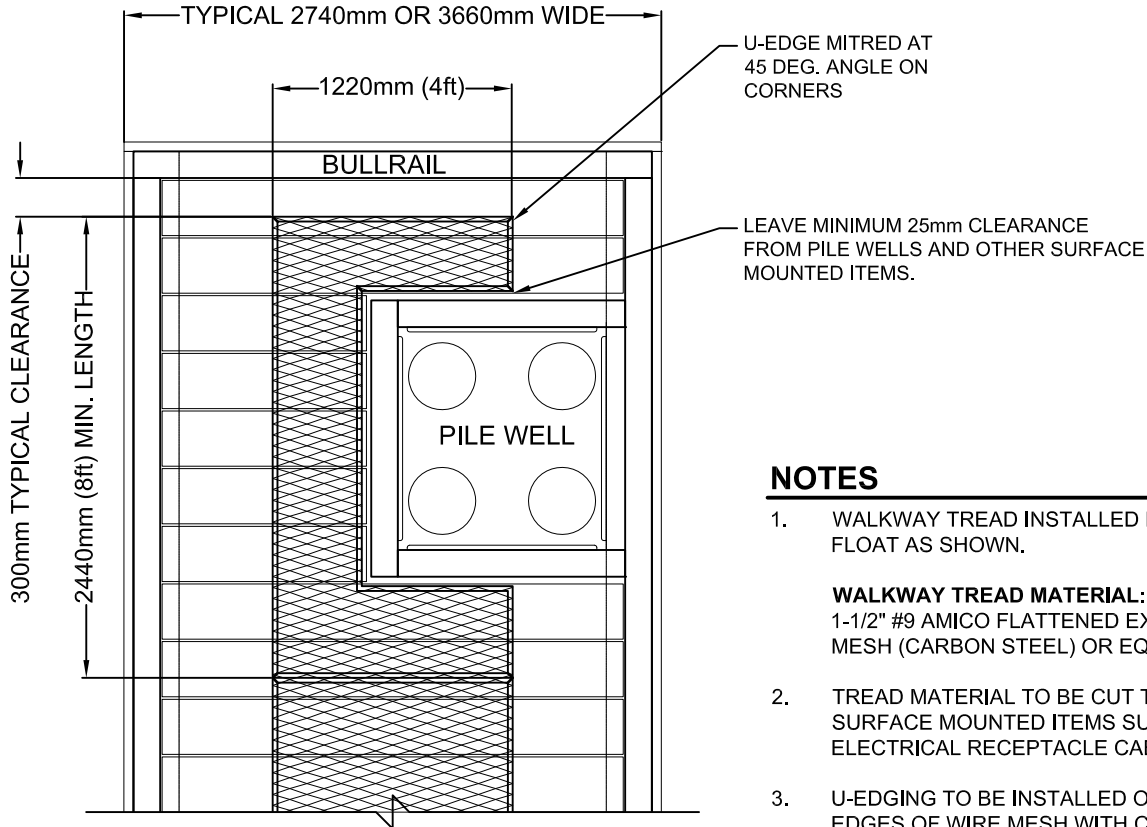


FOR TENDER

		Checked by AC	PROJECT FLOAT CONNECTION DETAILS (TYPICAL) 2.74m AND 3.66m WIDE TIMBER FLOATS SMALL CRAFT HARBOURS PACIFIC REGION
		Drawn by DB	
		Date 04-JAN-16	
		Scale AS SHOWN	
		Inspectors N/A	
Ref. No.	REFERENCE	Paper 8.5 x 11	



PLAN VIEW WALKWAY TREAD LAYOUT (TYPICAL)

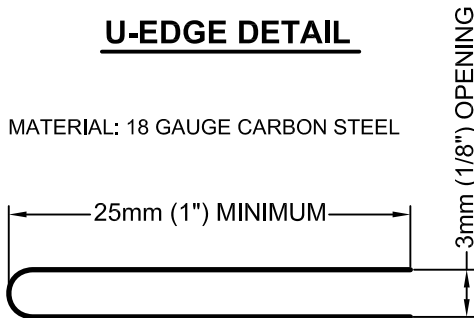


NOTES

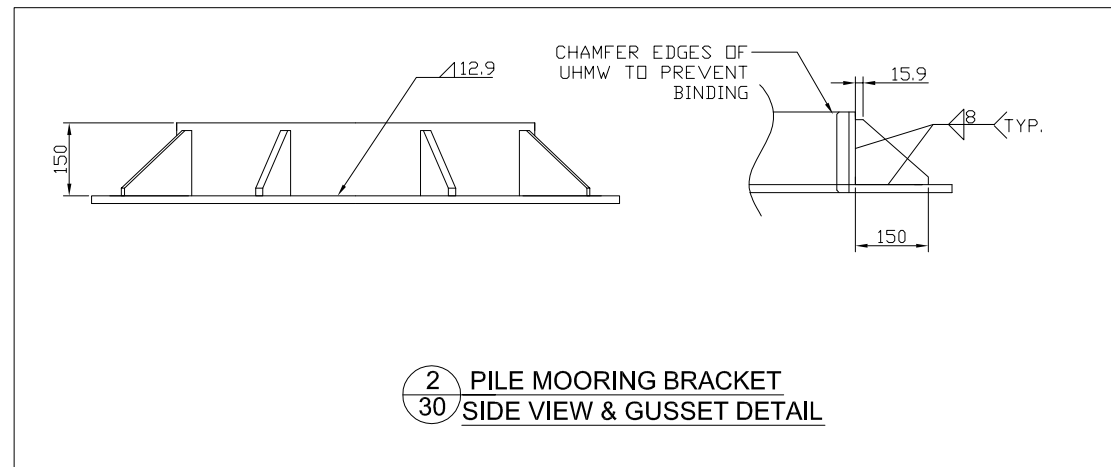
1. WALKWAY TREAD INSTALLED DOWN CENTRE OF FLOAT AS SHOWN.
2. TREAD MATERIAL TO BE CUT TO CONFORM TO SURFACE MOUNTED ITEMS SUCH AS PILE WELLS, ELECTRICAL RECEPTACLE CABINETS, ETC.
3. U-EDGING TO BE INSTALLED OVER ALL EXPOSED EDGES OF WIRE MESH WITH CORNERS MITRED AT 45 DEGREES.
4. U-EDGING TO BE PRE-DRILLED AND FASTENED WITH #14 STAINLESS PAN HEAD WOOD SCREWS, 38mm (1-1/2" LONG).
5. FASTENERS TO HAVE A MAXIMUM SPACING OF 500mm WITH TWO (2) CONNECTION POINTS AT EACH CORNER

U-EDGE DETAIL

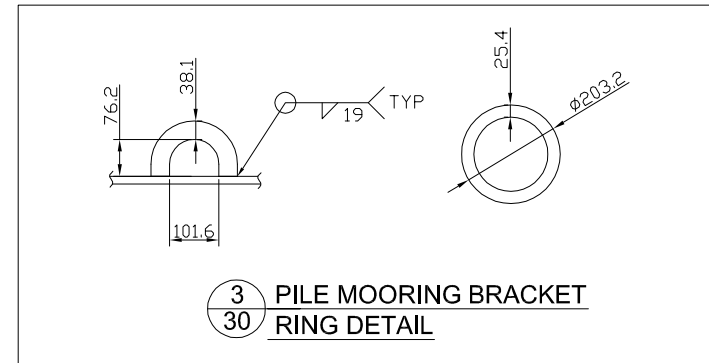
MATERIAL: 18 GAUGE CARBON STEEL



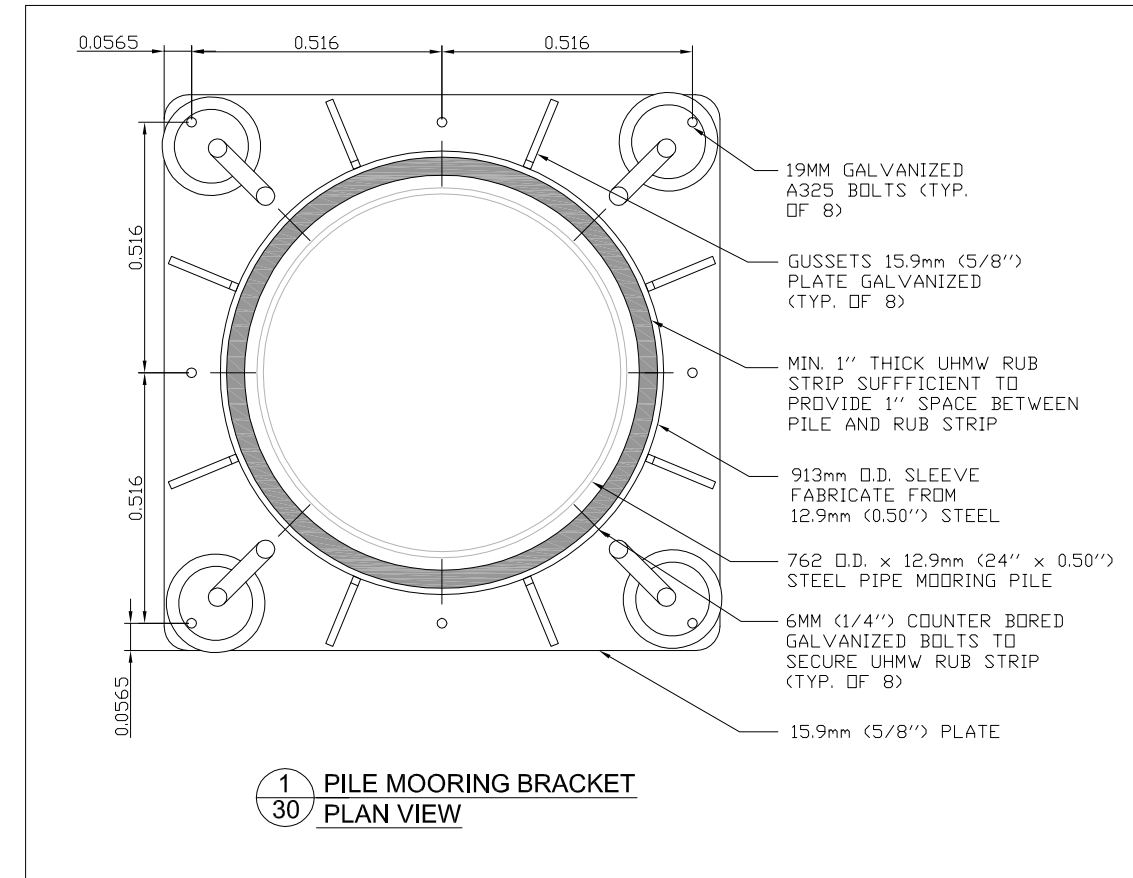
		Checked by AC	PROJECT WALKWAY TREAD TYPICAL DETAIL 2.74m (9ft) AND 3.66m (12ft) WIDE TIMBER FLOATS SMALL CRAFT HARBOURS PACIFIC REGION, BRITISH COLUMBIA
		Drawn by DB	
		Date 04-JAN-16	
		Scale 1:40	
		Inspectors N/A	
Ref. No.	REFERENCE	Paper 8.5 x 11	DWG. No. 4900 -D- 01 .4



2 PILE MOORING BRACKET
30 SIDE VIEW & GUSSET DETAIL



3 PILE MOORING BRACKET
30 RING DETAIL



1 PILE MOORING BRACKET
30 PLAN VIEW

NOTES:

- ASSEMBLY IS TO BE A36 STEEL GALVANIZED TO 2 OZ/FT² UNLESS OTHERWISE NOTED.
- 6"X1" RUB STRIPS TO BE HEAT MOLDED TO INSIDE OF PIPE AND ATTACHED WITH SCREWS THROUGH COUNTER SUNK ³/₈" HOLES
- Ø 8" WELDED RING MADE FROM Ø1" STEEL ROD TO BE PLACED INSIDE MOORING HOOP.
- CHAMFER UHMW RUB STRIP AT TOP AND BOTTOM EDGES AT PILE-RUB STRIP INTERFACE.



FISHERIES AND OCEANS CANADA
SMALL CRAFT HARBOURS BRANCH

PORT SIMPSON HARBOUR REPAIRS
MOORING BRACKET DETAIL
SCH. - LSFW RETENSIONING 2012-2013

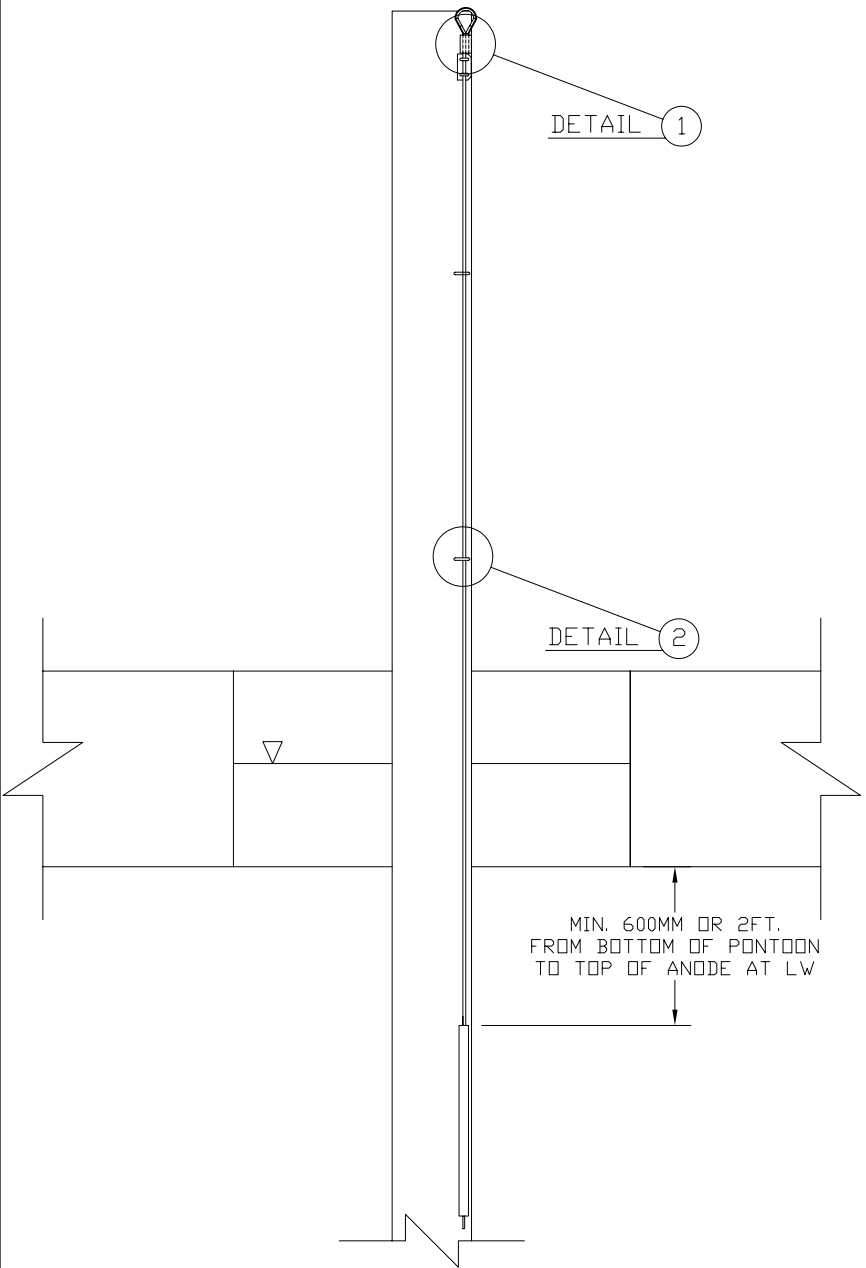
SCALE
NTS

DATE
OCTOBER 18, 2012

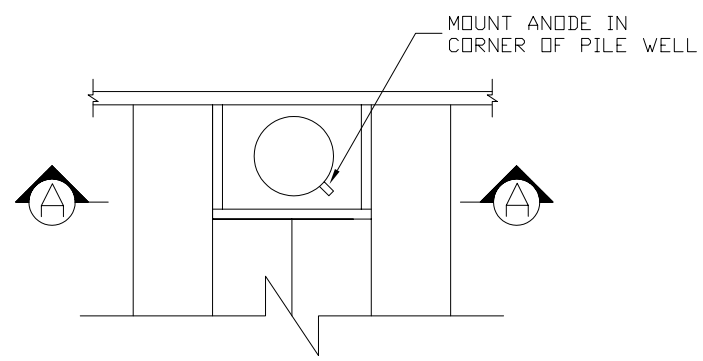
DRAWING NUMBER
717891-30

REVISION 1

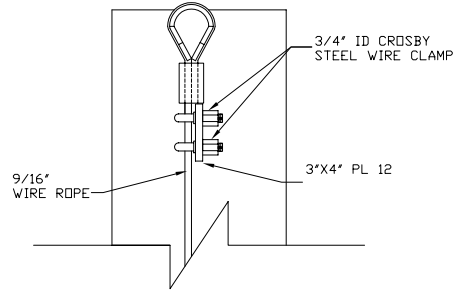
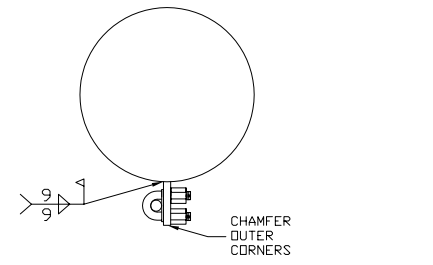
Ref. No.	REFERENCE
	ISSUED FOR TENDER OCTOBER 23, 2012



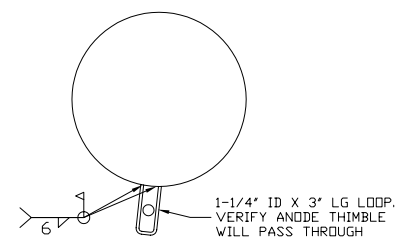
ELEVATION VIEW



PLAN VIEW




DETAIL 1



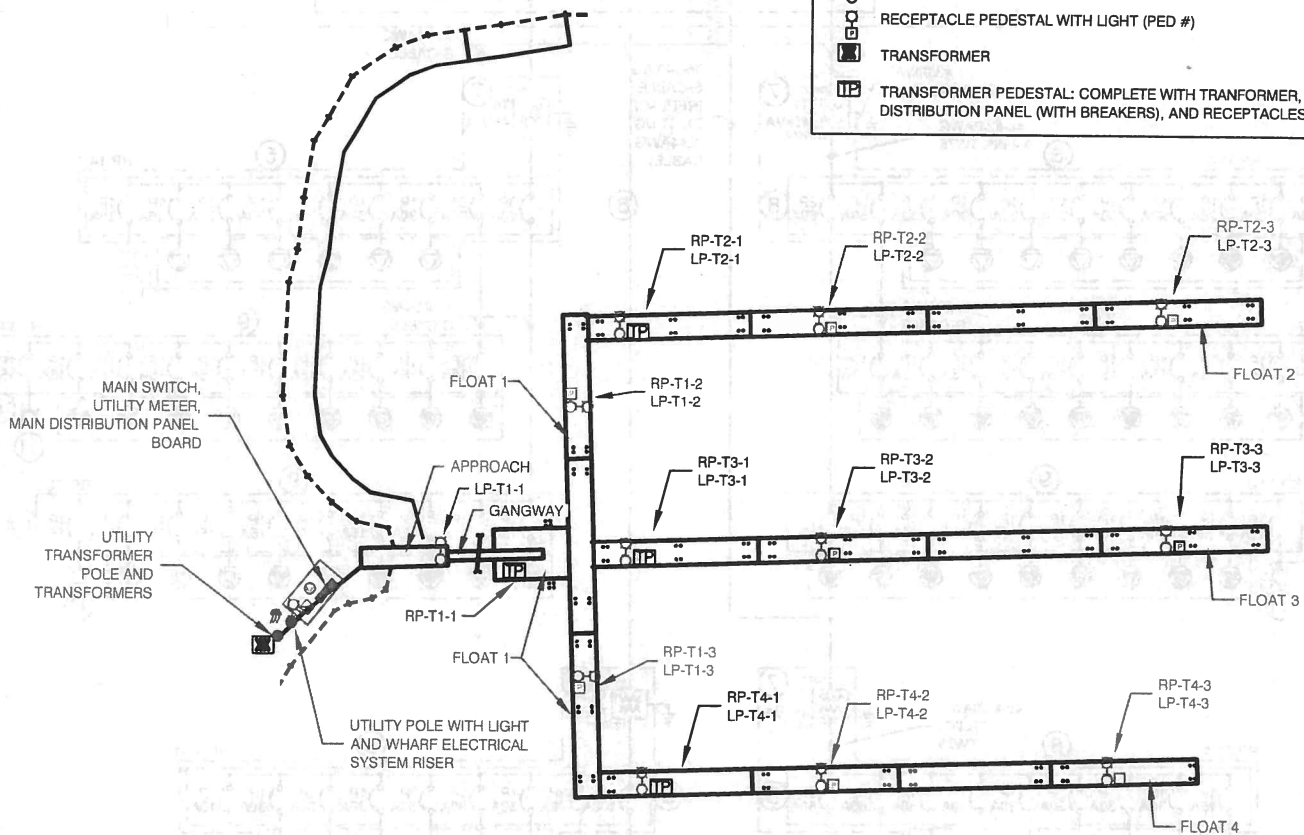
DETAIL 2



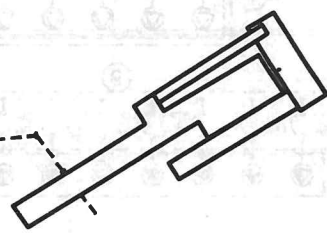
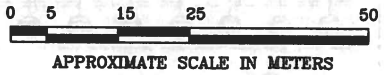
 <p>Fisheries and Oceans Pêches et Océans</p> <p>Small Craft Harbours Branch</p>	Tel: (604) 666-2226 Fax: (604) 666-7056 MORGAN.MEENTS@DFO-MPO.GC.CA		
	Title: ANODE INSTALLATION INSTRUCTIONS		
	Scale: Not to Scale	Checked By:	Drawn By: MM
	Drawn: MAY 23, 2008	Drawing No.: -	



ELECTRICAL LEGEND	
	UTILITY METER
	OVERHEAD CONNECTION TO WOODEN POLE
	SERVICE MAIN SWITCH (MS)
	JUNCTION BOX (JB #)
	RECEPTACLE PEDESTAL (RP #); COMPLETE WITH INTERNAL RECEPTACLES AND BREAKERS
	DISTRIBUTION PANELBOARD (DP)
	LIGHT ON WOODEN POLE (LP #)
	LIGHT ON METAL POLE (LP #)
	RECEPTACLE PEDESTAL WITH LIGHT (PED #)
	TRANSFORMER
	TRANSFORMER PEDESTAL: COMPLETE WITH TRANSFORMER, DISTRIBUTION PANEL (WITH BREAKERS), AND RECEPTACLES



1 SITE LAYOUT - ELECTRICAL
E1



- NOTES:
- EXISTING EQUIPMENT SHOWN IN GRAYSCALE, NEW WORK SHOWN DARK.
 - REMOVE EXISTING CABLING FROM PEDESTAL T1-1 TO FORMER HARBOUR OFFICE TRAILER.
 - DRAWING IS BASED ON PREVIOUS DRAWING PREPARED FOR PUBLIC WORKS CANADA BY EMCO ENGINEERING IN DECEMBER 2007. WHERE EXACT INFORMATION IS REQUIRED, THE READER SHOULD SURVEY THE EXACT SITE CONDITIONS.

Public Works Canada / Travaux publics Canada
Pacific Western Region
Fisheries and Oceans
Small Craft Harbors

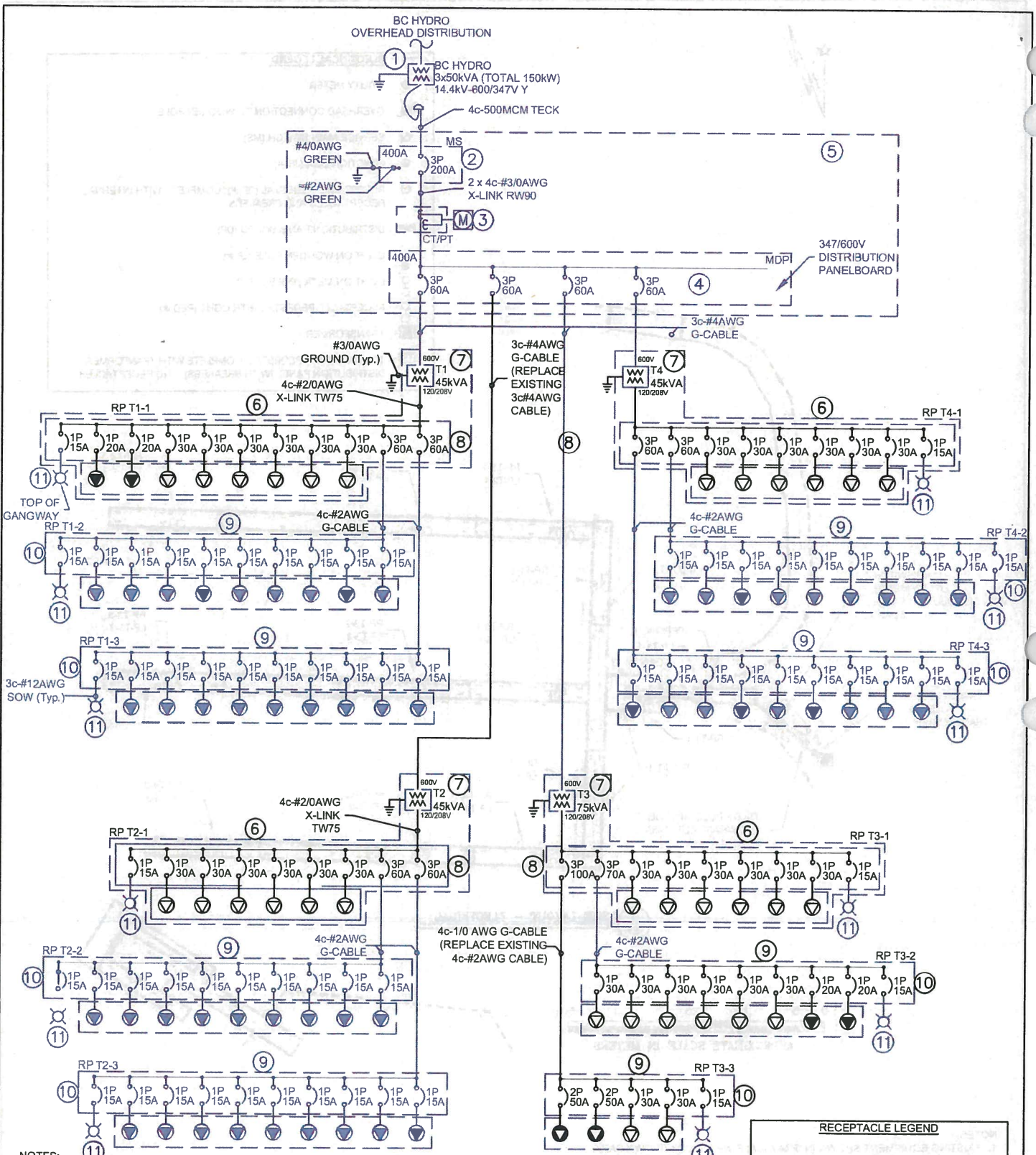
EMPAC
ENGINEERING LTD.

439 EYLES ROAD, DYAMA, B.C. V4V 2A7
PHONE: (250) 548-1151 FAX: (250) 548-4152
WEBSITE: www.empac.ca

Project #: 2000001550

Rev	Date	Drn	Chk	Description
2	May 14/13	KS		Record Drawing
1	Feb 1/13	KS	GMc	Issued for Construction
0	Jan30/13	KS	GMc	Issued for Approval

PORT SIMPSON HARBOUR
ELECTRICAL UPGRADE
SITE LAYOUT - ELECTRICAL



NOTES:
 1. EXISTING EQUIPMENT SHOWN IN GRAYSCALE, NEW WORK SHOWN DARK.
 2. DRAWING IS BASED ON PREVIOUS DRAWING PREPARED FOR PUBLIC WORKS CANADA BY EMCO ENGINEERING IN DECEMBER 2007. WHERE EXACT INFORMATION IS REQUIRED, THE READER SHOULD SURVEY THE EXACT SITE CONDITIONS.

RECEPTACLE LEGEND	
	20A, 125V TWIST-LOCK RECEPTACLE
	30A, 125V TWIST-LOCK RECEPTACLE
	50A, 125/250V TWIST-LOCK RECEPTACLE

Public Works Travaux publics
 Canada Canada
 Pacific Western Region
 Fisheries and Oceans
 Small Craft Harbors

EMPAC
 ENGINEERING LTD.
 4391 EYLES ROAD, OYAMA, BC, V4V 2A7
 PHONE: (250) 548-4151 FAX: (250) 548-4152
 WEBSITE: www.empac.ca
 Project #: 2000001550

Rev	Date	Drn	Chk	Description
2	May 14/13	KS		Record Drawing
1	Feb 1/13	KS	GMc	Issued for Construction
0	Jan 30/13	KS	GMc	Issued for Approval

PORT SIMPSON HARBOUR
ELECTRICAL UPGRADE
SINGLE LINE DIAGRAM
 Drawing PAGE E2 OF 3 Rev. 2

PANEL MDP - 24 CIRCUIT, 400A BUS, 347/600V, 3 φ, 4W: CODE DEMAND LOAD ≈ 99kW							
LOAD DESCRIPTION	≈ DEMAND LOAD	POLES/AMPS	POSITION	POSITION	POLES/AMPS	≈ DEMAND LOAD	LOAD DESCRIPTION
TRANSFORMER 1	39kW	3p/60A	1	2	3p/60A	39kW	TRANSFORMER 2
			3	4			
			5	6			
			7	8			
TRANSFORMER 3	60kW	3p/60A	9	10	3p/60A	39kW	TRANSFORMER 4
			11	12			
			13	14			
			15	16			
			17	18			
			19	20			
			21	22			
			23	24			

1
E3 PANEL 'DP1' SCHEDULE

NTS
NOTES:
1. ≈ DEMAND LOAD INDICATED, IS THE CODE CALCULATED VALUE BASED ON FOUND EQUIPMENT.

EQUIPMENT LIST					
EQUIPMENT	QUANTITY	DESCRIPTION	GENERAL INFORMATION	MANUFACTURER, PART NUMBER AND RATING	COMMENTS
①	1	BC HYDRO 3φ DISTRIBUTION TRANSFORMER BANK	POLE MOUNT, 14.4kV Δ - 600/347V Y, 3 x 50kVA (150kVA)	BC HYDRO EQUIPMENT	
②	1	MAIN SERVICE DISCONNECT AND CUSTOMER SERVICE OVERCURRENT PROTECTION	200A 3 POLE BREAKER IN 250A FRAME, ENCLOSURE 400A/600VAC	FPE HORIZON 200A TRIP, 250A FRAME, IN BJ4400S STEEL ENCLOSURE	EQUIPMENT APPEARS TO BE SUITABLE, AS IS, FOR CONTINUED USE. SERVICE ENTRANCE GROUNDING WITHIN SWITCH IS INCORRECTLY CONNECTED - NEUTRAL POINT IS REQUIRED TO BE DIRECTLY CONNECTED TO THE GROUND CONDUCTOR
③	1	BC HYDRO CURRENT AND POTENTIAL TRANSFORMERS, DEMAND AND CONSUMPTION METERING	ELECTRONIC CONSUMPTION AND DEMAND METER	METER NUMBER: 2741841 F315	
④	1	DISTRIBUTION PANEL BOARD	400A, 600VAC, 3φ, 3-4W	PANEL BOARD: FPE NHDP424-46MST TYPICAL 60A BREAKER: HORIZON CE3060E, 600V, 18KA	
⑤	1	DISTRIBUTION PEDESTAL WITH OPEN BOTTOM	FREE STANDING WEATHER RESISTANT ALUMINUM ENCLOSURE. 72" x 66" x 16"	NOT INDICATED ON ENCLOSURE	ENCLOSURE IS IN GOOD CONDITION. 3 CONCRETE FILLED BOLLARDS ARE LOCATED BETWEEN THE ROADWAY APPROACH AND THE ENCLOSURE.
⑥	4	TRANSFORMER PEDESTAL WITH DISTRIBUTION AND RECEPTACLES	FREE STANDING, WEATHER RESISTANT ALUMINUM ENCLOSURE	TO SMALL CRAFT HARBOURS STANDARDS	REPLACE EXISTING TRANSFORMERS AND ADJACENT RECEPTACLE PEDESTALS WITH NEW EQUIPMENT
⑦	4	MARINE DUTY DISTRIBUTION TRANSFORMER	600V Δ - 208/120V Y	T1, T2, T4: 45KVA T3: 75KVA	INSTALL IN ITEM 6, TRANSFORMER PEDESTAL
⑧	4	DISTRIBUTION PANEL BOARD	225A, 240VAC, 3φ, 4W		INSTALL IN ITEM 6 TRANSFORMER PEDESTALS. INCLUDE CIRCUIT BREAKERS AS SHOWN ON SINGLE LINE DRAWING.
⑨	2	RECEPTACLE PEDESTALS	FREE STANDING WEATHER RESISTANT ALUMINUM ENCLOSURE	TO SMALL CRAFT HARBOURS STANDARDS. INCLUDES DISTRIBUTION PANEL, CIRCUIT BREAKERS, AND RECEPTACLES	REPLACE EXISTING RECEPTACLE PEDESTALS T3-2 AND T3-3
⑩	2	RECEPTACLE PEDESTAL PANEL BOARD	100A, 240VAC, 3φ, 4W		INSTALL IN ITEM 9 RECEPTACLE PEDESTALS. INCLUDE CIRCUIT BREAKERS AS SHOWN ON SINGLE LINE DRAWING
⑪	12	POLE TOP MOUNT LIGHT	LOW PRESSURE SODIUM WITH INTEGRAL PHOTOCCELL	PHILLIPS	
⑫	108	RECEPTACLE INSIDE THE RECEPTACLE PEDESTALS	TWIST LOCK, RATINGS AS SHOWN	L5-20R, L5-30R, AND SS2-50R AS REQUIRED	REPLACE EXISTING RECEPTACLES AS REQUIRED. INCLUDE NEW RECEPTACLES IN NEW TRANSFORMER PEDESTALS

NOTES:
1. EXISTING EQUIPMENT SHOWN IN GRAYSSCALE, NEW WORK SHOWN DARK.
2. DRAWING IS BASED ON PREVIOUS DRAWING PREPARED FOR PUBLIC WORKS CANADA BY EMCO ENGINEERING IN DECEMBER 2007. WHERE EXACT INFORMATION IS REQUIRED, THE READER SHOULD SURVEY THE EXACT SITE CONDITIONS.

2
E3 ELECTRICAL EQUIPMENT LIST

Public Works Travaux publics Canada Pacific Western Region	EMPAC ENGINEERING LTD. 4381 EYLES ROAD, OYAMA, B.C. V4V 2A7 PHONE: (250) 548-4151 FAX: (250) 548-4152 WEBSITE: www.empac.ca Project #: 2000001550	2	May 14/13	KS		Record Drawing	PORT SIMPSON HARBOUR ELECTRICAL UPGRADE ELECT. EQUIPMENT LIST
		1	Feb 1/13	KS	GMc	Issued for Construction	
0	Jan30/13	KS	GMc	Issued for Approval			
Rev	Date	Drn	Chk	Description	Drawing		
Fisheries and Oceans Small Craft Harbors						PAGE E3 OF 3	Rev. 2