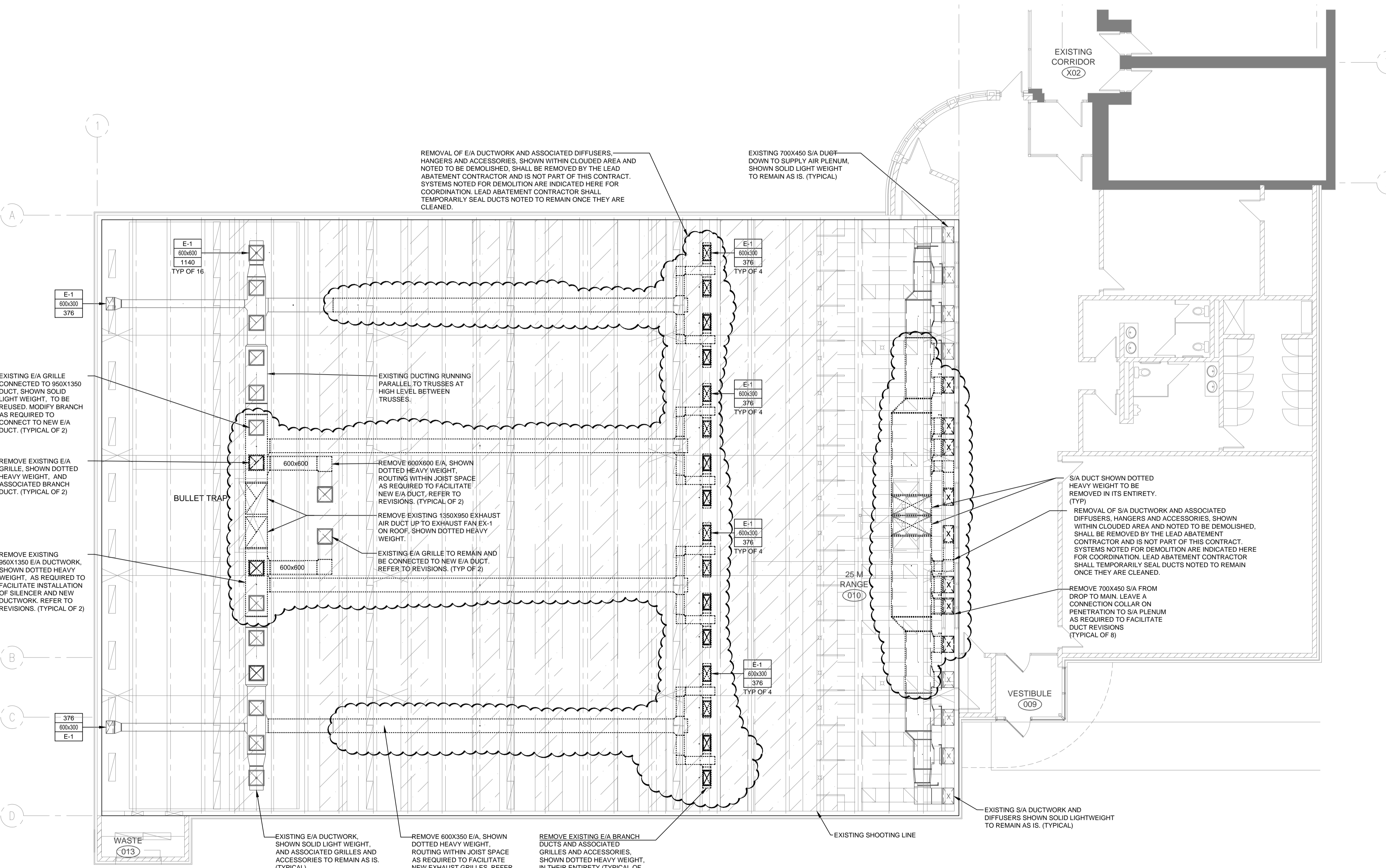


VENTILATION GENERAL NOTES

- ALL DUCTWORK SHOWN DOUBLE LINE INSIDE PERIMETER OF DUCT IS TO BE COMPLETE WITH 25mm INTERNAL INSULATION. ALL OTHER DUCTWORK IS TO BE C/W 25mm EXTERNAL INSULATION. SIZES INCLUDE INTERNAL INSULATION WHERE APPLICABLE.
- ALL FITTINGS ON INTERNALLY INSULATED DUCTWORK ARE TO BE C/W INTERNAL INSULATION. ALL OTHERS ARE TO BE EXTERNALLY INSULATED.
- ALL SUPPLY AIR AND EXHAUST AIR BRANCH DUCTS TO GRILLES AND DIFFUSERS ARE TO BE C/W BALANCE DAMPERS IN BRANCH DUCT NEAR MAIN, UNLESS BALANCE DAMPERS ARE PROVIDED IN GRILLE OR DIFFUSER.
- ALL EXHAUST FANS ARE TO BE SUSPENDED FROM STRUCTURE ON THREADED ROD C/W SPRING ISOLATORS.
- PROVIDE TURNING VANES IN ELBOWS
- PROVIDE ACCESS DOORS FOR ACCESS TO ALL MOTORIZED DAMPERS, FIRE DAMPERS, HUMIDIFIERS AND CONTROL DEVICES, AND TO FACILITATE DUCT CLEANING.
- COORDINATE ALL WORK WITH OTHER TRADES.
- RUN DUCTS AS HIGH AS POSSIBLE TO PROVIDE MAXIMUM CLEARANCE.



Association of Professional Engineers & Geoscientists of Saskatchewan
CERTIFICATE OF AUTHORIZATION
HDA ENGINEERING LTD.
 Number C361
 Permission to Consult Held by:
 Discipline: Mech. Sk. Reg. No. 6093 Signature: *J. Downer*

DO NOT SCALE DRAWINGS

Revision/Revision Client/client	Description/Description	Date/Date
0	ISSUED FOR TENDER	2016-01-12

Project title/Titre du projet

**25B RANGE RENOVATION
 REGINA, SK**

Approved by/Approuve par

Designed by/Concept par
 TKC

Drawn by/Dessine par
 TKC

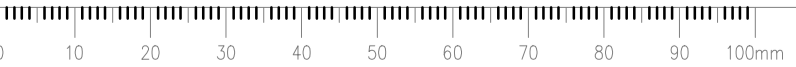
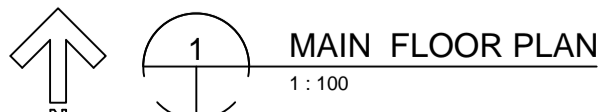
RCMP Project Manager/Administrateur de Projets GRC
 JD

RCMP, Architectural and Engineering Resources Manager/
 Ressources Architectural et de Directeur d'Ingénierie, GRC

Client/client

Drawing title/Titre du dessin
VENTILATION DEMOLITION

Project No./No. du projet	Sheet/Fauille	Revision no./Lo Révision no.
23/2015	M1.1 OF -	0



VENTILATION GENERAL NOTES

- ALL DUCTWORK SHOWN DOUBLE LINE INSIDE PERIMETER OF DUCT IS TO BE COMPLETE WITH 25mm INTERNAL INSULATION. ALL OTHER DUCTWORK IS TO BE C/W 25mm EXTERNAL INSULATION. SIZES INCLUDE INTERNAL INSULATION WHERE APPLICABLE.
- ALL FITTINGS ON INTERNALLY INSULATED DUCTWORK ARE TO BE C/W INTERNAL INSULATION. ALL OTHERS ARE TO BE EXTERNALLY INSULATED.
- ALL SUPPLY AIR AND EXHAUST AIR BRANCH DUCTS TO GRILLES AND DIFFUSERS ARE TO BE C/W BALANCE DAMPERS IN BRANCH DUCT NEAR MAIN, UNLESS BALANCE DAMPERS ARE PROVIDED IN GRILLE OR DIFFUSER.
- ALL EXHAUST FANS ARE TO BE SUSPENDED FROM STRUCTURE ON THREADED ROD C/W SPRING ISOLATORS.
- PROVIDE TURNING VANES IN ELBOWS
- PROVIDE ACCESS DOORS FOR ACCESS TO ALL MOTORIZED DAMPERS, FIRE DAMPERS, HUMIDIFIERS AND CONTROL DEVICES, AND TO FACILITATE DUCT CLEANING.
- COORDINATE ALL WORK WITH OTHER TRADES.
- RUN DUCTS AS HIGH AS POSSIBLE TO PROVIDE MAXIMUM CLEARANCE.

DIFFUSERS AND GRILLES:

E-1: Existing exhaust grille, rebalance in accordance with balancing requirements.

E-2: E.H. Price, Model 80/TB/B12, eggcrate face return, t-bar lay-in or complete with plaster frame for gypsum ceiling, white powder coat finish. Unit to have integral balancing damper when installed in gypsum ceiling.

AIR BALANCE

- PROVIDE REPORT ON EXISTING MUA-1 AND EF-1 PERFORMANCE INCLUDING REVIEW OF BUILDING PRESSURE DURING OPERATION PRIOR TO COMMENCING WORK. REPORT TO INCLUDE ESTIMATE ON LEAKAGE OF EXISTING DUCTWORK. REFER TO SPECIFICATIONS.
- UPON COMPLETION OF WORK REBALANCE SUPPLY AIR AND EXHAUST AIR TO TOTAL AIRFLOWS INDICATED.
- ALLOW FOR RESHIEVING EXISTING FANS TO MEET AIRFLOW REQUIREMENTS.
- PROVIDE COMPLETE REPORT ON MUA-1 AND EF-1 POST CONSTRUCTION OPERATION INCLUDING REVIEW OF BUILDING PRESSURE DURING OPERATION. REFER TO SPECIFICATIONS. BALANCE EXHAUST TO ENSURE FIRING RANGE VELOCITIES AS INDICATED IN SPECIFICATIONS WHILE MAINTAINING TOTAL EXHAUST SYSTEM FLOW AND PRESSURE BALANCE.

Silencer Schedule																				
Tag	Location	Unit Served	General Information		Silencer Type	Silencer Leg A mm	Silencer Leg B mm	Airflow			Minimum Required Attenuation									
			Silencer Cross Section mm	Duct Connection mm				L/S	(CFM)	Face Velocity m/s	Pressure Drop Pa	in. w.c.	Octave Band							
SIL-1	Supply Air Duct	MUA-1	1750x850	1750x850	Elbow - Rect	1000	2550	12036	(25516)	8	51	0.20	11	18	19	31	38	32	23	22
SIL-2	Supply Air Duct	MUA-1	1750x850	1750x850	Elbow - Rect	1000	2550	12036	(25516)	8	51	0.20	11	18	19	31	38	32	23	22
SIL-3	Exhaust Air Duct	EF-1	950x1350	950x1350	Elbow - Rect	2600	2600	12508	(26517)	9	35	0.14	10	26	23	40	55	42	25	21
SIL-4	Exhaust Air Duct	EF-1	950x1350	950x1350	Elbow - Rect	2600	2600	12508	(26517)	9	35	0.14	10	26	23	40	55	42	25	21

Pressure Drop listed includes system effect for duct arrangements indicated on drawings. Supplier to ensure Pressure Drop including system effect is not greater than number indicated.

SEP Architecture Inc.
 101-3725 Paskas Street, Regina, SK S4S 0R8 PH: (306) 585-2225
 102-3718 Kinross Place, Saskatoon, SK S7P 0A6 PH: (306) 655-4657
 www.sep.ca

HDA ENGINEERING LTD.
 Mechanical Engineering Consultants
 1580 Angus Street, Regina, Saskatchewan S4L 1Z1
 P: 306-525-9815 F: 306-525-0369 E: hda@hdaeng.com



Association of Professional Engineers & Geoscientists of Saskatchewan
CERTIFICATE OF AUTHORIZATION
HDA ENGINEERING LTD.
 Number C981
 E. M. COOKE
 Member 11372
 Discipline: Mech. Sk. Reg. No. 6093 Signature: J. Downer

DO NOT SCALE DRAWINGS

Revision/Revision	Description/Description	Date/Date
0	ISSUED FOR TENDER	2016-01-12

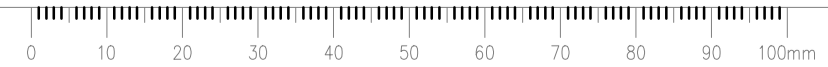
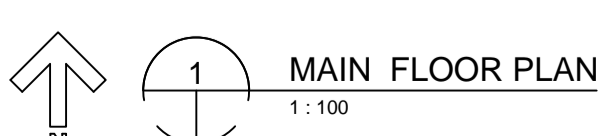
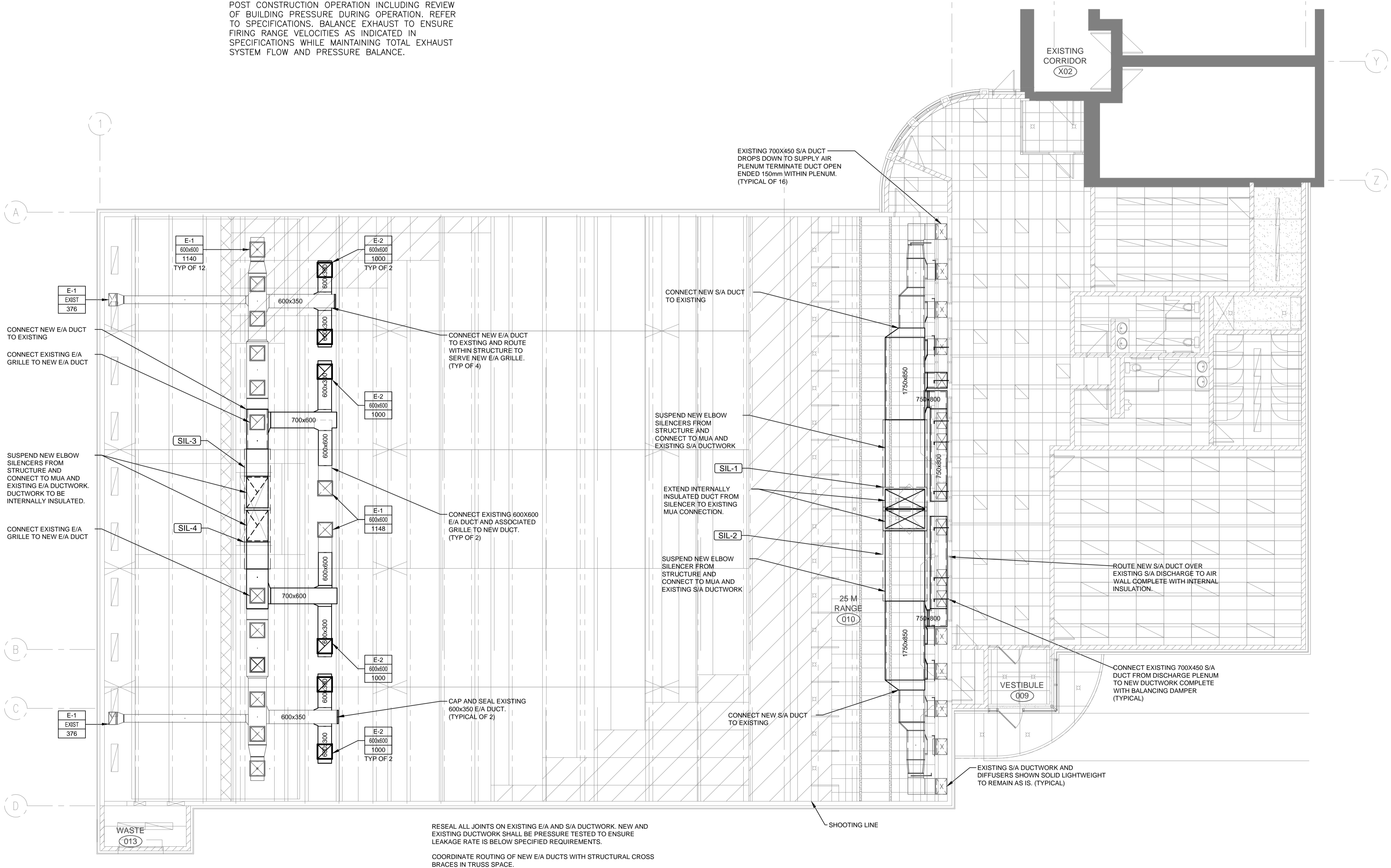
Project title/Titre du projet

**25B RANGE RENOVATION
REGINA, SK**

Approved by/Approve par
 Designed by/Concept par
 TKC
 Drawn by/Dessine par
 TKC
 RCMP Project Manager/Administrateur de Projets GRC
 JD
 RCMP, Architectural and Engineering Resources Manager/
 Ressources Architectural et de Directeur d'Ingénierie, GRC

Client/client
 Drawing title/Titre du dessin
**VENTILATION REVISIONS,
EQUIPMENT SCHEDULES**

Project No./No. du projet 23/2015	Sheet/Fauille M1.2 OF -	Revision no./ La Révision no. 0
---	--------------------------------------	--





Association of Professional Engineers & Geoscientists of Saskatchewan
CERTIFICATE OF AUTHORIZATION
HDA ENGINEERING LTD.
 Number C361
 Permission to Consult Held by:
 Discipline Sk. Reg. No. Signature
 Mech. 6093 *J. D...*

DO NOT SCALE DRAWINGS

Revision/Revision	Description/Description	Date/Date
0	ISSUED FOR TENDER	2016-01-12

Project title/Titre du projet

**25B RANGE RENOVATION
 REGINA, SK**

Approved by/Approuve par

Designed by/Concept par
 TKC

Drawn by/Dessine par
 TKC

RCMP Project Manager/Administrateur de Projets GRC
 JD

RCMP, Architectural and Engineering Resources Manager/
 Ressources Architectural et de Directeur d'Ingénierie, GRC

Client/client

Drawing title/Titre du dessin

FIRE PROTECTION DEMOLITION

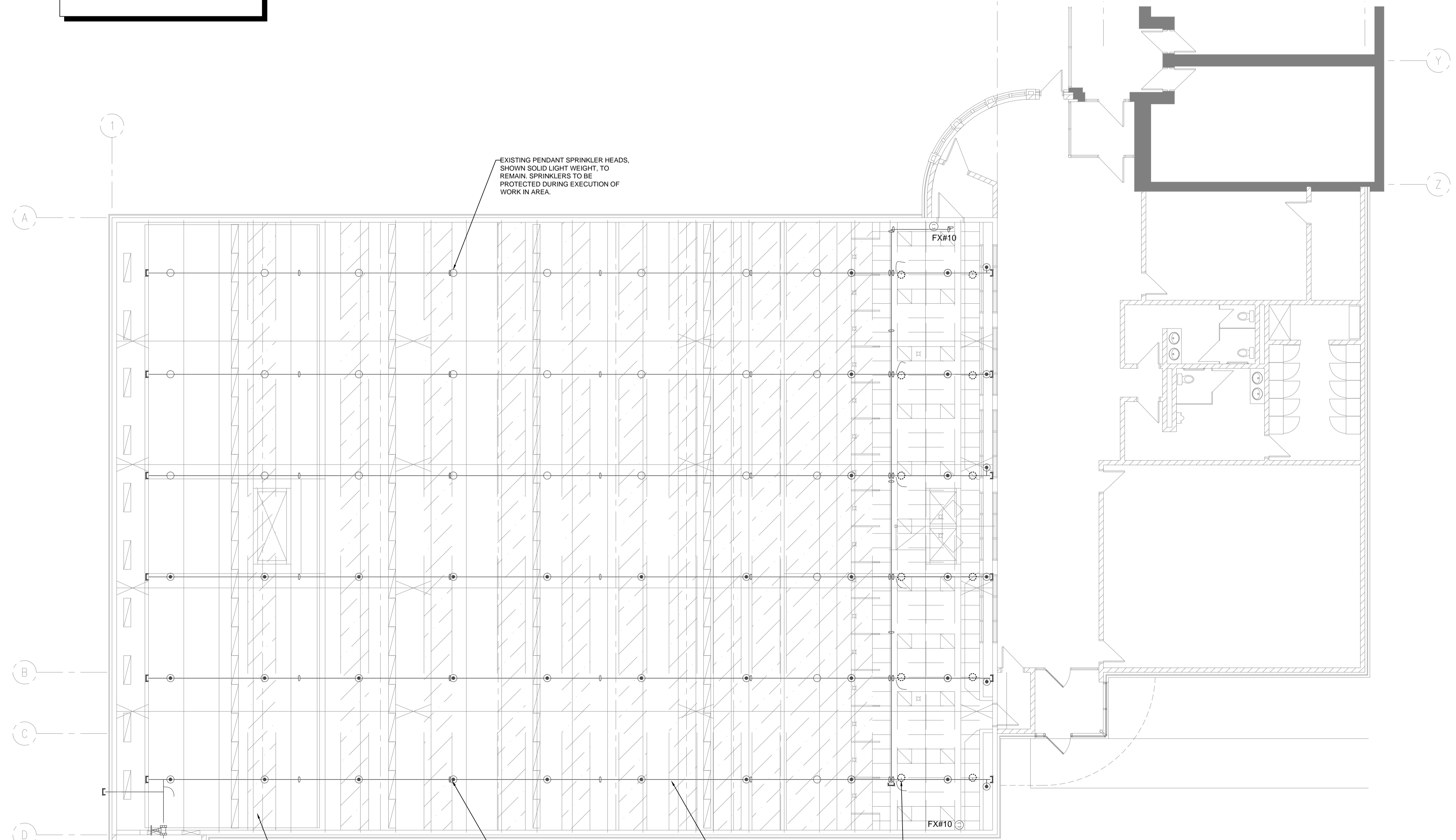
Project No./No. du projet	Sheet/Feuille	Revision no./Lo Révision no.
23/2015	M2.1 OF -	0

LEGEND

- TYPE 'A' - CHROME SEMIRECESSED PENDANT
- ⊙ TYPE 'B' - UPRIGHT BRONZE
- ▽ TYPE 'C' - CHROME SIDEWALL
- ⊖ TYPE 'D' - CONCEALED PENDANT
- SPRINKLER HEADS TO REMAIN SHOWN SOLID LIGHT WEIGHT
- ⊖ SPRINKLERS TO BE REMOVED/REPLACED SHOWN DOTTED HEAVY WEIGHT.

NOTES:

- CO-ORDINATE SPRINKLER LOCATIONS WITH LIGHTS, STRUCTURE, EXISTING PIPING, ELECTRICAL DISTRIBUTION, EQUIPMENT AND DEFLECTOR PANELS.
- SPRINKLERS SHALL BE BASED ON A LIGHT HAZARD OCCUPANCY.
- PROVIDE FIRE STOPPING AROUND ALL PIPING AT WALL PENETRATIONS.
- CONFIRM EXACT LOCATION OF DEFLECTOR PANELS ON SITE.
- COORDINATE LOCATION OF NEW SPRINKLER HEADS WITH OTHER TRADES AND EQUIPMENT.



EXISTING RECORD DRAWING INDICATE THE FOLLOWING HYDRAULIC CALCULATION FOR THIS AREA:
 HYDRAULIC CALCULATION: 650219#A.WX1
 HAZARD: LIGHT HAZARD
 DENSITY: 4.1 LPM/SQ.M.
 AREA OF OPERATION: 140.2 SQ.M.
 HOSE ALLOWANCE: 378 LPM
 DEMAND AT SOURCE: 588.3 LPM @ 3.6 BAR

EXISTING UPRIGHT SPRINKLER HEADS BELOW CEILING ELEVATION, SHOWN SOLID LIGHT WEIGHT, TO REMAIN. SPRINKLERS TO BE PROTECTED DURING EXECUTION OF WORK IN AREA.

APPROXIMATE LOCATION OF EXISTING SPRINKLER LINES, SHOWN SOLID LIGHT WEIGHT, TO REMAIN. LINES ARE PLACED IN ACCORDANCE WITH THE SPRINKLER RECORD DOCUMENTS, CONTRACTOR TO CONFIRM EXACT LOCATIONS ON SITE. (TYPICAL)

REMOVE EXISTING CEILING SPRINKLER HEAD, SHOWN DOTTED HEAVY WEIGHT, TO FACILITATE MODIFICATION OF SPRINKLERS TO SUIT NEW CEILING ELEVATION AND ARRANGEMENT.



Association of Professional Engineers & Geoscientists of Saskatchewan
CERTIFICATE OF AUTHORIZATION
HDA ENGINEERING LTD.
 Number C361
 Permission to Consult Held by:
 Discipline: Sk. Reg. No. Signature
 Mech. 6093 *J. D...*

DO NOT SCALE DRAWINGS

Revision/Revision	Description/Description	Date/Date
0	ISSUED FOR TENDER	2016-01-12

Project title/Titre du projet

**25B RANGE RENOVATION
 REGINA, SK**

Approved by/Approuvé par

Designed by/Concept par
 TKC

Drawn by/Dessiné par
 TKC
 RCMP Project Manager/Administrateur de Projets GRC
 JD

RCMP, Architectural and Engineering Resources Manager/
 Ressources Architectural et de Directeur d'ingénierie, GRC

Client/client

Drawing title/Titre du dessin

**FIRE PROTECTION REVISIONS,
 SECTIONS**

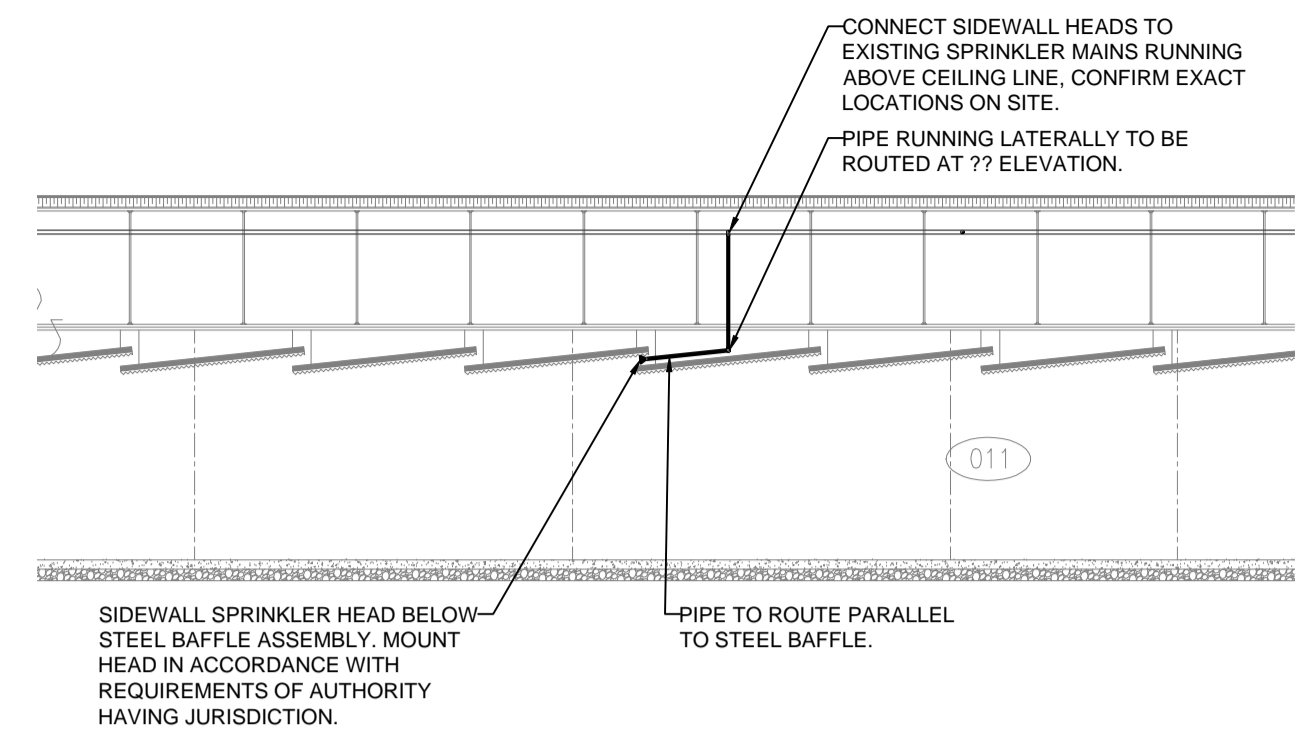
Project No./No. du projet	Sheet/Feuille	Revision no./No. de Révision
23/2015	M2.2 OF -	0

LEGEND

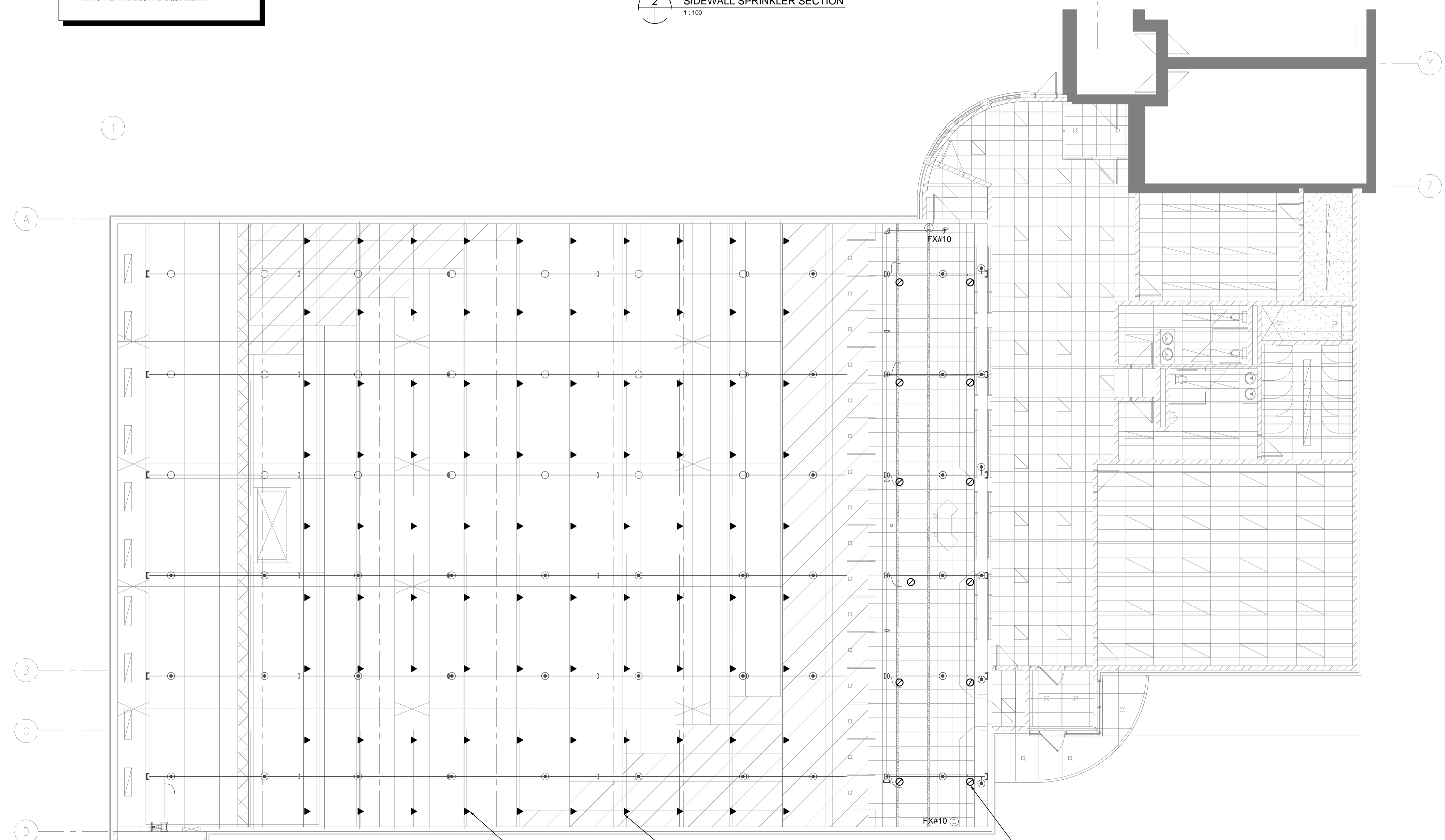
- TYPE 'A' - CHROME SEMIRECESSED PENDANT
- ⊙ TYPE 'B' - UPRIGHT BRONZE
- ⊖ TYPE 'C' - CHROME SIDEWALL
- ⊕ TYPE 'D' - CONCEALED PENDANT
- SPRINKLER HEADS TO REMAIN SHOWN SOLID LIGHT WEIGHT
- ⊙ SPRINKLERS TO BE REMOVED/REPLACED SHOWN DOTTED HEAVY WEIGHT.

NOTES:

- CO-ORDINATE SPRINKLER LOCATIONS WITH LIGHTS, STRUCTURE, EXISTING PIPING, ELECTRICAL DISTRIBUTION, EQUIPMENT AND DEFLECTOR PANELS.
- SPRINKLERS SHALL BE BASED ON A LIGHT HAZARD OCCUPANCY.
- PROVIDE FIRE STOPPING AROUND ALL PIPING AT WALL PENETRATIONS.
- CONFIRM EXACT LOCATION OF DEFLECTOR PANELS ON SITE.
- COORDINATE LOCATION OF NEW SPRINKLER HEADS WITH OTHER TRADES AND EQUIPMENT..



2 SIDEWALL SPRINKLER SECTION
 1:100

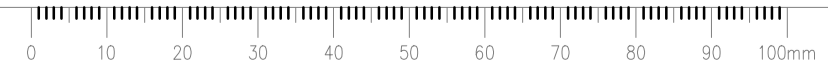


REFER TO SECTION FOR INSTALLATION OF SIDEWALL HEADS IN BETWEEN BAFFLES.

INSTALL NEW SIDEWALL SPRINKLER TO SERVE UNDER STEEL BAFFLE ASSEMBLY. REFER TO ARCHITECTURAL. CONNECT SIDEWALL HEAD TO EXISTING MAINS. LINE RUNNING LATERAL ACROSS THE RANGE SHALL BE ROUTED OVER THE MIDDLE OF EACH BAFFLE. (TYP)

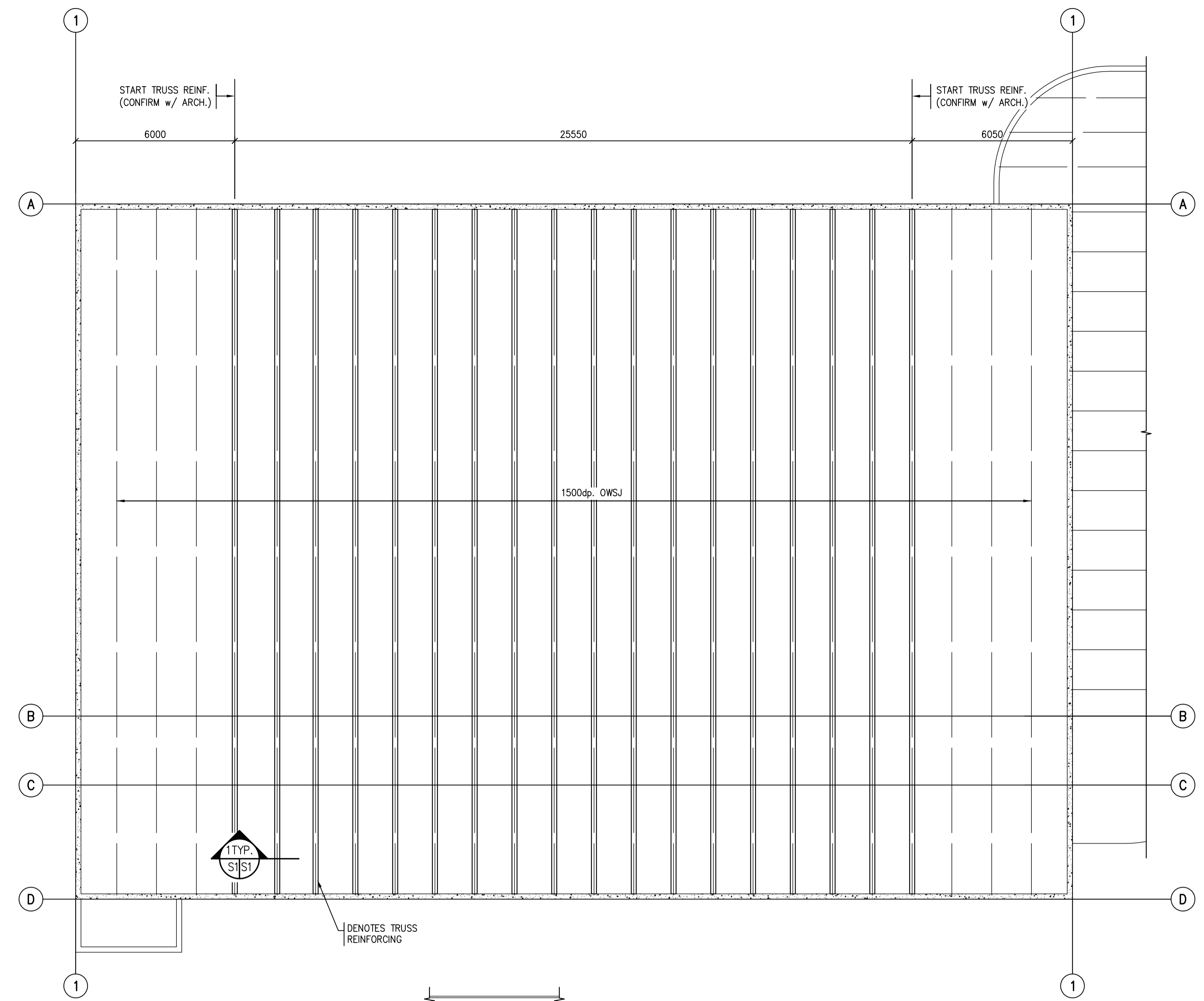
NEW CONCEALED HEAD SPRINKLER INSTALLED IN NEW CEILING TILE TO MEET SPRINKLER REQUIREMENTS. SPRINKLER HEAD DOES NOT NEED TO BE CENTERED IN TILE. CONNECT TO EXISTING MAINS. (TYPICAL OF 12)

1 MAIN FLOOR PLAN
 1:100



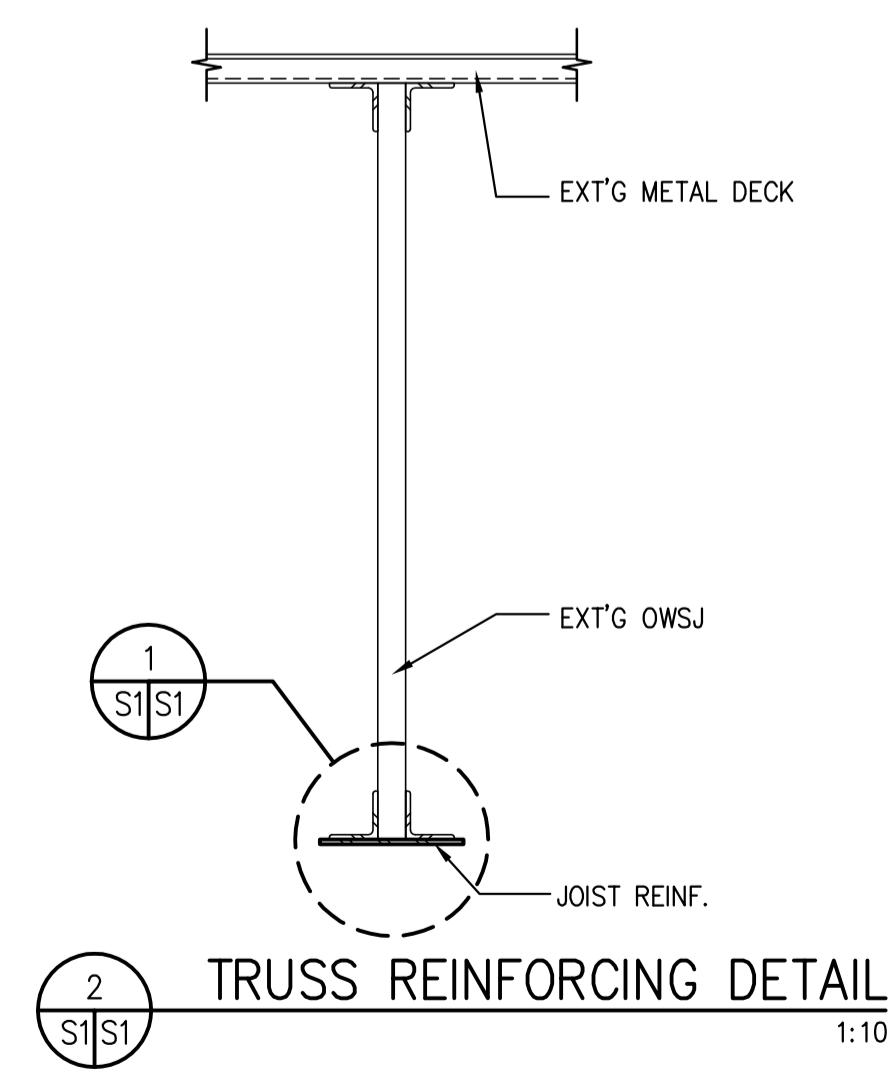


Association of Professional Engineers & Geoscientists
 of Saskatchewan
CERTIFICATE OF AUTHORIZATION
 BROWNLEE BEATON KREKE (REGINA) LTD.
NUMBER 525
 PERMISSION TO CONSULT HELD BY:
 DISCIPLINE: STRUCTURAL 12171 SIGNATURE: SKG

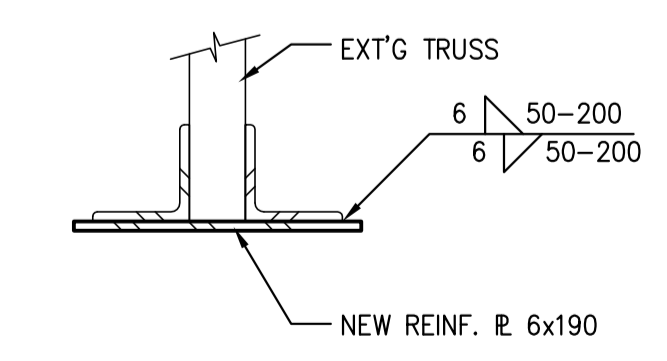


1
 NORTH
ROOF PLAN
 1:100

- NOTES:
 1. DESIGN LOADS
 LIVE LOAD = 1.2kPa
 ROOF DEAD LOAD = 0.5kPa
 BAFFLE DEAD LOAD = 1.0kPa



2
TRUSS REINFORCING DETAIL
 1:10



3
TRUSS REINF. DETAIL
 1:5

Revision/Revision	Description/Description	Date/Date
0	ISSUED FOR TENDER	2016-01-12

Project title/Titre du projet
**25B RANGE RENOVATION
 REGINA, SK**

Approved by/Approve par
 Designed by/Concept par DS
 Drawn by/Dessine par CS
 RCMP Project Manager/Administrateur de Projets GRC JD
 RCMP, Architectural and Engineering Resources Manager/
 Ressources Architectural et de Directeur d'Ingénierie, GRC

Drawing title/Titre du dessin
**PLAN
 DETAILS**

Project No./No. du projet	Sheet/Feuille	Revision no./La Revision no.
23/2015	S1 OF -	0

