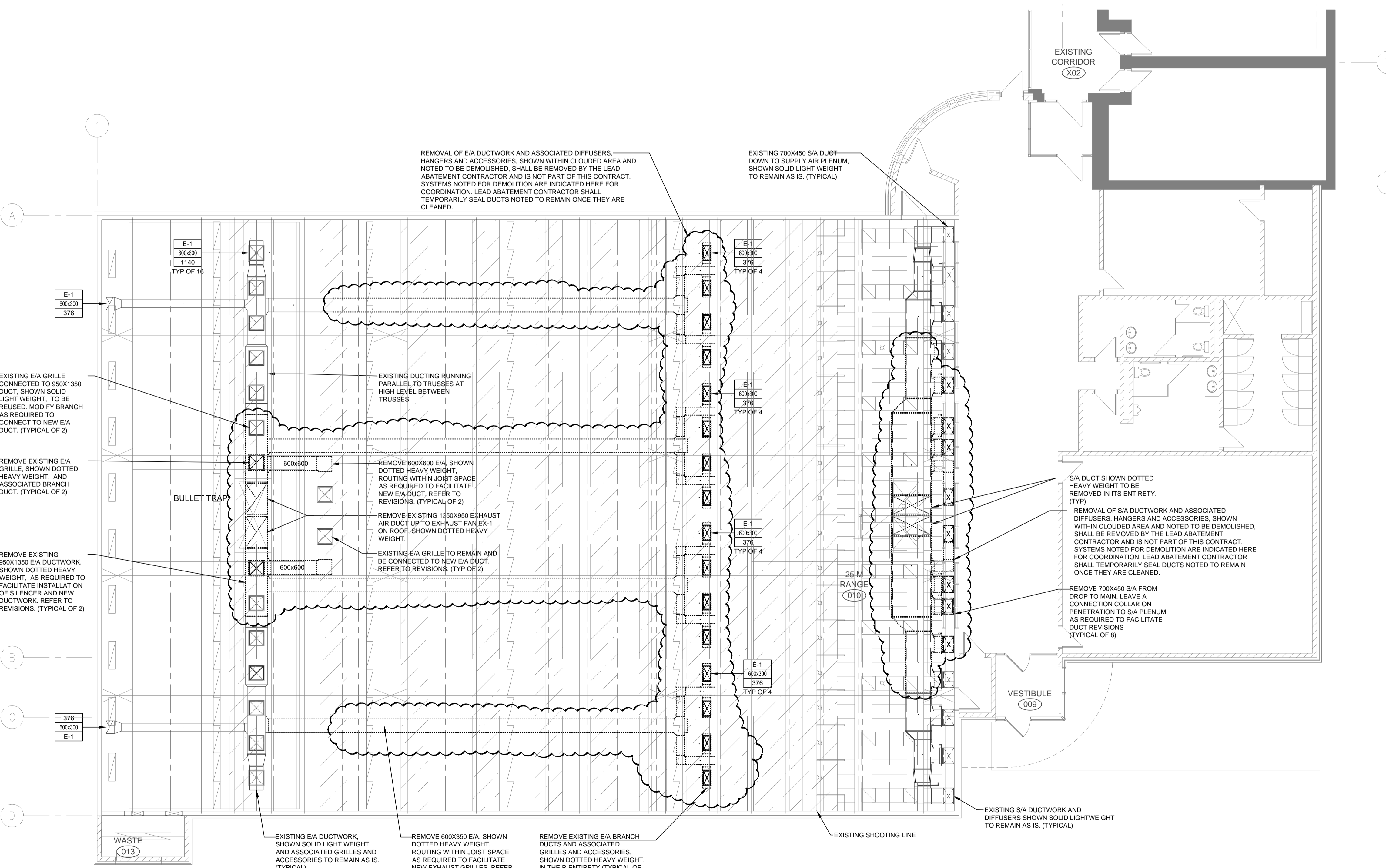


VENTILATION GENERAL NOTES

- ALL DUCTWORK SHOWN DOUBLE LINE INSIDE PERIMETER OF DUCT IS TO BE COMPLETE WITH 25mm INTERNAL INSULATION. ALL OTHER DUCTWORK IS TO BE C/W 25mm EXTERNAL INSULATION. SIZES INCLUDE INTERNAL INSULATION WHERE APPLICABLE.
- ALL FITTINGS ON INTERNALLY INSULATED DUCTWORK ARE TO BE C/W INTERNAL INSULATION. ALL OTHERS ARE TO BE EXTERNALLY INSULATED.
- ALL SUPPLY AIR AND EXHAUST AIR BRANCH DUCTS TO GRILLES AND DIFFUSERS ARE TO BE C/W BALANCE DAMPERS IN BRANCH DUCT NEAR MAIN, UNLESS BALANCE DAMPERS ARE PROVIDED IN GRILLE OR DIFFUSER.
- ALL EXHAUST FANS ARE TO BE SUSPENDED FROM STRUCTURE ON THREADED ROD C/W SPRING ISOLATORS.
- PROVIDE TURNING VANES IN ELBOWS
- PROVIDE ACCESS DOORS FOR ACCESS TO ALL MOTORIZED DAMPERS, FIRE DAMPERS, HUMIDIFIERS AND CONTROL DEVICES, AND TO FACILITATE DUCT CLEANING.
- COORDINATE ALL WORK WITH OTHER TRADES.
- RUN DUCTS AS HIGH AS POSSIBLE TO PROVIDE MAXIMUM CLEARANCE.



Association of Professional Engineers & Geoscientists of Saskatchewan
CERTIFICATE OF AUTHORIZATION
HDA ENGINEERING LTD.
 Number C361
 Permission to Consult Held by:
 Discipline: Mech. Sk. Reg. No. 6093 Signature: *J. Downer*

DO NOT SCALE DRAWINGS

Revision/Revision Client/client	Description/Description	Date/Date
0	ISSUED FOR TENDER	2016-01-12

Project title/Titre du projet
**25B RANGE RENOVATION
 REGINA, SK**

Approved by/Approuve par
 Designed by/Concept par
 TKC
 Drawn by/Dessine par
 TKC
 RCMP Project Manager/Administrateur de Projets GRC
 JD
 RCMP, Architectural and Engineering Resources Manager/
 Ressources Architectural et de Directeur d'Ingénierie, GRC

Drawing title/Titre du dessin
VENTILATION DEMOLITION

Project No./No. du projet 23/2015	Sheet/Fauille M1.1 OF -	Revision no./Loi Révision no. 0
---------------------------------------------	--------------------------------------	-------------------------------------------