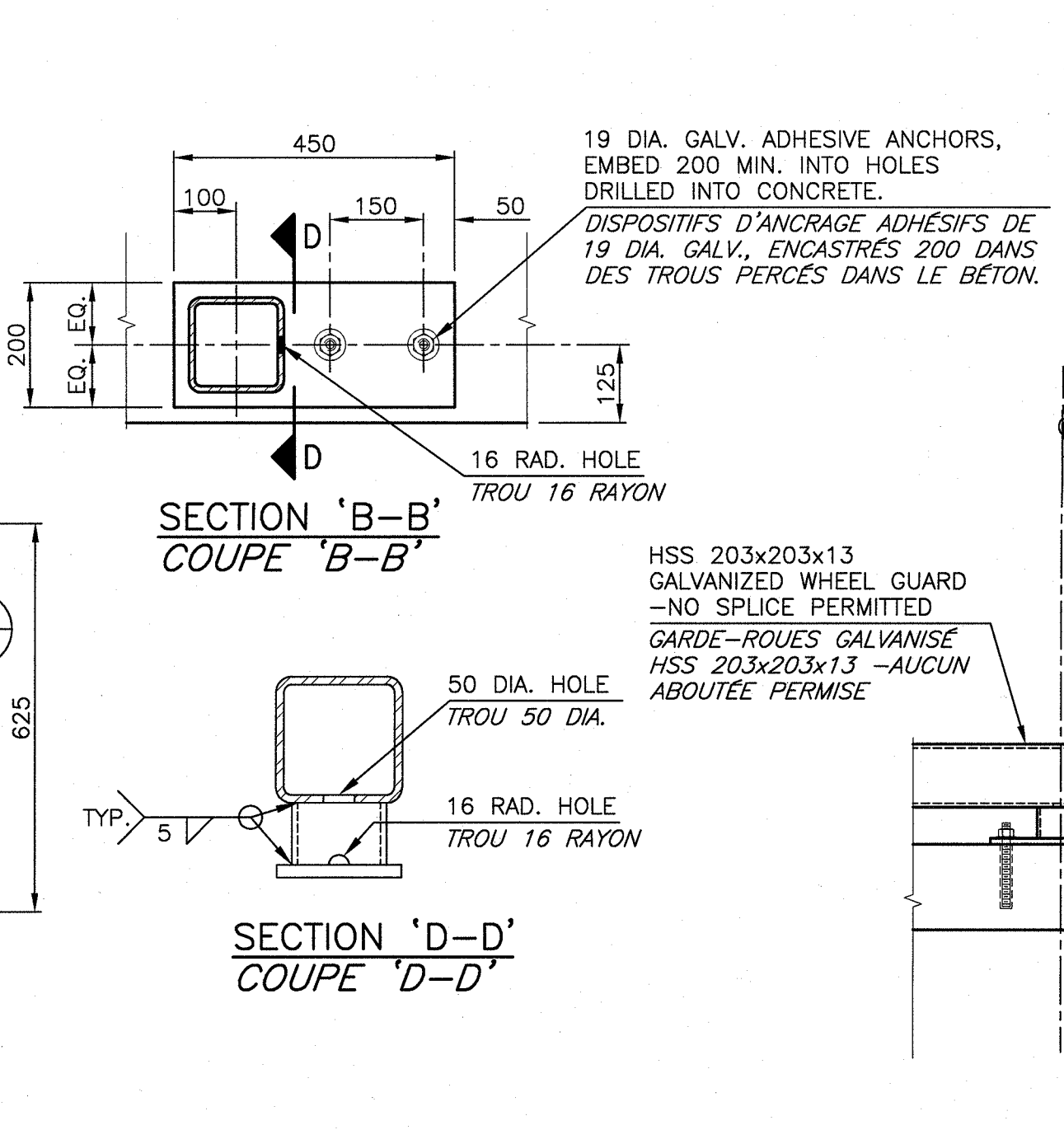


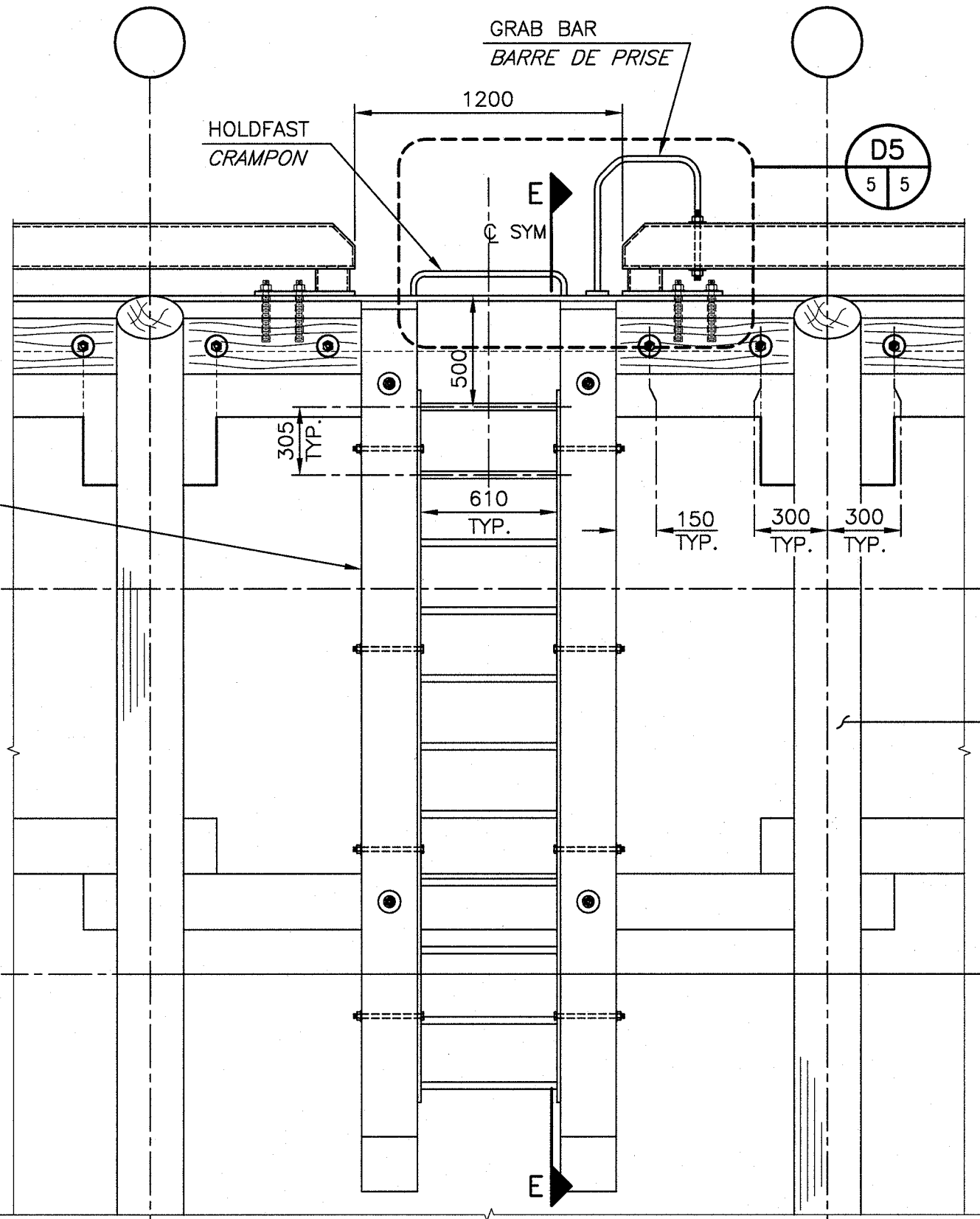
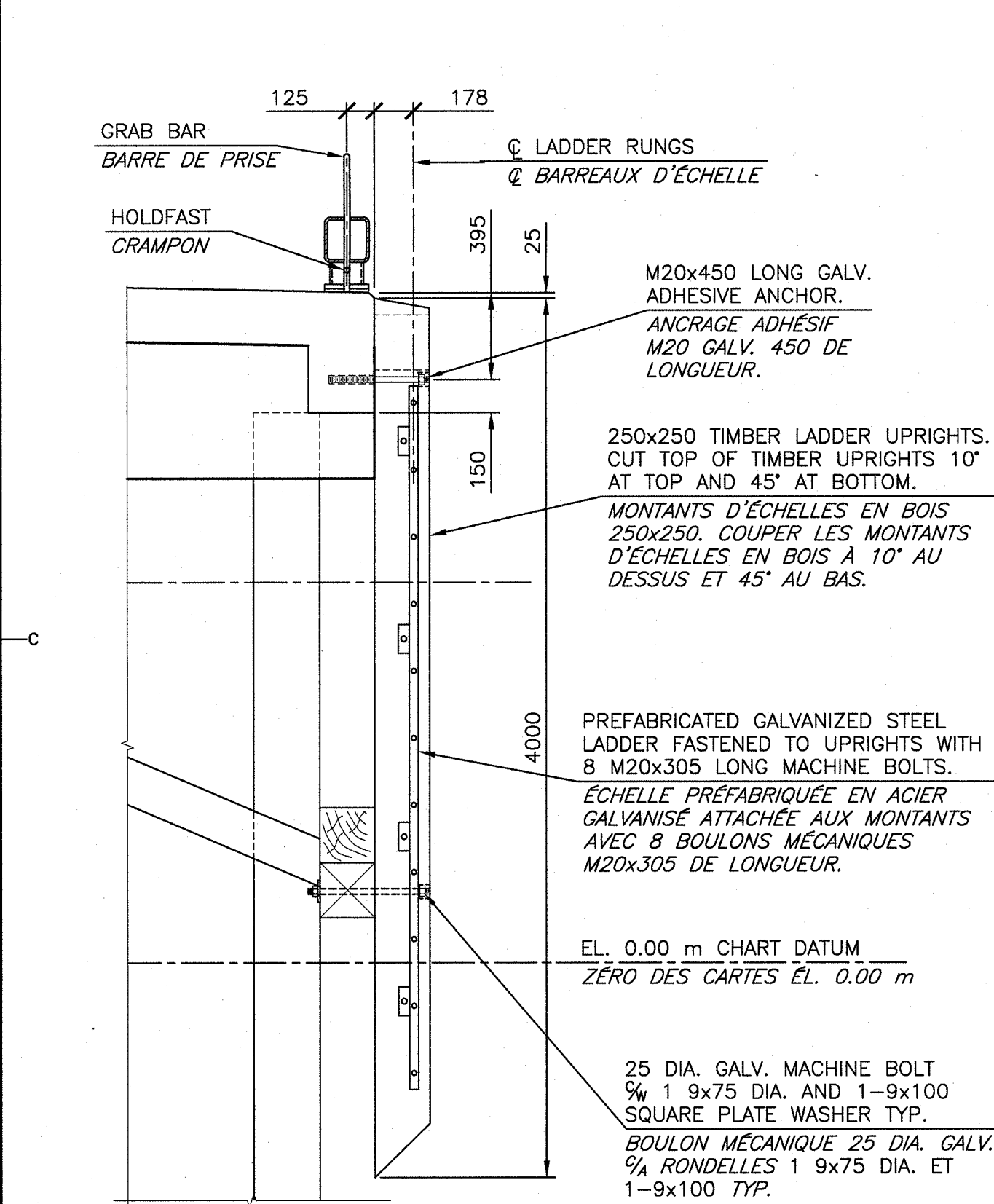
HOLDFAST AND GRAB BAR DETAIL
DÉTAIL POUR CRAMPON ET BARRE DE PRISE

SCALE/ÉCHELLE: 1:10
0mm 100 200 300 400 500 600 700 800 900 1000mm



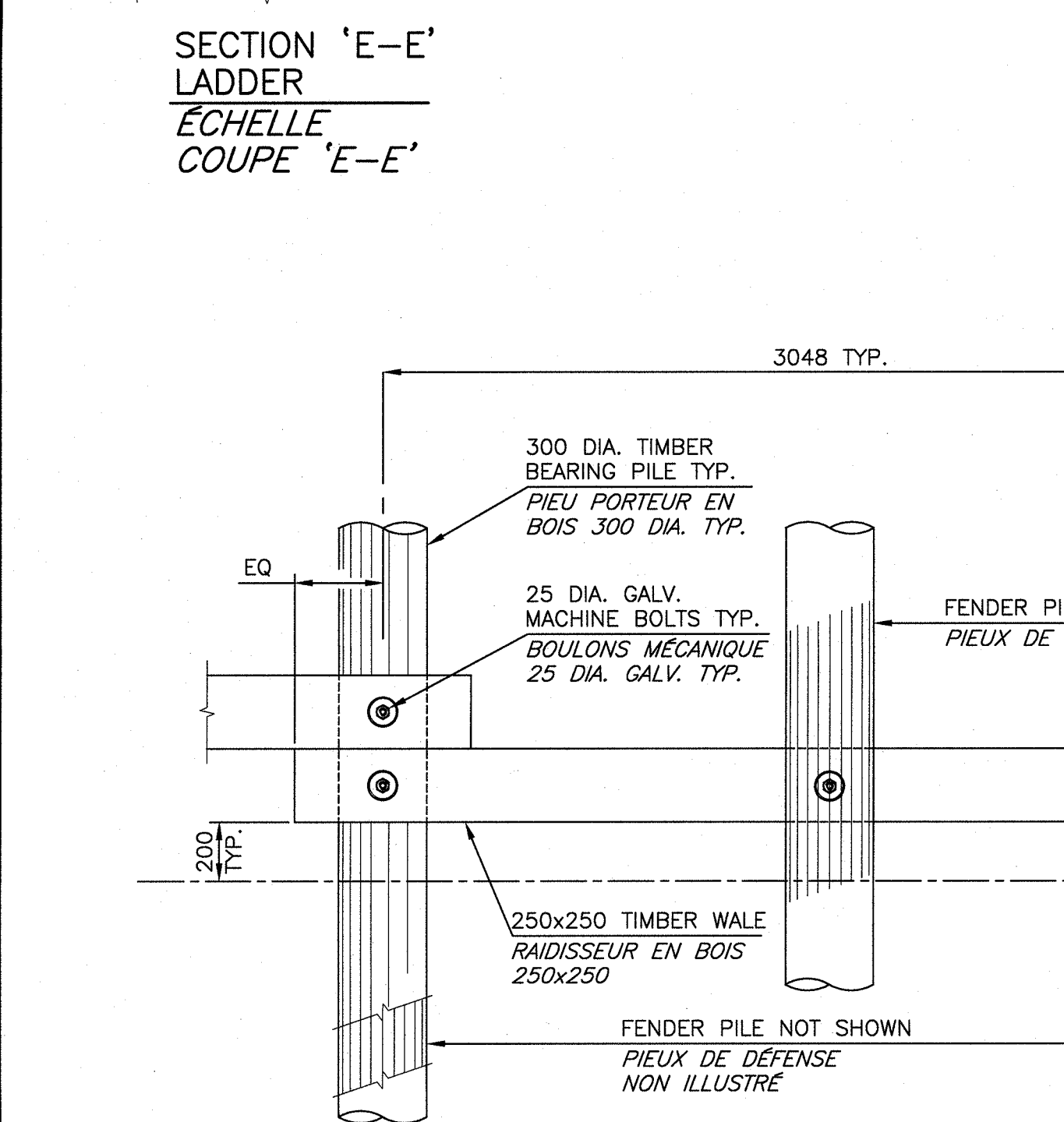
TYPICAL WHEEL GUARD INSTALLATION ALONG WHARF FACE
DÉTAIL TIPIQUE DU GARDE-ROUES À LA FACE DU QUAI

SCALE/ÉCHELLE: 1:20
0mm 500mm 1000mm 1500mm 2000mm 2500mm



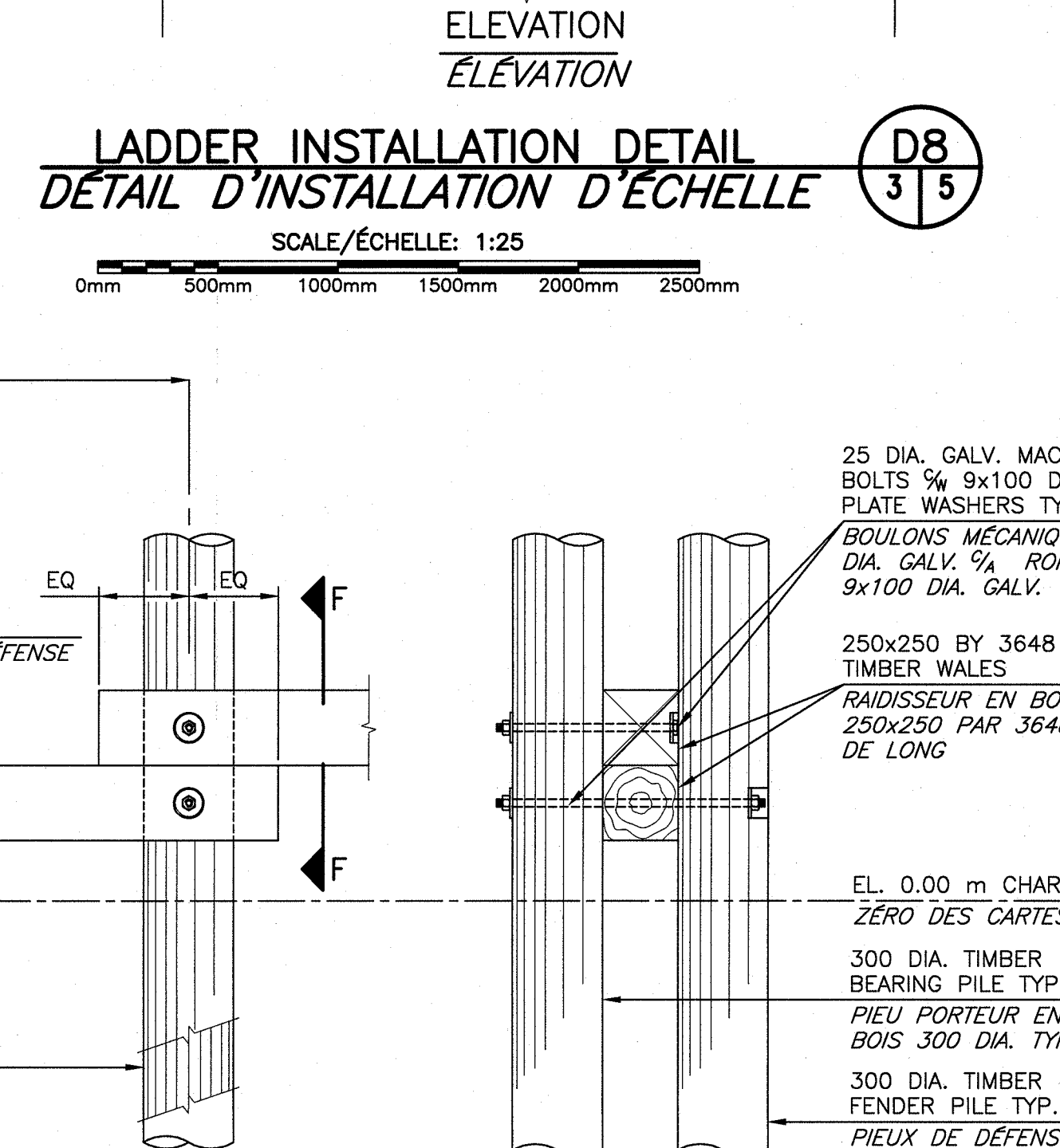
LADDER INSTALLATION DETAIL
DÉTAIL D'INSTALLATION D'ÉCHELLE

SCALE/ÉCHELLE: 1:25
0mm 500mm 1000mm 1500mm 2000mm 2500mm

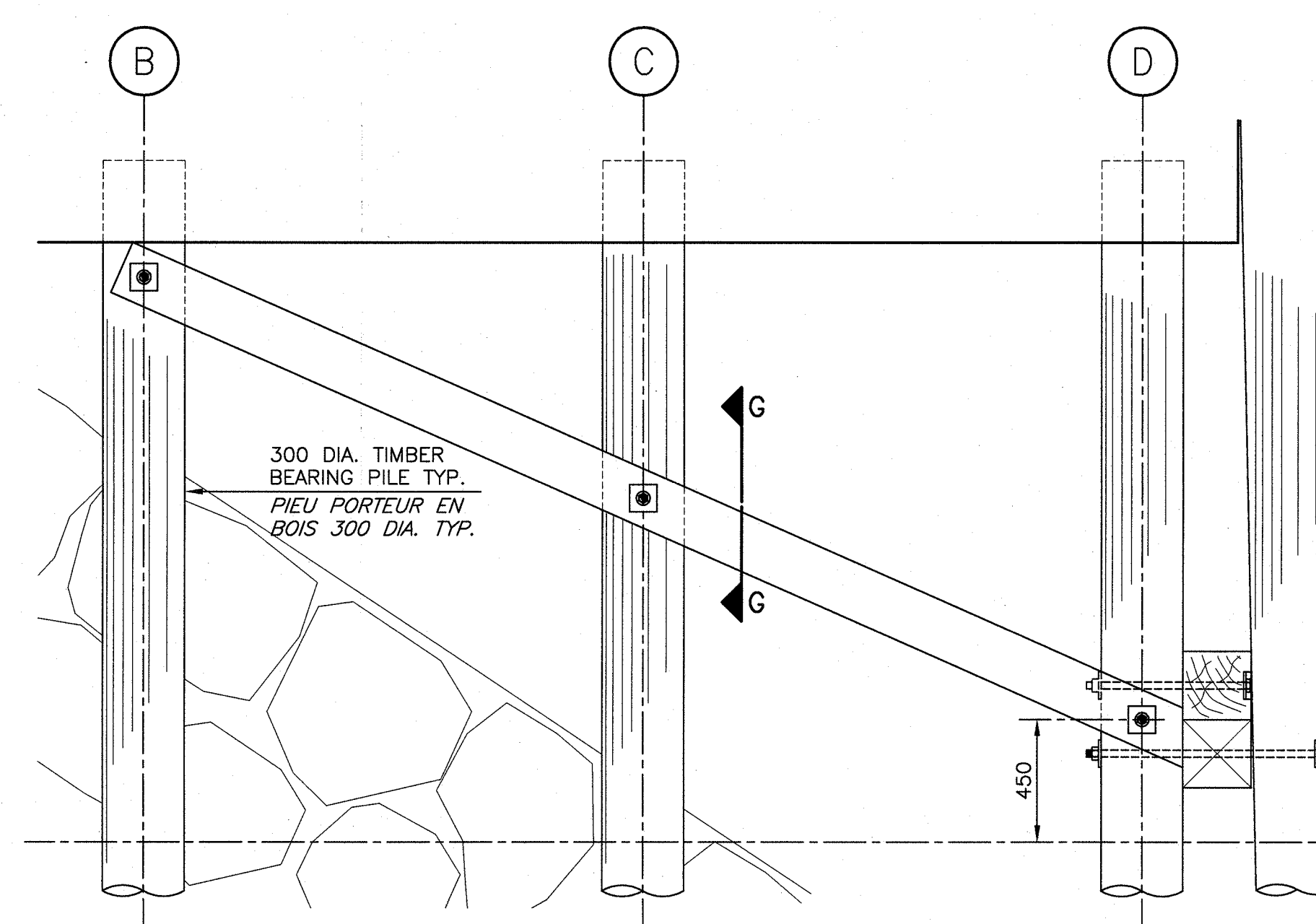


TYPICAL TIMBER WALE DETAIL
DÉTAIL TIPIQUE DU RAIDSSEUR EN BOIS

SCALE/ÉCHELLE: 1:20
0mm 500mm 1000mm 1500mm 2000mm 2500mm

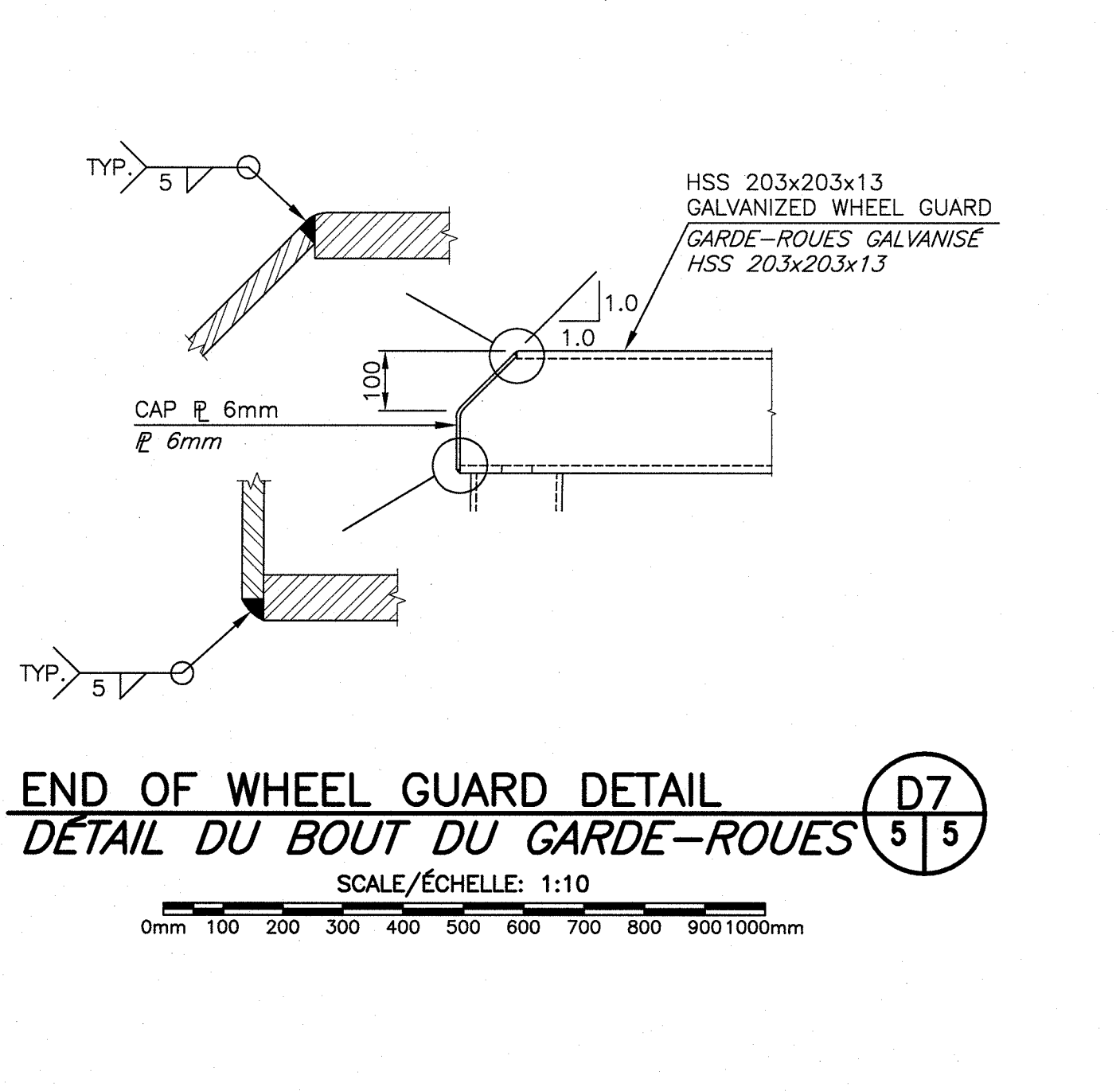


SECTION 'F-F'



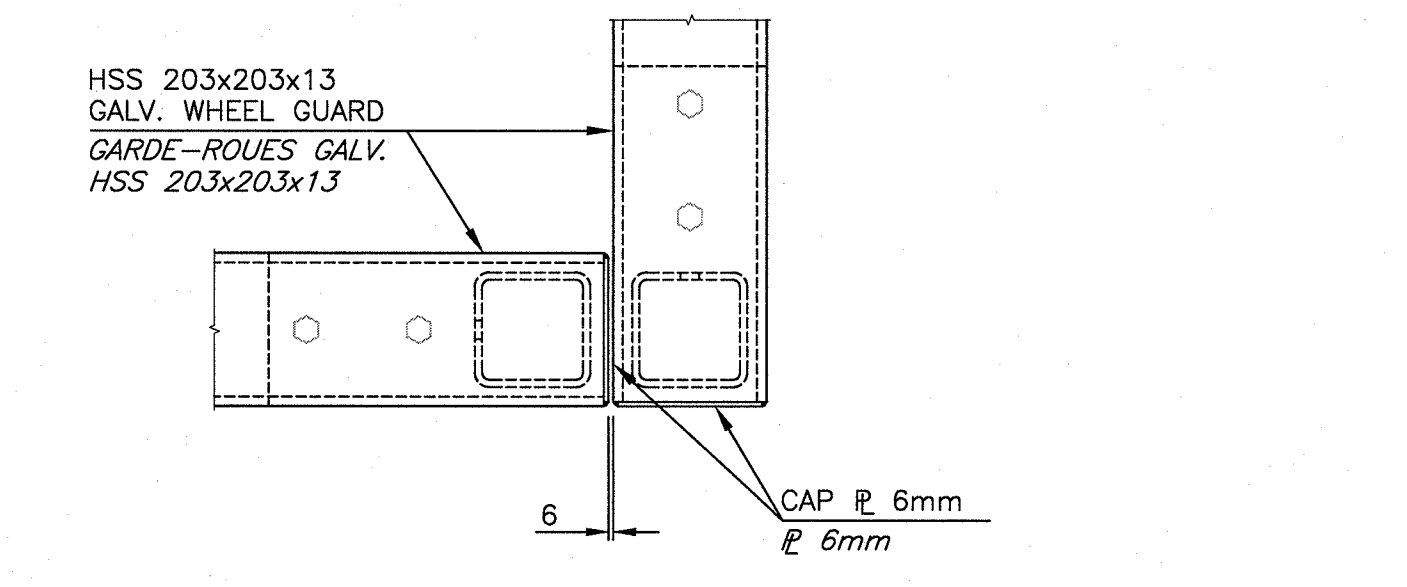
TYPICAL BRACING DETAIL
DÉTAIL TIPIQUE DU CONTREVENTEMENT

SCALE/ÉCHELLE: 1:20
0mm 500mm 1000mm 1500mm 2000mm 2500mm



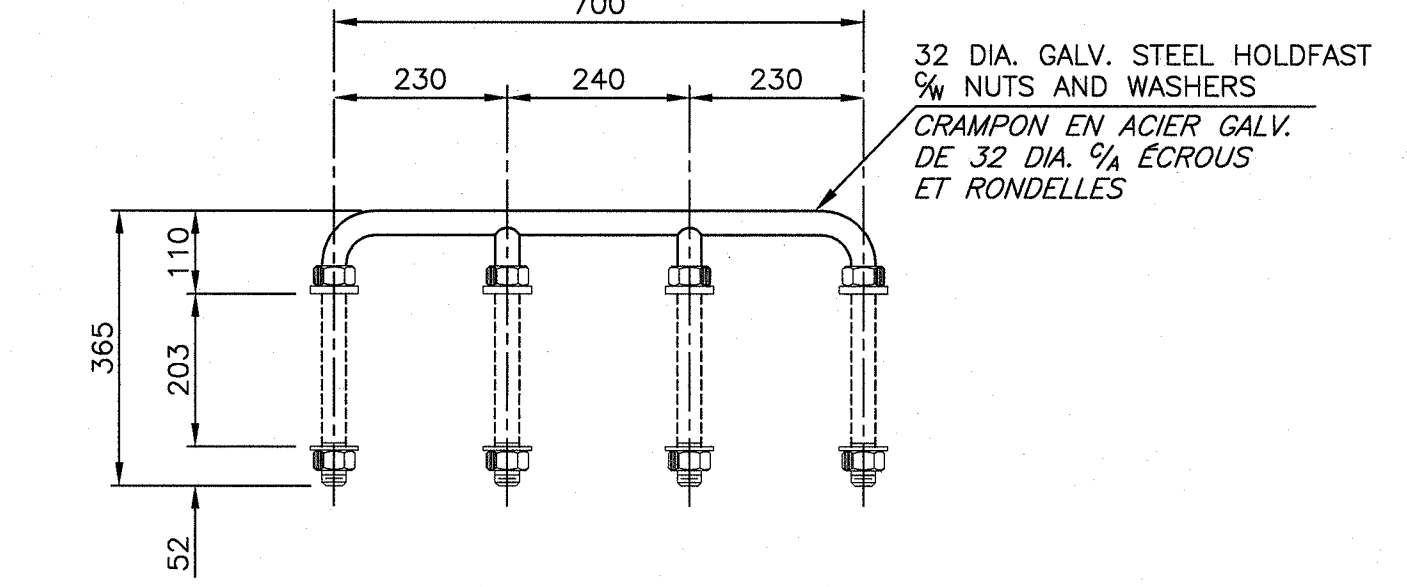
END OF WHEEL GUARD DETAIL
DÉTAIL DU BOUT DU GARDE-ROUES

SCALE/ÉCHELLE: 1:10
0mm 100 200 300 400 500 600 700 800 900 1000mm



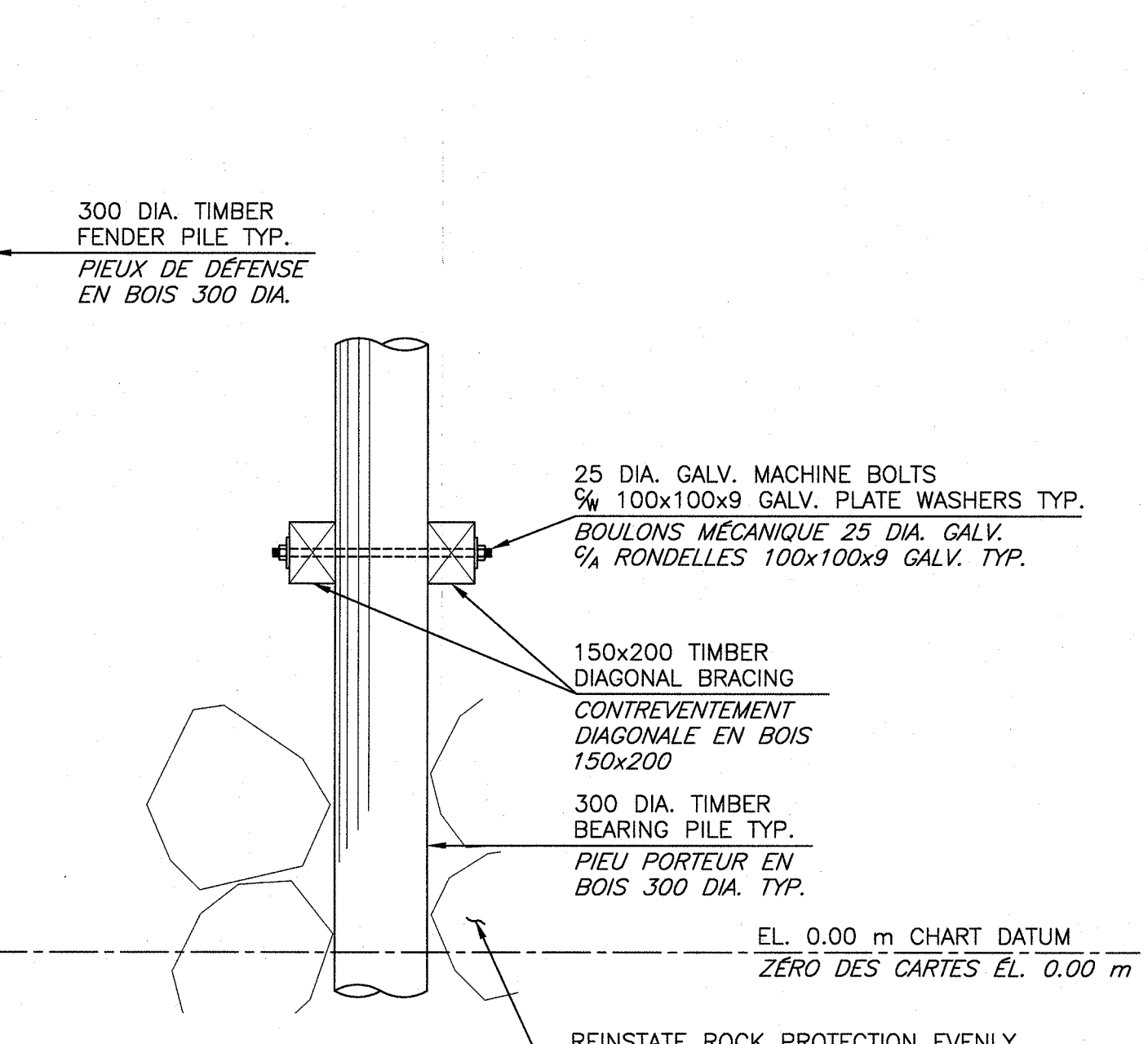
CORNER OF WHEEL GUARD DETAIL
DÉTAIL DU COIN DU GARDE-ROUES

SCALE/ÉCHELLE: 1:10
0mm 100 200 300 400 500 600 700 800 900 1000mm



MOORING HOLDFAST DETAIL
DÉTAIL DE CRAMPON D'AMARRAGE

SCALE/ÉCHELLE: 1:10
0mm 100 200 300 400 500 600 700 800 900 1000mm



SECTION 'G-G'

SCALE/ÉCHELLE: 1:20
0mm 500mm 1000mm 1500mm 2000mm 2500mm

VALRON

100 rue Cameron St., Suite 5000
Moncton, NB E1C 5Y6
http://www.valron.ca
Job No. 15111

Phone: 506.856.9601
Fax: 506.854.6820
Email: valron@valron.ca

ALL DETAILS AND NOTES FOR STRUCTURAL REQUIREMENTS AS SHOWN ON THIS DRAWING ARE PRODUCED SPECIFICALLY FOR THIS PROJECT AND ARE THE SOLE PROPERTY OF VALRON ENGINEERS INC. THEY MAY NOT BE REPRODUCED, COPIED OR OTHERWISE USED WITHOUT EXPRESS WRITTEN PERMISSION FROM THE AFORESAIDED. COPYRIGHT 2016, VALRON ENGINEERS INC.

TOUTE INFORMATION INDIQUÉE SUR CE Dessin EST SPÉCIFIQUEMENT À CE PROJET ET CONSIDÉRÉE LA PROPRIÉTÉ DE VALRON ENGINEERS INC. IL EST STRICTEMENT INTERDIT DE REPRODUIRE ET/OU UTILISER CES DOCUMENTS SANS PERMISSION PAR ÉCRIT DU SÉMENTAIRE. DROIT D'AUTEUR 2016, VALRON ENGINEERS INC.

revisions	date

project **NEW MARGINAL WHARF
STE-MARIE-ST-RAPHAEL
NOUVEAU QUAI LONGITUDINAL
STE-MARIE-ST-RAPHAEL**

COMITÉ DE GLOUCESTER COUNTY, N.B.

drawing **SECTIONS AND DETAILS
COUPES ET DÉTAILS**

designed RBV
date JAN. 2016
drawn RK
date JAN. 2016
approved JMC
date FEB. 2016
Tender
PWSC Project Manager Administrateur de projets TPSCC
project number **R.080537.001**
drawing no. **M5 of/de 6**