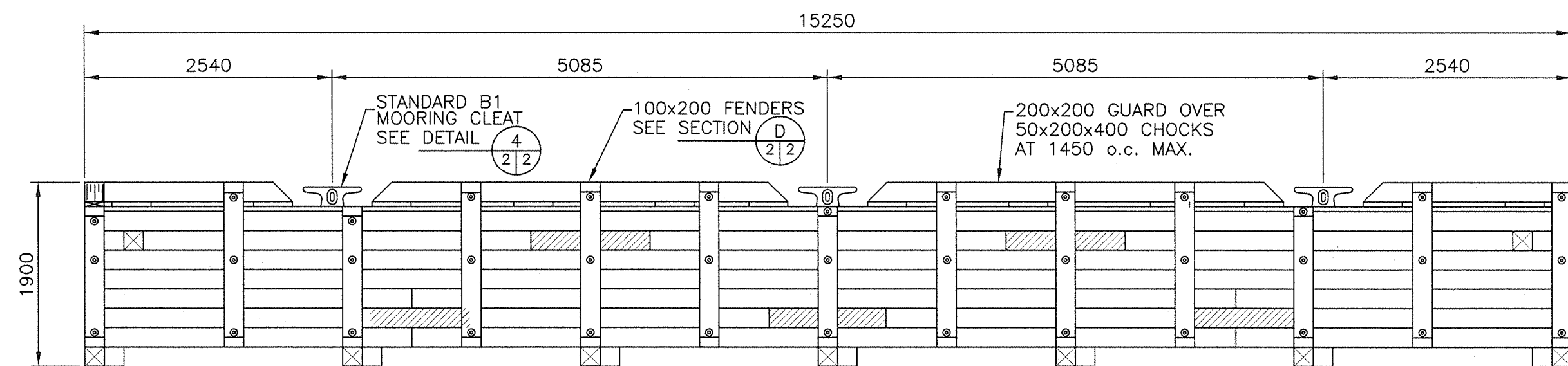
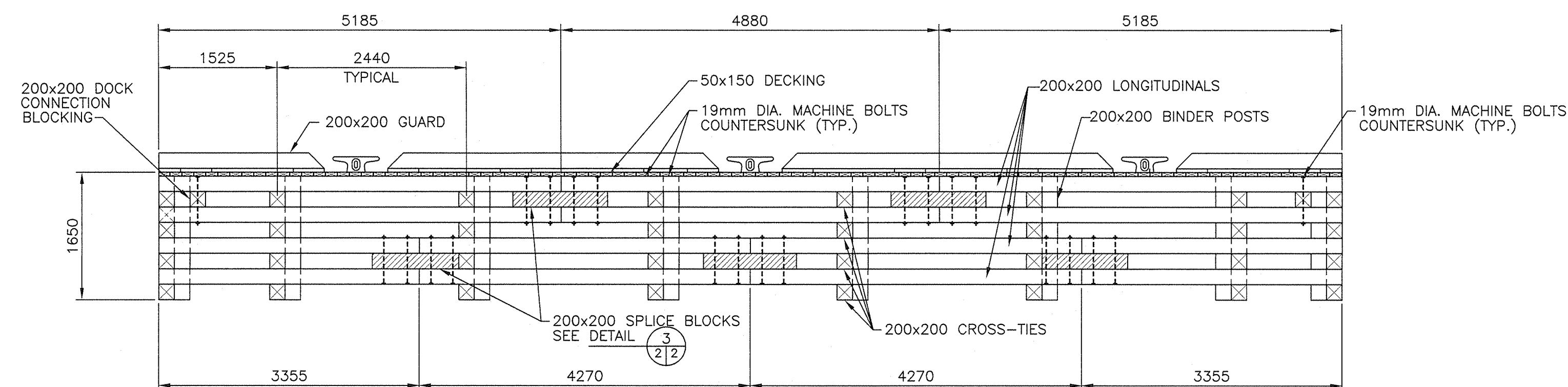


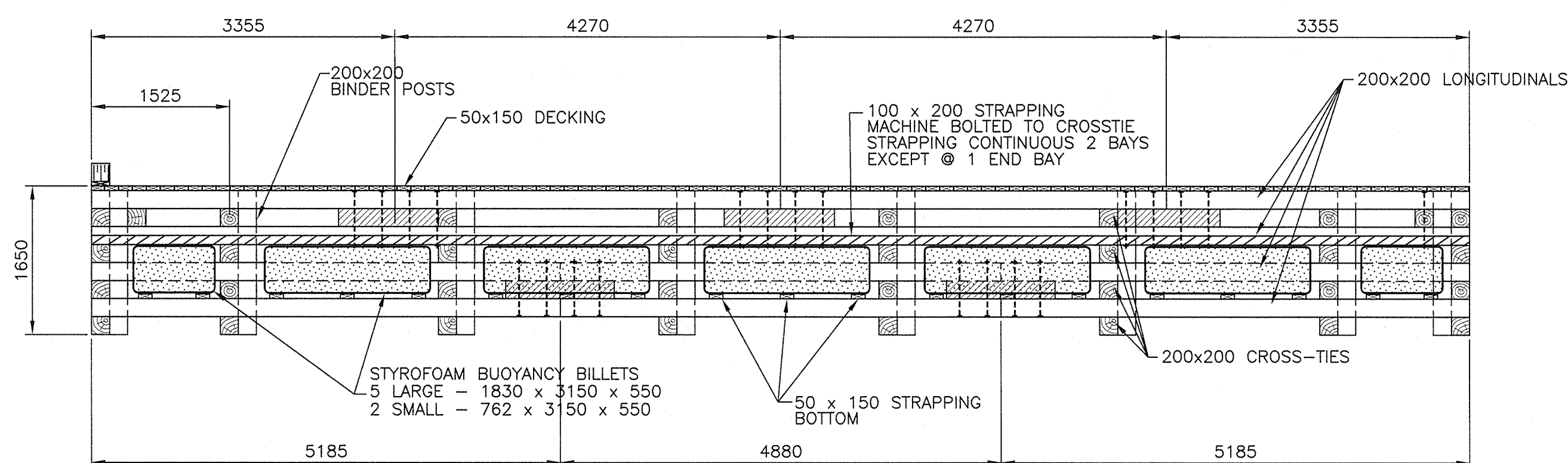
PLAN OF FLOATING DOCK MODULE 10 REQUIRED



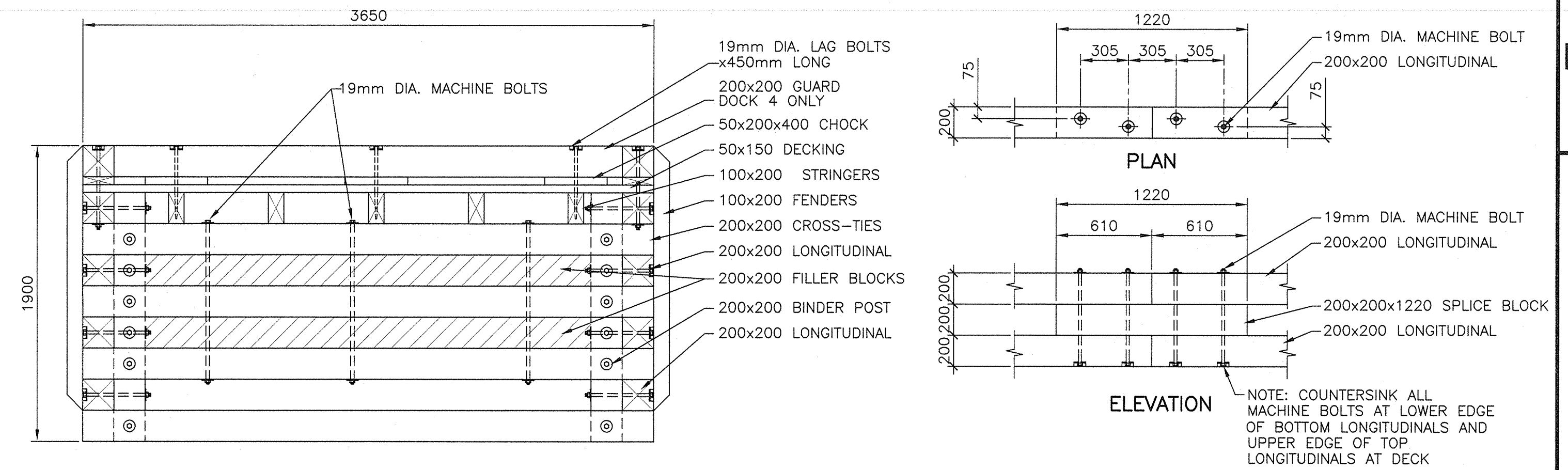
FLOATING DOCK MODULE ELEVATION



DOCK SECTION (EXTERIOR LONGITUDINALS)

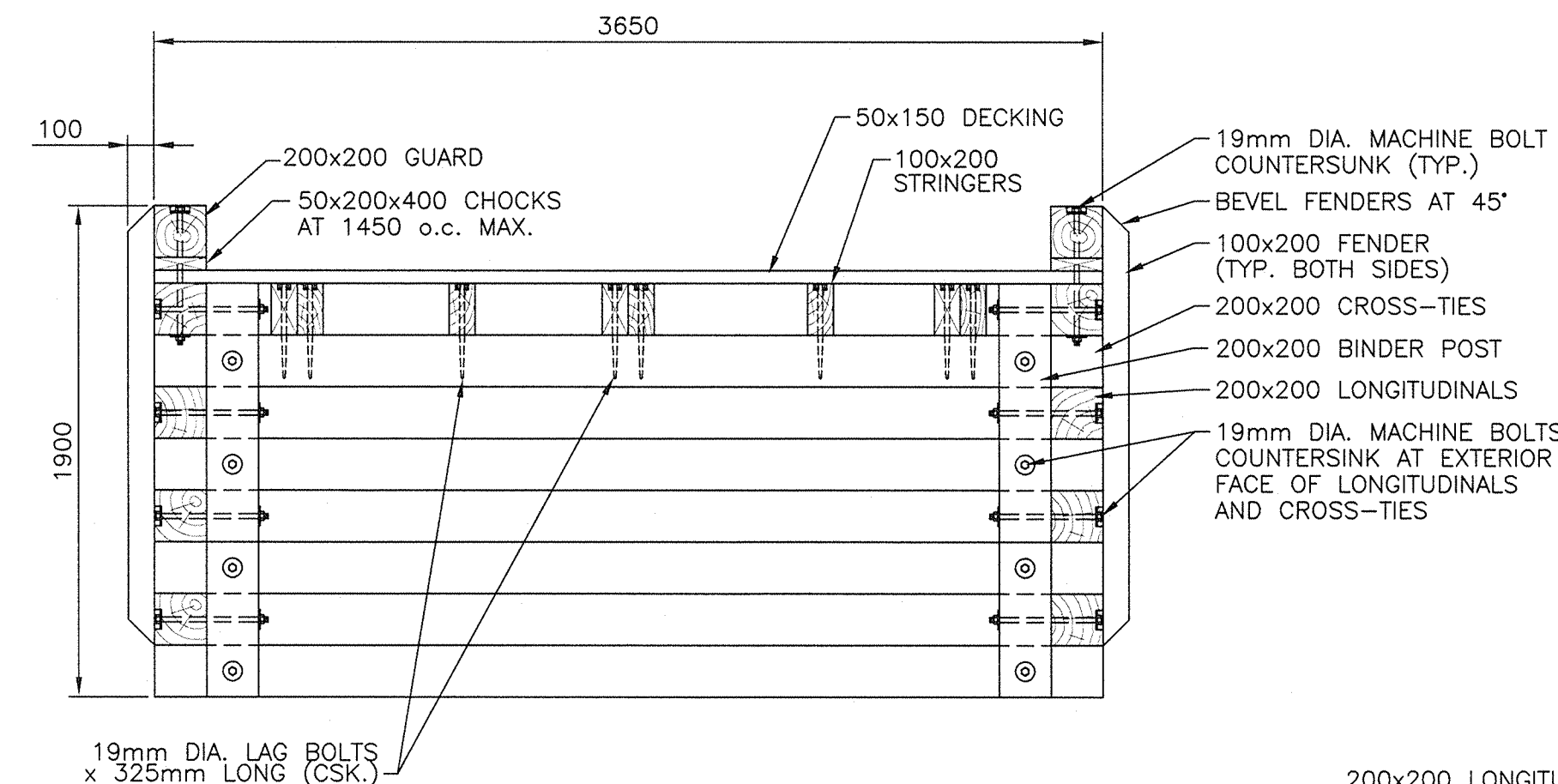


DOCK SECTION (INTERIOR LONGITUDINALS)

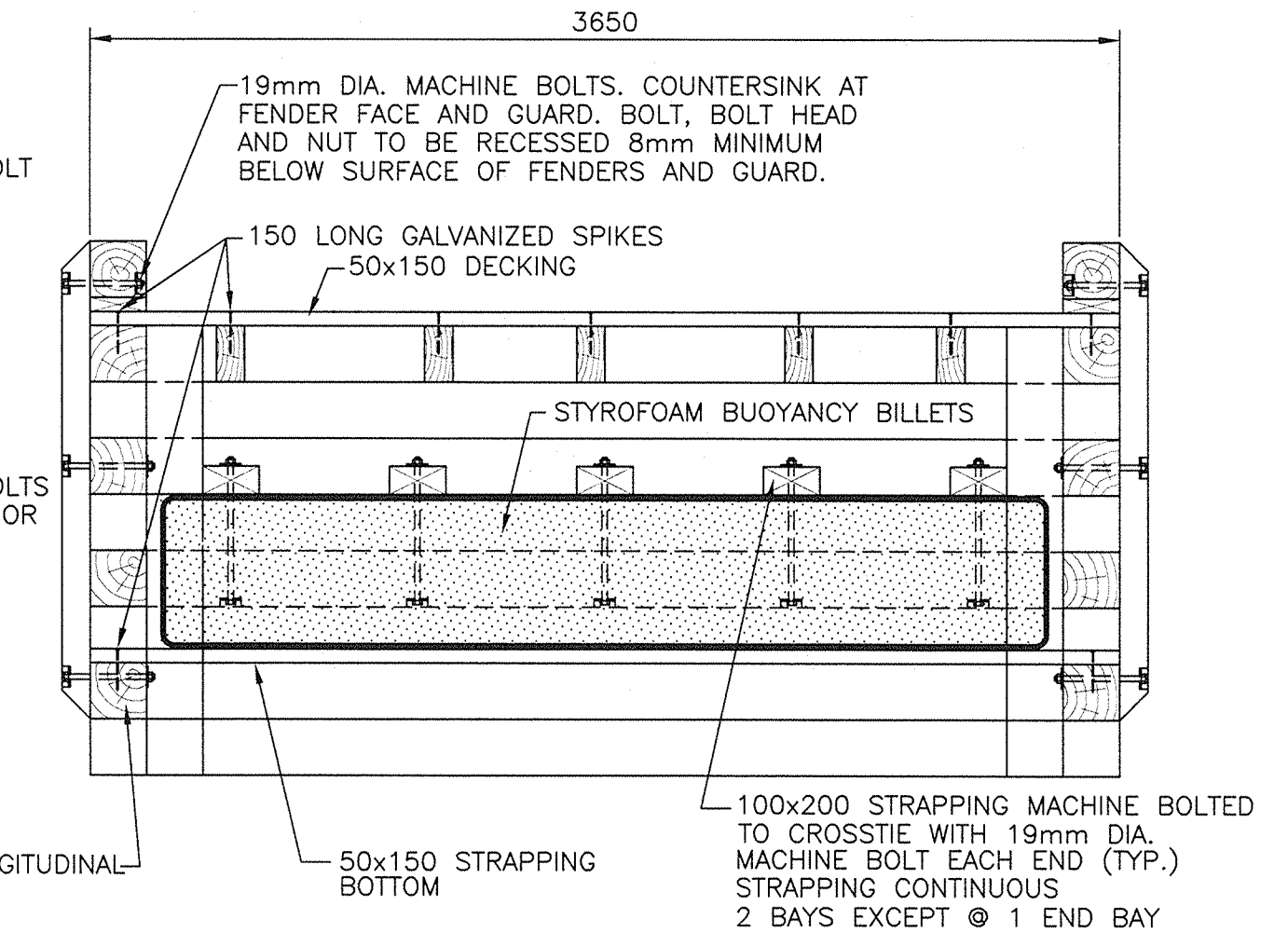


FLOATING DOCK MODULE END ELEVATION

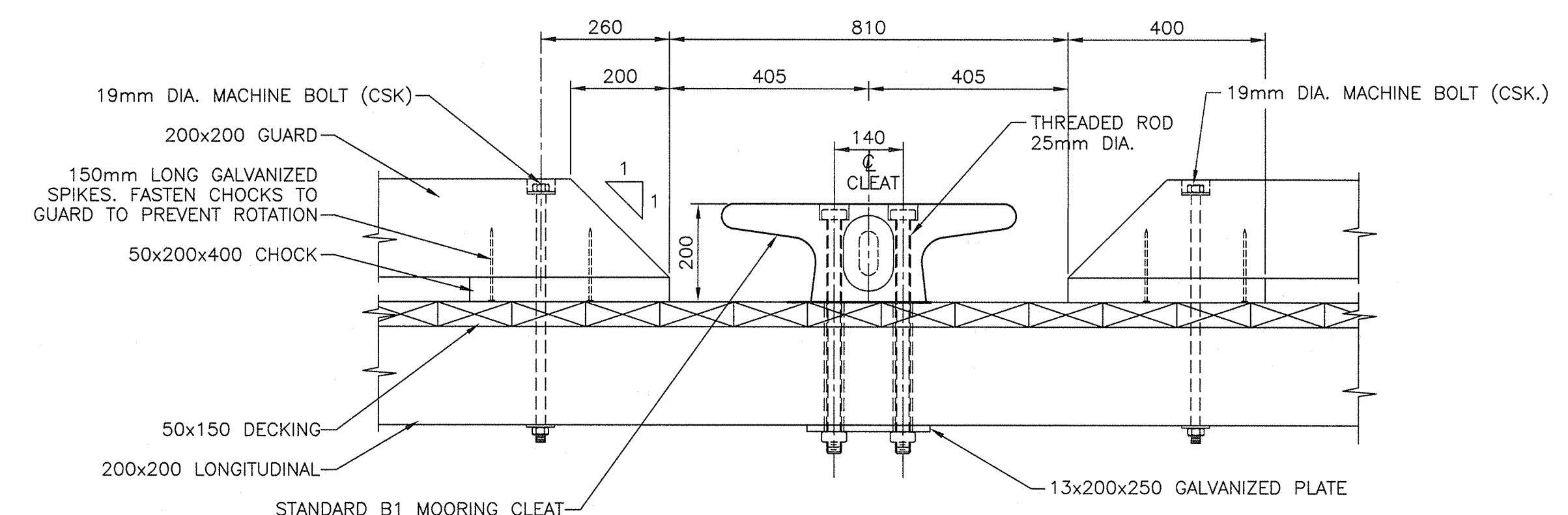
SPlice BLOCK DETAIL



FLOATING DOCK MODULE SECTION



FENDER, DECK AND BILLET SECTION



STANDARD B1 MOORING CLEAT DETAIL

FLOATING DOCK MODULE -- MATERIAL LIST PER DOCK	
QTY	METRIC DESIGNATION
12	200x200x6100 LONGITUDINALS
8	200x200x4270 LONGITUDINALS
8	200x200x4880 LONGITUDINALS
32	200x200x3650 CROSS-TIES
2	200x200x3650 CONNECTION BLOCKING
16	200x200x1600 BINDER POSTS
14	200x200x1220 SPlice BLOCKS
4	200x200x3250 FILLER BLOCKS
7	1830x3150x550 BUOYANCY BILLETS
120*	50x150x3650 DECKING
15	100x200x5532 STRINGERS
5	100x200x2760 STRINGERS
20	50x200x400 GUARD CHOCKS
4	200x200x7476 GUARD (BEVEL 2 ENDS)
1	200x200x3250 GUARD (outer end dock 4 only)
20	100x200x1700 FENDERS (BEVEL 2 ENDS)
10	100x200x1450 FENDERS (BEVEL 2 ENDS)
6	STANDARD B1 MOORING CLEATS
21	50x150x3650 STRAPPING (BOTTOM)
15	100x200x5326 STRAPPING (TOP)
5	100x200x2710 STRAPPING (TOP ENDS)

* EXACT NUMBER OF DECKING MAY VARY DUE TO VARIATIONS IN WIDTH AND SPACING OF PLANKS.
DECKING TO BE MILLED ONE SIDE TO ENSURE EVEN THICKNESS AND INSTALLED ROUGH SIDE UP.

** 23 CHOCKS ON OUTER END DOCK 4 ONLY.

0 ISSUED FOR TENDER JAN. 2016

revisions project date

FLOATING DOCK REPLACEMENT

INGOMAR SHELburne CO., NS

drawing dessin

FLOATING DOCK MODULE PLAN, ELEVATION, SECTIONS AND DETAIL

designed PWGSC conçu

date DEC. 2015

drawn R.L. SMELTZER dessiné

date DEC. 2015

approved Soumission

Tender PWGSC Project Manager Administrateur de projets TPSGC

project number no. du projet

R.078245.001

drawing no. no. du dessin

Sht.2 of 3