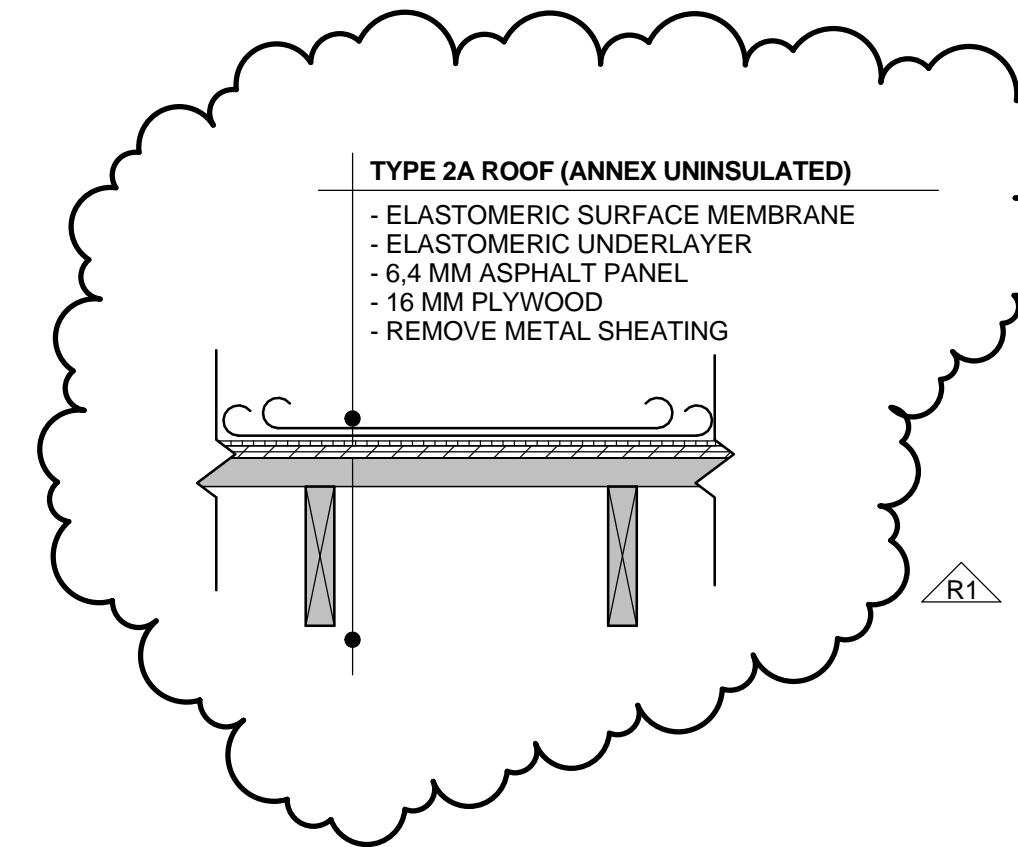




KEY PLAN

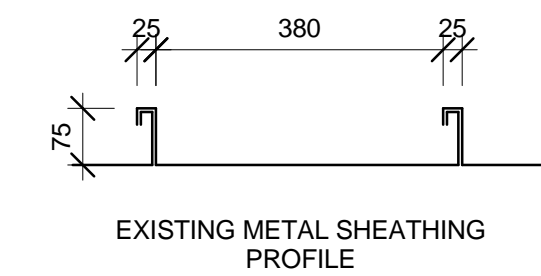
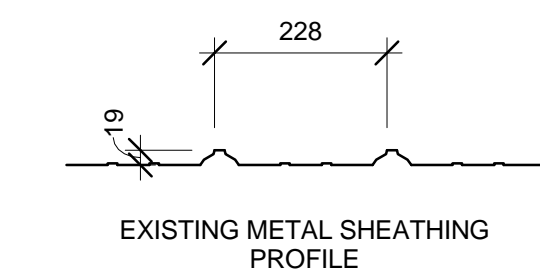
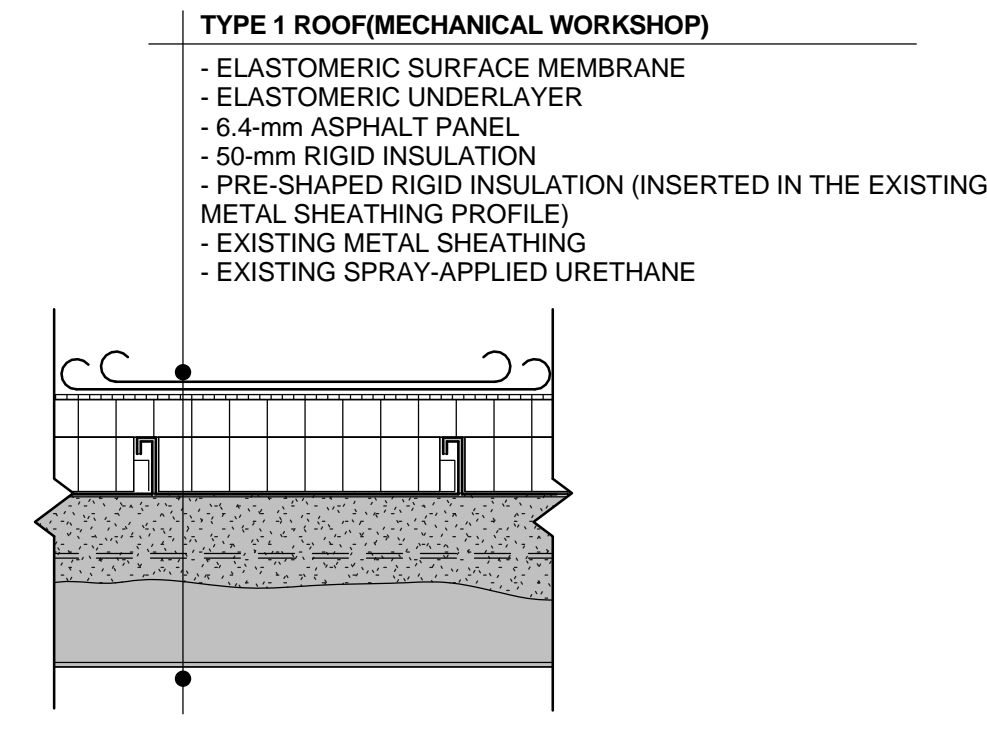
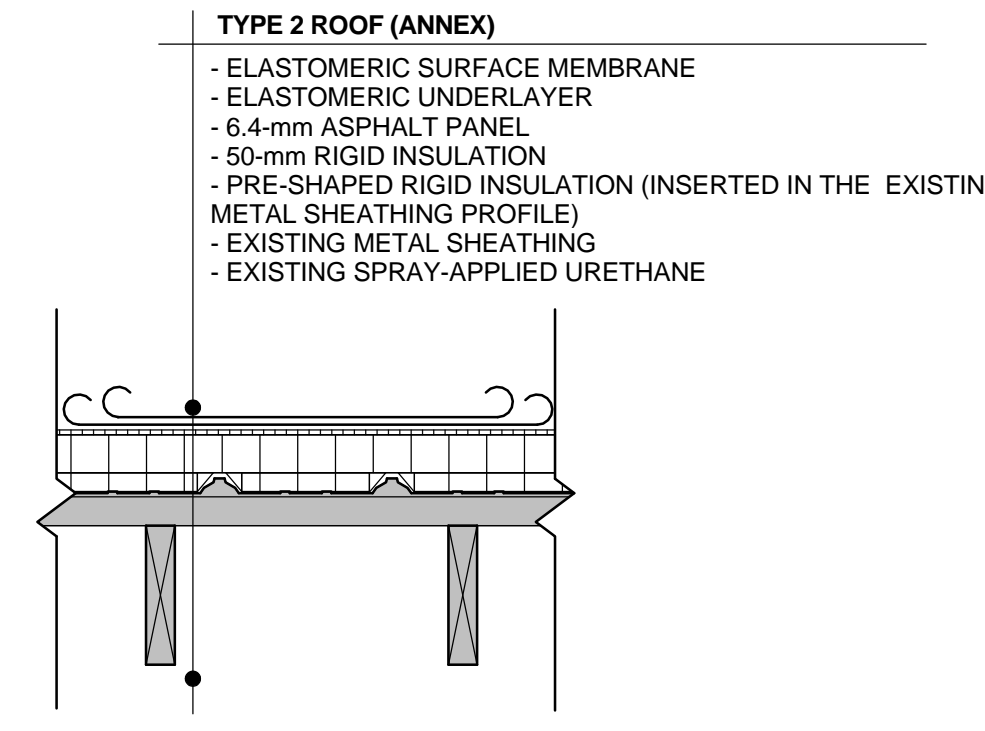


NOTE: TYPE 1 ROOF, MECHANICAL SHOP

- DEMOLISH ALL ICE STOPS AND RAIN GUTTERS ON THE WORKSHOP BUILDING.
- REMOVE ALL LIGHT FIXTURES TO ALLOW WORK TO BE CARRIED OUT; THEN REINSTALL THEM.
- PLAN TO LIFT UP FLASHING AND CHIMNEYS.
- SUPPLY AND INSTALL A SECTION OF NEW INDUSTRIAL RAIN GUTTERS ON THE WORKSHOP BUILDING IN THE AREA INDICATED ON PAGE 1 OF THE DRAWINGS. INCLUDE ALL NECESSARY DOWNSPOUTS.

NOTE A:

- REPLACE THE METAL SHEATHING OVER THE CANOPIES (ROOF COVERING AND FLASHING) WITH A VICWEST CL 435 METAL COVERING IN A BROWN COLOUR IDENTICAL TO THE EAST WALL. DIMENSIONS TO BE VERIFIED ON SITE.



NOTES:

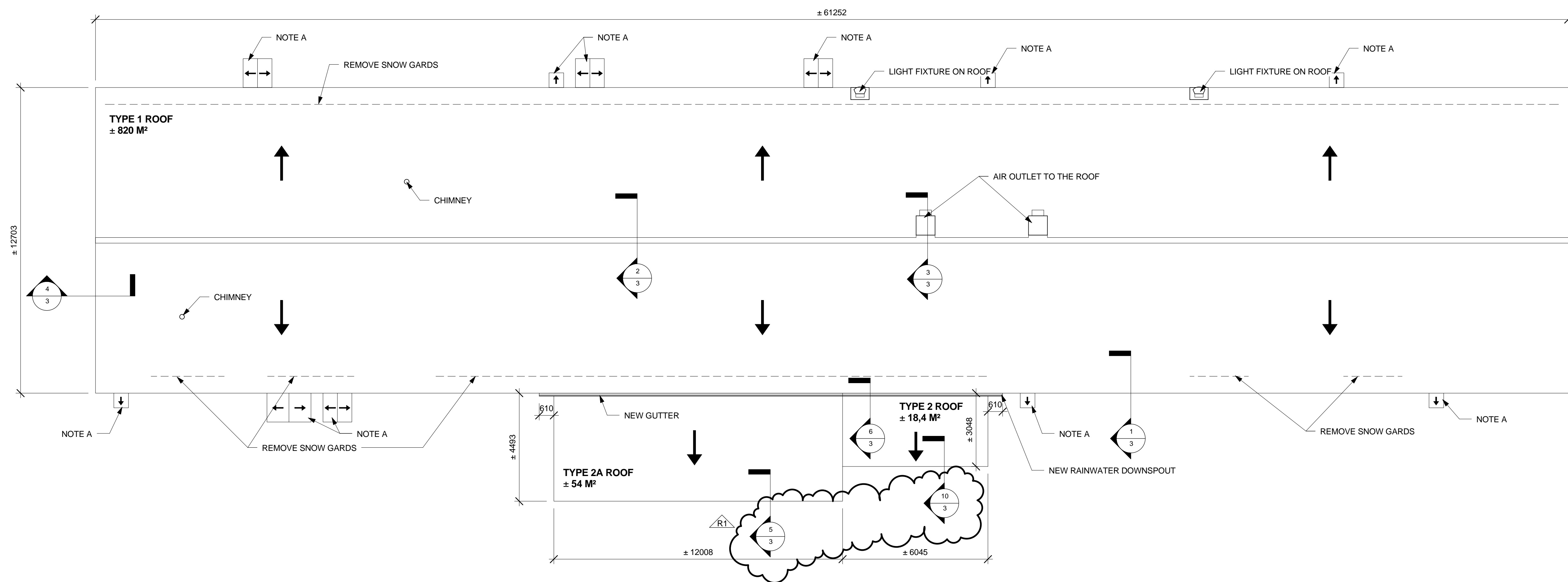
ALL MEASUREMENTS AND DIMENSIONS MUST BE VERIFIED ON SITE UNDER THE GENERAL CONTRACTOR'S SOLE RESPONSIBILITY.

CONTRACTORS MUST HAVE A VERSION OF THE PLANS AT THE SCALE AT WHICH THE DRAWINGS WERE ISSUED BY THE ARCHITECT FOR SUBMISSION OR FOR CONSTRUCTION PURPOSES. CONTRACTORS ARE ALSO RESPONSIBLE FOR TRANSMITTING THE SAID DOCUMENTS TO THEIR SUBCONTRACTORS. CONTRACTORS ARE RESPONSIBLE FOR ERRORS IN MEASUREMENTS TAKEN ON A PDF DOCUMENT.

THESE PLANS WERE DRAFTED IN COMPLIANCE WITH THE ACT RESPECTING THE CONSERVATION OF ENERGY IN BUILDINGS.

COPYRIGHT:

THE ARCHITECT HOLDS COPYRIGHT ON THIS PROJECT AS WELL AS ON THE DRAWINGS, DETAILS, AND SPECIFICATIONS PREPARED BY THE ARCHITECT OR BY PERSONS ON BEHALF OF THE ARCHITECT. THESE DRAWINGS, DETAILS AND SPECIFICATIONS MAY NOT BE DUPLICATED OR MODIFIED TO CARRY OUT ANOTHER PROJECT WITHOUT THE ARCHITECT'S PERMISSION.



MECHANICAL WORKSHOP AND ANNEX ROOF
1 : 100

NO	REVISION	DATE	BY
01	REVISION 1	2016-02-17	J.S.
	FOR TENDER	2016-01-22	J.S.

SEAL

LEGEND

A : DETAIL NUMBER
B : PAGE REFERENCE

ARTCAD
GROUPE CONSEIL INC.

74, Taschereau Street East
Rouyn-Noranda (Qc) J9X 3E4
Tel : 819-797-1429
Fax : 819-797-4927
www.artcad.qc.ca

CONCEIVED BY: J. SIRARD
DRAFTED BY: F. BELLEAU
VERIFIED BY: J. SIRARD
SCALE: INDICATED
DATE: 2016-02-17
FILE NUMBER: 15068-0A01_ENG.RVT

ROOFS - MECHANICAL WORKSHOP AND ANNEX

DO NOT USE FOR CONSTRUCTION

1 / 6

NOTES :
ALL MEASUREMENTS AND DIMENSIONS MUST BE VERIFIED ON SITE UNDER THE GENERAL CONTRACTOR'S SOLE RESPONSIBILITY.

CONTRACTORS MUST HAVE A VERSION OF THE PLANS AT THE SCALE AT WHICH THE DRAWINGS WERE ISSUED BY THE ARCHITECT FOR SUBMISSION OR FOR CONSTRUCTION PURPOSES. CONTRACTORS ARE ALSO RESPONSIBLE FOR TRANSMITTING THE SAID DOCUMENTS TO THEIR SUBCONTRACTORS. CONTRACTORS ARE RESPONSIBLE FOR ERRORS IN MEASUREMENTS TAKEN ON A PDF DOCUMENT.

THESE PLANS WERE DRAFTED IN COMPLIANCE WITH THE ACT RESPECTING THE CONSERVATION OF ENERGY IN BUILDINGS.

COPYRIGHT :
THE ARCHITECT HOLDS COPYRIGHT ON THIS PROJECT AS WELL AS ON THE DRAWINGS, DETAILS, AND SPECIFICATIONS PREPARED BY THE ARCHITECT OR BY PERSONS ON BEHALF OF THE ARCHITECT. THESE DRAWINGS, DETAILS AND SPECIFICATIONS MAY NOT BE DUPLICATED OR MODIFIED TO CARRY OUT ANOTHER PROJECT WITHOUT THE ARCHITECT'S PERMISSION.

NO	REVISION	DATE	BY
01	REVISION 1	2016-02-17	J.S.
	FOR TENDER	2016-01-22	J.S.

SEAL	LEGEND		
	<table border="1"> <tr> <td>A</td> </tr> <tr> <td>B</td> </tr> </table> <p>A : DETAIL NUMBER B : PAGE REFERENCE</p>	A	B
A			
B			

ARTCAD
GROUPE CONSEIL INC.

74, Taschereau Street East
Rouyn-Noranda (Qc) J9X 3E4
Tel : 819-797-1429
Fax : 819-797-4927
www.artcad.qc.ca

CONCEIVED BY: J. SIRARD
DRAFTED BY: F. BELLEAU
VERIFIED BY: J. SIRARD
SCALE: INDICATED
DATE: 2016-02-17
FILE NUMBER: 15068-0A01_ENG.RVT

ROOF - SECONDARY BUILDING

**DO NOT USE FOR
CONSTRUCTION**

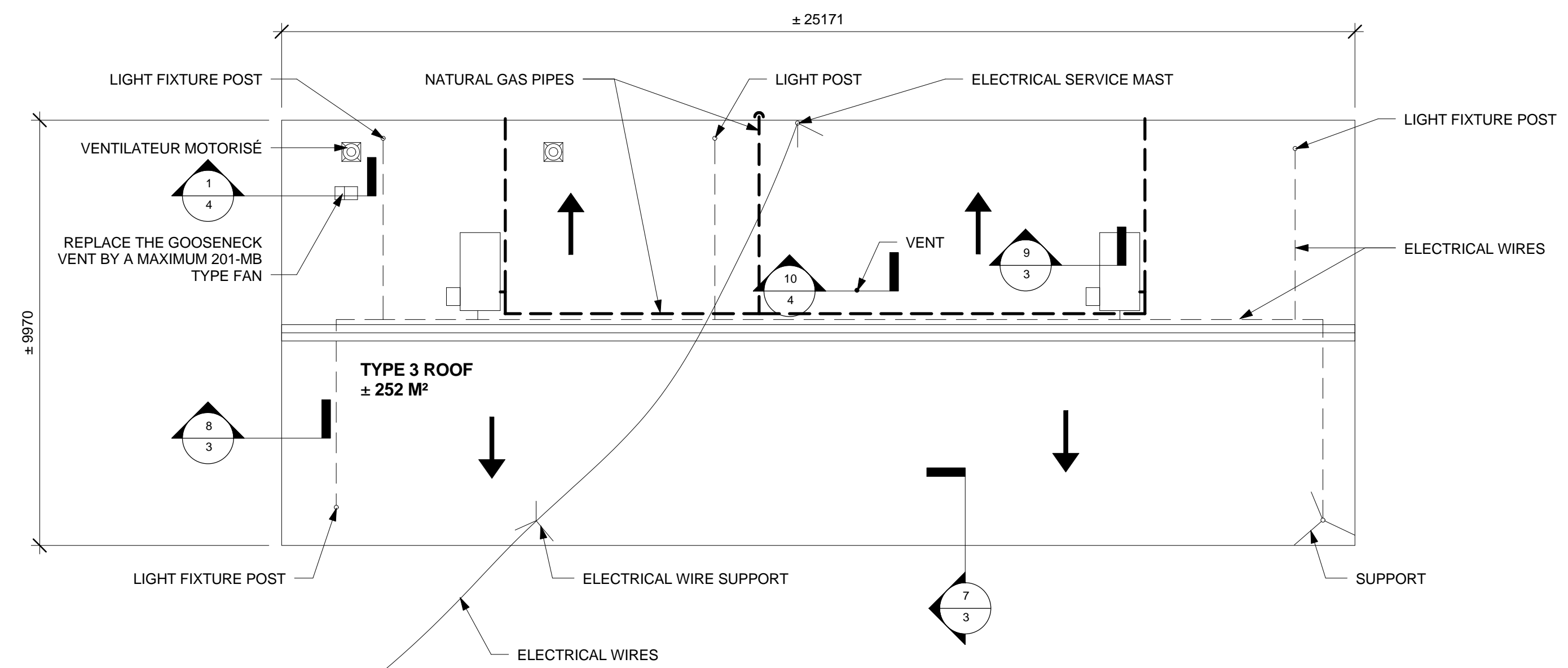
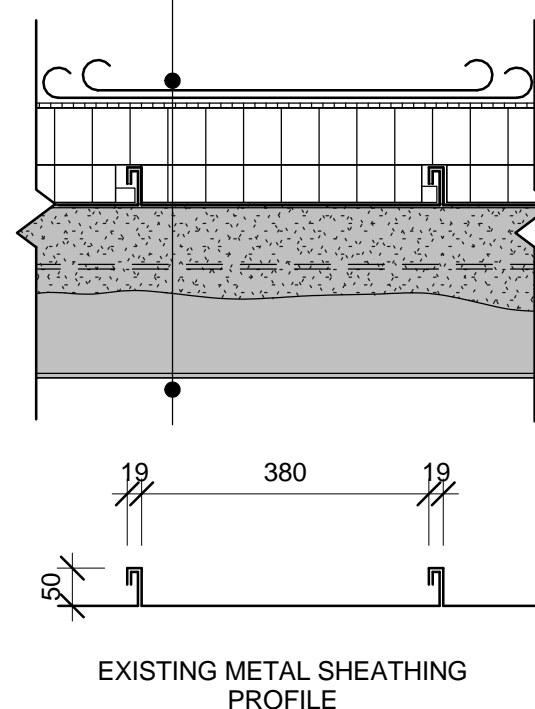
RT

NOTE TYPE 3 ROOF, SECONDARY BUILDING

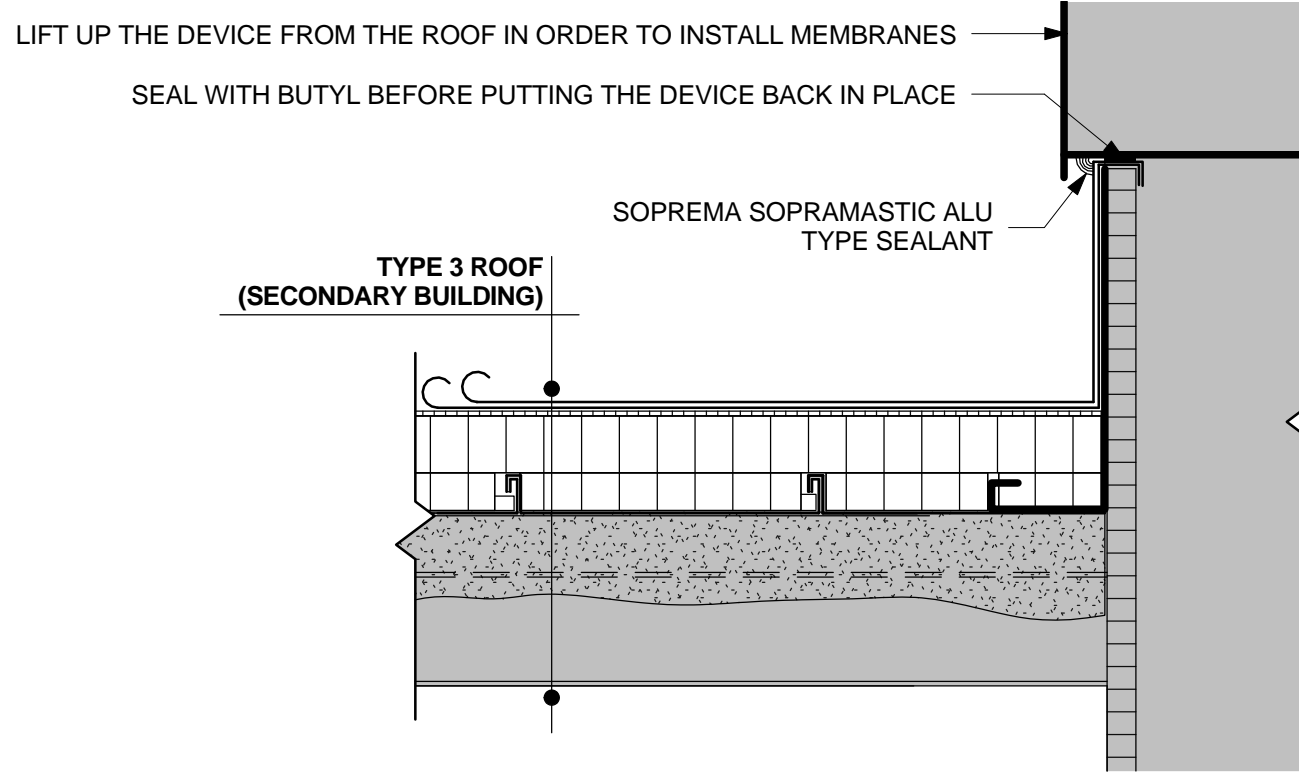
- REMOVE ALL SUPPORTS TO ALLOW WORK TO BE CARRIED OUT; SAND PAINT AND PUT BACK IN PLACE;
- REMOVE ALL LIGHT FIXTURES TO ALLOW WORK TO BE CARRIED OUT; THEN PUT THEM BACK IN PLACE;
- REPLACE THE VENT WITH AN ALUMINUM INSULATED VENT;
- PLAN TO MAKE CHANGES TO THE NATURAL GAS PIPES (THIS WORK MUST BE CARRIED OUT BY AUTHORIZED EMPLOYEES IN ACCORDANCE WITH STANDARDS IN EFFECT). THE MODIFICATION OF THE NATURAL GAS CONDUITS IS LIMITED TO THEIR EXTENSION IN HEIGHT IN ORDER TO PERMIT THE INSERTION OF THE ABOVE MENTIONED CONDUIT SUPPORTS BETWEEN THE CONDUITS AND THE NEW ROOFING SURFACE.
- PLAN FOR RELOCATION OF ELECTRICAL WIRES;
- REPLACE THE GOOSNECK VENT WITH A MAXIMUM 201-MB TYPE FAN.

TYPE 3 ROOF - SECONDARY BUILDING

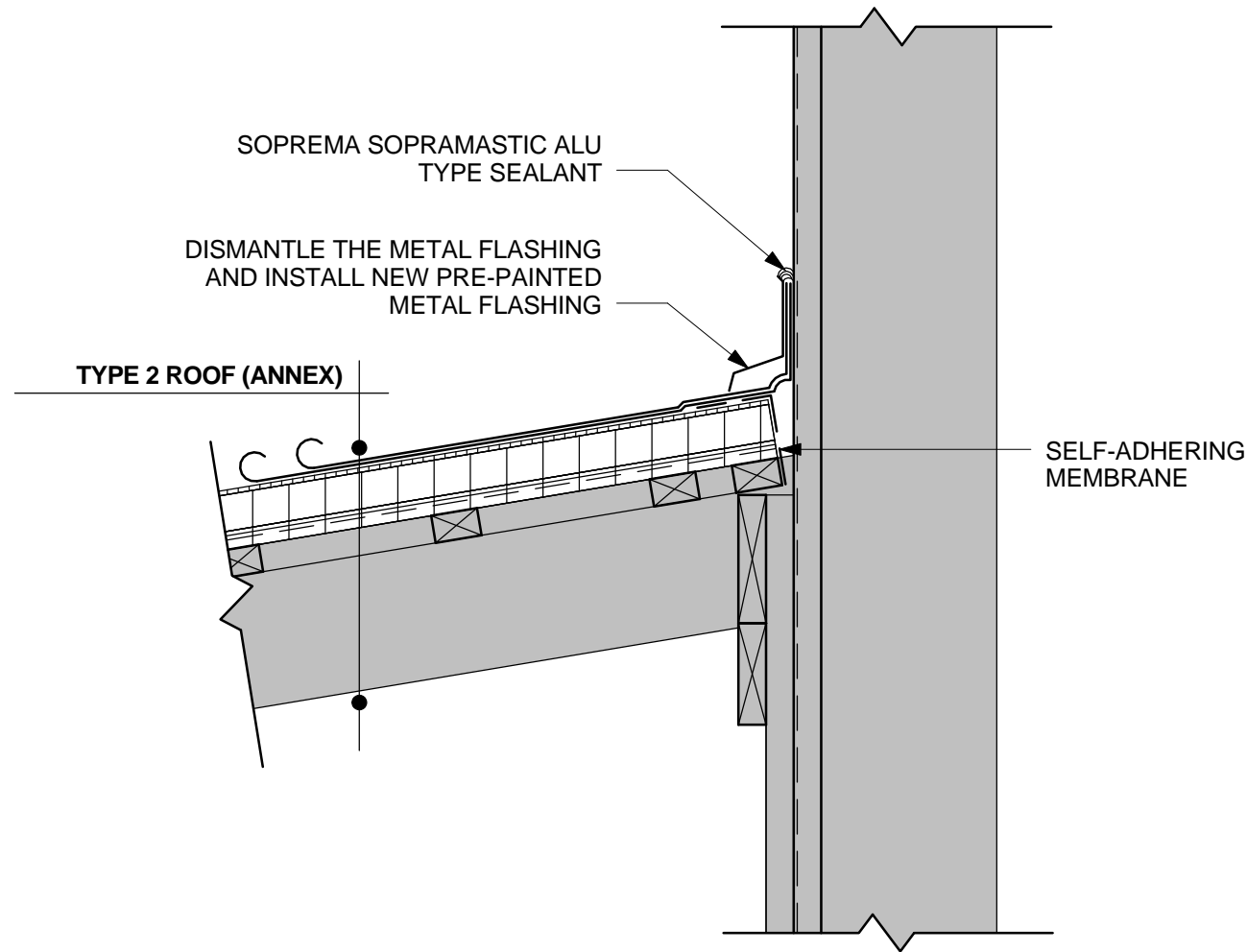
- ELASTOMERIC SURFACE MEMBRANE
- ELASTOMERIC SUBLAYER
- 6.4-mm ASPHALT PANEL
- 75-mm RIGID INSULATION
- PRESHAPED RIGID INSULATION (INSERTED IN THE EXISTING METAL SHEATHING PROFILE)
- EXISTING METAL SHEATHING
- EXISTING SPRAY-APPLIED URETHANE



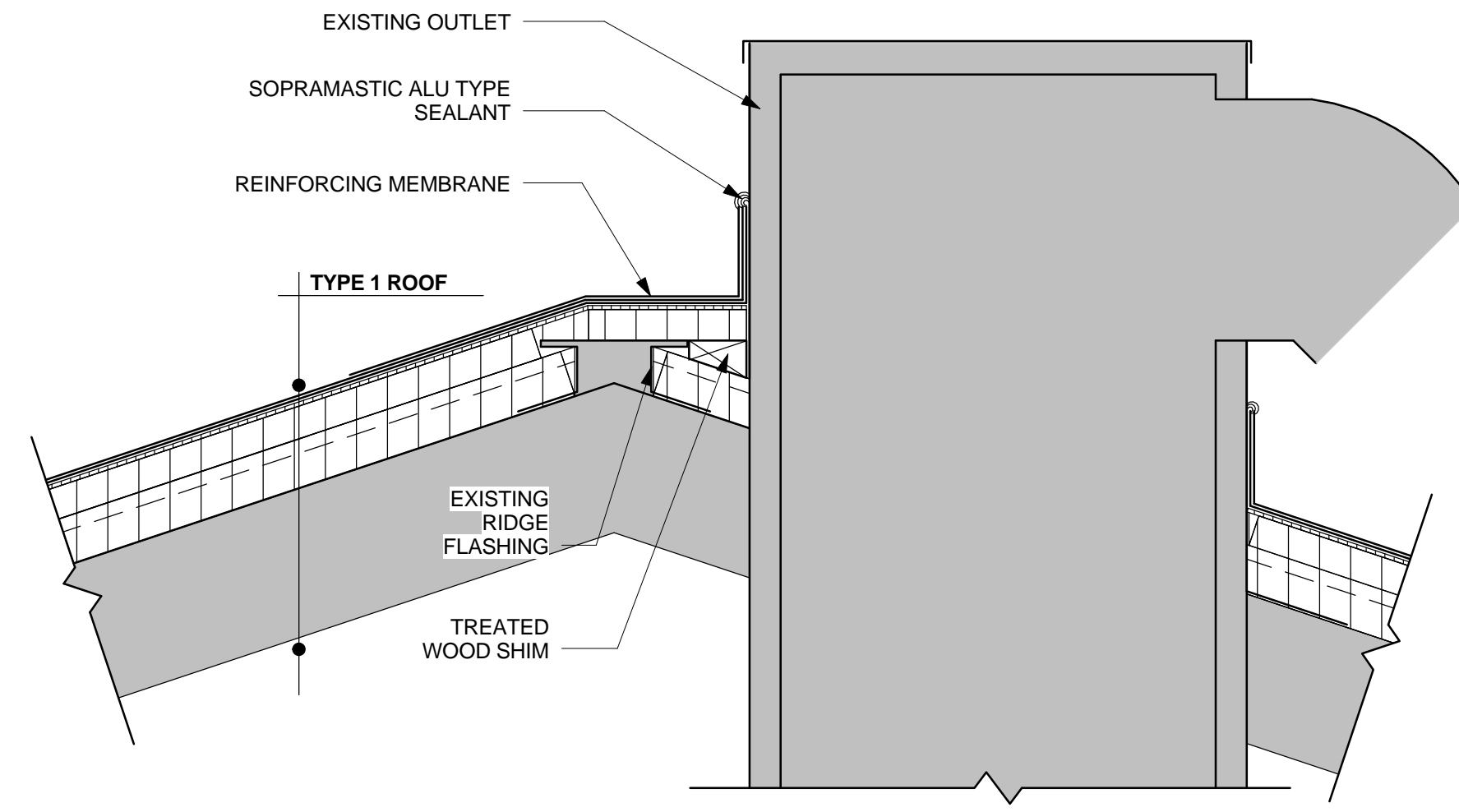
ROOF - SECONDARY BUILDING
1 : 100



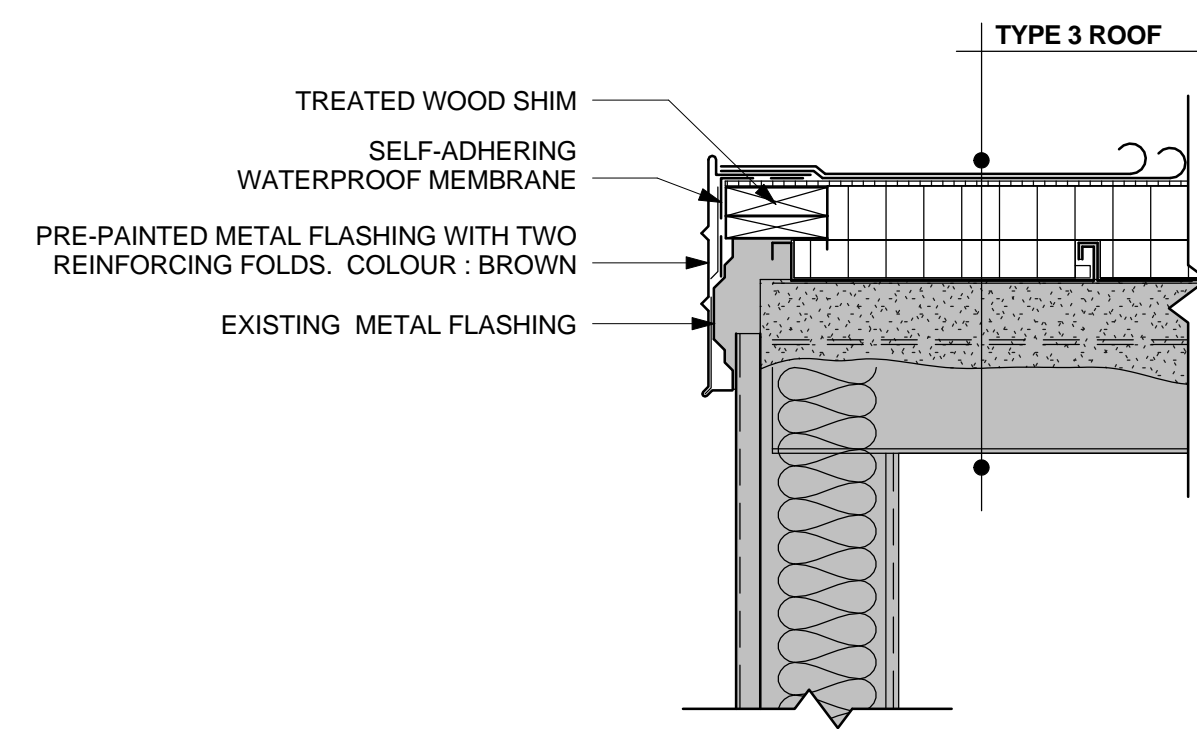
9
2 1:10
TYPICAL SECTION 9



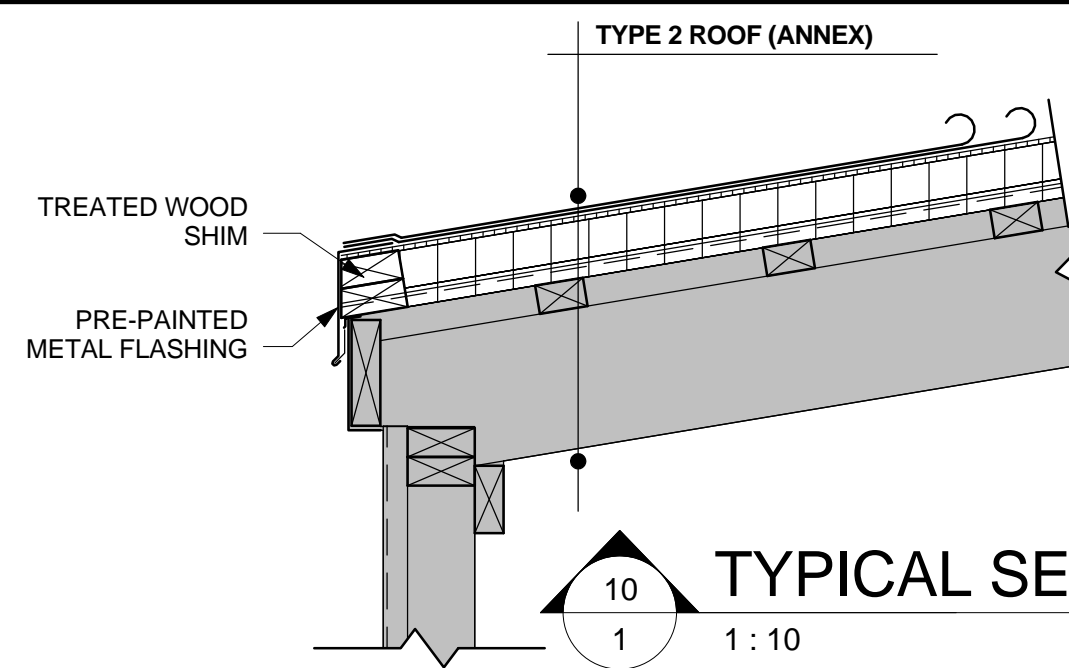
6
1 1:10
TYPICAL SECTION 6



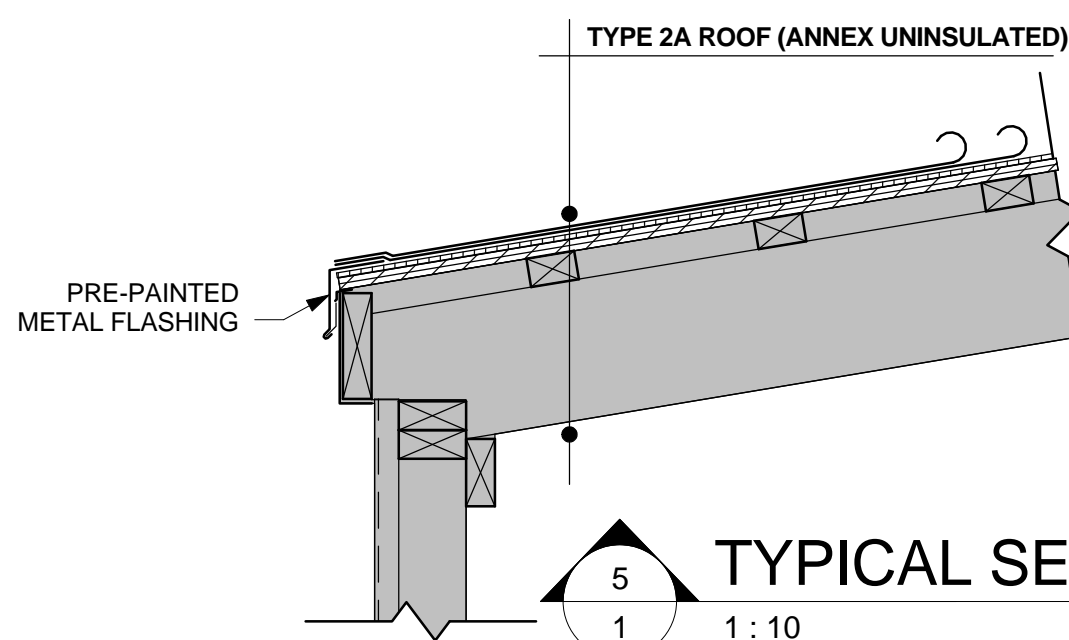
3
1 1:10
TYPICAL SECTION 3



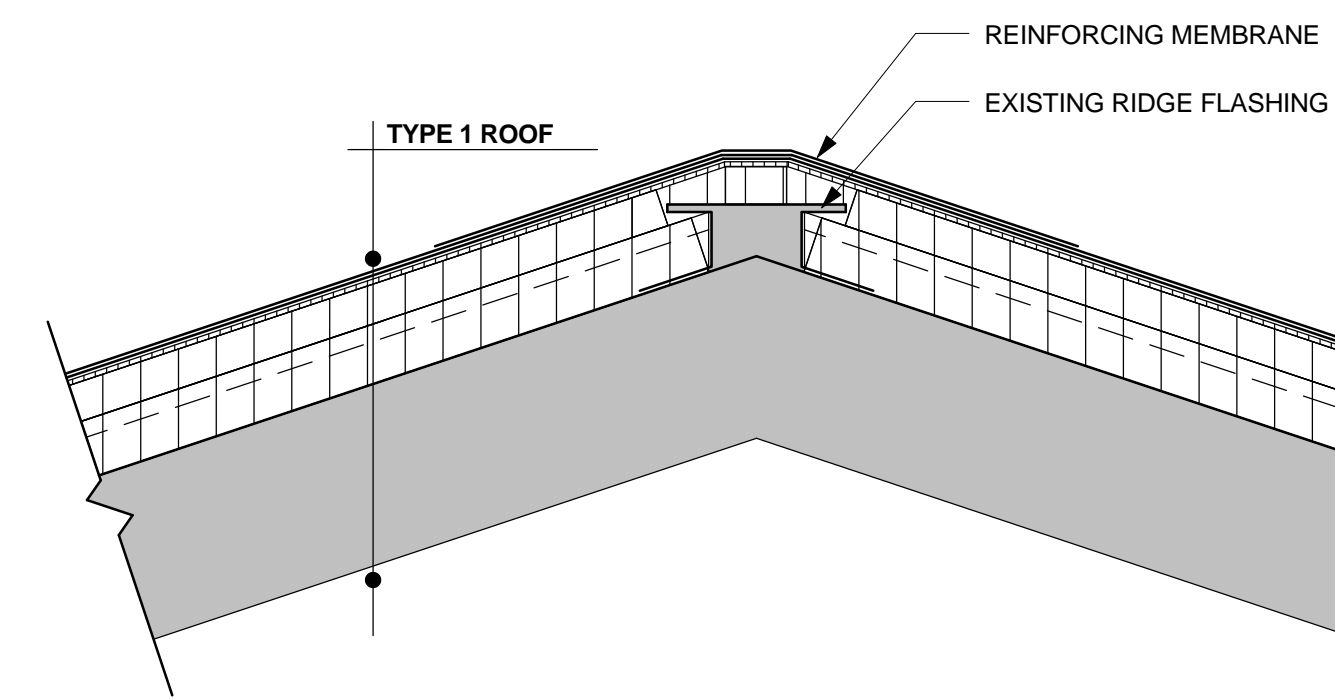
8
2 1:10
TYPICAL SECTION 8



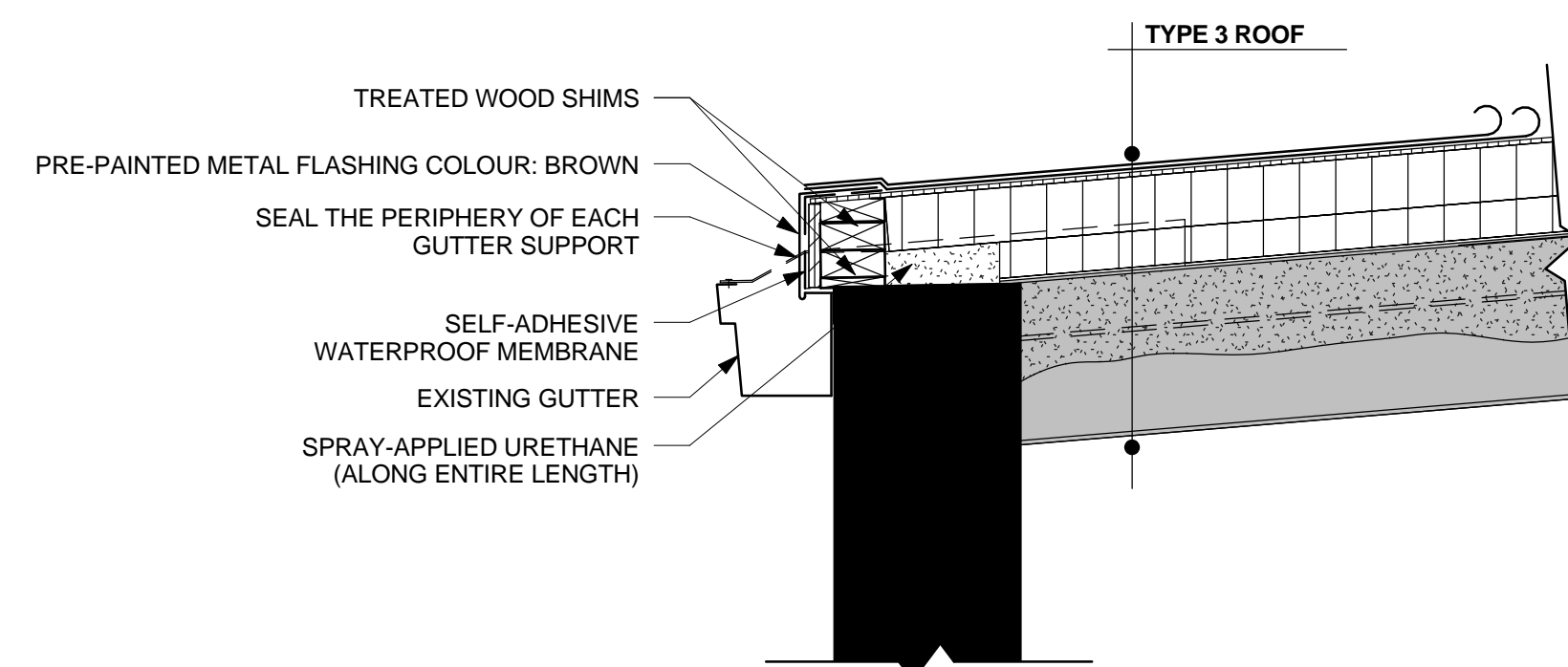
10
1 1:10
TYPICAL SECTION 5b



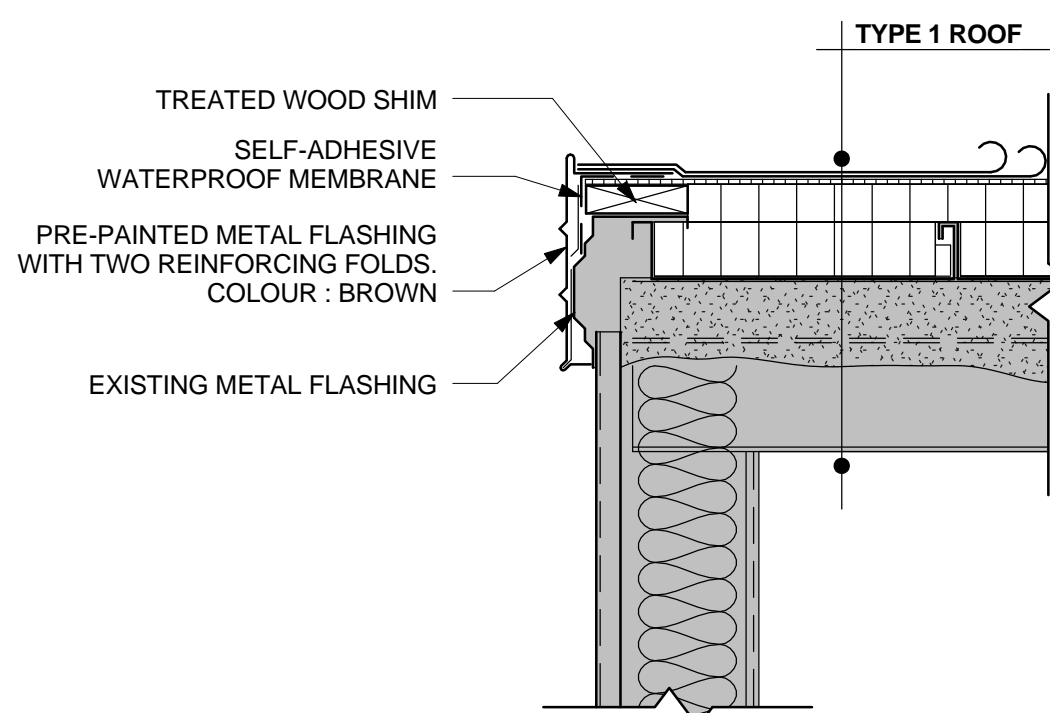
5
1 1:10
TYPICAL SECTION 5a



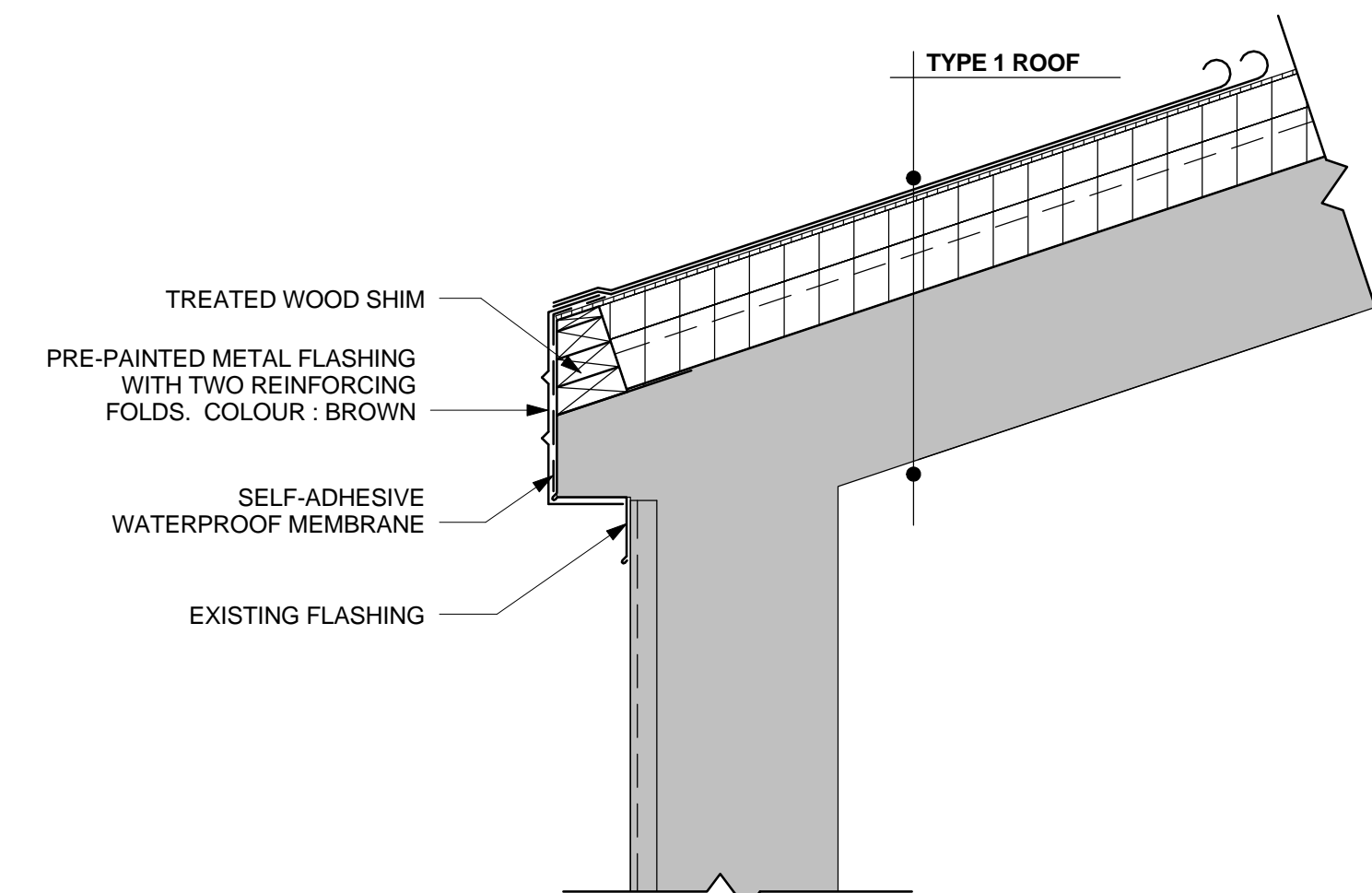
2
1 1:10
TYPICAL SECTION 2



7
2 1:10
TYPICAL SECTION 7



4
1 1:10
TYPICAL SECTION 4



1
1 1:10
TYPICAL SECTION 1

NOTES : ALL MEASUREMENTS AND DIMENSIONS MUST BE VERIFIED ON SITE UNDER THE GENERAL CONTRACTOR'S SOLE RESPONSIBILITY.

CONTRACTORS MUST HAVE A VERSION OF THE PLANS AT THE SCALE AT WHICH THE DRAWINGS WERE ISSUED BY THE ARCHITECT FOR SUBMISSION OR FOR CONSTRUCTION PURPOSES. CONTRACTORS ARE ALSO RESPONSIBLE FOR TRANSMITTING THE SAID DOCUMENTS TO THEIR SUBCONTRACTORS. CONTRACTORS ARE RESPONSIBLE FOR ERRORS IN MEASUREMENTS TAKEN ON A PDF DOCUMENT.

THESE PLANS WERE DRAFTED IN COMPLIANCE WITH THE ACT RESPECTING THE CONSERVATION OF ENERGY IN BUILDINGS.

COPYRIGHT : THE ARCHITECT HOLDS COPYRIGHT ON THIS PROJECT AS WELL AS ON THE DRAWINGS, DETAILS, AND SPECIFICATIONS PREPARED BY THE ARCHITECT OR BY PERSONS ON BEHALF OF THE ARCHITECT. THESE DRAWINGS, DETAILS AND SPECIFICATIONS MAY NOT BE DUPLICATED OR MODIFIED TO CARRY OUT ANOTHER PROJECT WITHOUT THE ARCHITECT'S PERMISSION.

NO	REVISION	DATE	BY
01	REVISION 1	2016-02-17	J.S.
	FOR TENDER	2016-01-22	J.S.

	LEGEND
	<p>A : DETAIL NUMBER</p> <p>B : PAGE REFERENCE</p>

ARTCAD
GROUPE CONSEIL INC.

74, Taschereau Street East
Rouyn-Noranda (Qc) J9X 3E4
Tel. : 819-797-1429
Fax : 819-797-4927
www.artcad.qc.ca

CONCEIVED BY: J. SIRARD
DRAFTED BY: F. BELLEAU
VERIFIED BY: J. SIRARD
SCALE: INDICATED
DATE: 2016-02-17
FILE NUMBER: 15068-0A01_ENG.RVT

TYPICAL DETAILS

DO NOT USE FOR CONSTRUCTION



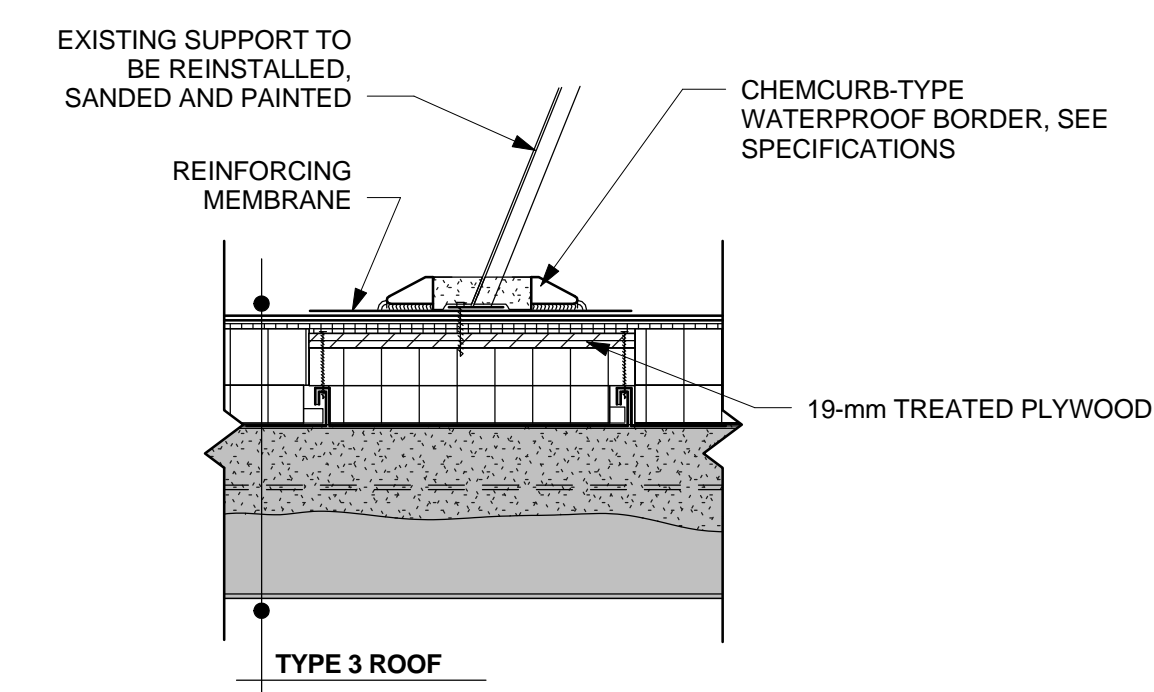
SECONDARY BUILDING



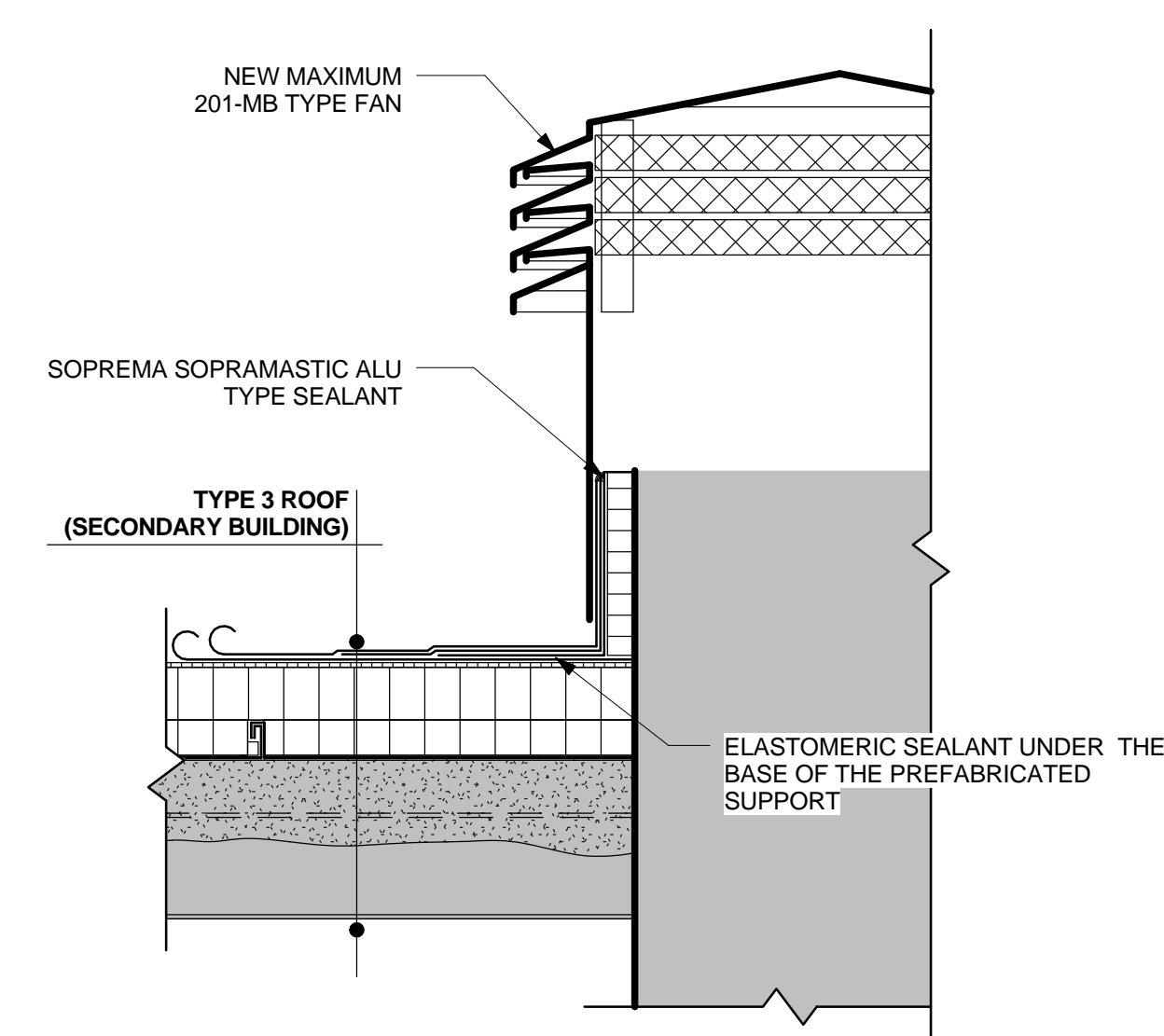
ANNEX



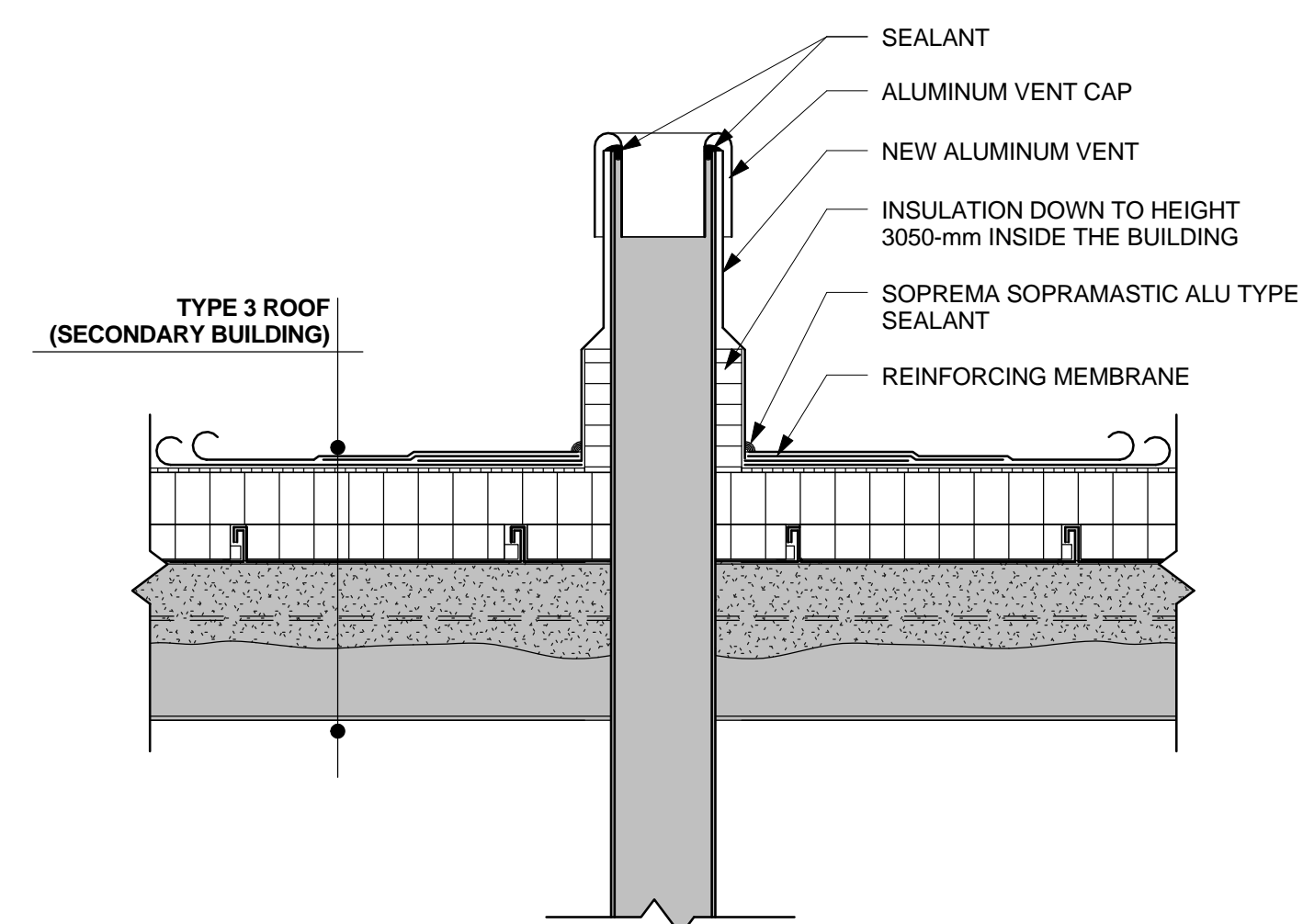
MECHANICAL WORKSHOP



2 SUPPORTS DETAIL
1:10



1 FAN DETAIL
2 1:10



10 VENT DETAIL
2 1:10

NOTES : ALL MEASUREMENTS AND DIMENSIONS MUST BE VERIFIED ON SITE UNDER THE GENERAL CONTRACTOR'S SOLE RESPONSIBILITY.

CONTRACTORS MUST HAVE A VERSION OF THE PLANS AT THE SCALE AT WHICH THE DRAWINGS WERE ISSUED BY THE ARCHITECT FOR SUBMISSION OR FOR CONSTRUCTION PURPOSES. CONTRACTORS ARE ALSO RESPONSIBLE FOR TRANSMITTING THE SAID DOCUMENTS TO THEIR SUBCONTRACTORS. CONTRACTORS ARE RESPONSIBLE FOR ERRORS IN MEASUREMENTS TAKEN ON A PDF DOCUMENT.

THESE PLANS WERE DRAFTED IN COMPLIANCE WITH THE ACT RESPECTING THE CONSERVATION OF ENERGY IN BUILDINGS.

COPYRIGHT : THE ARCHITECT HOLDS COPYRIGHT ON THIS PROJECT AS WELL AS ON THE DRAWINGS, DETAILS, AND SPECIFICATIONS PREPARED BY THE ARCHITECT OR BY PERSONS ON BEHALF OF THE ARCHITECT. THESE DRAWINGS, DETAILS AND SPECIFICATIONS MAY NOT BE DUPLICATED OR MODIFIED TO CARRY OUT ANOTHER PROJECT WITHOUT THE ARCHITECT'S PERMISSION.

NO	REVISION	DATE	BY
R1	REVISION 1	2016-02-17	J.S.
01	FOR TENDER	2016-01-22	J.S.

SEAL	LEGEND
	<p>A B</p> <p>A : DETAIL NUMBER B : PAGE REFERENCE</p>

ARTCAD
GROUPE CONSEIL INC.

74, Taschereau Street East
Rouyn-Noranda (Qc) J9X 3E4
Tel : 819-797-1429
Fax : 819-797-4927
www.artcad.qc.ca

CONCEIVED BY: J. SIRARD
DRAFTED BY: F. BELLEAU
VERIFIED BY: J. SIRARD
SCALE: INDICATED
DATE: 2016-02-17
FILE NUMBER: 15068-0A01_ENG.RVT

TYPICAL DETAILS

DO NOT USE FOR CONSTRUCTION



NOTES :
ALL MEASUREMENTS AND DIMENSIONS MUST BE VERIFIED ON SITE UNDER THE GENERAL CONTRACTOR'S SOLE RESPONSIBILITY.

CONTRACTORS MUST HAVE A VERSION OF THE PLANS AT THE SCALE AT WHICH THE DRAWINGS WERE ISSUED BY THE ARCHITECT FOR SUBMISSION OR FOR CONSTRUCTION PURPOSES. CONTRACTORS ARE ALSO RESPONSIBLE FOR TRANSMITTING THE SAID DOCUMENTS TO THEIR SUBCONTRACTORS. CONTRACTORS ARE RESPONSIBLE FOR ERRORS IN MEASUREMENTS TAKEN ON A PDF DOCUMENT.

THESE PLANS WERE DRAFTED IN COMPLIANCE WITH THE ACT RESPECTING THE CONSERVATION OF ENERGY IN BUILDINGS.

COPYRIGHT :
THE ARCHITECT HOLDS COPYRIGHT ON THIS PROJECT AS WELL AS ON THE DRAWINGS, DETAILS, AND SPECIFICATIONS PREPARED BY THE ARCHITECT OR BY PERSONS ON BEHALF OF THE ARCHITECT. THESE DRAWINGS, DETAILS AND SPECIFICATIONS MAY NOT BE DUPLICATED OR MODIFIED TO CARRY OUT ANOTHER PROJECT WITHOUT THE ARCHITECT'S PERMISSION.

NO	REVIEW	DATE	BY
R1	REVISION 1	2016-02-17	J.S.
01	FOR TENDER	2016-01-22	J.S.

	<p>LEGEND</p> <p>A : DETAIL NUMBER</p> <p>B : PAGE REFERENCE</p>
--	--

ARTCAD
GROUPE CONSEIL INC.

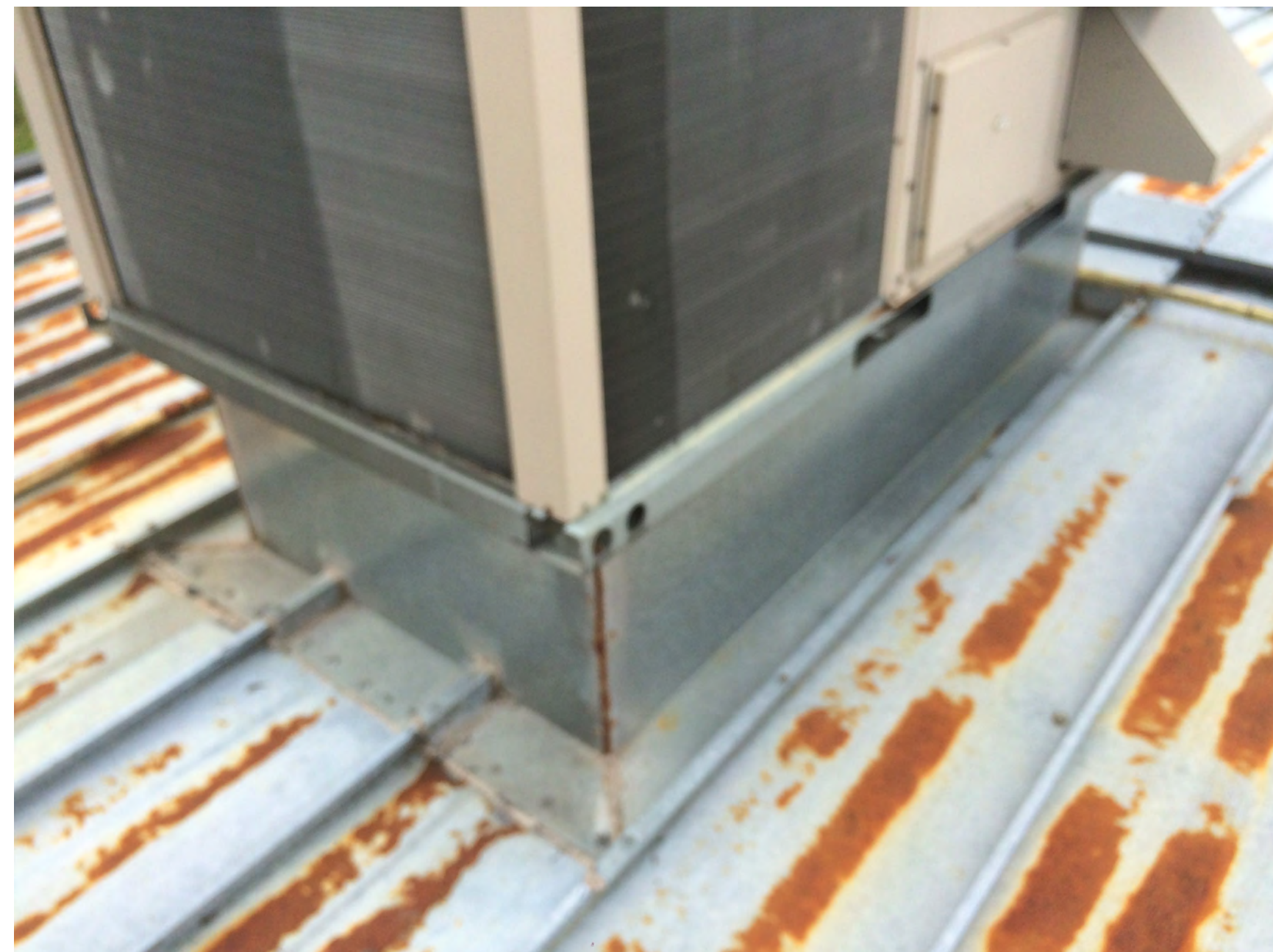
74, Taschereau Street East
Rouyn-Noranda (Qc) J9X 3E4
Tel. : 819-797-1429
Fax : 819-797-4927
www.artcad.qc.ca

CONCEIVED BY: J. SIRARD
DRAFTED BY: F. BELLEAU
VERIFIED BY: J. SIRARD
SCALE: INDICATED
DATE: 2016-02-17
FILE NUMBER: 15068-0A01_ENG.RVT

MECHANICAL
WORKSHOP AND
ANNEX PHOTOS

**DO NOT USE FOR
CONSTRUCTION**

5
6



NOTES :
ALL MEASUREMENTS AND DIMENSIONS MUST BE VERIFIED ON SITE UNDER THE GENERAL CONTRACTOR'S SOLE RESPONSIBILITY.

CONTRACTORS MUST HAVE A VERSION OF THE PLANS AT THE SCALE AT WHICH THE DRAWINGS WERE ISSUED BY THE ARCHITECT FOR SUBMISSION OR FOR CONSTRUCTION PURPOSES. CONTRACTORS ARE ALSO RESPONSIBLE FOR TRANSMITTING THE SAID DOCUMENTS TO THEIR SUBCONTRACTORS. CONTRACTORS ARE RESPONSIBLE FOR ERRORS IN MEASUREMENTS TAKEN ON A PDF DOCUMENT.

THESE PLANS WERE DRAFTED IN COMPLIANCE WITH THE ACT RESPECTING THE CONSERVATION OF ENERGY IN BUILDINGS.

COPYRIGHT :
THE ARCHITECT HOLDS COPYRIGHT ON THIS PROJECT AS WELL AS ON THE DRAWINGS, DETAILS, AND SPECIFICATIONS PREPARED BY THE ARCHITECT OR BY PERSONS ON BEHALF OF THE ARCHITECT. THESE DRAWINGS, DETAILS AND SPECIFICATIONS MAY NOT BE DUPLICATED OR MODIFIED TO CARRY OUT ANOTHER PROJECT WITHOUT THE ARCHITECT'S PERMISSION.

NO	REVIEW	DATE	BY
R1	REVISION 1	2016-02-17	J.S.
01	FOR TENDER	2016-01-22	J.S.

	LEGEND			
	<table border="1"> <tr> <td>A</td> <td>DETAIL NUMBER</td> </tr> <tr> <td>B</td> <td>PAGE REFERENCE</td> </tr> </table>	A	DETAIL NUMBER	B
A	DETAIL NUMBER			
B	PAGE REFERENCE			

ARTCAD
GROUPE CONSEIL INC.

74, Taschereau Street East
Rouyn-Noranda (Qc) J9X 3E4
Tel : 819-797-1429
Fax : 819-797-4927
www.artcad.qc.ca

CONCEIVED BY: J. SIRARD
DRAFTED BY: F. BELLEAU
VERIFIED BY: J. SIRARD
SCALE: INDICATED
DATE: 2016-02-17
FILE NUMBER: 15068-0A01_ENG.RVT

**SECONDARY
BUILDING PHOTOS**

**DO NOT USE FOR
CONSTRUCTION**