

SOFT LANDSCAPING

- 75mm DEEP WOOD CHIP MULCH PLANTING BED
- RIVER ROCK
- SOD
- SEED
- CONCRETE SIDEWALK
- CONCRETE PAVING

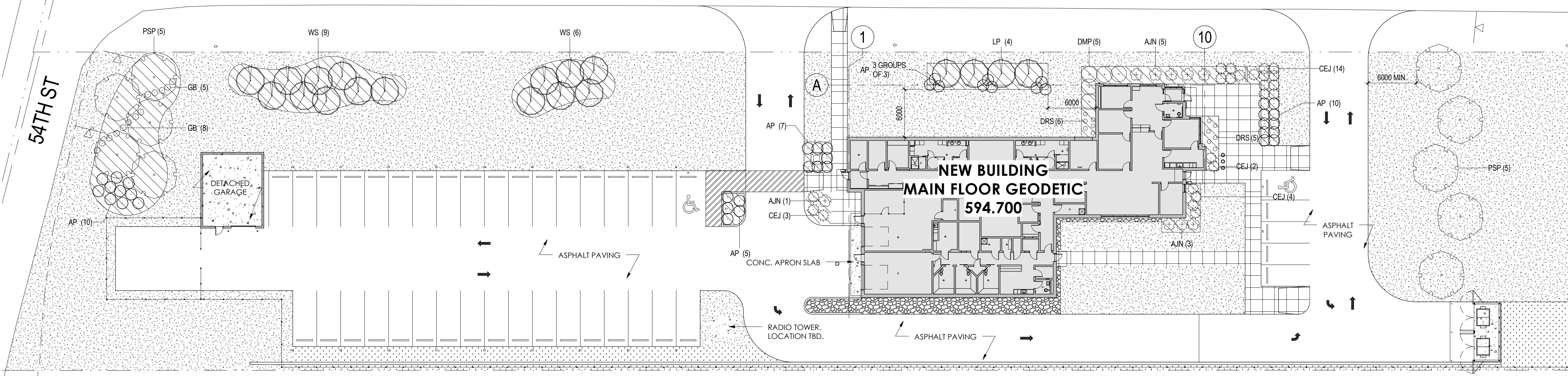
TREE LEGEND

- Prairie Sky Poplar (*Populus x canadensis* 'Prairie Sky')
- Russian Mountain Ash (*Sorbus aucuparia* 'Rossica')
- Lodgepole Pine (*Pinus contorta latifolia*)
- White Spruce (*Picea pungens*)

SHRUB LEGEND

- Abbottwood Potentilla (*Potentilla fruticosa* 'Abbottwood')
- Amber Jubilee Ninebark (*Physocarpus opulifolius* 'Jefam')
- Darts Red Spirea (*Spiraea x bumalda* 'Darts Red')
- Gooseberry (*Ribes hirtellum*)
- Dwarf Mugo Pine (*Pinus mugo* 'Pumilio')
- Common Effusa Juniper (*Juniperus communis* 'Effusa')

RAILWAY AVE



1 LANDSCAPE PLAN

L101 1:300

LANDSCAPE - GENERAL NOTES

1. CONTRACTOR IS RESPONSIBLE TO CONFIRM THE LOCATION OF ALL UTILITIES ON SITE PRIOR TO CONSTRUCTION.
2. CONFIRM ALL CONDITIONS AND DIMENSIONS ON SITE PRIOR TO COMMENCEMENT OF WORK.
3. ALL DIMENSIONS ARE IN METRES UNLESS OTHERWISE NOTED.
4. WRITTEN DIMENSIONS TAKE PRECEDENCE OVER SCALED DIMENSIONS.

LANDSCAPE - GOOD HOUSEKEEPING PRACTICE

GOOD HOUSE KEEPING PRACTICES WILL HELP MINIMIZE EROSION AND SEDIMENT CONCERNS. GOODHOUSE KEEPING PRACTICES THAT WILL BE IMPLEMENTED ON SITE ARE AS FOLLOWS:

STOCKPILES SHOULD BE LOCATED AWAY FROM WATERCOURSES, ENVIRONMENTALLY SENSITIVE AREAS, DRAINAGE COURSES, RAVINES, AND EXISTING ADJACENT DEVELOPMENTS. THE STOCKPILES SHOULD BE STABILIZED AGAINST EROSION IMMEDIATELY FOLLOWING STRIPPING OPERATIONS. STABILIZATION CAN INCLUDE, BUT IS NOT LIMITED TO, ESTABLISHMENT OF A COVER CROP OR A HYDROSEED MATRIX, CONSISTING OF SEED, FIBER BOND, AND TACKIFIER.

ALL CONSTRUCTION VEHICLES SHOULD LEAVE THE SITE AT A DESIGNATED POINT OR POINTS. GRAVELING OR PAVING (WHERE PRACTICAL) OF FREQUENTLY USED ACCESS ROADS WILL HELP ENSURE THAT MINIMAL MATERIAL SUCH AS MUD IS TRACKED OFF-SITE. THE ACCESS ROAD SHOULD CONSIST OF A BED OF NON-ERODABLE MATERIAL (I.E. GRAVEL) OF SUFFICIENT LENGTH TO ENSURE THAT A MINIMUM OF MATERIAL (MUD) IS TRACKED OFF-SITE ONTO ADJACENT MUNICIPAL STREETS. INTERNAL HAUL ROADS AND/OR TRACK PACKS CAN ALSO BE DESIGNATED AND MAINTAINED TO HELP REDUCE OFF-SITE TRACKING. IN SITUATIONS WHERE MUD TRACKING BECOMES A MAJOR PROBLEM, A HIGH-PRESSURE PUMP AND HOSE INSTALLATION MAY BE USED TO PROVIDE A WASHDOWN FACILITY FOR TRUCK WHEELS.

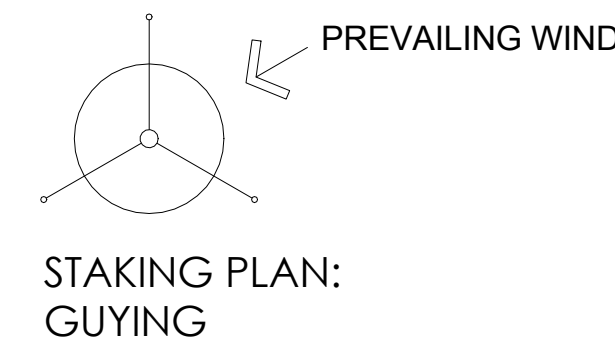
WHEN SEWERS HAVE BEEN INSTALLED OR ARE EXISTING, MEASURES SHOULD BE UNDERTAKEN TO ENSURE SEDIMENT AND DEBRIS DOES NOT GET INTO THE MUNICIPAL SEWER SYSTEM. BOTH CATCH BASINS AND MANHOLES SHOULD BE PROTECTED. THIS MAY BE ACCOMPLISHED BY SEALING OPENINGS, SETTING UP SUMPS OR WEIRS INSIDE THE STRUCTURES OR BY PROVIDING APPROPRIATE INLET PROTECTION (FILTER FENCES, SEDIMENT TRAPS, ETC.). A TEMPORARY DRAINAGE SYSTEM SHOULD BE USED WITH APPROPRIATE VELOCITY CONTROLS AND TEMPORARY STORAGE AREAS FOR SEDIMENT CONTROL. THIS WILL ENSURE THAT SEDIMENT AND DEBRIS DO NOT GET INTO THE MUNICIPAL SEWER SYSTEM AND INTO THE DOWNSTREAM WATERWAYS. DILIGENT EFFORTS MUST BE UNDERTAKEN TO ENSURE THAT THE TEMPORARY DRAINAGE SYSTEM DOES NOT FLOOD ADJACENT PROPERTIES.

WHERE ON-SITE OR DOWNSTREAM DETENTION FACILITIES ARE PROVIDED, USE CAN BE MADE OF A QUANTITY CONTROL FACILITY (THROUGH THE PLACING OF TEMPORARY WEIRS OR CHECK DAMS) FOR SEDIMENT CONTROL DURING CONSTRUCTION.

DUST CONTROL MEASURES SHOULD BE IMPLEMENTED TO PREVENT WIND TRANSPORTATION OF DUST FROM DISTURBED SOIL SURFACES. THIS MAY BE ACCOMPLISHED SEVERAL WAYS. VEGETATE, HYDROSEED, OR MULCH AREAS THAT WON'T RECEIVE VEHICLE TRAFFIC. OTHERWISE CONSTRUCT WIND BREAKS OR SCREENS. THE SITE MAY ALSO BE SPRINKLED WITH WATER OR A CHEMICAL DUST SUPPRESSANT TO CONTROL DUST. HOWEVER, CARE MUST BE TAKEN TO PREVENT THE TRACKING OF MUD AS A RESULT. OTHERWISE, ANOTHER EFFECTIVE TOOL IS TO REDUCE VEHICLE SPEEDS TO DECREASE THE AMOUNT OF DUST STIRRED UP.

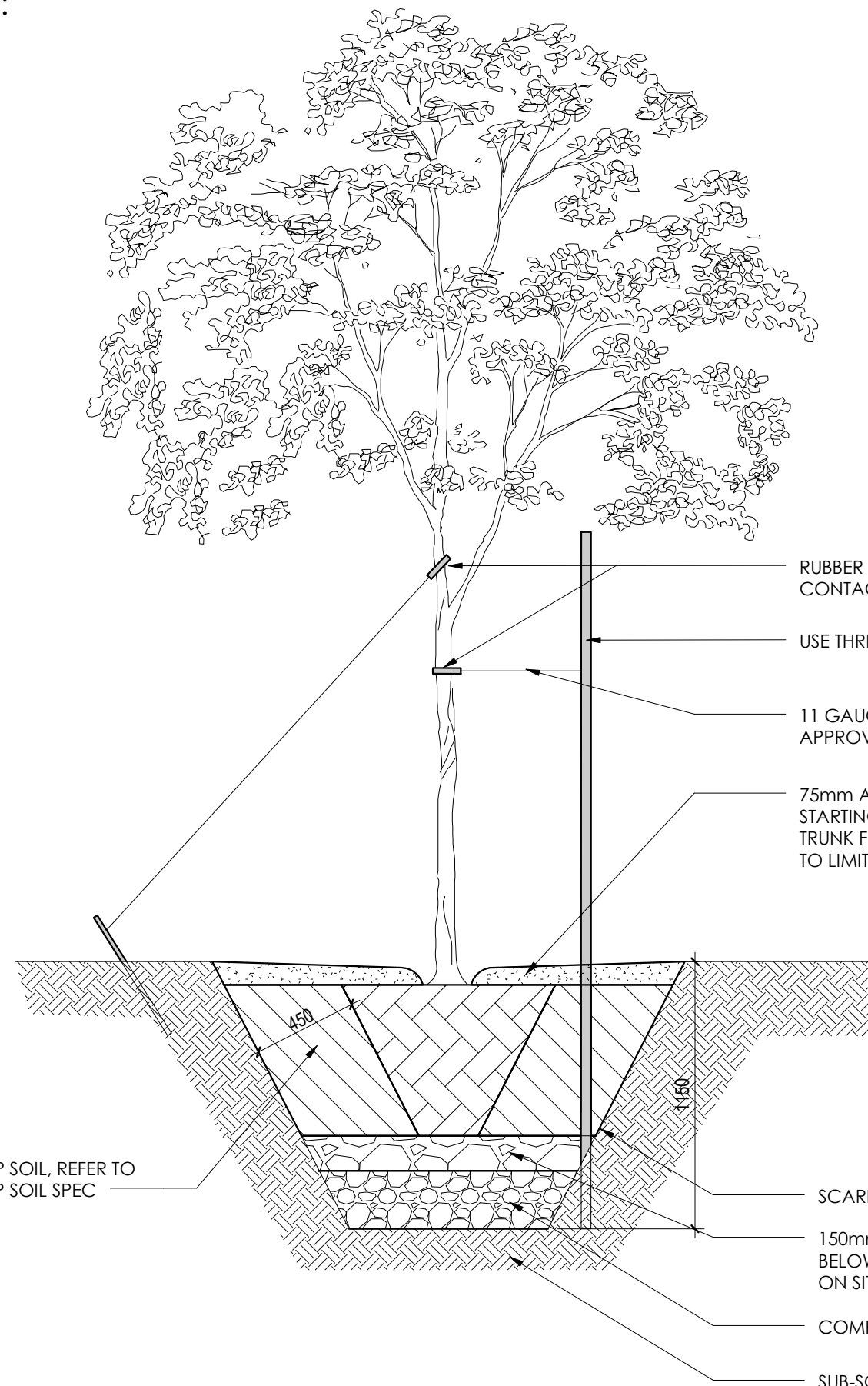
PLANTING SCHEDULE

QUANTITY	NAME	SIZE	REMARKS
10	PSP - Prairie Sky Poplar ( <i>Populus x canadensis</i> 'Prairie Sky')	60 mm cal.	B&B
5	RMA - Russian Mountain Ash ( <i>Sorbus aucuparia</i> 'Rossica')	65 mm cal.	B&B
4	LP - Lodgepole Pine ( <i>Pinus contorta latifolia</i> )	2.5 M Height	B&B
15	WS - White Spruce ( <i>Picea pungens</i> )	2.0 M Height	B&B
41	AP - Abbottwood Potentilla ( <i>Potentilla fruticosa</i> 'Abbottwood')	#5 container	500mm spread
9	AJN - Amber Jubilee Ninebark ( <i>Physocarpus opulifolius</i> 'Jefam')	#5 container	600MM spread
12	DRS - Darts Red Spirea ( <i>Spiraea x bumalda</i> 'Darts Red')	#2 container	400MM spread
14	GB - Gooseberry ( <i>Ribes hirtellum</i> )	#2 container	400MM spread
5	DMP - Dwarf Mugo Pine ( <i>Pinus mugo</i> 'Pumilio')	#7 container	600MM spread
23	CEJ - Common Effusa Juniper ( <i>Juniperus communis</i> 'Effusa')	#5 container	500mm spread



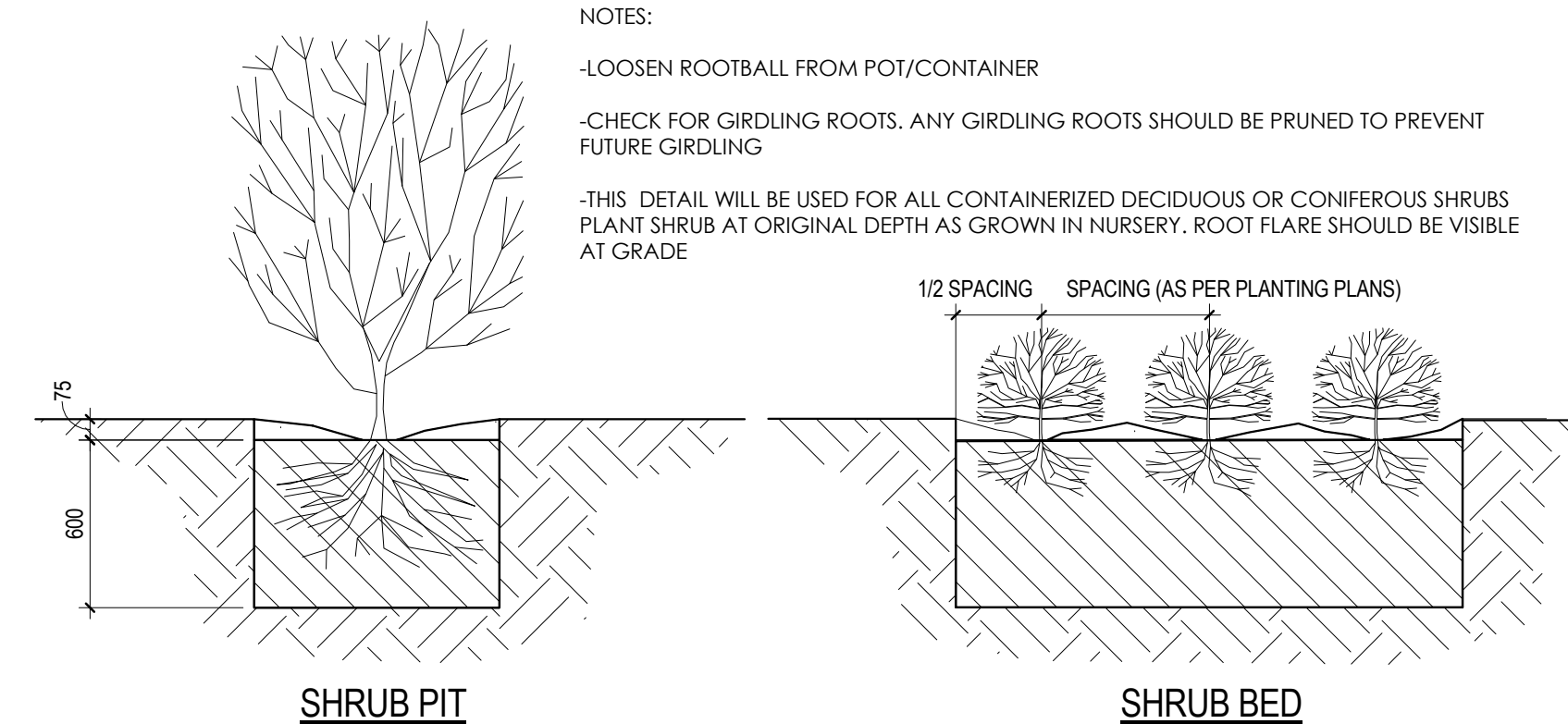
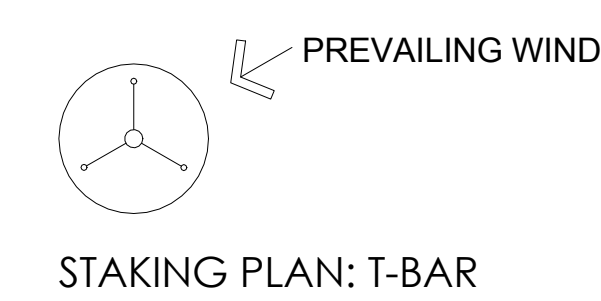
NOTES:

- CHECK FOR GIRDLING ROOTS. ANY GIRDLING ROOTS SHOULD BE PRUNED TO PREVENT FUTURE GIRDLING.
- PRUNE BROKEN AND FRAYED ROOT ENDS WITH SECATEURS.
- HOLD TRUNK VERTICAL. BACKFILL AROUND ROOTS WITH TOPSOIL. CONTINUOUSLY PACKING THE SOIL UNTIL FIRM.
- TREE SHOULD BE PLANTED THE SAME ORIGINAL GROWING DEPTH AS IN NURSERY. TRUNK FLARE SHOULD BE VISIBLE AT GRADE.
- IF TREE IS IN A WIRE BASKET, CUT AND REMOVE STRAPPING AND THE HORIZONTAL/VERTICAL WIRES OF THE WIRE BASKET TO A MINIMUM DEPTH OF 200mm FROM THE TOP OF THE ROOT BALL. PULL BURLAP TO THIS SAME MINIMUM DEPTH.
- T-BARS SHOULD BE HAMMERED DOWN INTO SOLID FOOTING (AT LEAST 400mm INTO SUBSOIL).
- STAKING TO BE IN PLACE FOR A MAXIMUM OF ONE YEAR, WHEN REQUIRED.
- USE RUBBER STRAPS AT END OF GUY WIRES TO PROTECT THE TREE AT POINT OF CONTACT.
- PRUNE DEAD / DYING / DISEASED BRANCHES TO MAINTAIN NATURAL FORM OF TREE
- ALL DIMENSIONS IN MM.



2 TYPICAL DECIDUOUS PLANTING

L101 1:25



3 TYPICAL SHRUB PLANTING

L101 1:25

LANDSCAPE - PLANTING NOTES

ALL PLANT MATERIAL MUST MEET THE SPECIFICATIONS SET OUT IN THE LATEST GUIDE SPECIFICATIONS FOR NURSERY STOCK PREPARED BY THE CNFA AND ISA.

DECIDUOUS TREE SETBACKS (MINIMUM DIMENSIONS):

- 2.5m FROM HYDRANTS
- 4.0m FROM STREET LIGHTING
- 3.5m FROM TRANSFORMERS
- 4.0m FROM BUS STOPS
- 4.5m FROM ISLAND BULLNOSES
- 2.5m FROM CURB STOPS

CONIFEROUS TREE SETBACKS (MINIMUM DIMENSIONS):

- 3.0m FROM HYDRANTS
- 4.0m FROM STREET LIGHTING
- 3.5m FROM TRANSFORMERS
- 4.0m FROM BUS STOPS
- 4.5m FROM ISLAND BULLNOSES
- 3.0m FROM CURB STOPS

THE EXACT LOCATION OF TREES SHALL BE DETERMINED ON SITE/FIELD FIT AND SHALL BE SUBJECT TO DRIVEWAY LOCATIONS, SERVICING, STREET LIGHTING AND OTHER FURNISHINGS WHERE APPLICABLE.

CHANGES TO PLANTING LOCATIONS: SEE LAYOUT NOTES.

TREES PLANTED 3.5m OR LESS FROM FENCE LINES SHALL BE BEDDED.

BEDS AND TREE WELLS TO BE MULCHED JUST PRIOR TO FAC.

PLANT MATERIAL MAINTENANCE: SEE PROJECT SPECIFIC NOTES.

PLANT MATERIAL AT TIME OF FINAL ACCEPTANCE: SEE PROJECT SPECIFIC NOTES.

PLANT MATERIAL SHALL BE MAINTAINED BY THE CONTRACTOR AS OUTLINED UNTIL THE DATE OF ISSUE OF FINAL ACCEPTANCE CERTIFICATE.

LANDSCAPE - LAYOUT NOTES

STAKE LAYOUT (E.G. PATHS, AND PLANTING) FOR APPROVAL BY STANTEC BEFORE CONSTRUCTION. STANTEC REQUIRES 24HOURS NOTIFICATION PRIOR TO INSPECTION.

REQUEST FOR ALTERNATES MUST BE SUBMITTED TO STANTEC PRIOR TO BID SUBMISSION. REQUESTED ALTERNATES MUST CONFORM TO SPECIFIED MATERIAL SAND REQUIRES APPROVAL BY STANTEC AND THE OWNER FOR ACCEPTANCE.

CHANGES TO PLANTING LOCATIONS ARE TO BE NOTED ON A RECORD DRAWING AND SUBMITTED TO OWNER WITHIN 30 DAYS OF ISSUANCE OF CCC.

Revision	By	Appd	YYYY.MM.DD

Permit-Seal

Client/Project  
 GOVERNMENT OF CANADA  
 ELK POINT - NEW BUILDING

54 STREET AND RAILWAY AVENUE  
 ELK POINT, ALBERTA

Title  
 LANDSCAPE PLAN

Project No.  
 144202690

Scale  
 As indicated

Revision  
 Drawing No.

C:\Users\Public\Documents\Local\_Brev\_Files\Arch\_016\_144202690\_mcrspg.rvt  
 1/29/2016 4:33:10 PM