

### Copyright Reserved

The Contractor shall verify and be responsible for all dimensions. DO NOT scale the drawing - any errors or omissions shall be reported to Stantec without delay. The Copyrights to all designs and drawings are the property of Stantec. Reproduction or use for any purpose other than that authorized by Stantec is forbidden.

### Consultants

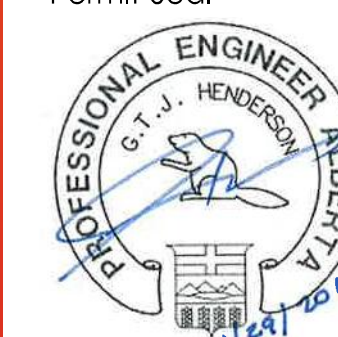
### Legend

### Notes

### Revision

ISSUED FOR TENDER	JPH	GH	2016.01.29
Issued	By	Appd	YYYY.MM.DD

### Permit-Seal



PERMIT TO PRACTICE  
STANTEC CONSULTING LTD.  
Signature  
Date: 1/29/2016  
PERMIT NUMBER: P 0258  
The Association of Professional Engineers,  
Geologists and Geophysicists of Alberta

Client/Project  
**GOVERNMENT OF CANADA**  
**ELK POINT - NEW BUILDING**

54 STREET AND RAILWAY AVENUE  
ELK POINT, ALBERTA

Title  
**MECHANICAL LEGEND, DRAWING LIST & GAS LEGEND**

Project No. 144202690 Scale N.T.S.

Revision Drawing No.

Sheet 1 of 12

# M001

### MECHANICAL DRAWING LIST

DRAWING No.	DRAWING NAME	SCALE
M001	MECHANICAL LEGEND, DRAWING LIST & GAS LEGEND	N.T.S.
M050	MECHANICAL FOUNDATION PLAN	1:75
M100	MAIN FLOOR - PLUMBING & FIRE PROTECTION PLAN	1:75
M101	MAIN FLOOR - HEATING & VENTILATION PLAN	1:75
M200	MECHANICAL ROOF PLAN	1:75
M300	MECHANICAL DETAILS	N.T.S.
M301	MECHANICAL DETAILS	N.T.S.
M302	MECHANICAL DETAILS	N.T.S.
M303	MECHANICAL DETAILS	N.T.S.
M304	MECHANICAL DETAILS	N.T.S.
M400	MECHANICAL SCHEDULES	N.T.S.
M401	MECHANICAL SCHEDULES	N.T.S.

### GAS LEGEND

DESCRIPTION	kW
DOMESTIC WATER HEATER <u>DWH-1</u>	58.6
MAKE-UP AIR UNIT <u>MUA-1</u>	102.6
ROOFTOP UNIT <u>RTU-1</u>	146.5
UNIT HEATER <u>UH-1</u>	30.8
UNIT HEATER <u>UH-2</u>	30.8
UNIT HEATER <u>UH-3</u>	8.8
TOTAL	378.1

NOTE: DISTRIBUTION GAS PRESSURE IS 2.48 kPa. PROVIDE PRESSURE REDUCING VALVES AS INDICATED FOR APPLIANCE REQUIRED PRESSURES. VENT ALL PRV'S TO ATMOSPHERE.

### ABBREVIATIONS

#### MECHANICAL EQUIPMENT

AIR CONDITIONING UNIT	ACU*
CONDENSING UNIT	CU*
DOMESTIC WATER HEATER	DWH*
EXHAUST FAN	EF*
ELECTRIC HEATER	EH*
METER	M*
PUMP	P*
RETURN FAN	RF*
ROOFTOP UNIT	RTU**
SUPPLY FAN	SF*
TANK	TK*
UNIT HEATER	UH*

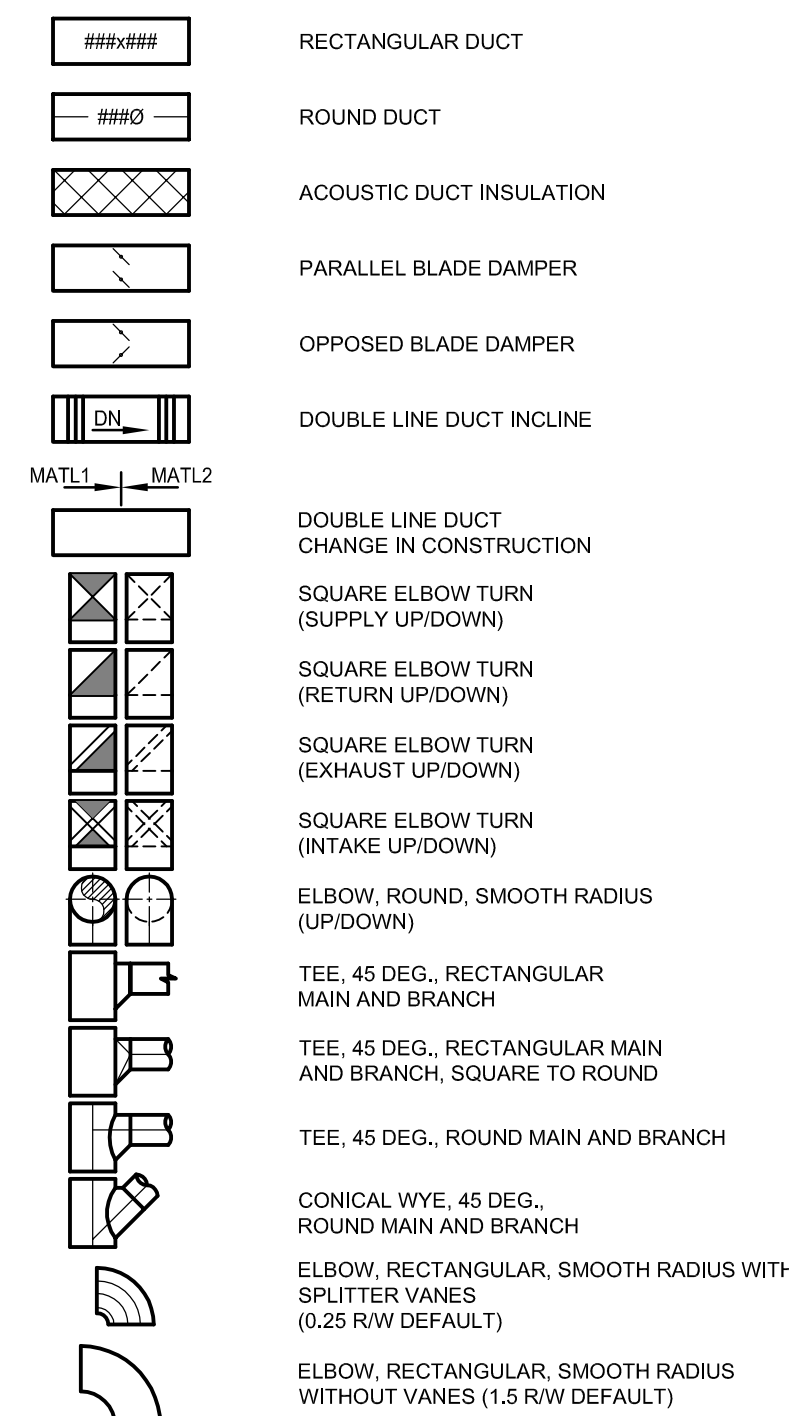
#### PLUMBING FIXTURES

COMBINATION LAVATORY/TOILET	CMB
EMERGENCY EYEWASH	EW
DRINKING FOUNTAIN	DF
LAVATORY	LAV
NON-FREEZE HOSE BIBB	NFHB
MOP SINK	MS
SHOWER	SH
SINK	SK
URINAL	UR
WATER CLOSET	WC
AREA DRAIN	AD
FLOOR DRAIN	FD
FUNNEL FLOOR DRAIN	FFD
HUB DRAIN	HD
ROOF DRAIN	RD

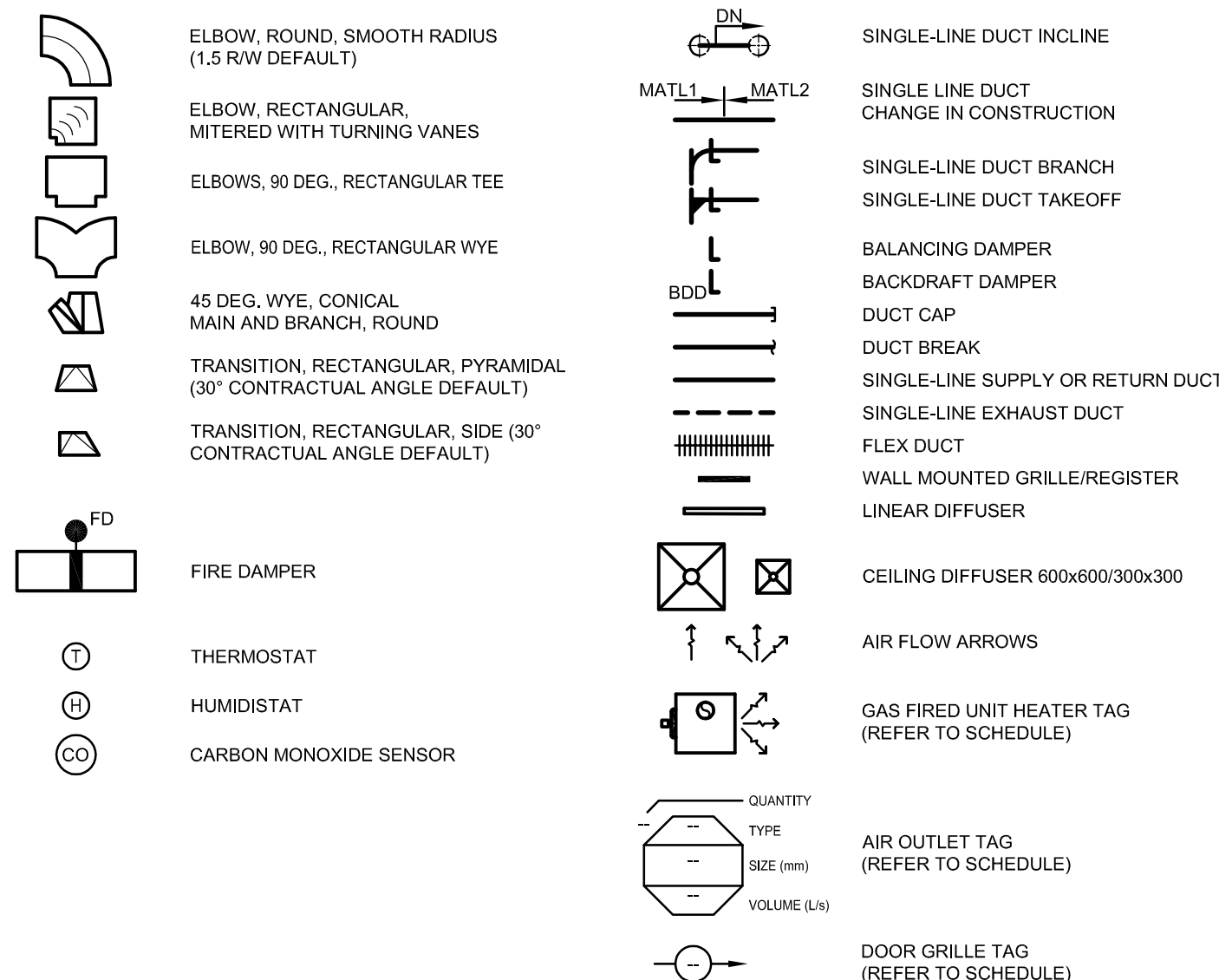
#### COMMON

A.F.F.	ABOVE FINISHED FLOOR
CW	COMPLETE WITH
DN.	DOWN
ELEV.	ELEVATION
INV.	INVERT
SAN	SANITARY
ST	STORM

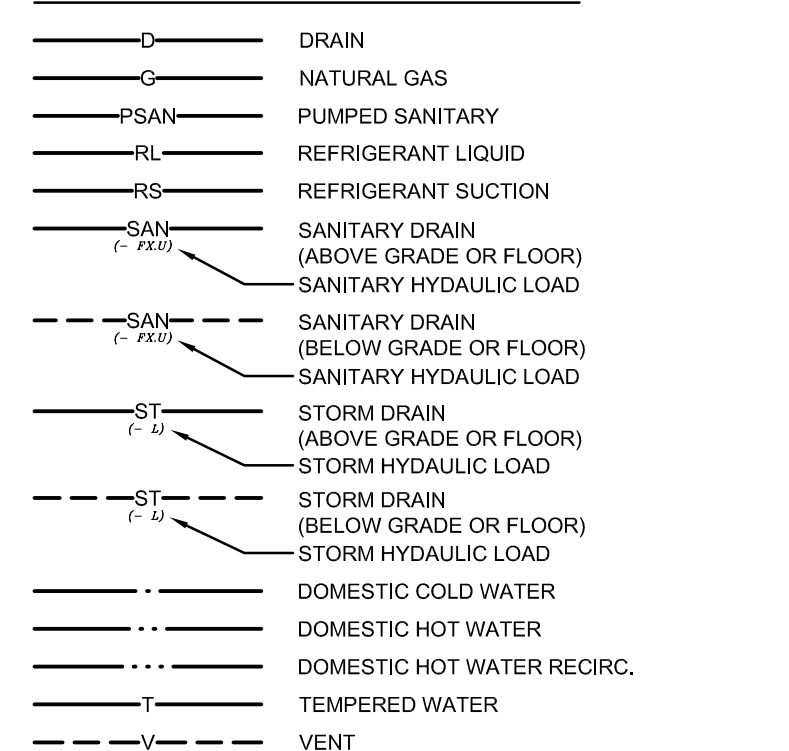
### HVAC SYMBOLS



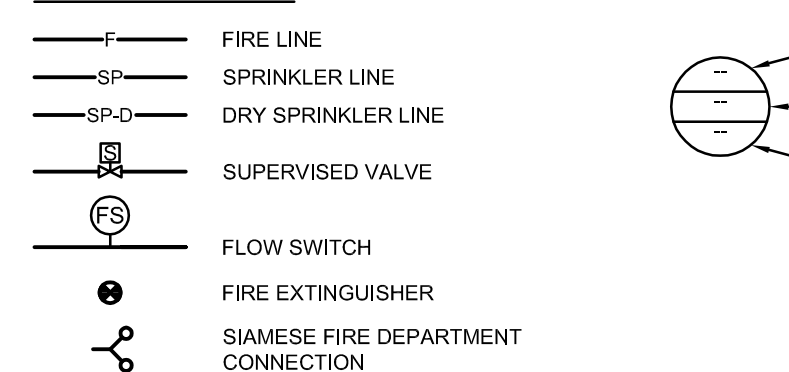
### HVAC SYMBOLS



### PIPING IDENTIFICATION AND SYMBOLS



### FIRE PROTECTION



#### Copyright Reserved

The Contractor shall verify and be responsible for all dimensions. DO NOT scale the drawing - any errors or omissions shall be reported to Stantec without delay.  
 The Copyrights to all designs and drawings are the property of Stantec. Reproduction or use for any purpose other than that authorized by Stantec is forbidden.

#### Consultants

#### Legend


#### Notes

Revision	By	Appd	YYYYMMDD

ISSUED FOR TENDER	JPH	GH	2016.01.29
Issued	By	Appd	YYYYMMDD

#### Permit-Seal



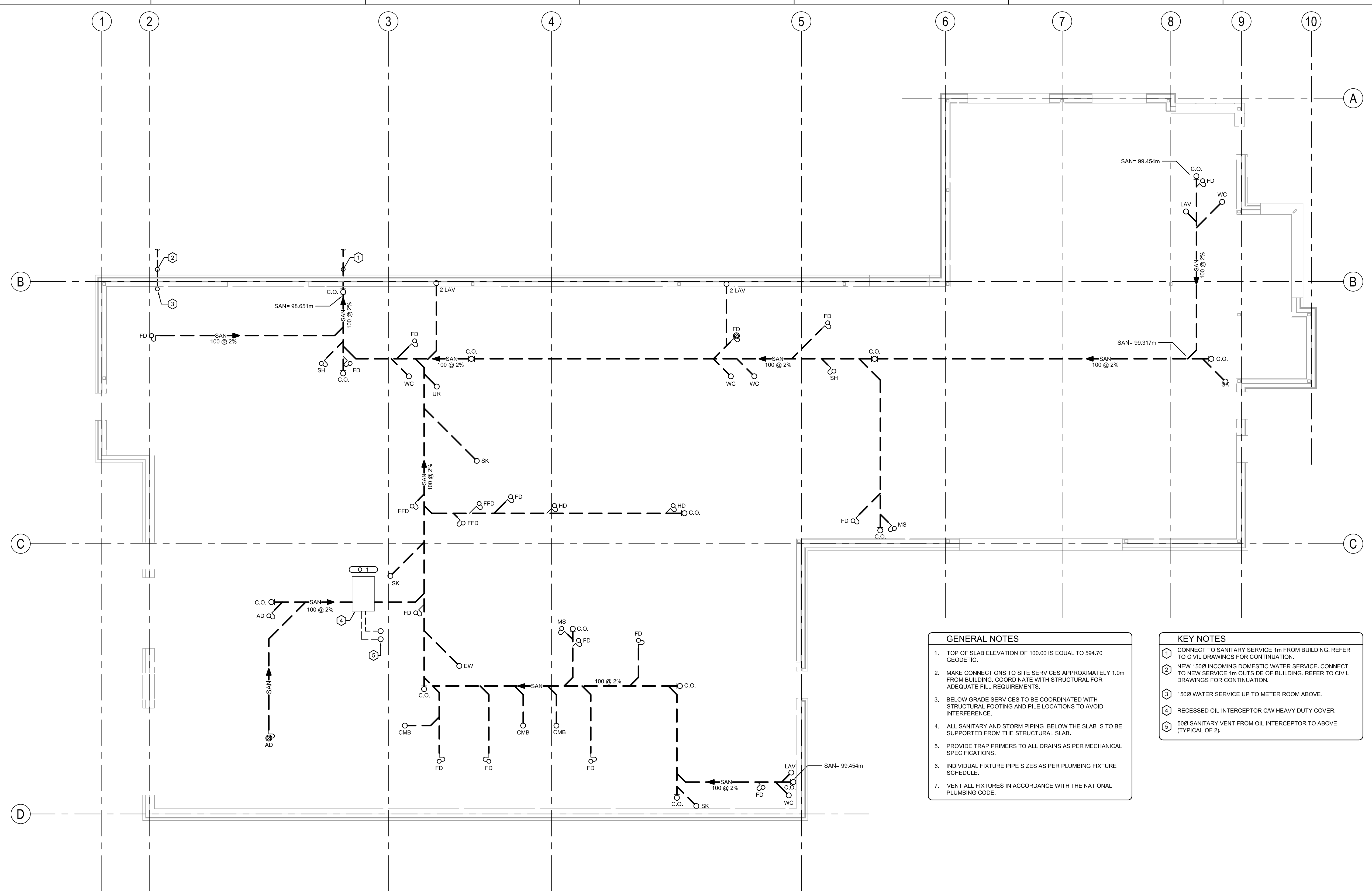
PERMIT TO PRACTICE  
 STANTEC CONSULTING LTD.  
 Signature: \_\_\_\_\_  
 Date: 1/29/2016  
 PERMIT NUMBER: P 0258  
 The Association of Professional Engineers,  
 Geologists and Geophysicists of Alberta

Client/Project  
**GOVERNMENT OF CANADA**  
**ELK POINT - NEW BUILDING**

54 STREET AND RAILWAY AVENUE  
 ELK POINT, ALBERTA

Title  
**MECHANICAL FOUNDATION PLAN**

Project No. 144202690 Scale 1:75  
 Revision Drawing No.  
 Sheet 2 of 12 **M050**



- #### GENERAL NOTES
- TOP OF SLAB ELEVATION OF 100.00 IS EQUAL TO 594.70 GEODETIC.
  - MAKE CONNECTIONS TO SITE SERVICES APPROXIMATELY 1.0m FROM BUILDING. COORDINATE WITH STRUCTURAL FOR ADEQUATE FILL REQUIREMENTS.
  - BELOW GRADE SERVICES TO BE COORDINATED WITH STRUCTURAL FOOTING AND PILE LOCATIONS TO AVOID INTERFERENCE.
  - ALL SANITARY AND STORM PIPING BELOW THE SLAB IS TO BE SUPPORTED FROM THE STRUCTURAL SLAB.
  - PROVIDE TRAP PRIMERS TO ALL DRAINS AS PER MECHANICAL SPECIFICATIONS.
  - INDIVIDUAL FIXTURE PIPE SIZES AS PER PLUMBING FIXTURE SCHEDULE.
  - VENT ALL FIXTURES IN ACCORDANCE WITH THE NATIONAL PLUMBING CODE.

- #### KEY NOTES
- CONNECT TO SANITARY SERVICE 1m FROM BUILDING. REFER TO CIVIL DRAWINGS FOR CONTINUATION.
  - NEW 150Ø INCOMING DOMESTIC WATER SERVICE. CONNECT TO NEW SERVICE 1m OUTSIDE OF BUILDING. REFER TO CIVIL DRAWINGS FOR CONTINUATION.
  - 150Ø WATER SERVICE UP TO METER ROOM ABOVE.
  - RECESSED OIL INTERCEPTOR C/W HEAVY DUTY COVER.
  - 50Ø SANITARY VENT FROM OIL INTERCEPTOR TO ABOVE (TYPICAL OF 2).

**1 MECHANICAL FOUNDATION PLAN**  
 M050 1:75

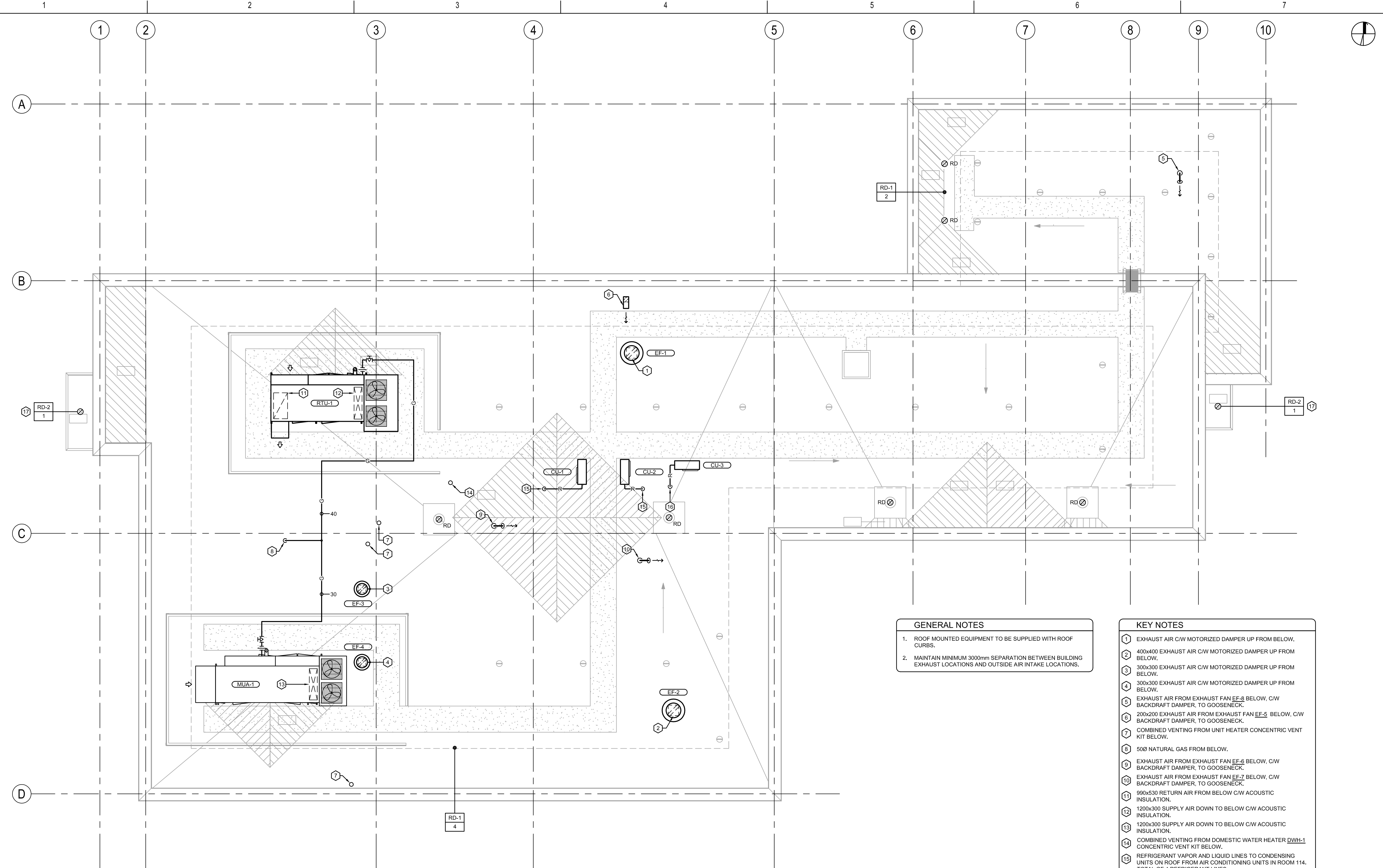












**GENERAL NOTES**

- ROOF MOUNTED EQUIPMENT TO BE SUPPLIED WITH ROOF CURBS.
- MAINTAIN MINIMUM 3000mm SEPARATION BETWEEN BUILDING EXHAUST LOCATIONS AND OUTSIDE AIR INTAKE LOCATIONS.

- KEY NOTES**
- 1 EXHAUST AIR C/W MOTORIZED DAMPER UP FROM BELOW.
  - 2 400x400 EXHAUST AIR C/W MOTORIZED DAMPER UP FROM BELOW.
  - 3 300x300 EXHAUST AIR C/W MOTORIZED DAMPER UP FROM BELOW.
  - 4 300x300 EXHAUST AIR C/W MOTORIZED DAMPER UP FROM BELOW.
  - 5 EXHAUST AIR FROM EXHAUST FAN EF-8 BELOW, C/W BACKDRAFT DAMPER, TO GOOSENECK.
  - 6 200x200 EXHAUST AIR FROM EXHAUST FAN EF-5 BELOW, C/W BACKDRAFT DAMPER, TO GOOSENECK.
  - 7 COMBINED VENTING FROM UNIT HEATER CONCENTRIC VENT KIT BELOW.
  - 8 50Ø NATURAL GAS FROM BELOW.
  - 9 EXHAUST AIR FROM EXHAUST FAN EF-6 BELOW, C/W BACKDRAFT DAMPER, TO GOOSENECK.
  - 10 EXHAUST AIR FROM EXHAUST FAN EF-7 BELOW, C/W BACKDRAFT DAMPER, TO GOOSENECK.
  - 11 99Øx530 RETURN AIR FROM BELOW C/W ACOUSTIC INSULATION.
  - 12 120Øx300 SUPPLY AIR DOWN TO BELOW C/W ACOUSTIC INSULATION.
  - 13 120Øx300 SUPPLY AIR DOWN TO BELOW C/W ACOUSTIC INSULATION.
  - 14 COMBINED VENTING FROM DOMESTIC WATER HEATER DWH-1 CONCENTRIC VENT KIT BELOW.
  - 15 REFRIGERANT VAPOR AND LIQUID LINES TO CONDENSING UNITS ON ROOF FROM AIR CONDITIONING UNITS IN ROOM 114. TOTAL OF 4 REFRIGERANT LINES.
  - 16 REFRIGERANT VAPOR AND LIQUID LINES TO CONDENSING UNITS ON ROOF FROM AIR CONDITIONING UNIT IN ROOM 134. TOTAL OF 2 REFRIGERANT LINES.
  - 17 MECHANICAL CONTRACTOR TO PROVIDE 150mm Ø PIPE OFF THE BOTTOM OF THE ROOF DRAIN FOR CONNECTION TO A RAINWATER LEADER. RAINWATER LEADER TO BE SUPPLIED AND INSTALLED BY OTHERS.

**1 MECHANICAL ROOF PLAN**  
 M200 1:75



























