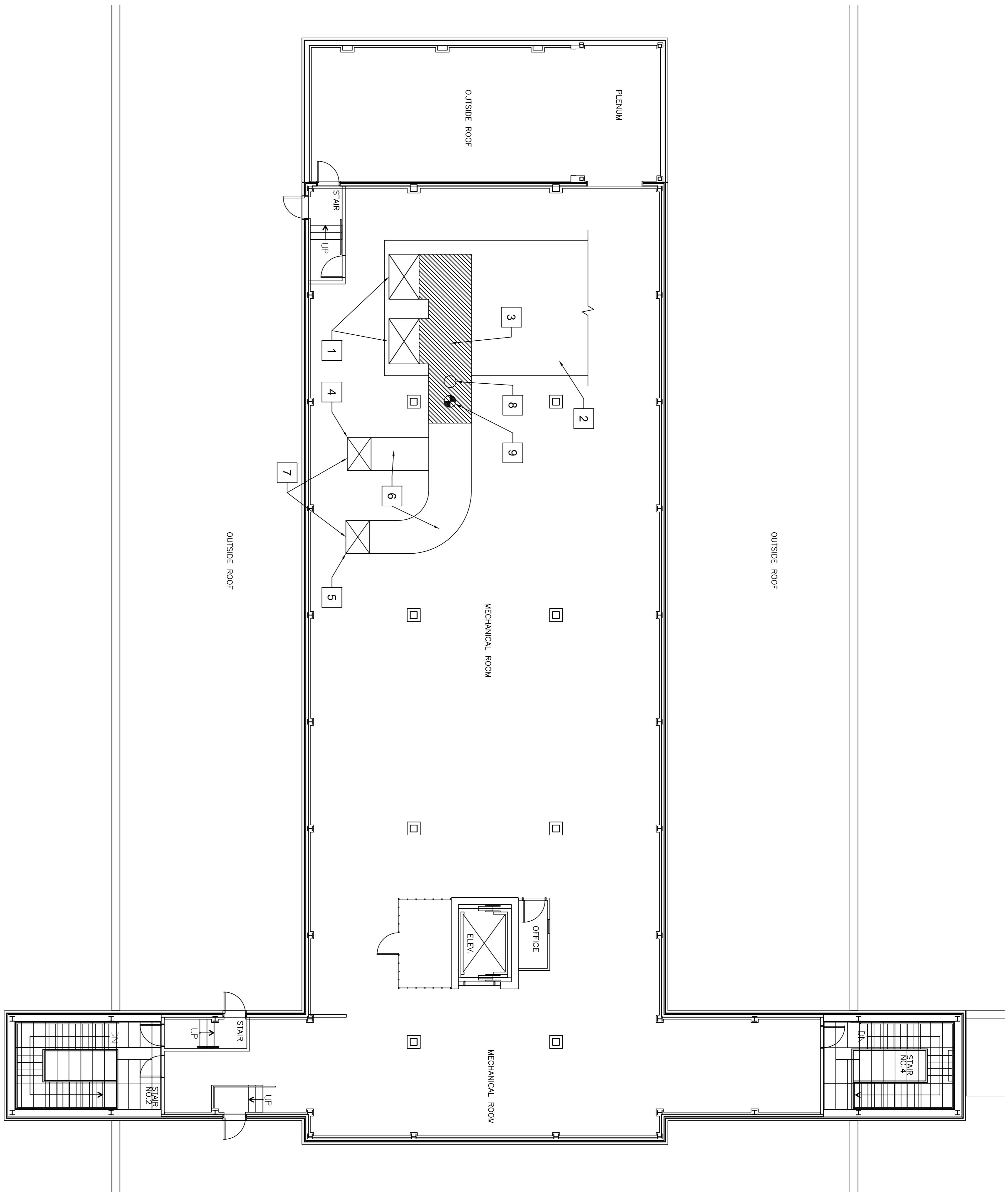


0 10 20 30 40 50 60 70 80 90 100 110 120 130 140 150 160 170 180 190 200 millimeters



- GENERAL NOTES**
- CONTRACTOR TO SUPPLY AND INSTALL ALL EQUIPMENT WITH SEISMIC CONTROLS.
 - CONTRACTOR TO PROVIDE SHOP DRAWINGS STAMPED BY A PROFESSIONAL ENGINEER OF ONTARIO OUTLINING THE DESIGN AND INSTALLATION METHODS FOR SEISMIC CONTROL OF ALL EQUIPMENT.
 - SEE SPECIFICATION SECTION 23 05 48 REGARDING SEISMIC CONTROLS.
 - CONTRACTOR TO BALANCE AIR SYSTEM AFTER NEW INSTALLATION AND TO PROVIDE BALANCING REPORT. CONTRACTOR TO MATCH ORIGINAL BALANCING REPORTS TO MATCH ORIGINAL CONDITIONS. SEE SPECIFICATIONS FOR PREVIOUS BALANCING REPORT (2007).

- DRAWING NOTES**
- EXISTING FANS TO REMAIN.
 - EXISTING AHU-101 TO REMAIN.
 - REMOVE EXISTING DUCT SHOWN AS SHADED. SHADED SECTION OF DUCT IS TO BE REPLACED WITH SILENCER.
 - REMOVE INSIDE LINER OF VERTICAL DUCT. HEIGHT OF VERTICAL DUCT IS APPROXIMATELY 4900 MM. CONTRACTOR TO VERIFY HEIGHT AT JOB SHOWING.
 - REMOVE INSIDE LINER OF VERTICAL DUCT. HEIGHT OF VERTICAL DUCT IS APPROXIMATELY 4900 MM. CONTRACTOR TO VERIFY HEIGHT AT JOB SHOWING.
 - REMOVE INSIDE LINER OF DUCTWORK.
 - PROVIDE A COVER OVER OPENING AT THE BASE OF THE DUCT AND FLOOR TO PREVENT DUST AND DEBRIS FROM CONTAMINATING DUCT SYSTEM ON THE LOWER FLOORS.
 - REMOVE EXISTING PRESSURE SENSOR. PRESSURE SENSOR SHALL BE RE-USED AND RELOCATED. SEE M-2 FOR NEW LOCATION OF PRESSURE SENSOR.
 - REMOVE EXISTING SMOKE DETECTOR. SMOKE DETECTOR SHALL BE RE-USED AND RELOCATED. SEE M-2 FOR NEW LOCATION OF SMOKE DETECTOR.

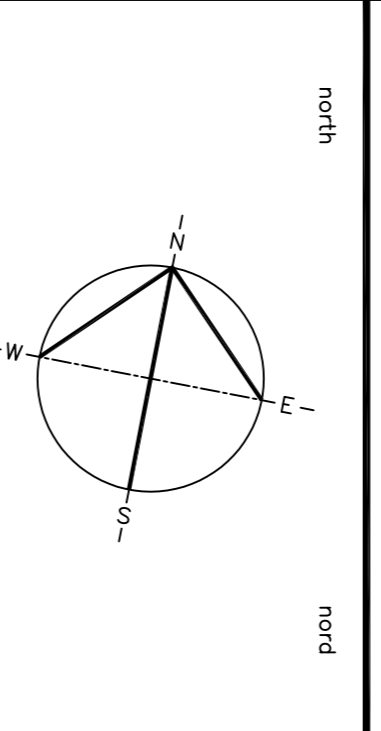
- DUCT CLEANING**
- CONTRACTOR SHALL CLEAN ALL SUPPLY AND MAIN EXHAUST DUCT SYSTEMS ON ALL FLOORS AND THE MECHANICAL ROOMS. SEE SPECIFICATION SECTION 23 23 00 CLEANING FOR DETAILS AND LOCATION OF DUCTS.

DEMOLITION - MECH. FLOOR PLAN
1 : 100

Public Works and
Government Services Canada
Travaux publics et
Services gouvernementaux Canada

National Centre of Expertise
Architectural and Engineering Services
Red Property Services Branch
Centre d'expertise national
Services d'architecture et de génie immobiliers
Direction générale des services immobiliers

RSG ENGINEERING INC.
60 TIPPERARY PRIVATE
NEPEAN, ONTARIO, K2J 2T3
TEL: 613-721-0880



No.	Revision	Date
1	ISSUED FOR 66% REVIEW	17/02/2014
2	ISSUED FOR 99% REVIEW	17/02/2014
3	ISSUED FOR TENDER	25/01/2016

Detail No.	No. du détail	No. where detail required
A		where detail required
B		old detail to be removed
C		where detailed

project title
**NPS LAB TOWER
FL - DUCT WORK
INSULATION REPAIR**

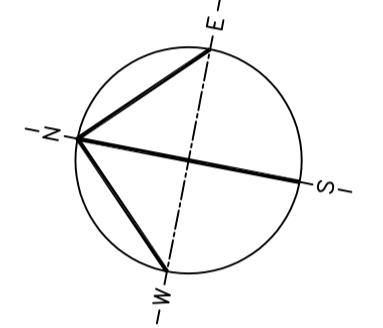
drawn title
**DEMOLITION
MECHANICAL FLOOR PLAN**

designed	R.G.	conçu
date	V.B.	dessiné
date	R.G.	révisé
date	SHELLY LANDLAV	approuvé
date	SHELLY LANDLAV	soumission
Project Manager	Administrateur de projets	no. du projet
Project no.	PW 4212	no. du dessin
drawing no.	M-1	

RSG ENGINEERING INC.

60 TIPPERARY PRIVATE
NEPEAN, ONTARIO, K2J 2T3
TEL: 613-721-0880

north north



seal



No	Revision	Date
3	ISSUED FOR TENDER	25/01/2016
2	ISSUED FOR 99% REVIEW	17/03/2014
1	ISSUED FOR 66% REVIEW	17/02/2014

A	Detail No.	No. du détail
B	drawing no. - where detail required	dessin no. - où détail exigé
C	drawing no. - where detailed	dessin no. - où détaillé

project title titre du projet

NPS LAB TOWER

FL - DUCT WORK
INSULATION REPAIR

drawn title titre du dessin

NEW LAYOUT
MECHANICAL FLOOR PLAN

designed R.G. concu

date

drawn V.B. dessine

date

revised R.G. revise

date

approved SHELLY LAIDLAW approuve

date

tender SHELLY LAIDLAW soumission

Project Manager Administrateur de projets

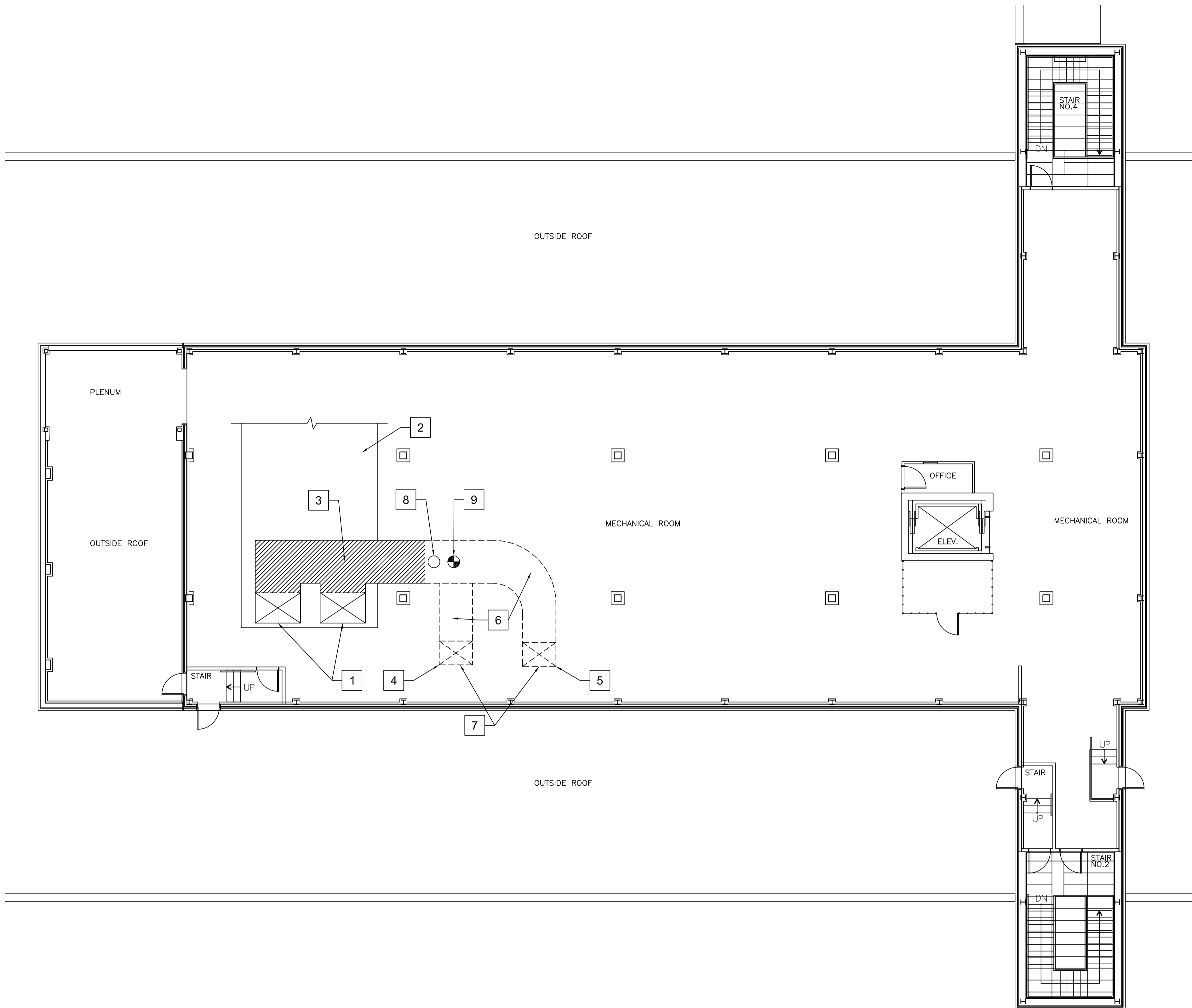
project no. PW 4212 no. du projet

drawing no. M-2 no. du dessin

- GENERAL NOTES**
- CONTRACTOR TO SUPPLY AND INSTALL ALL EQUIPMENT WITH SEISMIC CONTROLS.
 - CONTRACTOR TO PROVIDE SHOP DRAWINGS STAMPED BY A PROFESSIONAL ENGINEER OF ONTARIO OUTLING THE DESIGN AND INSTALLATION METHODS FRO SEISMIC CONTROL OF ALL EQUIPMENT
 - SEE SPECIFICATION SECTION 23 05 48 REGARDING SEISMIC CONTROLS.
 - CONTRACTOR TO BALANCE AIR SYSTEM AFTER NEW INSTALLATION AND CLEANING HAVE BEEN COMPLETED. BALANCING TO BE SIMILAR TO PREVIOUS BALANCE. SEE SPECIFICATION OF PREVIOUS BALANCING REPORT 2007.

- DRAWING NOTES**
- EXISTING FANS.
 - EXISTING AHU-01.
 - SUPPLY AND INSTALL DUCT SILENCER SHOWN AS SHADED. SUPPLY AND INSTALL INSULATION 50 MM THICK ON THE OUTSIDE OF THE DUCT SILENCER.
 - SUPPLY AND INSTALL INSULATION 50 MM THICK ON THE OUTSIDE OF THE VERTICAL DUCT. HEIGHT OF VERTICAL DUCT IS APPROXIMATELY 4900 MM. CONTRACTOR TO VERIFY HEIGHT AT JOB SHOWING.
 - SUPPLY AND INSTALL INSULATION 50 MM THICK ON THE OUTSIDE OF THE VERTICAL DUCT. HEIGHT OF VERTICAL DUCT IS APPROXIMATELY 4900 MM. CONTRACTOR TO VERIFY HEIGHT AT JOB SHOWING.
 - SUPPLY AND INSTALL INSULATION 50 MM THICK ON THE OUTSIDE OF THE DUCTWORK.
 - PROVIDE A COVER OVER OPENING AT THE BASE OF THE DUCT AND FLOOR TO PREVENT DUST AND DEBRIS FROM CONTAMINATING DUCT SYSTEM ON THE LOWER FLOORS.
 - REINSTALL EXISTING PRESSURE SENSOR AT THIS LOCATION.
 - REINSTALL EXISTING SMOKE DETECTOR AT THIS LOCATION.

- DUCT CLEANING**
- CONTRACTOR SHALL CLEAN ALL SUPPLY AND MAIN EXHAUST DUCT SYSTEMS ON ALL FLOORS AND THE MECHANICAL ROOMS. SEE SPECIFICATION SECTION 23 23 00 CLEANING FOR DETAILS AND LOCATION OF DUCTS.



NEW LAYOUT - MECH. FLOOR PLAN
1 : 100