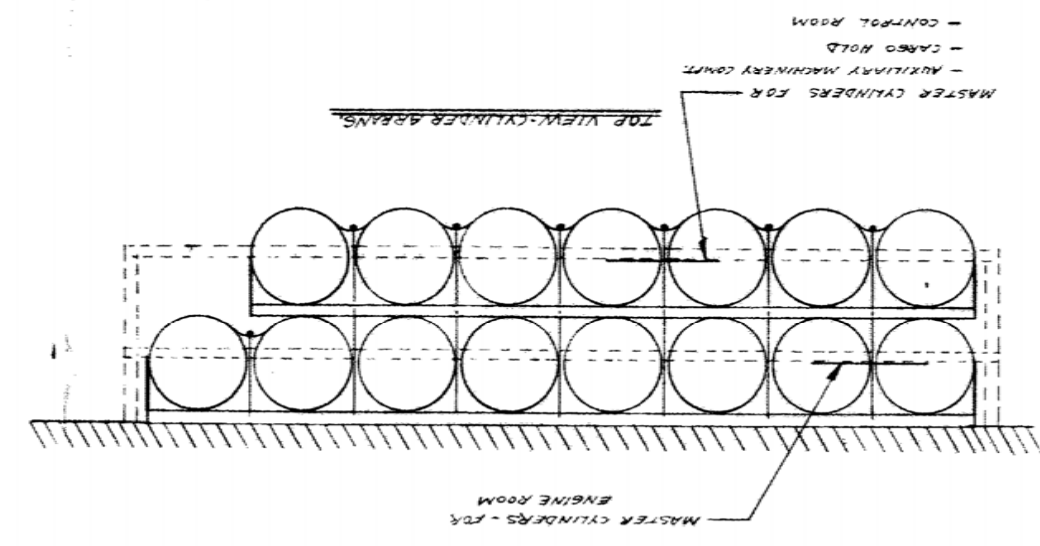
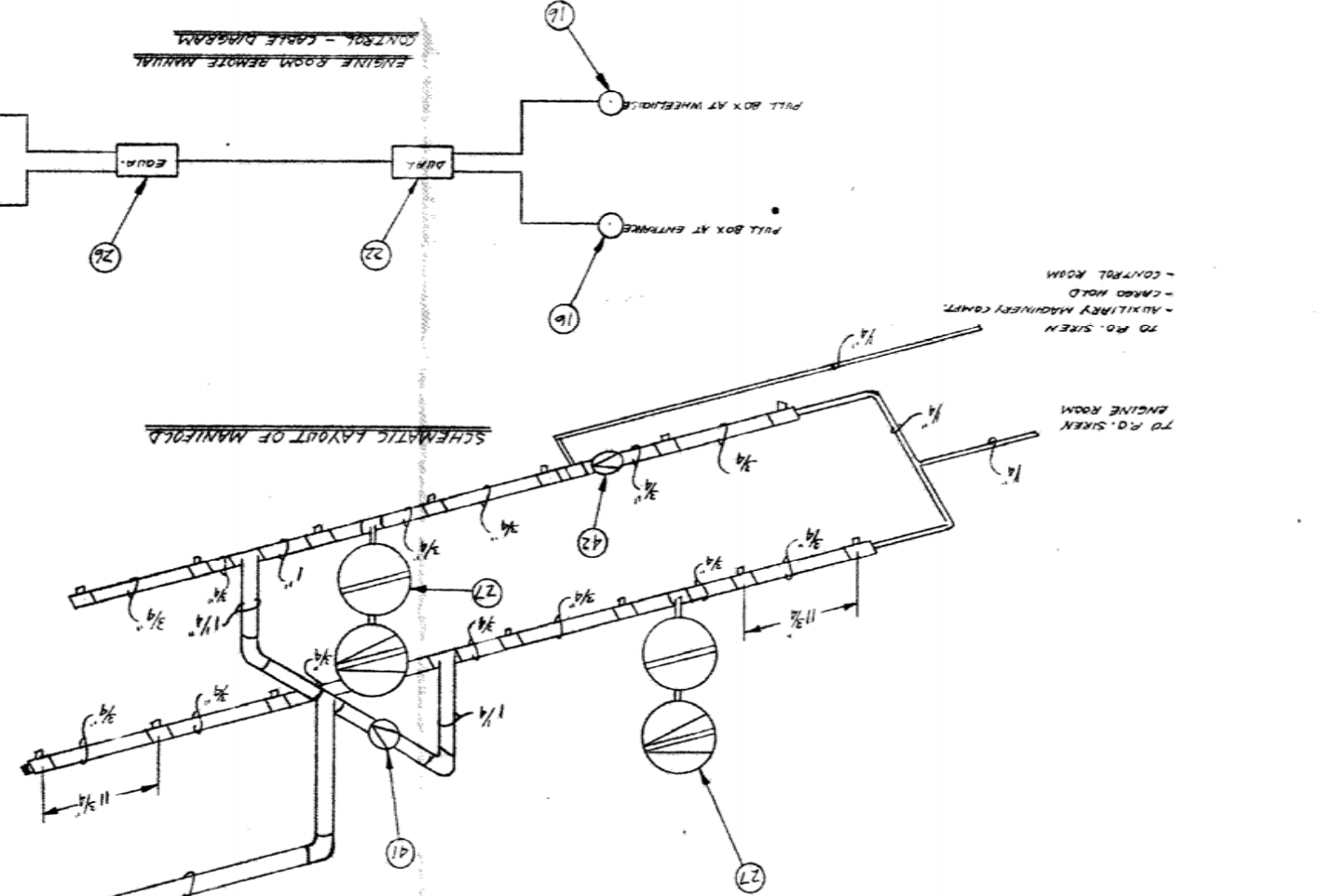
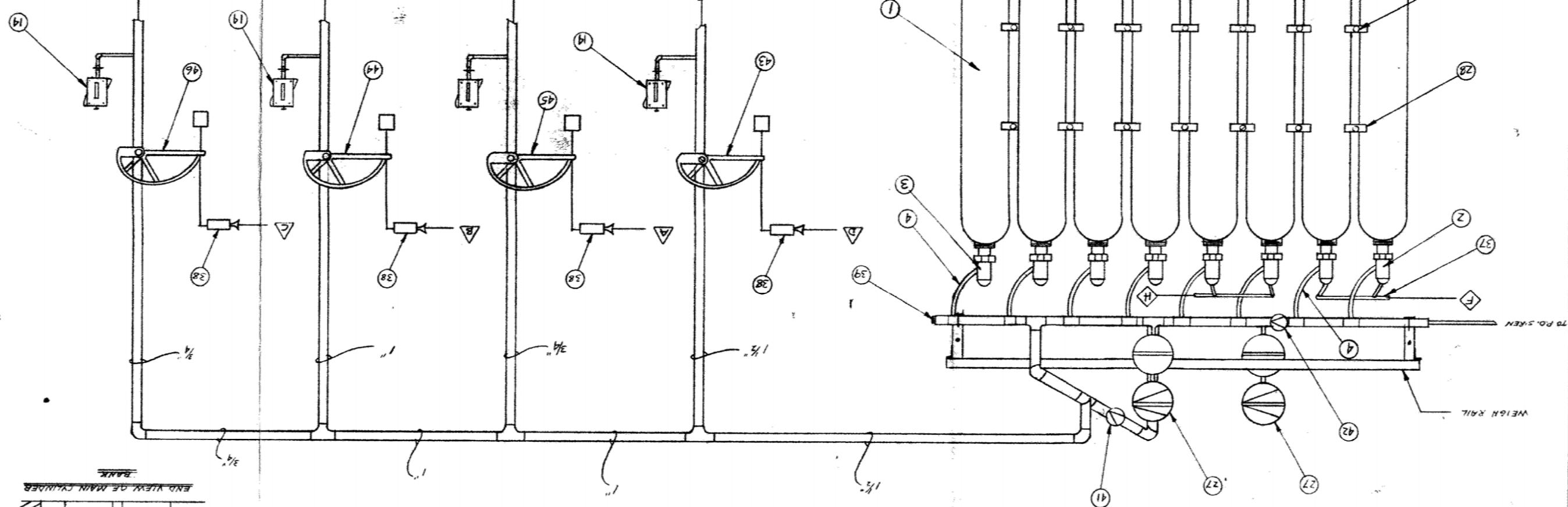
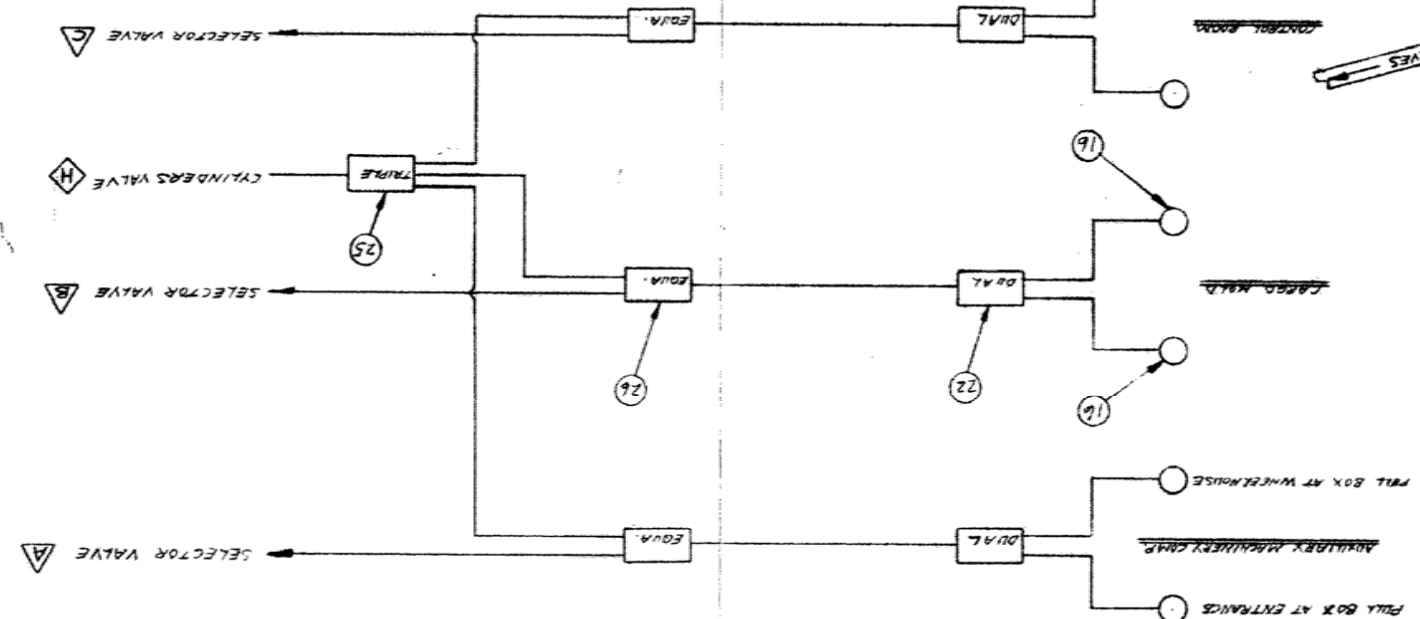
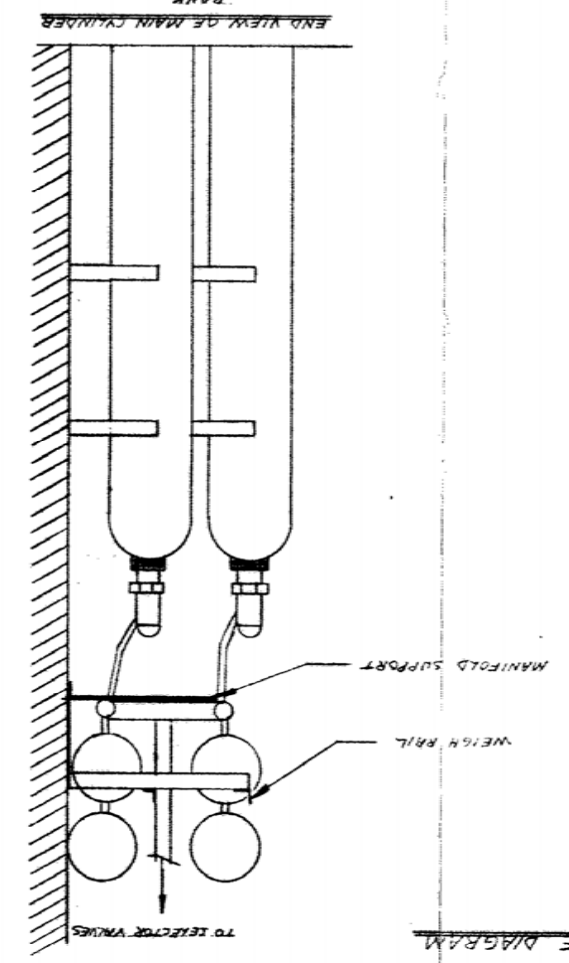
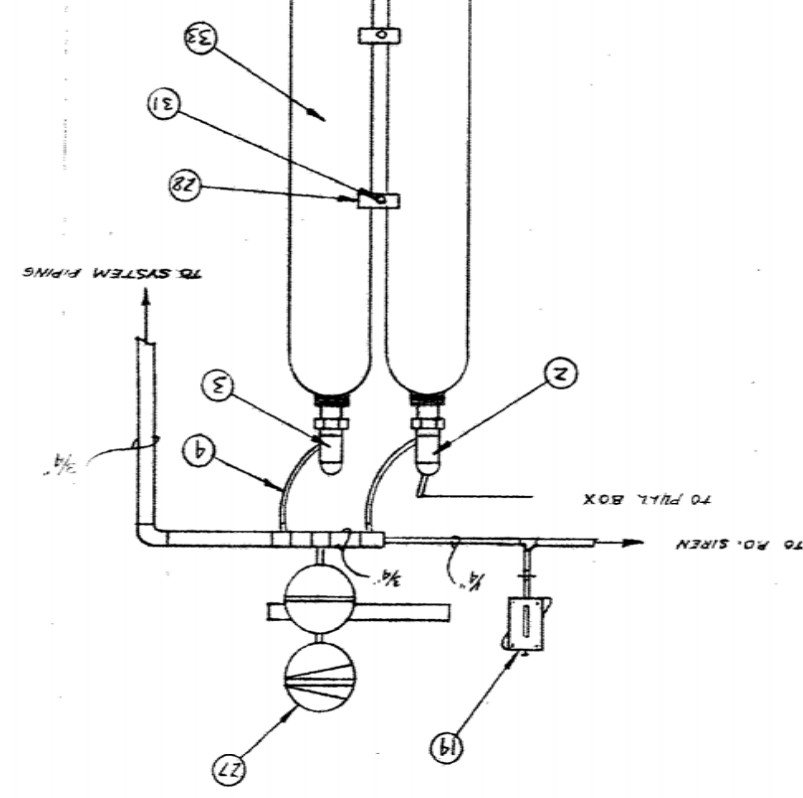
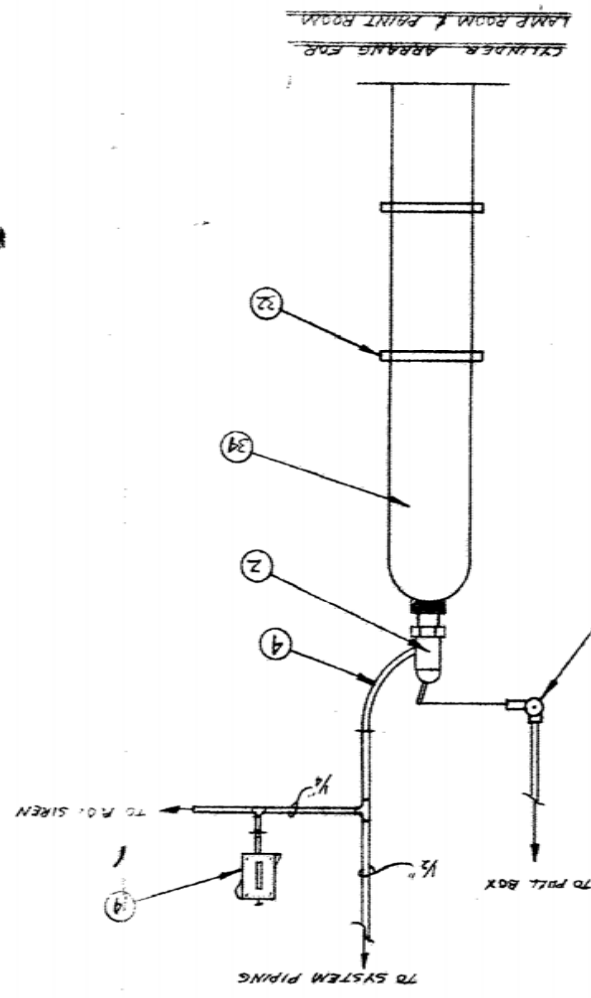


PC	DRAWING NO.	NAME OF PART
1	5207	100 LBS CYLINDER 4" V.F. VALVE
2	6522	DISCHARGE HEAD HIGH LEVER
3	6526	ACORN HEAD ASS. ACORN COVER
4	6248	DISCHARGE BEND TYPE A/F
5	6248	CYLINDER BRACKET SEE DRAWING
6	6248	ELECT. DISCH. FLOW C/W CONNECTOR
7	6248	UNIT
8	6248	DISCHARGE NOZZLE 4" MULTI
9	6248	DISCHARGE NOZZLE 4" MULTI
10	6248	DISCHARGE NOZZLE 4" MULTI
11	6248	DISCHARGE NOZZLE 4" MULTI
12	6248	DISCHARGE NOZZLE 4" MULTI
13	6248	DISCHARGE NOZZLE 4" MULTI
14	6248	PNEUMATIC SWITCH
15	6248	PNEUMATIC RELEASE
16	6248	REMOTE CONTROL BOX
17	6248	CORNER PULLEY BRASS
18	6248	FLARED END FITTING
19	6248	CABLE CLAMP
20	6248	CONDUIT BRACKET
21	6248	4-48 SHUT-OFF VALVE
22	6248	6-6277
23	6248	6-6277
24	6248	6-6277
25	6248	6-6277
26	6248	6-6277
27	6248	6-6277
28	6248	6-6277
29	6248	6-6277
30	6248	6-6277
31	6248	6-6277
32	6248	6-6277
33	6248	6-6277
34	6248	6-6277
35	6248	6-6277
36	6248	6-6277
37	6248	6-6277
38	6248	6-6277
39	6248	6-6277
40	6248	6-6277
41	6248	6-6277
42	6248	6-6277
43	6248	6-6277
44	6248	6-6277
45	6248	6-6277
46	6248	6-6277
47	6248	6-6277
48	6248	6-6277
49	6248	6-6277
50	6248	6-6277
51	6248	6-6277
52	6248	6-6277
53	6248	6-6277
54	6248	6-6277
55	6248	6-6277
56	6248	6-6277
57	6248	6-6277
58	6248	6-6277
59	6248	6-6277
60	6248	6-6277
61	6248	6-6277
62	6248	6-6277
63	6248	6-6277
64	6248	6-6277
65	6248	6-6277
66	6248	6-6277
67	6248	6-6277
68	6248	6-6277
69	6248	6-6277
70	6248	6-6277
71	6248	6-6277
72	6248	6-6277
73	6248	6-6277
74	6248	6-6277
75	6248	6-6277
76	6248	6-6277
77	6248	6-6277
78	6248	6-6277
79	6248	6-6277
80	6248	6-6277
81	6248	6-6277
82	6248	6-6277
83	6248	6-6277
84	6248	6-6277
85	6248	6-6277
86	6248	6-6277
87	6248	6-6277
88	6248	6-6277
89	6248	6-6277
90	6248	6-6277
91	6248	6-6277
92	6248	6-6277
93	6248	6-6277
94	6248	6-6277
95	6248	6-6277
96	6248	6-6277
97	6248	6-6277
98	6248	6-6277
99	6248	6-6277
100	6248	6-6277

NOTE: (1) ALL PIPING AS PER SHEET NO. 460293-4. (2) FOR DETAIL OF PIPING IN ROOMS SEE DWGS NO. 74-265-2 & 74-265-3. (3) LOCATE PULL BOXES AT A CONVENIENT LOCATION.



18