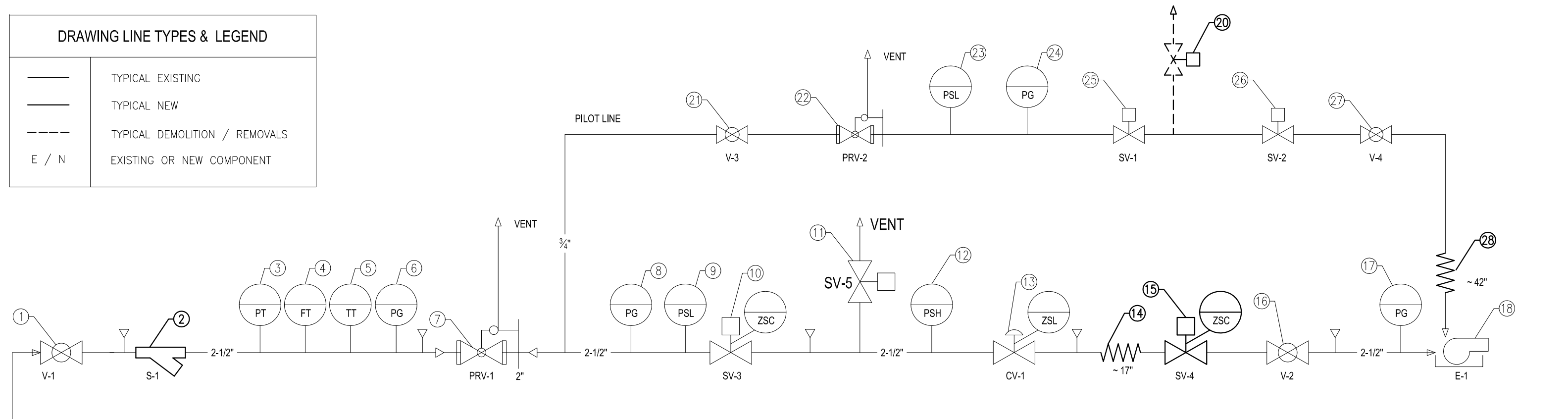


DRAWING LINE TYPES & LEGEND

	TYPICAL EXISTING
	TYPICAL NEW
	TYPICAL DEMOLITION / REMOVALS
E / N	EXISTING OR NEW COMPONENT



20 PSI
GAS SUPPLY

NOTE:
FLEXIBLE HOSE LENGTH PROVIDED IN THIS DRAWING IS APPROXIMATE DIMENSION. CONTRACTOR TO VERIFY DIMENSIONS ON SITE AND INDICATE END CONNECTION TYPES PRIOR TO ORDERING.

18	E	E-1	BURNER
17	E		PRESSURE GAUGE
16	E	V-2	NORDSTROM LPV, 2-1/2"
15	N	SV-4/ZSC	MAXON SSV, 2-1/2", 5000CP, WITH LIMIT SWITCH, RATING 50PSI, CGA3.9
14	N		FLEXIBLE HOSE, 2-1/2", FLANGED, CSA APPROVED, APPROX. 17" LONG, REFER TO NOTE
13	E	CV-1/ZSL	FISHER 2-1/2", 667-EZ
12	E	PSH	ASHCROFT B420B
11	E	SV-5	ASCO N.O. VENT VALVE, 1-1/4", MODEL: S262SG02N3GJ7, RATING 25PSI
10	E	SV-3/ZSC	MAXON SSV, 2-1/2", 5000CP, WITH LIMIT SWITCH, RATING 50PSI, CGA3.9
9	E	PSL	ASHCROFT B420B
8	E		PRESSURE GAUGE
7	E	PRV-1	FISHER GAS PRESSURE REGULATOR, 2", MODEL: 1098-EGR
6	E		PRESSURE GAUGE
5	E		TEMPERATURE TRANSMITTER
4	E		DP TRANSMITTER & MCCROMETER VCONE
3	E		PRESSURE TRANSMITTER
2	N	S-1	STRAINER
1	E	V-1	HOMESTEAD BALL VALVE, 2-1/2"

28	N		FLEXIBLE HOSE, 3/4" NPT, CSA APPROVED, APPROXIMATELY 42" LONG, REFER TO NOTE
27	E	V-4	3/4" BALL VALVE, NEO
26	E	SV-2	ASCO N.C. SOLENOID VALVE, 3/4", MODEL: S261SF02N3EG5, RATING: 30PSI, CGA3.9
25	E	SV-1	ASCO N.C. SOLENOID VALVE, 3/4", MODEL: S261SF02N3EG5, RATING: 30PSI, CGA3.9
24	E		PRESSURE GAUGE
23	E		ASHCROFT B420B
22	E	PRV-2	FISHER GAS PRESSURE REGULATOR, 3/4", MODEL: CS-200
21	E	V-3	3/4" BALL VALVE, CRANE, F9202
20	E		REMOVE EXISTING PILOT SAFETY VENT, ASSOCIATED PIPING AND CAP

ITEM	E / N	TAG NUMBER	DESCRIPTION
MATERIALS LIST - NATURAL GAS MAIN TRAIN			

ITEM	E / N	TAG NUMBER	DESCRIPTION
MATERIALS LIST - NATURAL GAS MAIN TRAIN			

National Research Council Canada
 Conseil national de recherches Canada
 Administrative Services and Property Management Branch
 Division des services administratifs et gestion de l'immobilier

REV.	DATE	DESCRIPTION
B	AUG. 12, 2015	ISSUED FOR TENDER
A	MAR. 04, 2015	PRELIMINARY DRAWING

project
M-06 TSSA Compliance Boiler Upgrade
 MONTREAL ROAD CAMPUS

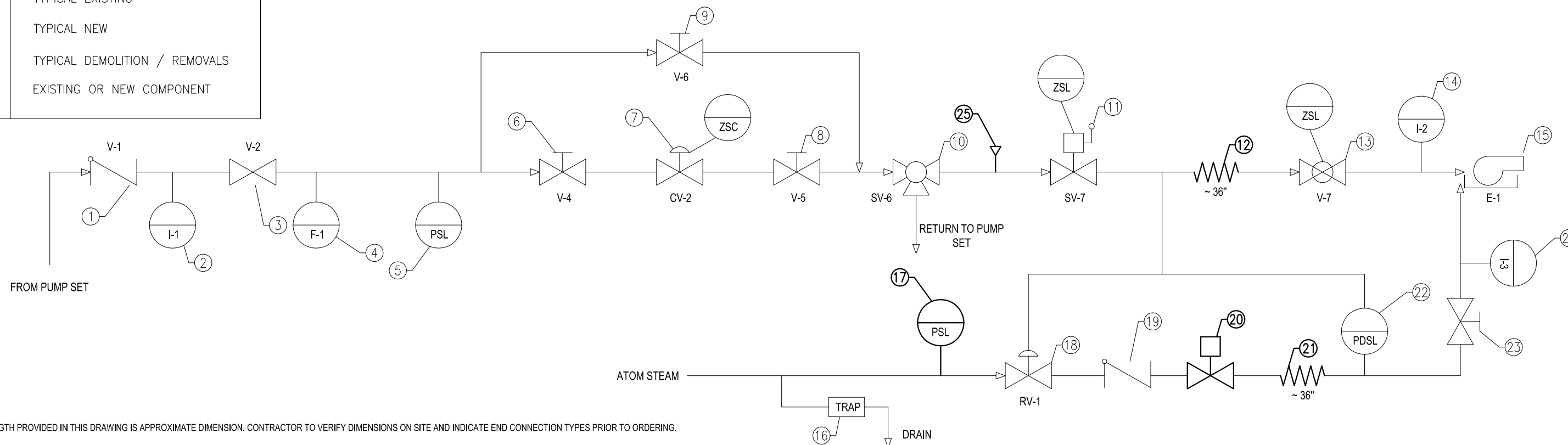
drawing
**NATIONAL RESEARCH COUNCIL OF CANADA
 M6 BOILER BMS UPGRADE
 BOILER #1 NATURAL GAS VALVE TRAIN SCHEMATIC**

date	date	scale	échelle
FEB 2016		N/A	

designed	conçu	checked	vérifié
drawn	dessiné	approved	approuvé
W.O.no.	D.T.no.	sheet	feuille
		1 of/de	1
dwg.no.			dessin no.
5042-M01			

DRAWING LINE TYPES & LEGEND

—	TYPICAL EXISTING
—	TYPICAL NEW
- - -	TYPICAL DEMOLITION / REMOVALS
E / N	EXISTING OR NEW COMPONENT



NOTE:
FLEXIBLE HOSE LENGTH PROVIDED IN THIS DRAWING IS APPROXIMATE DIMENSION. CONTRACTOR TO VERIFY DIMENSIONS ON SITE AND INDICATE END CONNECTION TYPES PRIOR TO ORDERING.

15	E	E-1	NAT-COM BURNER, D2-40-R
14	E	I-2	OIL PRESSURE GAUGE, TRERICE, 0-200PSIG
13	E	V-7/ZSC	MANUAL VALVE, C/W POS. SWITCH, JAMESBURY, STONEL
12	N		OIL FLEXIBLE HOSE, NPT, APPROXIMATELY 36" LONG, REFER TO NOTE
11	E	SV-7/ZSL	SSV, MAXON 1", MODEL: 7301, MANUAL RESET, C/W POS. SWITCH
10	E		ASCO/GENERAL CONTROLS 3-WAY VALVE, C/W POS. SWITCH, RETURN TO OIL SOURCE
9	E	V-6	BYPASS VALVE AROUND CONTROL VALVE, CRANE
8	E	V-5	ISOLATING VALVE SERVICING FLOW CONTROL VALVE, CRANE
7	E	CV-2/ZSC	FLOW CONTROL VALVE, FISHER, 3/4", MODEL: 667
6	E	V-4	ISOLATING VALVE SERVICING FLOW CONTROL VALVE, CRANE
5	E	PSL	LOW OIL PRESSURE SWITCH, ASHCROFT, MODEL: B420S, SET AT 83.7PSI
4	E	F-1	ROSEMOUNT 1151DP COMPLETE WITH METERED RUN
3	E	V-2	GATE VALVE, CRANE
2	E	I-1	PRESSURE GAUGE, TRERICE, MODEL: 0-1400KPa
1	E	V-1	CHECK VALVE, CRANE STYLE 8367

25	N		VOLUME CHAMBER (VERTICAL 4" NIPPLE)
24	E		STEAM PRESSURE GAUGE, TRERICE, 0-200PSIG
23	E		MANUAL STEAM VALVE, JAMESBURY
22	E		DIFFERENTIAL PRESSURE SWITCH, SOR M/N 17RB-K2-M9-BIA-CS
21	N		STEAM FLEXIBLE HOSE, NPT, APPROXIMATELY 36" LONG, REFER TO NOTE
20	N		STEAM SAFETY SHUT-OFF VALVE
19	E	RV-1	STEAM/OIL DIFFERENTIAL PRESSURE REGULATOR, JORDAN 63CD
17	N		LOW PRESSURE SWITCH
16	E		STEAM TRAP

ITEM	E / N	TAG NUMBER	DESCRIPTION
------	-------	------------	-------------

ITEM	E / N	TAG NUMBER	DESCRIPTION
------	-------	------------	-------------

MATERIALS LIST - OIL TRAIN

MATERIALS LIST - ATOMIZING STEAM TRAIN

National Research Council Canada

 Administrative Services and Property Management Branch

 Conseil national de recherches Canada

 Division des services administratifs et gestion de l'immobilier

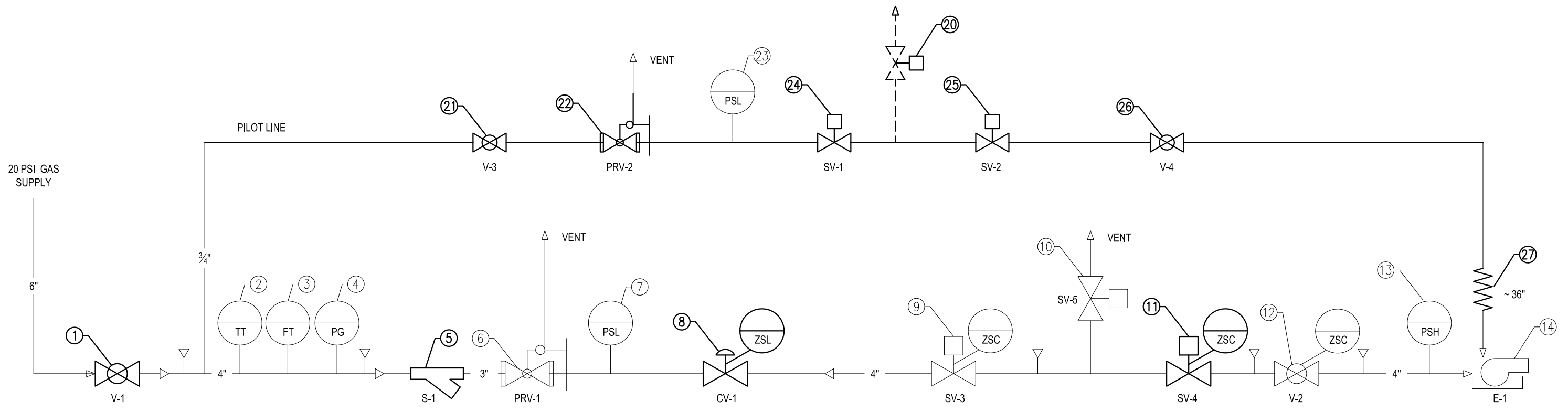
REV.	DATE	DESCRIPTION
B	AUG. 12, 2015	ISSUED FOR TENDER
A	MAR. 04, 2015	PRELIMINARY DRAWING

project
M-06 TSSA Compliance Boiler Upgrade
 MONTREAL ROAD CAMPUS

drawing
NATIONAL RESEARCH COUNCIL OF CANADA
M6 BOILER BMS UPGRADE
BOILER #1 OIL TRAIN SCHEMATIC

designed	conçu	checked	vérifié
drawn	dessiné	approved	approuvé
W.O.no.	D.T.no.	sheet	feuille
		1 of/de	1
date	date	scale	échelle
FEB 2016		N/A	
dwg.no.			dessin no.
5042-M02			





DRAWING LINE TYPES & LEGEND

	TYPICAL EXISTING
	TYPICAL NEW
	TYPICAL DEMOLITION / REMOVALS
E / N	EXISTING OR NEW COMPONENT

NOTE:

FLEXIBLE HOSE LENGTH PROVIDED IN THIS DRAWING IS APPROXIMATE DIMENSION. CONTRACTOR TO VERIFY DIMENSIONS ON SITE AND INDICATE END CONNECTION TYPES PRIOR TO ORDERING.

14	E	E-1	BURNER
13	E	PSH	UNITED ELECTRIC CONTROLS, HIGH PRESSURE SWITCH, MODEL: J6-S142B
12	E	V-2/ZSC	TEST FIRE VALVE, 4" HOMESTEAD LPV
11	N	SV-4/ZSC	MAXON SSV, 4", 5000CP, WITH LIMIT SWITCH, RATING 50PSI, CGA3.9
10	E	SV-5	ASCO N.O. VENT VALVE, 2", MODEL: 8215C083, RATING 25PSI
9	E	SV-3/ZSC	MAXON SSV, 4", 5000CP, WITH LIMIT SWITCH, RATING 50PSI, CGA3.9
8	N	CV-1/ZSL	CONTROL VALVE
7	E	PSL	UNITED ELECTRIC CONTROLS, LOW PRESSURE SWITCH, MODEL: J-120-144
6	E	PRV-1	FISHER GAS PRESSURE REGULATOR, 3", MODEL: 298 TK
5	N	S-1	STRAINER, 3"
4	E		PRESSURE GAUGE
3	E		FLOW METER
2	E		TEMPERATURE TRANSMITTER
1	N	V-1	HOMESTEAD PLUG VALVE, 6"

27	N		FLEXIBLE HOSE, 3/4", NPT, CSA APPROVED, APPROXIMATELY 36" LONG, REFER TO NOTE
26	N	V-4	3/4" BALL VALVE
25	N	SV-2	ASCO N.C. SOLENOID VALVE, 3/4", MODEL: S261SF02N3EG5, RATING: 30PSI, CGA3.9
24	N	SV-1	ASCO N.C. SOLENOID VALVE, 3/4", MODEL: S261SF02N3EG5, RATING: 30PSI, CGA3.9
23	E		UNITED ELECTRIC CONTROLS, LOW PRESSURE SWITCH, MODEL: J6-148 9522 (EXISTING TO BE RE-INSTALLED)
22	N	PRV-2	FISHER GAS PRESSURE REGULATOR, 3/4", MODEL: CS-200
21	N	V-3	3/4" BALL VALVE
20	E		REMOVE EXISTING PILOT SAFETY VENT, ASSOCIATED PIPING AND CAP

ITEM	E / N	TAG NUMBER	DESCRIPTION
------	-------	------------	-------------

ITEM	E / N	TAG NUMBER	DESCRIPTION
------	-------	------------	-------------

MATERIALS LIST - NATURAL GAS MAIN TRAIN

MATERIALS LIST - NATURAL GAS MAIN TRAIN

National Research Council Canada

 Administrative Services and Property Management Branch

 Conseil national de recherches Canada

 Division des services administratifs et gestion de l'immobilier

REV.	DATE	DESCRIPTION
B	AUG. 12, 2015	ISSUED FOR TENDER
A	MAR. 04, 2015	PRELIMINARY DRAWING

project: M-06 TSSA Compliance Boiler Upgrade

 MONTREAL ROAD CAMPUS

drawing: NATIONAL RESEARCH COUNCIL OF CANADA

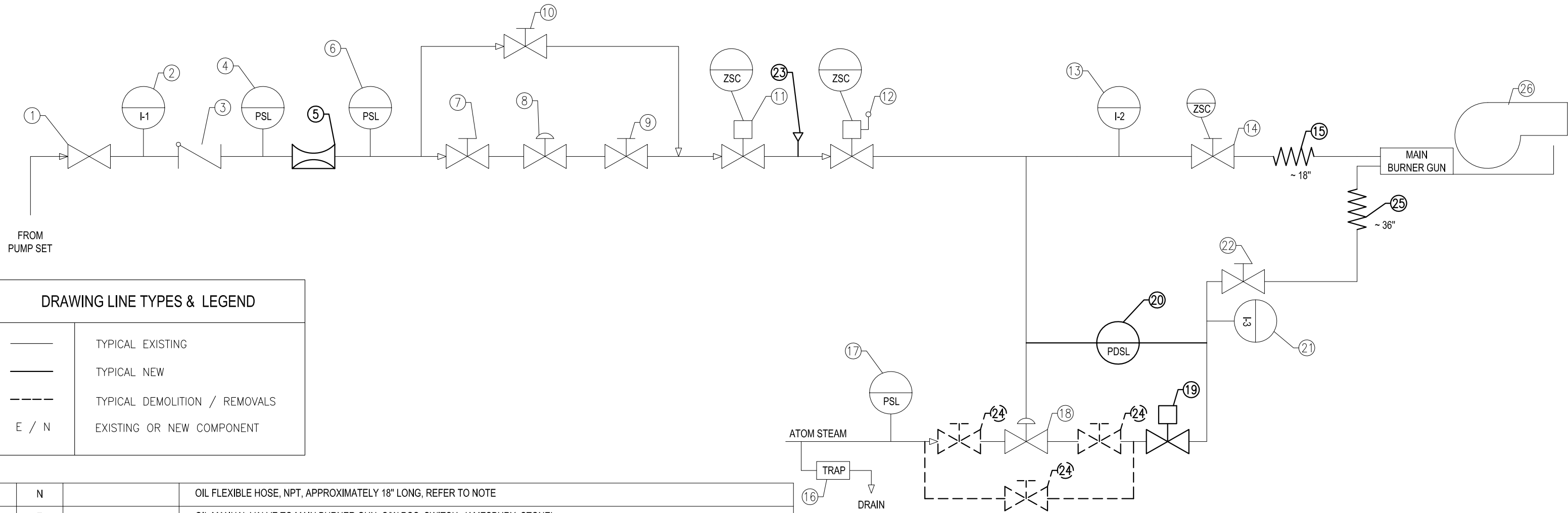
 M6 BOILER BMS UPGRADE

 BOILER #3 NATURAL GAS VALVE TRAIN SCHEMATIC

 date: FEB 2016

 scale: N/A

designed	conçu	checked	vérifié
drawn	dessiné	approved	approuvé
W.O.no.	D.T.no.	sheet	feuille
		1 of/de	1
dwg.no.	5042-M03		dessin no.



DRAWING LINE TYPES & LEGEND	
—	TYPICAL EXISTING
—	TYPICAL NEW
- - -	TYPICAL DEMOLITION / REMOVALS
E / N	EXISTING OR NEW COMPONENT

NOTE:
FLEXIBLE HOSE LENGTH PROVIDED IN THIS DRAWING IS APPROXIMATE DIMENSION. CONTRACTOR TO VERIFY DIMENSIONS ON SITE AND INDICATE END CONNECTION TYPES PRIOR TO ORDERING.

ITEM	E / N	TAG NUMBER	DESCRIPTION
15	N		OIL FLEXIBLE HOSE, NPT, APPROXIMATELY 18" LONG, REFER TO NOTE
14	E		OIL MANUAL VALVE TO MAIN BURNER GUN, C/W POS. SWITCH, JAMESBURY, STONEL
13	E		OIL PRESSURE GAUGE, WIKA 0-1100KPA
12	E		SSV, MAXON 3/4", MODEL: 7301, MANUAL RESET, C/W POS. SWITCH
11	E		SSV, MAXON 3/4", MODEL: 8730, C/W POS. SWITCH
10	E		BYPASS VALVE AROUND CONTROL VALVE, CRANE
9	E		ISOLATING VALVE FOR SERVICING FLOW CONTROL VALVE, CRANE
8	E		FLOW CONTROL VALVE, 3/4" BADGER 9001GCW363V1B17P36
7	E		ISOLATING VALVE FOR SERVICING FLOW CONTROL VALVE, CRANE
6	E		LOW OIL PRESSURE SWITCH, UE J6-354
5	N		E&H DP TRANSMITTER
4	E		LOW OIL PRESSURE SWITCH, SOR 5W-K45-N1-F2A-CS
3	E		CHECK VALVE, CRANE STYLE 8367
2	E		PRESSURE GAUGE, TRERICE, MODEL: 0-1400KPa
1	E		GATE VALVE, CRANE

ITEM	E / N	TAG NUMBER	DESCRIPTION
26	E		BURNER, PEABODY M-20
25	N		STEAM FLEXIBLE HOSE, NPT, APPROXIMATELY 36" LONG, REFER TO NOTE
24	E		BYPASS VALVES, WILL BE REMOVED
23	N		VOLUME CHAMBER (VERTICAL 4" NIPPLE)
22	E		STEAM MANUAL VALVE TO MAIN BURNER GUN, JAMESBURY
21	E		STEAM PRESSURE GAUGE, WIKA 0-1100KPA
20	N		DIFFERENTIAL PRESSURE SWITCH
19	N		STEAM SAFETY SHUT-OFF VALVE
18	E		STEAM/OIL DIFFERENTIAL PRESSURE REGULATOR, JORDAN 63CD
17	E		LOW PRESSURE SWITCH, UE J6-354
16	E		STEAM TRAP

ASPM 11x17 MATERIALS LIST - OIL TRAIN

MATERIALS LIST - ATOMIZING STEAM TRAIN



REV.	DATE	DESCRIPTION
B	AUG. 12, 2015	ISSUED FOR TENDER
A	MAR. 04, 2015	PRELIMINARY DRAWING

project
M-06 TSSA Compliance Boiler Upgrade
MONTREAL ROAD CAMPUS

project	drawing	dessin	designed	conçu	checked	vérifié
M-06 TSSA Compliance Boiler Upgrade	NATIONAL RESEARCH COUNCIL OF CANADA M6 BOILER BMS UPGRADE BOILER #3 OIL TRAIN SCHEMATIC	RM	JX	RM		
date	date	scale	échelle	sheet	feuille	dessin no.
FEB 2016		N/A		1 of/de 1		5042-M04



1
MOB MAIN 8" GAS SHUTOFF VALVE FOR REPLACEMENT
SPECIFICATION 23 00 00, ARTICLE 3.2.g



2
MOB BOILER#4 GAS SHUTOFF VALVE FOR REPLACEMENT
SPECIFICATION 23 00 00, ARTICLE 3.2.b



3
MOB BOILER#2 GAS SHUTOFF VALVE FOR REPLACEMENT
SPECIFICATION 23 00 00, ARTICLE 3.2.c



4
MOB BOILER#3 GAS SHUTOFF VALVE FOR REPLACEMENT
SPECIFICATION 23 00 00, ARTICLE 3.2.d



5
MOB BOILER#1 GAS STRAINER LOCATION
SPECIFICATION 23 00 00, ARTICLE 4.2.a



6
MOB BOILER#1 MISCELLANEOUS GAS TRAIN REPLACEMENTS
SPECIFICATION 23 00 00, ARTICLE 4.2.b & 4.2.c



7
MOB BOILER#1 GAS PILOT SAFETY VALVE REMOVAL
SPECIFICATION 23 00 00, ARTICLE 4.3.a



8
MOB BOILER#1 OIL & STEAM REPLACEMENTS & NEW WORK
SPECIFICATION 23 00 00, ARTICLE 4.4.a, 4.4.b, 4.5.a, 4.5.b & 4.5.c

ASPM 11x17

National Research Council Canada
Conseil national de recherches Canada
Administrative Services and Property Management Branch
Division des services administratifs et gestion de l'immobilier



project
M-06 TSSA Compliance Boiler Upgrade
MONTREAL ROAD CAMPUS

drawing
NATIONAL RESEARCH COUNCIL OF CANADA
AREAS OF WORK - PICTORIAL VIEWS
MAIN GAS SHUTOFF VALVES AND BOILER#1

date
FEB 2016

date
scale
N/A

échelle

dessin	designed RM	conçu	checked RM	vérifié
drawn JX	dessiné	approved	approuvé	
W.O.no.	D.T.no.	sheet 1 of/de	feuille 1	
dwg.no.	5042-M08			dessin no.



1 BOILER#3 GAS STRAINER LOCATION
M09 SPECIFICATION 23 00 00, ARTICLE 5.2.a



2 BOILER#3 CONTROL VALVE FOR REPLACEMENT
M09 SPECIFICATION 23 00 00, ARTICLE 5.2.b



3 BOILER#3 PILOT REPLACEMENT & PILOT SAFETY VENT REMOVAL
M09 SPECIFICATION 23 00 00, ARTICLE 5.2.c & 5.3.b



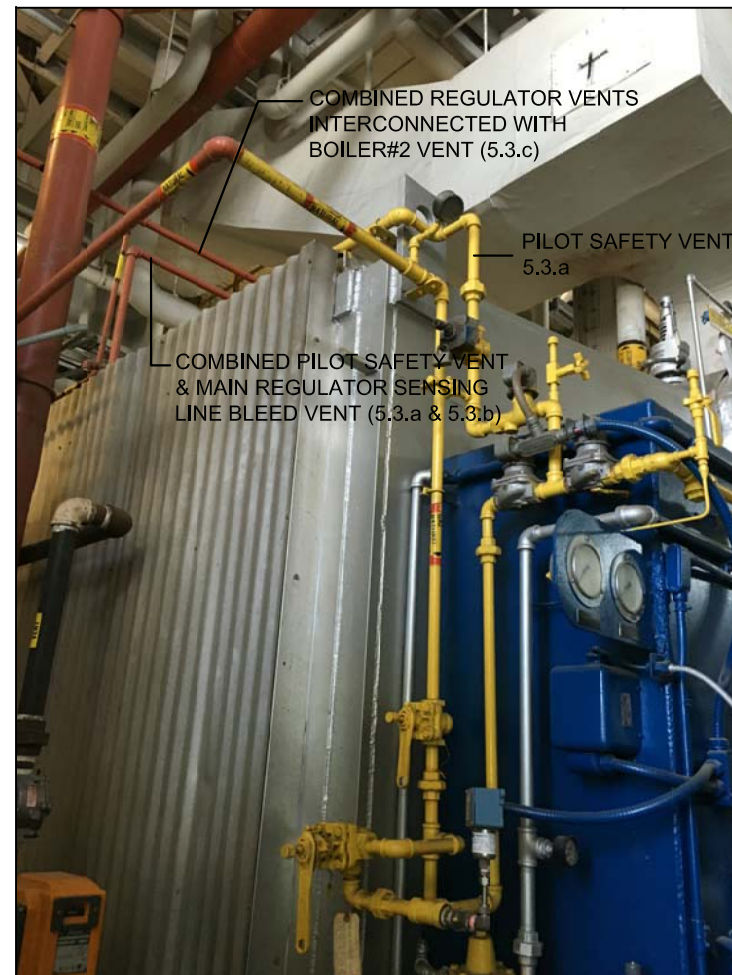
4 BOILER#3 OIL & STEAM REPLACEMENTS & NEW WORK
M09 SPECIFICATION 23 00 00, ARTICLE 5.2.d, 5.4.a, 5.4.b, 5.4.c, 5.4.d & 5.5.a, 5.5.b, 5.5.c & 5.5.d



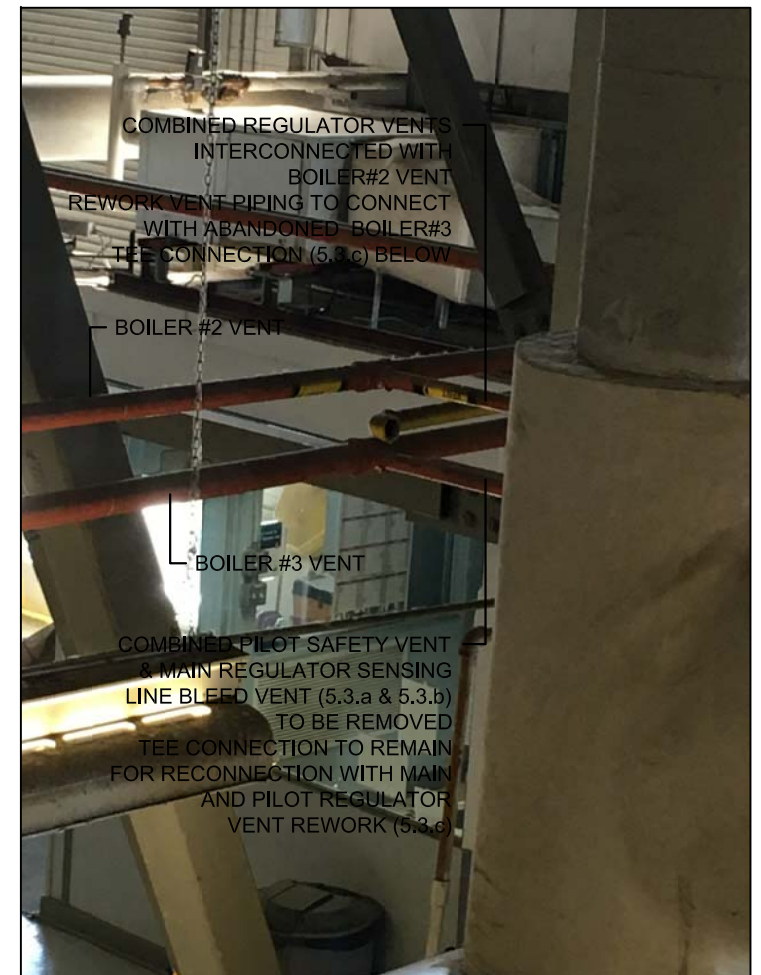
5 BOILER#3 MAIN REGULATOR & VENTS
M09 SPECIFICATION 23 00 00, ARTICLE 5.3.b



6 BOILER#3 PILOT REGULATOR & VENTS
M09 SPECIFICATION 23 00 00, ARTICLE 5.3.a, 5.3.b & 5.3.c



7 BOILER#3 PILOT SAFETY VENT & MISCELLANEOUS VENTS
M09 SPECIFICATION 23 00 00, ARTICLE 5.3.a, 5.3.b & 5.3.c



8 BOILER#2/BOILER#3 VENTS & INTERCONNECTION
M09 SPECIFICATION 23 00 00, ARTICLE 5.3.a, 5.3.b & 5.3.c

ASPM 11x17

National Research Council Canada
Conseil national de recherches Canada
Administrative Services and Property Management Branch
Division des services administratifs et gestion de l'immobilier

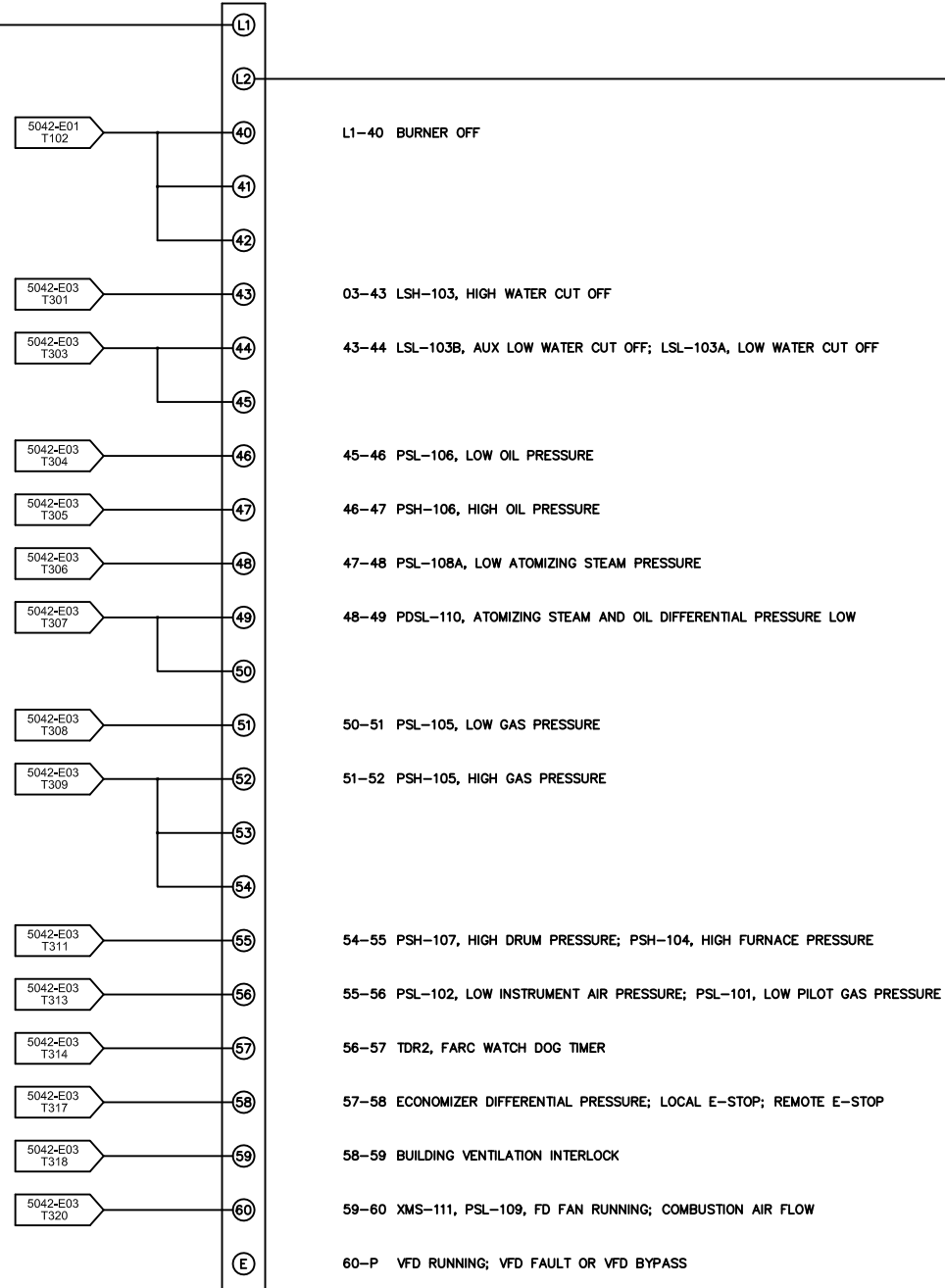


project	project	drawing	dessin	designed	conçu	checked	vérifié
M-06 TSSA Compliance Boiler Upgrade		NATIONAL RESEARCH COUNCIL OF CANADA AREAS OF WORK - PICTORIAL VIEWS BOILER#3		RM			
date	date	scale	échelle	drawn	dessiné	approved	approuvé
FEB 2016		N/A		JX		RM	
MONTREAL ROAD CAMPUS				W.O.no.	D.T.no.	sheet	feuille
				1 of/de 1		1	
				dwg.no.	dessin no.		
				5042-M09			

L

N

FIREYE YZ300 EXPANSION MODULE YZ300 CONFIGURATION



PROGRAMMER PARAMETERS

PARAMETER	SETTING
PROGRAMMER	YP102
AMP	DC
FLM FAIL TIME	2s
PURGE	2:00
CNT METHOD	DOWN
PROVE 3-P OPEN	NO
PTFIMTFI TIMING	10/10*10/10
TERMINAL 6	INTRP
PROVE M-B OPEN	NO
PROVE M-D OPEN	NO
POST PURGE	0:15
M-D WAIT 10m	YES
PROVE M-D TFI	YES
BAUD RATE	9600
UNIT ADDRESS	1
LOCK SETTINGS	NO

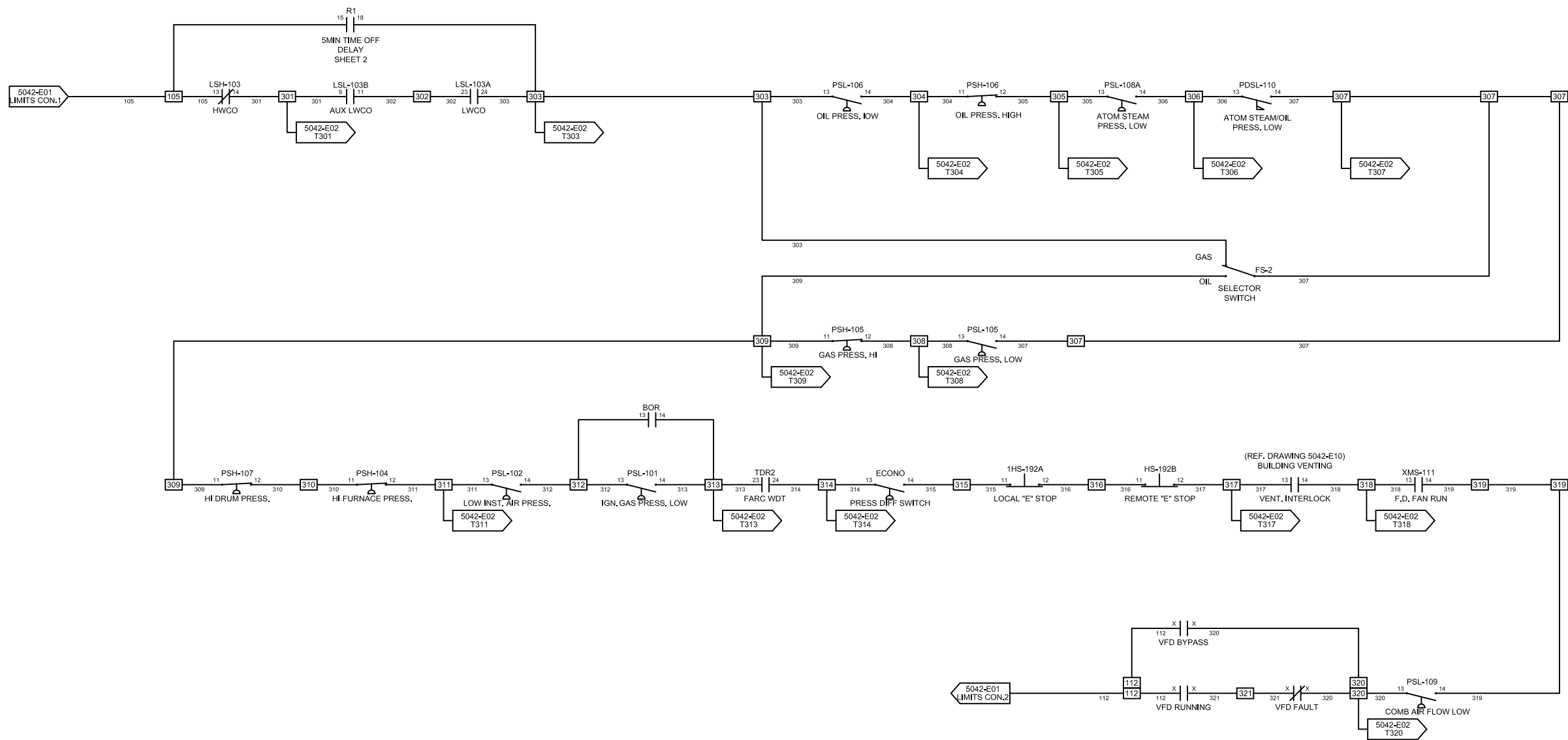
NOTE: THESE FUNCTIONS BECOME PERMANENT AFTER THE CONTROL HAS BEEN POWERED FOR EIGHT (8) HOURS.

HS-103
BLOW DOWN BYPASS
23 24
201 201

A1 R1 A2
AB
700-FSD3: U23
SETTING: 5MIN
ONE SHOT RELAY

ASPM 11x17

<p>National Research Council Canada Conseil national de recherches Canada Administrative Services and Property Management Branch Division des services administratifs et gestion de l'immobilier</p>			project	project	drawing	dessin	designed	conçu	checked	vérifié
			M-06 TSSA Compliance Boiler Upgrade		NATIONAL RESEARCH COUNCIL OF CANADA M6 BOILER BMS UPGRADE - BOILER #1 BMS WIRING DIAGRAM ANNUNCIATOR CONNECTION		RM			
	B	AUG. 12, 2015	ISSUED FOR TENDER				JX			
	A	JUN. 04, 2015	PRELIMINARY DRAWING							
REV.	DATE	DESCRIPTION	MONTREAL ROAD CAMPUS		date	date	scale	échelle	dwg.no.	dessin no.
					JUN. 04, 2015		NA		5042-E02	1 of/de 1



ASPM 11x17

National Research Council Canada
 Conseil national de recherches Canada
 Administrative Services and Property Management Branch
 Division des services administratifs et gestion de l'immobilier

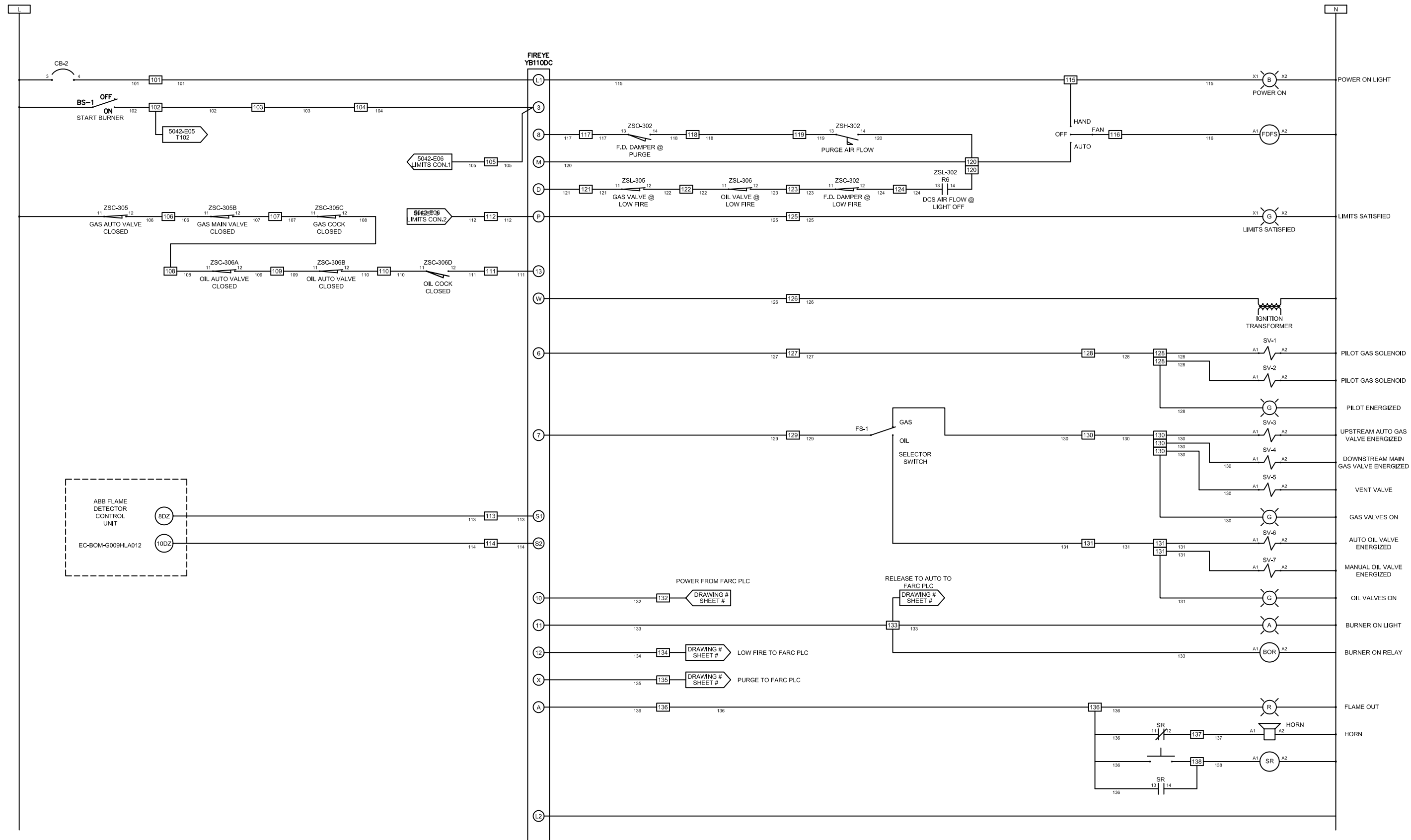
REV.	DATE	DESCRIPTION
B	AUG. 12, 2015	ISSUED FOR TENDER
A	JUN. 04, 2015	PRELIMINARY DRAWING

project
M-06 TSSA Compliance Boiler Upgrade
 MONTREAL ROAD CAMPUS

drawing
**NATIONAL RESEARCH COUNCIL OF CANADA
 M6 BOILER BMS UPGRADE - BOILER #1 BMS WIRING DIAGRAM
 LIMITS**

date **JUN. 04, 2015** scale **NA** échelle

designed	conçu	checked	vérifié
RM			
drawn	dessiné	approved	approuvé
JX			
W.O.no.	D.T.no.	sheet	feuille
		1 of/de 1	
dwg.no.	5042-E03		dessin no.



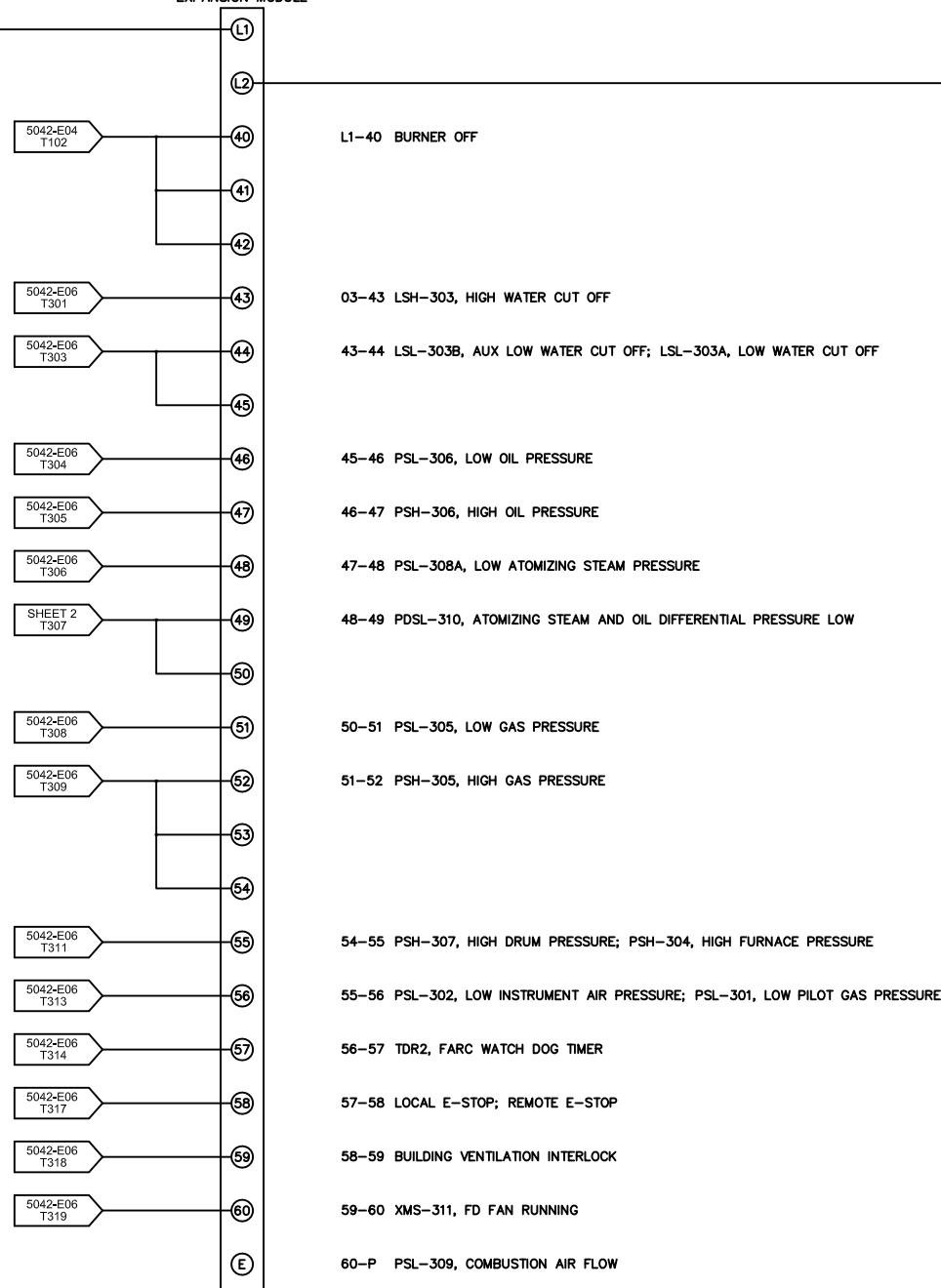
ASPM 11x17

 National Research Council Canada Administrative Services and Property Management Branch Conseil national de recherches Canada Division des services administratifs et gestion de l'immobilier			project	project	drawing	dessin	designed	conçu	checked	vérifié
			M-06 TSSA Compliance Boiler Upgrade		NATIONAL RESEARCH COUNCIL OF CANADA M6 BOILER BMS UPGRADE - BOILER #3 BMS WIRING DIAGRAM FIREYE CONNECTION		RM			
	B	AUG. 12, 2015	ISSUED FOR TENDER							
	A	JUN. 04, 2015	PRELIMINARY DRAWING							
	REV.	DATE	DESCRIPTION	MONTREAL ROAD CAMPUS	date	scale	échelle	dwg.no.	sheet	feuille
					JUN. 04, 2015	NA		5042-E04	1 of/de 1	

L

N

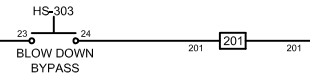
FIREYE YZ300 EXPANSION MODULE YZ300 CONFIGURATION



PROGRAMMER PARAMETERS

PARAMETER	SETTING
PROGRAMMER	YP102
AMP	DC
FLM FAIL TIME	2s
PURGE	2:00
CNT METHOD	DOWN
PROVE 3-P OPEN	NO
PTF1*MTF1 TIMING	10/10*10/10
TERMINAL 6	INTRP
PROVE M-8 OPEN	NO
PROVE M-D OPEN	NO
POST PURGE	0:15
M-D WAIT 10m	YES
PROVE M-D TFI	YES
BAUD RATE	9600
UNIT ADDRESS	1
LOCK SETTINGS	NO

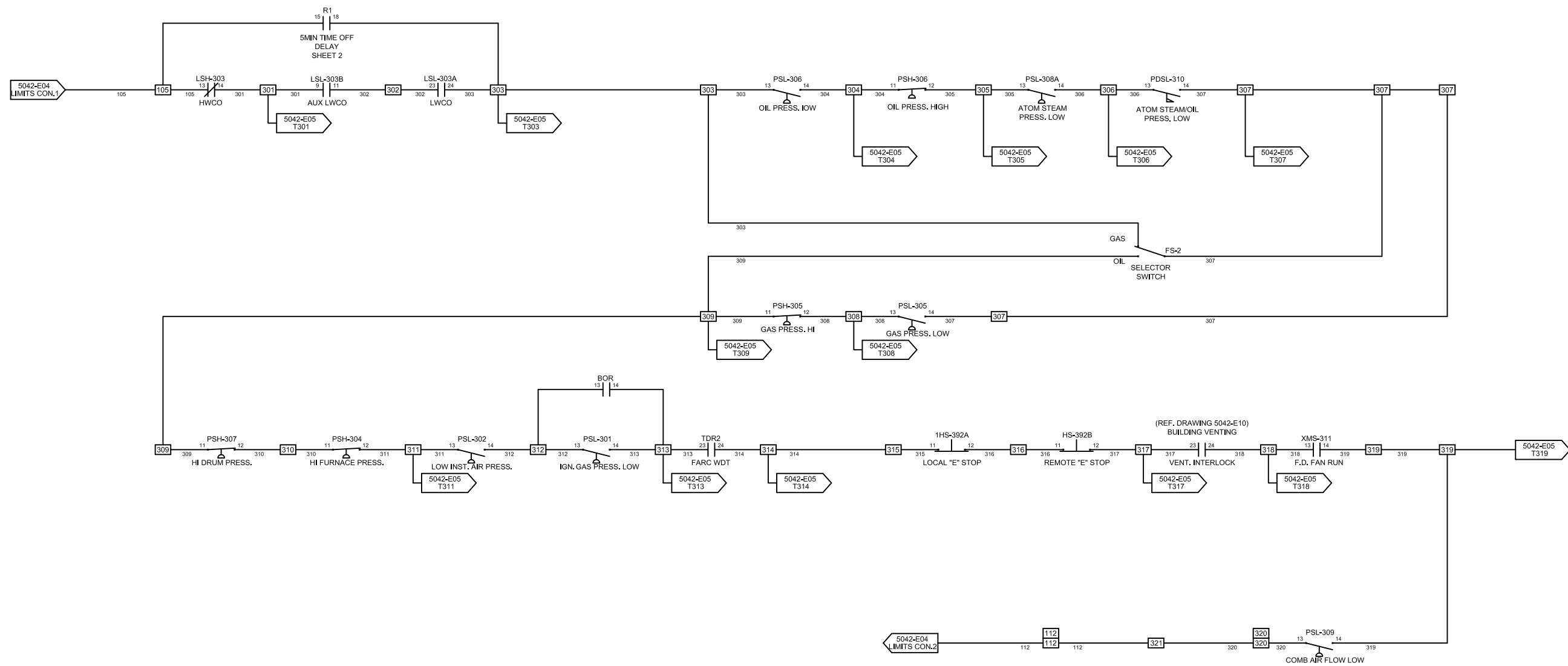
NOTE: THESE FUNCTIONS BECOME PERMANENT AFTER THE CONTROL HAS BEEN POWERED FOR EIGHT (8) HOURS.



A1 R1 A2
 AB
 700-FSD3 U23
 SETTING: 5MIN
 ONE SHOT RELAY

ASPM 11x17

<p>National Research Council Canada Administrative Services and Property Management Branch</p> <p>Conseil national de recherches Canada Division des services administratifs et gestion de l'immobilier</p>			project	project	drawing	dessin	designed	conçu	checked	vérifié
			M-06 TSSA Compliance Boiler Upgrade		NATIONAL RESEARCH COUNCIL OF CANADA M6 BOILER BMS UPGRADE - BOILER #3 BMS WIRING DIAGRAM ANNUNCIATOR CONNECTION	RM	drawn	dessiné	approved	approuvé
	B	AUG. 12, 2015	ISSUED FOR TENDER				W.O.no.	D.T.no.	sheet	feuille
	A	JUN. 04, 2015	PRELIMINARY DRAWING	MONTREAL ROAD CAMPUS	date	date	scale	échelle	dwg.no.	dessin no.
REV.	DATE	DESCRIPTION			JUN. 04, 2015	NA		5042-E05	1 of/ de 1	



ASPM 11x17

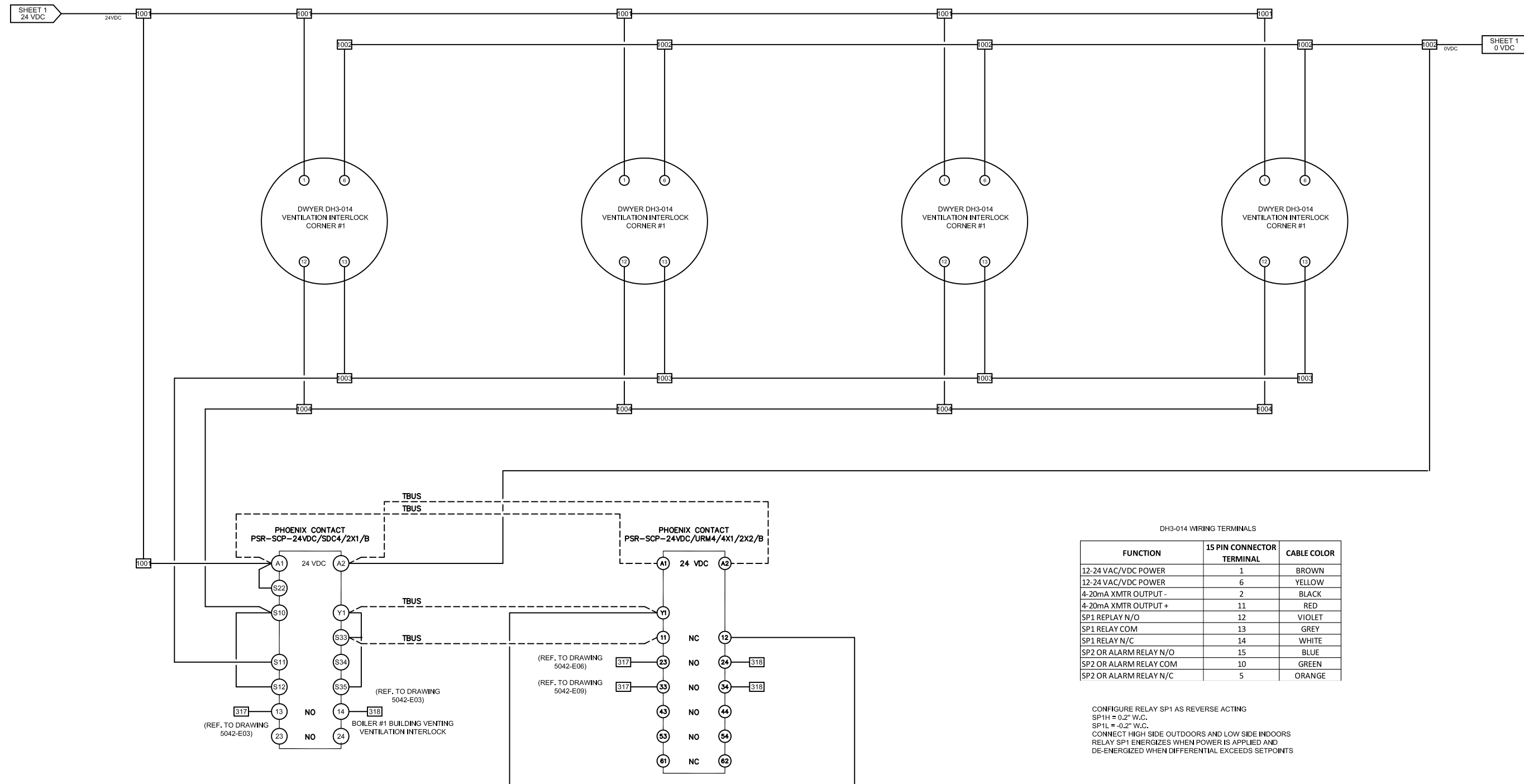
National Research Council Canada
 Conseil national de recherches Canada
 Administrative Services and Property Management Branch
 Division des services administratifs et gestion de l'immobilier

REV.	DATE	DESCRIPTION
B	AUG. 12, 2015	ISSUED FOR TENDER
A	JUN. 04, 2015	PRELIMINARY DRAWING

project
M-06 TSSA Compliance Boiler Upgrade
 MONTREAL ROAD CAMPUS

drawing
NATIONAL RESEARCH COUNCIL OF CANADA
M6 BOILER BMS UPGRADE - BOILER #3 BMS WIRING DIAGRAM LIMITS

designed	conçu	checked	vérifié
drawn	dessiné	approved	approuvé
W.O.no.	D.T.no.	sheet	feuille
		1 of/de	1
date	date	scale	échelle
JUN. 04, 2015		NA	
dwg.no.	dessin no.		
5042-E06			



DH3-014 WIRING TERMINALS

FUNCTION	15 PIN CONNECTOR TERMINAL	CABLE COLOR
12-24 VAC/VDC POWER	1	BROWN
12-24 VAC/VDC POWER	6	YELLOW
4-20mA XMTR OUTPUT -	2	BLACK
4-20mA XMTR OUTPUT +	11	RED
SP1 REPLAY N/O	12	VIOLET
SP1 RELAY COM	13	GREY
SP1 RELAY N/C	14	WHITE
SP2 OR ALARM RELAY N/O	15	BLUE
SP2 OR ALARM RELAY COM	10	GREEN
SP2 OR ALARM RELAY N/C	5	ORANGE

CONFIGURE RELAY SP1 AS REVERSE ACTING
 SP1H = 0.2" W.C.
 SP1L = -0.2" W.C.
 CONNECT HIGH SIDE OUTDOORS AND LOW SIDE INDOORS
 RELAY SP1 ENERGIZES WHEN POWER IS APPLIED AND
 DE-ENERGIZED WHEN DIFFERENTIAL EXCEEDS SETPOINTS

ASPM 11x17

<p>National Research Council Canada Conseil national de recherches Canada Administrative Services and Property Management Branch Division des services administratifs et gestion de l'immobilier</p>			project	projet	drawing	dessin	designed	conçu	checked	vérifié
			M-06 TSSA Compliance Boiler Upgrade		NATIONAL RESEARCH COUNCIL OF CANADA M6 BOILER BMS UPGRADE - BOILER BMS WIRING DIAGRAM VENTILATION INTERLOCK WIRING DIAGRAM		RM			
							JX			
	B	AUG. 12, 2015	ISSUED FOR TENDER							
	A	JUN. 04, 2015	PRELIMINARY DRAWING							
	REV.	DATE	DESCRIPTION	MONTREAL ROAD CAMPUS	date	date	scale	échelle	dwg.no.	sheet
					JUN. 04, 2015		NA		5042-E10	1 of/de 1