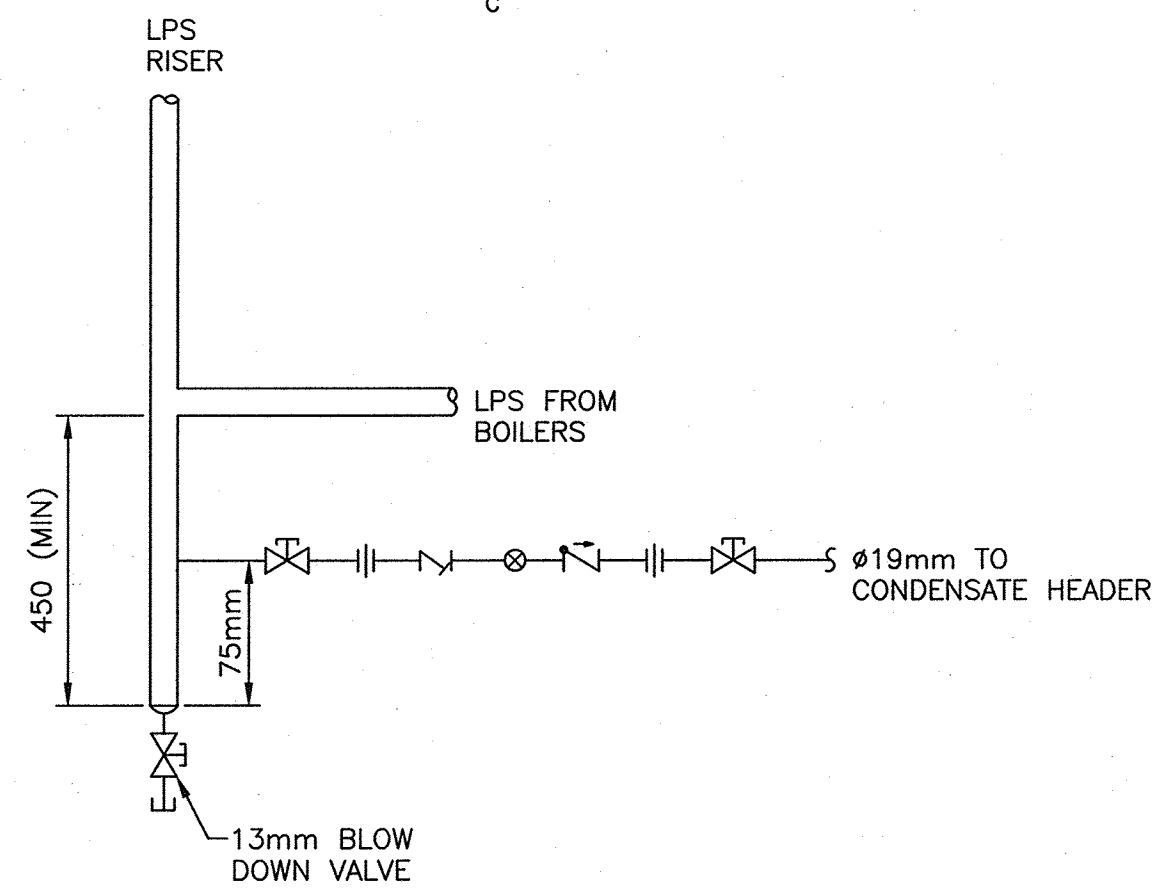
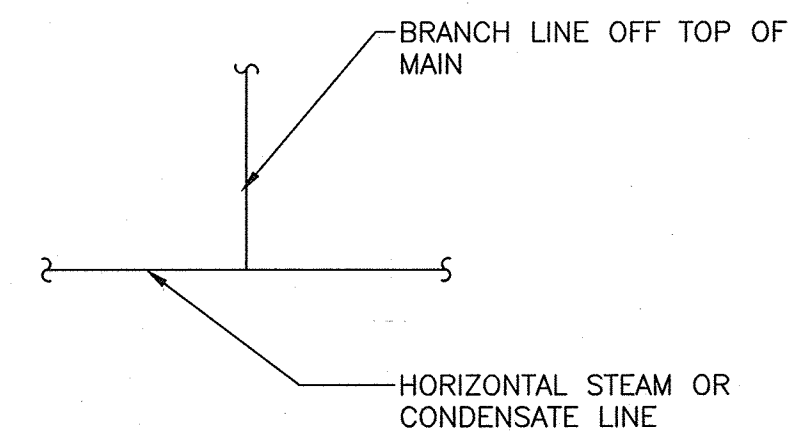


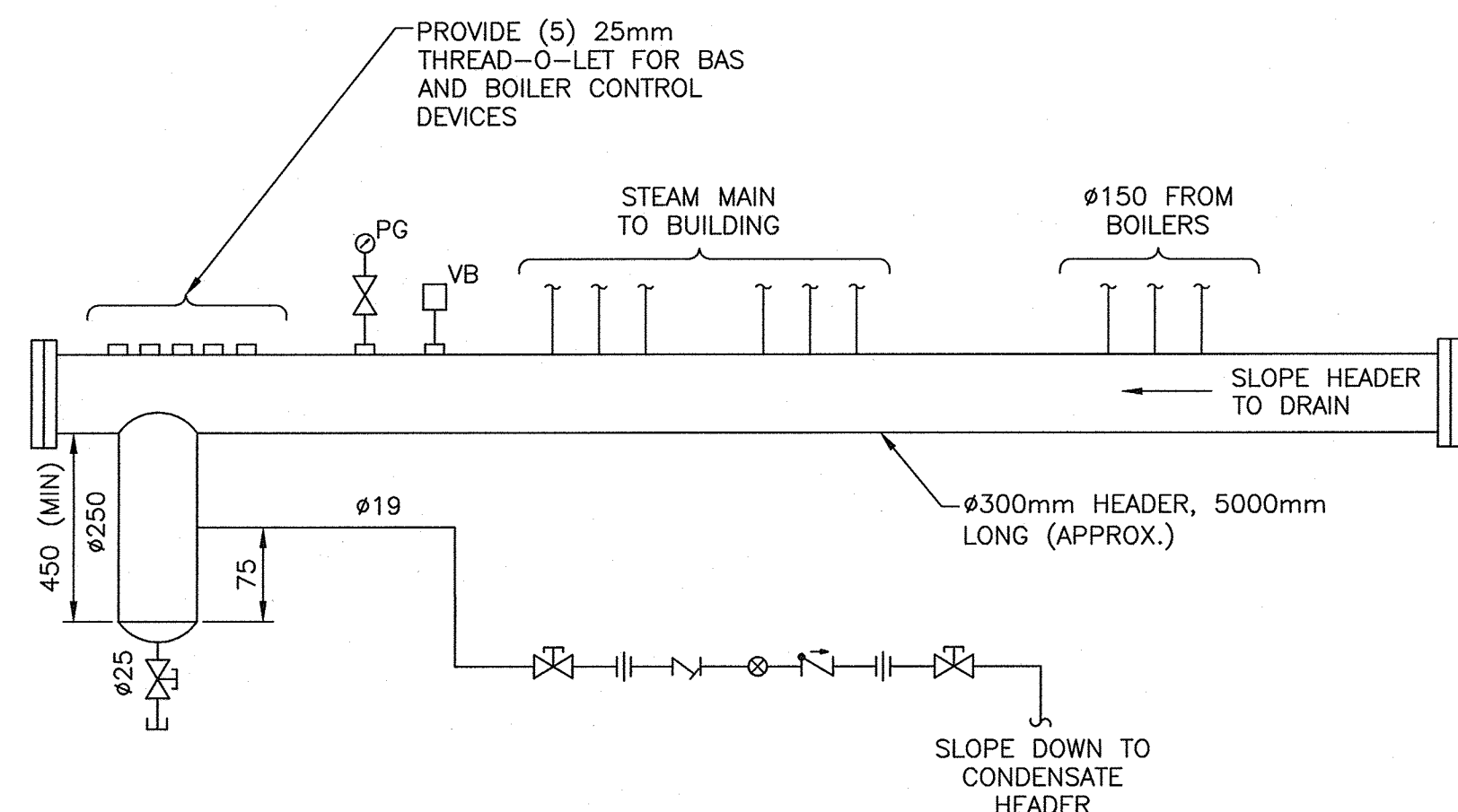
DETAIL - STEAM PRESSURE REDUCING VALVE STATION 13
SCALE : N.T.S. M 05



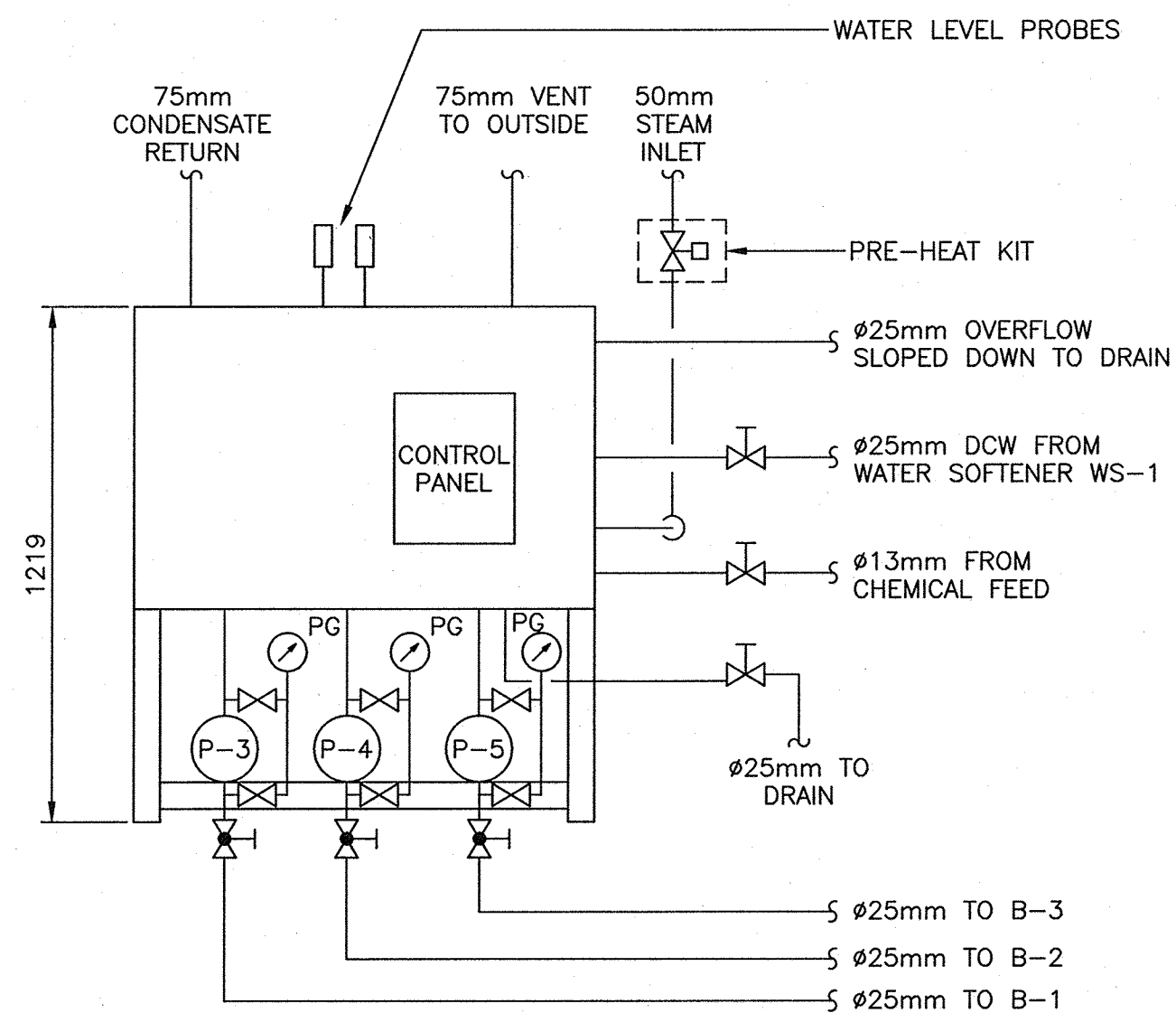
DETAIL - RISER STEAM TRAP (TYP)
SCALE : N.T.S.



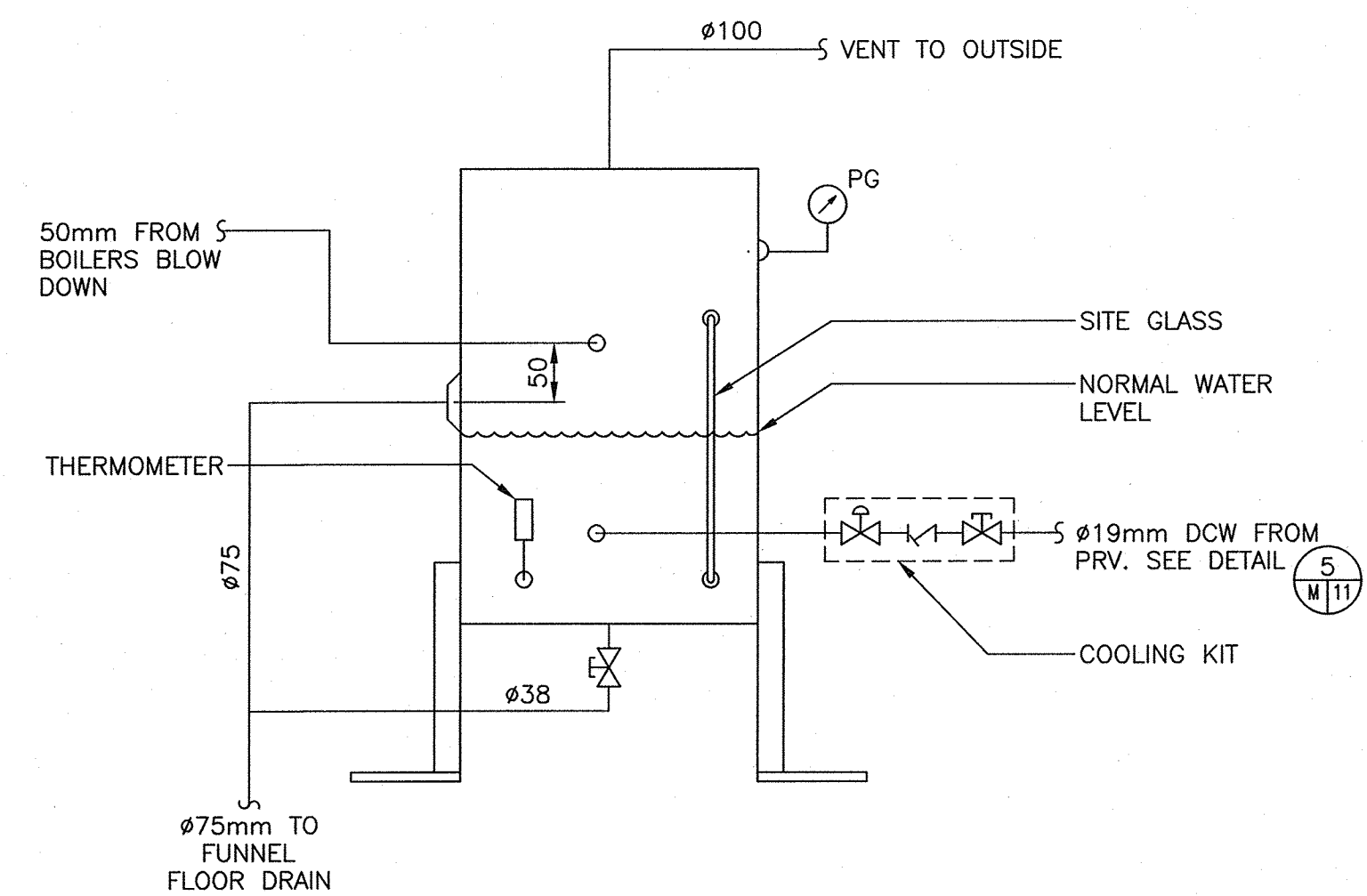
DETAIL - STEAM/CONDENSATE BRANCH LINE (TYP)
SCALE : N.T.S.



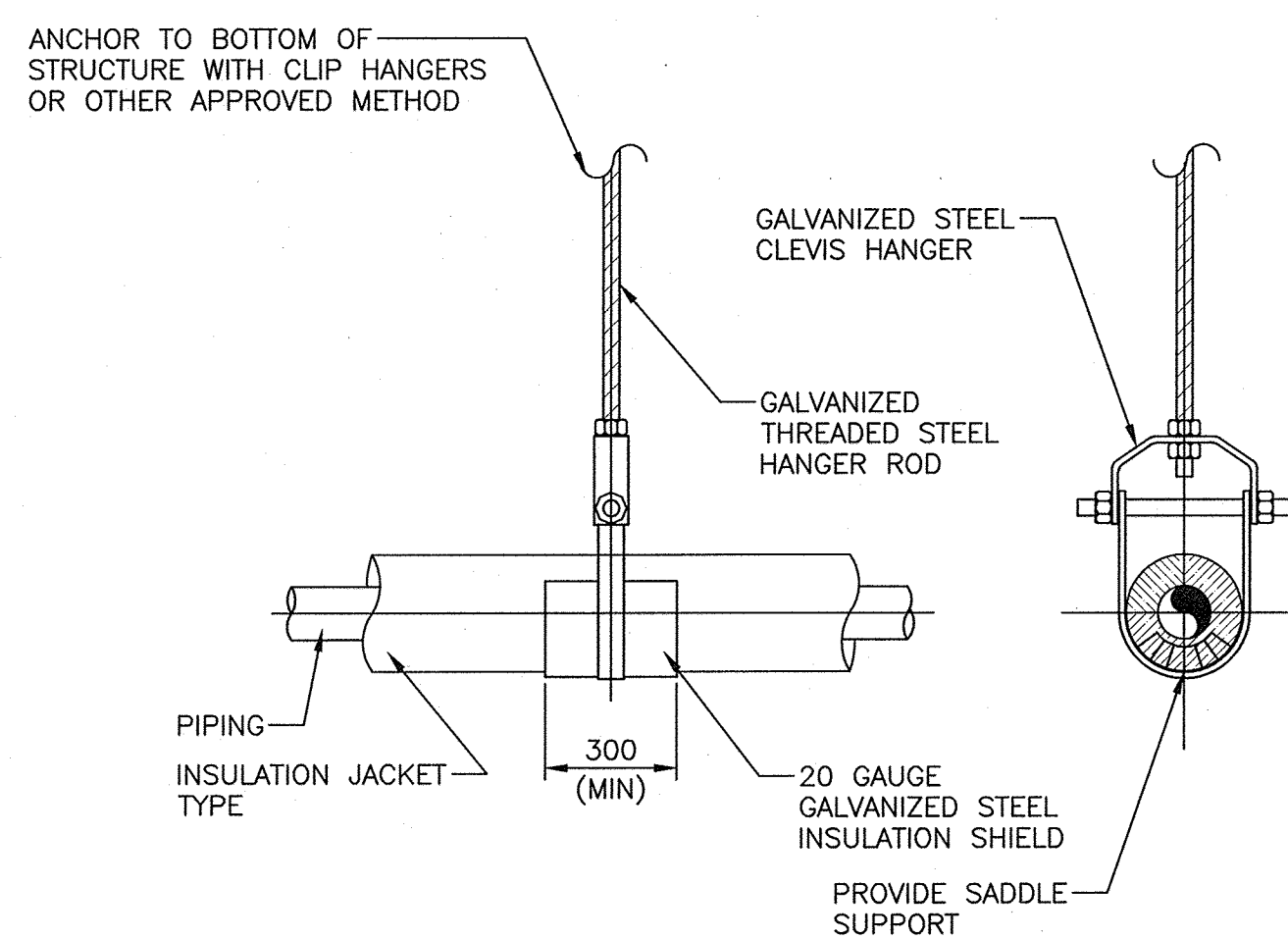
DETAIL - STEAM HEADER 2
SCALE : N.T.S. M 05



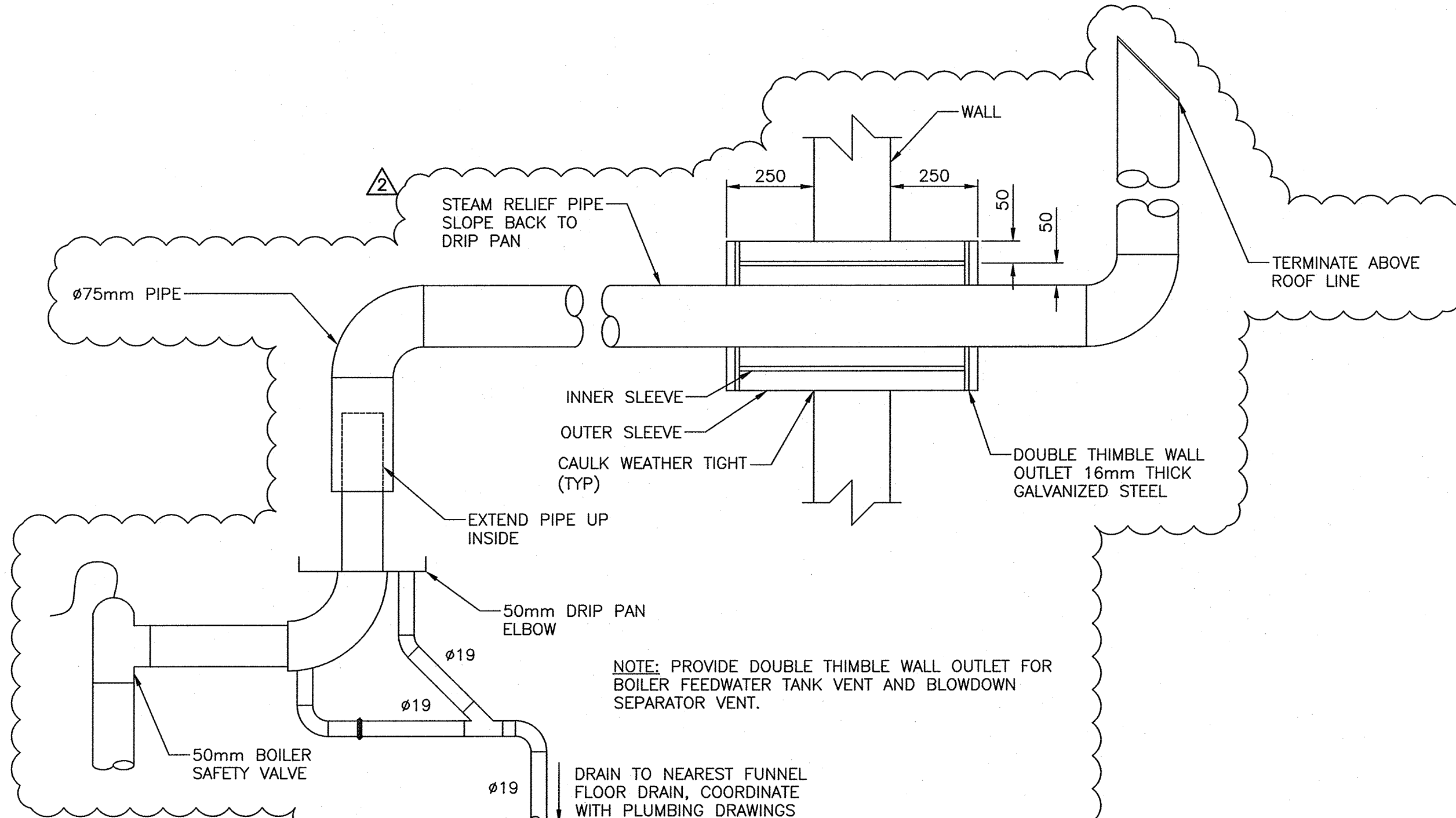
DETAIL - FEED WATER RETURN TANK INSTALLATION 3 3
SCALE : N.T.S. M 05 M 07



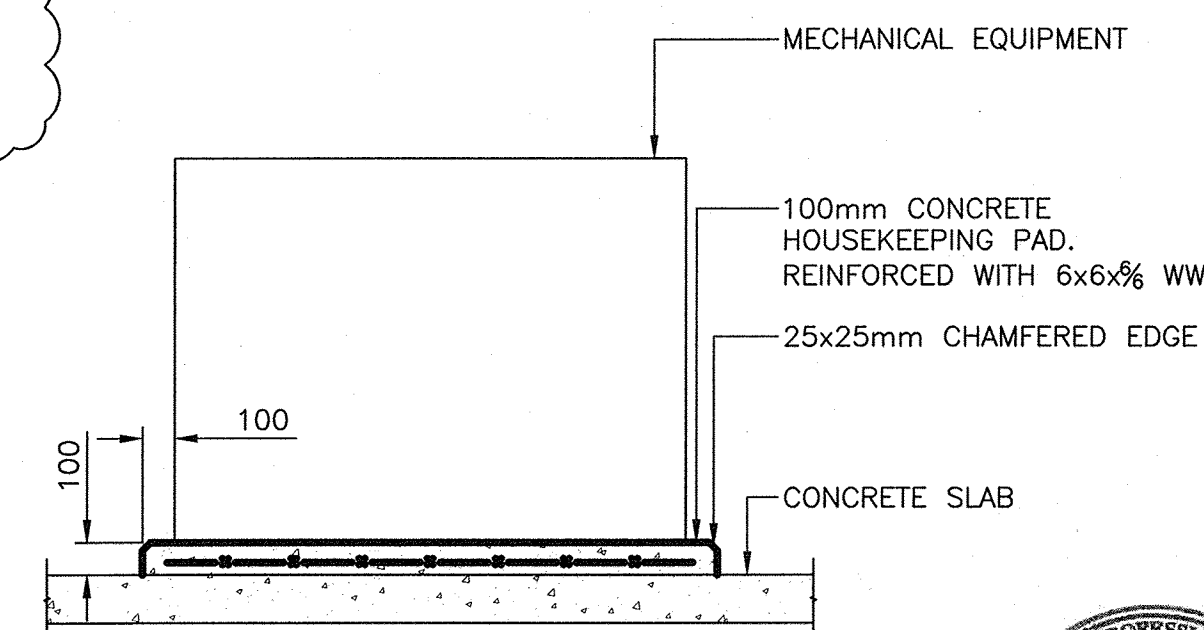
DETAIL - BLOW OFF SEPARATOR INSTALLATION 4 4
SCALE : N.T.S. M 07 M 05



DETAIL - PIPE SUPPORT (TYP)
SCALE : N.T.S.



DETAIL - DRAIN PAN ELBOW (TYP OF 3)
SCALE : N.T.S.



DETAIL - HOUSEKEEPING PAD (TYP)
SCALE : N.T.S.

- NOTES
1. CONCRETE TO CAN/CSA-A23.1-04 WITH F'C= 25 MPA AT 28 DAYS
 2. HOUSEKEEPING PAD REQUIRED FOR (3) BOILERS, FEEDWATER TANK, BLOW DOWN TANK, DUPLEX FUEL PUMP



PROVINCE OF NEWFOUNDLAND AND LABRADOR
PERMIT HOLDER
EASTPOINT ENGINEERING LTD.
To practice Professional Engineering in Newfoundland and Labrador Permit No. as issued by P.E.S.L. which is valid for the year 2016

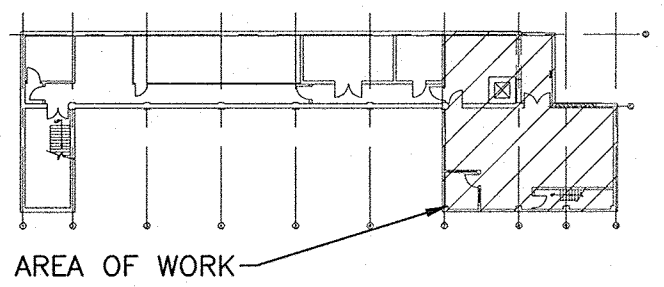


SITE PLAN:



ST. JOHN'S RESEARCH AND DEVELOPMENT CENTRE

KEY PLAN:



| revisions | date |
|-----------|-----------------------------|
| 2 | ADDENDUM #12 S. de |
| 1 | ISSUED FOR TENDER (UPDATES) |
| 0 | ISSUED FOR TENDER |
| B | ISSUED FOR TENDER COSTING |
| A | ISSUED FOR 99% |
| revisions | date |
| project | project |

ST. JOHN'S RESEARCH & DEVELOPMENT CENTRE
308 BROOKFIELD RD, BLDG 25
NEWFOUNDLAND A1E 0B2
BOILER PLANT REPLACEMENT

MECHANICAL HEATING DETAILS

| | |
|----------------------|---------------------------------|
| designed S.F. | conçu |
| date NOV. 2015 | |
| drawn Q.H.S. | dessiné |
| date NOV. 2015 | |
| approved N.T. | approuvé |
| date NOV. 2015 | |
| Tender | Submission |
| 2016-03-30 | |
| PWGC Project Manager | Administrateur de projets TPSCG |
| project number | no. du projet |
| R.078138.001 | |
| drawing no. | no. du dessin |
| M-10 | |