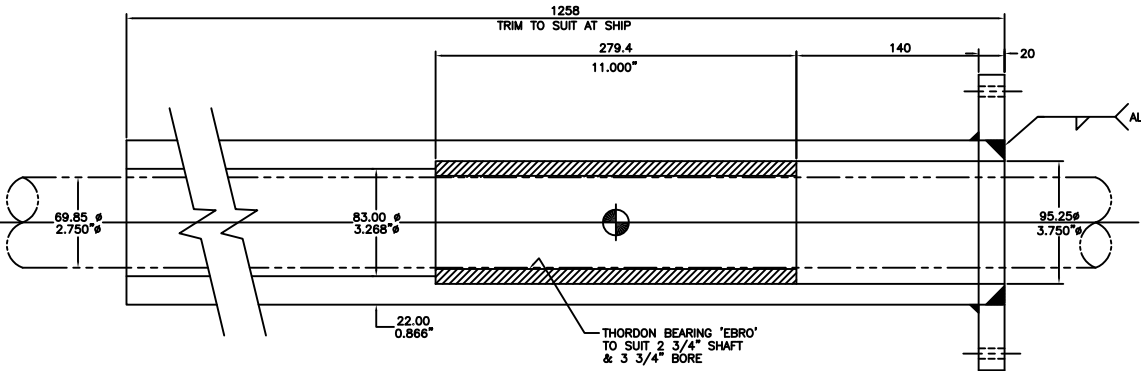
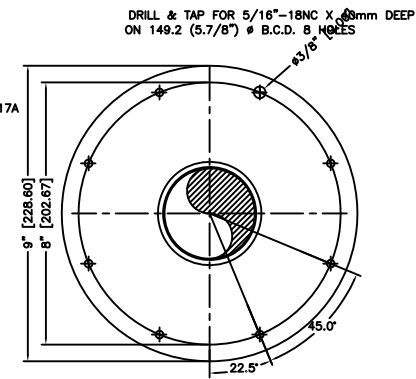


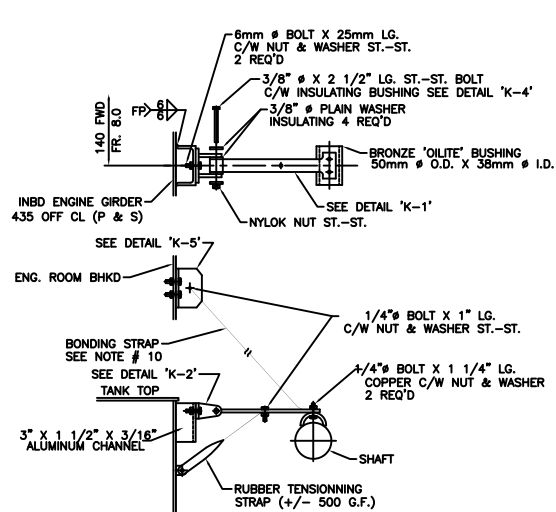
DETAIL 'A'
STRUT BOSSING & AFT BEARING
SCALE 1:2



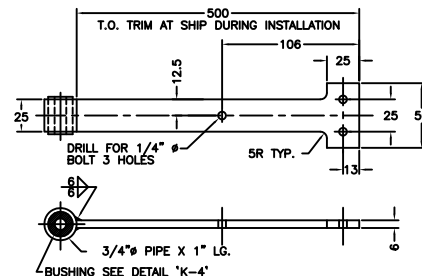
DETAIL 'B'
STERN TUBE
127mm O.D. 22mm WALL
6061-T6 ALUMINUM TUBE
SCALE 1:2



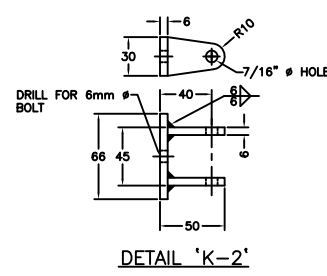
REFERENCE DRAWINGS		
ITEM	DWG. NO	TITLE
1	191-100-01	STRUCTURAL DETAILS - RUDDER STOCK ASSY & PORTS
2	191-100-02	RUDDER & STOCK
3	191-100-05	STRUCTURAL DETAILS 'A' BRACKETS
4	RT-1399-10/F	15RT COUPLING OUTLINE ASSEMBLY



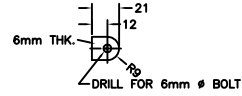
DETAIL 'K'
GROUNDING BRUSH
SCALE 1:5



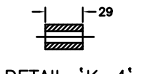
DETAIL 'K-1'
SUPPORT ARM
ST-STEEL
SCALE 1:2



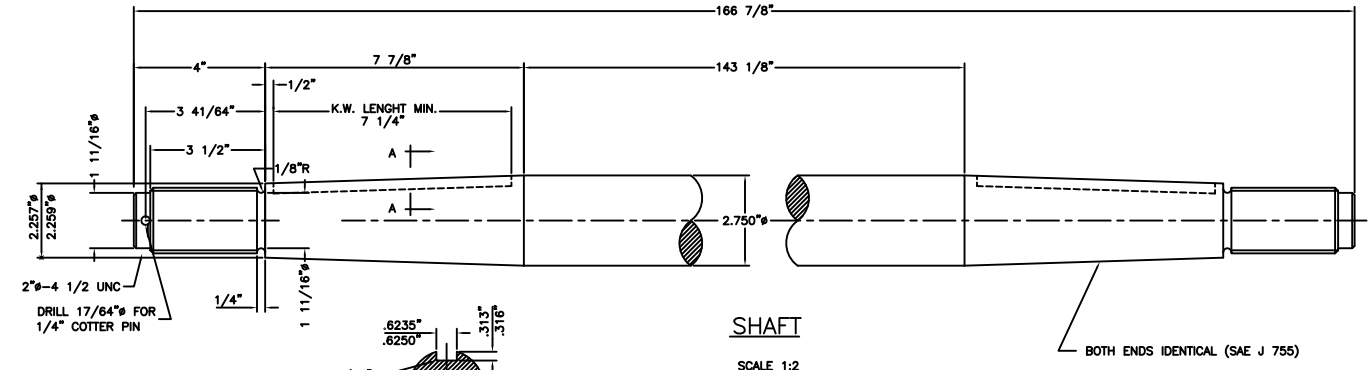
DETAIL 'K-2'
END BRACKET
ALUMINUM
SCALE 1:2



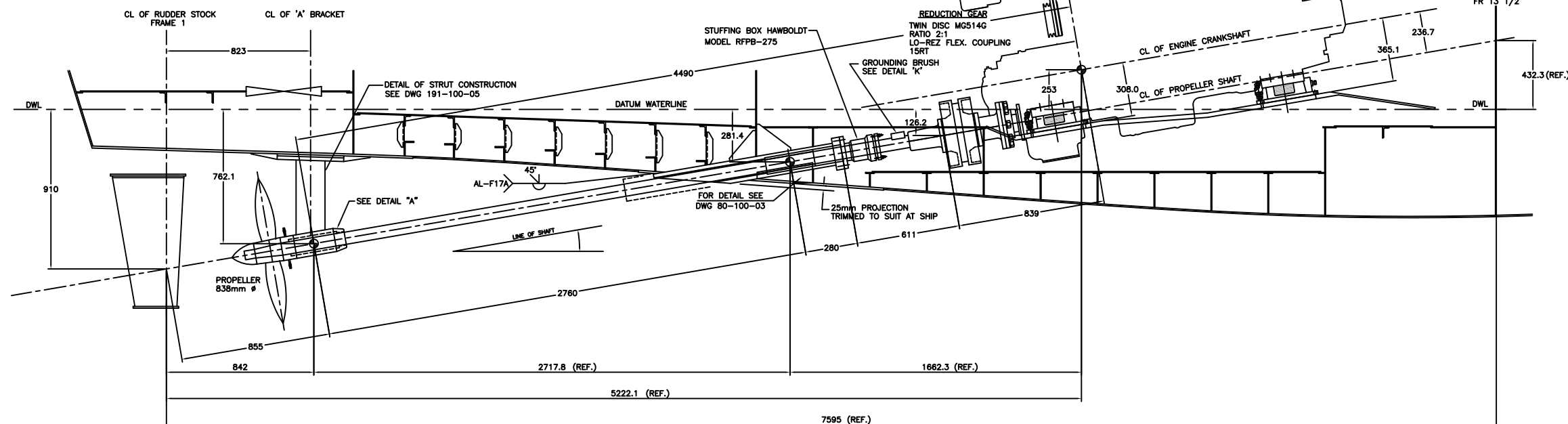
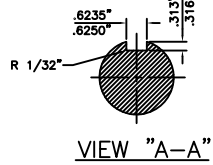
DETAIL 'K-3'
TENSIONING STRAP BRACKET
ALUMINUM
SCALE 1:2



DETAIL 'K-4'
INSULATING BUSHING
.750\"/>



SHAFT
SCALE 1:2



PORT PROFILE

STBD SIDE SIMILAR BUT OPPOSITE

NOTES

- THIS DRAWING CONTAINS DETAILS FOR ONE SHAFT ONLY (PORT SIDE) STBD SIDE SIMILAR BUT OPPOSITE.
- BEARING FIT TOLERANCES AS PER MANUFACTURER RECOMMENDATIONS (THORDON)
- STERN TUBE TO BE FINALLY BORED AFTER WELDING INTO SHIP'S STRUCTURE.
- STERN TUBE TO BE MADE FROM 127mm (5") O.D. X 76.2 mm (3") I.D. ALUMINUM TUBE. STERN TUBE TO BE MACHINED AS PER DRAWING.
- SHAFT SHALL BE MACHINED I.W.O. OF BEARINGS AS SPECIFIED BY BEARING MANUFACTURER (THORDON) REF. RMS 16-32 MICRO-INCH MAX.
- SEE REF. NO. 4 FOR DETAILS OF FLEXIBLE SHAFT COUPLING ASSEMBLY AS SUPPLIED BY LO-REZ.
- 'A' BRACKET DETAILS ARE SHOWN ON DWG. REF. NO. 3
- RUDDER STOCK & RUDDER ARE SHOWN ON REF.REF DWG. NO. 1
- SHAFT GROUNDING BRUSH SHALL BE INSTALLED AT SHIP TO ENSURE PROPER ALIGNMENT WITH SHAFT.
- GROUNDING WIRES SHALL BE 8 GAGE INSULATED SINGLE CONDUCTOR STAINLESS STEEL STRAP
- BRUSH STRAP ANCHOR POINT TO BE LOCATED ON ENGINE ROOM BULKHEAD ABOVE NORMAL BILGE WATER LEVELS.
- SHAFT MATERIAL TO BE "AQUAMET 22"
- FWD NUT TO BE JAM NUT AND CASTEL NUT 2# X 4 1/2 NC

REVISIONS			
NO	DESCRIPTION	DATE	PAR
2	AS-FITTED	07-25-95	DR
1	DWG. ADDED ON K.W.	20-03-95	DR
1	DESCRIPTION	DATE	PAR
INDUSTRIES RAYMOND (1989) INC.			
SEPT-ILES, QUE.			
CANADIAN COAST GUARD			
SHAFTING ARRANGEMENT			
DESIGNED BY	C.BLACKBURN/DR	DATE	11 NOV. 94
APPROVED BY	Y.M. COTE	DATE	190-1004 02
SCALE	1=10	HULL	6 & 7
NO.	190-100-04	02	

AS-FITTED