



Royal Canadian Mounted Police
Gendarmerie royale du Canada

Doc. no: G.S. 1045-313
Date: 2016-02-26

Specification

Jackets and Trousers, Motorcycle

This document has 45 pages including the drawings.

This document was created in English.

The document is available in English and French.

English/Anglais
Français/French

The photograph on this page is for reference only.

RCMP VIEWING SAMPLE

A viewing sample, when available, will be supplied to the successful bidder.

This will be used for the guidance of the manufacturer in all factors not covered by this specification or referred to therein. Variation from the specification may appear in the sample in which case the specification shall govern.

It may be obtained from:

Royal Canadian Mounted Police
ATTN: Uniform and Equipment Program
(440 Coventry Road, Warehouse Building)
1200 Vanier Parkway
Ottawa, Ontario
K1A 0R2

It will be sent “prepaid” and is to be returned “prepaid”.

The viewing sample shall be returned to the RCMP in the same condition as received by the manufacturer. Lost or damaged viewing samples shall be replaced by an identical item or the RCMP shall be reimbursed for the cost of an acceptable replacement.

SPECIFICATION

JACKETS AND TROUSERS, MOTORCYCLE

1. Definition

- 1.1 This specification shall govern the manufacture and inspection of Jackets and Trousers, Motorcycle. This specific items covered under this specification with stock numbers are as follow:
- i. 4201-100 Motorcycle Jacket, High Visibility, Special /Blouson de motocycliste à haute visibilité, taille spéciales.
 - ii. 4203-100 Motorcycle Soft Shell Jacket, Special /Blouson de motocycliste à coquille souple, taille spéciales.
 - iii. 4205-100 Motorcycle Trousers, Special / Pantalon de motocycliste, taille spéciales.
- 1.2 This specification, viewing sample, drawings or other information issued in connection therewith, may only be used for specific enquiries, solicitations, or orders placed on behalf of the Royal Canadian Mounted Police.
- 1.3 This specification supersedes all previous specifications for RCMP Jackets and Trousers, Motorcycle.
- 1.4 This specification has been translated into French from this original English language document.

2. Applicable Specifications

- 2.1 The following publications are applicable to this specification and to the issues in effect on the date of the solicitation, unless otherwise specified.
- 2.2 CAN/CGSB 4.2, Textile Test Methods; 5.1-M90 (2013) and 4.1-2008.
- 2.3 CSA Z96-15 High-Visibility Safety Apparel.
- 2.4 CAN/CGSB 86.1-2003 Care Labeling of Textiles
- 2.5 CAN/CGSB 4.131-93, Thread, Polyester Wrap, Polyester Covered.

- 2.6 CAN/CGSB 4.139-94, 100% Spun Polyester.
- 2.7 ISO, International Standards Organization; Methods ISO 105-A2 1994, ISO 105-B02:2014, ISO 11092-2014, ISO 4915:1991, ISO 4916:1991, ISO 4920:2012, ISO 12945-2:2000, ISO 13934-1:2013, ISO 13937-2:2000, ISO 12947-2:1998, ISO 811:1981 & ISO 15496:2004.
- 2.8 ASTM, American Society for Testing and Materials; Methods D5169-98 (2015), D5170-98 (2015), E808-01:2016 and E809-08:2013.
- 2.9 AATCC American Association of Textile Chemists and Colorists - Technical Manual Methods; 118-2013.
- 2.10 DIN EN, German and European Standards; Methods EN 1621-1: 2012, DIN 53863, DIN EN 20811, DIN EN ISO 9237 and EN 24920:1993.
- 2.11 RCMP Specification, G.S.1045-266, Badges Woven Item - Badge, Shoulder, Cloth, Police.
- 2.12 RCMP Purchase Description, PD-PE-93, Police Patch, Reflective, Large & Small.
- 2.13 CAN/CGSB 4-GP-85Ma, Thread, Nylon, Bonded.

3. **General Requirements**

- 3.1 The article or material covered by this specification shall be free from material and manufacturing defects that may affect its appearance or serviceability. In all particulars not covered by this specification or contract documents, production shall be equivalent in all respects to the viewing sample.
- 3.2 **Design** - The Jacket, Motorcycle High Visibility shall be fitted, waist length designed to be worn in conjunction with a removable waterproof Z-liner as well as a Soft Shell Jacket. The motorcycle jacket shall be equipped with shoulder and elbow padding. The lettering 'RCMP', 'GRC', and 'POLICE' shall be retro-reflective and outlined in black. The Z-liner shall be constructed from a waterproof breathable membrane with a nylon knit jersey backing. This Z-liner is not intended to be worn as a standalone garment and shall be attached to two slide fasteners in the Motorcycle Jacket facings (left and right side).

The Trousers, Motorcycle shall be navy in colour with retro-reflective material below the knee. The trousers shall have two front slash pockets, side seam cargo pockets, front and back venting and a high back elastic waist with a high visibility strip along the side seam of the trouser. The trousers shall be equipped with hip and knee padding. The motorcycle jacket and trousers worn together shall meet CSA Z96-15 for a Class 3, Level 2 garment.

The Soft Shell jacket shall be a fitted, waist length jacket designed to be worn under the motorcycle jacket as an extra layer or as a standalone jacket. Shall be made of a 3 layer air permeable fabric with woven nylon stretch face and a polyester fleece backing.

All above items shall be made-to-measure to fit the body measurements of each member and shall be sized in conjunction with each other.

4. **Detail Requirements**

4.1 **Components**

- 4.1.1 **Shell Material I** - The Shell Material I shall be a 3 layer fabric with a hydrophilic membrane of approved shade and is to be purchased from the RCMP, meeting the requirements in Table I. There is a requirement for 2 colours in this fabric: fluorescent yellow-green and navy.
- 4.1.2 **Shell Material II** - The Shell Material II shall be a double weave construction stretch fabric of approved shade and is to be purchased from the RCMP, meeting the requirement in Table 4.
- 4.1.3 **Mesh Material** – The mesh material shall be a woven mesh of approved shade and it is to be purchased from the RCMP, meeting the requirement in Table 3.
- 4.1.4 **Lining & Pocketing Material** - The lining shall be black in colour, polyester mesh with a mass of $60 \text{ g/m}^2 \pm 8 \text{ g/m}^2$, equal in respect to the viewing sample.
- 4.1.5 **Z-Liner Material & Inside Pad Pocketing Material** – The Z-Liner and padding pocketing material shall be a 3 layer fabric construction with a waterproof breathable membrane and it is to be purchased from the RCMP, meeting the requirement in Table 2.
- 4.1.6 **Soft Shell Jacket Material** – The Soft Shell jacket shall be made from a 3 layer air permeable fabric with a durable water repellent finish. The material shall have a woven stretch nylon face and a polyester fleece backing bounded construction of approved shade and it is to be purchased from the RCMP, meeting the requirement in Table 5 and equal in respect to the viewing sample.
- 4.1.7 **Motorcycle Jacket Under Collar & Storm Flap** – The under collar and storm flap shall be made from a stretch fabric which is composed from 6% Spandex and 94% Polyester with $\pm 3\%$ tolerance, equal in respect to the viewing sample. (Fabric # 9700 from Shergroup is known to meet).

- 4.1.8 **Fire Retardant Trouser Inseam Patch and Leg Bands** – The inseam patch shall be made from 100% Polyurethane which shall have a one-side adhesive film. There is a requirement for 2 colours for these patches in both navy and fluorescent yellow green. The thickness shall be 0.27 mm with ± 0.10 mm tolerance and the weight shall be 300g/m² with ± 50 g/m² tolerance, equal in respect to the viewing sample.
- 4.1.9 **Motorcycle Jacket Pocket Bags** – The motorcycle jacket pocket bag shall be abrasion resistant and shall be fluorescent yellow green in colour with a mass of 200 g/m² \pm 8g/m², equal in respect to the viewing sample.
- 4.1.10 **Armour Inserts** - The shoulder, elbow, hip and knee areas shall be made of a durable flexible material made for shock absorption and impact protection. The amour inserts shall low profile, lightweight and pre-curved. The product D30 EVO Pro XTI Range meets the requirements. The armour inserts shall be CE approved meeting EN 1621-1.
- 4.1.11 **Slide Fastener - Lengths** – Shall be as determined from the made to measure measurement requirement.
- 4.1.11.1 **Slide Fastener – Jacket Front** - Shall be open end, black in colour, Aquazip 8 riri zipper meeting DIN 3419 equal in respect to the viewing sample.
- 4.1.11.2 **Slide Fastener – Jacket Facing** - (Shall be used for the attachment of a removable Z-liner) - Shall consist of an open-end slide fastener, black in colour, Aquazip 6 riri zipper meeting DIN 3419 equal in respect to the viewing sample. Length shall be measured from left front hem facing to right front hem facing as per made to measure requirements.
- 4.1.11.3 **Slide Fastener – Z-Liner** - (Shall be used for the attachment of a removable Z-liner to jacket facing) - Shall consist of an open-end slide fastener, black in colour, Aquazip 6 riri zipper meeting DIN 3419 equal in respect to the viewing sample. Length shall be measured from left front hem facing to right front hem facing as per made to measure requirements.
- 4.1.11.4 **Slide Fastener – Jacket Exterior Pockets & Vents** - Shall be closed end, Aquazip 6 riri zipper meeting DIN 3419 equal in respect to the viewing sample.
- 4.1.11.5 **Slide Fastener – Jacket Side Seam** - Shall be a two-way open end X type, black in colour, Aquazip 6 riri zipper meeting DIN 3419 equal in respect to the viewing sample.
- 4.1.11.6 **Slide Fastener – Soft Shell Front** – Shall be an open-end separator with a right hand insert, black in colour, injection molded, DA automatic slider, Vislon® YKK 5VS. YKK 26670 VS056LHD 9/16 V or YKK 26637 VS056MSL1 9/16V.

- 4.1.11.7 **Slide Fastener – Soft Shell Side Seam** – Shall be coil type, black in colour with two black enamel slider “Back to Back” opening from the bottom. YKK 12981 CNFMC56 *TS-BTM*B-B*.
- 4.1.11.8 **Slide Fastener – Soft Shell Upper/Lower pockets and Police Patch Pocket** – Shall be closed end, coil type, slide fastener with a DA Auto-lock slider, black in colour, with long black enamel pull tabs, YKK 12600 CNFC56 5/8.
- 4.1.11.9 **Slide Fastener – Jacket Attachment to Trouser** - Shall be ½ (half) a coil type, an open-end separator with a right hand insert, black in colour, YKK 14200 CNF056 5/8.
- 4.1.11.10 **Slide Fastener – Trouser Attachment to Jacket** - Shall be ½ (half) a coil type, an open-end separator with a right hand insert, black in colour, YKK 14200 CNF056 5/8.
- 4.1.11.11 **Slide Fastener – Trouser Front Fly** - Shall be a closed end, Aquazip 6 riri zipper meeting DIN 3419 equal in respect to the viewing sample.
- 4.1.11.12 **Slide Fastener – Trouser Vents** - Shall be closed end, Aquazip 6 riri zipper meeting DIN 3419 equal in respect to the viewing sample.
- 4.1.11.13 **Slide Fastener – Trouser Leg** - Shall be a two-way open end X type, black in colour, Aquazip 6 riri zipper meeting DIN 3419 equal in respect to the viewing sample.
- 4.1.12 **Thread**
- 4.1.12.1 **Thread - Sewing for Jacket & Trouser Shell** – Bonded Nylon, Tex 35 or Tex 45, meeting CAN/CGSB 4-GP-85Ma, colour to match shell material.
- 4.1.12.2 **Thread - Top Stitching for Jacket & Trouser Shell** - Bonded Nylon, Tex 35 or Tex 45, CAN/CGSB 4-GP-85Ma, colour to match shell material.
- 4.1.12.3 **Thread – Serging for Jacket & Trouser Shell** –100% Spun Polyester, Tex 40, meeting CAN/CGSB-4-139-94, colour to match shell material.
- 4.1.12.4 **Thread - Serging - Z-Liner** – 100% Spun Polyester, Tex 40, meeting CAN/CGSB-4-139-94, colour to match shell material.
- 4.1.12.5 **Thread - Serging – Soft Shell Jacket** – 100% Spun Polyester, Tex 40, meeting CAN/CGSB-4-139-94, colour to match shell material.
- 4.1.12.6 **Thread - Stitching – Soft Shell Jacket** – Polyester wrapped, polyester core, Tex 40 meeting CAN/CGSB-4.131-93, colour to match soft shell jacket.

- 4.1.13 **Retro-reflective Markings and Lettering** - The retro-reflective markings shall be exposed, wide angle, retro-reflective lens, silver material in the form of sew on (3M 8940) or heat applied (FR 3M9740), 5cm wide. The 'RCMP', 'GRC', and 'POLICE' lettering on the front and back will be Arial font dimensioned as per drawing #3 and shall be 3M 8725, heat applied lettering. The lettering shall be outlined in black as per drawing # 3 and viewing sample. Its retro-reflective abilities shall meet a minimum coefficient of retro-reflection, R_A , and shall be determined in accordance with the procedures defined in ASTM E808 and E809. It shall meet all the retro-reflective performance requirements outlined in Table 1 (Class 3 apparel) & Table 5 (level 2) requirements in the CSA Z96-15 High-Visibility Safety Apparel standard.
- 4.1.14 **Shoulder Badges** - The RCMP stock item number 2135-108, Badge, Shoulder, Police shall be purchased from the RCMP.
- 4.1.15 **Hook and Loop Tape** – The hook and loop tape shall be woven nylon, black in colour, with a high life cycle. The combined hook and loop shall have no less than 8 P.S.I length-wise shear strength with initial peel strength of not less than 1 P.I.W. when tested to ASTM D5169-98 (2015), standard test method for shear strength [dynamic method] of hook and loop touch fasteners and ASTM D5170-98 (2015), standard test method for peel strength ["T" method] of hook and loop touch fasteners.
- 4.1.16 **Dome Fastener** - The dome fastener shall be a "S" spring standard type 24 ligne fastener with a dull black nylon cap with a double lacquer finish. All metal parts are to be brass. Prym snap, product code 370258 manufactured in Germany is known to meet these requirements.
- 4.1.17 **Side Seam Closure Strap** - The side seam closure strap shall be a double layer pre-shrunk, woven polyester elastic of superior quality. The side seam closure strap shall measure 2.5 cm wide x 21 cm long closed for the Motorcycle Jacket and shall measure 2.5 x 10.5 cm for the soft shell jacket, black in colour as per viewing sample.
- 4.1.18 **Microphone Tab** – The microphone tab shall be a commercially available webbing, black in colour, 2.5cm wide, 5cm finished length for mic tab (for Soft Shell), webbing measuring in total length 11 to 11.5cm to accommodate both mic tab and snap (for Motorcycle Jacket) as per viewing sample.
- 4.1.19 **Coat Hanger** – For the Soft Shell and Z-liner, the coat hanger shall be a commercially available webbing, black in colour, .5 - 1.5cm in width and 5 - 6cm in total length as per viewing sample. For the Motorcycle jacket, the coat hanger shall be a commercially available braided cord, black in colour, .5 cm in width and 5 – 6 cm in total length as per viewing sample

- 4.1.20 **Whistle Post** – Commercially available whistle post, matt finish as per viewing sample.
- 4.1.21 **Jacket - Front Hem Elastic** – Shall be pre-shrunk, 5-6 cm wide, knitted construction of superior quality.
- 4.1.22 **Trousers – Waistband Elastic**- Shall be pre-shrunk, knitted construction of superior quality.
- 4.1.23 **Trousers - Hem Strap Elastic** – Shall be black in colour, 2.5cm wide, pre-shrunk, woven polyester of superior quality as per viewing sample.
- 4.1.24 **Trousers & Jacket Zip Extension Fabric** – Shall be made from 85% Nylon and 15% Spandex $\pm 3\%$ tolerance as per viewing sample.
- 4.1.25 **Elastic Drawcord for Soft Shell Hem** - The draw cord shall be round elastic, black in colour, equal in respect to the viewing sample.
- 4.1.26 **Eyelet for Soft Shell Hem** – The eyelet shall be brass black oxy in colour, equal in respect to the viewing sample. Prym Eyelet 542194 and Washer 542188 is known to meet.
- 4.1.27 **Cord Lock for Soft Shell Hem** - The lock shall be commercially available cord lock with spring loaded, nylon composition, black in colour, equal in respect to the viewing sample.
- 4.1.28 **Fluorescent Yellow Police Patch for Soft Shell** – One each of the RCMP stock item number 8653-100, Police Patch, Reflective, Large and RCMP stock item number 8654-100, Police Patch, Reflective, Small shall be purchased from the RCMP for each soft shell.
- 4.2 **Size and Dimensions** – Motorcycle Jacket & Z-liner, Soft Shell Jacket and Motorcycle Trousers included in this specification shall be supplied in the sizes specified by the RCMP special made measurement form and shall be sized in conjunction with each other. The wearing ease shall be from 6” to 8” for the Chest, Waist and Seat. Special care shall be taken to the front and back length as well as elbow and knee for the padding location as it is crucial for the riders’ protection to reflect the measurements supplied by the special made measurement form. All special made garments shall have a tag showing the Name and the Regimental Number of the individual shown on the measurement form.
- 4.3 **Construction**
- 4.3.1 **Stitching** - All stitching shall be lockstitch. There shall be not less than 2.5 nor more than 3.5 stitches per centimeter. The beginning and ending of all stitching shall be securely backstitch, tacked, unless secured by other stitching.

- 4.3.2 **Seam Seal Tape** – Shall be compatible to 3 layer fabric with membrane, Framis style number 7611 seam seal tape is known to meet these requirements. The colour must be appropriate to the backing colour of the fabric. Please note the fabric shall not show any visible signs of delamination* or loss of film during the garment’s useful life (approximately 3 to 5 years). The fabric shall be capable of having its sewn seams, seam-sealed with an appropriate tape, in a waterproof, durable fashion. The tape on the sealed seams shall not peel off and/or wear during the projected life span of the garment. Not meeting these requirements will be a probable cause for rejection. Delamination is defined as any irreparable separation of the bonded layers of the Laminated Shell Material(s).
- 4.3.3 **Jacket, High Visibility**
- 4.3.3.1 **Back** - The back shall be made from mesh material as specified in Para. 4.1.3. with a double layer construction at the shoulders. The back shall have a reflective pattern and reflective lettering meeting CSA Z96-15 requirements as outlined in Para. 4.1.13. The reflective lettering shall be placed on a fluorescent yellow green patch as specified in Table I. The inside lower back shall have a zip in panel measuring 14”x 4” that can be zipped into the trouser panel. The back hem is to be a straight hem with an in inner layer of shell fabric in fluorescent yellow green as specified in Table I for durability. The back when finished shall conform to the drawings and viewing sample.
- 4.3.3.2 **Front** - The front shall be made from mesh material specified in Para 4.1.3. with a double layer construction at the shoulders. The jacket shall be equipped with a center front slide fastener as specified in Para. 4.1.11.1, length shall be as per special made requirement with dome fasteners for closure on the storm flap. The fronts shall have two chest pockets with slide fasteners as specified in Para. 4.1.11.4 and two lower front pockets. There shall be an expandable upper front pocket on the upper left chest next to the left chest pocket with the slide fastener. The front shall have a reflective pattern and reflective lettering meeting CSA Z96-15 requirements as outlined in Para. 4.1.13. The reflective lettering shall be placed on a fluorescent yellow green patch as specified in Table I. On the left-hand side, there shall be an 8.5 cm x 2.5 cm piece of loop tape for the name tag. The left and right fronts shall be equipped with a piece of material as specified in Para. 4.1.18. The front hem shall consist of a woven elastic as specified in Para. 4.1.21 which shall be covered by the navy shell material specified in Para. 4.1.1. The front hem elastic shall be topstitched with two rows of double stitching. All components of the front shall conform to the drawings and viewing sample.
- 4.3.3.3 **Chest Pockets** - The jacket shall have two vertical chest pockets as well as an expanding left chest pocket with a dome fastener closure as per Para. 4.1.16. The two vertical chest pocket shall have slide fasteners as specified in Para. 4.1.11.4 and lengths shall be as per special made requirement. The slider shall be in an

upright position when the pocket is closed as per the drawings and the viewing sample.

- 4.3.3.4 **Front Storm Flaps and Facings** - The front storm flaps shall be made from material as specified in Para. 4.1.1 and shall be navy in colour. The jacket front shall have a slide fastener as specified in Para. 4.1.11.1. The jacket front slide fastener shall be inserted in a way to have the slider and retaining box on the left front and the insert pin attached on the right front. The left outer front storm flap shall have five to seven (depending on the front length) dome fasteners (female portion), which align with the male portions attached to the right front jacket. There is a right inner storm flap as per drawing #4. The inside left and right facings shall have a slide fastener as specified in Para. 4.1.11.2. The slide fastener shall be inserted behind the facings with the retaining box side of the fastener on the right and the insert pin on the side on the left. The construction of the front storm flap and facings shall conform to the drawings and viewing sample.
- 4.3.3.5 **Side Seams** – The jacket side seams shall be equipped with a slide fastener as specified in Para 4.1.11.5 from the sleeve underarm to hem. One slider shall be placed at the underarm and the second shall open from the bottom hem upwards as shown in drawing #5. The side seam hem shall have an elastic closure strap as specified in Para. 4.1.17 with a dome fastener as specified in Para. 4.1.16 and shall conform to the drawings and viewing sample.
- 4.3.3.6 **Collar** - The top collar shall be made of material as specified in Para. 4.1.1 and shall be navy in color and the under collar (mandarin collar inside layer) shall be made of material as specified in Para. 4.1.7. The collar shall measure 5cm ± 0.5 cm (2”) at the center front to 6 cm ± 0.5cm (2 3/8”) at center back and length as per made to measure requirement. The collar shall have double male snap for adjustable closure as per drawing #4 and viewing sample.
- 4.3.3.7 **Sleeve & Sleeve Cuffs** - The sleeve shall be made from material as specified in Para. 4.1.1 navy in colour and 4.1.3. The shoulders shall be constructed with a double layer mesh as specified in Para. 4.1.3. The elbow patch shall be made from material specified in Para 4.1.2. All sleeve seams shall be double top stitched. Applied to both sleeves shall be retro-reflective tape as specified in Para. 4.1.13 positioned between the elbow and the cuff as per drawing # 1 and viewing sample. The cuff shall be made from material specified in Para. 4.1.1. and shall be navy in colour. The cuff shall have a 13 cm adjustment strap with a 10 cm x 3.75 cm (± 0.5cm tolerance) piece of hook tape for adjustability. The cuff shall be 5.75 cm wide with a 10 cm x 3.75 cm (±0.5cm tolerance) piece loop tape to secure the adjustment strap. On the inside, at the underarm seam, there shall be a gross grain ribbon with a dome fastener to attach the Z-liner as per drawing # 5 and viewing sample. Some seam on the sleeves shall be seam seal to prevent seam from being abrasive to the touch.

- 4.3.3.8 **Inside Pad Pockets** – The inside of the jacket shall have pouches at the shoulder and the elbows to hold the armour inserts. The pouches shall be constructed from a single layer of material for the elbow and two layers of material for the shoulder as specified in Para. 4.1.5 and shall be sewn completely around the pad pocket with a slide fastener opening. Care shall be taken to ensure the pockets are placed carefully in order to provide proper placement of the armour inserts. Pouches shall be sized so the specified armour inserts have minimal movement when inserted.
- 4.3.3.9 **Inside Pocket** – The jacket shall have a patch pocket on the right and left interior of the jacket. The pocket shall be constructed of the shell material as specified in Para. 4.1.1 in the fluorescent yellow-green colour and shall have hook and loop tape closure as per viewing sample.
- 4.3.3.10 **Shoulder Straps** - Shoulder straps shall be shaped and dimensioned in accordance to drawing #5. It shall be made from two layers of the shell material as specified in Para. 4.1.1. in the fluorescent yellow-green colour. The shoulder straps shall be sewn into the sleeve-head. The shoulder strap shall be secured to the jacket shoulder with a dome fastener (female) as specified in Para. 4.1.16. Under each shoulder strap there shall be a whistle post as per Para 4.1.20 as per viewing sample.
- 4.3.3.11 **Retro-Reflective Pattern** - The retro-reflective material as specified in Para. 4.1.13 shall be positioned as per drawing #1. The back panel shall have an ‘X’ broken up by the words ‘RCMP’, ‘GRC’ and ‘POLICE’ that shall be centered on a fluorescent yellow-green patch from material specified in Para. 4.1.1 in the ‘X’ and across the back panel. There shall be a horizontal band at the bottom of the ‘X’ extending from side to side. The ‘X’ shall be symmetrical from side to side and top to bottom between the shoulders and the bottom horizontal band. The front body shall have retro-reflective material from the shoulder extending down the body to meet the horizontal band that extends from side to side. The right front shall have lettering positioned on a fluorescent yellow-green patch from material specified in Para.4.1.1 as per drawing #3 and viewing sample. The sleeves shall each have one retro-reflective band starting at a minimum of 5 cm up from the sleeve hem seam circling the sleeve. For all made-to-measure garments, compliance with CSA Z96-15 is required and no less than 201 sq.in of retro-reflective shall be used.
- 4.3.3.12 **Retro-Reflective Lettering** - The font will be Arial Black or similar and sized as per drawing #3. Centered in the ‘X’ on the back shall be ‘RCMP’, ‘GRC’ and ‘POLICE’ retro-reflective lettering. The lettering ‘RCMP’ shall be left justified in relation to ‘POLICE’ and the ‘GRC’ shall be right justified in relation to ‘POLICE’. On the right front, ‘RCMP’, ‘GRC’ and ‘POLICE’ lettering in retro-reflective letters which are outlined in black as per drawing #3. The lettering ‘RCMP’ shall be left justified in relation to ‘POLICE’ and the lettering ‘GRC’ shall be right justified in relation to ‘POLICE’. All retro-reflective material used for lettering shall be permanently attached to the shell material by means of heat sealing. Stitching shall be employed in attaching the patches for the lettering, and the heat-

sealing shall endure for the life of the jacket. There shall be no loose or un-bonded edges, or loss of film.

4.3.3.13 **Shoulder Badges** - The RCMP shoulder badges specified in Para. 4.1.14 shall be sewn through the upper sleeve layer only (not through the inner mesh layer/pad pockets). The badge is to be centered on the sleeve-head 3 cm below the sleeve-head seam and attached with one row of stitching.

4.3.3.14 **Attachment Loop** - A loop shall be sewn at the center inner back neck to attach the Z-Liner or the Soft Shell as per Para. 4.1.19.

4.3.3.15 **Side Seam Closure Strap** - There shall be a side seam closure strap at each side seam hem, constructed from elastic as specified in Para. 4.1.17. It shall be 20cm long and measuring 10.5cm when folded in half when sewn to the lower back side seam flipping toward the front, equipped with two female dome fastener for closure. The corresponding male dome fastener shall be applied to the jacket front at the hem as per viewing sample.

4.3.4 **Trouser, Motorcycle**

4.3.4.1 **Trouser Front** – The trousers front shall be constructed from shell material, navy in colour as specified in Para. 4.1.1 and material specified in Para. 4.1.2. The trousers shall have two front slash pockets, side seam cargo pockets with a waterproof zippered vents positioned beside them, and with a hidden inner zippered pockets with a high visibility strip along the side seam of the trouser. The waterproof slide fastener shall be as per Para. 4.1.11.11, Para 4.1.11.12. The trousers shall be equipped with hip and knee padding. The hem shall be equipped with elasticized removal stirrup strap as per viewing sample. The front when finished shall conform in every respect to the drawings and viewing sample.

4.3.4.2 **Trouser Back** – The trousers back shall be constructed from shell material, navy in colour as specified in Para. 4.1.1. The trousers shall have 2 back upper vents with a waterproof zipper closure as per Para. 4.1.11.12. The inside upper back shall have a zip in panel that can be zipped in the jacket zip in panel. The back when finished shall conform to the viewing sample and the drawings.

4.3.4.3 **Trouser Waistband** – The waistband shall be constructed from shell material, navy in colour as specified in Para. 4.1.1. The back waistband shall be elasticized utilizing elastic specified in Para. 4.1.22. The front fly shall be secured with two dome fasteners as per Para. 4.1.16 and as shown in drawing #8. There shall be 7 adjustable hook and loop tape secured belt loops and sewn to the waistband. The waistband shall conform in to viewing sample and drawings.

4.3.4.4 **Trouser Fly Front Opening** – The fly front and the fly front curtain shall be constructed from shell material, navy in colour as specified in Para. 4.1.1. There shall be a water repellent slide fastener in accordance with Para. 4.1.11.11. The fly

front opening at the waistband shall be equipped with two dome fastener as per Para. 4.1.16. The front fly shall conform to the drawings and viewing sample.

- 4.3.4.5 **Trouser Side Seams** – Both side seams shall have a 1 3/8” fluorescent yellow stripe along the side seam and made from shell material as per Para. 4.1.1. There shall be a cargo pocket with an inner hidden horizontal waterproof zippered pocket on each side seam and a waterproof zipper with two sliders and positioned below the seam of the cargo pocket to hem. The waterproof slide fastener shall be as per Para. 4.1.11.13. The side seam shall conform to the viewing sample and drawings.
- 4.3.4.6 **Trouser Leg** – The leg hem shall be 3 cm finished and stitched down on the edged using a 3 mm gauge. Both legs shall have a 10 cm (±0.5cm tolerance) long adjustment strap attached to the bottom portion of the side seam as shown in drawing #8 & #9 with an 6.5cm x 2.5cm (±0.5cm tolerance) piece of hook tape for adjustability. The back portion of the trouser hem shall have the corresponding 10cm x 2.5cm (±0.5cm tolerance) piece of loop tape sewn level with the finished hem to secure the adjustment strap. The trouser leg shall conform to the viewing sample and drawings.
- 4.3.4.7 **Trouser Leg Retro reflective Pattern** – The retro-reflective material as specified in Para. 4.1.13 shall be positioned as per drawing #8 & #9. Each leg shall have a retro-reflective horizontal band with 1” of High Visibility material specified in Para 4.1.8 in the fluorescent yellow green on each side of the retro reflective positioned between the knee and the trousers hem. For all made-to-measure garments, compliance with CSA Z96-15 is required. The trouser leg shall conform to the viewing sample and drawings.
- 4.3.5 **Z-Liner**
- 4.3.5.1 **Removable Z-Liner** – The Z-liner shall be made from material as specified in Para. 4.1.5 and shall be able to be removed from the shell. The front closure shall be fitted with a slide fastener as specified in Para. 4.1.11.3. The sleeve shall have a loop positioned at the under sleeve measuring 4 cm from hem, with commercially available product equal to the viewing sample. On the inside back neck there shall be a coat hanger, material as specified in Para. 4.1.19. On the outside back neck there shall be a piece of gross grain ribbon with a dome fastener as specified in Para. 4.1.16 to attach to the motorcycle jacket. All stitching shall be seam sealed for maximum weather protection. The Z-Liner shall have a stuff sack made from the same material as specified in Para. 4.1.5 for storage of the Z-Liner when not in use. All components of the Z-Liner shall be constructed as per the drawings and viewing sample. The liners shall be made to measure requirement and sized to fit the corresponding Motorcycle jacket.
- 4.3.6 **Soft Shell Jacket**
- 4.3.6.1 **Back & Back Yoke** – The Soft Shell shall be made from material specified in Para. 4.1.6, shall have a two piece back with an envelope opening to store the police

patch. The large “hide away” police patch shall be constructed from material specified in Para. 4.1.28 and shall be constructed as per viewing sample. The large “hide away” patch shall have three pieces of hook tape and shall have three pieces of corresponding loop tape applied to the inside facing. The back shall have two pieces of loop tape 2.5cm x 1.6cm sewn to the body for the attachment of the back police patch when in an open position. The back shall conform to the viewing sample and drawing # 10.

- 4.3.6.2 **Back & Front Hem Channel** – The back and front hem shall be turned up and top stitched to create a hem channel 2.5 cm wide for the elastic draw cord. The back hem channel shall have two eyelets (2 cm apart) and 4 cm from the left panel seam. The front right and left hem shall have two eyelets (2 cm apart) 3 - 4 cm from left panel seam, and a loop of gross grain ribbon with a male and female dome fastener shall be inserted 14 cm above the hem in the panel seam to hold the elastic draw cord in an upright position. The front left hem shall have two eyelets as specified in Para 4.1.26 (2 cm apart) measuring 3 - 4 cm from the left center front. An elastic draw cord, as specified in Para. 4.1.25 shall be securely attached into the side seam and threaded through the hem channel and through the eyelet outside the hem channel. It shall then be threaded through the cord lock as specified in Para. 4.1.27. When the hem is layed flat, the elastic draw cord shall be layed flat.
- 4.3.6.3 **Front** – The Soft Shell shall be equipped with a center front slide fastener as per Para. 4.1.11.7, length as per made to measure requirement and shall have an interior storm flap attached to the right front. The front shall have five pockets, two upper, two lower pockets, and one chest pocket to store the small hide away police patch as specified in Para. 4.1.28. The right front shall have an 8.5 cm x 2.5cm piece of loop tape for the name tag 2.5 cm above the police patch pocket. Both left and right front yokes shall be equipped with commercially available webbing as specified in Para. 4.1.18 for the microphone loop. Care shall be taken to ensure the front right and left yokes are aligned horizontally. All components shall conform to the viewing sample and drawings.
- 4.3.6.4 **Chest Pockets** - The Soft Shell shall have two vertical, upper front pockets with slide fasteners as specified in Para. 4.1.11.8 and the length as required for the made to measure requirement. Each slide fastener shall be covered by a flap created from the shell material specified Para. 4.1.1. The slider shall be in an upright position when the pocket is closed. There shall be a horizontal pocket on the right front positioned between the yoke and the body. It shall have a slide fastener as specified in 4.1.11.8 and shall be near the armhole when in a close position. The horizontal pocket shall have a small patch and a small reflective police patch as per Para. 4.1.28 as per viewing sample. The reflective police patch shall be sewn on top of the pull-down with a side edges folded between the seams. The pocket bags shall be constructed from pocketing material specified in Para. 4.1.4. The two vertical chest pockets shall have an inner facing constructed from material specified in Para. 4.1.6. The pocket bag that forms the horizontal pocket on the right side shall have a stitching line 9cm deep as per viewing sample.

- 4.3.6.5 **Lower Pockets** – The Soft Shell shall have two lower front pockets. Each pocket shall have a slide fastener as specified in Para. 4.1.11.8. Each slide fastener shall be covered by a flap created from the shell material specified in Para 4.1.1. The slider shall be in an upright position when the pocket is closed. The pocket bag shall be constructed from material specified in para. 4.1.4. with an inner facing and dimensioned as per and viewing sample.
- 4.3.6.6 **Side Seams** – The Soft Shell side seams shall be equipped with a slide fastener as specified in Para 4.1.11.7 from the sleeve underarm to hem. One slider shall be placed at the underarm and the second shall open from the bottom hem as per viewing sample.
- 4.3.6.7 **Collar** – The Soft Shell collar shall be made from material specified in Para. 4.1.6. On the outside back neck there shall be a piece of gross grain ribbon with a dome fastener to attach to the motorcycle jacket. The collar shall conform to the viewing sample and drawings.
- 4.3.6.8 **Sleeve** – The Soft Shell shall be a set in sleeve. The sleeve hem shall be 3.25 to 3.5cm with a 10 x 2 (± 0.5 cm tolerance) piece of loop tape to secure the adjustment strap. The adjustment strap shall be 9.5–10.5 cm x 2.75cm with a 9-9.5 cm \pm cm x 2cm (± 0.5 cm tolerance) hook tape applied as per viewing sample. The sleeve shall have a loop positioned at the under sleeve measuring 4 cm with a commercially available braided cord and shall conform to the viewing sample and drawings.
- 4.3.6.9 **“Hide Away” Police Patches** – The front and back of the Soft Shell jacket shall have a “hide away” patches and be constructed from a single layer of material as specified in Para. 4.1.6 folded in half with the raw ends turned inside and sewn. The finished dimensions of the front patch shall be 12.5 cm x 7cm and it shall lay flat when pulled through the zipper opening. The finished dimensions of the back patch shall be 28.5 cm x 9.5 cm (± 0.5 cm tolerance). The small and large fluorescent yellow police patch shall be as specified in Para. 4.1.28 and shall be sewn on respectively leaving 5mm of navy material visible at the top. Both ends of the fluorescent yellow police patch shall be folded under and sewn into the patch side seams. The remainder of the fluorescent yellow police patch shall be topstitched on top of the “hide away” patch. The back “hide away” patch shall have hook tape attached to the back side for the attachment when in a closed position. Measurement of the drop down can vary in length depending on the size being requested.
- 4.3.6.10 **Shoulder Badges** – The RCMP shoulder badges specified in Para. 4.1.14. The badge is to be centered on the sleeve-head 3 cm below the sleeve-head seam and attached with one row of stitching.
- 4.3.6.11 **Coat Hanger** – A coat hanger, material as specified in Para. 4.1.19 and shall be centered at the neck sewn between the collar and the back yoke.

- 4.3.6.12 **Side Seam Closure Strap** – The Soft Shell shall have a side seam closure strap measuring $9.5\text{cm} \pm 0.5\text{cm}$ in length when finished at the side seam hem. It shall be constructed from elastic specified in Para. 4.1.17 and shall be sewn to the lower back hem near the side seam flipping towards the front. A female dome fastener specified in Para 4.1.16 shall be applied to the side seam closure strap and the corresponding male dome fastener shall be applied to the Soft Shell front hem near the side seam. The strap shall not pull when the Soft Shell is placed flat.
- 4.3.7 **Instruction Sheet** - Each completed jackets and trousers shall have an instruction sheet folded and inserted into the pocket bag, with the information included in Appendix A English and French, outlining the Care Instructions for the jacket & trousers, Z-liner and Soft Shell.
- 4.3.8 **Marking Cleaning Instructions Label for Motorcycle Jacket and Trousers** – Each jacket and trousers shall have a durable label with marking instructions affixed to the inside shell lining, with the following information in English and French:

Motorcycle Jacket & Trousers	Blouson et pantalon de motocycliste
RCMP	GRC
Date of Manufacture	Date de fabrication
Manufacturer's Identification	Identification du fabricant
CSA Z96-015 Class 3, Level 2 Fluorescent Yellow-Green	Norme CSA Z96-15 Classe 3, Niveau 2 Jaune-vert fluorescent
Name :	Nom :
Reg:	Matricule :
Close all zippers, fasteners and velcro and remove all padding before washing.	Fermer toutes les fermetures à glissière, les attaches et les attaches à ruban autoagrippant et retirer toutes les pièces de rembourrage avant le lavage.
Machine wash in warm (40°C)	Laver à la machine à l'eau tiède (40°C)
Do not bleach	Ne pas utiliser d'agent de blanchiment
Do not use fabric softeners	Ne pas utiliser d'agent assouplissant
Do not tumble dry	Ne pas sécher par culbutage
Low iron	Repasser à basse température
Dry clean with petroleum solvent only or very gentle professional wet cleaning.	Nettoyer à sec avec solvant pétrolier seulement ou par voie humide au cycle très délicat (nettoyage professionnel)

Note: The manufacturer's identification shall not appear anywhere on the garment except on the garment label as indicated.

- 4.3.9 **Marking & Cleaning Instructions for Z-Liner** – Each Z-Liner and corresponding stuff sack shall have a durable label with marking instructions sewn or heat applied to the inside at side seam, with the following information in English and French:

Z-Liner	Doublure zippée
RCMP	GRC
Date of Manufacture	Date de fabrication
Manufacturer's Identification	Identification du fabricant
Name:	Nom:
Reg #	Matricule :
Machine wash in warm (40°C) separately	Laver séparément à la machine à l'eau tiède (40°C)
Do not bleach	Ne pas utiliser d'agent de blanchiment
Do not use fabric softeners	Ne pas utiliser d'agent assouplissant
Do not tumble dry	Ne pas sécher par culbutage
Low iron	Repasser à basse température
Dry clean with petroleum solvent only or very gentle professional wet cleaning.	Nettoyer à sec avec solvant pétrolier seulement ou par voie humide au cycle très délicat (nettoyage professionnel)

Note: The manufacturer's identification shall not appear anywhere on the garment except on the garment label as indicated.

- 4.3.10 **Marking & Cleaning Instructions for Soft Shell** - Each Soft Shell shall have a durable label sewn to the inside of the Soft Shell, with the following information in English and French:

Motorcycle Soft Shell	Doublure à coquille souple
RCMP	GRC
Date of Manufacture	Date de fabrication
Manufacturer's Identification	Identification du fabricant
Name:	Nom:
Reg #	Matricule :
Machine wash in warm (40°C)	Laver à la machine à l'eau tiède (40°C)
Do not bleach	Ne pas utiliser d'agent de blanchiment
Do not use fabric softeners	Ne pas utiliser d'agent assouplissant
Do not tumble dry	Ne pas sécher par culbutage
Low iron	Repasser à basse température
Dry clean with petroleum solvent only or very gentle professional wet cleaning.	Nettoyer à sec avec solvant pétrolier seulement ou par voie humide au cycle très délicat (nettoyage professionnel)

Note: The manufacturer's identification shall not appear anywhere on the garment except on the garment label as indicated

5. **Quality Assurance Provisions**

- 5.1 **Responsibility for Inspection** - Unless otherwise stipulated in the contract, it is the prime contractor's responsibility to satisfy the RCMP Uniform & Equipment Program that the material and services being supplied conform to this specification. This may be accomplished by performing the tests specified in this specification or by demonstrating to the satisfaction of the RCMP Uniform & Equipment Program that conformity to this specification of manufacturing processes is assured. The contractor may use any independent commercial testing establishment acceptable to the RCMP Uniform & Equipment Program.
- 5.2 The RCMP Uniform & Equipment Program reserves the right to perform any inspection considered necessary to ensure the material and services conform to the specified requirements. For the purpose of inspection, a portion of each delivery not exceeding two percent or two out of any number delivered under 100 may be put to tests that could destroy the articles. If found to be inferior or not in accordance with this specification, all articles so destroyed shall be replaced by others of proper quality and pattern at the expense of the contractor. The entire delivery may also be rejected if it is found that articles previously rejected due to non-repairable defects are redelivered for inspection.
- 5.3 The contractor will be promptly notified when any articles are not accepted and such articles will be returned at the contractor's risk and expense.

TABLE I

Schoeller Fabric Number	14968 for Fluorescent yellow green colour	RCMP Stock Number	9610-000
	12618 for Navy colour		9640-000
	REQUIREMENT		TESTED BY
Description	A 3 layer fabric, 2 way stretch with hydrophilic membrane.		
Colour	Navy & Fluorescent yellow green colours.		
Fabric Composition	3% Elastane 20% Polyurethane 77% Polyamide		
Weave	Plain		
Mass	235 g/m ² ± 8g/m ²		CAN/CGSB-4.2 Method 5.1-M90 (2013)
Width	148 cm (min)		CAN/CGSB Method 4.1-2008
Pilling (Martindale)	7'000 T Grey Scale 5		ISO 12945-2:2000
Breaking Strength	Warp 1'000 N Weft 750 N		ISO 13934-1:2013
Breaking Elongation	Warp 35% Weft 60 %		
Tear Propagation Resistance	Warp 30 N Weft 35 N		ISO 13937-2:2000
Abrasion Resistance (Schopper) - load - sandpaper	10'000 T/revs 500g Grit 280 er		DIN 53863 (Teil 2/ part 2)
Abrasion Resistance (Martindale) load	80'000 T/revs 12 kPa		ISO 12947-2:1998
Falling Simulation	80 km/h		Skid Rating

TABLE 2

Schoeller Fabric Number: 12083		RCMP Stock Number: 9600-000
	REQUIREMENT	TESTED BY
Description	A 3 layer Z-liner construction with a waterproof breathable membrane with a nylon knit jersey backing.	
Colour	Grey	
Fabric Composition	48% Polyurethane 52% Polyamide	
Mass	145 g/m ² ± 8g/m ²	CAN/CGSB-4.2 Method 5.1-M90 (2013)
Width	147 cm (min.)	CAN/CGSB Method 4.1-2008
Water Column	>10'000 mm	DIN EN 20811 (ISO 811:1981)
Test Pressure	150 mbar/min	
Water Vapour Transmission	MVTR 7'500 g/m ² /24hr	ISO 15496:2004
Air-Permeability	0 l/m ² /s	EN ISO 9237
Test Pressure	100 Pa	
Breaking Strength	Warp 300 N Weft 175 N	ISO 13934-1:2013
Breaking Elongation	Warp 50% Weft 150%	

TABLE 3

Schoeller Fabric Number: 14461		RCMP Stock Number: 9620-000
	REQUIREMENT	TESTED BY
Description	Woven Mesh	
Colour	High Visibility Fluorescent Yellow-Green	
Fabric Composition	7 % Polyurethane 16 % Polyester 77 % Polyamide	
Mass	365 g/m ² ± 8g/m ²	CAN/CGSB-4.2 Method 5.1-M90 (2013)
Width	144 cm (min)	CAN/CGSB Method 4.1-2008
Breaking Strength	Warp 3'500 N Weft 3'200 N	ISO 13934-1:2013
Breaking Elongation	Warp 50% Weft 40%	
Tear Propagation Resistance	Warp 350 N Weft 350 N	ISO 13937-2:2000
Abrasion Resistance (Schopper) - load - sandpaper	7'000 T/revs 1'000 g Grit 280er	DIN 53863 (Teil 2/part 2)
Falling Simulation	80 km/h	Skid Rating

TABLE 4

Schoeller Fabric Number	13338	RCMP Stock Number	9630-000
	REQUIREMENT		TESTED BY
Fabric Number	13338		
Description	Double weave construction stretch fabric with nylon yarn on the face and Kevlar® on the back side with 4 way stretch capability.		
Colour	Navy		
Fabric Composition	10 % Elastane 26% Aramid (Kevlar®) 64% Polyamide		
Mass	395 g/m ² ± 8g/m ²		CAN/CGSB-4.2 Method 5.1-M90 (2013)
Width	132 cm (min)		CAN/CGSB Method 4.1-2008
Breaking Strength	Warp 1'300 N Weft 1'700 N		ISO 13934-1:2013
Breaking Elongation	Warp 90 % Weft 90%		
Tear Propagation Resistance	Warp 80 N Weft 100 N		ISO 13937-2:2000
Abrasion Resistance (Schopper) - load - sandpaper	2'000 T/revs 1'000 g Grit 280er		DIN 53863 (Teil 2/ part 2)
Falling Simulation	80 km/h		Skid Rating

TABLE 5

RCMP Stock Number: 9650-000		
	REQUIREMENT	TESTED BY
Description	A 3 layer air permeable fabric that shall be water resistant and windproof.	
Colour	Navy	
Mass	290 g/m ² ± 20g/m ²	CAN/CGSB-4.2 Method 5.1-M90 (2013)
Width	131 cm (min)	CAN/CGSB Method 4.1-2008
Colourfastness to light	Face – Equal to or better than L4	CAN/CGSB-4.2 Method 18.3-97 (R2010) ISO 105-B02:2014
Colourfastness to Crocking Wet & Dry	Face – Dry: Grey Scale 4 or better Face – Wet: Grey Scale 3 or better	CAN/CGSB-4.2 Method 22-2004 (R2013)
Colourfastness to Washing	Face – Colour change and staining on polyester and cotton: Grey Scale 4 or better	CAN/CGSB-4.2 Method 19.1-2004 (R2013) Test #2A ISO 105-A2:1994
Air-Permeability	Initial and after 5 launderings: <0.30 cm ³ /cm ² x S-1	CAN/CGSB-4.2 Method 36-M89 (R2013)
Water Repellency	Initial: 100 After 10 launderings: no less than 90	CAN/CGSB 4.2 Method 26.2-94(R2012) ISO 4920:1981
Thermal Resistance (CLO)	Initial and after 5 launderings: No less than 0.25 and no more than 0.4	ISO 11092-2014(dry)
Dimensional Change to Domestic Washing	After 3 cycles No more than: Warp 3.5% Weft 3.5%	CAN/CGSB-4.2 Method 58-2004, III, E, 2
Abrasion Resistance	After 4000 cycles Colour change – No less than 4-5 Appearance change – No less than 4-5	ASTM D4966-2012 Pressure – 9 kPa Abradant – worsted wool

APPENDIX “A” (ENGLISH)

Detailed Washing Instructions

The Motorcycle Jacket and Trousers are designed to be abrasion resistance, breathable, waterproof and water & wind repellent. The best way to maintain the performance of the jacket and trousers is to **keep it clean and wash it regularly**.

Remove elbow, shoulder, hip and knee padding. Remember the direction the padding has been inserted and replace properly after cleaning.

Machine Wash:

Close all zippers, fasteners, hook and loop tape before washing.

Wash in domestic or commercial machine in water not exceeding 40° C with permanent press setting using liquid detergent. (ie. Liquid Tide, Liquid Cheer)

If heavily soiled, pre-treating using a heavy-duty liquid detergent or any off-the-shelf laundry pre-treatment product may be used. (ie. Liquid Spray & Wash, Liquid Shout). **Do not use Fabric Softener or Bleach.**

Drying:

Do **not** tumble dry.

Dry Cleaning:

If professionally dry cleaned, normal cycle with Petroleum solvent only for a mild or permanent press cycle or a very gentle professional wet cleaning.

Iron:

Iron with or without steam by hand, or press on commercial equipment, at a low temperature not exceeding 110° C.

Detailed Washing Instructions

The Z-Liner is a waterproof, breathable membrane and is to be worn in conjunction with the Motorcycle Jacket. The best way to maintain the performance of the Z-liner is to **keep it clean and wash it regularly.**

Machine Wash:

Wash separately on permanent press on warm not exceeding 40°C.

Do not use Fabric Softener or Bleach

Drying:

Do **not** tumble dry – lay flat

Dry Cleaning:

If professionally dry cleaned, low heat and short cycle with petroleum solvent only or very gentle professional wet cleaning.

Iron:

Iron with or without steam by hand, or press on commercial equipment, at a low temperature not exceeding 110° C.

Detailed Washing Instructions

The soft shell jacket is to be worn as a standalone garment or worn under the motorcycle jacket as an additional layer. The material will provide a high level of durability, water resistance, windproofness and breathability. The best way to maintain the performance of the jacket is to **keep it clean and wash it regularly.**

Machine Wash:

Close all zippers, fasteners, hook and loop tape before washing.

Wash in domestic or commercial machine in water not exceeding 40° C with permanent press setting using liquid detergent. (ie. Liquid Tide, Liquid Cheer)

Do not use Fabric Softener or Bleach.

Drying:

Do **not** tumble dry.

Dry Cleaning:

If professionally dry cleaned, low heat and short cycle with petroleum solvent only or very gentle professional wet cleaning.

Iron:

Iron with or without steam by hand, or press on commercial equipment, at a low temperature not exceeding 110° C.

ANNEXE “A” (FRENCH)

Instructions détaillées pour le lavage

Le blouson et le pantalon de motocycliste sont conçus pour être résistants à l’abrasion, imperméables à l’eau et perméables à la transpiration, hydrofuges et résistants au vent. La meilleure façon de préserver les propriétés du blouson et du pantalon est de les **garder propres en les lavant régulièrement.**

Retirer les pièces de rembourrage au niveau des coudes, des épaules, des hanches et des genoux. Noter la façon dont les pièces de rembourrage sont placées afin de les remettre correctement en place après le nettoyage.

Lavage à la machine :

Fermer toutes les fermetures à glissière, les attaches et les attaches à ruban autoagrippant avant le lavage.

Laver à la machine (domestique ou commerciale) dans de l’eau ne dépassant pas 40 °C, au cycle de lavage pour tissu à pressage permanent, avec un détergent liquide (p. ex. Tide liquide, Cheer liquide).

Si le vêtement est très sale, frotter les tâches à l’aide d’un détergent liquide industriel ou utiliser un détachant pour lessive commercial (p. ex. Spray & Wash liquide, Shout liquide). ***Ne pas utiliser d’agent assouplissant ni d’agent de blanchiment.***

Séchage :

Ne **pas** sécher par culbutage.

Nettoyage à sec :

Si le vêtement est envoyé chez un nettoyeur à sec professionnel, demander un nettoyage normal avec solvant pétrolier seulement au cycle délicat ou pour tissu à pressage permanent, ou un nettoyage par voie humide au cycle très délicat.

Repassage :

Repasser à basse température (au plus 110 °C) à l’aide d’un fer avec ou sans vapeur ou d’équipement commercial.

Instructions détaillées pour le lavage

La doublure zippée est imperméable à l'eau et perméable à la transpiration et est conçue pour être portée avec le blouson de motocycliste. La meilleure façon de préserver les propriétés de la doublure zippée est de la **garder propre en la lavant régulièrement**.

Lavage à la machine :

Laver séparément à l'eau tiède ne dépassant pas 40 °C, au cycle de lavage pour tissu à pressage permanent.

Ne pas utiliser d'agent assouplissant ni d'agent de blanchiment.

Séchage :

Ne **pas** sécher par culbutage – sécher à plat.

Nettoyage à sec :

Si le vêtement est envoyé chez un nettoyeur à sec professionnel, demander un nettoyage à basse température avec solvant pétrolier seulement au cycle court, ou un nettoyage par voie humide au cycle très délicat.

Repassage :

Repasser à basse température (au plus 110 °C) à l'aide d'un fer avec ou sans vapeur ou d'équipement commercial.

Instructions détaillées pour le lavage

La doublure à coquille souple est conçue pour être portée seule ou sous le blouson de motocycliste comme épaisseur supplémentaire. Elle offre un niveau élevé de durabilité et est résistante à l'eau et au vent et perméable à la transpiration. La meilleure façon de préserver les propriétés de la doublure à coquille souple est de la **garder propre en la lavant régulièrement.**

Lavage à la machine :

Fermer toutes les fermetures à glissière, les attaches et les attaches à ruban autoagrippant avant le lavage.

Laver à la machine (domestique ou commerciale) dans de l'eau ne dépassant pas 40 °C, au cycle de lavage pour tissu à pressage permanent, avec un détergent liquide (p. ex. Tide liquide, Cheer liquide).

Ne pas utiliser d'agent assouplissant ni d'agent de blanchiment.

Séchage :

Ne **pas** sécher par culbutage.

Nettoyage à sec :

Si le vêtement est envoyé chez un nettoyeur à sec professionnel, demander un nettoyage à basse température avec solvant pétrolier seulement au cycle court, ou un nettoyage par voie humide au cycle très délicat.

Repassage :

Repasser à basse température (au plus 110 °C) à l'aide d'un fer avec ou sans vapeur ou d'équipement commercial.

Appendix B
RCMP MOTORCYCLE JACKET & PANTS
Special Made Measurement Form

Date:		Shipping Address:		
Name:				
Reg #				
Height:	Ft./inches	Phone # :		
Weight:	lbs	Circle One:	Male	Female

It is important that the information provide is accurate as we are not responsible for incorrect information. So please follow the information carefully by getting properly measured to establish the proper sizing required for each individual made to measure garment for the Motorcycle Program.

With BODY ARMOUR ON

Measurements for Jacket & Pants

Without Body Armour

With BODY ARMOUR ON			Measurements for Jacket & Pants	Without Body Armour		
Inches				Inches		
1	Neck			2A	Chest	
2	Chest			8	Back to Waist (top of duty belt)	
3	Bicep			8A	Back to Waist (bottom of duty belt)	
4	Forearm			9	Fr to W-standing	
5	Shoulder			9A	Fr to W-sitting	
6	Elbow			10A	Stomach	
7	Arm			11	Waist	
8A	Back to Waist to bottom of duty belt					
9	Front to Waist Standing (top of duty belt)					
9A	Front to Waist Standing (bottom of duty belt)					
10	Stomach – around the largest part					
11	Waist					
11A	Waist Size worn normally					
12	Hip					
13	Outseam					
14	Rise					
15	Thigh Circumference					
16	Calf Circumference					
17 a	Inseam with shoes					
17b	Inseam with shoes while sitting					
18	Knee Position along inseam while sitting or with foot on a stool					

Appendix B

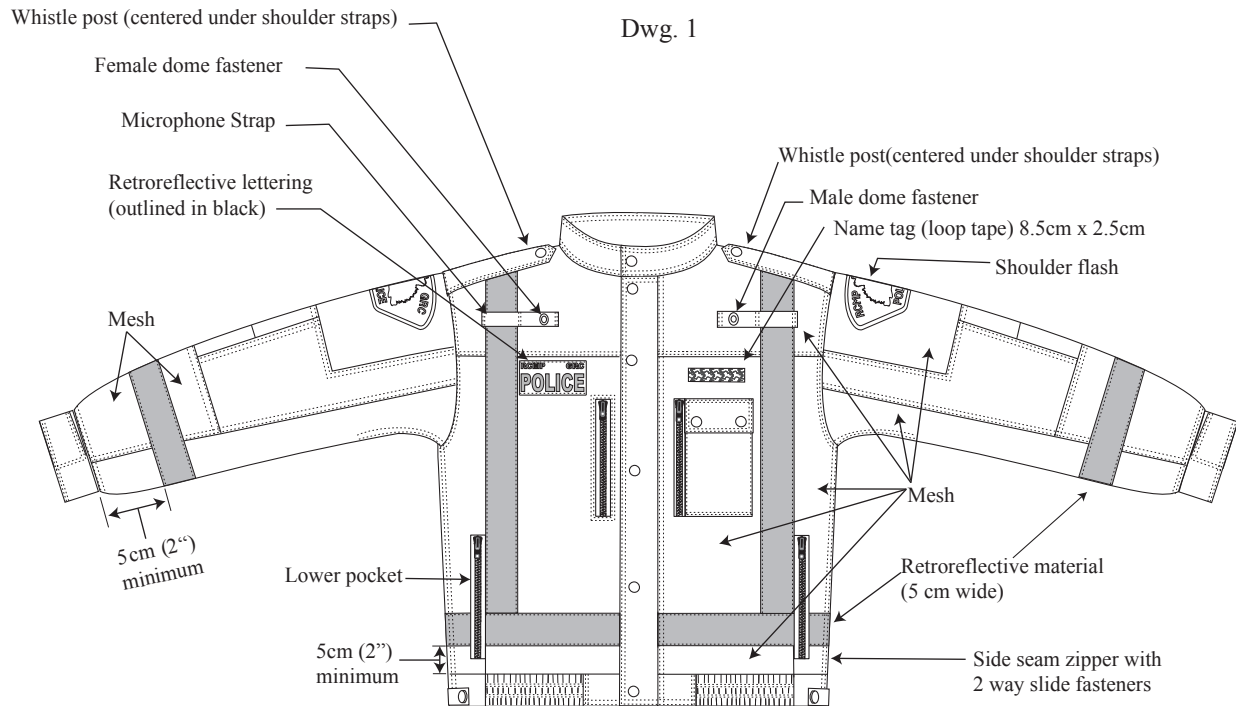
Measurement Definition taken **WITH BODY ARMOUR ON**

1	Neck	Shirt Neck Size
2	Chest	Measure the largest part of the Chest with the body armour.
3	Bicep	Measure the largest part of the Upper Arm.
4	Forearm	Measure the largest part of the Lower Arm.
5	Shoulder	Measure from the base of neck (top of spine) to outer edge of shoulder.
6	Elbow	Measure from the Shoulder measurement to Elbow (bend elbow at 90 degree measure to center of elbow bone).
7	Arm	Measure from the elbow measurement to where you would like cuff to end.
8	Back to Waist	Measure from the base of neck (top of spine) to top of duty belt.
8A	Back of Waist	Measure from the base of neck (top of spine) to bottom of duty belt.
9	Front to Waist Standing	Measure from the small of the neck to top of duty belt while standing.
9A	Front to Waist Standing	Measure from the small of the neck to the bottom of duty belt while standing.
10	Stomach Circumference	Measure largest part of the stomach with the body armour.
11	Waist Circumference	Measure where the pants are worn around the waist. Please ensure the measuring tape is against the body and not over the duty belt.
11A	Waist Size worn normally	Size of trousers normally worn.
12	Hip Circumference	Measure around the largest part of the hips.
13	Outseam	Measure from the top of the pants waistband at the side seam to hem 1" above floor with shoes.
14	Rise	Measure from the top of the front pants waistband around the crotch to top of back pants waistband.
15	Thigh Circumference	Measure the largest part of the upper leg.
16	Calf Circumference	Measure the largest part of the lower leg.
17a	Inseam	Measure the Inside of the leg from the crotch to hem 1" above the floor with shoes on.
17b	Inseam while sitting	Measure the Inside of the leg while sitting from the crotch to hem 1" above the floor with shoes on with leg bent at 90 degree.
18	Knee Position along inseam while sitting or with foot on a stool.	With knee bent at 90 degree while sitting or with foot on a stool, measure the inside of leg from the knee to the hem.

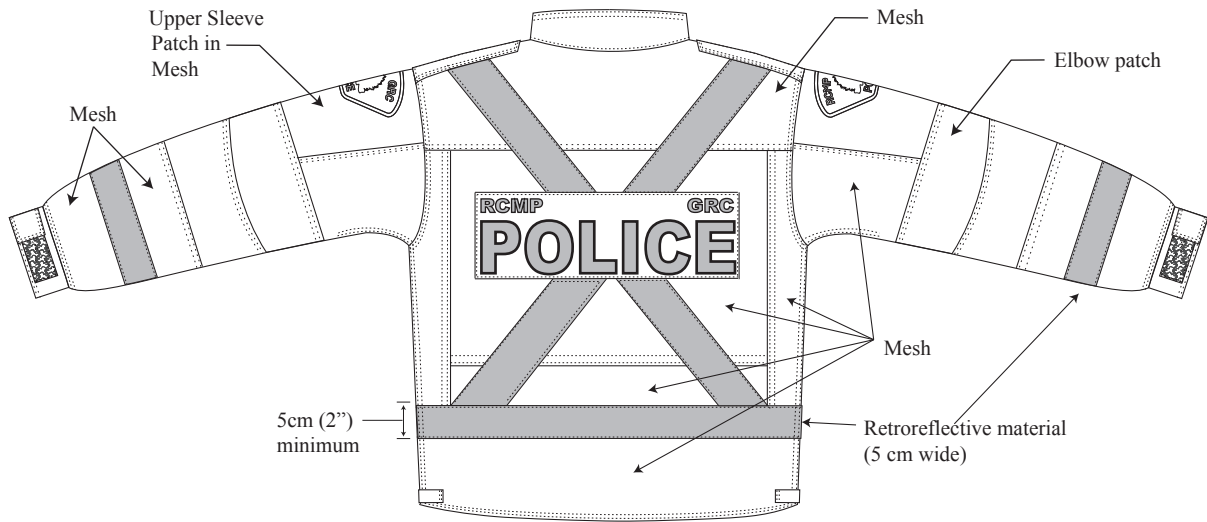
Measurement Definition taken **WITHOUT Body Armour**

2A	Chest	Measure the largest part of the Chest without the body armour.
8	Back to Waist	Measure from the base of the neck (top of spine) to top of duty belt.
8A	Back to Waist plus 2"	Measure from the base of the neck (top of spine) to top of duty belt and add 2" to the measurement.
9	Front to Waist Standing	Measure while standing from the small of the neck to the top of the duty belt.
9A	Front to Waist Sitting	Measure while sitting from the small of the neck to the top of the duty belt.
10A	Stomach	Measure around the largest part of the stomach.
11	Waist	Measure around the largest part of the waist.

Jacket, Motorcycle High Visibility



Front View

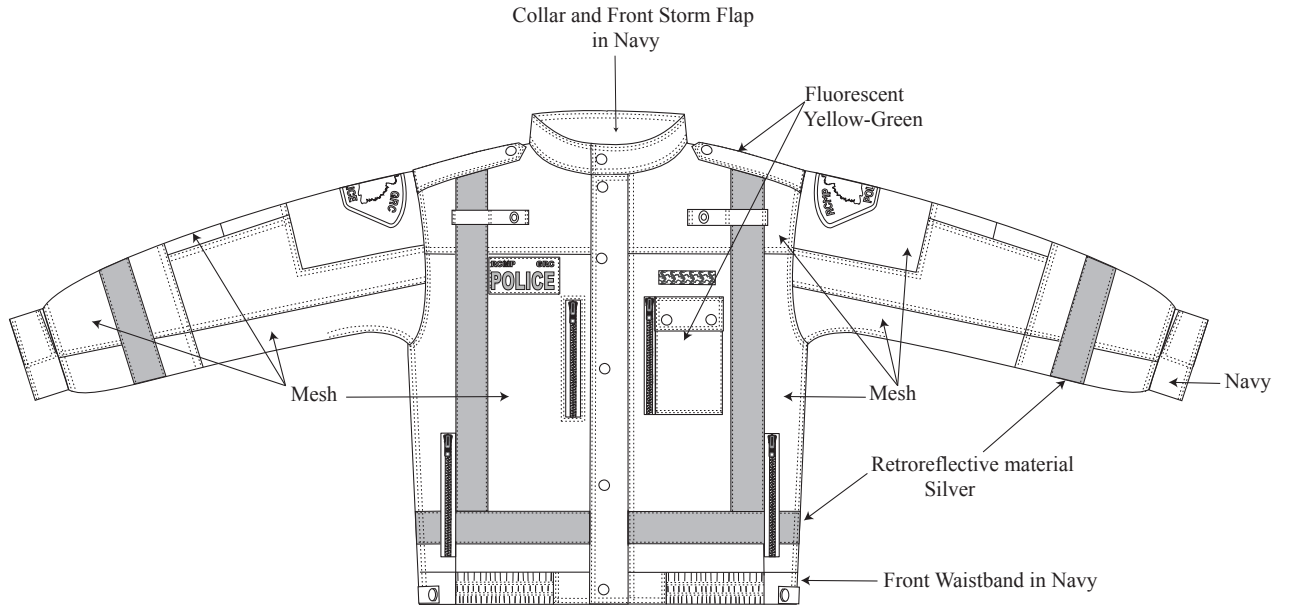


Rear View

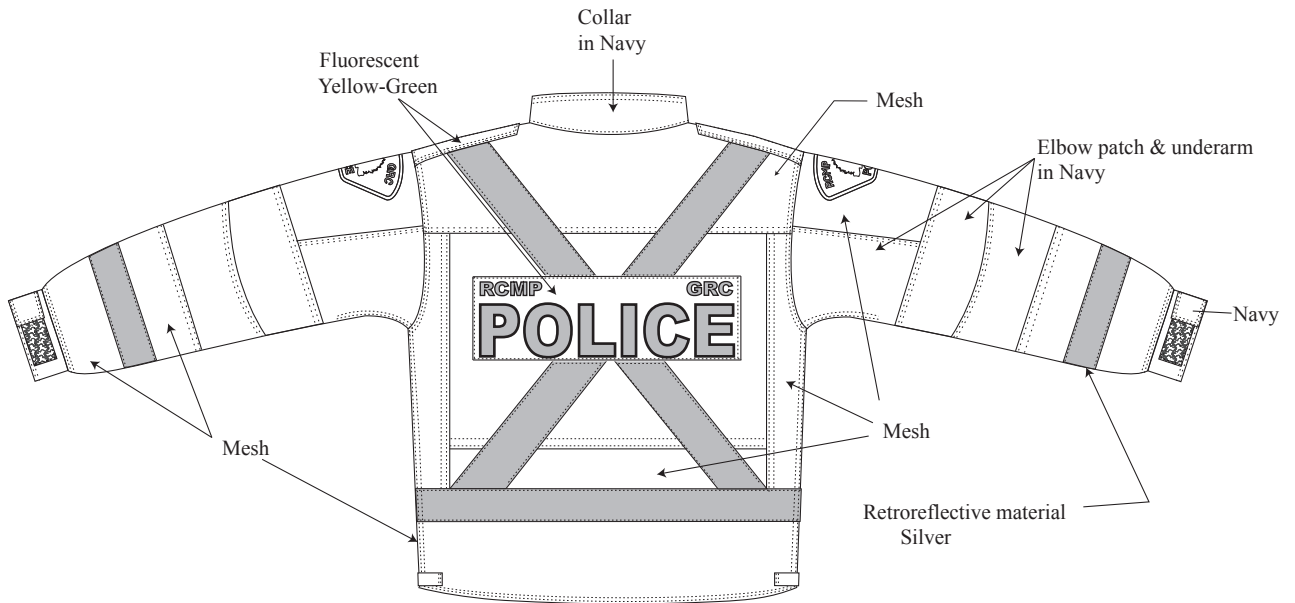
All Measurements in Centimeters
Unless otherwise stated all measurements are subject to ± 0.5 cm tolerances
NOT TO SCALE

Jacket, Motorcycle High Visibility

Dwg. 2



Front View

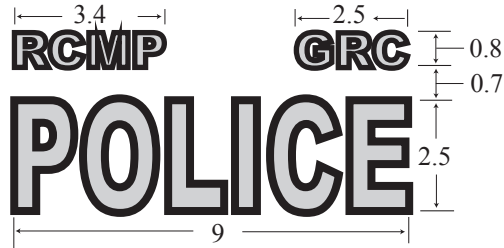


Rear View

All Measurements in Centimeters
Unless otherwise stated all measurements are subject to ± 0.5 cm tolerances
NOT TO SCALE

Jacket, Motorcycle High Visibility

Dwg. 3



Front Retro-reflective Lettering

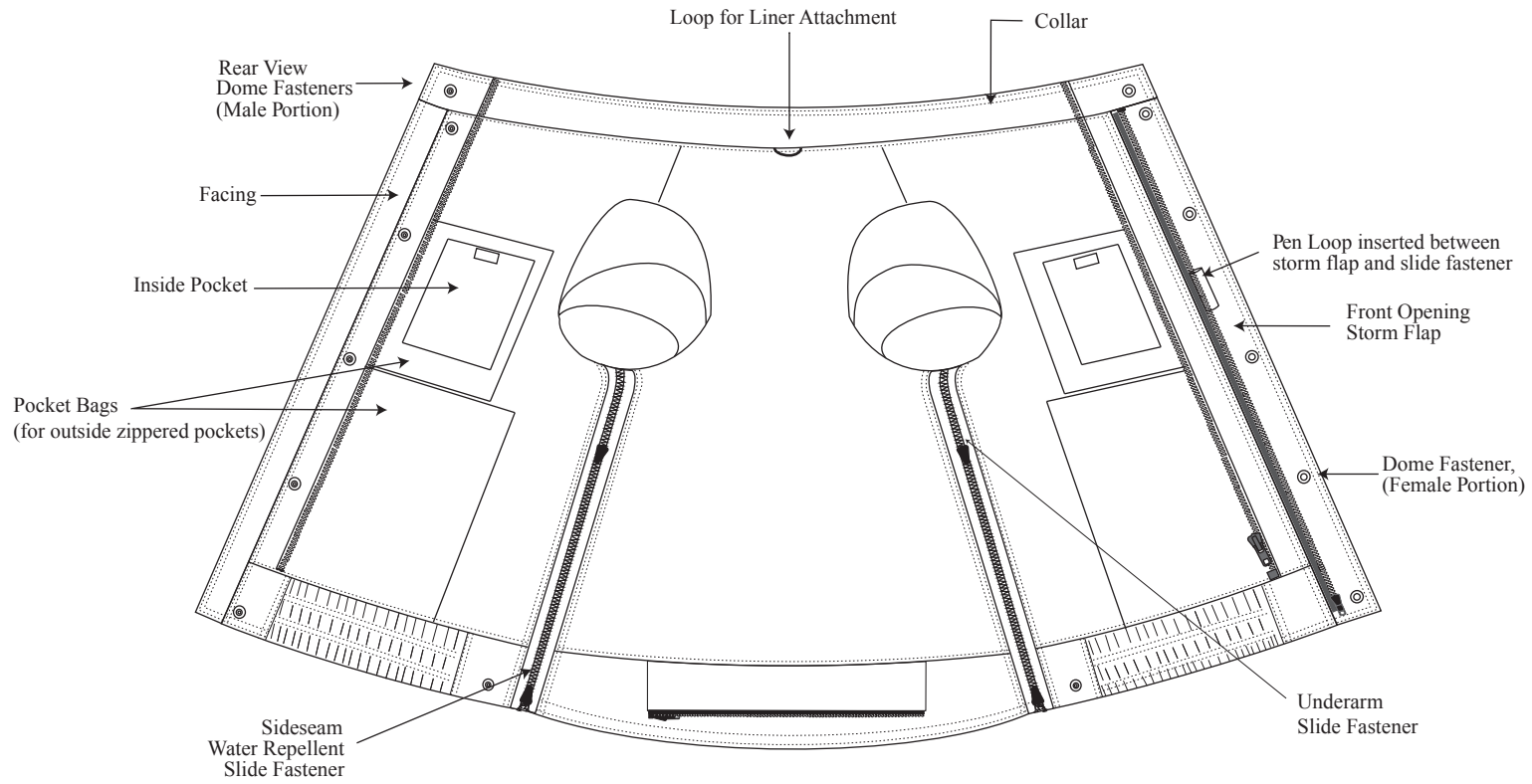


Back Retro-reflective Lettering

Jacket, Motorcycle High Visibility

Inside Jacket Detail

Dwg. 4



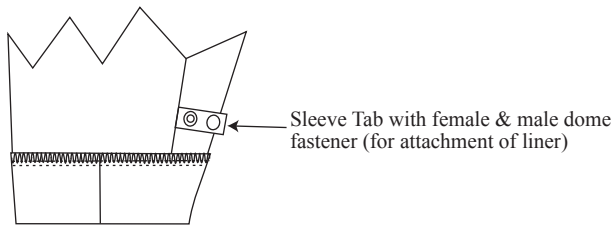
Inside Jacket

All Measurements in Centimeters
Unless otherwise stated all measurements are subject to ± 0.5 cm tolerances
NOT TO SCALE

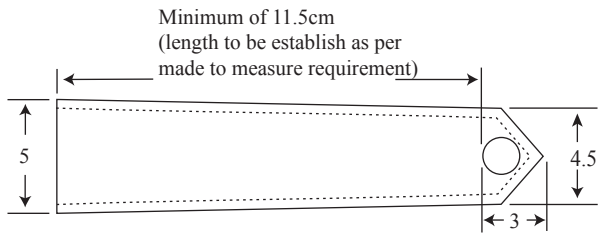
Jacket, Motorcycle High Visibility

Underarm Detail & Shoulder Strap Detail

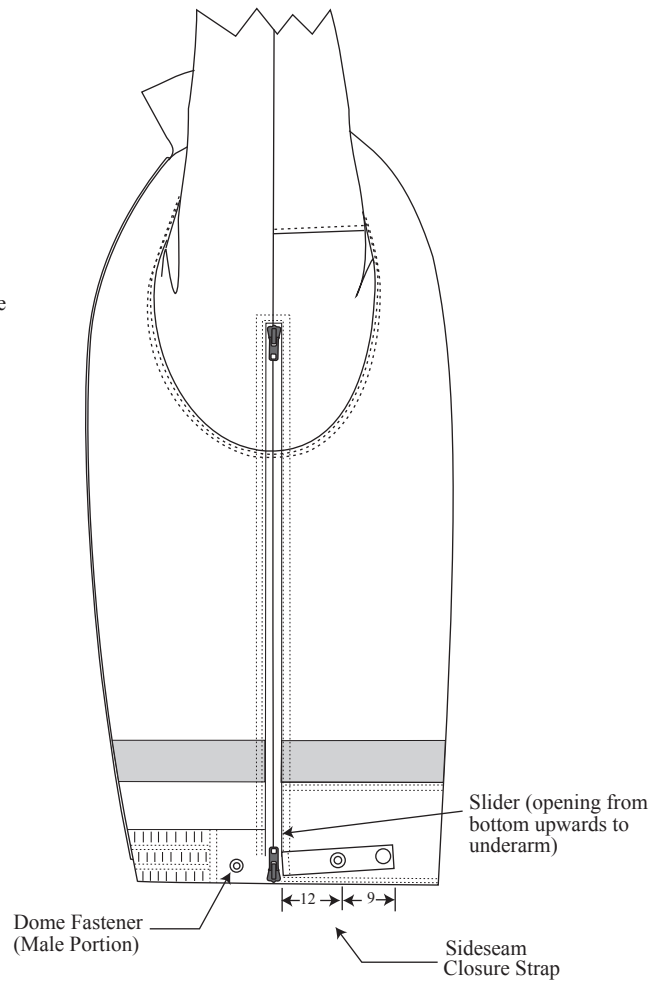
Dwg. 5



Inside Cuff Detail - Underarm Seam



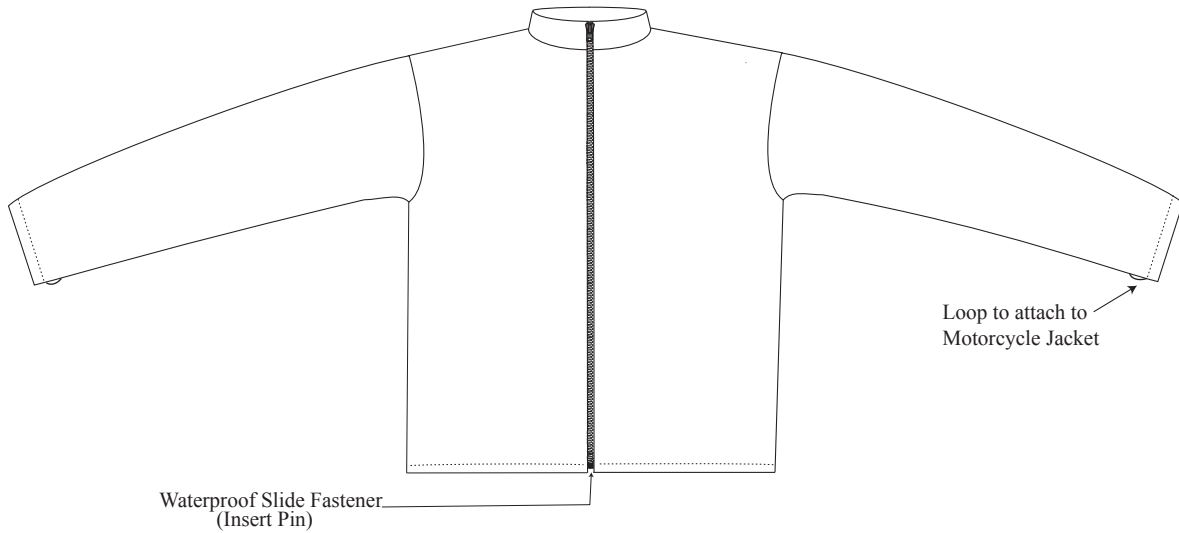
Shoulder Strap Detail



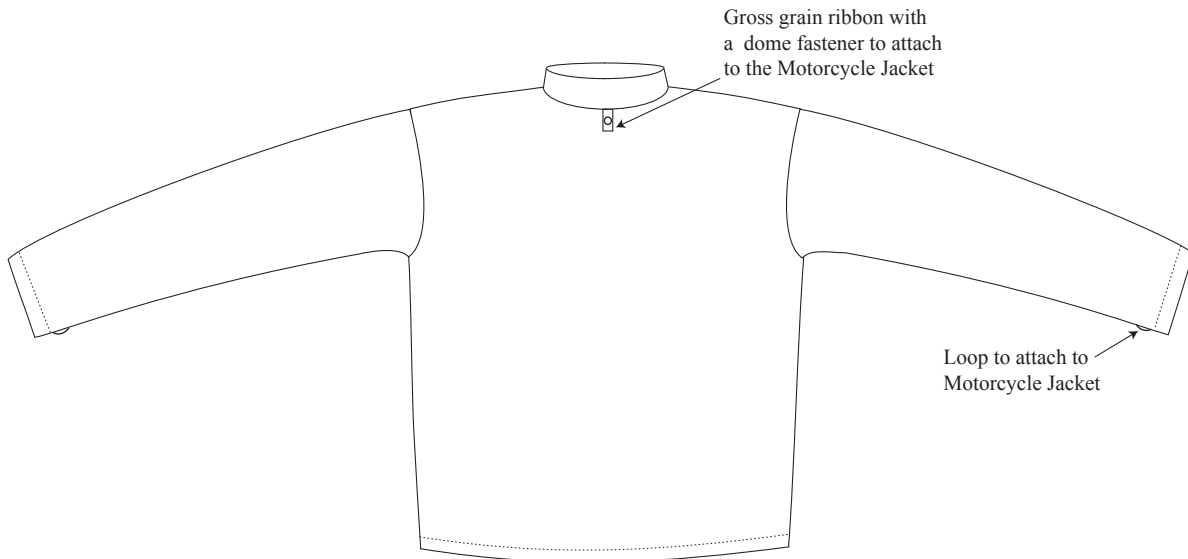
Outer Side View

Jacket, Motorcycle High Visibility Z-Liner

Dwg. 6



Front View



Rear View

Jacket, Motorcycle

G.S.1045-313

Jacket, Motorcycle High Visibility Z-Liner

Underarm View

Dwg. 7



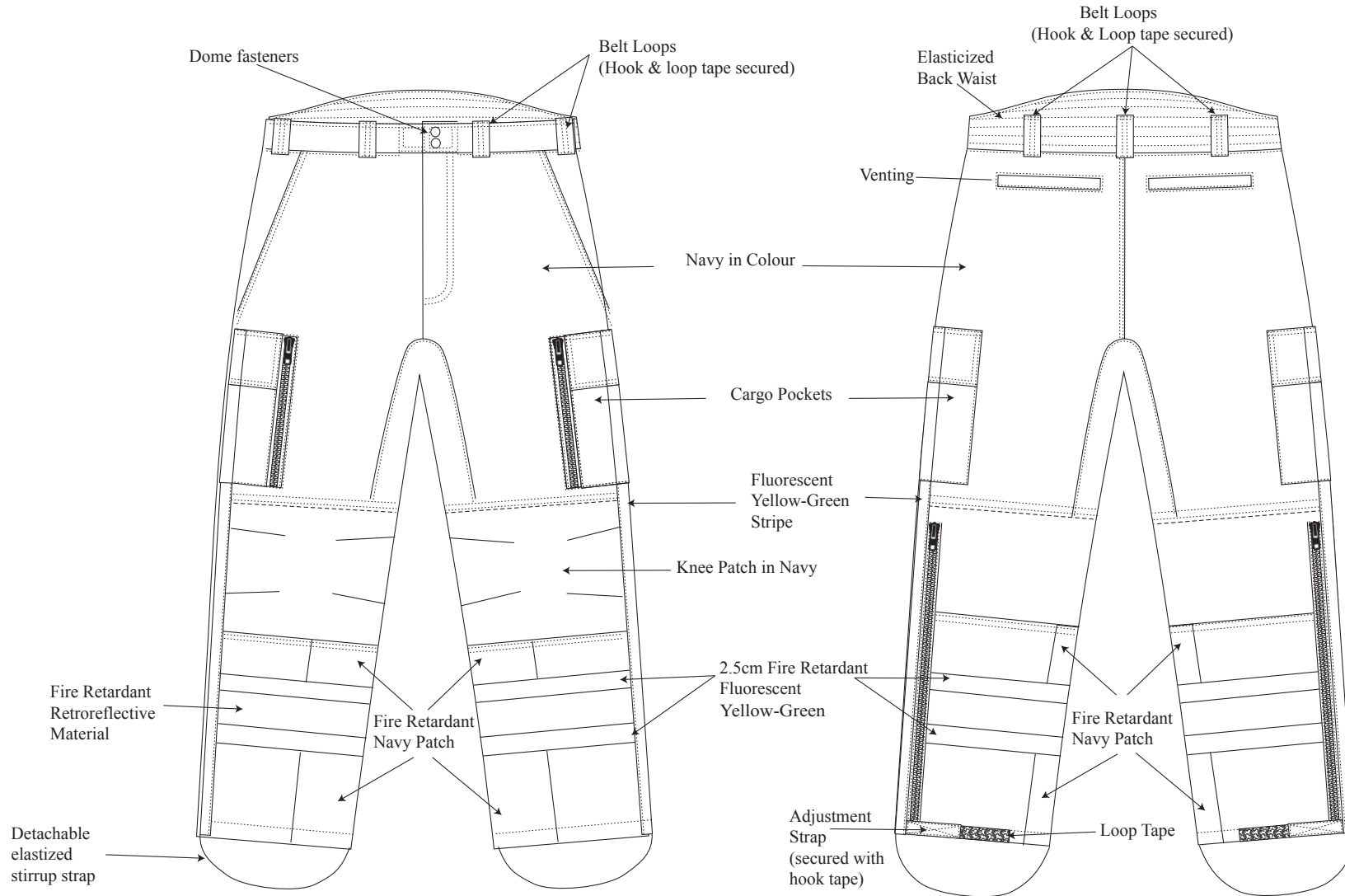
Side View

All Measurements in Centimeters
Unless otherwise stated all measurements are subject to ± 0.5 cm tolerances
NOT TO SCALE

Trousers, Motorcycle

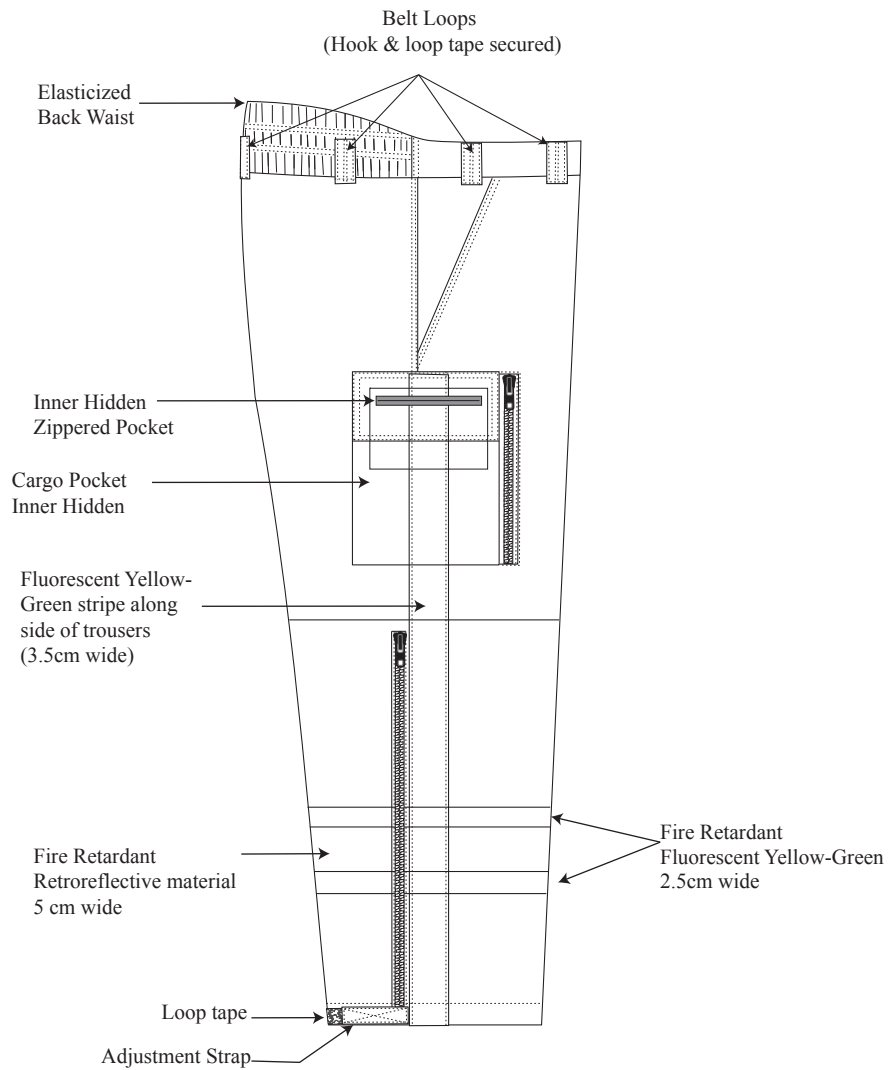
G.S.1045-313

Dwg. 8

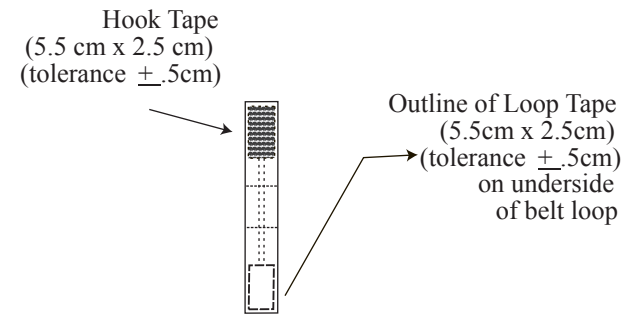


All Measurements in Centimeters
Unless otherwise stated all measurements are subject to ± 0.5 cm tolerances
NOT TO SCALE

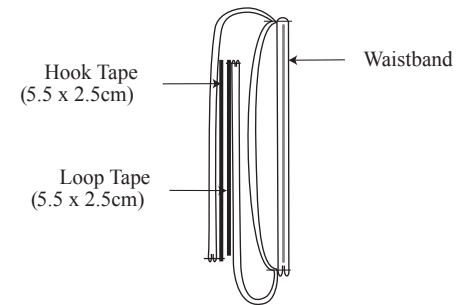
Dwg. 9



Trouser Side View



Belt Loop Details

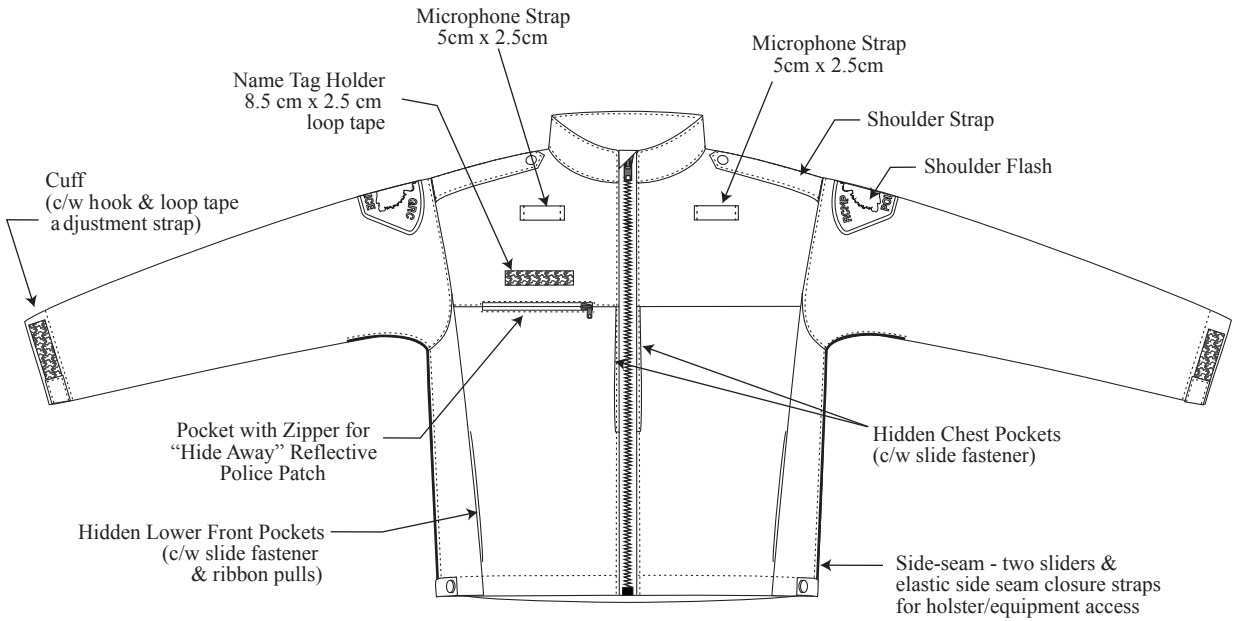


Belt Loop Side View

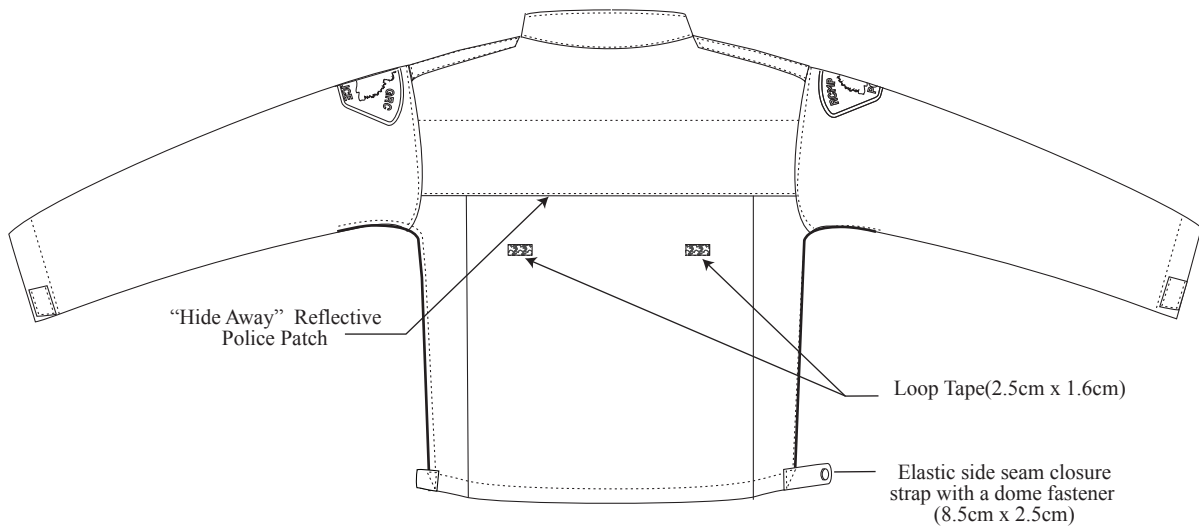
All Measurements in Centimeters
Unless otherwise stated all measurements are subject to ± 0.5 cm tolerances
NOT TO SCALE

Jacket, Motorcycle Soft Shell

Dwg. 10



Front View



Back View

All Measurements in Centimeters
Unless otherwise stated all measurements are subject to ± 0.5 cm tolerances
NOT TO SCALE