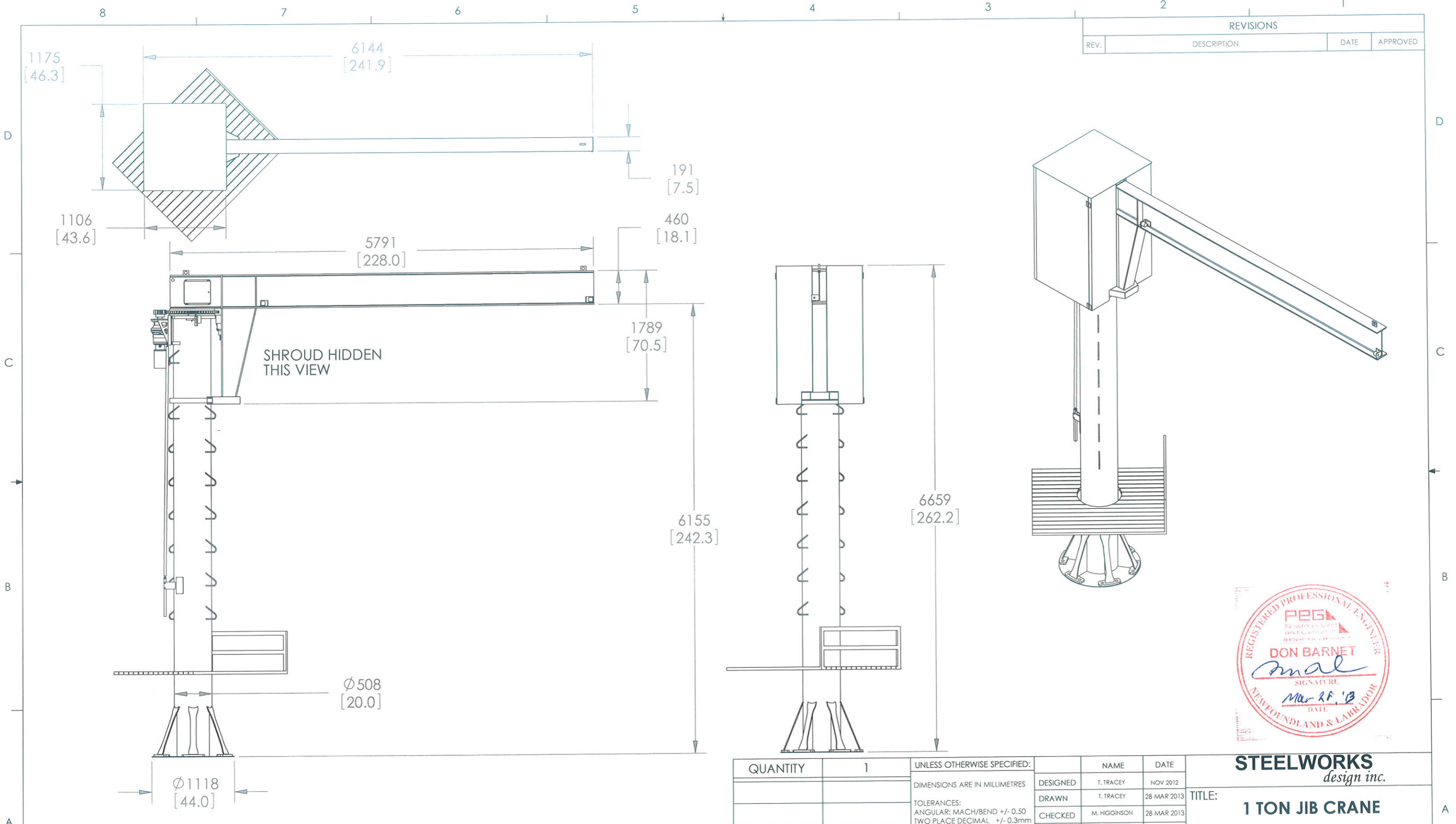


REVISIONS			
REV.	DESCRIPTION	DATE	APPROVED



LOCATION: GREEN ISLAND, NFLD

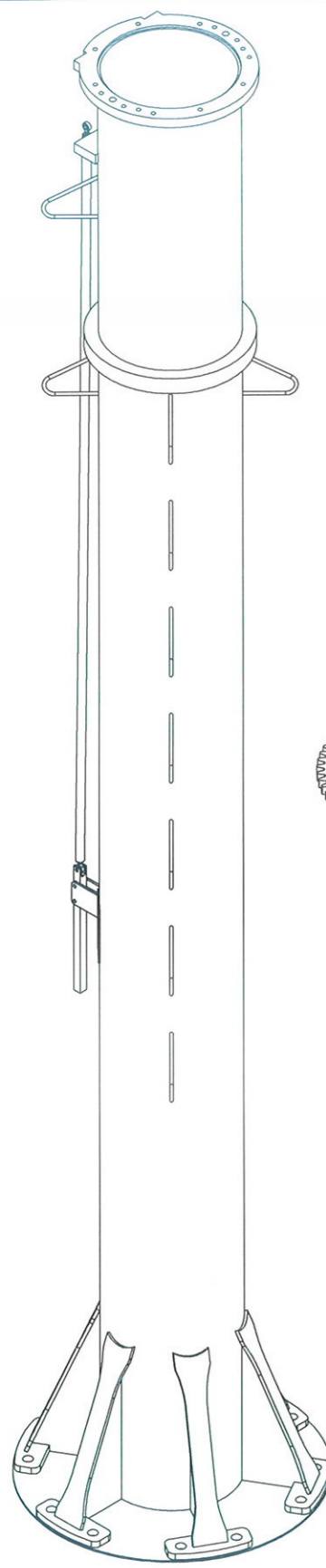
PROPRIETARY AND CONFIDENTIAL
 THE INFORMATION CONTAINED IN THIS DRAWING IS THE SOLE PROPERTY OF STEELWORKS DESIGN INC.. ANY REPRODUCTION IN PART OR AS A WHOLE WITHOUT THE WRITTEN PERMISSION OF STEELWORKS DESIGN INC. IS PROHIBITED.

QUANTITY	1	UNLESS OTHERWISE SPECIFIED:	NAME	DATE
		DIMENSIONS ARE IN MILLIMETRES	DESIGNED	T. TRACEY NOV 2012
		TOLERANCES: ANGULAR: MACH/BEND +/- 0.50 TWO PLACE DECIMAL +/- 0.3mm THREE PLACE DECIMAL +/- 0.1mm	DRAWN	T. TRACEY 28 MAR 2013
		INTERPRET GEOMETRIC TOLERANCING PER: ANSI Y14.5	CHECKED	M. HIGGINSON 28 MAR 2013
		MATERIAL	ENG APPR.	M. HIGGINSON NOV 2012
		FINISH	MFG APPR.	R. TROTTER NOV 2012
NEXT ASSY	QUANTITY	DO NOT SCALE DRAWING	Q.A.	D. BARNET 26 MAR 2013
USED ON			STEELWORKS DESIGN INC. 2085 D WHITTINGTON DR. UNIT 6 CAVAN MONAGHAN, ON, CANADA K9J 0G5 P 705.743.5551 F 705.743.1135	

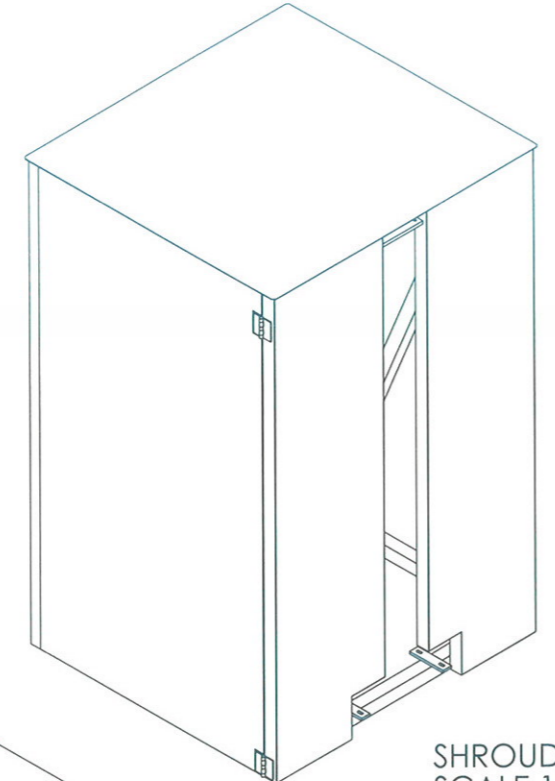
STEELWORKS <i>design inc.</i>			TITLE:	
			1 TON JIB CRANE	
SIZE	DWG. NO.	REV		
B	AD-12-172-001	0		
SCALE: NTS	WT: N/A	SHEET 1 OF 2		

GENERAL NOTES

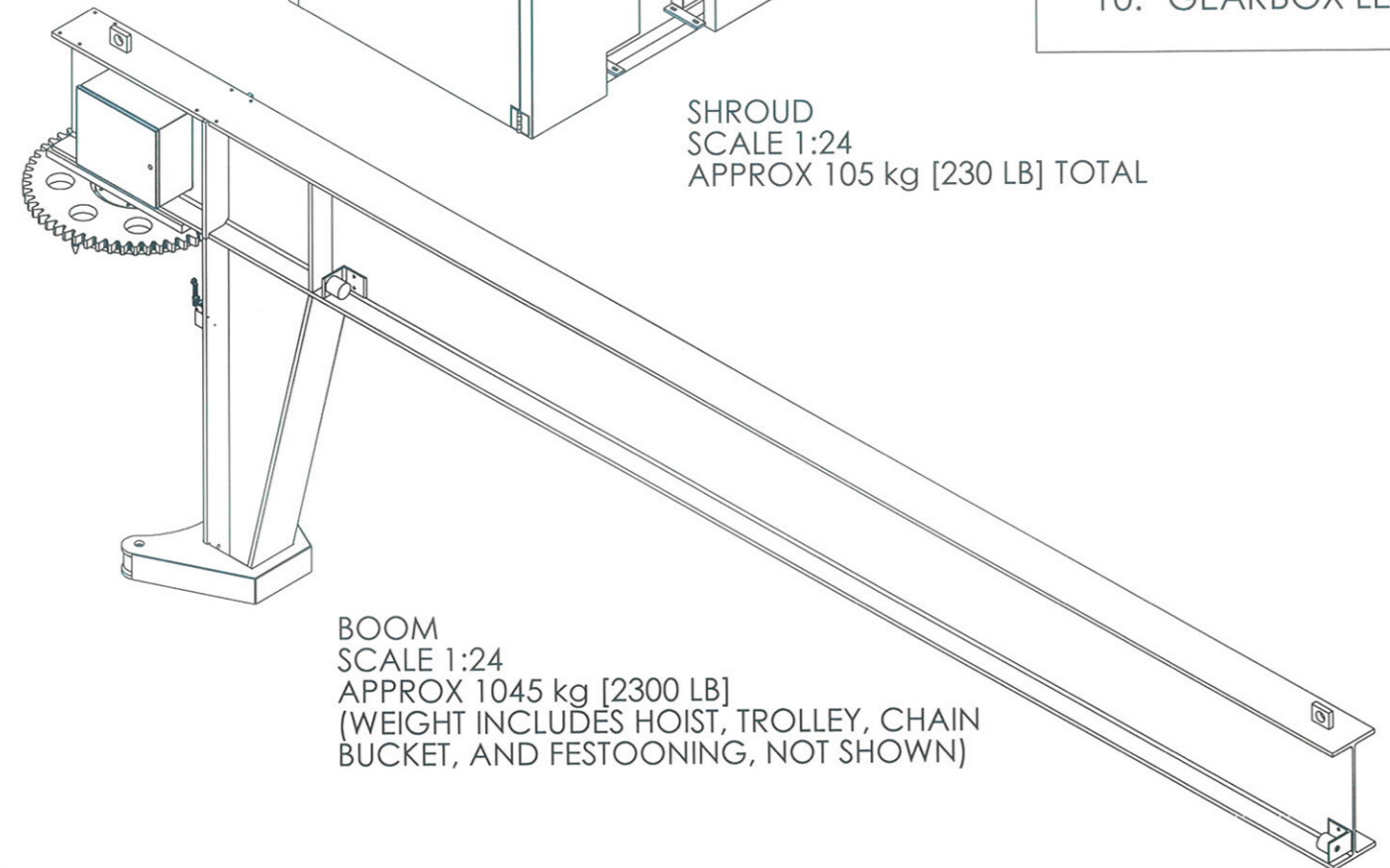
1. JIB CRANE RATED CAPACITY: 900 KG [2000 LB].
2. NEVER USE CRANE TO LIFT PEOPLE.
3. JIB CRANE TO BE INSTALLED, OPERATED, AND MAINTAINED IN ACCORDANCE WITH MANUAL OM-12-172-001 SUPPLIED BY STEELWORKS DESIGN INC. AND ISO 12480 CRANES - SAFE USE.
4. INDIVIDUAL COMPONENTS TO BE OPERATED AND MAINTAINED IN ACCORDANCE WITH MANUFACTURER'S DOCUMENTATION.
5. DO NOT OPERATE CRANE IN WIND EXCEEDING 50 km/hr.
6. ALWAYS USE FALL ARREST EQUIPMENT AND PROCEDURES IN ACCORDANCE WITH LOCAL REGULATIONS WHEN CLIMBING CRANE.
7. OWNER IS RESPONSIBLE TO ENSURE THE JIB CRANE FOUNDATION CAN SUPPORT THE INTENDED LOADS.
8. HOIST, TROLLEY, CHAIN BUCKET, AND FESTOONING NOT SHOWN.
9. DECK SHOWN IS REPRESENTATIONAL ONLY.
10. GEARBOX LEVER SHOWN IN THE OPERATIONAL POSITION.



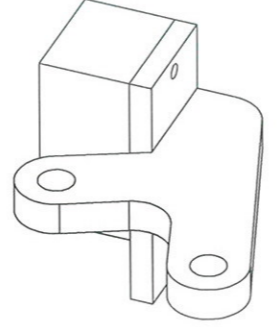
MAST
SCALE 1:24
APPROX 1045 kg [2300 LB]



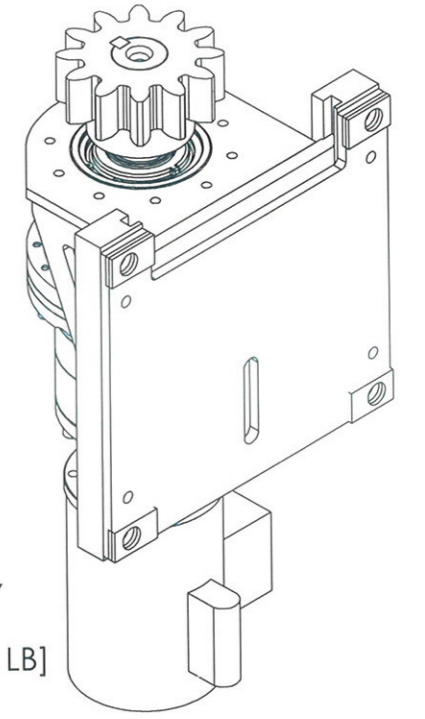
SHROUD
SCALE 1:24
APPROX 105 kg [230 LB] TOTAL



BOOM
SCALE 1:24
APPROX 1045 kg [2300 LB]
(WEIGHT INCLUDES HOIST, TROLLEY, CHAIN BUCKET, AND FESTOONING, NOT SHOWN)



ROTATION STOP
SCALE 1:4
1 RIGHT-HAND (SHOWN)
1 LEFT-HAND



GEARBOX ASSEMBLY
SCALE 1:8
APPROX 135 kg [300 LB]



PROPRIETARY AND CONFIDENTIAL
THE INFORMATION CONTAINED IN THIS DRAWING IS THE SOLE PROPERTY OF STEELWORKS DESIGN INC. ANY REPRODUCTION IN PART OR AS A WHOLE WITHOUT THE WRITTEN PERMISSION OF STEELWORKS DESIGN INC. IS PROHIBITED.

TOTAL QTY.	1	UNLESS OTHERWISE SPECIFIED:	DESIGNED	T. TRACEY	NOV 2012	STEELWORKS <i>design inc.</i>		
		DIMENSIONS ARE IN INCHES TOLERANCES: FRACTIONAL: 0.060" ANGULAR: MACH/BEND +/-0.50 TWO PLACE DECIMAL +/- 0.010" THREE PLACE DECIMAL +/-0.005"	DRAWN	T. TRACEY	28 MAR 2013			
		INTERPRET GEOMETRIC TOLERANCING PER: ANSI Y14.5	CHECKED	M. HIGGINSON	28 MAR 2013	SIZE	DWG. NO.	REV
		MATERIAL	ENG APPR.	M. HIGGINSON	NOV 2012	B	AD-12-172-001	0
NEXT ASSY	QUANTITY	FINISH	MFG APPR.	R. TROTTER	NOV 2012	SCALE: NTS		
			Q.A. APPR.	D. BARNET	26 MAR 2013	WT: N/A		
			STEELWORKS DESIGN INC. 2085 D WHITTINGTON DR. CAVAN MONAGHAN, ON, CANADA K9J 6X4			SHEET 2 OF 2		
USED ON		DO NOT SCALE DRAWING	P 705.743.5551	F 705.743.1135				