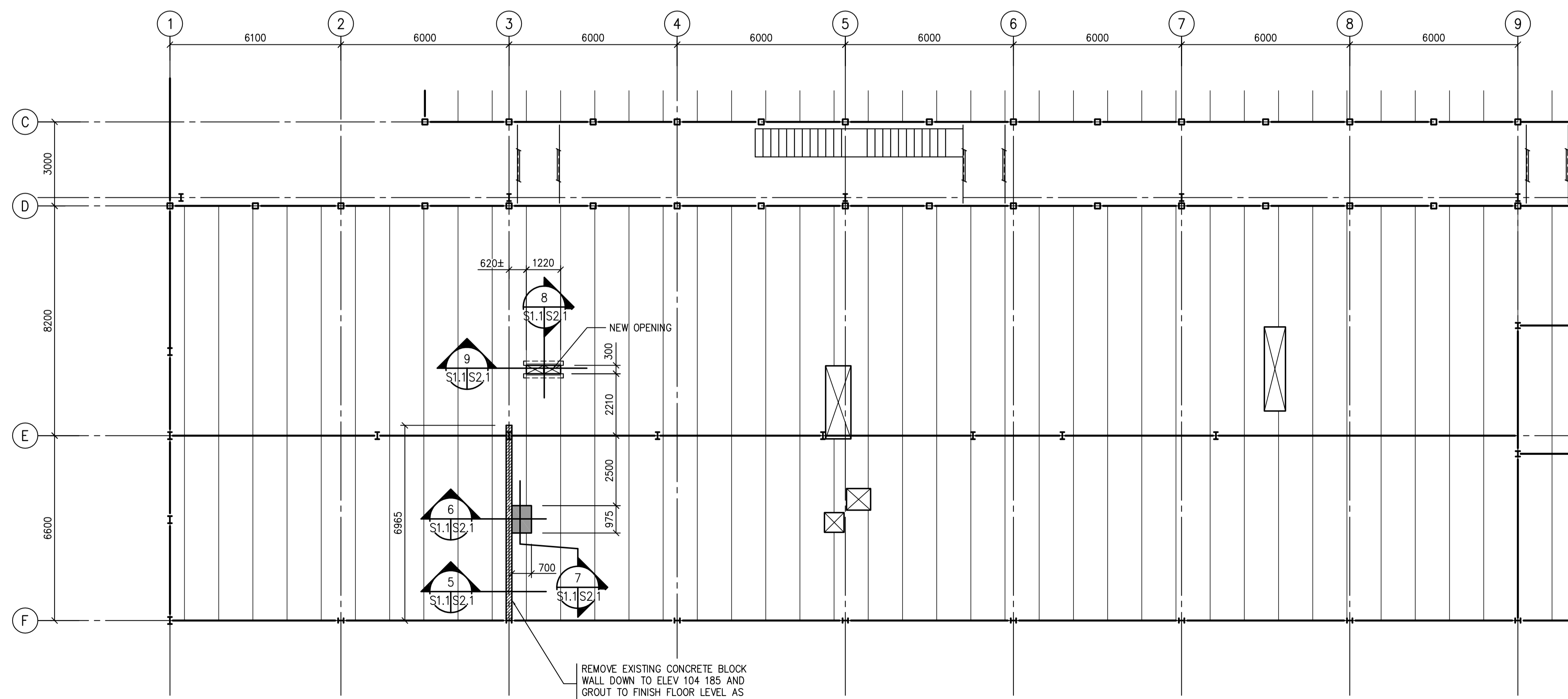
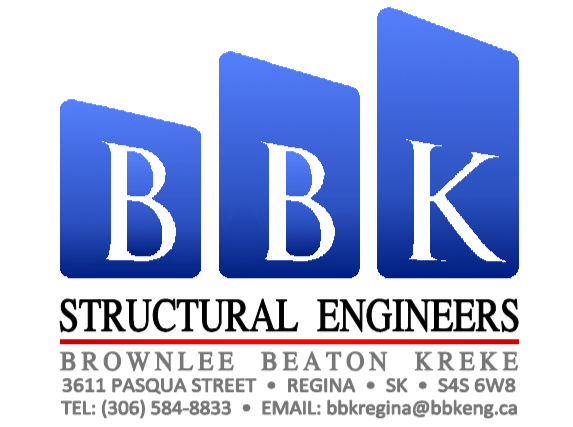


**1 PARTIAL MAIN FLOOR PLAN**  
 S1.1/S2.1 1 : 100  
 NORTH



**2 PARTIAL SECOND FLOOR PLAN**  
 S1.1/S2.1 1 : 100  
 NORTH



**DO NOT SCALE DRAWINGS**

Revision/Revision	Description/Description	Date/Date
0	ISSUED FOR TENDER	2016-03-11

Project title/Titre du projet

**INTERIOR FIT-UP  
 REGINA, SASKATCHEWAN**

Approved by/Approve par

Designed by/Concept par  
**S.K.**

Drawn by/Dessine par  
**B.R.**

Project Manager/Administrateur de Projets

Architectural and Engineering Resources Manager/  
 Ressources Architecturales et de Directeur d'ingénierie

Client/client

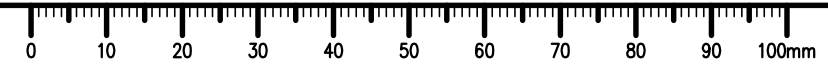
Drawing title/Titre du dessin

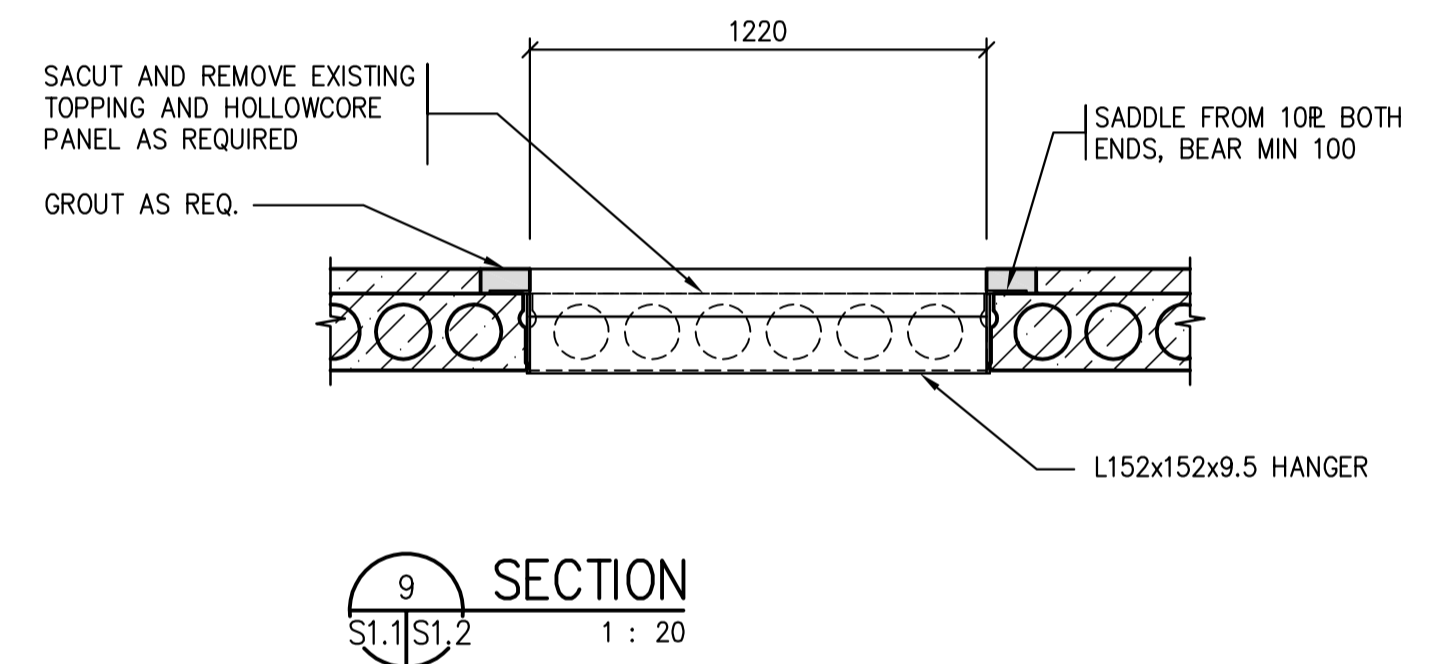
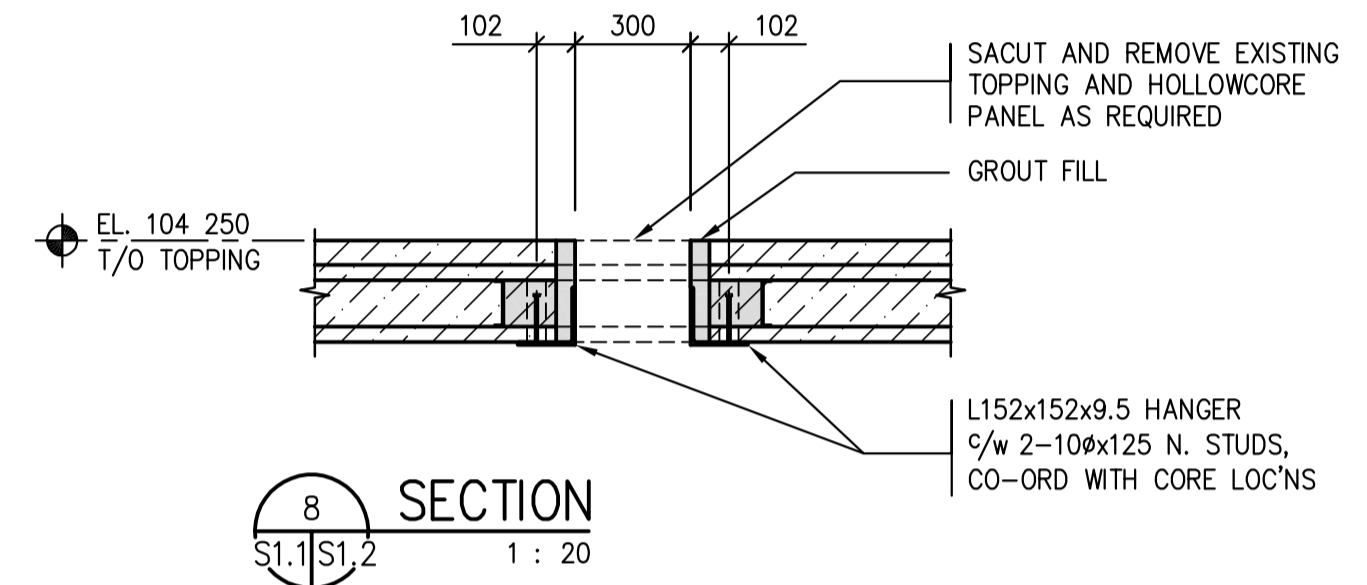
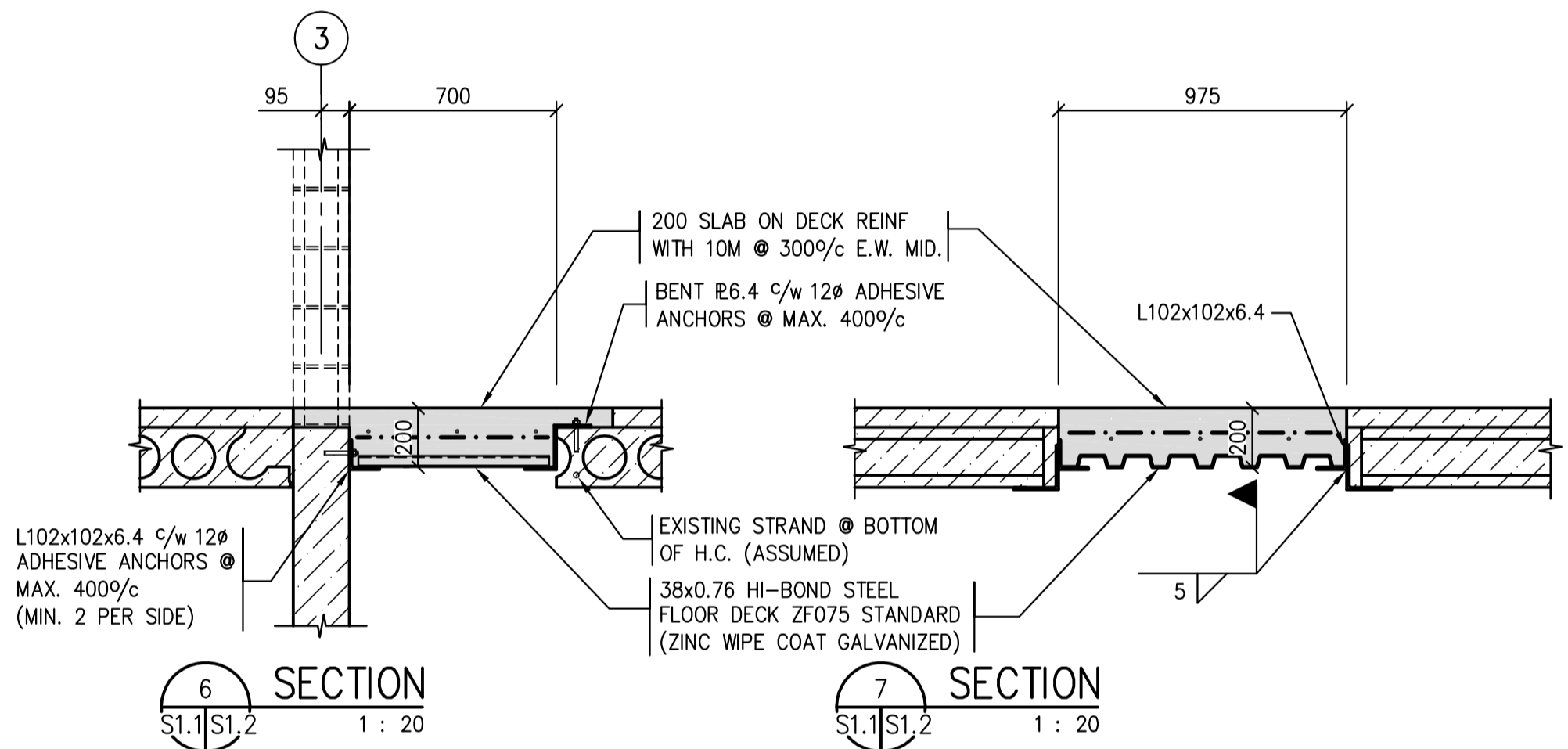
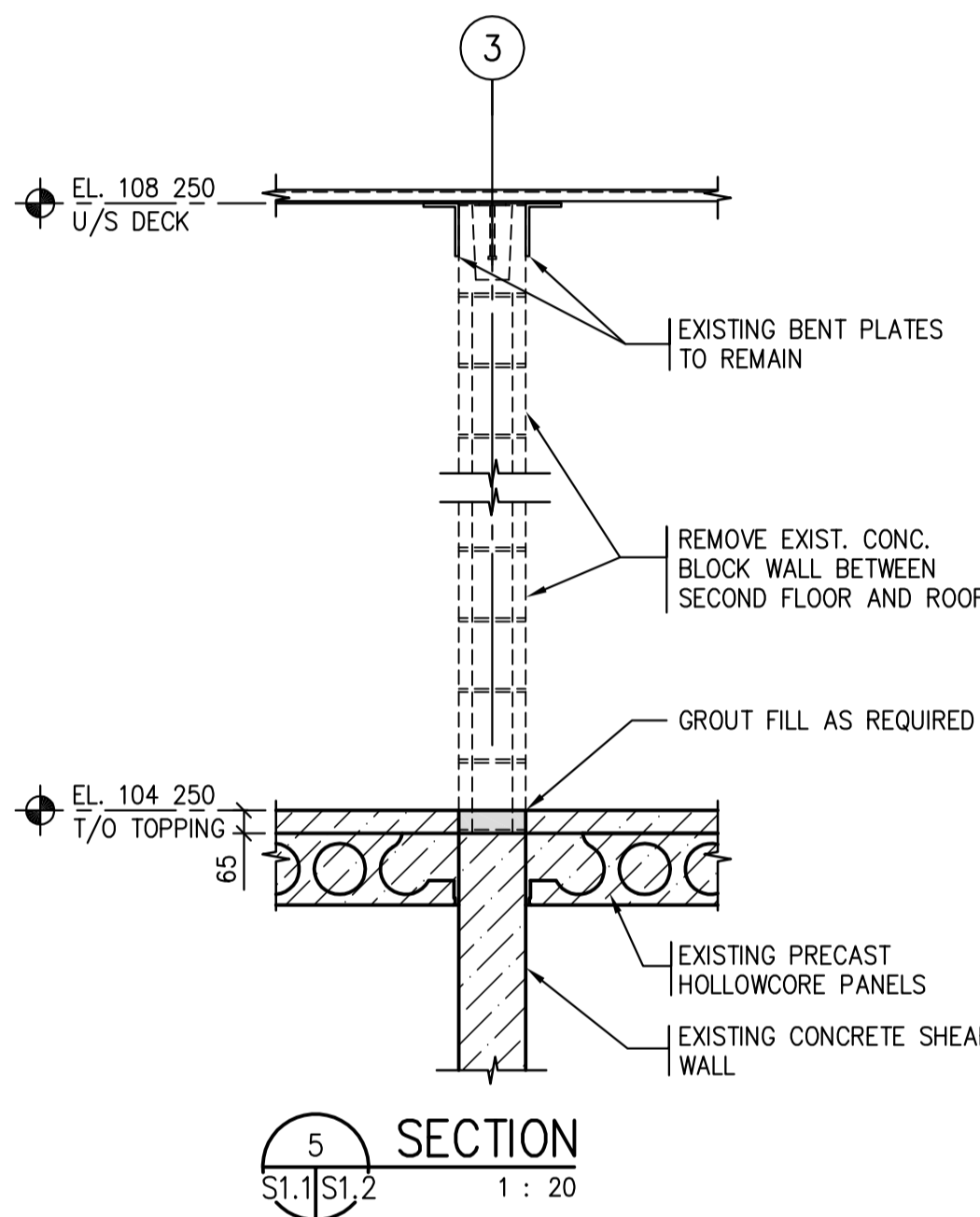
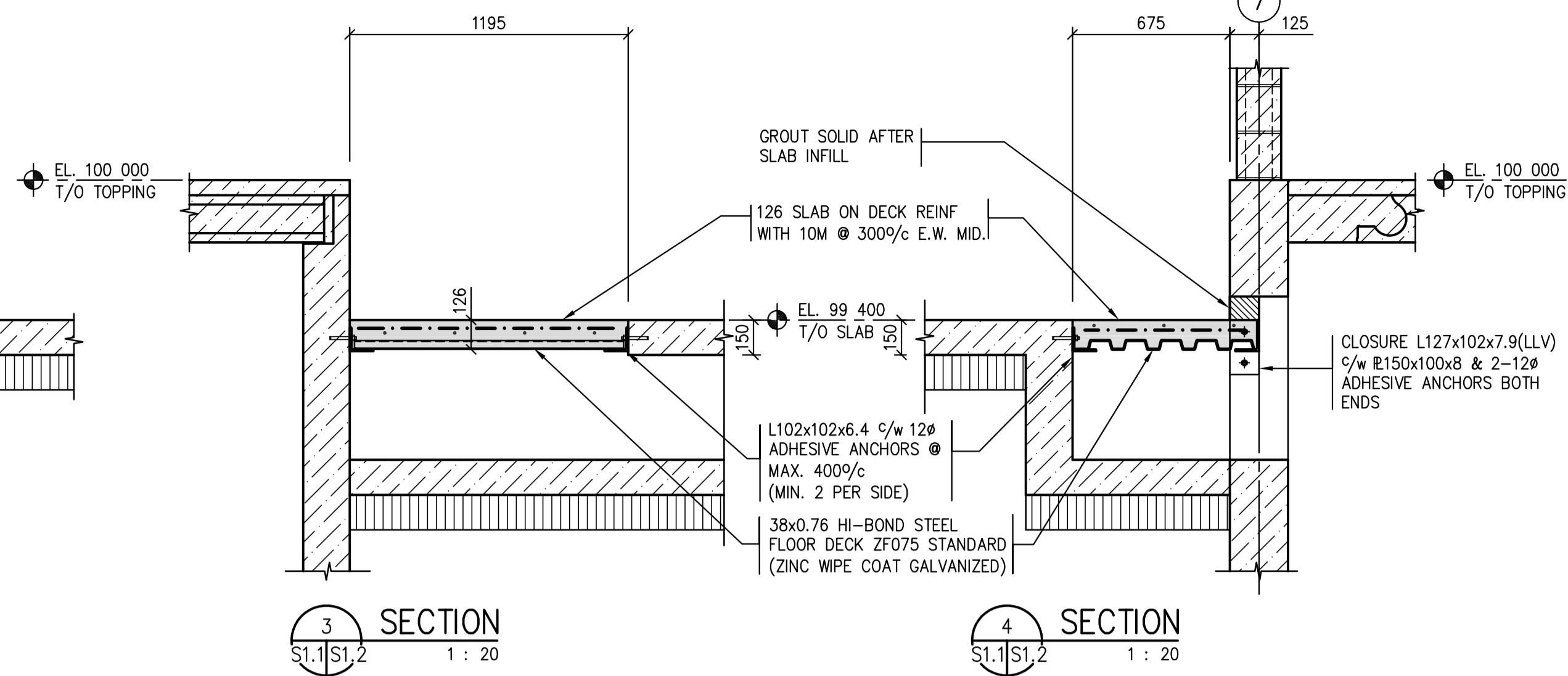
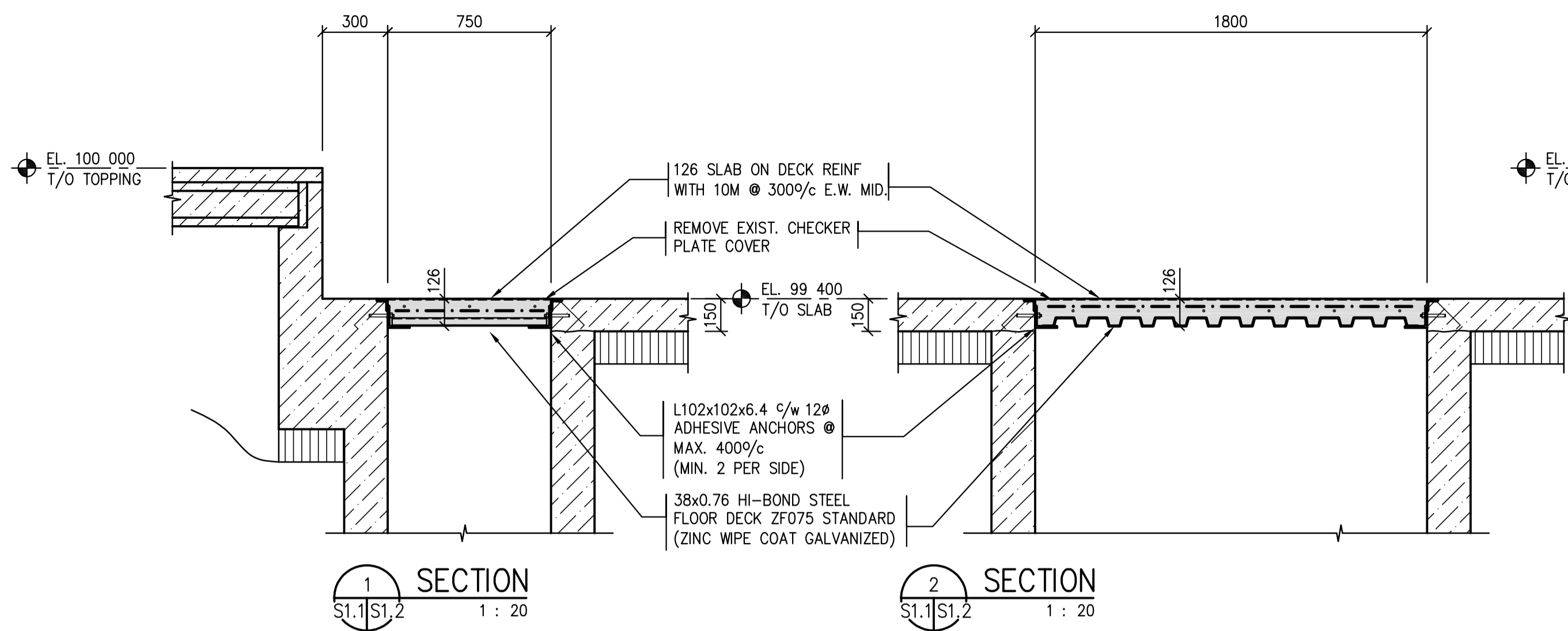
**PARTIAL MAIN FLOOR PLAN  
 PARTIAL SECOND FLOOR PLAN**

Project No./No. du projet  
**13/2015**

Sheet/Feuille  
**S1.1**

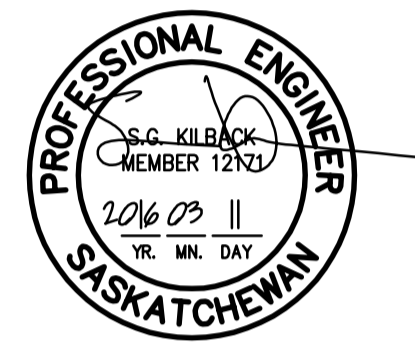
Revision no./  
 La Révision no.  
**0**





**SEPW Architecture Inc.**  
100 - 3715 Pappas Street, Regina, SK S4S 0H8 ph: (306) 569-2255  
102 - 3718 Winnet Place, Saskatoon SK S7P 0A6 ph: (306) 652-6437  
www.sepw.ca

**B B K**  
**STRUCTURAL ENGINEERS**  
BROWNLEE BEATON KREE  
3611 PASQUA STREET • REGINA • SK • S4S 6W8  
TEL: (306) 584-8833 • EMAIL: bbkregina@bbkeng.ca



Association of Professional Engineers & Geoscientists of Saskatchewan  
**CERTIFICATE OF AUTHORIZATION**  
BROWNLEE BEATON KREE (REGINA) LTD.  
NUMBER 525  
PERMISSION TO CONSULT HELD BY:  
DISCIPLINE: STRUCTURAL 12171 SIGNATURE: SKK

**DO NOT SCALE DRAWINGS**

Revision/Revision	Description/Description	Date/Date
0	ISSUED FOR TENDER	2016-03-11

Project title/Titre du projet

**INTERIOR FIT-UP  
REGINA, SASKATCHEWAN**

Approved by/Approuve par

Designed by/Concept par  
**S.K.**

Drawn by/Dessine par  
**B.R.**

Project Manager/Administrateur de Projets

Architectural and Engineering Resources Manager/  
Ressources Architecturales et de Directeur d'ingénierie

Client/client

Drawing title/Titre du dessin

**SECTIONS**

Project No./No. du projet	Sheet/Feuille	Revision no./La Révision no.
13/2015	S1.2 87 800	0

