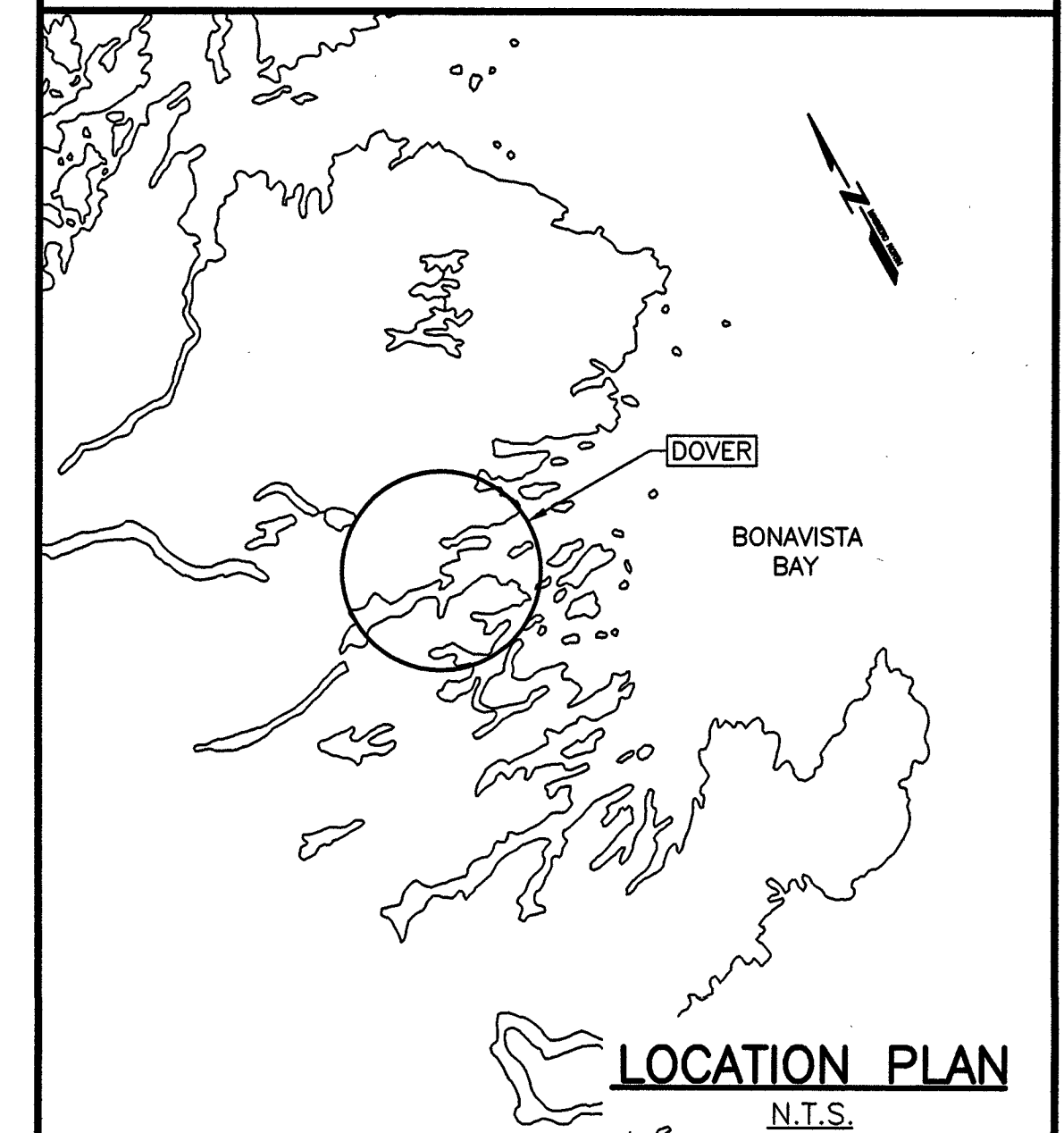
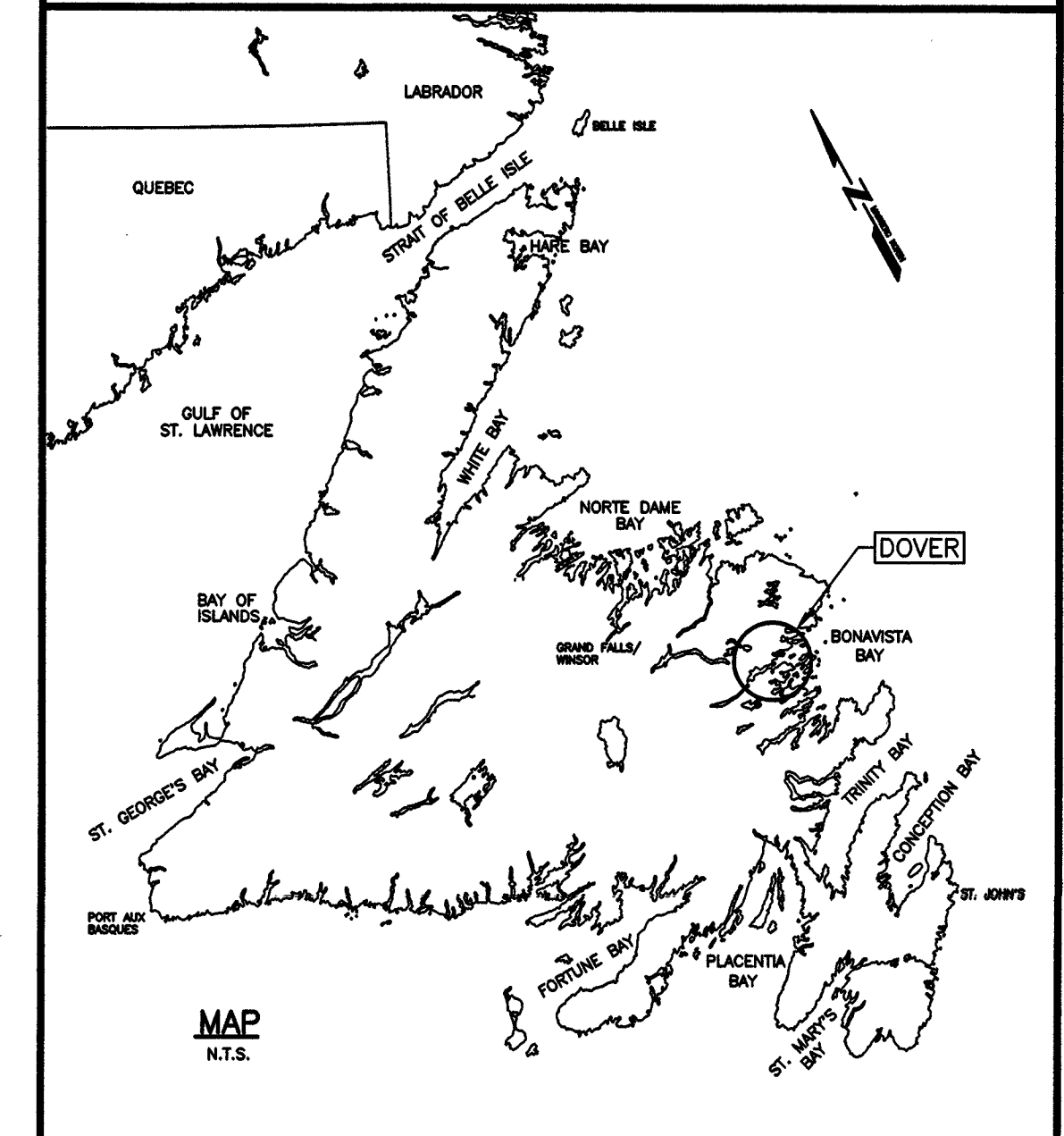




FISHERIES AND OCEANS
CANADA

WHARF CONSTRUCTION
DOVER
NEWFOUNDLAND AND LABRADOR
ATLANTIC REGION
PROJECT No. 714114

SMALL CRAFT HARBOURS



LIST OF DRAWINGS:

- C1 OF 7 EXISTING SITE PLAN
- C2 OF 7 NEW SITE PLAN
- C3 OF 7 WHARF PLAN AND CONSTRUCTION PLAN
- C4 OF 7 ELEVATIONS
- C5 OF 7 SECTIONS
- C6 OF 7 DETAILS
- C7 OF 7 BOREHOLES

N 5418300

N 5418275

N 5418250

N 5418225

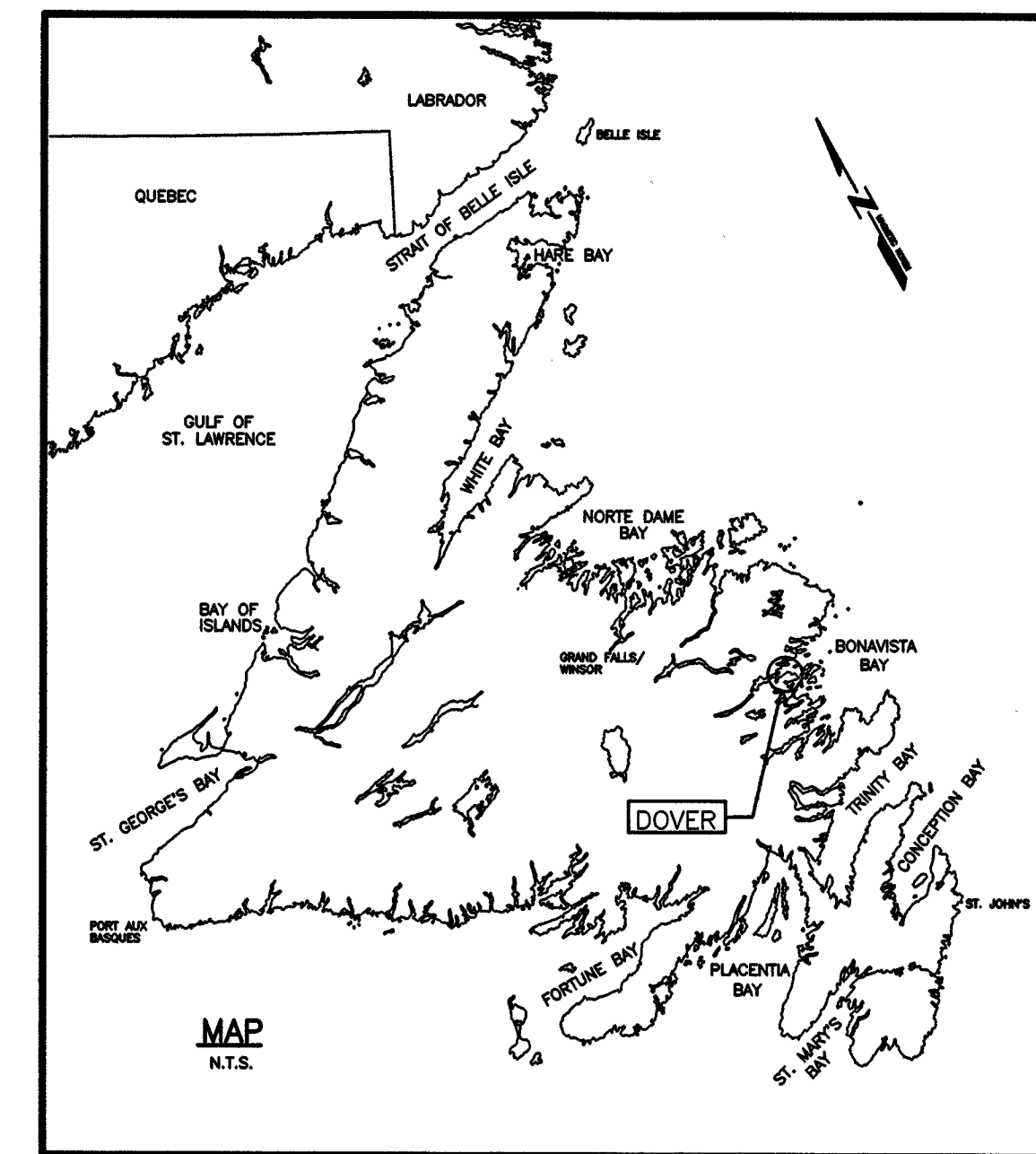
N 5418200

N 5418175

N 5418150

SURVEY LEGEND

- SYMBOLS**
- ADJACENTURE
 - ANCHOR BLOCK
 - BOLLARD
 - BORSHOLE
 - CARD POSITION MARKER
 - CATCH BASIN
 - CLEAT
 - CULVERT
 - DERISK
 - DISPOSAL
 - DREDGE CONTROL
 - ELECTRICAL OUTLET
 - FIRE HYDRANT
 - FIRST AID
 - FISH HANDLING EQUIP.
 - FISH HORN
 - FUEL PUMP
 - H PILE
 - HORIZONTAL CONTROL
 - ICE PLANT
 - INVERT PIPE
 - JIB CRANE
 - FLAG POLE
 - LADDER
 - LIFE RING
 - LIGHT STANDARD
 - MANHOLE
 - MARSH
 - MIST/TOWER
 - OBSERVATION LIGHT
 - OBSERVED SPUR BUOY
 - PIPE PILE
 - RANGE LIGHT
 - SAFETY POST
 - SEWER OUTFLOW PIPE
 - SPIN
 - TELEPHONE
 - TELEPHONE POLE
 - TIDE GAUGE/STAFF
 - TREE
 - UTILITY POLE
 - VERTICAL CONTROL
 - WATER TAP/OUTLET
 - WATER VALVE
 - WATER WELL
 - WOOD PILE
- LINE TYPE**
- ARMOUR STONE
 - CL. ROAD
 - GRASS PILE
 - EDGE ROAD / SHOULDER
 - FENCE LINE
 - FLOODING WATERWAY
 - GUARD RAIL
 - HIGH WATER MARK
 - LOW WATER MARK
 - MARSH OUTLINE
 - PROPERTY BOUNDARY
 - RANGE LIGHT EXTENSION
 - RETAINING WALL
 - RPPAP
 - TOE OF BANK
 - TREE LINE
 - UNDERGROUND CABLE



SMALL CRAFT HARBOURS



- NOTES:**
- ALL ELEVATIONS ARE IN METRES UNLESS OTHERWISE NOTED.
 - ALL DIMENSIONS ARE IN MILLIMETRES UNLESS OTHERWISE NOTED.

PROVINCE OF NEWFOUNDLAND
PERMIT HOLDER
 This Permit Allows
APN ENGINEERING INC.
 To practice Professional Engineering in Newfoundland and Labrador.
 Permit No. as issued by APREGC 2022
 which is valid for the year 2024.

STAMP

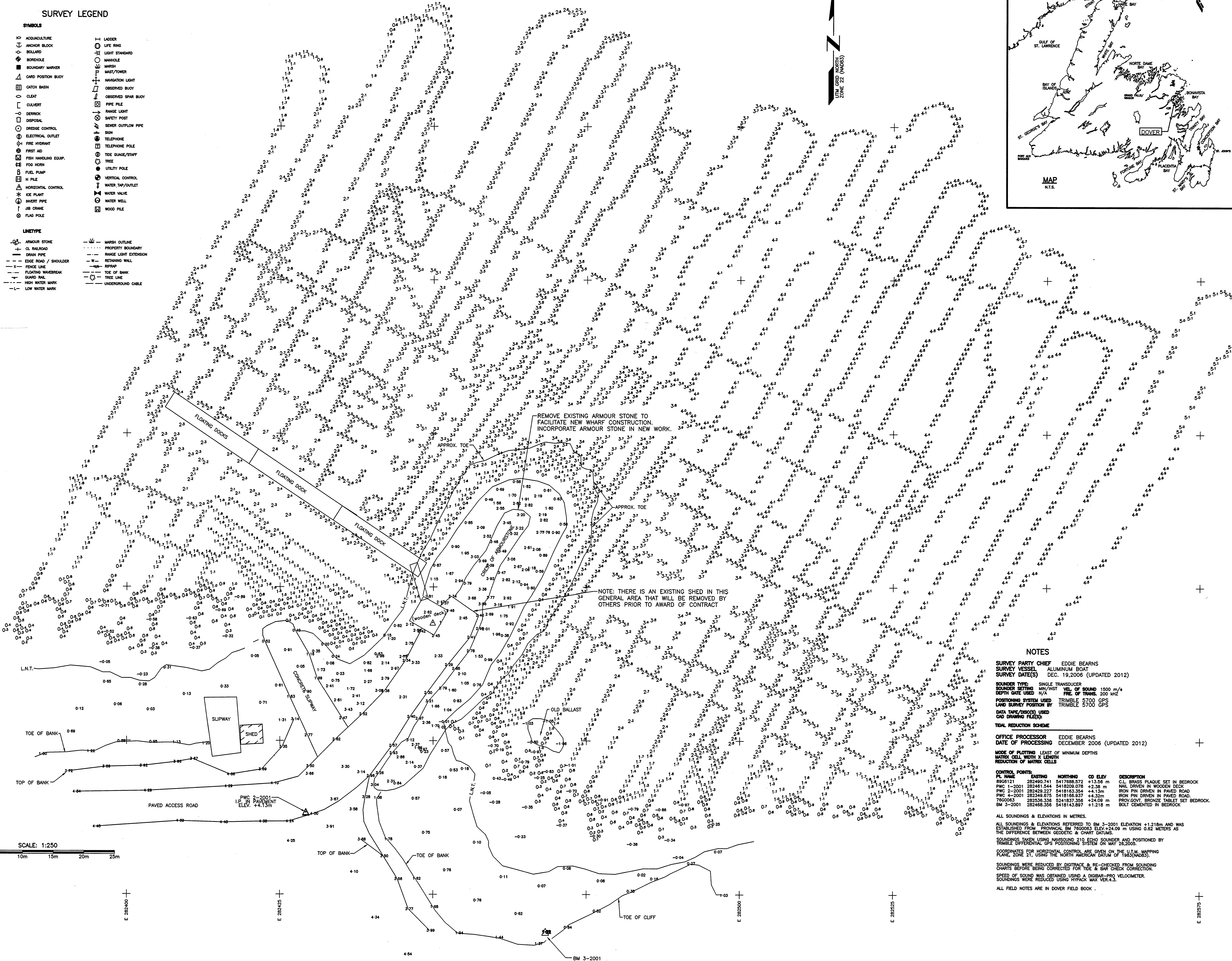
 NEIL C. HUNT
 REPRESENTATIVE
 APN ENGINEERING INC.

C	ISSUED FOR TENDER	13/01/16
B	ISSUED FOR 99% REVIEW	07/12/15
A	ISSUED FOR 66% REVIEW	24/10/15
revisions		date
project		project

WHARF CONSTRUCTION DOVER, NL

EXISTING SITE PLAN

designed	N.H.	concu
date	JANUARY 13, 2016	
drawn	P.H.	desine
date	JANUARY 13, 2016	
approved		approve
Tender	Paul Rennie	Submission
DFO Project Manager		
project number	714114	no. du projet
drawing no.	C1 OF 7	no. du dessin



NOTES

SURVEY PARTY CHIEF EDDIE BEARNS
SURVEY VESSEL ALUMINUM BOAT
SURVEY DATE(S) DEC. 19, 2006 (UPDATED 2012)

SOUNDER TYPE SINGLE TRANSDUCER
SOUNDER SETTING MIN/INST VEL OF SOUND 1500 m/s
DEPTH DATE USED N/A **FREQ. OF TRANS.** 200 KHZ
POSITIONING SYSTEM USED TRIMBLE 5700 GPS
LAND SURVEY POSITION BY TRIMBLE 5700 GPS

DATA TYPE/DEVICE USED
 OAD SWIMMING FLODS

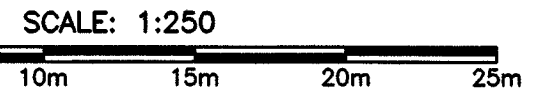
TOTAL REDUCTION SCHEME
OFFICE PROCESSOR EDDIE BEARNS
DATE OF PROCESSING DECEMBER 2006 (UPDATED 2012)

MODE OF FLOATING LEAST OF MINIMUM DEPTHS
MATRIX CELL WITH X LENGTH
REDUCTION OF MATRIX CELLS

CONTROL POINTS

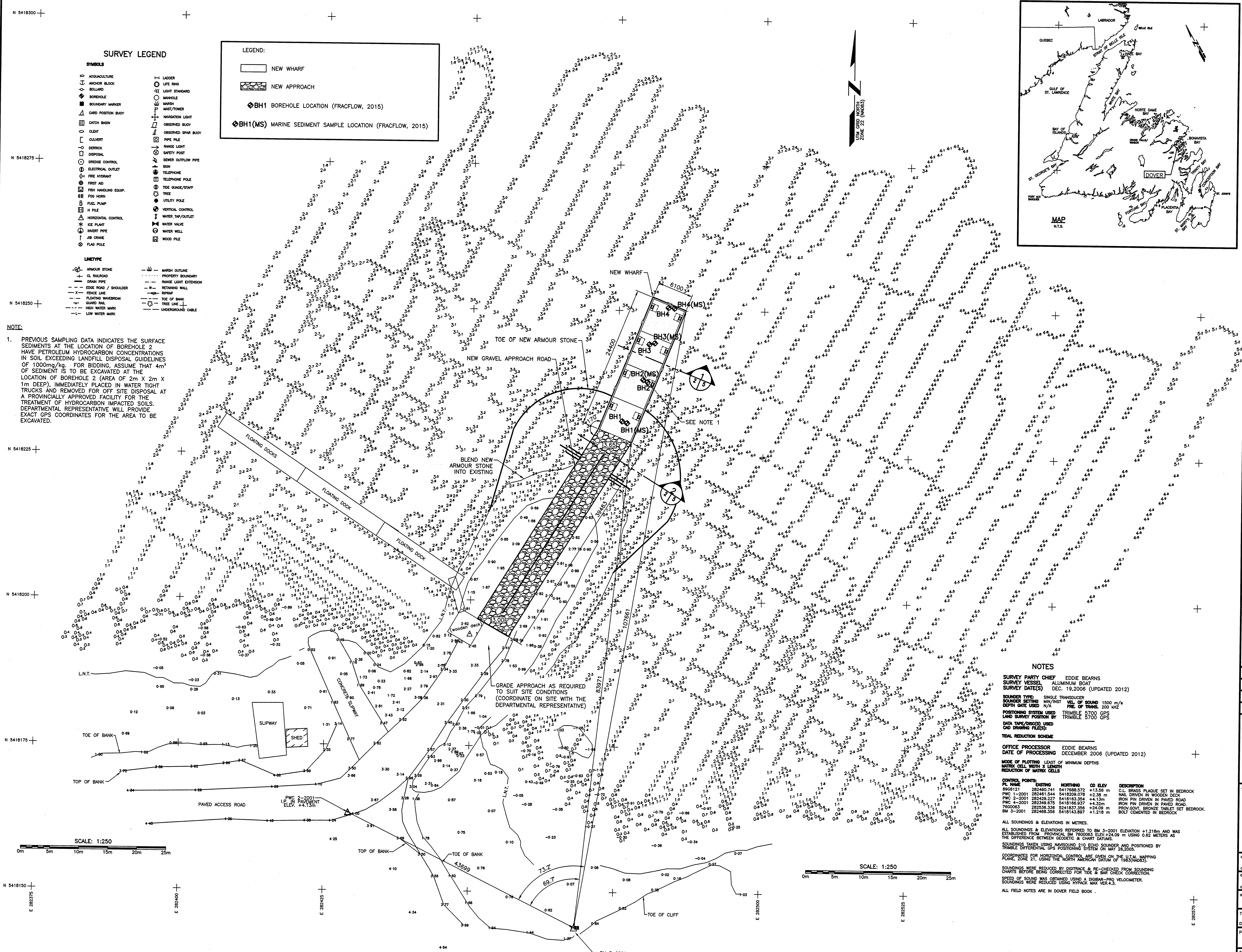
PR. NAME	EASTING	NORTHING	CG ELEV.	DESCRIPTION
8906121	282490.741	5417688.572	+13.56 m	C.L. BRASS FLAQUE SET IN BEDROCK
PWC 1-2001	282461.544	5418209.078	+2.38 m	NAIL DRIVEN IN WOODEN DECK
PWC 2-2001	282429.227	5418163.364	+4.13m	IRON PIN DRIVEN IN PAVED ROAD
PWC 4-2001	282349.675	5418166.637	+4.32m	IRON PIN DRIVEN IN PAVED ROAD
7600043	282536.336	5241837.356	+24.09 m	PROV GOVT BRONZE TABLET SET BEDROCK
BM 3-2001	282468.356	5418143.897	+1.218 m	BOLT CEMENTED IN BEDROCK

ALL SOUNDINGS & ELEVATIONS IN METRES.
 ALL SOUNDINGS & ELEVATIONS REFERRED TO BM 3-2001 ELEVATION +1.218m AND WAS ESTABLISHED FROM PROVINCIAL BM 7860003 ELEV.+24.09 m USING 0.62 METERS AS THE DIFFERENCE BETWEEN GEODETIC & CHART DATUMS.
 SOUNDINGS TAKEN USING NAVSOUND 210 ECHO SOUNDER AND POSITIONED BY TRIMBLE DIFFERENTIAL GPS POSITIONING SYSTEM ON MAY 26, 2006.
 COORDINATES FOR HORIZONTAL CONTROL ARE GIVEN ON THE ULTIM. MAPPING PLANE, ZONE 21, USING THE NORTH AMERICAN DATUM OF 1983 (NAD83).
 SOUNDINGS WERE REDUCED BY DISTANCE & RE-CHECKED FROM SOUNDING CHARTS BEFORE BEING CORRECTED FOR TIDE & BAR CHECK CORRECTION.
 SPEED OF SOUND WAS OBTAINED USING A DOBER-PRO VELOMETER.
 SOUNDINGS WERE REDUCED USING HYPACK MAX VER.4.3.
 ALL FIELD NOTES ARE IN DOVER FIELD BOOK.



SCALE: 1:250

Plot Scale: 1:250



SURVEY LEGEND

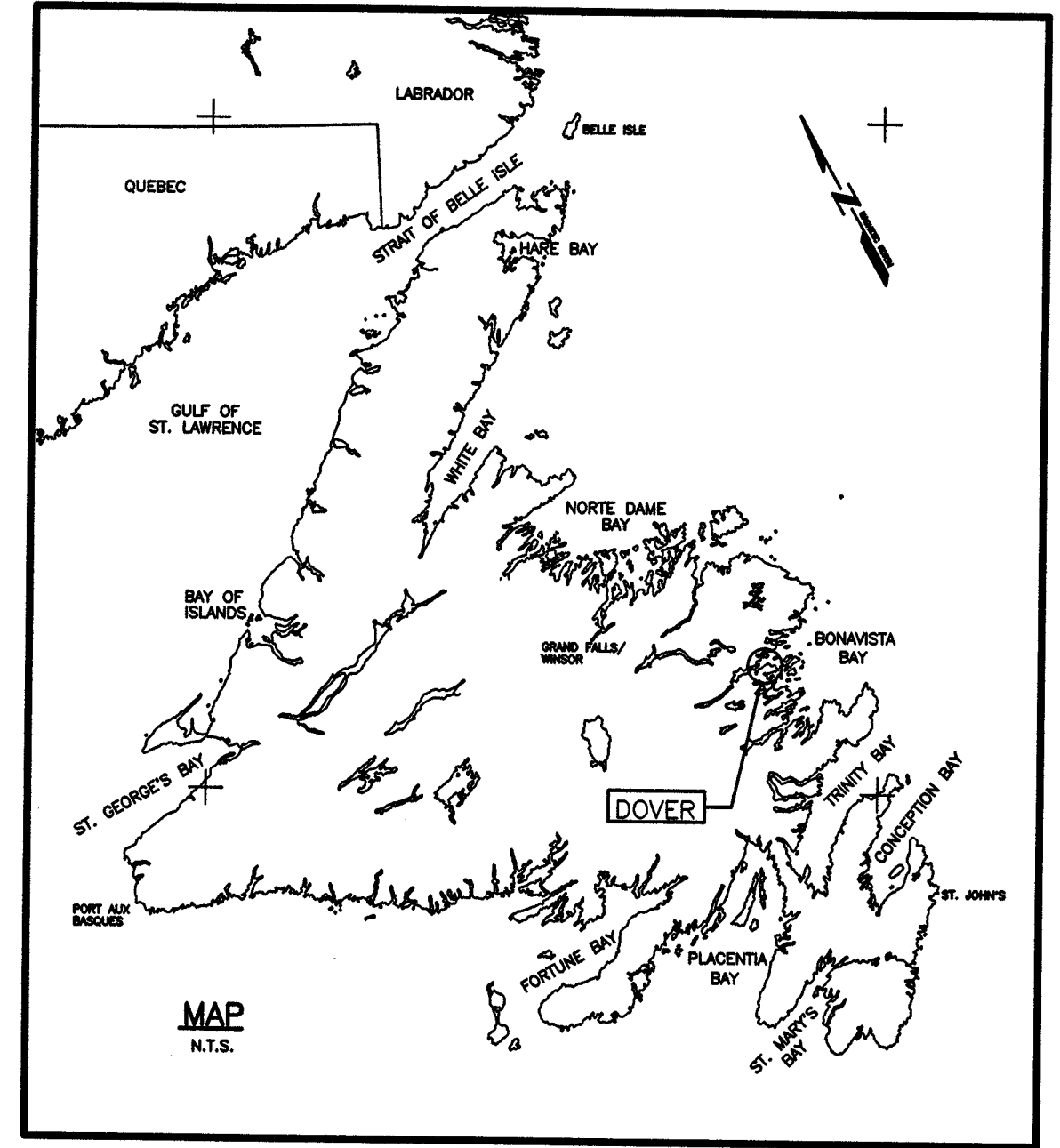
- SYMBOLS**
- ANCHOR BUREAU
 - ANCHOR BLOCK
 - BOLLARD
 - BORERHOLE
 - BOUNDARY MARKER
 - CARD POSITION BUOY
 - CATCH BASIN
 - CLEAT
 - CUVERT
 - DERRICK
 - DISPOSAL
 - DREDGE CONTROL
 - ELECTRICAL OUTLET
 - FIRE HYDRANT
 - FIRST AID
 - FISH HANDLING EQUIP.
 - FOF HOSE
 - FUEL PUMP
 - H PILE
 - HORIZONTAL CONTROL
 - ICE PLANT
 - INVERT PIPE
 - JIB CRANE
 - FLAG POLE
 - LADDER
 - LIFE RING
 - LIGHT STANDARD
 - MANHOLE
 - MARSH
 - MAST/TOWER
 - NAVIGATION LIGHT
 - OBSERVED BUOY
 - PIPE PILE
 - RANGE LIGHT
 - SAFETY POST
 - SEWER OUTFLOW PIPE
 - SHED
 - TELEPHONE
 - TELEPHONE POLE
 - TIDE GAUGE/STAFF
 - TREE
 - UTILITY POLE
 - VERTICAL CONTROL
 - WATER TAP/OUTLET
 - WATER VALVE
 - WATER WELL
 - WOOD PILE
- LINE TYPE**
- ARMOUR STONE
 - CL ROAD
 - DRAIN PIPE
 - EDGE ROAD / SHOULDER
 - FENCE LINE
 - FLOATING WHARF/BRK
 - GUARD RAIL
 - HIGH WATER MARK
 - LOW WATER MARK
 - MARSH OUTLINE
 - PROPERTY BOUNDARY
 - RANGE LIGHT EXTENSION
 - RETAINING WALL
 - RISE
 - TOE OF BANK
 - TREE LINE
 - UNDERGROUND CABLE

LEGEND:

- NEW WHARF
- NEW APPROACH
- BH1 BOREHOLE LOCATION (FRACFLOW, 2015)
- BH1(MS) MARINE SEDIMENT SAMPLE LOCATION (FRACFLOW, 2015)

NOTE:

1. PREVIOUS SAMPLING DATA INDICATES THE SURFACE SEDIMENTS AT THE LOCATION OF BOREHOLE 2 HAVE PETROLEUM HYDROCARBON CONCENTRATIONS IN SOIL EXCEEDING LANDFILL DISPOSAL GUIDELINES OF 1000mg/kg. FOR BIDDING, ASSUME THAT 4m³ OF SEDIMENT IS TO BE EXCAVATED AT THE LOCATION OF BOREHOLE 2 (AREA OF 2m x 2m X 1m DEEP), IMMEDIATELY PLACED IN WATER TIGHT TRUCKS AND REMOVED FOR OFF SITE DISPOSAL AT A PROVINCIALLY APPROVED FACILITY FOR THE TREATMENT OF HYDROCARBON IMPACTED SOILS. DEPARTMENTAL REPRESENTATIVE WILL PROVIDE EXACT GPS COORDINATES FOR THE AREA TO BE EXCAVATED.



Fisheries and Oceans Canada / Pêches et Océans Canada

SMALL CRAFT HARBOURS

NOTES:

- ALL ELEVATIONS ARE IN METRES UNLESS OTHERWISE NOTED.
- ALL DIMENSIONS ARE IN MILLIMETRES UNLESS OTHERWISE NOTED.

PROVINCE OF NEWFOUNDLAND PERMIT HOLDER
This Permit Allows
APN ENGINEERING INC.

To practice Professional Engineering in Newfoundland and Labrador, Permit No. as issued by APENL F0292, which is valid for the year 2016.

PROFESSIONAL ENGINEER
NEIL C. HUNT
NEWFOUNDLAND & LABRADOR

C	ISSUED FOR TENDER	13/01/16
B	ISSUED FOR 95% REVIEW	07/12/15
A	ISSUED FOR 65% REVIEW	24/10/15

revisions: _____ date: _____
project: _____ project: _____

WHARF CONSTRUCTION
DOVER, NL

NEW SITE PLAN

designed N.H. concu
date JANUARY 13, 2016
drawn P.H. desaine
date JANUARY 13, 2016
approved _____ approve
Tender Paul Curran Submission
DFO Project Manager
project number 714114 no. du projet
drawing no. C2 OF 7 no. du dessin

NOTES

SURVEY PARTY CHIEF EDDIE BEARNS
SURVEY VESSEL ALUMINUM BOAT
SURVEY DATE(S) DEC. 19, 2008 (UPDATED 2012)

SOUNDER TYPE SINGLE TRANSDUCER
SOUNDER SETTING MIN/INST VEL. OF SOUND 1500 m/s
DEPTH RATE USED N/A **PRE. OF TRANS.** 200 HZ
POSITIONING SYSTEM USED TRIMBLE 5700 GPS
LAND SURVEY POSITION BY TRIMBLE 5700 GPS
DATA TAKE/PROCESS USED
CAD DRAWING FILE(S)

TIDAL REDUCTION SCHEME

OFFICE PROCESSOR EDDIE BEARNS
DATE OF PROCESSING DECEMBER 2008 (UPDATED 2012)

MODE OF FLOATING LEAST OF MINIMUM DEPTHS
MATRIX CELL WIDTH X LENGTH
REDUCTION OF MATRIX CELLS

CONTROL POINTS:

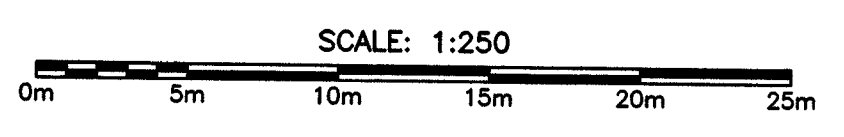
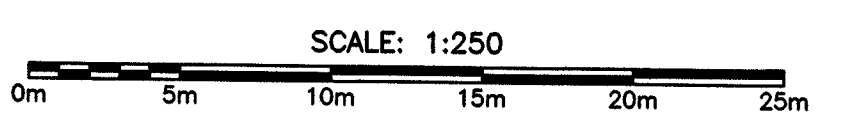
PL. NAME	EASTING	NORTHING	CD ELEV.	DESCRIPTION
8906121	282490.741	5417688.572	+13.56 m	C.L. BRASS PLAQUE SET IN BEDROCK
PWC 1-2001	282481.544	5418209.078	+2.38 m	NAIL DRIVEN IN WOODEN DECK
PWC 2-2001	282429.227	5418163.354	+4.13m	IRON PIN DRIVEN IN PAVED ROAD
PWC 4-2001	282349.675	5418166.937	+4.32m	IRON PIN DRIVEN IN PAVED ROAD.
7500063	282538.336	541837.356	+24.09 m	PROVIGYOT. BRONZE TABLET SET BEDROCK.
BM 3-2001	282468.356	5418143.897	+1.218 m	BOLT CEMENTED IN BEDROCK.

ALL SOUNDINGS & ELEVATIONS IN METRES.
ALL SOUNDINGS & ELEVATIONS REFERRED TO BM 3-2001 ELEVATION +1.218m AND WAS ESTABLISHED FROM PROVINCIAL BM 7600063 ELEV.+24.09 m USING 0.62 METERS AS THE DIFFERENCE BETWEEN GEODETIC & CHART DATUMS.

SOUNDINGS TAKEN USING NAVSOUND 210 ECHO SOUNDER AND POSITIONED BY TRIMBLE DIFFERENTIAL GPS POSITIONING SYSTEM ON MAY 26, 2005.

COORDINATES FOR HORIZONTAL CONTROL POINTS ON THE SURVEY MAPPING CHARTS BEING CORRECTED FOR TIDE & BAR CHECK CORRECTION. SPEED OF SOUND WAS OBTAINED USING A BUBBLE-TUBE VELOCIMETER. SOUNDINGS WERE REDUCED USING HYPACK MAX VER.4.3.

ALL FIELD NOTES ARE IN DOVER FIELD BOOK.

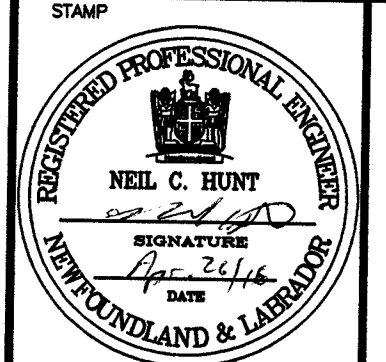


SMALL CRAFT HARBOURS



NOTES:
 1. ALL ELEVATIONS ARE IN METRES UNLESS OTHERWISE NOTED.
 2. ALL DIMENSIONS ARE IN MILLIMETRES UNLESS OTHERWISE NOTED.

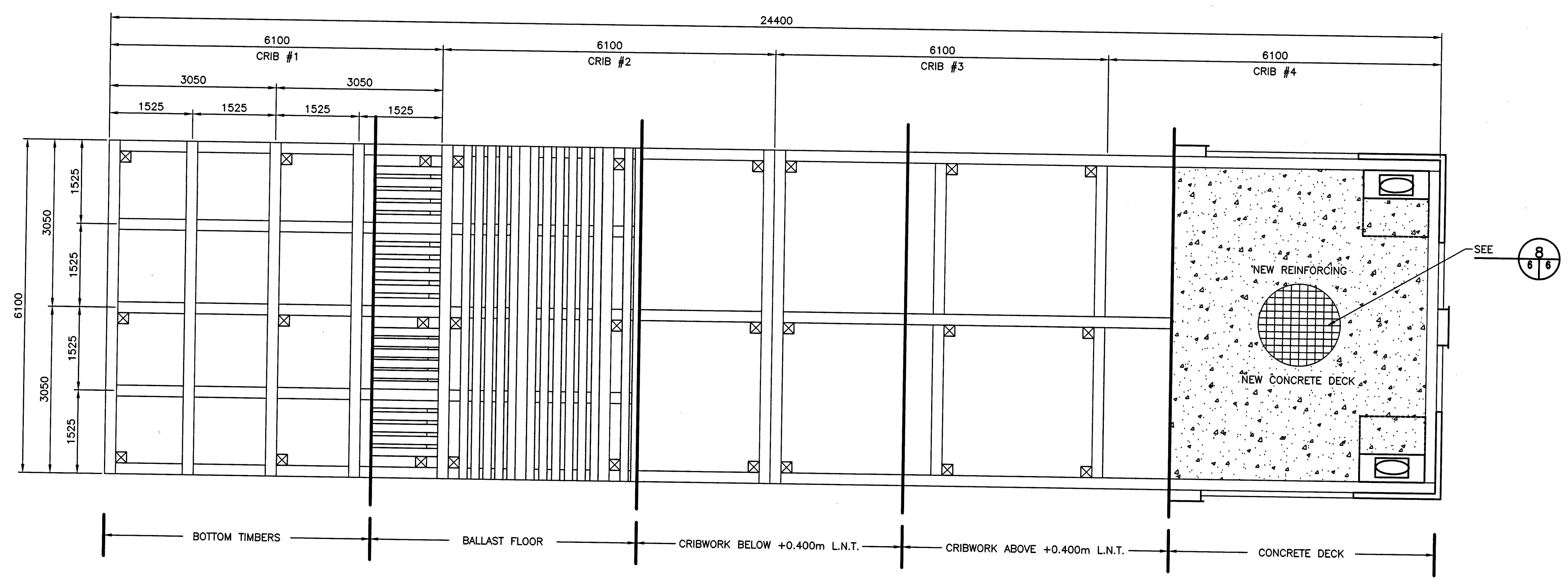
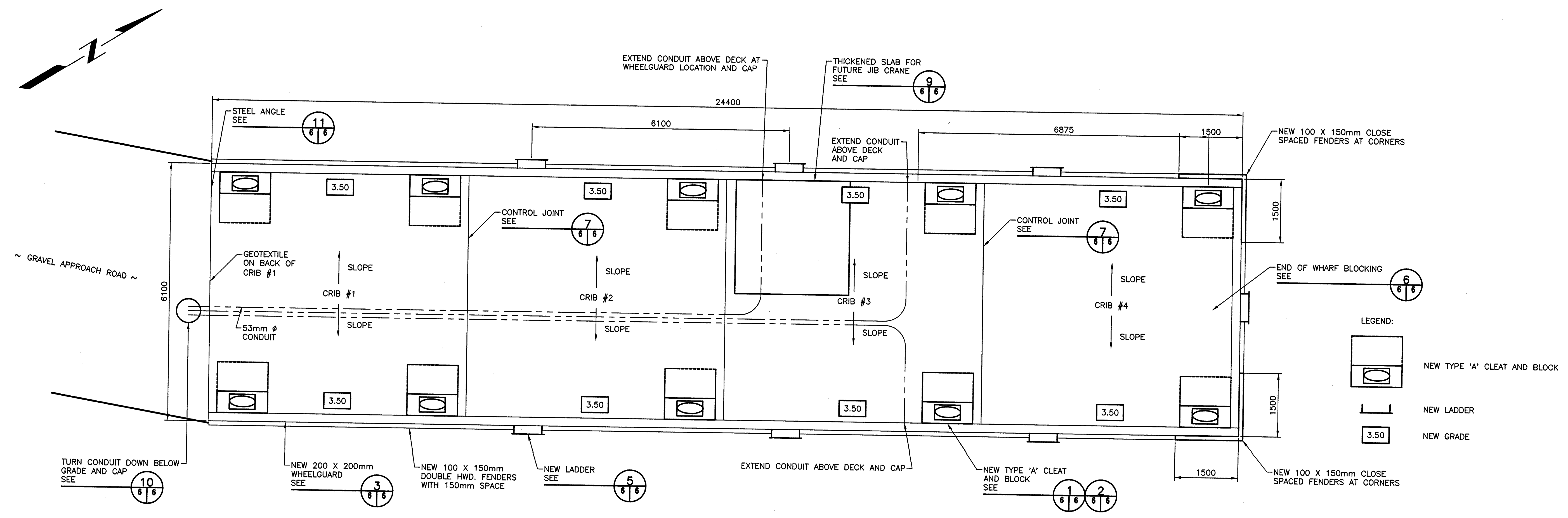
PROVINCE OF NEWFOUNDLAND
 PERMIT HOLDER
 This Permit Allows
 APN ENGINEERING INC.
 To practice Professional Engineering in Newfoundland and Labrador.
 Permit No. as issued by APBROU F0282 which is valid for the year 2018.



C	ISSUED FOR TENDER	13/01/16
B	ISSUED FOR 99% REVIEW	07/12/15
A	ISSUED FOR 66% REVIEW	24/10/15
revisions		date
project		project

WHARF CONSTRUCTION
DOVER, NL

designed N.H.	concu
date JANUARY 13, 2016	
drawn P.H.	desine
date JANUARY 13, 2016	
approved	approve
Tender Paul Curran	Submission
DPO Project Manager	
project number 714114	no. du projet
drawing no. C3 OF 7	no. du dessin



SMALL CRAFT HARBOURS



NOTES:

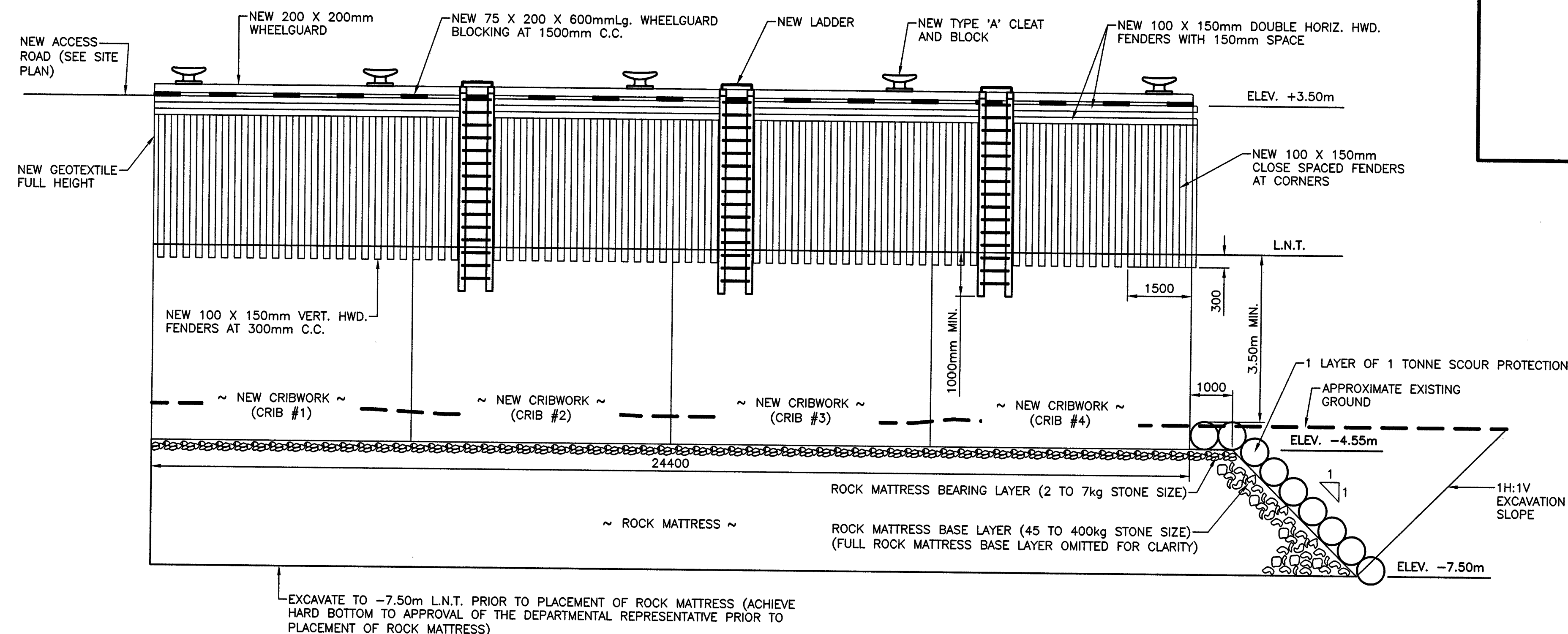
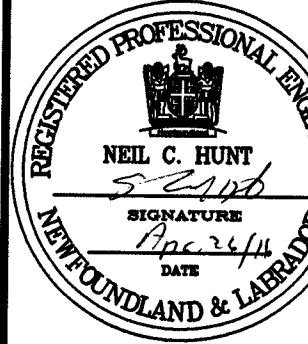
1. ALL ELEVATIONS ARE IN METRES UNLESS OTHERWISE NOTED.
2. ALL DIMENSIONS ARE IN MILLIMETRES UNLESS OTHERWISE NOTED.

PROVINCE OF NEWFOUNDLAND

PERMIT HOLDER
This Permit Allows
APN ENGINEERING INC.

To practice Professional Engineering in Newfoundland and Labrador, Permit No. as issued by AP2021_P0292, which is valid for the year 2018.

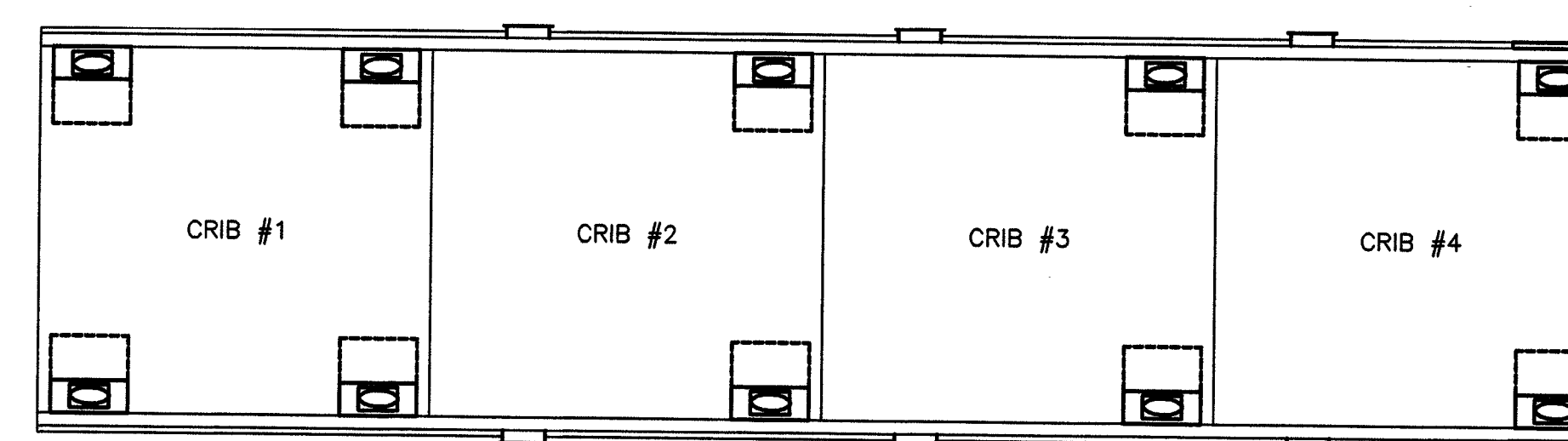
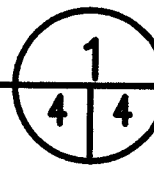
STAMP



EXCAVATE TO -7.50m L.N.T. PRIOR TO PLACEMENT OF ROCK MATTRESS (ACHIEVE HARD BOTTOM TO APPROVAL OF THE DEPARTMENTAL REPRESENTATIVE PRIOR TO PLACEMENT OF ROCK MATTRESS)

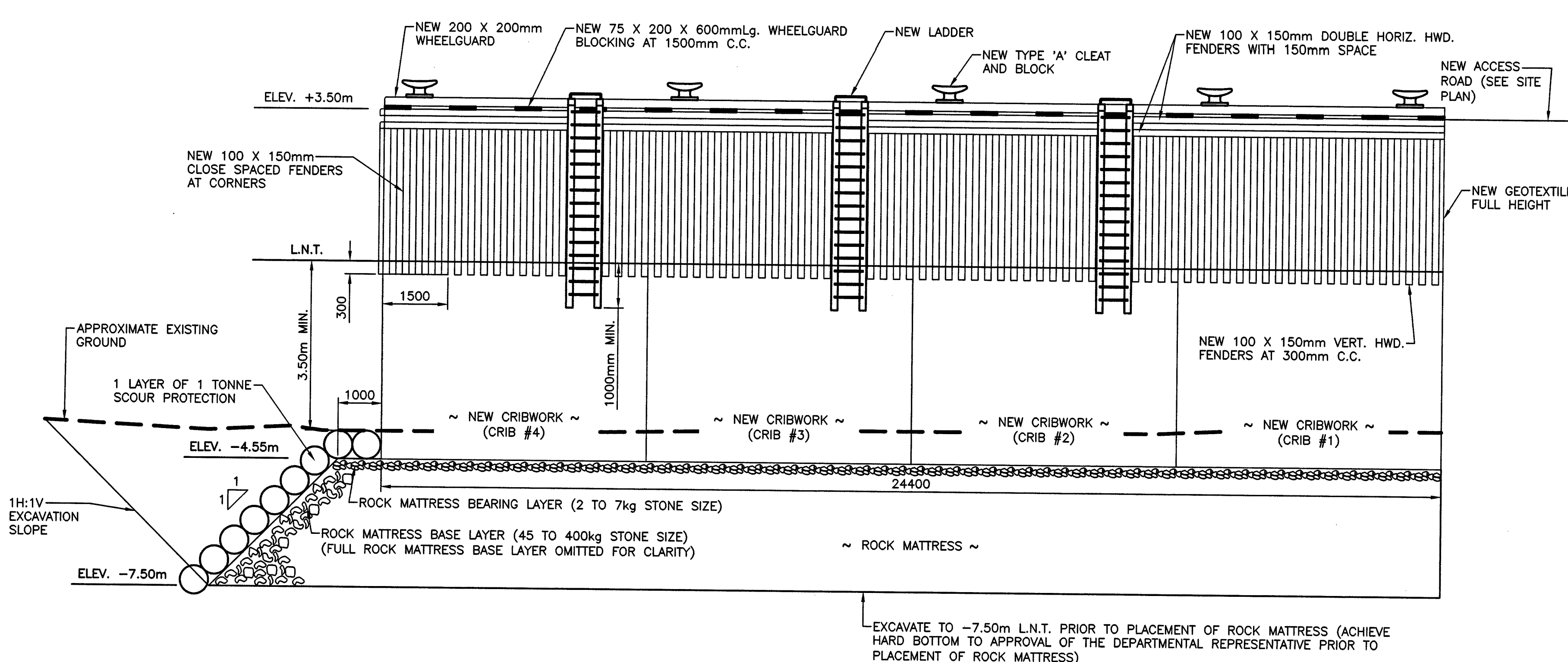
ELEVATION

SCALE : 1:100



KEY PLAN
SCALE: 1:100

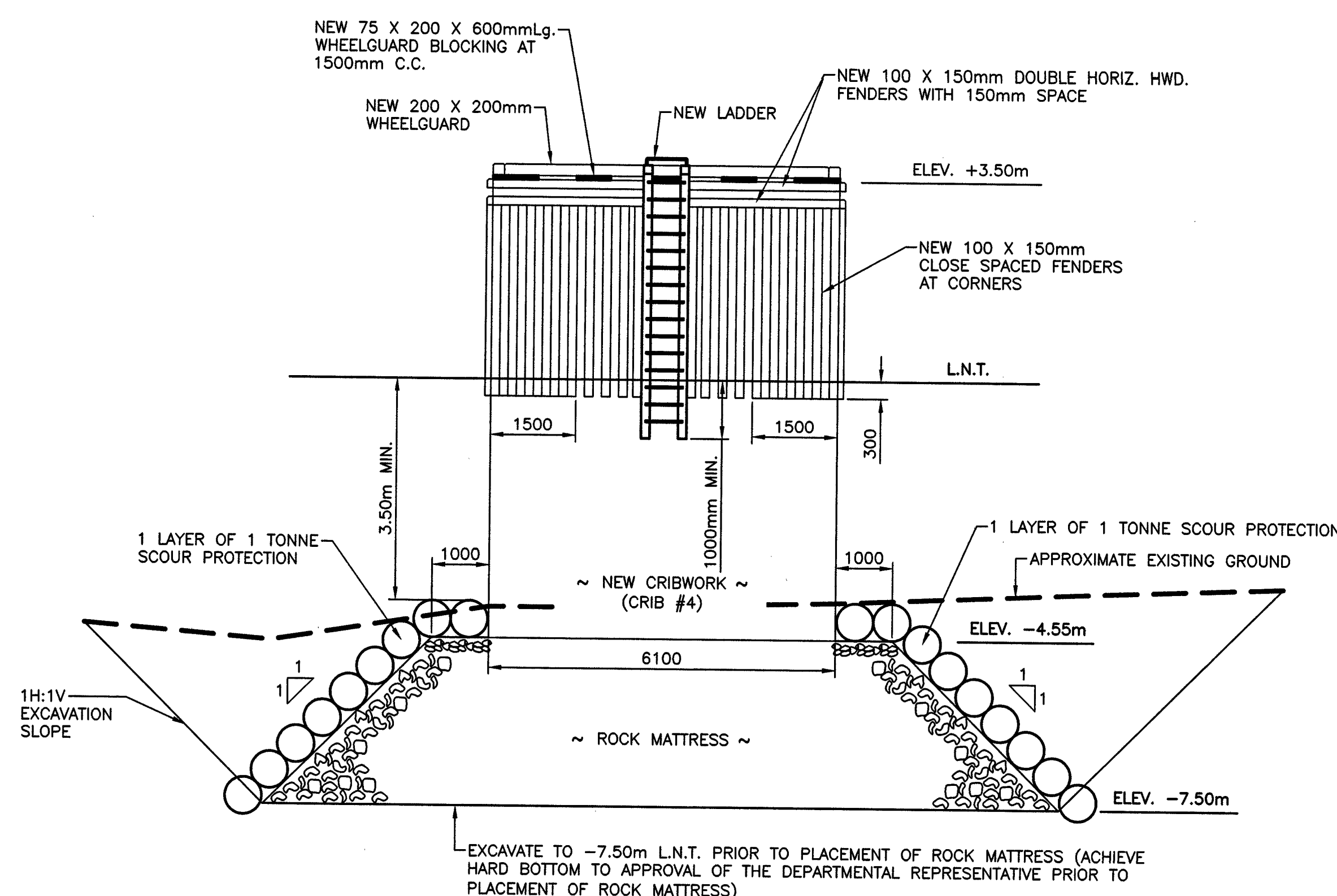
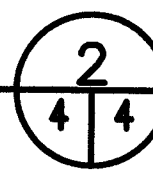
THE CONTRACTOR SHALL BE RESPONSIBLE TO PLACE ROCK MATTRESS ON HARD BOTTOM, AND SHALL THOROUGHLY PROBE THE AREA IN A MINIMUM 1 METRE BY 1 METRE (1m X 1m) GRID TO CONFIRM THAT ALL LOOSE AND SOFT UNSOUND SOILS HAVE BEEN REMOVED TO HARD BOTTOM. ALL PROBING ACTIVITIES TO BE COMPLETED BY DIVERS USING A 15mm DIAMETER X 2000mm LONG STEEL ROD WITH POINTED END. SAID ROD TO BE DRIVEN WITH A 2.5kg HAMMER. UNLESS OTHERWISE DIRECTED BY DEPARTMENTAL REPRESENTATIVE, HARD BOTTOM IS TO BE CONSIDERED TO BE ACHIEVED WHEN THE PROBE CANNOT PENETRATE MORE THAN 600mm INTO THE UNDERLYING SOILS, WITH THE FOOTPRINT OF A GIVEN CRIB AREA. ALL WORK TO BE OVERSEEN BY THE ONSITE INSPECTOR.



EXCAVATE TO -7.50m L.N.T. PRIOR TO PLACEMENT OF ROCK MATTRESS (ACHIEVE HARD BOTTOM TO APPROVAL OF THE DEPARTMENTAL REPRESENTATIVE PRIOR TO PLACEMENT OF ROCK MATTRESS)

ELEVATION

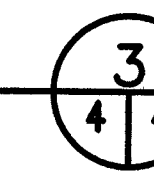
SCALE : 1:100



EXCAVATE TO -7.50m L.N.T. PRIOR TO PLACEMENT OF ROCK MATTRESS (ACHIEVE HARD BOTTOM TO APPROVAL OF THE DEPARTMENTAL REPRESENTATIVE PRIOR TO PLACEMENT OF ROCK MATTRESS)

ELEVATION

SCALE : 1:100



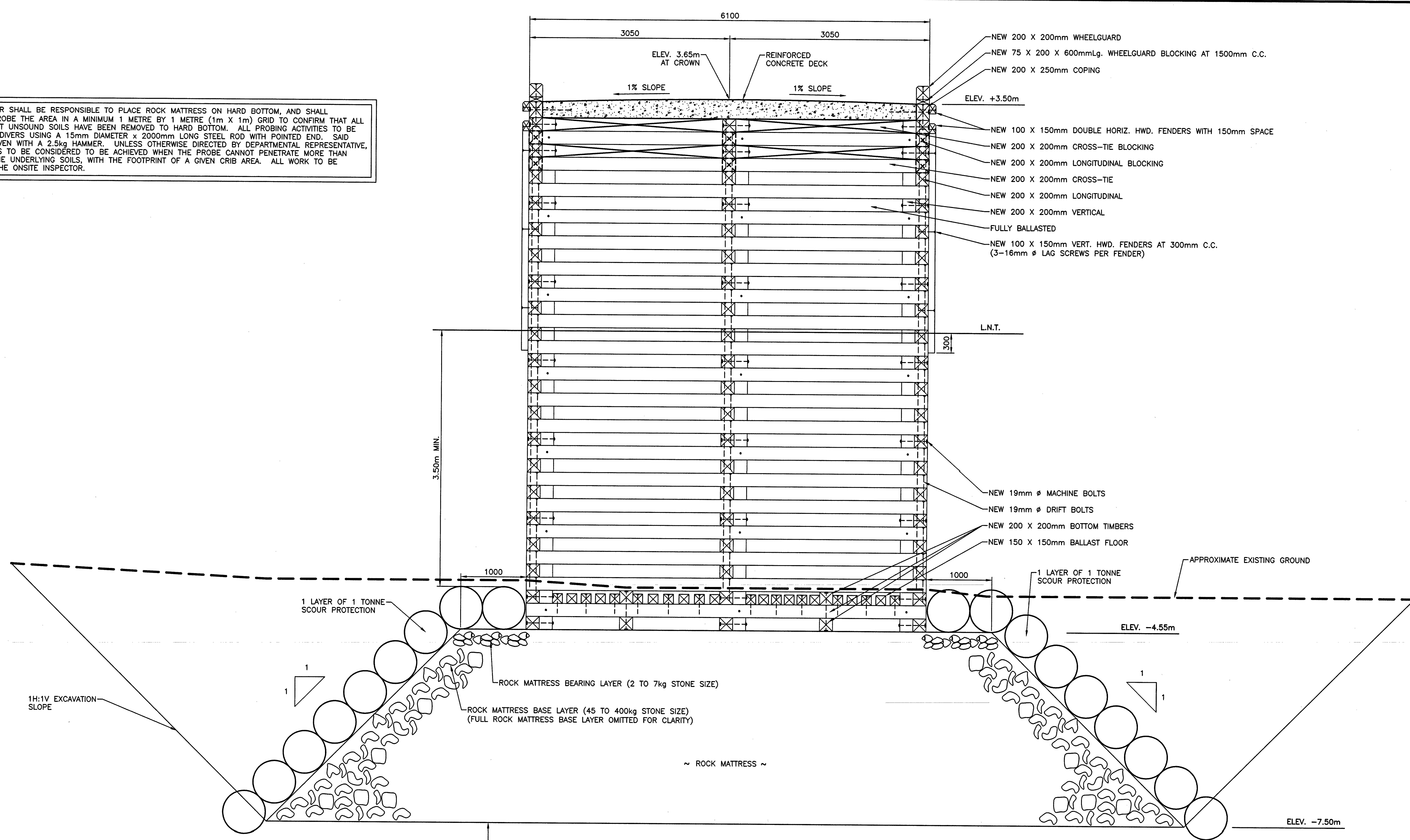
C	ISSUED FOR TENDER	13/01/16
B	ISSUED FOR 99% REVIEW	07/12/15
A	ISSUED FOR 66% REVIEW	24/10/15
revisions		date
project		project

WHARF CONSTRUCTION
DOVER, NL

ELEVATIONS

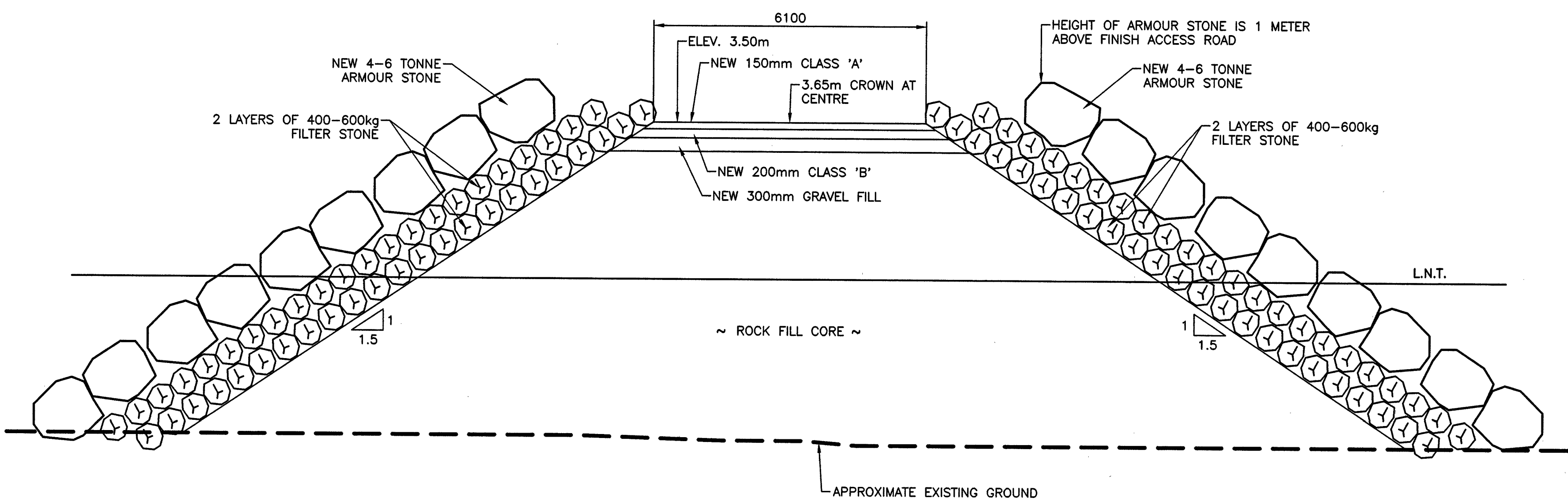
designed N.H.	concu
date JANUARY 13, 2016	
drawn P.H.	desine
date JANUARY 13, 2016	
approved	approve
Tender Paul Hunt	Submission
DFD Project Manager	
project number 714114	no. du projet
drawing no. C4 OF 7	no. du dessin

THE CONTRACTOR SHALL BE RESPONSIBLE TO PLACE ROCK MATTRESS ON HARD BOTTOM, AND SHALL THOROUGHLY PROBE THE AREA IN A MINIMUM 1 METRE BY 1 METRE (1m X 1m) GRID TO CONFIRM THAT ALL LOOSE AND SOFT UNSOUND SOILS HAVE BEEN REMOVED TO HARD BOTTOM. ALL PROBING ACTIVITIES TO BE COMPLETED BY DIVERS USING A 15mm DIAMETER x 2000mm LONG STEEL ROD WITH POINTED END. SAID ROD TO BE DRIVEN WITH A 2.5kg HAMMER. UNLESS OTHERWISE DIRECTED BY DEPARTMENTAL REPRESENTATIVE, HARD BOTTOM IS TO BE CONSIDERED TO BE ACHIEVED WHEN THE PROBE CANNOT PENETRATE MORE THAN 600mm INTO THE UNDERLYING SOILS, WITH THE FOOTPRINT OF A GIVEN CRIB AREA. ALL WORK TO BE OVERSEEN BY THE ONSITE INSPECTOR.



EXCAVATE TO -7.50m L.N.T. PRIOR TO PLACEMENT OF ROCK MATTRESS (ACHIEVE HARD BOTTOM TO APPROVAL OF THE DEPARTMENTAL REPRESENTATIVE PRIOR TO PLACEMENT OF ROCK MATTRESS)

CRIB SECTION
SCALE : 1:30



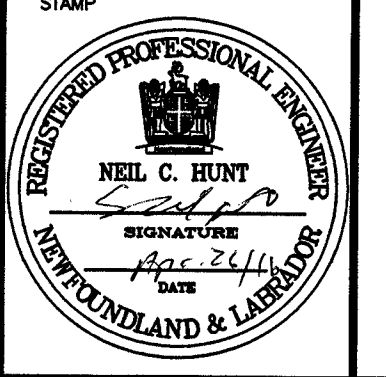
SECTION THROUGH APPROACH ROAD
SCALE : 1:75

SMALL CRAFT HARBOURS



NOTES:
1. ALL ELEVATIONS ARE IN METRES UNLESS OTHERWISE NOTED.
2. ALL DIMENSIONS ARE IN MILLIMETRES UNLESS OTHERWISE NOTED.

PROVINCE OF NEWFOUNDLAND
PERMIT HOLDER
This Permit Allows
APN ENGINEERING INC.
To practice Professional Engineering in Newfoundland and Labrador.
Permit No. as issued by APBONL #0292 which is valid for the year 2016.



C	ISSUED FOR TENDER	13/01/16
B	ISSUED FOR 90% REVIEW	07/12/15
A	ISSUED FOR 60% REVIEW	24/10/15
revisions		date
project		project

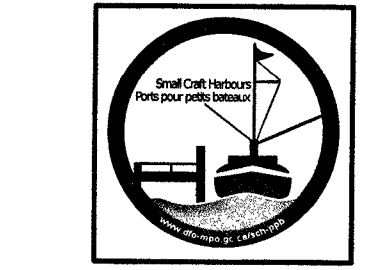
WHARF CONSTRUCTION
DOVER, NL

SECTIONS

designed N.H. conou
date JANUARY 13, 2016
drawn P.H. dessine
date JANUARY 13, 2016
approved

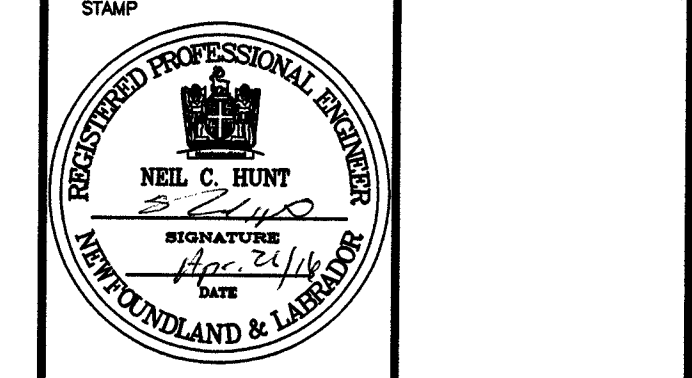
Tender Paul Curran Soumission
DFO Project Manager
project number 714114 no. du projet
drawing no. C5 OF 7 no. du dessin

SMALL CRAFT HARBOURS



- NOTES:
1. ALL ELEVATIONS ARE IN METRES UNLESS OTHERWISE NOTED.
 2. ALL DIMENSIONS ARE IN MILLIMETRES UNLESS OTHERWISE NOTED.

PROVINCE OF NEWFOUNDLAND
 PERMIT HOLDER
 This Permit Allows
 APN ENGINEERING INC.
 To practice Professional Engineering
 in Newfoundland and Labrador.
 Permit No. as issued by APEGNL F0282,
 which is valid for the year 2016.



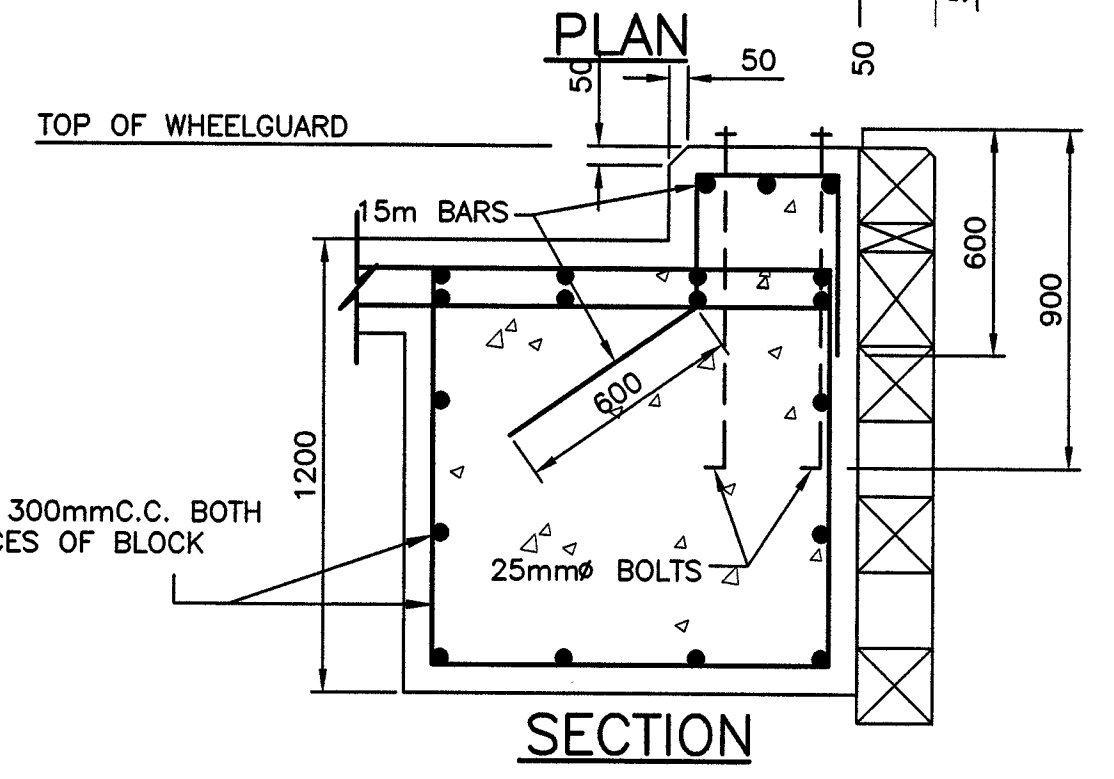
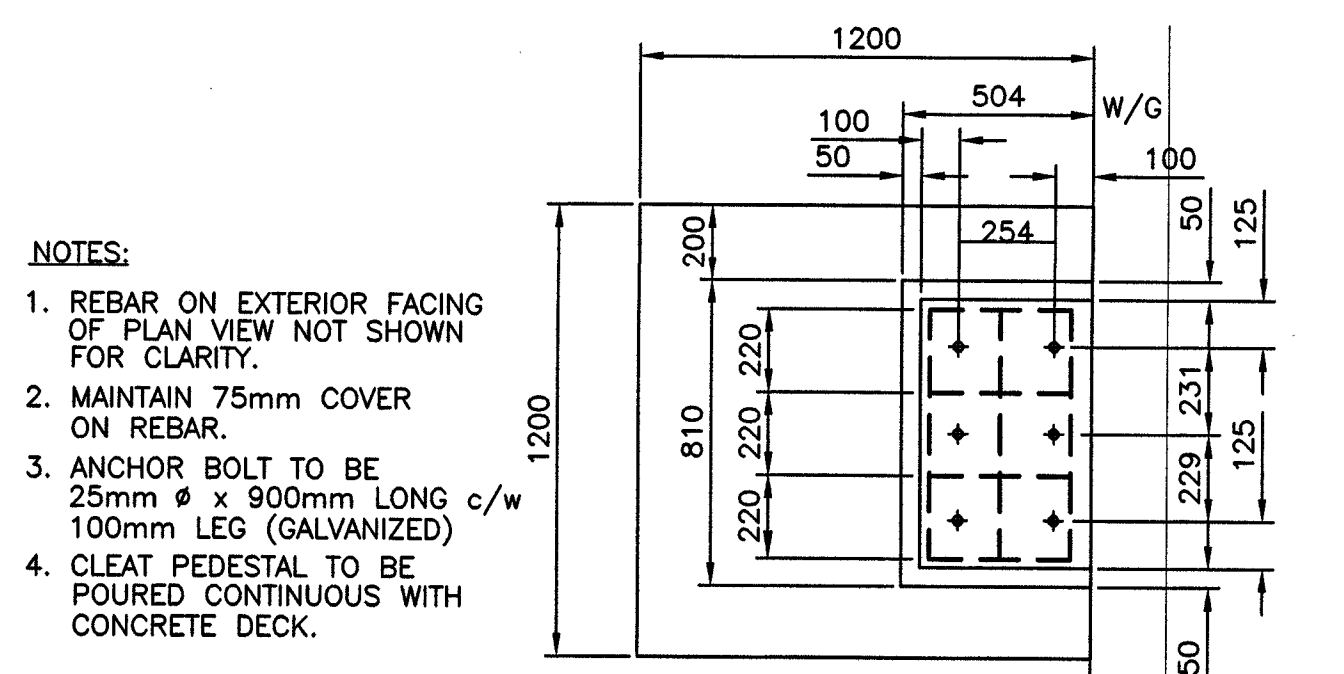
revision	date	description
C	13/01/16	ISSUED FOR TENDER
B	07/12/15	ISSUED FOR 90% REVIEW
A	24/10/15	ISSUED FOR 60% REVIEW

project
WHARF CONSTRUCTION
 DOVER, NL

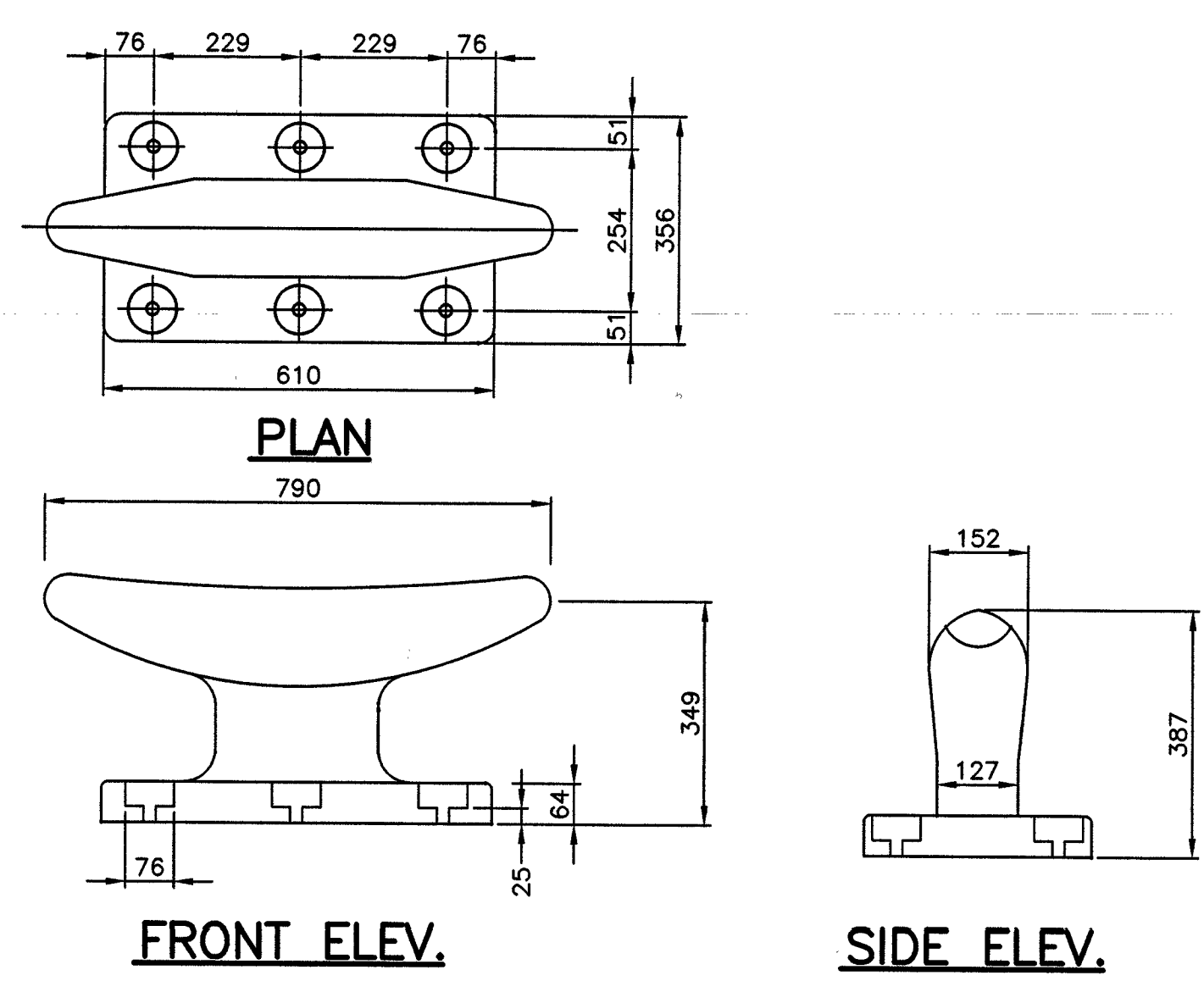
drawing
DETAILS

designed N.H.
 date JANUARY 13, 2016
 drawn P.H.
 date JANUARY 13, 2016

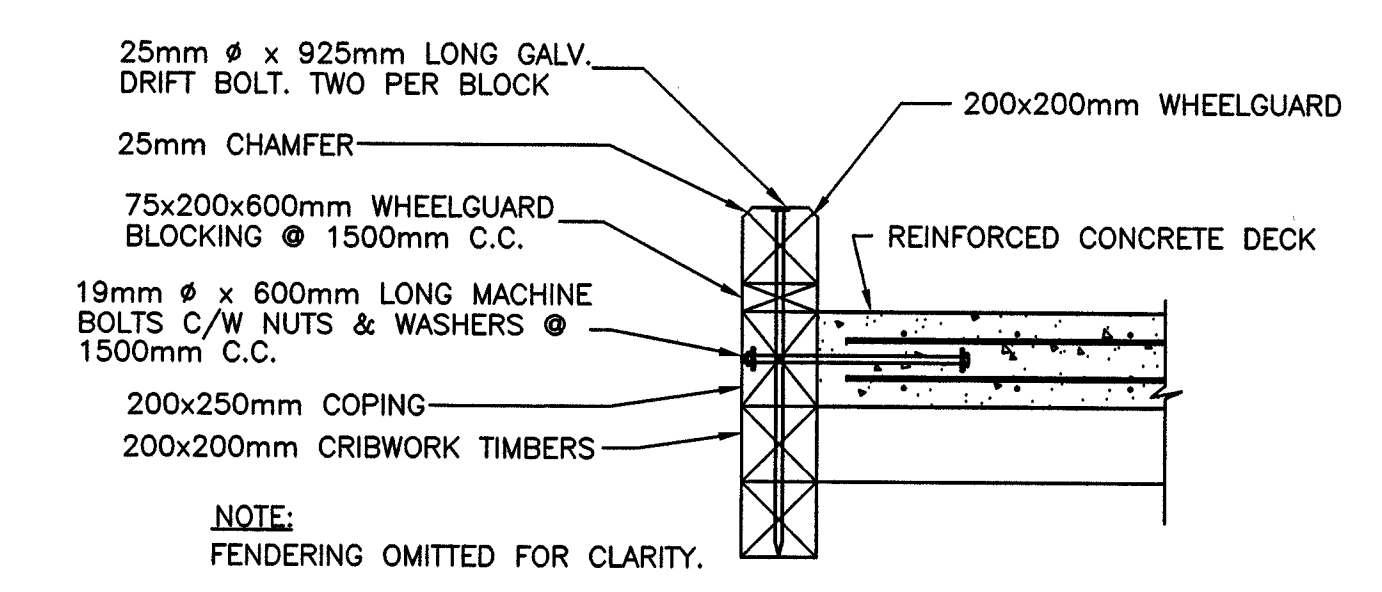
approved
 Tender Paul Curran
 DFO Project Manager
 project number 714114
 no. du projet
 drawing no. C6 OF 7
 no. du dessin



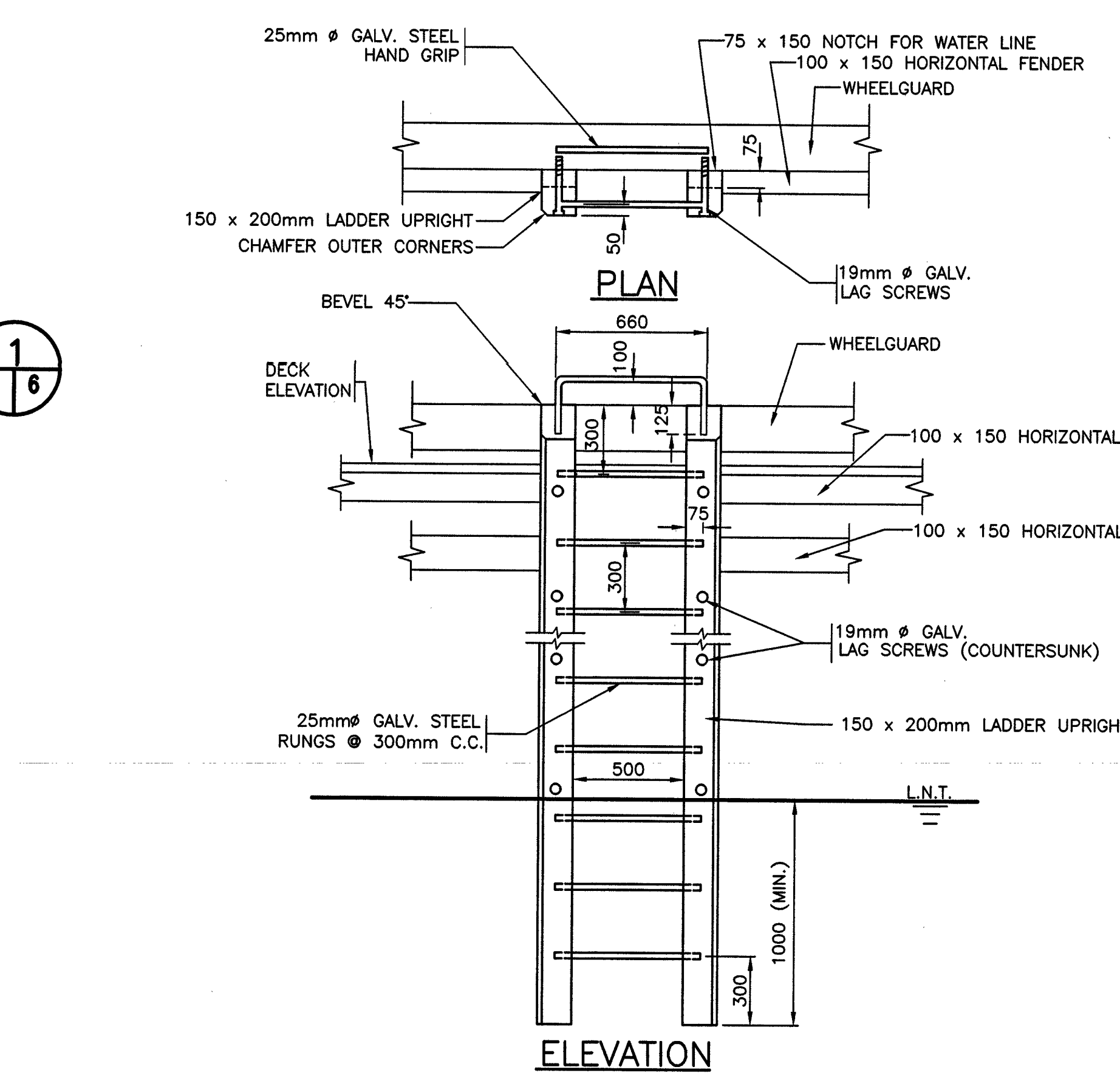
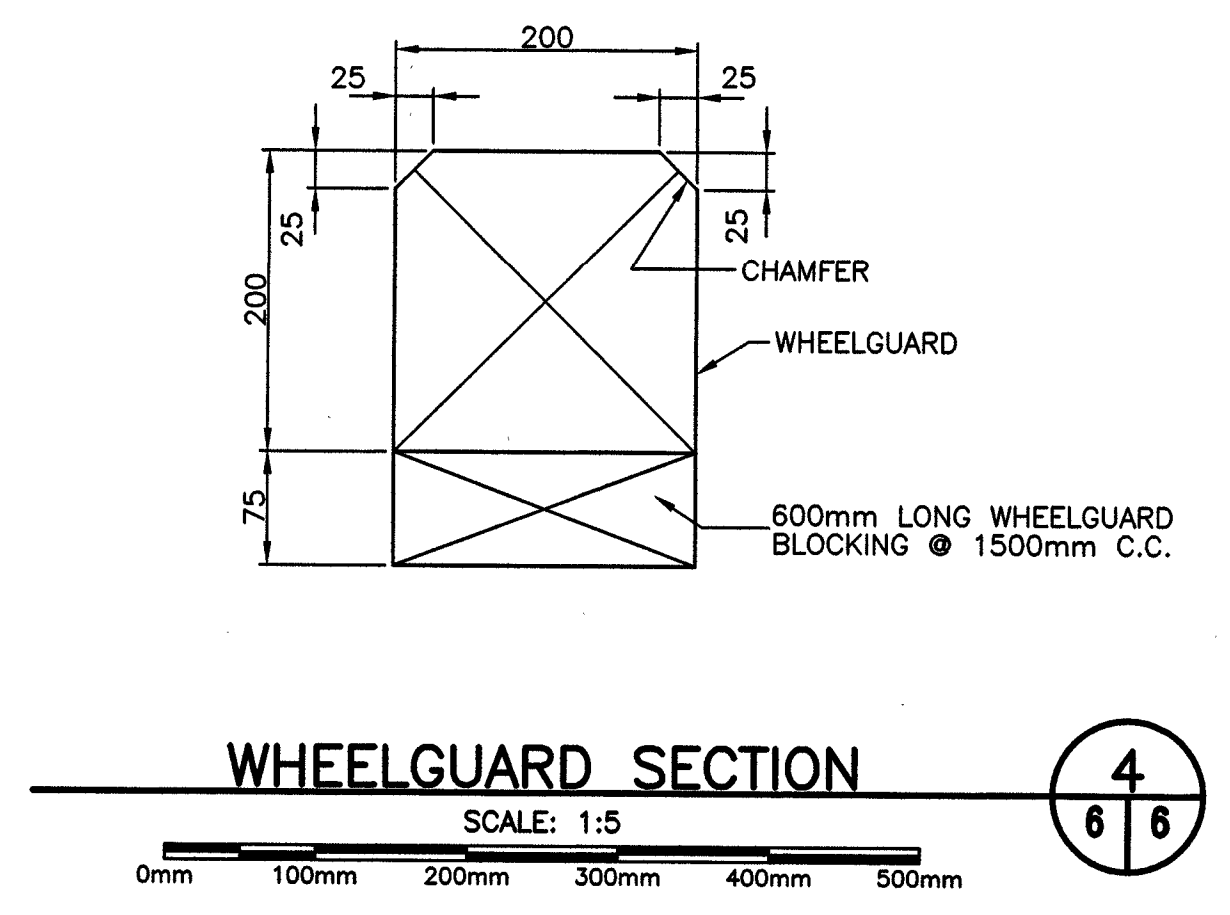
TYPE 'A' CLEFT BLOCK DETAIL
 SCALE: 1:20



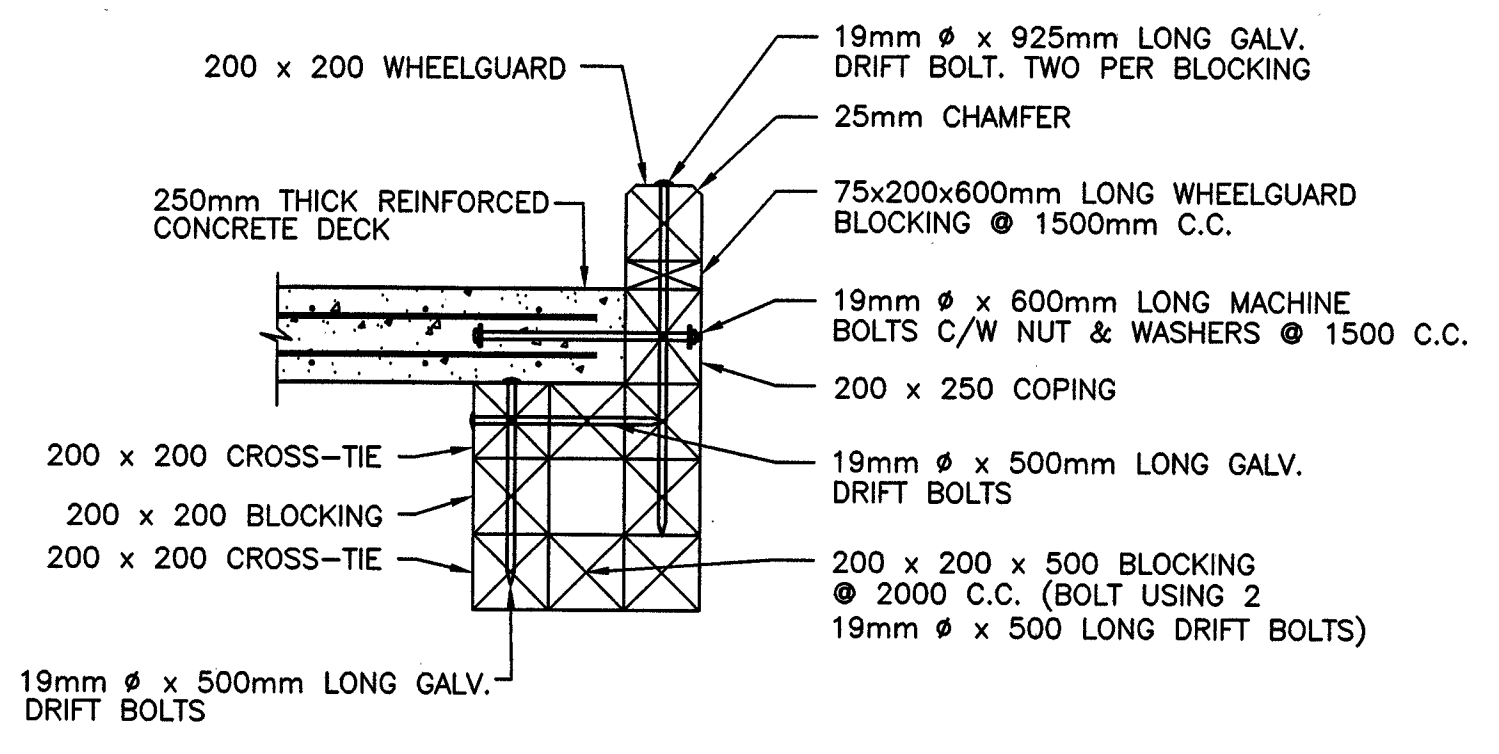
TYPE 'A' CLEFT
 SCALE: 1:10



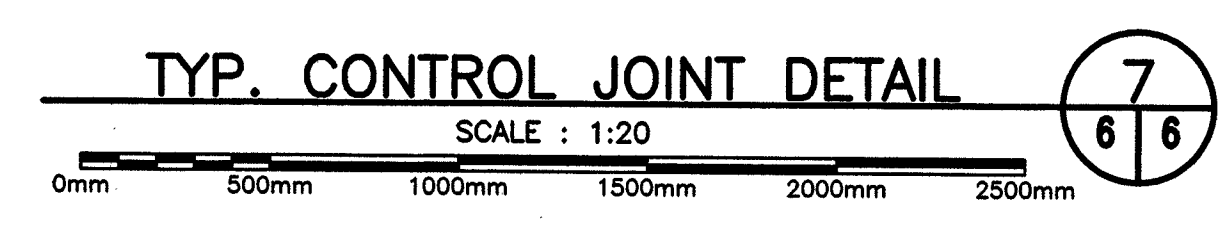
WHEELGUARD AND COPING DETAIL
 SCALE: 1:20



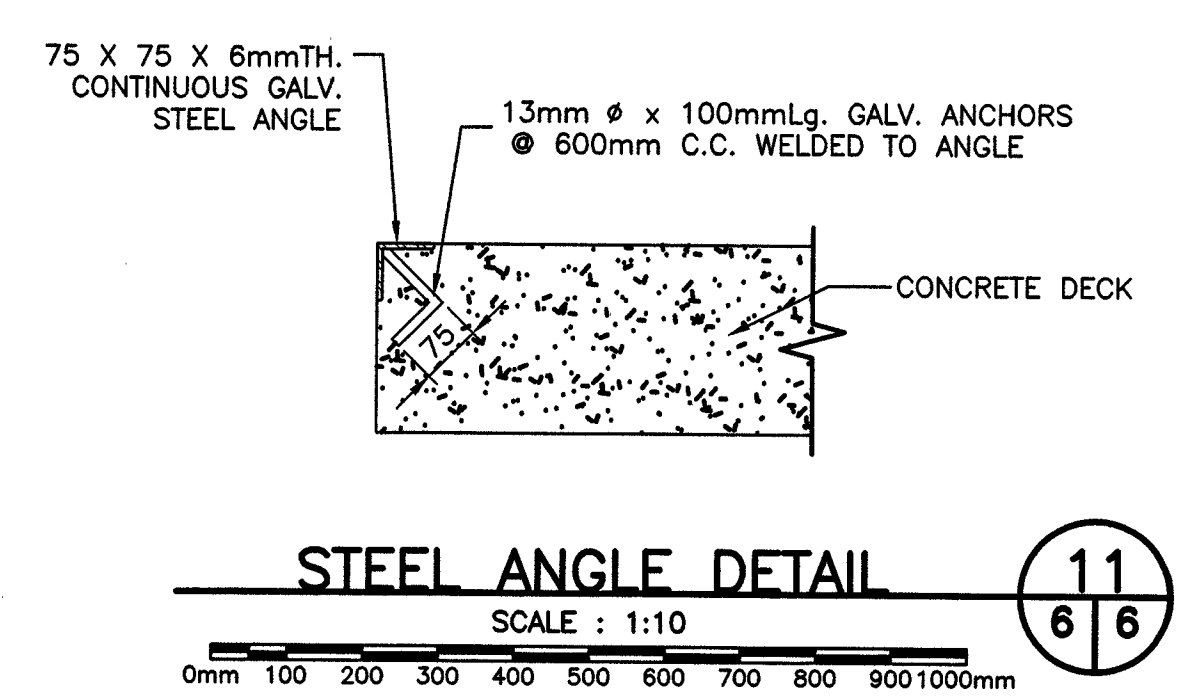
LADDER DETAIL
 SCALE: 1:20



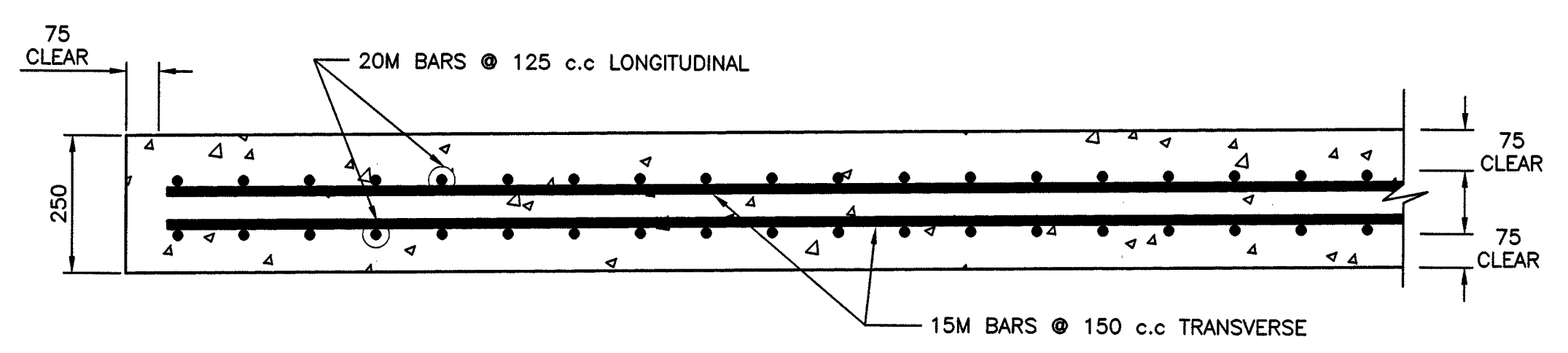
THICKENED SLAB FOR FUTURE JIB CRANE
 SCALE: 1:25



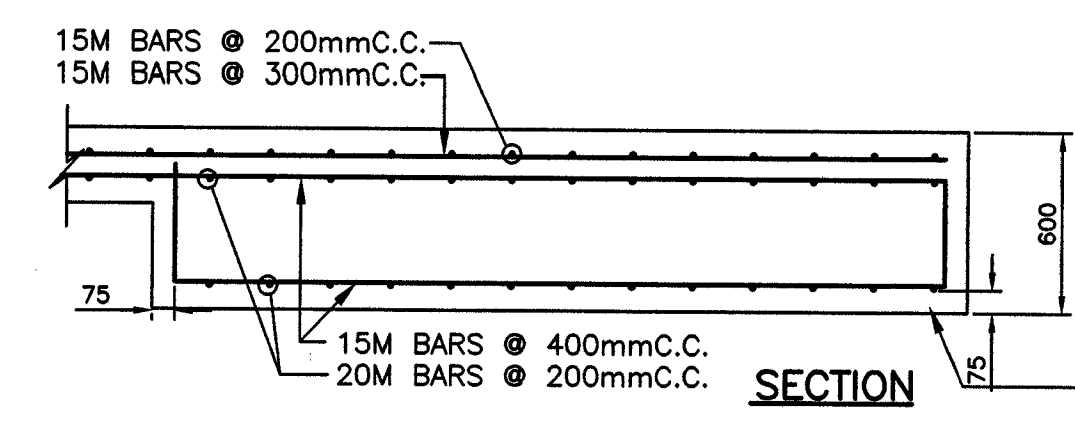
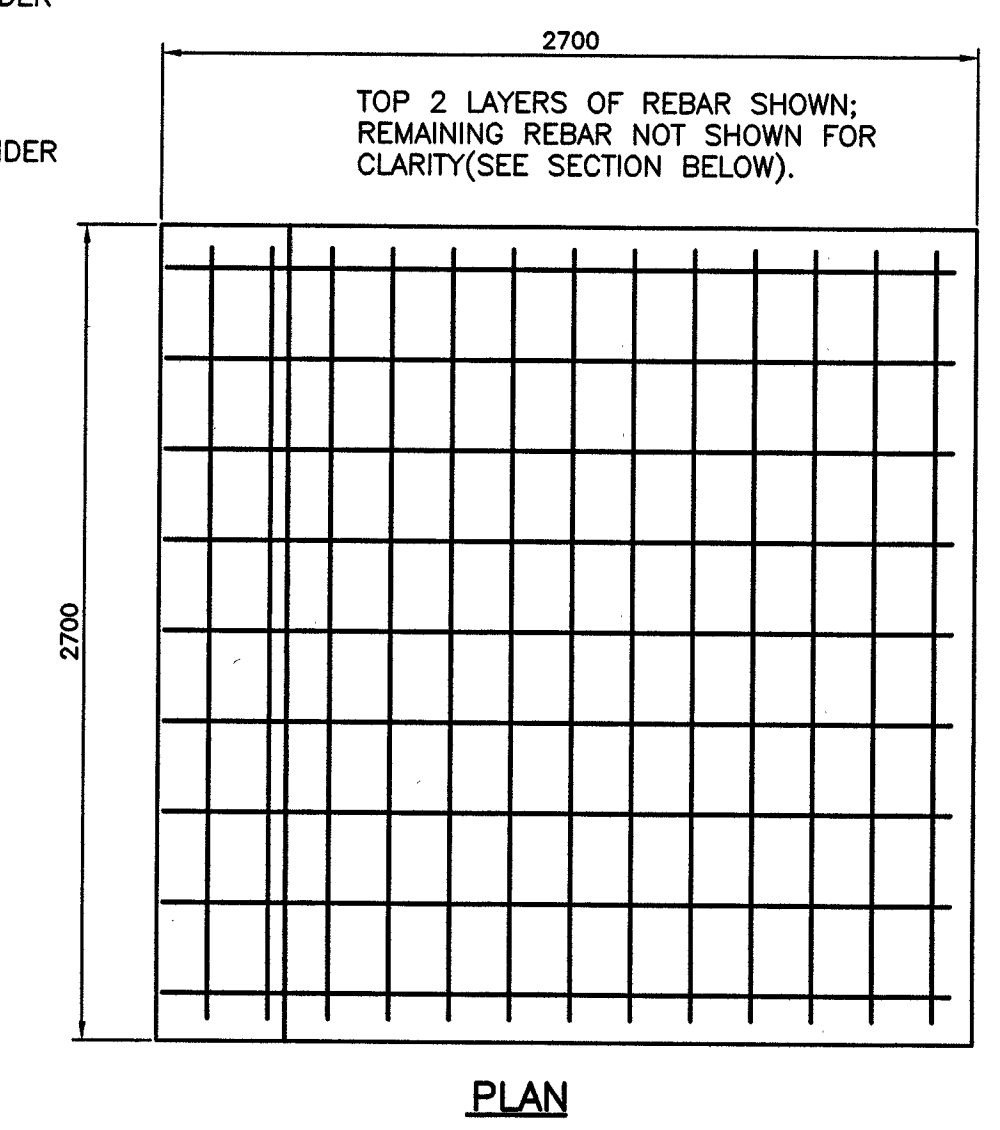
TYP. CONTROL JOINT DETAIL
 SCALE: 1:20



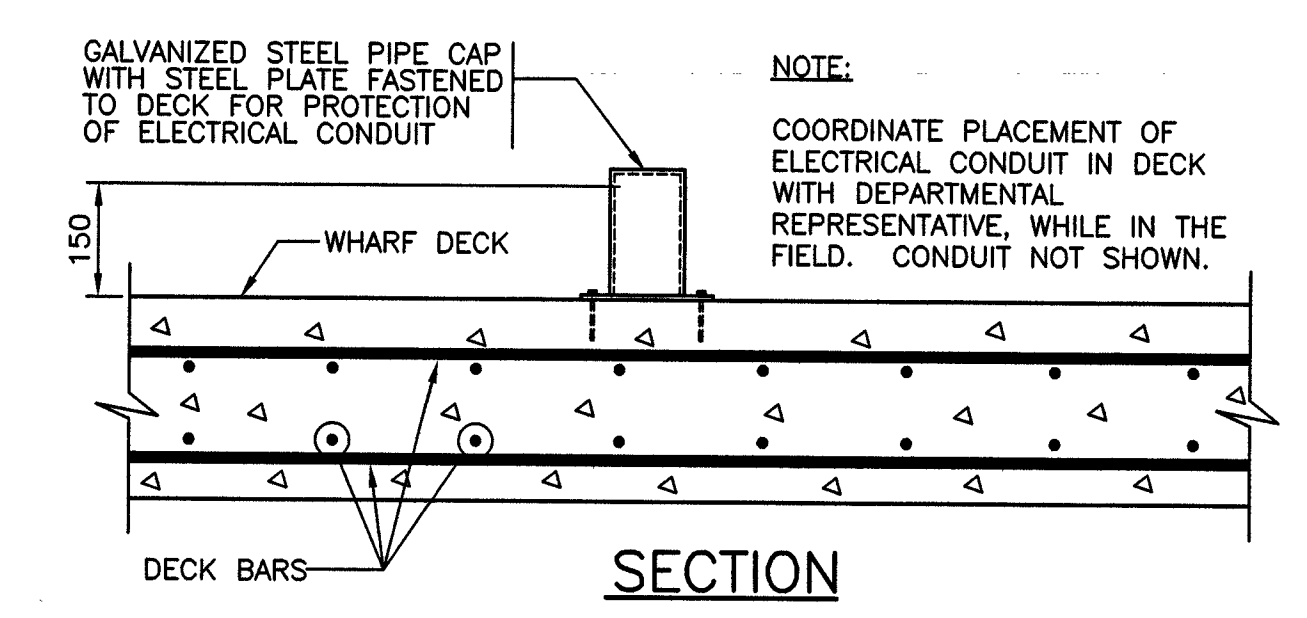
STEEL ANGLE DETAIL
 SCALE: 1:10



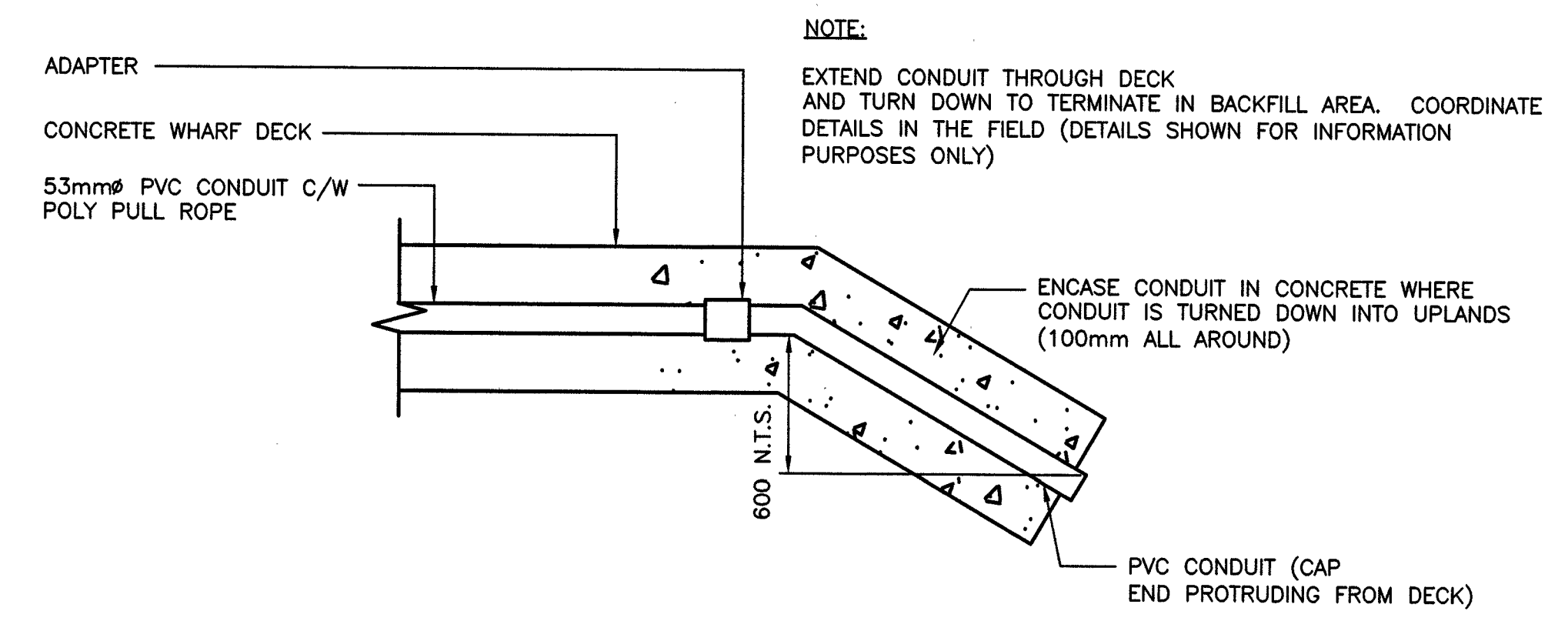
REINFORCED CONCRETE DECK
 SCALE: 1:10



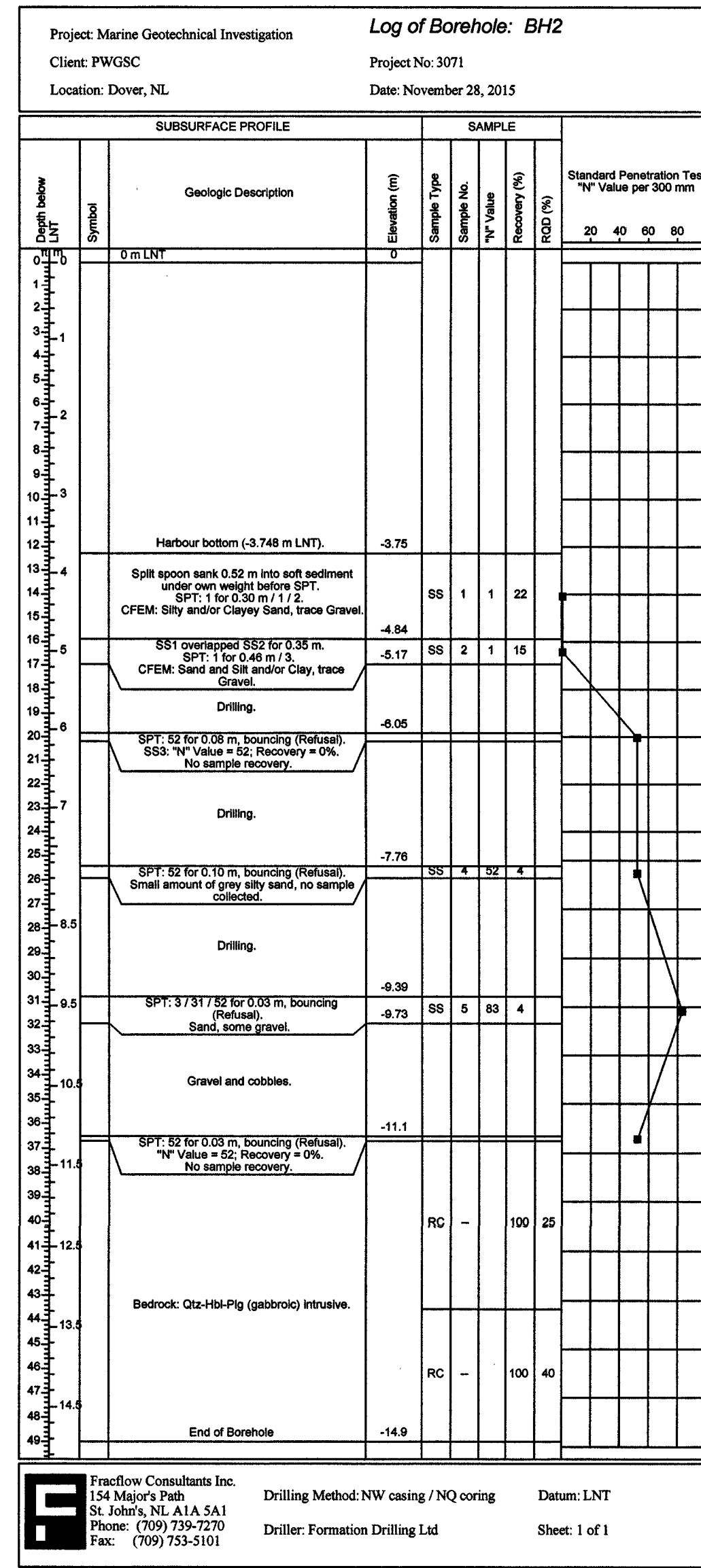
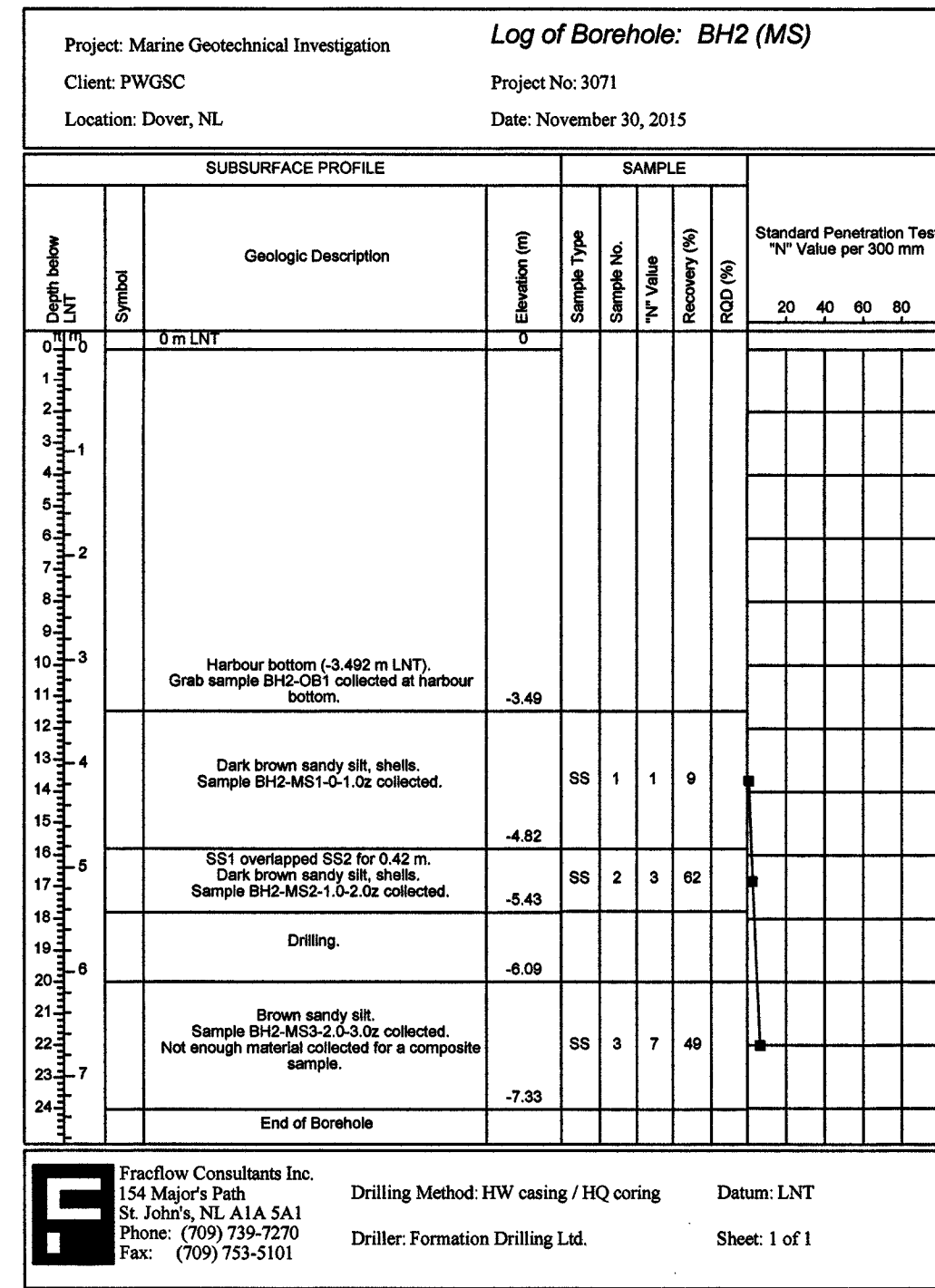
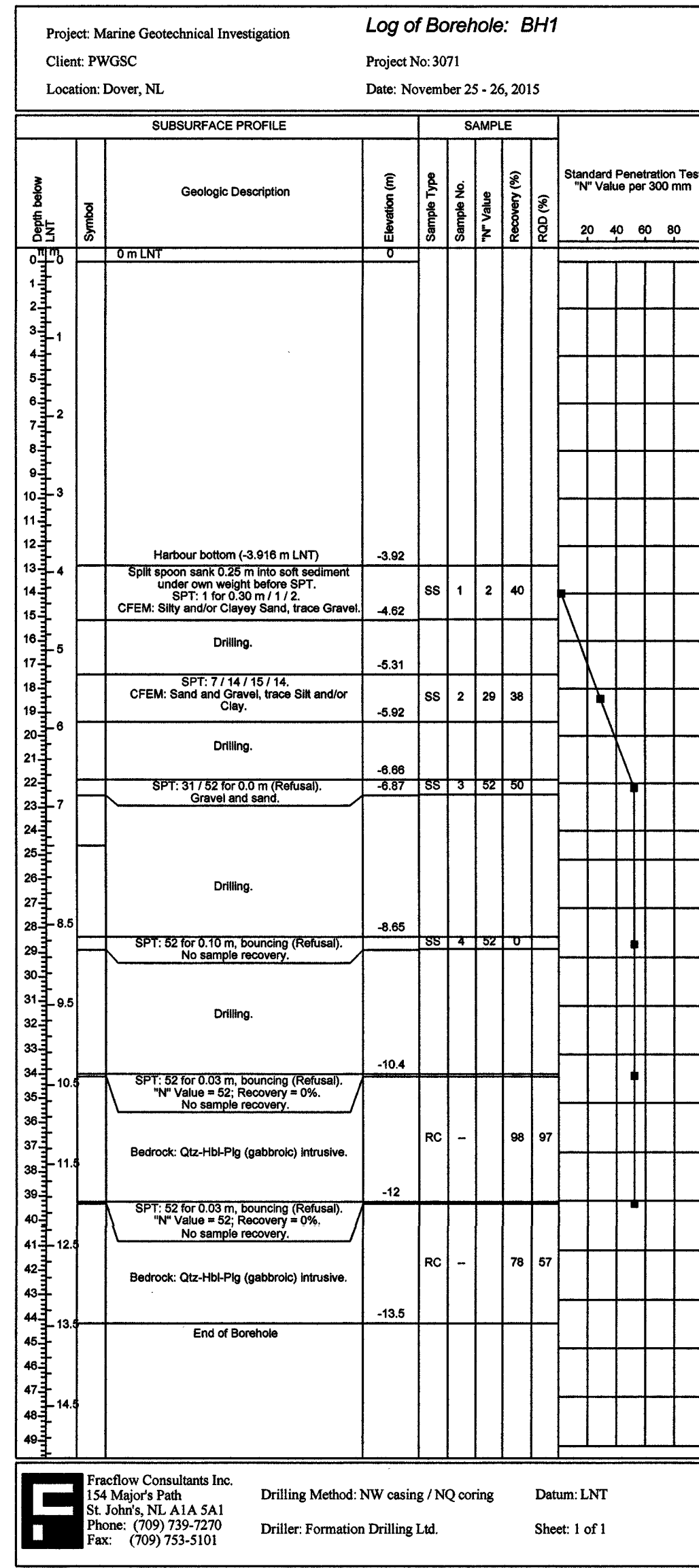
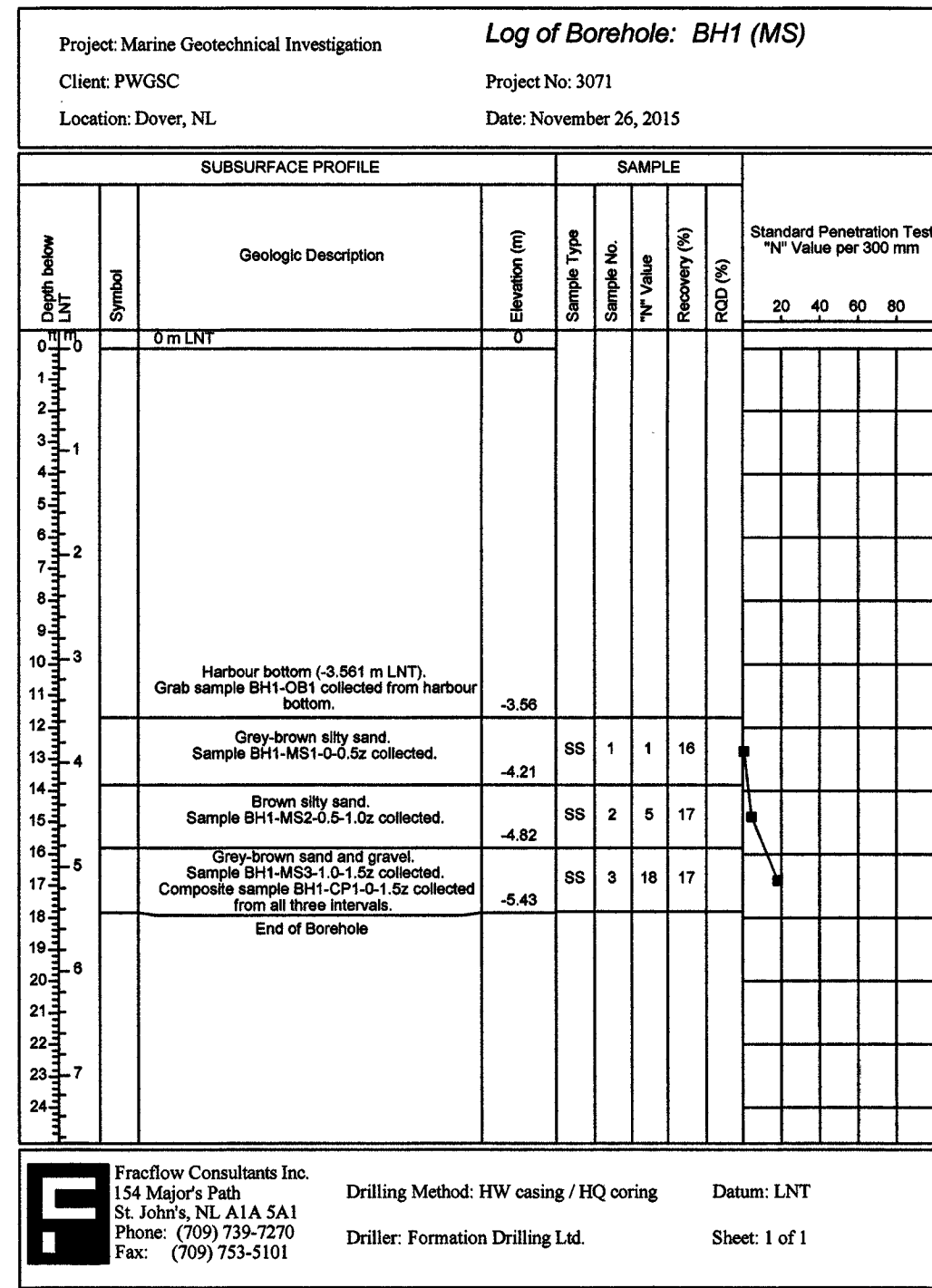
THICKENED SLAB FOR FUTURE JIB CRANE
 SCALE: 1:25



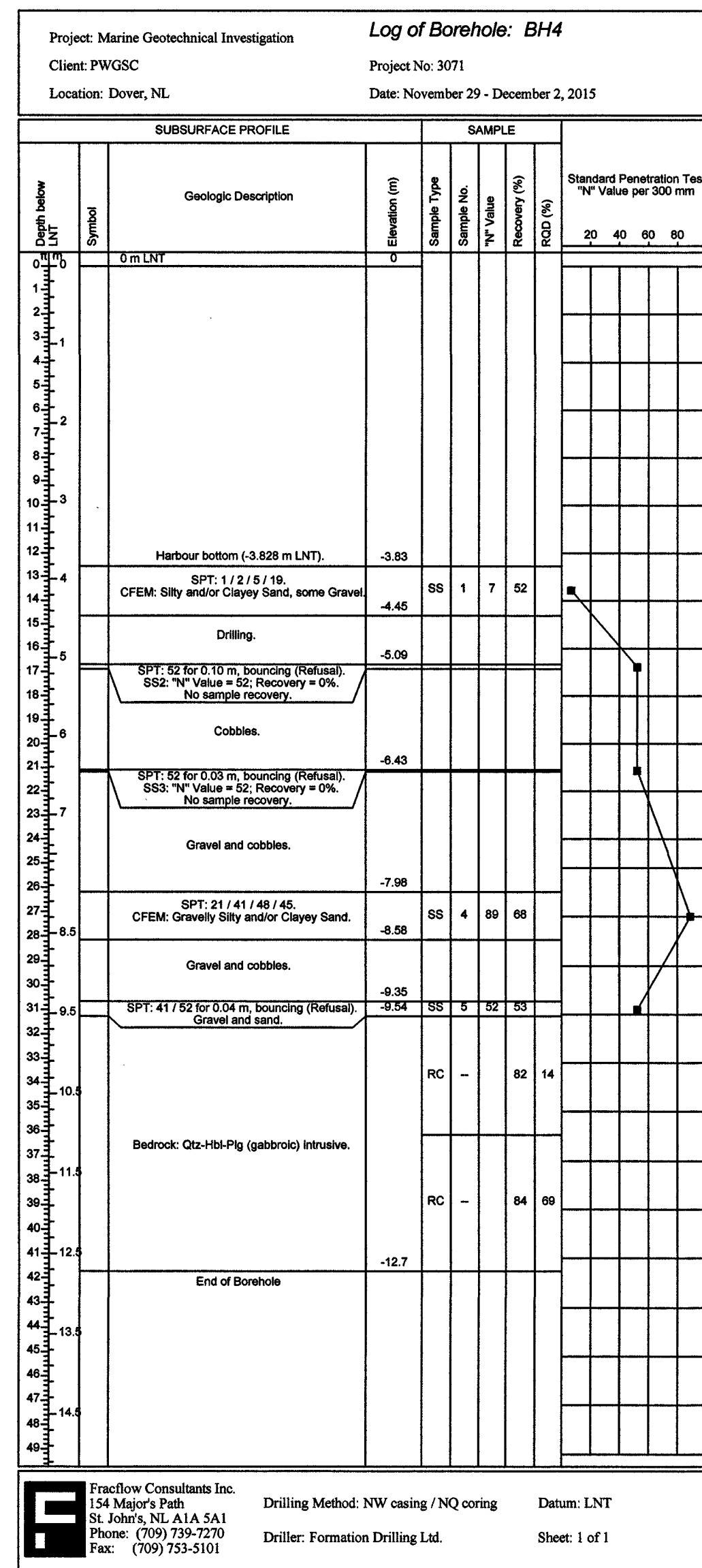
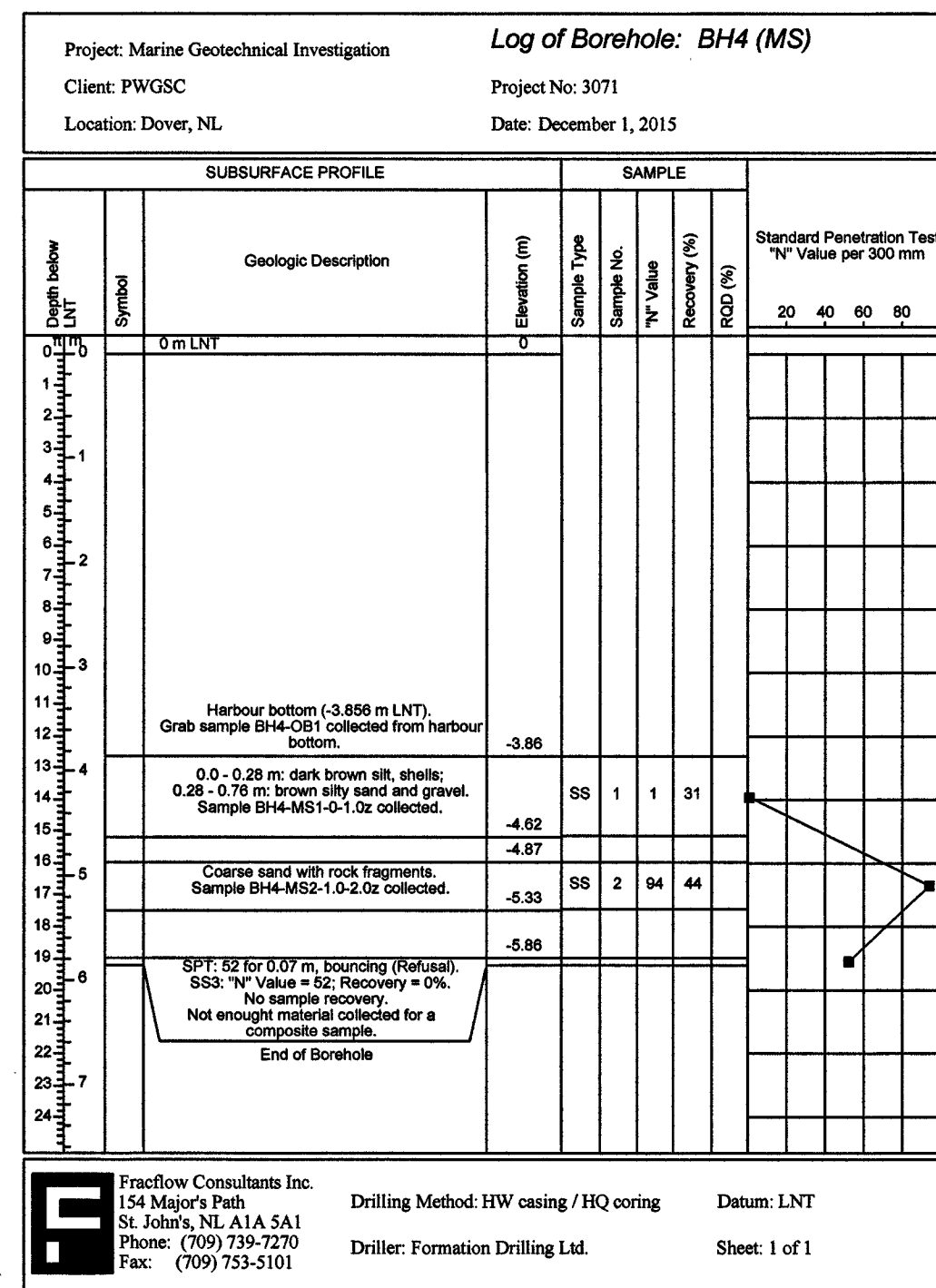
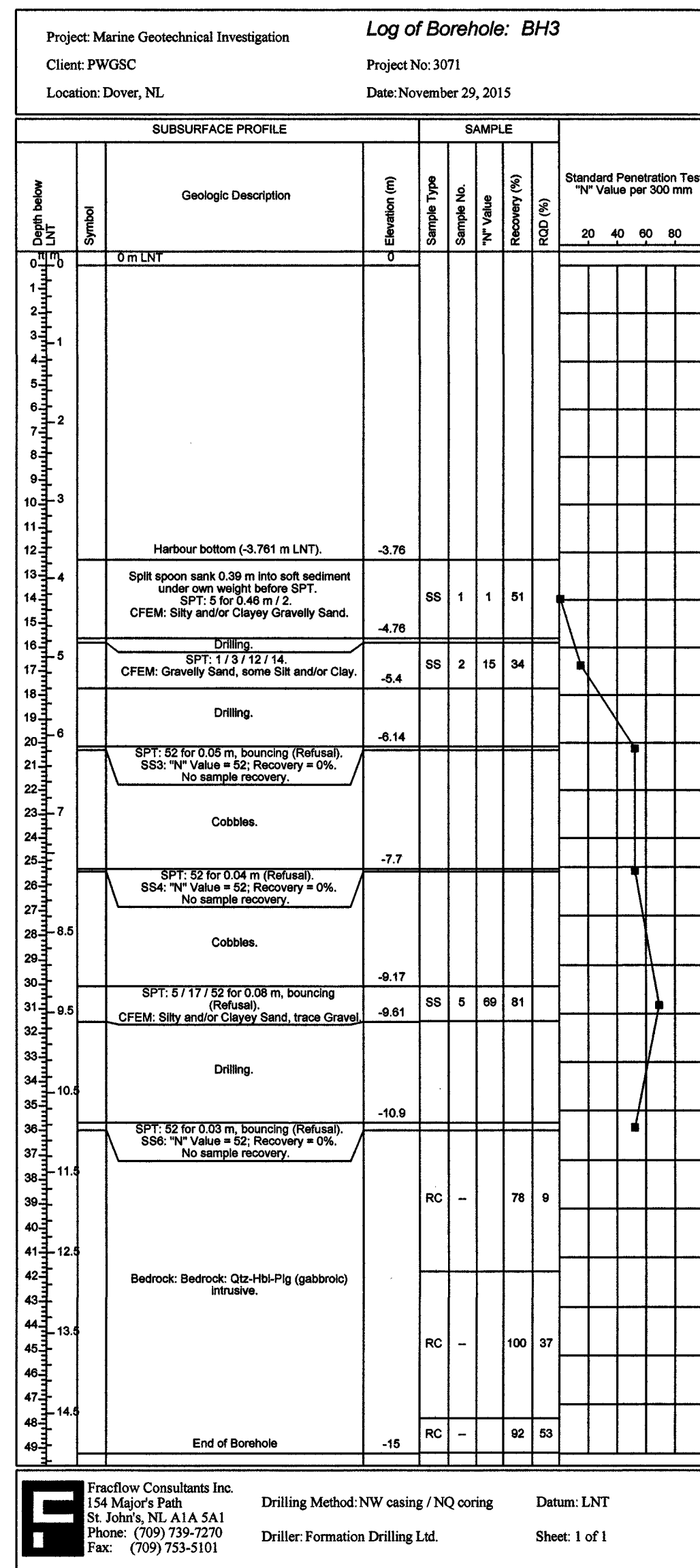
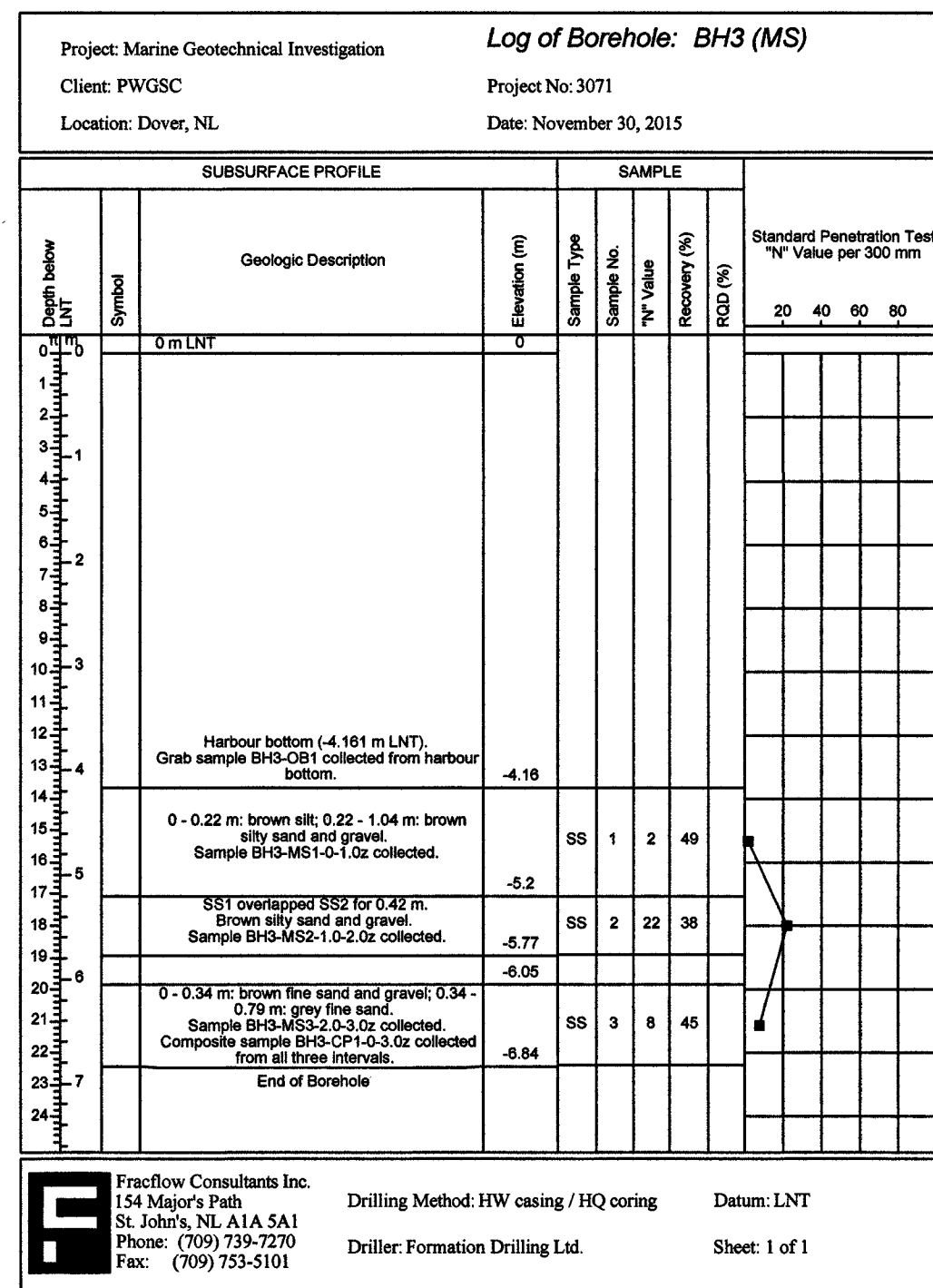
CAP FOR CONDUIT
 SCALE: 1:10



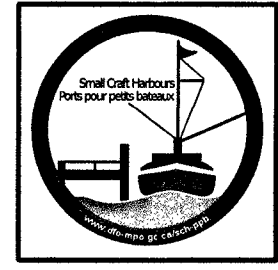
CONDUIT IN UPLANDS
 SCALE: 1:10



NOTE:
1. FULL GEOTECHNICAL REPORT IS AVAILABLE FOR REVIEW BY CONTACTING THE DEPARTMENTAL REPRESENTATIVE.

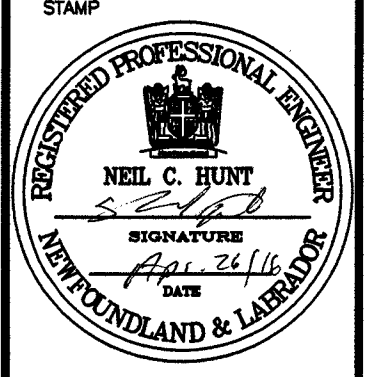


SMALL CRAFT HARBOURS



- NOTES:
1. ALL ELEVATIONS ARE IN METRES UNLESS OTHERWISE NOTED.
2. ALL DIMENSIONS ARE IN MILLIMETRES UNLESS OTHERWISE NOTED.

PROVINCE OF NEWFOUNDLAND
PERMIT HOLDER
This Permit Allows
APN ENGINEERING INC.
To practice Professional Engineering in Newfoundland and Labrador.
Permit No. as issued by APEQNL P0282
which is valid for the year 2016.



C	ISSUED FOR TENDER	13/01/16
B	ISSUED FOR 90% REVIEW	07/12/15
A	ISSUED FOR 60% REVIEW	24/10/15
revisions		date

project
WHARF CONSTRUCTION
DOVER, NL

drawing desain

BOREHOLES

designated N.H. concou
date JANUARY 13, 2016
drawn P.H. desaine
date JANUARY 13, 2016
approved approve

Tender Paul Curran Submission
DFD Project Manager
project number 714114 no. du projet