

ANNEX A – 1200-VESSEL STEERING GEAR PICTURES

STEERING GEAR EQUIPMENT THAT MUST BE KEPT

ÉQUIPEMENT D'APPAREIL À GOUVERNER À CONSERVER

Cylinder rams – Vérins

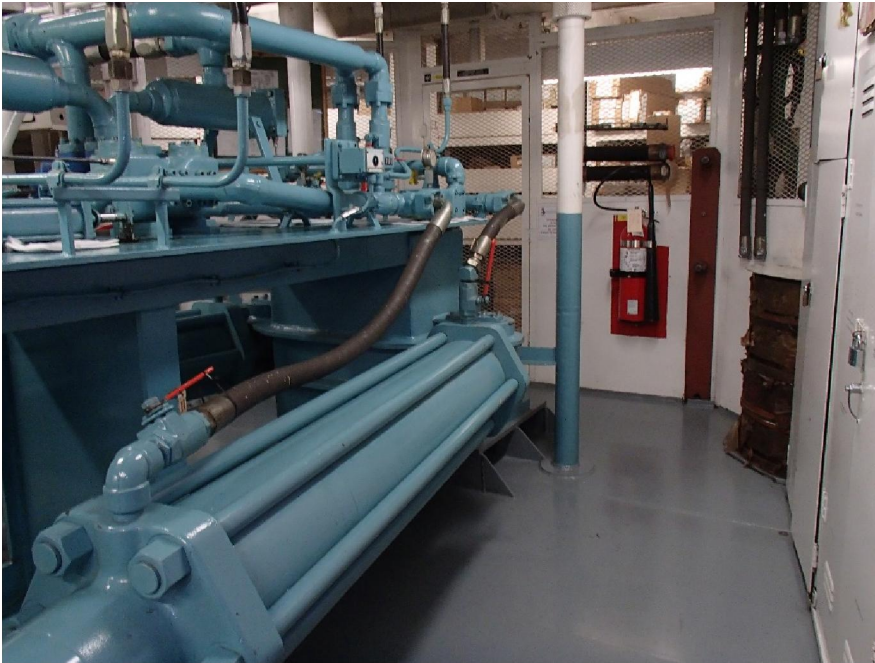


Photo no. 1 : Radisson Port Ram – Vérin Bâbord



Photo no. 2 : Amundsen Port Ram – Vérin Bâbord



Photo no. 3 : Des Groseilliers Port Ram – Vérin Bâbord

Rudder Tiller – Barre du gouvernail

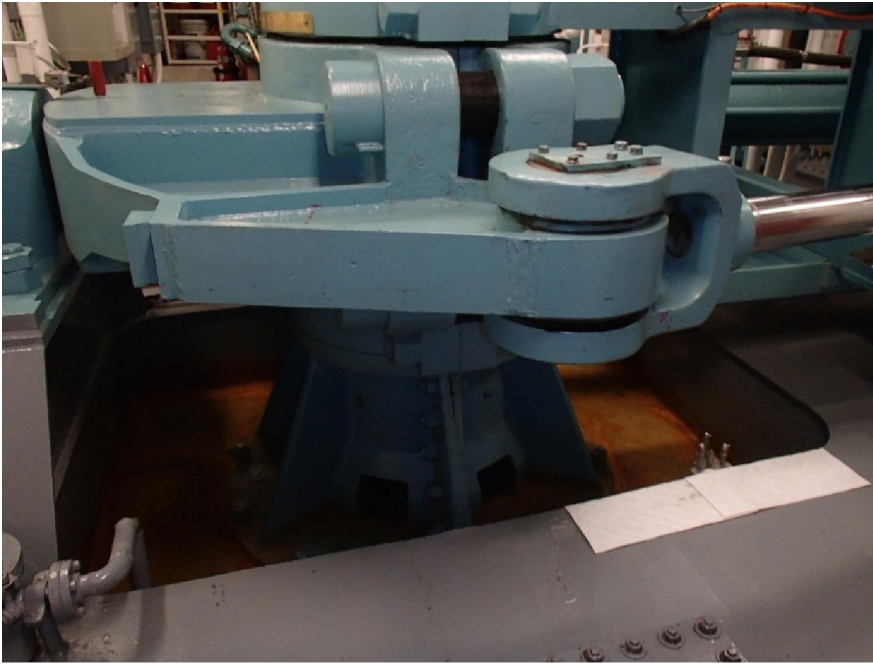


Photo no. 4 : Radisson Tiller Port – Barre Bâbord

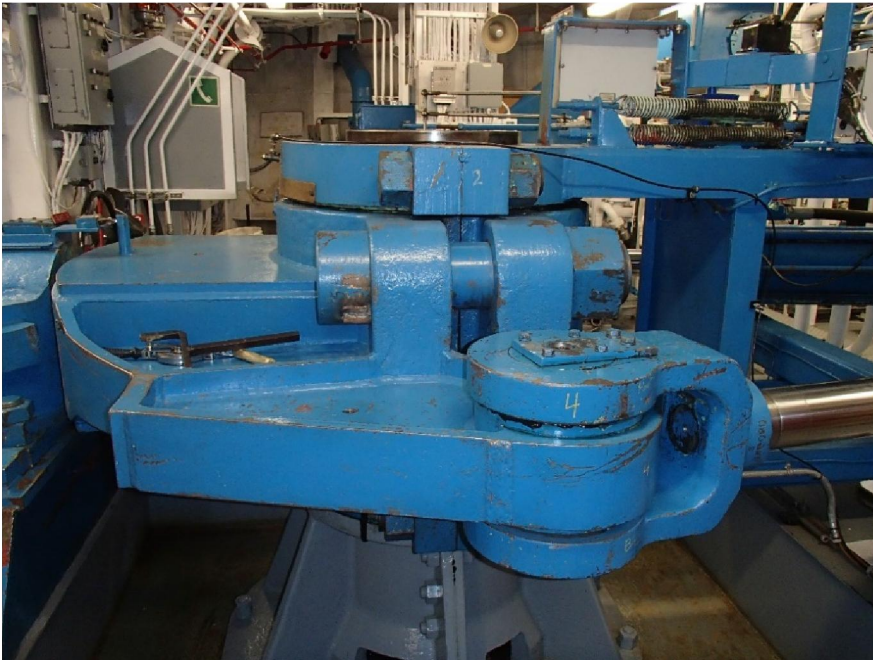


Photo no. 5 : Amundsen Tiller Port – Barre Bâbord

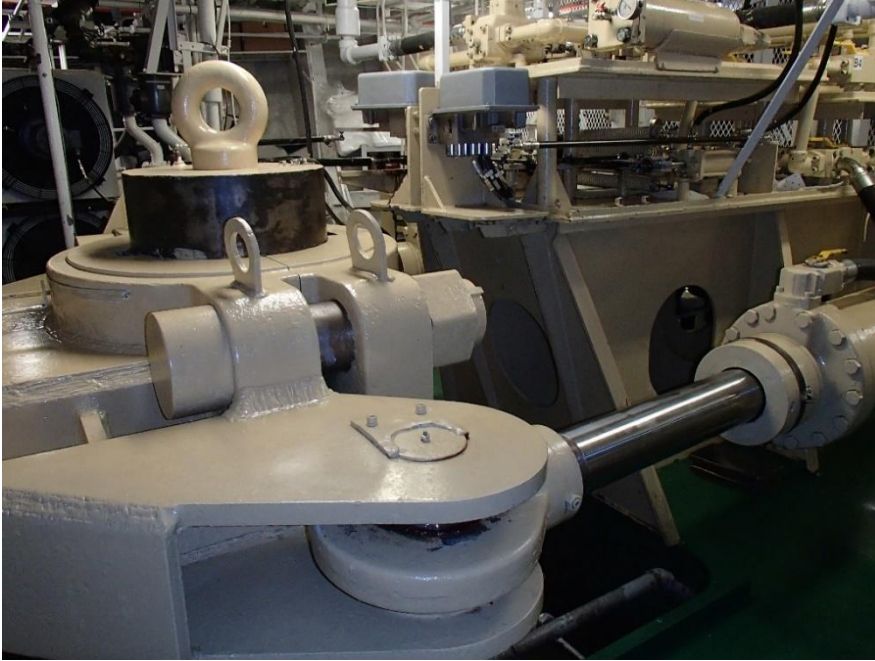


Photo no. 6 : Des Groseilliers Tiller Port – Barre Bâbord

Tiller Lock Pin – Cheville de bloquage



Photo no. 7 : Radisson Lock Pin – Cheville de bloquage



Photo no. 8 : Amundsen Lock Pin – Cheville de bloquage



Photo no. 9 : Des Groseilliers Lock Pin – Cheville de bloquage

Main Oil Tank – Réservoir d'huile principal

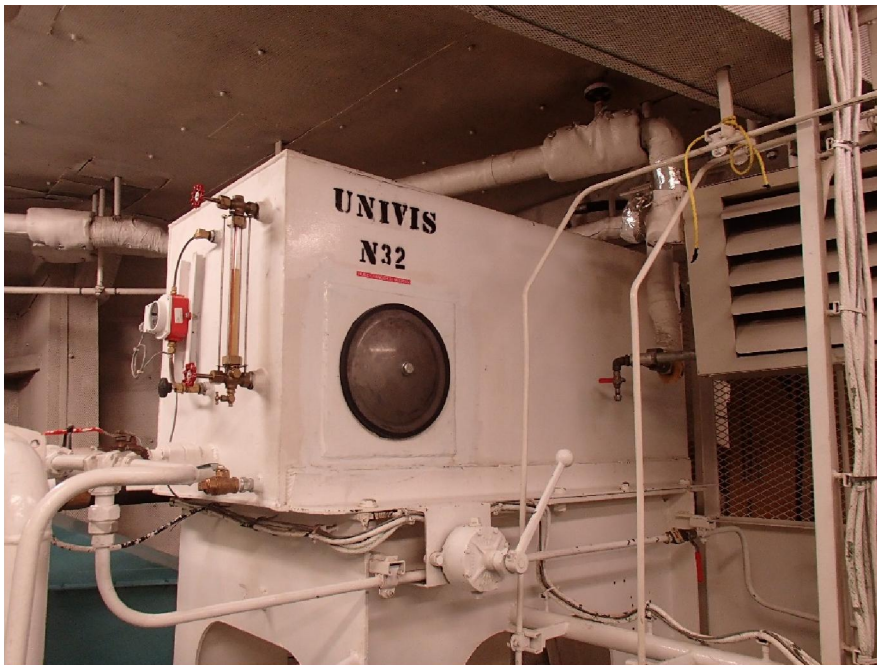


Photo no. 10 : Radisson Main Tank – Réservoir principal

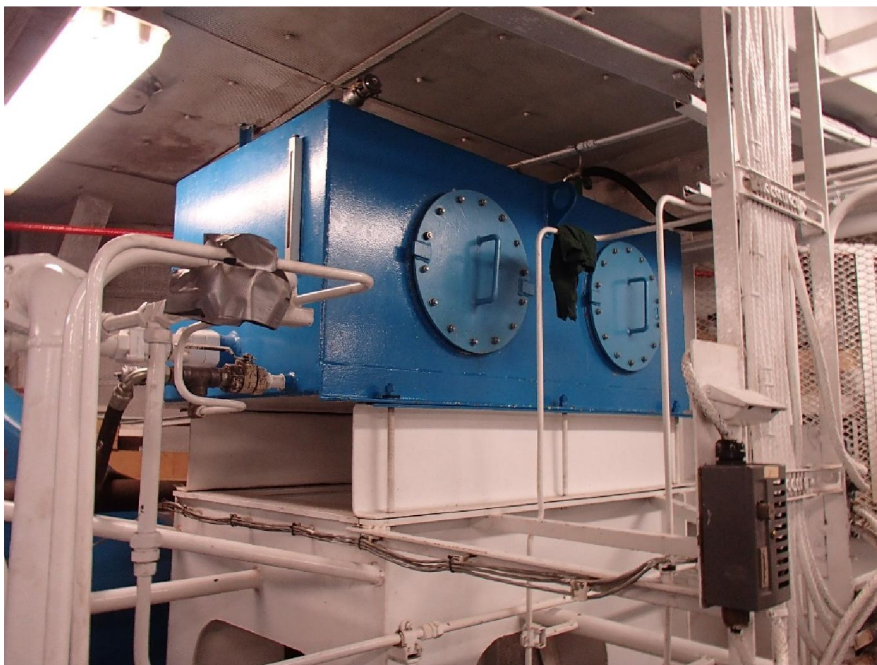


Photo no. 11 : Amundsen Main Tank – Réservoir principal



Photo no. 12 : Des Groseilliers Main Tank – Réservoir principal

STEERING GEAR EQUIPMENT TO BE REPLACED

ÉQUIPEMENT D'APPAREIL À GOUVERNER À REMPLACER

Main Power Pumps – Pompes principales



Photo no. 13 : Radisson Power Pumps – Pompes puissance principales



Photo no. 14 : Amundsen Power Pumps – Pompes puissance principales



Photo no. 15 : Des Groseilliers Power Pumps – Pompes puissance principales

Lock Pin Pump – Pompe cheville bloquage

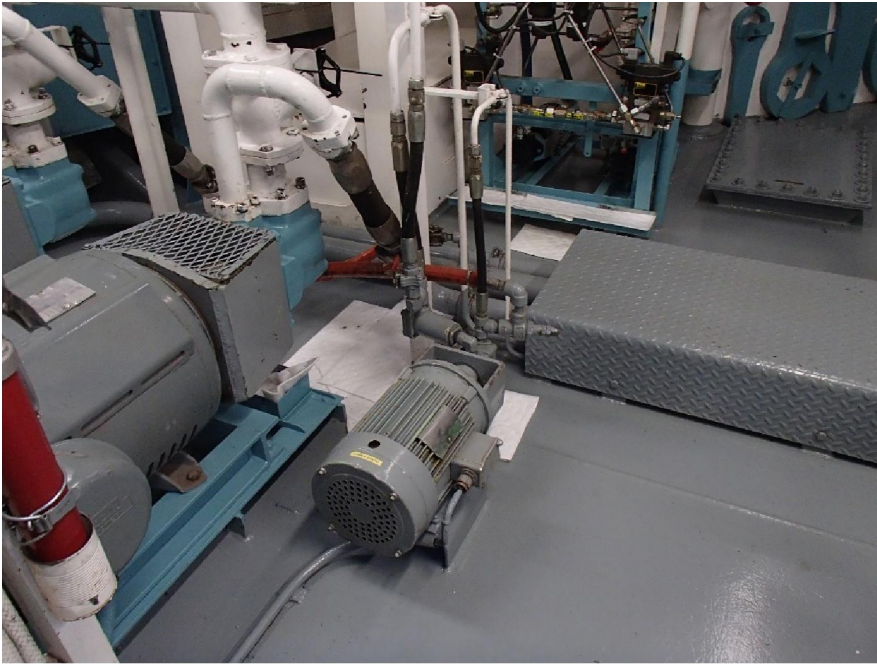


Photo no. 16 : Radisson Lock Pin Pump – Pompe cheville de bloquage

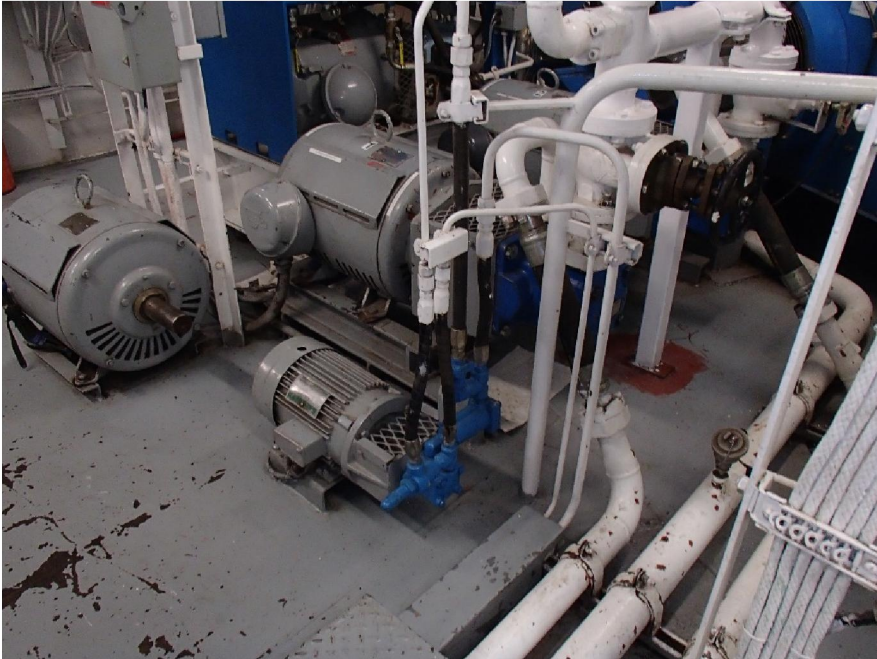
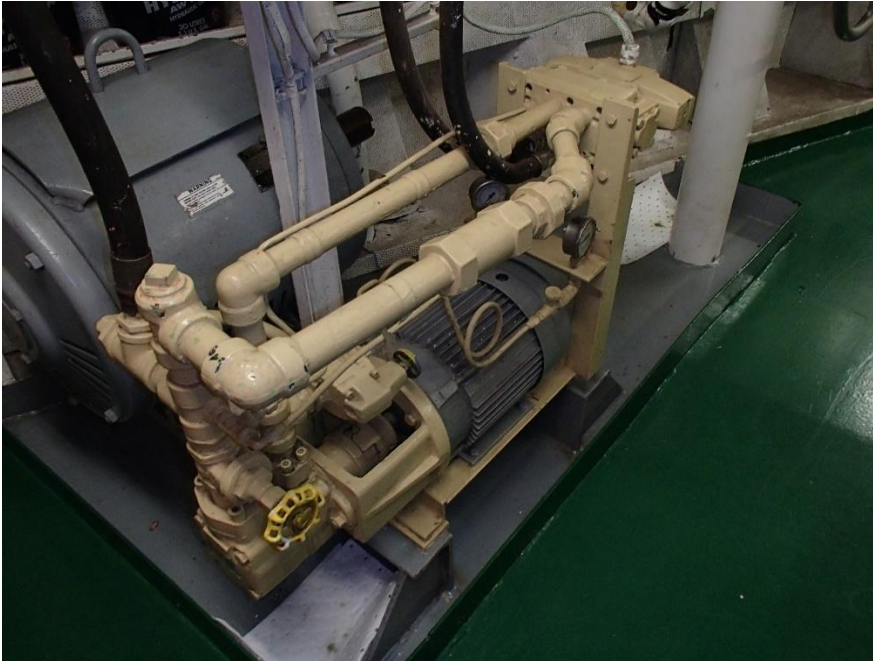


Photo no. 17 : Amundsen Lock Pin Pump – Pompe cheville de bloquage



*Photo no. 18 : Des Groseilliers Lock pin + Emergency Pump –
Pompe urgence + cheville bloquage*

Control System Pumps – Pompes contrôle du système

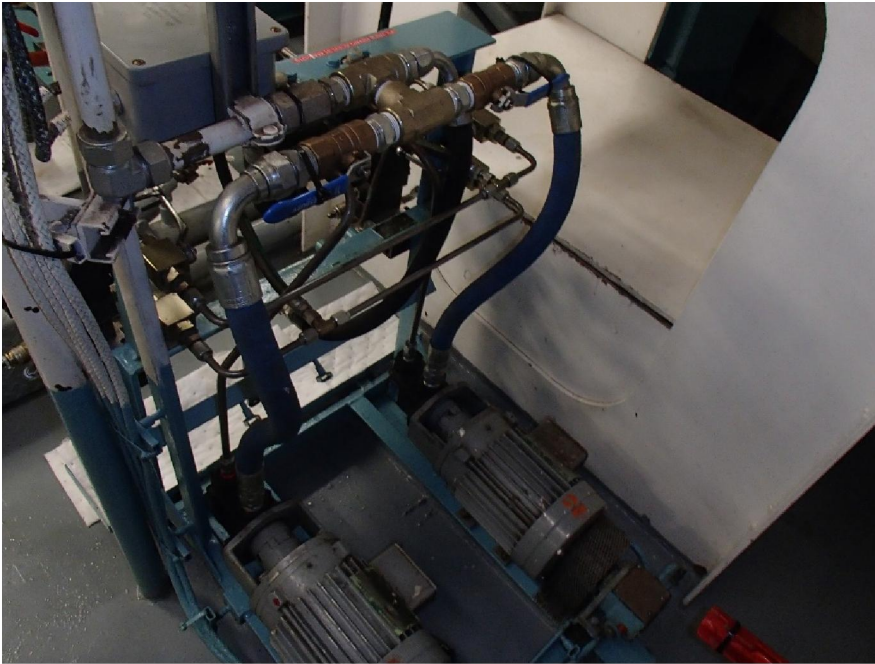


Photo no. 19 : Radisson Control Pumps – Pompes contrôle

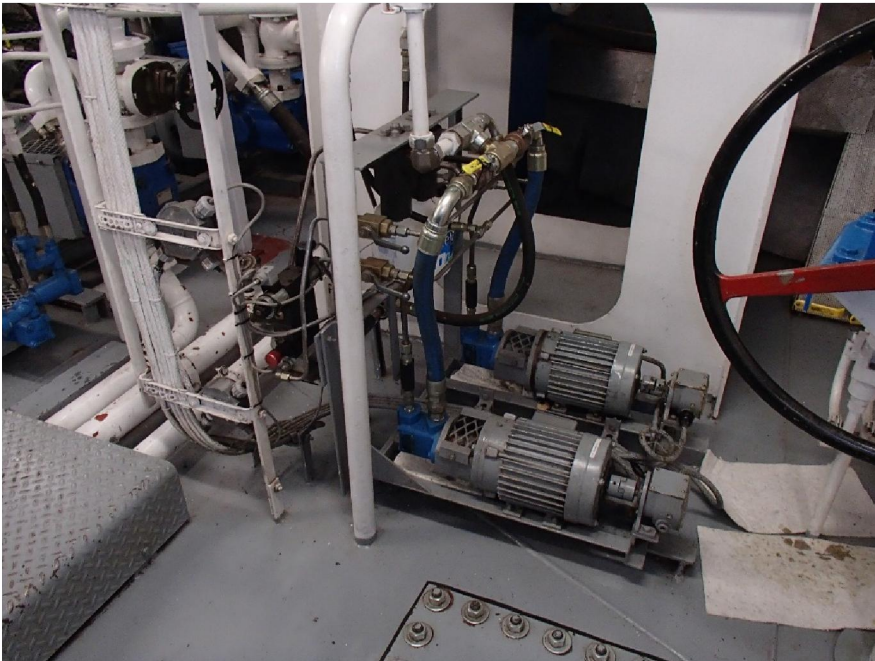


Photo no. 20 : Amundsen Control Pumps – Pompes contrôle



Photo no. 21 : Des Groseilliers Control Pumps – Pompe contrôle

Helm Pumps, Steering Gear – Pompes de barre, appareil gouverner



Photo no. 22 : Direct Emergency Helm Pump – Barre directe

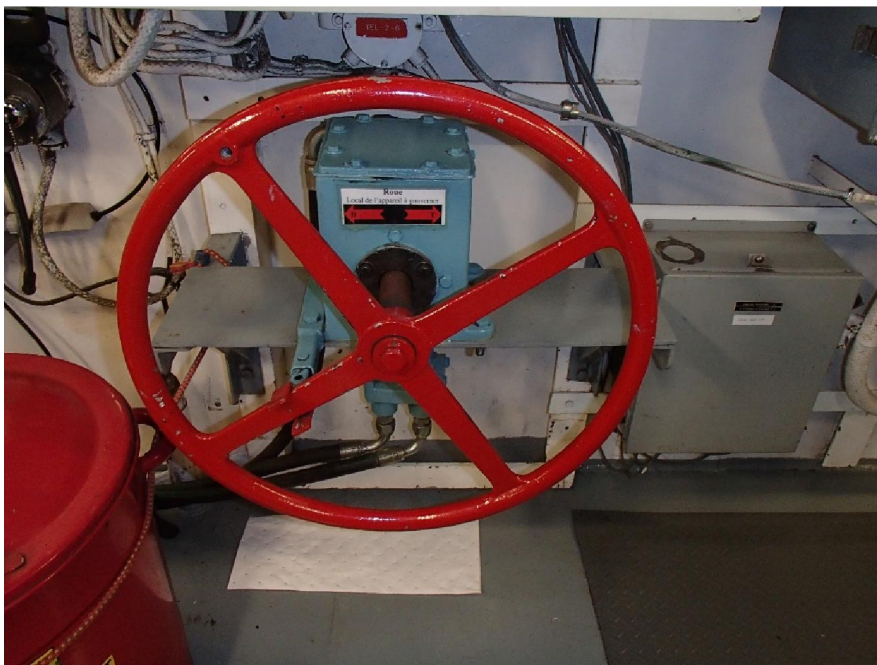
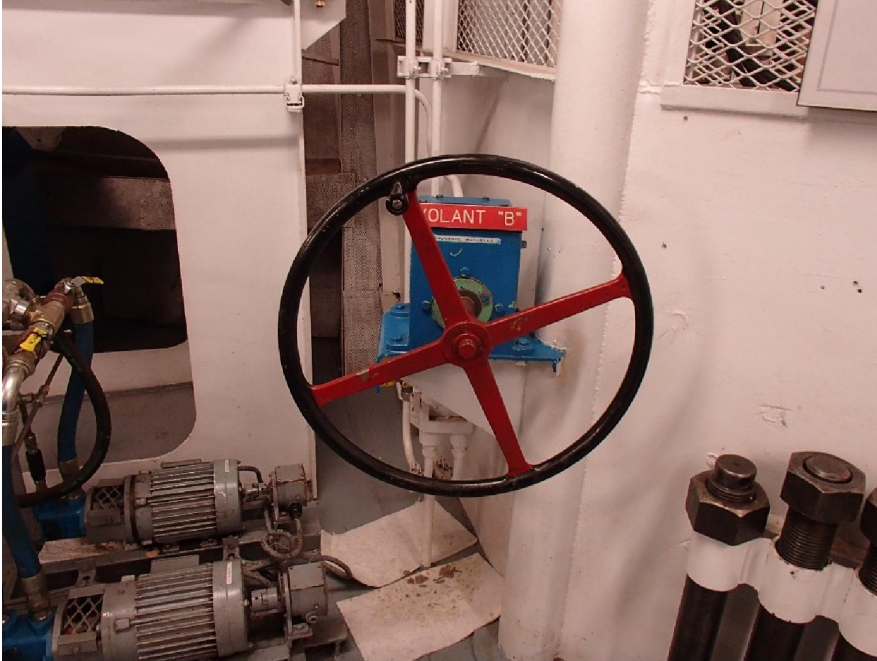


Photo no. 23 : Radisson Telemotor Helm Pump – Pompe barre télémoteur



*Photo no. 24 : Amundsen Direct Emergency Helm Pump –
Roue de pompe de barre directe*

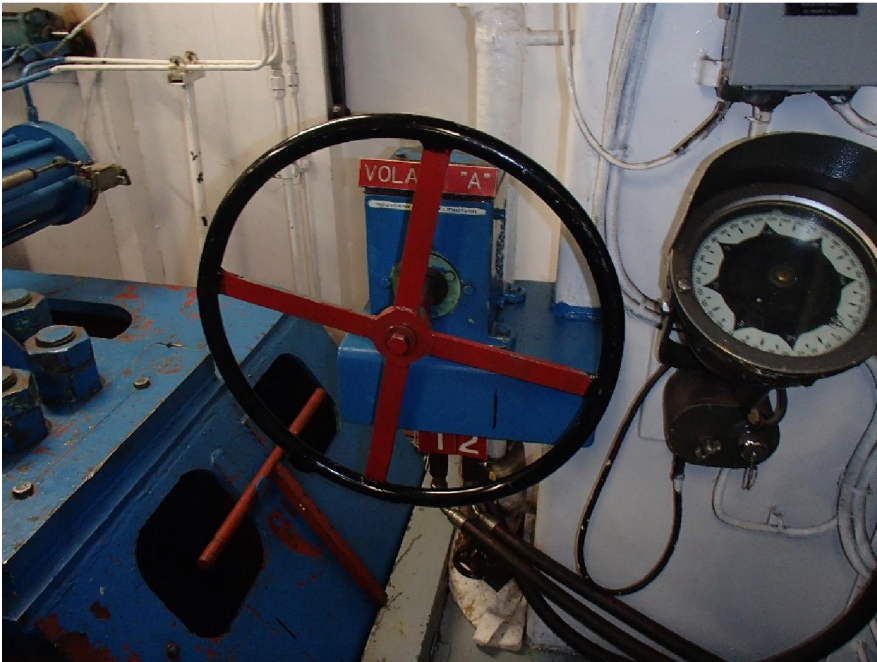


Photo no. 25 : Amundsen Telemotor Helm Pump – Pompe barre télémoteur

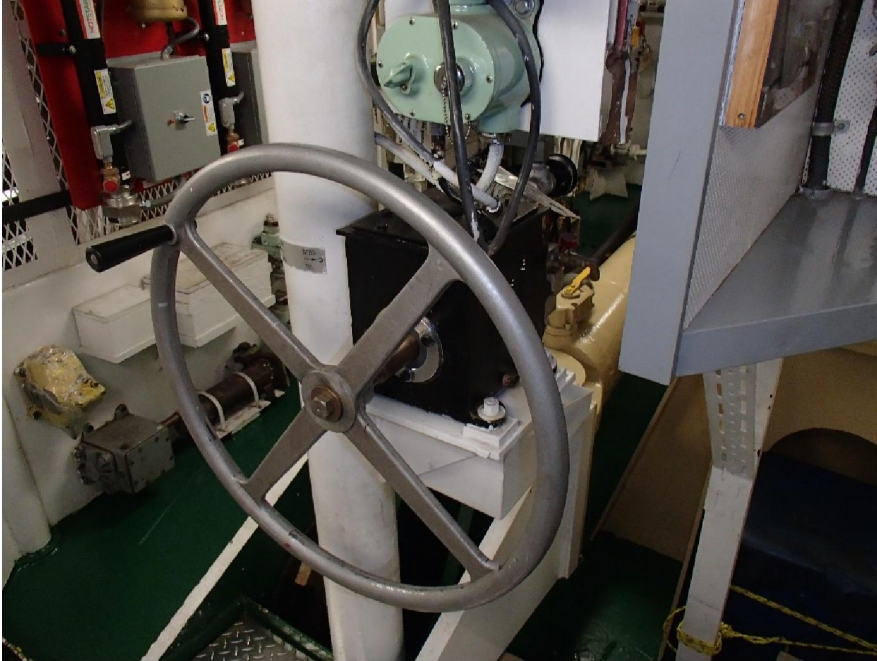


Photo no. 26 : Des Groseilliers Direct Emergency Helm Pump –

Roue de pompe de barre directe

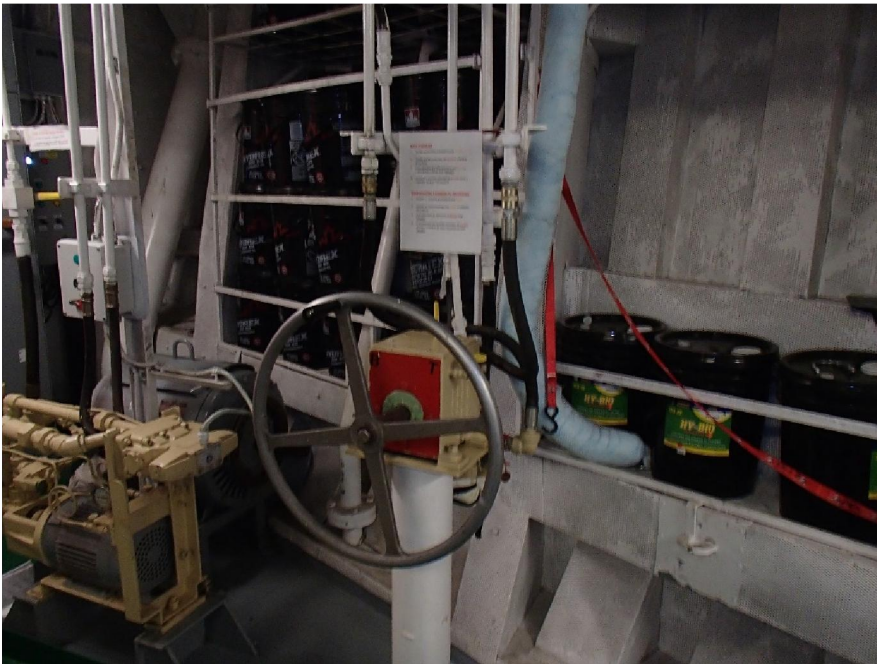


Photo no. 27 : Des Groseilliers Telemotor Helm Pump – Pompe de barre télémoteur

Telemotor Cylinder – Cylindre télémoteur

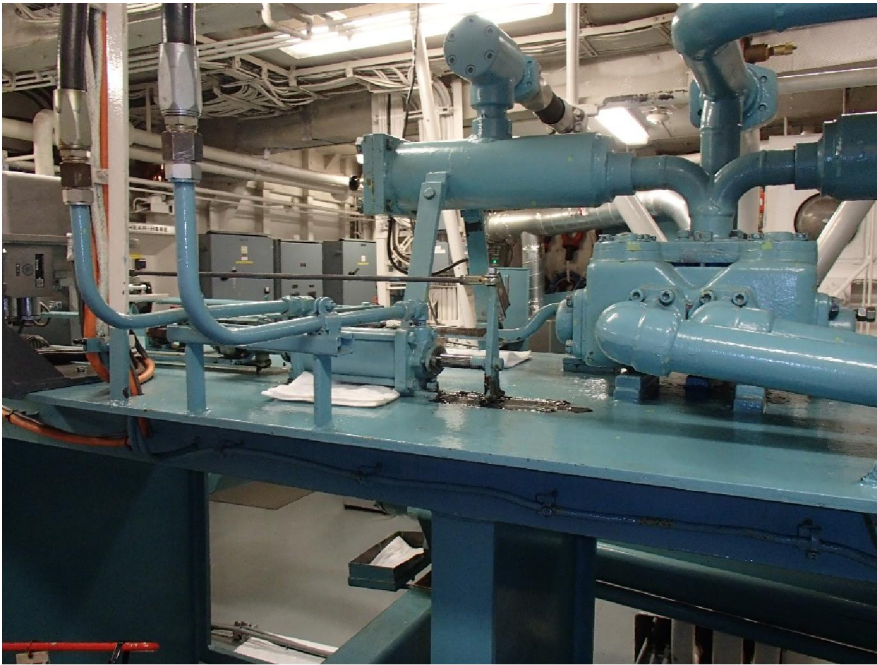


Photo no. 28 : Radisson Telemotor – Télémoteur



Photo no. 29 : Amundsen Telemotor – Télémoteur



Photo no. 30 : Des Groseilliers Telemotor – Télémoteur

4-Way Valves – Soupapes 4 voies



Photo no. 31 : Radisson 4-Way Valve – Soupape 4 voies



Photo no. 32 : Amundsen 4-Way Valve – Soupape 4 voies



Photo no. 33 : Des Groseilliers 4-Way Valves – Soupapes 4 voies

Heat Exchangers – Refroidisseurs huile



Photo no. 34 : Radisson Heat Exchanger – Refroidisseur



Photo no. 35 : Amundsen Cooler – Refroidisseur



Photo no. 36 : Des Groseilliers Cooler – Refroidisseur

Central console Wheelhouse – Console centrale timonerie



Photo no. 37 : Radisson Complete view Central console –

Vue complète console centrale



Photo no. 38 : Amundsen Complete view Central console –

Vue complète console centrale



*Photo no. 39 : Des Groseilliers Complete view Central Console –
Vue complète console centrale*

System General Views – Vues générales système

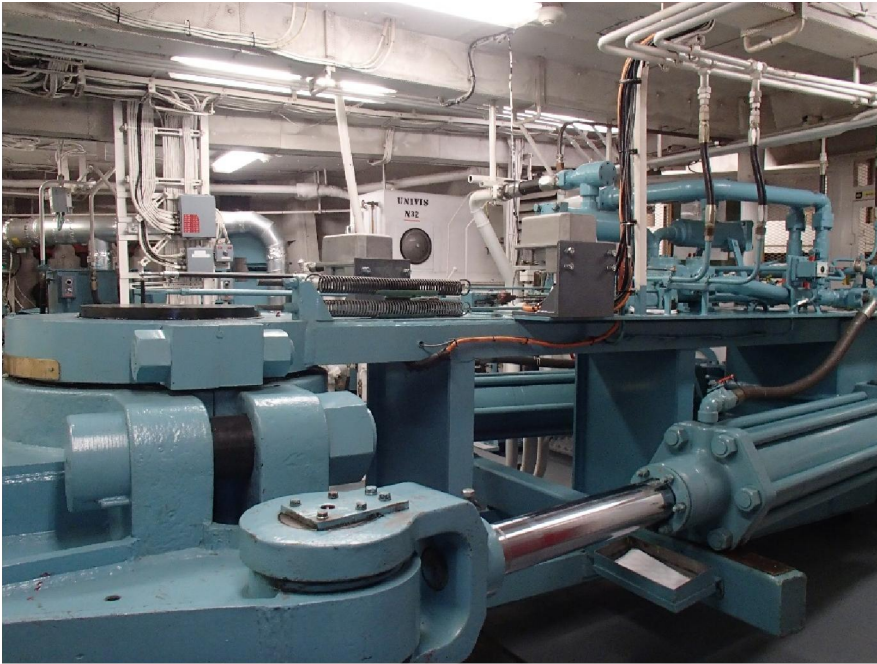


Photo no. 40 : Radisson Port Side View – Vue bâbord



Photo no. 41 : Radisson Stbd Side View – Vue tribord

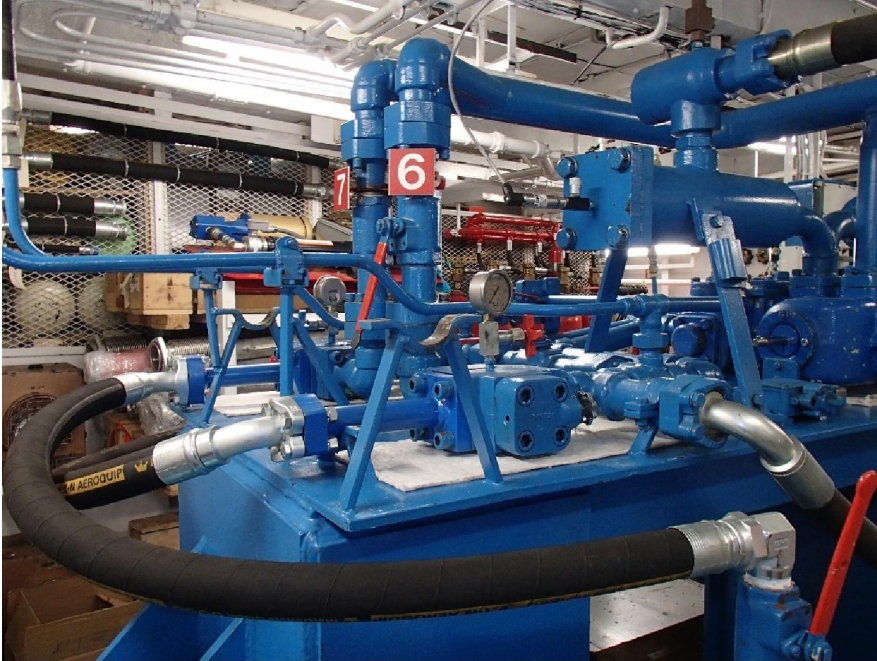


Photo no. 42 : Amundsen Aft view – Vue arrière

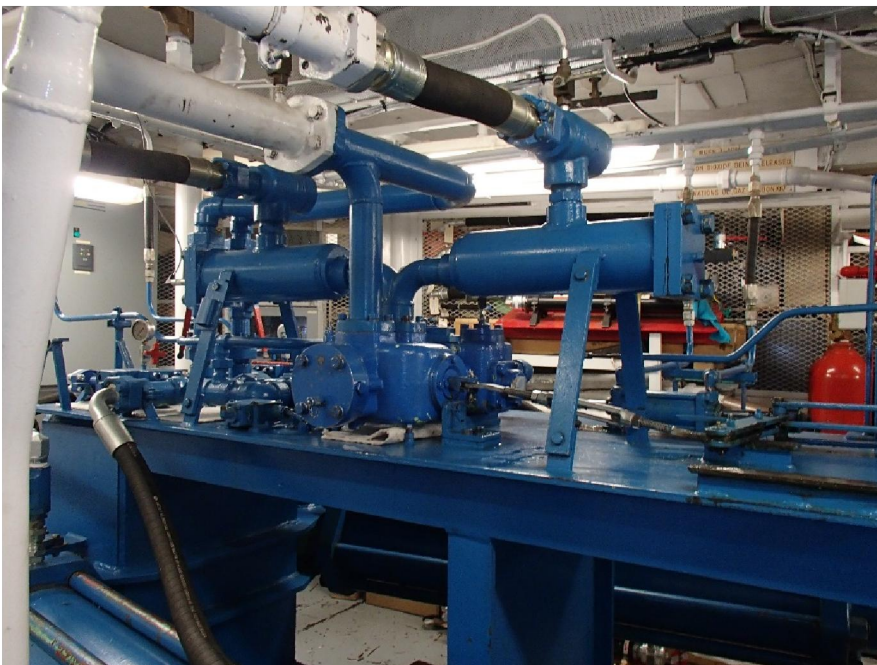


Photo no. 43 : Amundsen View from Stbd – Vue de tribord

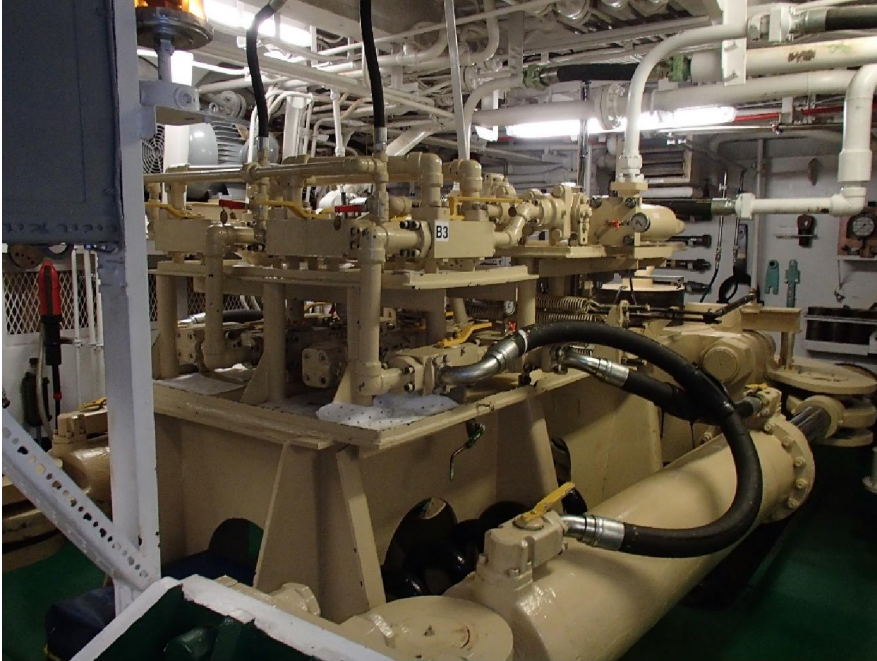


Photo no. 44 : Des Groseilliers Stbd Aft View – Vue arrière tribord

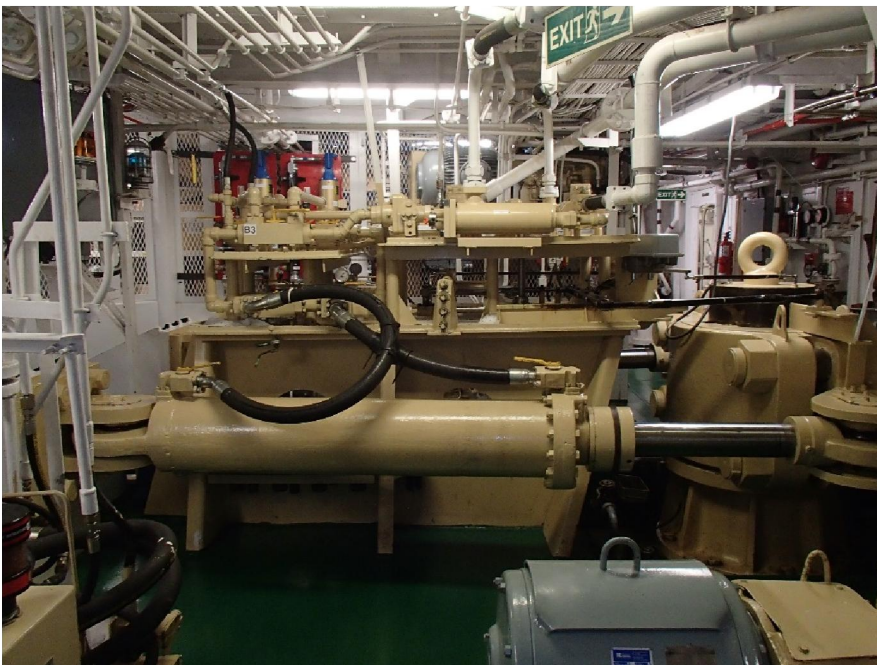


Photo no. 45 : Des Groseilliers Stbd View – Vue de tribord