

NATIONAL RESEARCH COUNCIL CANADA
SUSSEX DRIVE CAMPUS

BUILDING S-77
MASONRY CONSERVATION COURTYARD A

DRAWING LIST

COVER SHEET

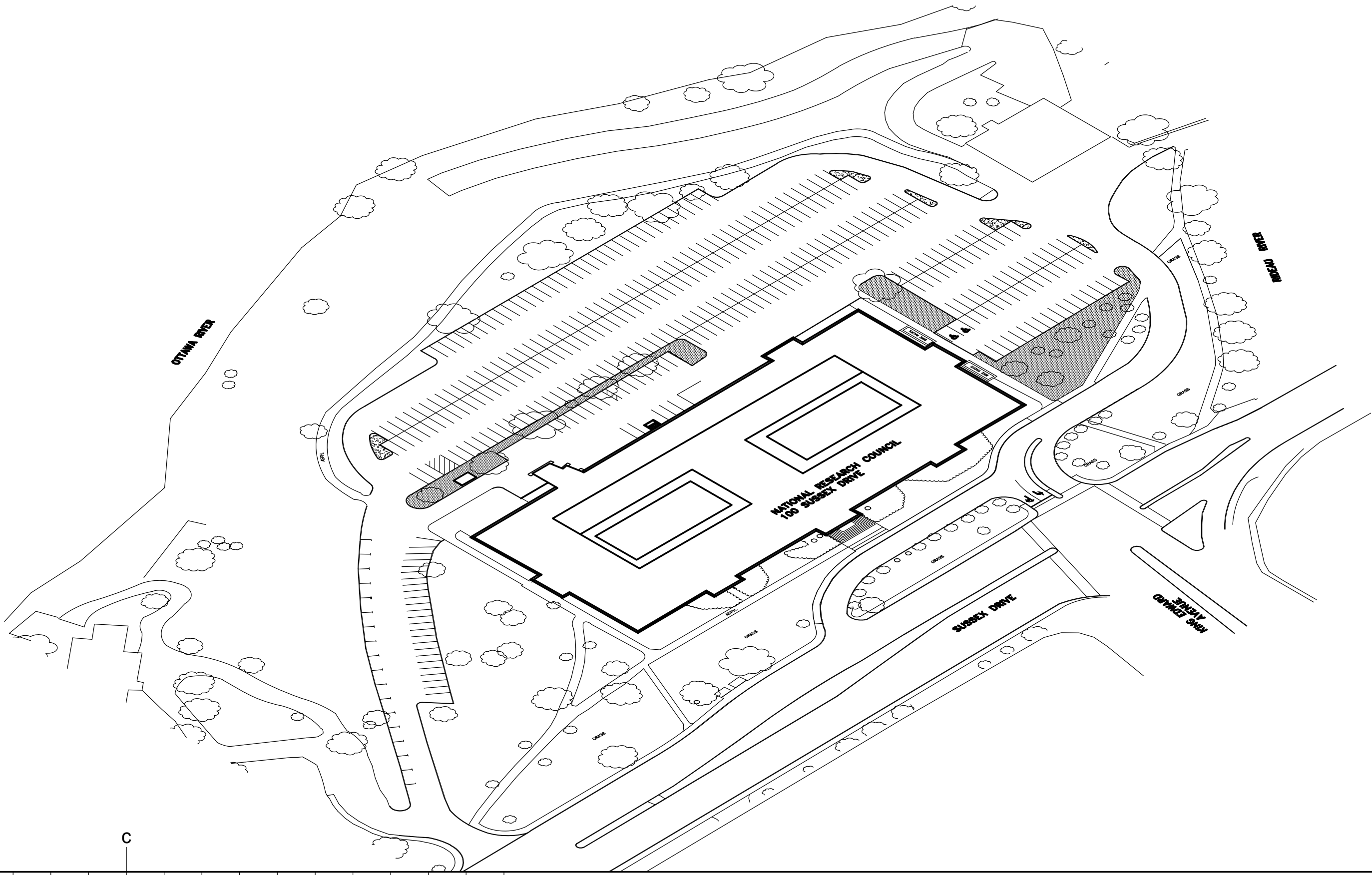
ARCHITECTURAL
BASEMENT PLAN
COURTYARD A ELEVATIONS, MORTAR JOINTS REPAIRING
COURTYARD A ELEVATIONS, STONE RESETTING
COURTYARD A ELEVATIONS, STONE PATCHING AND DESCALING
COURTYARD A ELEVATIONS, CAULKING REPLACEMENT, FLASHING
REPAIRS AND PAINTING
COURTYARD A SECTIONS DETAILS

DRAWING No.

4089-CS1

4089-A01
4089-A02
4089-A03
4089-A04

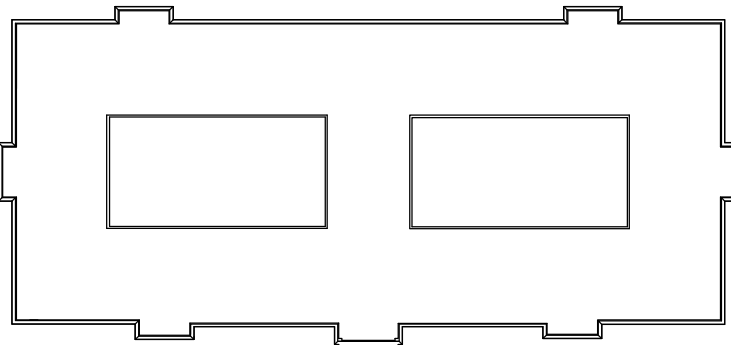
4089-A05
4089-A06



NC National Research Council Canada
Administrative Services and Property Management Branch
CMRC Conseil national de recherches Canada
Division des services administratifs et gestion de l'immobilier

NRC · CMRC

KEY PLAN



0	05/16	ISSUED FOR TENDER	MC
No.	Date	Revision	By: Par:

- Verify all dimensions and site conditions and be responsible for same
- Vérifier toutes les dimensions et l'état des lieux et en assumer la responsabilité

A	A Detail no. No. du détail	A
C	B Location drawing no. sur dessin no.	B C
	C Drawing no. dessin no.	

project
**S-77 MASONRY CONSERVATION
COURTYARD A**

100 SUSSEX DRIVE

drawing
COVER SHEET

designed congru date **MAY 2016** date

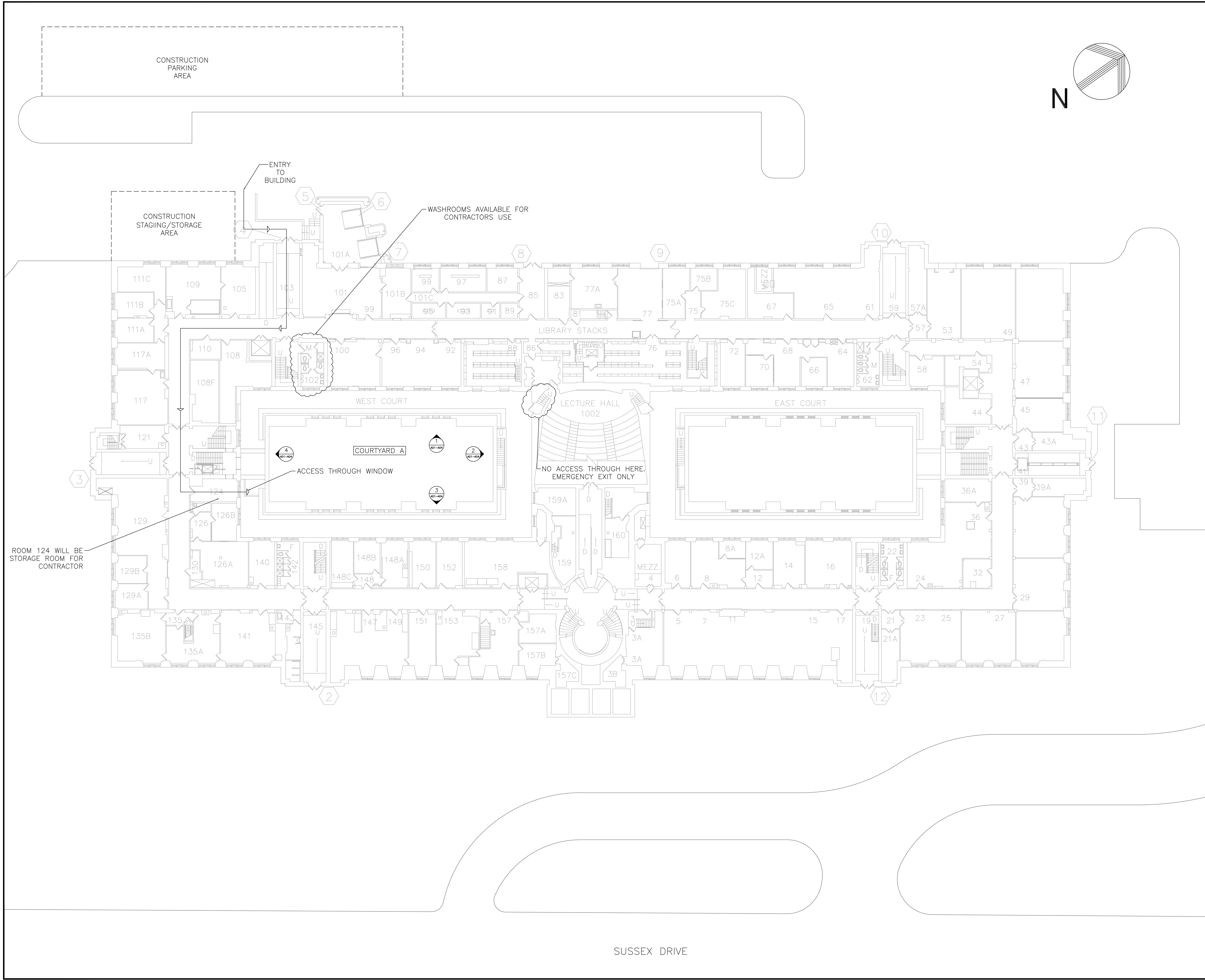
drawn dessiné scale **NTS** échelle

checked vérifié sheet of/de feuille

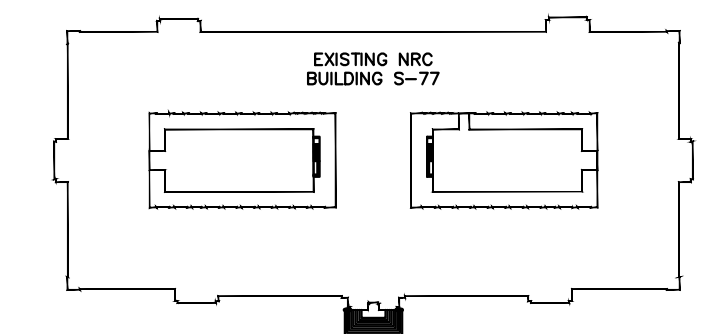
approved approuvé W.O.no. D.T.no.
A1-006434-01

dwg.no. dessin no.
4089-CS01

- NOTES
- CONTRACTOR MUST PROVIDE TEMPORARY CONSTRUCTION FENCING FOR EXTERIOR STAGING AND STORAGE AREA
 - CONTRACTOR MUST PROVIDE ANY/ ALL STORAGE AND DUMPSTER BINS INSIDE EXTERIOR STAGING AND STORAGE AREA
 - NO ACCESS IS PERMITTED THROUGH DOORS NEXT TO LECTURE HALL 1002. USE AS AN EMERGENCY EXIT DOOR ONLY
 - ACCESS TO COURTYARD 'A' THROUGH OPERABLE WINDOW. GENERAL CONTRACTOR TO PROVIDE TEMPORARY STAIRS. CONTRACTOR STILL RESPONSIBLE FOR ALL WORK RELATED TO THOSE WINDOWS
 - NO WORK IS BEING DONE TO THE MIDDLE BUILDINGS IN COURTYARD A CONTRACTOR IS RESPONSIBLE FOR CLEANING ENTRY PATHS FROM EXTERIOR STAGING AREA INTO ROOM 124, AND INSIDE THE COURTYARD. CLEANING TO BE DONE ON A REGULAR BASIS AND AT THE END OF THE PROJECT.
 - MAKE GOOD TO ANY BUILDING ELEMENTS DAMAGED DUE TO WORK BEING PERFORMED



KEY PLAN



DO	05/16	ISSUED FOR TENDER	MC
No.	Date	Revision	By: Prr

- Date Printed Date Imprimée
- Verify all dimensions and site conditions and be responsible for same
 - Vérifier toutes les dimensions et l'état des lieux et en assumer la responsabilité

A	A Detail no. No. du détail	A
B	B Location drawing no. sur dessin no.	B
C	C Drawing no. dessin no.	C

project
**S-77 MASONRY CONSERVATION
COURTYARD A**
project
100, SUSSEX DRIVE
drawing
BASEMENT PLAN
dessin

designed	conçu	date	MARCH 2016	date		4089-A01
drawn	dessiné	scale	NTS	échelle		
checked	MC	verified	A01	et/ou	A06	
approved	approuvé	W.O.no.	A1-006430-01	D.T.no.		
dwg.no.		dessin no.	4089-A01			

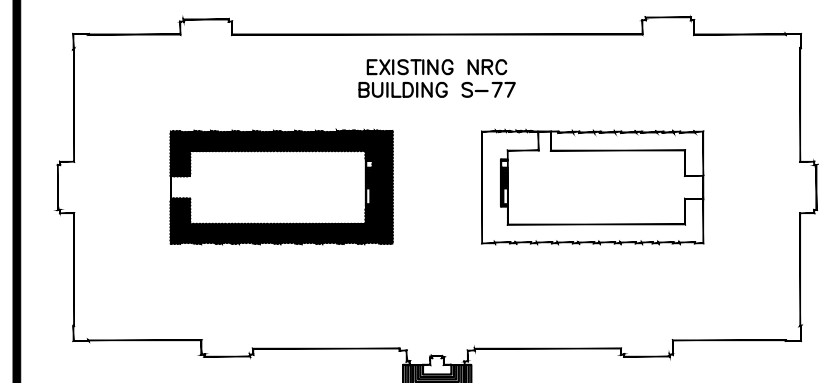
LEGEND

- 100% REPOINTING
- APPROX. 850'-0"
TOTAL REPOINTING FOR
ALL AREAS INDICATED

NOTES:

- ALL JOINTS IN 4TH LEVEL TO MAIN ROOF PARAPET WILL BE 100% REPOINTED
- REPOINT ALL JOINTS INSIDE CLOUD AREA. ASSUME 80% OF THE JOINTS WILL BE BACK POINTED
- TEST MORTAR JOINT PRIOR TO START-UP

KEY PLAN



00	05/16	ISSUED FOR TENDER	MC
No.	Date	Revision	By: PRR
Date Printed		Date Imprimée	

- Verify all dimensions and site conditions and be responsible for same
- Vérifier toutes les dimensions et l'état des lieux et en assumer la responsabilité

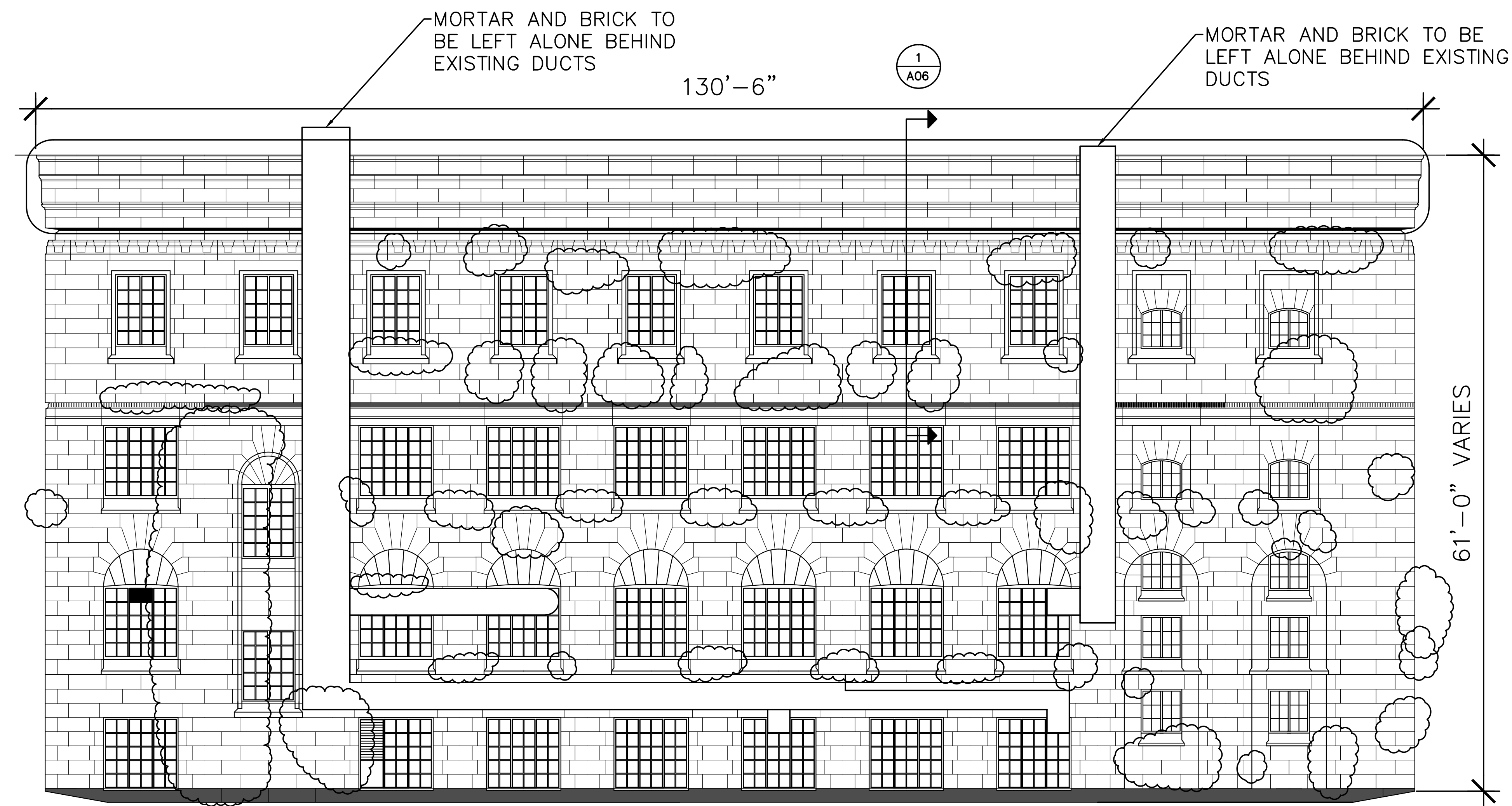
A	A Detail no. No. du détail	A
C	B Location drawing no. sur dessin no.	B C
	C Drawing no. dessin no.	

project
S-77 MASONRY CONSERVATION
COURTYARD A

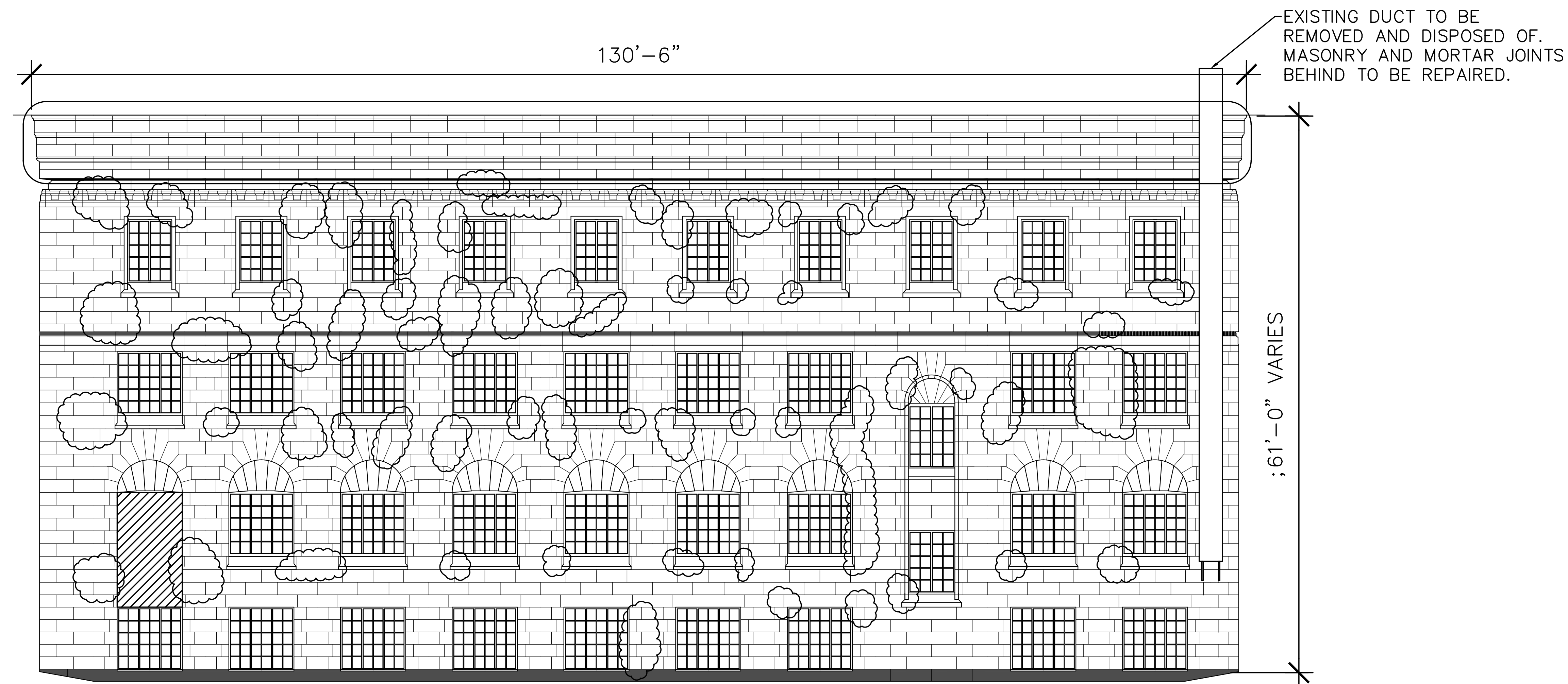
100 SUSSEX DRIVE, OTTAWA, ON

COURT A ELEVATIONS
MORTAR JOINTS REPAIRING

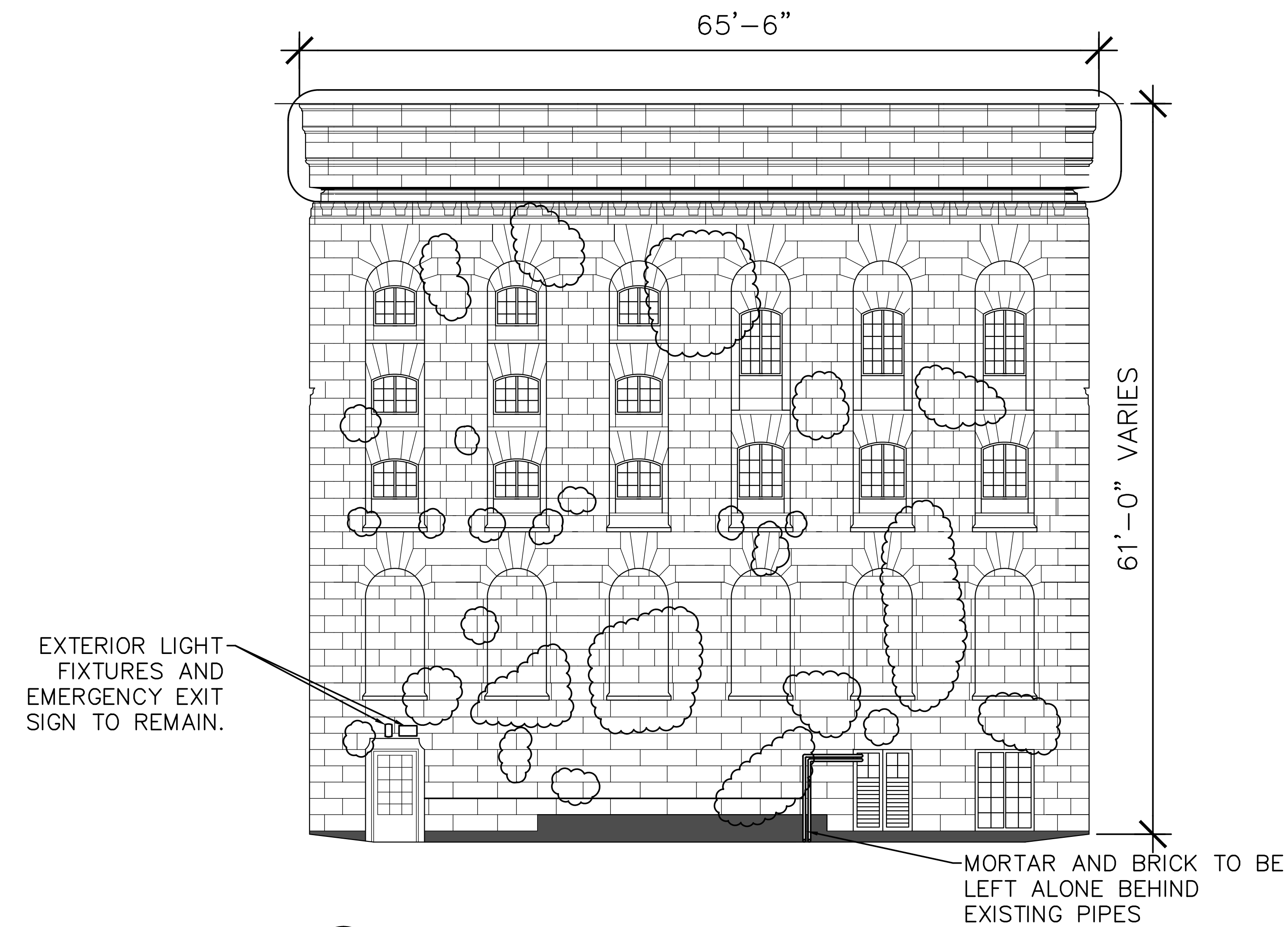
designed	conçu	date	MARCH 2016	4089-A02
drawn	dessiné	scale	1/8" = 1'-0"	
checked	MC	sheet	A02 of 4e A06	
approved	approuvé	W.O.no.	A1-006430-01	
dwg.no.	dessin no.			4089-A02



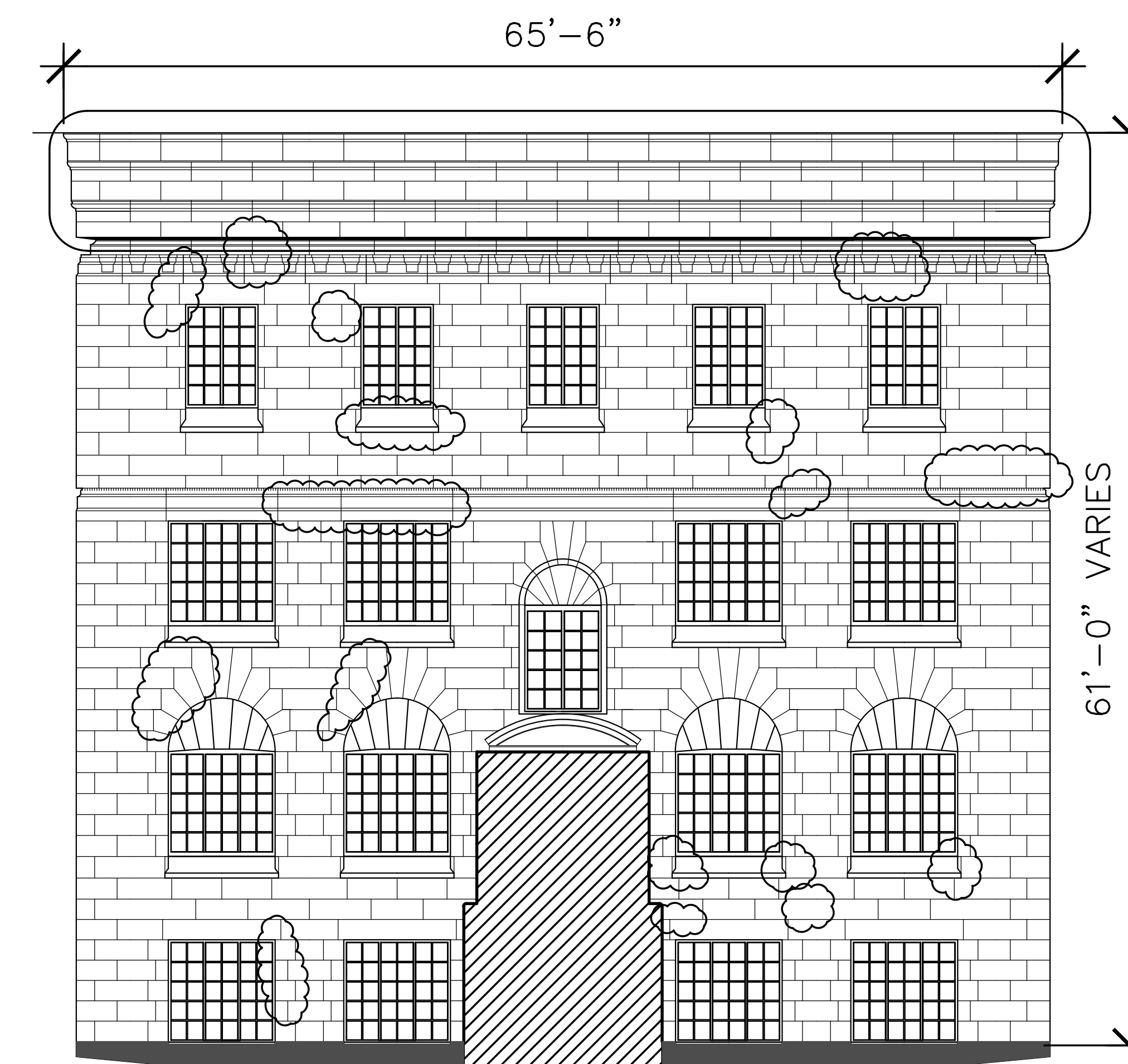
1 SOUTH ELEVATION
A02 1/8" = 1'-0"



3 NORTH ELEVATION
A02 1/8" = 1'-0"



2 EAST ELEVATION
A02 1/8" = 1'-0"



4 WEST ELEVATION
A02 1/8" = 1'-0"

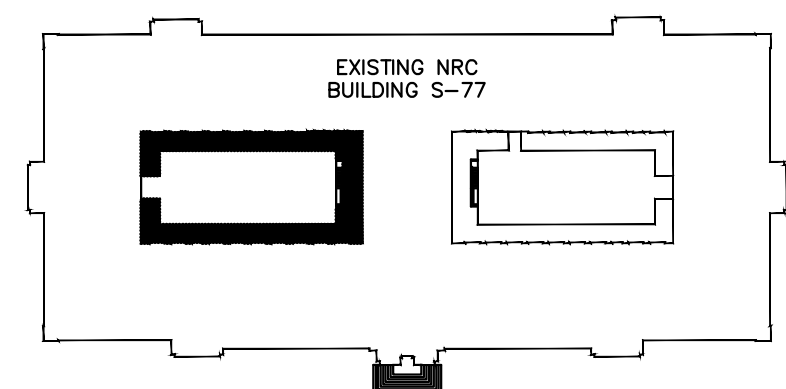
LEGEND

APPROX. 11 STONES TO
BE RESET IN EACH
INDICATED AREAS

NOTES:

- RESET ALL STONES IN EACH SECTION INDICATED.
- INSTALL NEW HELICAL TIES FOR ALL RESET STONES. SPACING FOR NEW TIES AS PER SECTION 04 05 19 MASONRY ANCHORAGE AND REINFORCING.
- SEE DETAIL 3/A06.

KEY PLAN



DO	05/16	ISSUED FOR TENDER	MC
No.	Date	Revision	By: Parr

Date Printed: Date Imprimée

- Verify all dimensions and site conditions and be responsible for same
- Vérifier toutes les dimensions et l'état des lieux et en assumer la responsabilité

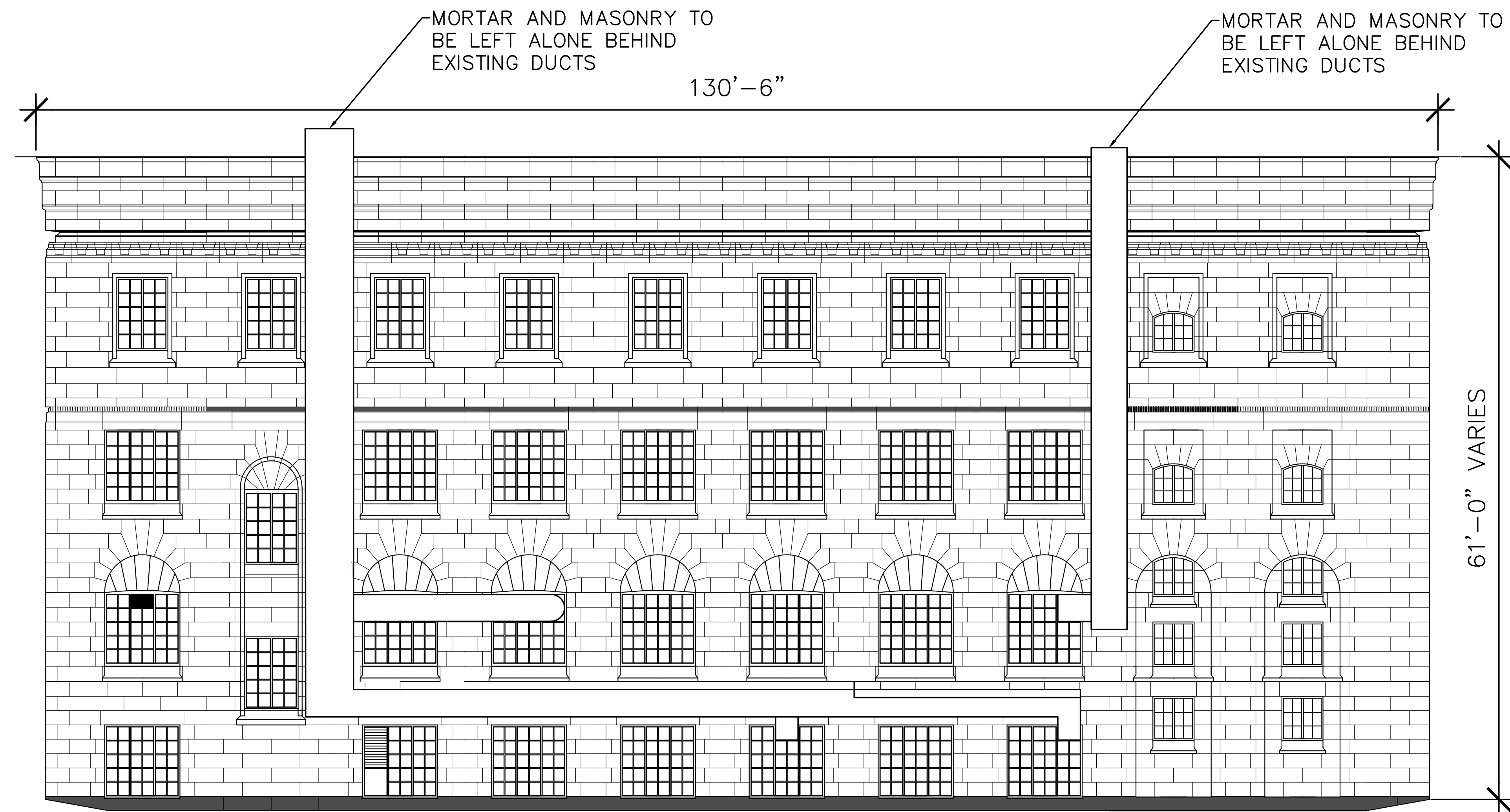
A	A Detail no. No. du détail	A
C	B Location drawing no. sur dessin no.	B C
	C Drawing no. dessin no.	

project: **S-77 MASONRY CONSERVATION** projet:
COURTYARD A

100 SUSSEX DRIVE, OTTAWA, ON

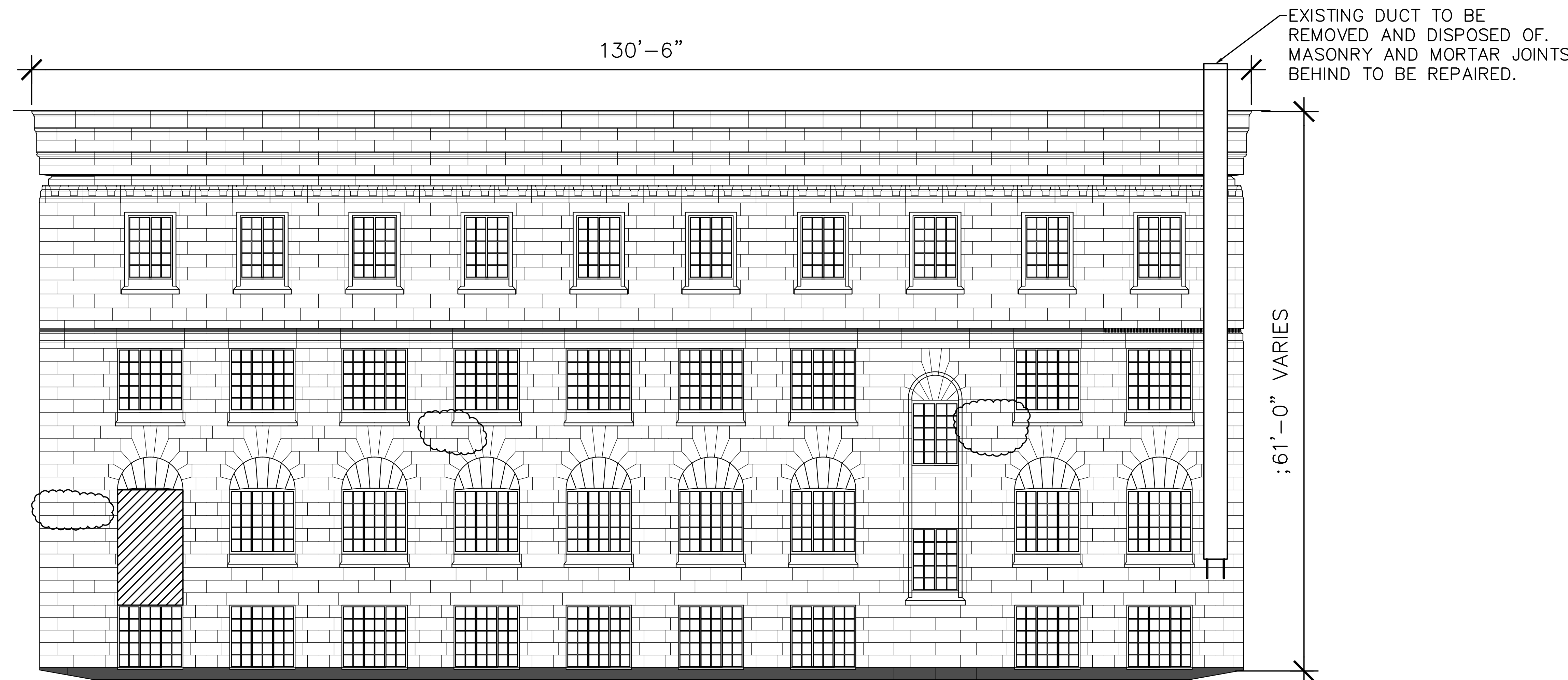
COURTYARD A ELEVATIONS
STONE RESETTING

designed	conçu	date	date	4089-A03
		MACH 2016		
drawn	dessiné	scale	échelle	
AW		1/8" = 1'-0"		
checked	MC	verified	sheet	feuille
			A03 of 4	A06
approved	approuvé	W.O.no.	D.T.no.	
		A1-006430-01		
dwg.no.		dessin no.		
4089-A03				



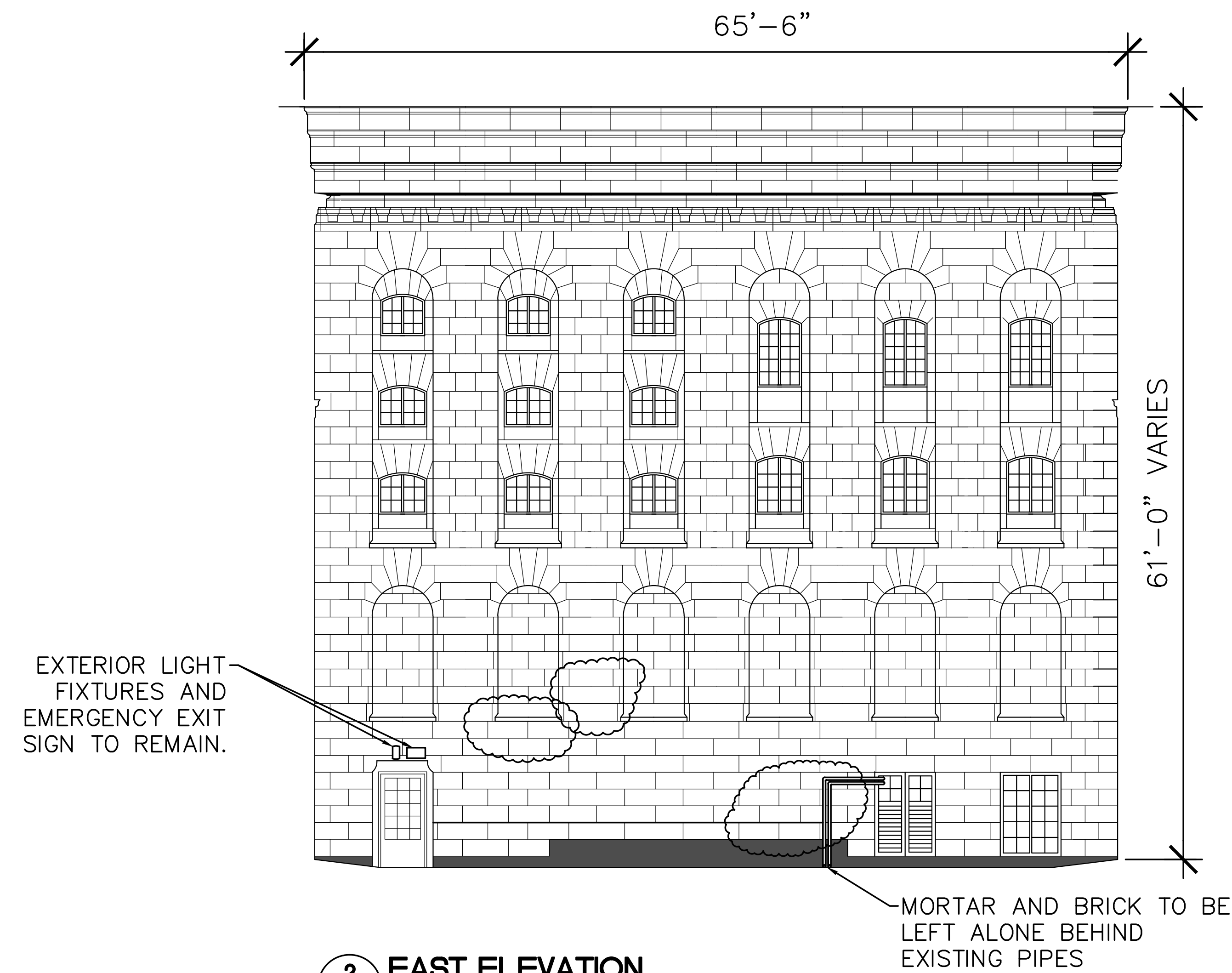
1 SOUTH ELEVATION

A03 1/8" = 1'-0"



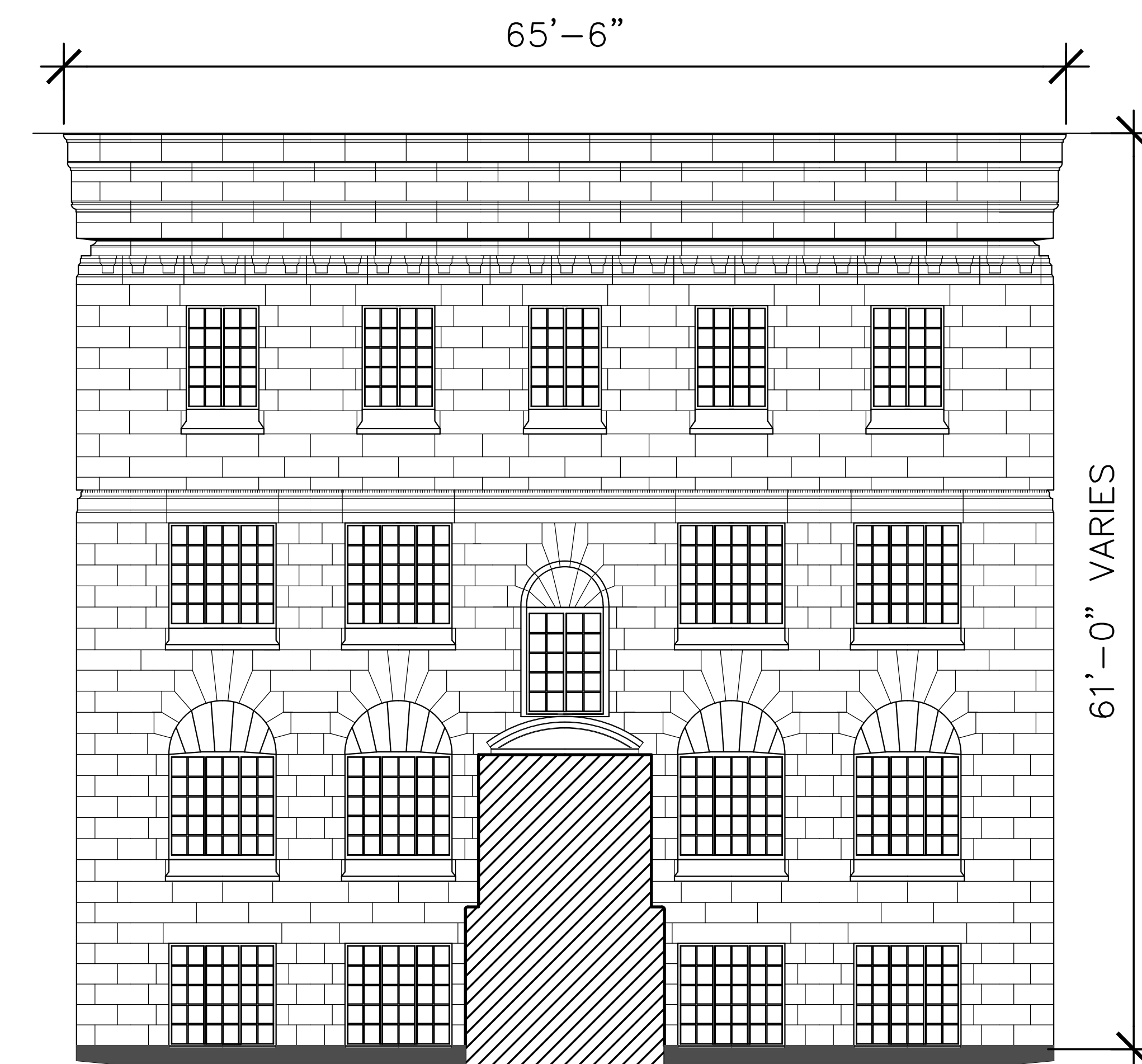
3 NORTH ELEVATION

A03 1/8" = 1'-0"



2 EAST ELEVATION

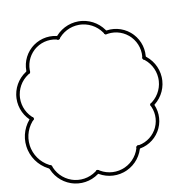
A03 1/8" = 1'-0"

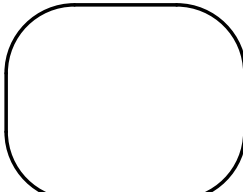


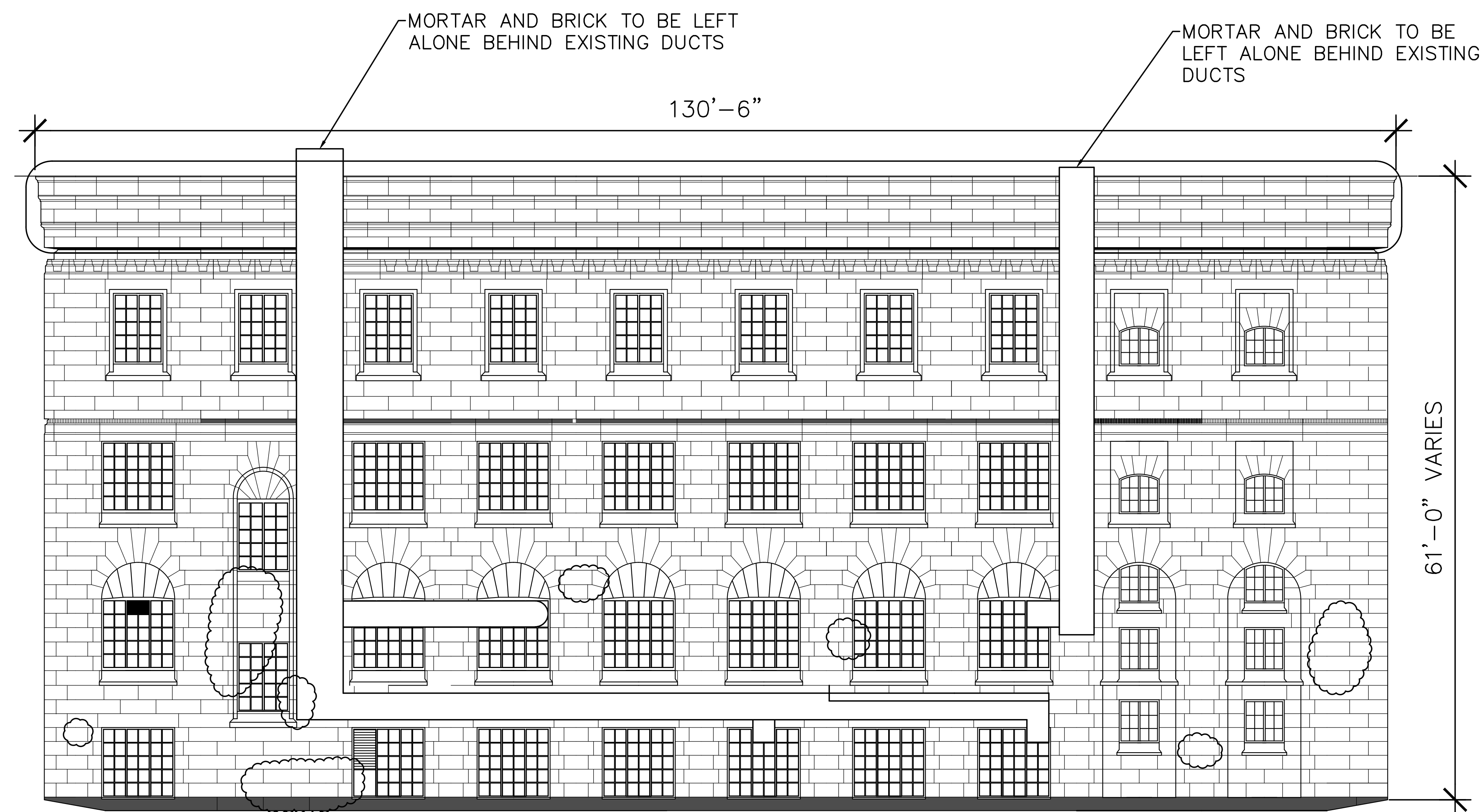
4 WEST ELEVATION

A03 1/8" = 1'-0"

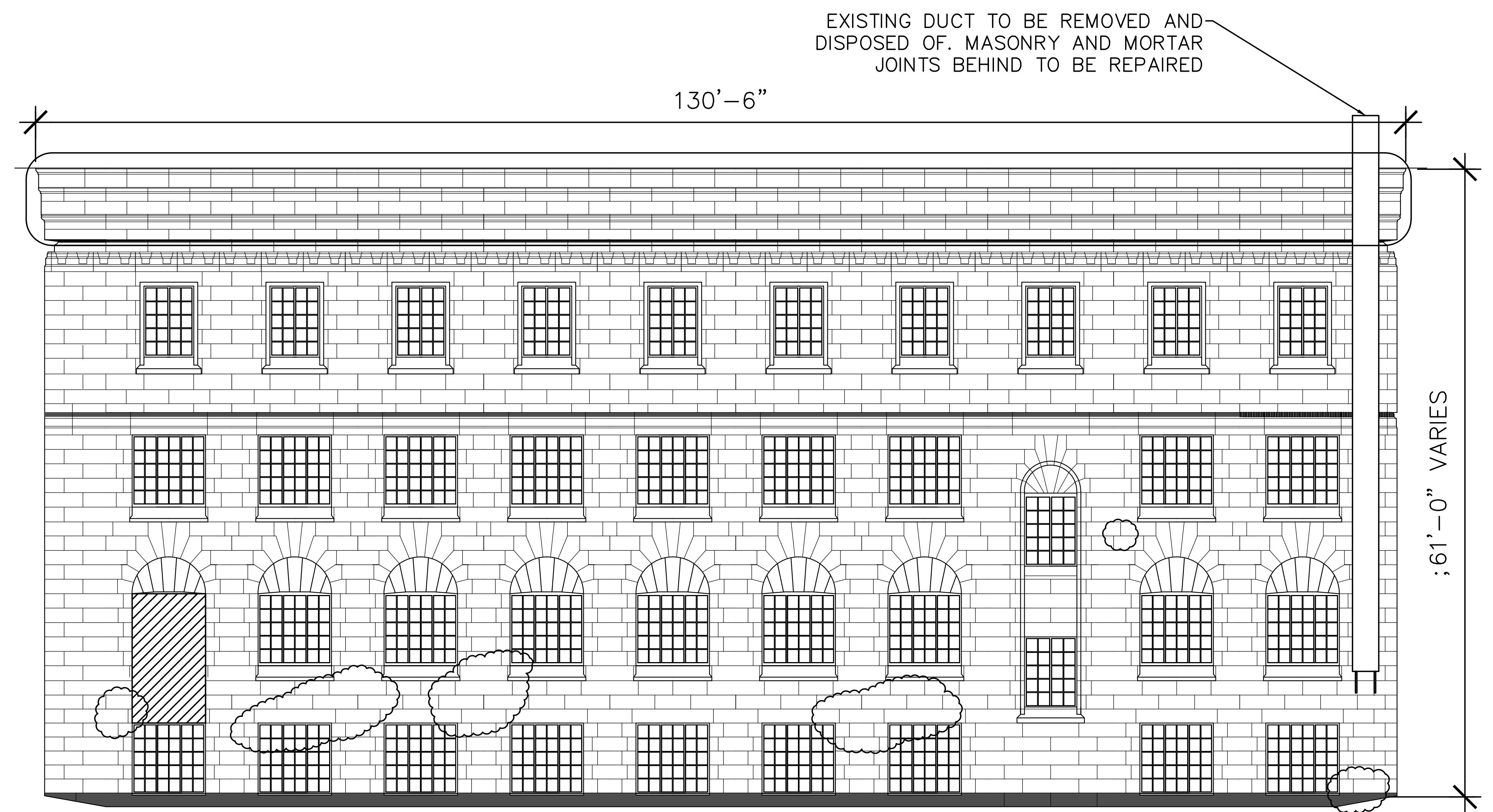
LEGEND

 APPROX. 50 SQ.FT.
OF PATCHING FOR ALL
AREAS INDICATED.

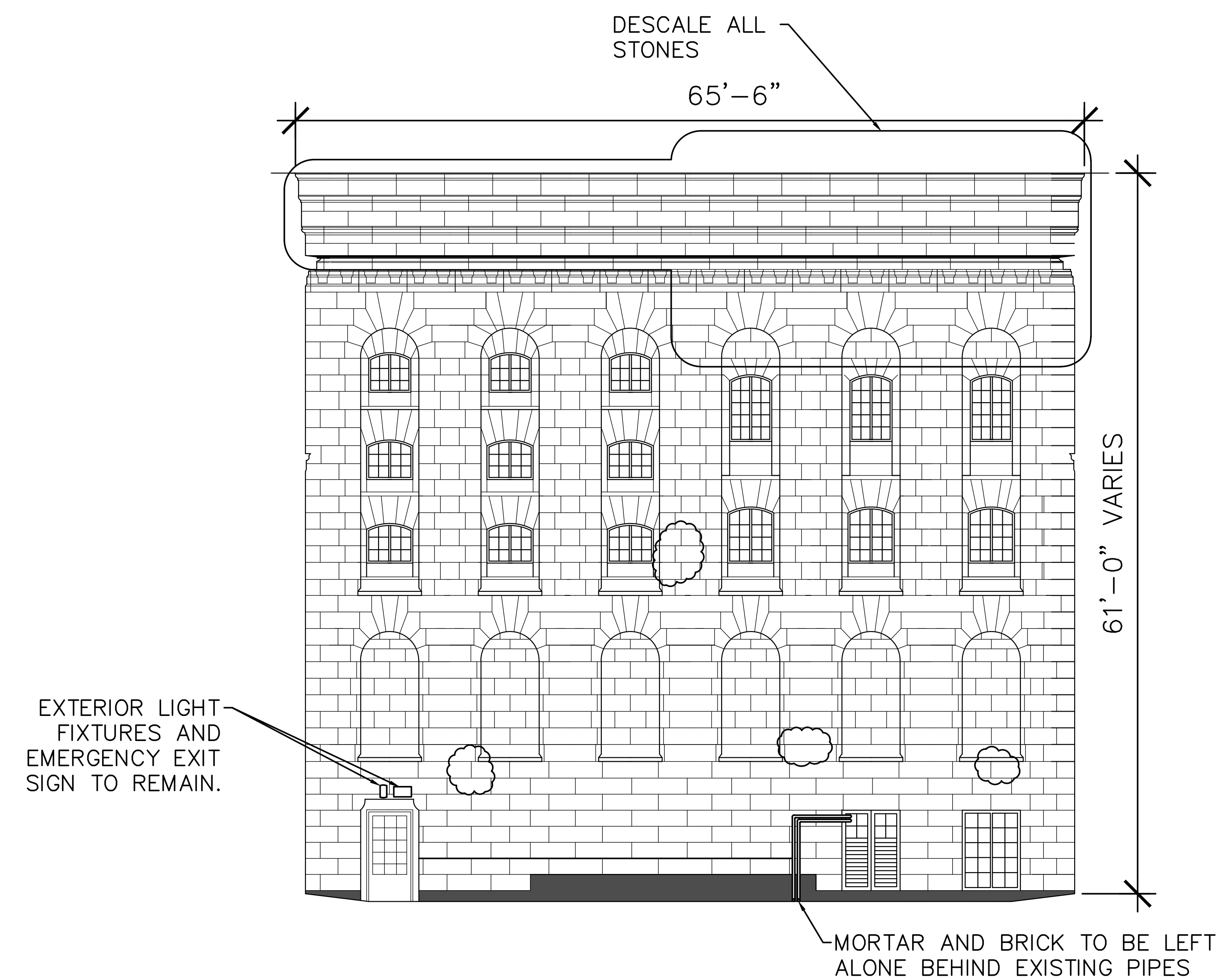
 DESCALE ALL
STONES IN
INDICATED AREAS



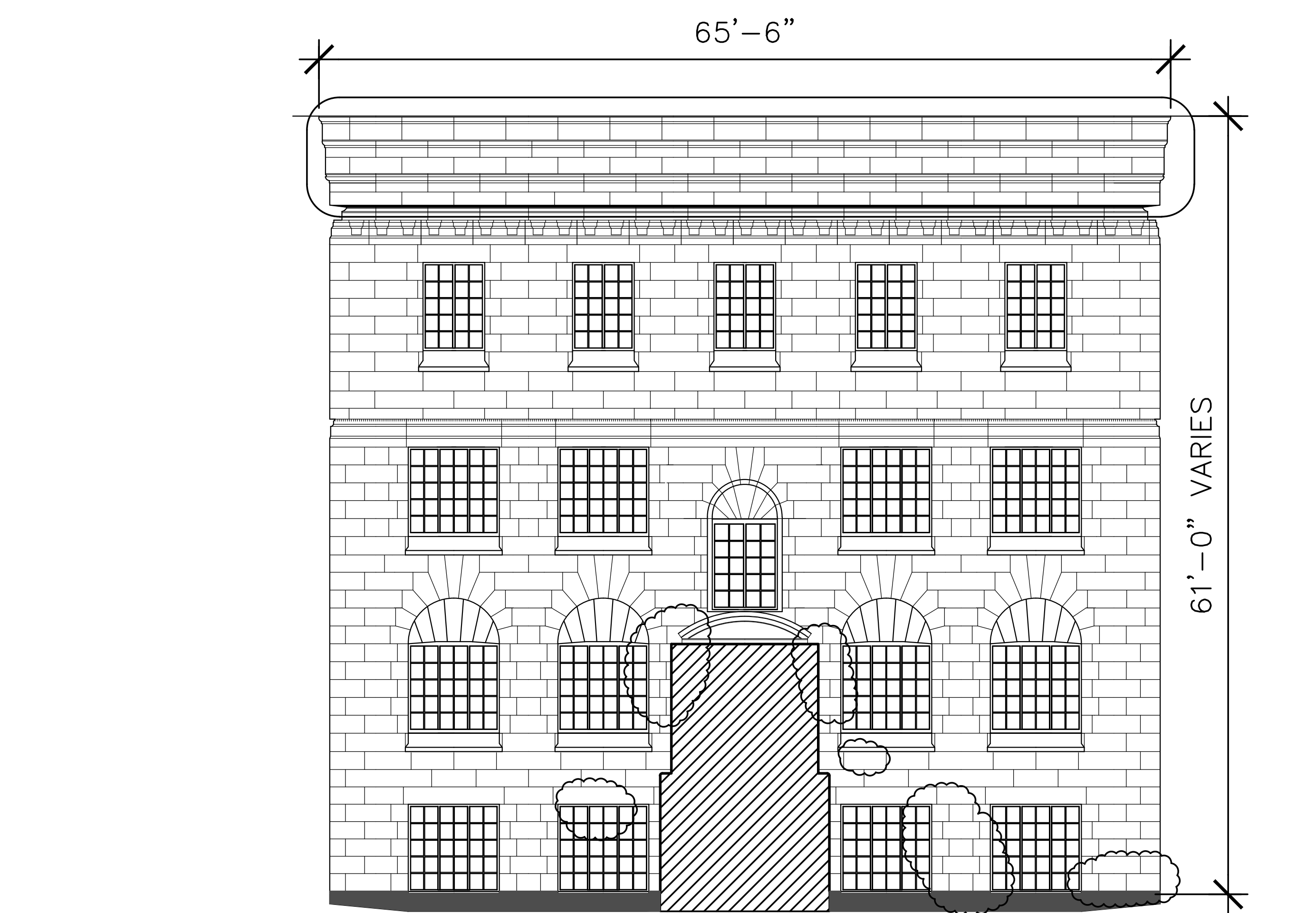
1 SOUTH ELEVATION
A04 1/8" = 1'-0"



3 NORTH ELEVATION
A04 1/8" = 1'-0"

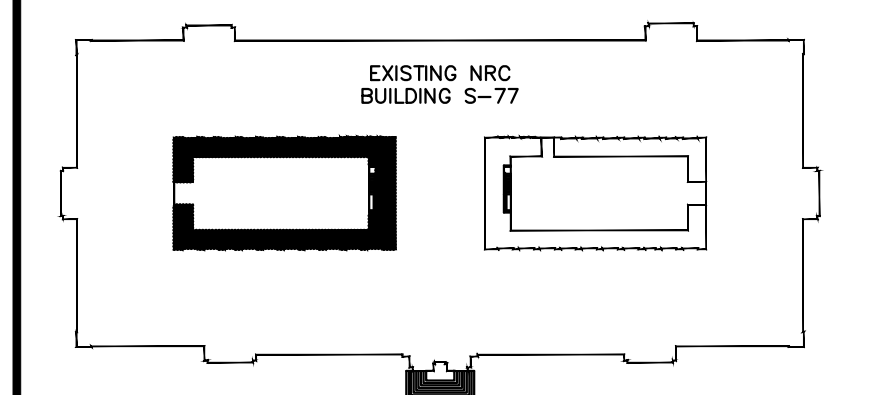


2 EAST ELEVATION
A04 1/8" = 1'-0"



4 WEST ELEVATION
A04 1/8" = 1'-0"

KEY PLAN



DO	05/16	ISSUED FOR TENDER	MC
No.	Date	Revision	By: Parn

Date Printed: Date Imprimée:

- Verify all dimensions and site conditions and be responsible for same
- Vérifier toutes les dimensions et l'état des lieux et en assumer la responsabilité

A	A Detail no. No. du détail	A
C	B Location drawing no. sur dessin no.	B C
	C Drawing no. dessin no.	

project: **S-77 MASONRY CONSERVATION COURTYARD A** projet:

100 SUSSEX DRIVE, OTTAWA, ON

drawing: **COURTYARD A ELEVATIONS** dessin:
STONE PATCHING
AND DESCALING

designed	conçu	date	date
			MARCH 2016
drawn	dessiné	scale	échelle
AW		1/8" = 1'-0"	
checked	vérifié	sheet	feuille
MC		A04 et/ou A06	
approved	approuvé	W.O.no.	D.T.no.
		A1-006430-01	
dwg.no.	dessin no.		
4089-A04			

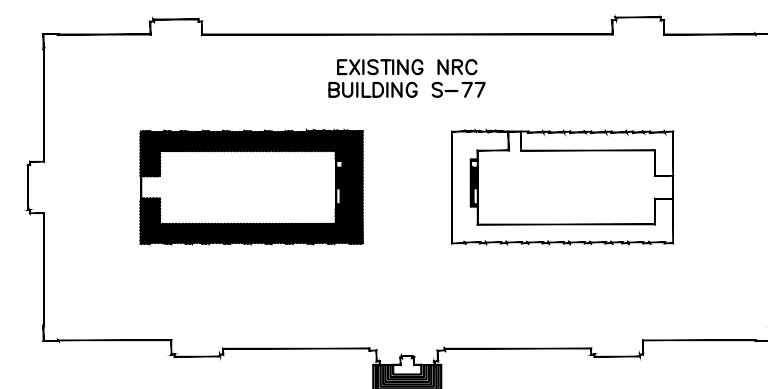
4089-A04

dessin no.

NOTES:

- INDIVIDUAL NOTES / ARROWS ON THIS DRAWINGS APPLIES TO ALL ELEMENTS ON ALL ELEVATIONS, UNLESS STATED OTHERWISE.
- REMOVE ALL EXISTING CAULKING AT AREAS INDICATED AND REPLACE WITH NEW.
- AFTER THE HORIZONTAL MORTAR JOINTS HAVE BEEN BACKPOINTED AND RAKED TO THE REQUIRED DEPTH FOR A CAULKING JOINT, APPLY SEALANT AT ALL HORIZONTAL MORTAR JOINTS ON THE MAIN ROOF PARAPET WALLS, AS INDICATED ON THE DRAWINGS AND IN ACCORDANCE WITH MANUFACTURER'S WRITTEN INSTRUCTIONS. EMBED SAND INTO CAULKING TO MATCH LOOK OF EXISTING MORTAR.
- IDENTIFY WINDOW AND DOOR GLASS UNITS THAT ARE BROKEN AND REQUIRE REPLACEMENT. NOTIFY DEPARTMENTAL REPRESENTATIVE AND OBTAIN APPROVAL BEFORE REPLACING WITH NEW. NEW GLAZING AND PUTTY SHALL BE AS PER SECTION 08 80 50 GLAZING.

KEY PLAN



DO	05/16	ISSUED FOR TENDER	MC
No.	Date	Revision	By: PRR

Date Printed: Date Imprimée:

- Verify all dimensions and site conditions and be responsible for same
- Vérifier toutes les dimensions et l'état des lieux et en assumer la responsabilité

A	A Detail no. No. du détail	A
B	B Location drawing no. sur dessin no.	B
C	C Drawing no. dessin no.	C

project: **S-77 MASONRY CONSERVATION COURTYARD A** projet:

100 SUSSEX DRIVE, OTTAWA, ON

drawing: **COURTYARD A ELEVATIONS CAULKING REPLACEMENT, FLASHING REPAIRS, AND PAINTING** dessin:

designed	conçu	date	MARCH 2016	4089-A05
drawn	dessiné	scale	1/8" = 1'-0"	
checked	vérifié	sheet	A05 of 44 A06	
approved	approuvé	W.O.no.	A1-006430-01	
dwg.no.	dessin no.		4089-A05	sheet no.



NRC · CNRC

AFTER HORIZONTAL MORTAR JOINTS HAVE BEEN BACKPOINTED AND RAKED TO REQUIRED DEPTH FOR A CAULKING JOINT, APPLY SEALANT AND BACKER ROD AT ALL HORIZONTAL MORTAR JOINTS ON THE MAIN ROOF PARAPET, AS INDICATED ON THE DRAWINGS, AND IN ACCORDANCE WITH MANUFACTURER'S WRITTEN INSTRUCTIONS.

- EMBED SAND INTO CAULKING TO MATCH LOOK OF EXISTING MORTAR JOINT.
- RESOLDER SPECIFIED COPPER FLASHING JOINTS. RESOLDER ALL LEAD FLASHING JOINTS. CLEAN AND APPLY NEW COAT OF PATINATION OIL OVER ALL LEAD FLASHING.
- REMOVE ALL FLASHING CAULKING AT ALL ELEMENTS, ON ALL ELEVATIONS IN COURTYARD A AND REPLACE WITH NEW.
- REMOVE ALL WINDOW, DOOR AND EXTERIOR PENETRATION CAULKING IN COURTYARDS A AND REPLACE WITH NEW.
- INSTALL NEW HELICAL TIE ANCHORS IN ALL RESET SANDSTONES, AS PER SECTION 04 05 19 MASONRY ANCHORAGE AND REINFORCEMENT.

[illegible]

Date Printed	Date imprimée
<ul style="list-style-type: none"> ● Verify all dimensions and site conditions and be responsible for same ● Vérifier toutes les dimensions et l'état des lieux et en assumer la responsabilité 	

project	project
S-77 MASONRY CONSERVATION COURTYARD A	
100 SUSSEX DRIVE, OTTAWA, ON	

designed	conçu	date	date
drawn	dessiné	MARCH 2016	
AW		scole	échelle
		NTS	
checked	vérifié	sheet	feuille
MC		A06 of de	A06
approved	approuvé	W.O.no.	D.T.no.
		A1-006430-01	
arg.no.		dessin no.	
4089-A06			

design no