

MECHANICAL DRAWING LIST / LISTE DES DESSINS MÉCANIQUE

DRAWING # DESSIN	DESCRIPTION / DESCRIPTION
M-1	MECHANICAL - DRAWING LIST, LEGENDS AND SCHEDULES / MÉCANIQUE : LISTE DES DESSINS, LÉGENDES ET DESCRIPTIONS.
M-2	MECHANICAL - GROUND FLOOR WORK / MÉCANIQUE : TRAVAUX DU REZ-DE-CHAUSSÉE
M-3	MECHANICAL - SECOND FLOOR WORK / MÉCANIQUE : TRAVAUX DU 2E ÉTAGE
M-4	MECHANICAL - THIRD FLOOR WORK / MÉCANIQUE : TRAVAUX DU 3E ÉTAGE

THESE DESIGN DOCUMENTS ARE PREPARED SOLELY FOR THE USE BY THE PARTY WITH WHOM THE DESIGN PROFESSIONAL HAS ENTERED INTO A CONTRACT AND THERE ARE NO REPRESENTATIONS OF ANY KIND MADE BY THE DESIGN PROFESSIONAL TO ANY PARTY WITH WHOM THE DESIGN PROFESSIONAL HAS NOT ENTERED INTO A CONTRACT.

THE PAPER COPY OF THE DRAWINGS ISSUED FOR BUILDING PERMIT AND/OR TENDER WILL TAKE PRECEDENCE OVER ELECTRONIC COPIES.

REMOVED AND/OR RELOCATED / À DÉMOLIR	EXISTING TO REMAIN / EXISTANT À CONSERVER	NEW / NOUVEAU	HVAC LEGEND / LÉGENDE CVCA
			VERTICAL SUPPLY AIR DUCT / CONDUIT D'ALIMENTATION VERTICAL
			VERTICAL RETURN OR EXHAUST AIR DUCT / CONDUIT DE RETOUR/ÉVACUATION VERTICAL
			SUPPLY AIR DUCT / CONDUIT D'ALIMENTATION
			RETURN OR EXHAUST DUCT / CONDUIT DE RETOUR OU D'ÉVACUATION
			INTERNAL ACOUSTIC DUCT LINING / ISOLATION ACOUSTIQUE À L'INTÉRIEUR DU CONDUIT
			BALANCING DAMPER / VOILET DE BALANCEMENT
			TURNING VANES / VANNES DE CHANGEMENT DE DIRECTION
			SQUARE TO ROUND TRANSITION / TRANSITION DE CONDUIT CARRÉ À ROND
			ACCESS DOOR / PORTE D'ACCÈS
			FLEXIBLE DUCT (MAX. 6' LENGTH) / CONDUIT FLEXIBLE (MAX. 6' LONG)
			VAV BOX NO ATTENUATOR / BOÎTE VAV SANS ATTÉNUATEUR
			VAV BOX WITH ATTENUATOR / BOÎTE VAV AVEC ATTÉNUATEUR
			LINEAR DIFFUSER / DIFFUSEUR LINÉAIRE
			SQUARE DIFFUSER / DIFFUSEUR CARRÉ
			DUCTED RETURN/EXHAUST GRILLE / GRILLE DE RETOUR/ÉVACUATION RACCORDEE AU CONDUIT
			EGGCRATE RETURN/EXHAUST GRILLE / GRILLE DE RETOUR/ÉVACUATION
			DOOR GRILLE / GRILLE DE PORTE
			FLEXIBLE CONNECTION / CONNECTION FLEXIBLE
			MOTOR OPERATED INSULATED EXTRUDED ALUMINUM DAMPER / PERSIENNE MOTORISÉE EN ALUMINIUM

REMOVED AND/OR RELOCATED / À DÉMOLIR	EXISTING TO REMAIN / EXISTANT À CONSERVER	NEW / NOUVEAU	CONTROLS LEGEND / LÉGENDE DES CONTRÔLES
			ROOM THERMOSTAT / THERMOSTAT DE PIÈCE
			HUMIDISTAT / DÉTECTEUR D'HUMIDITÉ
			TEMPERATURE SENSOR / DÉTECTEUR DE TEMPÉRATURE
			CONTROL WIRING/TUBING / FILAGE DE CONTRÔLE

REMOVED AND/OR RELOCATED / À DÉMOLIR	EXISTING TO REMAIN / EXISTANT À CONSERVER	NEW / NOUVEAU	PLUMBING LEGEND / LÉGENDE DE PLOMBERIE
			SANITARY PIPING ABOVE GRADE/FLOOR / TUYAUTERIE DE DRAINAGE SANITAIRE AU-DESSUS PLANCHER
			SANITARY PIPING BELOW GRADE/FLOOR / TUYAUTERIE DE DRAINAGE SANITAIRE SOUS PLANCHER
			SANITARY VENT PIPING / TUYAUTERIE DE VENTILATION
			DOMESTIC COLD WATER PIPING / TUYAUTERIE D'EAU FROIDE DOMESTIQUE
			DOMESTIC HOT WATER PIPING / TUYAUTERIE D'EAU CHAUDE DOMESTIQUE
			DOMESTIC HOT WATER RECIRCULATION PIPING / TUYAUTERIE DE RECIRCULATION D'EAU CHAUDE
			CLEAN OUT / REGARD DE NETTOYAGE
			DRAIN / DRAIN

REMOVED AND/OR RELOCATED / À DÉMOLIR	EXISTING TO REMAIN / EXISTANT À CONSERVER	NEW / NOUVEAU	VALVES&FITTINGS LEGEND / LÉGENDE DES VALVES
			GATE VALVE/VALVE D'ISOLATION
			ELBOW UP OR DOWN / COUDE VERS LE HAUT OU VERS LE BAS
			BRANCH CONNECTION BOTTOM OR TOP / CONNECTION SUR LE DESSUS/DESSOUS
			CAP/CAPUCHON

REMOVED AND/OR RELOCATED / À DÉMOLIR	EXISTING TO REMAIN / EXISTANT À CONSERVER	NEW / NOUVEAU	FIRE PROTECTION LEGEND / LÉGENDE PROTECTION INCENDIE
			PENDANT SPRINKLER HEAD / TÊTE DE GICLEUR PENDANTE
			FLUSH SPRINKLER HEAD / TÊTE DE GICLEUR ENCASTRÉE
			FIRE HOSE CABINET / BOYAU D'INCENDIE
			FIRE EXTINGUISHER / EXTINCTEUR

PLUMBING FIXTURE SCHEDULE

REF.	SUPPLY SIZE		WASTE SIZE	VENT SIZE	REMARKS
	DCW	DHW			
SK-1	1 1/2"	1 1/2"	3/4"	3/2"	SHALL BE KINDRED MODEL LBS6808 WITH AMERICAN STANDARD MODEL 7500.170 FAUCET / KINDRED MODÈLE LBS6808 AVEC ROBINET AMERICAN STANDARD MODÈLE 7500.170

FAN SCHEDULE / DESCRIPTION DES VENTILATEURS

REF./REF.	FUNCTION/FONCTION	LOCATION/LOCALISATION	CAPACITY/CAPACITÉ		ELEC/ELEC			REMARKS/COMMENTAIRES	
			FLOW/DÉBIT L/S	SP"WG/PS "H2O	AMP	VOLTS	PH.		
F-1	EXHAUST / ÉVACUATION	1326 - COPIER ROOM / SALLE PHOTOCOPIEUR	165	0.250	1050	2.5	120	1	CABINET FAN, TERMINATE AT EXTERIOR WALL WITH LOUVER. / VENTILATEUR CABINET AVEC SORTIE AU MUR EXTÉRIEUR ET VOILET.
F-2	EXHAUST / ÉVACUATION	1388 - COPIER ROOM / SALLE PHOTOCOPIEUR	94	0.250	1050	1	120	1	CABINET FAN, TERMINATE AT EXTERIOR WALL WITH LOUVER. / VENTILATEUR CABINET AVEC SORTIE AU MUR EXTÉRIEUR ET VOILET.
F-3	EXHAUST / ÉVACUATION	2340 - COPIER ROOM / SALLE PHOTOCOPIEUR	94	0.250	1050	1	120	1	CABINET FAN, TERMINATE AT EXTERIOR WALL WITH LOUVER. / VENTILATEUR CABINET AVEC SORTIE AU MUR EXTÉRIEUR ET VOILET.
F-4	EXHAUST / ÉVACUATION	3345 - COPIER ROOM / SALLE PHOTOCOPIEUR	94	0.250	1050	1	120	1	CABINET FAN, TERMINATE AT EXTERIOR WALL WITH LOUVER. / VENTILATEUR CABINET AVEC SORTIE AU MUR EXTÉRIEUR ET VOILET.

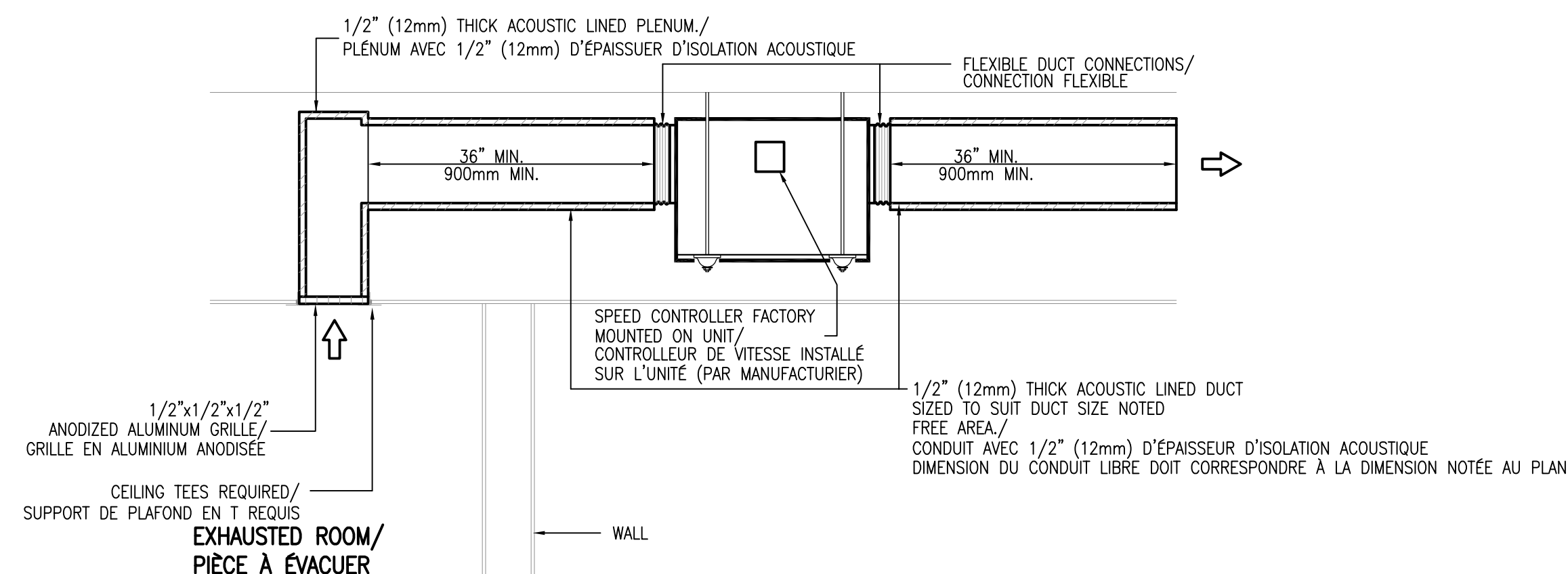
*ALL FANS TO BE CONTROLLED BY THE BUILDING AUTOMATION SYSTEM (SIEMENS), TO BE OPERATED ON A TIME OF DAY / DAY OF WEEK SCHEDULE.
*TOUS LES VENTILATEURS DOIVENT ÊTRE COMMANDÉS PAR LE SYSTÈME D'AUTOMATISATION DU BÂTIMENT (SIEMENS), ET DOIVENT FONCTIONNER SUR UN HORAIRE BASÉ SUR L'HEURE DE LA JOURNÉE/JOUR DE LA SEMAINE.

GRILLE&DIFFUSER SCHEDULE/DESCRIPTION GRILLES&DIFFUSEURS

REF./REF.	FUNCTION/FONCTION	DIRECTION/DIRECTION	FRAME OR BORDER / BORDURE	SIZE/DIMENSIONS	COLOR/COULEUR	REMARKS/COMMENTAIRES
A	RETURN / RETOUR	N/A	T-BAR	-	WHITE/BLANC	600x300 EGGCRATE GRILLE/GRILLE DE RETOUR 600x300 DE TYPE "EGGCRATE"
B	SUPPLY/ALIMENTATION	4-WAY/4 VOIES	T-BAR	200#	WHITE/BLANC	600x600 SQUARE DIFFUSER/DIFFUSEUR A PLAQUE 600x600
C	SUPPLY/ALIMENTATION	4-WAY/4 VOIES	T-BAR	200#	WHITE/BLANC	300x300 SQUARE DIFFUSER/DIFFUSEUR A PLAQUE 600x600
D	EXHAUST/ÉVACUATION	N/A	-	-	ALUMINIUM/ALUMINIUM	350x450 EXTRUDED ALUMINIUM STATIONARY LOUVER, 102 DEEP, DRAINABLE BLADE/PERSIENNE FIXE EN ALUMINIUM, DIMENSIONS : 350x450, PROFONDEUR 102 AVEC LAME DRAINABLE.

VAV BOX SCHEDULE/DESCRIPTION BOITES VAV

REF./REF.	SIZE/DIMENSION	AIR FLOW/DÉBIT AIR		OUTLET SIZE/DIMENSION SORTIE	REMARKS/COMMENTAIRES
		MAX (L/S)	MIN (L/S)		
VAV-01	6	74	20	10"x10"	EQUAL TO NAILOR SERIES 3000 / NAILOR SERIE 3000 OU EQUIVALENT



1
M-1
TRANSFER FAN INSTALLATION DETAIL / DÉTAIL D'INSTALLATION DU VENTILATEUR
N.T.S.

REVISION No.	DESCRIPTION	DATE
3.	ISSUED FOR TENDER / ÉMIS POUR SOUMISSION	FEB 01/16
2.	ISSUED FOR 99% REVIEW / ÉMIS POUR 99% RÉVISION	JAN 18/16
1.	ISSUED FOR 66% REVIEW / ÉMIS POUR 66% RÉVISION	DEC 21/15

MCKEE ENGINEERING
R.J. MCKEE ENGINEERING LTD.
1785 Woodward Drive
Ottawa, ON K2C 0P9
CANADA
Tel: (613) 723-9585
Fax: (613) 723-9584
www.mckeeottawa.ca

PROJECT:
HEALTH CANADA/SANTÉ CANADA
LCDC/LLCM
AMENITIES PROJECT
100 EGLANTINE DRIVEWAY
OTTAWA, ON

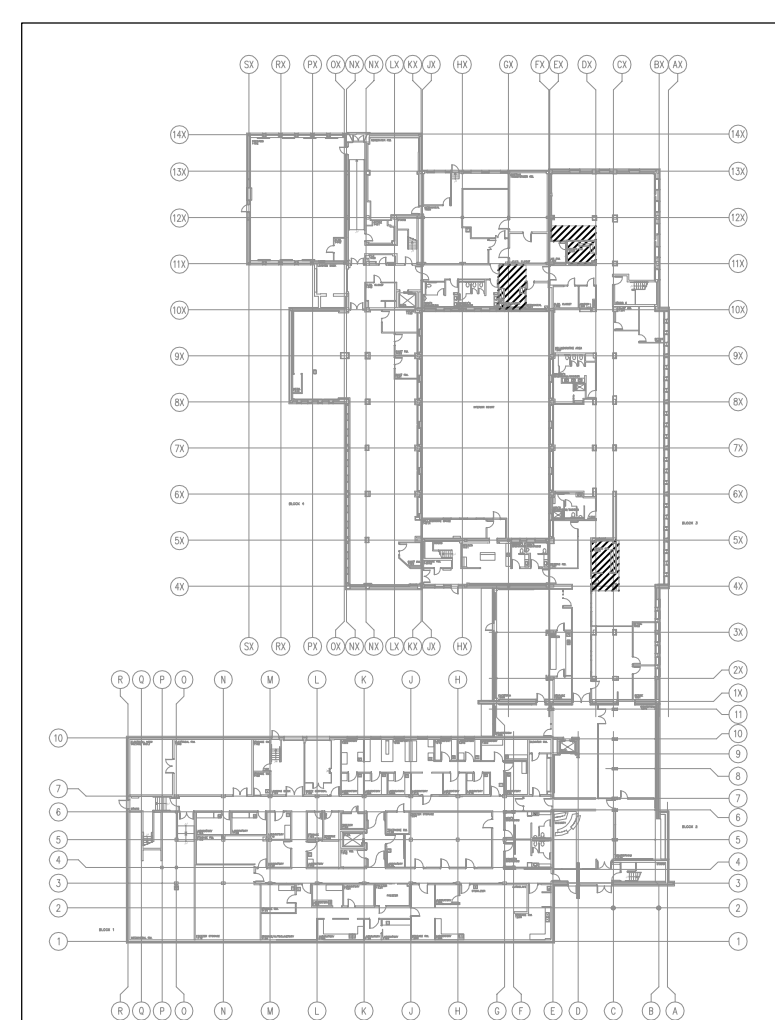
DRAWING:
MECHANICAL:
DRAWING LIST, LEGENDS AND SCHEDULES / LISTE DES DESSINS LÉGENDES ET DESCRIPTIONS

DATE:	DEC 2015
DESIGNED BY:	M.L.
DRAWN BY:	M.L.
CHECKED BY:	S.C.
SCALE:	N.T.S.

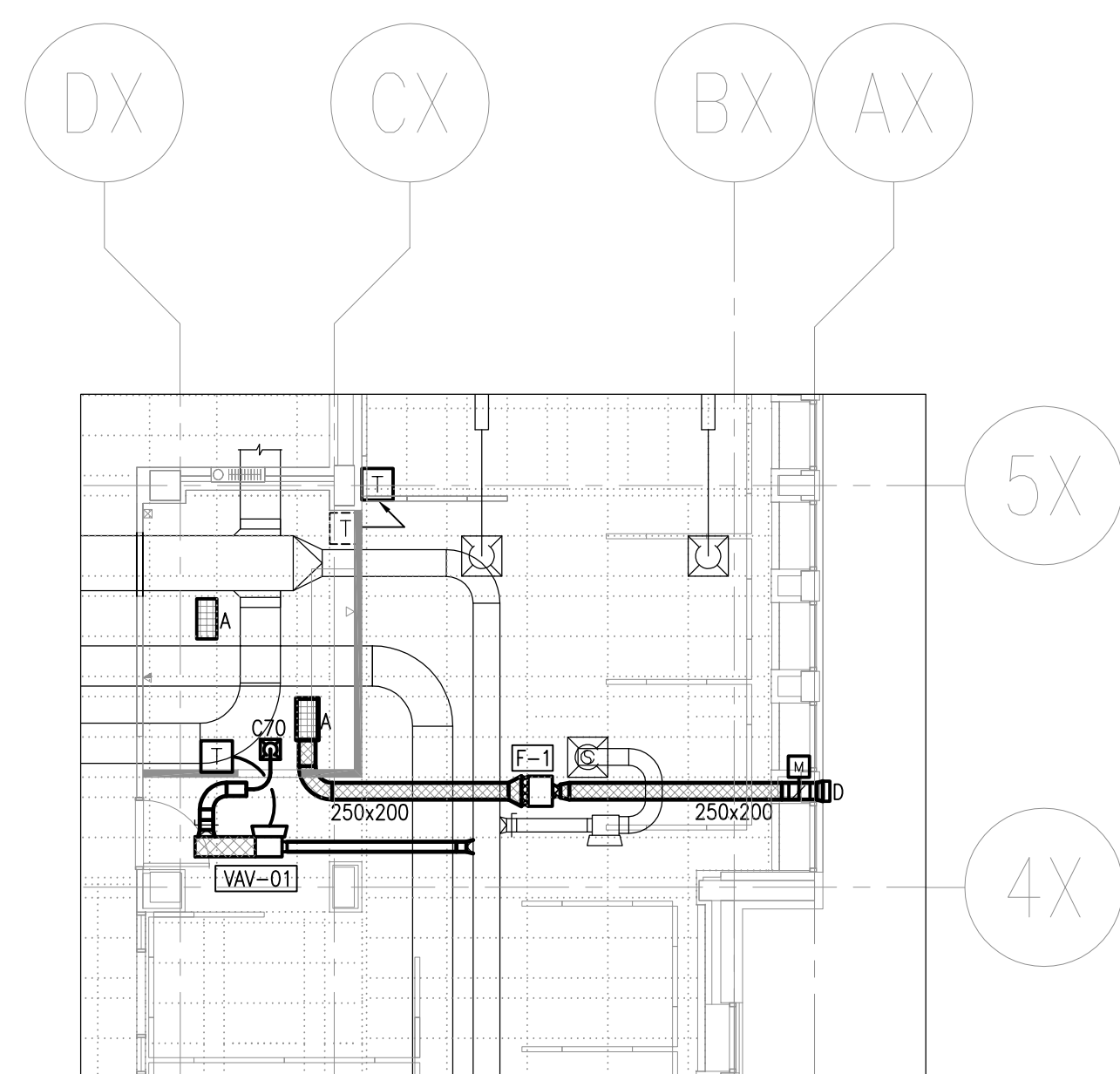
No. DWGS. 4	DRAWING No.
PROJECT No.	16026
	M-1

THESE DESIGN DOCUMENTS ARE PREPARED SOLELY FOR THE USE BY THE PARTY WITH WHOM THE DESIGN PROFESSIONAL HAS ENTERED INTO A CONTRACT AND THERE ARE NO REPRESENTATIONS OF ANY KIND MADE BY THE DESIGN PROFESSIONAL TO ANY PARTY WITH WHOM THE DESIGN PROFESSIONAL HAS NOT ENTERED INTO A CONTRACT.

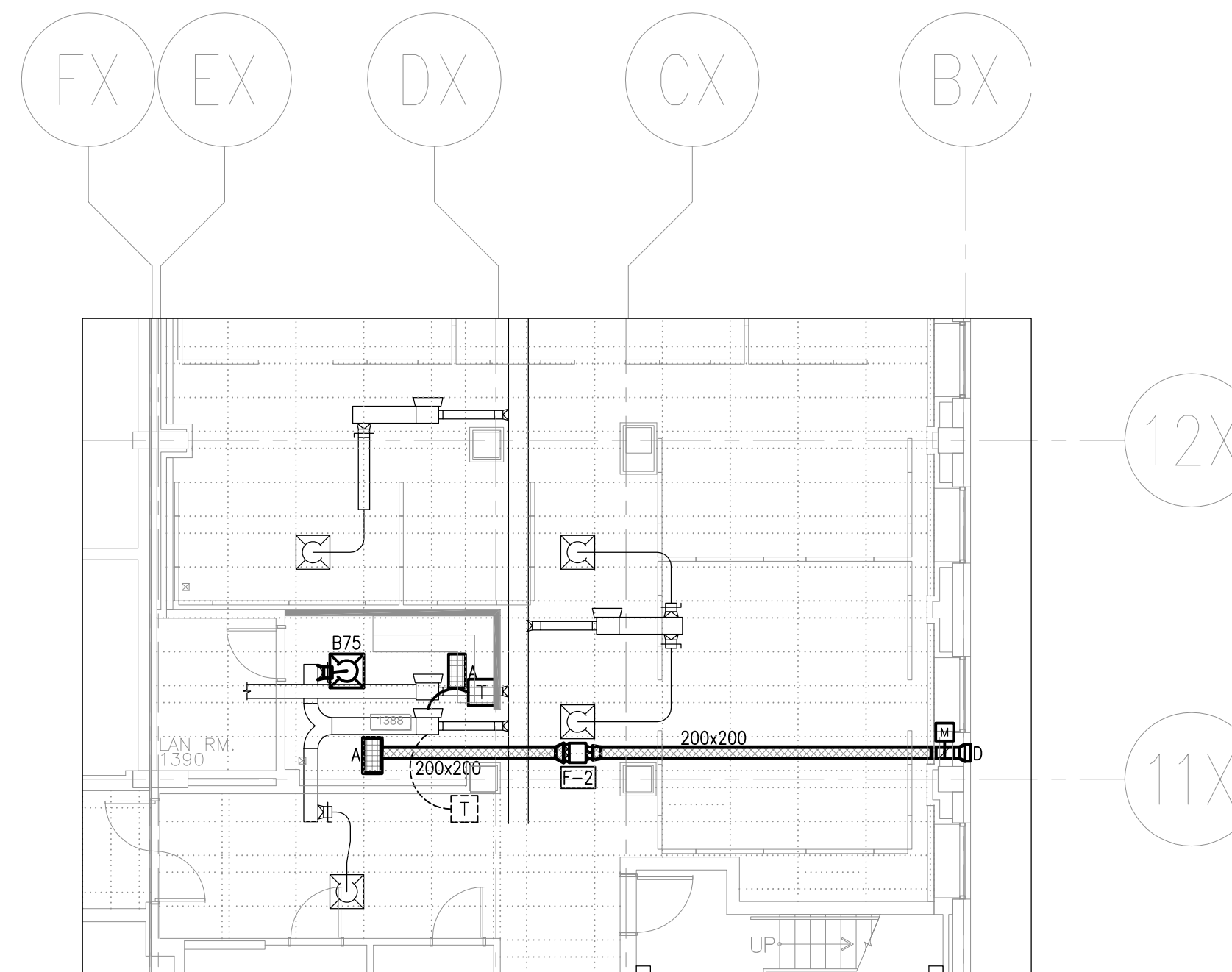
THE PAPER COPY OF THE DRAWINGS ISSUED FOR BUILDING PERMIT AND/OR TENDER WILL TAKE PRECEDENCE OVER ELECTRONIC COPIES.



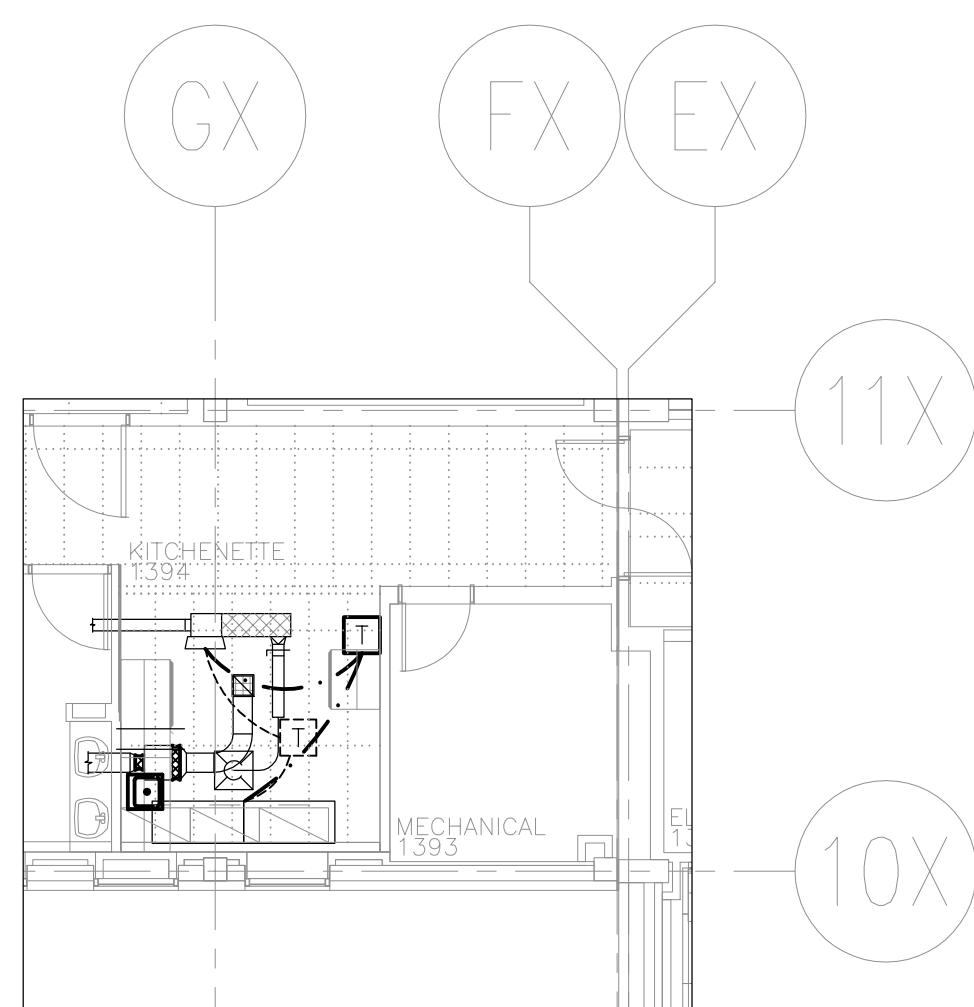
1 GROUND FLOOR AREAS OF WORK
M-2 ZONES DE TRAVAUX DU REZ-DE-CHAUSSÉE
N.T.S.



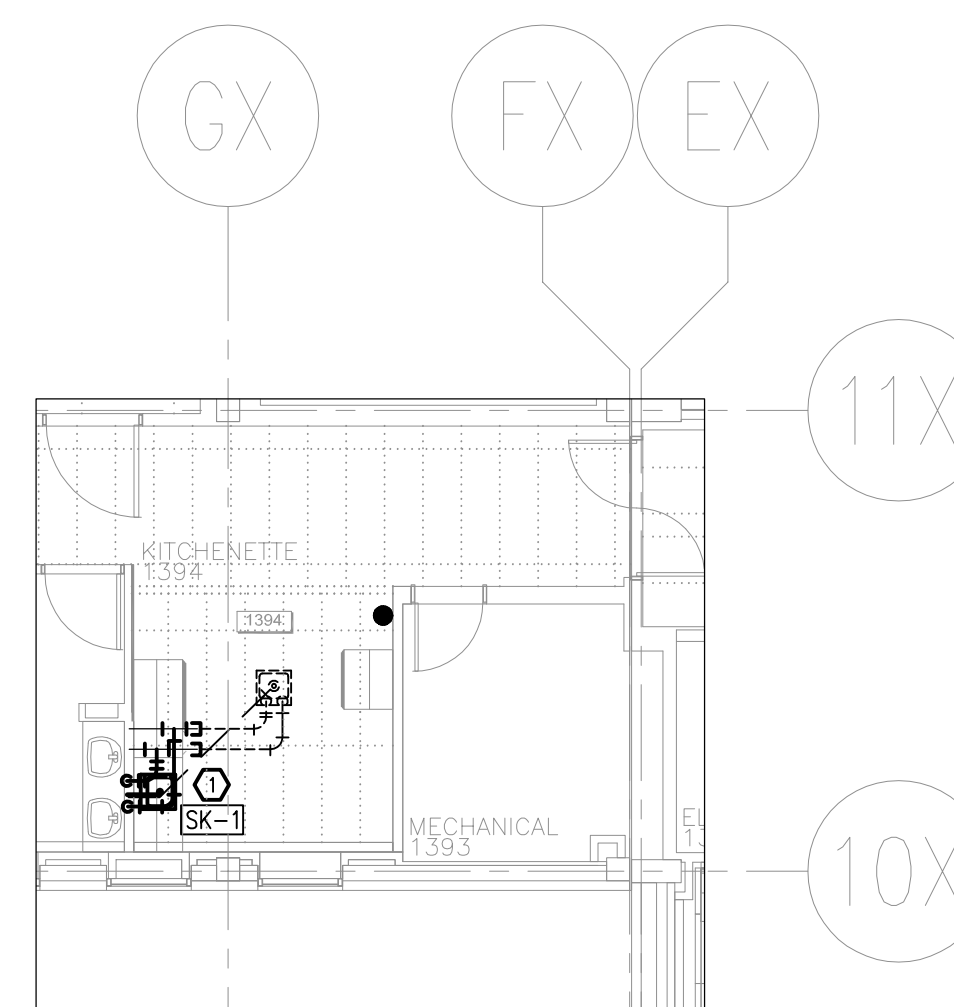
2 GROUND FLOOR PARTIAL HVAC
M-2 CVCA PARTIEL DU REZ-DE-CHAUSSÉE
1:100



3 GROUND FLOOR PARTIAL HVAC
M-2 CVCA PARTIEL DU REZ-DE-CHAUSSÉE
1:100



4 GROUND FLOOR PARTIAL HVAC
M-2 CVCA PARTIEL DU REZ-DE-CHAUSSÉE
1:100



5 GROUND FLOOR PARTIAL PLUMBING/
M-2 PLOMBERIE PARTIEL DU REZ-DE-CHAUSSÉE
1:100

DRAWING NOTES/NOTES AU PLAN

- Ⓢ REMOVE AND DISPOSE OF EXISTING SINK AND FAUCET. CUT BACK DOMESTIC COLD WATER, DOMESTIC HOT WATER AND SANITARY PIPING FROM EXISTING SINK. MODIFY PIPING AS REQUIRED TO CONNECT SERVICES TO NEW SINK AND FAUCET.
- RETRIER ÉVIER ET ROBINET EXISTANT ET REMPLACER AVEC UN NOUVEL ÉVIER. MODIFIER LA TUYAUTERIE D'EAU FROIDE DOMESTIQUE, D'EAU CHAUDE DOMESTIQUE ET DE DRAINAGE SANITAIRE TEL QUE REQUIS POUR LA CONNECTION DES NOUVEAUX APPAREILS.

REVISION No.	DESCRIPTION	DATE
3.	ISSUED FOR TENDER / ÉMIS POUR SOUMISSION	FEB 01/16
2.	ISSUED FOR 99% REVIEW / ÉMIS POUR 99% RÉVISION	JAN 18/16
1.	ISSUED FOR 66% REVIEW / ÉMIS POUR 66% RÉVISION	DEC 21/15

MCKEE ENGINEERING
R.J. MCKEE ENGINEERING LTD.
1785 Woodward Drive
Ottawa, ON K2C 0P9
CANADA
Tel: (613) 723-9585
Fax: (613) 723-9584
www.mckeeottawa.ca

PROJECT:
HEALTH CANADA/SANTÉ CANADA
LCDC/LLCM
AMENITIES PROJECT
100 EGLANTINE DRIVEWAY
OTTAWA, ON

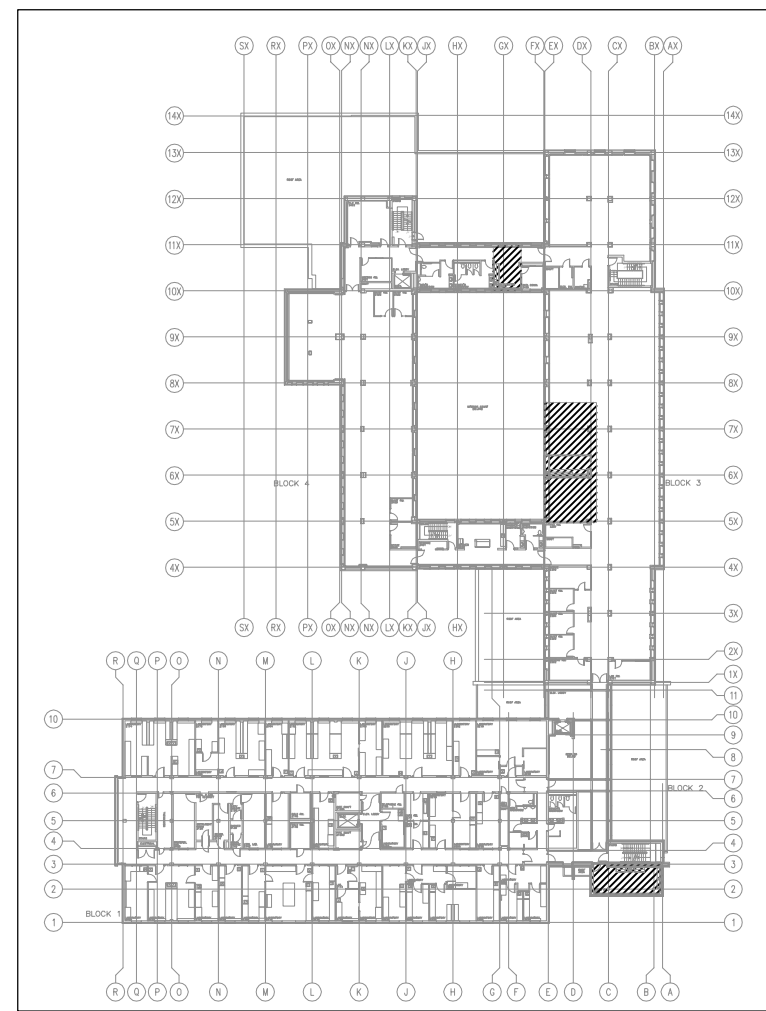
DRAWING:
MECHANICAL/MECHANIQUE:
GROUND FLOOR WORK/
TRAVAUX DU REZ-DE-CHAUSSÉE

DATE:	DEC 2015
DESIGNED BY:	M.L.
DRAWN BY:	M.L.
CHECKED BY:	S.C.
SCALE:	AS SHOWN

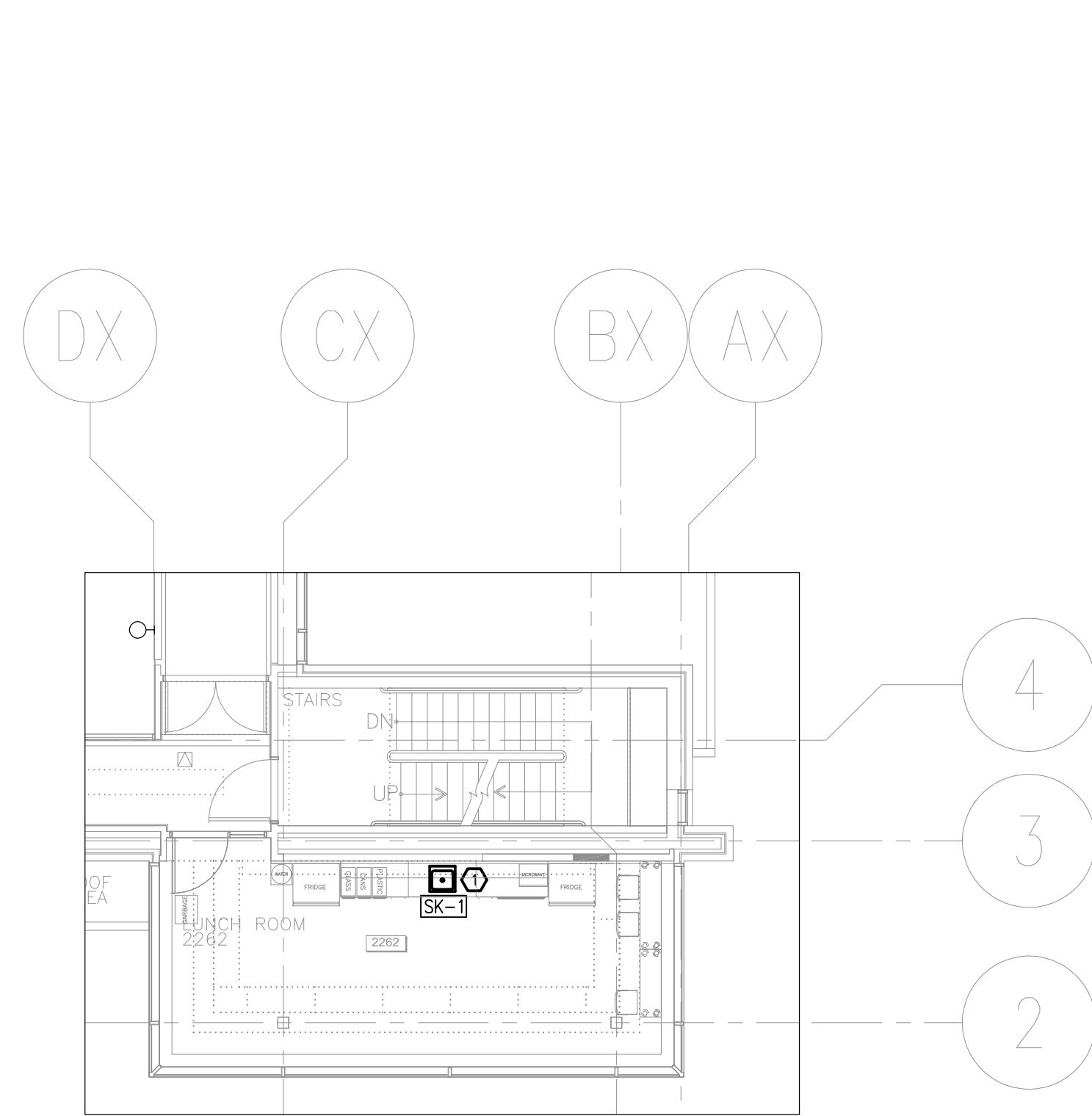
No. DWGS. 4	DRAWING No.
PROJECT No. 16026	M-2

THESE DESIGN DOCUMENTS ARE PREPARED SOLELY FOR THE USE BY THE PARTY WITH WHOM THE DESIGN PROFESSIONAL HAS ENTERED INTO A CONTRACT AND THERE ARE NO REPRESENTATIONS OF ANY KIND MADE BY THE DESIGN PROFESSIONAL TO ANY PARTY WITH WHOM THE DESIGN PROFESSIONAL HAS NOT ENTERED INTO A CONTRACT.

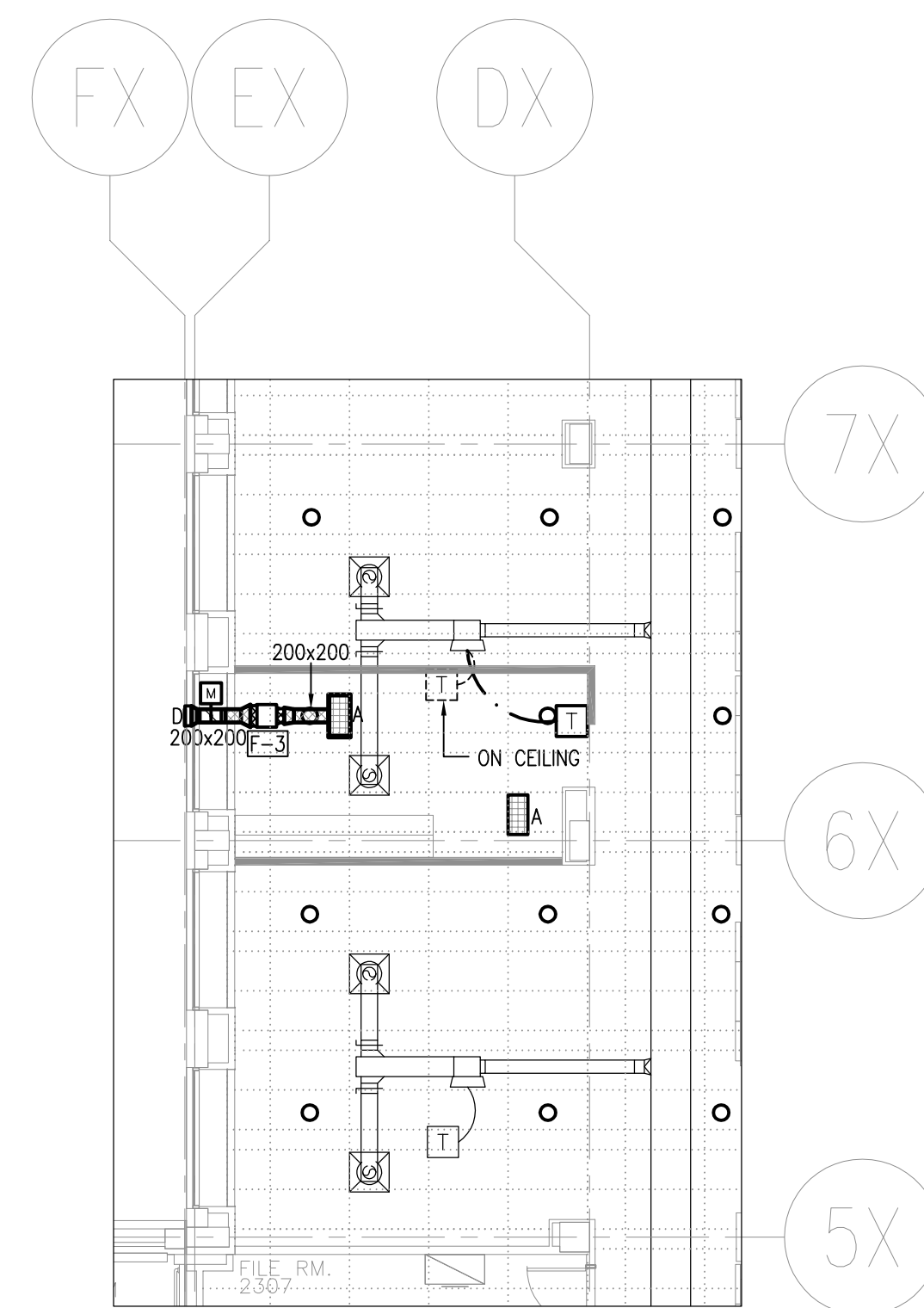
THE PAPER COPY OF THE DRAWINGS ISSUED FOR BUILDING PERMIT AND/OR TENDER WILL TAKE PRECEDENCE OVER ELECTRONIC COPIES.



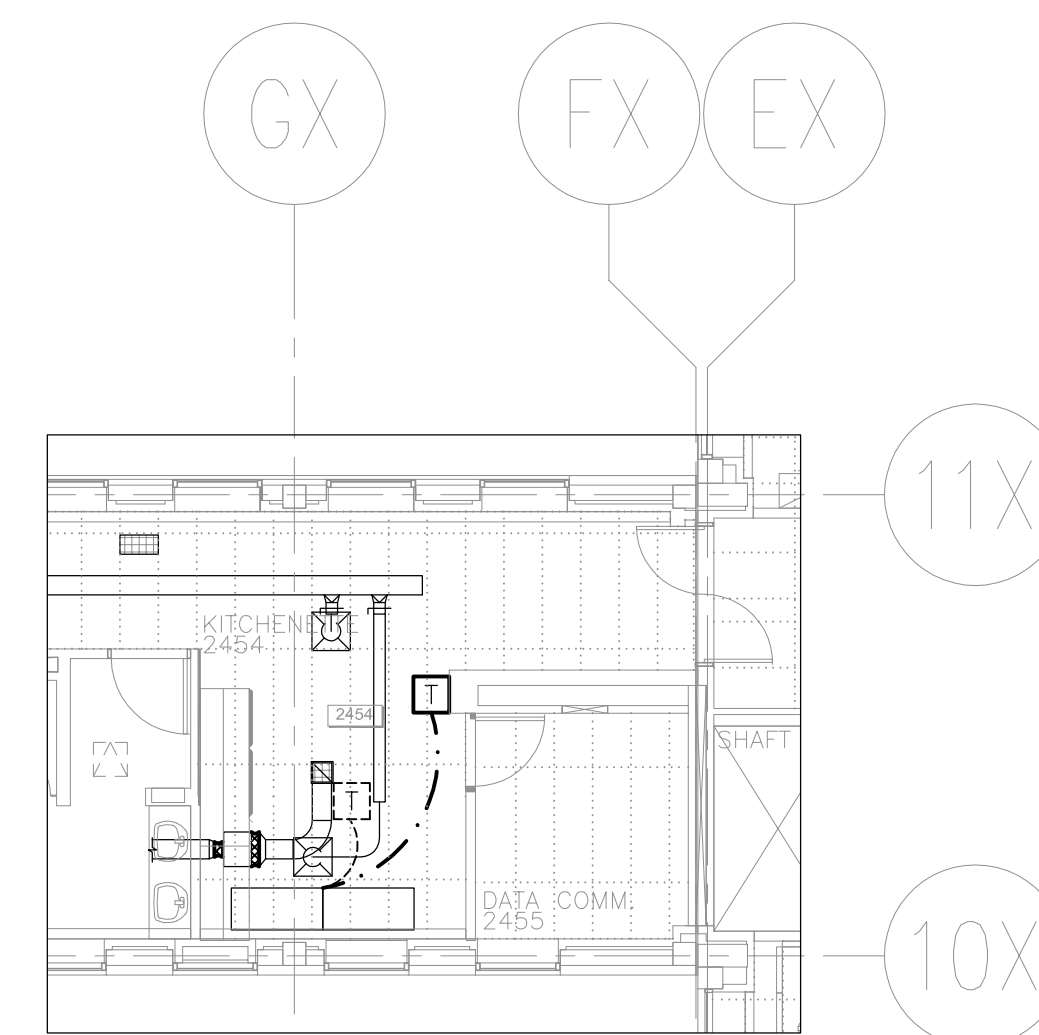
1 SECOND FLOOR AREAS OF WORK
M-3 ZONES DE TRAVAUX DU 2E ÉTAGE
N.T.S.



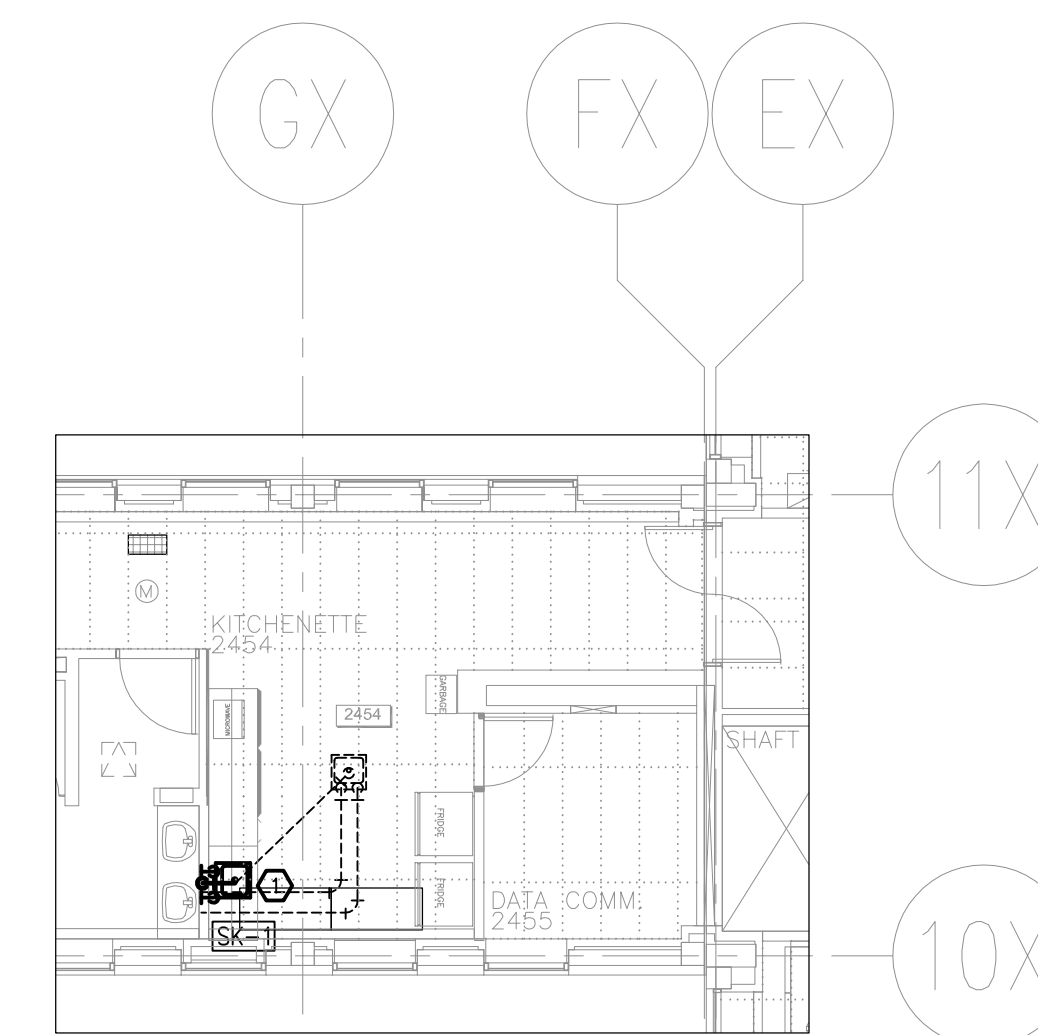
2 SECOND FLOOR PARTIAL PLUMBING/
M-3 PLOMBERIE PARTIEL DU 2E ÉTAGE
1:100



3 SECOND FLOOR PARTIAL HVAC/
M-3 CVCA PARTIEL DU 2E ÉTAGE
1:100



4 SECOND FLOOR PARTIAL HVAC/
M-3 CVCA PARTIEL DU 2E ÉTAGE
1:100



5 SECOND FLOOR PARTIAL PLUMBING/
M-3 PLOMBERIE PARTIEL DU 2E ÉTAGE
1:100

DRAWING NOTES/NOTES AU PLAN

⊕ REMOVE AND DISPOSE OF EXISTING SINK AND FAUCET. SUPPLY AND INSTALL NEW SINK AND FAUCET. CUT BACK AND EXTEND DOMESTIC COLD WATER, DOMESTIC HOT WATER AND SANITARY PIPING AS REQUIRED AND CONNECT SERVICES TO NEW SINK AND FAUCET.
FOURNIR ET INSTALLER UN NOUVEL ÉVIER ET UN NOUVEAU ROBINET EN REMPLACEMENT DES APPARELS EXISTANTS. MODIFIER LA TUYAUTERIE D'EAU FROIDE DOMESTIQUE, D'EAU CHAUDE DOMESTIQUE ET DE DRAINAGE SANITAIRE TEL QUE REQUIS POUR LA CONNECTION DES NOUVEAUX APPARELS.

DRAWING NOTES/NOTES AU PLAN

⊕ REMOVE AND DISPOSE OF EXISTING SINK AND FAUCET. CUT BACK DOMESTIC COLD WATER, DOMESTIC HOT WATER AND SANITARY PIPING FROM EXISTING SINK. MODIFY PIPING AS REQUIRED TO CONNECT SERVICES TO NEW SINK AND FAUCET.
RETRER ÉVIER ET ROBINET EXISTANT ET REMPLACER AVEC UN NOUVEL ÉVIER. MODIFIER LA TUYAUTERIE D'EAU FROIDE DOMESTIQUE, D'EAU CHAUDE DOMESTIQUE ET DE DRAINAGE SANITAIRE TEL QUE REQUIS POUR LA CONNECTION DES NOUVEAUX APPARELS.

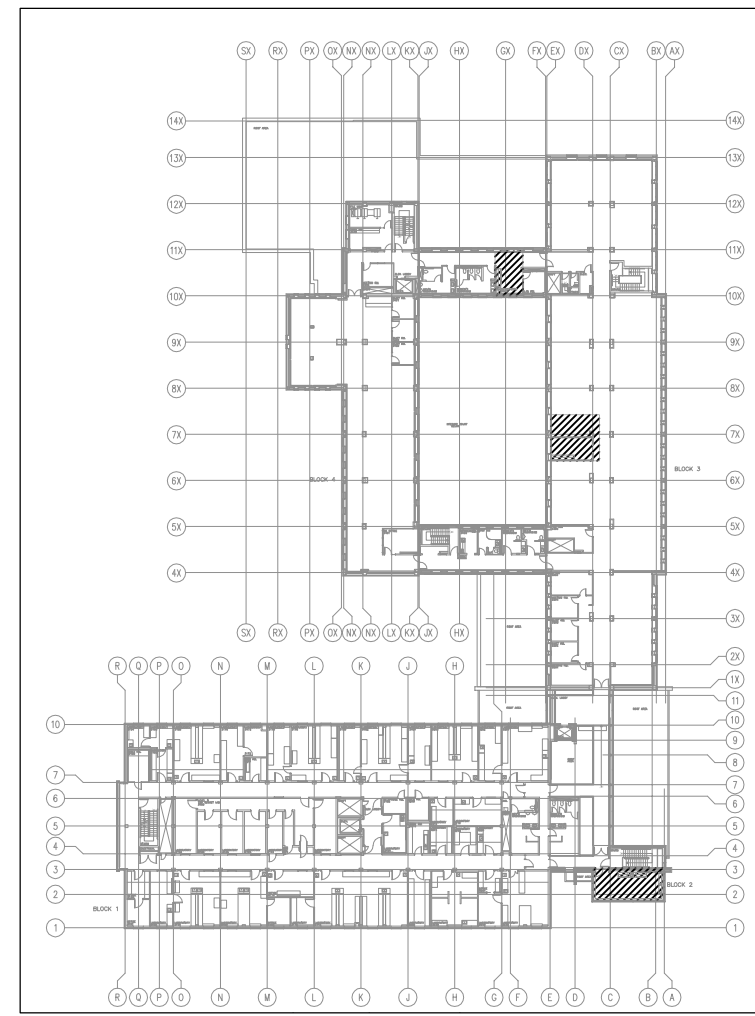
REVISION No.	DESCRIPTION	DATE
3.	ISSUED FOR TENDER / ÉMIS POUR SOUMISSION	FEB 01/16
2.	ISSUED FOR 99% REVIEW / ÉMIS POUR 99% RÉVISION	JAN 18/16
1.	ISSUED FOR 66% REVIEW / ÉMIS POUR 66% RÉVISION	DEC 21/15

MCKEE ENGINEERING
R.J. MCKEE ENGINEERING LTD.
1785 Woodward Drive
Ottawa, ON K2C 0P9
CANADA
Tel: (613) 723-9585
Fax: (613) 723-9584
www.mckeeottawa.ca

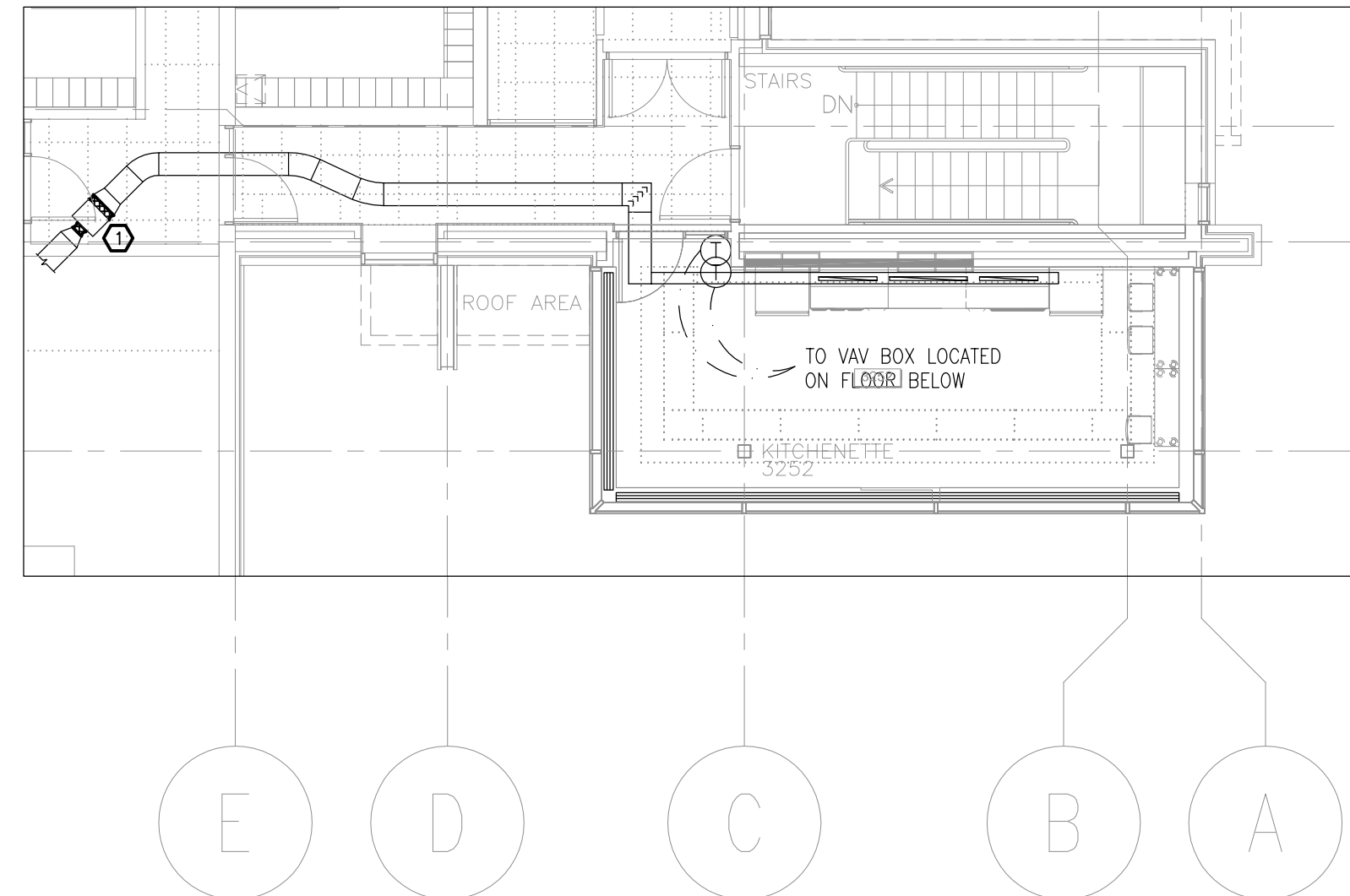
PROJECT:
HEALTH CANADA/SANTÉ CANADA
LCDC/LLCM
AMENITIES PROJECT
100 EGLANTINE DRIVEWAY
OTTAWA, ON

DRAWING:
MECHANICAL/MECHANIQUE:
SECOND FLOOR WORK/
TRAVAUX DU 2E ÉTAGE

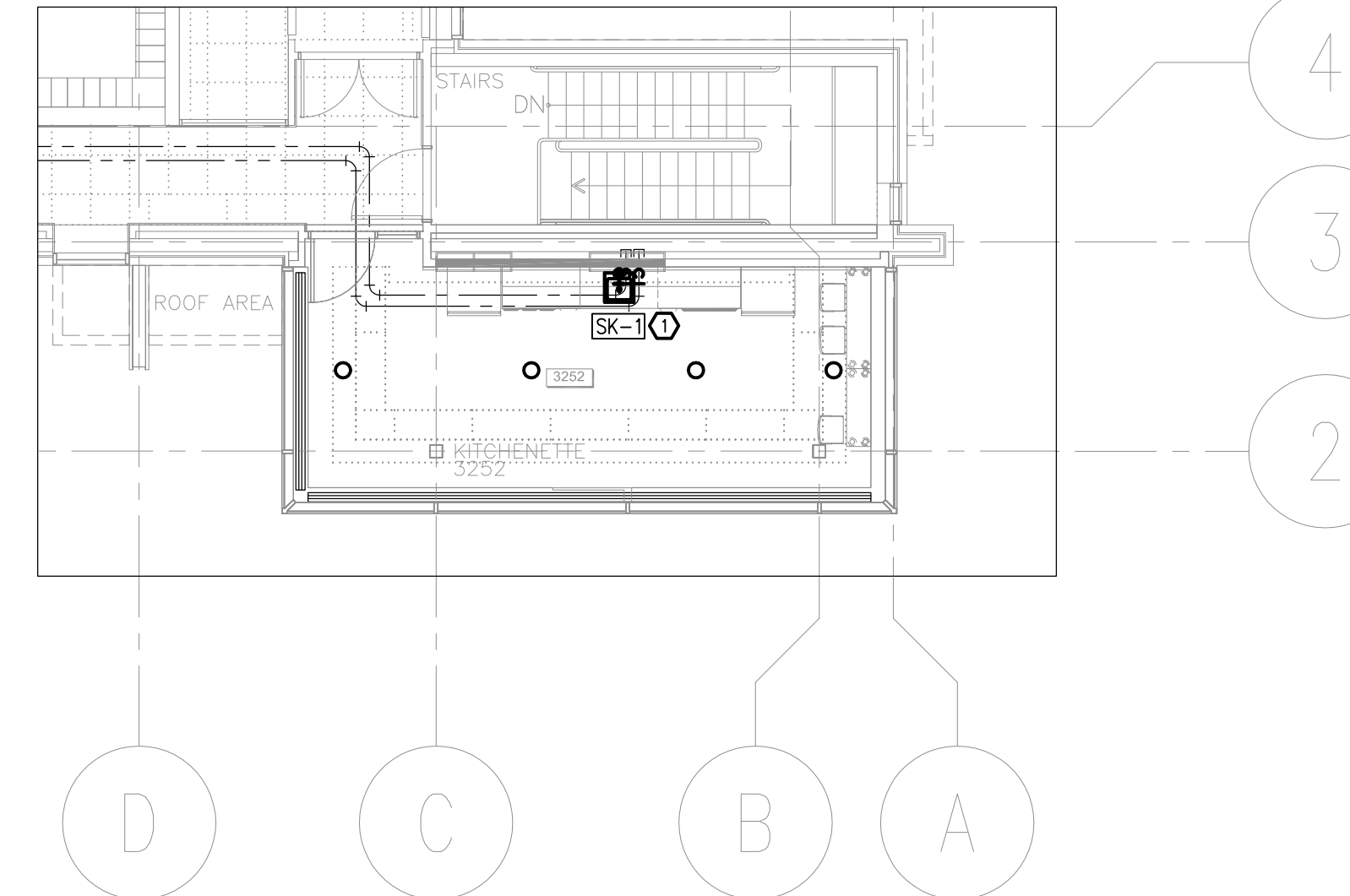
DATE:	DEC 2015
DESIGNED BY:	M.L.
DRAWN BY:	M.L.
CHECKED BY:	S.C.
SCALE:	AS SHOWN
No. DWGS. 4	DRAWING No.
PROJECT No.	M-3
16026	



1 THIRD FLOOR AREAS OF WORK
M-4 ZONES DE TRAVAUX DU 3E ÉTAGE
 1:100



2 THIRD FLOOR PARTIAL HVAC
M-4 CVCA PARTIEL DU 3E ÉTAGE
 1:100



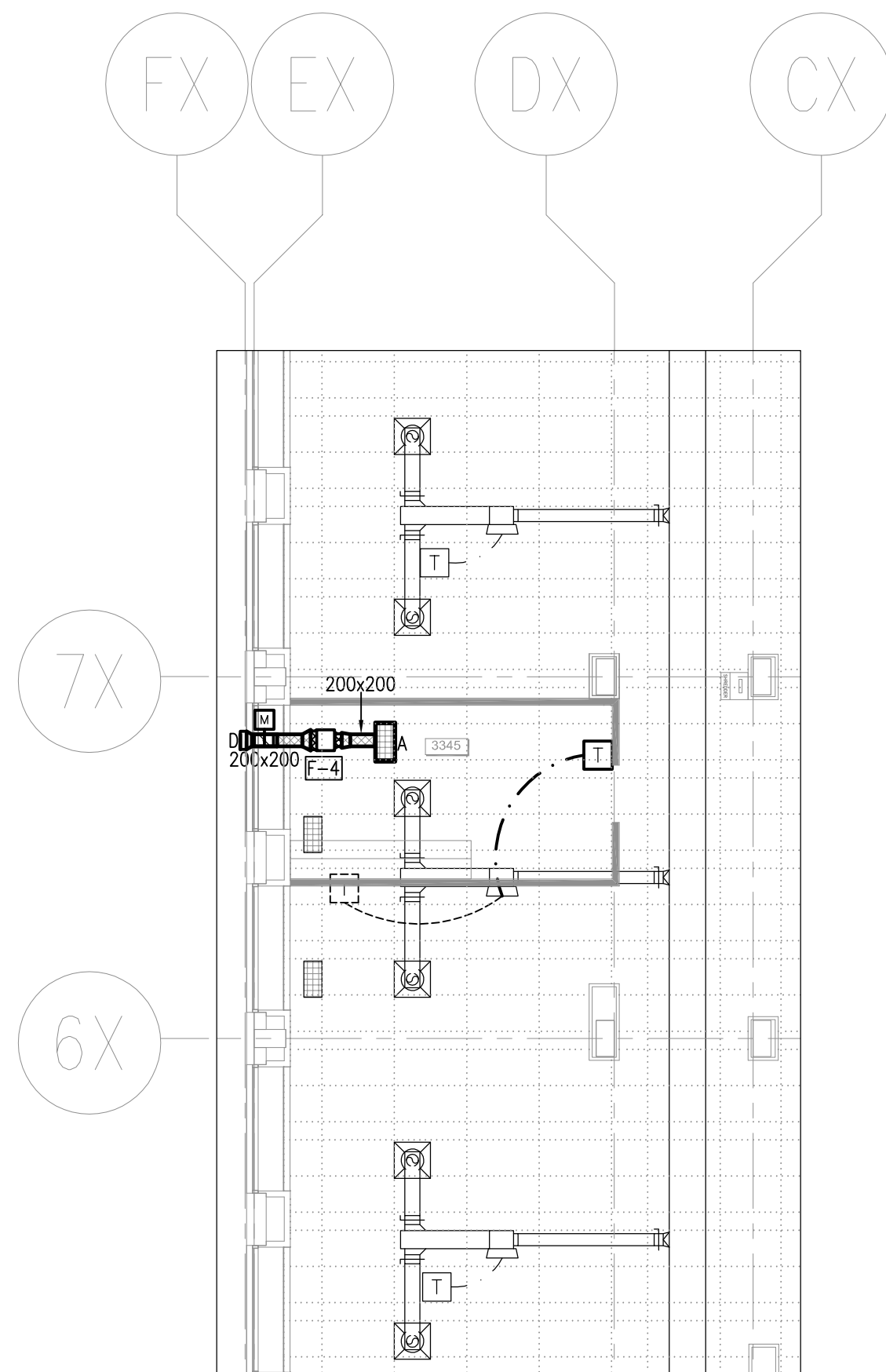
3 THIRD FLOOR PARTIAL PLUMBING
M-4 PLOMBERIE PARTIEL DU 3E ÉTAGE
 1:100

DRAWING NOTES/NOTES AU PLAN

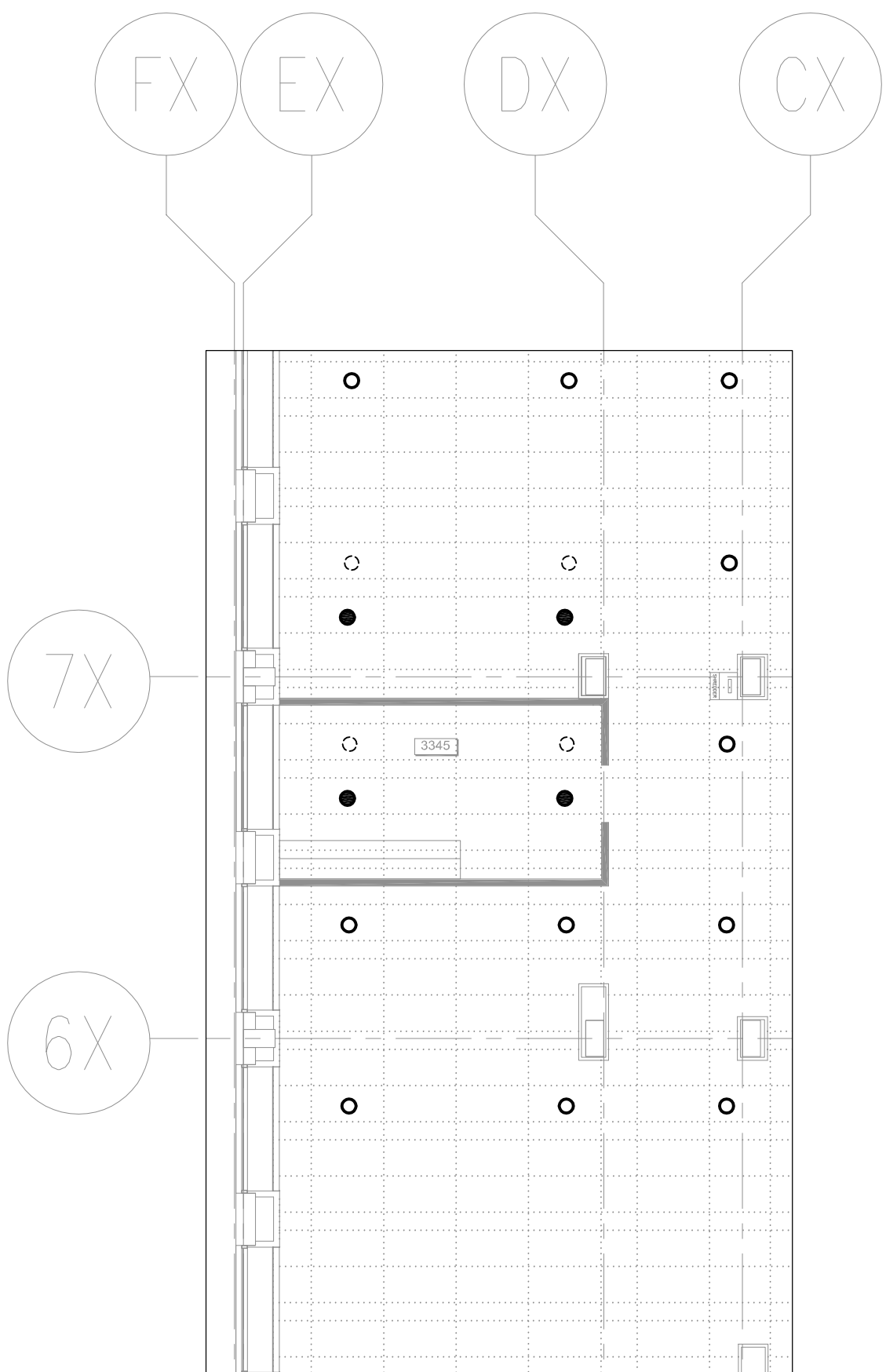
① REBALANCE EXHAUST FAN AND ASSOCIATED GRILLES SERVING KITCHENETTE TO 573 L/S. / REBALANCER LE VENTILATEUR D'ÉVACUATION ET LES GRILLES QUI DÉSERVENT LA CUISINE À 573 L/S.

DRAWING NOTES/NOTES AU PLAN

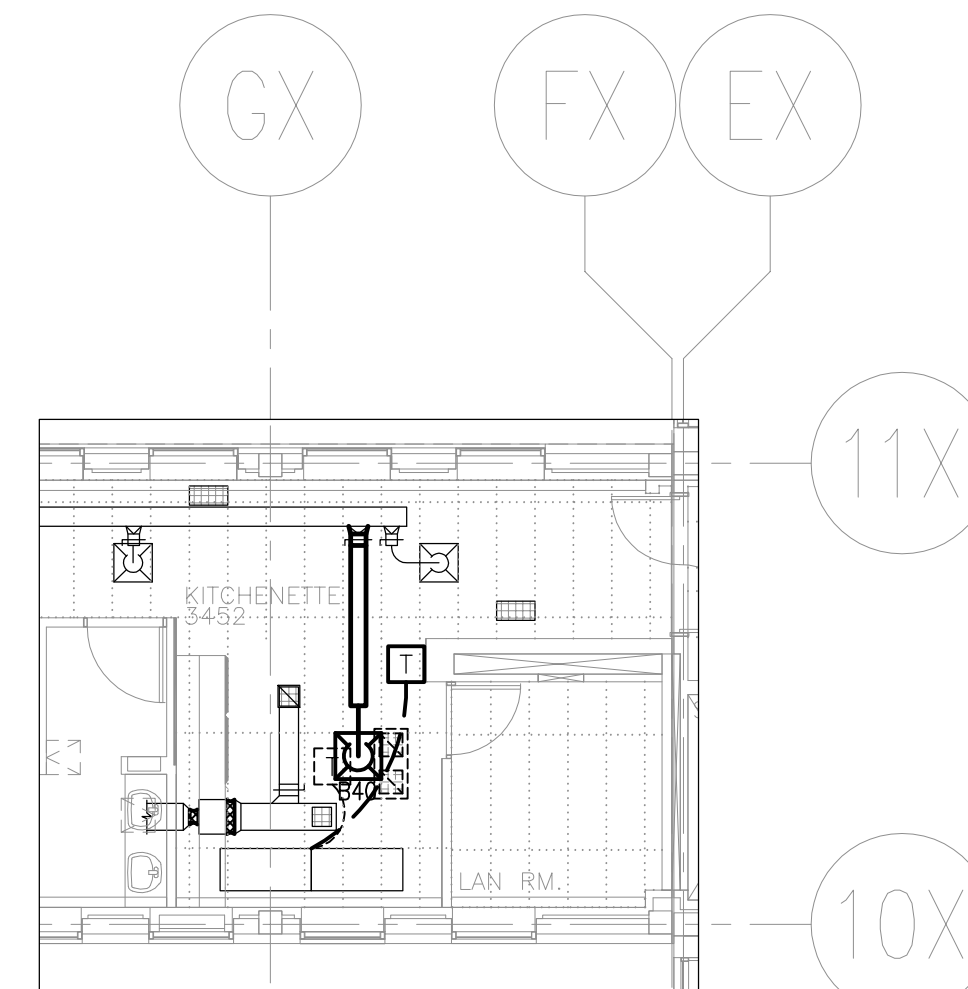
② SUPPLY AND INSTALL NEW SINK AND FAUCET. SK-1. RUN SANITARY PIPING TO WALL AND DROP DOWN WALL TO EXISTING SINK BELOW. CONNECT SANITARY PIPING TO EXISTING SANITARY PIPING FOR SINK BELOW. EXTEND DOMESTIC COLD AND HOT PIPING DOWN WALL TO NEW SINK. CONNECT TO EXISTING VENT PIPE IN THE CEILING SPACE. / FOURNIR ET INSTALLER NOUVEL ÉVIER ET ROBINET SK-1. LA TUYAUTERIE DE DRAINAGE SANITAIRE DEVRA ÊTRE INSTALLÉE JUSQU'AU MUR ET DESCENDRE VERS L'ÉVIER EXISTANT. RACCORDER NOUVELLE TUYAUTERIE SANITAIRE AU CONDUIT SANITAIRE DE L'ÉVIER EXISTANT. AJUSTÉE LA TUYAUTERIE D'EAU CHAUDE ET D'EAU FROIDE DOMESTIQUE JUSQU'À L'ÉVIER À L'ÉTAGE DU DESSOUS. RACCORDER LA VENTILATION DE L'ÉVIER AU TUYAU DE VENTILATION EXISTANT SITUÉ DANS LE PLAFOND.



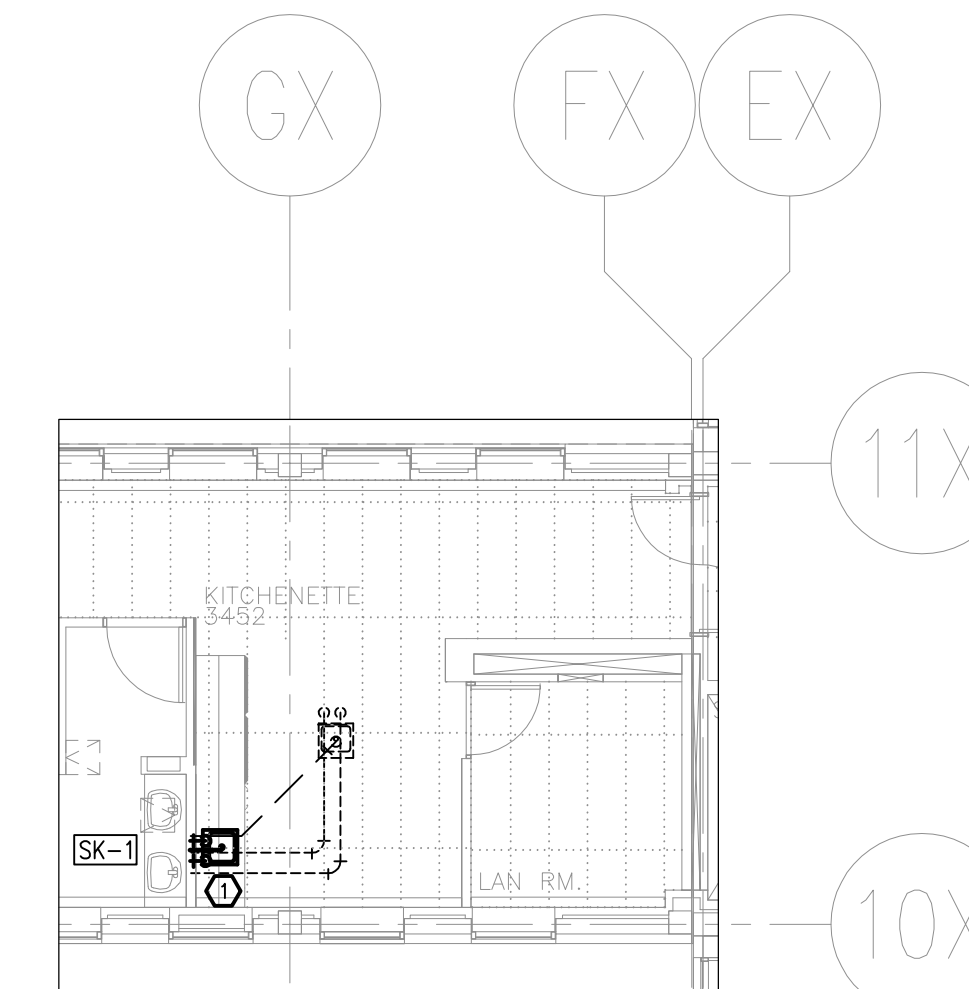
4 THIRD FLOOR PARTIAL HVAC
M-4 CVCA PARTIEL DU 3E ÉTAGE
 1:100



5 THIRD FLOOR PARTIAL FIRE PROTECTION
M-4 PROTECTION INCENDIE PARTIEL DU 3E ÉTAGE
 1:100



6 THIRD FLOOR PARTIAL HVAC
M-4 CVCA PARTIEL DU 3E ÉTAGE
 1:100



7 THIRD FLOOR PARTIAL PLUMBING
M-4 PLOMBERIE PARTIEL DU 3E ÉTAGE
 1:100

DRAWING NOTES/NOTES AU PLAN

③ REMOVE AND DISPOSE OF EXISTING SINK AND FAUCET. CUT BACK DOMESTIC COLD WATER, DOMESTIC HOT WATER AND SANITARY PIPING FROM EXISTING SINK. MODIFY PIPING AS REQUIRED TO CONNECT SERVICES TO NEW SINK AND FAUCET. / RETIRER ÉVIER EXISTANT ET REMPLACER AVEC UN NOUVEL ÉVIER. MODIFIER LA TUYAUTERIE D'EAU FROIDE DOMESTIQUE, D'EAU CHAUDE DOMESTIQUE ET DE DRAINAGE SANITAIRE TEL QUE REQUIS POUR LA CONNECTION DU NOUVEL APPAREIL.

THESE DESIGN DOCUMENTS ARE PREPARED SOLELY FOR THE USE BY THE PARTY WITH WHOM THE DESIGN PROFESSIONAL HAS ENTERED INTO A CONTRACT AND THERE ARE NO REPRESENTATIONS OF ANY KIND MADE BY THE DESIGN PROFESSIONAL TO ANY PARTY WITH WHOM THE DESIGN PROFESSIONAL HAS NOT ENTERED INTO A CONTRACT.

THE PAPER COPY OF THE DRAWINGS ISSUED FOR BUILDING PERMIT AND/OR TENDER WILL TAKE PRECEDENCE OVER ELECTRONIC COPIES.

REVISION No.	DESCRIPTION	DATE
3.	ISSUED FOR TENDER / ÉMIS POUR SOUMISSION	FEB 01/16
2.	ISSUED FOR 99% REVIEW / ÉMIS POUR 99% RÉVISION	JAN 18/16
1.	ISSUED FOR 66% REVIEW / ÉMIS POUR 66% RÉVISION	DEC 21/15

MCKEE ENGINEERING
 R.J. MCKEE ENGINEERING LTD.
 1785 Woodward Drive
 Ottawa, ON K2C 0P9
 CANADA
 Tel: (613) 723-9585
 Fax: (613) 723-9584
 www.mckeeottawa.ca

PROJECT:
 HEALTH CANADA/SANTÉ CANADA
 LCDC/LLCM
 AMENITIES PROJECT
 100 EGLANTINE DRIVEWAY
 OTTAWA, ON

DRAWING:
 MECHANICAL/MECHANIQUE:
 THIRD FLOOR WORK
 TRAVAUX DU 3E ÉTAGE

DATE:	DEC 2015
DESIGNED BY:	M.L.
DRAWN BY:	M.L.
CHECKED BY:	S.C.
SCALE:	AS SHOWN

No. DWGS. 4	DRAWING No.
PROJECT No. 16026	M-4