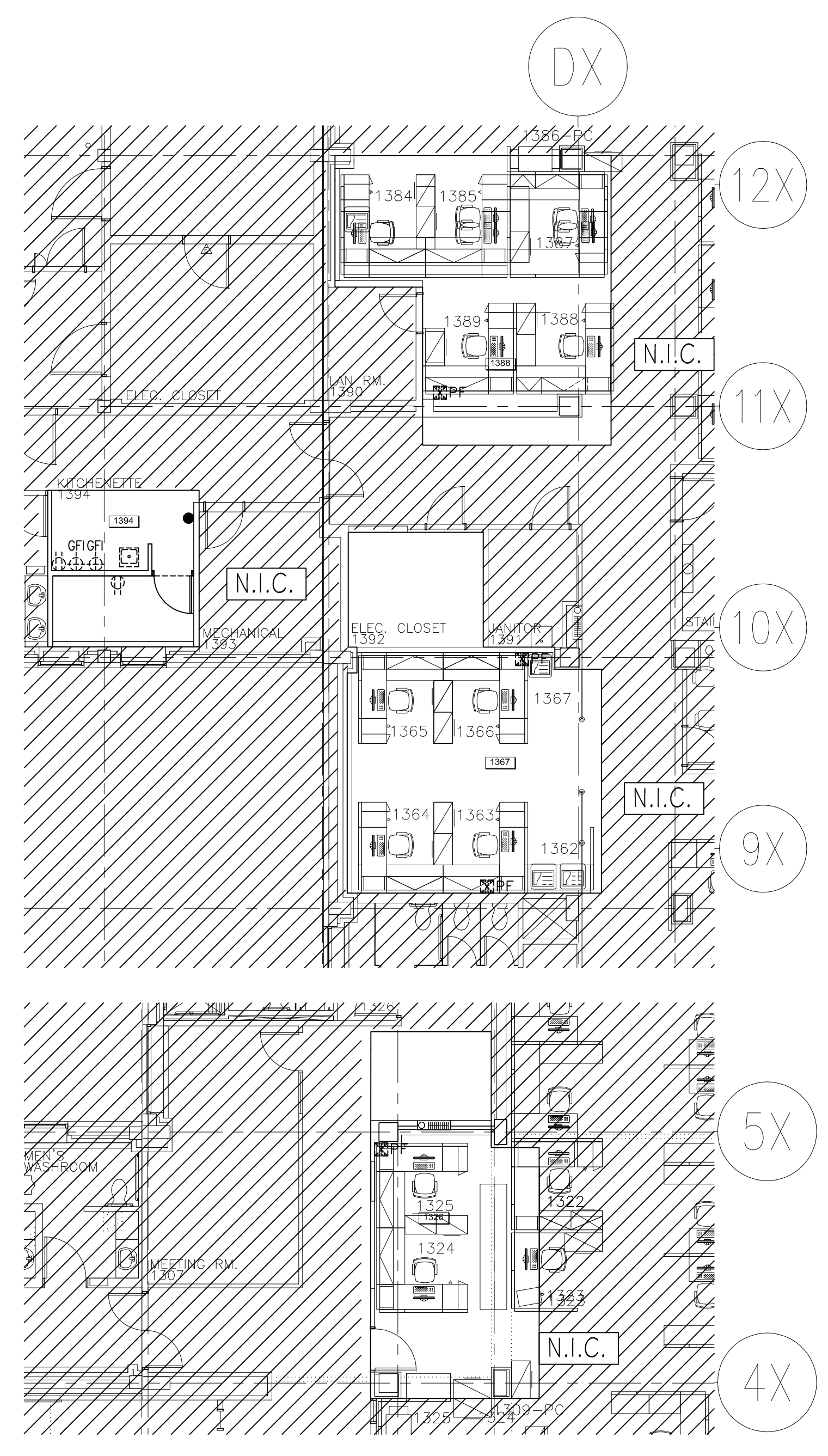
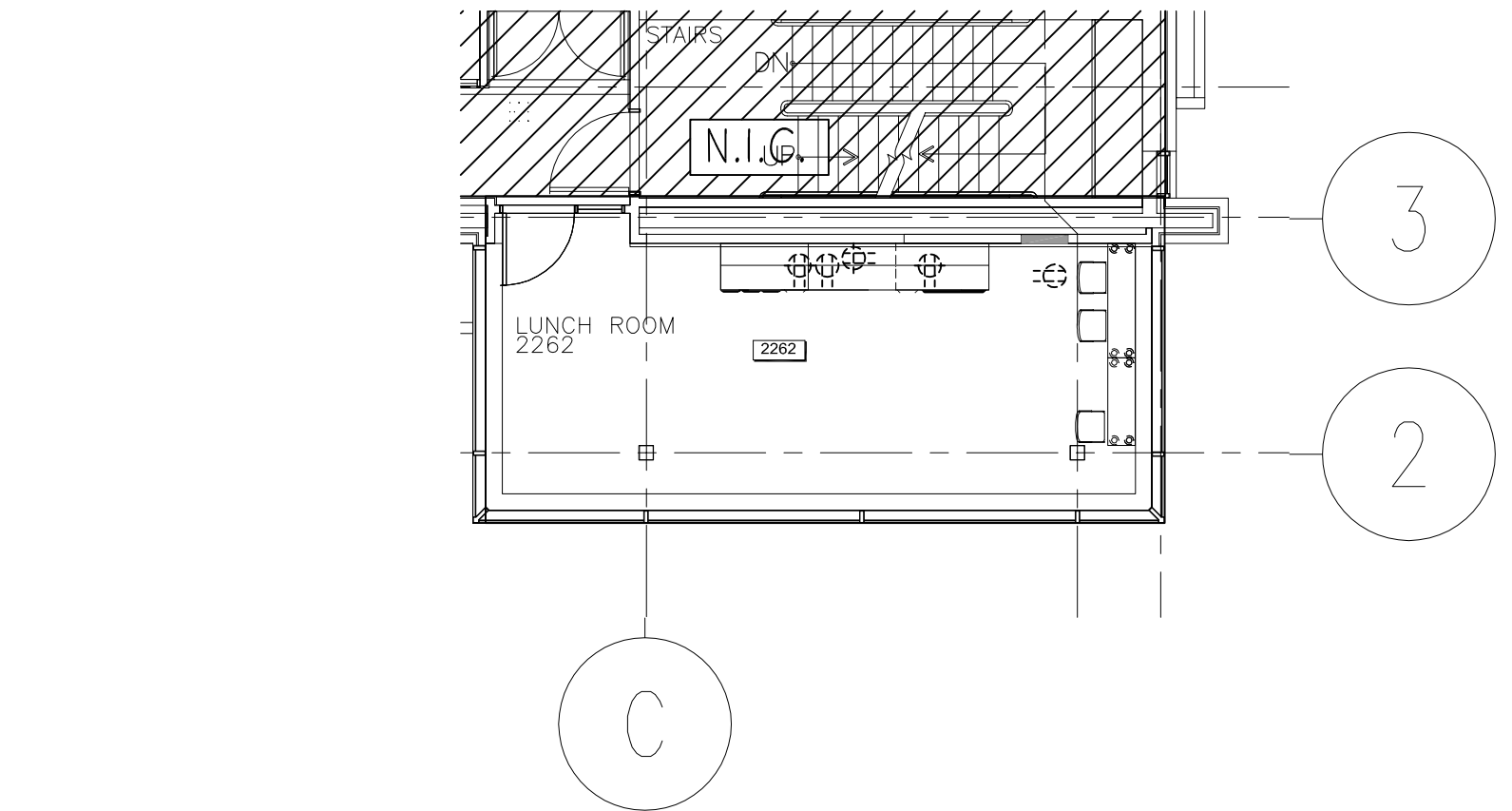
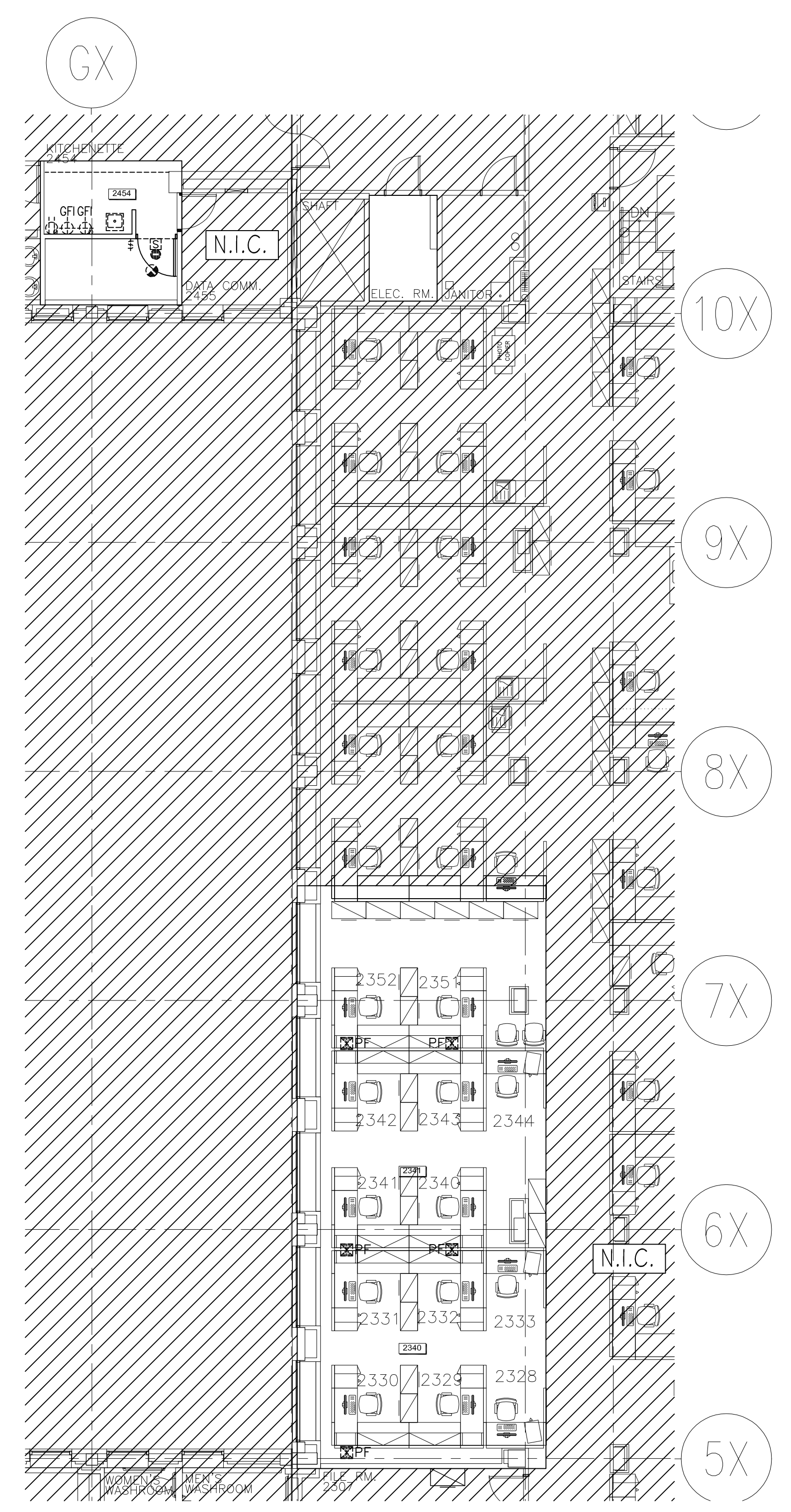


THESE DESIGN DOCUMENTS ARE PREPARED SOLELY FOR THE USE BY THE PARTY WITH WHOM THE DESIGN PROFESSIONAL HAS ENTERED INTO A CONTRACT AND THERE ARE NO REPRESENTATIONS OF ANY KIND MADE BY THE DESIGN PROFESSIONAL TO ANY PARTY WITH WHOM THE DESIGN PROFESSIONAL HAS NOT ENTERED INTO A CONTRACT.

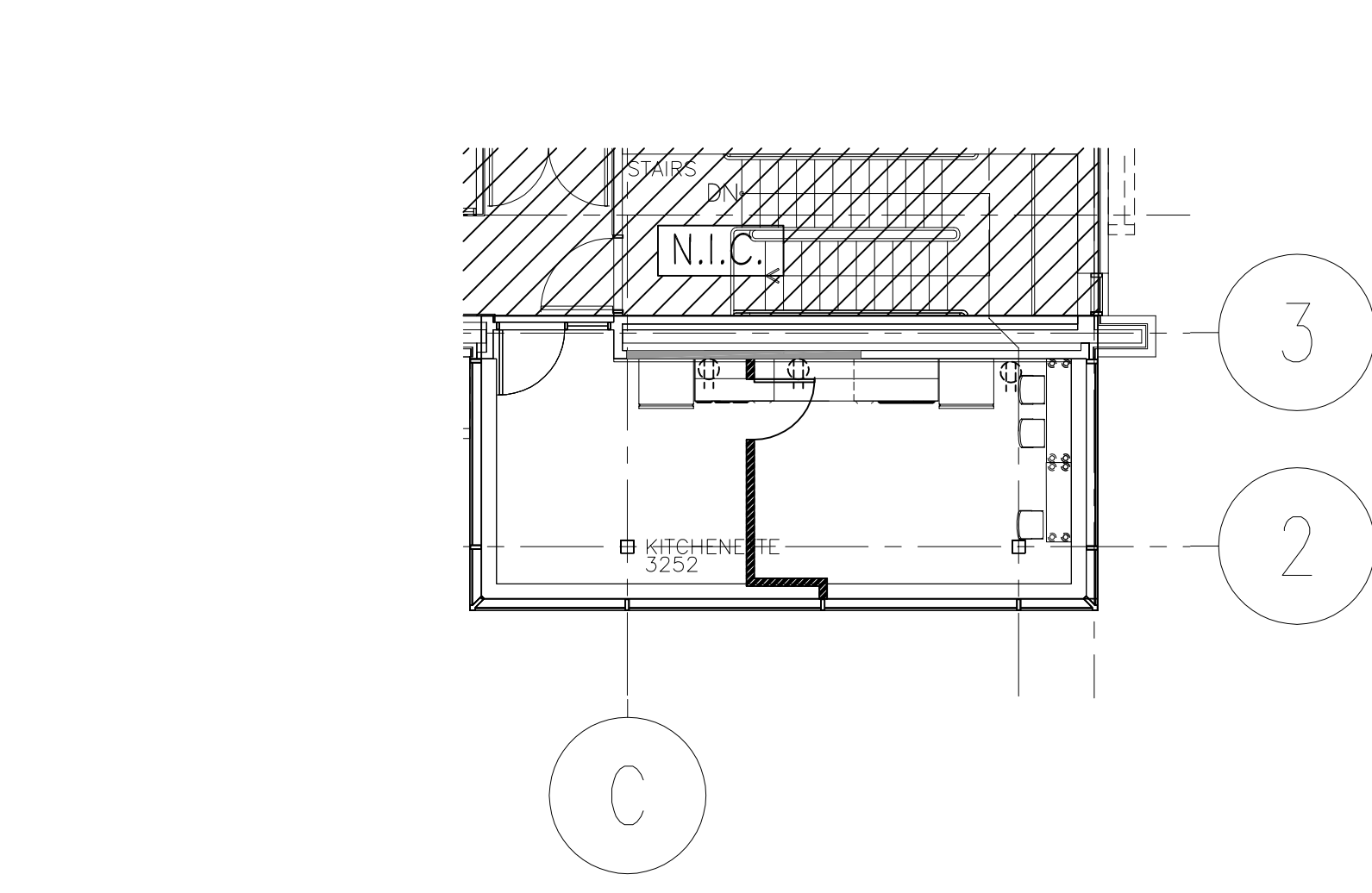
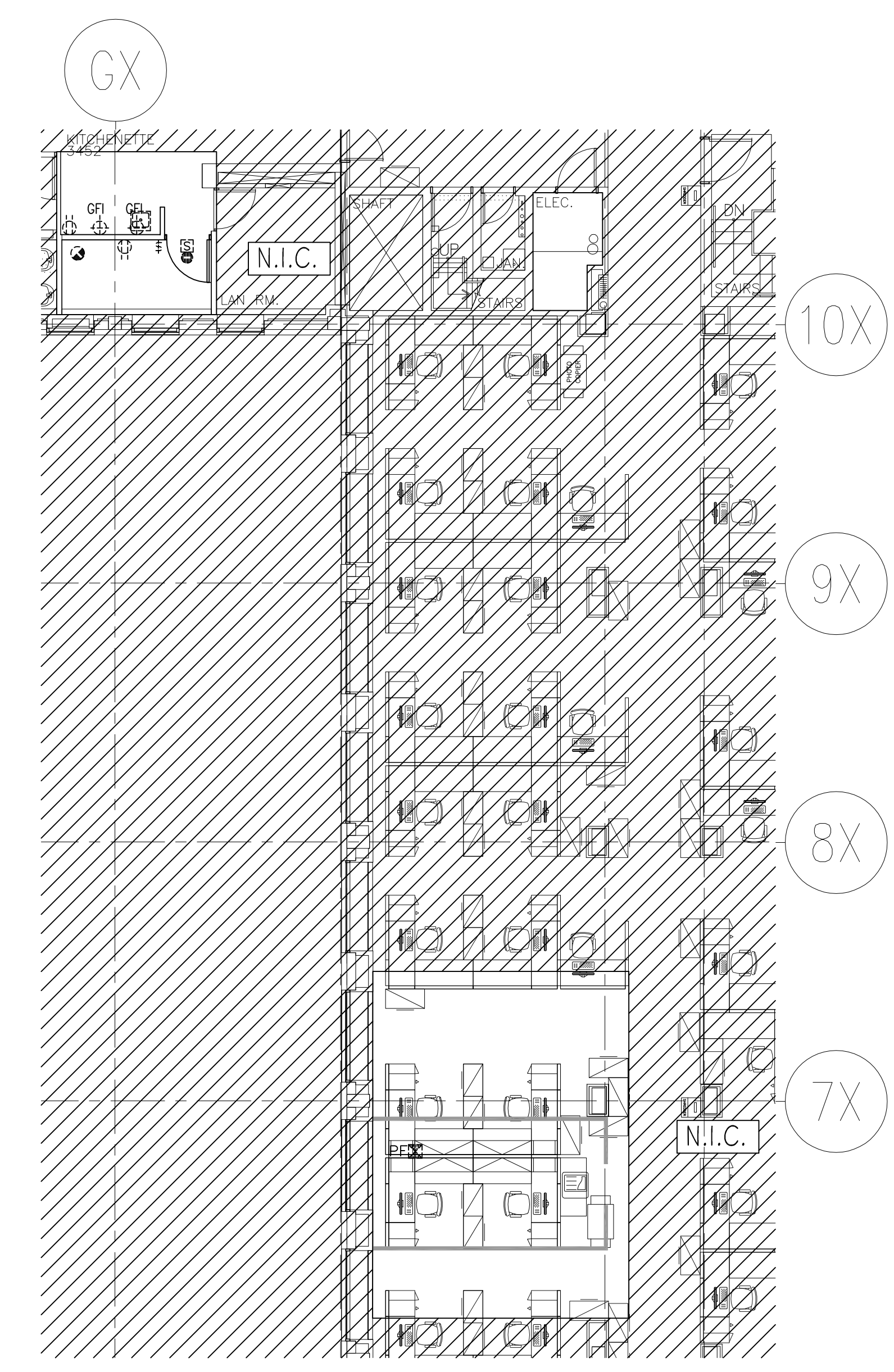
THE PAPER COPY OF THE DRAWINGS ISSUED FOR BUILDING PERMIT AND/OR TENDER WILL TAKE PRECEDENCE OVER ELECTRONIC COPIES.



1 GROUND FLOOR DEMOLITION/ DÉMOLITION DU REZ-DE-CHAUSSÉE  
ED-1 1:100



2 2ND FLOOR DEMOLITION/ DÉMOLITION 2E ÉTAGE  
ED-1 1:100



3 3RD FLOOR DEMOLITION/ DÉMOLITION 3E ÉTAGE  
ED-1 1:100

REVISION No.	DESCRIPTION	DATE
3.	ISSUED FOR TENDER/ EMIS POUR SOUMISSION	FEB 1/16
2.	ISSUED FOR 99% REVIEW/ EMIS POUR 99% RÉVISION	JAN 18/16
1.	ISSUED FOR 68% REVIEW/ EMIS POUR 66% RÉVISION	DEC 21/15

**MCKEE ENGINEERING**  
R.J. MCKEE ENGINEERING LTD.  
1785 Woodward Drive  
Ottawa, ON K2C 0P9  
CANADA  
Tel: (613) 723-9585  
Fax: (613) 723-9584  
www.mckeeottawa.ca

PROJECT:  
HEALTH CANADA/SANTÉ CANADA  
LCDC/LLCM  
AMENITIES PROJECT  
100 EGLANTINE DRIVEWAY  
OTTAWA, ON

DRAWING:  
ELECTRICAL/ÉLECTRICITÉ:  
DEMOLITION/  
DÉMOLITION

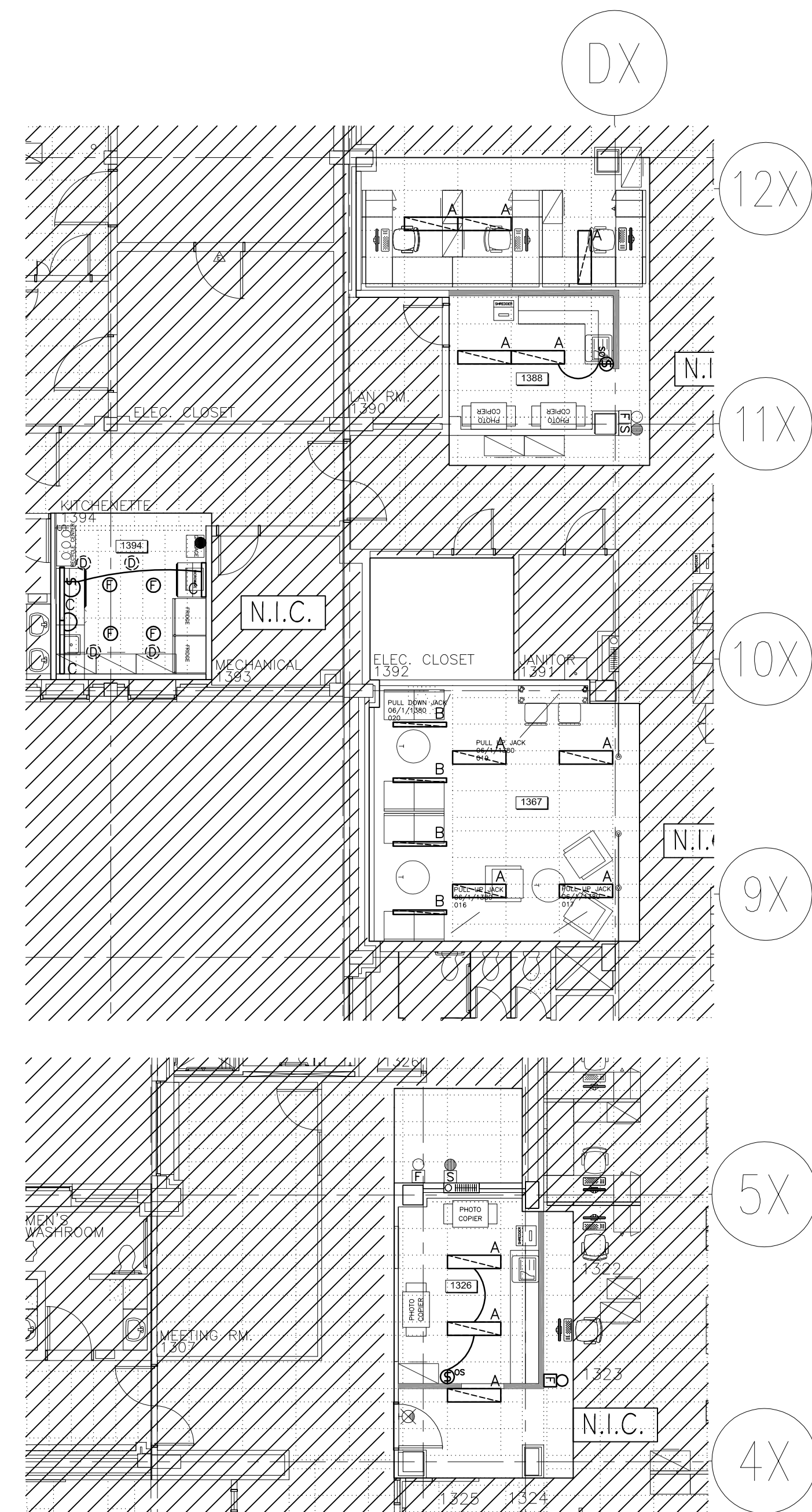
DATE:	DEC 2015
DESIGNED BY:	J.F.B.
DRAWN BY:	J.F.B.
CHECKED BY:	G.O.M.
SCALE:	AS SHOWN

No. DWGS. 4	DRAWING No.
PROJECT No.	ED-1
16026	

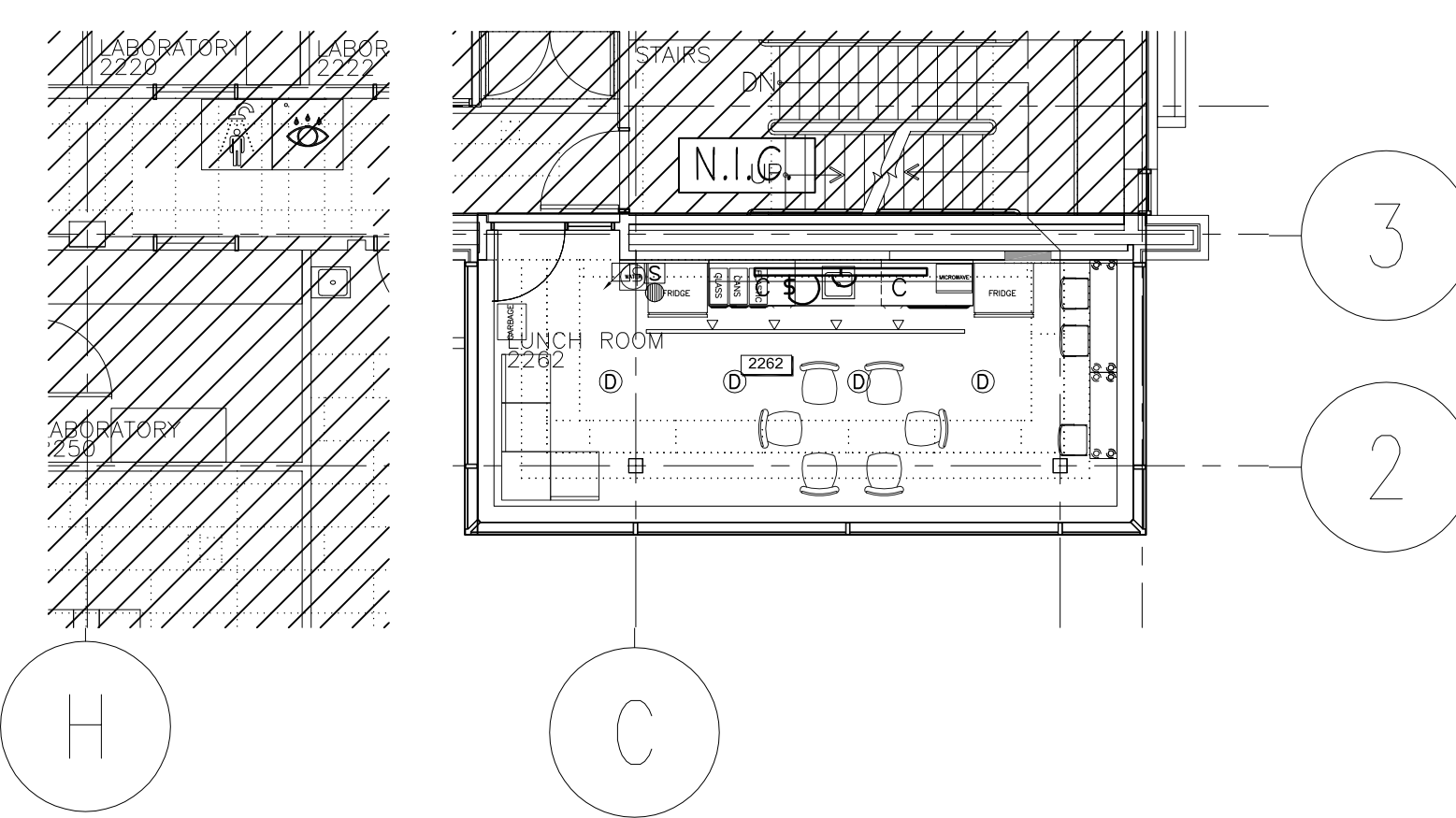
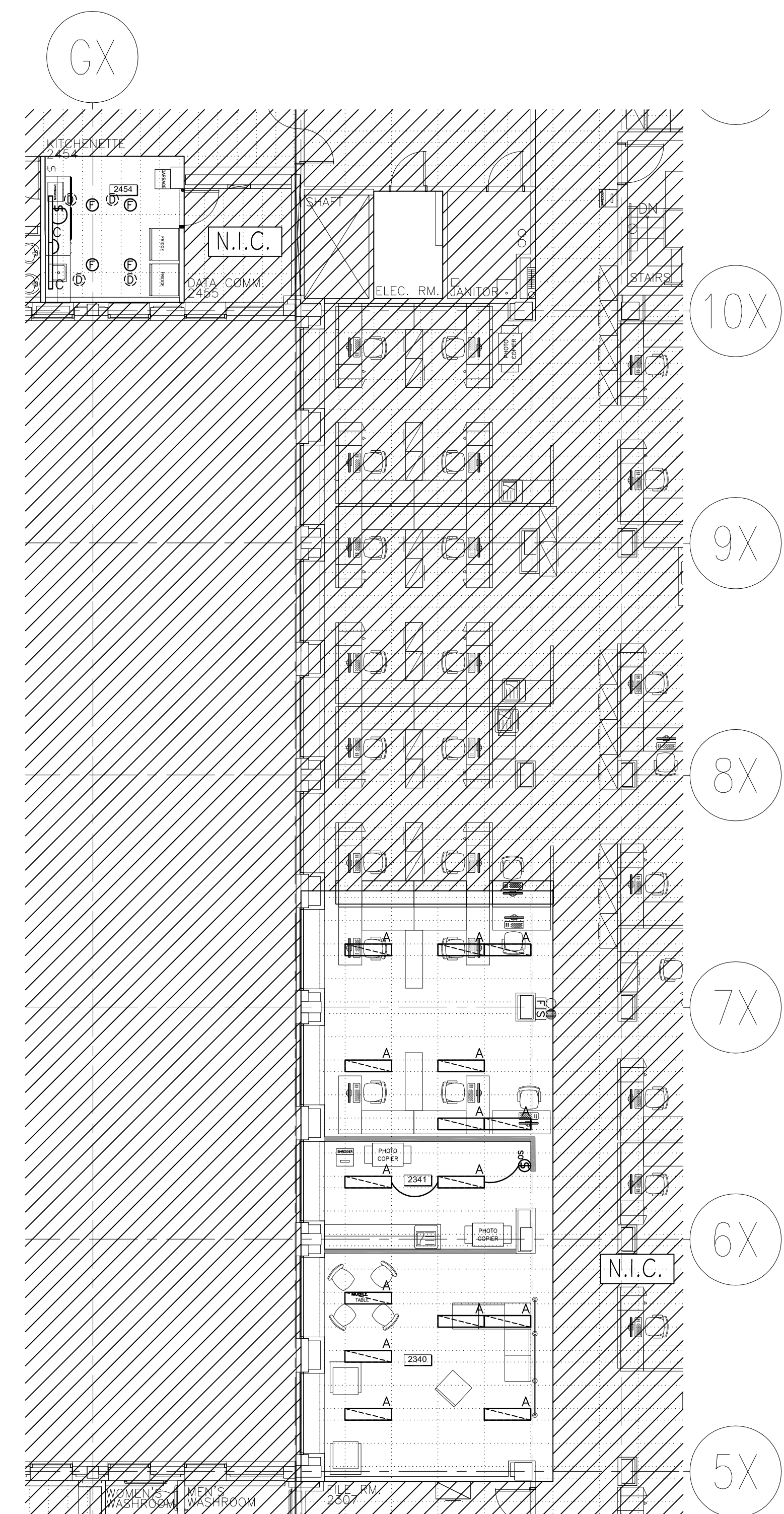


THESE DESIGN DOCUMENTS ARE PREPARED SOLELY FOR THE USE BY THE PARTY WITH WHOM THE DESIGN PROFESSIONAL HAS ENTERED INTO A CONTRACT AND THERE ARE NO REPRESENTATIONS OF ANY KIND MADE BY THE DESIGN PROFESSIONAL TO ANY PARTY WITH WHOM THE DESIGN PROFESSIONAL HAS NOT ENTERED INTO A CONTRACT.

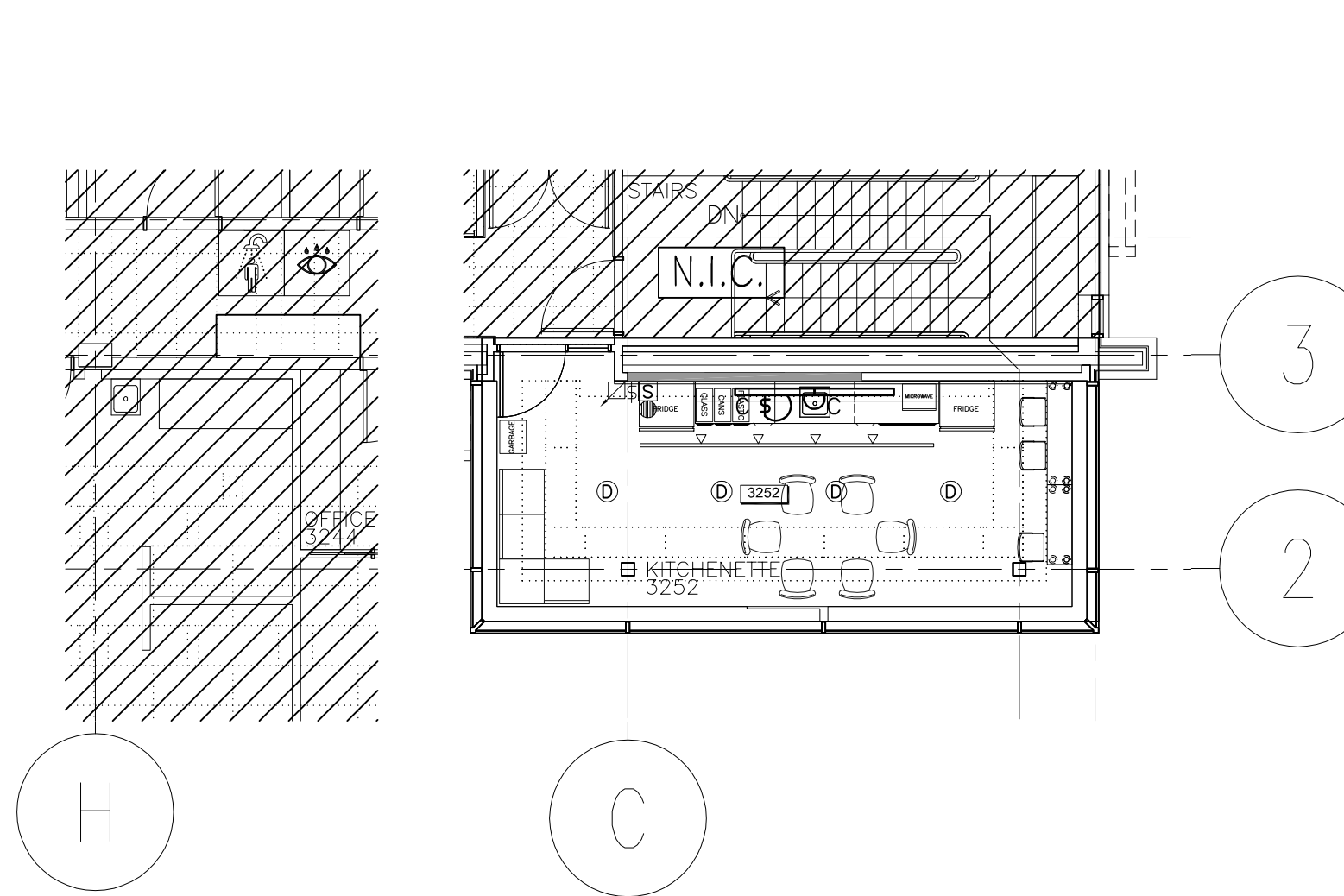
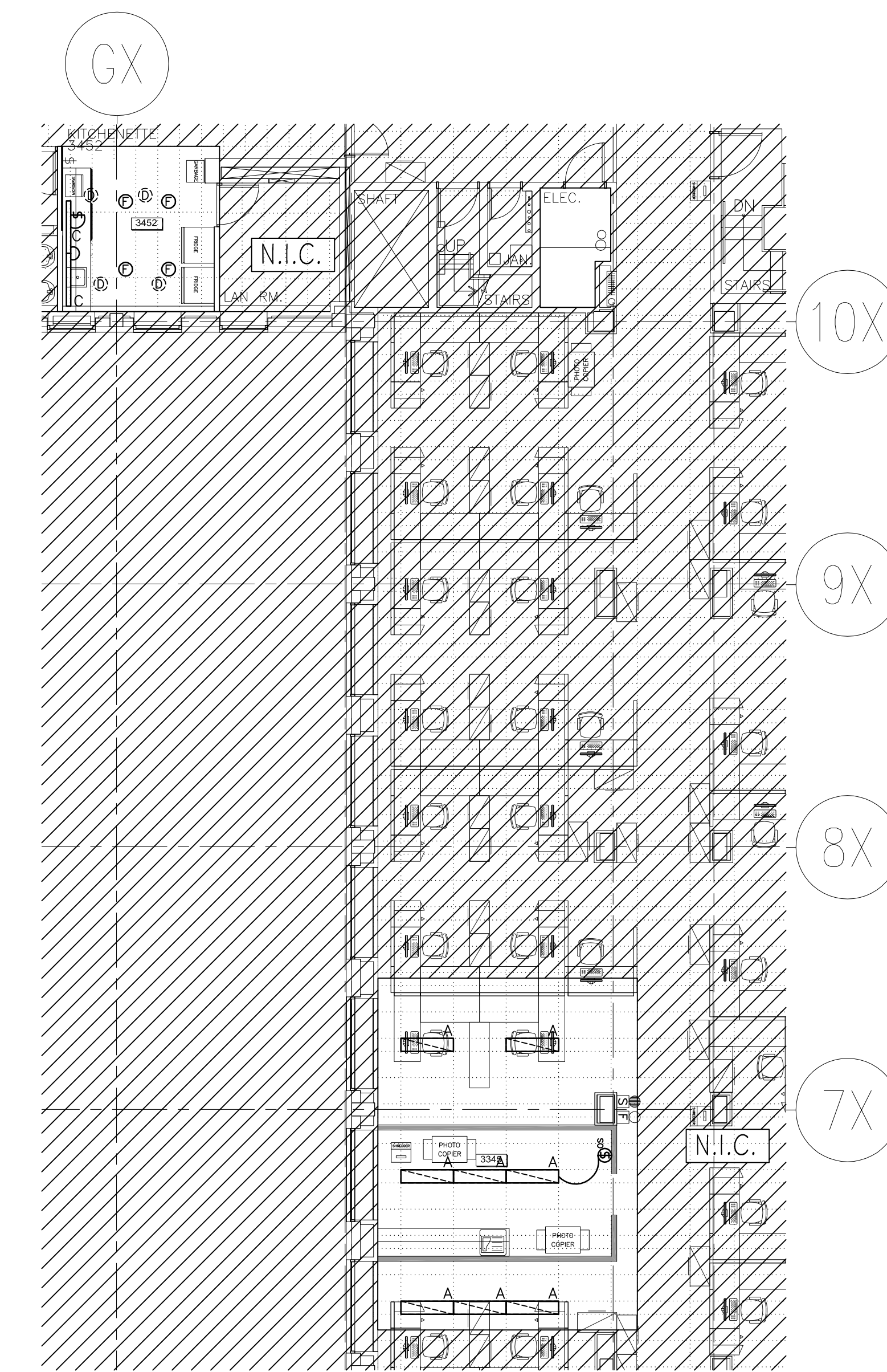
THE PAPER COPY OF THE DRAWINGS ISSUED FOR BUILDING PERMIT AND/OR TENDER WILL TAKE PRECEDENCE OVER ELECTRONIC COPIES.



1 GROUND FLOOR LIGHTING AND FIRE ALARM/  
E-2 ÉCLAIRAGE & SYSTÈME D'ALARME-INCENDIE DU REZ-DE-CHAUSSÉE  
1:100



2 2ND FLOOR LIGHTING AND FIRE ALARM/  
E-2 ÉCLAIRAGE & SYSTÈME D'ALARME-INCENDIE 2E ÉTAGE  
1:100



3 3RD FLOOR LIGHTING AND FIRE ALARM/  
E-2 ÉCLAIRAGE & SYSTÈME D'ALARME-INCENDIE 3E ÉTAGE  
1:100

REVISION No.	DESCRIPTION	DATE
3.	ISSUED FOR TENDER/ EMIS POUR SOUMISSION	FEB 1/16
2.	ISSUED FOR 99% REVIEW/ EMIS POUR 99% RÉVISION	JAN 18/16
1.	ISSUED FOR 66% REVIEW/ EMIS POUR 66% RÉVISION	DEC 21/15

**MCKEE ENGINEERING**  
R.J. MCKEE  
ENGINEERING LTD.  
1785 Woodward Drive  
Ottawa, ON K2C 0P9  
CANADA  
Tel: (613) 723-9585  
Fax: (613) 723-9584  
www.mckeeottawa.ca

PROJECT:  
HEALTH CANADA/SANTÉ CANADA  
LCDC/LLCM  
AMENITIES PROJECT  
100 EGLANTINE DRIVEWAY  
OTTAWA, ON

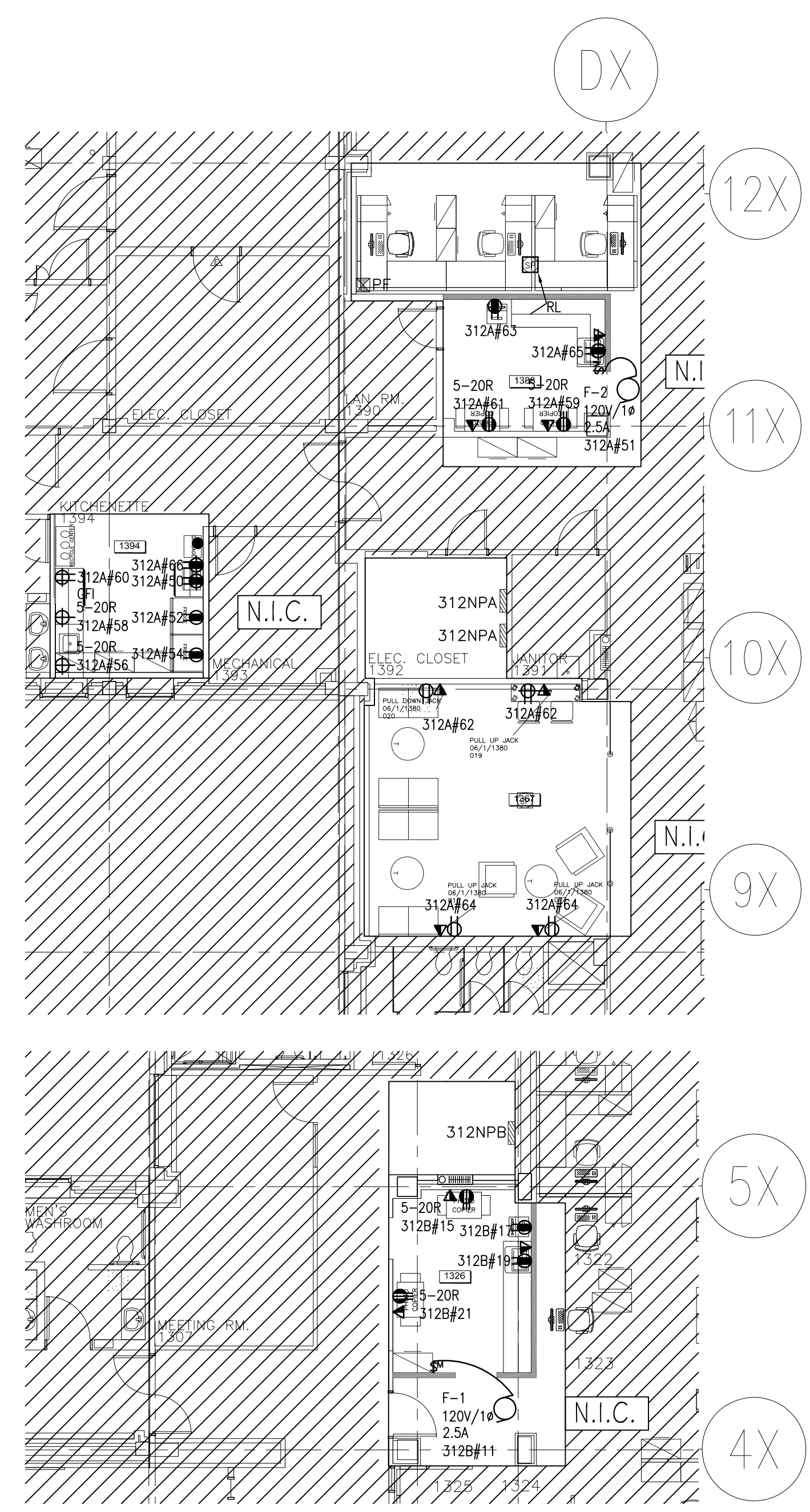
DRAWING:  
ELECTRICAL/ÉLECTRICITÉ:  
LIGHTING AND FIRE ALARM/  
ÉCLAIRAGE & SYSTÈME  
D'ALARME-INCENDIE

DATE:	DEC 2015
DESIGNED BY:	J.F.B.
DRAWN BY:	J.F.B.
CHECKED BY:	G.O.M.
SCALE:	AS SHOWN

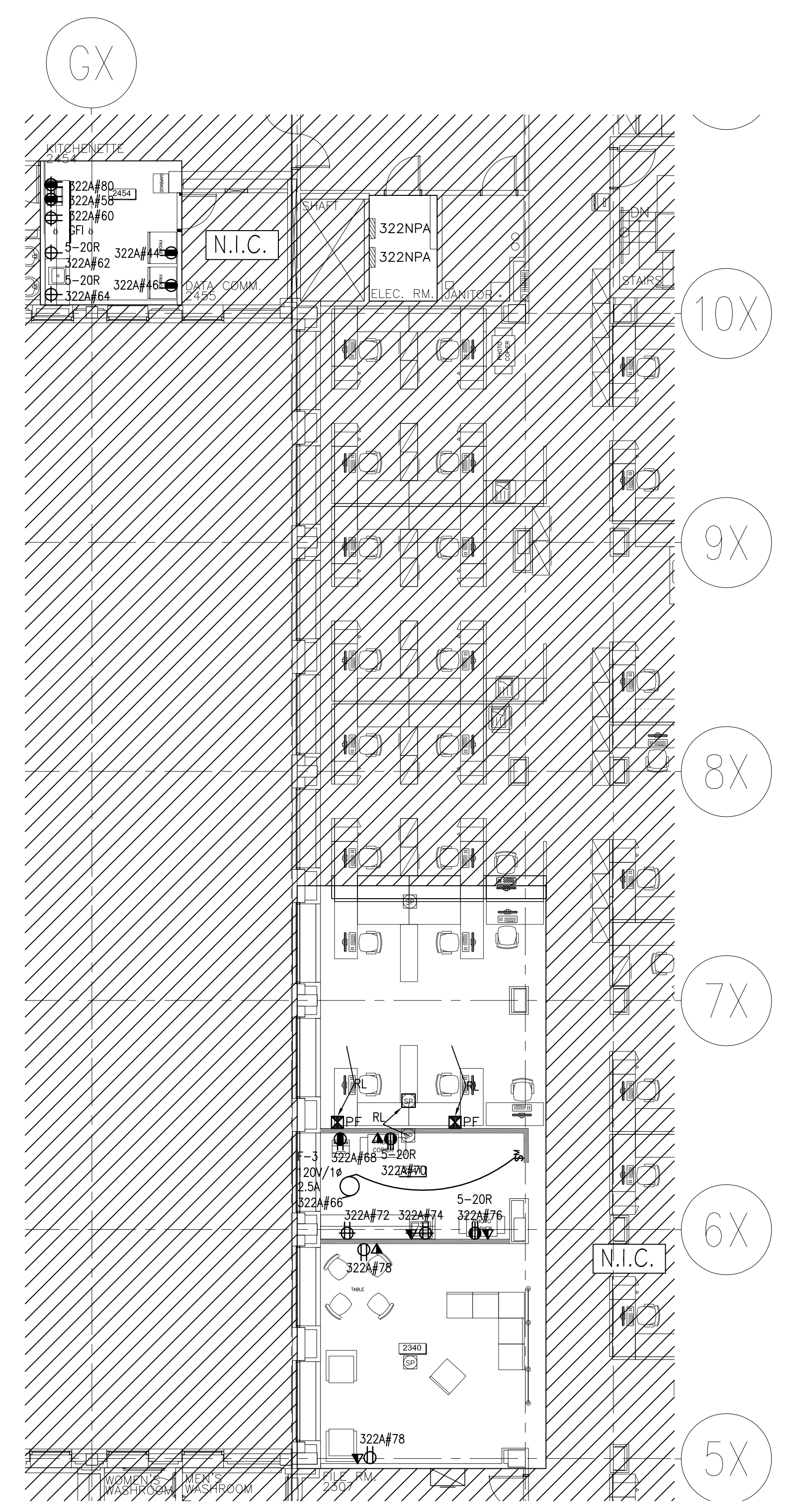
No. DWGS. 4	DRAWING No.
PROJECT No.	16026
	<b>E-2</b>

THESE DESIGN DOCUMENTS ARE PREPARED SOLELY FOR THE USE BY THE PARTY WITH WHOM THE DESIGN PROFESSIONAL HAS ENTERED INTO A CONTRACT AND THERE ARE NO REPRESENTATIONS OF ANY KIND MADE BY THE DESIGN PROFESSIONAL TO ANY PARTY WITH WHOM THE DESIGN PROFESSIONAL HAS NOT ENTERED INTO A CONTRACT.

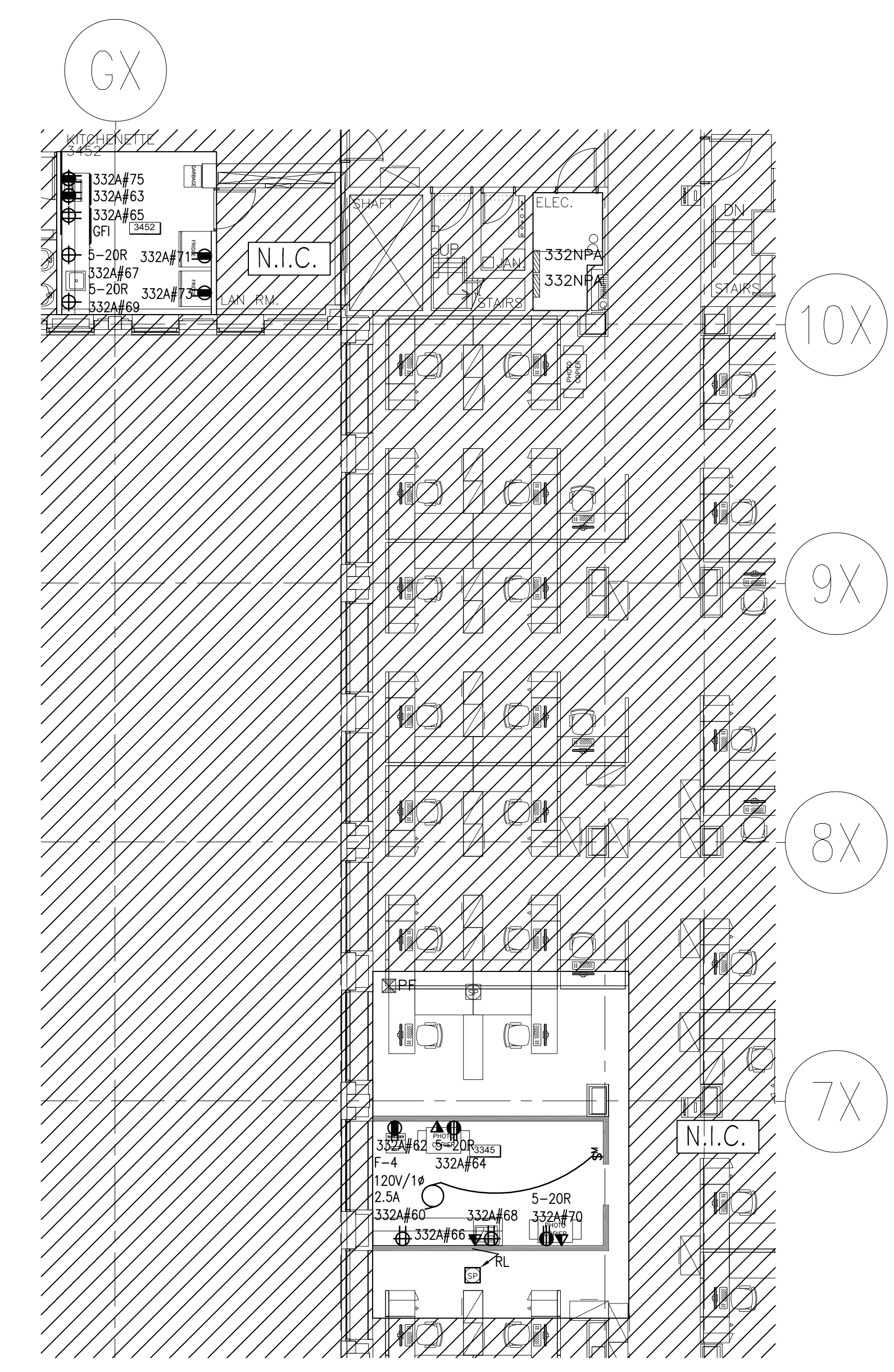
THE PAPER COPY OF THE DRAWINGS ISSUED FOR BUILDING PERMIT AND/OR TENDER WILL TAKE PRECEDENCE OVER ELECTRONIC COPIES.



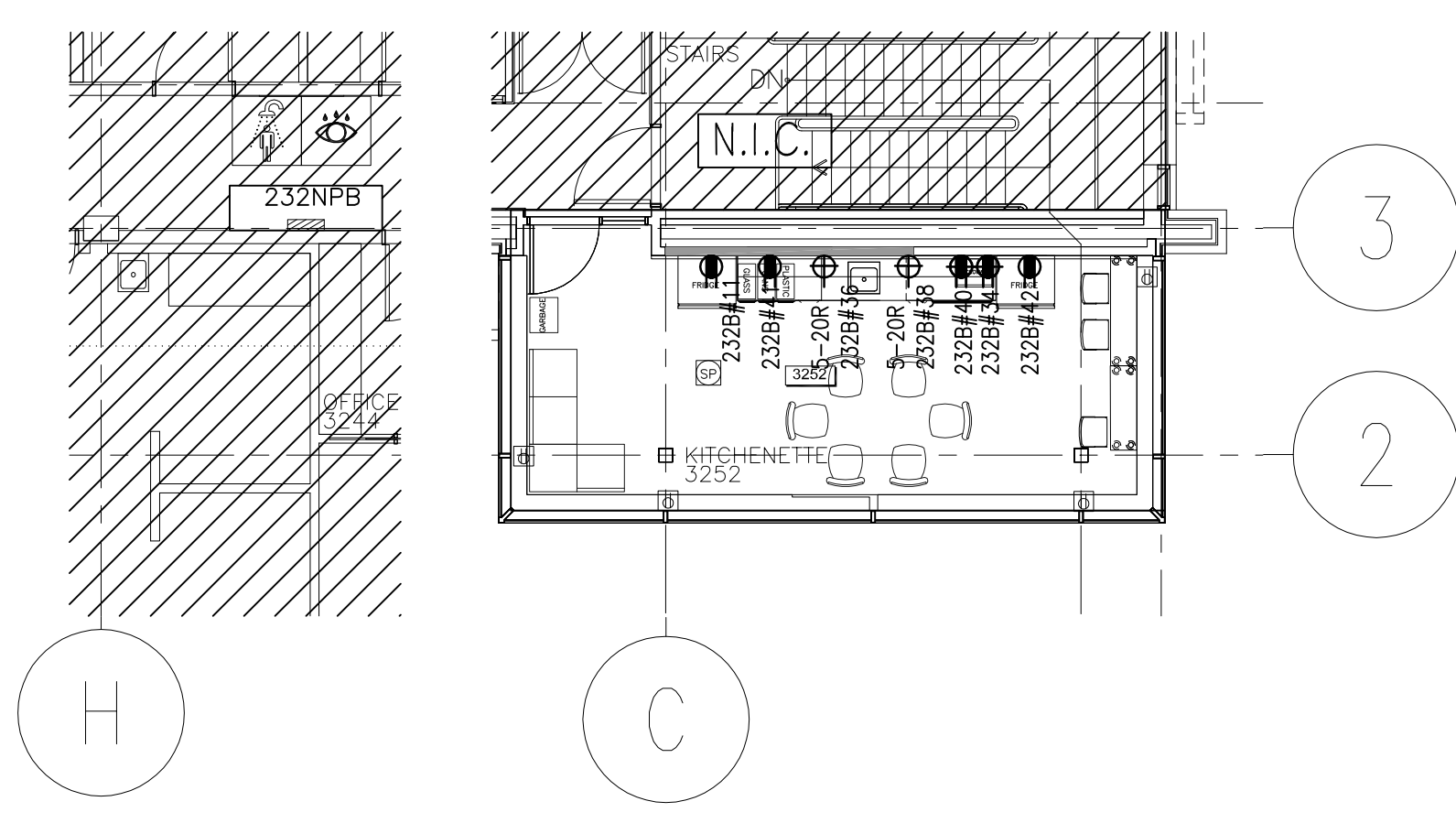
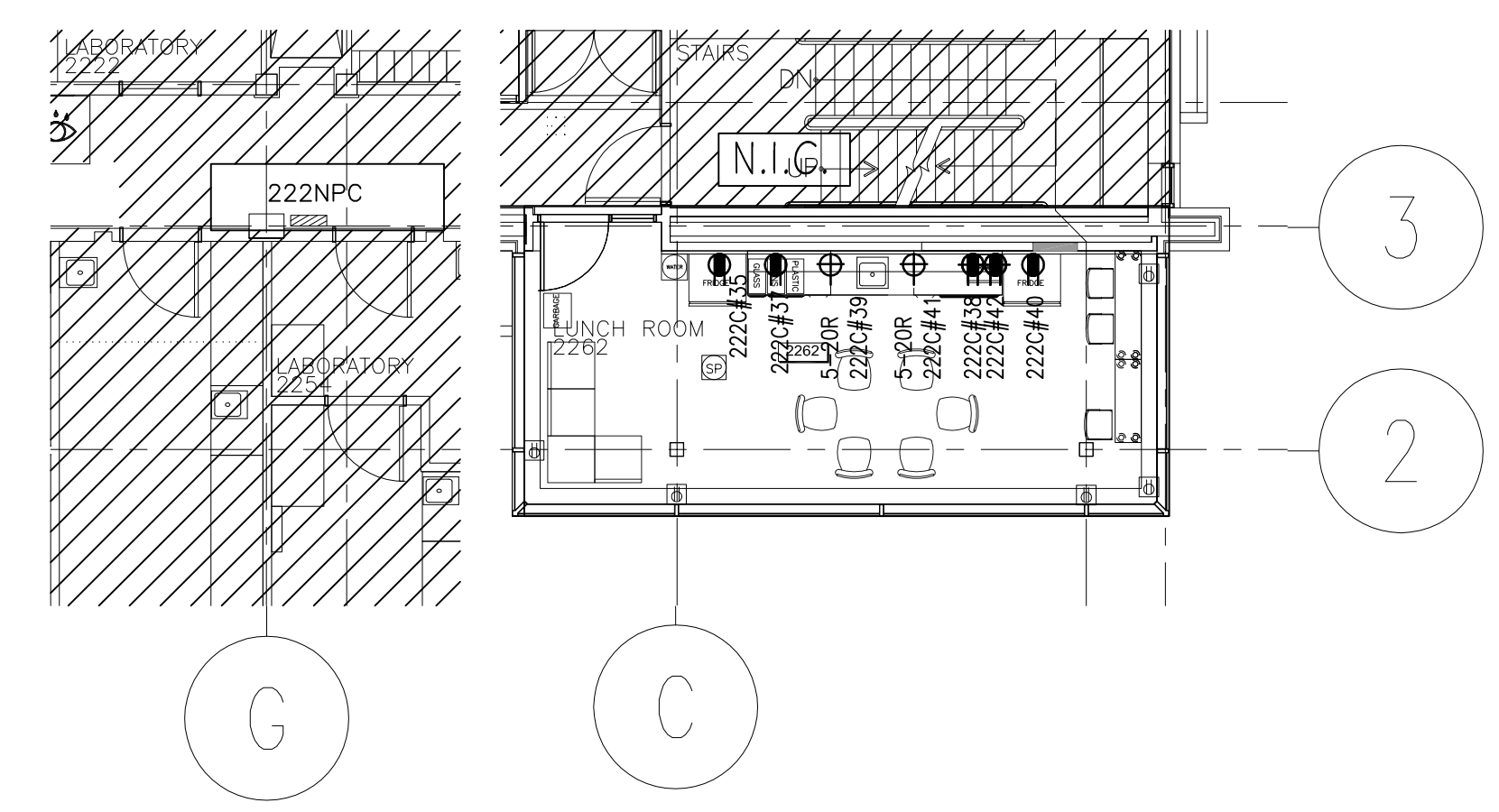
1 GROUND FLOOR POWER & SYSTEMS/  
E-3 POUVOIR ET SYSTÈMES DU REZ-DE-CHAUSSÉE  
1:100



2 2ND FLOOR POWER & SYSTEMS/  
E-3 POUVOIR ET SYSTÈMES 2E ÉTAGE  
1:100



3 3RD FLOOR POWER & SYSTEMS/  
E-3 POUVOIR ET SYSTÈMES 3E ÉTAGE  
1:100



REVISION No.	DESCRIPTION	DATE
3.	ISSUED FOR TENDER/ EMIS POUR SOUMISSION	FEB 1/16
2.	ISSUED FOR 90% REVIEW/ EMIS POUR 90% RÉVISION	JAN 18/16
1.	ISSUED FOR 60% REVIEW/ EMIS POUR 60% RÉVISION	DEC 21/15

**MCKEE ENGINEERING**  
R.J. MCKEE ENGINEERING LTD.  
1785 Woodward Drive  
Ottawa, ON K2C 0P9  
CANADA  
Tel: (613) 723-9585  
Fax: (613) 723-9584  
www.mckeeottawa.ca

PROJECT:  
HEALTH CANADA/SANTÉ CANADA  
LCDC/LLCM  
AMENITIES PROJECT  
100 EGLANTINE DRIVEWAY  
OTTAWA, ON

DRAWING:  
ELECTRICAL/ÉLECTRICITÉ:  
POWER & SYSTEMS/  
POUVOIR ET SYSTÈMES

DATE:	DEC 2015
DESIGNED BY:	J.F.B.
DRAWN BY:	J.F.B.
CHECKED BY:	G.O.M.
SCALE:	AS SHOWN

No. DWGS. 4	DRAWING No.
PROJECT No.	<b>E-3</b>
16026	