

Addendum/Addenda

No./N°

1

Project Description / Description de projet

S-77 Courtyard A Masonry Conservation Repairs

Solicitation No./ N° de sollicitation

16-22025

Project No./N° de projet

S-77 4089

W.O. No./N° d'ordre de travail

A1-006436-01

Departmental Representative /
Représentant Ministériel

Kirk Williams

Date

May 30, 2016

Notice:

This addendum shall form part of the tender documents and all conditions shall apply and be read in conjunction with the original plans and specifications.

Nota:

Cet addenda fait partie intégrale des dossiers d'appel d'offres; toutes les conditions énoncées doivent être lues et appliquées en conjonction avec les plans et les devis originaux.

Attached memo and drawing # 4089-S01 indicates the requirements to protect the existing roof prior to installing the scaffolding and throughout construction period.



Leibe Engineering Associates

Ralph Leibe, P.Eng.
Paul McCarthy, P.Eng.
Dan Desjardins, Tech.

James Diamond, P.Eng.
Paul Mace, P.Eng.
Matthew Phipps, Tech.

Consulting Engineers
Ingénieurs-conseils

22 Antares Drive, Suite 201, Nepean, Ontario. K2E 7Z6 Telephone: (613) 723 - 7765 Fax: (613) 723 - 0095

DATE: 05/25/16 (Revised)

MEMO / AVIS

PROJECT: BUILDING S-77 – SCAFFOLDING IN COURTYARD 'A'
PROJET: FOR PROPOSED RE-POINTING OF MASONRY WALLS

COPY TO:

ATTENTION: Chris Day

COPIE A:

RE: LOADINGS ON LOW ROOF

We have reviewed the loads from the proposed scaffolding on the low roof of Courtyard 'A', and have the following recommendations:

1. The proposed scaffolding must rest on the 8"x 8" timbers placed on the roof in accordance with Drawing 4089-S01.
2. The 8"x 8" sleepers may rest directly on the existing roofing.
3. Place plywood protection on the roof in traffic areas.
4. Do not place equipment, or stockpile materials on the roof.
5. The Contractor must not work on more than one level of scaffolding at any location.
6. The Contractor must not work in the winter.
7. The design of the scaffolding must take into account existing vertical and horizontal ducts, and existing roof penetrations.

Ralph Leibe, P. Eng.

GENERAL NOTES:

- THE CONTRACTOR SHALL SUBMIT PROPOSED SCAFFOLD SHOP DRAWINGS WHICH SHALL BE DESIGNED FOR A LIVE LOAD OF 2.40 KPa (50 LBS/SQ. FT.).
- COMPLY WITH ALL CANADIAN AND ONTARIO LABOUR AND SAFETY CODES.
- COMPLY WITH THE OCCUPATIONAL HEALTH AND SAFETY ACT AND REGULATIONS FOR CONSTRUCTION PROJECTS FROM THE ONTARIO MINISTRY OF LABOUR.
- NO STORAGE OF MATERIAL IS PERMITTED ON SCAFFOLDING.

HI National Resources
 Consulting Engineers
 22 Avenue Drive, Suite 201
 Mississauga, Ontario L4V 1P4
 Tel: (905) 272-7789 Fax: (905) 272-4095

ARC - CERC
 Registered Professional Engineer
 Ontario

Leib Engineering Associates
 Consulting Engineers / Ingenieurs-Consultants
 22 Avenue Drive, Suite 201
 Mississauga, Ontario L4V 1P4
 Tel: (905) 272-7789 Fax: (905) 272-4095



Project No. 4089-S01
 Drawing No. S01

Date: 1 MAY 2016
 Issued For Tender: PRELIMINARY
 Revision: 0

Title: BUILDING S-77
 REPOINTING MASONRY IN
 COURTYARD 'A'

Scale: 1/4" = 1'-0"
 Section: 104

Scale: 1/4" = 1'-0"
 Section: 103

Scale: 1/4" = 1'-0"
 Section: 102

Scale: 1/4" = 1'-0"
 Section: 101

Scale: 1/4" = 1'-0"
 Section: 105

Scale: 1/4" = 1'-0"
 Section: 103

Scale: 1/4" = 1'-0"
 Section: 104

Scale: 1/4" = 1'-0"
 Section: 103

Scale: 1/4" = 1'-0"
 Section: 103

Scale: 1/4" = 1'-0"
 Section: 103

Scale: 1/4" = 1'-0"
 Section: 103

Scale: 1/4" = 1'-0"
 Section: 103

Scale: 1/4" = 1'-0"
 Section: 103

Scale: 1/4" = 1'-0"
 Section: 103

Scale: 1/4" = 1'-0"
 Section: 103

Scale: 1/4" = 1'-0"
 Section: 103

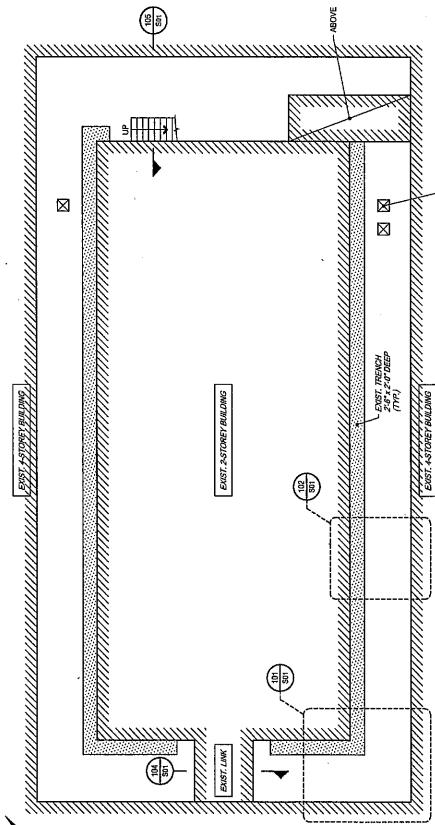
Scale: 1/4" = 1'-0"
 Section: 103

Scale: 1/4" = 1'-0"
 Section: 103

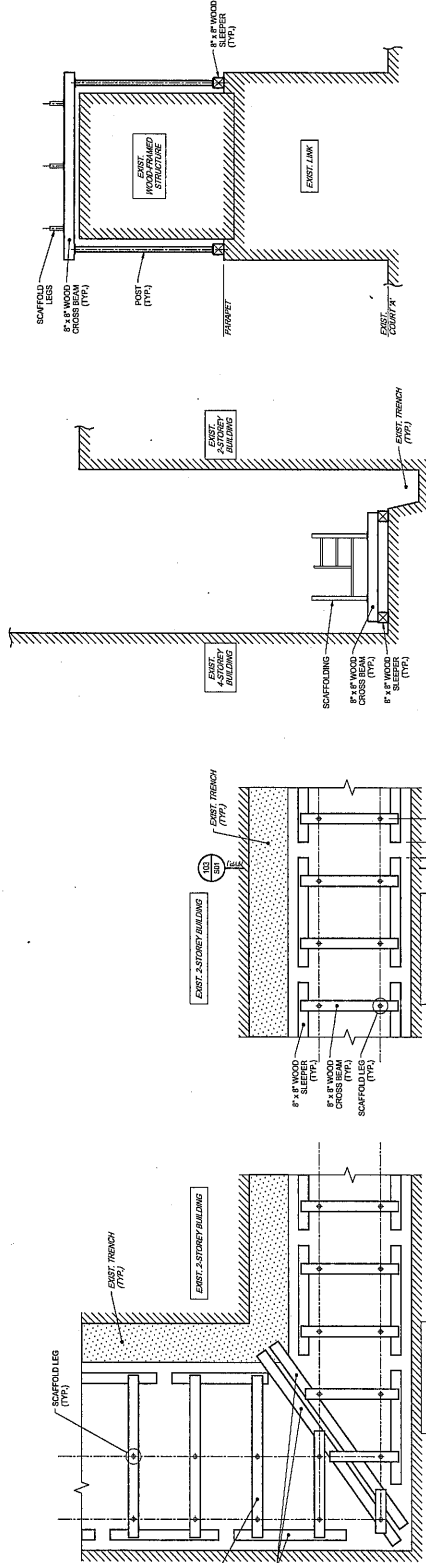
Scale: 1/4" = 1'-0"
 Section: 103

Scale: 1/4" = 1'-0"
 Section: 103

Scale: 1/4" = 1'-0"
 Section: 103



PLAN - COURTYARD 'A'
SCALE 3/32" = 1'-0"



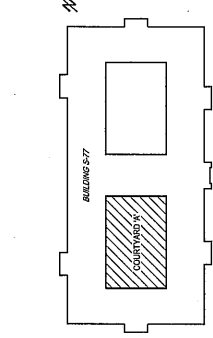
SECTION 104
SCALE 1/4" = 1'-0"

SECTION 103
SCALE 1/4" = 1'-0"

PLAN DETAIL 102
SCALE 1/4" = 1'-0"

PLAN DETAIL 101
SCALE 1/4" = 1'-0"

SECTION (AT STAIR) 105
SCALE 1/4" = 1'-0"



KEY PLAN
N.T.S.