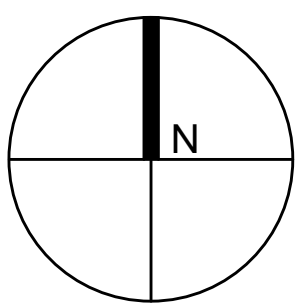


ISSUED FOR TENDER	NOV 27, 2015
ISSUED FOR FINAL REVIEW	NOV 17, 2015
75% SUBMISSION	OCT 31, 2015

DESCRIPTION	NO.	DATE

DISCLAIMER	REVISIONS	COPYRIGHT



DRAWN JimW	SCALE AS NOTED
CHECKED	DATE NOVEMBER 2015
APPROVED	

CLIENT
Parks Canada

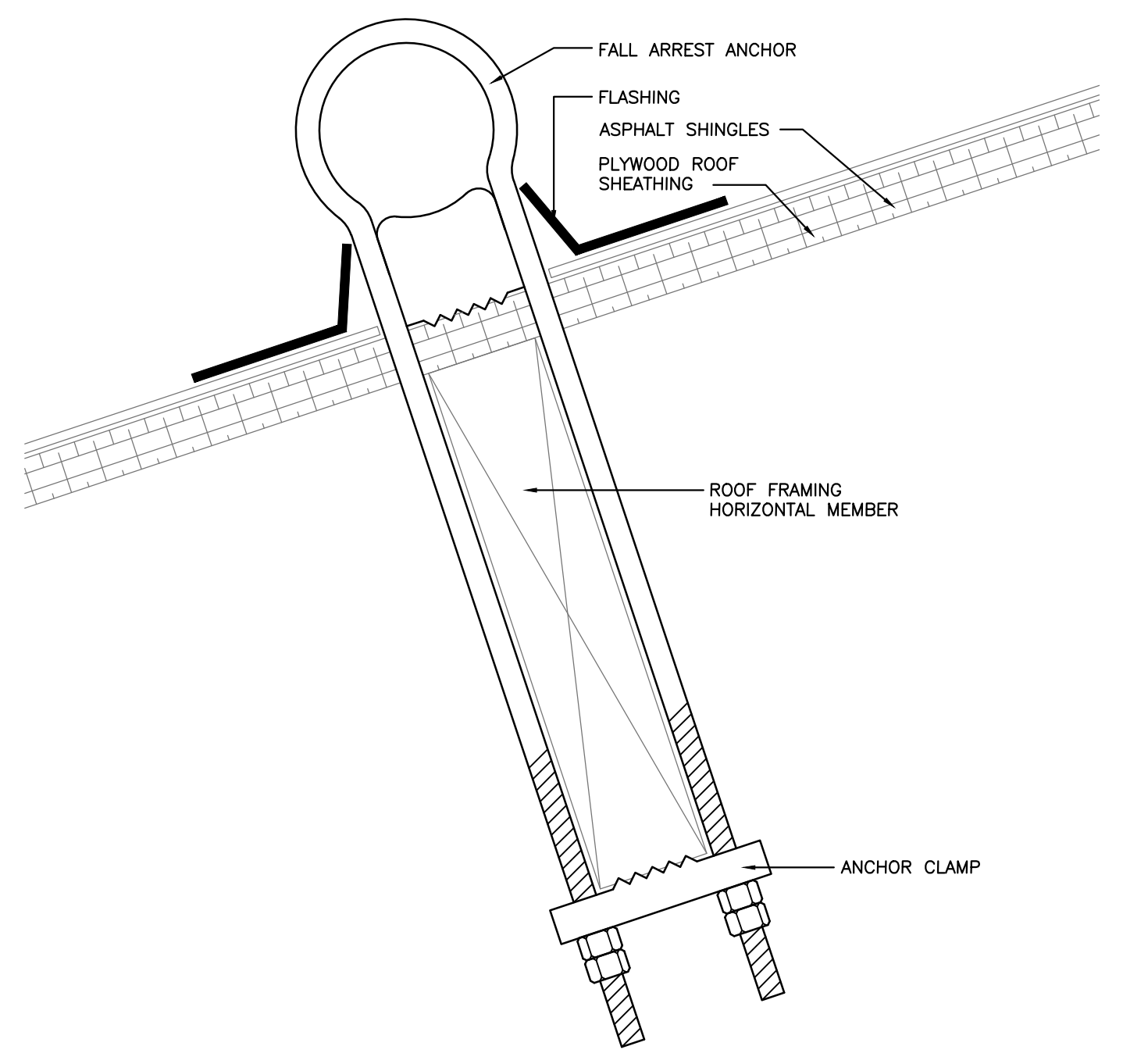
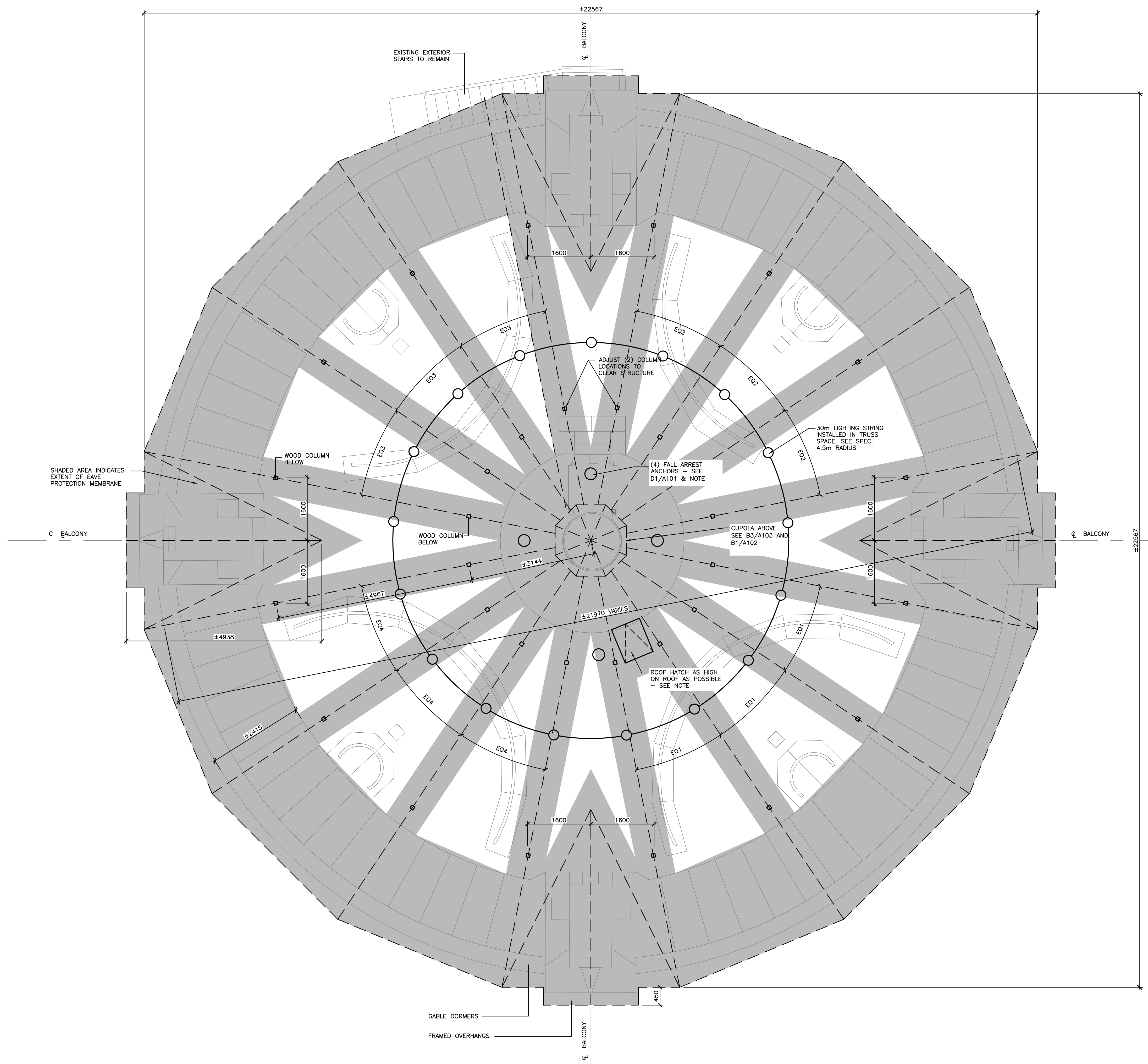
PROJECT
**Prince of Wales Tower
Point Pleasant Park**

HALIFAX NOVA SCOTIA
TITLE
UPPER LEVEL PLAN

PROJECT NO.	151-09746-00
DWG. NO.	ISSUE NO.

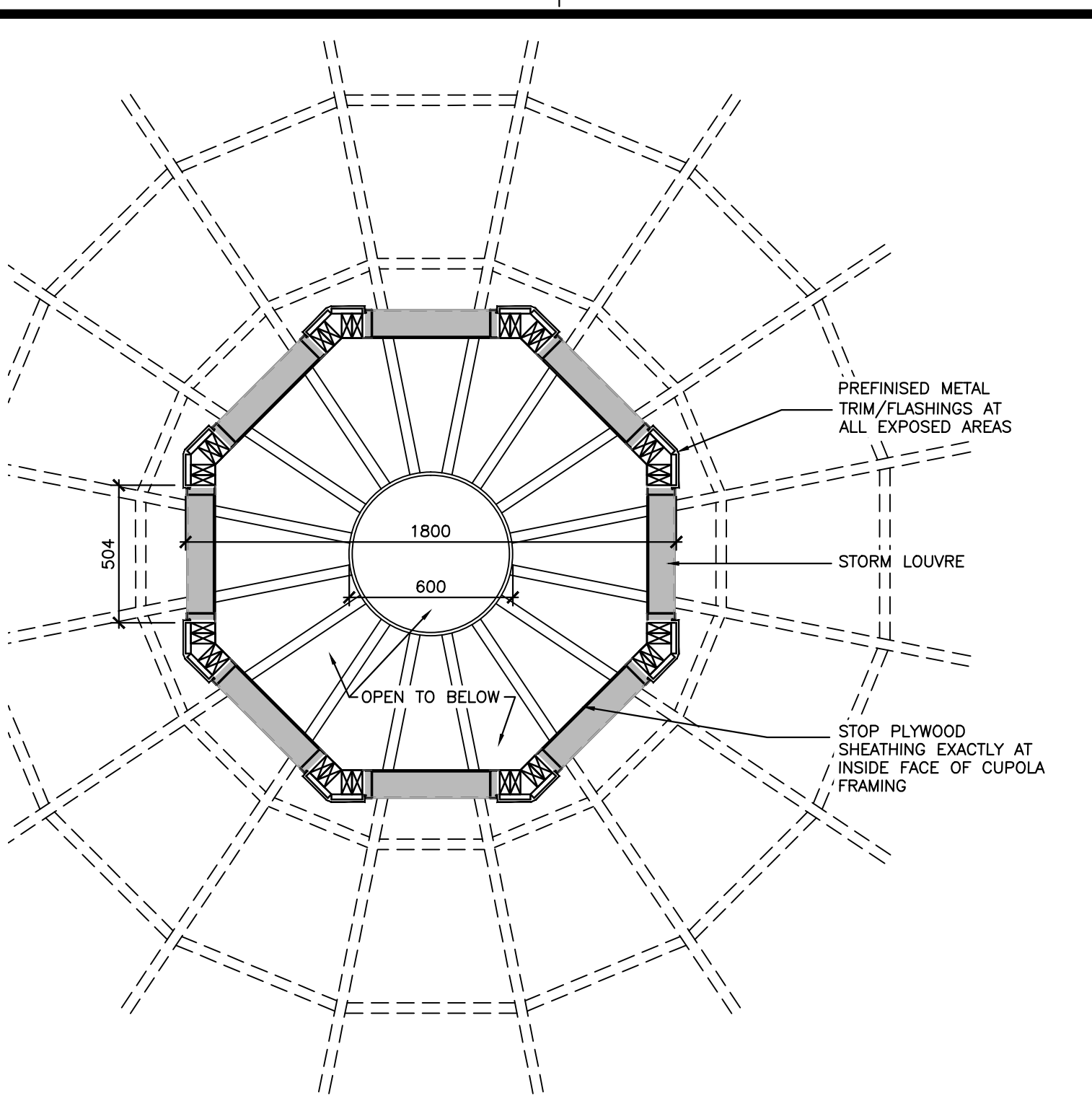
A-101

NOTES:
BALCONY LOCATIONS ARE NOT 90° APART. VERIFY LOCATIONS ON SITE AND LAY OUT COLUMN LOCATIONS TO BE CENTERED ON BALCONIES AS SHOWN. REMAINING COLUMNS, SPACED EQUIDISTANTLY BETWEEN BALCONIES.
PRIOR TO CONSTRUCTION / FABRICATION OF FRAMING CONTRACTOR IS TO CONFIRM ASFOUND DIMENSIONS AND LEVELNESS OF THE EXISTING STRUCTURE.
EAVE PROTECTION MEMBRANE BOTTOM 3000 OF ROOF, ENTIRE DORMER AND CUPOLA ROOF SURFACES, AND ONE ROW AT RIDGES
ROOF HATCH NOTE:
VERIFY REQUIRED ROOF OPENING DIMENSIONS FOR HATCH AND LOCATE HATCH AS HIGH ON ROOF AS THE DISTANCE BETWEEN TRUSSES WILL ACCOMMODATE.
THE PROVISION OF FALL ARREST AND SECUREMENT DETAILING IS TO BE PROVIDED BY THE SUPPLIER, WITH ENGINEERED STAMPED SHOP DRAWINGS.

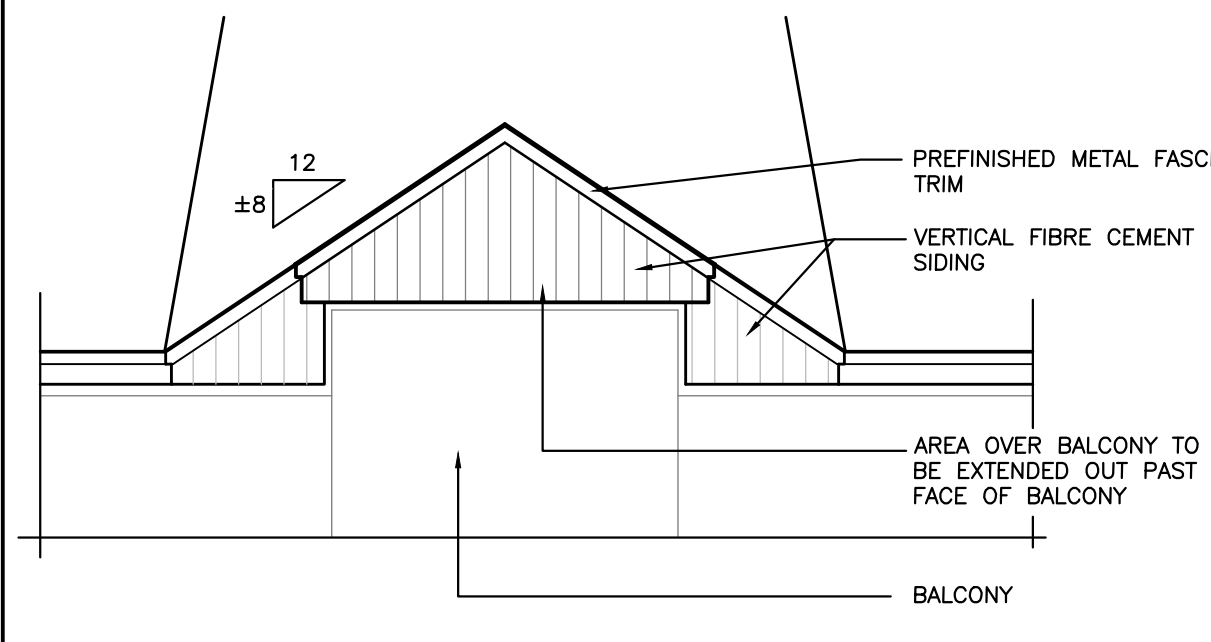


1:2 **D1** FALL ARREST ANCHOR DETAIL
A-101

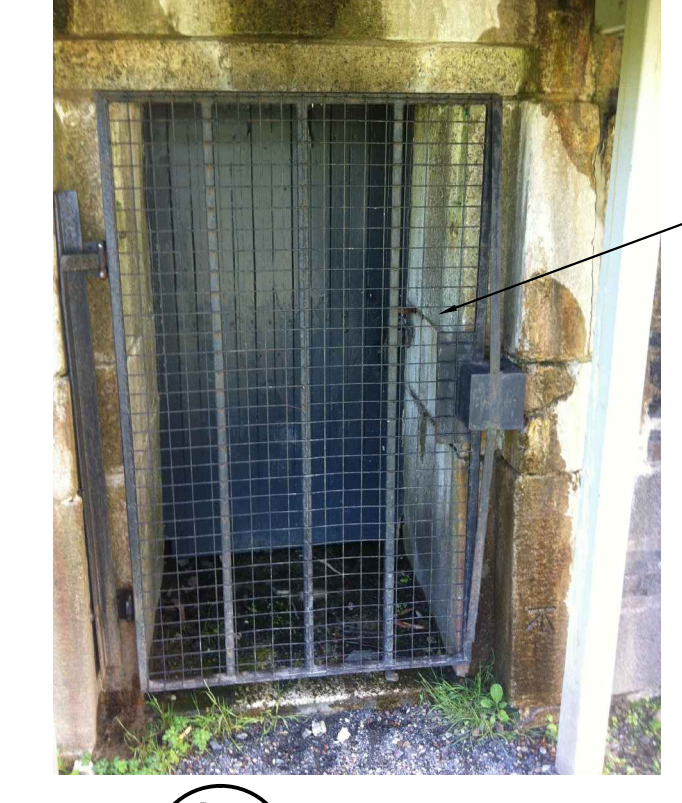
1:50 **D2** UPPER LEVEL PLAN
A-101



1:20 **B1** CUPOLA FRAMING PLAN
A-102



1:50 **A2** DORMER ELEVATION AT BALCONIES
A-102



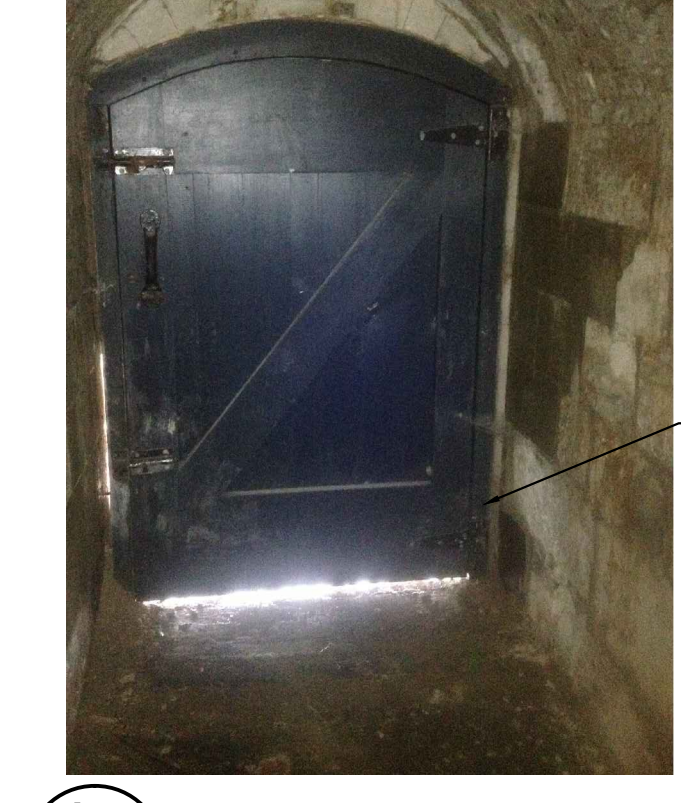
NTS **A3** SECURITY GATE
A-102

REMOVE LIGHT GAUGE WIRE FROM EXISTING SECURITY GATE. ADD A VENTED STEEL PLATE FOR THE FULL SIZE FOR THE GATE. PAINT GATE AND HARDWARE WITH RUST PAINT.



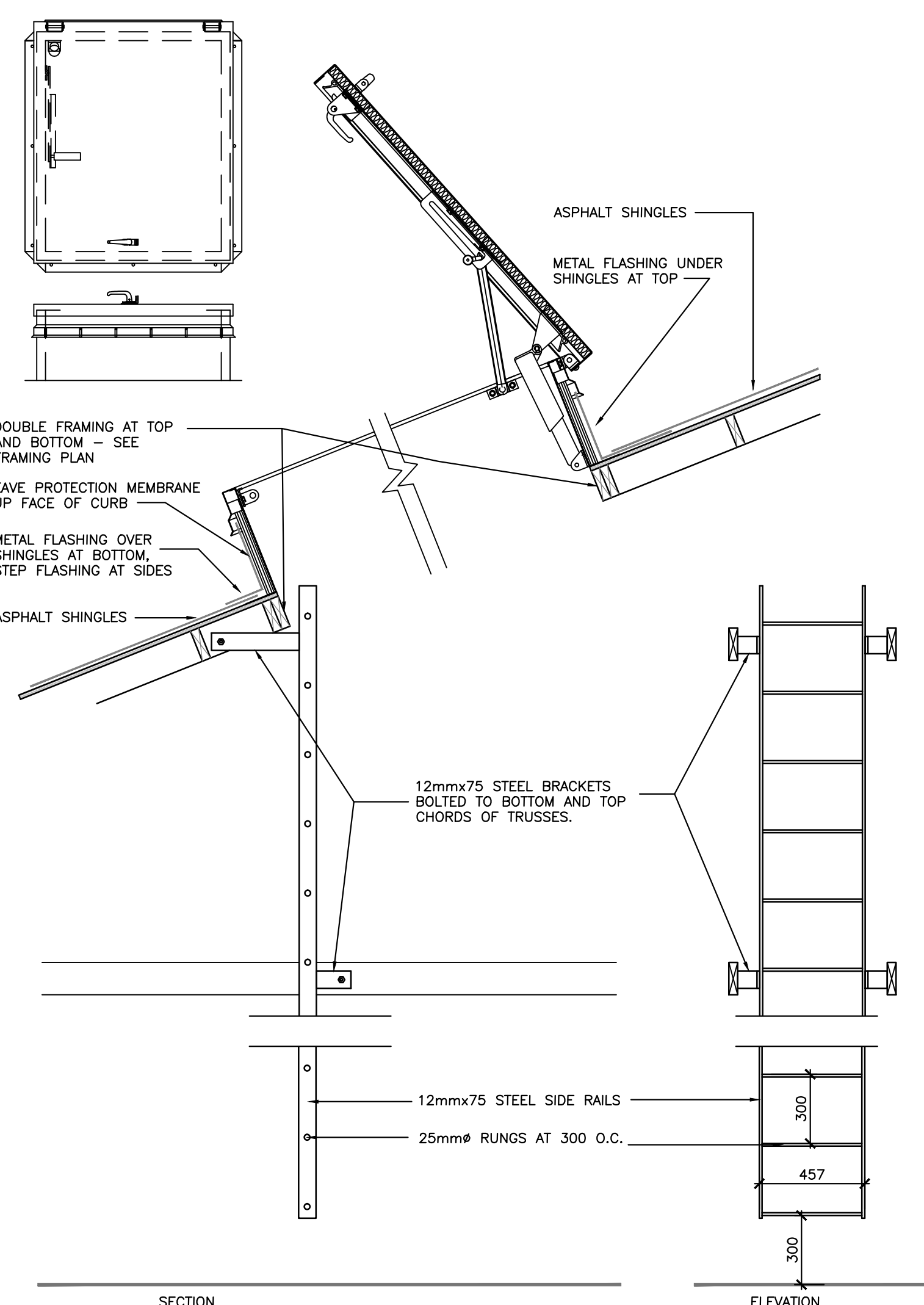
NTS **A4** LOWER FLOOR EXTERIOR DOOR
A-102

REPLACE BOTTOM RAIL AND BOTTOM OF SILL ON EXISTING DOOR WITH LIKE MATERIAL, SIZE AND PROFILE. PAINT DOOR AND FRAME. ADD SWEEP TO EXTERIOR SIDE OF DOOR.

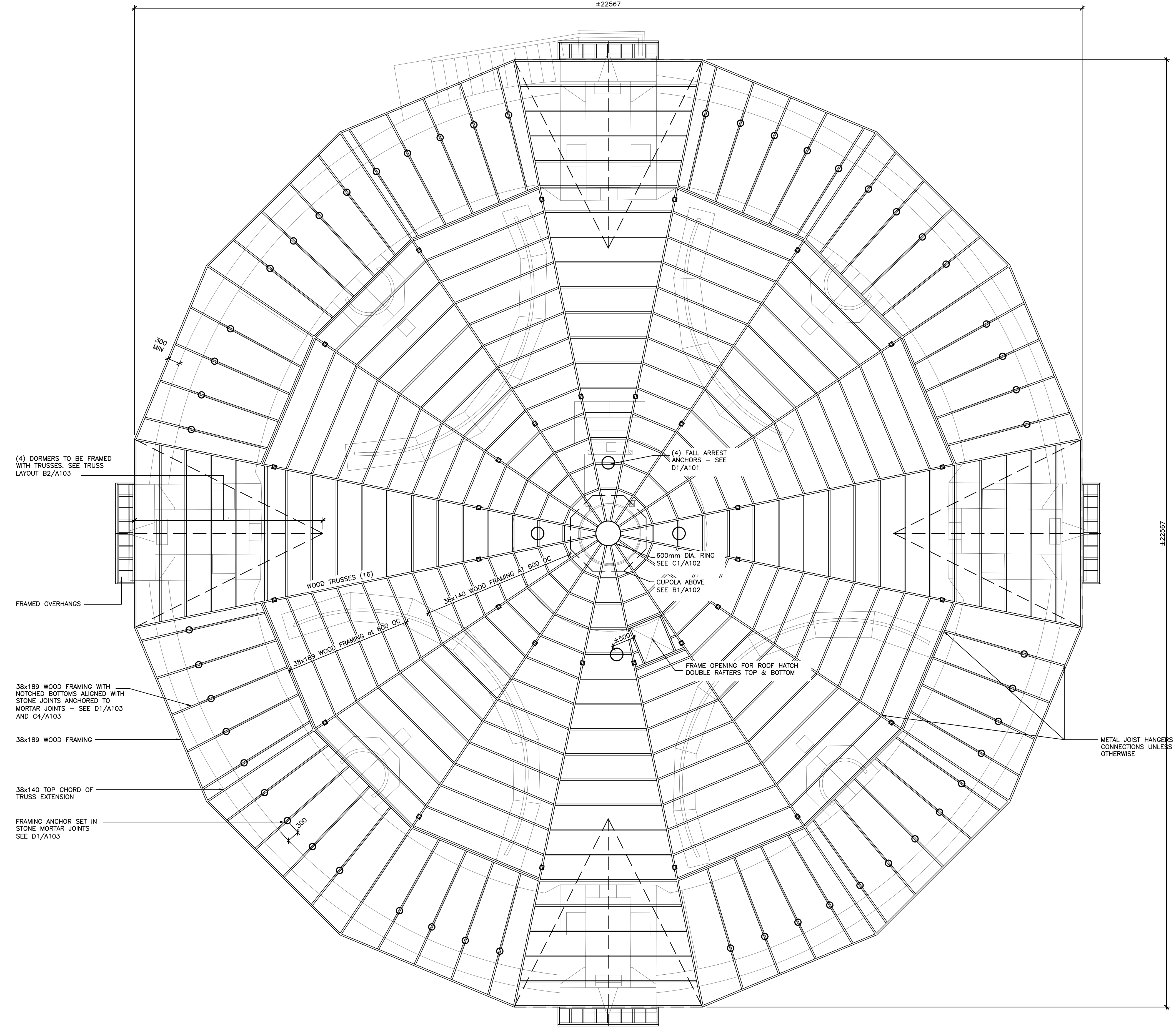


NTS **A5** UPPER FLOOR EXTERIOR DOOR
A-102

REPLACE EXISTING DOOR FRAME JAMBS WITH LIKE MATERIAL, SIZE AND PROFILE. PAINT DOOR AND FRAME. ADD SWEEP TO EXTERIOR SIDE OF DOOR.



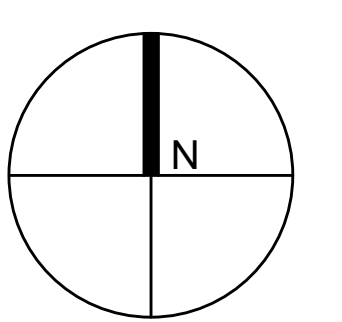
1:20 **D1** ROOF HATCH DETAIL
A-102



1:50 **D2** ROOF FRAMING PLAN
A-102

ISSUED FOR TENDER	NOV 27, 2015
ISSUED FOR FINAL REVIEW	NOV 17, 2015
75% SUBMISSION	OCT 31, 2015
DESCRIPTION	NO. DATE

DISCLAIMER	REVISIONS	COPYRIGHT
------------	-----------	-----------



DRAWN	SCALE
JimW	AS NOTED
CHECKED	DATE
	NOVEMBER 2015
APPROVED	

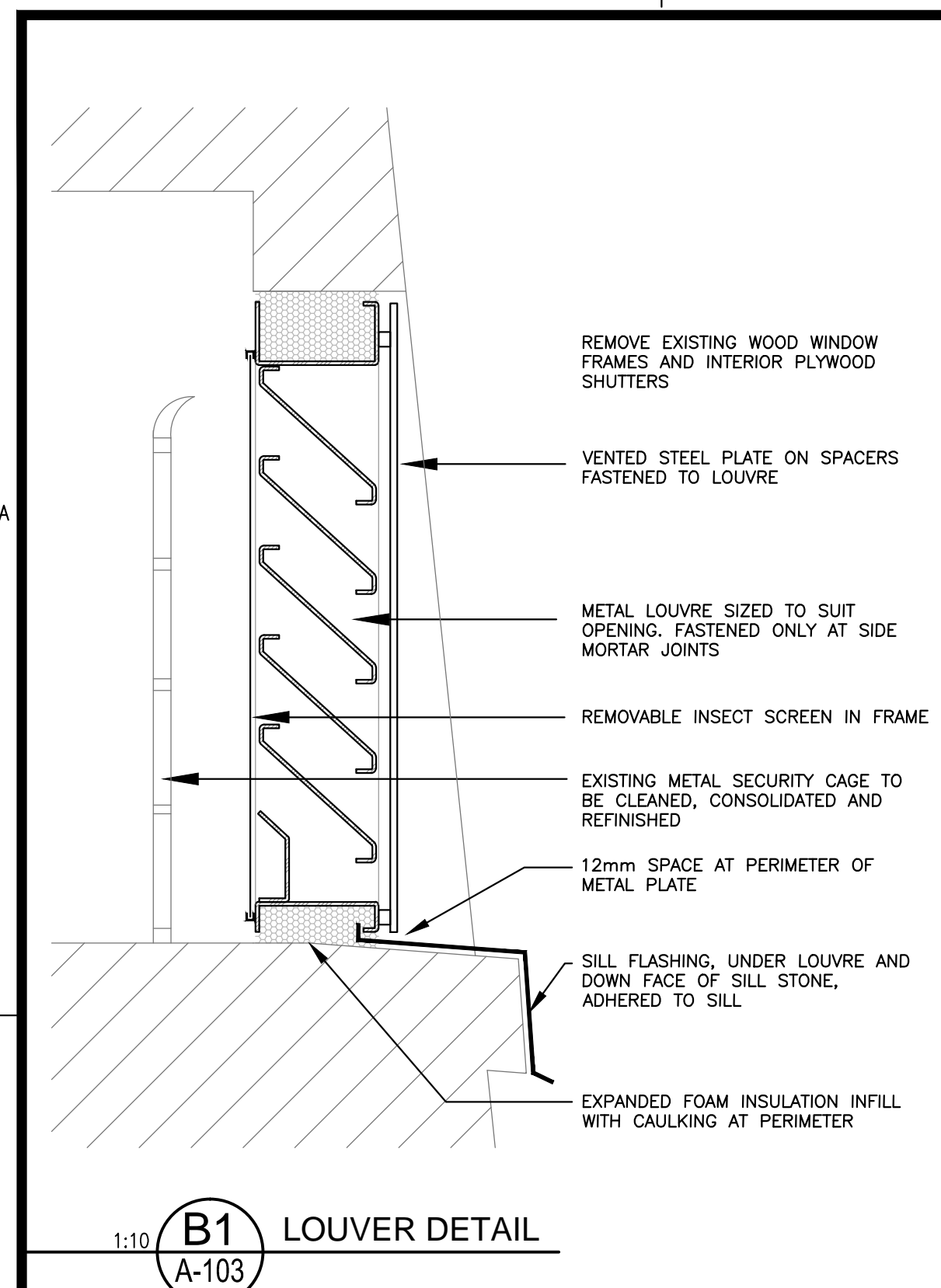
CLIENT
Parks Canada

PROJECT
Prince of Wales Tower
Point Pleasant Park

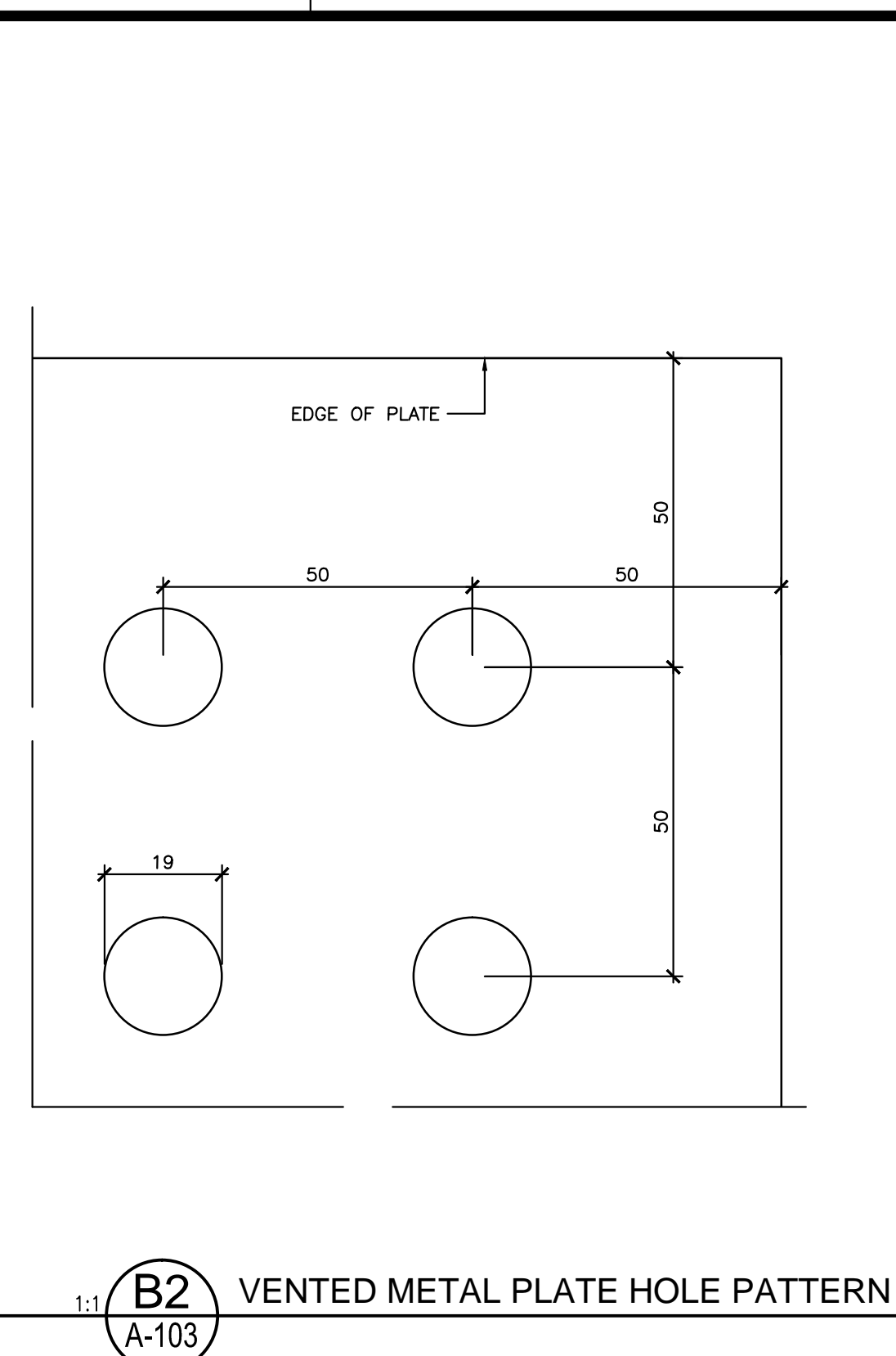
HALIFAX NOVA SCOTIA
TITLE
ROOF FRAMING PLAN

PROJECT NO.	151-09746-00
DWG. NO.	ISSUE NO.

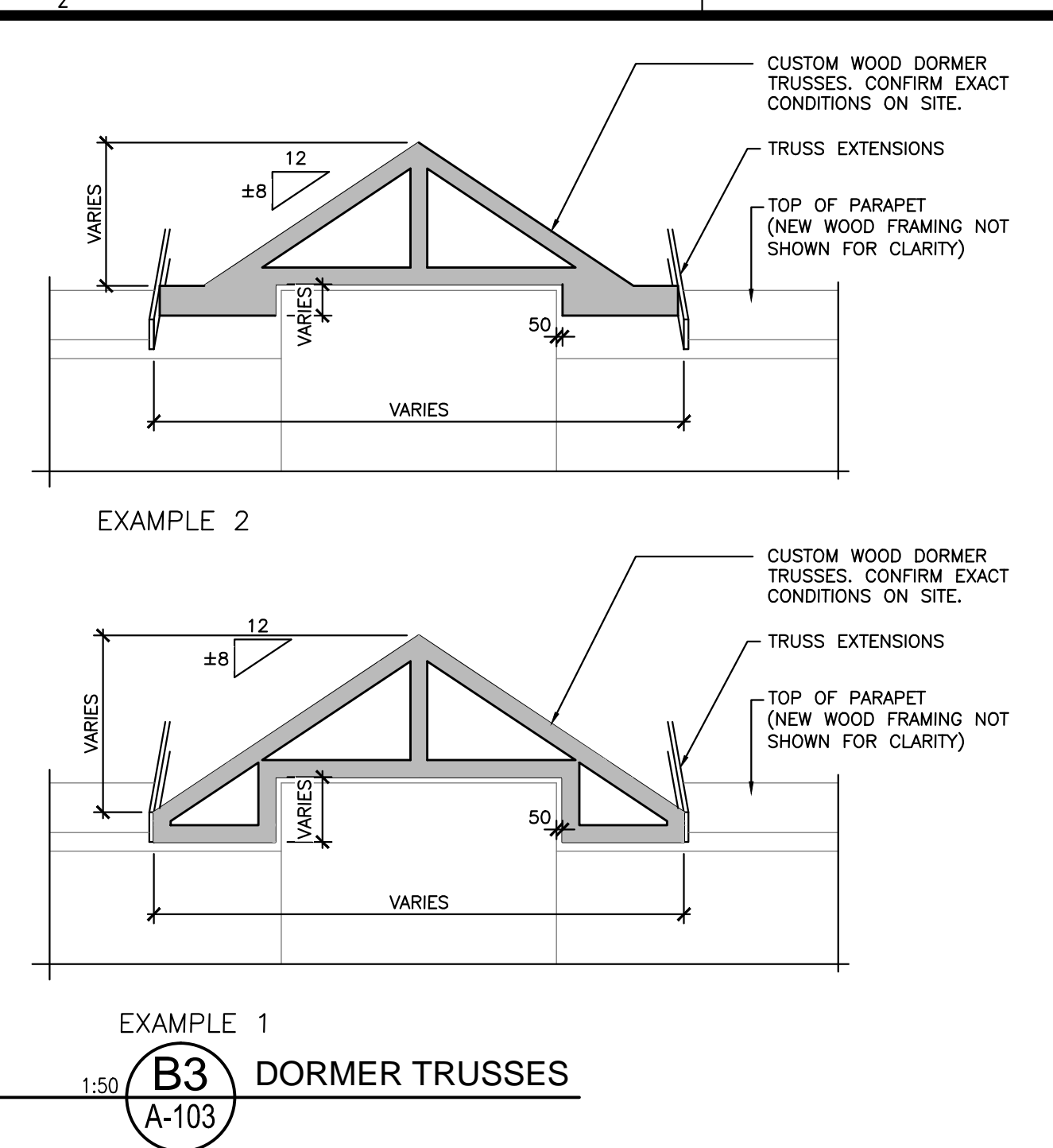
A-102



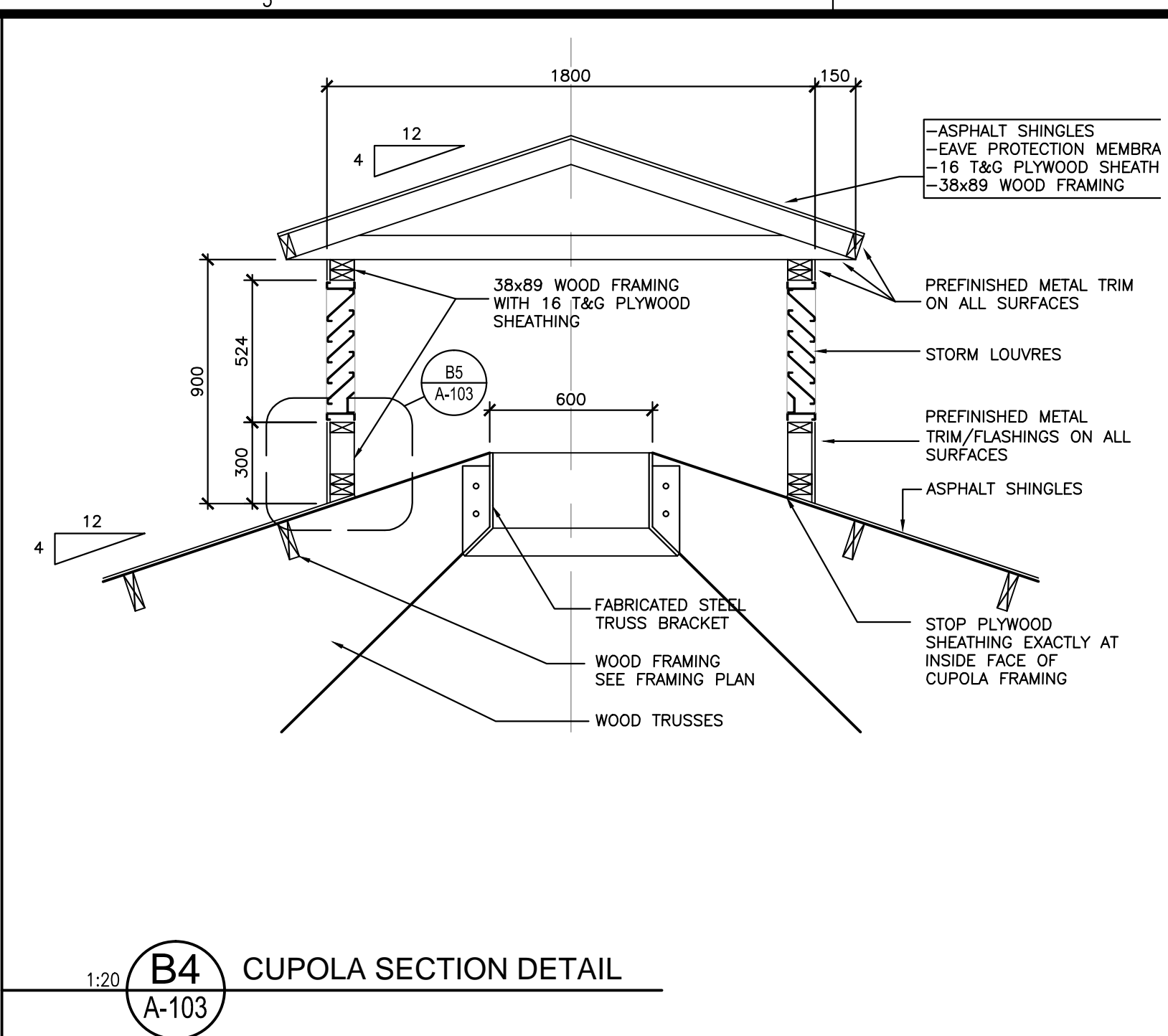
1:10 **B1** LOUVER DETAIL
A-103



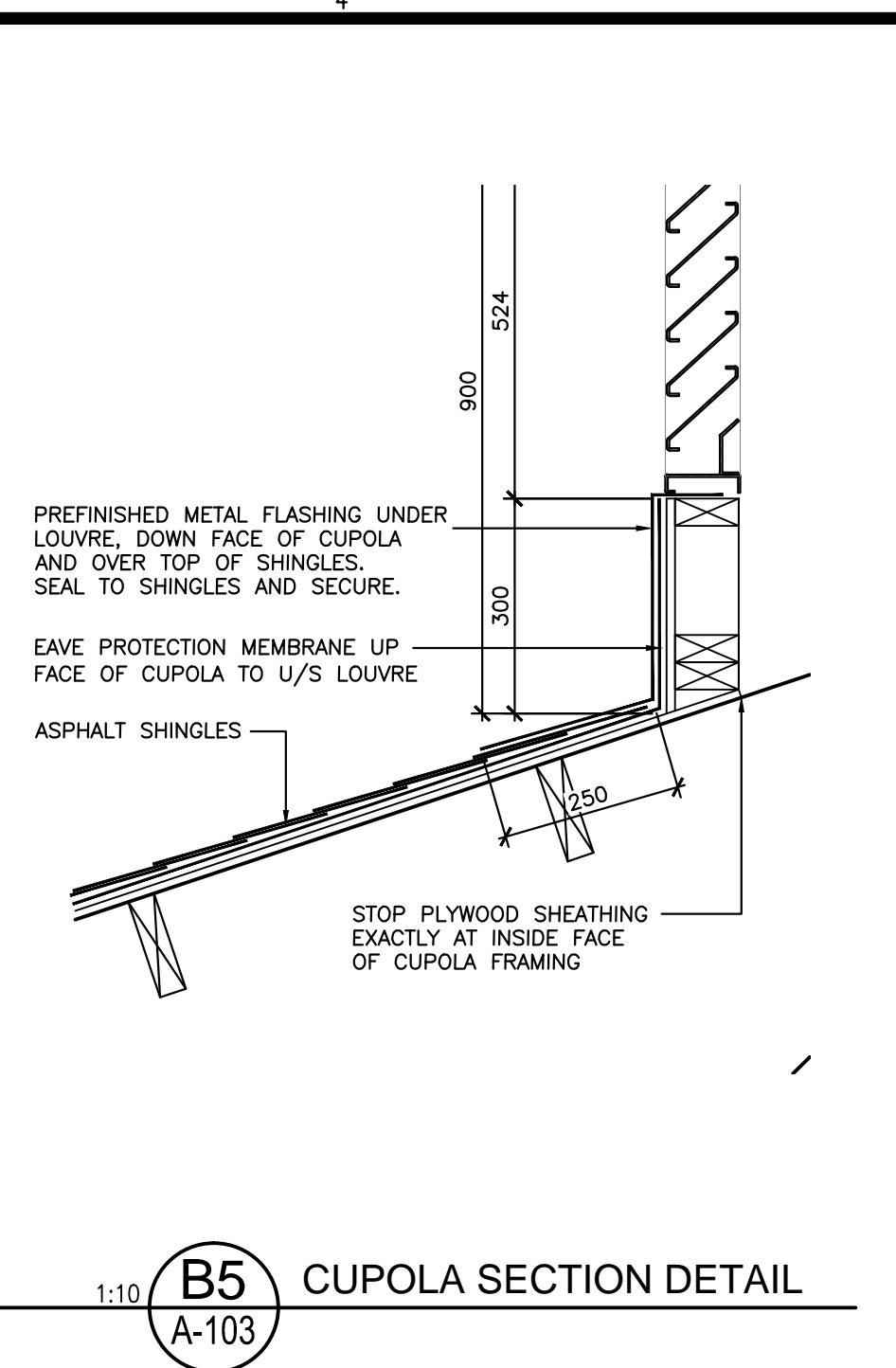
1:1 **B2** VENTED METAL PLATE HOLE PATTERN
A-103



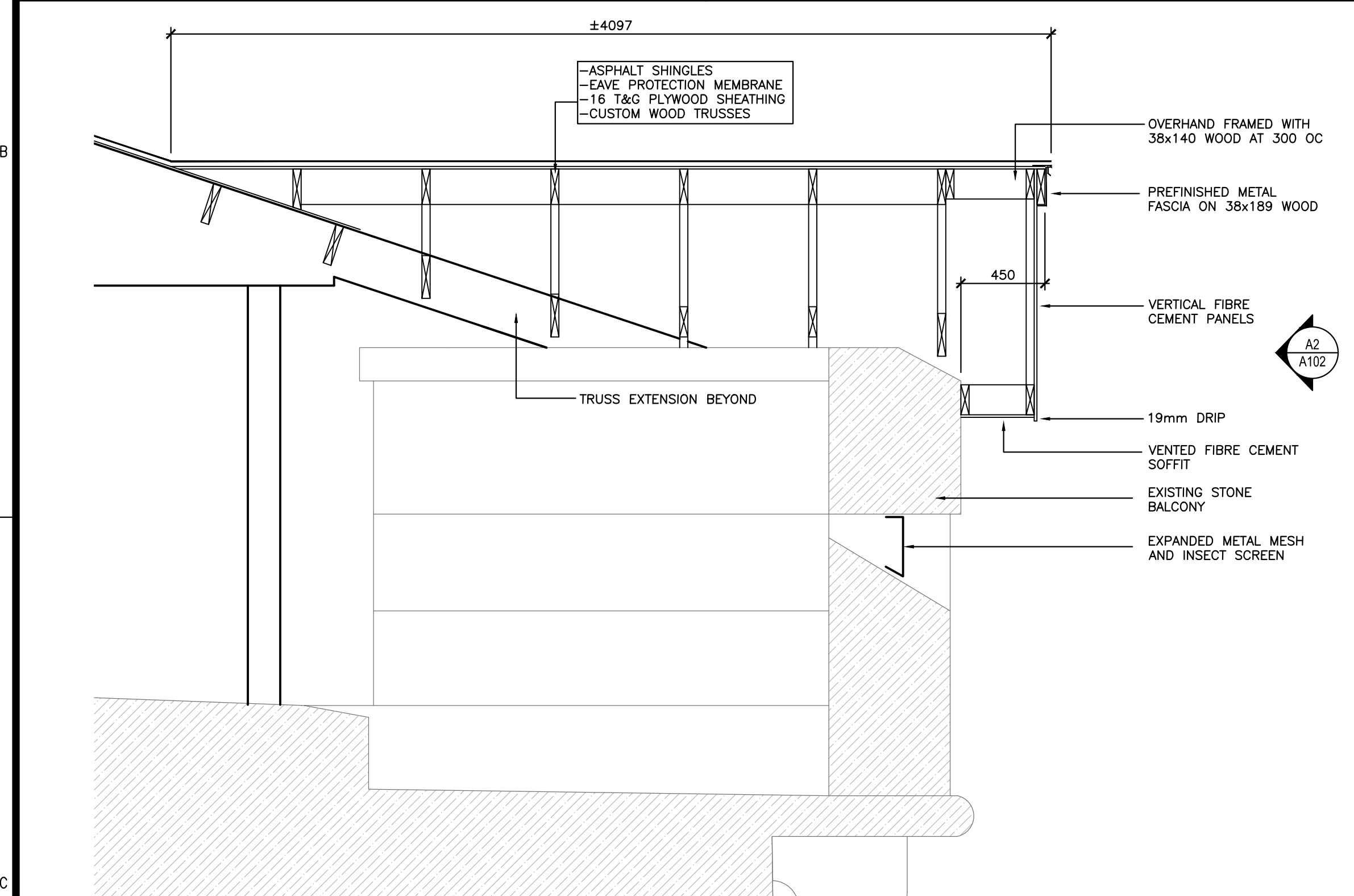
1:50 **B3** DORMER TRUSSES
A-103



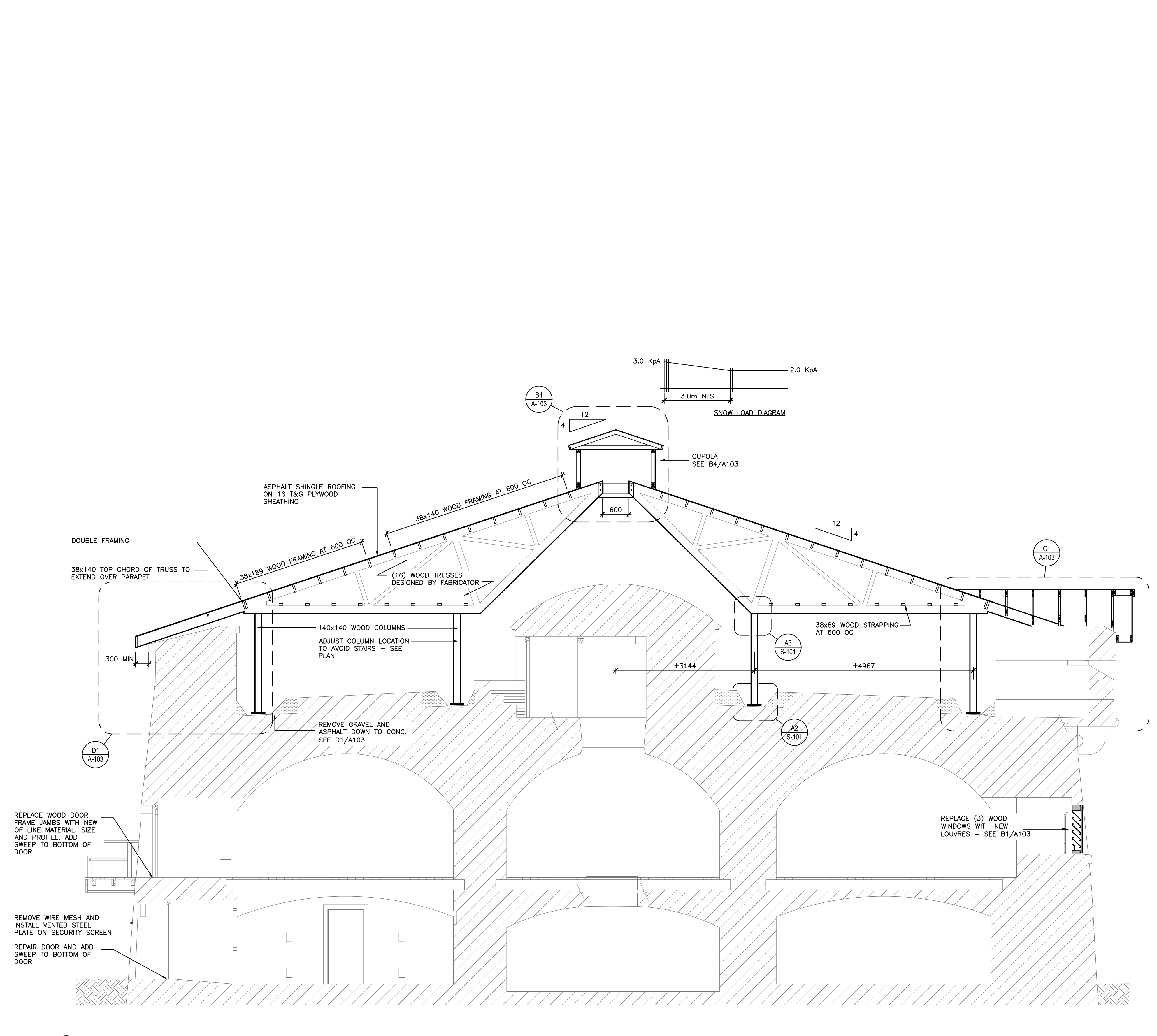
1:20 **B4** CUPOLA SECTION DETAIL
A-103



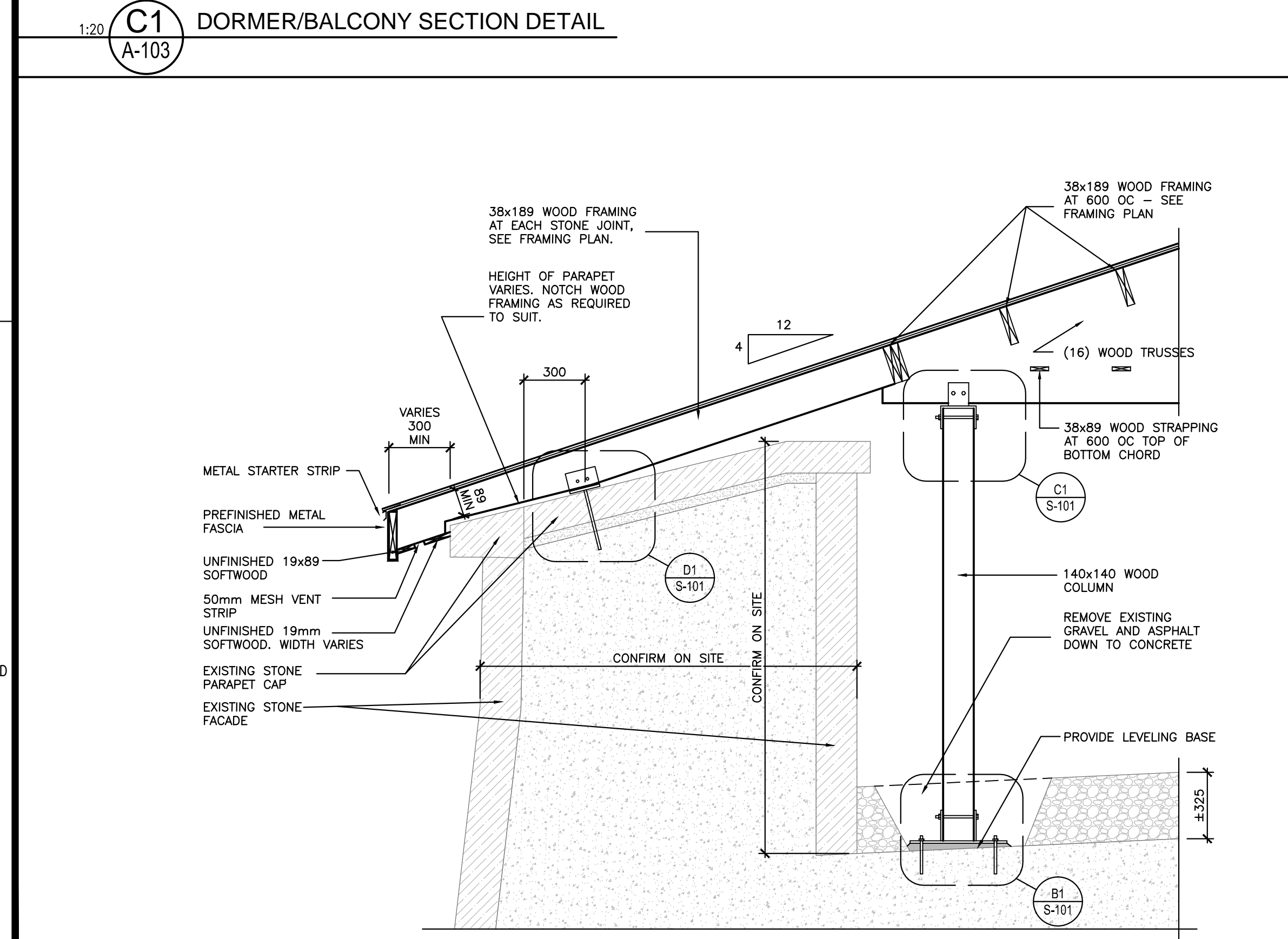
1:10 **B5** CUPOLA SECTION DETAIL
A-103



1:20 **C1** DORMER/BALCONY SECTION DETAIL
A-103



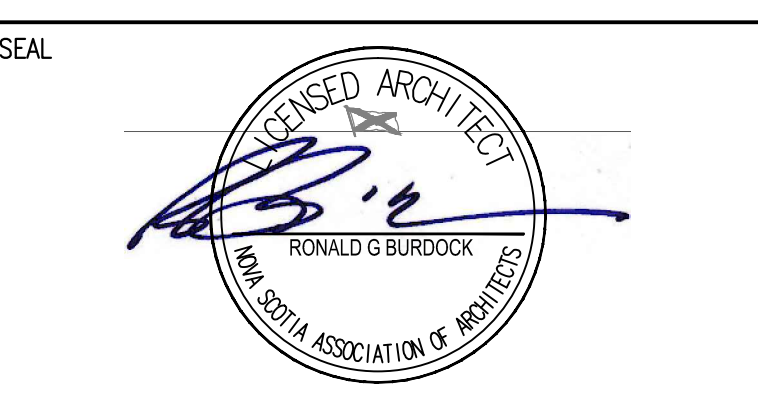
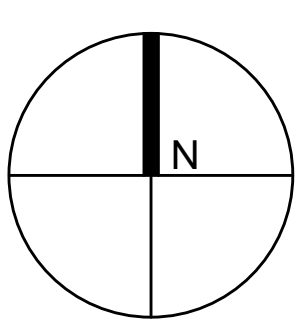
1:50 **D2** BUILDING CROSS SECTION
A-103



1:20 **D1** TYPICAL PARAPET SECTION DETAIL
A-103

DESCRIPTION	NO.	DATE
ISSUED FOR TENDER		NOV 27, 2015
ISSUED FOR FINAL REVIEW		NOV 17, 2015
75% SUBMISSION		OCT 31, 2015

REVISIONS	COPYRIGHT
DISCLAIMER	



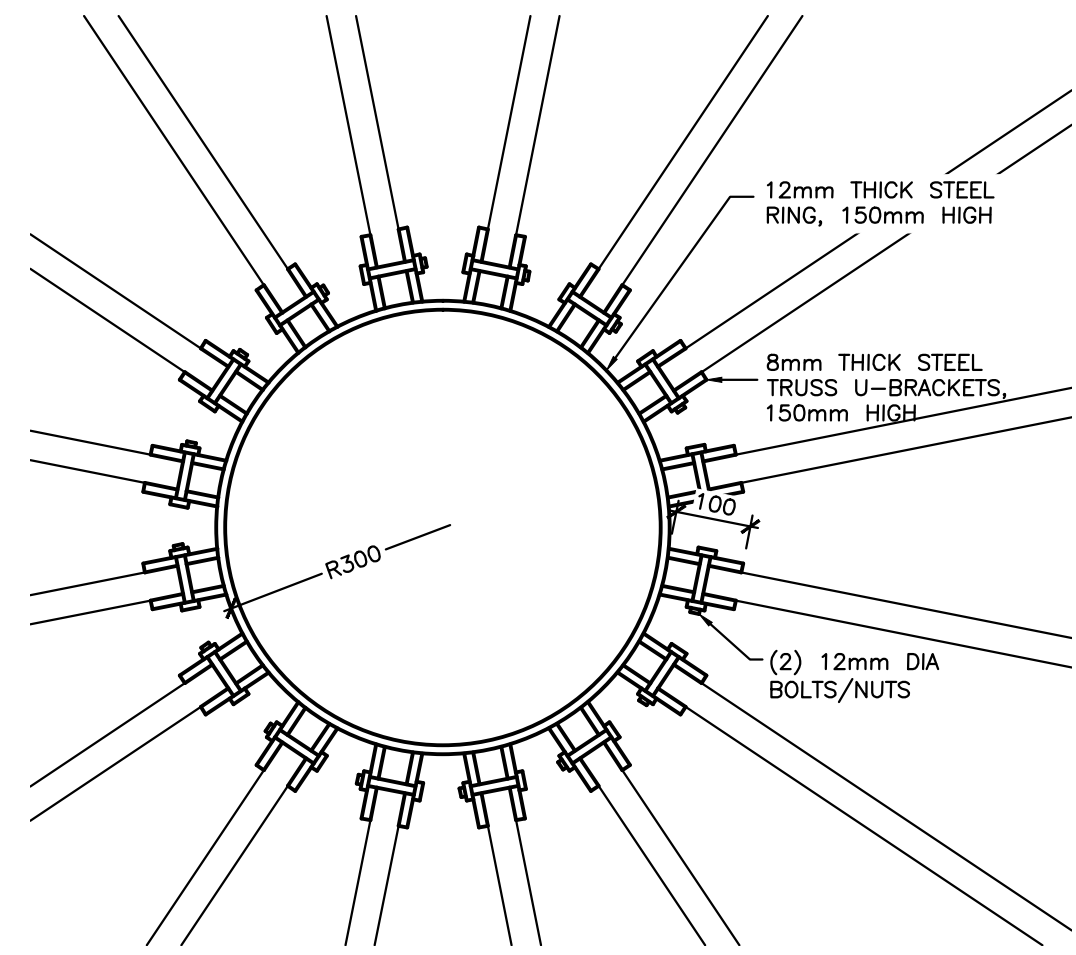
DRAWN	SCALE
JimW	AS NOTED
CHECKED	DATE
	NOVEMBER 2015
APPROVED	

CLIENT
Parks Canada

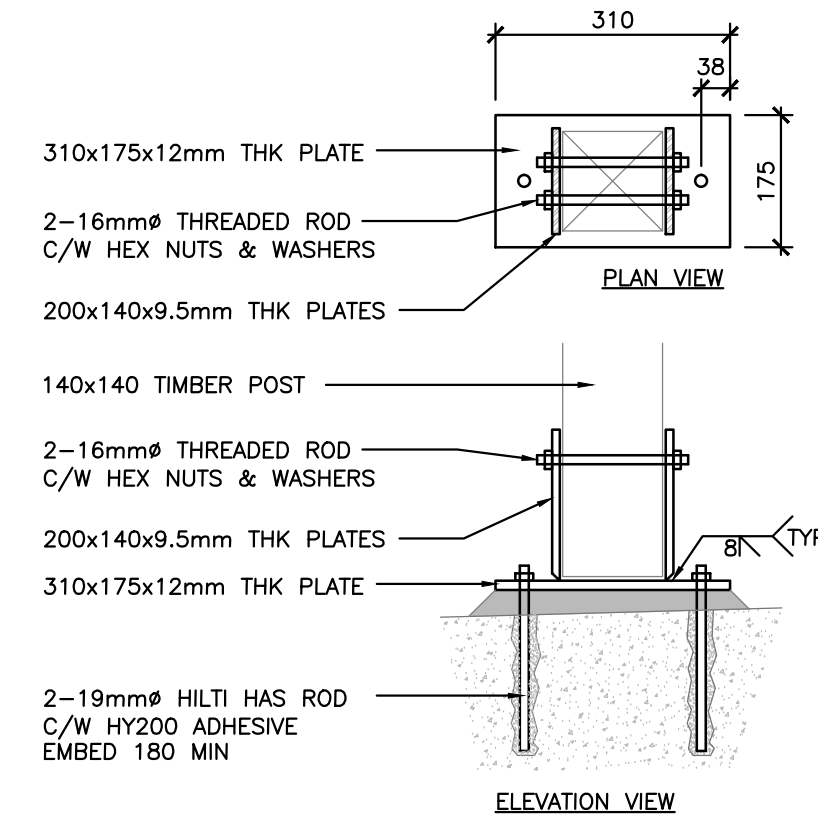
PROJECT
**Prince of Wales Tower
Point Pleasant Park**

HALIFAX NOVA SCOTIA
TITLE
SECTIONS AND DETAILS

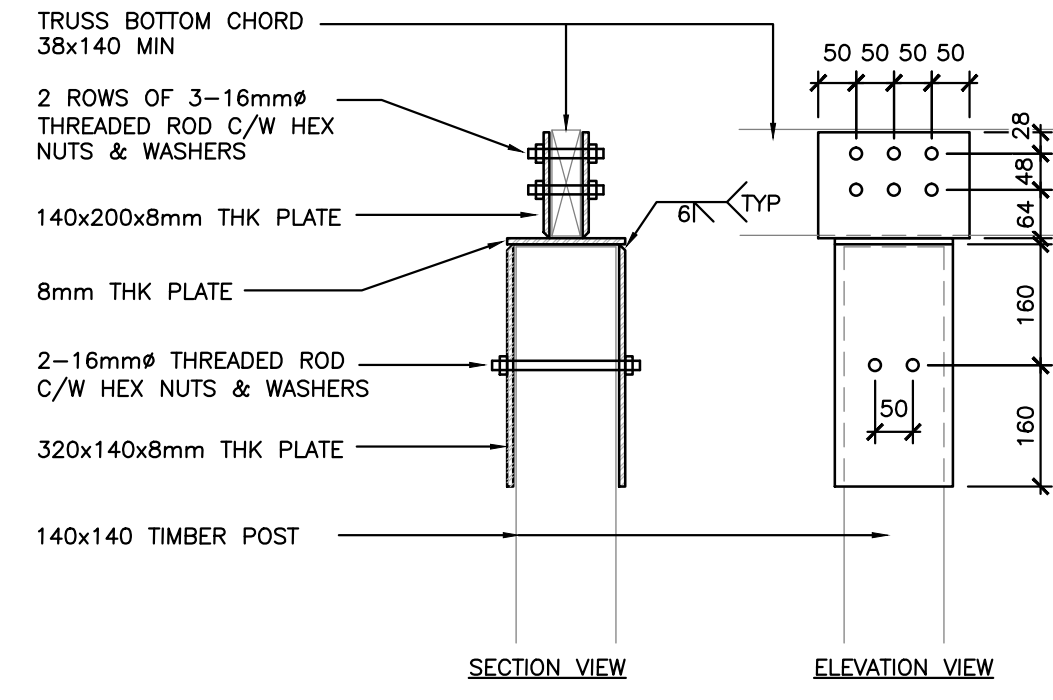
PROJECT NO.	151-09746-00
DWG. NO.	A-103
ISSUE NO.	



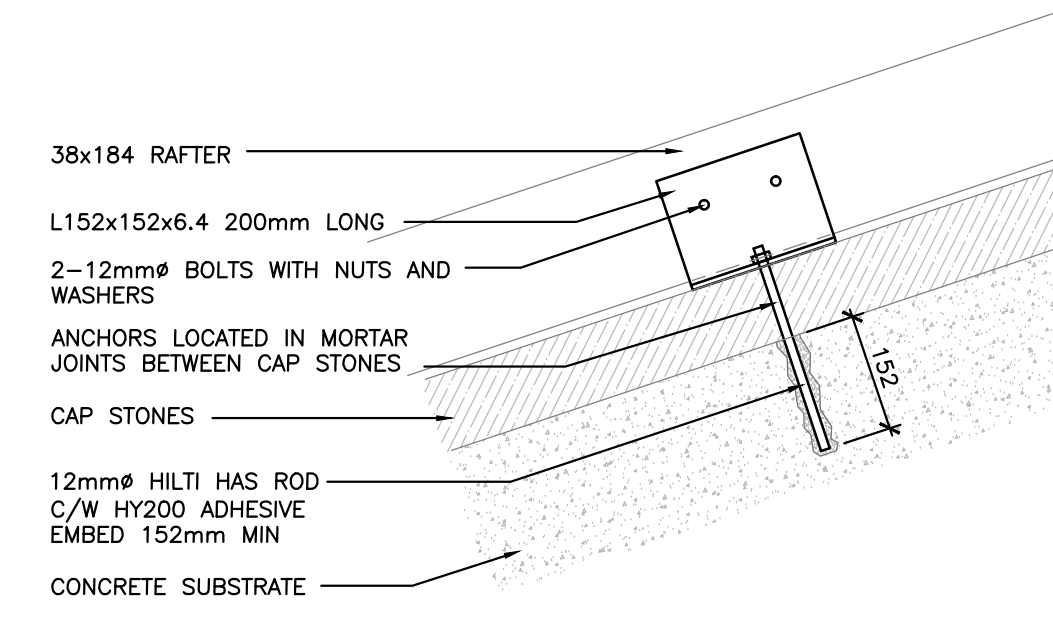
1:10 **A1** METAL TRUSS BRACKET DETAIL
S-101



1:10 **A2** POST BASE DETAIL
S-101



1:10 **A3** POST-TRUSS CONNECTION
S-101



1:10 **A4** RAFTER CONNECTION
S-101

NOTES:

ROOF DESIGN LOADS:
DEAD LOAD = 0.8 kPa
SNOW LOAD = SEE SNOW LOAD DIAGRAM ON DRAWING A-103
WIND LOAD = 0.9 kPa (DOWNWARD)
NET FACTORED WIND UPLIFT (TRUSS DESIGN) = 1.6 kPa
NET FACTORED WIND UPLIFT (SHEATHING)
- MIDDLE ZONE = 2.35 kPa
- EDGE ZONE = 3.68 kPa

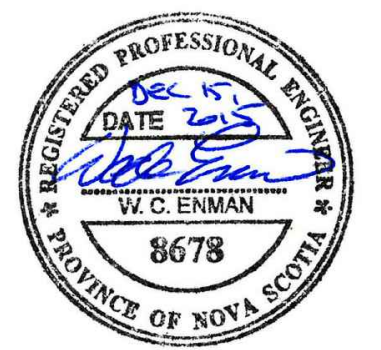
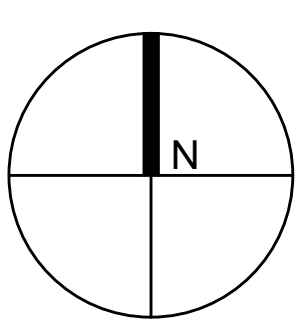
DEFLECTION CRITERIA:
TOTAL LOAD = L/240
SNOW LOAD = L/300

THESE ARE DESIGN ASSUMPTIONS AND NEED TO BE VERIFIED BY THE ENGINEER THAT STAMPS THE TRUSS DRAWINGS. THE TRUSS ENGINEER WILL NEED TO CONFIRM THESE ASSUMPTIONS ARE APPROPRIATE FOR THIS PROJECT.

ANCHOR RODS: FOR NEW ROOF ANCHORAGE TO EXISTING PARAPET/WALL CONNECTION.
- STANDARD OF ACCEPTANCE: ANCHOR ROD HAS, 19mm x 305mm BY HILTI, OR APPROVED EQUAL.
- ALLOW FOR 455mm DEEP ANCHORS IF REQUIRED AFTER REVIEW OF SITE CONDITIONS.

TRUSS DESIGN TO BE SIGNED AND STAMPED BY A PROFESSIONAL ENGINEER. REFER TO SPECIFICATION SECTION 06 17 53

ISSUED FOR TENDER	NOV 27, 2015
DESCRIPTION	NO. DATE
REVISIONS	
DISCLAIMER	COPYRIGHT



DRAWN	SCALE
Jim W	AS NOTED
CHECKED	DATE
	NOVEMBER 2015
APPROVED	

CLIENT
Parks Canada

PROJECT
Prince of Wales Tower
Point Pleasant Park

HALIFAX NOVA SCOTIA
TITLE
STRUCTURAL DETAILS

PROJECT NO. 151-09746-00

DWG. NO. ISSUE NO.

S-101